

Teletype Corporation  
Chicago, Illinois, U.S.A.

RTTY ELECTRONICS  
TELETYPE=Sales-Service-Parts  
PO Box 20101 El Sobrante, Ca.  
94820 (510)222-3102  
mr\_rtty@pacbell.net

Specification S-5509  
Issue 2, Page 1  
February, 1946

INSTRUCTIONS FOR INSTALLING AND ADJUSTING  
THE 112594 SET OF PARTS TO PROVIDE EXPERIMENTAL  
OPERATION OF MODEL 14 TYPING REPERFORATOR KEYBOARDS  
AT 100 WORDS PER MINUTE (7.42 UNIT TRANSMISSION)

Caution: This set of parts is intended to provide 100 words per minute operation on an experimental basis only. Development work has not progressed to the point at which operation at 100 words per minute is as dependable and accurate as operation at lower speeds.

The 112594 set of parts consists of:

2	74986	Screw
*1	91120	Trip-Off Pawl Spring
1	111731	Cam Sleeve Assembly
2	112498	Screw
1	112587	Lock Loop Backstop Assembly
1	112588	Contact Mounting Assembly
1	112589	Contact Cover

For part numbers referred to in this specification but not included in the foregoing list refer to the Model 14 Typing Reperforator Parts Bulletin.

The keyboards selected for this service must have the following standard feature which is essential for 100 words per minute operation:

IMPROVED LUBRICATION OF FRONT SHAFT BEARING

This feature requires the following part:

1	90438	Felt Button
---	-------	-------------

INSTALLATION

- \*(1) Remove and discard the 89080 guard (if present), the transmitting contact mounting assembly, its mounting screws and lock washers and the 35-133 trip-off pawl spring.
- (2) Remove and discard the present cam sleeve assembly and install the 111731 cam sleeve assembly by removing the rear bearing bracket.
- (3) Install the 112588 contact mounting assembly, using the two 112498 screws furnished.
- (4) Install the 112587 lock loop backstop assembly on the 7382 front bracket using the longer 74986 screws for mounting, instead of the 6746 screws. (See Figure 1.)
- \*(5) Install the 91120 trip-off pawl spring.

\* Indicates Change

Printed in U.S.A.

### SPECIAL ADJUSTMENTS AND SPRING TENSION REQUIREMENTS

Standard adjustments for the Model 14 Keyboard apply except for the following changes:

#### TRANSMITTING CONTACT GAP ADJUSTMENT

- (1) With the contact levers on the high part of their cams, the contact gap should be \*.020" to .025".

\*For start-stop contacts, the gap should be .015" to .025".

- (2) It should require a pressure of 4 to 8 ozs. to start the short contact spring moving away from its stiffener when the push end of an 8 oz. scale is applied to the contact spring at the contact and pushed at right angles to the contact spring.

To adjust bend the short contact spring and stiffener to obtain the requirement specified in paragraphs 1 and 2.

#### LOCK LOOP BACKSTOP ADJUSTMENT

With the lock loop held against the backstop screw there should be .020" to .060" clearance between the lock loop roller and the lock loop cam when the transmitting cam sleeve is rotated to make this clearance a minimum. Adjust by positioning the backstop screw. (See Figure 1.)

#### \* TRIP-OFF PAWL SPRING TENSION

This requirement should be - from 4-1/2 to 5-1/2 ozs. instead of 2-3/4 to 3-3/4 ozs.

#### LUBRICATION

Saturate the felt rings of the 111731 cam sleeve assembly with oil.

Install the 112589 contact cover with the slotted end under the front post screw of the slip connection strip. Move the 8543 screw, 2191 lock washer and 7002 washer from the rear projection of the contact mounting plate to the lower front hole of the contact cover. Tighten both mounting screws. (The rear projection is not used with this set of parts.)

Caution: Make certain that the contact cover does not interfere with the movement of the start-stop contact spring.

See Figures 2, 3 and 4 for part numbers.

\* Indicates Change

\*

\*

\*

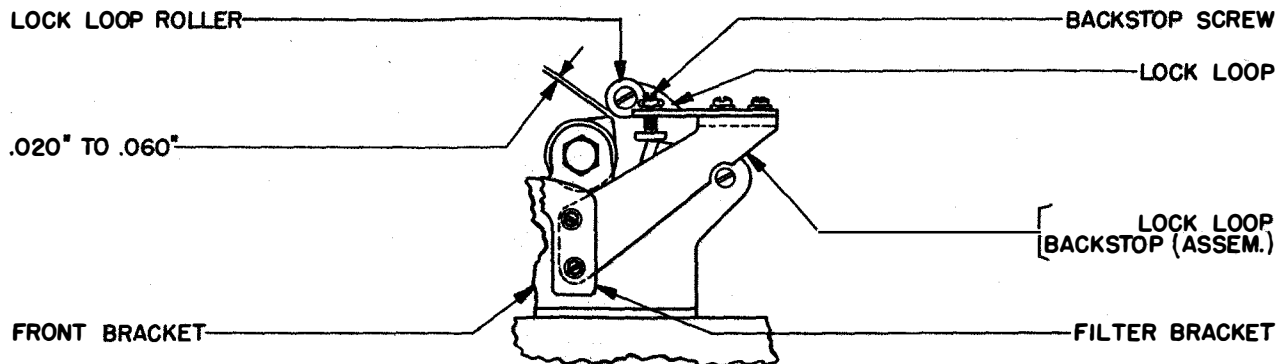


FIGURE 1

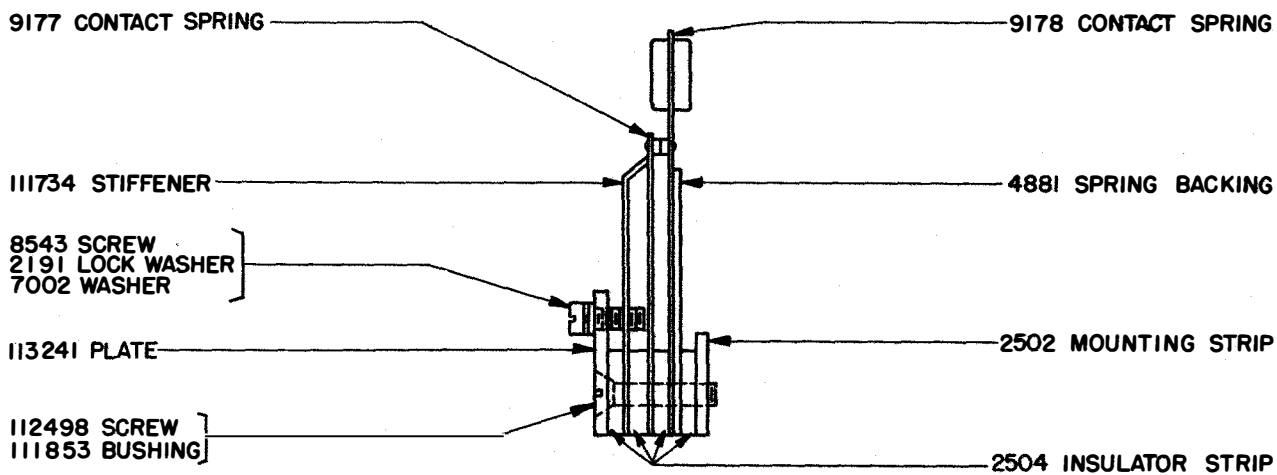


FIGURE 2

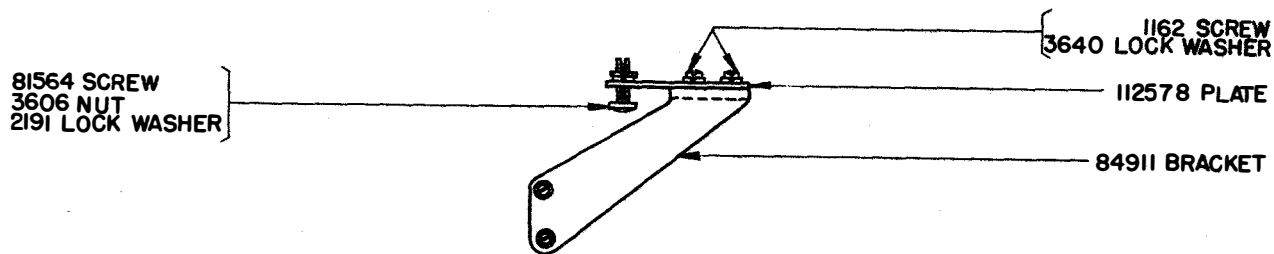
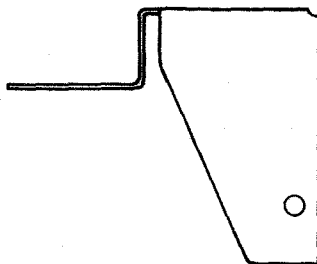


FIGURE 3



112589 CONTACT COVER

FIGURE 4