

INSTRUCTIONS FOR INSTALLING 406190 MODIFICATION
KIT INTO A 40CAB351/YZ OR 40CAB353/YZ COMMON CORE
CABINET TO FORM THE FOLLOWING ARRANGEMENTS

CABINET CODE (Table Top)	ZZ CODE	MOD KIT	DESCRIPTION	TYPE
40CAB351/AE =	40CAB351/YZ	406190	Houses synchronous integrated controller and has provision for dual EIA type printer interface	80-column tractor
40CAB353/AD =	40CAB353/YZ	406190		132-column tractor

1. GENERAL

Note: This modification kit can only be used with cabinets that have the cutout in back that accommodates two EIA connectors.

1.01 This specification provides the necessary parts to convert either an 80-column or 132-column tractor feed printer cabinet so that it supports a synchronous integrated controller.

1.02 All instructions on unit packing, cartons, and labels shown inside the cabinet should be adhered to.

1.03 Complete illustrations and parts identification for cabinets 351/YZ and 353/YZ can be found in Section 582-212-700 or Manual 355 and used as an aid for location and identification.

Note: When ordering replaceable components, unless otherwise specified, prefix each part number with the letters "TP" (ie, TP410022).

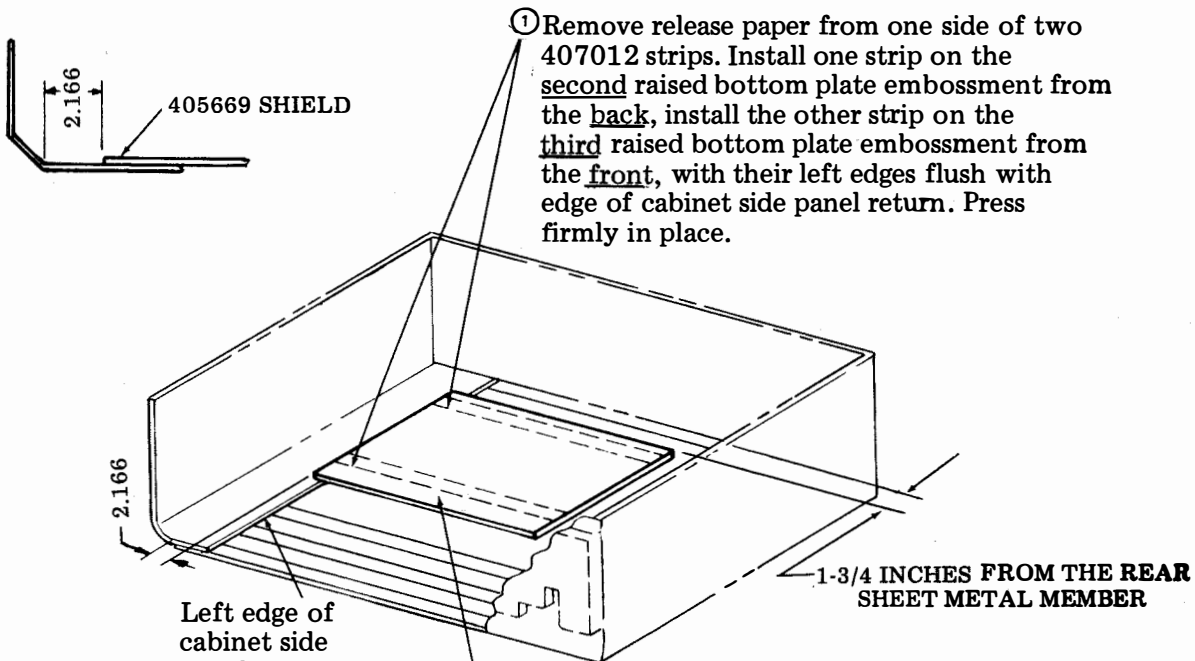
1.04 The 406190 modification kit consists of the following parts:

<u>Qty</u>	<u>Part No.</u>	<u>Description</u>
2	3640	Lockwasher
4	107116	Starwasher
2	116793	Washer
4	151631	Screw, Std Hex Head
1	154249	Screw, Tapping
2	326023	Screw, Std Hex Head
1	401227	Tab, Terminal
2	402449	Bushing
1	405669	Shield
1	406169	Connector Assy
1	406172	Cable Assy EIA
1	406173	Cable Assy Ptr
1	406189	Bracket, Assy Cap
1	406192	Cable Assy, Opcon
2	407012	Adhesives, Die Cut

RTTY ELECTRONICS
TELETYPE=Sales-Service-Parts
PO Box 20101 El Sobrante, Ca.
94820. (510)222-3102
mr_rtty@pacbell.net

2. INSTALLATION

2.01 Installation of 406190 modification kit requires the following steps:



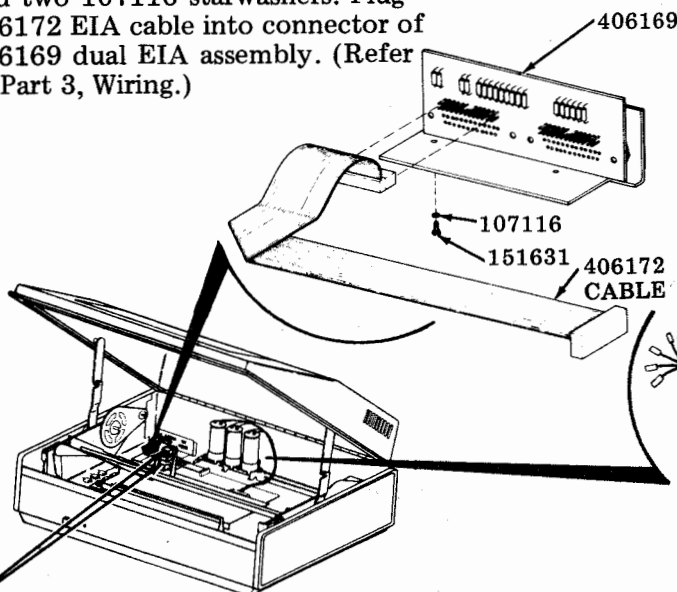
① Remove release paper from one side of two 407012 strips. Install one strip on the second raised bottom plate embossment from the back, install the other strip on the third raised bottom plate embossment from the front, with their left edges flush with edge of cabinet side panel return. Press firmly in place.

Left edge of cabinet side panel return, 40CAB353 cabinet only.

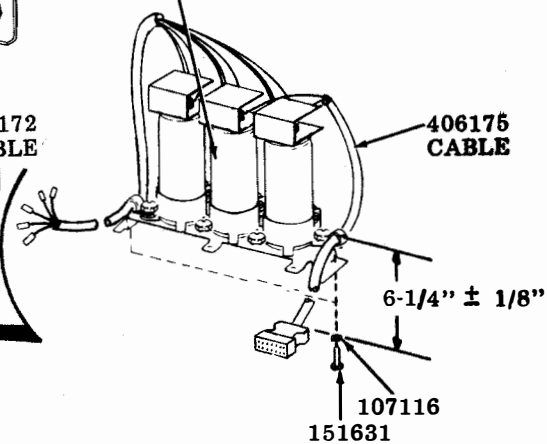
1-3/4 INCHES FROM THE REAR SHEET METAL MEMBER

② Remove release paper from top side of two 407012 adhesive strips. Locate 405669 shield as indicated by dimensions and press firmly in place.

③ Mount 406169 dual EIA assembly into the cabinet. From beneath cabinet, insert two 151631 screws and two 107116 starwashers. Plug 406172 EIA cable into connector of 406169 dual EIA assembly. (Refer to Part 3, Wiring.)




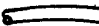
④ Mount 406189 capacitor assembly into cabinet as shown. From bottom of cabinet insert two 151631 screws and two 107116 lockwashers. (Refer to Part 3, Wiring.)

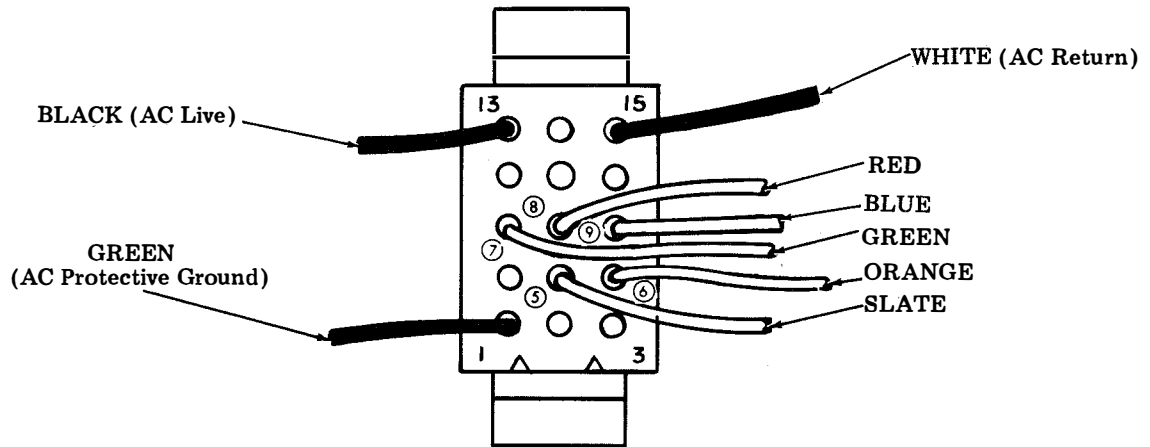


⑤ If "ac" power and "cabinet control" connectors are installed in the bracket mounted on the cradle, remove them.

⑥ Install terminals of the 406189 capacitor assembly (406175 power cable) into ac power connector (341691). (Refer to Part 3, Wiring.)

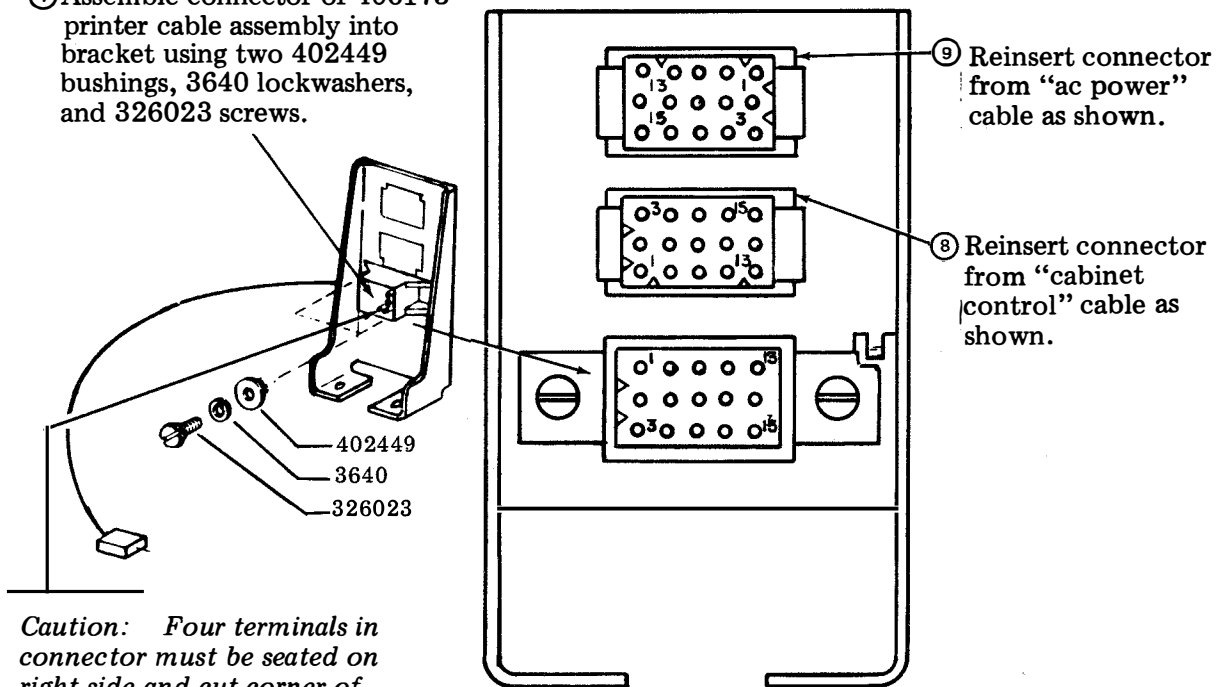
LEGEND:

- Wires shown solid  are supplied with the cabinet.
- Wires shown open  are part of modification kit and are field installed.
- Numbers shown solid are marked on connector.
- Numbers circled are not marked on connector but are included for reference.



(Rear View AC Power Connector)

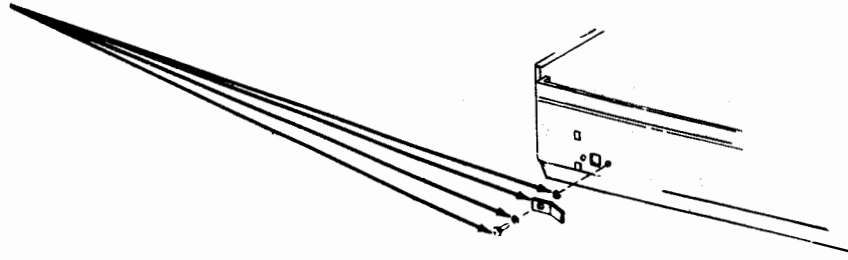
⑦ Assemble connector of 406173 printer cable assembly into bracket using two 402449 bushings, 3640 lockwashers, and 326023 screws.



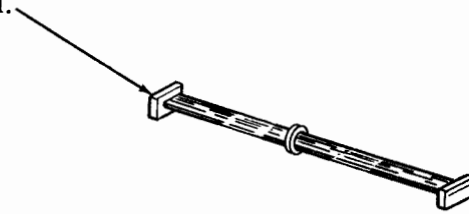
Caution: Four terminals in connector must be seated on right side and cut corner of connector faces upper right.

(Front View of Cradle Bracket)

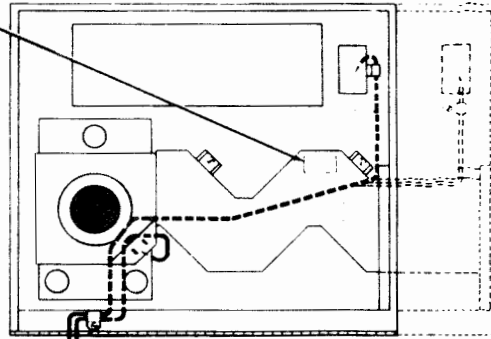
- ⑩ Assemble two 116793 lockwashers, a 401227 terminal tab and a 154249 screw, exactly as shown.



- ⑪ Place 406192 opcon cable into the cabinet. It will be installed after the controller is mounted.



- ⑫ Mark cabinet either 40CAB351/AE or 40CAB351/YZ plus 406190 modification kit (80-column) or 40CAB353/AD or 40CAB353/YZ plus 406190 modification kit (132-column).



3. WIRING

