

© 1961

American Telephone and Telegraph Company  
Printed in U. S. A.

**BELL SYSTEM PRACTICES**  
**Teletypewriter and Data Stations**

**ADDENDUM P34.604**  
**Issue 1, October, 1961**  
**AT&T Co Standard**

## **28E AND 28H-TYPE TRANSMITTER-DISTRIBUTOR UNITS LUBRICATION**

### **1. GENERAL**

1.001 This addendum supplements Section P34.604, Issue 1.

1.002 This addendum is issued to provide lubrication instructions for tabulator-control mechanism (for units so equipped) and to change the title of the section.

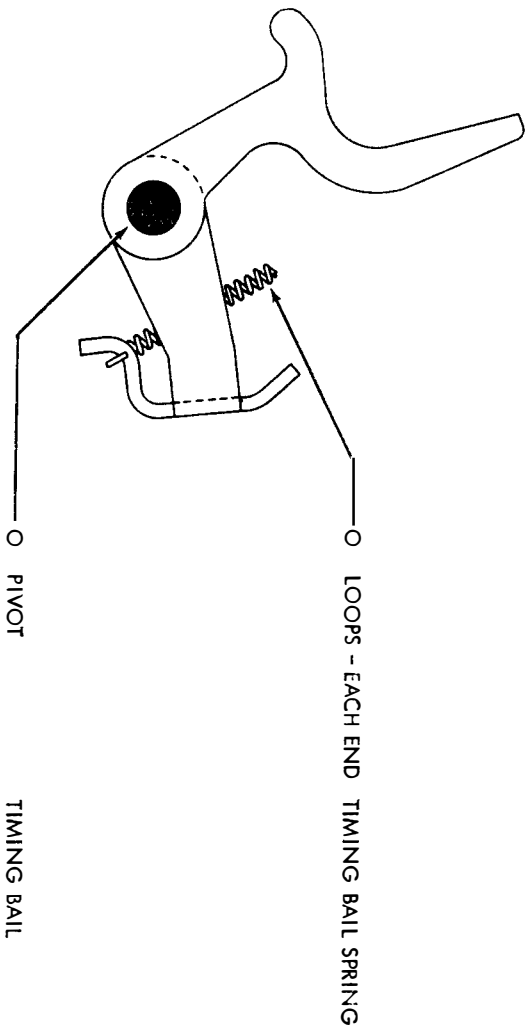
### **2. PARTS TO BE LUBRICATED**

The following change applies to Part 2 of the section.

(a) 2.17—added

**28E AND 28H-TYPE  
TRANSMITTER-DISTRIB-  
ADDENDUM UTOR UNITS  
P34.604 LUBRI-**

2.17 **Tabulator Control** (When so equipped)



BELL SYSTEM PRACTICES  
Teletypewriter and Data Stations

SECTION P34.604  
Issue 1, February, 1959  
AT&TCo Standard

## 28E AND 28H TRANSMITTER-DISTRIBUTOR UNITS LUBRICATION

| Contents                              | Par. No.  |
|---------------------------------------|-----------|
| 1. GENERAL .....                      | 1.01-1.05 |
| 2. PARTS TO BE LUBRICATED .....       | 2.01-2.16 |
| 3. REFERENCE TO BELL SYSTEM PRACTICES | 3.01      |

### 1. GENERAL

1.01 This section provides the lubrication procedures for the maintenance of the 28E and 28H transmitter-distributor units.

1.02 Lubrication of the apparatus before it is placed in service should be governed by the principles given in Section P33.014. After that, because of varying conditions at each station, the apparatus should be lubricated as often as specified by local instructions. The following lubrication intervals are suggested as a guide for use under normal operating conditions.

| <u>Operating<br/>Speeds in<br/>Words per Minute</u> | <u>Lubrication Interval</u> |
|---|-----------------------------|
| 60  | 3000 hours or 1 year*       |
| 75  | 2400 hours or 9 months*     |
| 100   | 1500 hours or 6 months*     |

\*Whichever occurs first.

1.03 The lubricants to be used and their methods of application are those specified in Section P30.011. The lubrication symbols used herein are the same as those given in that section. However, the symbol 0, which according to Section P30.011 indicates one or two drops of oil, is used in this section to mean only one drop of oil. Symbols, such as 02, 03, or 06, are used herein to specify that two, three, or six drops, respectively, are to be applied at the points indicated.

1.04 Maintenance lubrication of the 28E and 28H transmitter-distributor units after installation should be performed in accordance with the following general information and with the specific instructions illustrated in Part 2.

- (a) Saturate all felt oil retainers (felt lubricating washers and wicks) with oil.
- (b) Apply oil to all cams including the camming surfaces of each clutch disc.
- (c) Thoroughly lubricate the friction surfaces of all moving parts in accordance with the appropriate instructions given in Part 2.

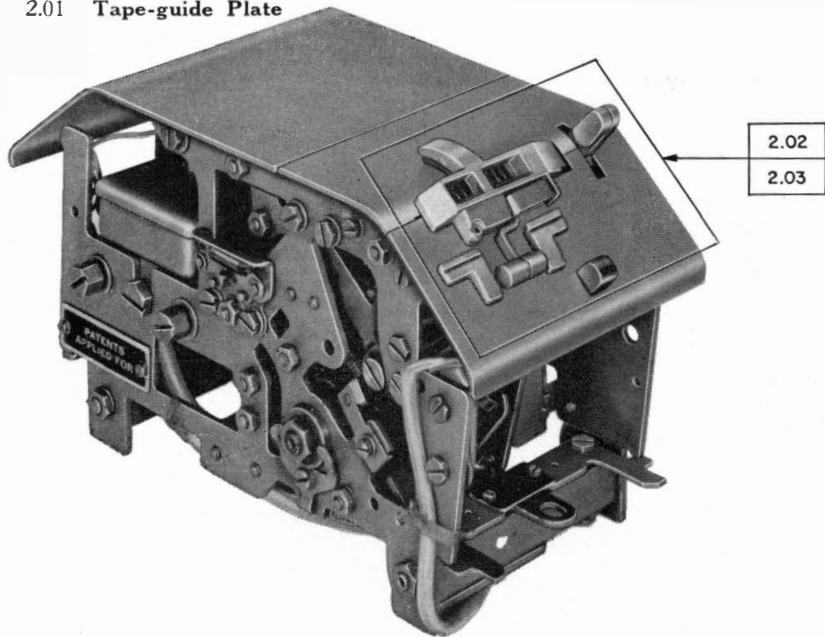
Overlubrication, however, which would permit oil or grease to drip or be thrown on other parts should be avoided. Special care should be taken to prevent any lubricant from getting on the face of any contact point or on the magnet pole face.

1.05 The photographs in this section show the paragraph numbers referring to particular line drawings of mechanisms and the location of the mechanisms on the unit. Parts in the line drawings are shown in an upright position unless otherwise indicated. If it is difficult to lubricate a part in the upright position, the apparatus should be turned to a position in which the part is more accessible.

## 2. PARTS TO BE LUBRICATED

Note: See 1.01 through 1.05 for general lubrication instructions.

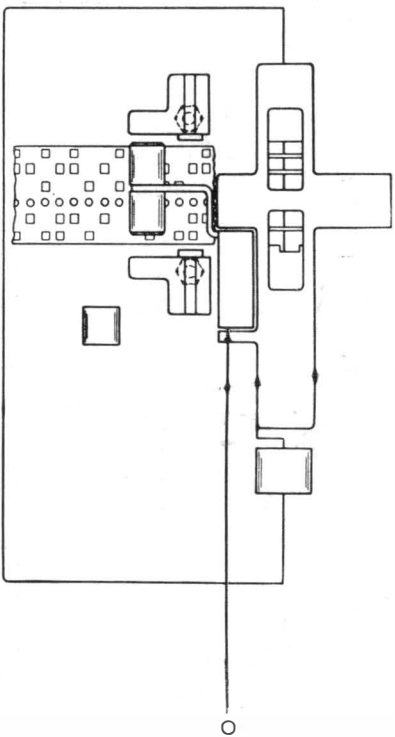
### 2.01 Tape-guide Plate



28E AND 28H  
TRANSMITTER-  
DISTRIBUTOR  
UNITS  
LUBRI-  
CATION

P34.604

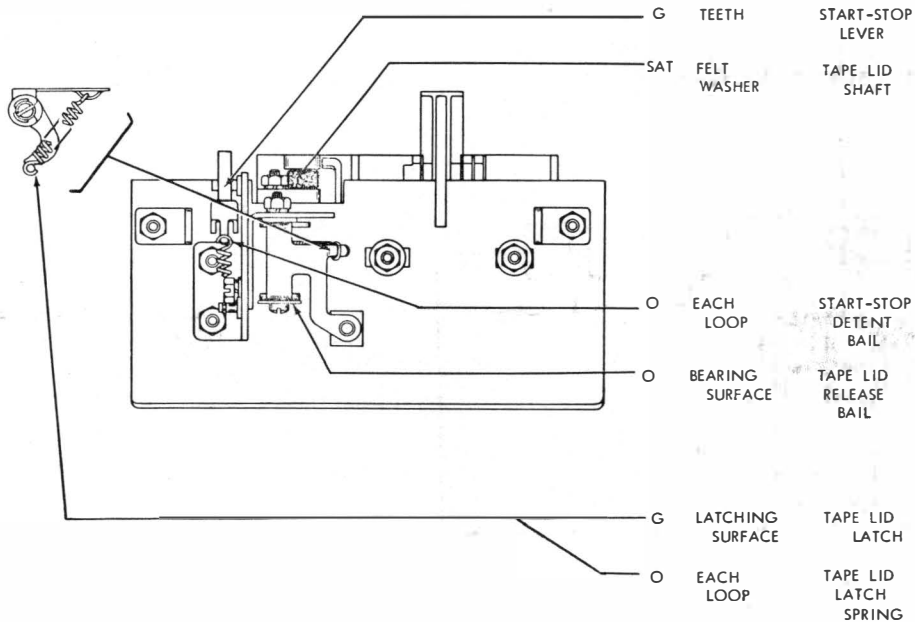
2.02 Tape-guide Plate (Cont'd)



BEARING  
SURFACE

TIGHT TAPE  
BAIL

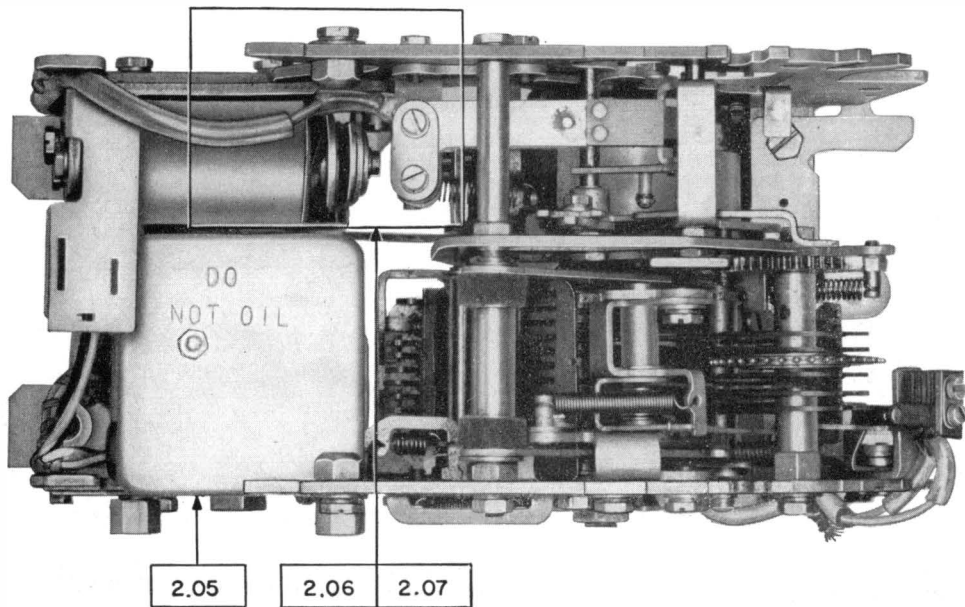
### 2.03 Tape-guide Plate (Cont'd)



28E AND 28H  
TRANSMITTER-  
DISTRIB-  
UTOR UNITS  
LUBRI-

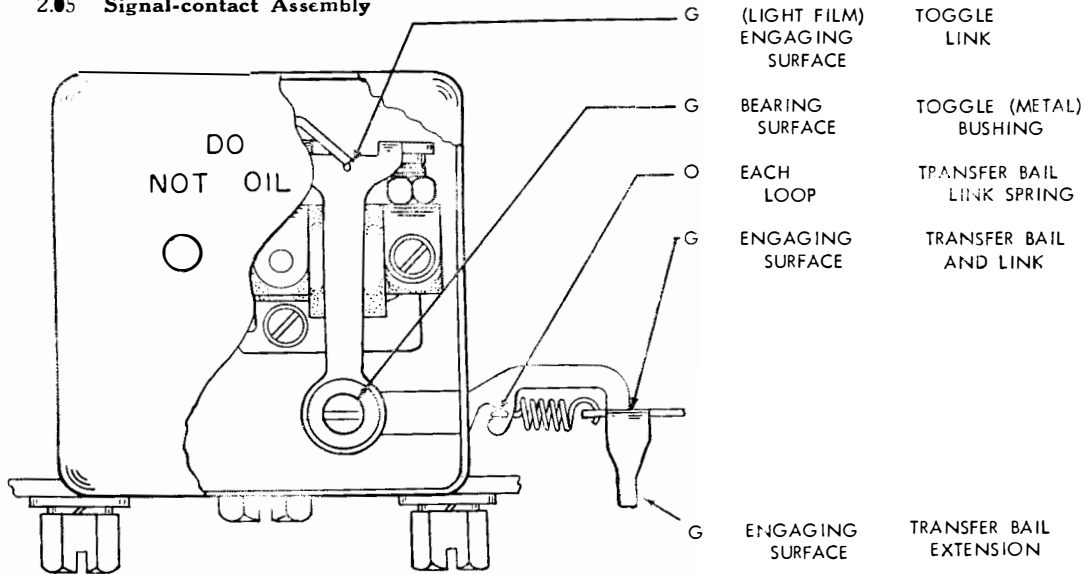
P34.604

2.04 Signal-contact and Clutch-trip Assemblies (Top View)





## 2.05 Signal-contact Assembly



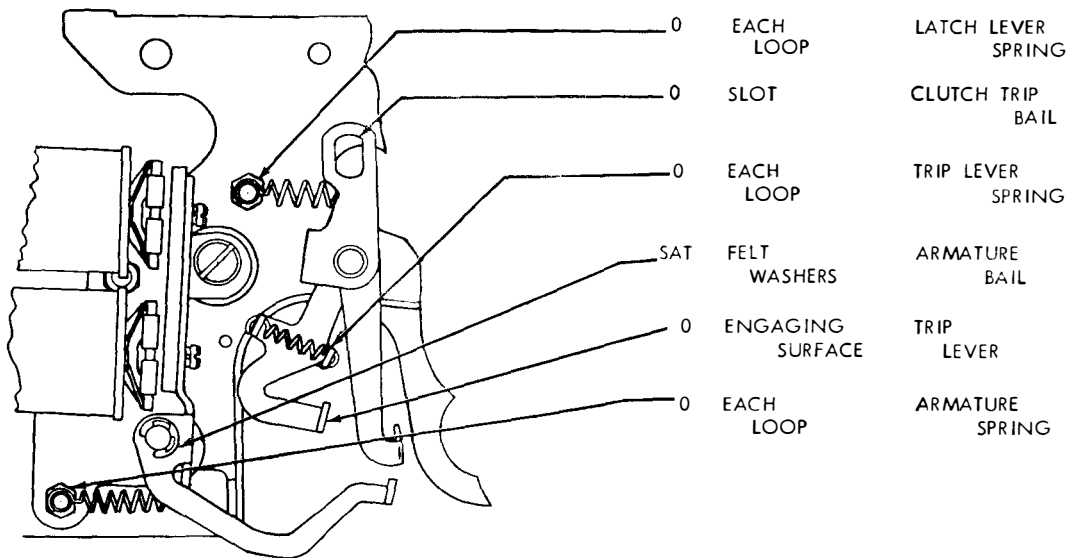
**Note:** The marking "DO NOT OIL" on the signal-contact box should be interpreted literally. Portions of the mechanism should be **greased** as indicated, but no **oil** should be used.

28E AND 28H  
TRANSMITTER-  
DISTRIBUTOR  
UNITS  
LUBRI-  
CATION

P34.604

Page 7

## 2.06 Clutch-trip Assembly



2.07 Clutch-trip Assembly (Cont'd)

SAT

FELT  
WASHER

LATCH  
LEVER

SAT

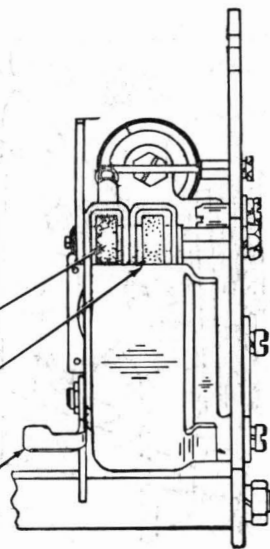
FELT  
WASHER

TRIP  
LEVER

G

ENGAGING  
SURFACE

ARMATURE  
BAIL  
EXTENSION

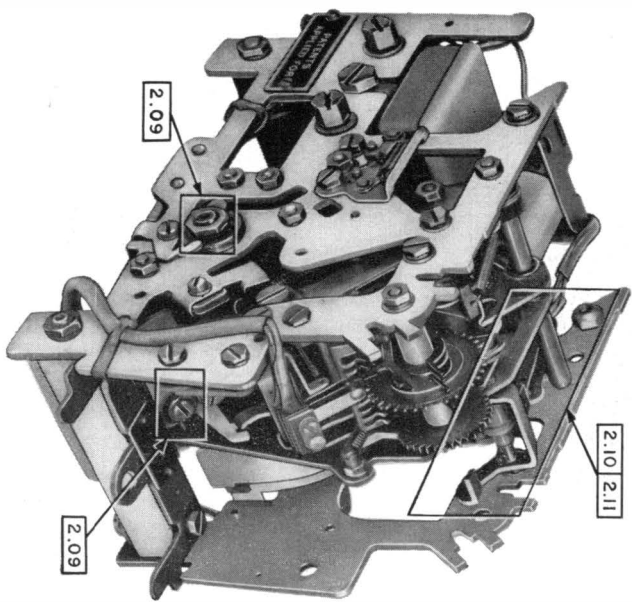


28E AND 28H  
TRANSMITTER-  
DISTRIBUTOR  
UNITS  
LUBRICATION

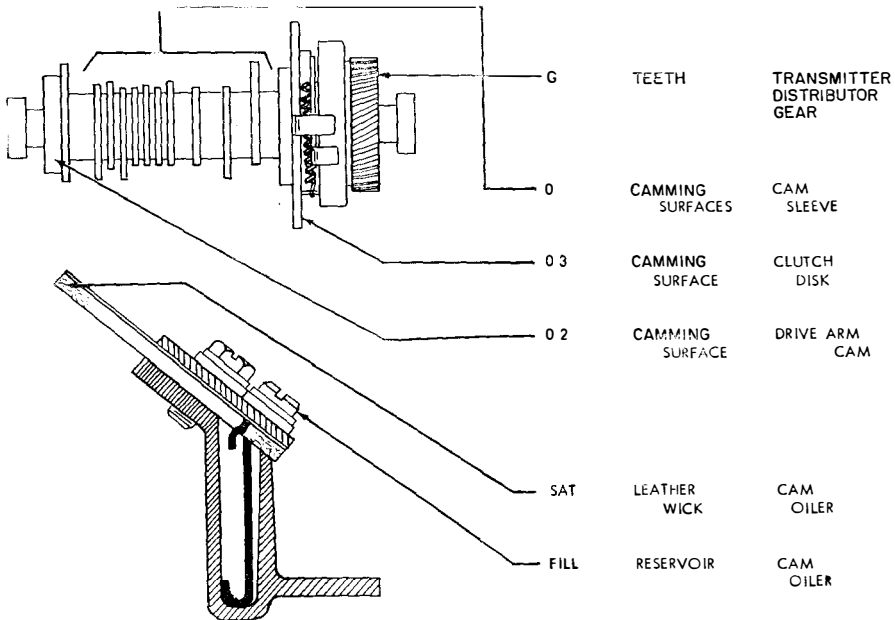
P34.604

FIG. 10

2.08 Main-shaft, Oil-reservoir, and Center-plate Assemblies



## 2.09 Main Shaft and Oil Reservoir

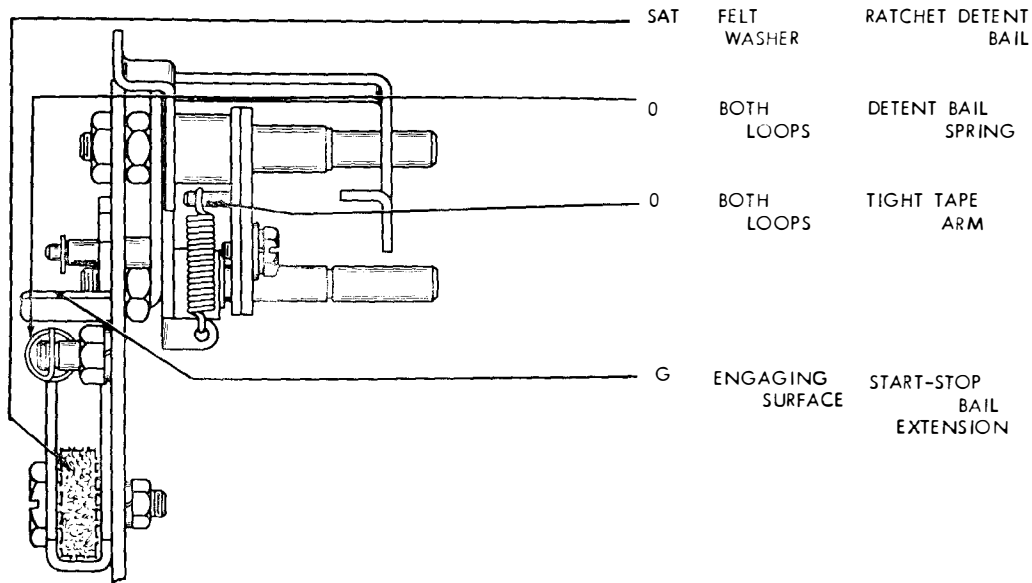


28E AND 28H  
TRANSMITTER-  
DISTRIBUTOR UNITS  
LUBRI-  
CATION

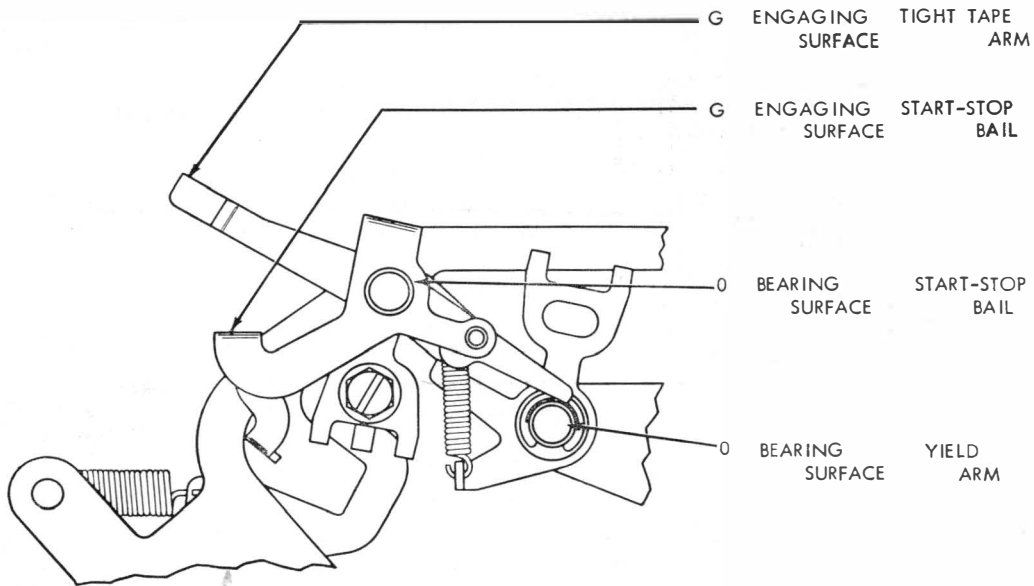
**P34.604**

Page 11

## 2.10 Center-plate Assembly



## 2.11 Center-plate Assembly (Cont'd)



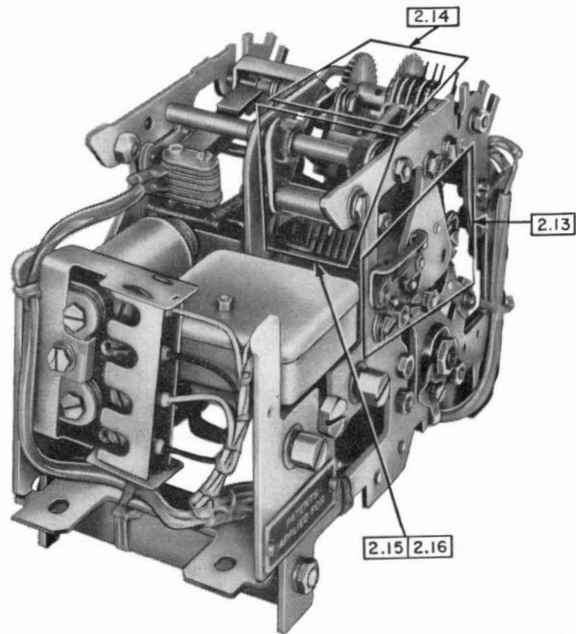
28E AND 28H  
TRANSMITTER-  
DISTRIBUTOR  
UNIT LUBRI-  
CATION

P34.604

12

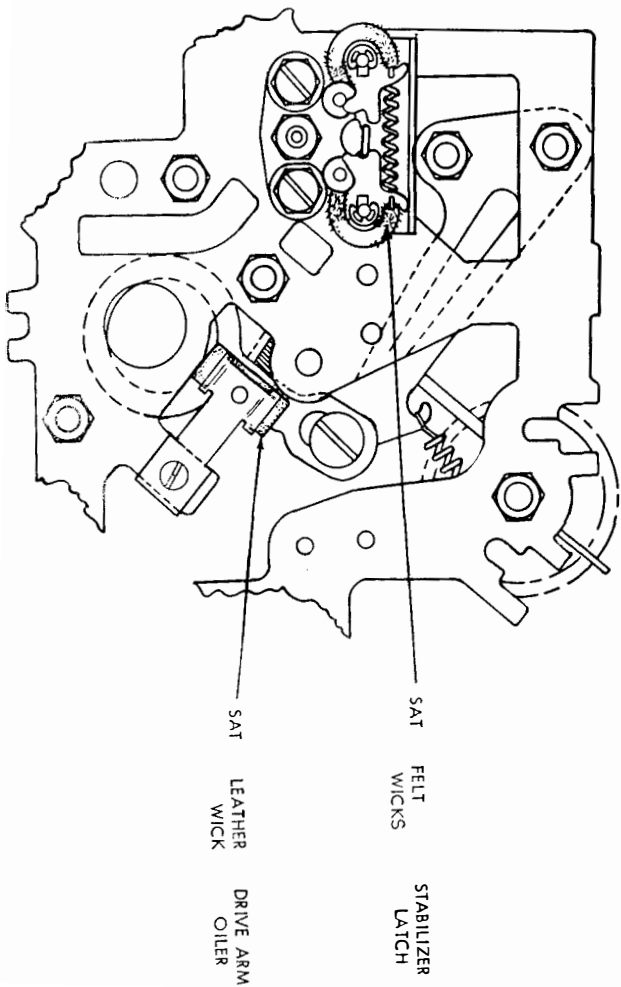
## FRONT PLATE ASSEMBLY

### 2.12 Stabilizer, Sensing and Feed Mechanism, and Transfer Mechanism





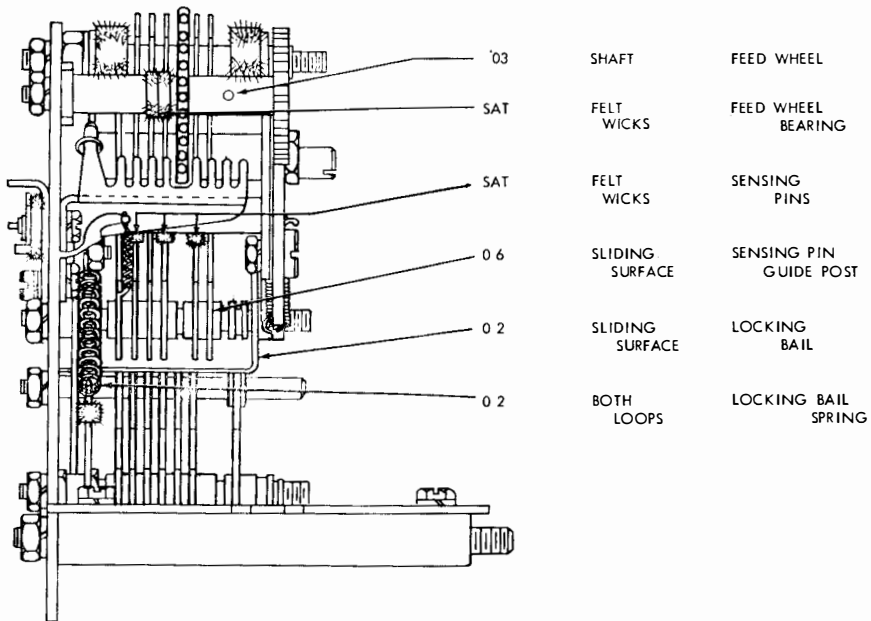
2.13 Stabilizer



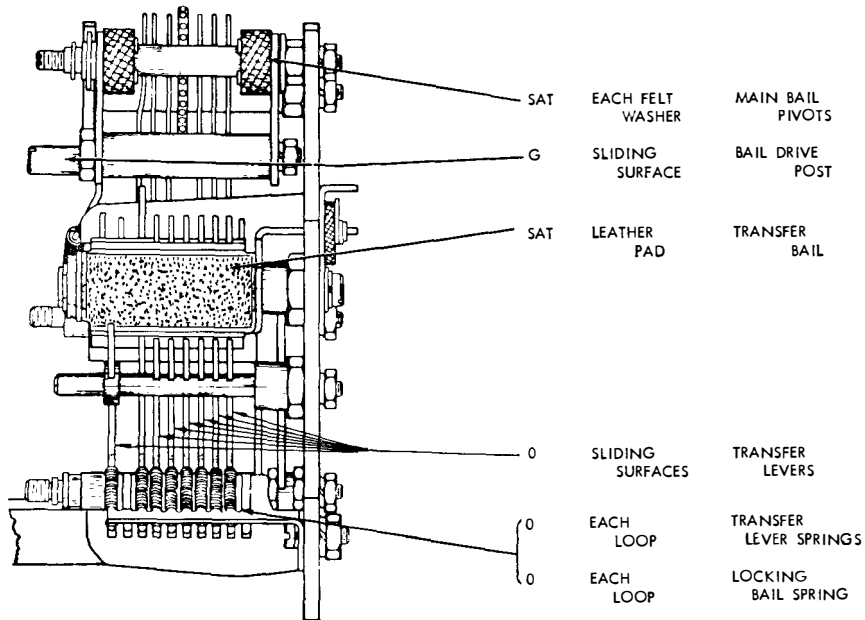
28E AND 28H  
 TRANSMITTER-  
 DISTRIB-  
 UTOR UNITS  
 LUBRI-  
 CATION

P34.604

## 2.14 Sensing and Feed Mechanism



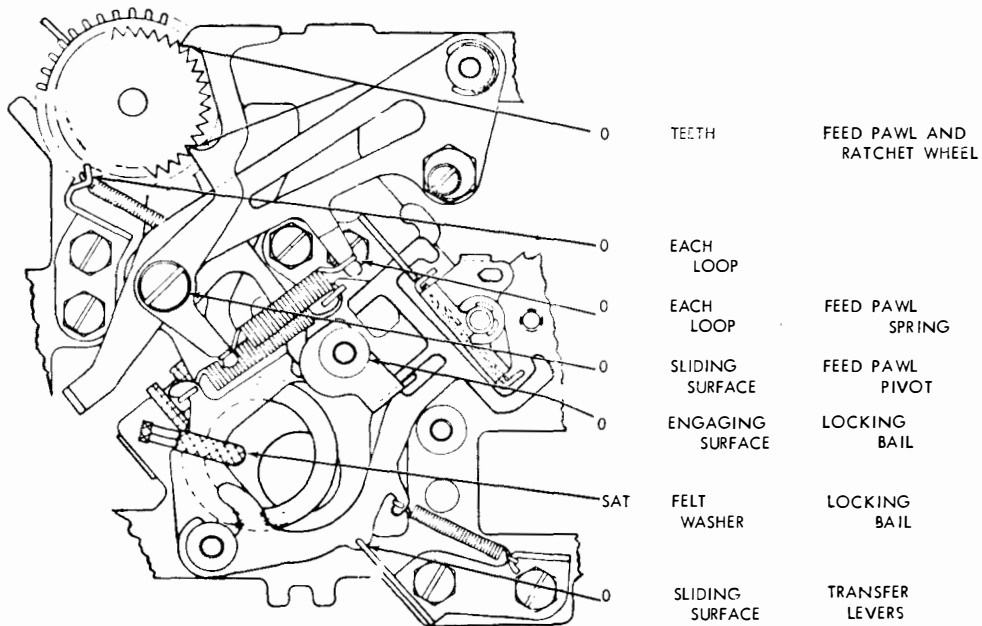
## 2.15 Transfer Mechanism



28E AND 28H  
 TRANSMITTER-  
 DISTRIB-  
 UTOR UNITS  
 LUBRI-

P34.604

## 2.16 Transfer Mechanism (Cont'd)



### 3. REFERENCE TO BELL SYSTEM PRACTICES

3.01 The following Bell System Practices provide additional information that may be required in connection with this section.

| <u>Subject</u>   | <u>Section</u> |
|--|----------------|
| Teletypewriter Apparatus, General Requirements and Procedures                        | P30.012        |
| Teletypewriter Apparatus, Lubrication, General Requirements                          | P30.011        |
| Teletypewriter Apparatus, Preparation of Apparatus for Installation                  | P33.014        |
| 28E and 28H Transmitter-Distributor Units, Requirements, Procedures, and Disassembly | P34.633        |

