

BELL SYSTEM PRACTICES
Teletypewriter and Data Stations

SECTION P34.325
Issue 2, December, 1962
AT&T Co Standard

28L, 28P AND 28P-1
ELECTRICAL SERVICE UNITS
WIRING DIAGRAM

1. GENERAL

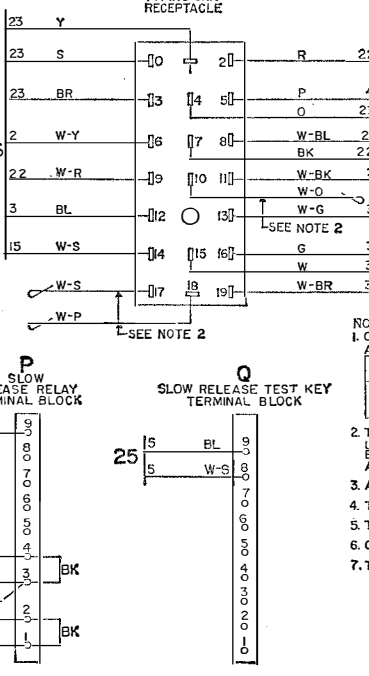
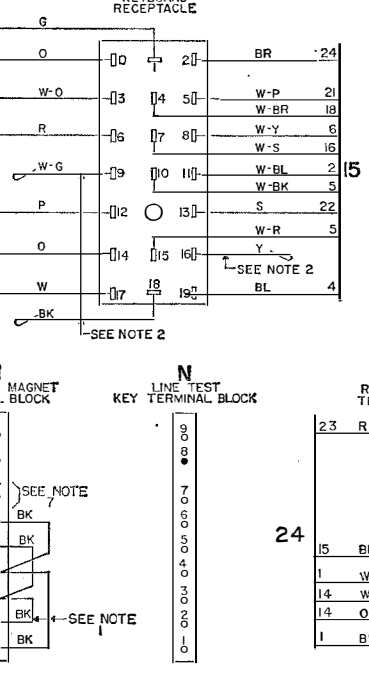
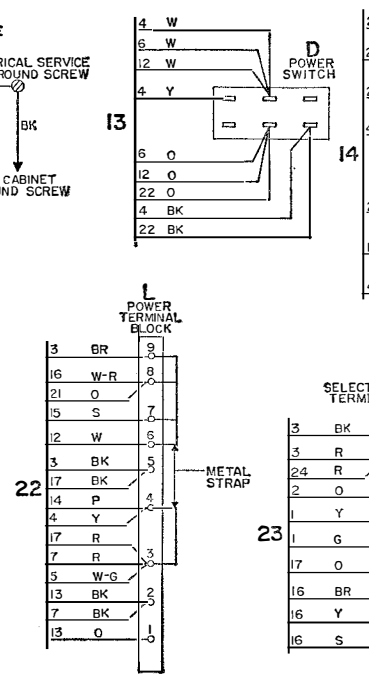
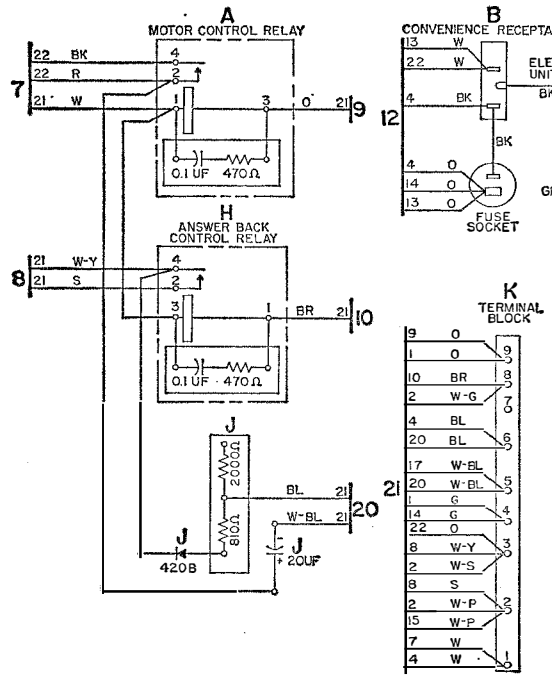
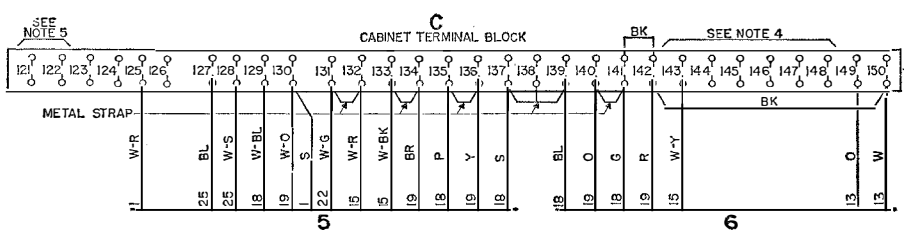
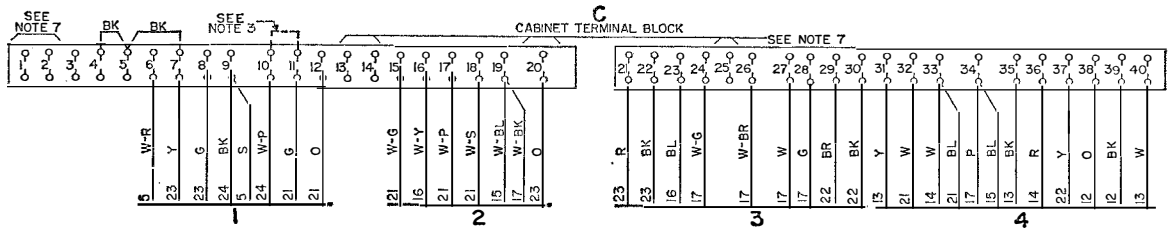
1.01 This section shows the wiring of the 28L, P and P-1 electrical service units for use with the 28 automatic send-receive set. The 28L electrical service unit is used with the 28H teletypewriter cabinet. The 28P and 28P-1 electrical service units are for use with the 28G cabinet in dial TWX.

1.02 This section is reissued to add the wiring for the 28P and 28P-1 electrical service units.

28L, 28P AND 28P-1
ELECTRICAL
SERVICE
UNITS
WIRING
DIAGRAM

P34.325

Page 1



NOTES:
 1. CIRCUITS SHOWN FOR .020 AMP NEUTRAL SIGNAL LINE OPERATION, FOR .020 AMP OPERATION REMOVE AND ADD CONNECTIONS AS FOLLOWS:

SIGNAL LINE CURRENT	CONNECTION REMOVED	CONNECTION ADDED
.020 AMP	M1-M4, M2-M3	M1-M2 (PLACE TWO STRAPS IN PARALLEL)

2. THE SPARE LEADS FROM THE KEYBOARD AND TRANSMITTER DISTRIBUTOR UNITS CONNECTOR PLUGS ARE TERMINATED IN THE RIGHT END OF THE ELECTRICAL SERVICE UNIT. THE SPARE LEADS FROM THE TYPING UNIT RECP ARE TERMINATED IN THE LEFT END OF THE ELECTRICAL SERVICE UNIT.
 3. ADD STRAP BETWEEN C10 & C11 IF SIGNAL LINE BREAK SWITCH IS NOT USED.
 4. TERMINALS C143-C148 RESERVED FOR CABINET LAMP OPERATION.
 5. TERMINALS C121 C122 RESERVED FOR PERFORATOR LOW TAPE SWITCH
 6. CONTACTS SHOWN IN UNOPERATED OR DEENERGIZED POSITION.
 7. TERMINALS C1, C2, C13, C14, C20, C25, M7 RESERVED FOR 101A DATA SET USE.

28P Electrical Service Unit

