

**BELL SYSTEM PRACTICES**  
Teletypewriter and Data Stations

**SECTION P34.305**  
Issue 3, January, 1962  
AT&TCo Standard

## **28-TYPE REPERFORATOR- TRANSMITTER SETS AND UNITS**

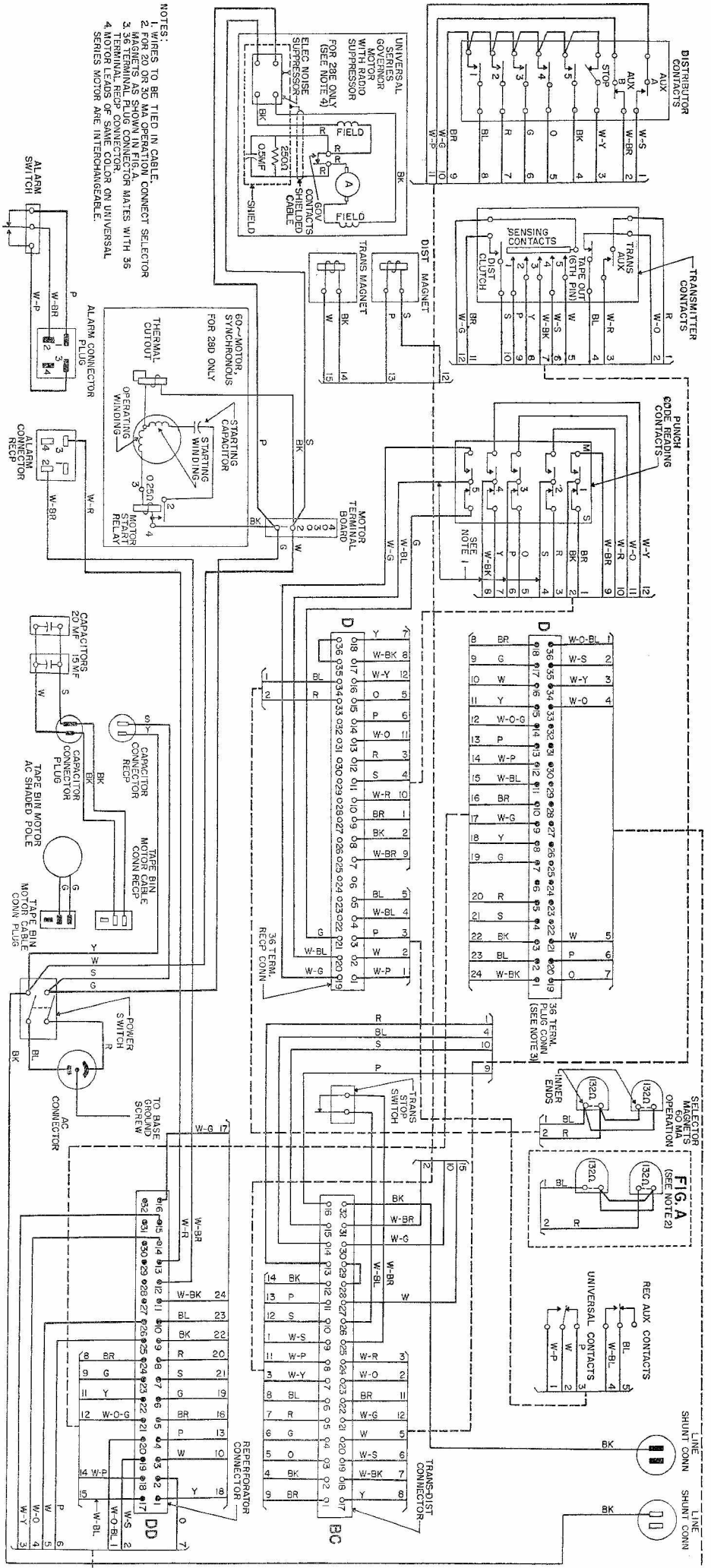
### **WIRING DIAGRAM**

#### **1. GENERAL**

1.01 This section shows the wiring of the 28A, B, C, D and E reperforator-transmitter sets and the 28F and 28G reperforator-transmitter units. The 28F and 28G units differ from the 28-type sets in that they do not include a tape handling stand.

1.02 This section is reissued to include the wiring of the 28G reperforator-transmitter unit.





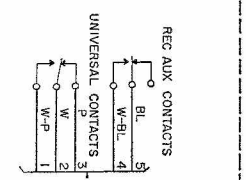
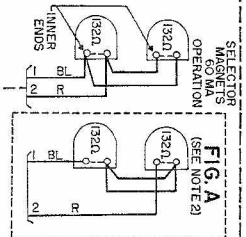
- NOTES:
- 1 WIRES TO BE TIED IN CABLE.
  - 2 MAGNETS AS SHOWN IN FIG. A.
  - 3 36 TERMINAL PLUG CONNECTOR MATES WITH 36.
  - 4 TERMINAL RECP. CONNECTOR MATES WITH 36.
  - 5 SERIES MOTOR ARE INTERCHANGEABLE.

**28D and E Repeater-Transmitter Sets**

**P34.305**  
 Page 3

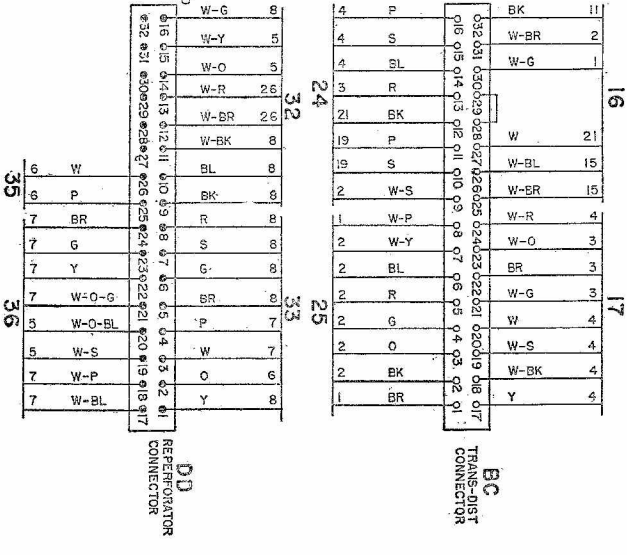
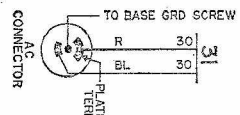
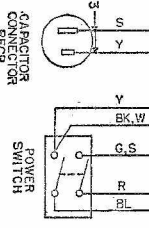
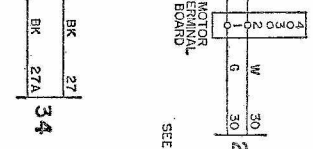
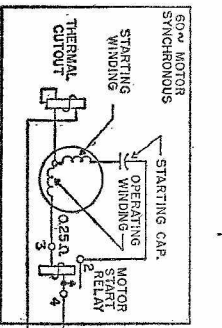
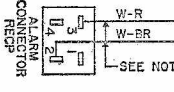
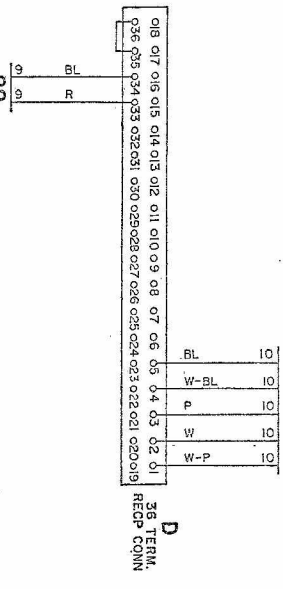
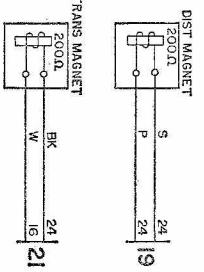
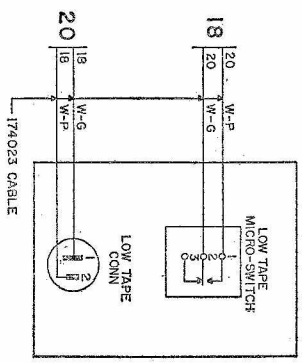
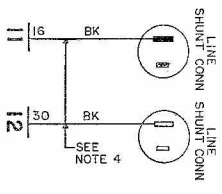
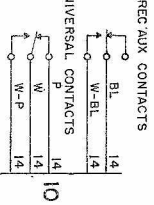
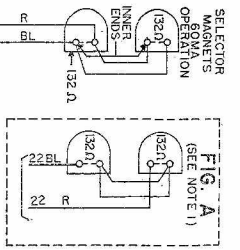
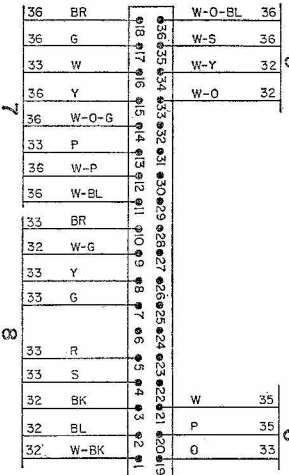
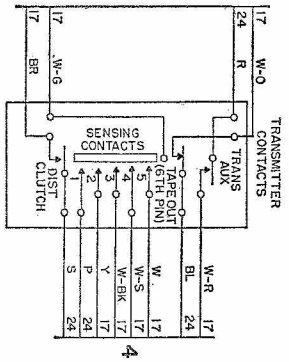
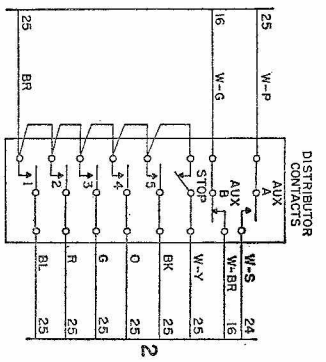
28-TYPE  
 REPERF.-  
 TRANS.  
 WIRING  
 DIAGRAM

**FIG. A**  
 SELECTOR SWITCH  
 OPERATION  
 (SEE NOTE 2)



LINE SHUNT CONN  
 LINE SHUNT CONN





- NOTES:
1. FOR 20 OR 30MA OPERATION CONNECT SELECTOR MAGNETS AS SHOWN IN FIG. A.
  2. 36 TERMINAL PLUG CONNECTOR MATES WITH 36 TERMINAL RECP CONNECTOR.
  3. RECEP/TABLE TO BE TIED OUT OF THE WAY AS IT IS NOT USED FOR THIS APPLICATION.
  4. THESE WIRES ARE NOT USED. LINE SHUNT CONNECTORS SHOULD BE PARTED AND TIED OUT OF THE WAY.