

TO LOOP JACK OF  
TLT OR IN  
SERIES WITH LINE

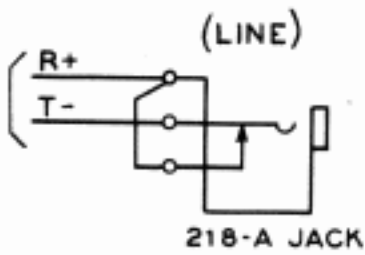


FIG. 4  
NOTE (7)

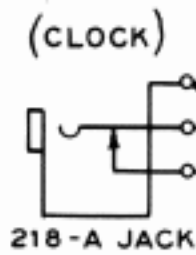
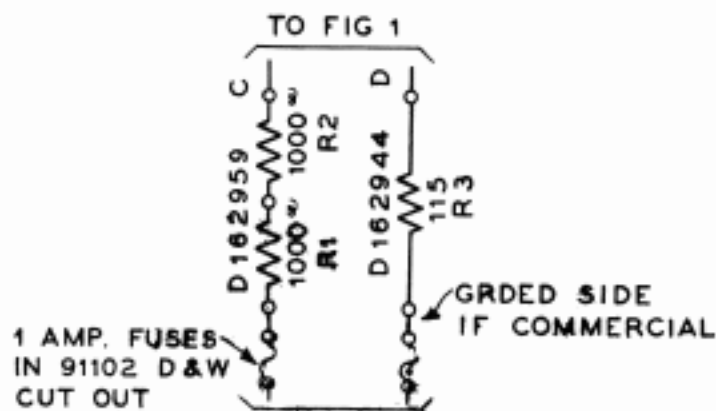


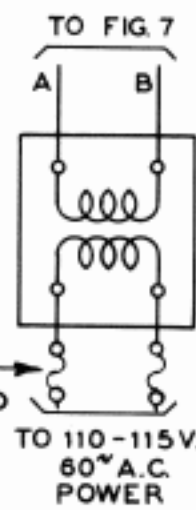
FIG. 9  
NOTE (7)



TO 110-130 V D.C.  
COMMERCIAL D.C.  
OR TO KS 5928 OR KS 5579  
RECTIFIER. ONE KS 5928  
RECTIFIER WILL SUPPLY  
36 FIGS. 1. ONE KS 5579  
WILL SUPPLY 6 FIGS. 1

FIG. 2

6.25 AMP FUSE TRONS  
STRAP OUT FUSE IN  
GROUNDED SIDE IF GROUNDED  
SERVICE



G.E.CO. .250 KVA TRANS.  
115/230/23V. FOR UP TO 36  
FIGS. 1  
G.E.CO. .500 KVA TRANS.  
115/230/23V. FOR UP TO 72  
FIGS. 1

FIG. 6

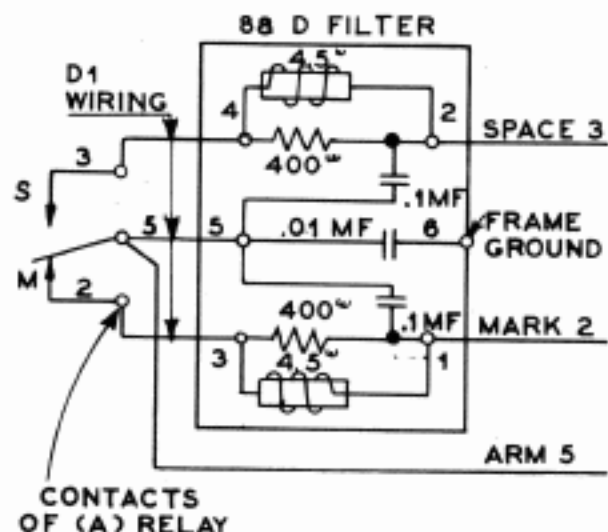


FIG. 10  
PROVIDE FOR  
(A) RELAY WHEN  
SPECIFIED  
NOTE (8)

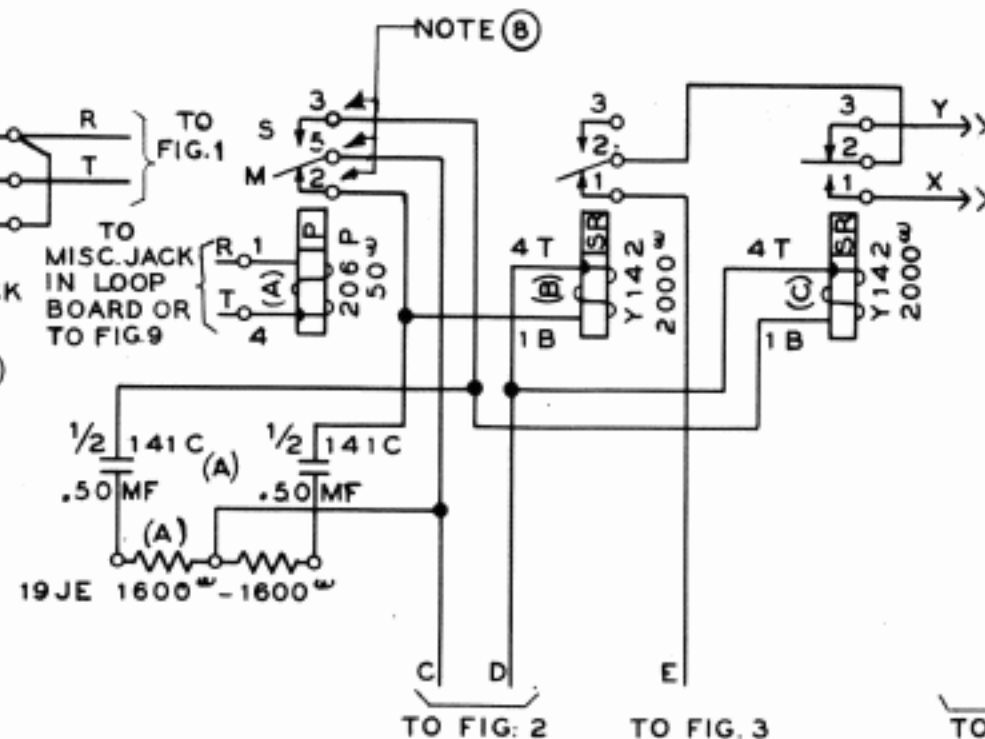


FIG. 1  
NOTE (8)

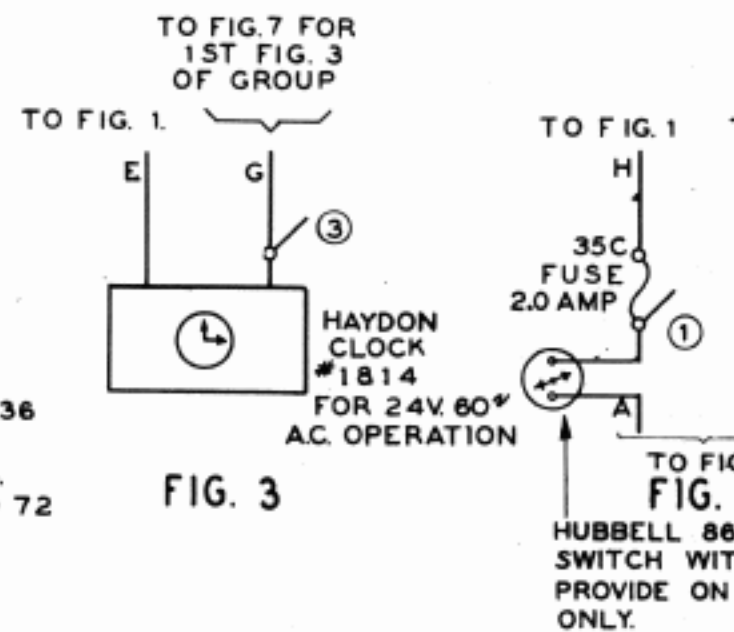


FIG. 3

DWG. NO. 21260-SD-131

APPARATUS		MECH. REQ.			BLOCK OR INSULATE	
DESIG.	CODE	B. S. P. FIG.	CONT. PRESS.	ARM TR'V'L	BLOCK OR INSULATE	CON.
A	206 P	3				4
						4
						4
						4
						11
B	Y142	175/164	H	47	A(NO)	18
						11
						11
C	Y142	175/164	H	47	A(O)	11
						11
						11

TEST NOTE 1. FOR POLAR OPERATION, BACK OFF BIA  
BY REVERSING TEST CLIPS AS INDICATED OR BY R

REPRODUCED FROM DWG. 21260-SD-131

Dist. Class. 400AC  
600AC

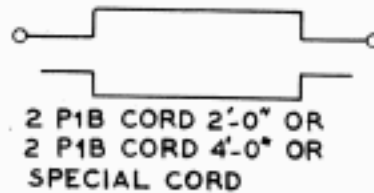
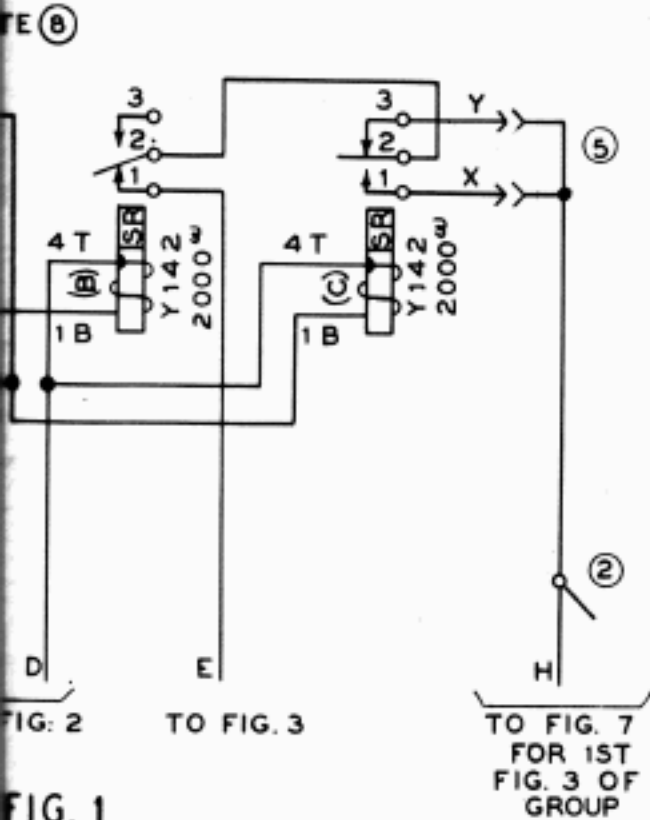


FIG. 5

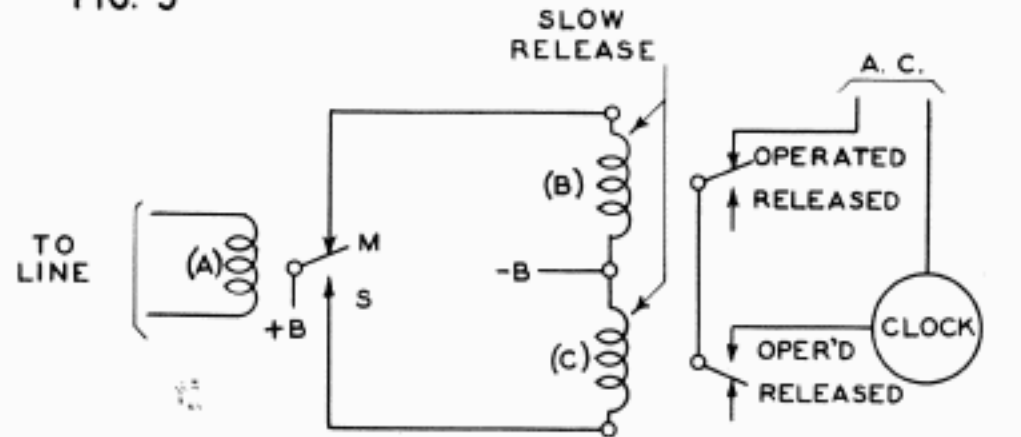


FIG. 8 THEORY SCHEMATIC  
NOTE 6

FIG. 1  
NOTE 8

FIG. 7 FOR  
1ST FIG. 3  
GROUP

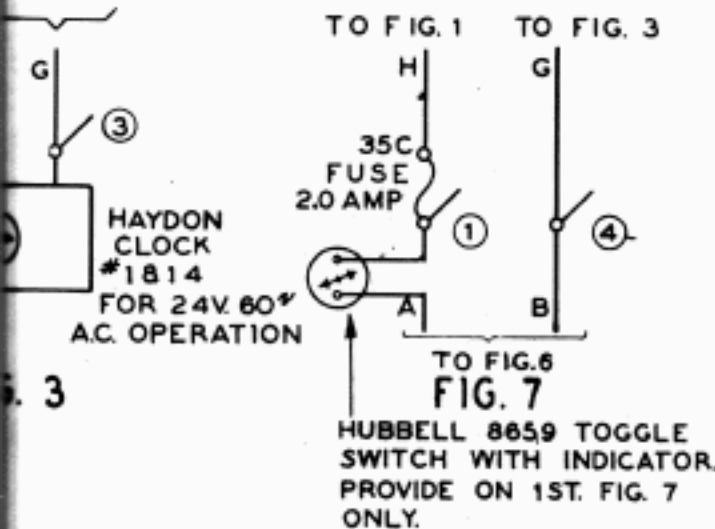


FIG. 7

NOTES

- 1 MULTIPLE TO 35B FUSE OF OTHER GROUPS OF 8 FIGS. 1.
- 2 MULTIPLE TO H LEAD OF 2-6 FIGS. 1 OF SAME GROUP.
- 3 MULTIPLE TO G LEAD OF 2-6 FIGS. 3 OF SAME GROUP.
- 4 MULTIPLE TO G LEAD OF 1ST. FIG. 3 OF OTHER GROUPS.
- 5 USE X WIRING TO MEASURE USED TIME. USE Y WIRING TO MEASURE IDLE TIME.

6 THEORY SCHEMATIC

LINE	RELAY A	RELAY B	RELAY C	CLOCK
STEADY MARK	M	OPERATED	RELEASED	STOPPED
STEADY SPACE	S	RELEASED	OPERATED	STOPPED
SIGNALS	M AND S	OPERATED	OPERATED	RUNS

- 7 PROVIDE FIGS. 4 AND 9 WHEN A SEPARATE JACK FIELD IS REQUIRED AT THE CLOCK LOCATION.
- 8 WHEN REQUIRED PROVIDE 88D FILTER FIG. 10 FOR (A) RELAY, FIG. 1.

21260-SD-131

CIRCUIT REQUIREMENTS

B.S.P. FIG.	MECH. REQ.	CONT. PRESS.	ARM TR'V'L	BLOCK OR INSULATE	CIRCUIT PREPARATION		TEST SET PREP.	SEE TEST NOTE	TEST WDG.	TEST FOR	DIRECT CURRENT FLOW REQ.			REMARKS						
					CONN. BATT.	CONN. GR'D					TEST	AFTER SOAK	TEST		REGL.					
																M.A.	M.A.	M.A.		
3					4 (A)	1 (A)	NGB		O	60	35	33	FOR 60 MIL OPERATION							
														4 (A)	1 (A)	NGB	R	60	10	10.5
														4 (A)	1 (A)	NGB	O	20	12	11.
														4 (A)	1 (A)	NGB	R	20	3.5	3.8
														4 (A)	1 (A)	NGB	O	—	10	10
42	175/164	H	47	A(NO)	1B(B)	4T(B)	NGB	1	O	20	17.5	16.5	FOR POLAR OPERATION							
														1B(B)	4T(B)	NGB	H	20	1.5	1.4
														1B(B)	4T(B)	NGB	R	20	.8	1.0
42	175/164	H	47	A(O)	1B(C)	4T(C)	NGB		O	20	17.5	16.5								
														1B(C)	4T(C)	NGB	H	20	1.5	1.4
														1B(C)	4T(C)	NGB	R	20	.8	1.0

- 9 SEE P 90.957 FOR WIRING AND 21260-ED-105 & 106 FOR EQUIPMENT ARRANGEMENT AND BSP SECTION P31.907 FOR CKT. DESCRIPTION.

RECORDING ARRANGMENT

TO MEASURE IDLE OR USED TIME  
ON A TELETYPEWRITER CIRCUIT  
FOR EITHER POLAR OR NEUTRAL CIRCUITS  
SCHEMATIC

FOR POLAR OPERATION, BACK OFF BIASING SPRING COMPLETELY. TEST FOR OPERATION TEST CLIPS AS INDICATED OR BY REVERSE KEY ON 35 TYPE TEST SET.