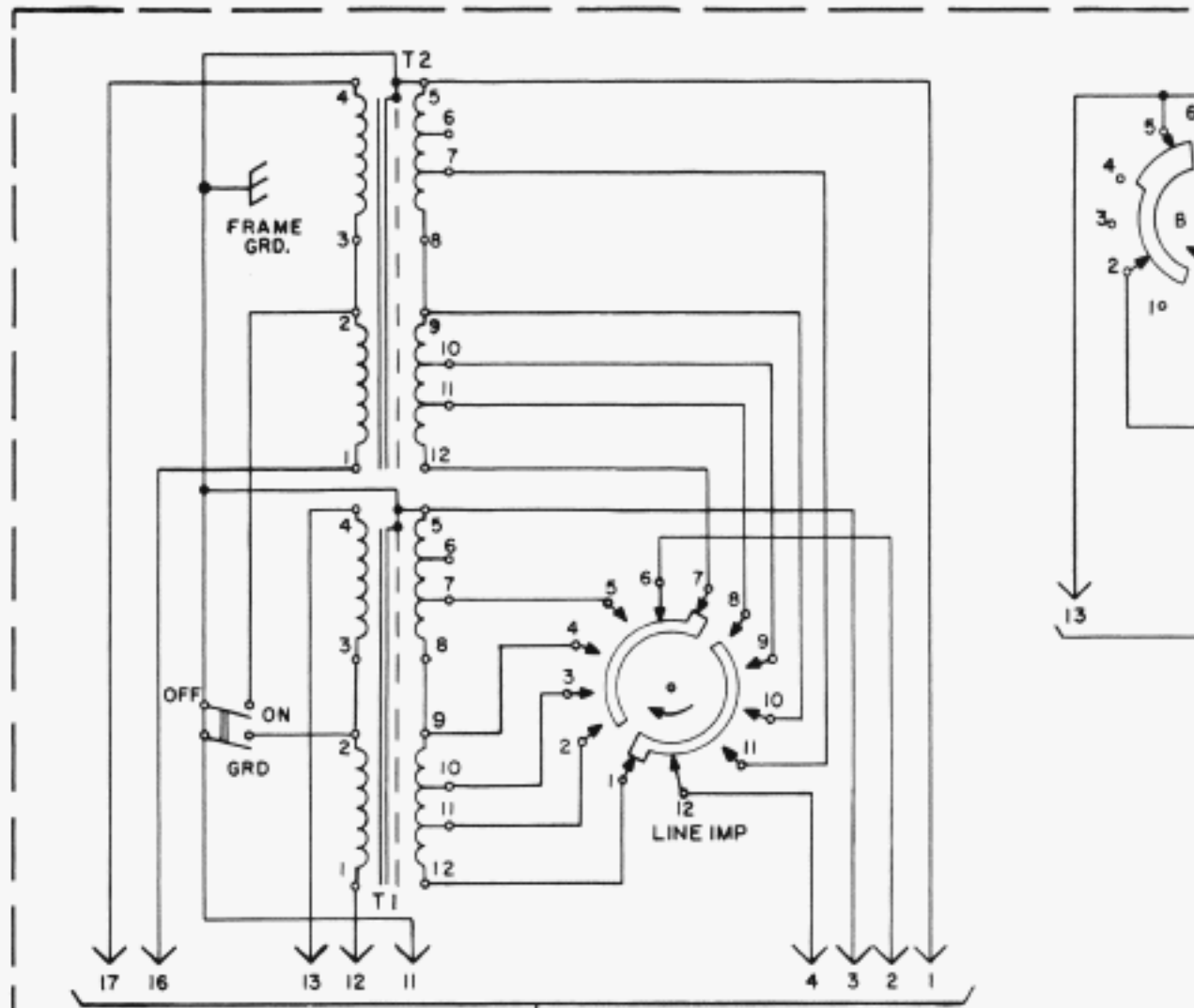


STATION IDENTIFICATION



TO FIG. 1
FIG. 4
FOR FOUR WIRE OPERATION

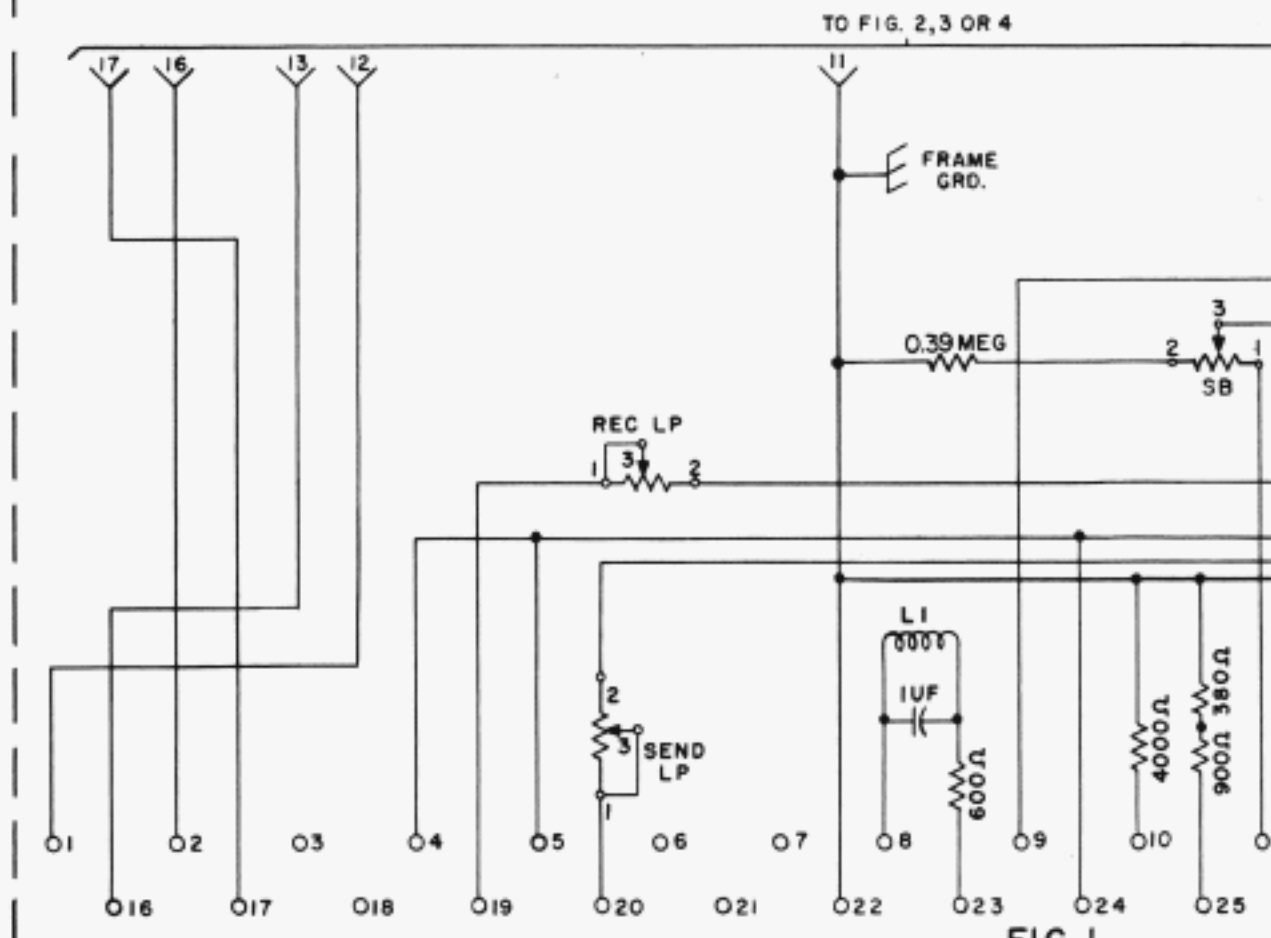
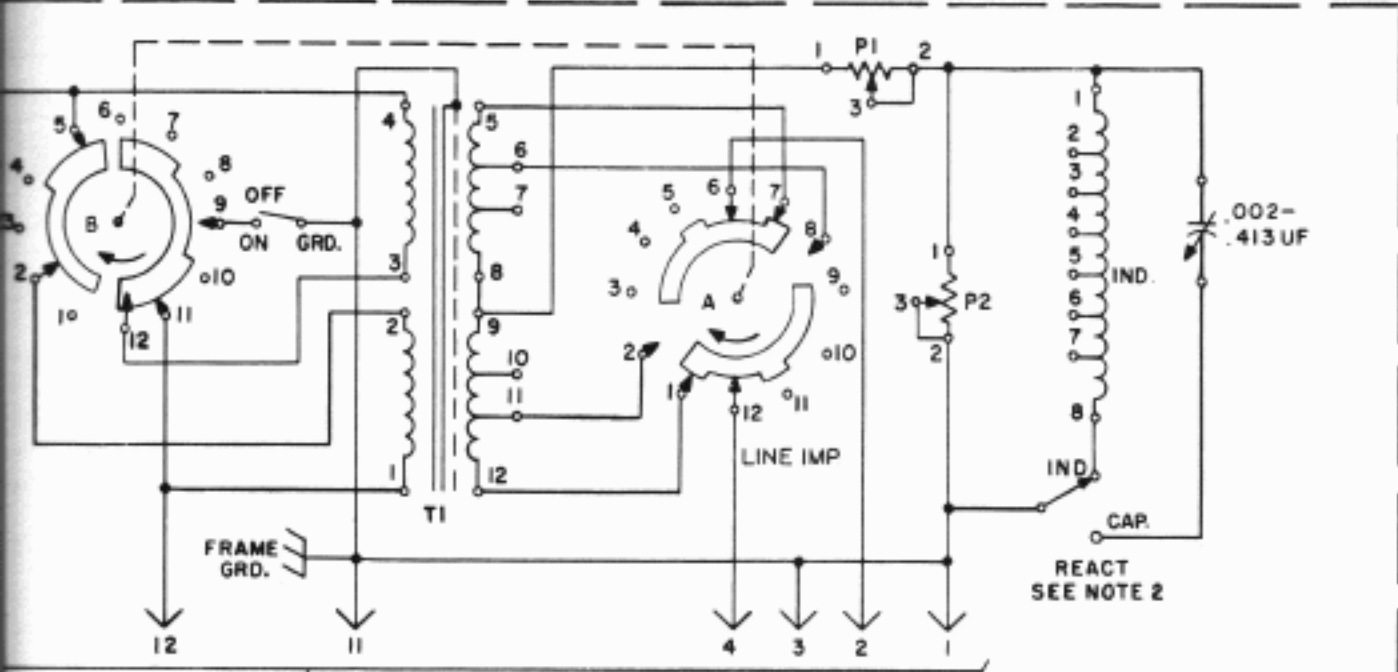
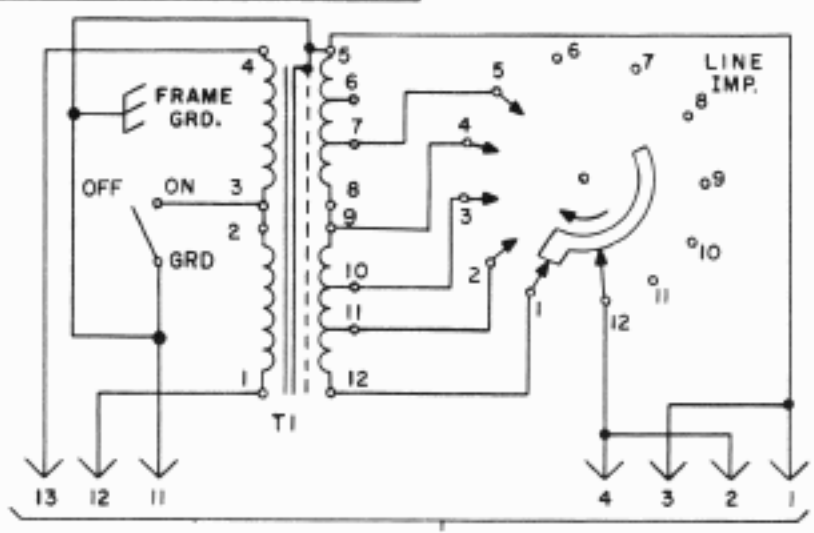


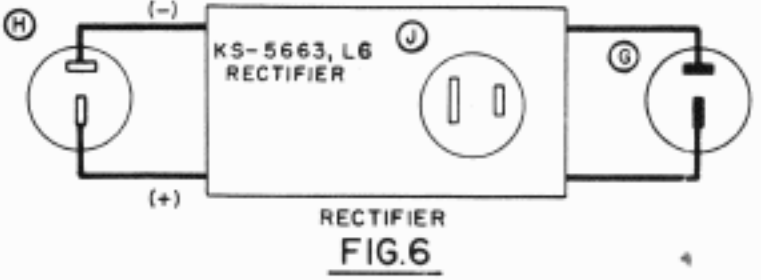
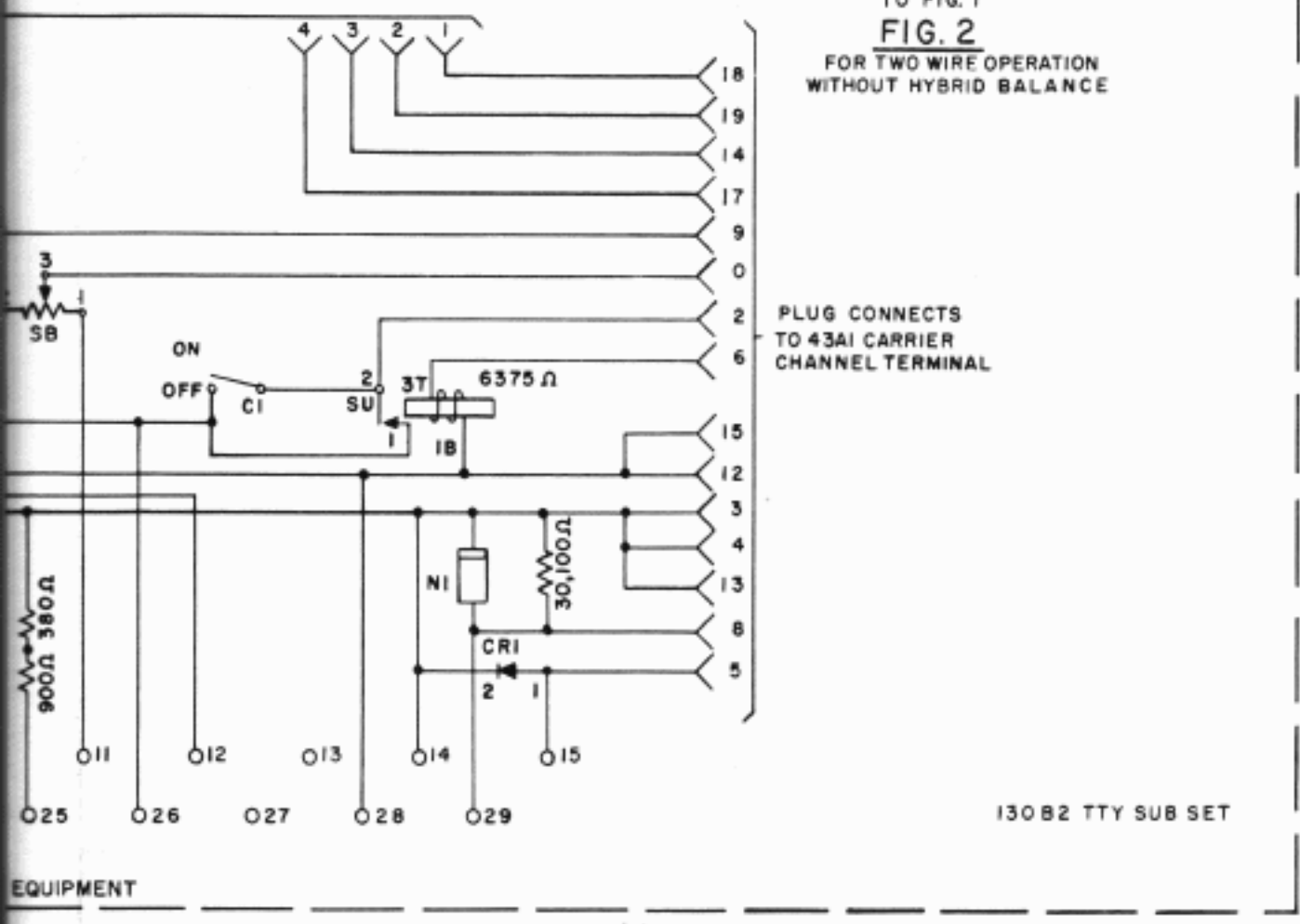
FIG. 1
130 B2 TTY SUB. SET - COMMON EQUIPMENT



TO FIG. 1
FIG. 3
FOR TWO WIRE OPERATION
WITH HYBRID BALANCE



TO FIG. 1
FIG. 2
FOR TWO WIRE OPERATION
WITHOUT HYBRID BALANCE



RECTIFIER
FIG. 6

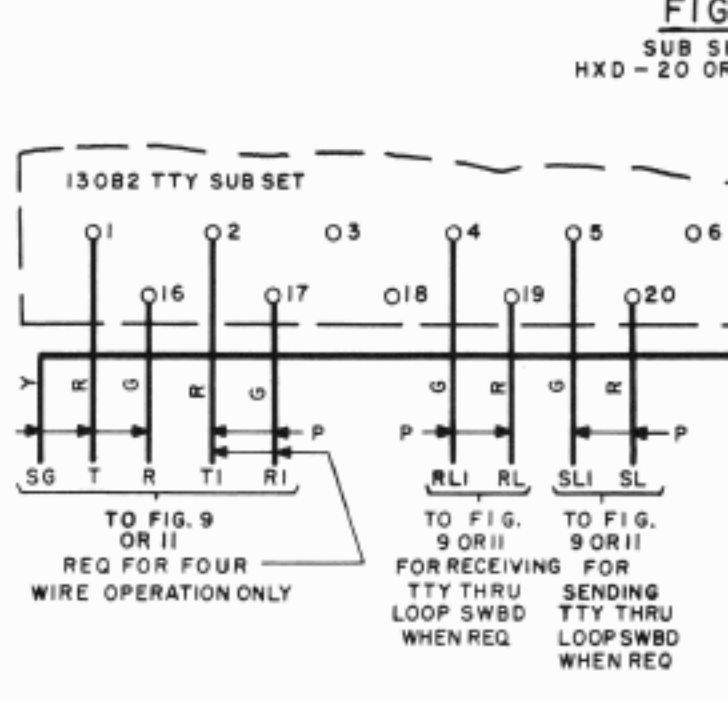
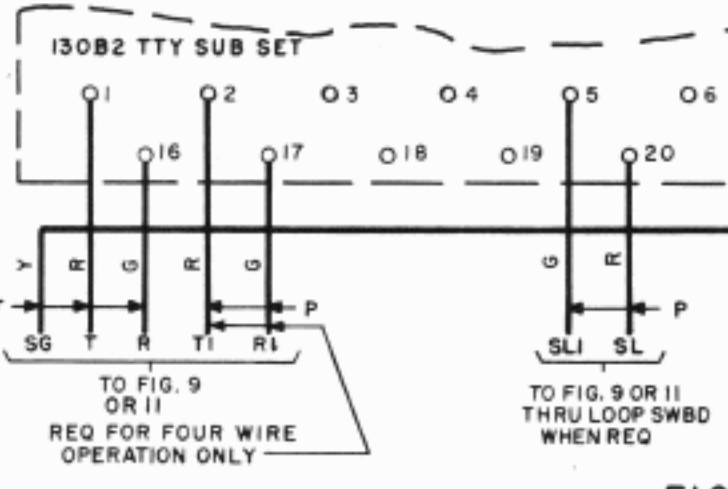
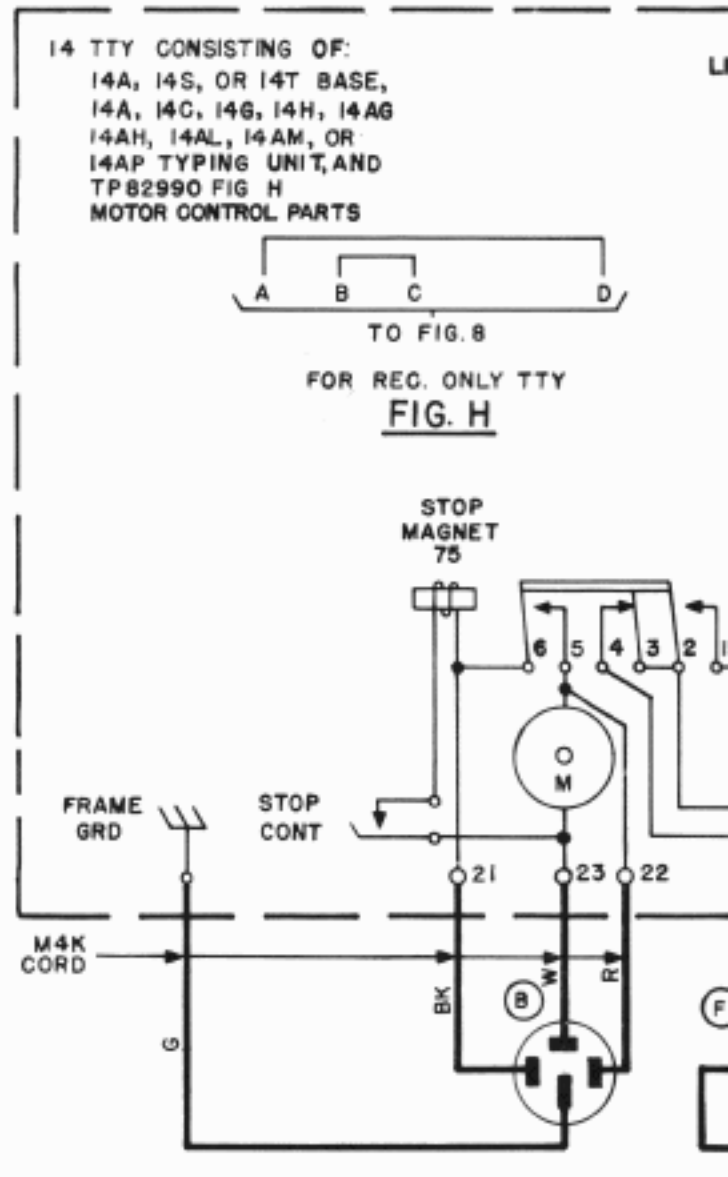
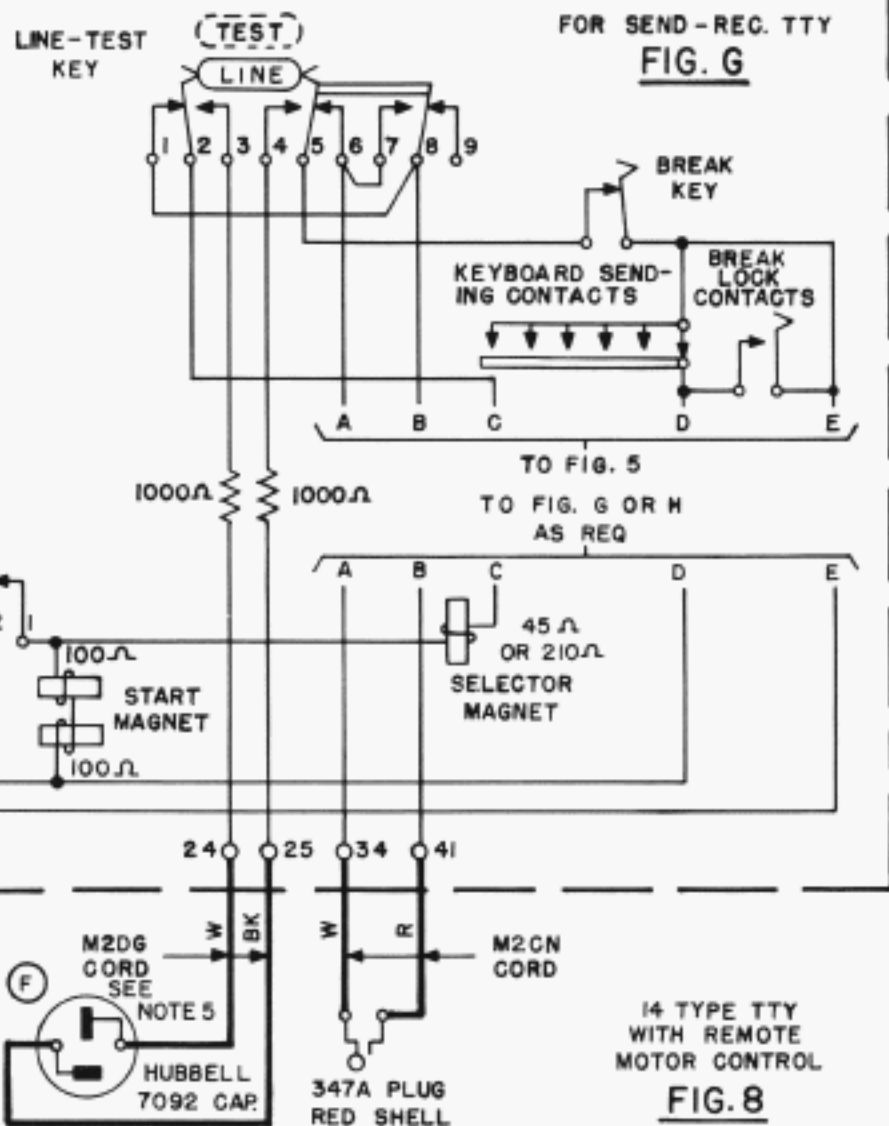
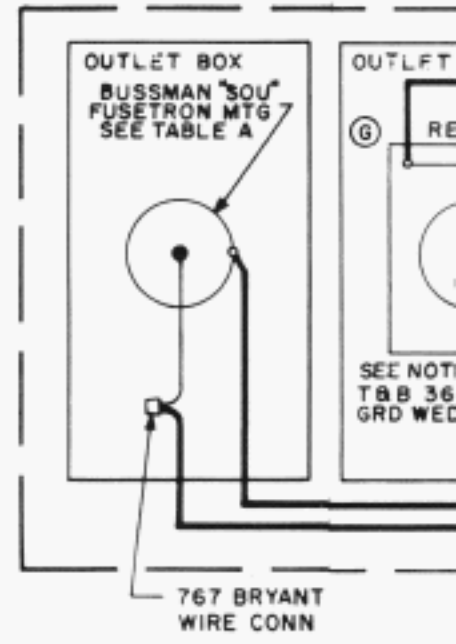
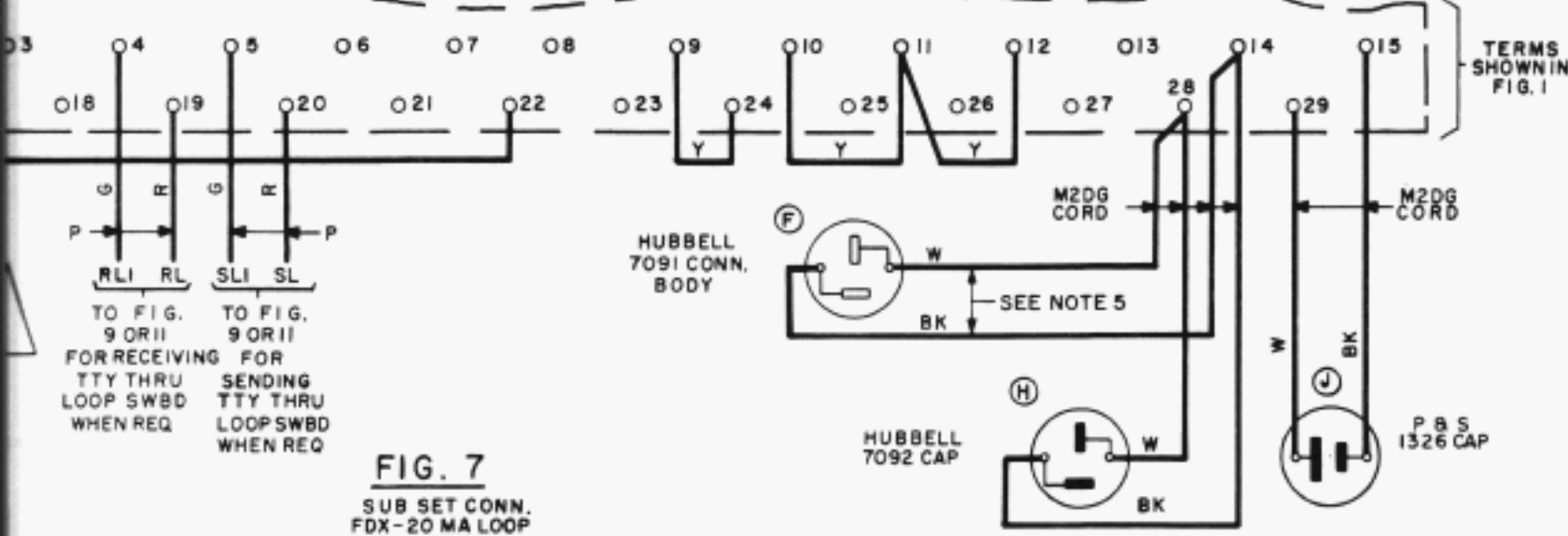
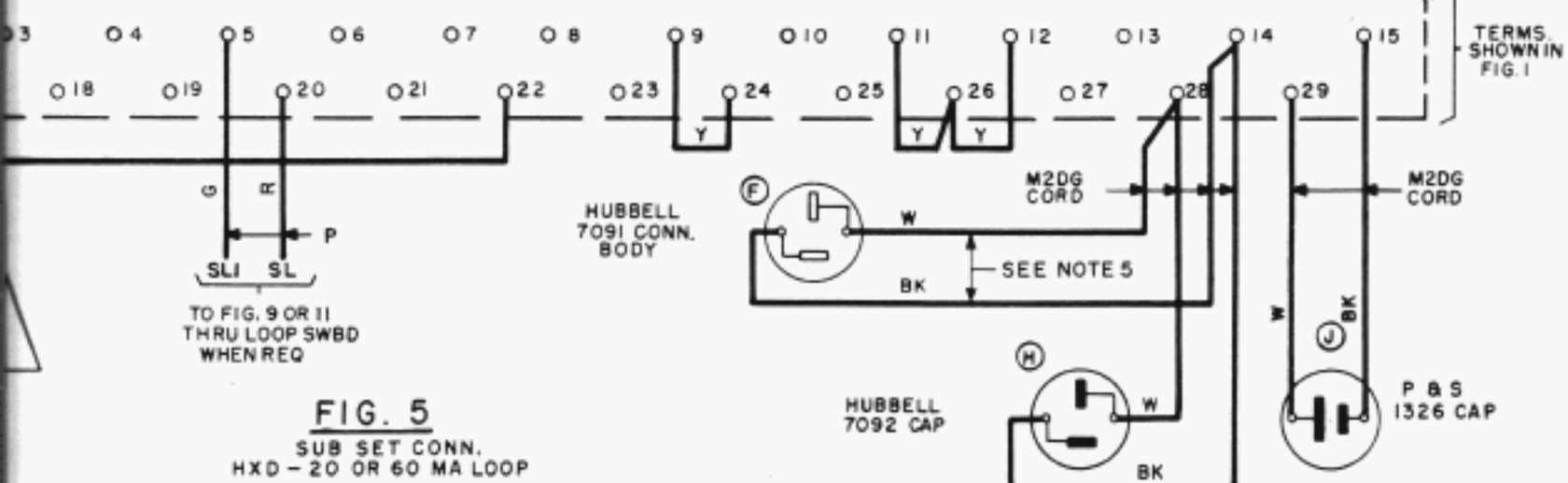
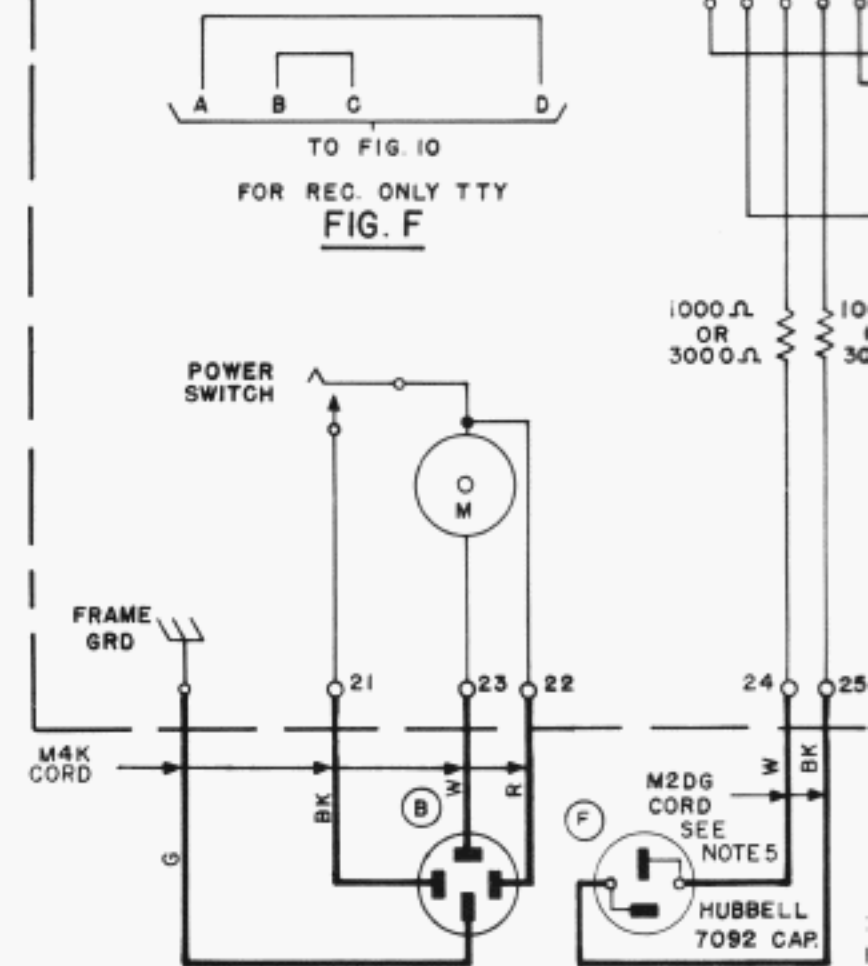


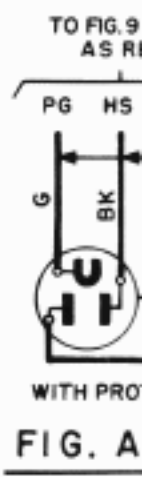
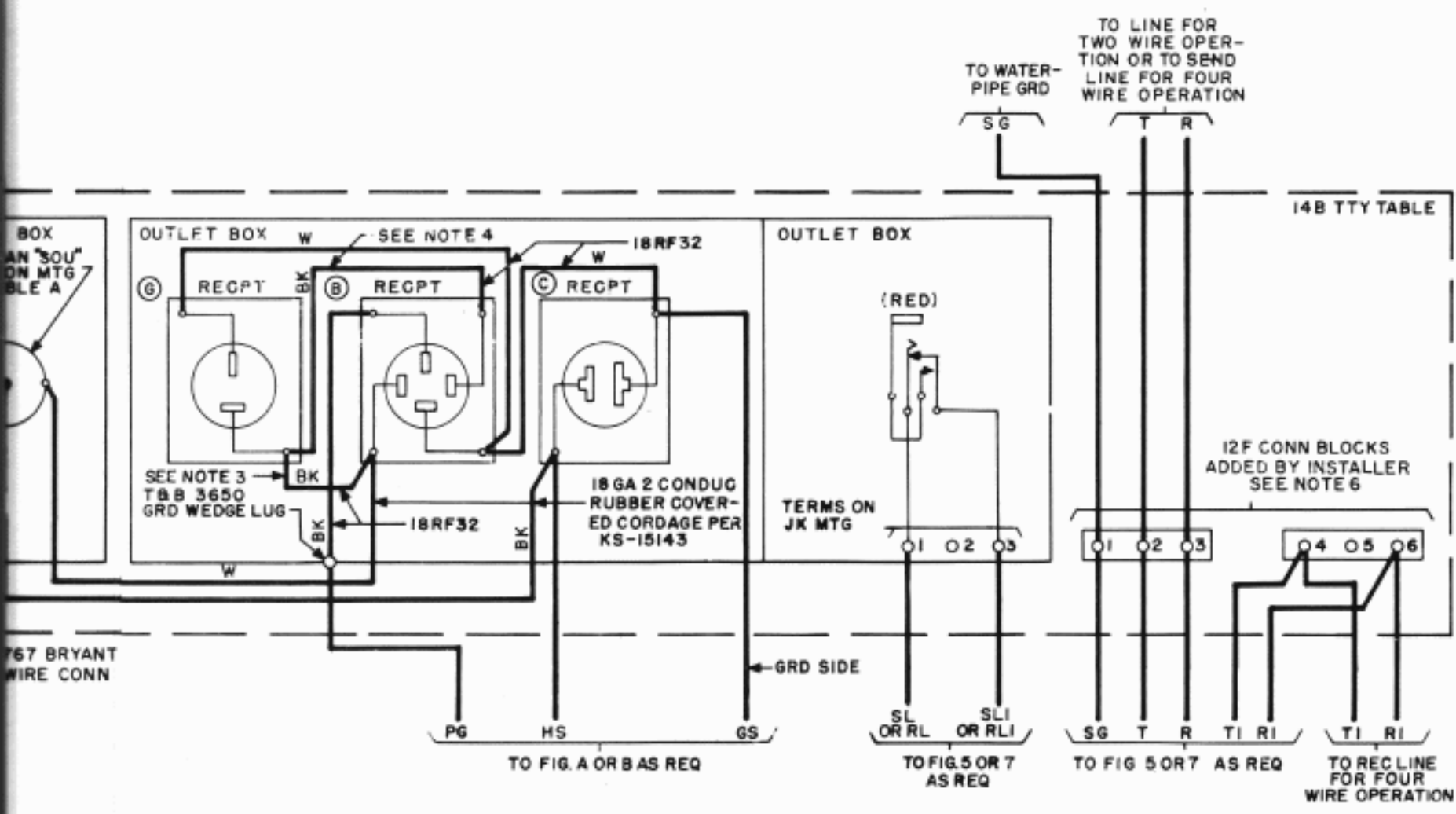
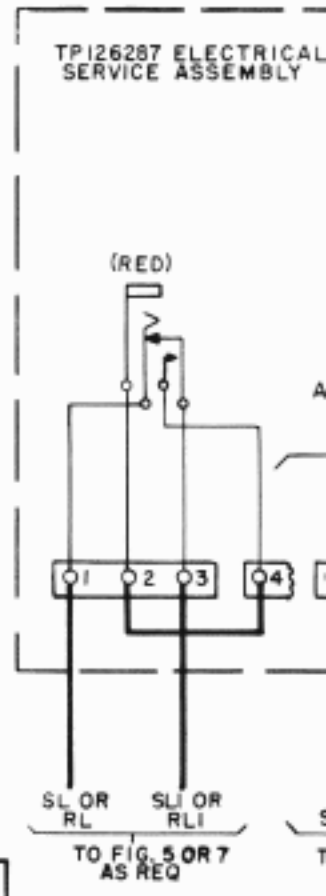
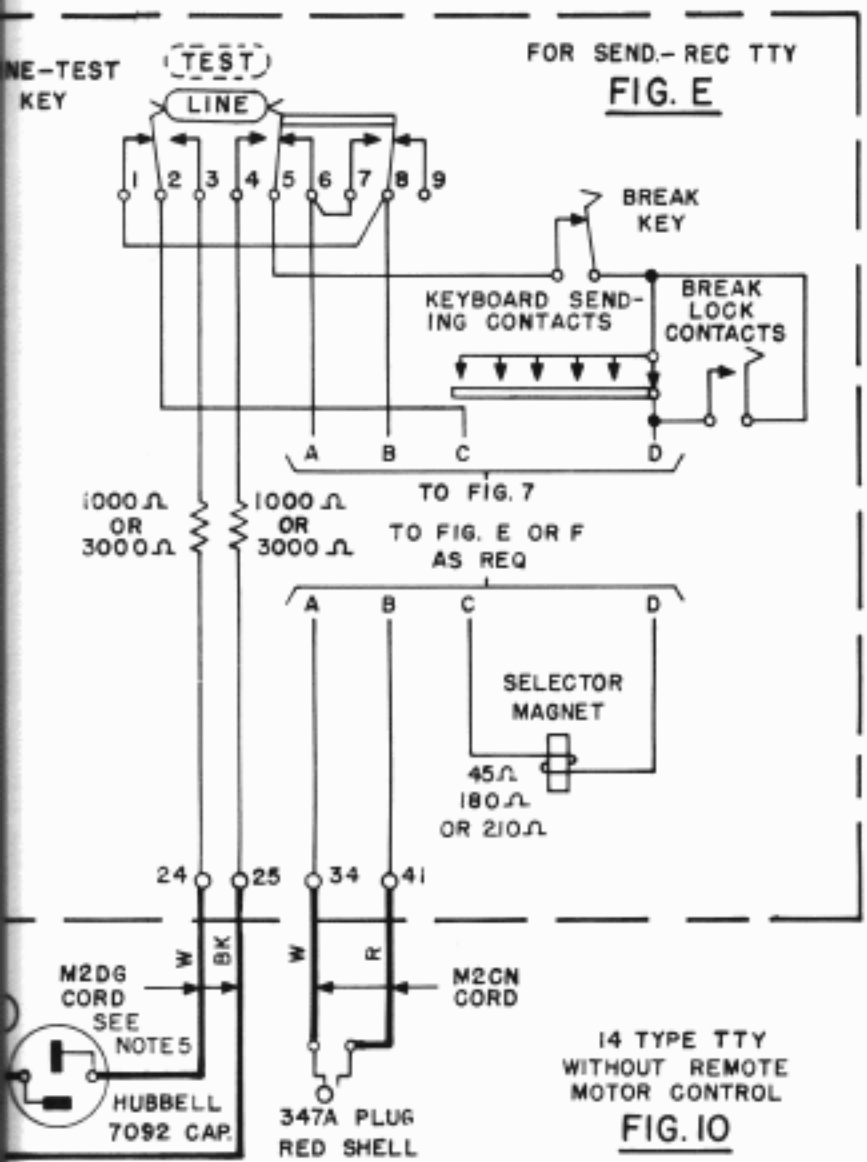
FIG. 5
SUB SET
HXD-20 OR

BASE,
14AG
OR
AND
TS
TO FIG. 8
OR REC. ONLY TTY
FIG. H



14 TTY CONSISTING OF:
14A, 14S, OR 14T BASE, AND
14A, 14C, 14G, 14H, 14AG,
14AH, 14AL, 14AM, OR
14AP TYPING UNIT





14B TTY TABLE CONNECTIONS
FIG. 9

NOTES:

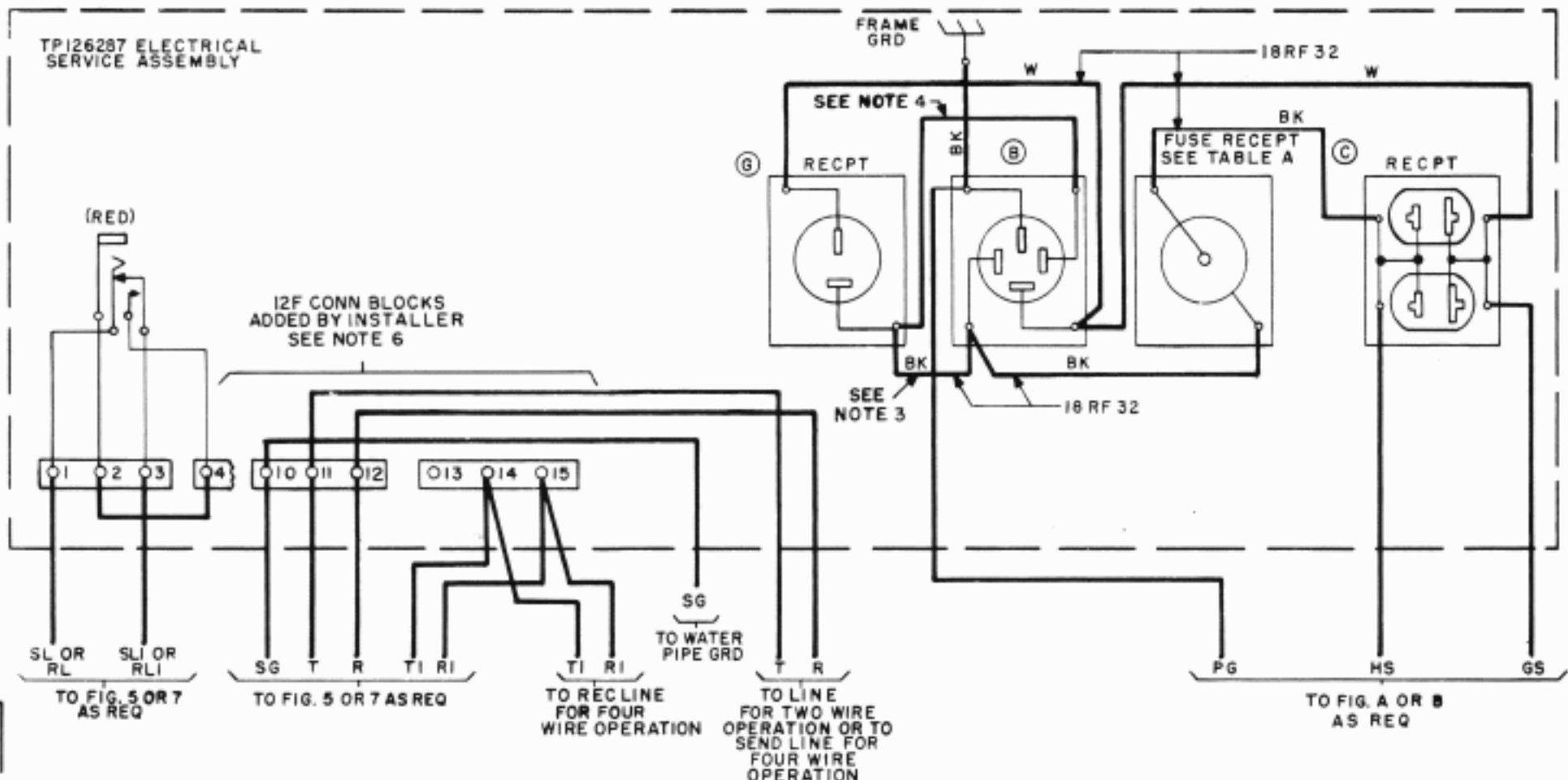
1. UNLESS OTHERWISE SPECIFIED ALL COLORED LEADS SHALL BE 22 GA. BROWN, TYPE GS STATION WIRE PER AT & T CO SPEC 7089.
2. ADJUSTMENT OF THESE REACTANCES IS DESCRIBED IN THE BSP.
3. THIS STRAP SHALL ONLY BE PROVIDED WHERE THE 130V RECTIFIER FOR THE 130B2 SUB SET IS NOT TO BE UNDER THE CONTROL OF THE TELETYPEWRITER POWER SWITCH
4. THIS STRAP SHALL ONLY BE PROVIDED WHERE THE 130V RECTIFIER FOR THE 130B2 SUB SET IS TO BE UNDER THE CONTROL OF THE TELETYPEWRITER POWER SWITCH
5. REQUIRED ONLY WHEN LOCAL TEST FEATURE IS FURNISHED.
6. FOR FULL DUPLEX OPERATION MOUNT THE 130B2 SET AND THE ADDED CONNECTING BLOCKS ON THE TABLE OF THE SEND-RECEIVE TTY.

MOTOR	FUSETRON
A-C SYNCH	T 3.2
A-C SER.	T 1.6

TABLE A

"M" PLANS USED	

TABLE B



XRT 200 OR
XRT 201 TTY TABLE
REMOTE MOTOR CONTROL
IN TTY

FIG. 11

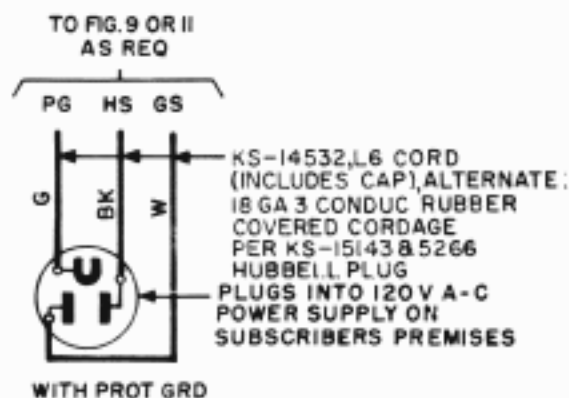


FIG. A

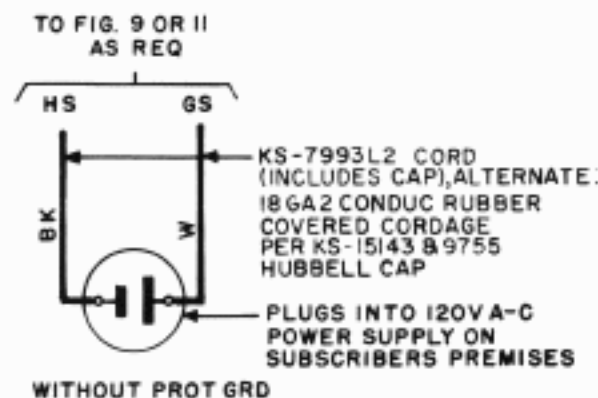


FIG. B

TTY STATION WIRING
130B2 TTY SUB SET
PRIVATE LINE SERVICE
14TTY & 14B OR XRT 200 TTY TABLE