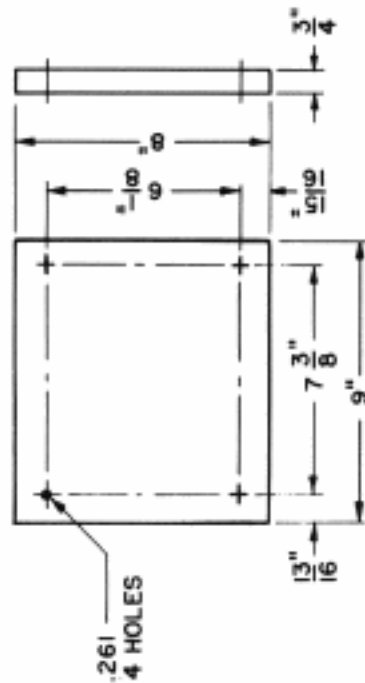
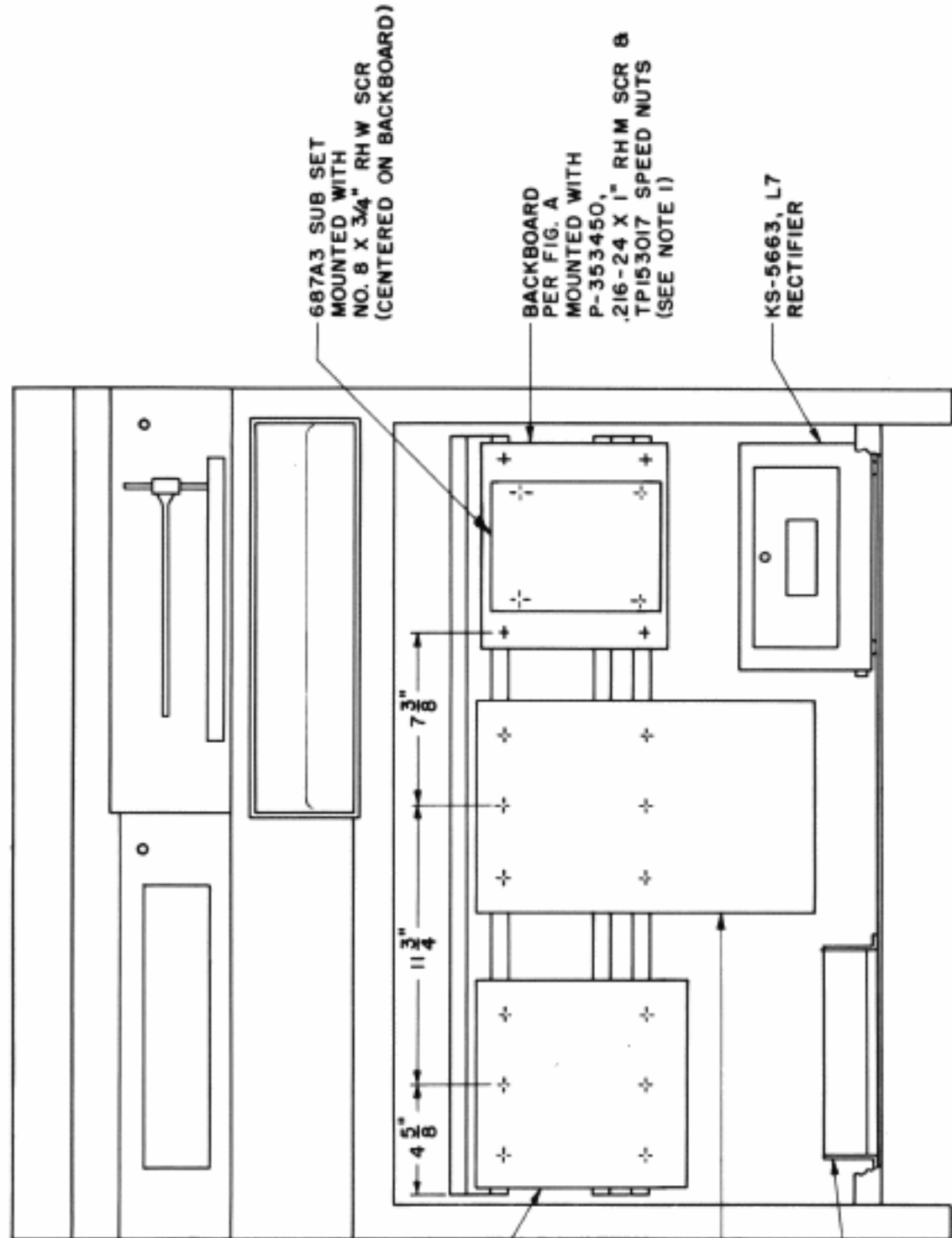


- NOTES:
1. TPI53017 SPEED NUTS MADE BY TINNEMAN PRODUCTS, INC., PART NO. C509-1224-4.
  2. BACKBOARD MOUNTING FOR 687A3 SUB SET, MADE FROM BIRCH OR MAPLE. FINISH TO BE BLACK LACQUER, 122-R.



SEE NOTE 2  
FIG. A



- 120C2 TTY SUB SET  
(UNATTENDED SERVICE ONLY)  
MOUNTED WITH  
P-353446,  
.216-24 X 3/8" RH M SCR &  
TPI53017 SPEED NUTS  
(SEE NOTE 1)
- 128C3 TTY SUB SET  
MOUNTED WITH  
P-353446,  
.216-24 X 3/8" RH M SCR &  
TPI53017 SPEED NUTS  
(SEE NOTE 1)
- 152A1 60 ~  
INDUCTION SUPPRESSION UNIT  
WHEN REQD

- 687A3 SUB SET  
MOUNTED WITH  
NO. 8 X 3/4" RH W SCR  
(CENTERED ON BACKBOARD)
- BACKBOARD  
PER FIG. A  
MOUNTED WITH  
P-353450,  
.216-24 X 1" RH M SCR &  
TPI53017 SPEED NUTS  
(SEE NOTE 1)
- KS-5663, L7  
RECTIFIER

FRONT PANEL REMOVED  
FIG. 1