

INSTALLATION OF 152A1 60-CYCLE INDUCTION SUPPRESSION UNIT

1. GENERAL

1.01 This section furnishes information for the installation of the 152A1 60-cycle induction suppression unit, used where needed to suppress inductive interference from commercial power lines. The unit is an option with 128C-type teletypewriter subscriber sets when these are used for one-wire operation. The unit also has other possible uses in reducing 60-cycle interference.

1.02 Fig. 1 is the circuit label showing the wiring for the unit, which is composed of inductors and capacitors.

1.03 The 152A1 unit is mounted in a sheet-metal cabinet on a removable mounting. The cabinet is particularly suited to space available in the 15N teletypewriter table, but may be mounted in or on all other teletypewriter tables where required.

2. INSTALLATION INFORMATION

2.01 Fig. 2 shows the overall size and mounting arrangements of the 152A1 unit cabinet assembly.

2.02 Mount the 152A1 unit as shown on the Station Assembly Plans provided in Bell System Practices, for the various teletypewriter tables:

<u>TABLE</u>	<u>SA PLAN</u>	<u>BSP</u>
15N	SA5.31	P30.655, P90.024
19A	SA6.27	P30.656, P90.025
XRT200 and XRT201	SA7.12	P30.658
XRT205 and XRT206	SA8.05	P30.659

2.03 Wire the unit to the subscriber set according to wiring instructions given in BSP Sections P30.562 and P31.232.

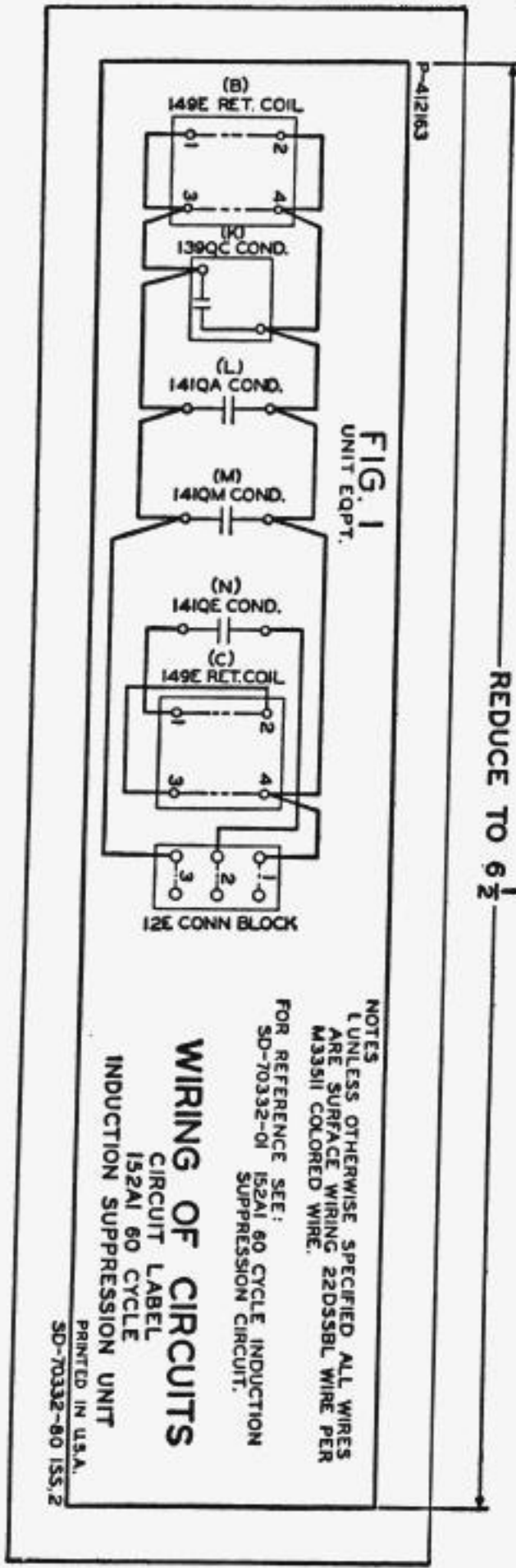
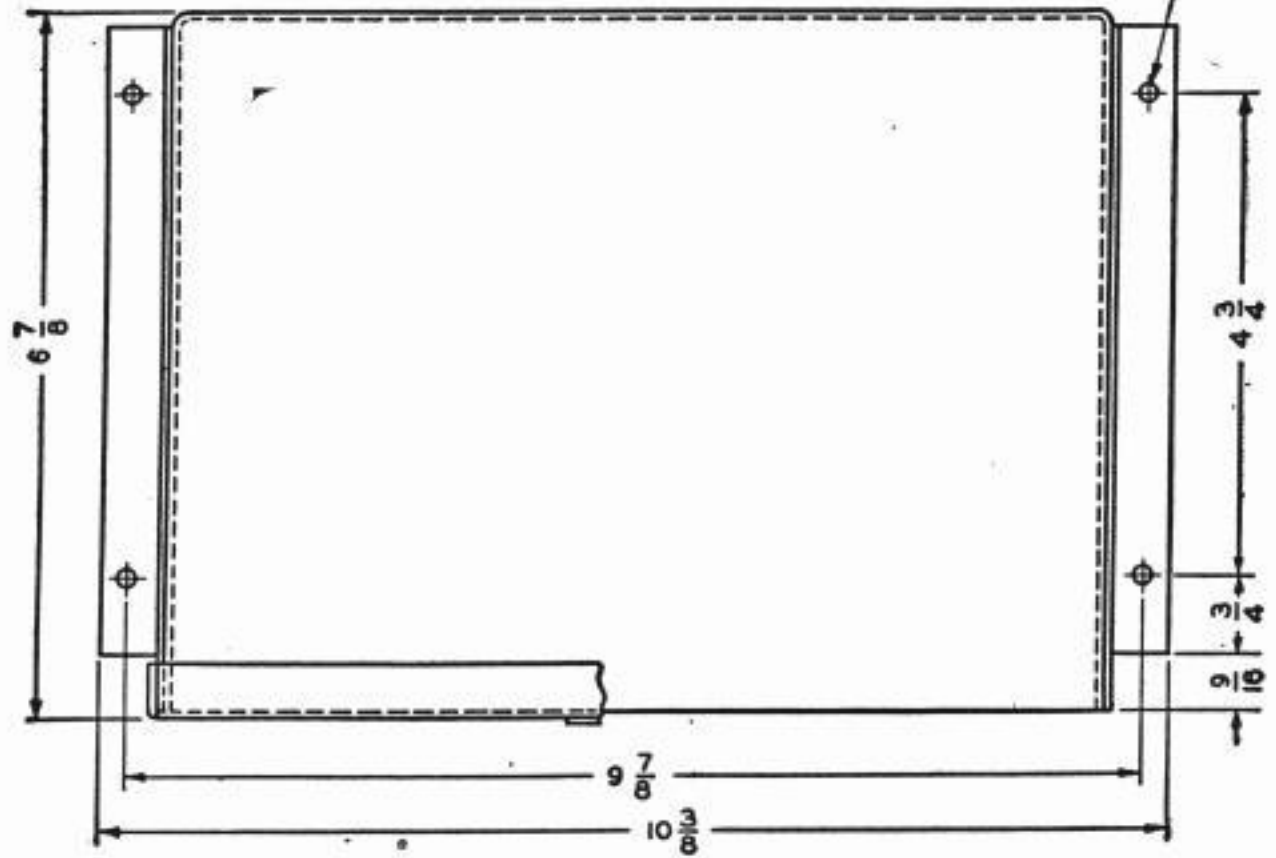
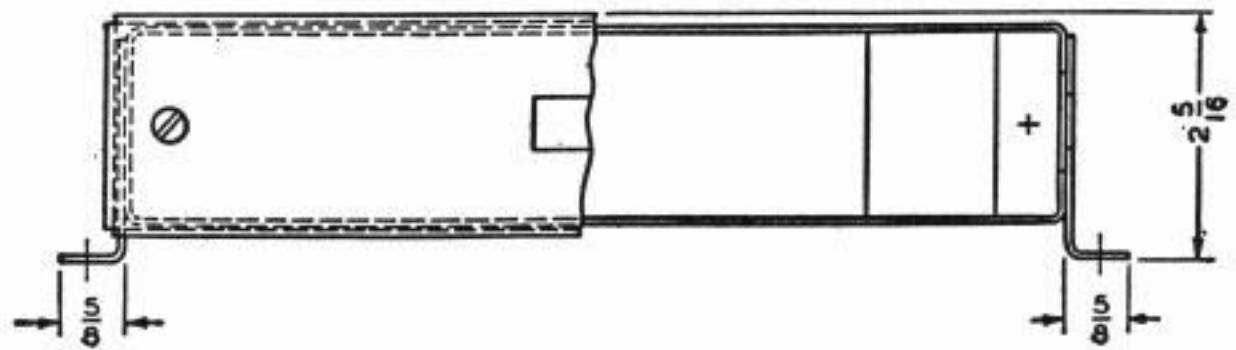


Fig. 1

ALL HOLES .191
NO. 8 X 1/2 R.H.B.W. SCR.
FURNISHED WITH UNIT
SEE NOTE 1



PLAN VIEW



FRONT VIEW

NOTES:
1. SEE 5A PLANS FOR ITEMS
REQUIRED FOR INSTALLATION
ON METAL TABLES.

Fig. 2

P31.375

Page 3
3 Pages

INSTALLATION OF 152A1 60-CYCLE
INDUCTION SUPPRESSION UNIT