

BELL SYSTEM PRACTICES
Teletypewriter Stations

SECTION P31.315
Issue 2, January, 1958
AT&TCo Standard

INSTALLATION OF TP92243 SET OF PARTS FOR COUNTER CONTROL CONTACTS OF 15A, 15B AND 15C PERFORATOR-TRANSMITTERS

1. GENERAL

1.01 This section furnishes information for the installation of the TP92243 set of parts on 15A, 15B and 15C perforator-transmitters. The function of these parts is to suppress radio frequency induction from the counter control contacts.

1.02 This section is reissued to bring the codes for the set of parts up to date. Marginal arrows indicating changes have been omitted.

1.03 The TP92243 set of parts consists of the following units:

- 2—TP81825 Capacitors
- 4—TP125139 Mounting Screws
- 4—TP3640 Lock Washers

2. PROCEDURE

2.01 To install the filter unit proceed as follows:

(1) Using two of the TP125139 screws and TP3640 lock washers furnished, mount one TP81825 capacitor on the vertical face of the TP92225 filter unit bracket with the capacitor leads extending toward the counter control contact terminals.

(2) Using the other two TP125139 screws and TP3640 lock washers furnished, mount the other TP81825 capacitor unit on the top surface of the horizontal face of the TP92225 filter unit bracket with the capacitor leads toward the counter control contact terminals.

2.02 Refer to Fig. 1 and connect the capacitors of the TP92243 set of parts as follows:

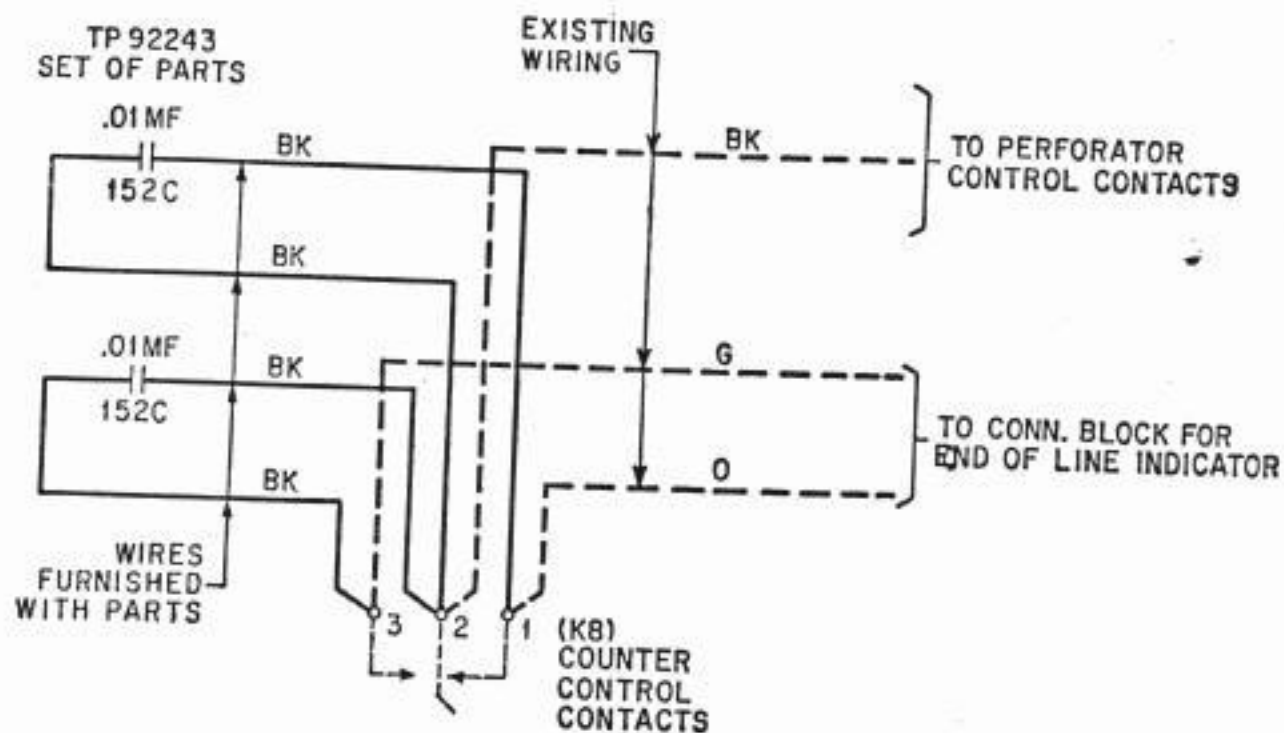


Fig. 1

- (1) Cut each of the two capacitor leads which are equipped with terminals to a length just sufficient to allow slack for extreme adjustment of the counter control contacts and skin the ends of the leads.
- (2) Connect both of these leads to the middle terminal of the counter control contacts.
- (3) Cut the upper lead of the vertically mounted capacitor to a length just sufficient to allow the counter control contacts to be adjusted to their extreme position, skin the end and connect the lead to the left terminal of the counter control contacts.
- (4) Cut the front lead of the horizontally mounted capacitor to a length just sufficient to reach the right-hand terminal of the counter control contacts if the contact assembly were adjusted to its extreme position, skin the end and solder this lead to the right-hand terminal.
- (5) Check the connections to see that they are in accordance with Fig. 1.