

**BELL SYSTEM PRACTICES**  
**Teletypewriter Stations**

**SECTION P31.314**  
**Issue 2, January, 1958**  
**AT&TCo Standard**

## **INSTALLATION OF TP92225 FILTER UNIT FOR UNIVERSAL BAR CONTACTS OF 15 PERFORATOR-TRANSMITTER**

### **1. GENERAL**

1.01 This section furnishes information for the installation of the TP92225 filter unit on the 15 perforator-transmitter. The function of this filter unit is to suppress radio frequency induction from the universal bar contact.

1.02 This section is being reissued to bring the codes for the filter parts up to date. Marginal arrows indicating changes have been omitted.

1.03 The TP92225 filter unit consists of the following parts:  
1—Filter Assembly  
2—TP1162 Screws

### **2. PROCEDURE**

2.01 To install the filter unit proceed as follows:

(1) Remove and discard the TP81605 chad chute cover and its two TP110434 mounting screws retaining the two TP3640 lock washers.

(2) Mount the TP92225 filter unit in place of the TP81605 chad chute cover using the two TP1162 screws furnished with the filter unit and the TP3640 lock washers removed in (1) with the 80A filter on the underside of the horizontal portion of the bracket and the coil toward the universal bar contacts.

2.02 Refer to Fig. 1 and connect the filter unit as follows:

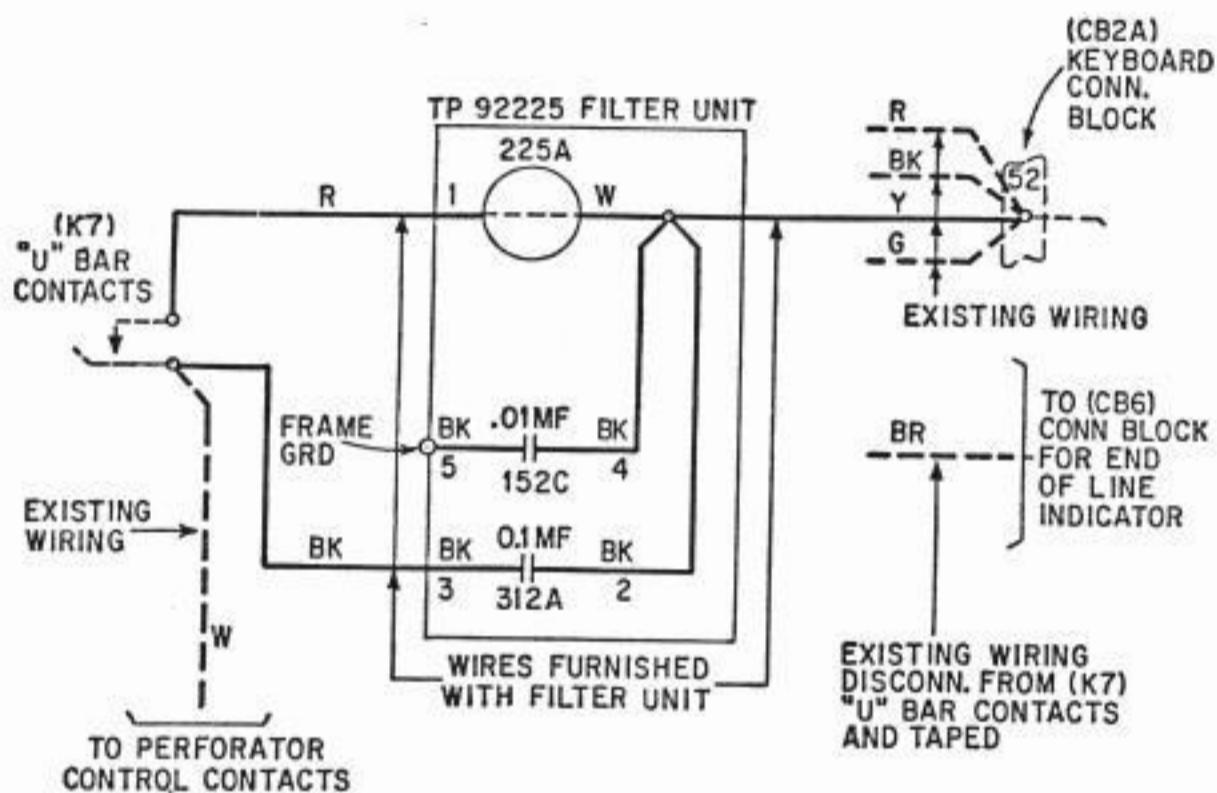


Fig. 1

- (1) Disconnect and tape the brown cable wire from the left contact terminal of the universal bar contacts.
- (2) Connect the red wire from the coil of the filter unit to the terminal from which the brown wire was removed.
- (3) Connect the yellow wire from the filter unit to terminal 52 of the keyboard connecting block and sew this wire to the cable.
- (4) Connect the black lead from the filter unit to the right contact terminal of the universal bar contacts to which the white cable wire is connected.

2.03 Secure the yellow wire to the top surface of the casting where this wire passes beneath the contacts to prevent mechanical interference between the wire and the contacts.