

BELL SYSTEM PRACTICES
Teletypewriter Stations

SECTION P31.313
Issue 2, January, 1958
AT&TCo Standard

INSTALLATION OF TP92224 FILTER UNIT FOR CAM PULSING CONTACTS OF 15 PERFORATOR-TRANSMITTER

1. GENERAL

1.01 This section furnishes information for the installation of the TP92224 filter unit on the 15 perforator-transmitter. This filter unit mounts on the bracket of the TP92222 sending contact filter unit. Its function is to suppress radio frequency induction from the cam pulsing contacts.

1.02 This section is reissued to bring the codes for the filter parts up to date. Marginal arrows indicating changes have been omitted.

1.03 The TP92224 filter unit consists of the following parts:
1—Filter Assembly
2—TP6746 Screws

2. PROCEDURE

2.01 To install the filter unit proceed as follows:

(1) Remove and discard the two TP74059 screws which mount the 80A filter of the TP92222 filter unit on its bracket. Retain the two TP2191 lock washers used with these screws.

(2) Mount the TP92224 filter unit and the 80A filter of the TP92222 filter unit on the sending contact filter bracket using the two TP6746 screws furnished with the TP92224 filter unit and the two TP2191 lock washers which were previously removed.

(3) The bracket of the TP92224 filter unit should be between the sending contact filter bracket and its 80A filter with the coil toward the right and the filter leads directly above the terminals of the cam pulsing contact terminals.

2.02 Refer to Fig. 1 and connect the leads of the TP92224 filter unit as follows:

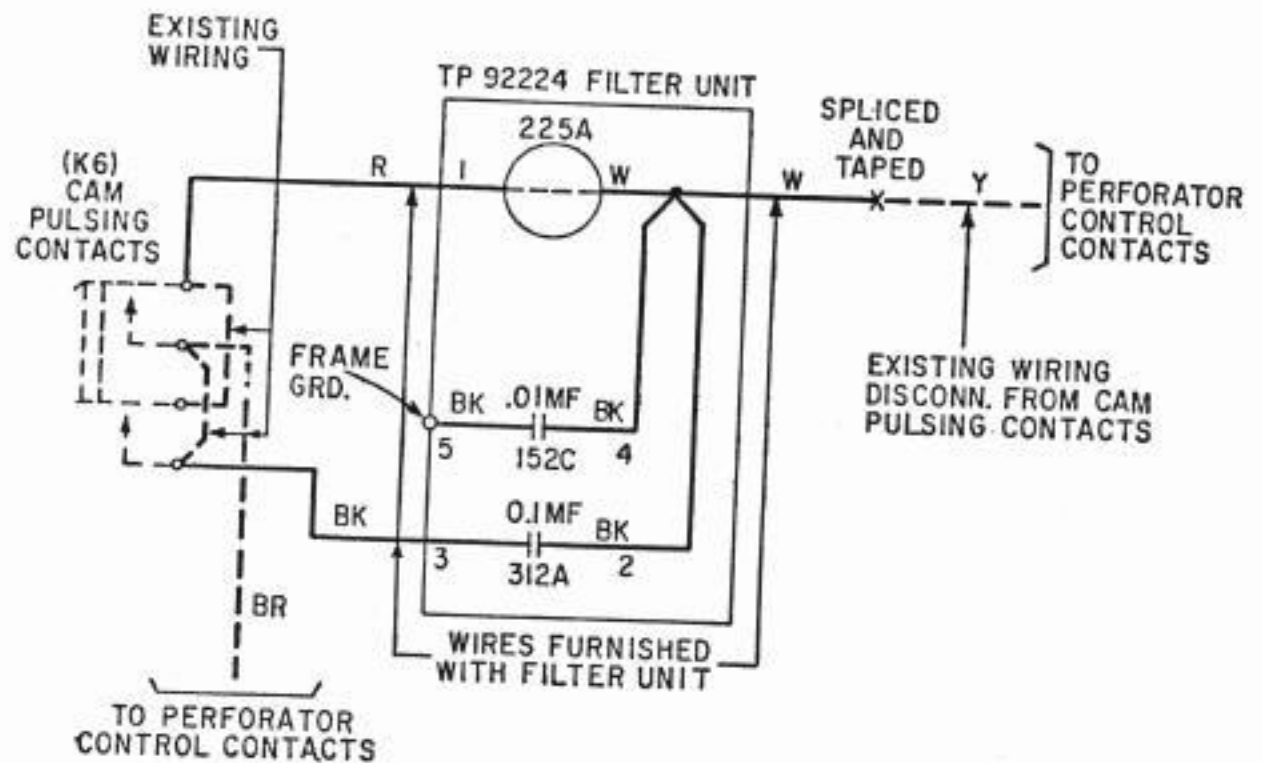


Fig. 1

- (1) Disconnect the yellow cable lead (not the jumper wire) from the upper rear cam pulsing contact terminal.
- (2) Connect the red wire from the coil of the TP92224 filter unit to the terminal from which the yellow wire was removed.
- (3) Splice the yellow wire, removed in (1) to the white wire of the filter unit.
- (4) Connect the black wire from the filter unit to the front lower contact terminal of the cam pulsing contacts to which the brown jumper wire is connected.