

BELL SYSTEM PRACTICES
Teletypewriter Stations

SECTION P31.306
Issue 2, May, 1952
AT&T Co Standard

INSTALLATION OF TP92226 FILTER UNIT FOR SENDING SEGMENTS OF 14 OR 20 TRANSMITTER-DISTRIBUTORS

1. GENERAL

1.01 This section furnishes information for installation of the TP92226 filter unit on 14 or 20 transmitter-distributors. The function of this filter unit is to suppress radio-frequency induction from the sending segments and brushes of the distributor.

1.02 This section is reissued to include a ground wire from the frame ground of the TP92226 filter unit to terminal 4 of CB1. Also the prefix TP is used to identify Teletype Corporation part numbers.

1.03 The ground connection is provided so that the frame of the teletypewriter may be grounded as required to reduce shock hazard to personnel. General principles covering grounding and the exceptional cases when the frame should not be grounded are discussed in Section P31.301.

1.04 The TP92226 filter unit consists of the following parts:

- 1 TP106020 Filter Assembly with Bracket
- 1 TP6745 Screw
- 1 TP6811 Screw
- 1 TP2191 Lock Washer
- 1 TP2669 Lock Washer
- 1 TP7002 Washer
- 1 TP3438 Washer

2. PROCEDURE

2.01 Mount the TP92226 filter unit in the base of the transmitter-distributor, proceeding as follows:

- (1) Place the transmitter-distributor on its left side and remove the base plate.

- (2) Remove and discard the TP6746 screw and TP2191 lock washer which are used to mount the rear side of the TP125874 left bracket.
- (3) Scrape the paint from the bottom surface of the casting around the hole from which the TP6746 screw was removed and from the hole in the boss below the connector block (CB1). Clean the surfaces with a file or sandpaper.
- (4) Place the filter unit with the coils toward the connector block (CB1) and mount the front end of the filter bracket with a TP6811 screw using the TP2191 lock washer and the TP7002 washer (furnished with the filter) under the head of the screw. Place the screw in the hole from which the TP6746 screw was removed.
- (5) Mount the rear end of the filter unit bracket using the TP6745 screw, the TP2669 lock washer and the TP3438 washer (furnished with the filter) using the hole in the boss below the connector block (CB1).
- (6) Connect a black ground lead from the TP6745 screw (of para. (5)) to terminal 4 of the connector block (CB1). This lead is not furnished with the filter unit. (See note under para. 2.08.)

2.02 Referring to Fig. 1, connect the remaining leads of the filter unit as follows: **Fig. 1**

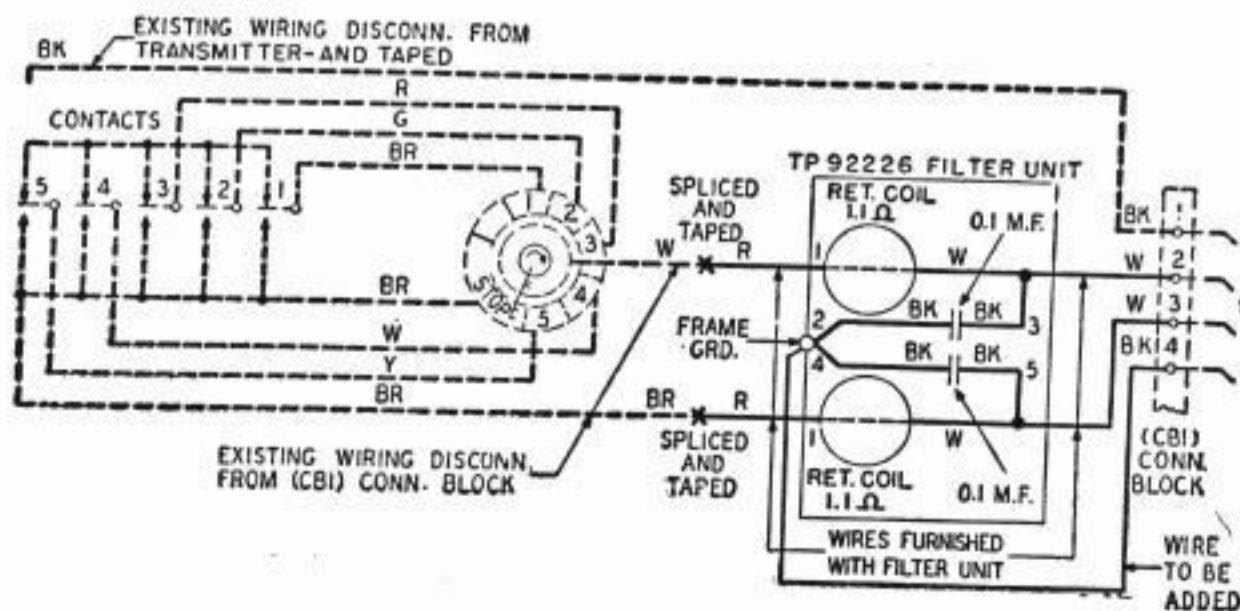


Fig. 1

- (1) Remove the brown lead from terminal 3 of CB1 and splice it to the red lead of the filter coil located farthest away from the bracket.

- (2) Connect the white lead of this coil to terminal 3 of CB1.
- (3) Remove the white lead from terminal 2 of CB1 and splice it to the red lead of the filter coil nearest the bracket.
- (4) Connect the white lead of this coil to terminal 2 of CB1.
- (5) Check the filter connections to see that they are in accordance with Fig. 1.

2.03 All filter leads should run direct (should not be formed into a cable) and should be separated by at least 1/4" from other leads of the transmitter-distributor.

2.04 If the distributor is equipped with a governed motor, the TP7036 (or TP78206) resistor unit should be reversed in its mounting so that the leads to the resistors are away from the filter unit. If the TP70887 nut on the TP4871 resistor mounting bolt interferes with the filter unit, reverse the TP4871 bolt.

2.05 Replace the base plate and set the distributor upright.

2.06 Remove the side cover from the tape-sending contact mechanism and disconnect the black lead from the front upper spacing contact terminal TP125882 and tape the end.

2.07 Replace the side cover.

2.08 To complete the ground connection, run a strap from slip-connector terminal 4 of the transmitter-distributor mounting-plate to the rear mounting-screw of the pile-up. In the 19A table, the flexible conduit attached to the mounting-plate carries the connection to the Crouse-Hinds box.

Note: If terminal 4 should be used for another purpose, use any other unused terminal for the ground connection.