

BELL SYSTEM PRACTICES
Teletypewriter Stations

SECTION P31.302
Issue 3, January, 1958
AT&TCo Standard

INSTALLATION OF TP93885 FILTER ASSEMBLY FOR SENDING CONTACTS OF 14 TELETYPEWRITERS AND TYPING REPERFORATORS

1. GENERAL

1.01 This section furnishes information for the installation of the TP93885 filter assembly on the 14 teletypewriter. The function of this filter unit is to suppress radio frequency induction from the teletypewriter sending contacts. The TP93885 filter assembly replaces the TP77614 and TP81809 filter units.

1.02 This section is being reissued to bring the codes for the various parts up to date. Because of the many changes marginal arrows have been omitted.

1.03 The TP93885 Filter Assembly consists of the following parts:

- 1—TP92221 Filter Unit
- 1—TP93881 Condenser (.01 mf.) and Bracket
- 2—TP80845 Screws
- 1—TP103971 Bracket

2. PROCEDURE

Removal of TP77614 or TP81809 Filter Unit

2.01 If the TP93885 filter assembly is being used to replace either the TP77614 or the TP81809 filter unit, first remove this unit and restore the wiring of the keyboard unit to normal as follows:

2.02 Disconnect the leads of the old filter unit from the sending contact terminals and the wires from the keyboard to the filter unit.

- 2.03 Remove the tape reel and remove the filter from the keyboard.
- 2.04 Connect the two black keyboard wires (on 14L Bases connect also the red wire from terminal 53) to the left-hand sending contact terminal and pull the two brown keyboard wires into position near the terminals.

Installation of TP93885 Filter Assembly

- 2.05 If the tape reel has not been removed, remove it and mount the filter unit on top of the line closing jack using the same two screws that mount the jack, discarding the metal plate used on top of the jack.
- 2.06 The TP103971 Bracket supplied with the filter assembly should be discarded. This bracket is used on 14 keyboards not equipped with flat type resistor mountings and which do not have motor control relays.
- 2.07 Unsolder the brown leads from the right sending contact terminal.
- 2.08 Thread the leads from the filter unit underneath the sending cam shaft up to the sending contact terminals.
- 2.09 Connect the black and red wires from the filter unit to the left and right terminals of the sending contacts respectively as shown in Fig. 1.

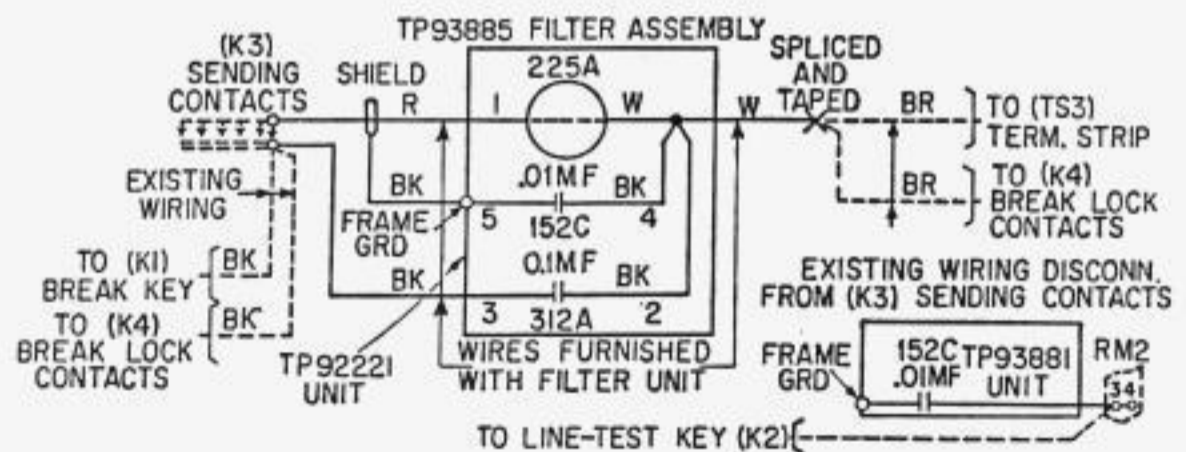


Fig. 1

- 2.10 Splice and tape the brown leads removed from the sending contacts to the white lead of the filter.

- ((
- 2.11 Check the connections of the filter with Fig. 1.
 - 2.12 Replace the tape reel.
 - 2.13 Mount the TP93881 Capacitor (.01 mf.) and bracket to the rear of the TP71670 bakelite resistance mounting blocks on the rear of the machine using the TP80845 screws furnished and discarding the TP55344 screws removed from the blocks.
 - 2.14 Connect the free lead emerging from the top of the TP81825 capacitor to terminal 34 on the resistance mounting blocks.

P31.302

Page 3
3 Pages

TP93885 FILTER ASSEMBLY