

BELL SYSTEM PRACTICES
Teletypewriter and Manual
Telegraph Station and P.B.X.
Installation and Maintenance

SECTION P30.503
Issue 2, April, 1939
AT&T Co. Standard

1. GENERAL

1.01 This section shows connection plans for the 14A reperforator unit when it is used alone and when it is used with the 14A reperforator base plate.

1.02 This section is reissued to add the notes below, to add notes on the drawings for 20 mil operation, and to reverse the polarity at terms. 24 and 25 on TP1.01.

Note 1: See "M" plans as follows:

TP1.01 M5.01

TP1.02 M2.26, M2.27, M5.01

TP1.03 M2.26, M2.27, M4.01, M4.02, M4.03, M5.01

These M plans provide the following features:

M2.26 Motor Resistance Connections for 240 OPM (14-A Reperforator)

M2.27 Motor Resistance Connections for 368 OPM (14-A Reperforator)

M4.01 Motor Resistance Connections 240 OPM. (14C & K transmitter distributors.)

M4.02 Operation of Start Magnet on A-C Power. (14A, B, C, D, H, J, K, & L transmitter distributors.)

M4.03 Motor Resistance Connections for 368 OPM 125V to 130V (14C, K, transmitter distributor.)

M5.01 Polar Operation of Line Relay, 14A Reperforator Unit (units having serial numbers other than 7314 to 7620, inclusive). M5.01 is shown temporarily as Fig. 4 in Section P35.332 but will be found later on in P30.411. For units having serial numbers between 7314 to 7620, inclusive, see Fig. 5 in Section P35.332.

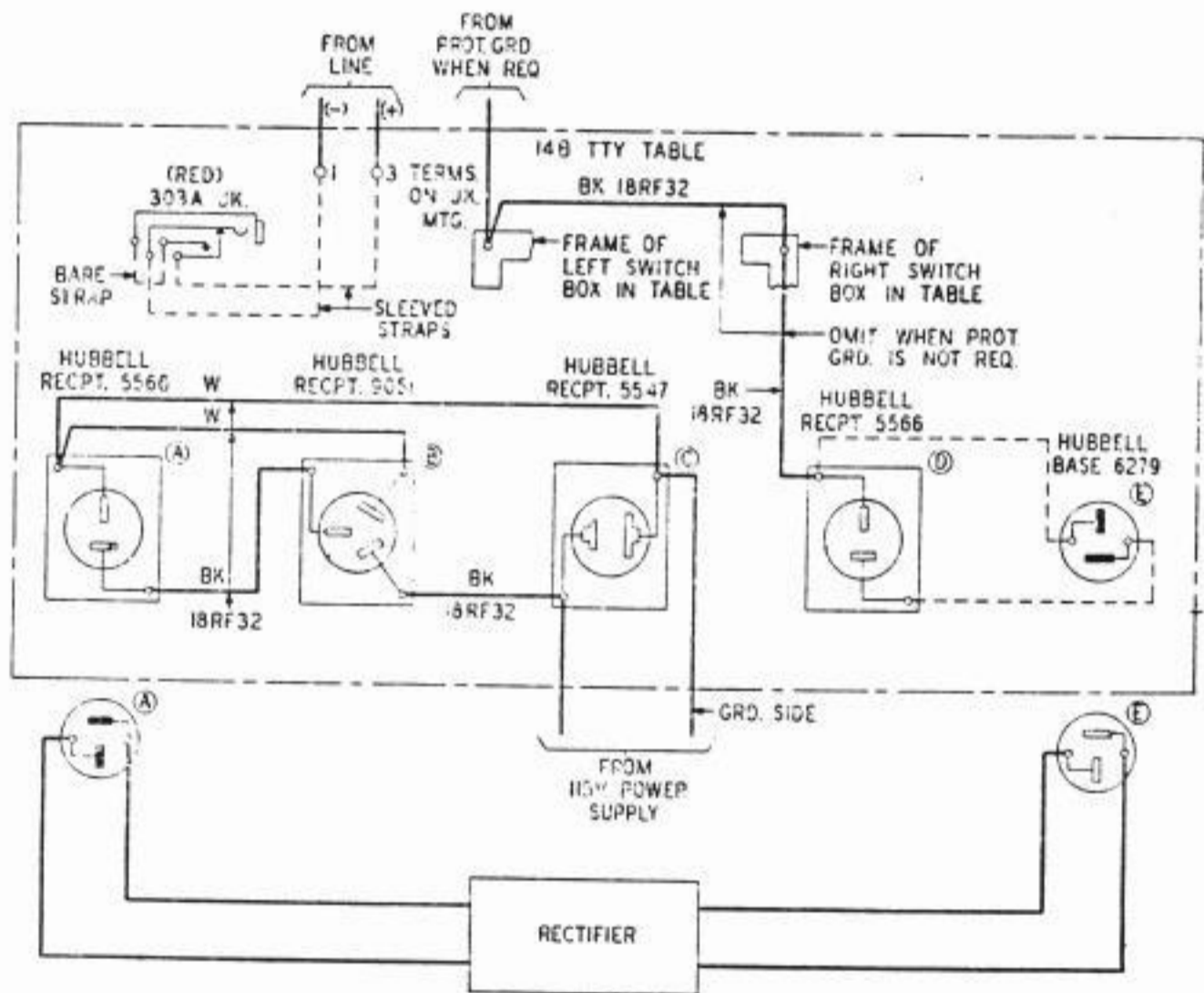
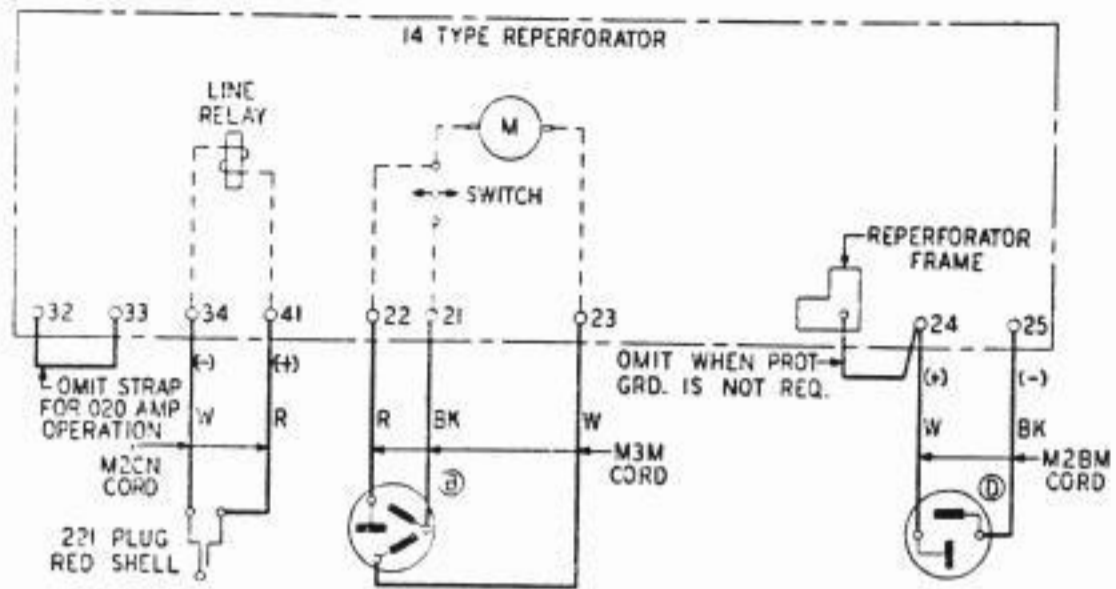
Note 2: When making connections to 14A Reperforator units with serial numbers 7314 to 7620 inclusive, omit strap shown between terminals 32 and 33 in plans

TP1.01 to TP1.03 and connect M2CN cord to reperforator unit as follows:

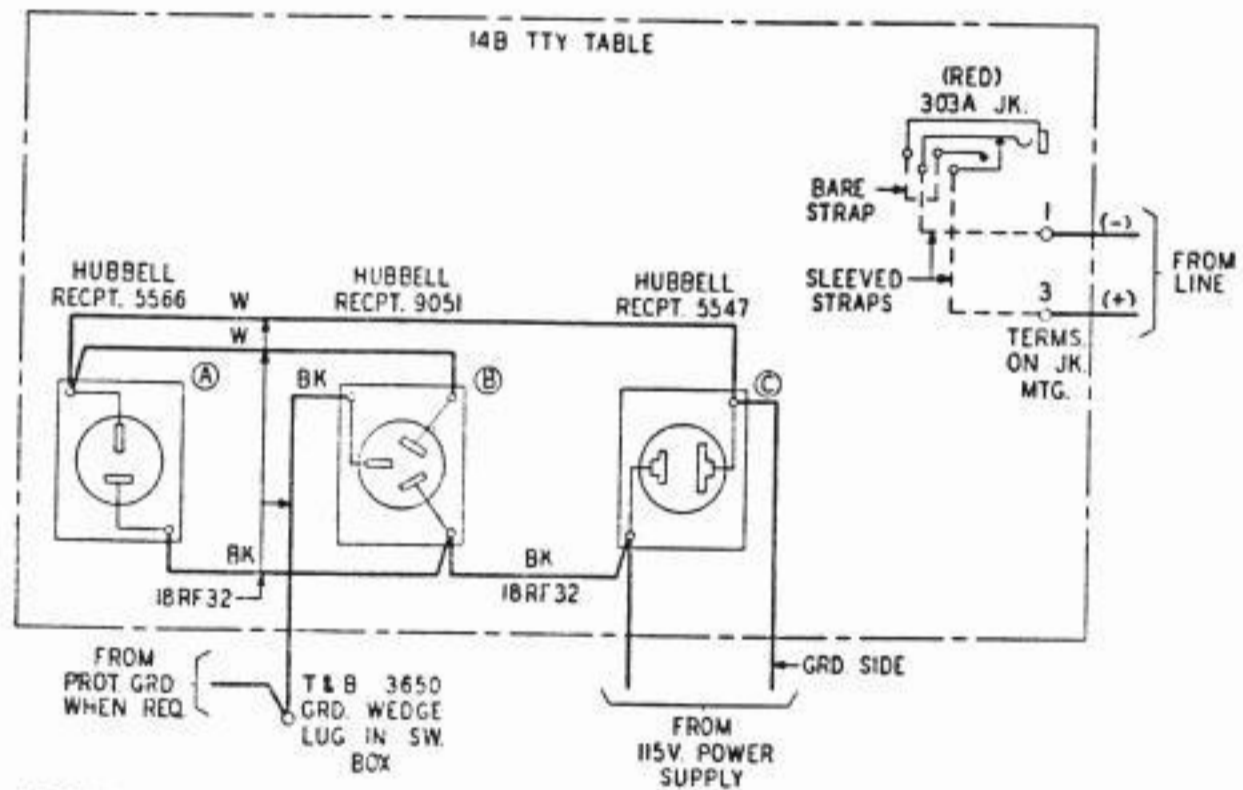
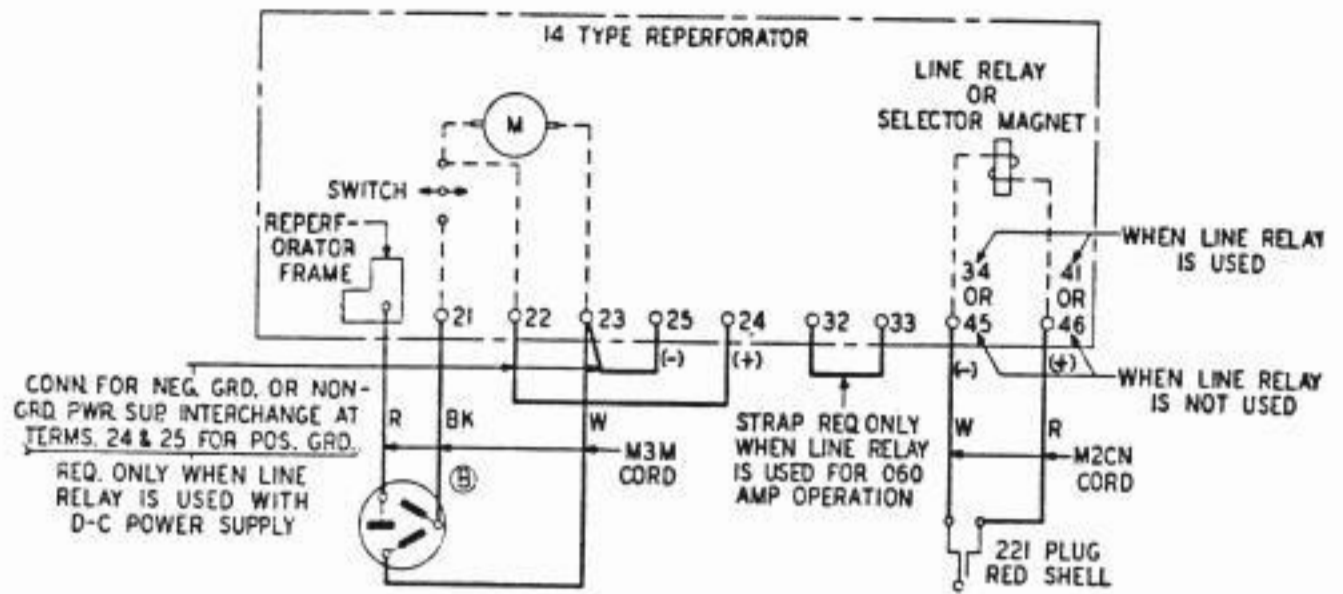
<u>M2CN Cord</u>	<u>With Line Relay</u>	<u>Without Line Relay</u>
White Cond.	Term. 32	Term. 35
Red Cond.	Term. 31	Term. 36

Note 3: 15 D, E, J or K Motor Units may be used in reperforator units having serial numbers 7314 to 7620 inclusive. If a 15J or 15K Motor Unit is employed disconnect the R5 and R6 (300-300 ohms) resistors in the reperforator as follows:

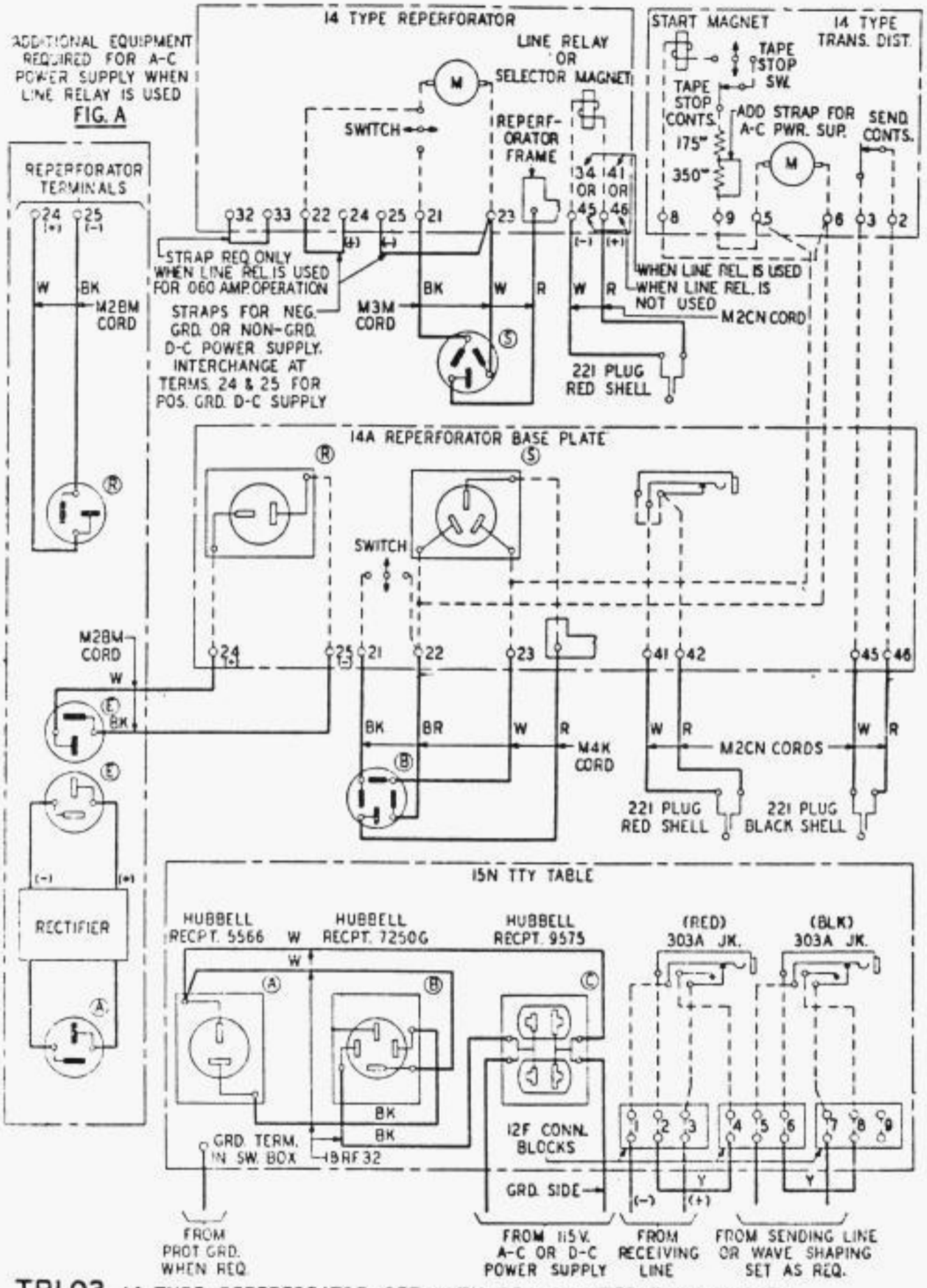
Bk wire from term. 16 to R5	}	Remove from R5, splice and tape
Bk wire from C2 to R5		
Gr wire from term. 15 to R5	}	Remove from R5, splice and tape
Gr wire from D1 to R5		
Bk wire from term. 14 to R6	—	Remove from R6 and tape



TPI.01 14 TYPE REPERFORATOR WITHOUT TRANSMITTER DISTRIBUTOR - WITH LINE RELAY AND A-C POWER SUPPLY



TPI.02 14 TYPE REPERFORATOR WITHOUT TRANSMITTER DISTRIBUTOR - A-C POWER SUPPLY (WITHOUT LINE RELAY) OR D-C POWER SUPPLY (WITH OR WITHOUT LINE RELAY)



TPI.03 14 TYPE REPERFORATOR SET WITH TRANSMITTER DISTRIBUTOR