

BELL SYSTEM PRACTICES
Teletypewriter Stations

SECTION P30.436
Issue 5, June, 1957
AT&TCo Standard

POWER CONNECTION PLANS

19A TELETYPEWRITER TABLE

1. GENERAL

1.01 This section shows power connection plans for the 19A teletypewriter table for the subscriber sets listed in 1.04. Also it makes reference to other appropriate Bell System Practices containing power wiring for subscriber sets listed in 1.03.

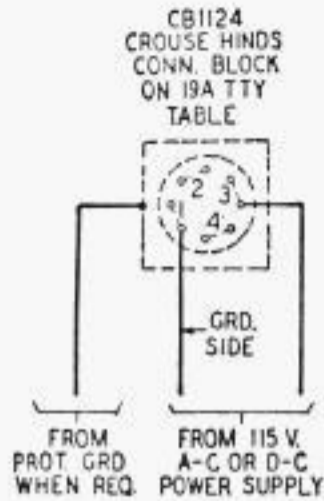
1.02 This section is reissued to bring plans P6.07 and P6.08 up to date.

1.03 Power wiring for the 19A table when 128B2, 128C3 and 130B1 subscriber sets are used is found in the following P90 Sections which show complete wiring for the station.

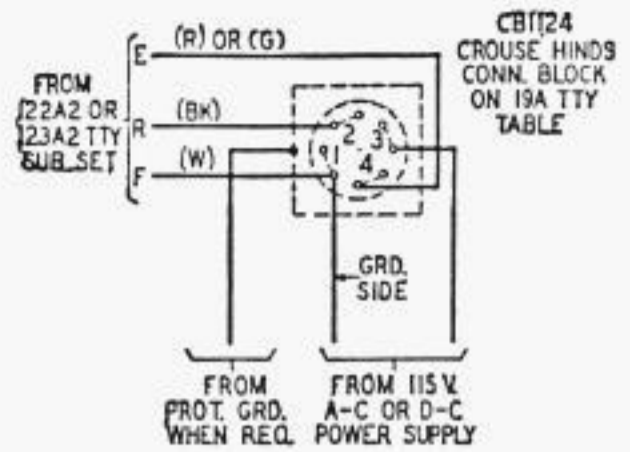
P90.711	128B2	Single Loop Operation Emergency Teletypewriter Optional
P90.713	128C3	Attended TWX Service
P90.714	128C3	Unattended TWX Service
P90.715	130B1	Attended TWX Service
P90.716	130B1	Unattended TWX Service
P90.717	130B1	Private Line Service

1.04 The power connection plans covered in this section are as follows:

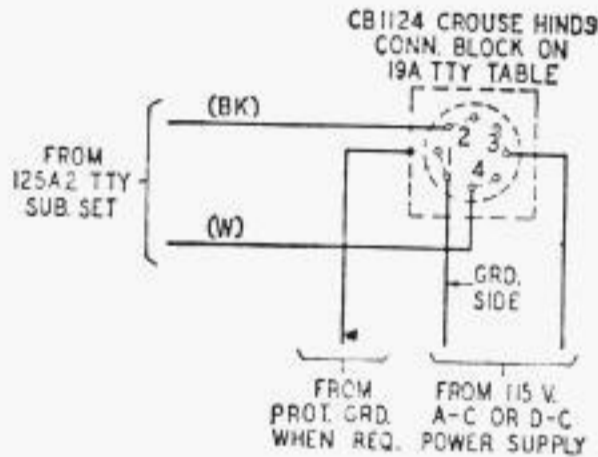
<u>Plan Number</u>	<u>Title</u>
P6.01	Without TTY Sub. Set
P6.02	122A2 or 123A2 Sub. Set
P6.03	125A2 Sub. Set
P6.04	126A1 or 126B1 Sub. Set
P6.05A	120B1 Sub. Set—115V. AC.
P6.05B	120B1 Sub. Set—Pos. Grd. 115V. DC.
P6.05C	120B1 Sub. Set—Neg. Grd. or Non-Grd. 115V. DC.
P6.06	120C1, 120C2, or 120D1 Set
P6.07	126A2 Sub. Set
P6.08	128C1 or 128C2 Set—Attended TLX Service
P6.09	128C1 or 128C2 Set—Unattended TLX Service
P6.10	126A2 Set with External Line Test



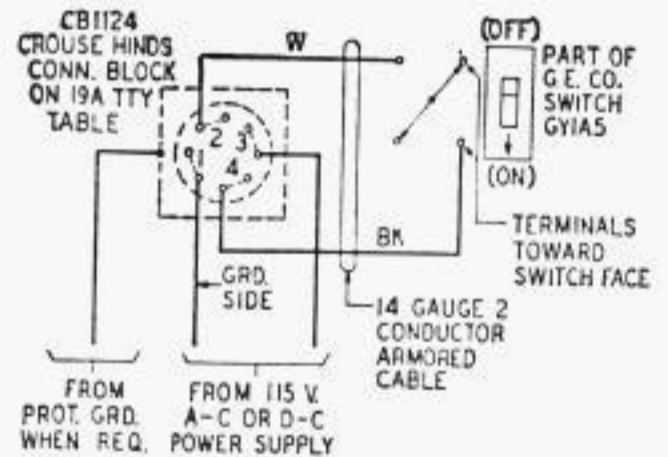
P6.01—19A Table — without TTY Sub. Set



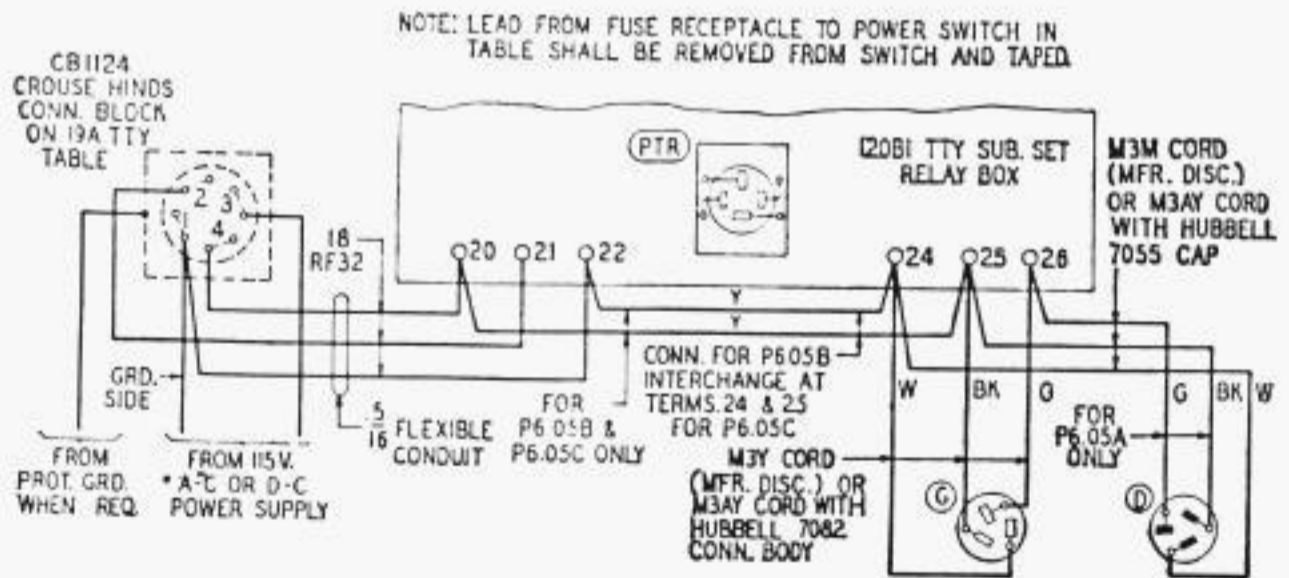
P6.02—19A Table — 122A2 or 123A2 Set.



P6.03—19A Table—125A2 Set.



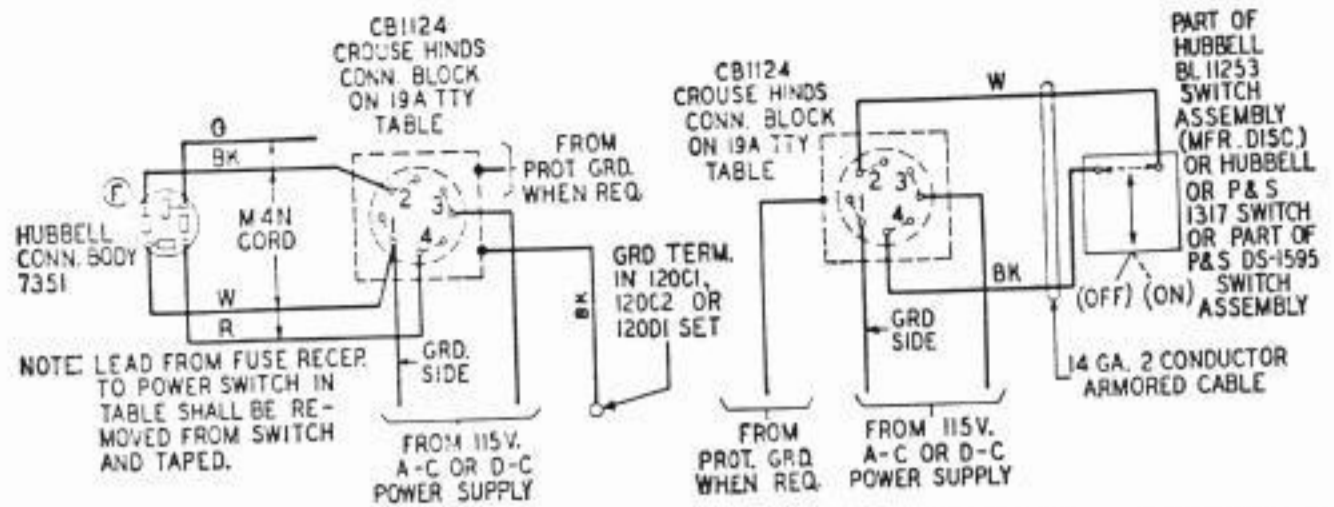
P6.04—19A Table—126A1 or 126B1 Set.



P6.05A—19A Table—120B1 Set—115 V. AC.

P6.05B—19A Table—120B1 Set—Pos. Grd. 115 V. DC.

P6.05C—19A Table—120B1 Set—Neg. Grd. or Non-Grd. 115 V. DC.



P6.06—19A Table — 120C1, 120C2 or 120D1 Set.

P6.07—19A Table — 126A2 Set.

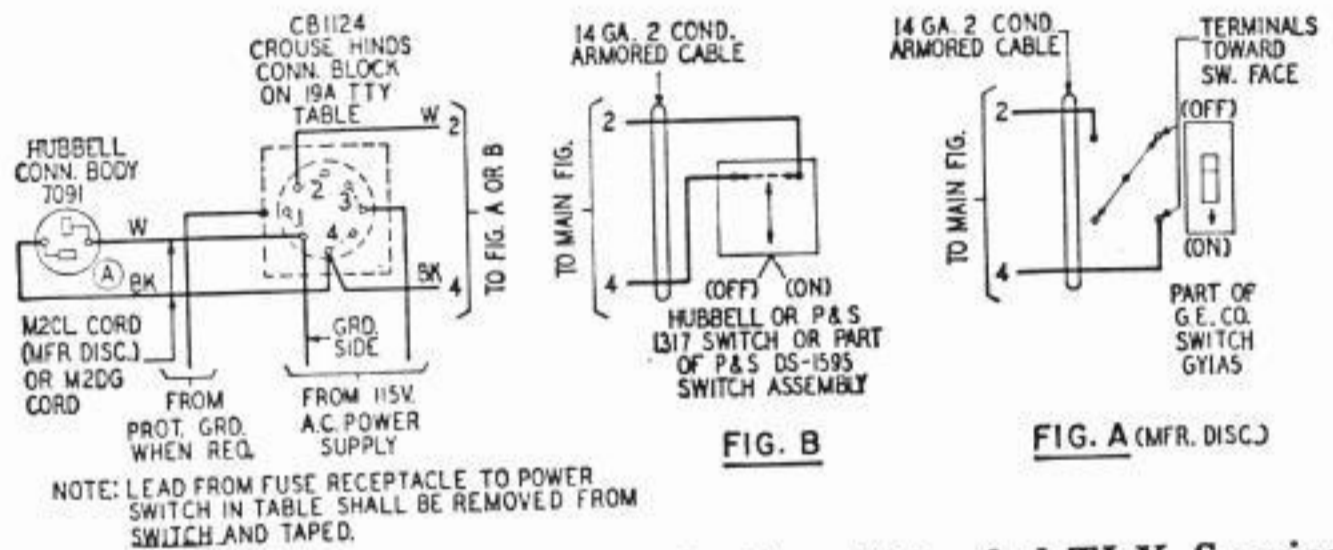
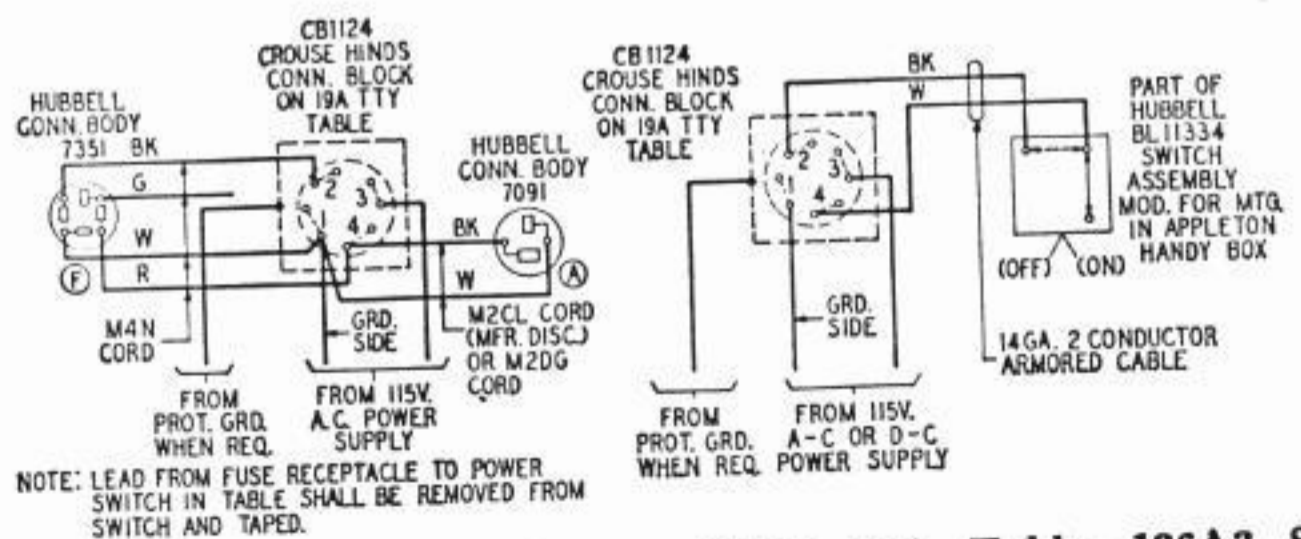


FIG. B

FIG. A (MFR. DISC.)

P6.08—19A Table—128C1 or 128C2 Set—Attended TLX Service.



P6.09—19A Table — 128C1 or 128C2 Set — Unattended TLX Service.

P6.10—19A Table—126A2 Set with External Line Test.

P30.436

Page 3
3 Pages

POWER CONNECTION PLANS
19A TTY TABLE