

BELL SYSTEM PRACTICES
Teletypewriter Stations

SECTION P30.435
Issue 6, June, 1957
AT&TCo Standard

POWER CONNECTION PLANS

15N TELETYPEWRITER TABLE

1. GENERAL

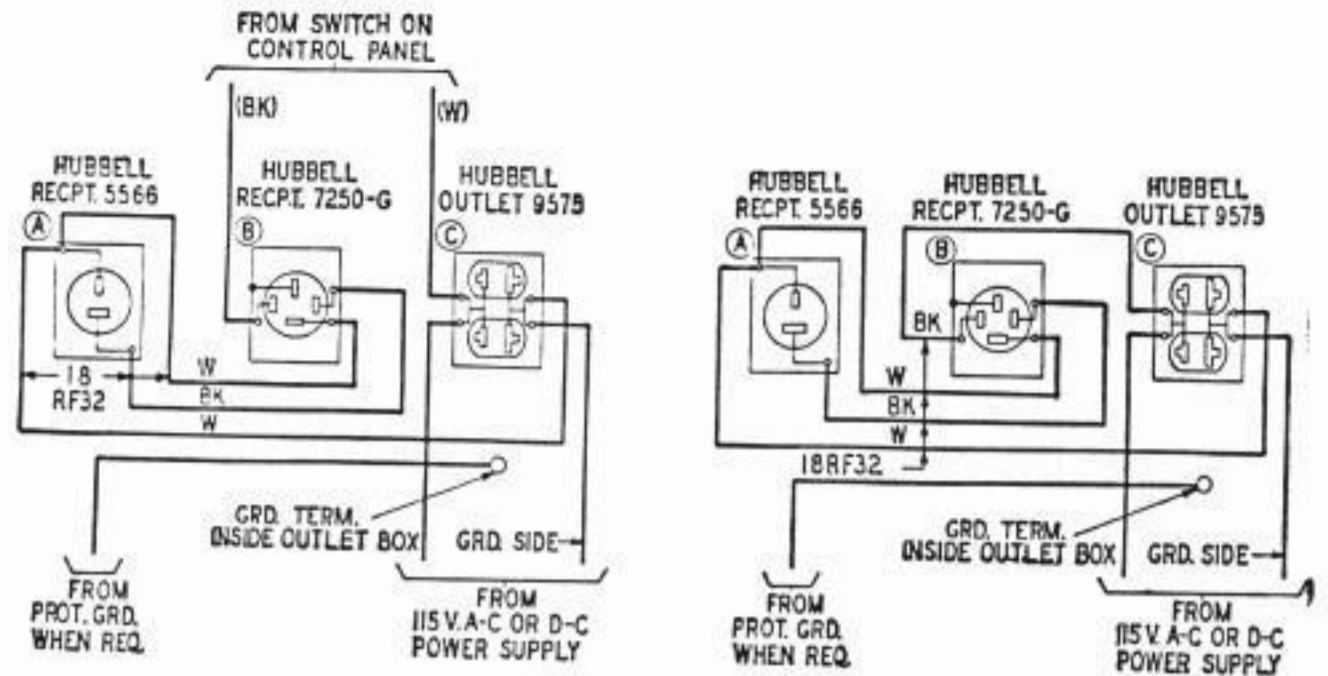
1.01 This section contains power connection plans for the 15N teletypewriter table or makes reference to appropriate "P" sections containing proper wiring information.

1.02 This section is reissued to bring plan P5.13 up to date and to make reference to the appropriate "P" sections for the power wiring when 128B2, 128C3, 130B1 or 130B2 subscriber sets are used.

1.03 Power wiring for the 15N table when 128B2, 128C3, 130B1 and 130B2 subscriber sets are used is found in the following P90 Sections which show complete wiring for the station.

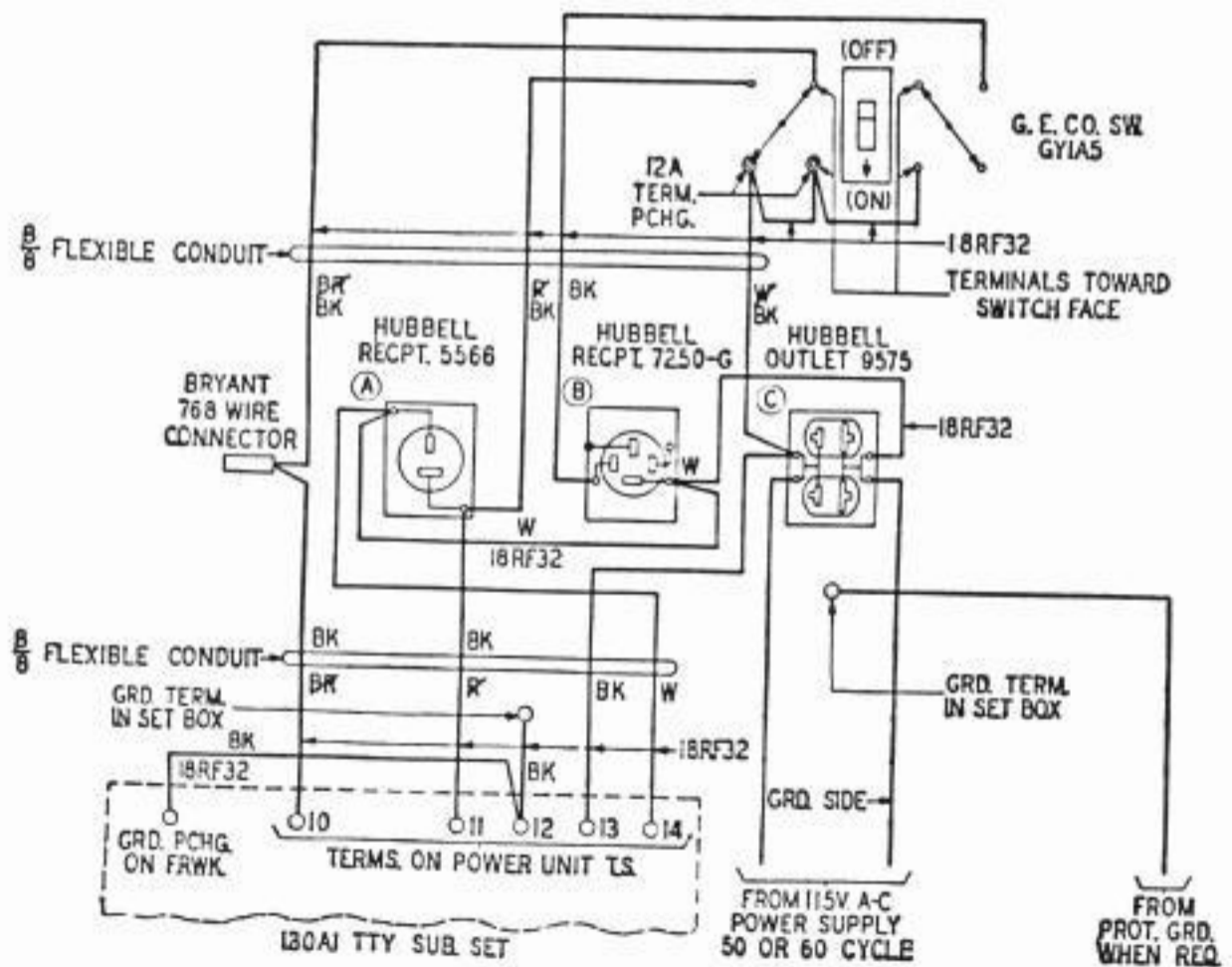
P90.511	128B2	Two Loop Operation—Magnet Receiving
P90.512	128B2	Single Loop Operation with Emergency Teletypewriter
P90.515	128C3	Attended TWX Service
P90.516	128C3	Unattended TWX Service
P90.517	130B1	Attended TWX Service
P90.518	130B1	Unattended TWX Service
P90.519	130B1	Private Line Service
P90.520	130B2	Private Line Service
P90.521	130B2	Attended TWX Service
P90.522	130B2	Unattended TWX Service

<u>Plan Number</u>	<u>Title</u>
1.04	The power connection plans covered in this section are as follows:
P5.01	With 15B, 15C, 15D, 15F, or 15G Control Panel
P5.02	Without Control Panel or TTY Subscriber Set— Rect. or Mot. Gen. (When used) Switched with TTY
P5.03	130A1 Set—115 V. AC.
P5.04	128A1 Set—Two Rectifiers—115 V. AC.
P5.05	128A1 Set—Motor Generator—115 V. AC.
P5.06	120A1 Set—115 V. AC.
P5.07A	120A1 Set—Pos. Grd. 115 V. DC.
P5.07B	120A1 Set—Neg. Grd. or Non-Grd. 115 V. DC.
P5.08	122A2 or 123A2 Set.
P5.09	Remote Control of TTY Motor—Rectifier or Motor Gen. (When used) Operating Continuously.
P5.10	120C1, 120C2 or 120D1 Set.
P.511	Neg. Grded. or Pos. Grded. 220 V. DC Power Supply.
P5.12	Non-Grded. or Mid-Point Grded. 220 V. DC.
P5.13	Remote Control of TTY Motor—Rectifier or Motor Gen. (When used) Operating Continuously—Fustat or Fusetron in Table.

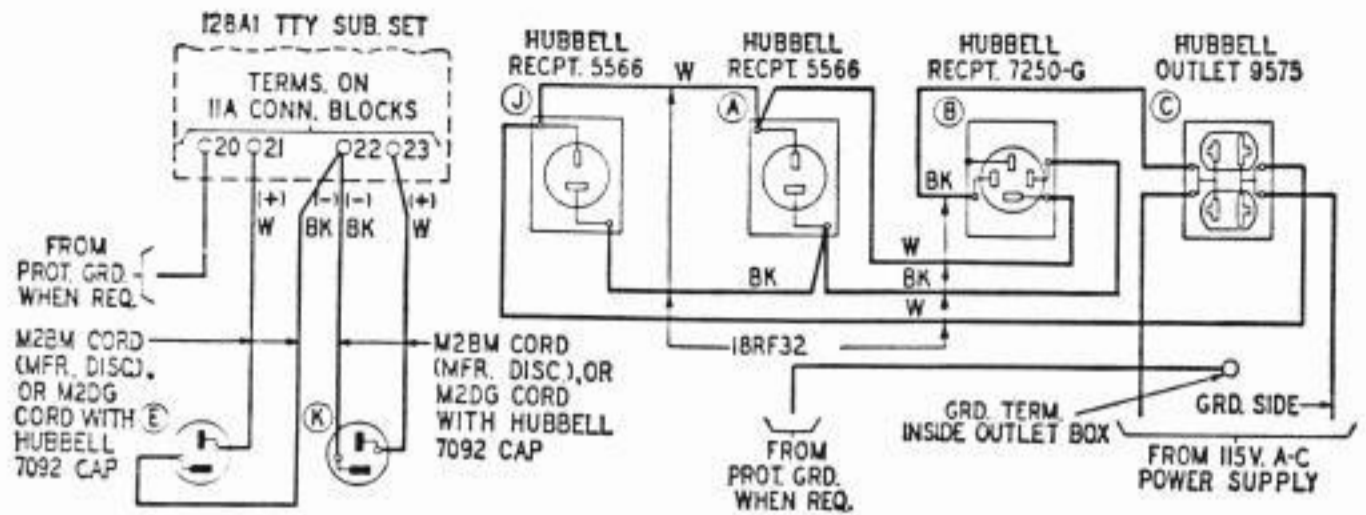


P5.01—15N Table — with 15B, 15C, 15D, 15F or 15G Control Panel.

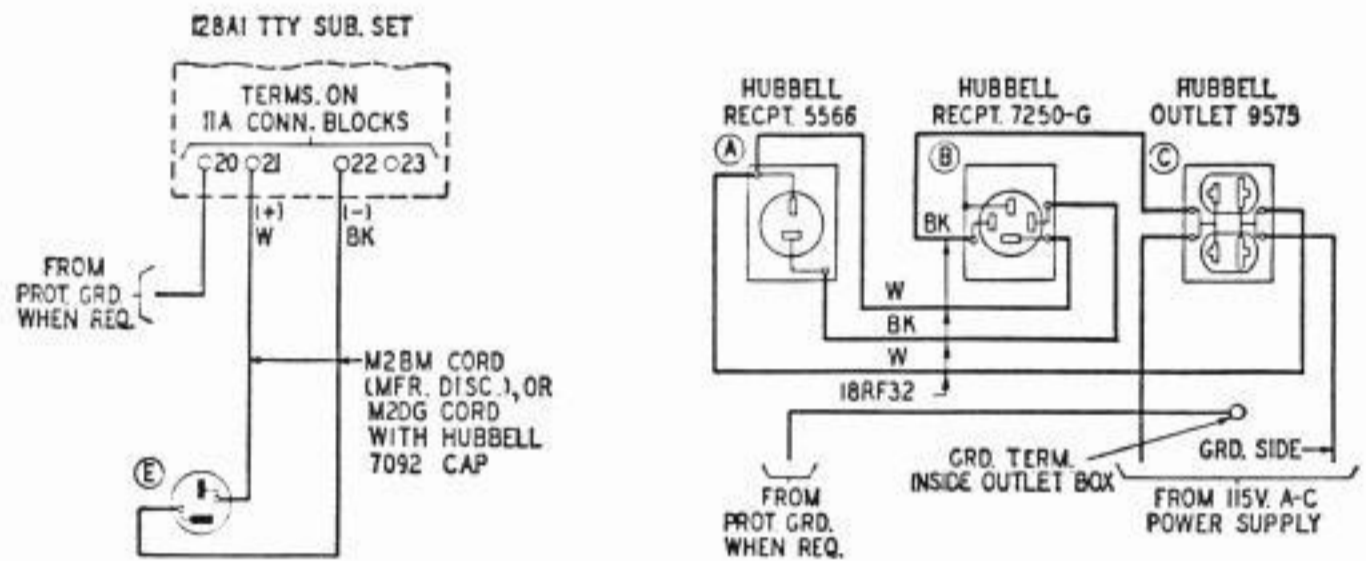
P5.02—15N Table — without Control Panel or TTY Subscriber Set—Rect. or Mot. Gen. (When used) Switched with TTY.



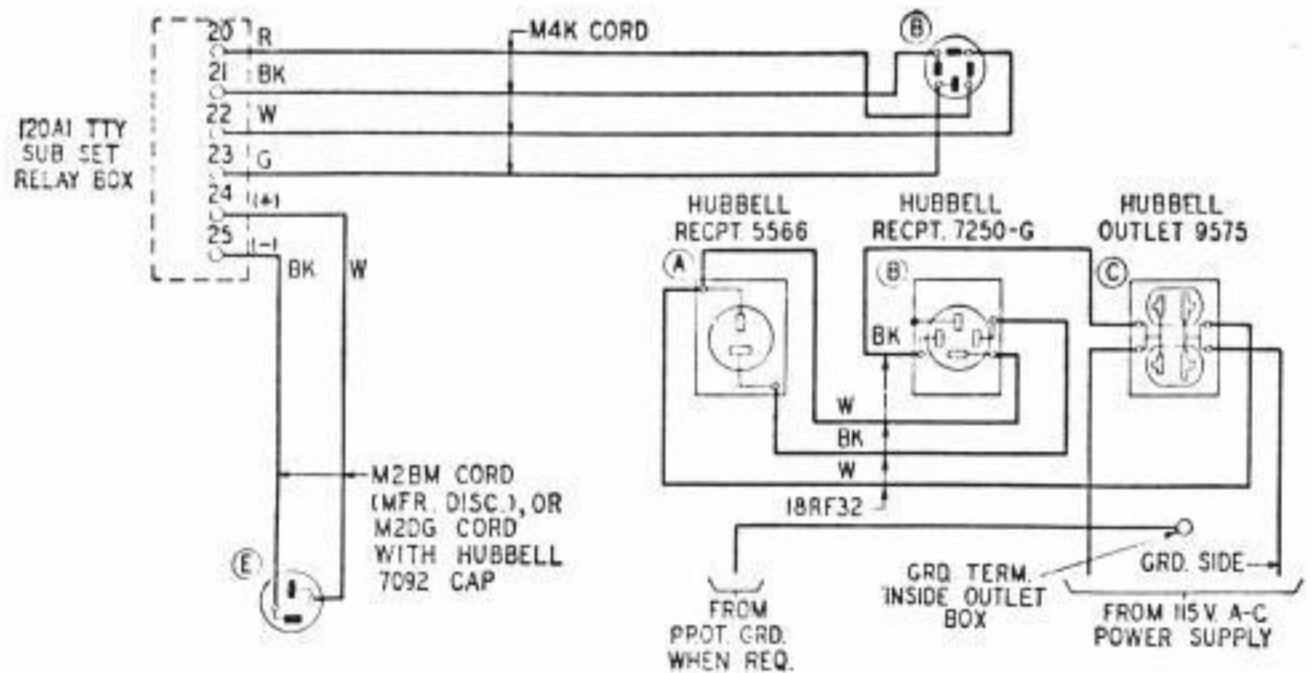
P5.03—15N Table—130A1 Set—115 V. AC.



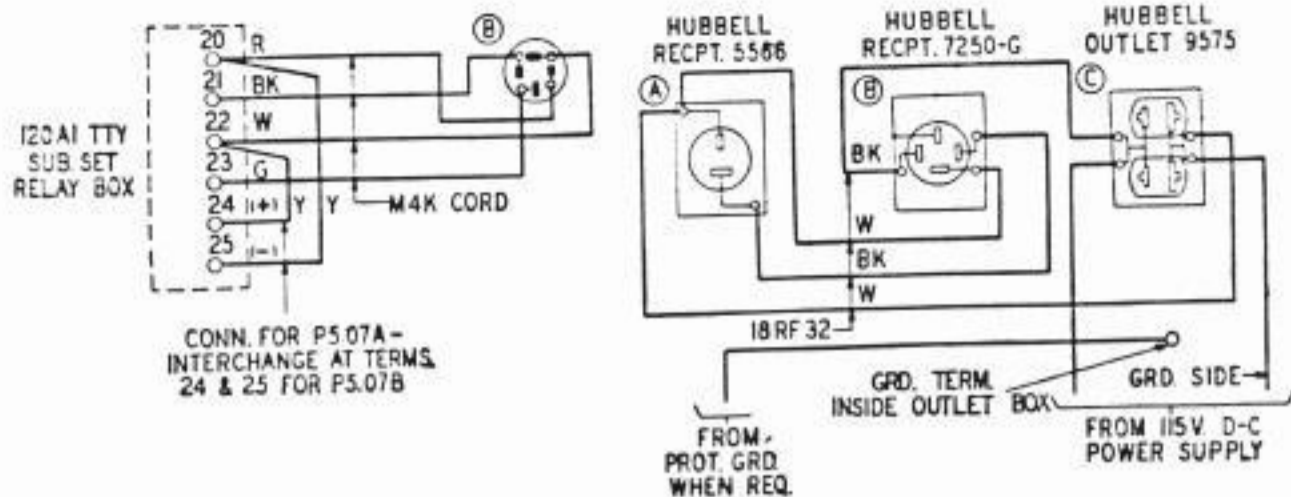
P5.04—15N Table—128A1 Set—Two Rectifiers—115 V. AC.



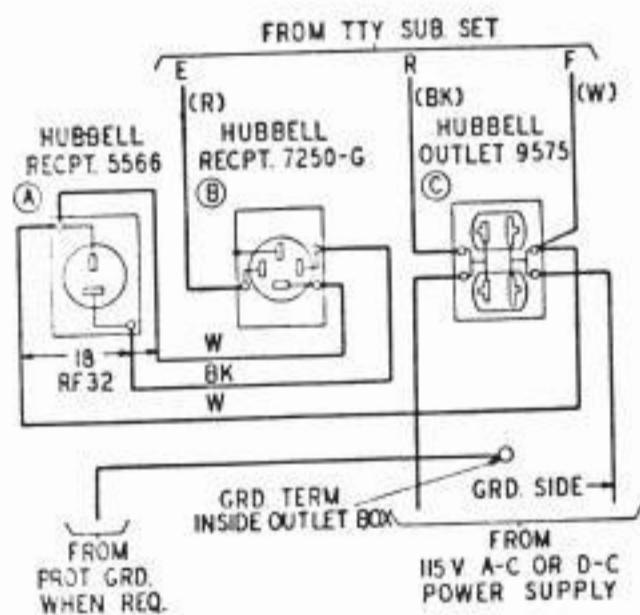
P5.05—15N Table—128A1 Set—Motor Generator—115 V. AC.



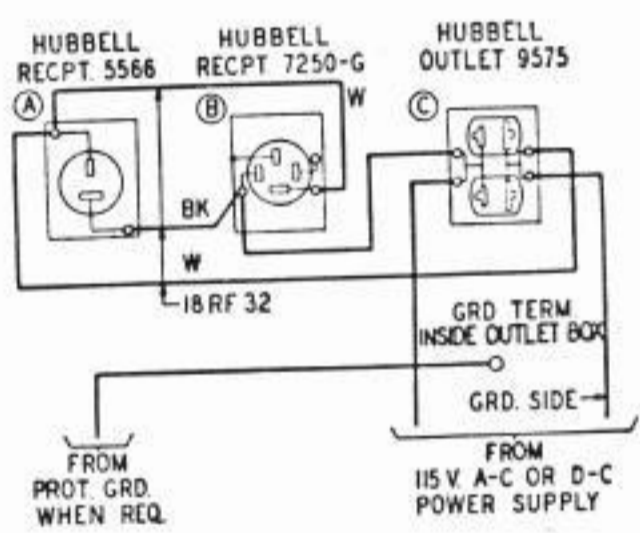
P5.06—15N Table—120A1 Set—115 V. AC.



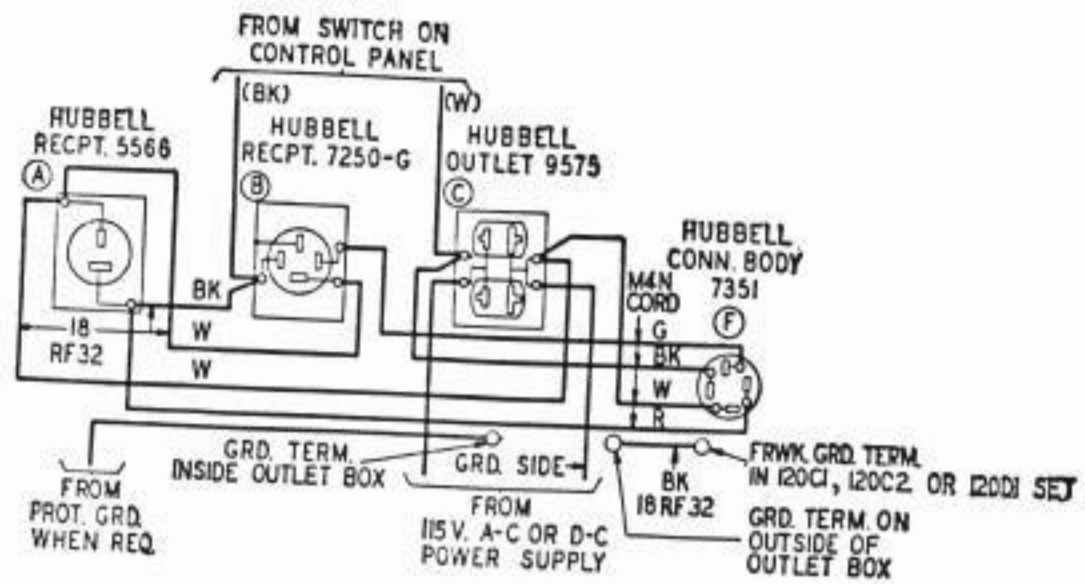
P5.07A—15N Table—120A1 Set—Pos. Grd. 115 V. DC.
P5.07B—15N Table—120A1 Set—Neg. Grd. or Non-Grd. 115 V. DC.



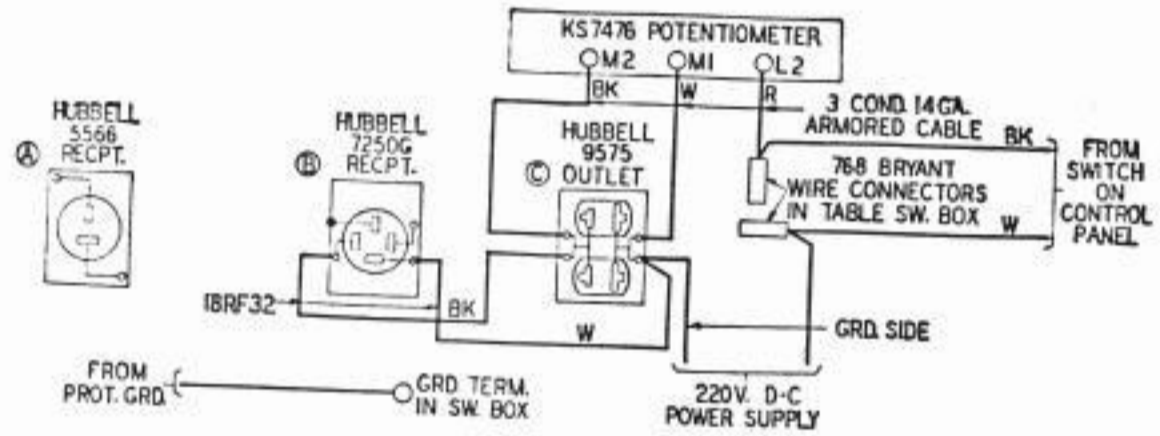
P5.08—15N Table—122A2 or 123A2 Set.



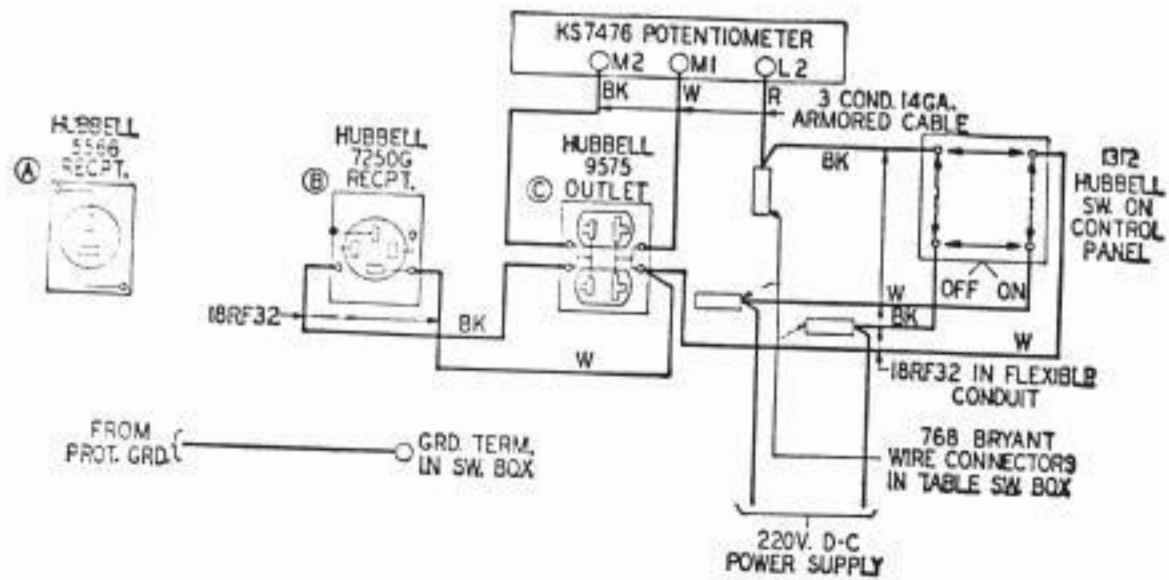
P5.09—15N Table — Remote Control of TTY Motor — Rect. or Motor Gen. (When used) Operating Continuously.



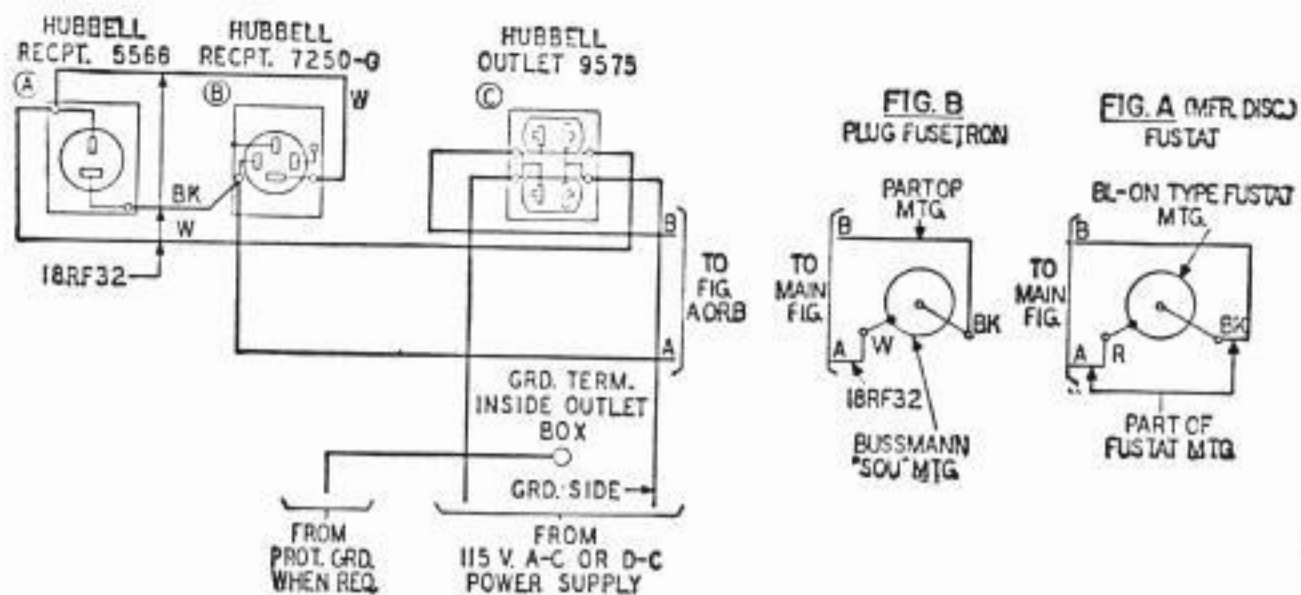
P5.10—15N Table—120C1, 120C2 or 120D1 Set.



P5.11—15N Table—Neg. Grded. or Pos. Grded. 220 V. DC. Power Supply.



P5.12—15N Table—Non-Grded. or Mid-Point Grded. 220 V. DC.



P5.13—15N Table—Remote Control of TTY Motor—Rect. or Motor Gen. (When used) Operating Continuously—Fustat or Fusetron in Table.

Notes:

1. For P5.12 change the front switch unit in the panel to a 1312 Hubbell switch as shown.
2. A soldering iron may be used with P5.11 or P5.12 but when the iron is plugged in, the TTY plug must be removed so that the machine and the iron will not be drawing current at the same time.