

BELL SYSTEM PRACTICES
Teletypewriter Stations

SECTION P30.431
Issue 3, June, 1957
AT&TCo Standard

POWER CONNECTION PLANS

14B TELETYPEWRITER TABLE

1. GENERAL

1.01 This section shows power connection plans for the 14B teletypewriter table for the subscriber sets listed in 1.04. Also it makes reference to other appropriate Bell System Practices containing power wiring for subscriber sets listed in 1.03.

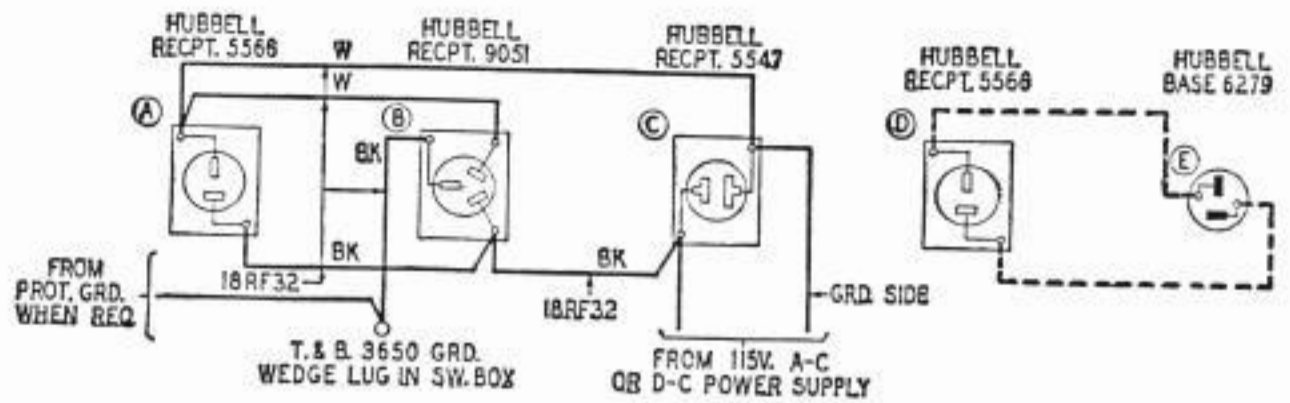
1.02 This section is reissued to add plans P1.13, P1.14 and to bring other plans up to date.

1.03 Power wiring for the 14B table when 128B2 and 130B1 subscriber sets are used is shown in the following P90 Sections which show complete wiring for the station.

P90.311	128B2	Private Line Service — Single Loop Operation with Emergency TTY — 115V AC
P90.312	128B2	Private Line Service—Two Loop Operation — Magnet Receiving without Emergency TTY
P90.313	130B1	Private Line Service

1.04 The power connection plans covered in this section are as follows:

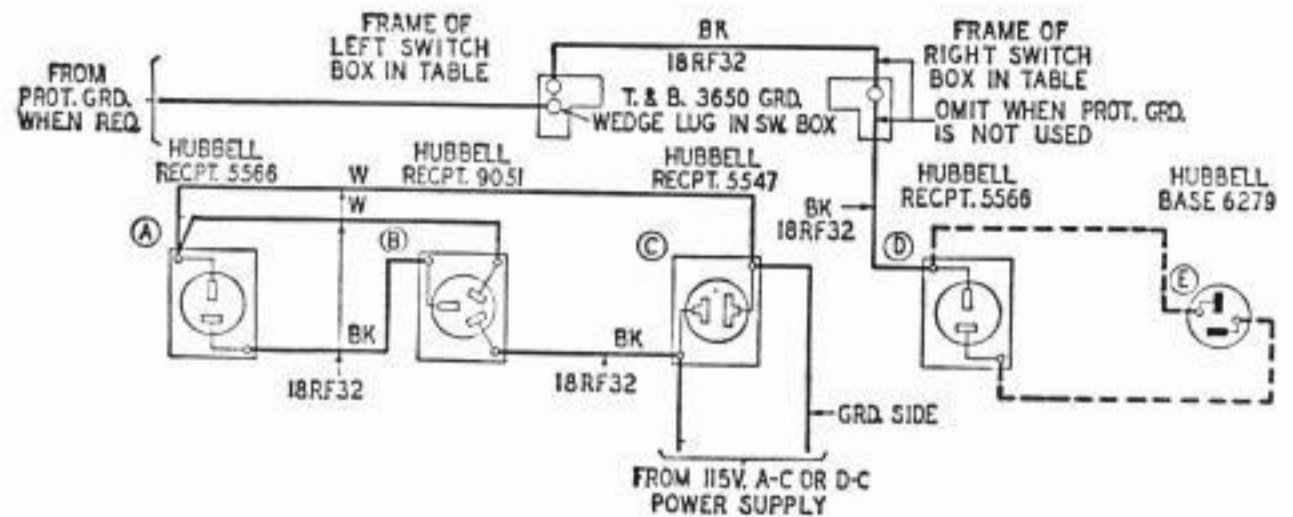
<u>Plan Number</u>	<u>Title</u>
P1.01	Remote Control or TTY Switch Control of TTY Motor (A) 124A1 or 124B1 Set (B) TWP Service—Mot. Gen. Operating Continuously—or 115V. DC
P1.02	Without TTY Sub. Set—Remote Control or TTY Switch Control of TTY Motor & Rect. or Mot. Gen.—115V. DC (When Pot. Grd. Is Not Used)—or 115V. AC
P1.03	122A2 or 123A2 Set
P1.04	125A2 Set
P1.05	126A1 or 126B1 Set
P1.06	128A1 Set—115V. AC
P1.07	130A1 Set—115V. AC (60-Cycle)
P1.08	Without TTY Sub. Set—Remote Control or TTY Switch Control of TTY Motor & Rect. or Mot. Gen.—Power Supplied to Line—with Pot. Grd. (See P1.02 When Pot. Grd. Is Not Used)—115V. AC
P1.10	120A1 Set—115V. AC
P1.11A	120A1 Set—Pos. Grd. 115V. DC
P1.11B	120A1 Set—Neg. Grd. or Non-Grd.—115V. DC
P1.12	126A2 Set
P1.13	Neg. Grd. or Pos. Grd.—220V. DC ←
P1.14	Non-Grd. or Midpoint Grd.—220V. DC ←



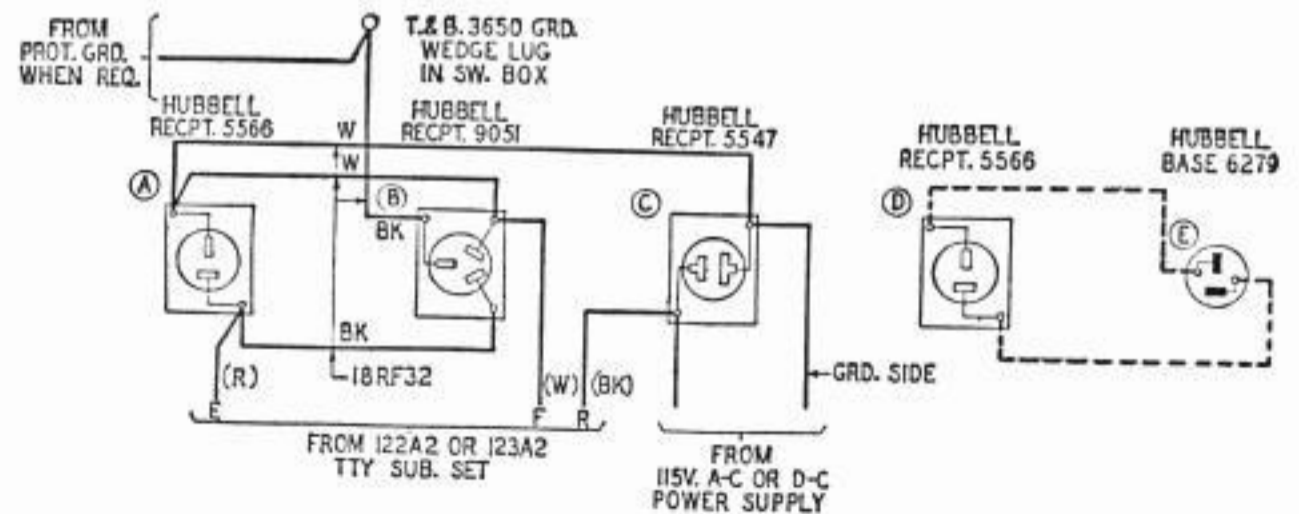
P1.01—14B Table—Remote Control or TTY Switch Control of TTY Motor

(A) 124A1 or 124B1 Set.

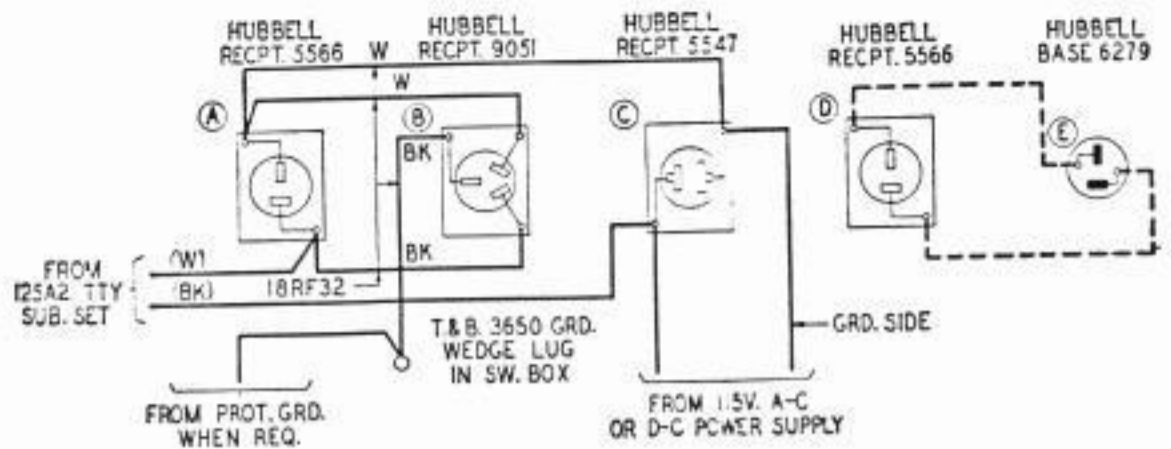
(B) TWP Service—Mot. Gen. Operating Continuously or 115V. DC.



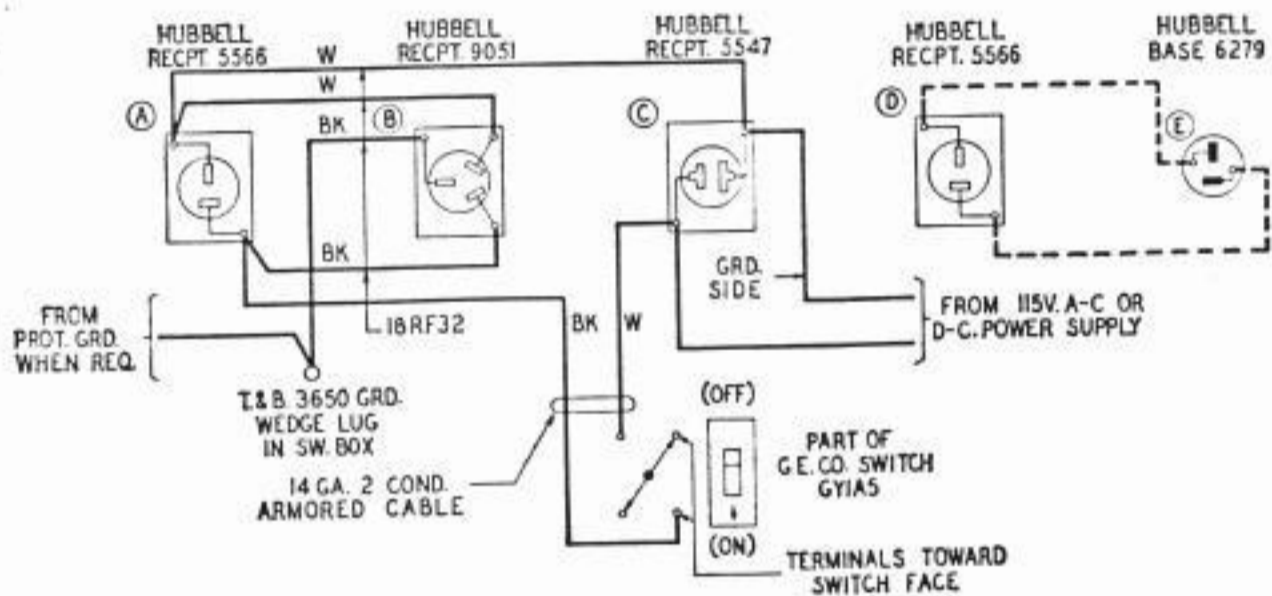
P1.02—14B Table—Without TTY Sub. Set—Remote Control or TTY Switch Control of TTY Motor & Rect. or Mot. Gen.—115V. DC (When Pot. Grd. Is Not Used) or 115V. AC.



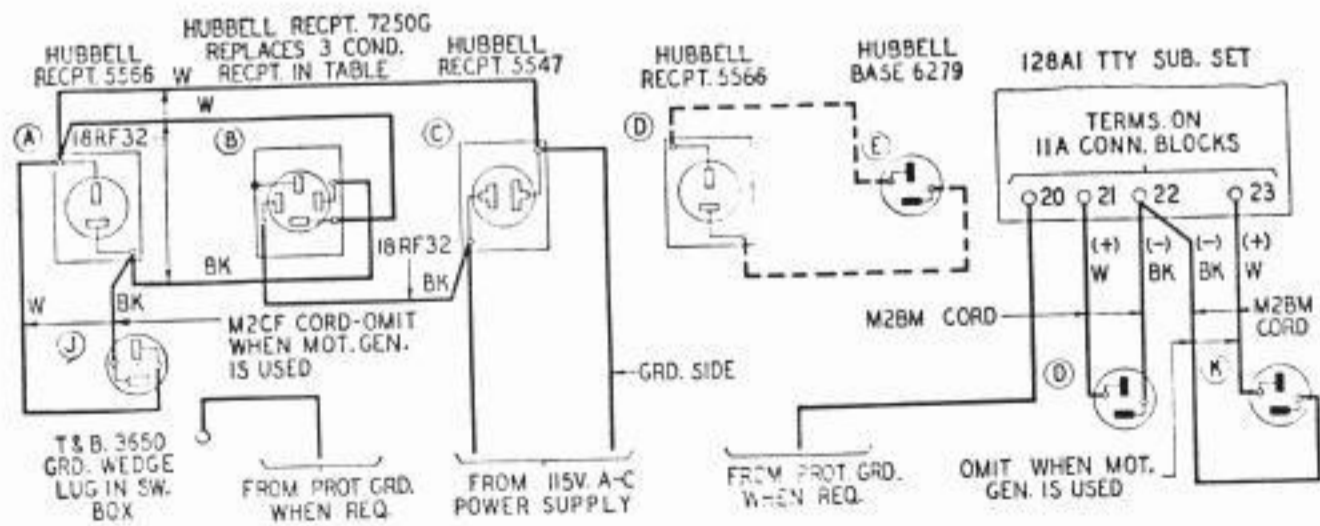
P1.03—14B Table—122A2 or 123A2 Set.



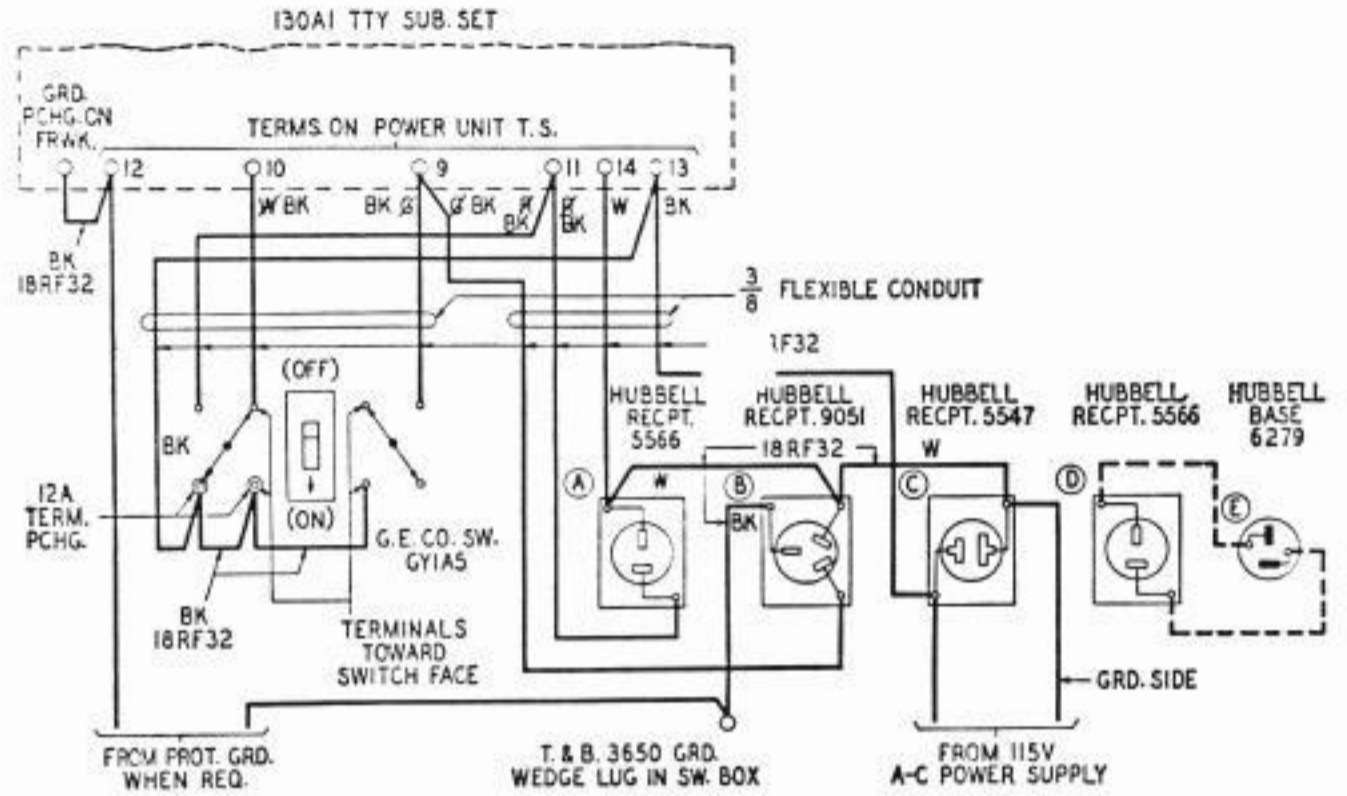
P1.04—14B Table—125A2 Set.



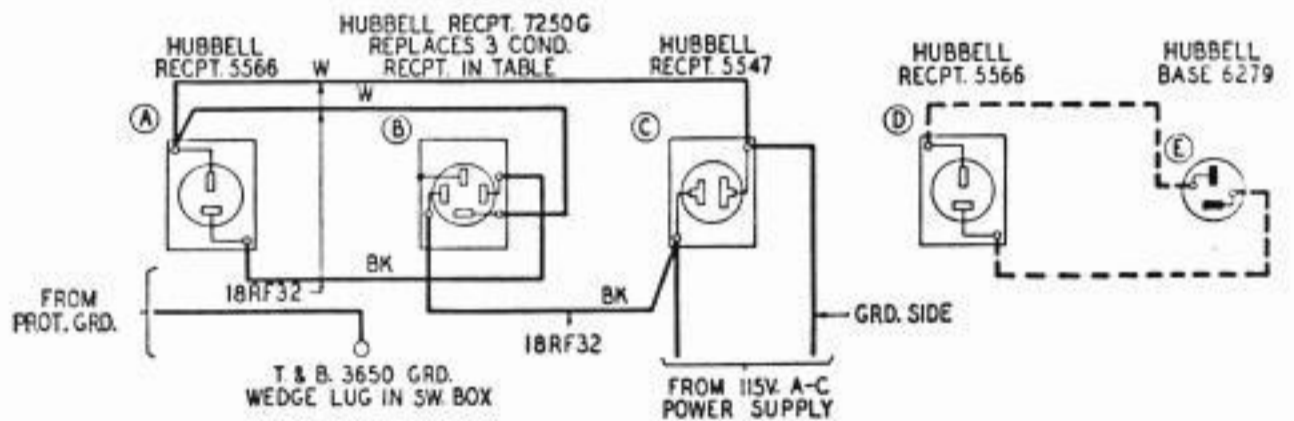
P1.05—14B Table—126A1 or 126B1 Set.



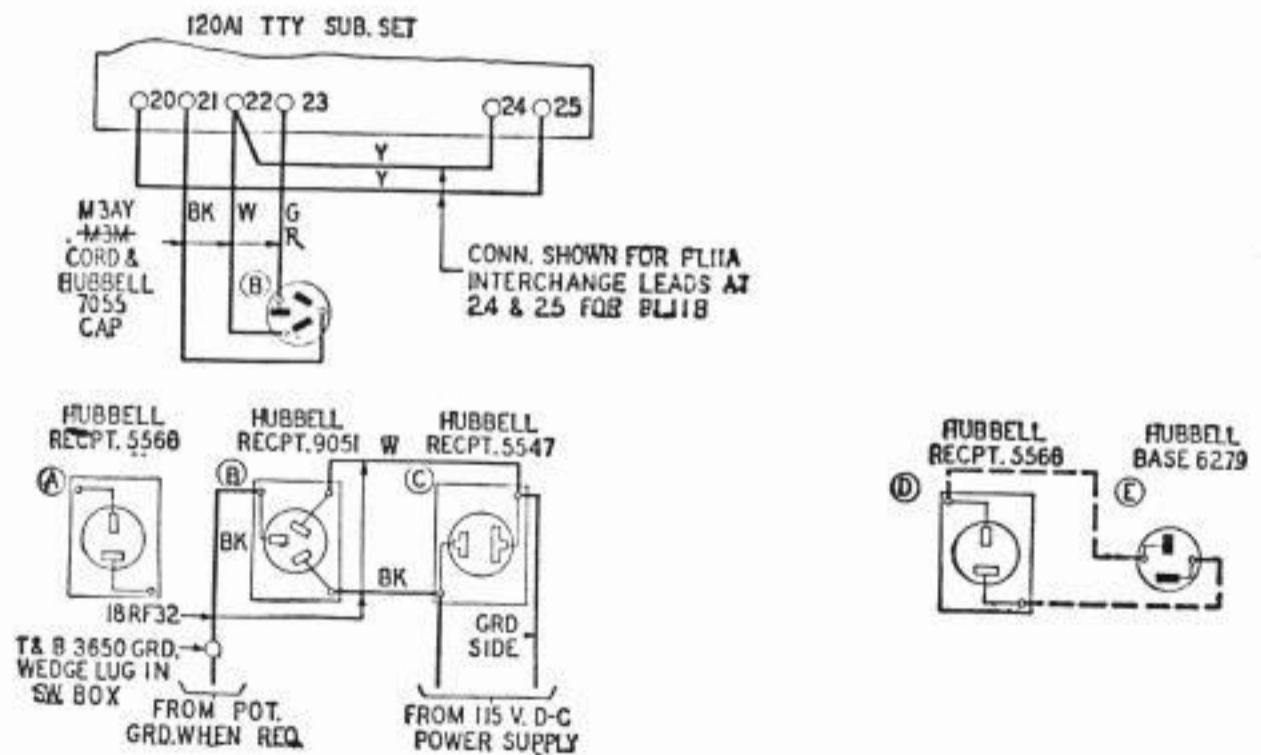
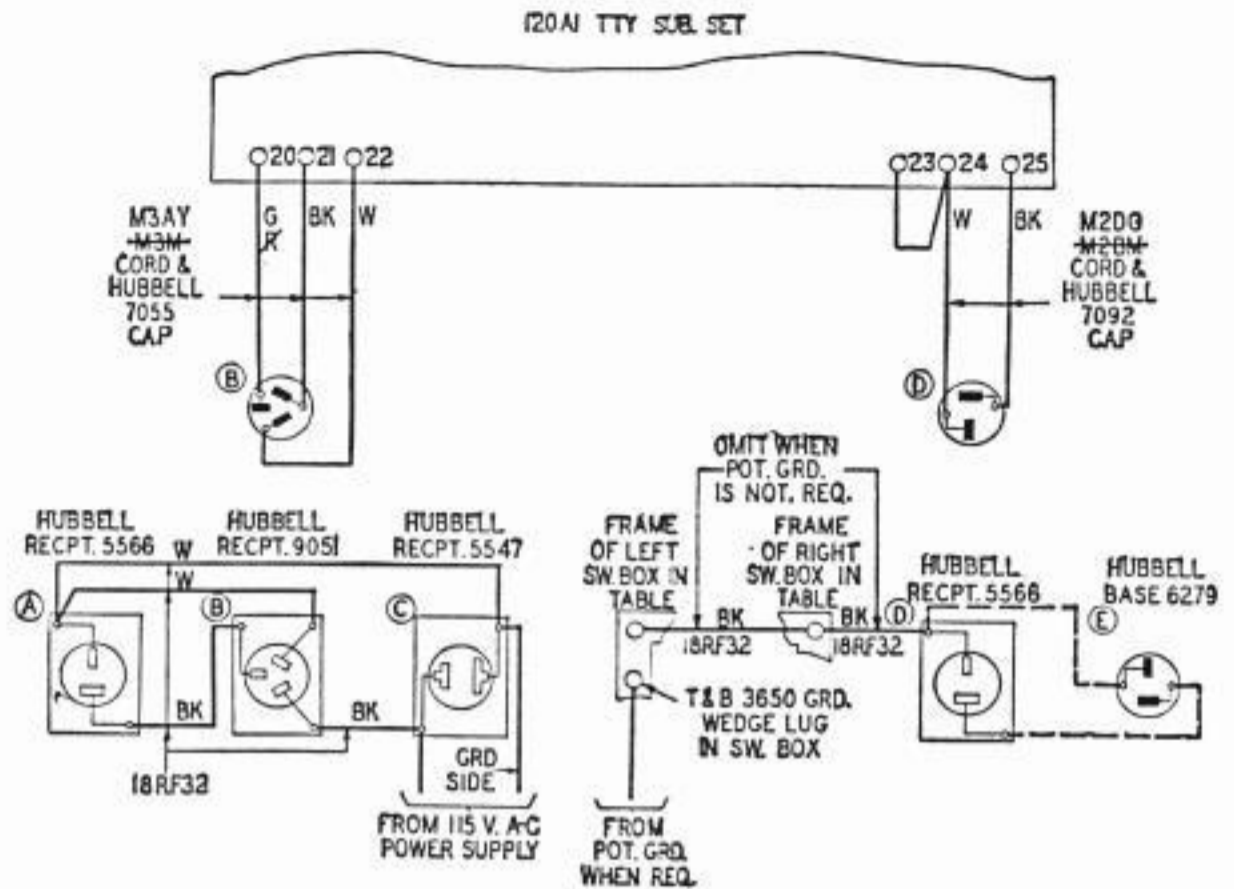
P1.06—14B Table—128A1 Set—115V. AC.

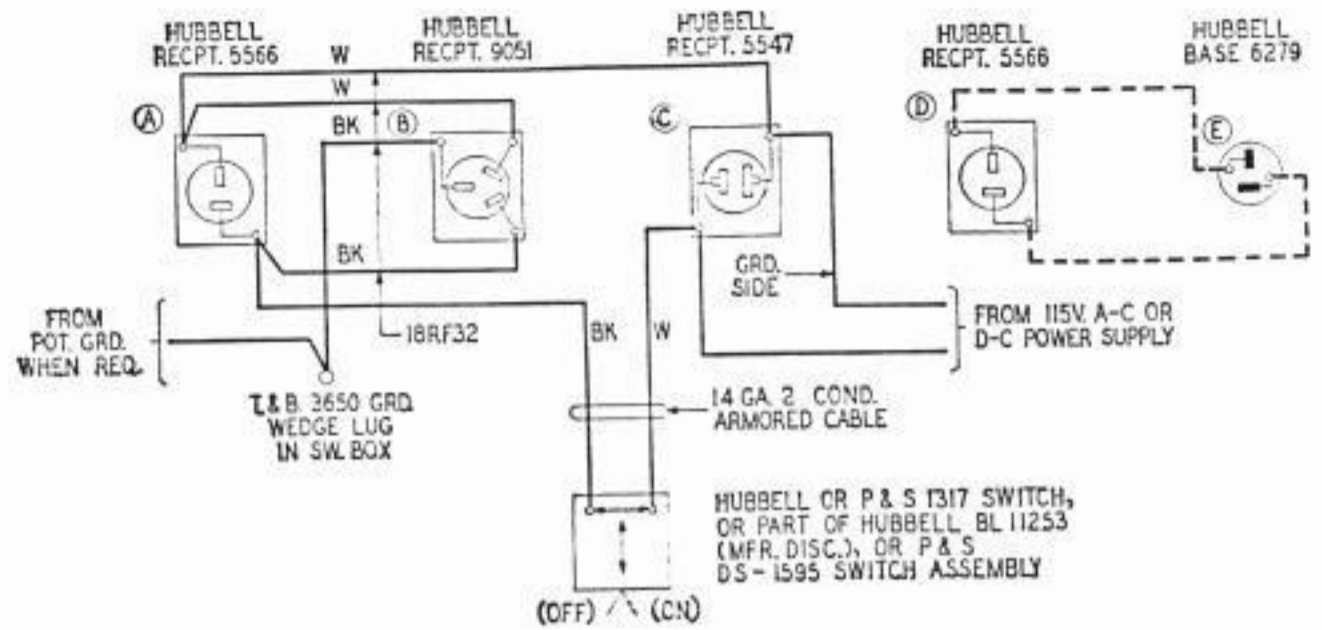


P1.07—14B Table—130A1 Set—115V. AC (60-Cycle).

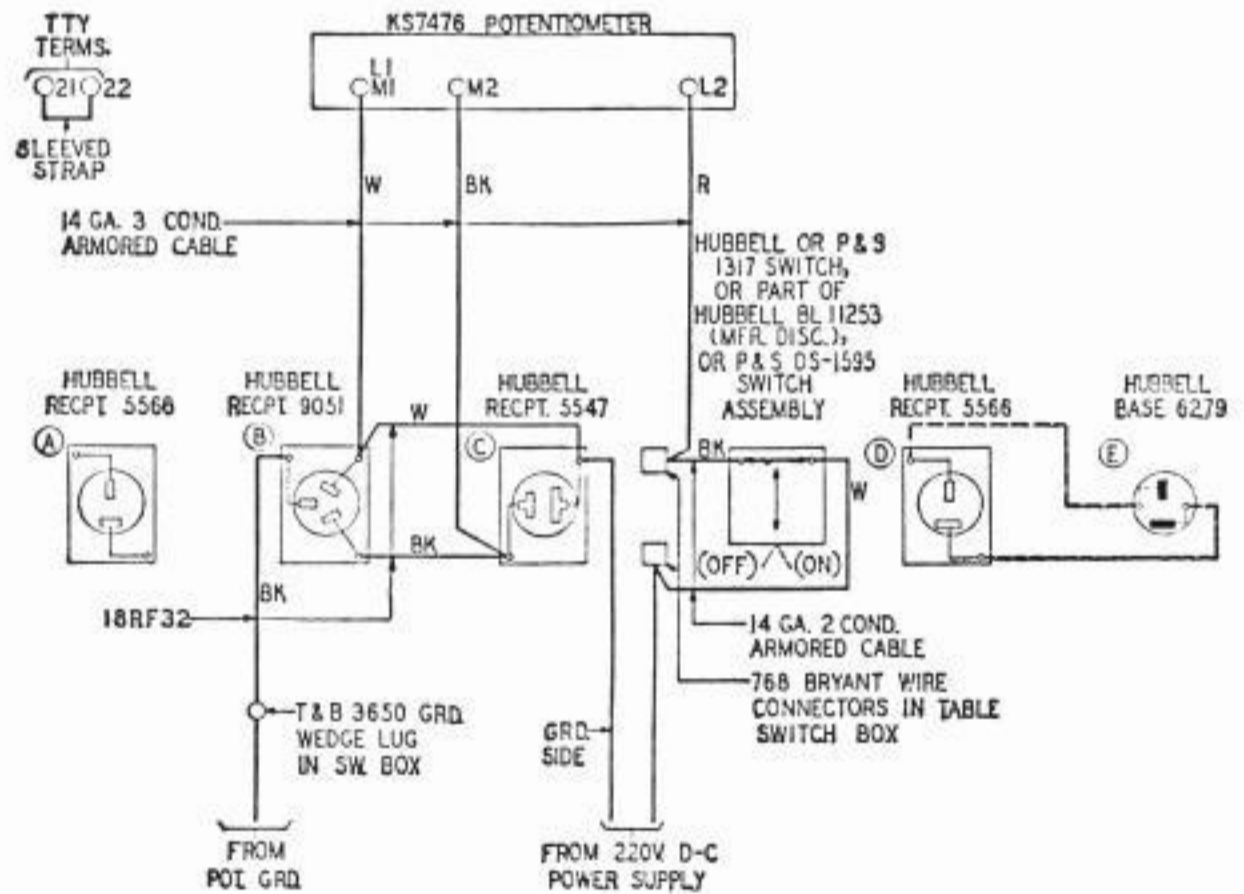


P1.08—14B Table—Without TTY Sub. Set—Remote Control or TTY Switch Control of TTY Motor & Rect. or Mot. Gen.—Power Supplied to Line—with Pot. Grd. (See P1.02 When Pot. Grd. Is Not Used)—115V. AC.

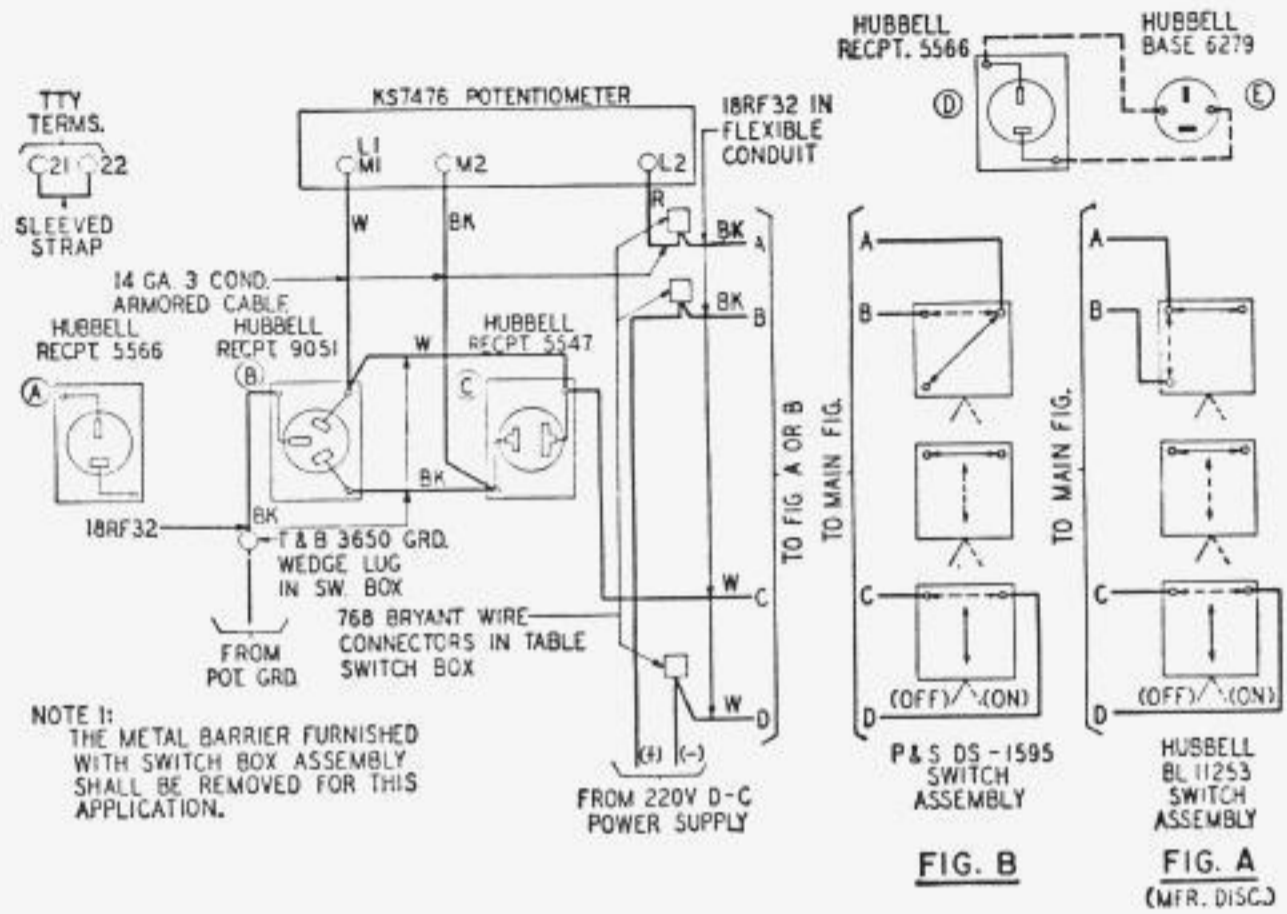




P1.12—14B Table—126A2 Set.



P1.13—14B Table—Neg. Grd. or Pos. Grd. 220V. DC.



P1.14—14B Table—Non-Grd. or Midpoint Grd. 220V. DC.