

RECEIVE - ONLY SET
(Three Page Printers in Universal Cabinet)

Components of the Model 28 PAGE PRINTER SET covered in this bulletin		
MARK II BASE		LB3, 4, 5, 8, 200**
MARK II KEYBOARD		LK3, 4, 5, 7
MARK III KEYBOARD		LK6, 8, 9, 10, 11, 12, 13, 14, 15, 16, 18, 19, 20, 22, 23, 25, 26, 29
MARK II TYPING UNIT	Friction Feed	LP3, 4, 5, 6, 8
	Sprocket Feed	LP7, 9
MARK III TYPING UNIT	Friction Feed	LP10, 12, 13, 14, 15, 16, 17, 18, 19, 20, 21, 23, 24, 25, 26, 27, 34, 35, 39, 40, 41, 42, 43, 45, 47, 49, 54, 59, 64, 65, 68, 76, 82, 99, 101, 103
	Sprocket Feed	LP11, 22, 28, 29, 30, 31, 32, 33, 36, 37, 38, 44, 46, 48, 50, 51, 52, 53, 55, 56, 57, 60, 61, 62, 63, 69, 70, 71, 72, 73, 78, 79, 80, 81, 83, 85, 86, 87, 88, 89, 92, 93, 100
MOTOR UNIT		LMU3, 4, 6, 10, 21, 28
ELECTRICAL SERVICE UNIT		LESU5, 6, 7, 8, 17, 26, 31, 41, 42, 45, 46, 58, 59, 67
CABINET	Table Model	LAC203**, 213**
	Console Model	LAC202**, 204**, 205**, 215**, 216**, 217**
	Stack Mounting	LBAC211**, 227**, 233**
SKIN TIGHT COVER		LPC202**, 203**, 204**, 205**, 206**, 207**

Components of the Model 28 WALL MOUNTED PAGE PRINTER SET covered in this bulletin		
BASE		LB31
KEYBOARD		LK27
TYPING UNIT	Friction Feed	LP96
	Sprocket Feed	LP95, 97, 102
MOTOR UNIT		LMU27
ELECTRICAL SERVICE UNIT		LESU72
SKIN TIGHT COVER		LPC209**, 210**

BELL SYSTEM AND TELETYPE CODE CROSS-REFERENCE

Unit Description	Bell System Code	Teletype Code	Unit Description	Bell System Code	Teletype Code		
BASE OR KEYBOARD	28A	LK3RC106	TYPING UNIT	28D	LP15RX/AR		
	28B	LB4/146		28LA	LP18RA/AGN		
	28B-1	LB4/218		28E	LP19RX/AN		
	28L	LB31		28B-2	LP28RX/AES		
	28C	LK5RC131		28B	LP28RX/AR		
	28D	LK16ARC		28C	LP29RX/AEL		
	28E	LK22BR5		28B-1	LP31WB/AX		
	28G	LK26BRX		28F	LP32RX/AN		
	28K	LK27ARC		28G	LP33RX/AEK		
	28F	LB9/146		28J	LP41RX/AEG		
MOTOR UNIT	28A	LMU3	28J-1	LP47RX/AEG			
	28B	LMU6	28H	LP49RX/AED			
	28LA	LMU21	28H-1	LP49RX/AFA			
ELECTRICAL SERVICE UNIT	28A	LESU5/102	28H-2	LP49RX/AFB			
	28B	LESU7/184	28K	LP49RX/AFB			
	28E	LESU7/134	28L	LP49RX/AFB			
	28E-1	LESU31	28M	LP49RX/AFG			
	28LC	LESU58/256	28Y	LP49RX/AGU			
	28LC-1	LESU58/257	28B	LP60RX/AFN			
	28LD	LESU59/256	28C	LP61RX/AFP			
	28LD-1	LESU59/257	28F	LP62RX/AFQ			
	28M	LESU67	28G	LP63RX/AFW			
	28T	LESU72	28U	LP70RX/AGE			
	CABINET	28A**	LAC202**107	28W	LP71RX/AGF		
		28B**	LAC204**240	28LD	LP80RA/AGP		
28C**		LAC203**241	28LE	LP81RA/AGP			
28D**		LAC204**250	28LB	LP82RA/AGQ			
28E**		LAC203**238	28LC	LP82RA/AGR			
28LB**		LAC215**	28B	LP86RX/AGX			
28J**		LAC216**	28C	LP87RX/AGY			
28LA**		LBAC227**	28F	LP88RX/AGZ			
COVER		28A**	LPC205**	28G	LP89RX/AHA		
		28L**	LPC209**	28S	LP92RX/AHD		
	28M**	LPC210**	28AA	LP93RX/AHE			
GEAR SETS	60 WPM	28A	151060	28AG	LP95RX/AGE		
		28A-1	161293	28AJ	LP96RX/AR		
	75 WPM	28B	151075	28AE	LP97YK/AGE		
		28B-1	161294	28LF	LP100RA/AHL		
	100 WPM	28C	151100	28AH	LP102RX/AGE		
		28C-1	161295	TYPE BOX	28A	151930 (RA)	
COPYHOLDER	28A**	152901**	28A-1		155701 (WY)		
	28B**	153900**	28A-2		161362 (XR)		
	PAPER SUPPLY BOX	28A**	152349**		28B	152881 (RB)	
		TYPING UNIT	28D		151931 (RC)	28B-1	161363 (XS)
			28E		151931 (RC)	28C	151931 (RC)
			28F		151937 (RD)	28C-1	161364 (XT)
			28G		157018 (WN)	28D	151937 (RD)
			28H		161365 (XV)	28D-1	157018 (WN)
			28A		155709 (XH)	28D-2	161365 (XV)
			28B	155693 (WP)	28E	155709 (XH)	
28C			154643 (RV)	28E-1	155693 (WP)		
28D			153518 (WA)	28F	154643 (RV)		
28E	164348 (YK)		28F-1	153518 (WA)			
28F	176651 (YP)	28G	164348 (YK)				
28G		28H	176651 (YP)				

BELL SYSTEM ONLY

When ordering parts from this bulletin, prefix each number with the letters TP.

NOTE: REST CABINET ON A LEVEL FLOOR WHEN MAKING THE FOLLOWING ADJUSTMENTS.

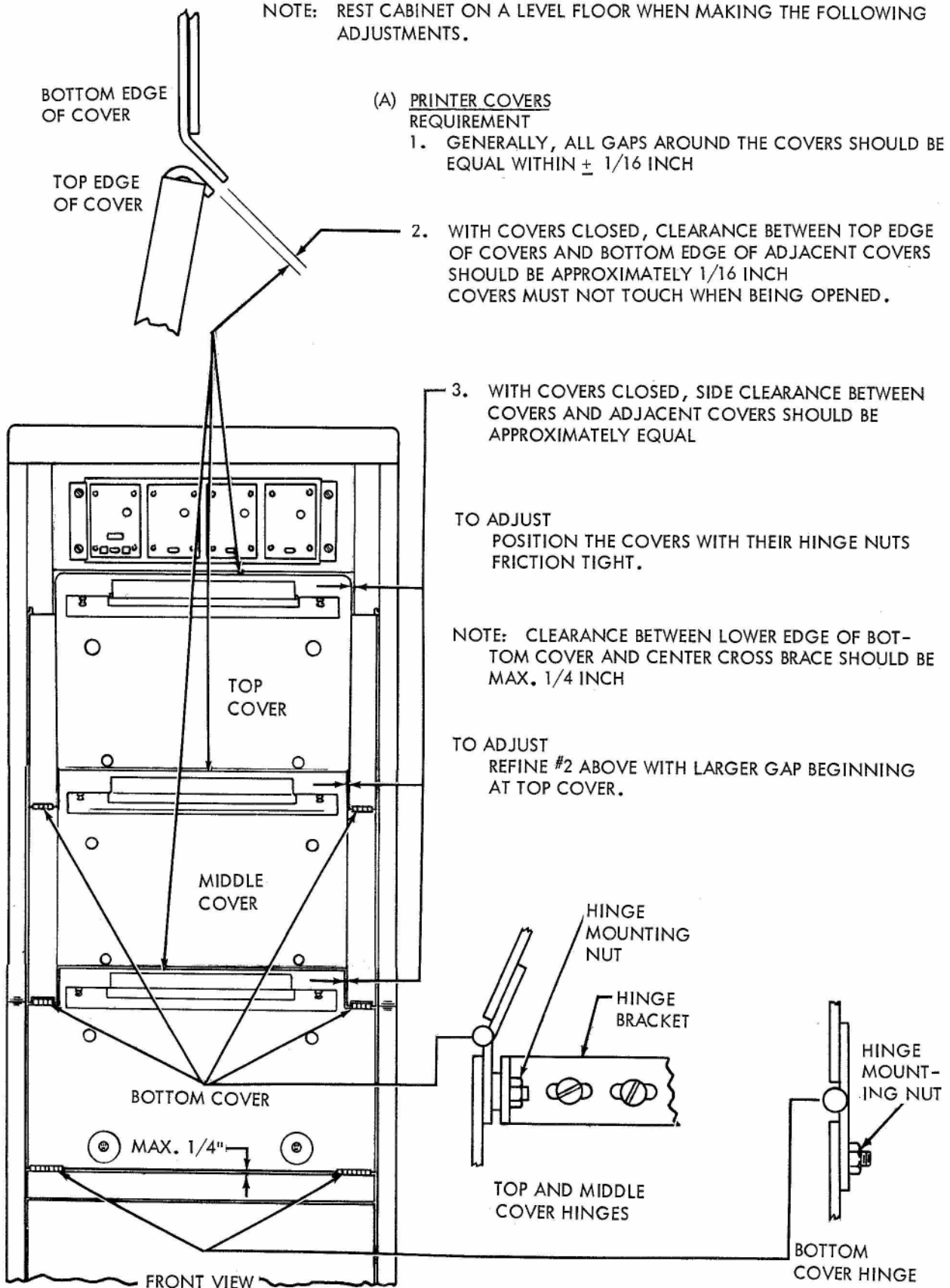


FIGURE 1-86. CABINET, FOR MULTIPLE MOUNTING PAGE PRINTERS

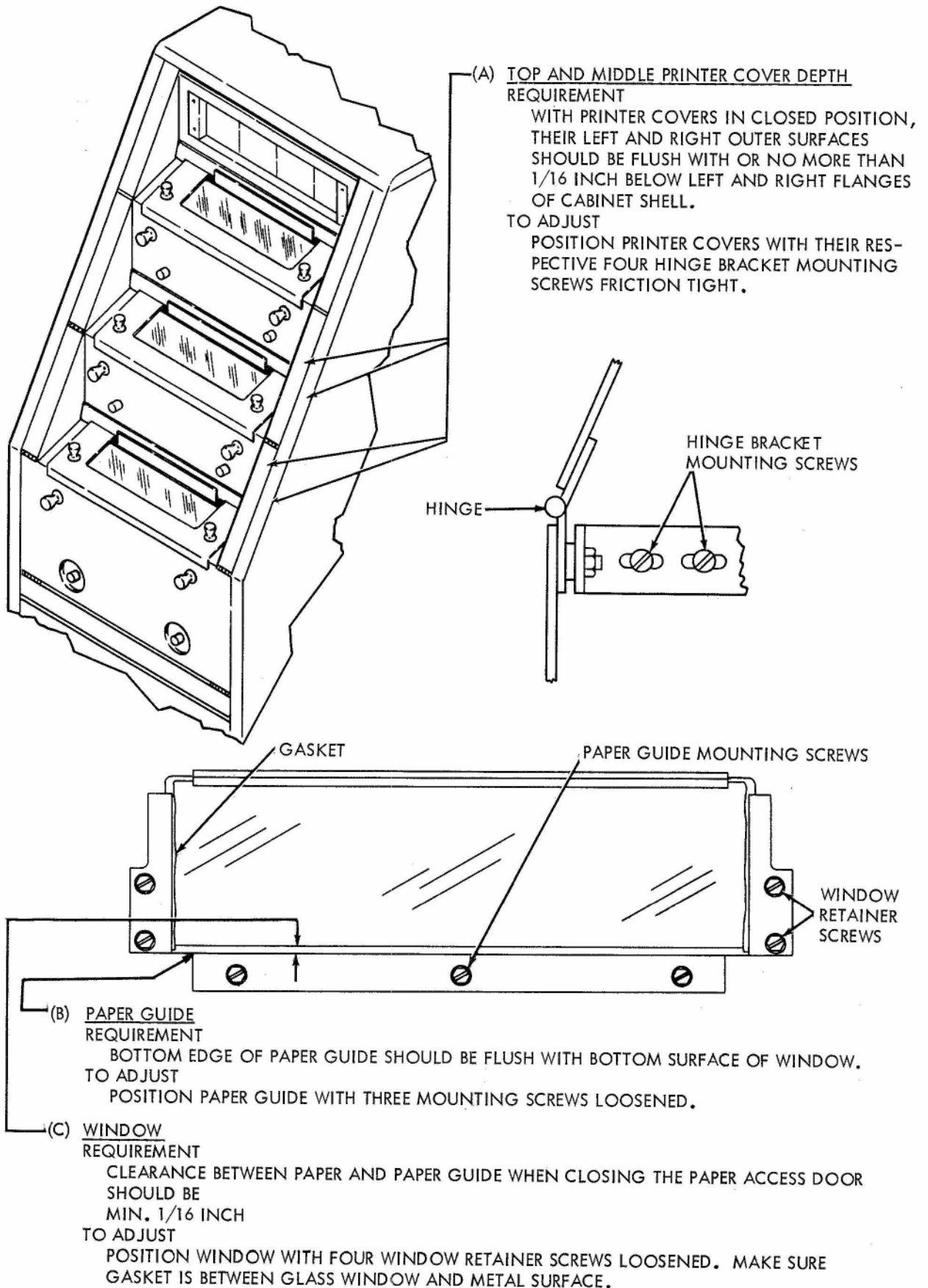


FIGURE 1-87. CABINET, FOR MULTIPLE MOUNTING PAGE PRINTERS

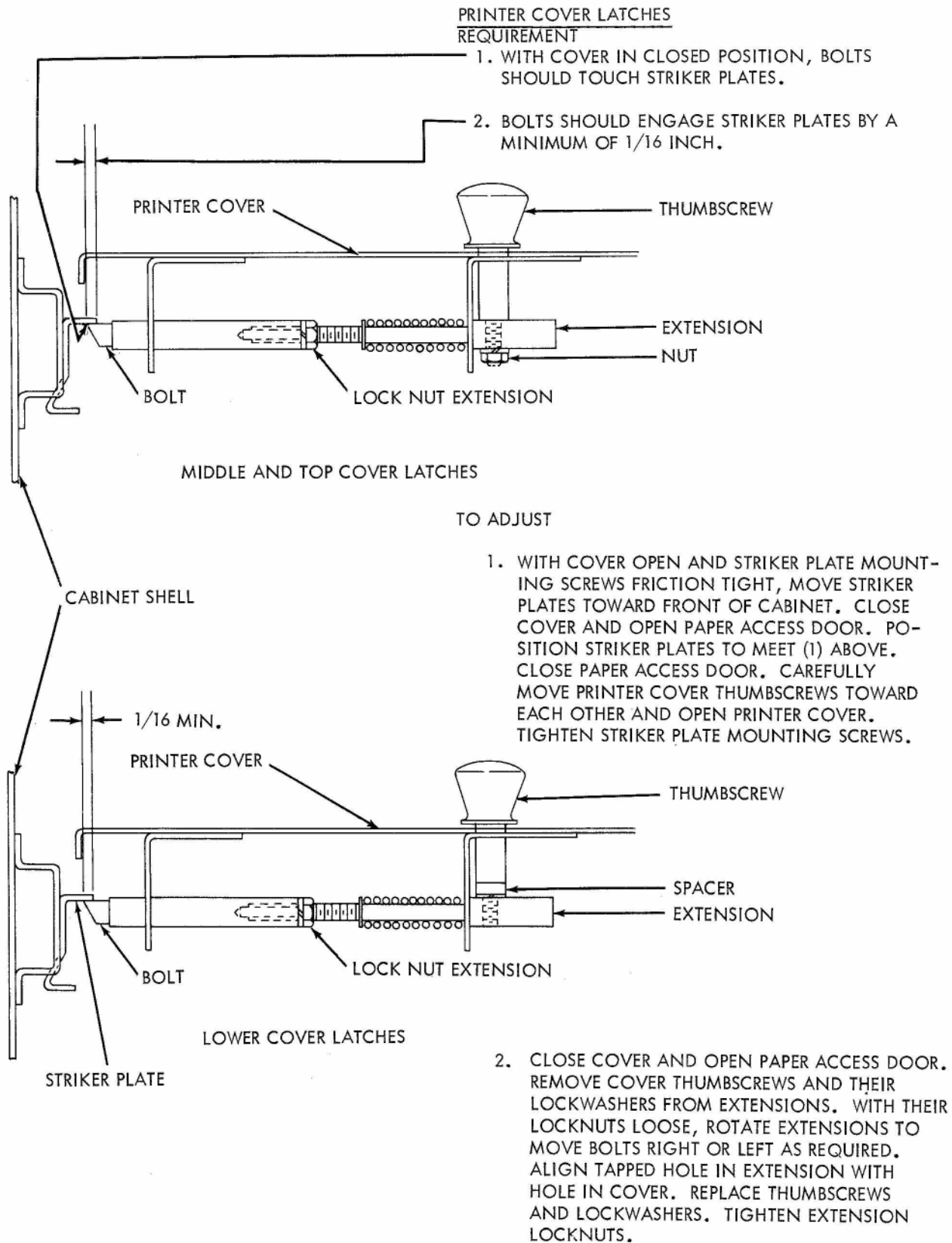


FIGURE 1-88. CABINET, FOR MULTIPLE MOUNTING PAGE PRINTERS

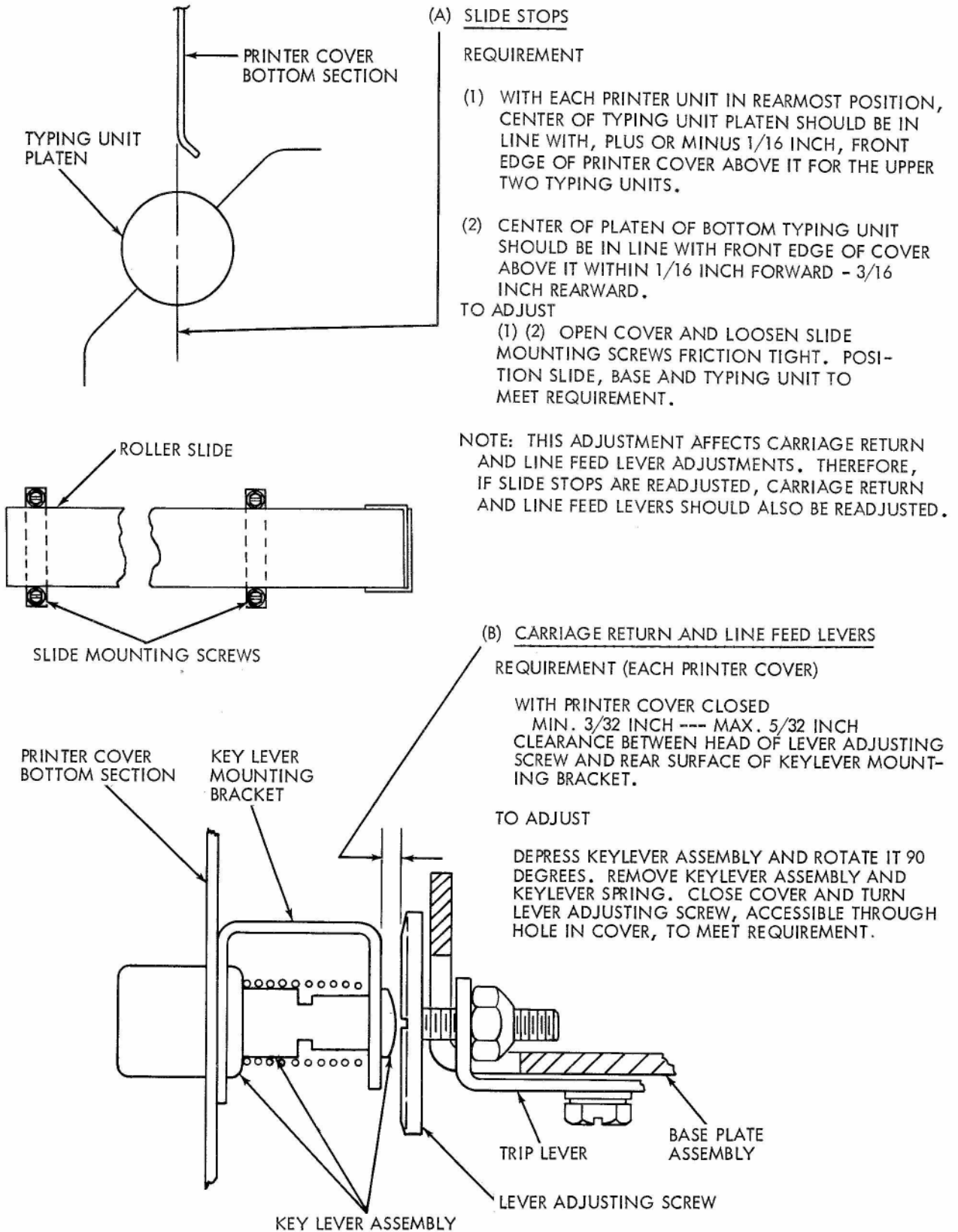


FIGURE 1-89. CABINET, FOR MULTIPLE MOUNTING PAGE PRINTERS

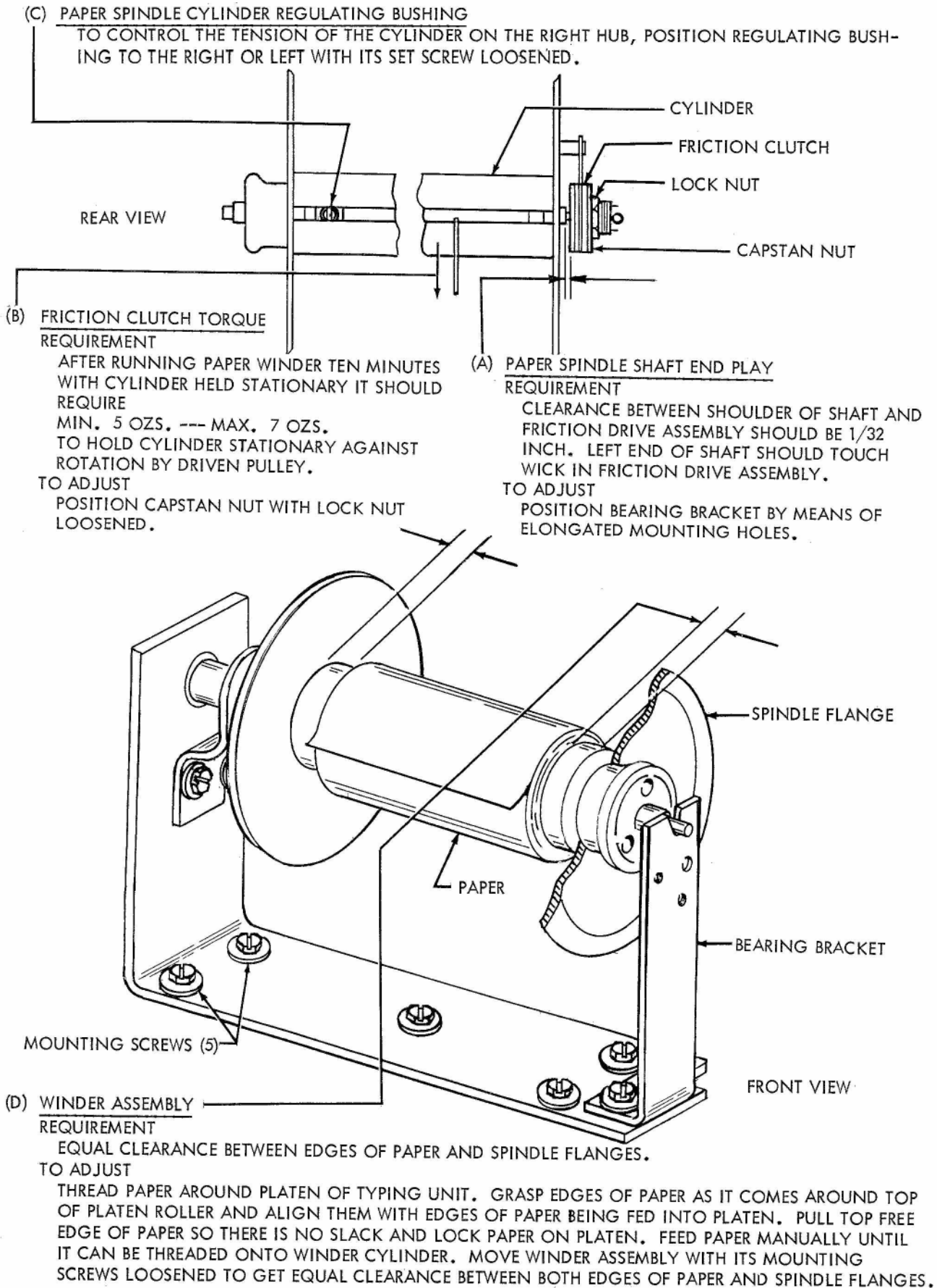


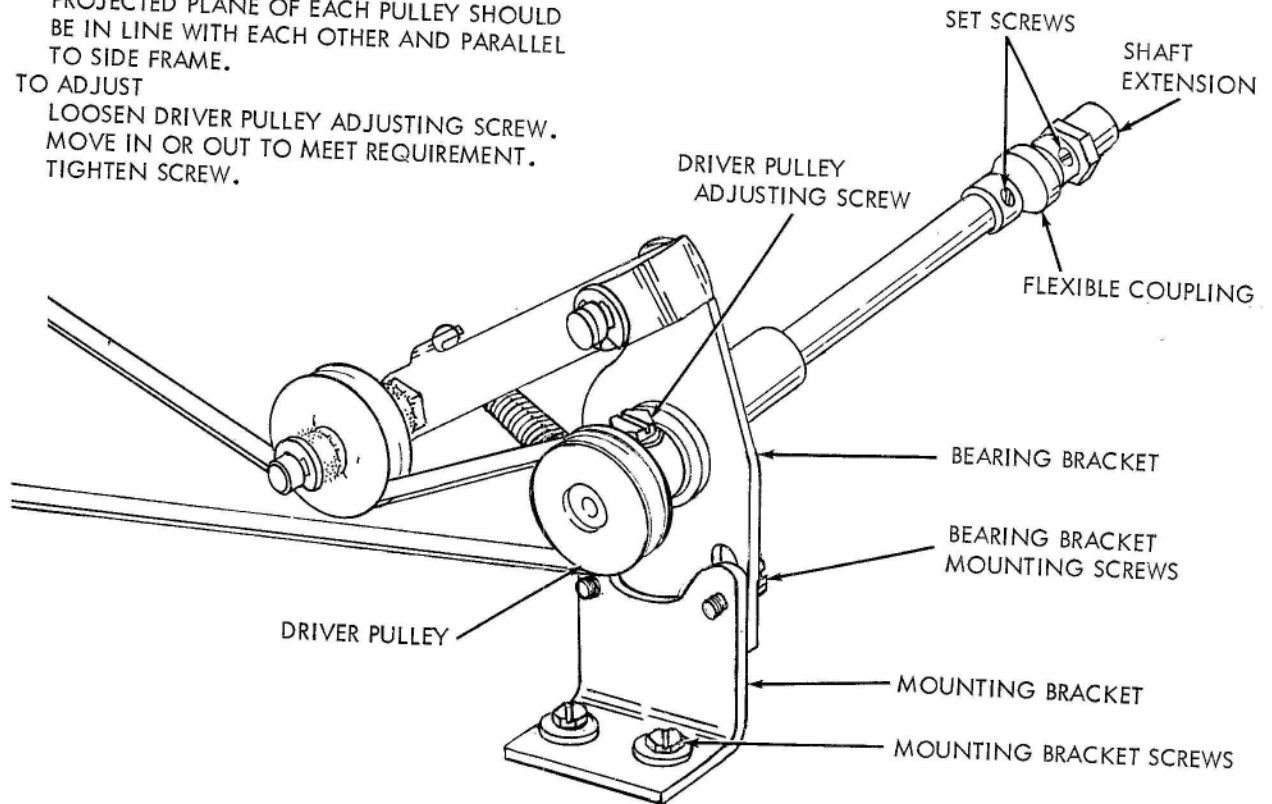
FIGURE 1-90. PAPER WINDER (FOR MULTIPLE MOUNTED PAGE PRINTERS)

(A) PULLEY ALIGNMENT**REQUIREMENT**

PROJECTED PLANE OF EACH PULLEY SHOULD BE IN LINE WITH EACH OTHER AND PARALLEL TO SIDE FRAME.

TO ADJUST

LOOSEN DRIVER PULLEY ADJUSTING SCREW. MOVE IN OR OUT TO MEET REQUIREMENT. TIGHTEN SCREW.

**(B) BEARING BRACKET ADJUSTMENT**

NOTE: THE INTERMEDIATE GEAR BRACKET ADJUSTMENT (SEE FIG. 1-11) SHOULD BE MADE BEFORE MAKING THIS ADJUSTMENT.

REQUIREMENT

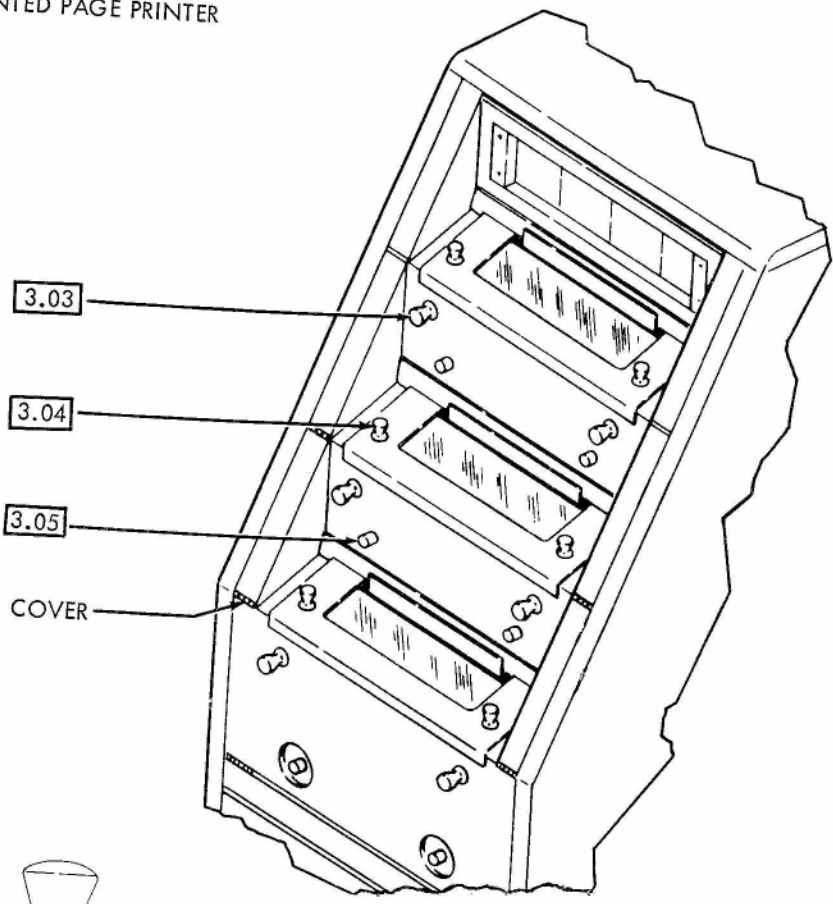
BEARING BRACKET SHOULD BE POSITIONED SO THAT CENTER LINE OF INTERMEDIATE SHAFT EXTENSION WILL COINCIDE WITH CENTER LINE OF INTERMEDIATE SHAFT IN BOTH HORIZONTAL AND VERTICAL PLANES.

TO ADJUST

- (1) HORIZONTAL - LOOSEN MOUNTING BRACKET SCREWS TO FRICTION TIGHT. LOOSEN SET SCREWS IN FLEXIBLE COUPLING AND SLIDE COUPLING TOWARD PULLEY END OF SHAFT SO OPPOSITE END OF SHAFT IS VISIBLE. POSITION BRACKET TO ALIGN SHAFT EXTENSION WITH INTERMEDIATE SHAFT ON KEYBOARD BASE.
- (2) VERTICAL - LOOSEN BEARING BRACKET MOUNTING SCREWS TO FRICTION TIGHT. POSITION BEARING BRACKET TO ALIGN SHAFT EXTENSION WITH INTERMEDIATE SHAFT ON KEYBOARD BASE. RETIGHTEN SCREWS. CONNECT SHAFT AND SHAFT EXTENSION BY REPLACING AND FASTENING FLEXIBLE COUPLING IN POSITION.

FIGURE 1-91. PAPER WINDER (FOR MULTIPLE MOUNTED PAGE PRINTERS)

3.02 CABINET FOR MULTIPLE MOUNTED PAGE PRINTER



04 HINGES (6)

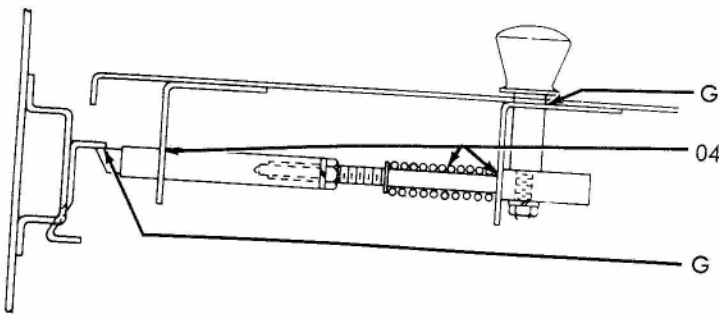
3.03

3.04

3.05

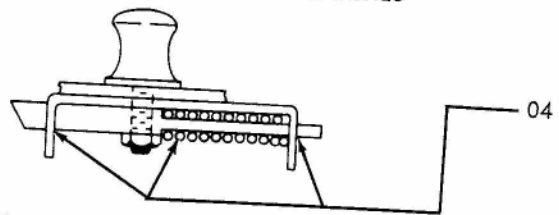
COVER

3.03 CABINET, COVER LATCHES



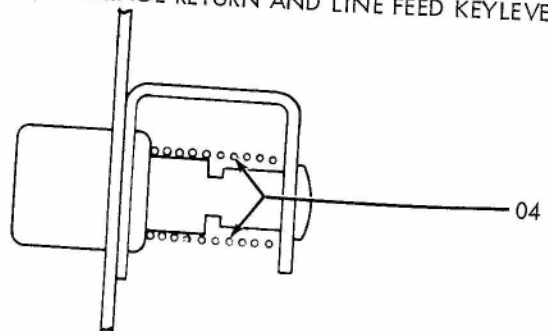
G SLIDING MEMBERS COVER LATCHES (6)
 04 SPRINGS AND BRACKETS COVER LATCHES (6)
 G SLIDING MEMBERS LATCH BOLT (6)

3.04 CABINET, PAPER ACCESS DOOR LATCHES



04 SPRINGS AND BRACKETS ACCESS DOOR LATCHES (6)

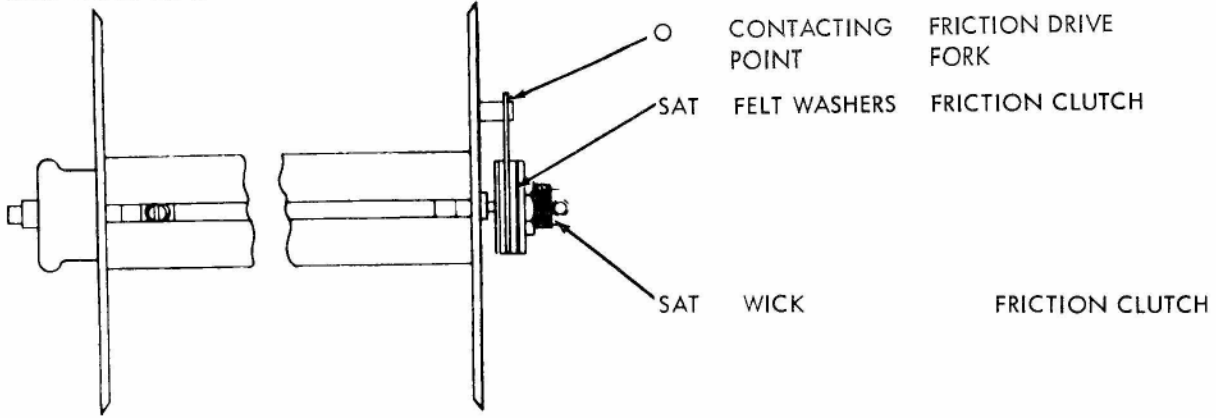
3.05 CABINET, CARRIAGE RETURN AND LINE FEED KEYLEVERS



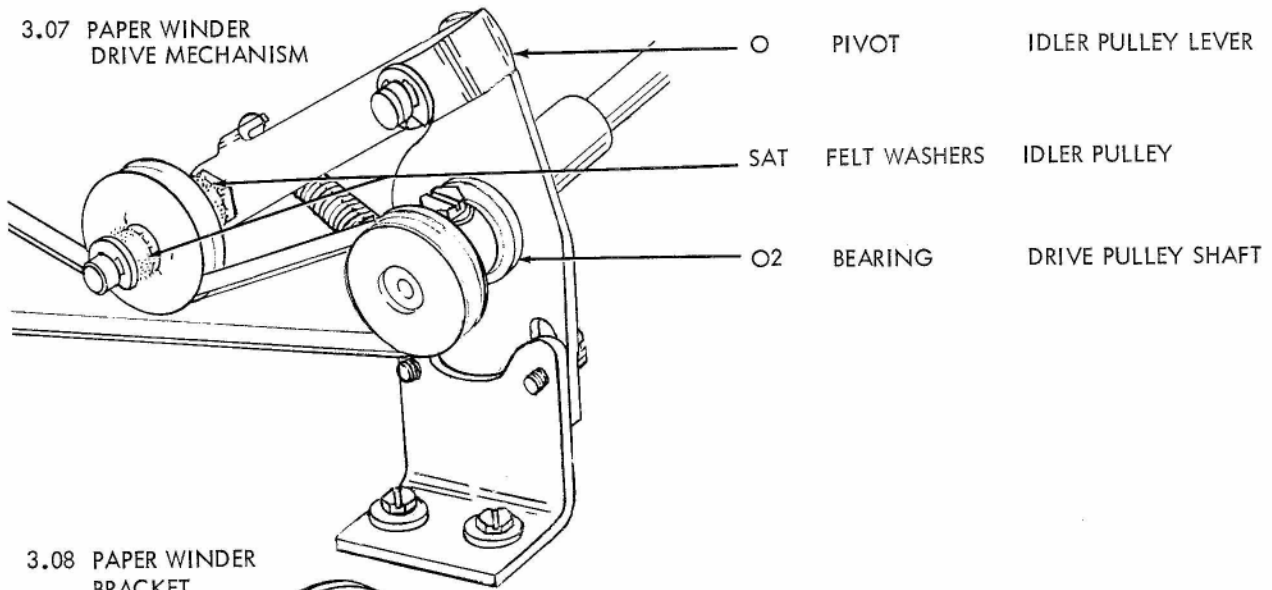
04 SPRING KEYLEVER (6)

CHANGE 5

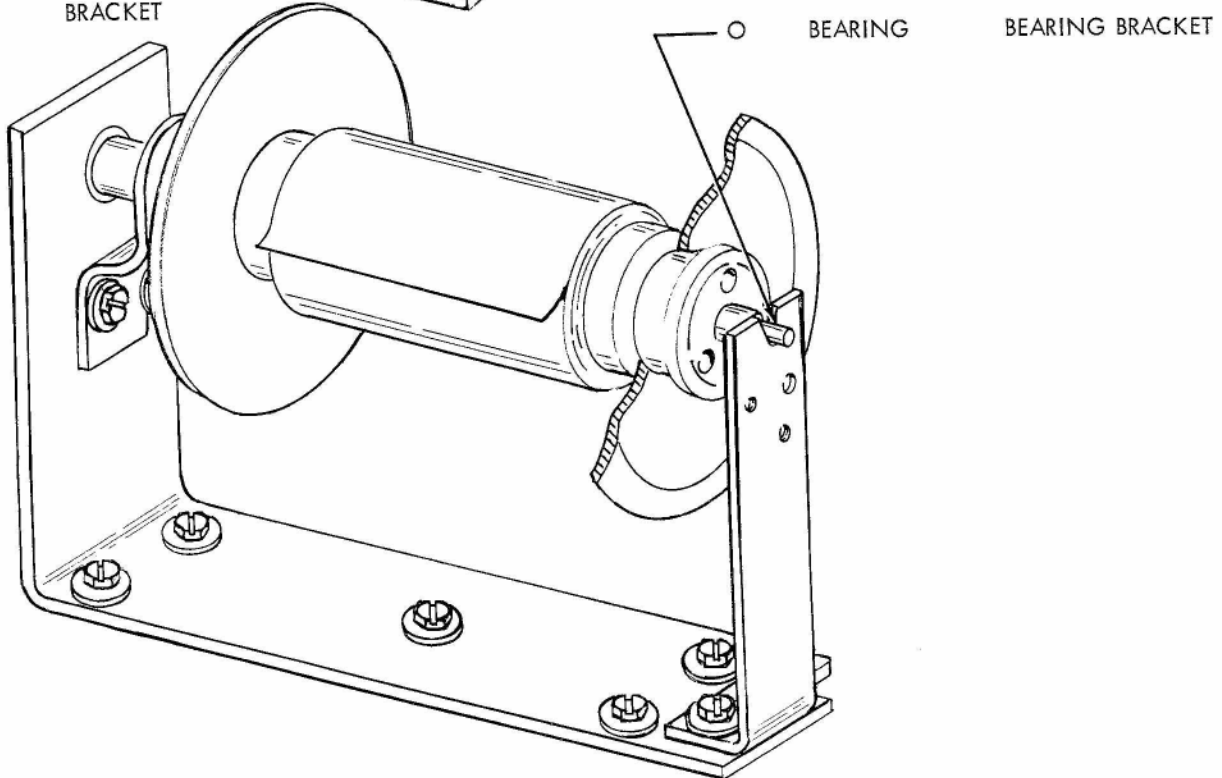
3.06 PAPER WINDER CLUTCH MECHANISM



3.07 PAPER WINDER DRIVE MECHANISM



3.08 PAPER WINDER BRACKET



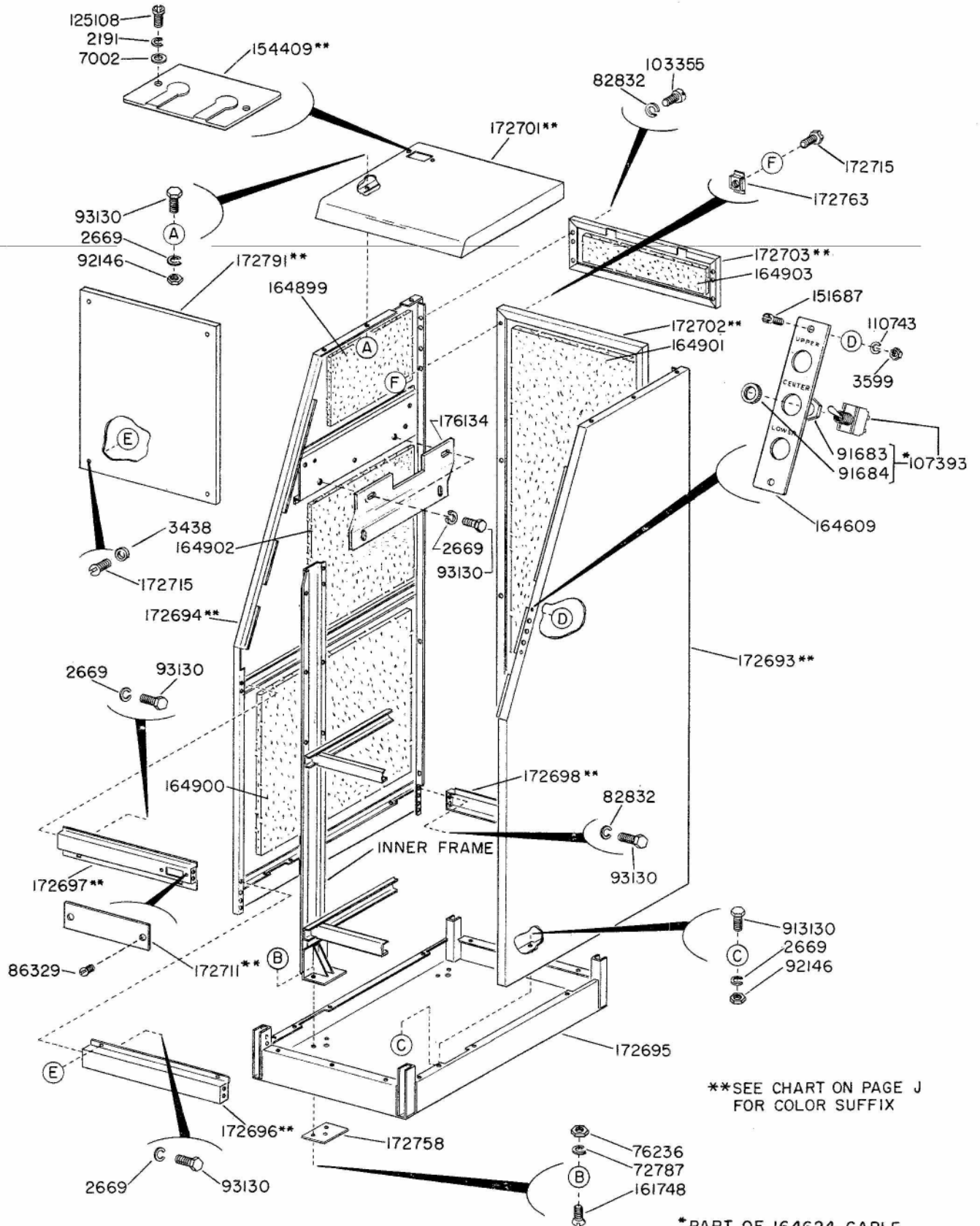


FIGURE 5-37. CABINET BODY ASSEMBLY (LBAC211**)

1149B

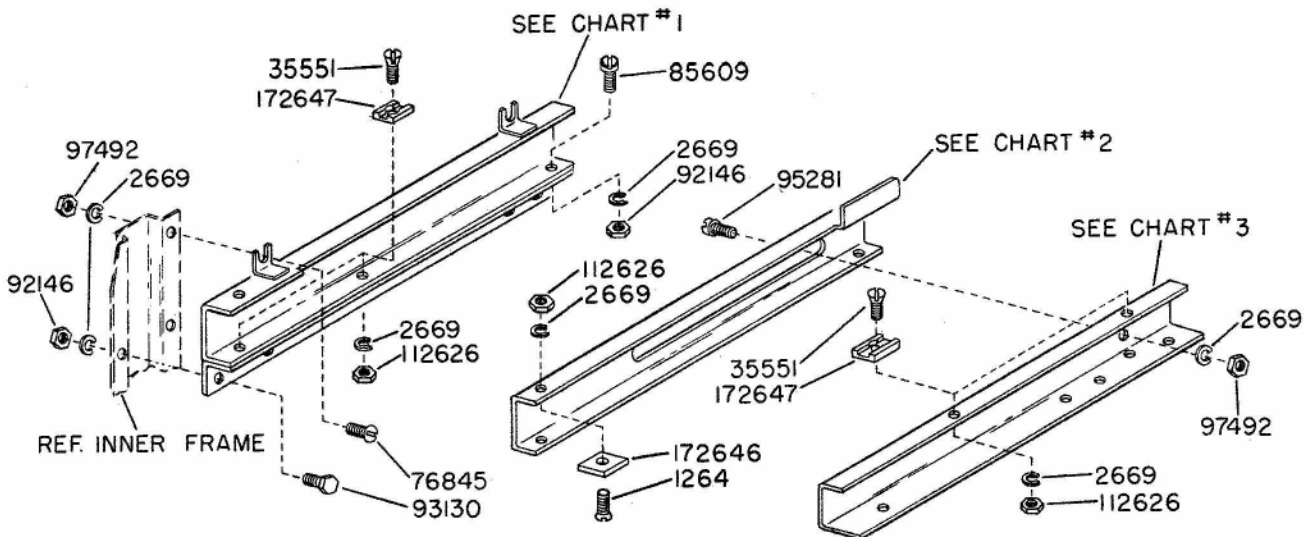
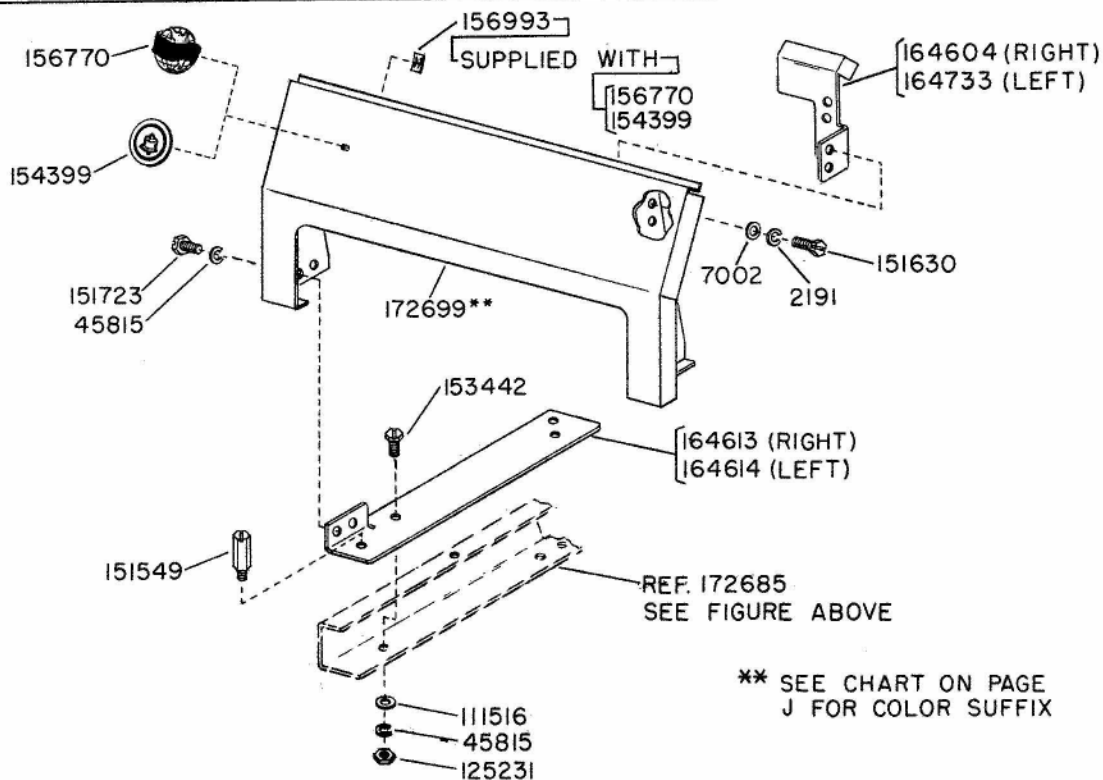


CHART #1		
DRAWER LOCATION	SIDE	PART NUMBER
TOP	LEFT	172650
	RIGHT	172651
CENTER	LEFT	172654
	RIGHT	172655
BOTTOM	LEFT	172659
	RIGHT	172658

CHART #2		
DRAWER LOCATION	SIDE	PART NUMBER
TOP	LEFT	172683
CENTER BOTTOM	RIGHT	172682

CHART #3		
DRAWER LOCATION	SIDE	PART NUMBER
TOP	LEFT	172685
CENTER BOTTOM	RIGHT	172684

FIGURE 5-38. SLIDE MECHANISM (LBAC211**)



** SEE CHART ON PAGE J FOR COLOR SUFFIX

FIGURE 5-39. SEND-RECEIVE KEYBOARD COVER (LBAC211**)

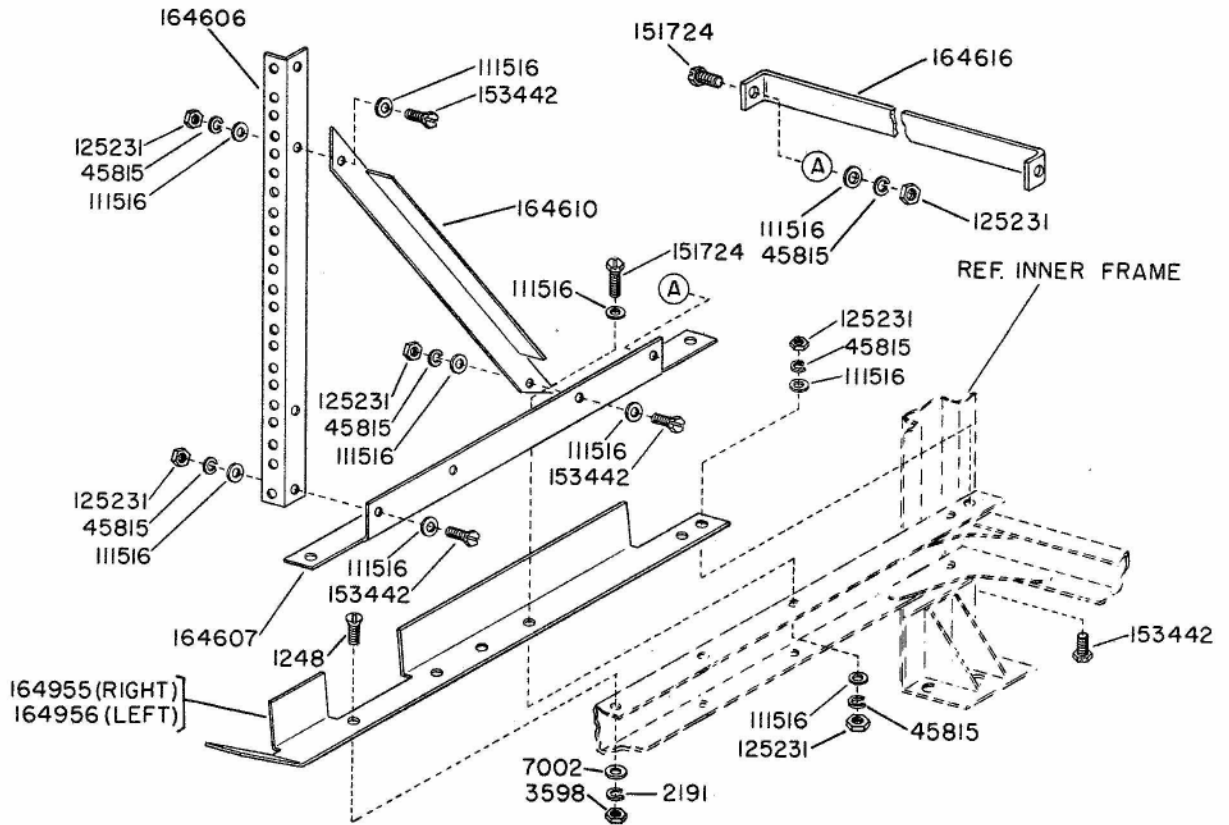


FIGURE 5-40. RELAY RACK FRAME ASSEMBLY

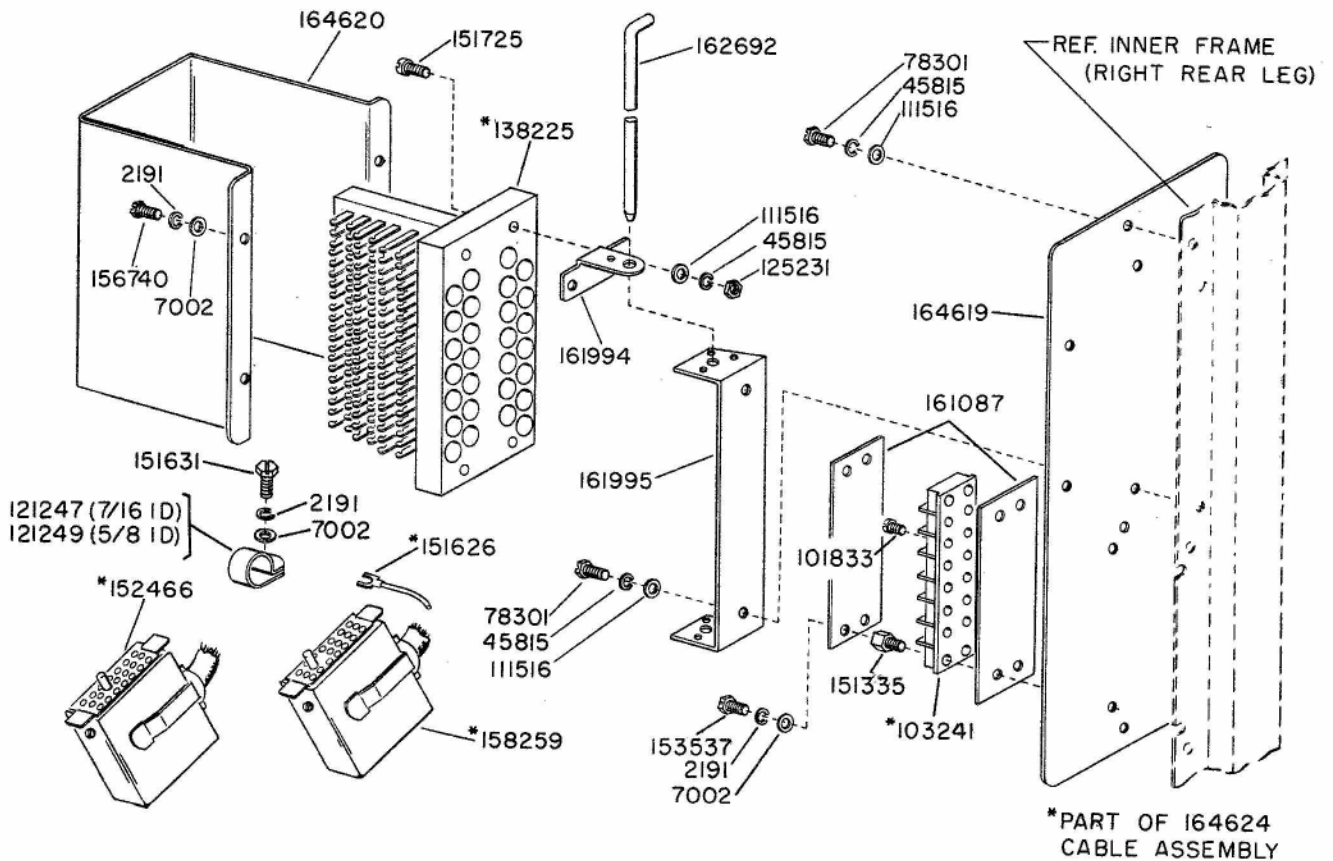


FIGURE 5-41. TERMINAL BLOCKS AND CABLE CONNECTORS

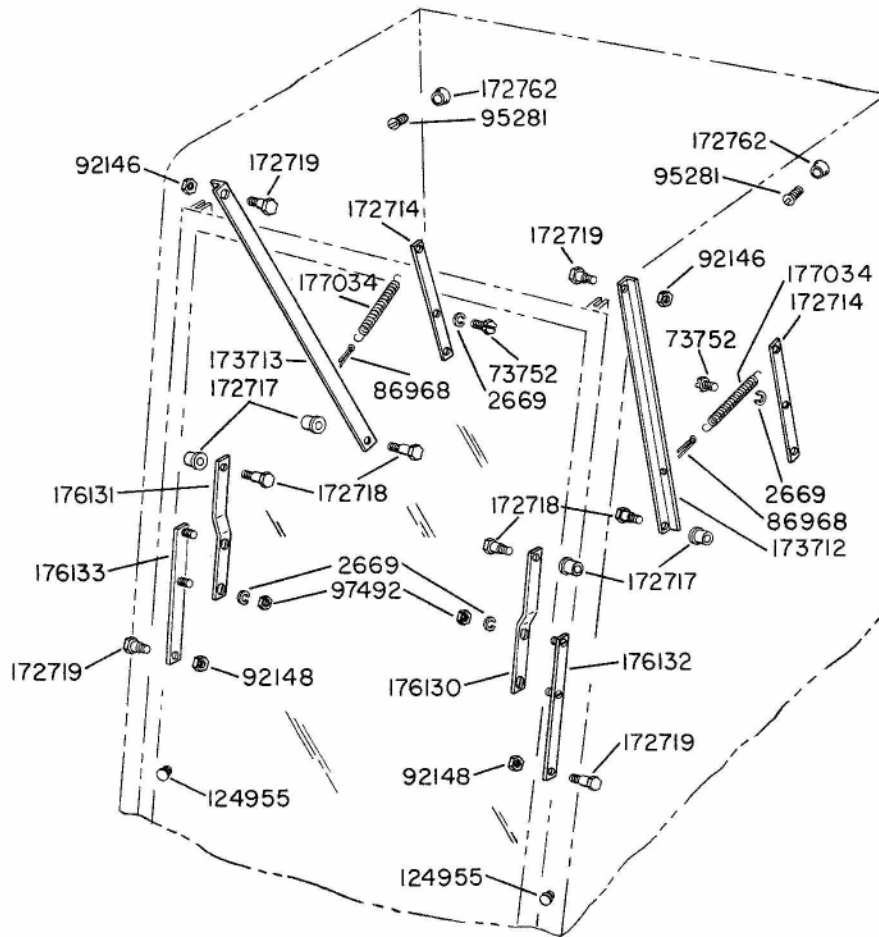
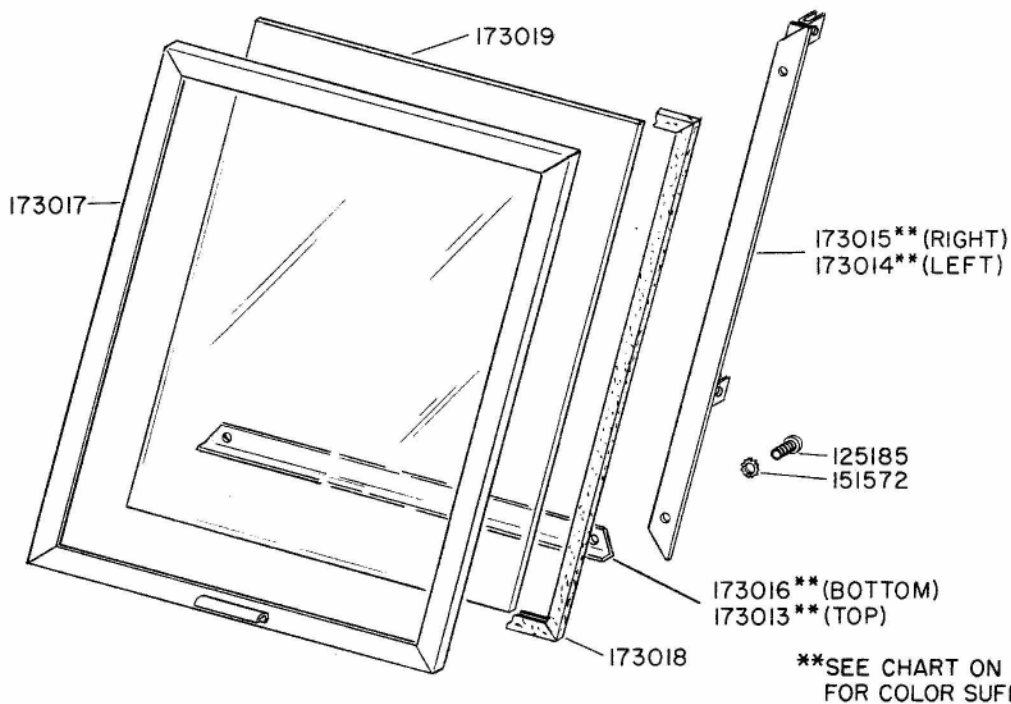


FIGURE 5-42. DOOR ARM MECHANISM



**SEE CHART ON PAGE J FOR COLOR SUFFIX

FIGURE 5-43. 172700** DOOR ASSEMBLY

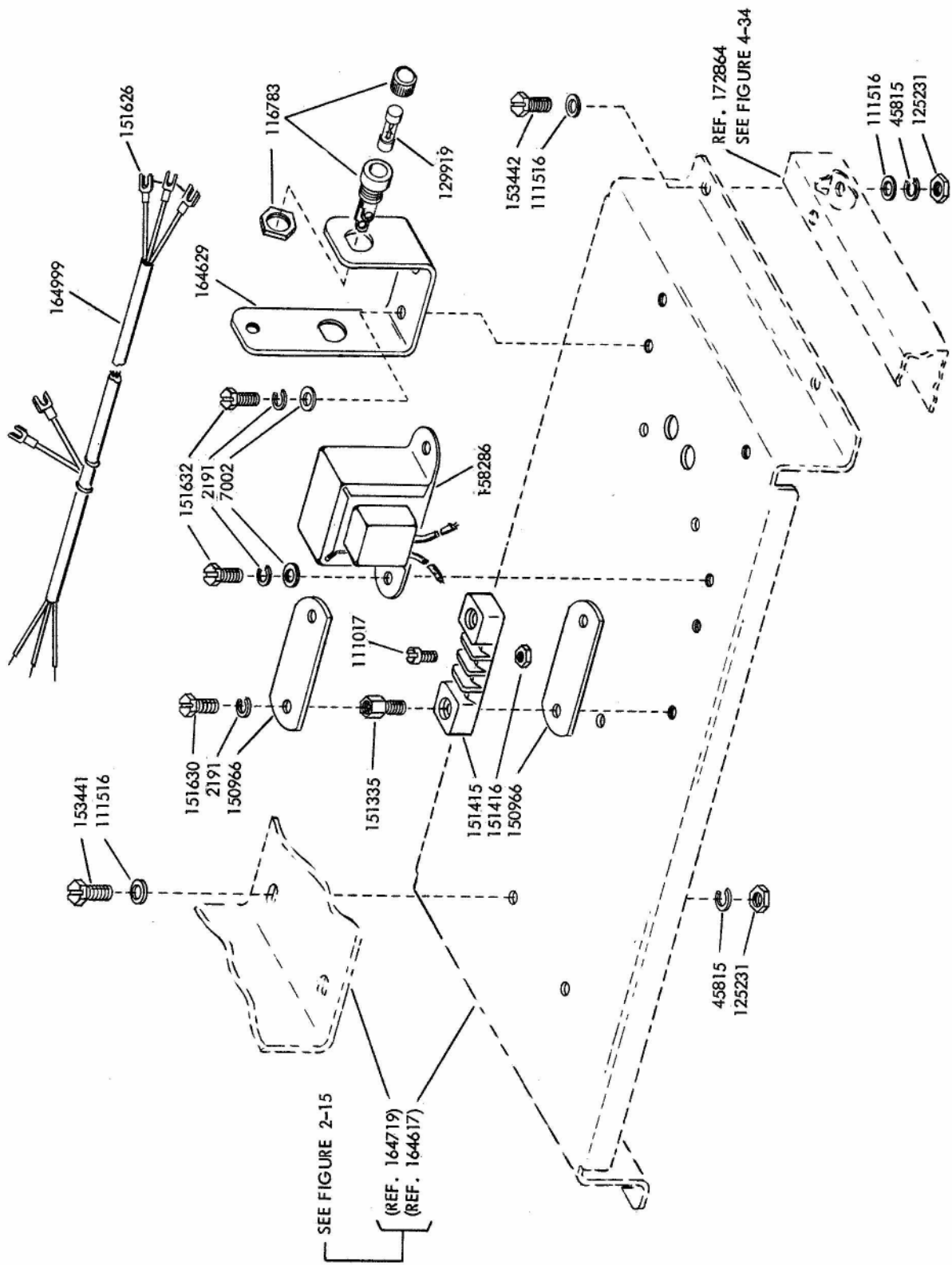
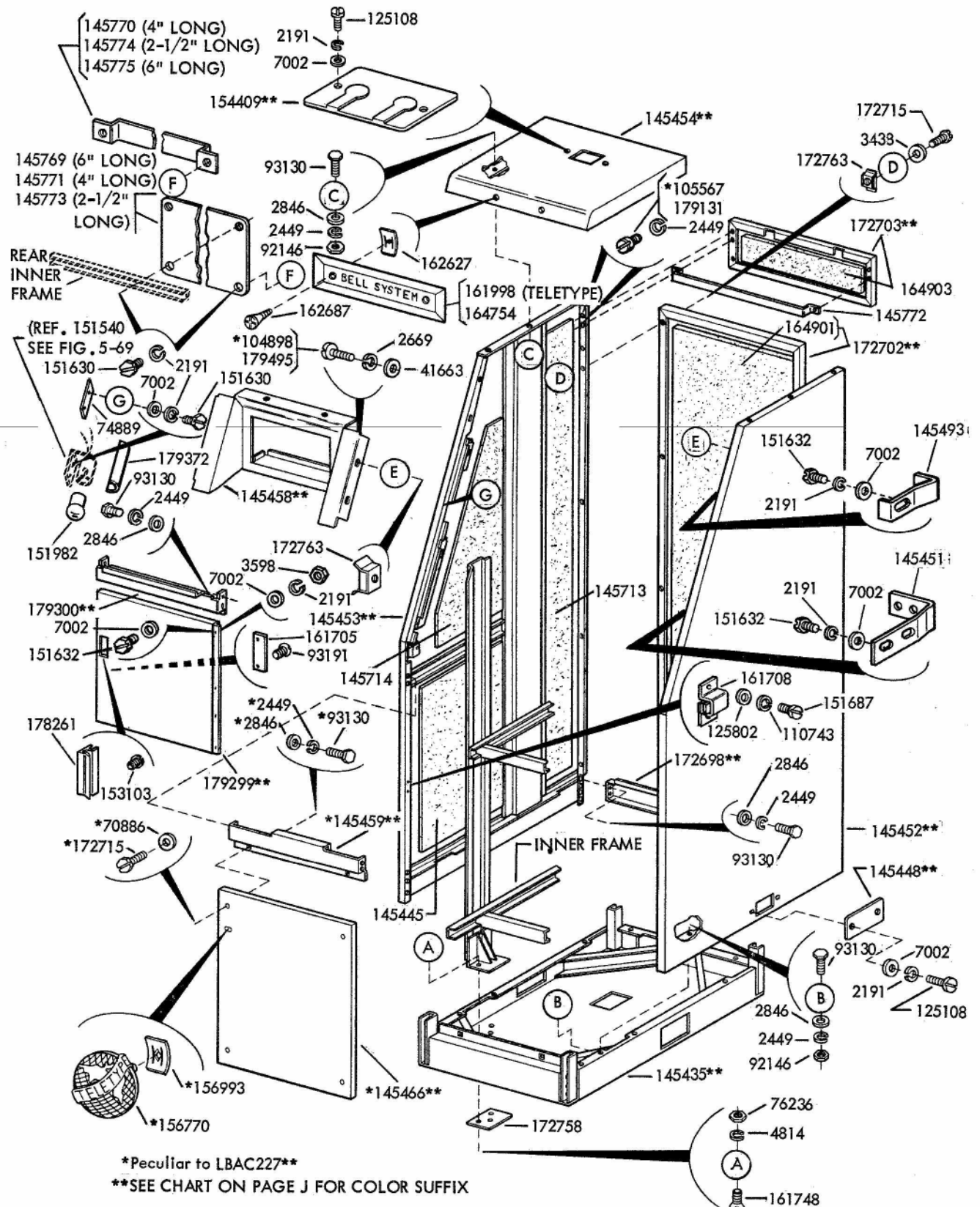
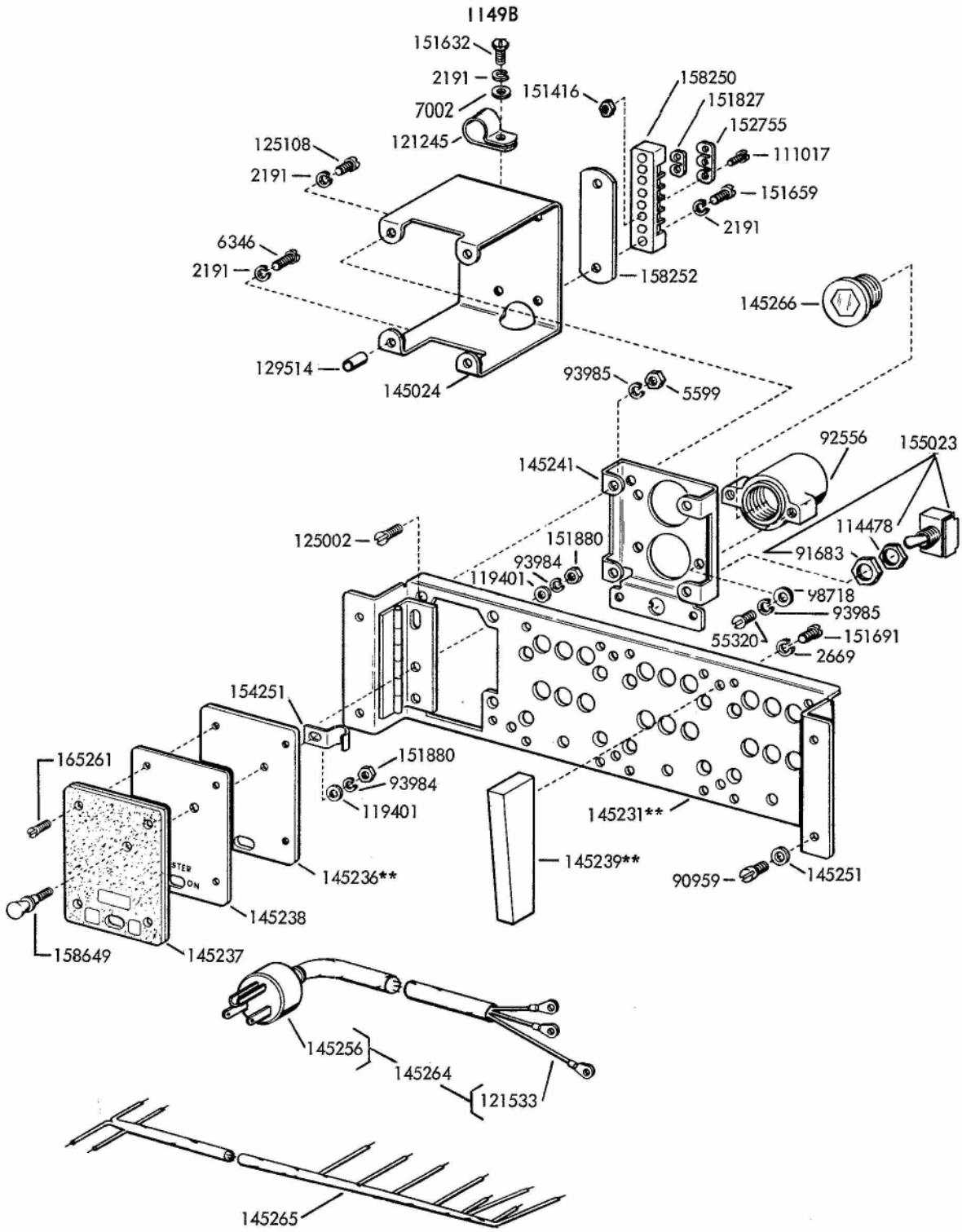


FIGURE 5-45. PAPER WINDER SHELF FOR SEND-RECEIVE BASE





** SEE CHART ON PAGE J FOR COLOR SUFFIX

FIGURE 5-47. PANEL MOUNTING ASSEMBLY (LBAC227**)

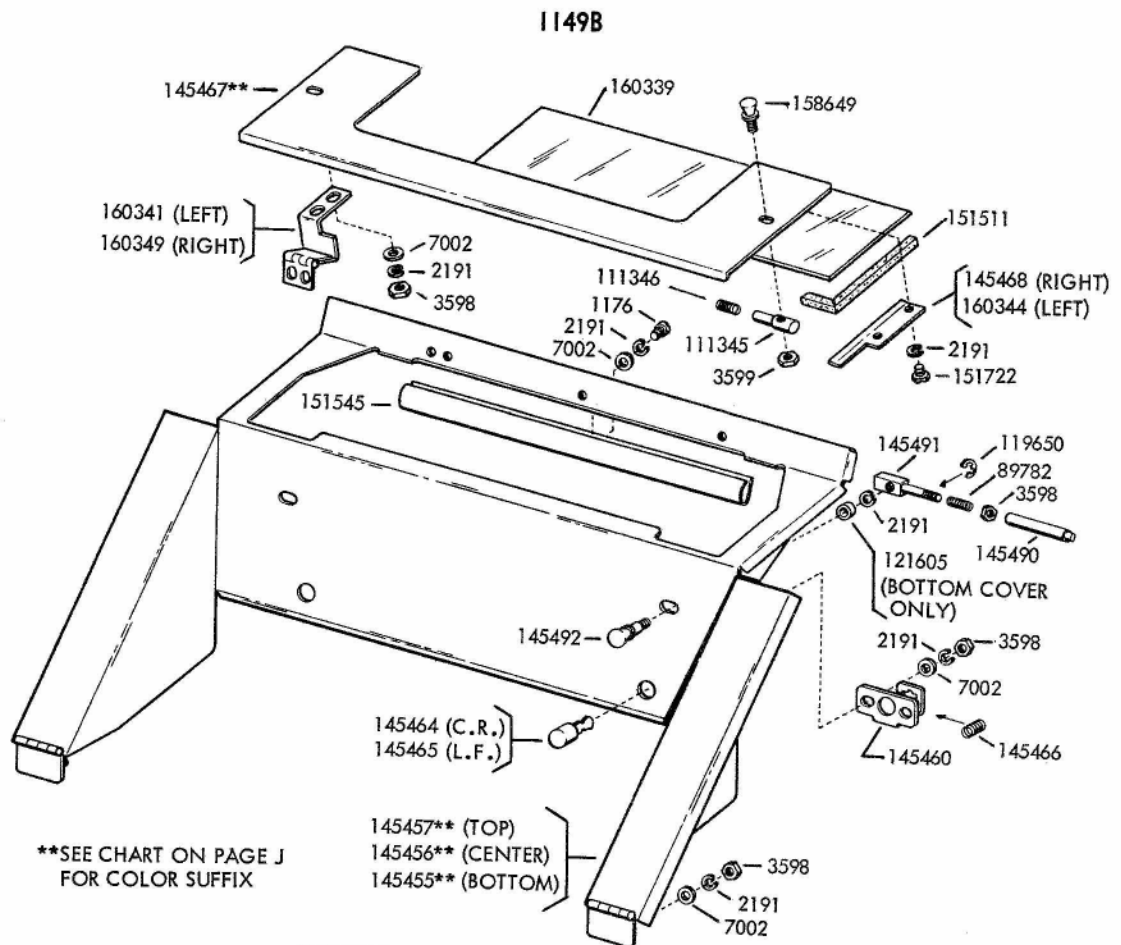
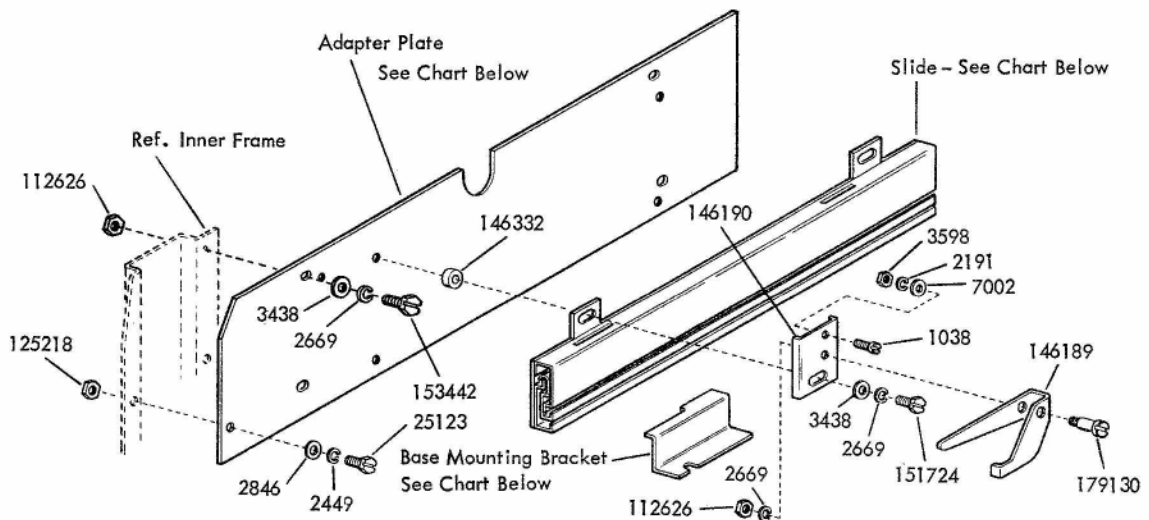


FIGURE 5-48. COVER ASSEMBLY (LBAC227**)



Description	Location						
	Top		Center		Bottom		
	Left	Right	Left	Right	Left	Right	
Adapter Plate	146171	146171	146173	146173	146179	146179	
Slide	146187	146188	146185	146186	146185	146186	
Base Mounting Bracket	Front	146164	146163	146170	146169	179297	179298
	Rear	146165	146165	146168	146167		

FIGURE 5-49. SLIDE ASSEMBLIES (LBAC228** AND LBAC233**)

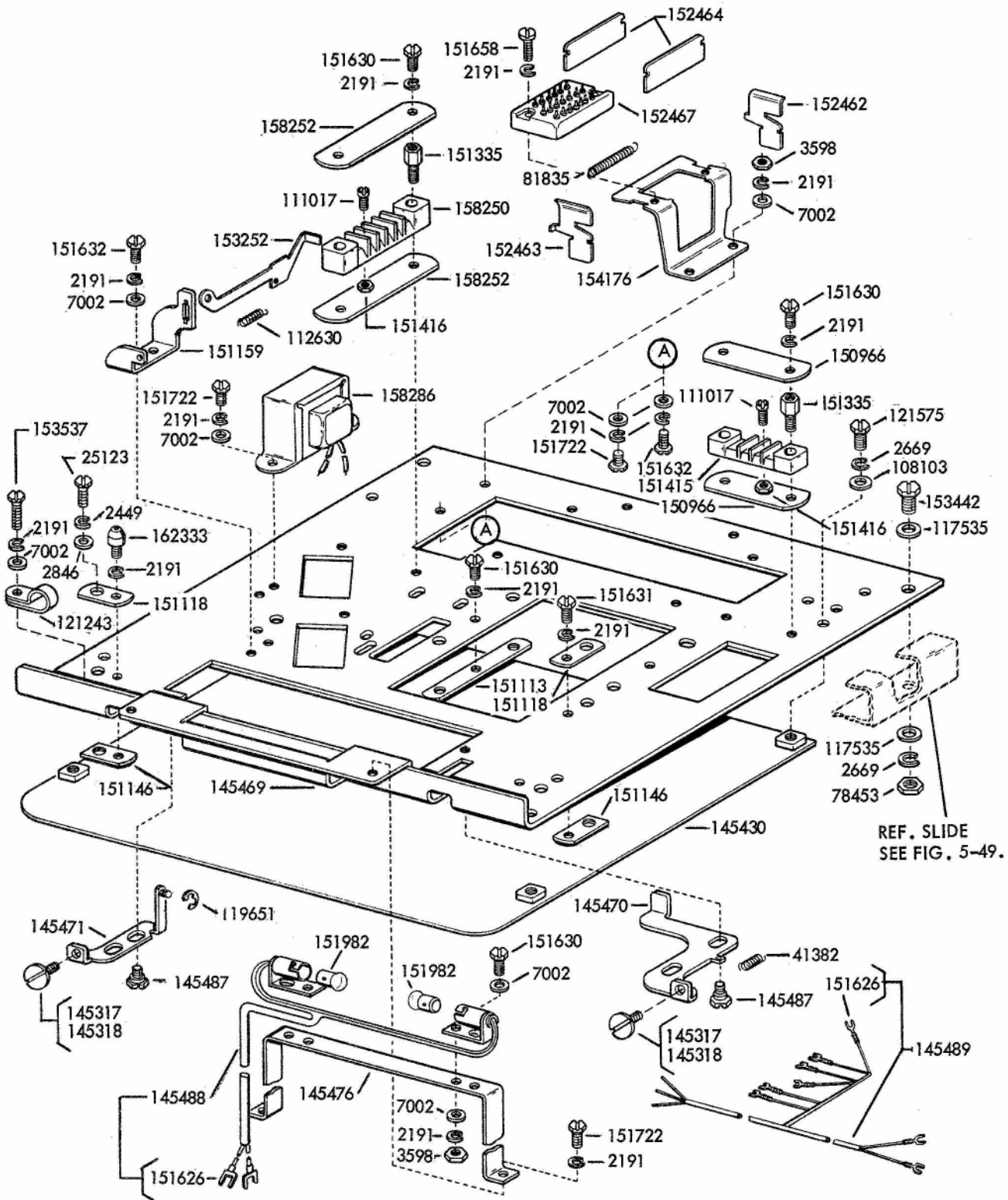
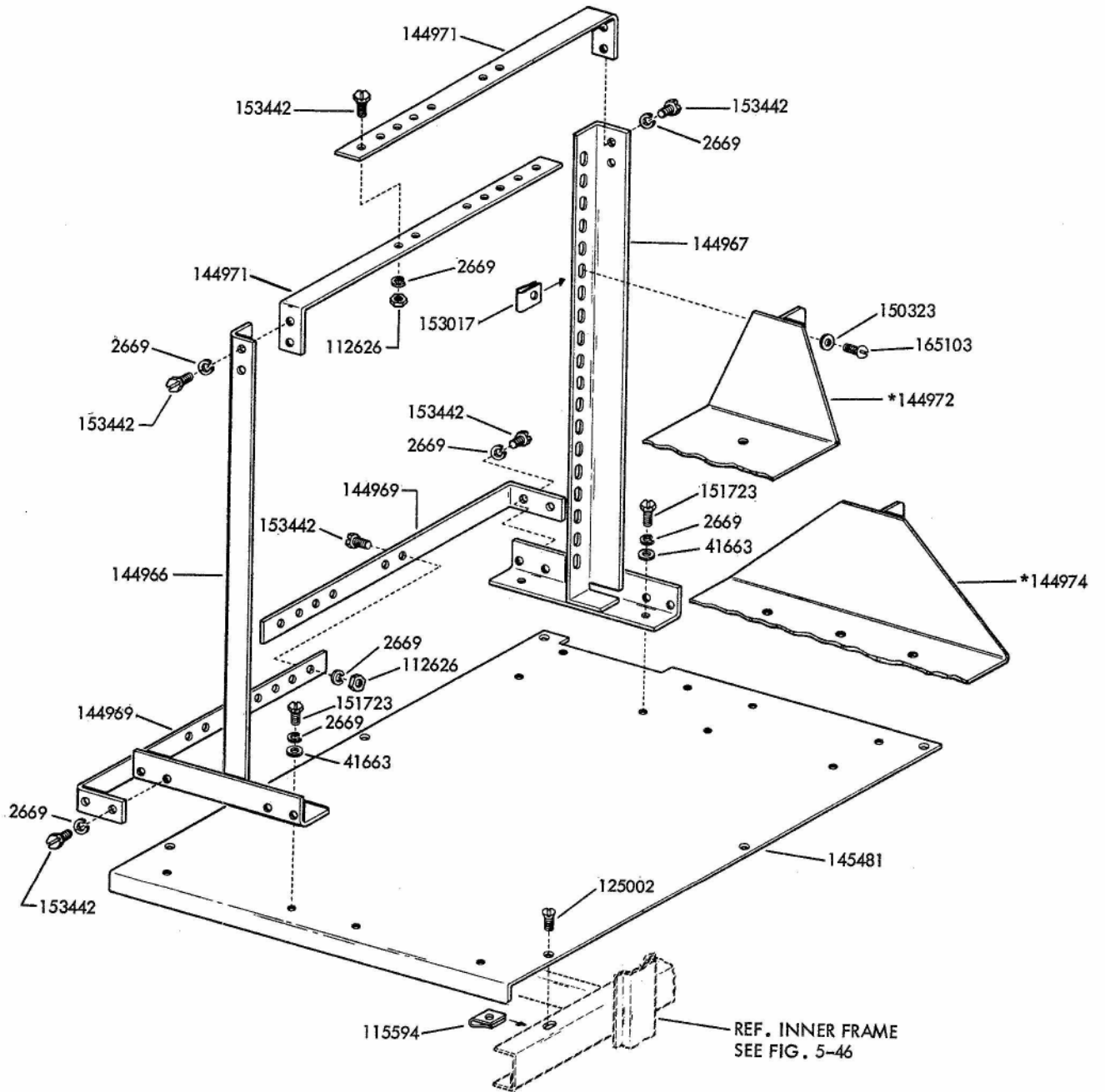


FIGURE 5-50. BASE PLATE ASSEMBLY (LBAC227**)



*Peculiar to LBAC227**

FIGURE 5-51. MOUNTING RACK ASSEMBLY (LBAC227**) AND (LBAC233**)

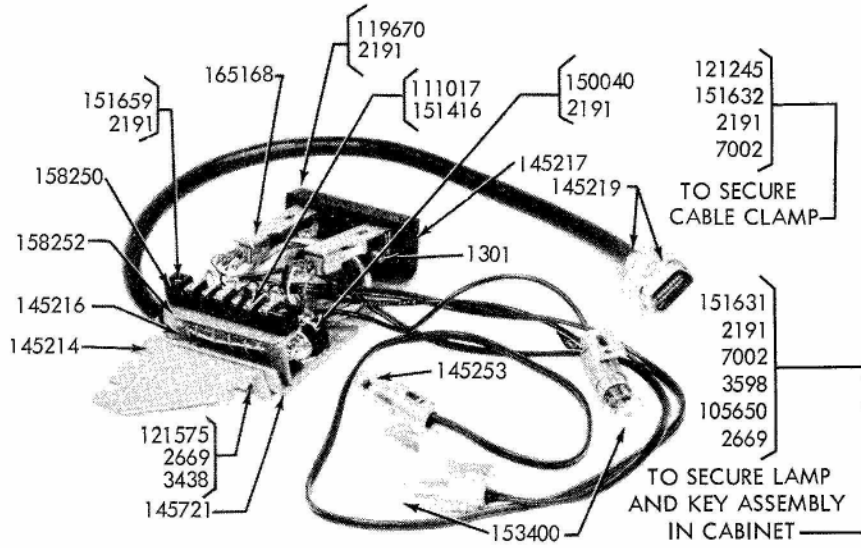


FIGURE 5-52. 145220 MODIFICATION KIT TO PROVIDE KEY AND LAMP ASSEMBLY

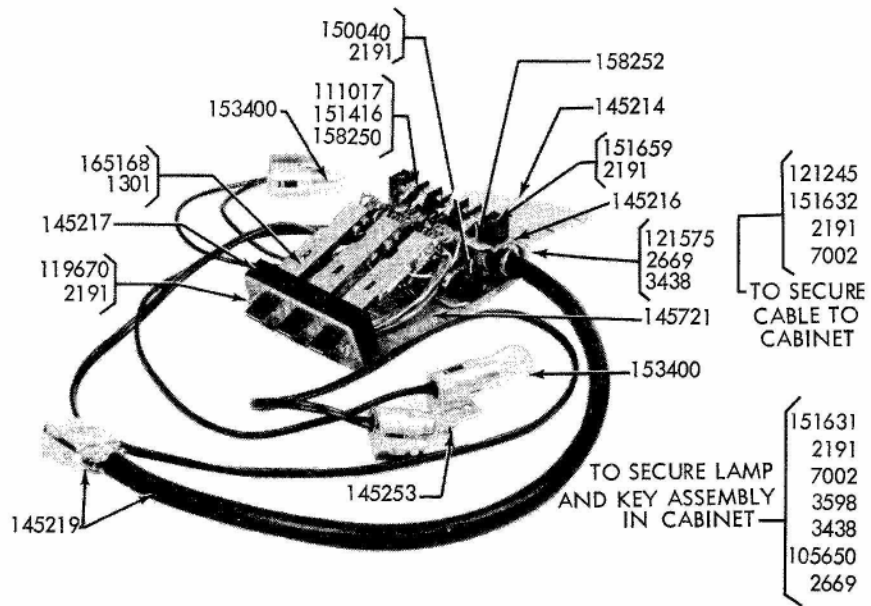
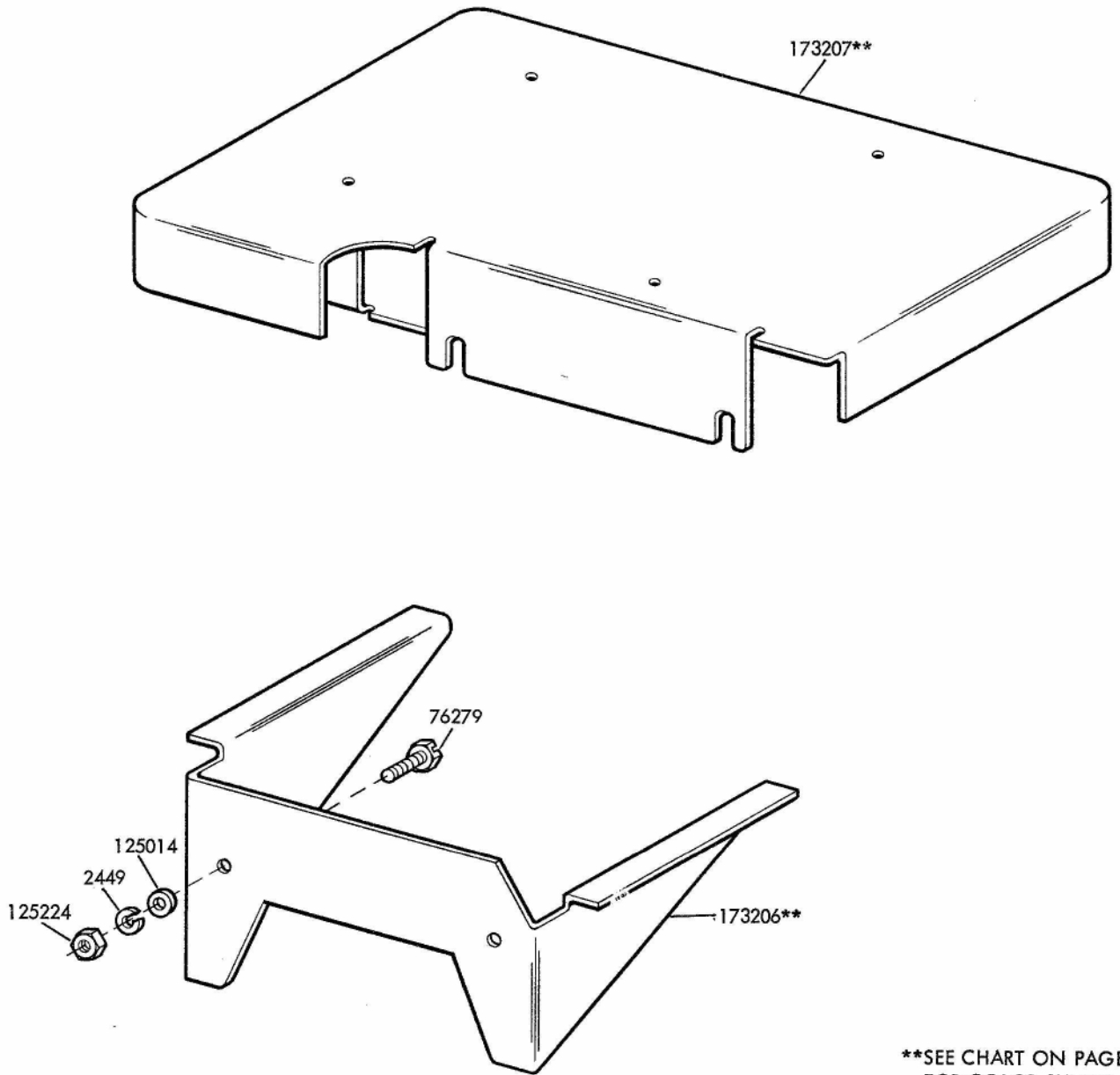
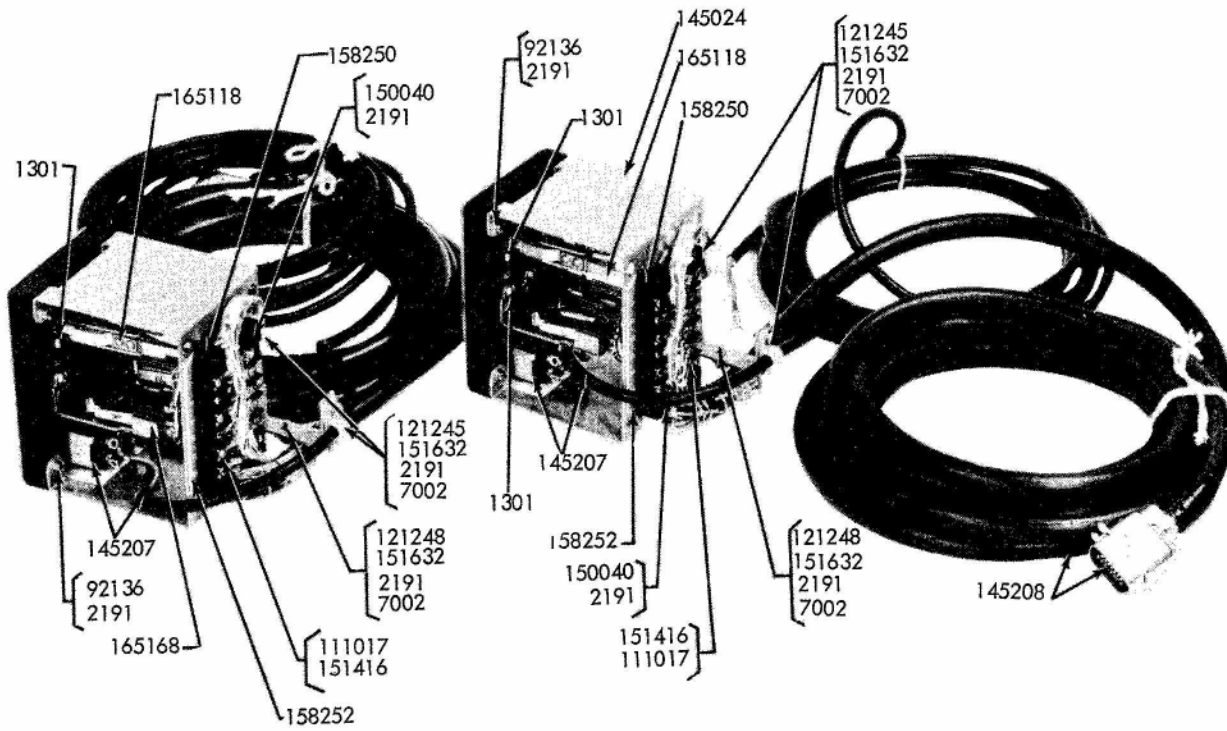


FIGURE 5-53. 144600 MODIFICATION KIT TO PROVIDE KEY AND LAMP ASSEMBLY



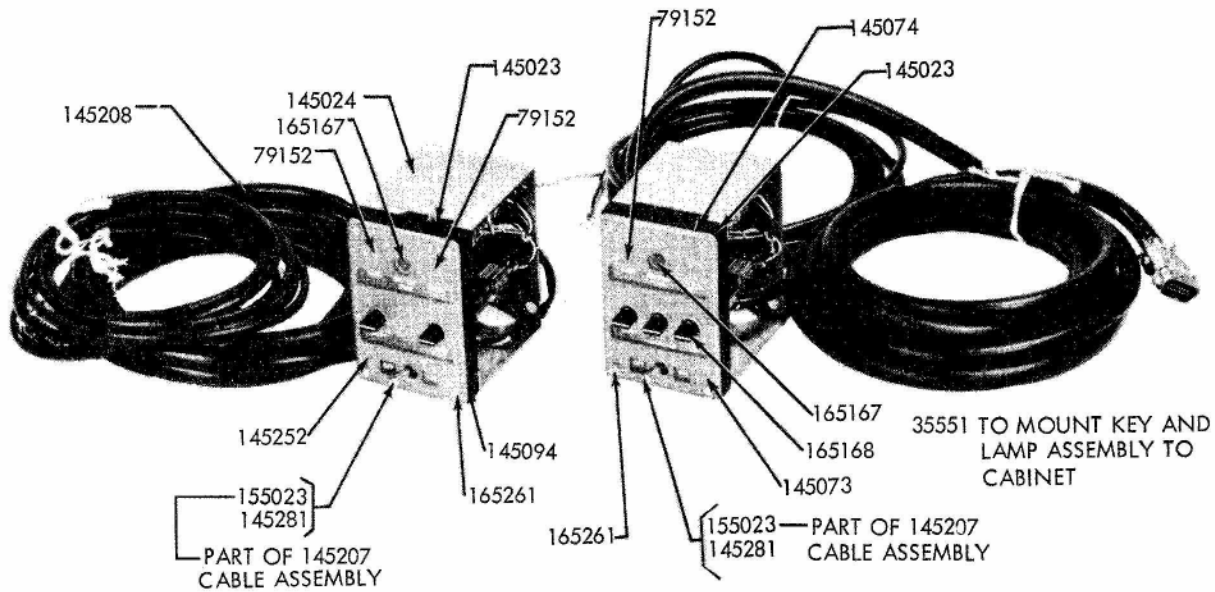
**SEE CHART ON PAGE J
FOR COLOR SUFFIX

FIGURE 5-54. 173097** MODIFICATION KIT TO PROVIDE SHELF FOR CONSOLE CABINET



REAR VIEW

REAR VIEW



FRONT VIEW

FRONT VIEW

FIGURE 5-55. 145450 MODIFICATION KIT TO PROVIDE KEY AND LAMP ASSEMBLY

FIGURE 5-56. 145010 MODIFICATION KIT TO PROVIDE KEY AND LAMP ASSEMBLY

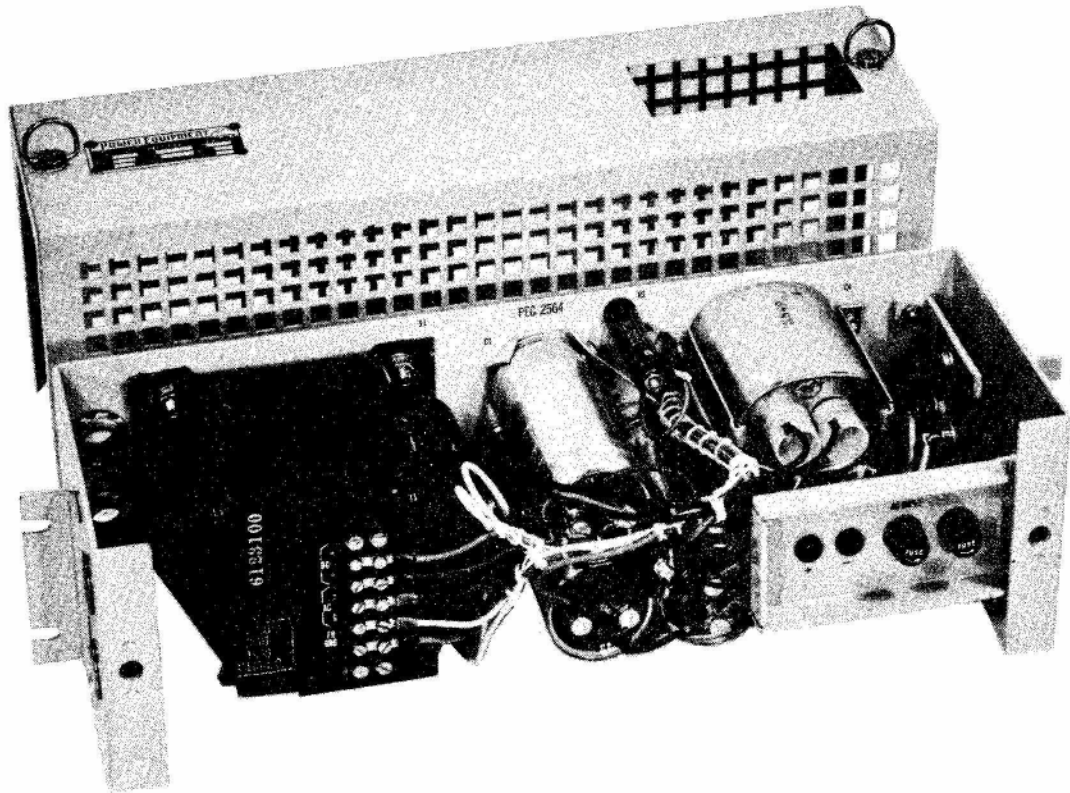


FIGURE 5-57. 145017 RECTIFIER - 48 VOLTS D.C.