

DATASPEED TAPE RECEIVER 5B
SCHEMATIC AND ACTUAL WIRING DIAGRAMS

CONTENTS	PAGE
1. GENERAL	1
2. DIAGRAM INDEX	1

1. GENERAL

1.01 This section provides the schematic diagrams, actual wiring diagrams, interconnecting diagrams, and power distribution diagrams for DATASPEED Tape Receiver 5B. This section is reissued to provide the latest wiring diagrams, circuit cards, and cable diagram for the Tape Receiver 5B. Since this is a

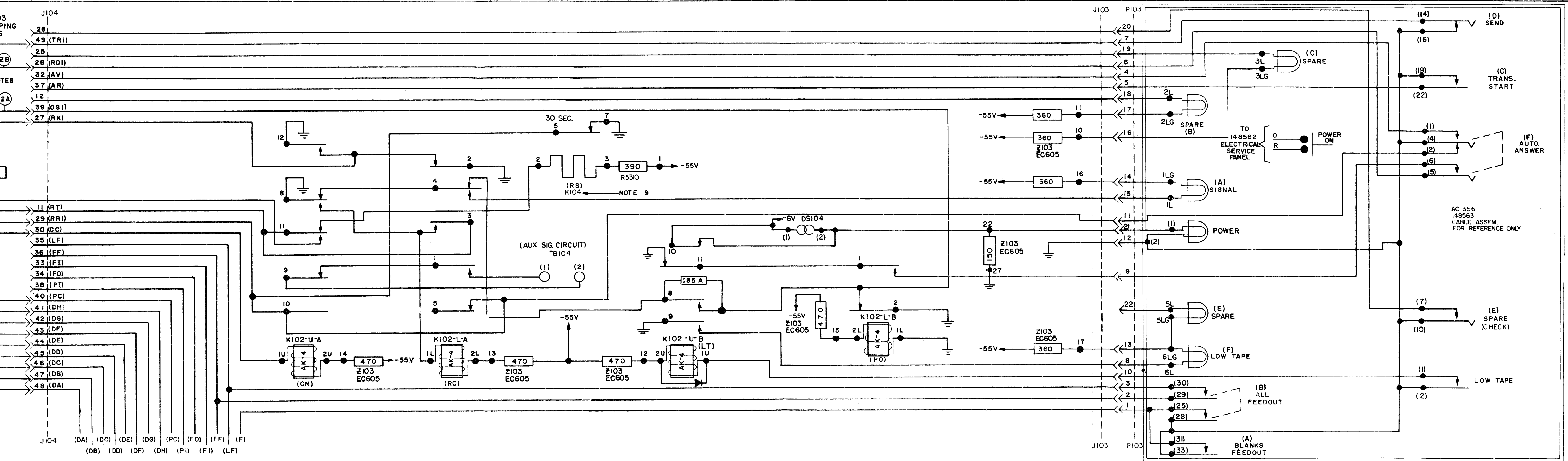
general revision marginal arrows ordinarily used to indicate changes and additions are omitted.

1.02 Refer to related sections for descriptive information. Diagrams concerned with the tape punch are included in a standard tape punch section.

1.03 The attached material consists of Teletype Corporation diagrams. The index (Part 2) lists the title of each diagram, its Teletype identification number, and the issue number.

2. DIAGRAM INDEX

TITLE		DRAWING NUMBER	ISSUE					
			1	2	3	4	5	6
Schematic Wiring Diagram for Receiver Module	Sht 1 Sht 2	6403WD	A	4	9 7			
Actual Wiring Diagram for Receiver Module	Sht 1 Sht 2 Sht 3	6404WD	A	4	8 8 6			
Schematic Wiring Diagram for Power Supply Assembly		6405WD	Orig	Orig	3			
Actual Wiring Diagram for Power Supply Assembly		6406WD	Orig	2	3			
Schematic Wiring Diagram for Receiver Terminals		6411WD			1			
Actual Wiring Diagram for Receiver Terminals		6412WD			2			
Actual Wiring Diagram for Receiver Cabinet		6448WD	Orig	2	2			
Actual Wiring Diagram for Electrical Service Panel		7103WD	Orig	3	3			
Schematic Diagram for DRPE801, 802, 803 and 600		7131WD	Orig	2	3			
Circuit Board EC605 (2 sheets)		303605	2	2	3			
Circuit Board EC675 (2 sheets)		303675	2	4	5			
Circuit Board EC678 (2 sheets)		303678			1			



6403 WD

REVISIONS		
ISSUE	DATE	AUTH. NO.
1	3-24-64	80039
2	8-28-64	85100
3	10-7-64	87000
4	11-3-64	87200
5	11-3-64	87200
6	11-3-64	87200
7	11-3-64	87200
8	4-29-65	86305
9	6-29-65	87243

SHEET 1 OF 2

SCHEMATIC WIRING DIAGRAM FOR TYPE 5 DATA SPEED RECEIVER MODULE VS228
 ASSEM. NO. 199540

APPROVALS
 D AND R: [Signature] E OF M: [Signature]

E-NUMBER: [Blank]
 PROD. NO. 6403 WD
 DATE 9-27-63
 P. D. FILE NO. 1-A143AA
 DRAWN HDS: [Signature]
 ENGR. JH: [Signature] APPD. [Signature]

TELETYPE CORPORATION

6403 WD

NO.	NOTES
REFER TO SHEET 2 OF 2 FOR NOTES.	

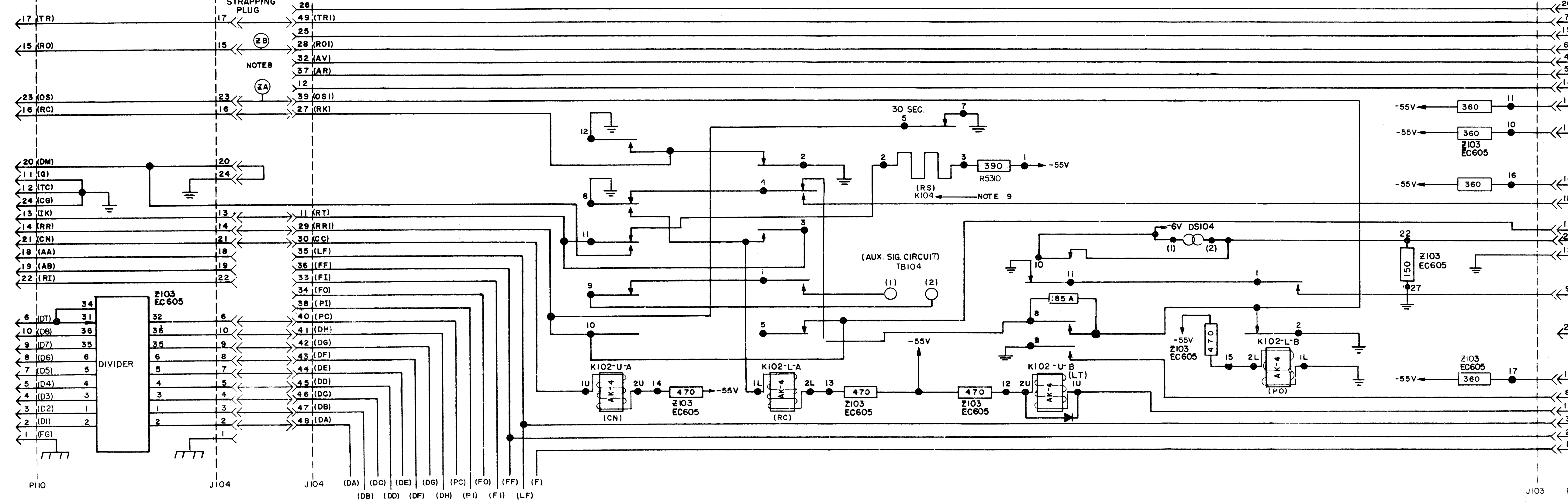
199794 CABLE ASSEM.
P110

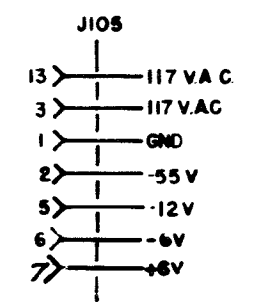
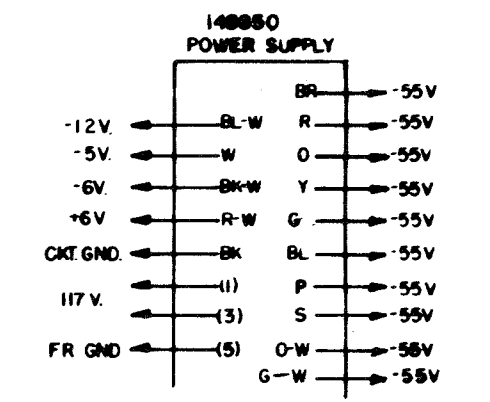
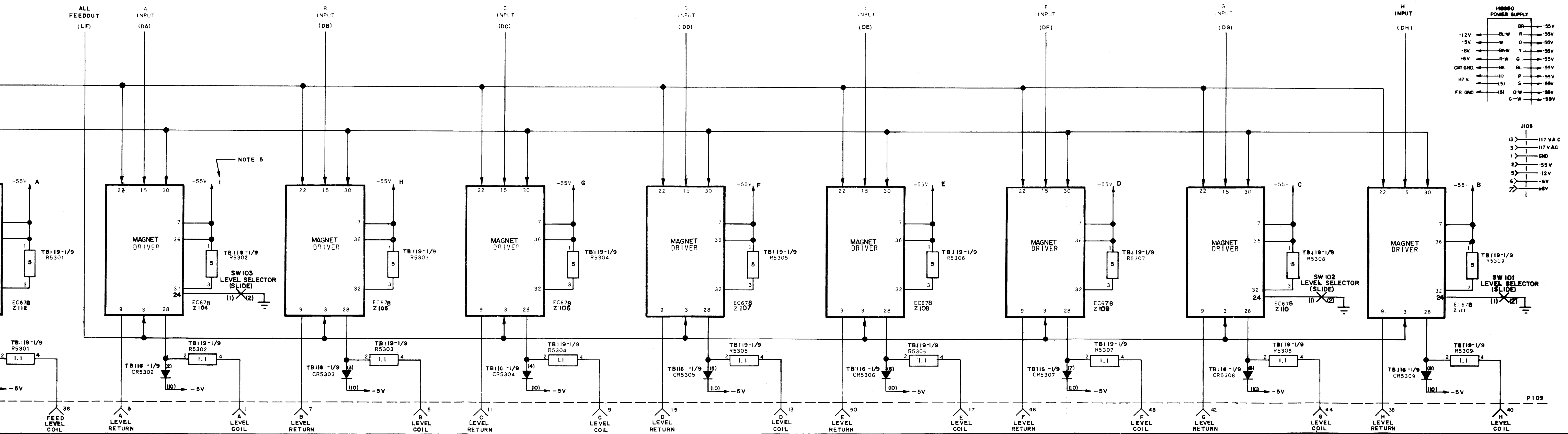
J104
199793 STRAPPING PLUG

J104

J103
P103

TO DATA SET





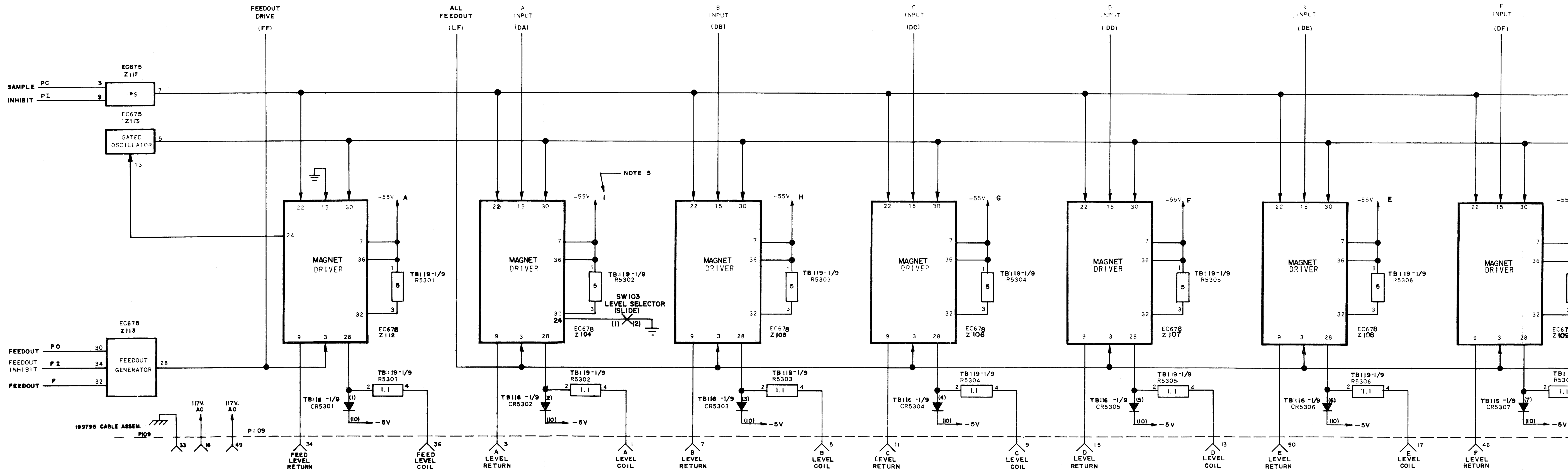
SCHEMATIC
WIRING DIAGRAM
FOR
TYPE 5
DATA SPEED RECEIVER
MODULE
(VS 225)

ASSEM. NO. 199540

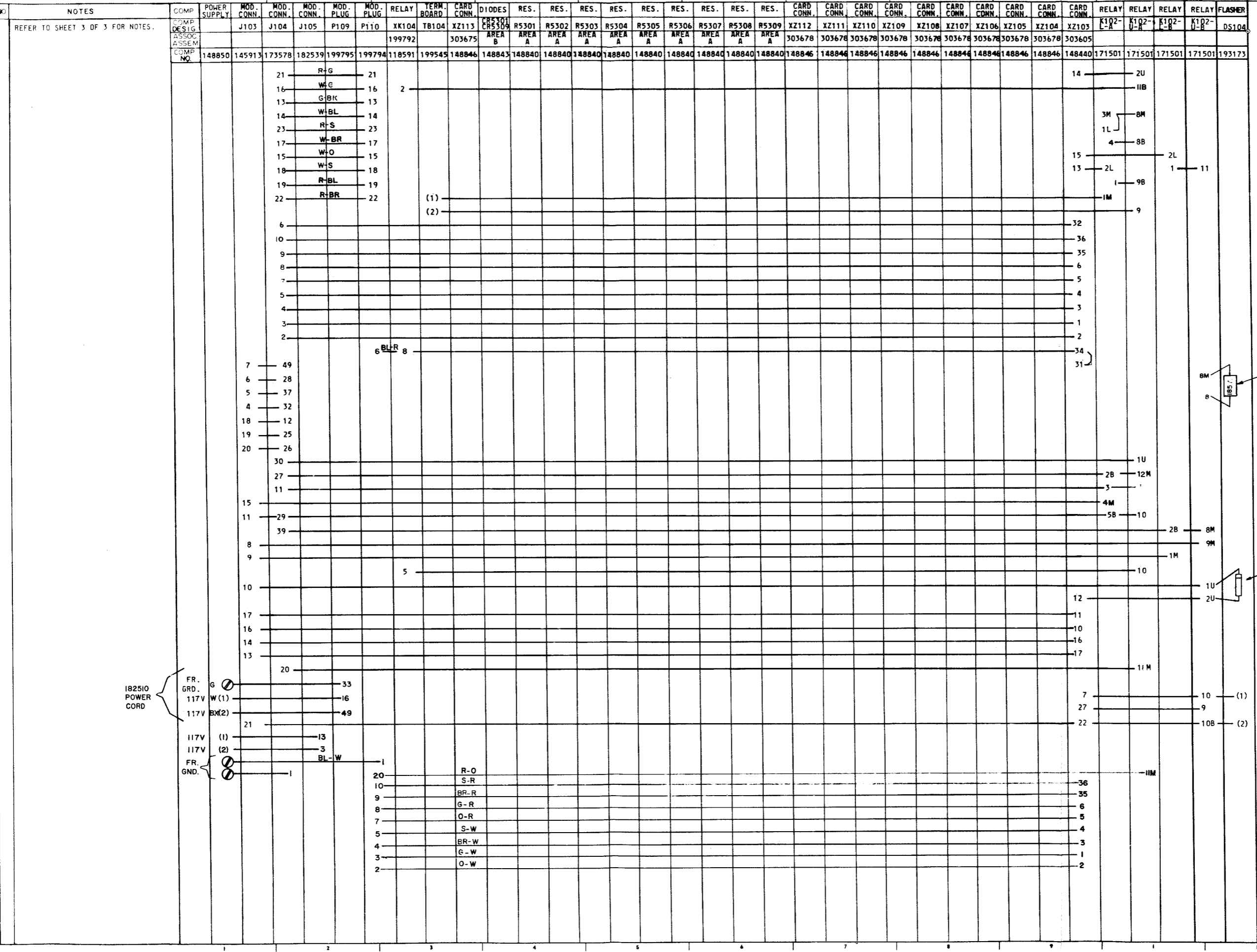
APPROVALS

DATE 9-24-63
P.D. FILE NO 1-A143AA
DRAWN A.H.P. CHRD
ENGR. E.W.S. APD

NO	NOTES
1	REFER TO 6404W FOR ACTUAL WIRING DIAGRAM.
2	ALL VOLTAGES DC, UNLESS OTHERWISE SPECIFIED.
3	TERMINAL DESIGNATIONS ENCLOSED IN PARENTHESIS ARE FOR REFERENCE AND NOT MARKED ON COMPONENT.
4	ALL RESISTORS 35 WATT AND RESISTANCE VALUE IN OHMS UNLESS OTHERWISE SPECIFIED.
5	INDICATES TERMINAL ON POWER SUPPLY.
6	REFER TO SPECIFICATION FOR ADJUSTMENT OF VARIABLE TIMING CIRCUITS.
7	ZA & ZB WIRING ARE FURNISHED. REMOVE ZA WIRING EXCEPT FOR SERVICE ON INCOMING-ONLY LINES OF ROTARY HUNTING GROUPS. REMOVE ZB WIRING IF AUTOMATIC ANSWER IS NOT TO BE USED.
8	HERMAL DELAY RELAY (30 SEC.)



ISSUE	DATE	AUTH. NO.
2	3-23-64	80039
3	8-28-64	83084
4	10-7-64	84000
5	11-3-64	84263
7	11-20-64	84989
8	2-19-65	86191



ACTUAL WIRING DIAGRAM FOR TYPE 5 DATA SPEED RECEIVER MODULE VS228 ASSEM. NO. 199540

APPROVALS

D AND R	E OF M
<i>[Signature]</i>	<i>[Signature]</i>

E-NUMBER

PROD. NO. 6404WD

DATE 11-28-63

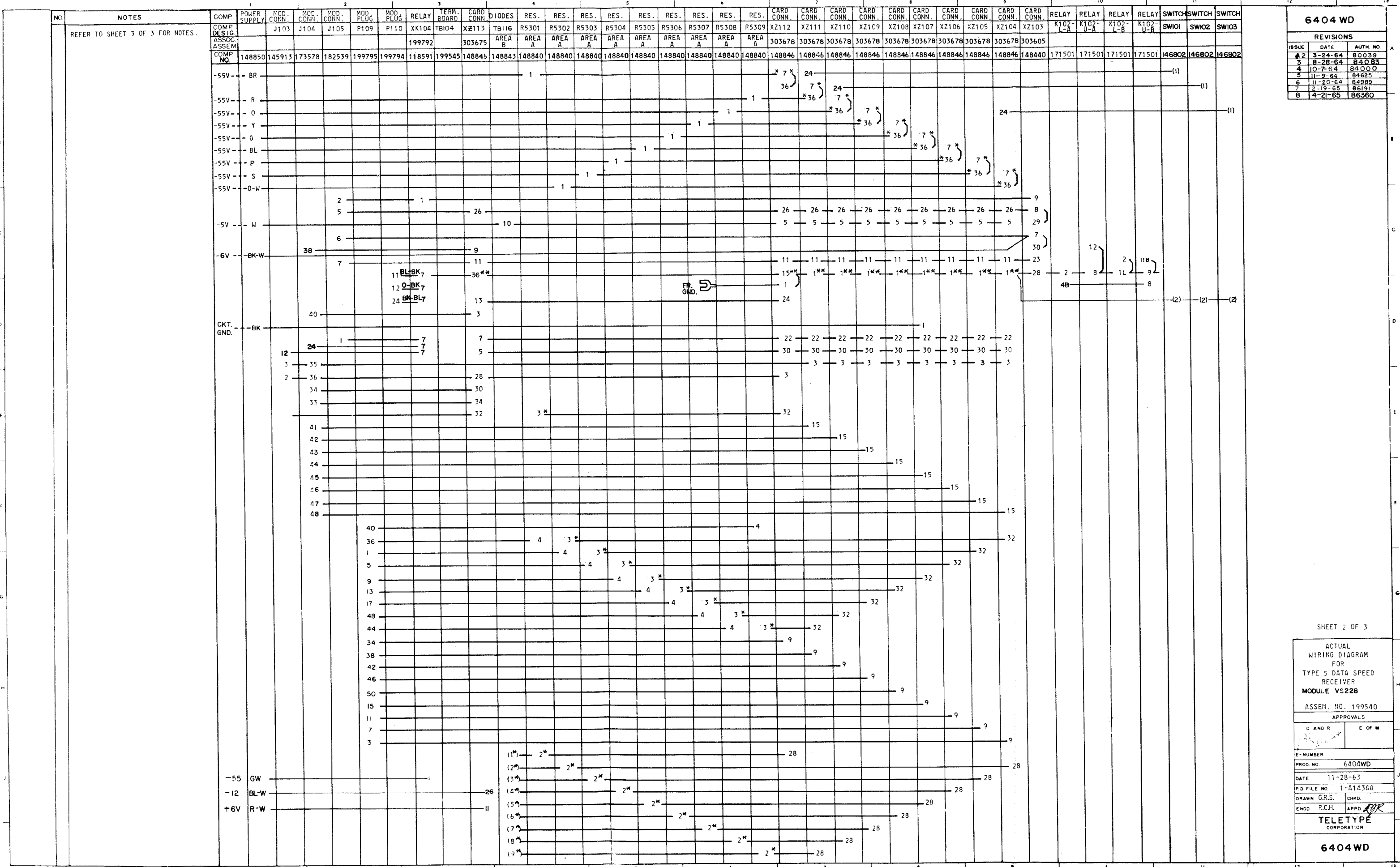
P.D. FILE NO. 1-A143AA

DRAWN G.R.S. CHKD.

ENGD R.C.H. APPD. *[Signature]*

TELETYPE CORPORATION

6404WD



6404 WD		
REVISIONS		
ISSUE	DATE	AUTH. NO.
2	3-24-64	80039
3	8-28-64	84083
4	10-7-64	84000
5	11-9-64	84825
6	11-20-64	84989
7	2-19-65	86191
8	4-21-65	86360

SHEET 2 OF 3

ACTUAL
WIRING DIAGRAM
FOR
TYPE 5 DATA SPEED
RECEIVER
MODULE VS228

ASSEM. NO. 199540

APPROVALS

D AND R	E OF M
---------	--------

E-NUMBER

PROD. NO. 6404WD

DATE 11-28-63

P.D. FILE NO. 1-A143AA

DRAWN G.R.S.	CHKD.
ENGD R.C.H.	APPD. <i>ARK</i>

TELETYPE CORPORATION

6404WD

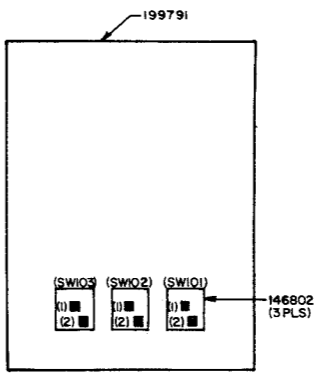
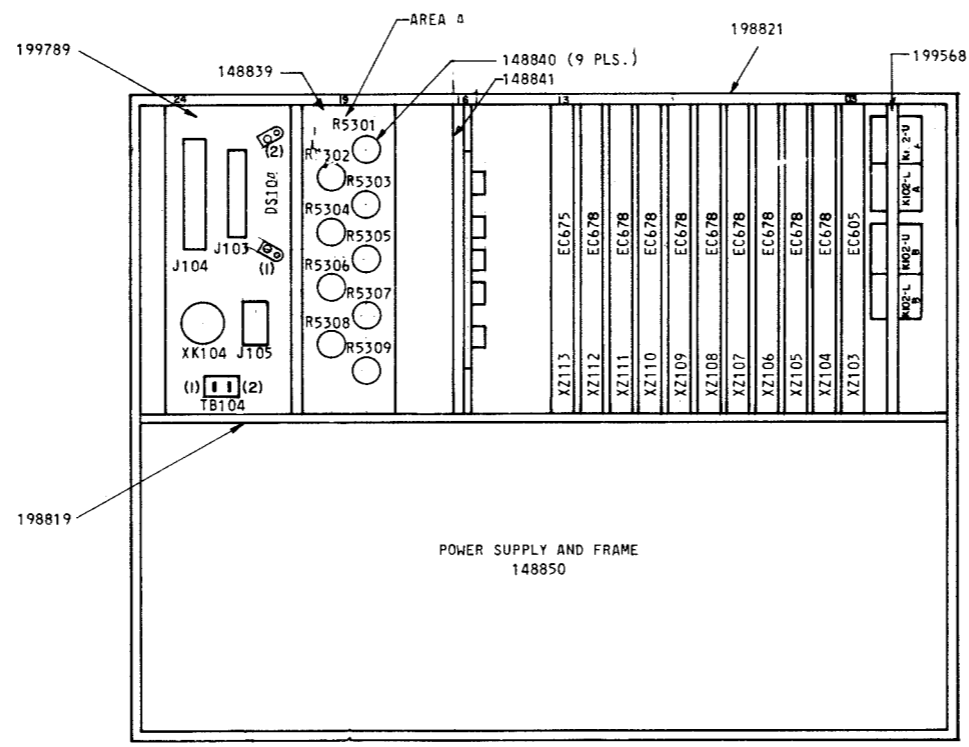
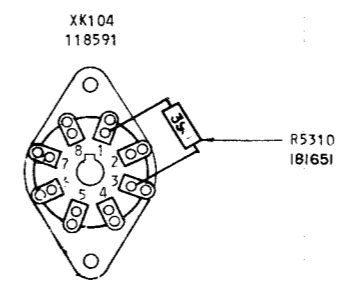
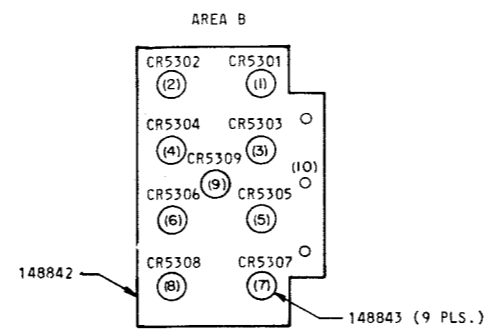
6404 WD

REVISIONS

ISSUE	DATE	AUTH. NO.
2	3-23-64	80039
3	8-28-64	83084
4	2-19-65	86191
5	4-21-65	86360
6	6-29-65	88013

- NOTES
- REFER TO 6403WD FOR SCHEMATIC.
 - ALL VOLTAGES DC, UNLESS OTHERWISE SPECIFIED.
 - TERMINAL DESIGNATIONS ENCLOSED IN PARENTHESES ARE NOT MARKED ON THE COMPONENT.
 - ALL SURFACE WIRE 24 GA GREEN, 31784RM, UNLESS OTHERWISE SPECIFIED.
 - ALL STRAPPING WIRE 24 GA BARE, 39603RM. USE SLEEVING WHERE REQUIRED. DO NOT PULL TAUT BETWEEN TERMINALS.
 - INSERT CARDS BEFORE WIRING MODULE.
 - * INDICATES 18 AWG WIRE RM 31883-GR
** INDICATES 18 AWG WIRE RM 31880-BK
 - RUBBER STAMP .125 CHARACTERS ON THE CARDS OF THE FOLLOWING RELAYS IN WHITE INK.

RELAY	STAMPING
K102-U-A	CN
K102-L-A	RC
K102-U-B	LT
K102-L-B	PO



VIEWED FROM WIRING SIDE

SHEET 3 OF 3

ACTUAL WIRING DIAGRAM FOR TYPE 5 DATA SPEED RECEIVER MODULE VS22B

ASSEM. NO. 199540

APPROVALS

D AND R	E OF M
---------	--------

E-NUMBER

PROD. NO. 6404 WD

DATE 11-28-63

P.D. FILE NO. 1-A143AA

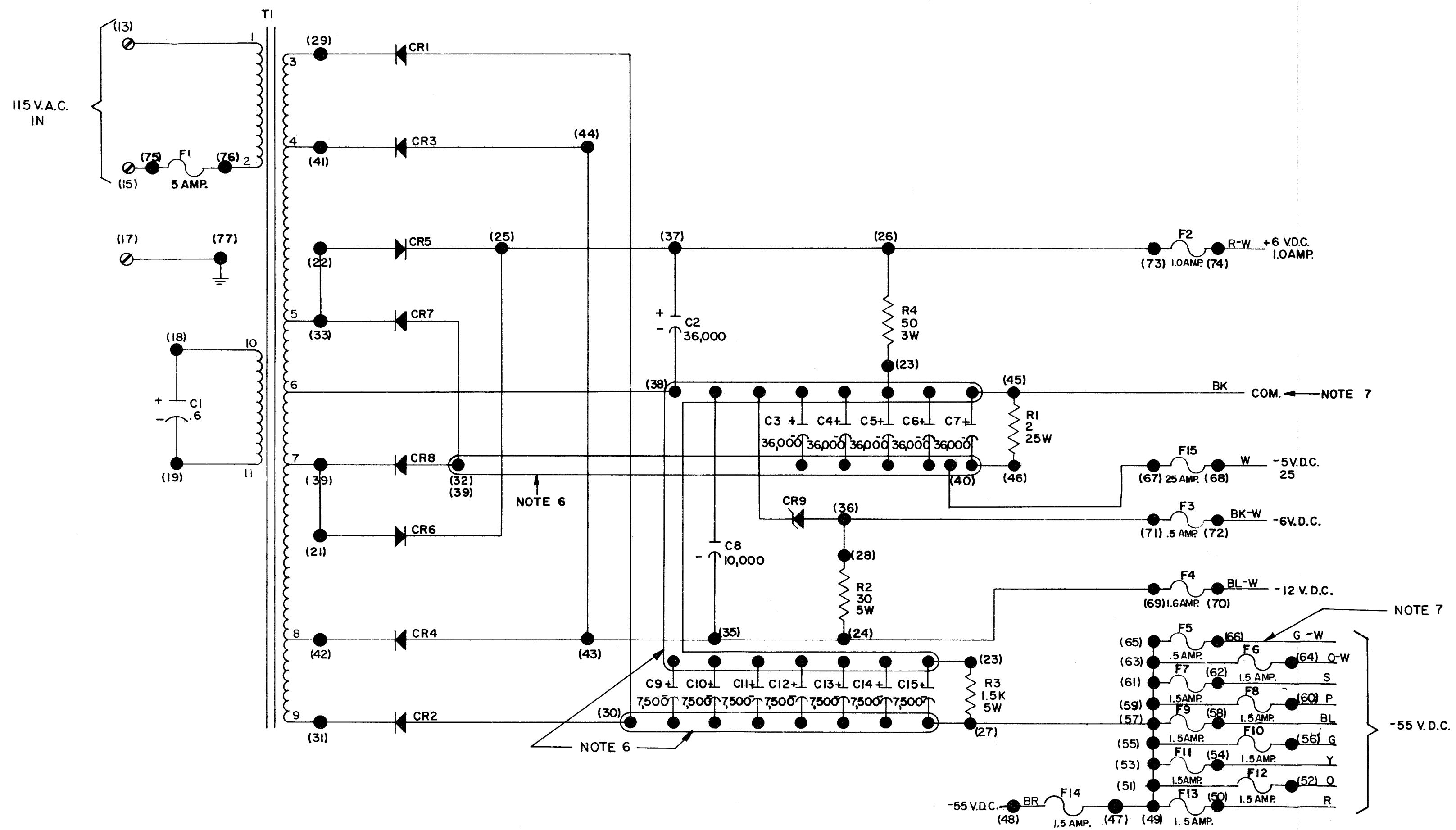
DRAWN G.R.S. CHKD. *[initials]*

ENGD. R.C.H. APPD. *[initials]*

TELETYPE CORPORATION

6404 WD

NO.	NOTES
1.	REFER TO 6406 WD FOR ACTUAL WIRING DIAGRAM.
2.	ALL VOLTAGES DC UNLESS OTHERWISE SPECIFIED.
3.	TERMINAL DESIGNATIONS ENCLOSED IN PAREN- THESE ARE FOR REFERENCE AND NOT MARKED ON COMPONENT.
4.	ALL RESISTANCE VALUES IN OHMS.
5.	ALL CAPACITOR VALUES IN MICRO FARADS UNLESS OTHERWISE SPECIFIED
6.	INDICATES SHORTING PLATES
7.	15 VOLTAGE LEADS WHICH WILL BE CONNECTED INTERNAL TO THE MODULE.
8.	REFER TO 148850-52 FOR ASSEMBLY DRAWING.



6405 WD		
REVISIONS		
ISSUE	DATE	AUTH. NO.
1	11-25-64	84989
3	6-3-65	87445

SCHMATIC WIRING DIAGRAM FOR HSPUC POWER SUPPLY. ASSEM NO. 148850-52

APPROVALS

DAWR EOPM

E. NUMBER

PROD. NO. 6405 WD

DATE 11-25-63

RD. FILE NO 1-A143AA

DRAWN G.R.S. CHKD

ENGR R.C.A. APPD

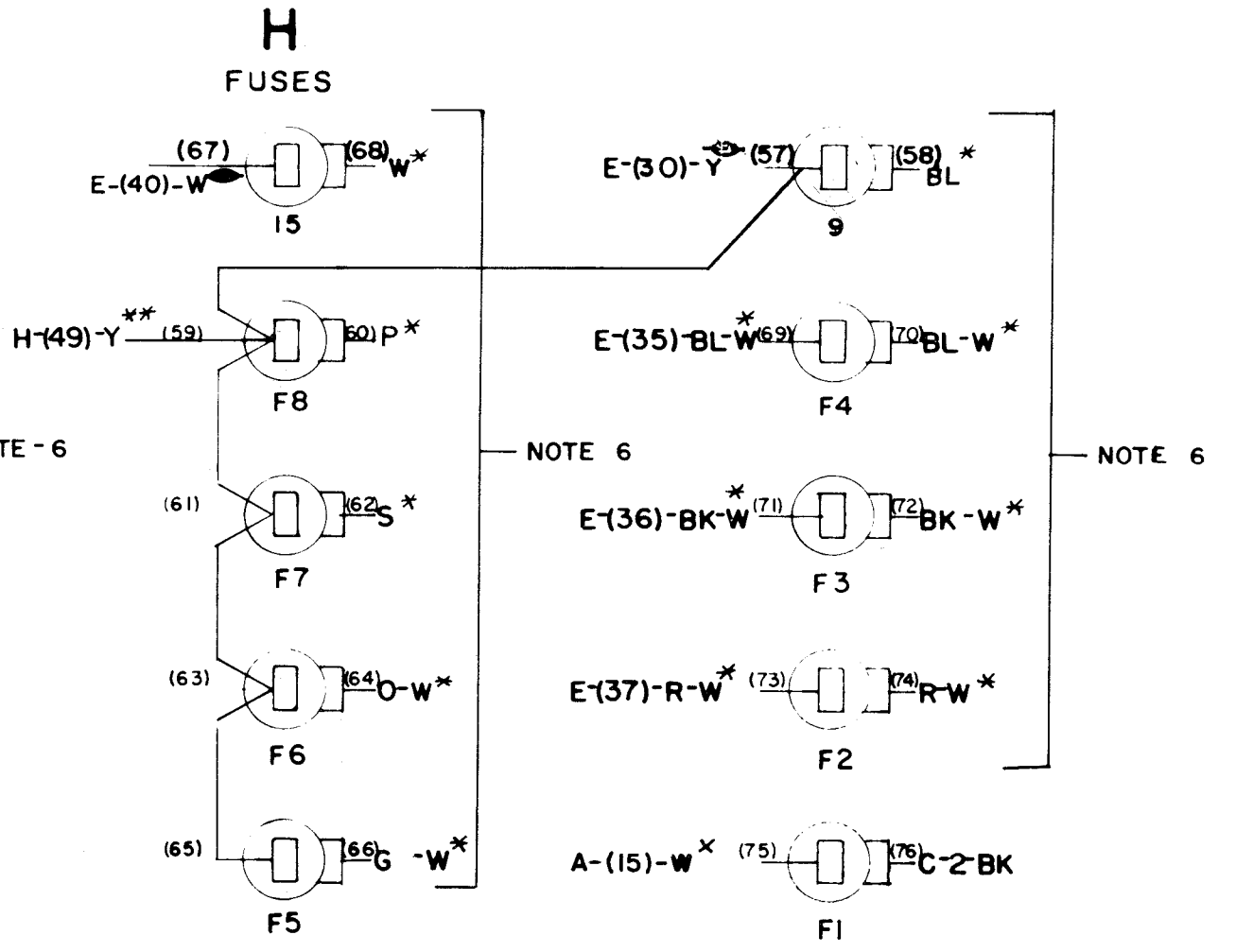
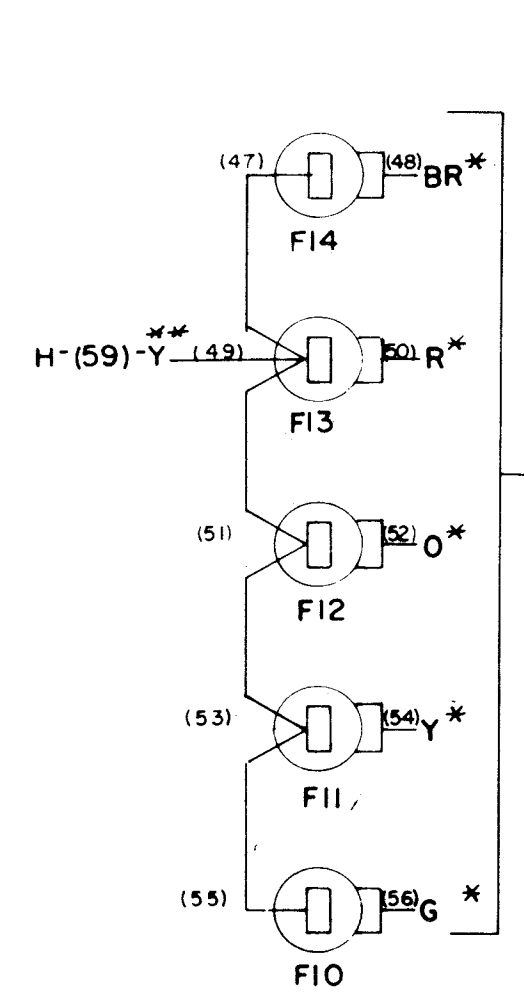
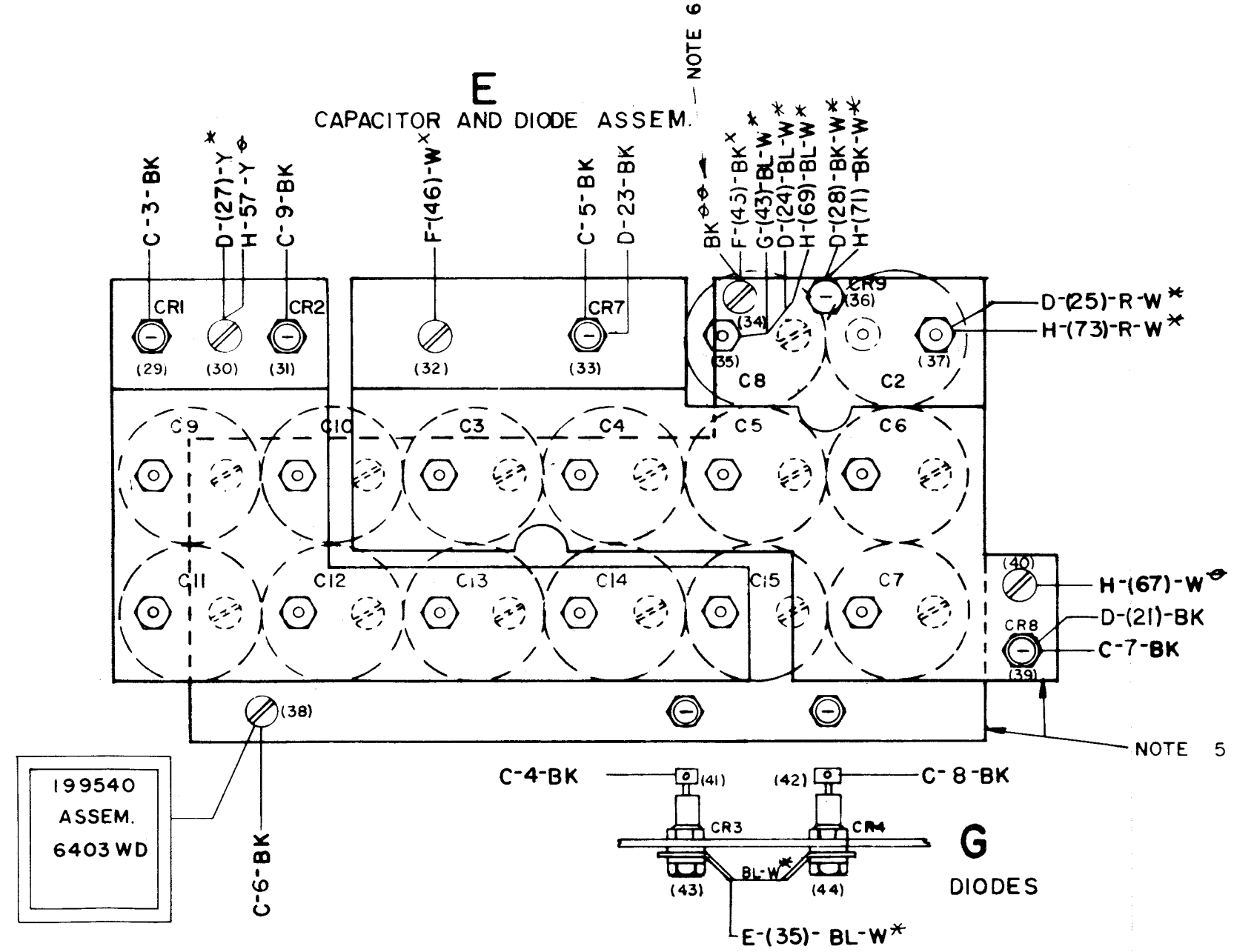
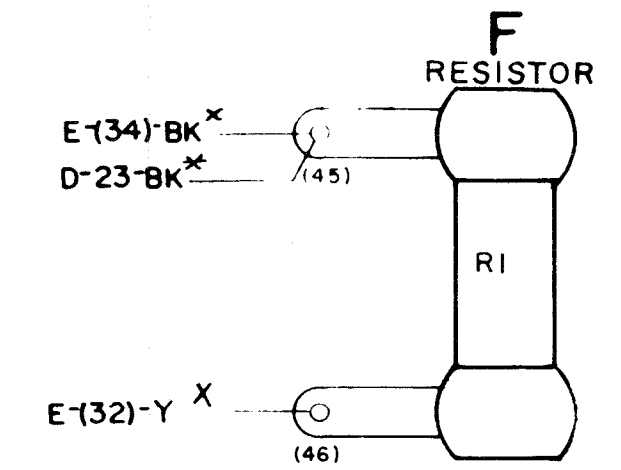
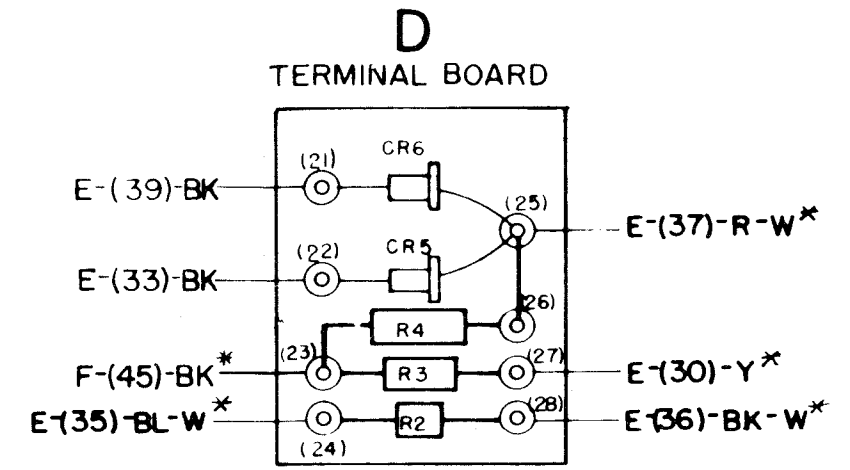
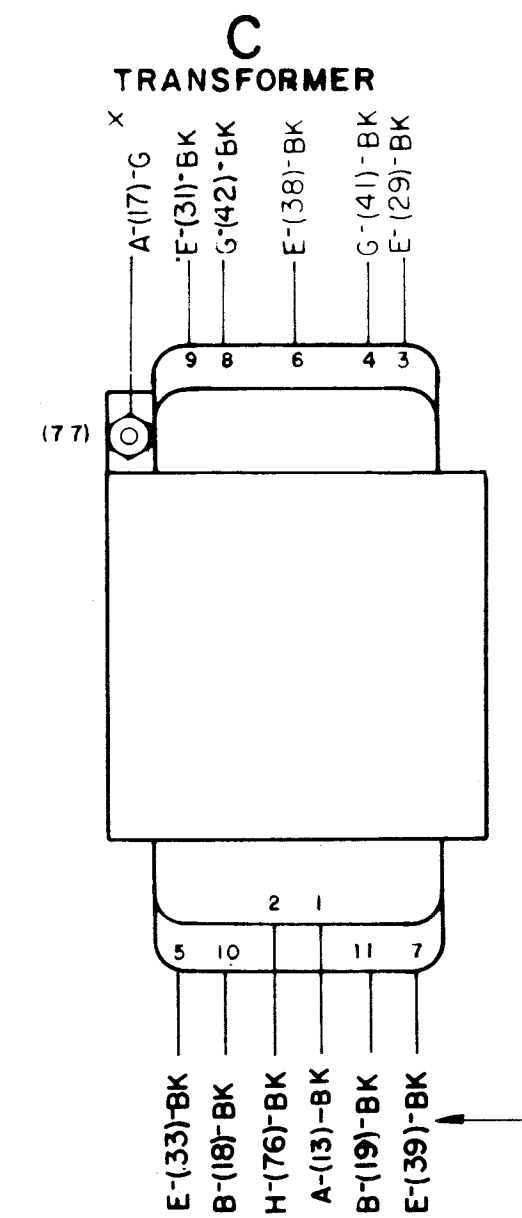
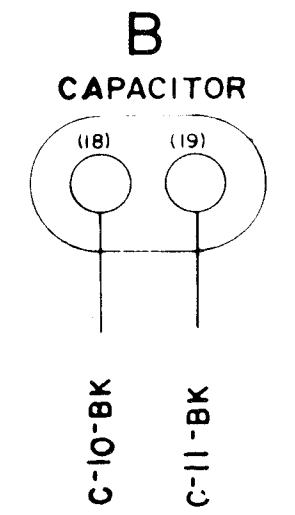
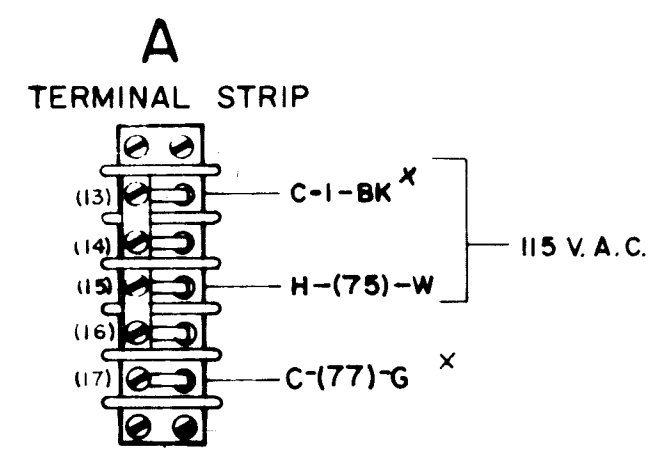
TELETYPE CORPORATION

6405 WD

AREA
DESIGNATION

SCHEMATIC.
CLOSED IN PARENTHESES
MARKED ON COMPONENT.
DS, WIRED POINT TO

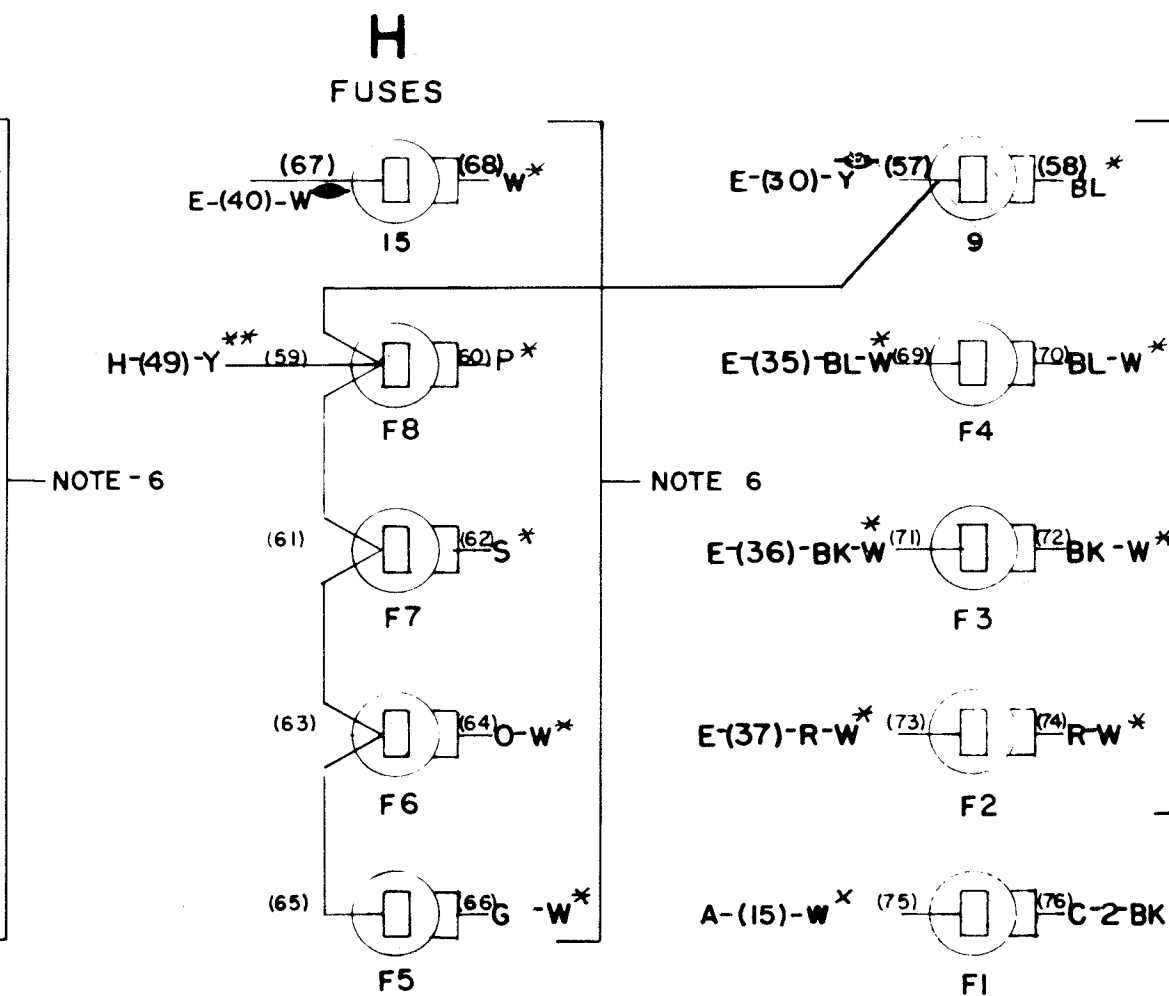
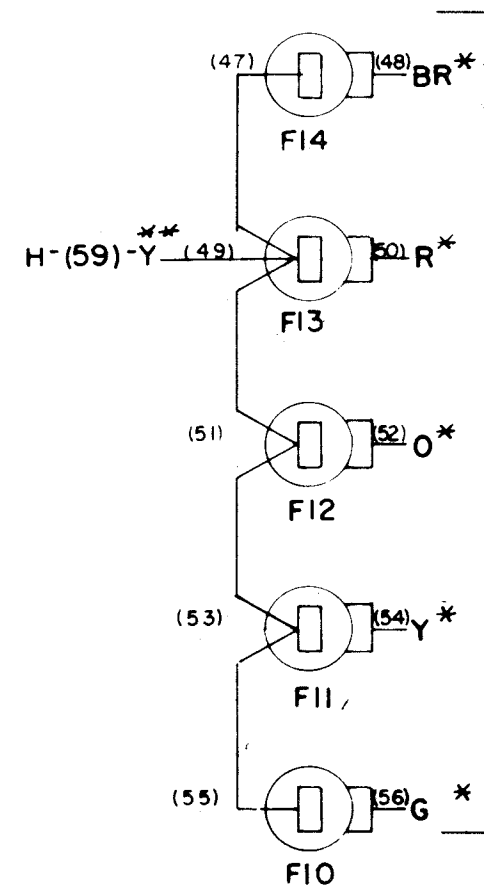
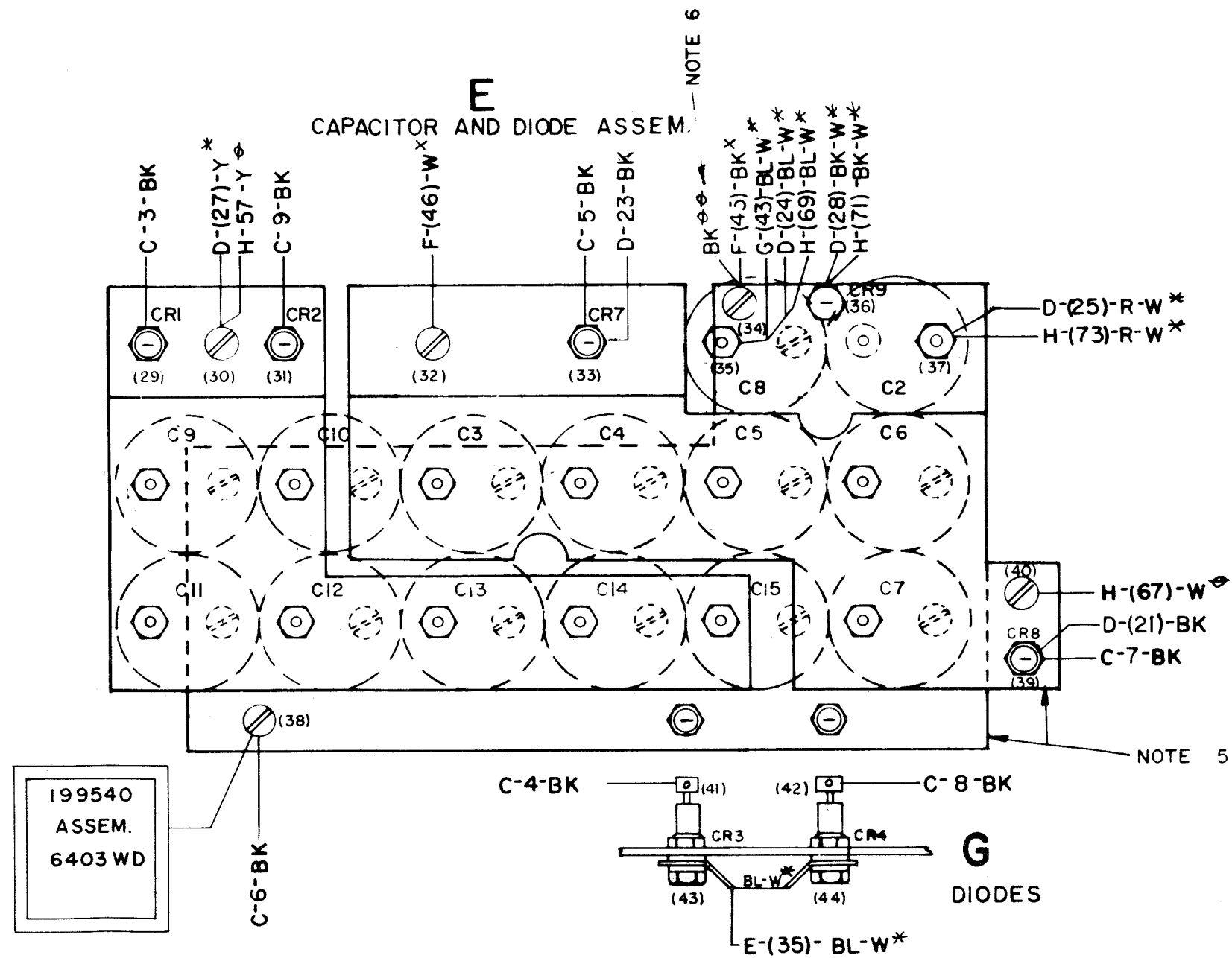
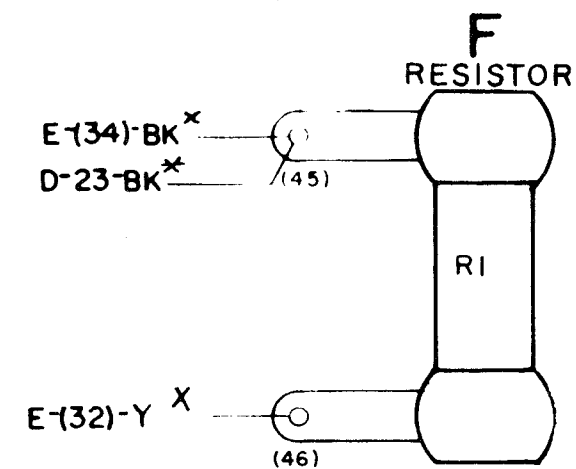
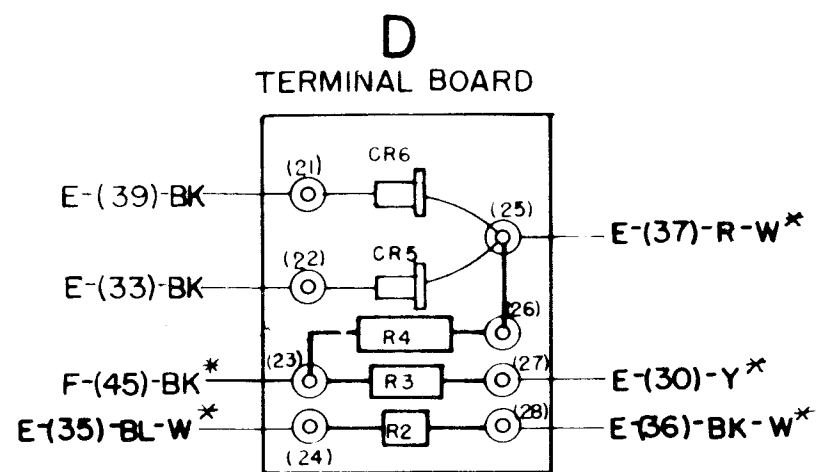
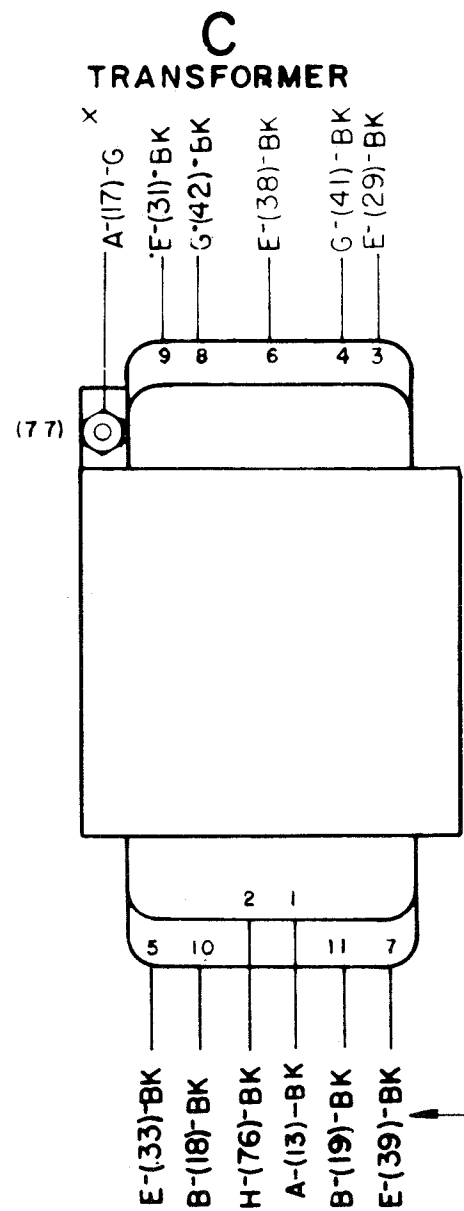
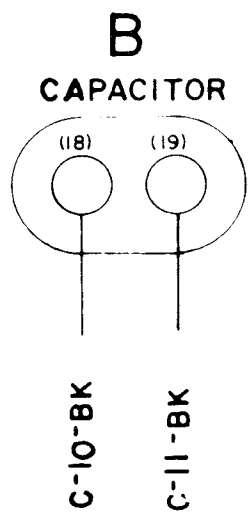
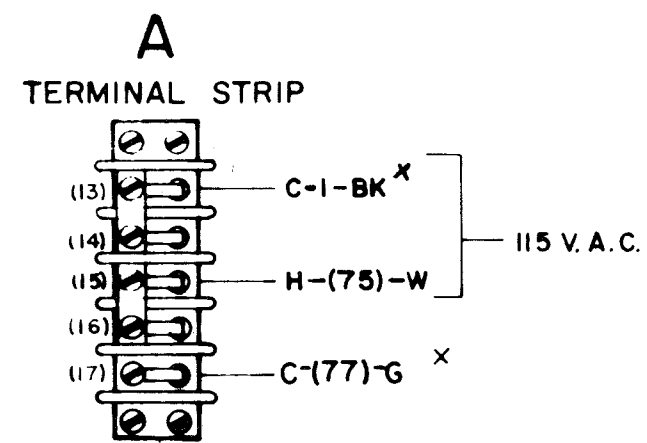
4, 56, 58, 60, 62, 64, 66,
S
CABLE



6406 WD		
REVISIONS		
ISSUE	DATE	AUTH NO.
2	10-7-64	84000
3	11-20-64	84989

ACTUAL WIRING DIAGRAM FOR HISUPUC POWER SUPPLY	
ASSEM. NO. 148850-52	
APPROVALS	
D AND R	E OF M
E-NUMBER	
PROD NO 6406 WD	
DATE 11-29-63	
PD FILE NO I-A143AA	
DRAWN G.R.S.	CHKD
ENGR R.C.H.	APPD R.V.Z.
TELETYPE CORPORATION	
6406 WD	

NO	NOTES
1	WIRING LEGEND DISTANT TERMINATING AREA DISTANT TERMINATING DESIGNATION WIRE COLOR CODE R-12-BL
2	REFER TO 6405WD FOR SCHEMATIC.
3	TERMINAL DESIGNATIONS ENCLOSED IN PARENTHESES ARE FOR REFERENCE AND NOT MARKED ON COMPONENT.
4	LEADS 1-11 ARE FERRO LEADS, WIRED POINT TO POINT
5	SHORTING PLATES
6	TERMINALS, 34, 48, 50, 52, 54, 56, 58, 60, 62, 64, 66, 68, 70, 72, 74, HAVE LEADS WHICH MAKE UP THE OUTPUT CABLE
7	WIRE GAUGE O-9 = 10 GAUGE O-12 = 12 GAUGE * = 14 GAUGE XX = 16 GAUGE * = 18 GAUGE



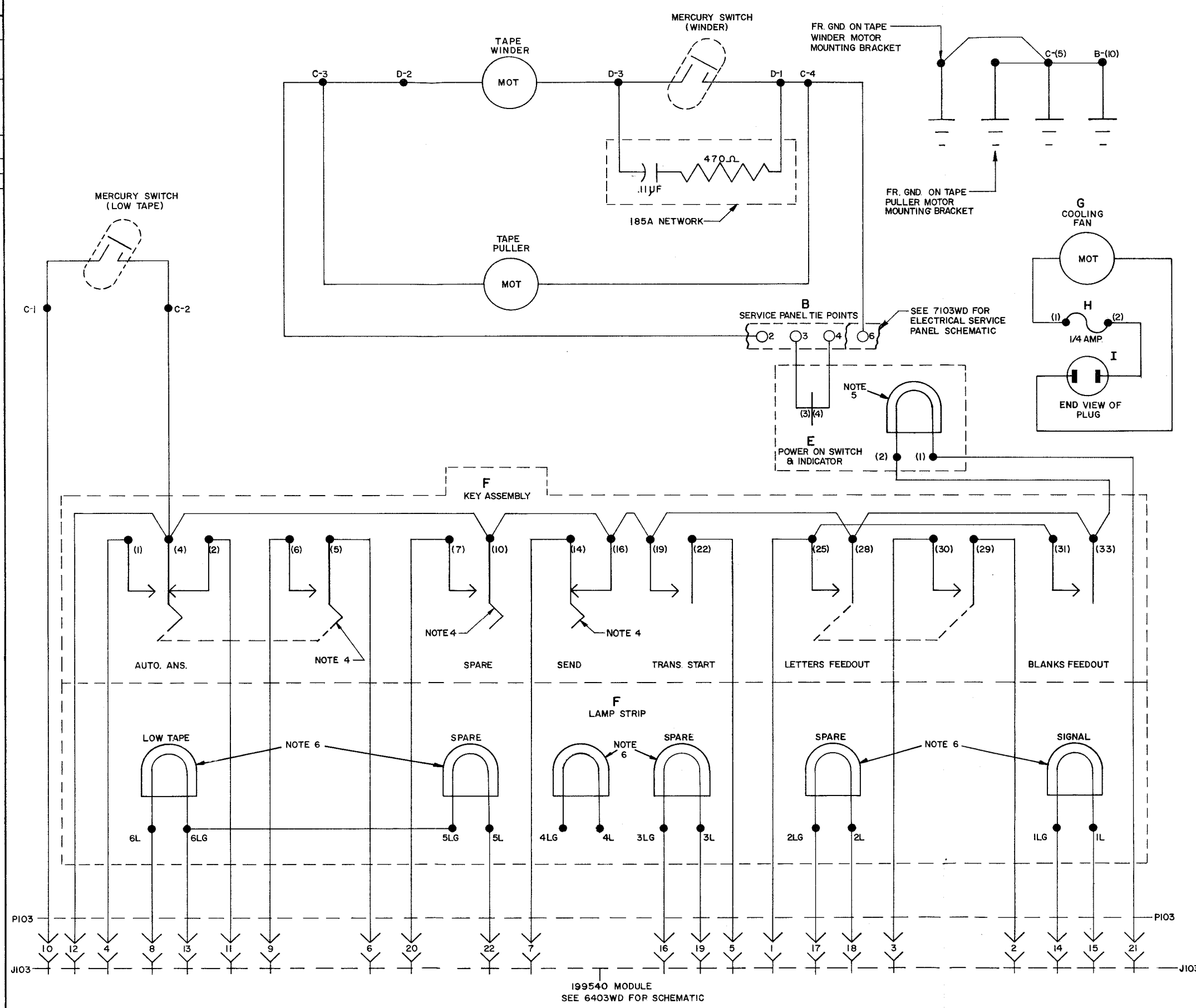
199540
ASSEM.
6403 WD

6411 WD

REVISIONS

ISSUE	DATE	AUTH. NO.
1	2-22-65	16407-R

- NO. NOTES
- REFER TO 6412WD FOR ACTUAL WIRING DIAGRAM.
 - TERMINAL DESIGNATIONS IN PARENTHESIS () ARE FOR REFERENCE ONLY AND NOT MARKED ON COMPONENTS.
 - ← INDICATES TERMINALS ON MALE PLUG PI03.
 - INDICATES TERMINALS ON FEMALE PLUG J103.
 - INDICATES LOCKING TYPE PUSH BUTTON SWITCH (3-PL'S)
 - WHITE LAMP +6V.
 - WHITE LAMP +48V.



SCHEMATIC WIRING DIAGRAM FOR AC356 DATA SPEED RECEIVER TERMINAL

APPROVALS

D AND R <i>HJK</i>	E OF M <i>[Signature]</i>
-----------------------	------------------------------

E-NUMBER
PROD. NO. 6411WD

DATE 12-15-64

P.D. FILE NO. 1-A143AA

DRAWN G.R.S. CHKD. *Mam*

ENGD. R.C.H. APPD. *[Signature]*

TELETYPE CORPORATION

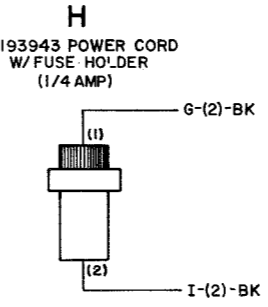
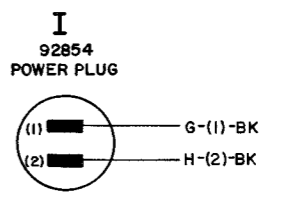
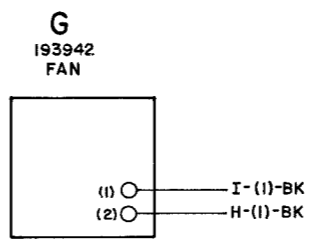
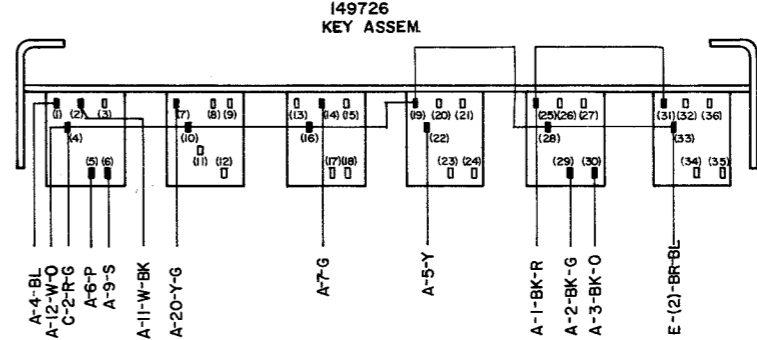
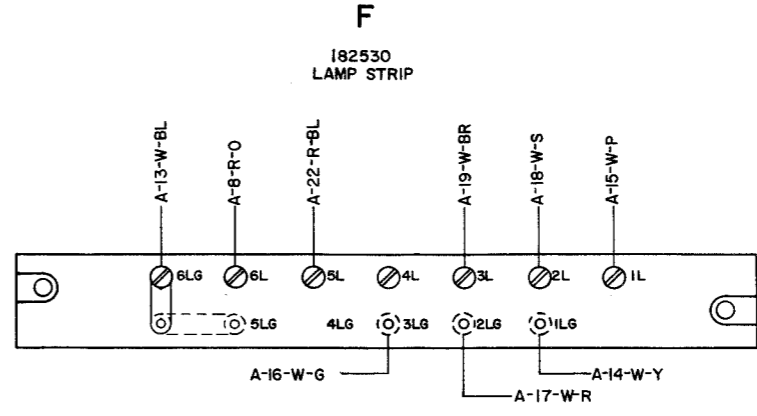
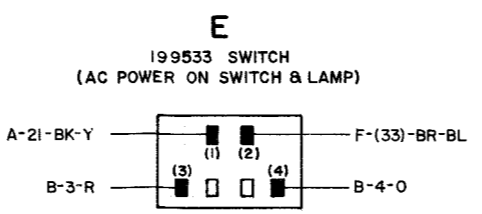
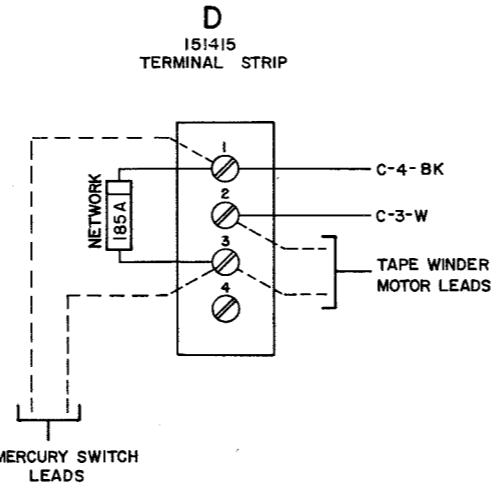
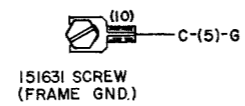
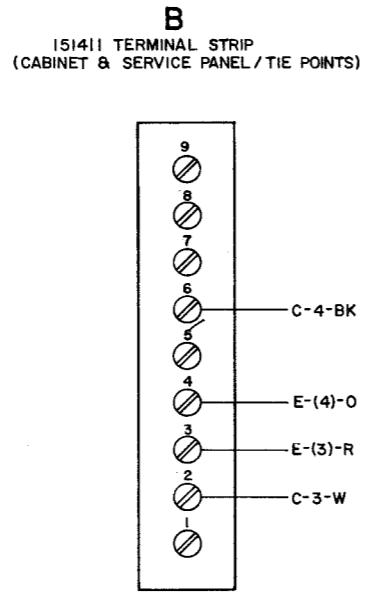
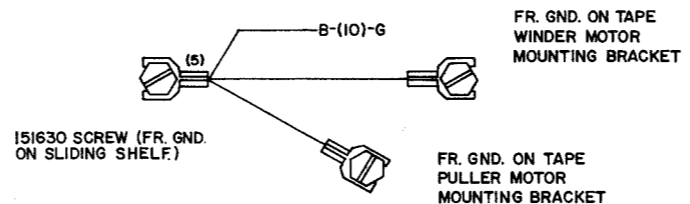
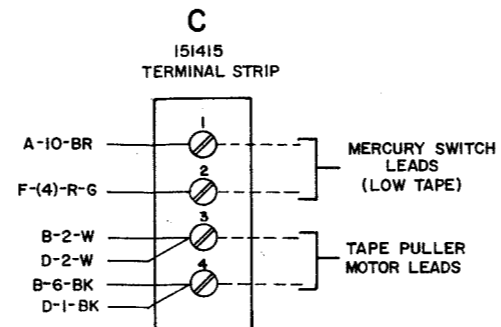
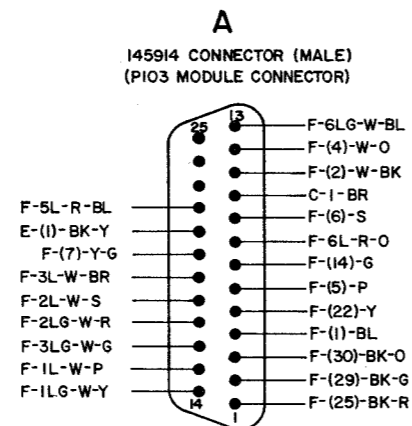
6411 WD

6412 WD

REVISIONS

ISSUE	DATE	AUTH. NO.
1	2-22-65	16407-R
2	4-26-65	86736

- NOTES**
- WIRING LEGEND**
 DISTANT TERMINATING AREA
 DISTANT TERMINATING DESIGNATION
 WIRE COLOR CODE
 A-1-BK
 - COLOR CODE LEGEND**
 W-WHITE P-PURPLE
 G-GREEN Y-YELLOW
 R-RED BL-BLUE
 S-SLATE BK-BLACK
 O-ORANGE BR-BROWN
 - REFER TO 6411WD FOR SCHEMATIC WIRING DIAGRAM.
 - TERMINAL DESIGNATIONS IN PARENTHESIS () ARE FOR REFERENCE ONLY AND NOT MARKED ON COMPONENT.
 - ALL CONNECTORS ARE VIEWED FROM WIRING SIDE.



ACTUAL WIRING DIAGRAM FOR AC356 DATA SPEED RECEIVER TERMINALS

APPROVALS

D AND R <i>AGK</i>	E OF M <i>[Signature]</i>
-----------------------	------------------------------

E-NUMBER

PROD. NO. 6412WD

DATE 12-17-64

P.D. FILE NO. 1-A143AA

DRAWN G.R.S. **CHKD.** *[Signature]*

ENGD. R.C.H. **APPD.** *[Signature]*

TELETYPE CORPORATION

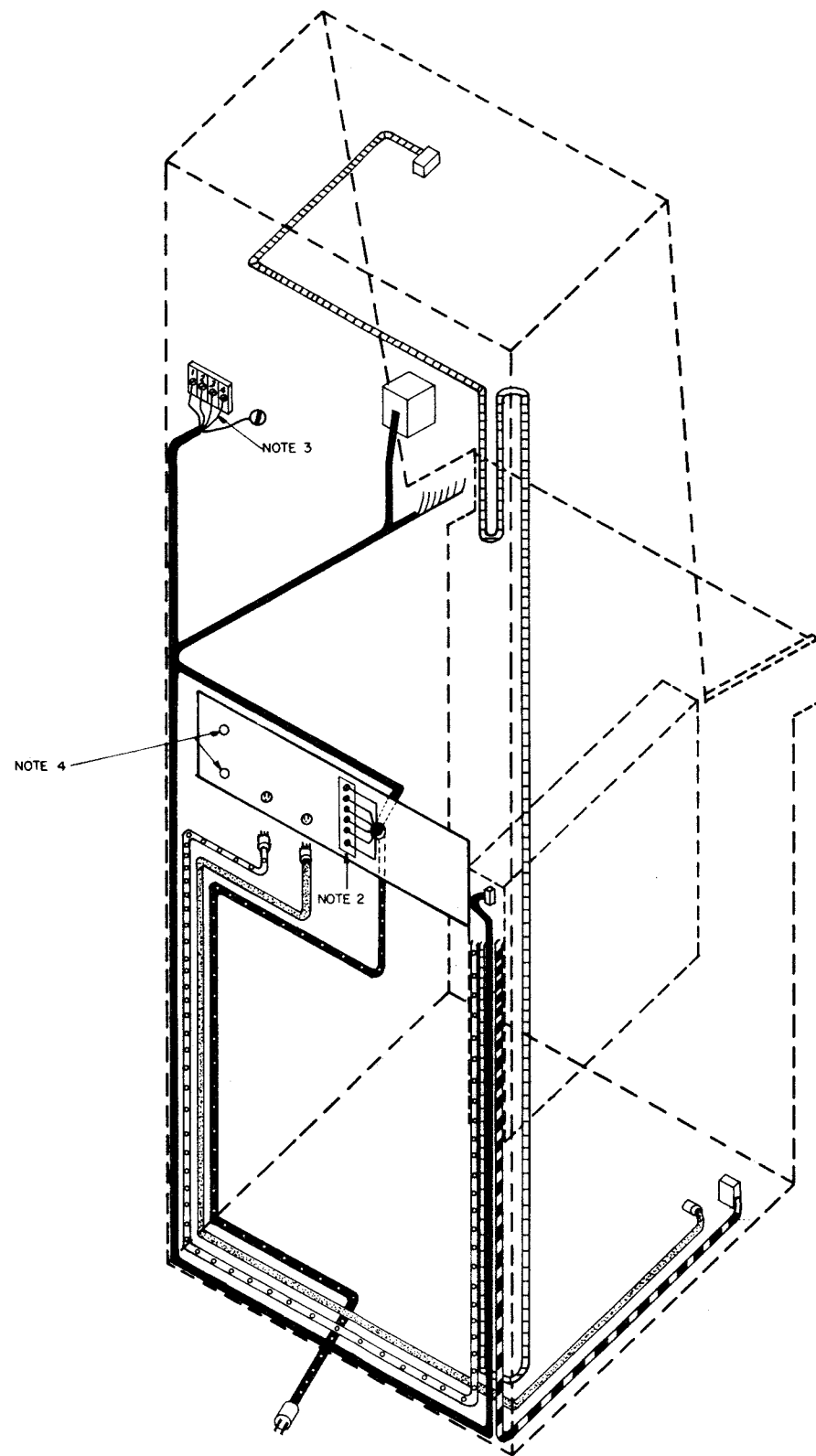
6412 WD

6448WD

REVISIONS

ISSUE	DATE	AUTH. NO.
2	9-29-64	83085

- NO. NOTES
- COLOR CODE:
BK - BLACK
W - WHITE
R - RED
O - ORANGE
BR - BROWN
R-G - RED-GREEN
 - CONNECT
BK TO TERMINAL 6
O TO TERMINAL 4
R TO TERMINAL 3
W TO TERMINAL 2
 - CONNECT
W TO TERMINAL 3
BK TO TERMINAL 4
BR TO TERMINAL 2
R-G TO TERMINAL 1
G TO FRAME GRD.
 - HOLES PROVIDED FOR WESTERN ELECTRIC
44A TERMINAL BOARD.



CABLE LEGEND

	148563
	199794
	DATA SET POWER CORD
	199795
	165239
	182510

ACTUAL
WIRING DIAGRAM
FOR
TYPE 5 DATA SPEED
RECEIVER CABINET
VS228

APPROVALS

D AND R <i>HAR</i>	E OF M <i>[Signature]</i>
-----------------------	------------------------------

E-NUMBER

PROD. NO. 6448WD

DATE 11-27-63

P.D. FILE NO. 1-A143AA

DRAWN G.R.S. CHKD.

ENGD. R.C.H. APPD.

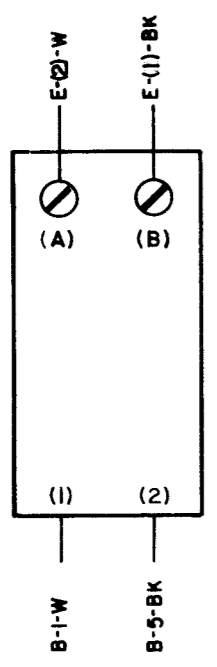
TELETYPE CORPORATION

6448WD

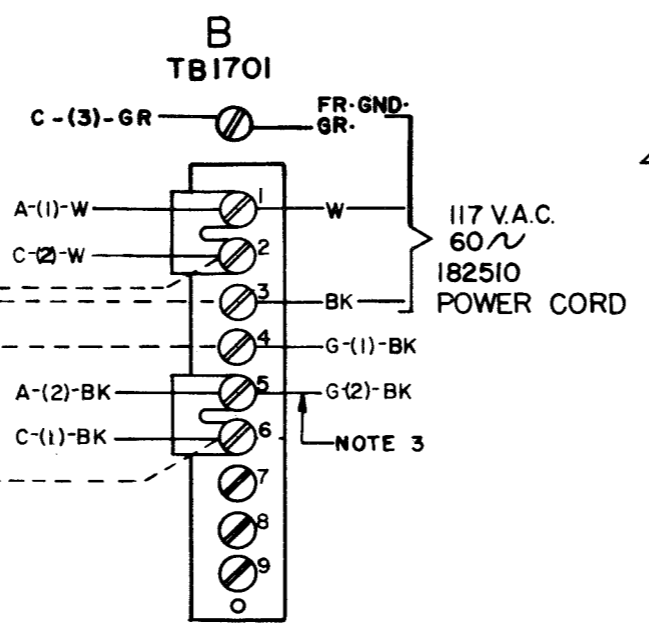
7103 WD

ISSUE	DATE	AUTH. NO.
2	9-28-64	83088
3	10-7-64	84000

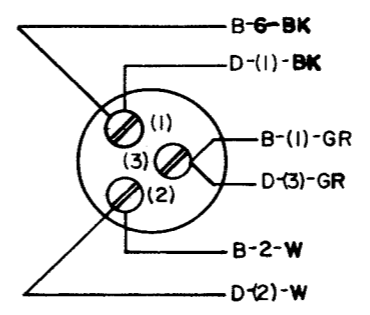
A
FL1701



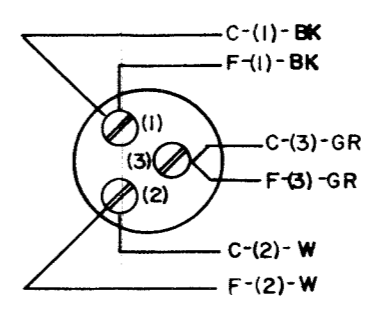
NOTE 4



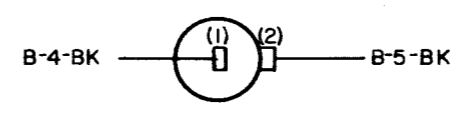
C
J1702



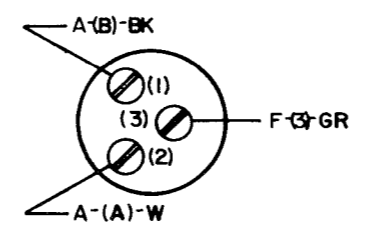
D
J1701



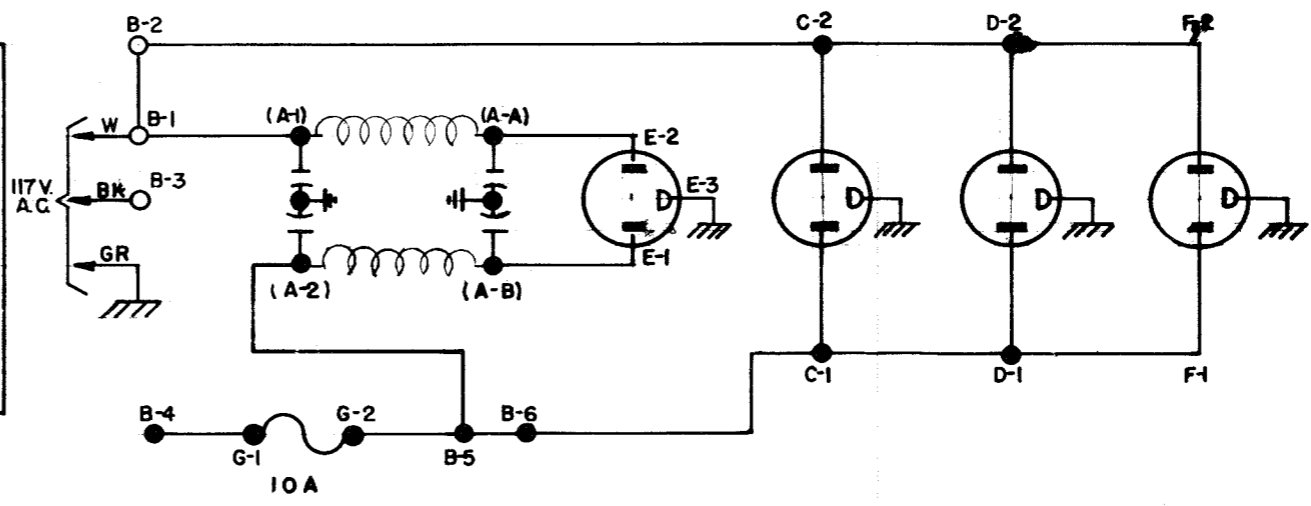
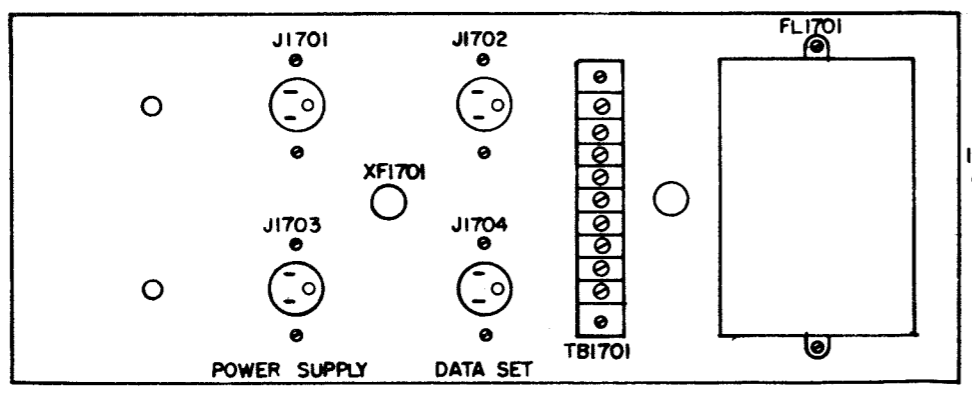
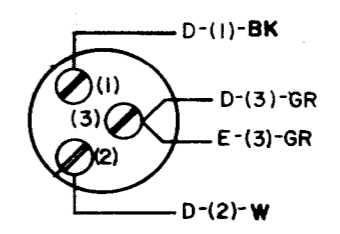
G
XF1701



E
J1704



F
J1703



NOTES.

NO.	NOTES.
1.	WIRING LEGEND DISTANT TERMINATING AREA DISTANT TERMINATING DESIGNATION WIRE COLOR CODE
2.	TERMINAL DESIGNATIONS ENCLOSED IN PARENTHESES ARE NOT MARKED ON THE COMPONENT
3.	148574 CABLE ASSEMBLY
4.	148563 FOR AC 356 OR 148564 FOR AC 364

ACTUAL WIRING DIAGRAM FOR ELECTRICAL SERVICE PANEL ASSEM NO. 148562

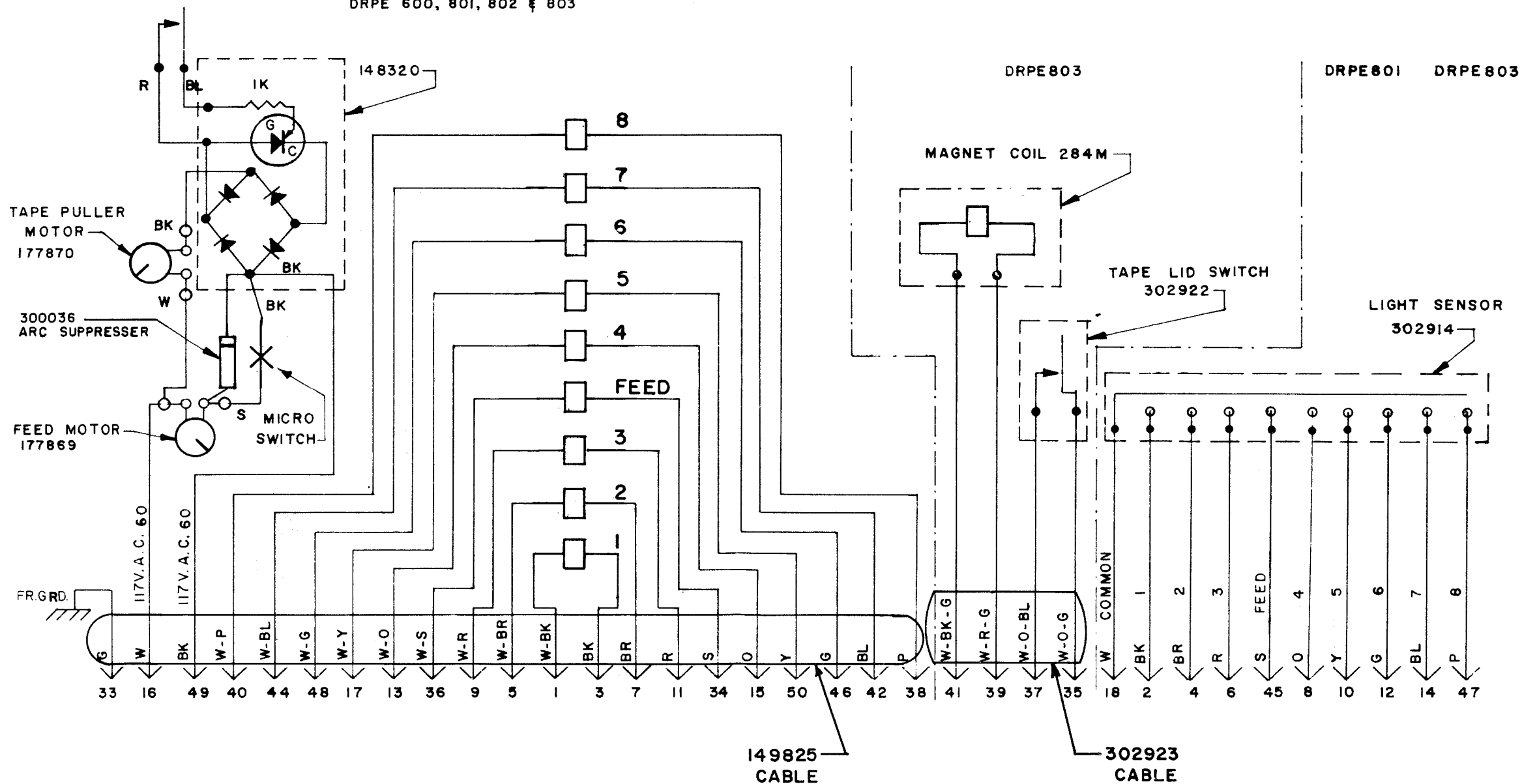
APPROVALS
D AND R E OF M
[Signature]

E-NUMBER
PROD. NO. 7103WD
DATE: 11-16-63
P.D. FILE NO. 1-A143AA
DRAWN. GRS CHKD
ENG. R.C.H. APPD *[Signature]*

TELETYPE CORPORATION
7103 WD

ISSUE	DATE	AUTH. NO.
2	10-8-64	80988
3	12-7-64	85134

DRPE 600, 801, 802 & 803



SCHEMATIC
DIAGRAM
DRPE 801, 802, 803
& 800

APPROVALS

D AND R	E OF M
<i>[Signature]</i>	<i>[Signature]</i>

E-NUMBER
PROD. NO. 7131 WD

DATE: 12-19-63
P.D. FILE NO. 2-35.136AA
DRAWN R. P. CHKD *[Signature]*
ENGD K. R. APPD

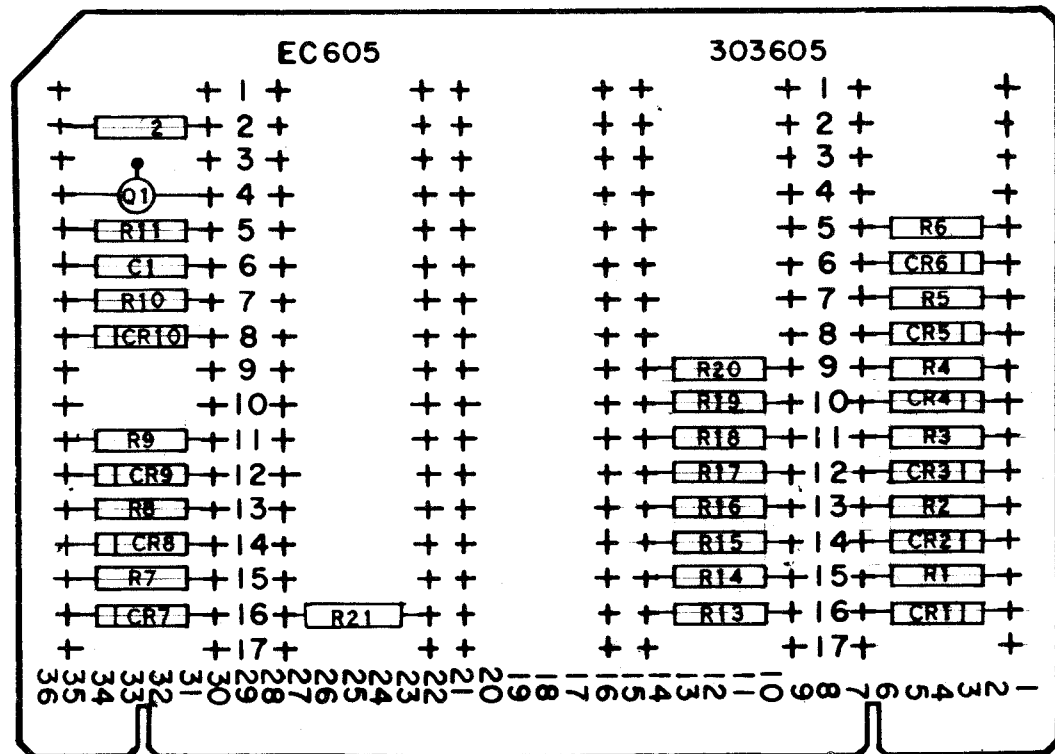
TELETYPE
CORPORATION

7131 WD

EC 605
303605

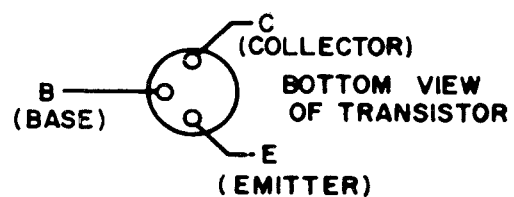
CIRCUIT BOARD EC605

303605



199783

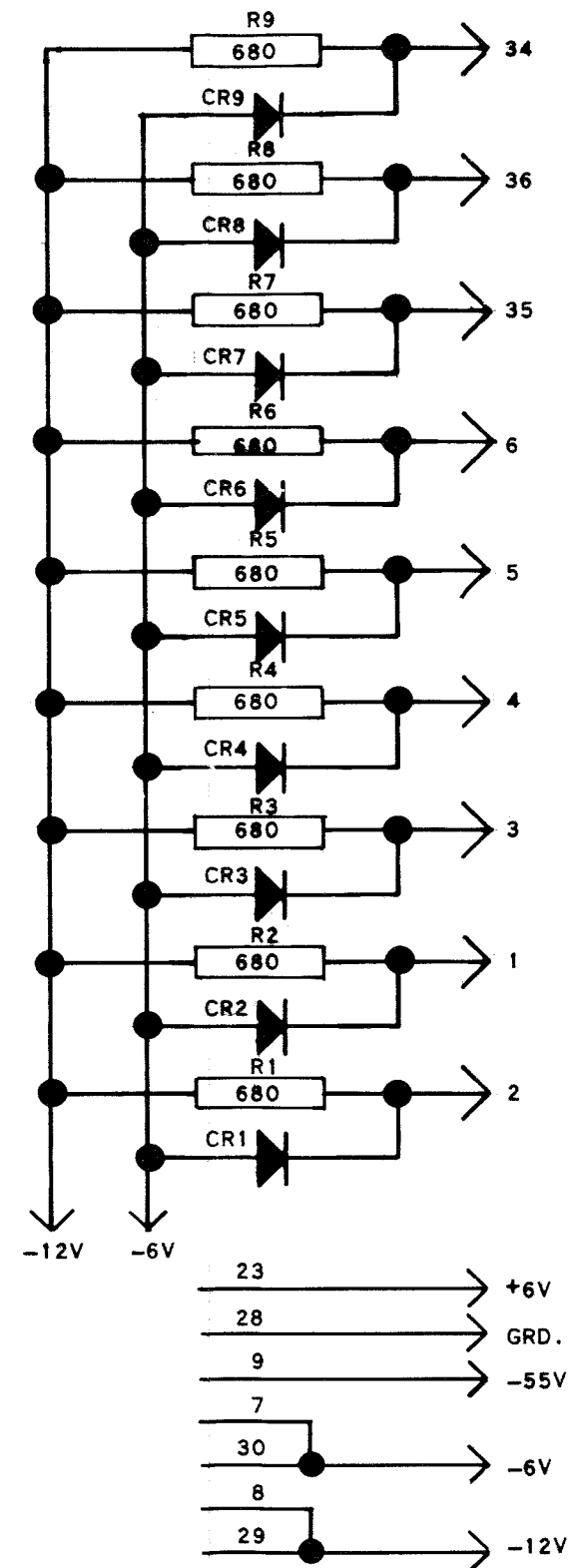
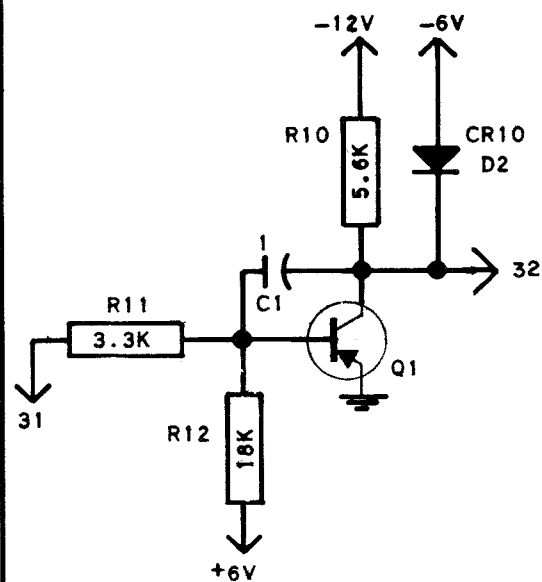
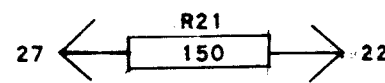
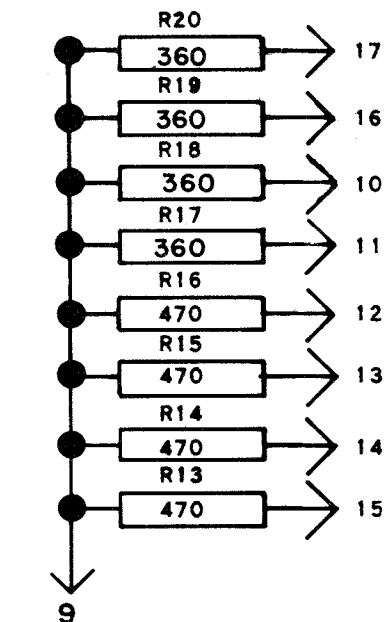
REFER TO 6050 WD FOR MARKING INFORMATION



THIS CARD CONSISTS OF THREE INDEPENDENT CIRCUITS. THE FIRST IS BIAS NETWORK CONSISTING OF NINE DIODES AND NINE RESISTORS. THE SECOND IS NINE CURRENT LIMITING RESISTORS TO -55 VOLTS. THE THIRD IS A PNP SLOW INVERTER. THE PHASE INVERTER IS A COMMON EMITTER AMPLIFIER WHICH PROVIDES AN INVERTED OUTPUT. Q1 HAS A REVERSED BIAS OF +6 VOLTS AND THE COLLECTOR IS CLAMPED AT -6 VOLTS BY CR10. WITH A NEGATIVE 6 VOLTS APPLIED AT 31, Q1 IS DRIVEN INTO SATURATION. CAPACITOR C1 CAUSES THE CIRCUIT TO REJECT SHORT-DURATION INPUT PULSES.

SYMBOL

REVISIONS		
ISSUE	DATE	AUTH. NO.
2	4-1-64	80037
3	6-29-65	87243



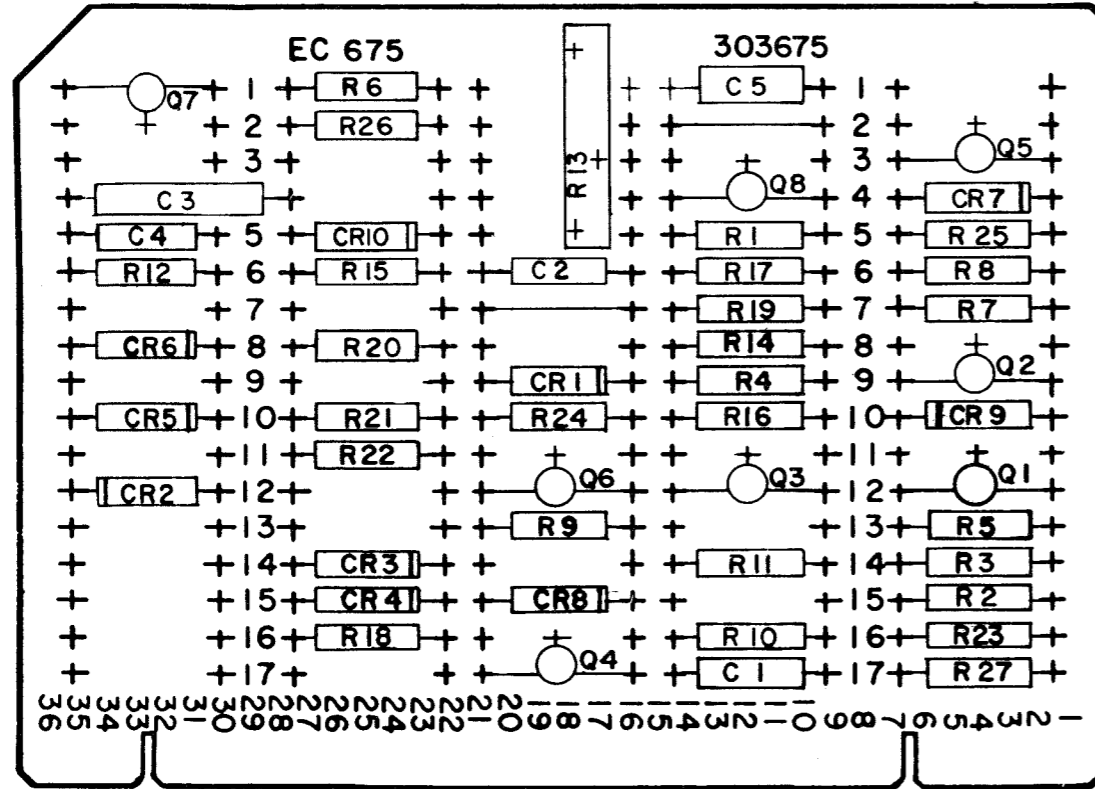
REF. DESIGN.	TELETYPE PART NO.	TOTAL QTY.	NAME AND DESCRIPTION	LOCATING FUNCTION	REF. DESIGN.	TELETYPE PART NO.	TOTAL QTY.	NAME AND DESCRIPTION	LOCATING FUNCTION
R1	129850	9	RESISTOR, FIXED 680 OHMS	DIVIDER					
R2			SAME AS R1	"					
R3			" " "	"					
R4			" " "	"					
R5			" " "	"					
R6			" " "	"					
R7			" " "	"					
R8			" " "	"					
R9			" " "	"					
R10	118186	1	RESISTOR, FIXED 5.6 K OHMS	COLLECTOR LOAD					
R11	129851	1	RESISTOR, FIXED 3.3K OHMS	BASE BIAS					
R12	118151	1	RESISTOR, FIXED 18K OHMS	" "					
R13	137602	4	RESISTOR, FIXED 470 OHMS	CURRENT LIMITING					
R14			SAME AS R13	" "					
R15			" " "	" "					
R16			" " "	" "					
R17	143669	4	RESISTOR, FIXED 360 OHMS	" "					
R18			SAME AS R17	" "					
R19			" " "	" "					
R20			" " "	" "					
R21	143658	1	RESISTOR, FIXED 150 OHMS						
CR1	177108	10	DIODE D2						
CR2			SAME AS CR1						
CR3			" " "						
CR4			" " "						
CR5			" " "						
CR6			" " "						
CR7			" " "						
CR8			" " "						
CR9			" " "						
CR10			" " "	CLAMP					
C1	177107	1	CAPACITOR .1 MFD.	TIMING					
Q1	177105	1	TRANSISTOR P22	INVERTER					
EC	199783	1	CIRCUIT CARD, ETCHED						
	144495	1	PAD, TRANSISTOR						

Sheet 2 of 2

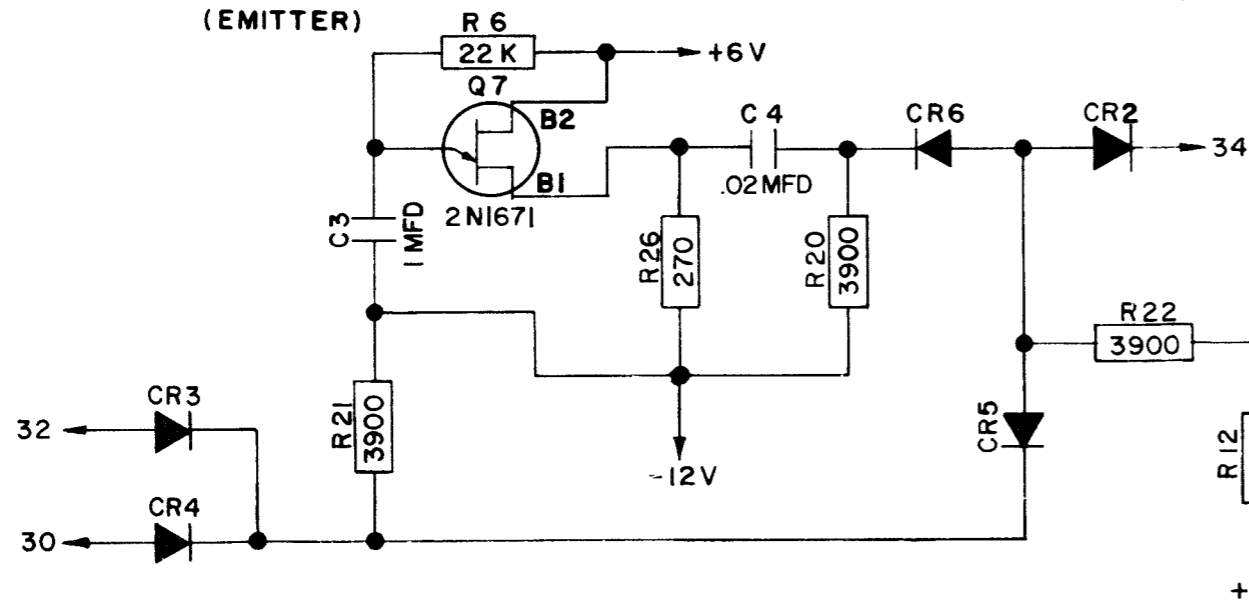
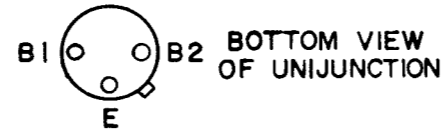
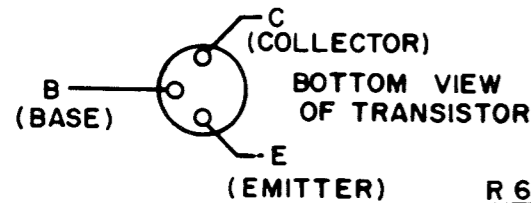
APPROVALS	
D AND R	E OF M
E-NUMBER	
PROD. NO. 303605	
DATE 10-8-63	
RD FILE NO. 1-A143AA	
DRAWN G.R.S.	CHKD.
ENGR J.J.H.	APPD <i>EM</i>
TELETYPE CORPORATION	
303605	

EC 675

303675



REFER TO 6050 WD FOR MARKING INFORMATION



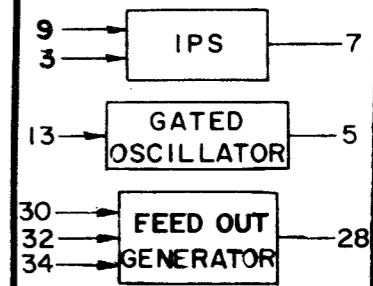
LOGIC CARD

THIS CARD PERFORMS THREE INDEPENDENT LOGIC FUNCTIONS. THE FIRST IS AN INTEGRATOR PULSE SHAPER USING Q1 AND Q2. THE SECOND CIRCUIT USES Q3, Q8 AND Q5 TO FORM A GATED OSCILLATOR. TRANSISTORS Q4, Q6 AND Q7 FORM A FEEDOUT GENERATOR. FOR THE THEORY OF OPERATION, SEE SPECIFICATION

CIRCUIT BOARD EC 675

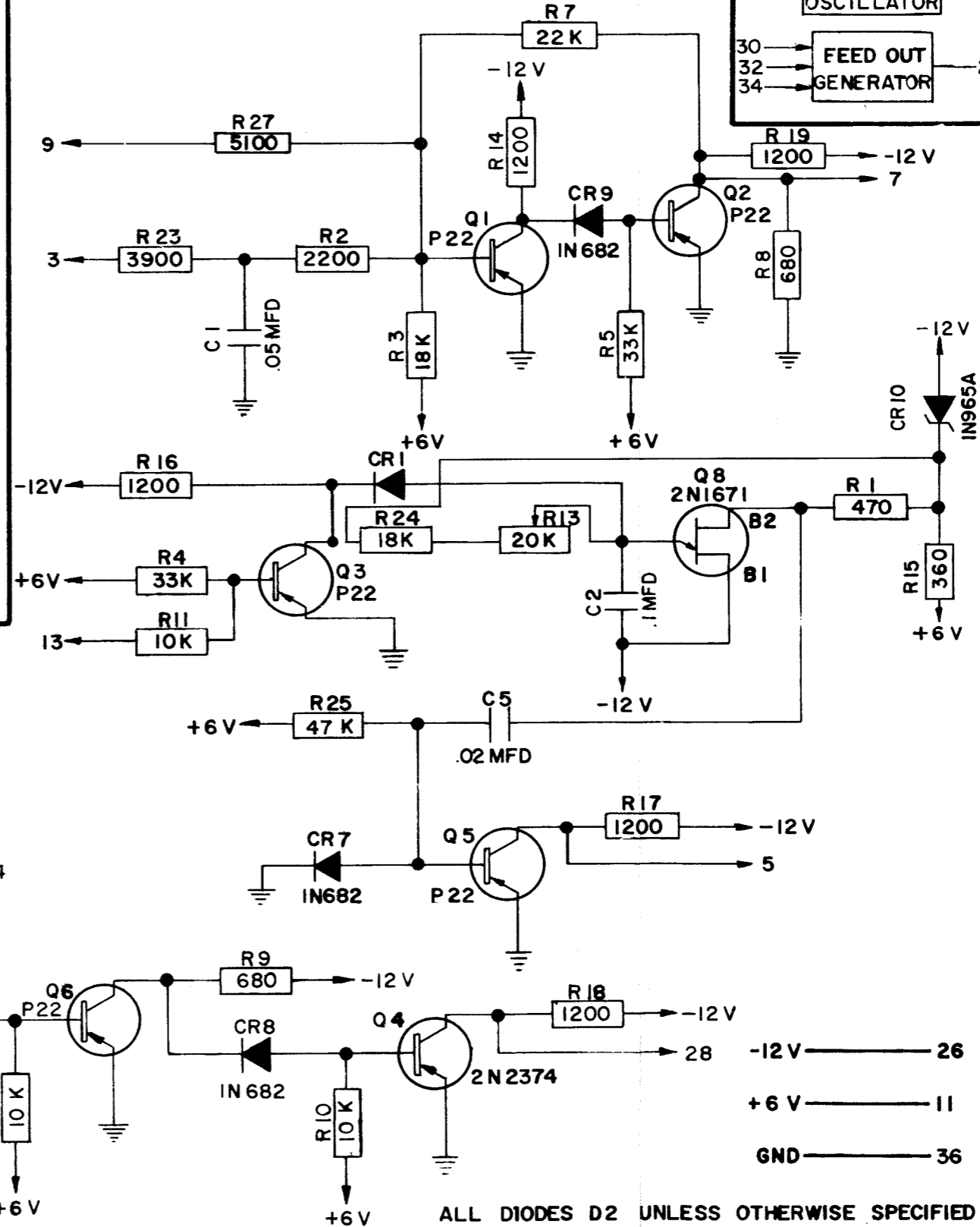
303675

SYMBOLS



REVISIONS

ISSUE	DATE	AUTH. NO.
2	4-1-64	80037
3	6-23-64	80734
4	10-22-64	80879
5	2-8-65	85287



ALL DIODES D2 UNLESS OTHERWISE SPECIFIED

REF. DESIGN.	TELETYPE PART NO.	TOTAL QTY.	NAME AND DESCRIPTION	LOCATING FUNCTION	REF. DESIGN.	TELETYPE PART NO.	TOTAL QTY.	NAME AND DESCRIPTION	LOCATING FUNCTION
R1	137602	1	RESISTOR 470 OHMS	BASE 2 LOAD	CR1	177108	6	DIODE D2	CAPACITOR DISCHARGE
R2	129852	1	RESISTOR 2200 OHMS	BASE INPUT	CR2			DIODE D2	AND GATE
R3	118151	2	RESISTOR 18K OHMS	BASE BIAS	CR3			DIODE D2	OR GATE
R4	118153	2	RESISTOR 33K OHMS	BASE BIAS	CR4			DIODE D2	OR GATE
R5			RESISTOR 33K OHMS	BASE BIAS	CR5			DIODE D2	AND GATE
R6	118177	2	RESISTOR 22K OHMS	TIMING	CR6			DIODE D2	AND GATE
R7			RESISTOR 22K OHMS	FEEDBACK	CR7	177611	3	DIODE 1N682	BIAS
R8	129850	2	RESISTOR 680 OHMS	VOLTAGE DIVIDER	CR8			DIODE 1N682	COUPLING
R9			RESISTOR 680 OHMS	COLLECTOR LOAD	CR9			DIODE 1N682	COUPLING
R10	118180	3	RESISTOR 10K OHMS	BASE BIAS	CR10	177404	1	DIODE ZENER 1N965 A	VOLTAGE REGULATION
R11			RESISTOR 10K OHMS	BASE INPUT	Q1	177105	5	TRANSISTOR P22	AMPLIFIER
R12			RESISTOR 10K OHMS	BASE BIAS	Q2			TRANSISTOR P22	AMPLIFIER
R13	148836	1	POTENTIOMETER 20K OHMS	TIMING ADJUST	Q3			TRANSISTOR P22	OSCILLATOR CONTROL
R14	137441	5	RESISTOR 1200 OHMS	COLLECTOR LOAD	Q4	148834	1	TRANSISTOR 2N2374	AMPLIFIER
R15	143669	1	RESISTOR 360 OHMS	VOLTAGE DROPPING	Q5			TRANSISTOR P22	AMPLIFIER
R16			RESISTOR 1200 OHMS	COLLECTOR LOAD	Q6			TRANSISTOR P22	AMPLIFIER
R17			RESISTOR 1200 OHMS	COLLECTOR LOAD	Q7	177610	2	TRANSISTOR 2N1671	OSCILLATOR
R18			RESISTOR 1200 OHMS	COLLECTOR LOAD	Q8			TRANSISTOR 2N1671	OSCILLATOR
R19			RESISTOR 1200 OHMS	COLLECTOR LOAD					
R20	143667	4	RESISTOR 3900 OHMS	CAPACITOR DISCHARGE		144495	8	TRANSISTOR PAD	
R21			RESISTOR 3900 OHMS	BIAS					
R22			RESISTOR 3900 OHMS	BASE INPUT	EC	148801	1	ETCHED CIRCUIT CARD	
R23			RESISTOR 3900 OHMS	INTEGRATION RESISTOR					
R24	118151		RESISTOR 18K OHMS	CURRENT LIMITER					
R25	118154	1	RESISTOR 47K OHMS	BASE BIAS			2	# 24 AWG BARE WIRE STRAP	
R26	118725	1	RESISTOR 270 OHMS	BASE 1 LOAD					
R27	143665	1	RESISTOR 5100 OHMS	INHIBIT INPUT					
C1	137306	1	CAPACITOR .05 MFD	INTEGRATION CAPACITOR					
C2	148833	1	CAPACITOR .1 MFD	TIMING					
C3	148831	1	CAPACITOR 1 MFD	TIMING					
C4	137311	2	CAPACITOR .02 MFD	COUPLING					
C5			CAPACITOR .02 MFD	COUPLING					

APPROVALS

D AND R E OF M

[Handwritten initials]

E-NUMBER

PROD. NO. 303675

DATE 8-13-63

PD FILE NO. 2-35.136 AA

DRAWN AHP CHKD.

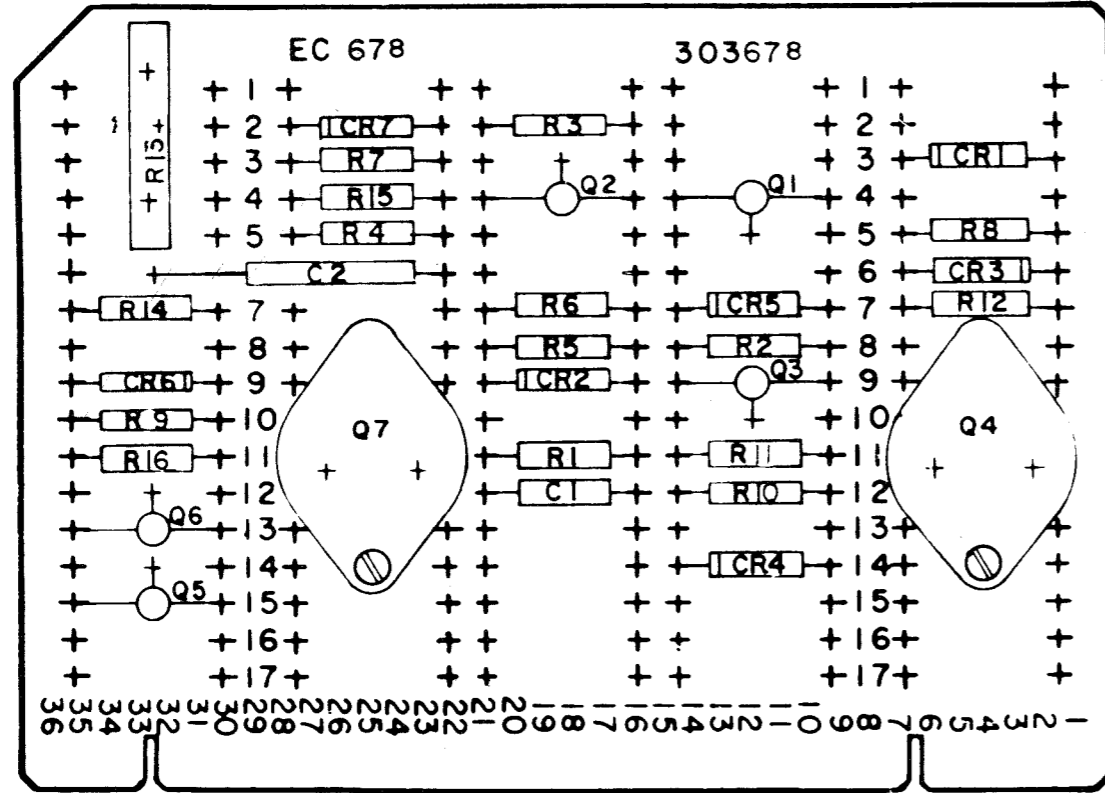
ENGD EWS APPD. *[Handwritten initials]*

TELETYPE CORPORATION

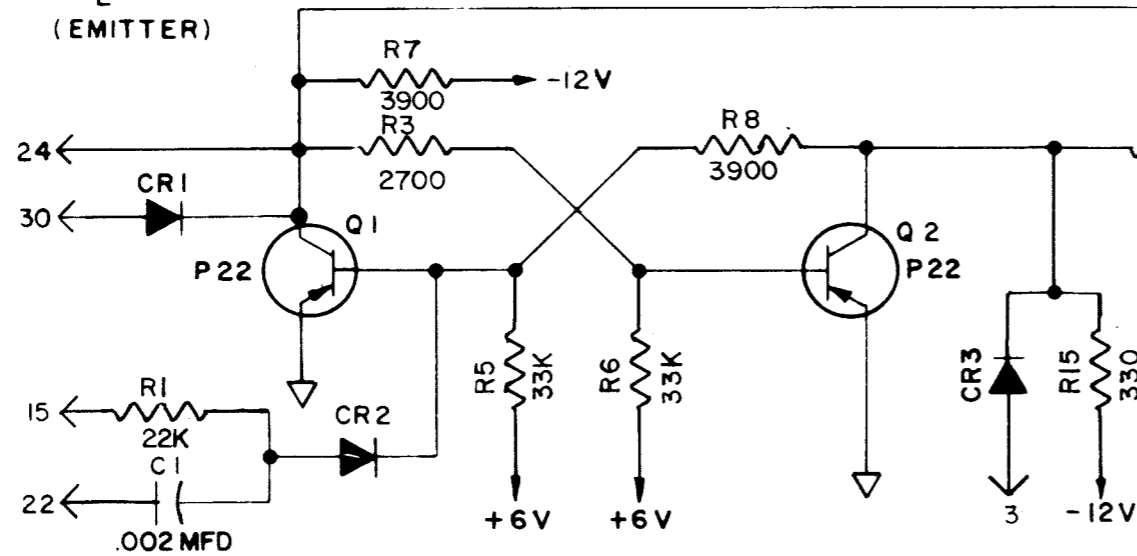
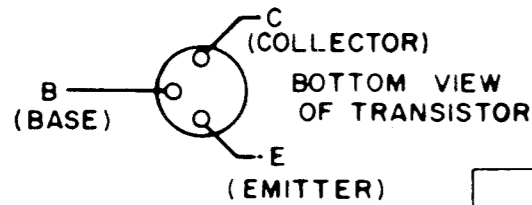
303675

POWER TRANSISTORS MOUNTED WITH
1 SCREW, 1 NUT, AND 2 LOCKWASHERS

EC 678
303678



REFER TO 6050 WD FOR MARKING INFORMATION



MAGNET DRIVER

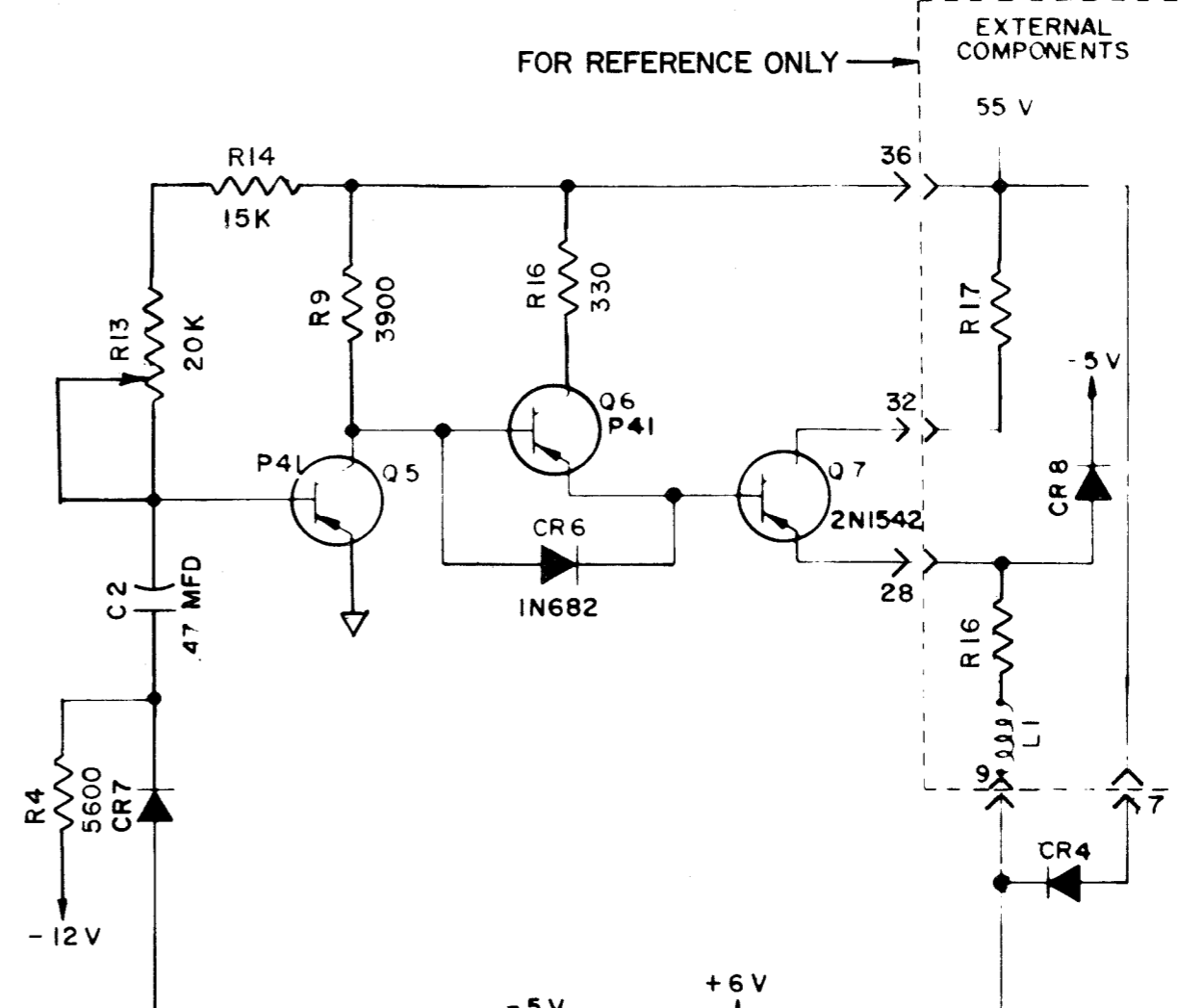
THIS IS A MAGNET DRIVER CARD. IT PROVIDES A MAGNET HOLDING CURRENT THROUGH TRANSISTOR Q4. BY SETTING THE FLIP FLOP (Q1 & Q2) TO THE "1" STATE, Q4 IS SHUT OFF RELEASING THE MAGNET. WHEN THE FLIP FLOP IS RESET, Q4 IS TURNED ON AND A TIMED CURRENT PULSE IS PROVIDED BY Q7 TO PULL UP THE MAGNET. FOR THE THEORY OF OPERATION, SEE SPECIFICATION

CIRCUIT BOARD EC 678

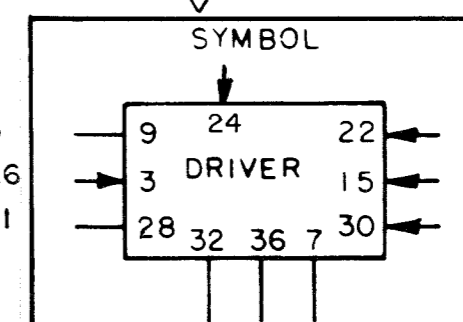
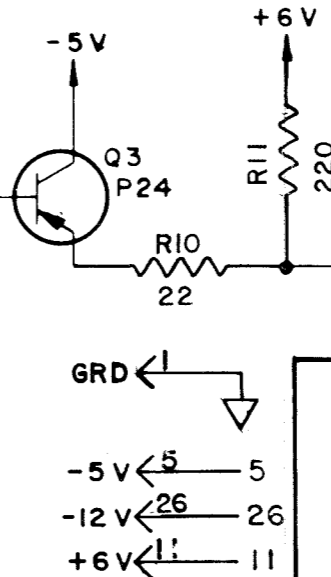
303678

REVISIONS

ISSUE	DATE	AUTH NO
1	2-24-65	16823R



FOR REFERENCE ONLY



ALL DIODES TYPE D2 UNLESS OTHERWISE SPECIFIED

REF DESIGN.	TELETYPE PART NO.	TOTAL QTY.	NAME AND DESCRIPTION	LOCATING FUNCTION	REF DESIGN.	TELETYPE PART NO.	TOTAL QTY.	NAME AND DESCRIPTION	LOCATING FUNCTION
R1	118177	2	RES:STOR 22K OHMS	PRIME	Q1	177105	2	TRANSISTOR P22	FLIP FLOP
R2	"		RESISTOR 22K OHMS	BASE BIAS	Q2	"		TRANSISTOR P22	FLIP FLOP
R3	118144	1	RES:STOR 2700 OHMS	CROSSOVER	Q3	193135	1	TRANSISTOR P24	EMITTER FOLLOWER
R4	118186	1	RES:STOR 5600 OHMS	CAPAC:TOR DISCHARGE	Q4	177618	2	TRANSISTOR 2N1542	AMPLIFIER
R5	118153	2	RES:STOR 33K OHMS	BASE BIAS	Q5	177224	2	TRANSISTOR P41	AMPLIFIER
R6	"		RES:STOR 33K OHMS	BASE BIAS	Q6	"		TRANSISTOR P41	EMITTER FOLLOWER
R7	143667	2	RESISTOR 3900 OHMS	COLLECTOR LOAD	Q7	177618		TRANSISTOR 2N1542	EMITTER FOLLOWER
R8	"		RES:STOR 3900 OHMS	CROSSOVER					
R9	170314	1	RES:STOR 3900 OHMS, 2 W	COLLECTOR LOAD		111017	2	SCREWS 6-40 F.I.L.	
R10	148835	1	RES:STOR 22 OHMS, 2 W	COUPLING					
R11	118724	1	RESISTOR 220 OHMS	BASE BIAS		80728	2	NUTS 6-40 HEX.	
R12	118725	1	RESISTOR 270 OHMS	COUPLING					
R13	148836	1	POTENTIOMETER 20K OHMS	TIMING		92260	4	WASHERS 10-32	
R14	118150	1	RESISTOR 15 K OHMS	CURRENT LIMITING					
R15	143661	2	RES:STOR 330 OHMS	COLLECTOR LOAD		144495	5	PAD, TRANSISTOR	
R16	"		RES:STOR 330 OHMS	COLLECTOR LOAD					
					EC	148800	1	ETCHED CIRCUIT CARD	
C1	177332	1	CAPAC:TOR .002 MFD	DIFFERENTIATING					
C2	148832	1	CAPAC:TOR .47 MFD	TIMING					
CR1	177108	4	DIODE D2	INPUT					
CR2	"		DIODE D2	INPUT					
CR3	"		DIODE D2	INPUT					
CR4	182520	1	DIODE MED. CURR.	CLAMP					
CR5	177611	2	DIODE 1N682	BASE BIAS					
CR6	"		DIODE 1N682	BASE BIAS					
CR7	177108		DIODE D2	COUPLING					

APPROVALS

D AND R E OF M

49K 

E-NUMBER

PROD. NO 303678

DATE 1-20-65

PD FILE NO 1-A143AA

DRAWN G.J.M. CHKD. *WBM*

ENGD W.B.M. APPD

TELETYPE CORPORATION

303678