

ISSUE CONTROL RECORD

7973WD

NO. NOTES

SUPPORTING INFORMATION

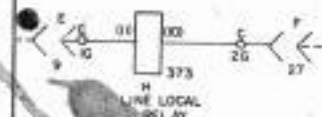
CONTENTS

SHEET NO.

ISSUE

REVISIONS APPLYING TO THIS CONTROL RECORD

NOTES CONTINUED FROM SHEET 1
 WIRING IS SHOWN FOR SETS WITH RECTIFIER CIRCUIT FOR LINE-LOCAL RELAY WIRING FOR SETS WITHOUT RECTIFIER CIRCUIT WAS AS FOLLOWS



ON ISSUE 8 OF SHEET 7973WD CR1A WAS ABSENT.

CATEGORY

NO.

2	3	4	5	6	7	8	9	10	11	12	13	14	15	16	17	18	19
---	---	---	---	---	---	---	---	----	----	----	----	----	----	----	----	----	----

1	X	X	X	X	X	X											
2	X	X	X	X													

ISSUE	DATE	AUTH. NO.
1	9-1-66	17794-B
2	1-30-67	92138
3	3-30-67	93289
4	6-9-67	94009
5	8-9-67	94301-B
6	12-4-67	94819-B
7	12-28-67	95147-RC
8	1-2-69	96495
9	5-18-71	2722

MODIFIED FOR
 ERX PL-2
 3-6-74

ISSUE CONTROL SHEET 1 OF 1

SCHEMATIC WIRING DIAGRAM FOR VXL300 & VXL301 KEYBOARD SEND-RECEIVE VXL330 & VXL340 RECEIVE-ONLY TELETYPEWRITER SETS

WD NUMBER 7973WD
 DRAWN D.P. CHKD.
 ENGR. R.L.V. APPD.

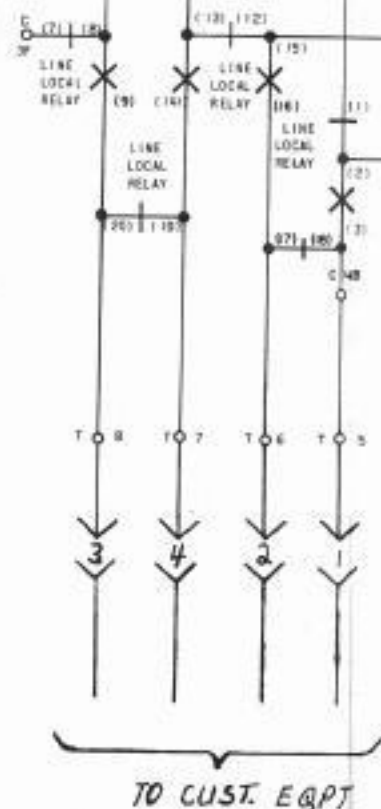
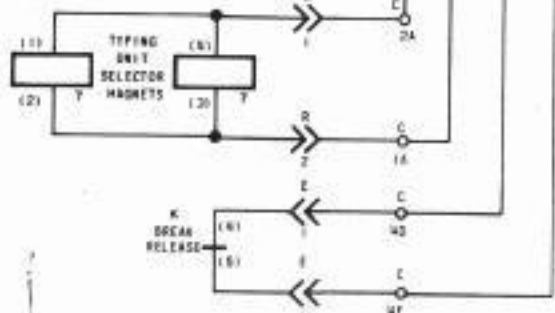
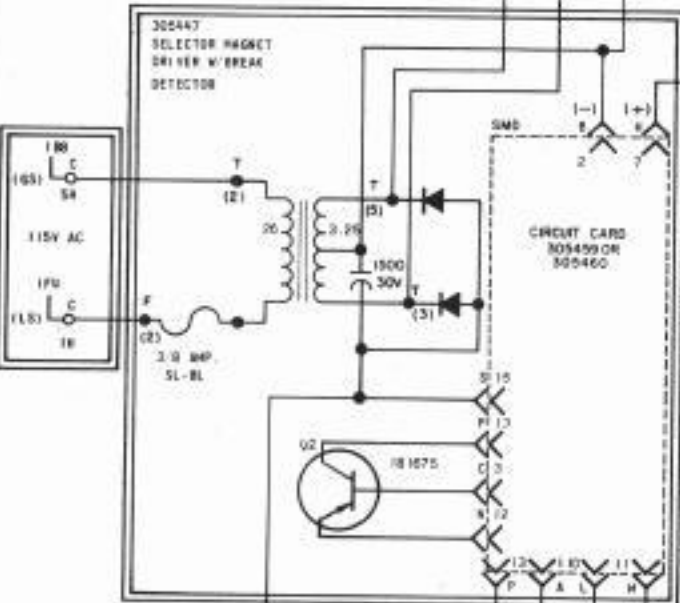
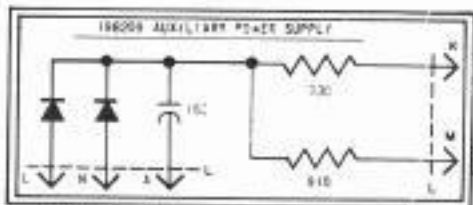
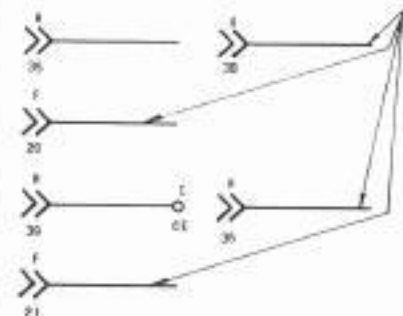
TELETYPE CORPORATION

7973WD

REFER TO SHEET 1 FOR NOTES

TAPED & TIED TO MAIN BODY OF CABLE

SPARES



TO CUST. EQPT

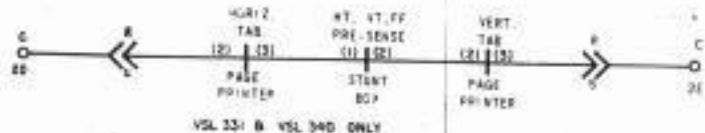
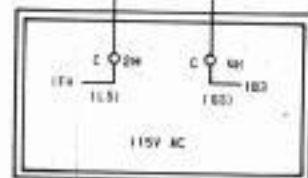
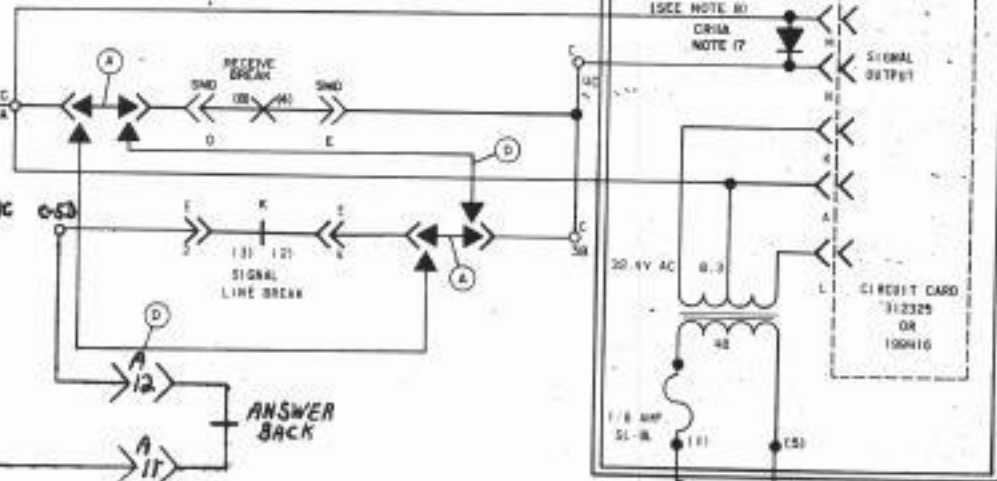
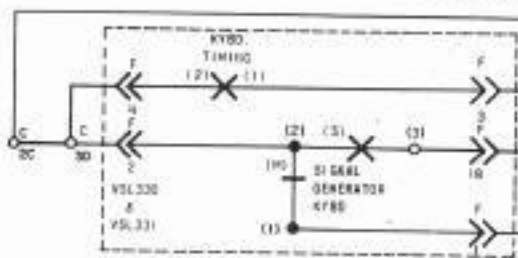
NOTE: REVISION INFORMATION MUST ALSO BE REFLECTED ON THE ISSUE CONTROL RECORD WHICH IS A PART OF THIS DRAWING

7973 WD

REVISIONS

ISSUE	DATE	AUTH. NO.
1	9-1-66	17794-D
2	1-30-67	92158
3	3-30-67	93283
4	6-8-67	94009
5	8-8-67	94301B
6	5-18-71	2722

MODIFIED FOR
EAX PL-2
3-6-72



SEE ISSUE CONTROL RECORD FOR COMPLETE LIST OF SHEETS COMPRISING THIS WD

SHEET 2

SCHEMATIC WIRING DIAGRAM FOR VSL330 & VSL331 KEYBOARD SEND-RECEIVE VSL336 & VSL340 RECEIVE-ONLY TELETYPEWRITER SETS

APPROVALS

D AND R	E OF M
---------	--------

E-NUMBER

PROD. NO. 7973WD

DATE 5-23-67

P.D. FILE NO. 1-A151-A116

DRAWN BY T.S. CHKD. Tol

ENGR. RLK APPD. J.R.S.

TELETYPE CORPORATION

7973 WD