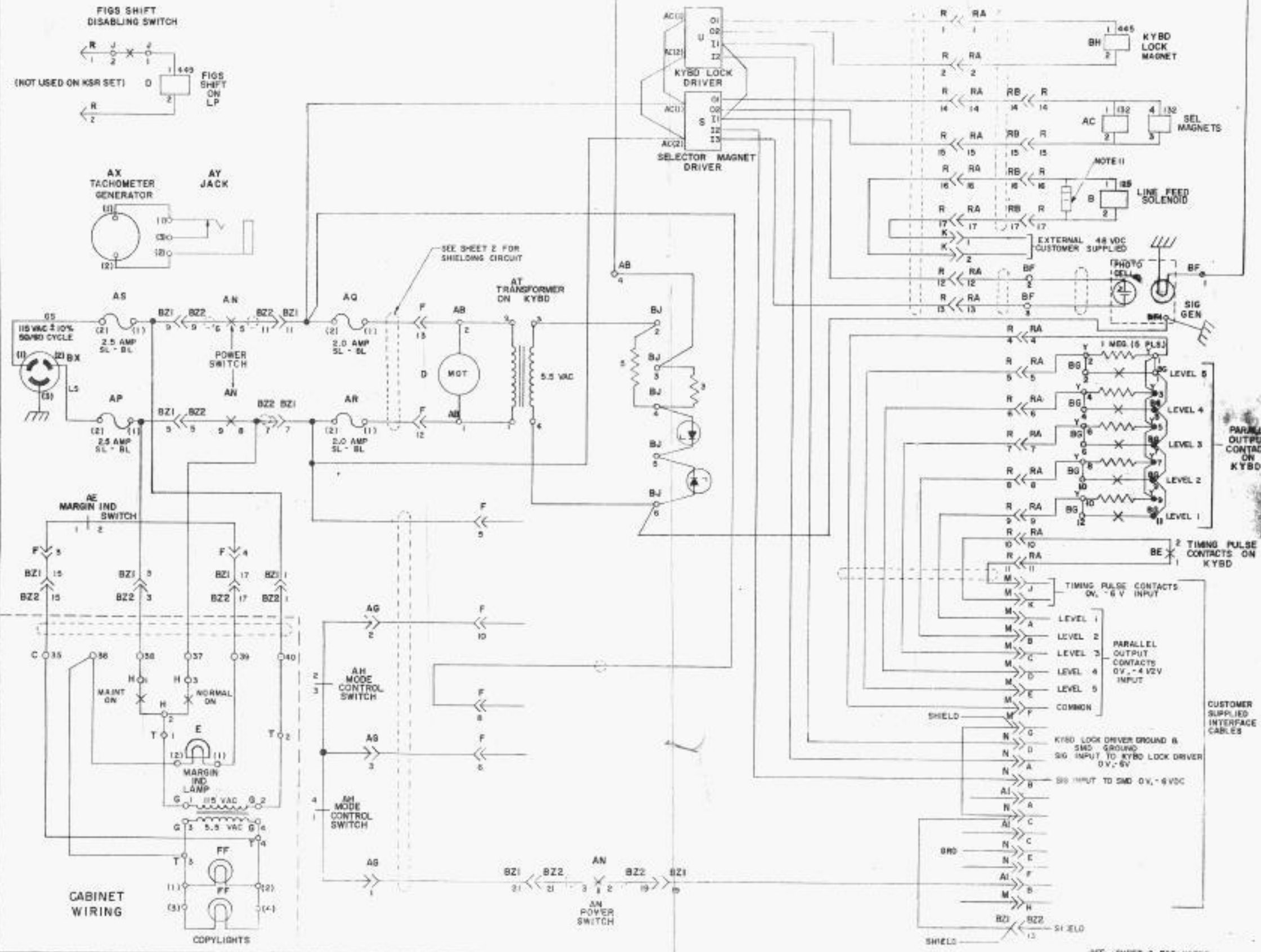


REVISIONS

ISSUE	DATE	AUTH. NO.
1	4-8-65	16880-R
2	6-21-65	87317
3	8-2-65	87638
4	10-12-65	89246
5	10-21-65	89239
6	2-8-66	89710



SHEET 1 OF 2

SCHEMATIC WIRING DIAGRAM FOR PAGE PRINTER SET (SPOOK) KSR

APPROVALS

D AND R	E OF R
<i>[Signature]</i>	<i>[Signature]</i>

E-NUMBER

PROJ. NO. 7545WD

DATE

R.D. FILE NO. 74-30.65AA

DRAWN L.J.F. CHKD. *[Signature]*

ENGD. C.F.C. APPD. *[Signature]*

TELETYPE CORPORATION

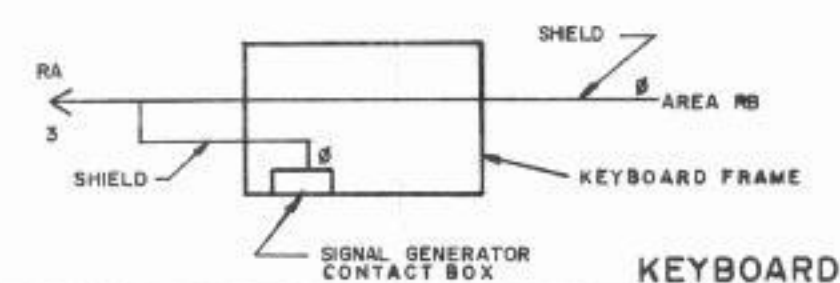
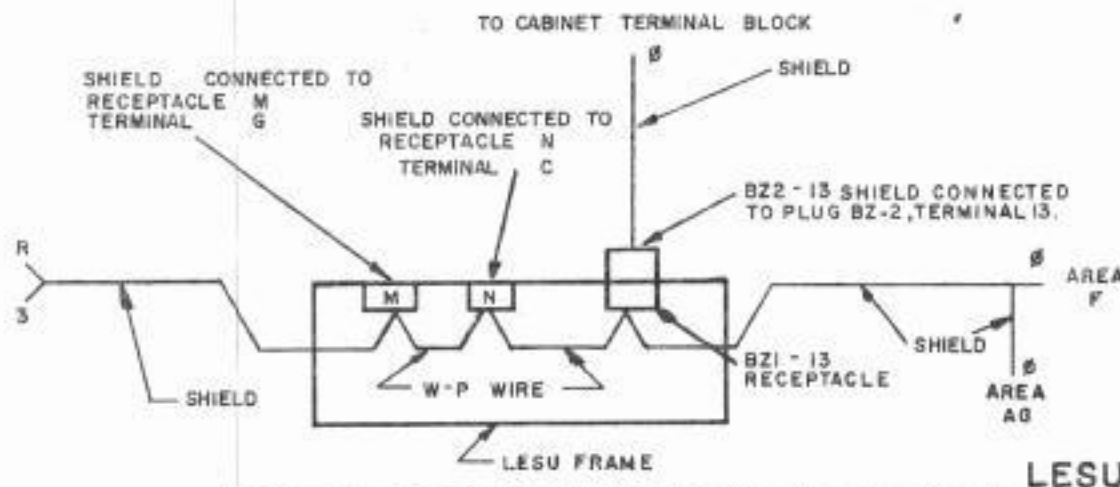
7545 WD

SEE SHEET 2 FOR NOTES

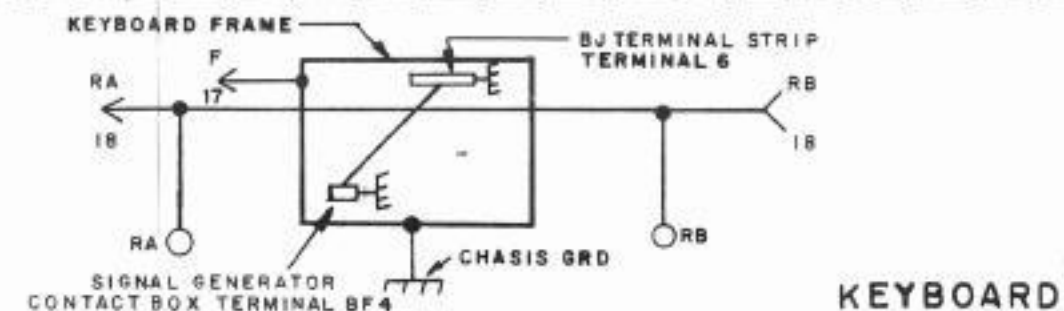
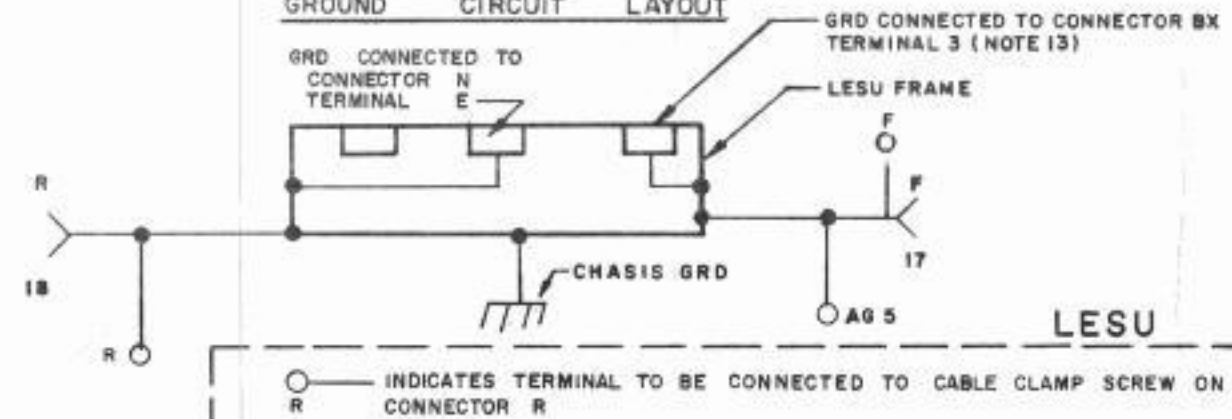
ISSUE	DATE	AUTH NO
1	4-8-65	16880-R
2	2-3-66	89710
3	2-23-66	90505

- NO** **NOTES**
- SEE 7540 WD FOR ACTUAL WIRING DIAGRAM FOR LP.
7542 WD " " " " " LK
7543 WD " " " " " LESU
7544 WD " " " " " LAC
 - TERMINAL DESIGNATIONS ENCLOSED IN PARENTHESES ARE FOR REFERENCE AND ARE NOT MARKED ON COMPONENTS.
 - FOR TELETYPE PERSONNEL REFERENCE
SPEC. 61,018 S - 61,025 S
61,026 S - 61,027 S
 - ALL APPARATUS SHOWN IN UNOPERATED OR DE-ENERGIZED POSITION. LP WIRED FOR 60 MA. OPERATION
 - UNITS WIRED FOR 115 V.A.C. 50/60 CYCLE POWER INPUT
 - RESISTANCE VALUES IN OHMS, UNLESS OTHERWISE SPECIFIED.
 - ← INDICATES MALE TERMINAL ON RECEPTACLE.
↘ " FEMALE " " " "
 - ⊖ INDICATES SHIELDED WIRE
 - REFER TO 7535WD ACTUAL WIRING DIAGRAM AND 7536WD SCHEMATIC WIRING DIAGRAM FOR KEYBOARD LOCK DRIVER AND SELECTOR MAGNET DRIVER.
 - SHIELDS ARE NOT GROUNDED BY TELETYPE.
 - ⊖ INDICATES 153631 SPARK SUPPRESSION NETWORK CONSISTING OF 0.11 μF CAPACITOR IN SERIES WITH 470 Ω RESISTOR
 - ⊖ INDICATES END OF SHIELD NOT CONNECTED.
 - CHASSIS GROUND SUPPLIED BY CUSTOMER THROUGH THE BX CONNECTOR.
 - SL-BL DENOTES SLOW-BLOWING FUSE.

SHIELD CIRCUIT LAYOUT
(SEE NOTE 10)



GROUND CIRCUIT LAYOUT



SHEET 2 OF 2

SCHEMATIC WIRING DIAGRAM FOR SPOOK PRINTER KSR

APPROVALS

D AND B: [Signature]
E OF M: [Signature]

E-NUMBER
PROD. NO. 7545 WD

DATE: -
P.D. FILE NO 75-30.65 AA
DRAWN L.J.F. CHKD [Signature]
ENGD C.F.C. APPD [Signature]

TELETYPE CORPORATION
7545 WD