

ISSUE	DATE	AUTH. NO.
1	4-8-65	15879-R
2	8-2-65	87638
3	1-1-66	90173
4	1-25-66	89927

- NO NOTES
- WIRING LEGEND:

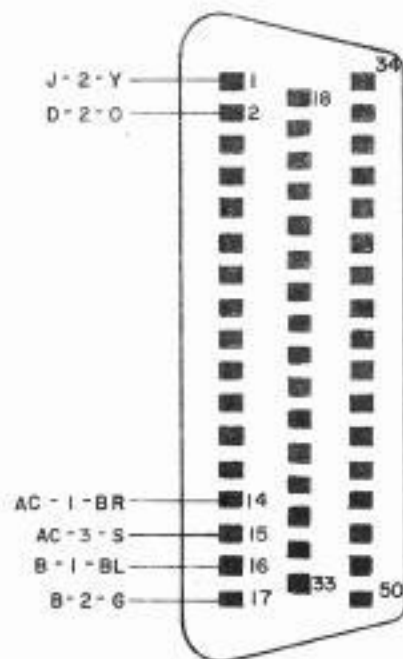
┌ DISTANT TERMINATING AREA
└ DISTANT TERMINATING DESIGNATION

A-1-W-BL

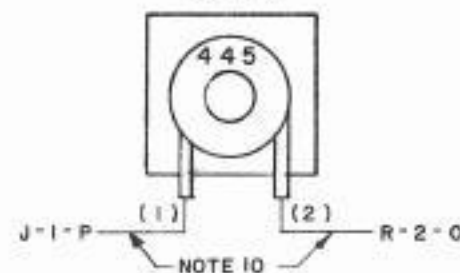
└ WIRE COLOR CODE
 - COLOR CODE:

BK	BLACK	Y	YELLOW
BR	BROWN	P	PURPLE
BL	BLUE	O	ORANGE
S	SLATE	G	GREEN
R	RED	W	WHITE
 - ALL COMPONENTS VIEWED FROM WIRING END.
 - TERMINAL DESIGNATIONS SHOWN IN PARENTHESES ARE FOR REFERENCE ONLY AND ARE NOT MARKED ON COMPONENTS.
 - REFER TO 7545WD OR 7546WD FOR SCHEMATIC WIRING DIAGRAM.
 - FOR TELETYPE PERSONNEL REFERENCE: SPEC. 61,026S
 - 151329 SWITCHES ARE MOUNTED IN TANDEM AFTER ASSEMBLY.
 - RESISTANCE VALUE IN OHMS UNLESS OTHERWISE SPECIFIED.
 - ASSOCIATED CABLE ASSEMBLIES:
310072
310073
 - COVER TERMINALS WITH 155750 INSULATING SLEEVE.
 - COVER 153631 SPARK SUPPRESSION NETWORK WITH 178871 INSULATING SLEEVE.
COVER SPARK SUPPRESSOR LEADS WITH 178872 INSULATING SLEEVE.
SPlice SPARK SUPPRESSOR, 144932 SOLENOID AND 3110072 CABLE LEADS, COVER SPLICES WITH SUITABLE ELECTRICAL TAPE.
(NEW STYLE, FULLY INSULATED, 153631 SPARK SUPPRESSION NETWORKS DO NOT NEED INSULATING SLEEVES.)

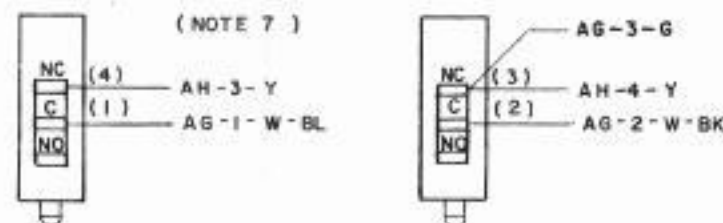
R
CONNECTOR PLUG
192013



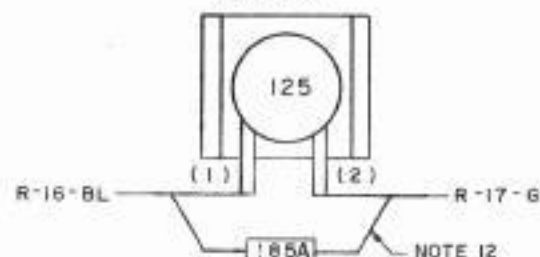
D
FIGS. SHIFT MAGNET
263M



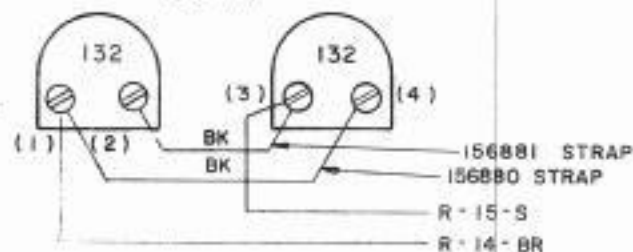
AH
MODE CONTROL SWITCH
151329



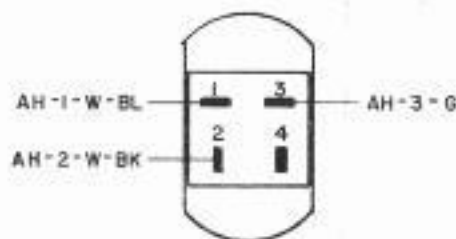
B
LINE FEED SOLENOID
144932



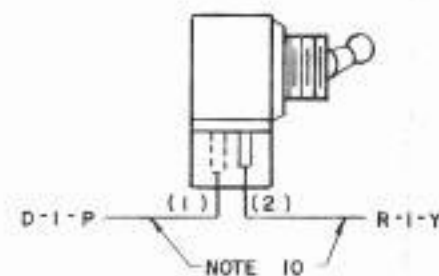
AC
SELECTOR MAGNETS
254M



AG
CONNECTOR PLUG
111776



J
FIGS. SHIFT
DISABLING SWITCH
98736



ACTUAL
WIRING DIAGRAM
FOR LP130 OR
LP48,52,53 WITH
199200
MOD. KIT
(MODEL 28 PRINTER)

APPROVALS

D AND W E OF M

K-NUMBER

PROD. NO. 7540WD

DATE:

P.D. FILE NO. 74-30.65A.1

DRAWN L.J.F. CHKD *[Signature]*

ENGD. C.F.C. APPD. *[Signature]*

TELETYPE
CORPORATION

4 7540 WD