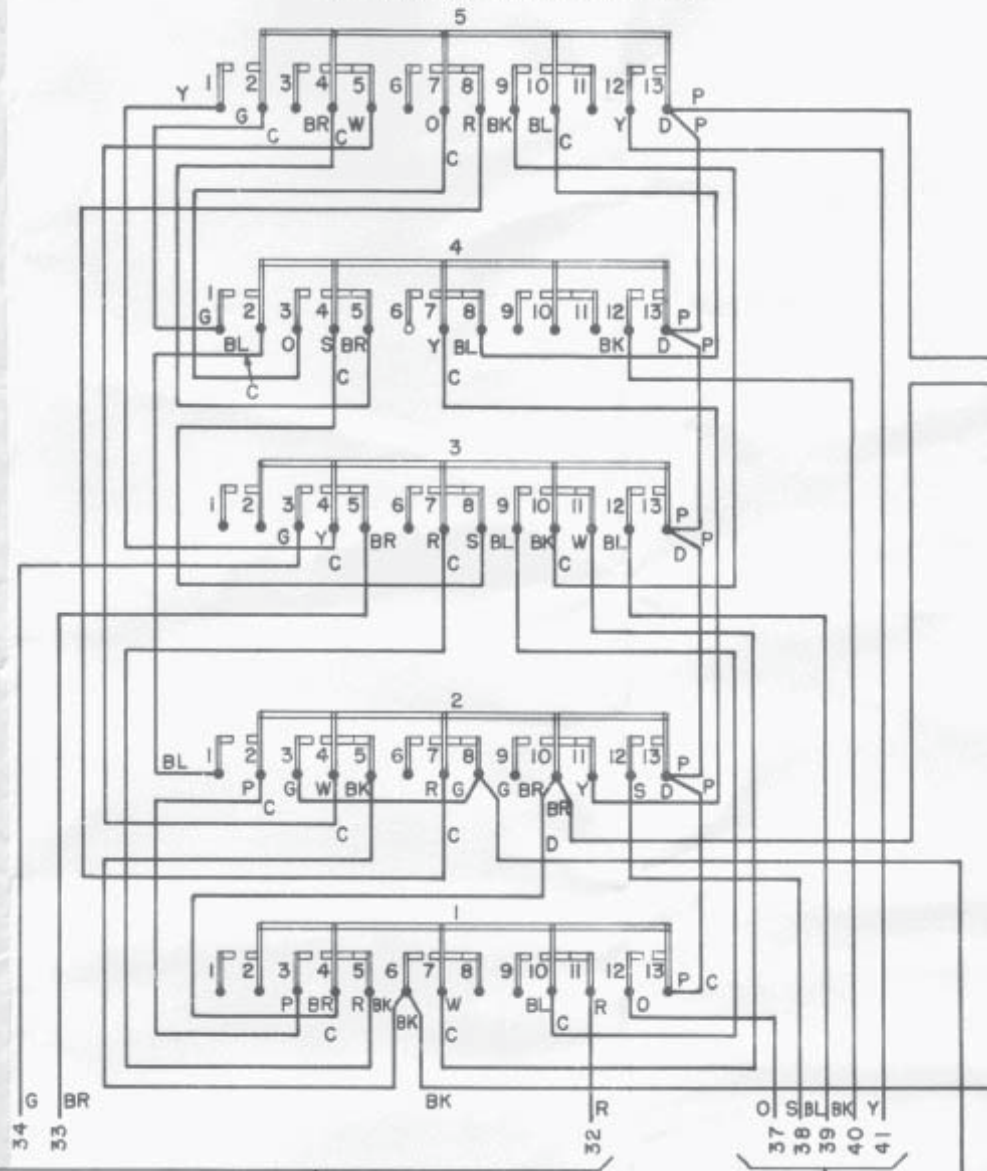


NO	NOTES																																																																														
1	<p>WIRE COLOR CODE (SOLID COLORS MAY BE SOLID OR TRACER IN WHITE WIRE)</p> <table border="0"> <tr> <td>W</td><td>WHITE</td><td>BK</td><td>BLACK</td><td>R-O</td><td>RED-ORANGE</td></tr> <tr> <td>W-BL</td><td>WHITE-BLUE</td><td>BK-G</td><td>BLACK-GREEN</td><td>R-BR</td><td>RED-BROWN</td></tr> <tr> <td>W-BK</td><td>WHITE-BLACK</td><td>BK-R</td><td>BLACK-RED</td><td>Y</td><td>YELLOW</td></tr> <tr> <td>W-G</td><td>WHITE-GREEN</td><td>BK-Y</td><td>BLACK-YELLOW</td><td>Y-O</td><td>YELLOW-ORANGE</td></tr> <tr> <td>W-R</td><td>WHITE-RED</td><td>BK-O</td><td>BLACK-ORANGE</td><td>Y-BR</td><td>YELLOW-BROWN</td></tr> <tr> <td>W-Y</td><td>WHITE-YELLOW</td><td>G</td><td>GREEN</td><td>O</td><td>ORANGE</td></tr> <tr> <td>W-O</td><td>WHITE-ORANGE</td><td>G-R</td><td>GREEN-RED</td><td>O-BR</td><td>ORANGE-BROWN</td></tr> <tr> <td>W-BR</td><td>WHITE-BROWN</td><td>G-Y</td><td>GREEN-YELLOW</td><td>BR</td><td>BROWN</td></tr> <tr> <td>BL</td><td>BLUE</td><td>G-O</td><td>GREEN-ORANGE</td><td>P</td><td>PURPLE (RED & BLUE TRACER)</td></tr> <tr> <td>BL-G</td><td>BLUE-GREEN</td><td>G-BR</td><td>GREEN-BROWN</td><td>S</td><td>SLATE</td></tr> <tr> <td>BL-R</td><td>BLUE-RED</td><td>R</td><td>RED</td><td></td><td></td></tr> <tr> <td>BL-Y</td><td>BLUE-YELLOW</td><td>R-Y</td><td>RED-YELLOW</td><td></td><td></td></tr> <tr> <td>BL-O</td><td>BLUE-ORANGE</td><td></td><td></td><td></td><td></td></tr> </table>	W	WHITE	BK	BLACK	R-O	RED-ORANGE	W-BL	WHITE-BLUE	BK-G	BLACK-GREEN	R-BR	RED-BROWN	W-BK	WHITE-BLACK	BK-R	BLACK-RED	Y	YELLOW	W-G	WHITE-GREEN	BK-Y	BLACK-YELLOW	Y-O	YELLOW-ORANGE	W-R	WHITE-RED	BK-O	BLACK-ORANGE	Y-BR	YELLOW-BROWN	W-Y	WHITE-YELLOW	G	GREEN	O	ORANGE	W-O	WHITE-ORANGE	G-R	GREEN-RED	O-BR	ORANGE-BROWN	W-BR	WHITE-BROWN	G-Y	GREEN-YELLOW	BR	BROWN	BL	BLUE	G-O	GREEN-ORANGE	P	PURPLE (RED & BLUE TRACER)	BL-G	BLUE-GREEN	G-BR	GREEN-BROWN	S	SLATE	BL-R	BLUE-RED	R	RED			BL-Y	BLUE-YELLOW	R-Y	RED-YELLOW			BL-O	BLUE-ORANGE				
W	WHITE	BK	BLACK	R-O	RED-ORANGE																																																																										
W-BL	WHITE-BLUE	BK-G	BLACK-GREEN	R-BR	RED-BROWN																																																																										
W-BK	WHITE-BLACK	BK-R	BLACK-RED	Y	YELLOW																																																																										
W-G	WHITE-GREEN	BK-Y	BLACK-YELLOW	Y-O	YELLOW-ORANGE																																																																										
W-R	WHITE-RED	BK-O	BLACK-ORANGE	Y-BR	YELLOW-BROWN																																																																										
W-Y	WHITE-YELLOW	G	GREEN	O	ORANGE																																																																										
W-O	WHITE-ORANGE	G-R	GREEN-RED	O-BR	ORANGE-BROWN																																																																										
W-BR	WHITE-BROWN	G-Y	GREEN-YELLOW	BR	BROWN																																																																										
BL	BLUE	G-O	GREEN-ORANGE	P	PURPLE (RED & BLUE TRACER)																																																																										
BL-G	BLUE-GREEN	G-BR	GREEN-BROWN	S	SLATE																																																																										
BL-R	BLUE-RED	R	RED																																																																												
BL-Y	BLUE-YELLOW	R-Y	RED-YELLOW																																																																												
BL-O	BLUE-ORANGE																																																																														
2	<p>ASSOCIATED CABLES, CORDS, AND STRAP WIRES</p> <table border="0"> <tr> <td>—————</td><td>117432</td><td>BASE CABLE</td><td>95065</td><td>BRASS STRAP</td></tr> <tr> <td>-----</td><td>123540</td><td>S-P TERM. BLOCK CABLE</td><td>103161</td><td>WIRE STRAP</td></tr> <tr> <td>-----</td><td>103117</td><td>POWER CABLE</td><td>92334</td><td>WIRE STRAP</td></tr> <tr> <td>-----</td><td>102870</td><td>POWER CORD</td><td></td><td></td></tr> <tr> <td>-----</td><td>117433</td><td>CORD WITH 33 PRONG PLUG</td><td></td><td></td></tr> <tr> <td>-----</td><td>117744</td><td>PULLBAR CONTACT CABLE</td><td></td><td></td></tr> </table>	—————	117432	BASE CABLE	95065	BRASS STRAP	-----	123540	S-P TERM. BLOCK CABLE	103161	WIRE STRAP	-----	103117	POWER CABLE	92334	WIRE STRAP	-----	102870	POWER CORD			-----	117433	CORD WITH 33 PRONG PLUG			-----	117744	PULLBAR CONTACT CABLE																																																		
—————	117432	BASE CABLE	95065	BRASS STRAP																																																																											
-----	123540	S-P TERM. BLOCK CABLE	103161	WIRE STRAP																																																																											
-----	103117	POWER CABLE	92334	WIRE STRAP																																																																											
-----	102870	POWER CORD																																																																													
-----	117433	CORD WITH 33 PRONG PLUG																																																																													
-----	117744	PULLBAR CONTACT CABLE																																																																													
3	<p>CONNECTORS SHOWN FROM PRONG SIDE TERMINAL BLOCKS SHOWN FROM SCREW HEAD SIDE. EQUIPMENT SHOWN DOTTED IS ON OPPOSITE SIDE.</p>																																																																														
4	<p>SYMBOLS</p> <ul style="list-style-type: none"> —*— DENOTES: SPLICE & TAPE WIRE. ⊙ 21A DENOTES: TERMINAL NUMBER ON "A" TERMINAL BLOCK. ⊙ 21B DENOTES: TERMINAL NUMBER ON "B" TERMINAL BLOCK. ⊥ 21 DENOTES: PRONG NUMBER ON 33 PRONG CONNECTOR. C DENOTES: TERMINAL END OF CONTACT SPRING COVERED WITH RM 60025 TUBING. D DENOTES: TERMINAL END OF CONTACT SPRING COVERED WITH RM 60027 TUBING. 																																																																														
5	<table border="0"> <tr> <td data-bbox="305 1079 389 1218">FRXD 9 (BELL 14F)</td> <td data-bbox="397 1079 1490 1218">EQUIPPED WITH PULLBAR OPERATED CONTACTS & 117744 CABLE. CONNECT THE GREEN-ORANGE (G-O) WIRE FROM TERMINAL 22 OF THE 33 PRONG CONNECTOR TO TERMINAL 42 OF "A" BLOCK FOR INCOMING LINE MACHINE OR TO TERMINAL 28 OF "B" BLOCK FOR OUTGOING LINE, OR MULTIPLE ADDRESS AND INTERCEPT MACHINES. UNITS WHEN SHIPPED WILL BE WIRED AS SHOWN FOR INCOMING LINE OPERATION. STRAP 34A TO 29B.</td> </tr> <tr> <td data-bbox="305 1226 389 1310">FRXD 10 (BELL 14G)</td> <td data-bbox="397 1226 1490 1310">PULLBAR OPERATED CONTACTS & 117744 CABLE NOT USED. CONNECT THE GREEN-ORANGE (G-O) WIRE FROM TERMINAL 22 OF 33 PRONG CONNECTOR TO TERMINAL 28 OF "B" BLOCK UNIT SO WIRED WHEN SHIPPED. OMIT STRAP BETWEEN 34A & 29B.</td> </tr> </table>	FRXD 9 (BELL 14F)	EQUIPPED WITH PULLBAR OPERATED CONTACTS & 117744 CABLE. CONNECT THE GREEN-ORANGE (G-O) WIRE FROM TERMINAL 22 OF THE 33 PRONG CONNECTOR TO TERMINAL 42 OF "A" BLOCK FOR INCOMING LINE MACHINE OR TO TERMINAL 28 OF "B" BLOCK FOR OUTGOING LINE, OR MULTIPLE ADDRESS AND INTERCEPT MACHINES. UNITS WHEN SHIPPED WILL BE WIRED AS SHOWN FOR INCOMING LINE OPERATION. STRAP 34A TO 29B.	FRXD 10 (BELL 14G)	PULLBAR OPERATED CONTACTS & 117744 CABLE NOT USED. CONNECT THE GREEN-ORANGE (G-O) WIRE FROM TERMINAL 22 OF 33 PRONG CONNECTOR TO TERMINAL 28 OF "B" BLOCK UNIT SO WIRED WHEN SHIPPED. OMIT STRAP BETWEEN 34A & 29B.																																																																										
FRXD 9 (BELL 14F)	EQUIPPED WITH PULLBAR OPERATED CONTACTS & 117744 CABLE. CONNECT THE GREEN-ORANGE (G-O) WIRE FROM TERMINAL 22 OF THE 33 PRONG CONNECTOR TO TERMINAL 42 OF "A" BLOCK FOR INCOMING LINE MACHINE OR TO TERMINAL 28 OF "B" BLOCK FOR OUTGOING LINE, OR MULTIPLE ADDRESS AND INTERCEPT MACHINES. UNITS WHEN SHIPPED WILL BE WIRED AS SHOWN FOR INCOMING LINE OPERATION. STRAP 34A TO 29B.																																																																														
FRXD 10 (BELL 14G)	PULLBAR OPERATED CONTACTS & 117744 CABLE NOT USED. CONNECT THE GREEN-ORANGE (G-O) WIRE FROM TERMINAL 22 OF 33 PRONG CONNECTOR TO TERMINAL 28 OF "B" BLOCK UNIT SO WIRED WHEN SHIPPED. OMIT STRAP BETWEEN 34A & 29B.																																																																														
6	FRXD 9 & 10 NOT EQUIPPED WITH TRANSMITTER STOP OR MOTOR SWITCH.																																																																														
7	<p>TERMINAL END OF CONTACT SPRING COVERED WITH:</p> <ul style="list-style-type: none"> "C" — RM 60025 TUBING (APPROX. 1 INCH.) "D" — RM 60027 TUBING (APPROX. 1 INCH.) 																																																																														
8	COVER LEADS AT GOVERNOR RESISTOR TERMINALS WITH HIGH TEMPERATURE TUBING 60279 RM.																																																																														
9	FOR OPERATION AT 100 WPM THE SELECTOR MAGNET COILS MUST BE WIRED IN PARALLEL AND REQUIRE 0.60 AMPERES LINE CURRENT.																																																																														

SENSING CONTACTS (NOTE 7)

DISTRIBUTOR CO



STRAP WIRE

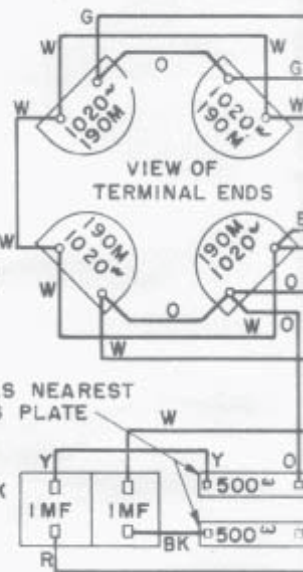
DISTR. AUX. CONTACT

TRANSMITTER CLUTCH M (ADJACENT BASE CAS)

DISTRIBUTOR CLUTCH MAGNETS

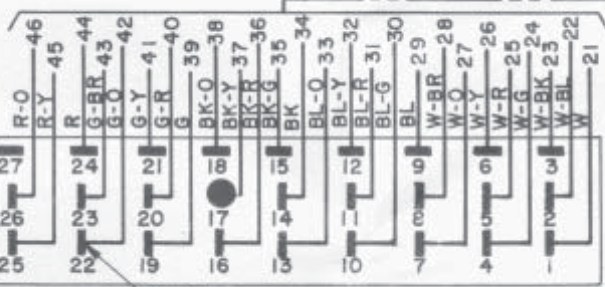
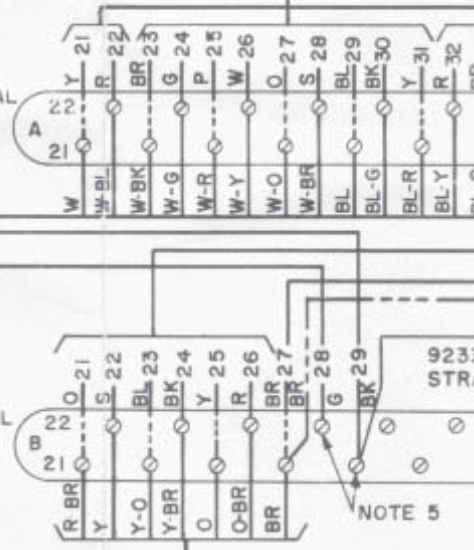
TERMINALS NEAREST MOUNTING PLATE

CONTACT SPARK PROTECTION



TERMINAL BLOCK "A"

TERMINAL BLOCK "B"



NOTE 5

CORD WITH 33 PRONG CONNECTOR

NOTE 5

BOTTOM VIEW - ACTUAL WIRING

DISTRIBUTOR CONTACTS

CONTACT NEAREST FRONT EDGE OF CASTING

TRANSMITTER AUXILIARY CONTACTS (PILE-UP NEAREST BASE CASTING)

TRANSMITTER STOP SWITCH

NOTE 6

MOTOR SWITCH

TRANSMITTER CLUTCH MAGNETS (NEAREST BASE CASTING)

VIEW OF TERMINAL ENDS

500Ω

500Ω

DISTRIBUTOR CLUTCH RELEASE CONTACTS

TAPE-OUT CONTACT

TRANS STOP CONTACT

TAPE FEED INDICATOR CONTACTS

103117 CABLE

UNIVERSAL CONTACTS

STARTING WINDING

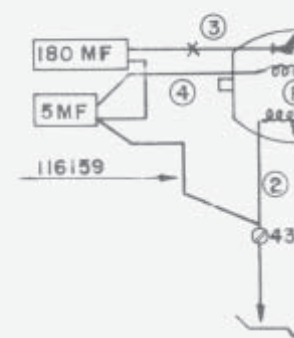
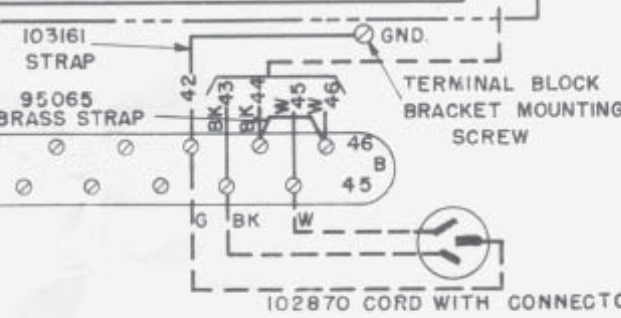
RUNNING WINDING

CUTOUT SWITCH SYNCHRONOUS MOTOR

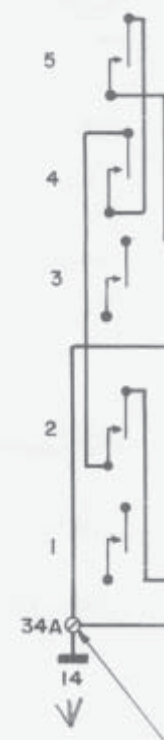
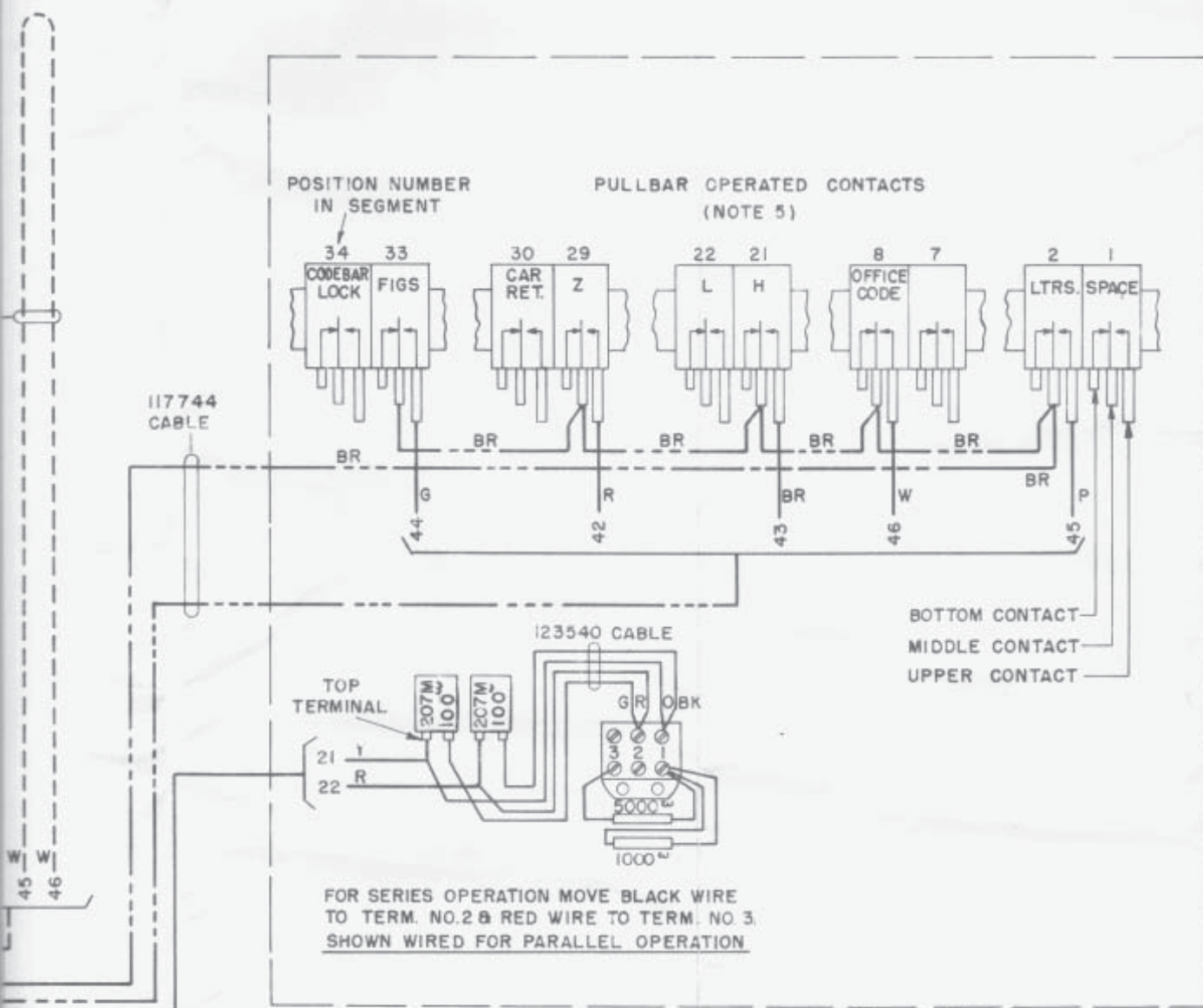
115 V. 60~ SYN
EL, E, M, E, N, EP
L, J, NB, NC, ND
115 V. 50~ SYN
LD, MT, NF,

W BR G O P Y W P S BL BK
26 23 24 27 35 31 36 25 28 29 30

W-BR BL BL-G BL-R BL-Y BL-O BK BK-G BK-R BK-Y BK-O G G-R G-Y G-O R R-BR R-Y R-O
27 28 29 30 31 32 33 34 35 36 37 38 39 40 41 42 43 44 45 46
NOTE-5

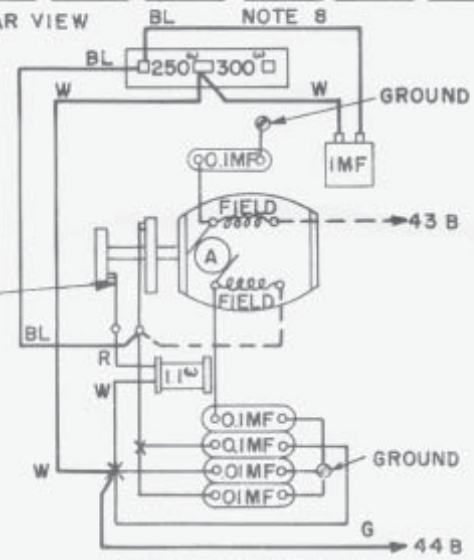


MOTOR SWITCH

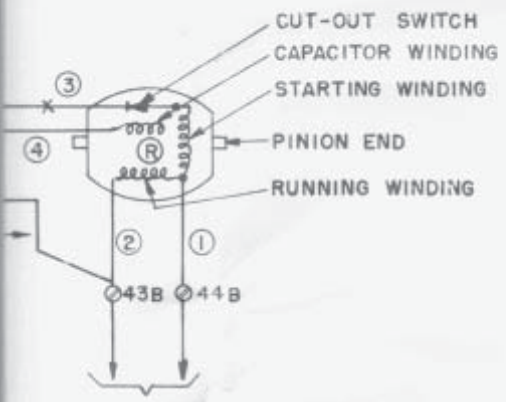


FOR SERIES OPERATION MOVE BLACK WIRE TO TERM. NO.2 & RED WIRE TO TERM. NO.3.
 SHOWN WIRED FOR PARALLEL OPERATION

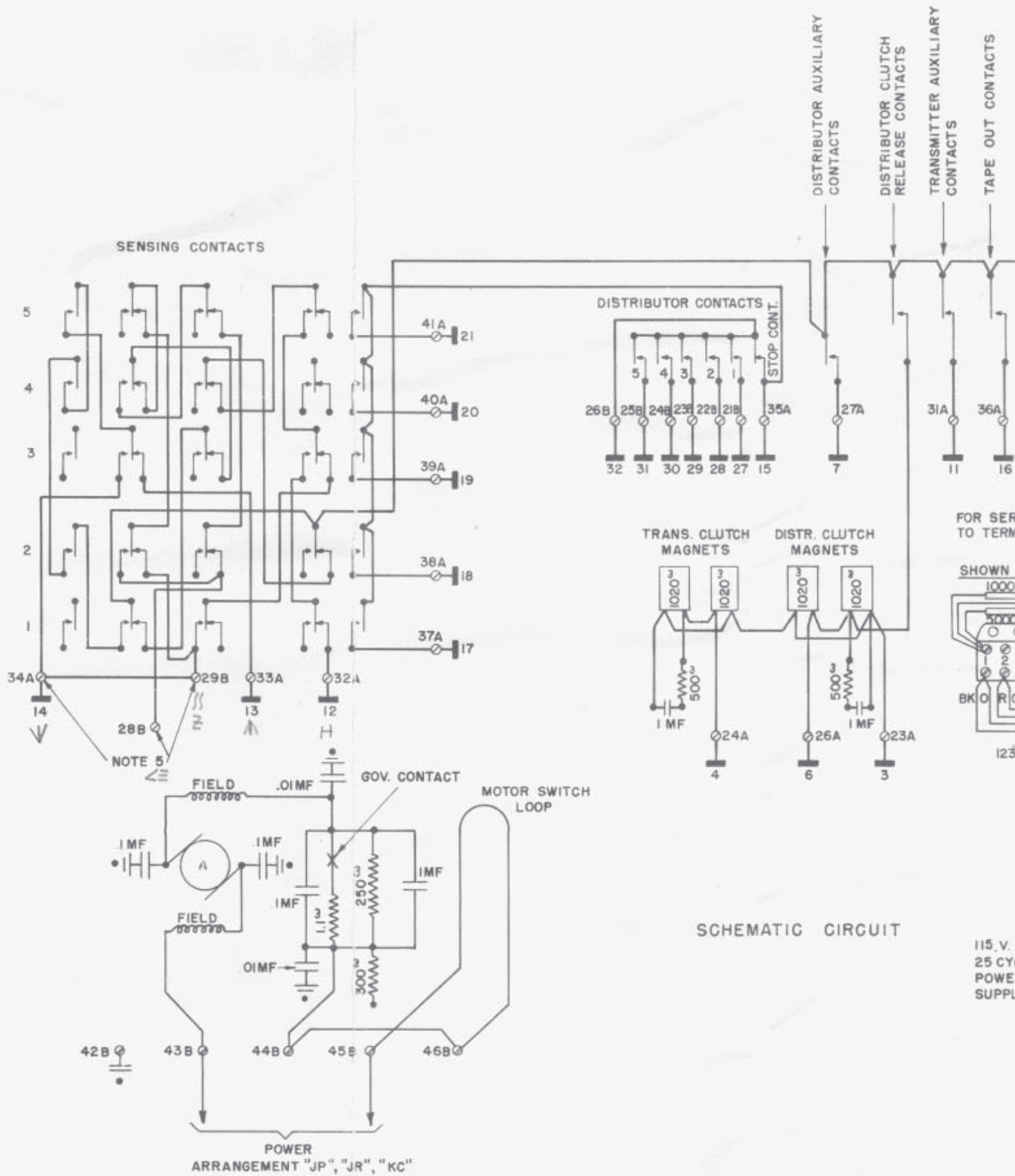
TOP REAR VIEW

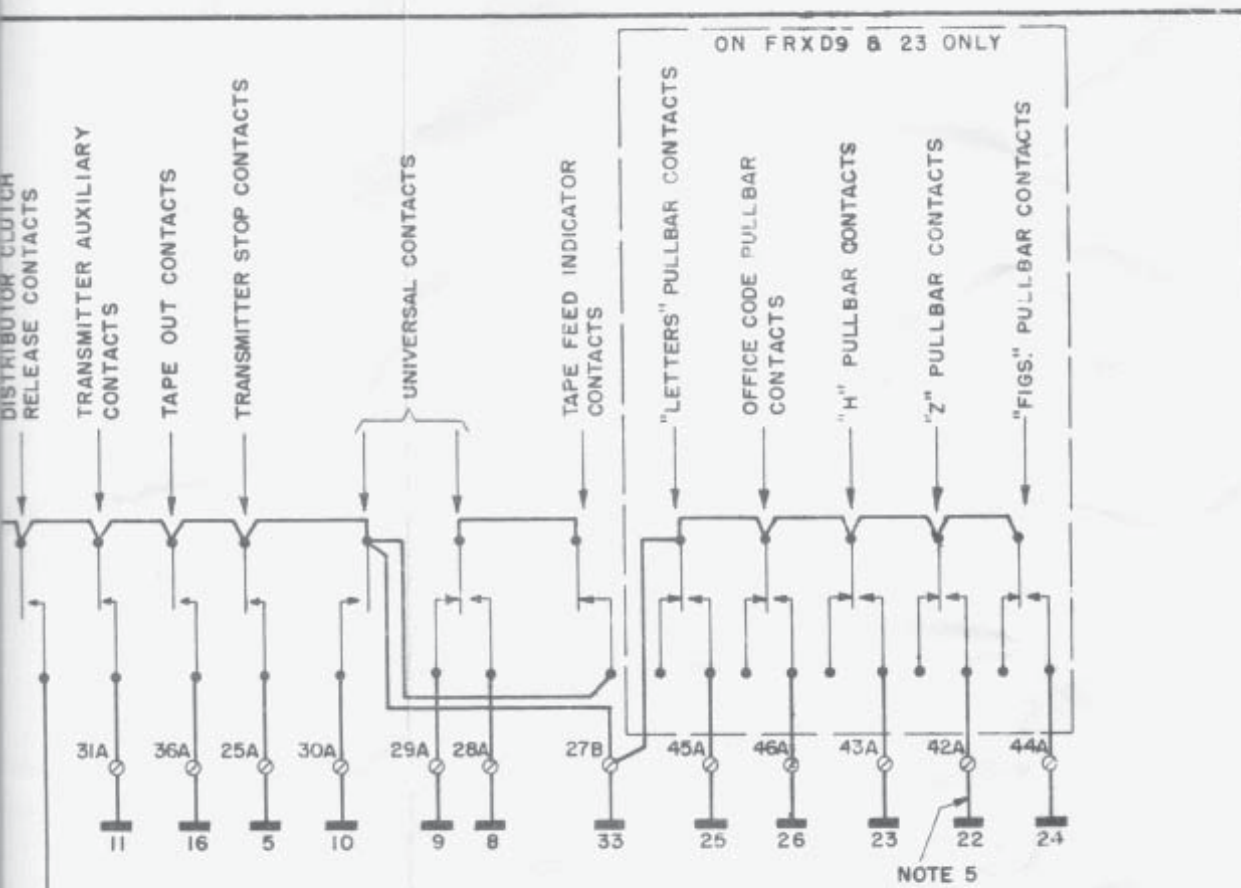


A.C. GOVERNED MOTOR
 ARRANGEMENT "JP", "JR", "KC"
 106896 CABLE



115V 25 CYCLE
 SYNCHRONOUS MOTOR
 ARRANGEMENT "JV" "KA"





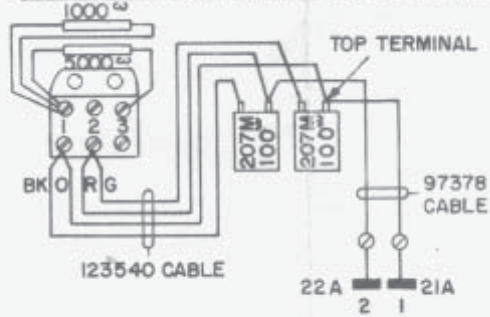
REVISIONS:		
K	11-27-53	58030
L	10-28-55	62043
M	6-21-56	63443
N	2-6-57	64603
P	12-9-57	65858
Q	12-17-57	65877
R	2-18-58	66094
S	9-26-58	66675
T	1-7-59	66969
U	4-9-59	67231

ON FRXD9 & 23 ONLY

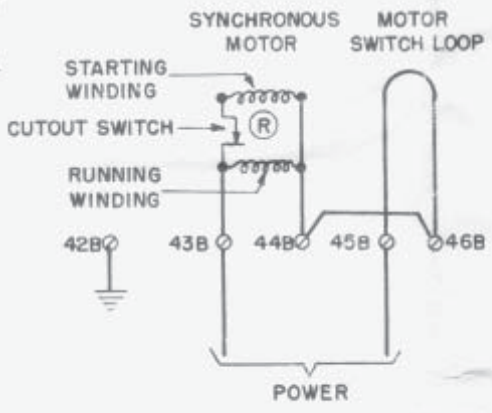
NOTE 5

FOR SERIES OPERATION MOVE BLACK WIRE TO TERM. NO. 2 & RED WIRE TO TERM. NO. 3

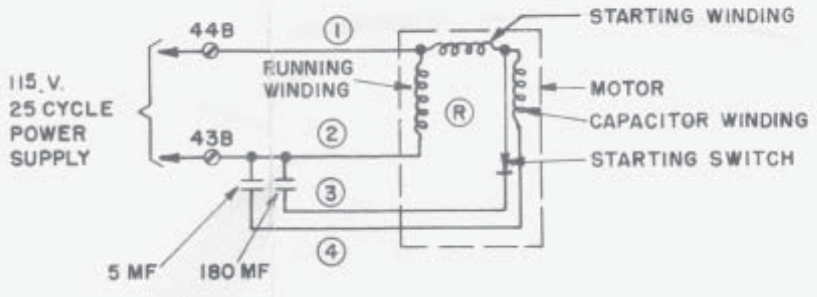
SHOWN WIRED FOR PARALLEL OPERATION



(NOTE 9)
ARRG'T NB,NC



(115V-60CY) ARRANGEMENT EL,EM,EN,EP,LJ,NB,NC,ND
(115V-50CY) " LD,MT,NF



115V. 25 CYCLE MOTOR
ARRANGEMENT "JV" "KA"

2496 WD
8-14-47

WIRING DIAGRAM
MODEL 14
REPERFORATOR
TRANSMITTER
FRXD 9, 10, 20, 23, 24

MOTOR ARR:
EP, JV, KA, JP, JR, KC,
EL, EM, EN, MT, LJ, NB,
NC, ND, NF, LD

DRAWN: G.A.R.	APPROVED:
ENGR'D: R.S.G.	<i>[Signature]</i>
CHECKED: R.W.D	
FILE: 1-116.7AA	

TELETYPE CORPORATION