

35 NON-TYPING REPERFORATOR (LRPE)

PARTS

FIGURE	CONTENTS	PAGE	FIGURE	CONTENTS	PAGE
1	Main Plate - One Punch Unit	2	14	170196 Modification Kit to add Power Drive to Backspace	
2	Main Plate - Duo Punch Unit	3		(Continued)	15
3	Frame Mechanism	4	15	343954 Modification Kit to Provide Eccentric Drive Mechanism Cover	15
4	Main Shaft - 1 Cycle	5	16	Slack Tape Mechanism	16
5	Punch Front Plate Mechanism	6	17	198760 Timing Contact Assembly	17
6	Punch Rear Plate Mechanism	7	18	Code Reading Contacts	18
7	Punch Blocks and Chad Chutes	8	19	159381 Modification Kit to Provide Auxiliary Timing Contacts	18
8	Punch Bail Mechanism	9	20	Components for Quick Disconnect Feature	19
9	Rocker Bail Mechanism	10		Numerical Index	20
10	Selecting Mechanism	11			
11	Range Finder Mechanism	12			
12	Selecting Magnet Mechanism	13			
13	170196 Modification Kit to add Power Drive to Backspace	14			

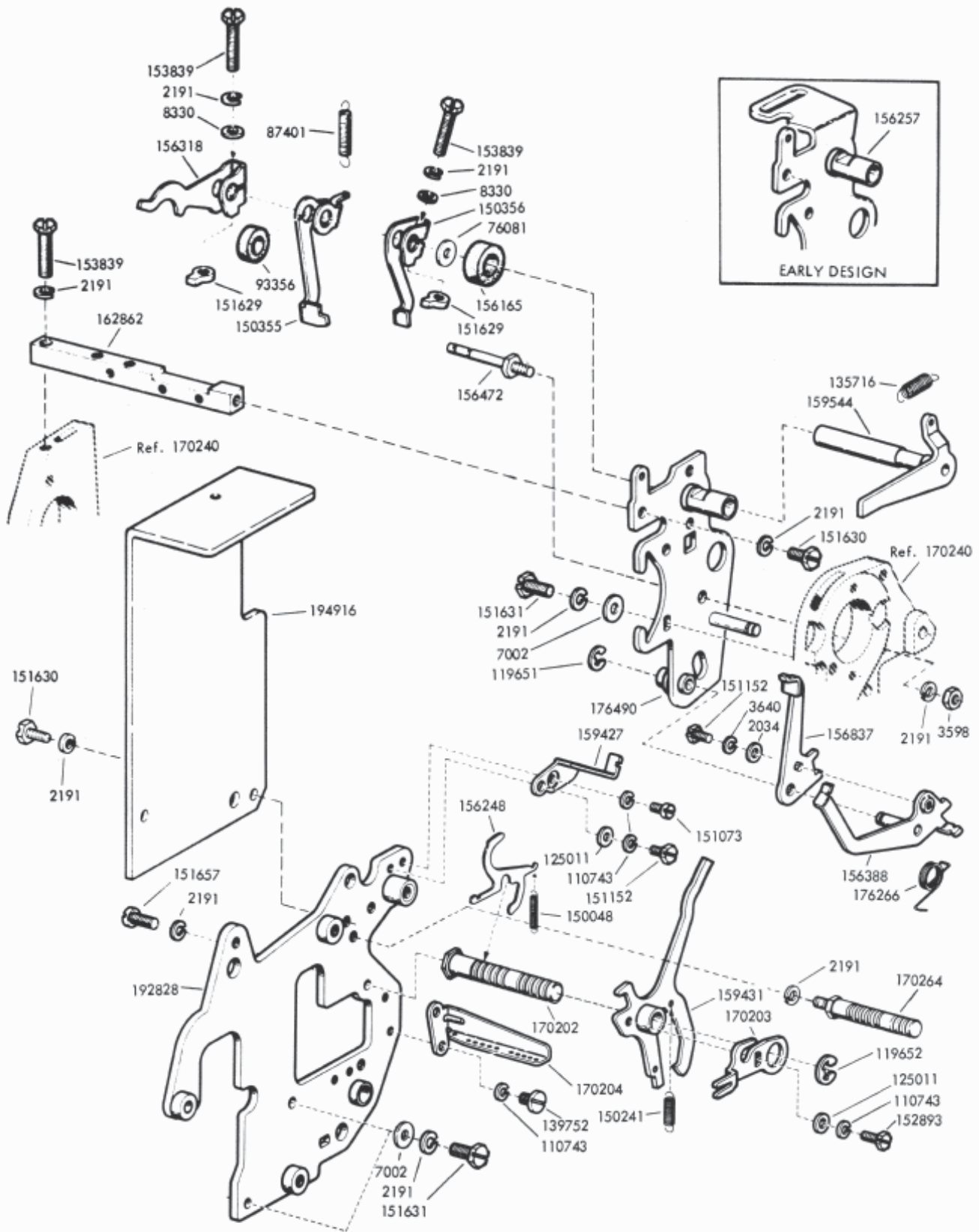
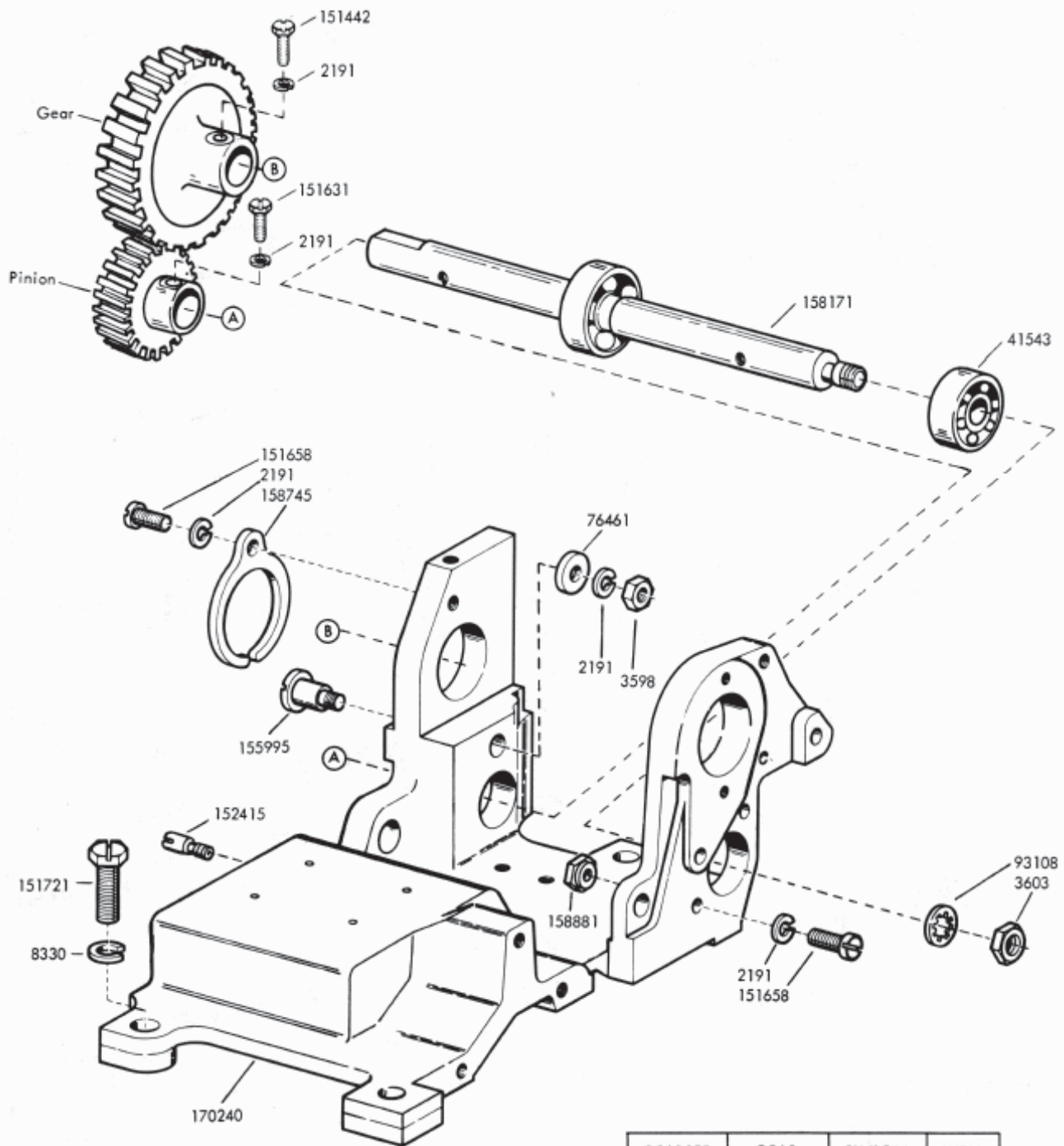


FIGURE 1. MAIN PLATE - ONE PUNCH UNIT





GEARSET	GEAR	PINION	WPM
163025	163018-44T	163015-28T	100
315866	315862-59T	315863-23T	114

FIGURE 3. FRAME MECHANISM

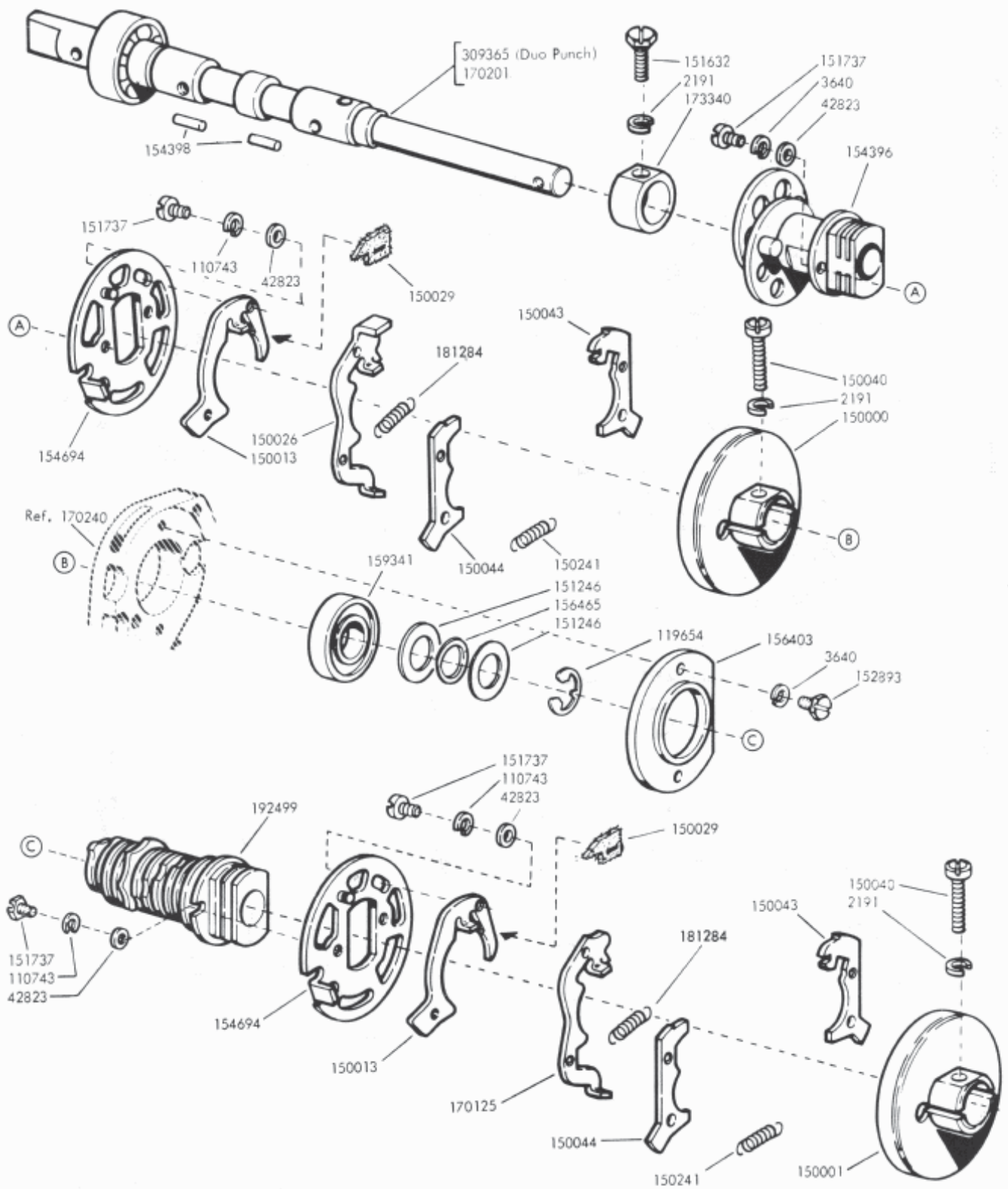
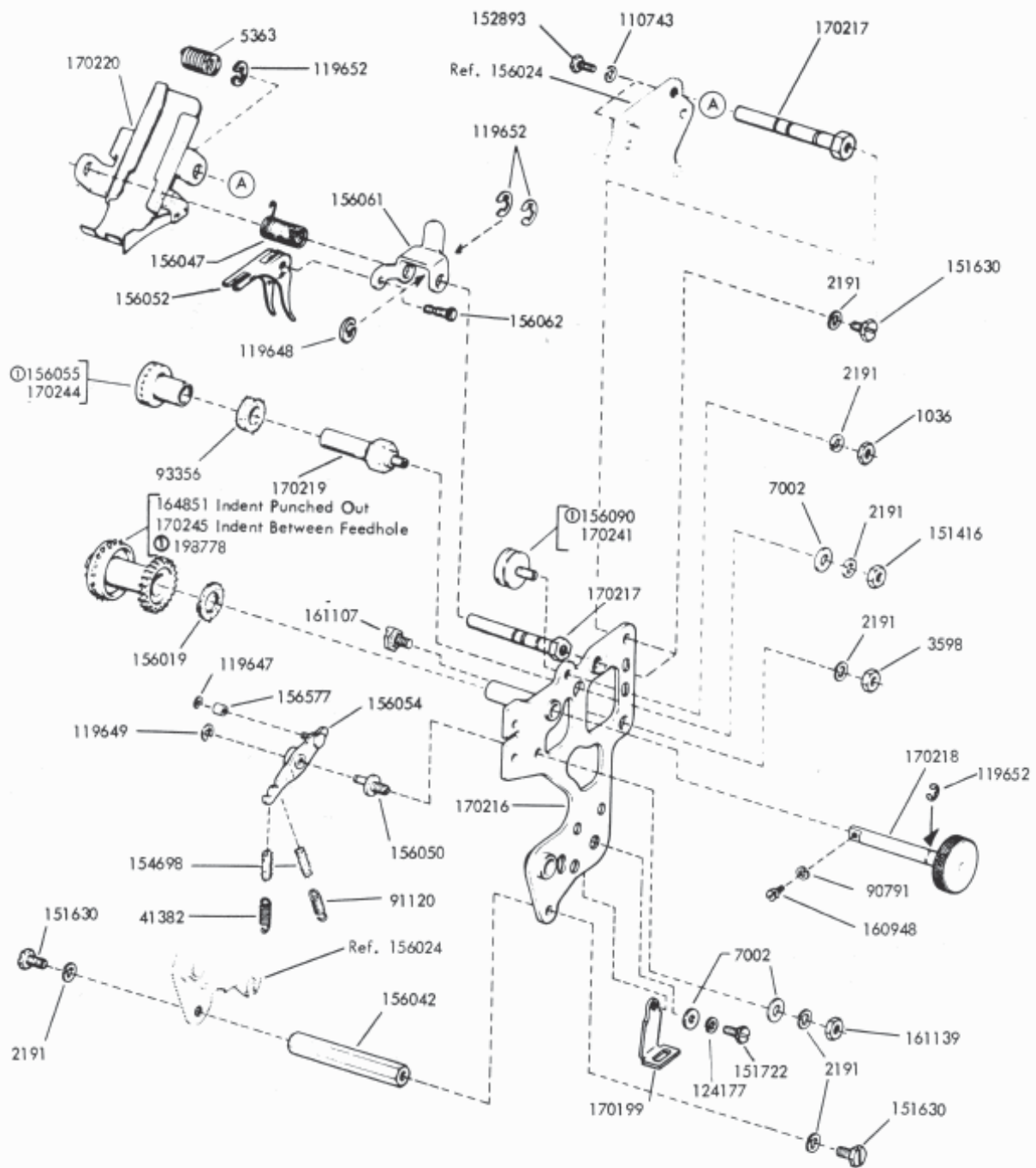


FIGURE 4. MAIN SHAFT - 1 CYCLE



Ⓞ Peculiar to Delete Punch Mechanism

FIGURE 5. PUNCH FRONT PLATE MECHANISM

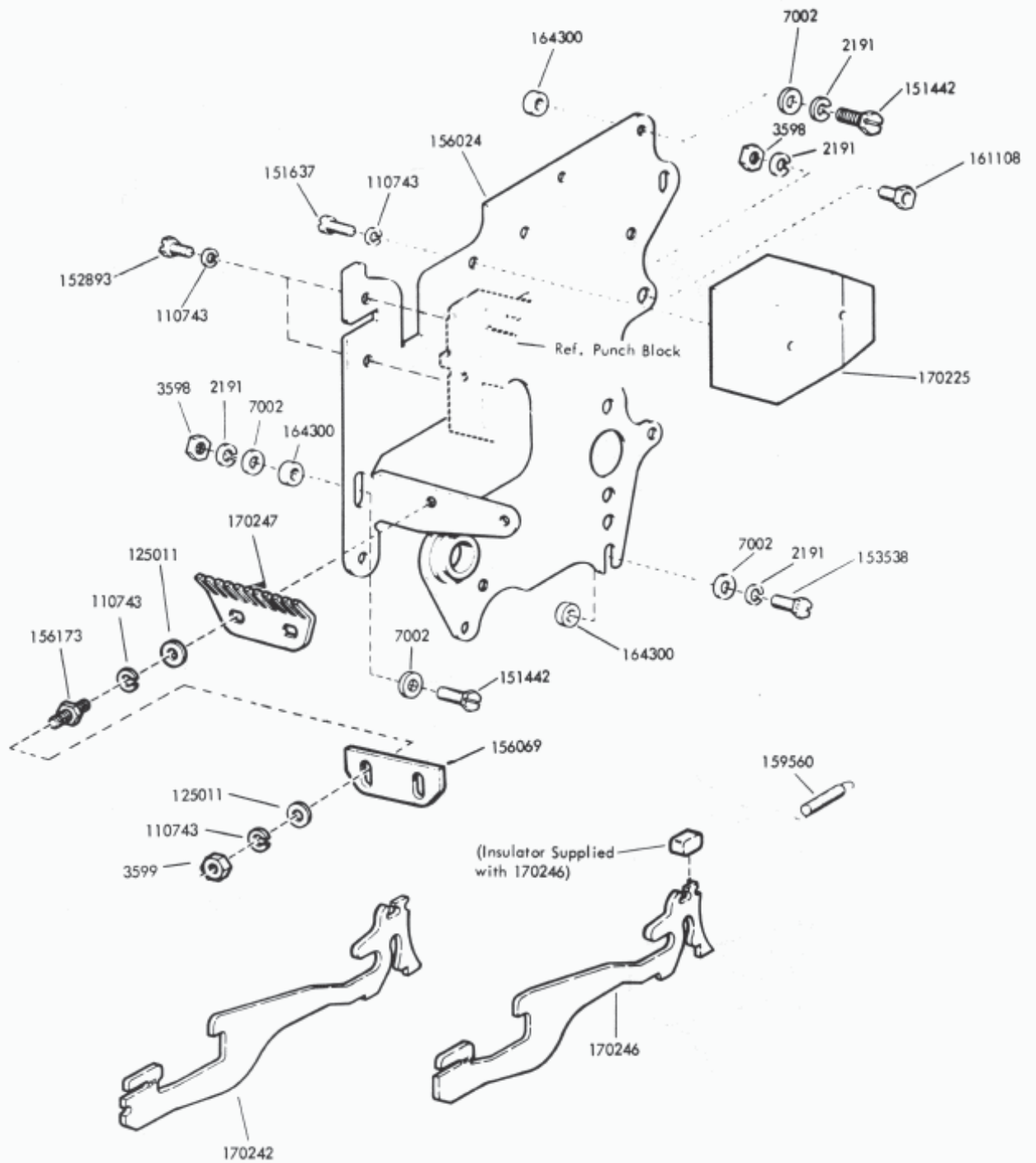
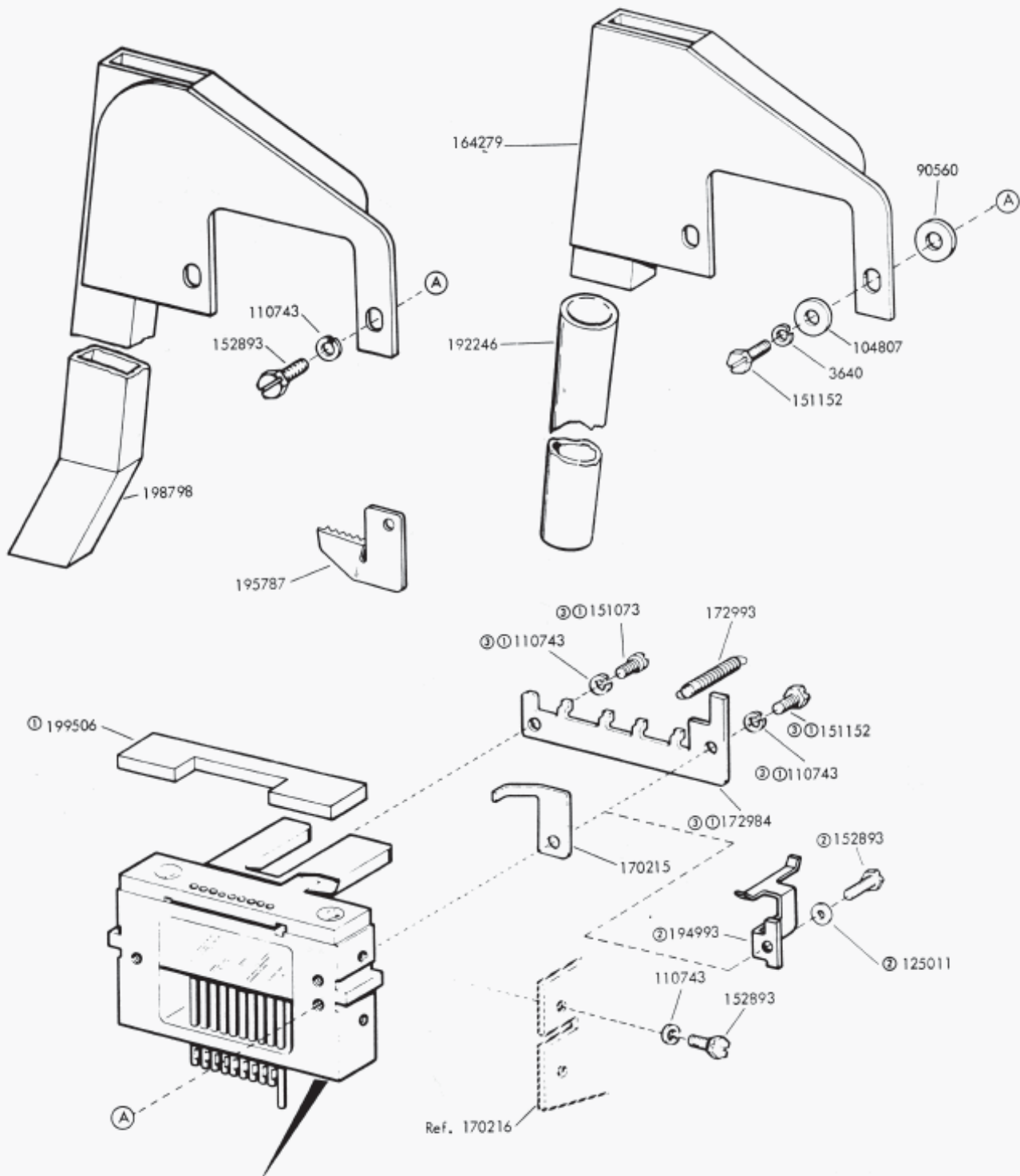


FIGURE 6. PUNCH REAR PLATE MECHANISM



Due to special assembly processes, it is recommended that Teletype Corporation be contacted to determine if part replacement or repair is possible on this portion of the Punch Block Assembly.

① 170210 Punch Block Assembly

② 194992 Modification Kit to provide a Tape Guide Specification 501885.

③ 198781 Delete Punch Block Assembly

FIGURE 7. PUNCH BLOCKS AND CHAD CHUTES



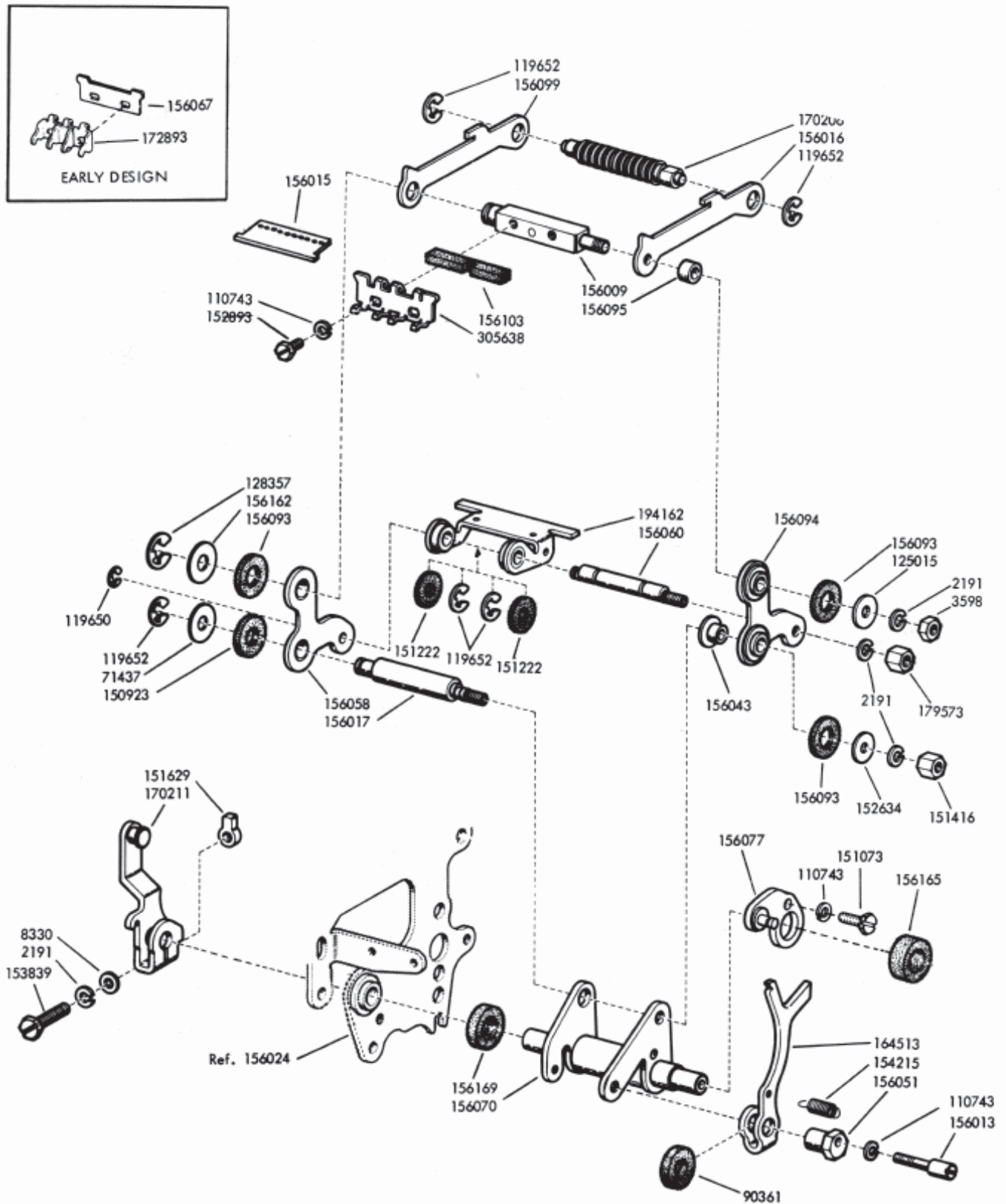


FIGURE 8. PUNCH BAIL MECHANISM

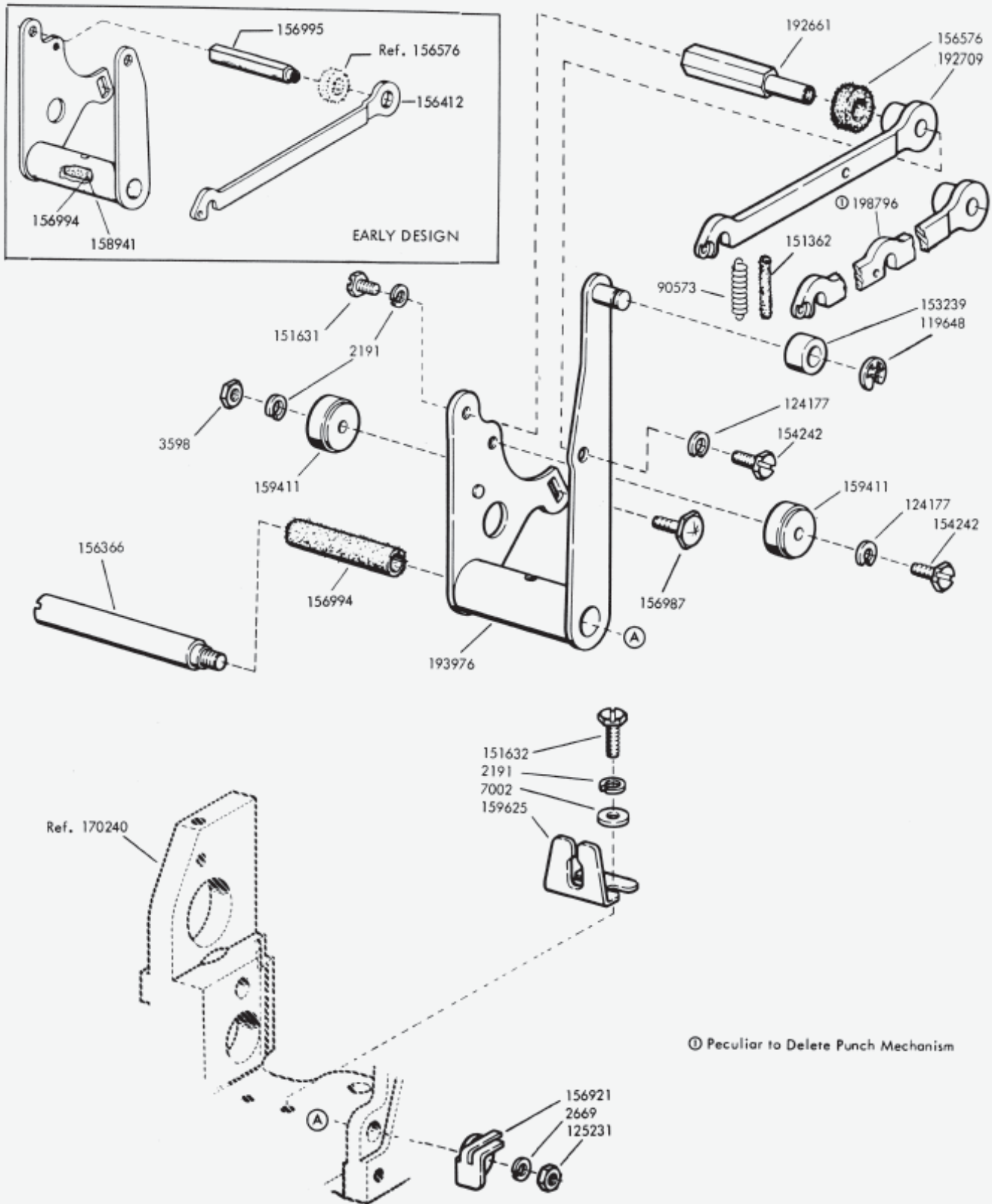
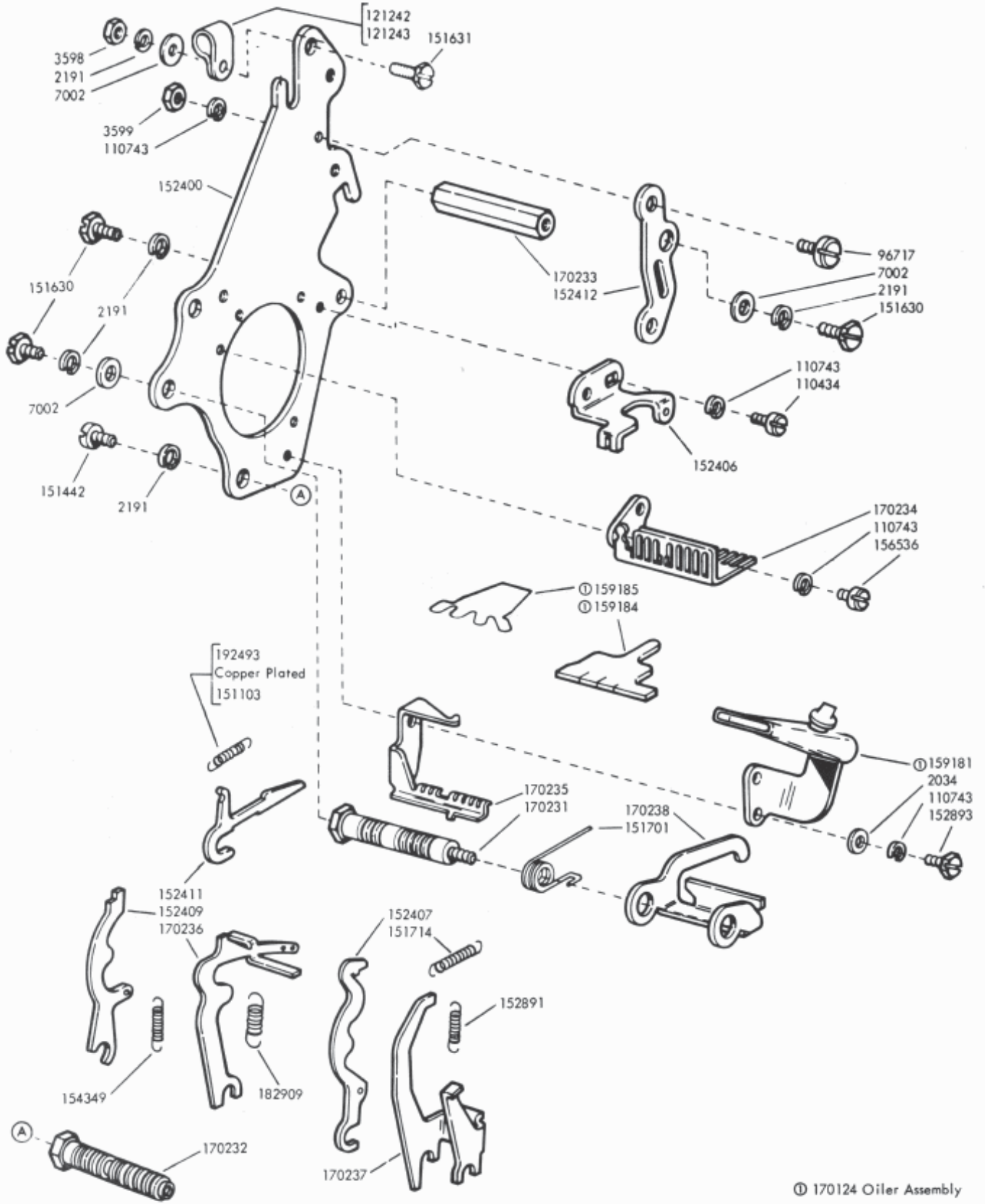


FIGURE 9. ROCKER BAIL MECHANISM



Ⓢ 170124 Oiler Assembly

FIGURE 10. SELECTING MECHANISM

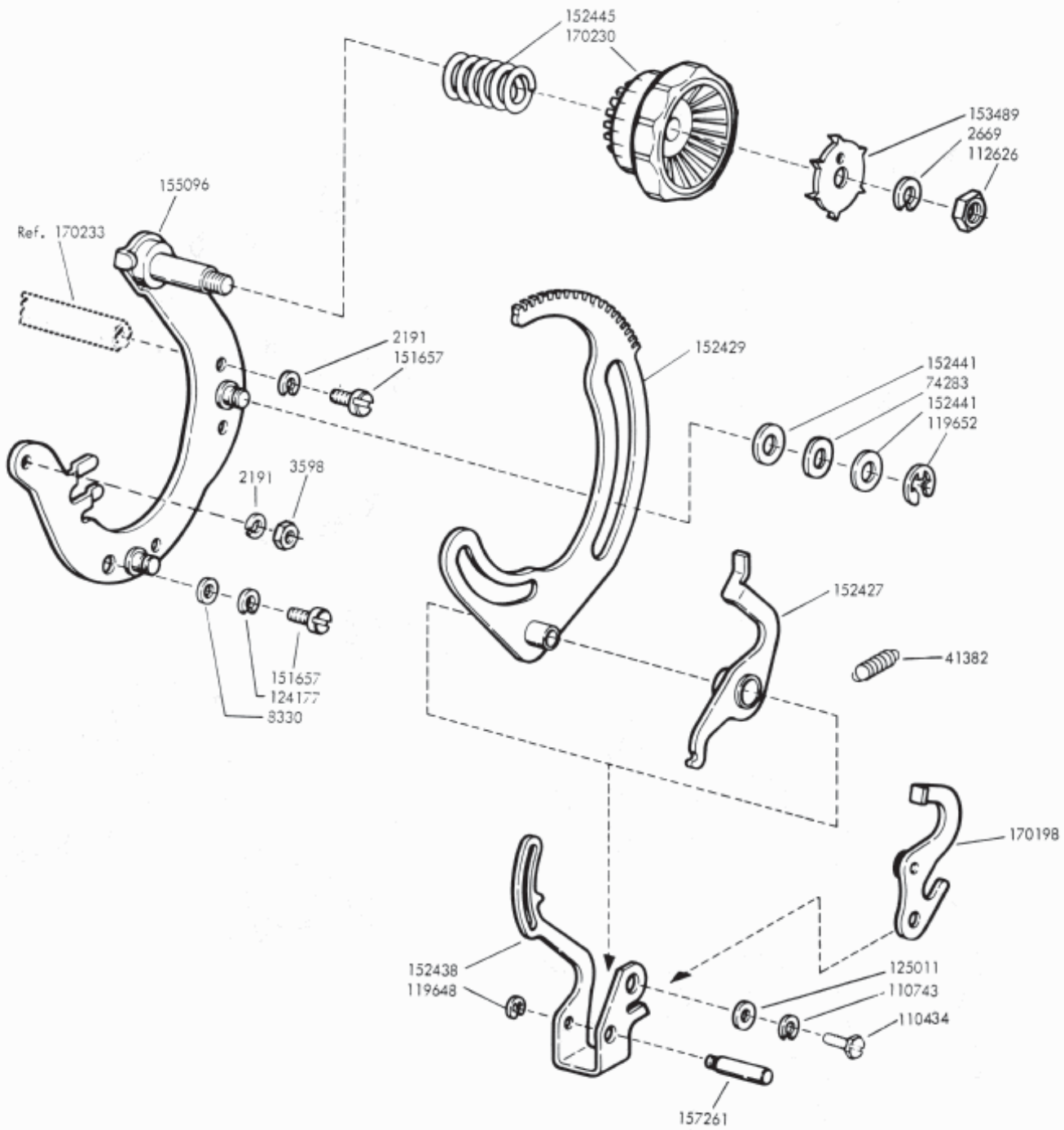
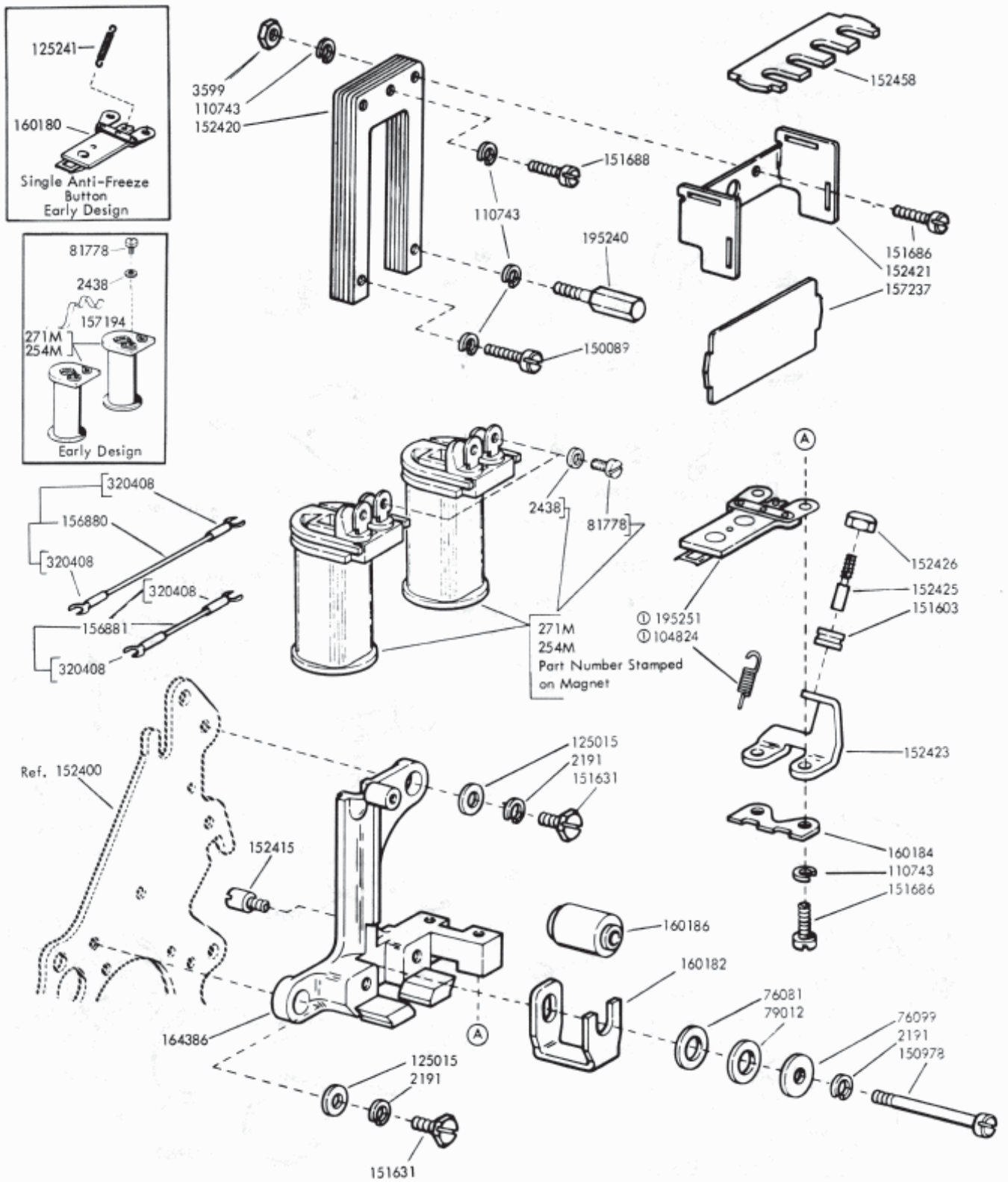
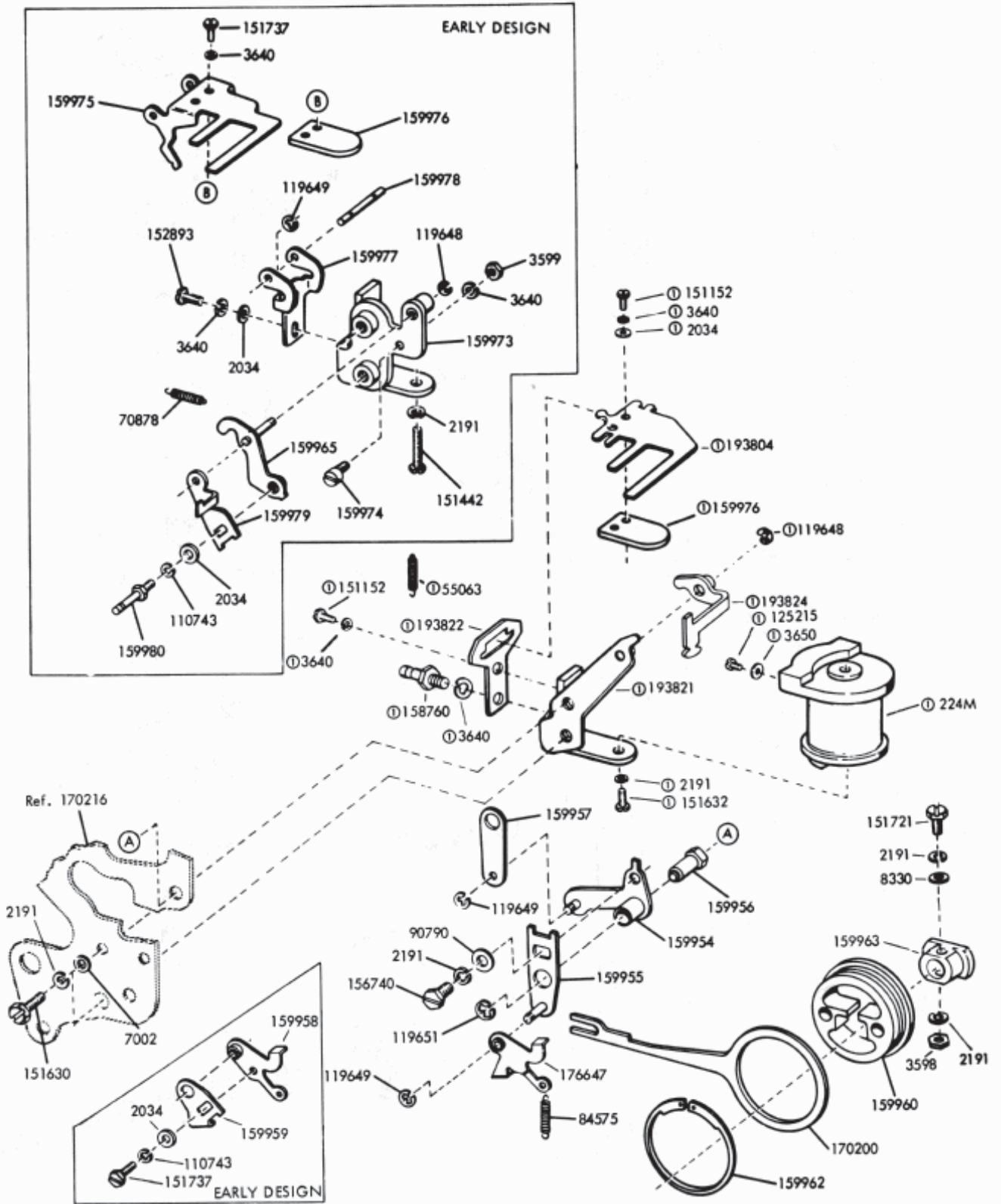


FIGURE 11. RANGE FINDER MECHANISM



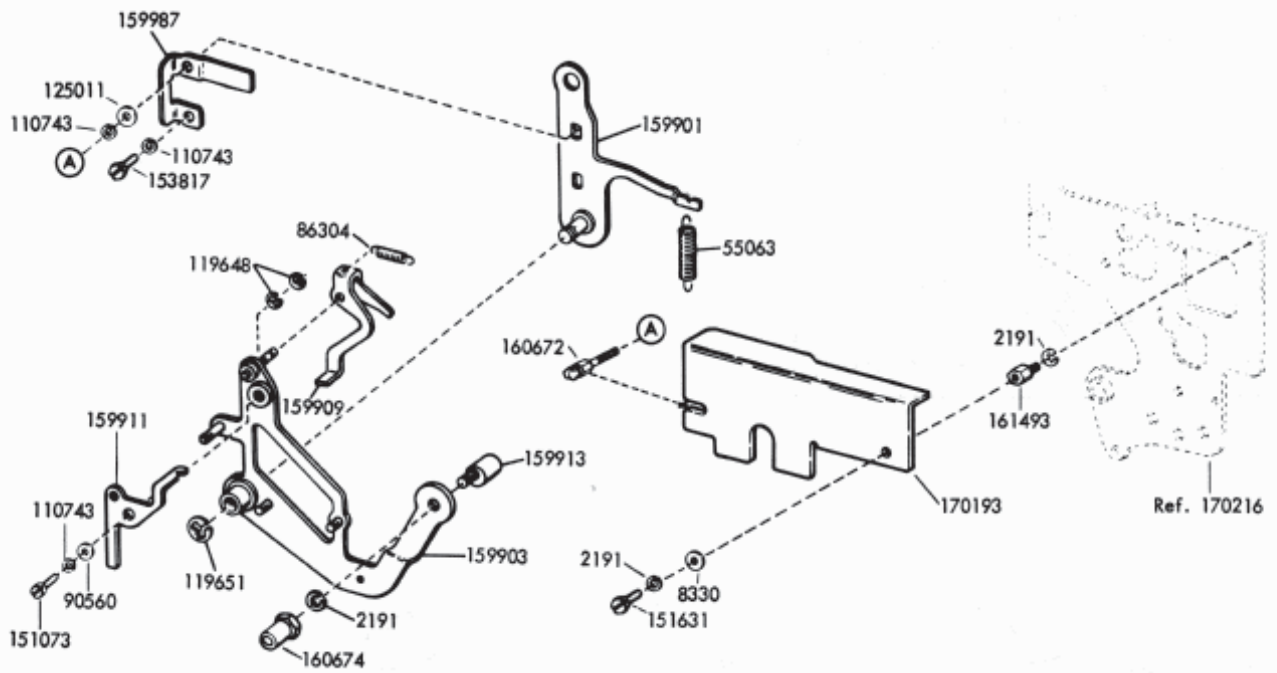
ⓐ 195634 Modification Kit to Provide Quick Release Armature, Specification 501655.

FIGURE 12. SELECTING MAGNET MECHANISM



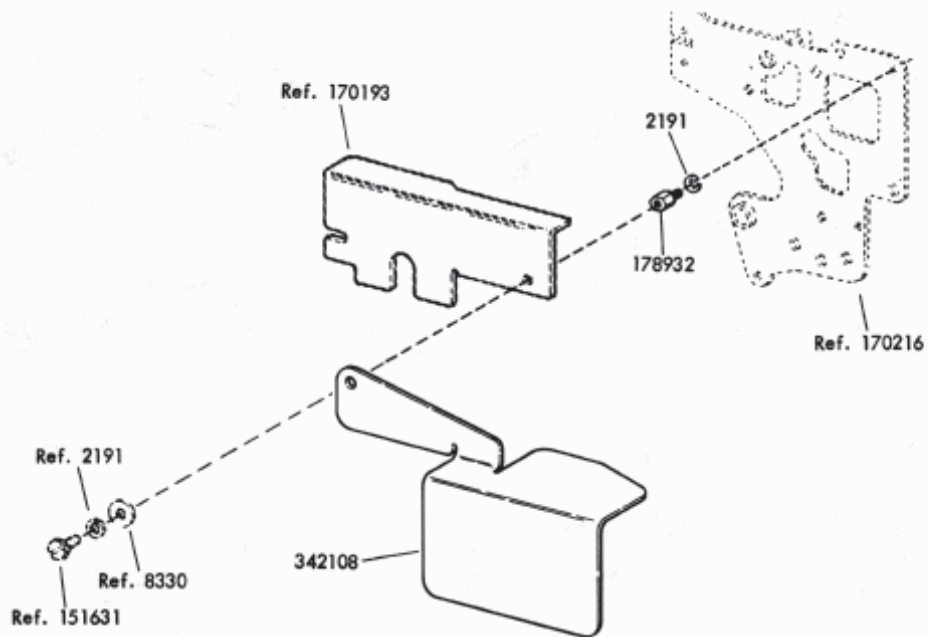
193825 Backspace Magnet Assembly Specification 55345

FIGURE 13. 170196 MODIFICATION KIT TO ADD POWER DRIVE TO BACKSPACE



Specification 55345

FIGURE 14. 170196 MODIFICATION KIT TO ADD POWER DRIVE TO BACKSPACE (Continued)



Specification 50,7785

FIGURE 15. 343954 MODIFICATION KIT TO PROVIDE BACKSPACE ECCENTRIC DRIVE MECHANISM COVER

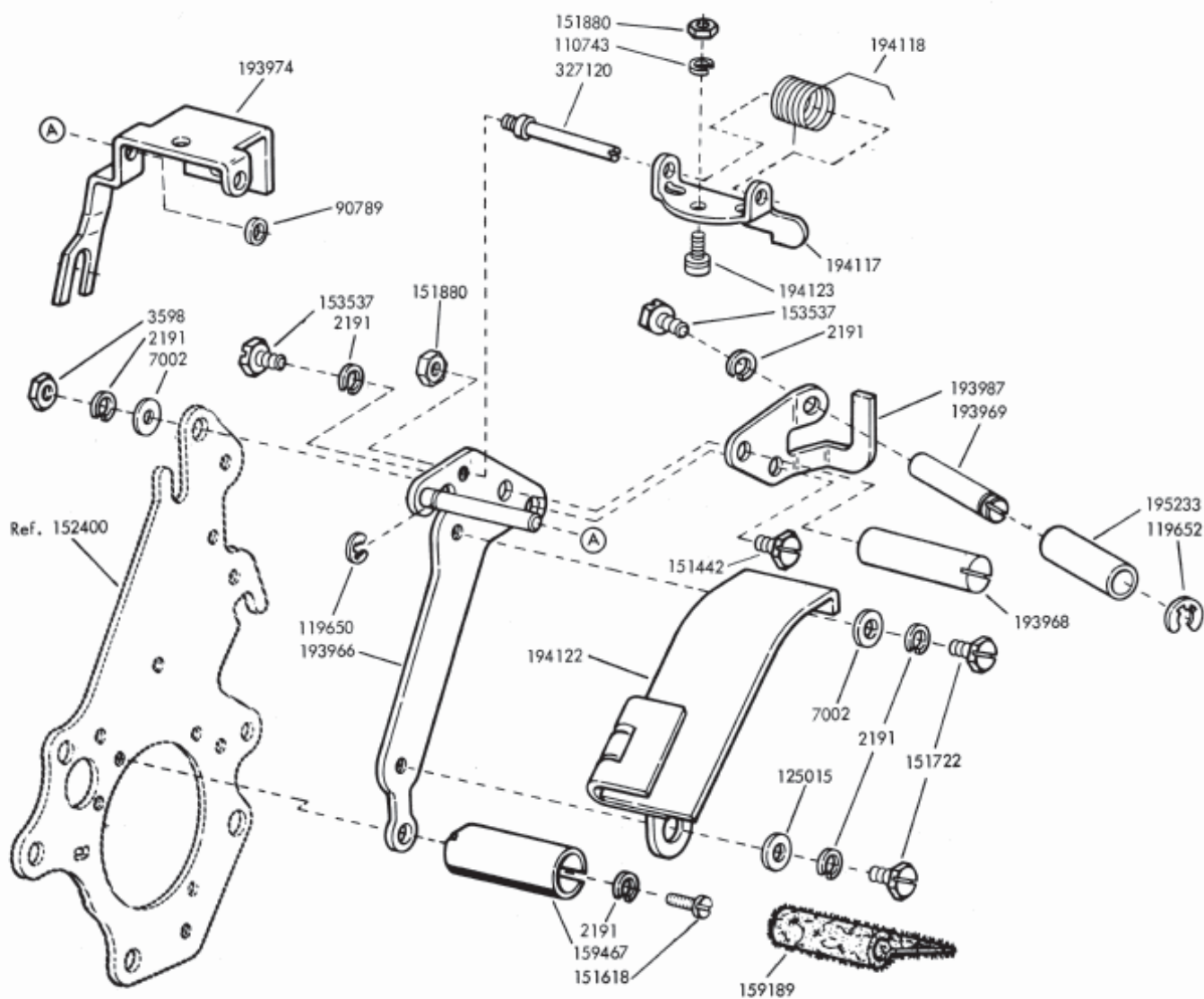
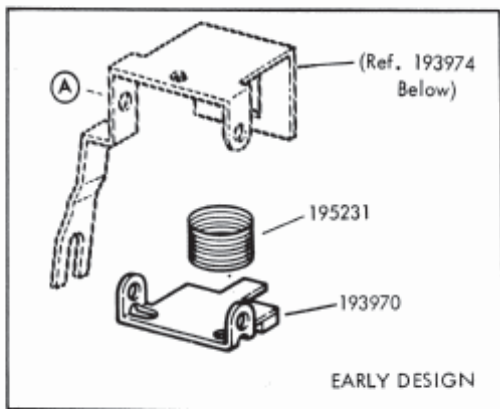


FIGURE 16. SLACK TAPE MECHANISM



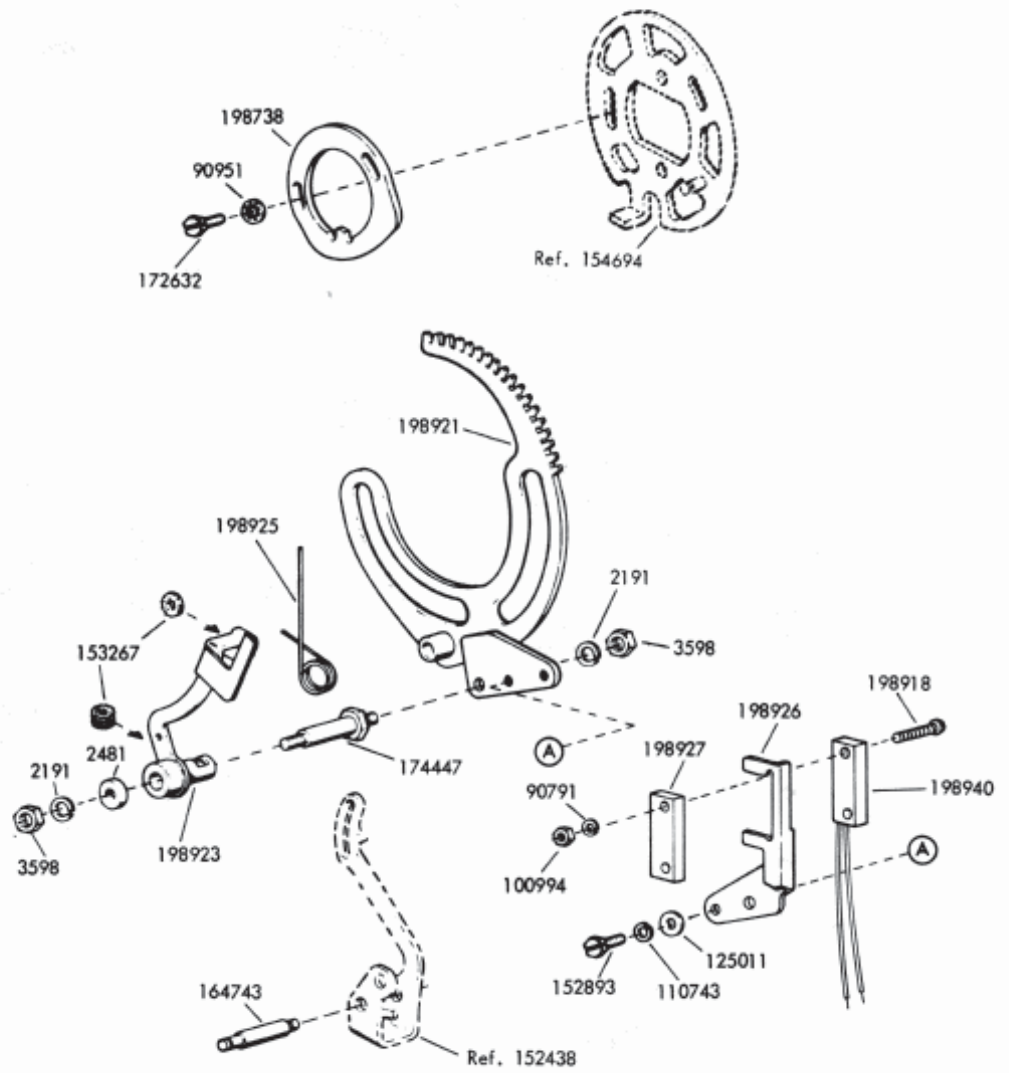


FIGURE 17. 198760 TIMING CONTACT ASSEMBLY

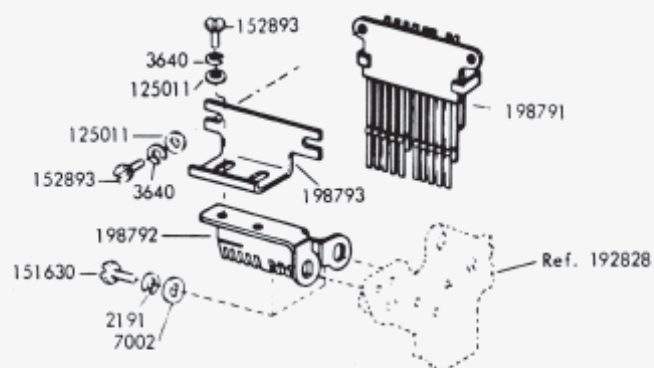


FIGURE 18. CODE READING CONTACTS

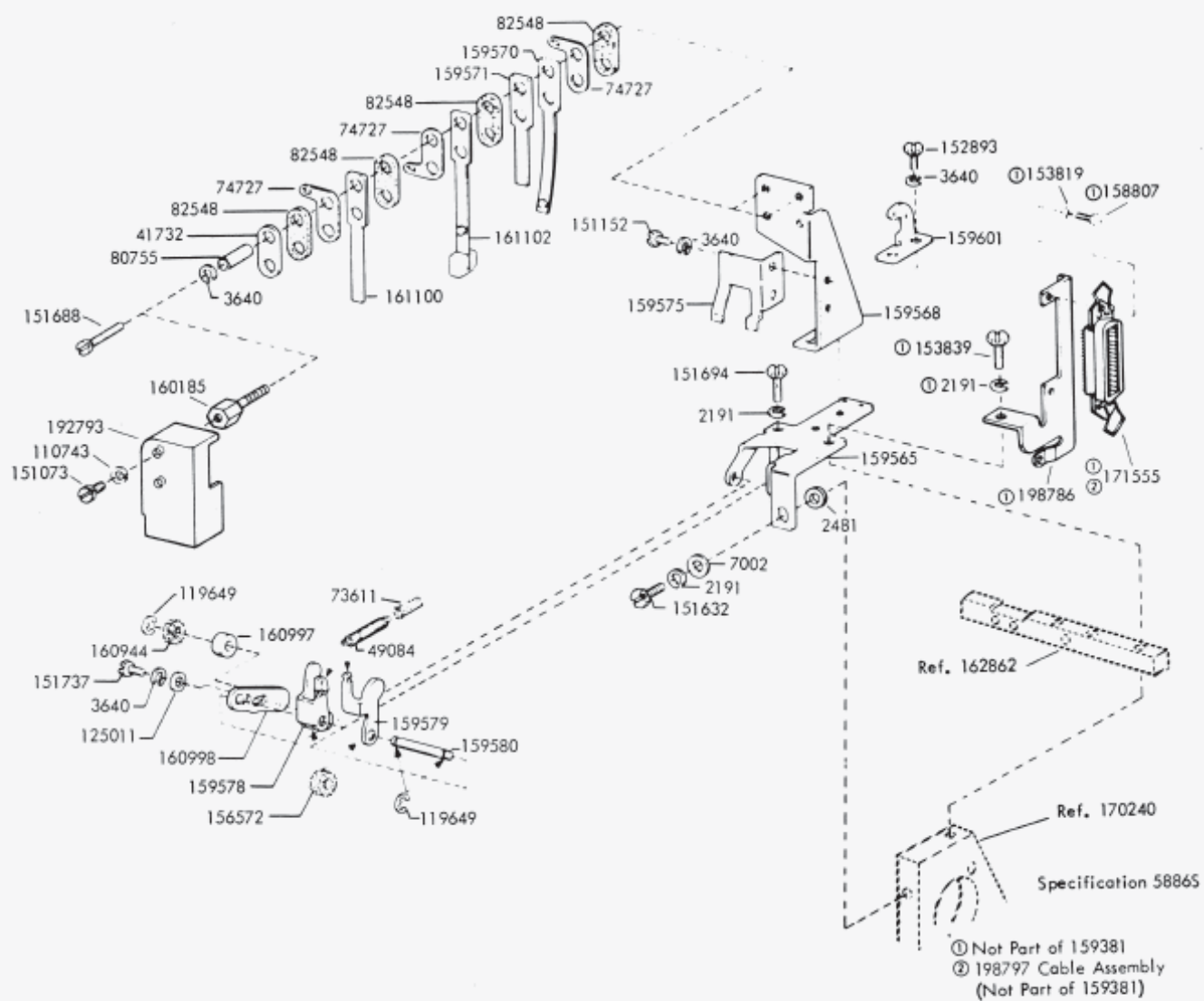
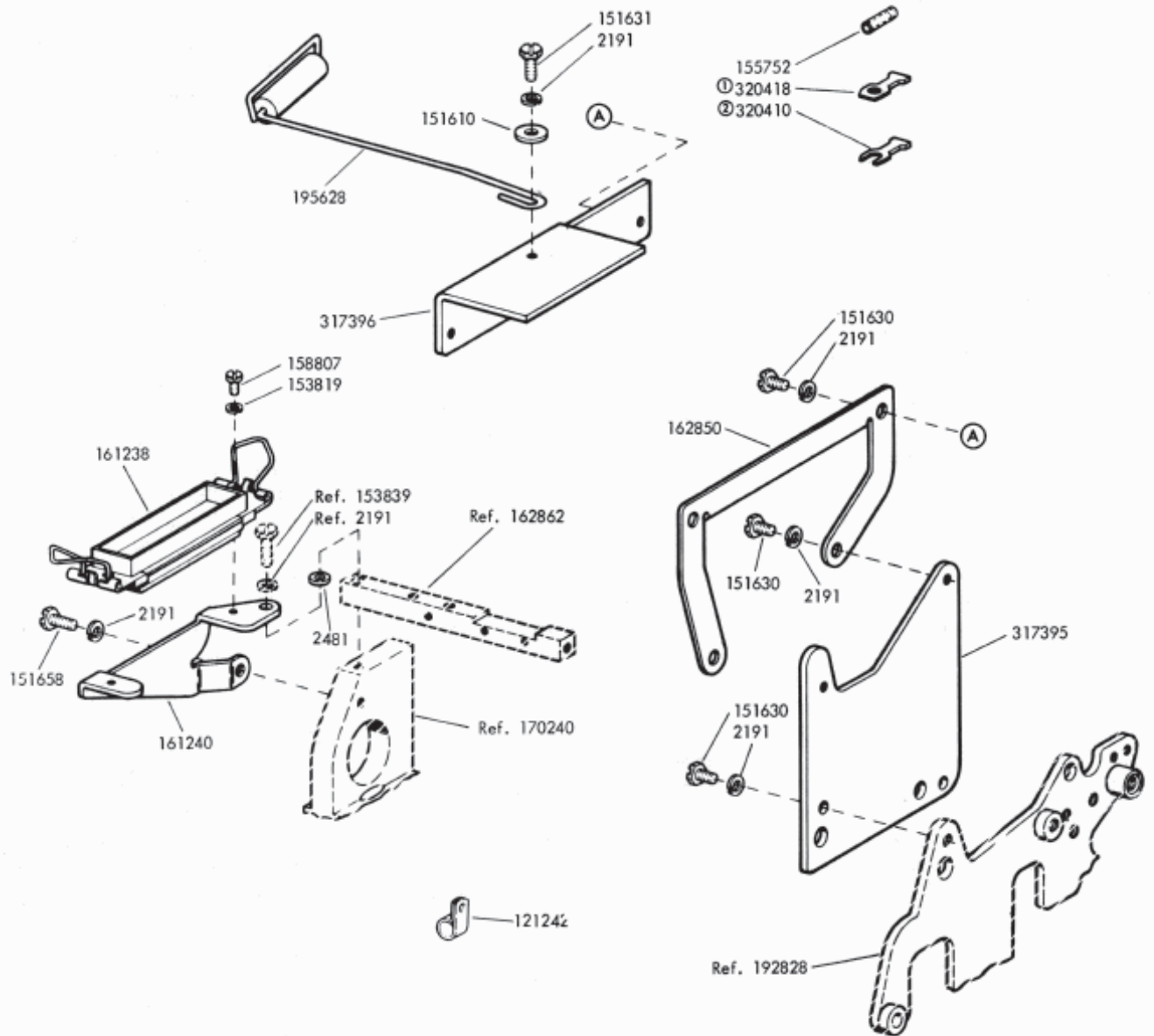


FIGURE 19. 159381 MODIFICATION KIT TO PROVIDE AUXILIARY TIMING CONTACTS



- ① 162207 Cable w/ Terminals
- ② 162064 Cable w/ Terminals

FIGURE 20. COMPONENTS FOR QUICK DISCONNECT FEATURE

## NUMERICAL INDEX

Part Number	Description and Page Number	Part Number	Description and Page Number	Part Number	Description and Page Number
224M	Coil, Magnet 14	86774	Screw, 6-40 Shoulder 3	150029	Wick, Felt 5
254M	Coil, Magnet 13	87401	Spring 2	150040	Screw, 6-40 x 5/8 Fil 5
271M	Coil, Magnet 13	90361	Washer, Felt 9	150043	Shoe, Secondary Clutch 5
1036	Nut, 6-40 Hex 6	90560	Washer, Flat 8,15	150044	Shoe, Primary Clutch 5
2034	Washer, Flat 2,11,14	90573	Spring 10	150048	Spring 2,3
2191	Lockwasher 2 to 7,9 to 19	90789	Washer, Flat 16	150089	Screw, 4-40 x 1/2 Fil 13
2438	Washer, Flat 13	90790	Washer, Flat 14	150241	Spring 2,3,5
2481	Washer, Flat 17,18,19	90791	Lockwasher 3,6,17	150355	Latchlever 2
2539	Nut, 3/8-32 Hex 3	90951	Lockwasher 17	150356	Lever, Trip 2
2669	Lockwasher 10,12	91120	Spring 6	150923	Washer, Felt 9
3598	Nut, 6-40 Hex 2,3,4,6,7,9,10,11,12,14,16,17	93108	Lockwasher 4	150978	Screw, 6-40 x 1-1/8 Fil 13
3599	Nut, 4-40 Hex 3,7,11,13,14	93356	Washer, Felt 2,6	151073	Screw, 4-40 x 5/32 Fil 2,3,8,9,15,18
3603	Nut, 1/4-32 Hex 4	96717	Screw, 4-40 Shoulder 11	151103	Spring 11
3640	Lockwasher 2,5,8,14,18	98212	Post, Spring 3	151152	Screw, 4-40 x 3/16 Hex 2,3,8,14,18
3646	Lockwasher 3	100994	Nut, 2-56 Hex 17	151222	Washer, Felt 9
3650	Washer, Flat 14	104807	Washer, Flat 8	151246	Washer, Flat 5
5363	Spring Compression 6	104824	Spring 13	151362	Wick, Felt 10
7002	Washer, Flat 2,3,6,7,10,11,14,16,18	110434	Screw, 4-40 x 3/16 Fil 11,12	151416	Nut, 6-40 Hex 6,9
8330	Washer, Flat 2,4,9,12,14,15	110446	Nut, 2-56 Hex 3	151442	Screw, 6-40 x 1/2 Hex 4,7,11,14,16
41382	Spring 6,12	110743	Lockwasher 2,3,5,6,7,8,9,11 to 18	151603	Spacer 13
41543	Bearing, Ball 4	112626	Nut, 10-32 Hex 12	151610	Washer, Flat 19
41732	Plate, Clamp 18	119647	Ring, Retaining 6	151618	Screw, 6-40 x 7/16 Fil 16
42823	Washer, Flat 5	119648	Ring, Retaining 6,10,12,14,15	151629	Nut, 6-40 Lug 2,9
49084	Spring 18	119649	Ring, Retaining 6,14,18	151630	Screw, 6-40 x 1/4 Hex 2,3,6,11,14,18,19
55063	Spring 14,15	119650	Ring, Retaining 9,16	151631	Screw, 6-40 x 5/16 Hex 2,3,4,10,11,13,15,19
70878	Spring 14	119651	Ring, Retaining 2,14,15	151632	Screw, 6-40 x 3/8 Hex 5,10,14,18
71437	Washer, Flat 9	119652	Ring, Retaining 2,3,6,9,12,16	151637	Screw, 4-40 x 1/4 Fil 7
73175	Lockwasher 3	119654	Ring, Retaining 5	151639	Washer, Flat 3
73611	Wick, Felt 18	121242	Clamp, 1/8 ID Cable 11,19	151657	Screw, 6-40 x 1/4 Fil 2,3,12
74283	Washer, Spring 12	121243	Clamp, 3/16 ID Cable 11	151658	Screw, 6-40 x 5/16 Fil 4,19
74727	Terminal, Contact 18	121551	Screw, 8-32 x 1/4 Hex 3	151686	Screw, 4-40 x 3/8 Fil 13
76081	Washer, Flat 2,13	124177	Lockwasher 6,10,12	151688	Screw, 4-40 x 5/8 Fil 13,18
76099	Washer, Flat 13	125011	Washer, Flat 2,3,7,8,12,15,17,18	151694	Screw, 6-40 x 11/32 Fil 18
76295	Spring 3	125015	Washer, Flat 3,9,13,16	151701	Spring, Torsion 11
76461	Washer, Flat 4	125215	Screw, 4-40 x 3/16 Hex 14	151714	Spring 11
78103	Screw, 6-40 x 1-3/16 Hex 3	125231	Nut, 10-32 Hex 10	151721	Screw, 6-40 x 3/4 Hex 4,14
79012	Insulator 13	125241	Spring 13	151722	Screw, 6-40 x 3/16 Hex 6,16
80755	Bushing, Insulating 18	128357	Ring, Retaining 9		
80945	Spring 3	135716	Spring 2		
81731	Spring 3	139752	Screw, 4-40 x 11/64 Fil 2,3		
81778	Screw, 4-40 x 3/16 Fil 13	150000	Drum, Clutch 5		
82548	Insulator, .062" Thk 18	150001	Drum, Clutch 5		
84575	Spring 14	150013	Disc, Adjusting 5		
86304	Spring 15	150026	Lever, Shoe Release 5		

## NUMERICAL INDEX (Continued)

Part Number	Description and Page Number	Part Number	Description and Page Number	Part Number	Description and Page Number
151734	Screw, 4-40 x 3/8 Hex 3	155995	Screw, 6-40 Shoulder 4	156740	Screw, 6-40 x 7/32 Hex 14
151737	Screw, 4-40 x 11/64 Hex 5,14,18	156009	Post, Slide 9	156880	Jumper, 2-3/8" Black 13
151880	Nut, 4-40 Hex 16	156013	Screw, 4-40 Spl 9	156881	Jumper, 1-1/2" Black 13
152400	Plate, Selector Mounting 11,13,16	156015	Plate, Spring 9	156921	Guide, Adjusting Lever 10
152406	Bracket, Spring 11	156016	Link, Front Drag 9	156987	Screw, 6-40 Spl 10
152407	Locklever, Spacing 11	156017	Shaft, Eccentric 9	156994	Strip, Felt 10
152409	Lever, Selecting 11	156019	Washer, Felt 6	156995	Post 10
152411	Lever, Push 11	156024	Plate, Rear 6,7,9	157194	Retainer, Spring 13
152412	Link 11	156042	Post, Spacing 6	157237	Shield, Terminal 13
152415	Stud, Adjusting 4,13	156043	Bushing 9	157261	Shaft, Stop Arm 12
152420	Lamination, Magnet 13	156047	Spring, Torsion 6	158171	Shaft w/Bearing 4
152421	Bracket, Shield Mounting 13	156050	Stud, Eccentric 6	158745	Clamp, Bearing 4
152423	Bracket, Armature Stop Mounting 13	156051	Bushing, Eccentric 9	158760	Post, Spring 14
152425	Post, Spring 13	156052	Shoe, Tape 6	158807	Screw, 3-48 x 11/64 Fil 18,19
152426	Nut, 6-40 Self-Locking 13	156054	Lever, Detent 6	158881	Nut, 6-40 Shoulder 4
152427	Latch w/Hub 12	156055	Wheel, Die 6	158893	Post, Spring 3
152429	Rack, Sector 12	156058	Link, Rear 9	158941	Bail, Rocker 10
152438	Bail, Stop Arm 12,17	156060	Shaft, Eccentric 9	159011	Bracket, Spring 3
152441	Washer, Flat 12	156061	Arm, Tape Shoe 6	159181	Lubricator 11
152445	Spring Compression 12	156062	Post, Pivot 6	159184	Wick, Lubricating 11
152458	Shield, Terminal 13	156067	Guide, Slide Post 9	159185	Retainer, Wick 11
152634	Washer, Flat 9	156069	Plate 7	159189	Wick, Felt 16
152891	Spring 11	156070	Bail, Toggle 9	159341	Bearing, Ball 5
152893	Screw, 4-40 x 1/4 Hex 2, 3,5,6,7,8,9,11,14,17,18	156077	Plate w/Post 9	159381	Modification Kit 1,18
153239	Roller 10	156090	Screw, 6-40 Adjusting 6	159411	Bearing Assembly 10
153267	Washer, Felt 17	156093	Washer, Felt 9	159427	Bracket, Stop 2,3
153489	Detent 12	156094	Link, Front 9	159431	Lever, Main Trip 2,3
153537	Screw, 6-40 x 9/32 Hex 16	156095	Bushing 9	159467	Holder, Wick 16
153538	Screw, 6-40 x 7/16 Hex 7	156099	Link, Rear Drag 9	159544	Release, Clutch 2
153817	Screw, 4-40 x 3/8 Hex 15	156103	Strip, Felt 9	159560	Spring 7
153819	Lockwasher 18,19	156162	Washer, Flat 9	159565	Bracket w/Post 18
153839	Screw, 6-40 x 5/8 Hex 2,9,18,19	156165	Washer, Felt 2,9	159568	Bracket, Contact 18
154215	Spring 9	156169	Washer, Felt 9	159570	Spring, Contact 18
154242	Screw, 6-40 x 5/16 Hex 10	156173	Stud 7	159571	Stiffener 18
154349	Spring 11	156248	Latch 2,3	159575	Bracket, Stop 18
154396	Cam w/Pin 5	156257	Bracket 2	159578	Bail, Front Contact 18
154398	Bearing, Needle 5	156267	Lever, Trip 3	159579	Bail, Rear Contact 18
154694	Disc, Clutch Cam 5,17	156318	Lever, Reset 2	159580	Shaft, Actuating Bail 18
154698	Wick, Felt 6	156366	Shaft, Rocker Bail 10	159601	Bracket, Spring 18
155096	Plate, Range Finder Mounting 12	156387	Lever, Trip 2	159625	Bracket, Bail Guide 10
155752	Sleeve, 5/64 ID x 1/2" Lg Insulating 19	156388	Lever, Adjusting 2	159901	Plate w/Post 15
		156403	Disc, Bearing 5	159903	Bellcrank 15
		156412	Link, Drive 10	159909	Pawl, Feed 15
		156465	Washer, Spring 5	159911	Plate 15
		156472	Post, Spring 2	159913	Screw, 6-40 Eccentric 15
		156536	Screw, 4-40 x 1/8 Fil 11	159954	Link, Adjusting 14
		156572	Washer, Felt 18	159955	Link, Drive 14
		156576	Washer, Felt 10		
		156577	Roller, Detent Lever 6		

## NUMERICAL INDEX (Continued)

Part Number	Description and Page Number	Part Number	Description and Page Number	Part Number	Description and Page Number
159956	Post 14	164513	Pawl, Feed 9	176266	Spring, Torsion 2
159957	Link 14	164743	Shaft 17	176490	Bracket w/Hub 2
159958	Latch 14	164851	Wheel, Feed 6	176647	Latch w/Hub 14
159959	Extension 14	170124	Lubricator Assembly 11	178932	Post, Supporting 15
159960	Eccentric 14	170125	Lever, Shoe Release 5	179573	Nut, 6-40 Hex 9
159962	Ring, Retaining 14	170193	Guard, Backspace 15	181284	Spring 5
159963	Arm, Adjusting 14	170196	Modification Kit 1,14,15	182909	Spring 11
159965	Arm, Adjusting 14	170198	Arm, Stop 12	192246	Extension, Chad Chute 8
159973	Bracket w/Bushing 14	170199	Bracket, Anchor 6	192493	Spring 11
159974	Eccentric 14	170200	Arm, Eccentric 14	192499	Cam, Selector 5
159975	Bail, Armature 14	170201	Shaft w/Bearing 5	192661	Post 10
159976	Armature 14	170202	Guidepost 2,3	192709	Link w/Hub 10
159977	Hinge 14	170203	Lever, Slide Trip 2,3	192793	Guard 18
159978	Shaft 14	170204	Bracket, Spring 2	192828	Plate w/Bushing 2,18,19
159979	Arm, Non-Repeat 14	170206	Guidepost 9	193804	Armature 14
159980	Post, Spring 14	170210	Block Assembly, Punch 8	193821	Bracket w/Post 14
159987	Bracket, Guide 15	170211	Arm, Rocker 9	193822	Clamp 14
160180	Armature w/Extension 13	170215	Spring, Punch Block 8	193824	Latch w/Hub 14
160182	Bracket w/Button 13	170216	Plate, Front 6,8,14,15	193825	Magnet Assembly 14
160184	Plate, Stop 13	170217	Post 6	193966	Bracket w/Stud 16
160185	Post 18	170218	Shaft, Feed Wheel 6	193968	Post 16
160186	Bushing, Shoulder 13	170219	Stud, Die Wheel 6	193969	Post 16
160672	Stud 15	170220	Guide, Tape 6	193970	Plate, Clamp 16
160674	Nut, 6-40 Shoulder 15	170225	Block, Tape Guide 7	193974	Depressor, Tape 16
160944	Washer, Felt 18	170230	Knob 12	193976	Bail, Rocker 10
160948	Screw, 2-56 Spl 6	170231	Guide, Upper 11	193987	Bracket, Roller 16
160997	Roller 18	170232	Guide, Lower 11	194117	Plate, Clamp 16
160998	Pad, Base 18	170233	Stud 11,12	194118	Spring, Torsion 16
161100	Spring, Contact 18	170234	Bracket, Guide 11	194122	Platform, Tape 16
161102	Spring, Contact 18	170235	Bracket, Spring 11	194123	Screw, 4-40 Spl 16
161107	Stud 6	170236	Lever 11	194162	Bail, Reset 9
161108	Stud 7	170237	Lever, Start 11	194916	Bracket, Stop 2
161139	Nut, 6-40 Hex 6	170238	Bail, Reset 11	194992	Modification Kit 8
161238	Connector, 36 Pt Receptacle 19	170240	Frame 2,4,5,10,18,19	194993	Guide, Tape 8
161240	Bracket, Connector 19	170241	Screw, 6-40 Adjusting 6	195231	Spring, Compression 16
161493	Post, Supporting 15	170242	Slide, Feed Hole Punch 7	195233	Roller 16
162064	Cable w/Terminals 19	170244	Wheel, Die 6	195240	Post 13
162207	Cable w/Terminals 19	170245	Wheel, Feed 6	195251	Armature, Selector 13
162834	Solenoid, Feed-Out 3	170246	Slide w/Insulator 7	195628	Guide, Tape 19
162850	Handle 19	170247	Guide 7	195634	Modification Kit 13
162862	Bar, Mounting 2,18,19	170264	Guidepost 2,3	195787	Retainer, Chad Chute 8
163015	Pinion, 28T 4	171555	Connector, 50 Pt Receptacle 18	198738	Cam, Timing 17
163018	Gear, 49T 4	172632	Screw, 4-40 x 3/16 Hex 17	198739	Plate 3
163025	Gearset, 100 WPM 4	172893	Plate Assembly, Front 9	198760	Contact Assembly, Timing 1,17
164279	Chute, Chad 8	172984	Bracket, Spring 8	198778	Wheel, Feed 6
164300	Spacer, .100" Thk 7	172993	Spring 8	198781	Block Assembly, Punch 8
164386	Bracket, Magnet Mounting 13	173340	Collar 5	198782	Post, Roller 3
		174447	Post 17	198783	Post, Roller 3

## NUMERICAL INDEX (Continued)

Part Number	Description and Page Number	Part Number	Description and Page Number	Part Number	Description and Page Number
198784	Roller, Tape 3	198837	Bushing 3	198940	Switch, Feed 17
198786	Bracket, Connector 18	198838	Arm 3	199506	Gasket 8
198787	Bracket, Mounting 3	198839	Arm, Actuator 3	305638	Bracket, Guide 9
198788	Lever, Trip 3	198844	Bracket, Switch Mounting 3	309365	Shaft w/Bearing 5
198789	Bail, Latch 3			315862	Gear, 59T 4
198791	Contact Assembly 18	198917	Switch, Feed 3	315863	Pinion, 23T 4
198792	Bracket, Guide 18	198918	Screw, 2-56 x 5/8 Fil 3, 17	315866	Gearset, 114 WPM 4
198793	Bracket, Contact 18			317395	Plate 19
198794	Bail, Solenoid 3	198921	Rack, Sector 17	317396	Bracket, Stop 19
198796	Link w/Hub 10	198923	Lever w/Bushing 17	320408	Terminal, Spade Type 13
198797	Cable Assembly 18	198925	Spring, Torsion 17	320410	Terminal, Spade Type 19
198798	Chute, Chad 8	198926	Bracket, Switch Mounting 17	320418	Terminal, Ring Type 19
198835	Contact Assembly 3			327120	Post 16
198836	Bushing 3	198927	Magnet 3,17	342108	Cover 15
				343954	Modification Kit 1,15