

BULLETIN No. 1138
ISSUE 1
DECEMBER, 1946

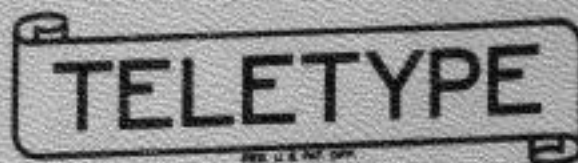
TELETYPE

PRINTING TELEGRAPH SYSTEMS

PARTS

TYPE-WHEEL PAGE PRINTER

TELETYPE MODEL 27
SIGNAL CORPS TT4/TG



INC. U.S. PAT. OFF.
CORPORATION

SUBSIDIARY OF

Western Electric Company

CHICAGO, U.S.A.

BULLETIN No. 1138
ISSUE 1
DECEMBER, 1946

TELETYPE

PRINTING TELEGRAPH SYSTEMS

PARTS

TYPE-WHEEL PAGE PRINTER
TELETYPE MODEL 27
SIGNAL CORPS TT4/TG



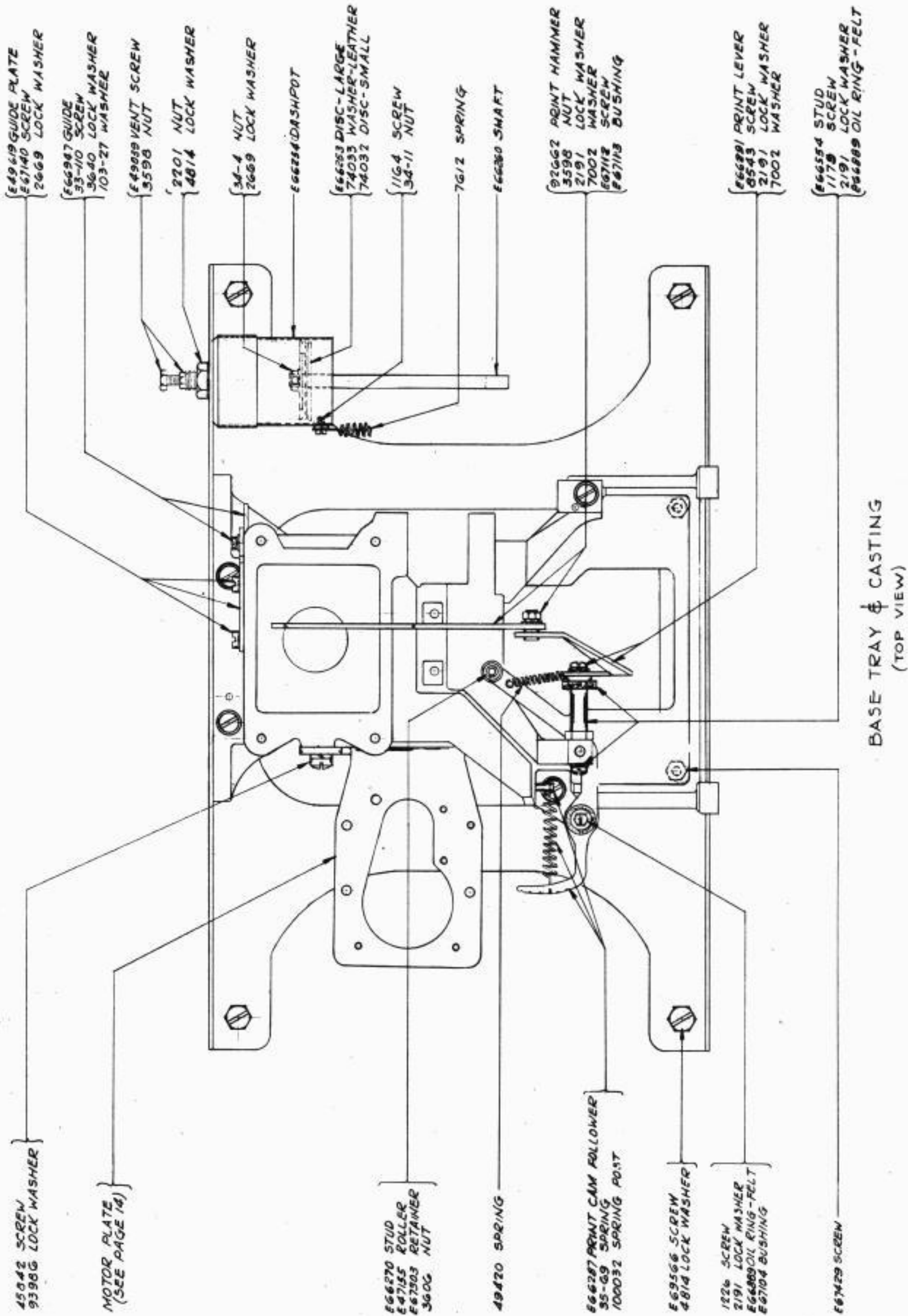
SPECIAL NOTE

ONLY PARTS SHOWN HEREIN WITHOUT THE LETTER "E"
PREFIX MAY BE ORDERED AS SERVICE ITEMS.

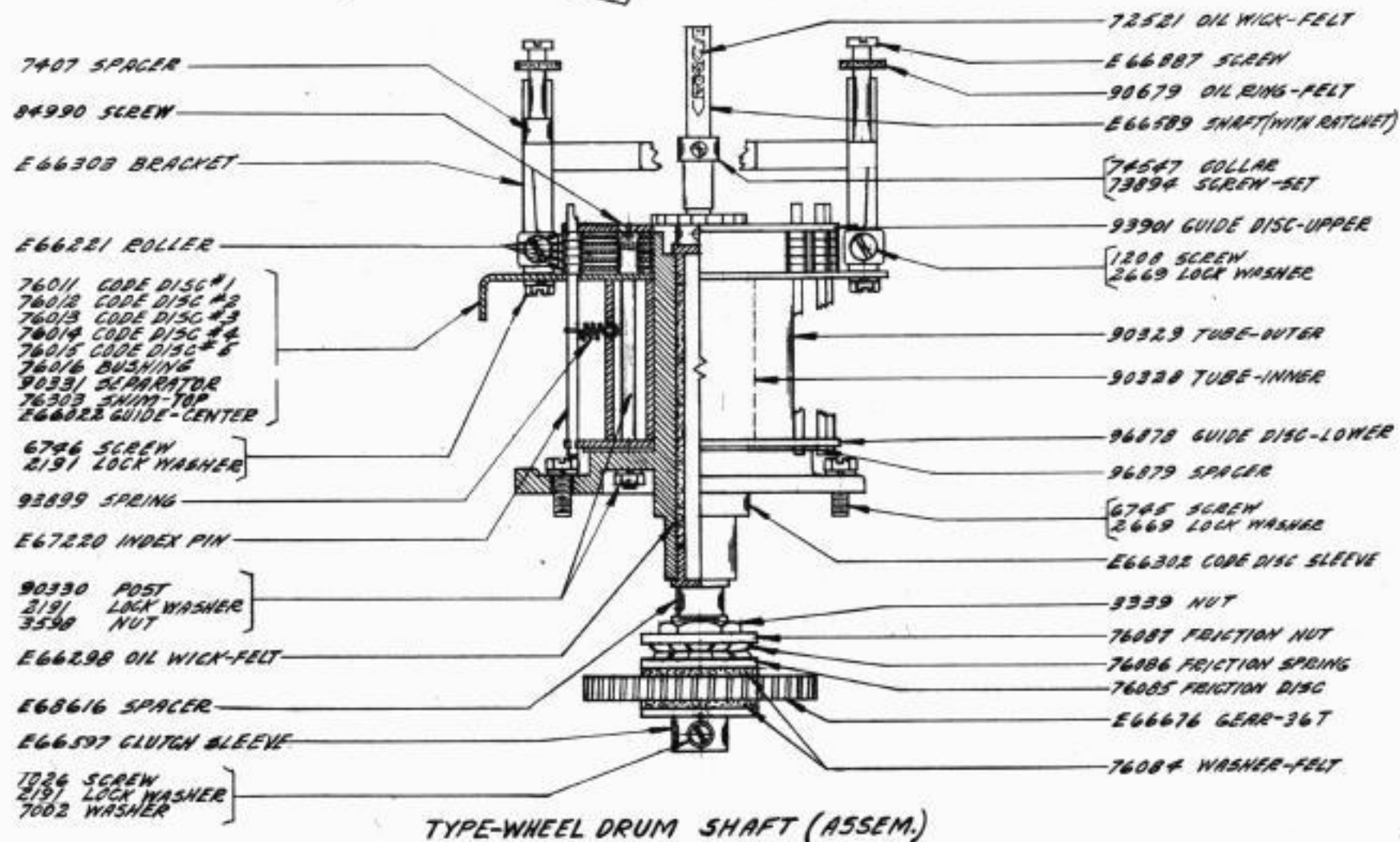
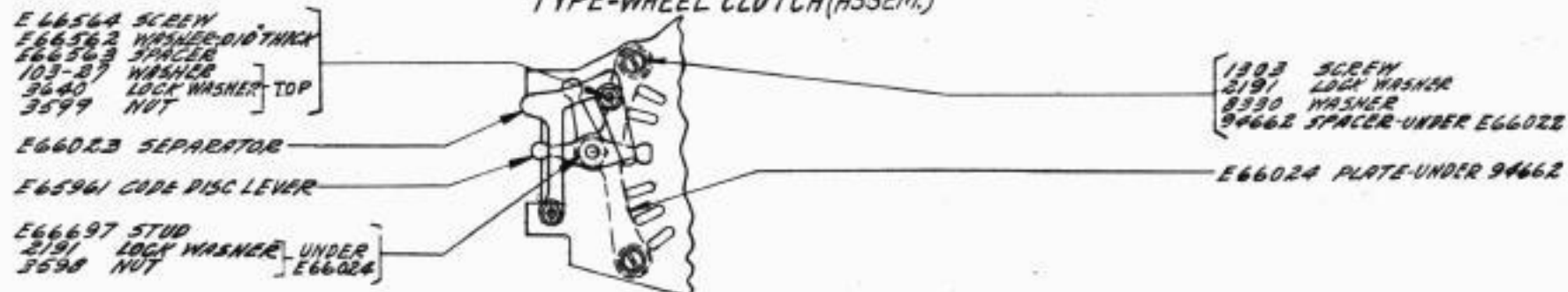
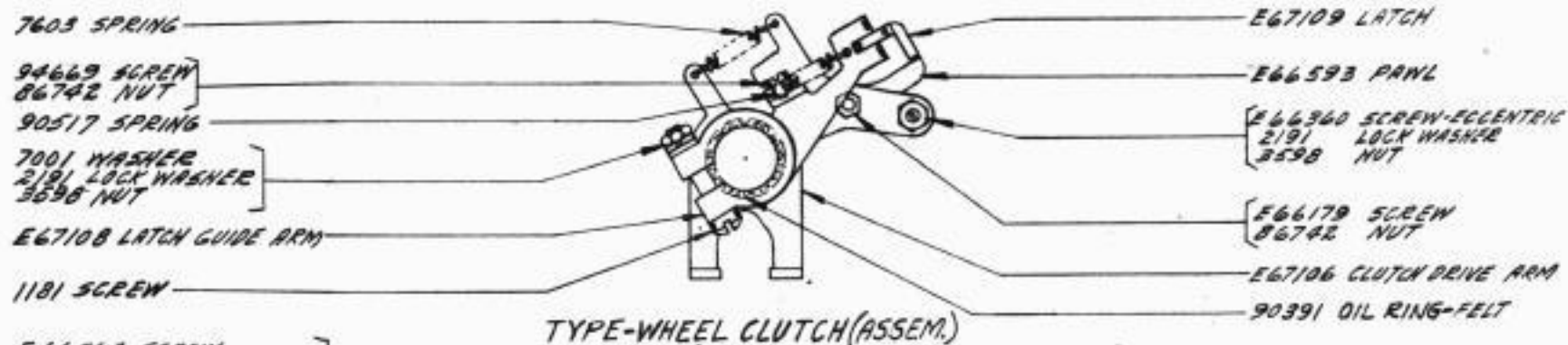
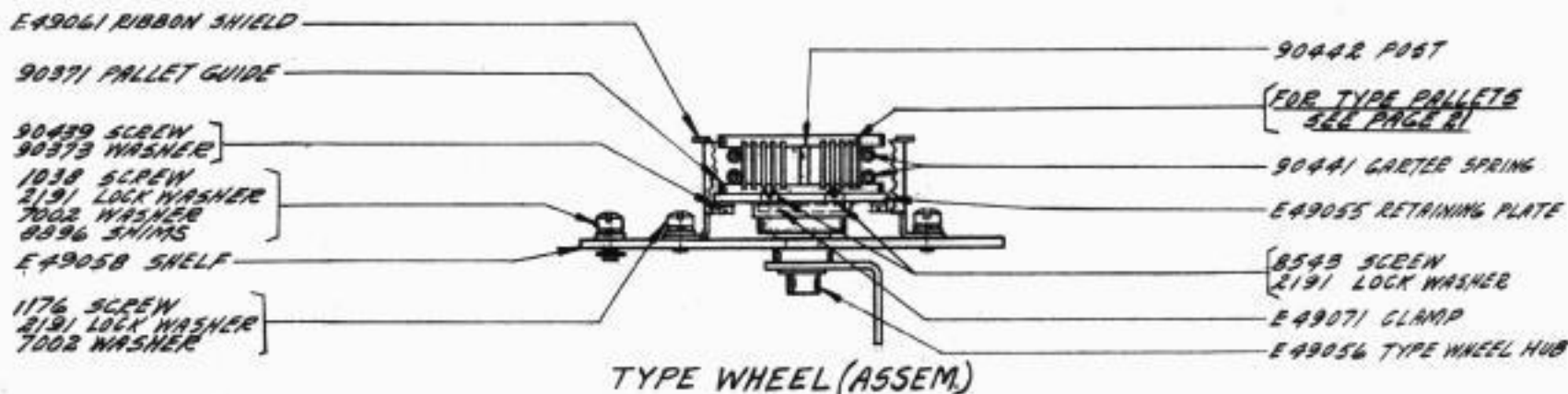
PART NUMBERS PREFIXED WITH LETTER "E" ARE SHOWN
FOR REFERENCE PURPOSES ONLY.

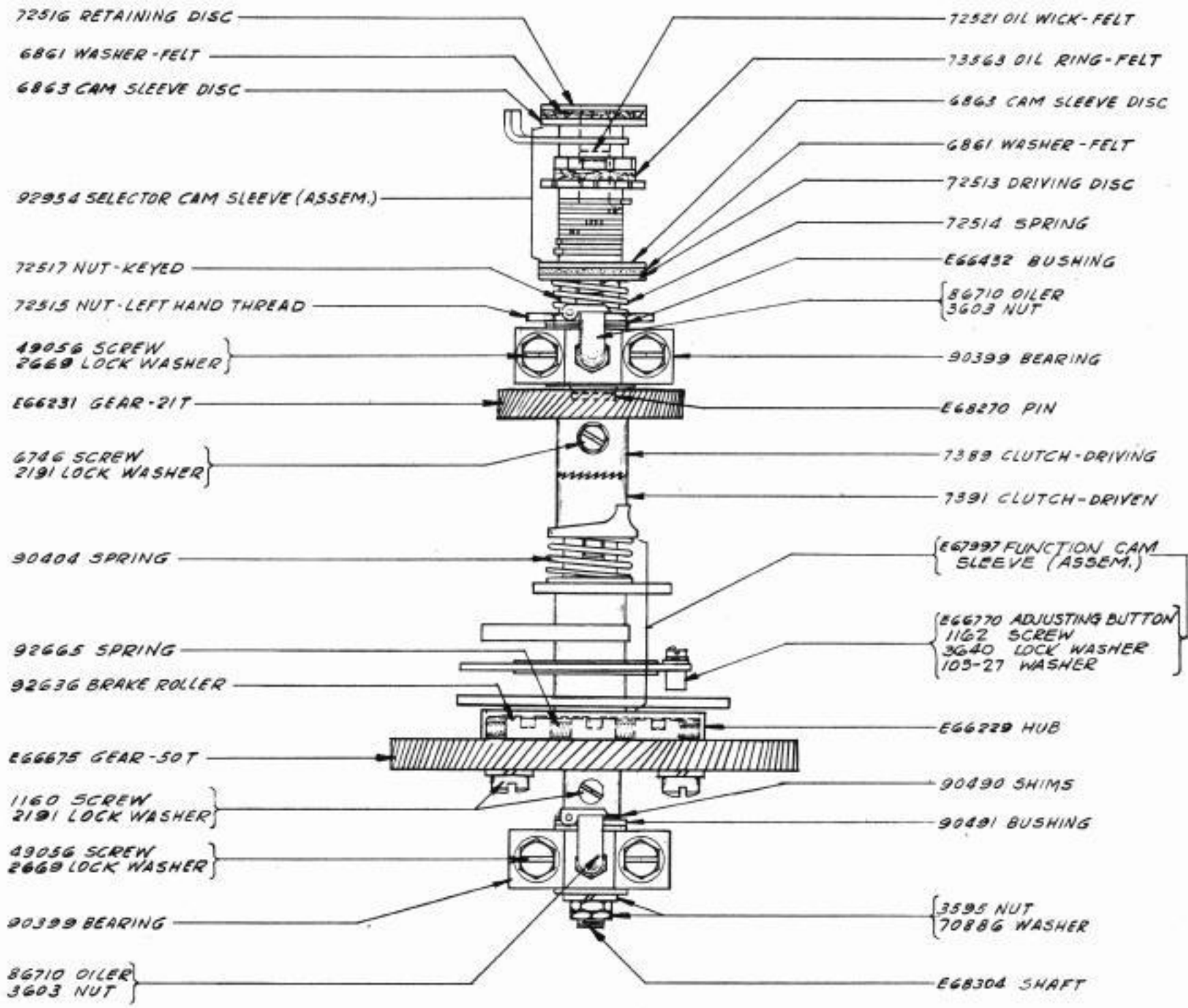
ALPHABETICAL INDEX

DESCRIPTION	PAGE NO.	DESCRIPTION	PAGE NO.
Base Tray and Casting - - - - -	1	Motor Control - - - - -	10
Bells - - - - -	9	Motor Control Contact - - - - -	10
Break Key - - - - -	16	Paper Roll Frame - - - - -	18
Cam Sleeve - Function - - - - -	3	Paper Roll Spindle - - - - -	18
Cam Sleeve - Selector - - - - -	3	Pinion - - - - -	14
Cam Sleeve - Transmitter - - - - -	13	Platen Carriage - - - - -	11
Carrying Case - - - - -	20	Plug and Cable - Keyboard - - - - -	12
Clutch Throwout Lever - - - - -	3	Power Filter - - - - -	16
Code Discs - - - - -	2	Power Supply Panel - - - - -	17
Code and Function Bar Unit - - - - -	5	Print Hammer Parts - - - - -	1
Condenser - - - - -	14,17	Range Scale - - - - -	4
Condenser and Spare Fuse Bracket - - - - -	17	Rear Frame - - - - -	9
Contact Levers - Transmitter - - - - -	13	Rectifier - - - - -	16
Control Panel - - - - -	16	Resistors - - - - -	14,17
Copyholder - - - - -	16	Rheostat - - - - -	16
Cover - Lower Section - - - - -	15	Ribbon Feed Mechanism - - - - -	8
Cover - Upper Section - - - - -	19	Ribbon Spools - - - - -	8
Dashpot - Carriage Return - - - - -	9	Rubber Mounting - Carrying Case - - - - -	20
Dashpot - Type Wheel - - - - -	1	Rubber Mounting - Cover - - - - -	15
Draw Strap - - - - -	9	Selector Bars - Keyboard - - - - -	12
Filter - - - - -	13	Selector Shaft - - - - -	3
Function Code Bars - - - - -	5	Selector Unit - - - - -	4
Function Plate - - - - -	10	Socket and Cable - - - - -	17
Fuses - - - - -	17	Spring Drum - - - - -	9
Gears - - - - -	2,3,13	Switch - Lever Action - - - - -	16
Governor - Motor - - - - -	14	Switch - Toggle - - - - -	16
Keyboard - - - - -	12	Terminal Block - - - - -	17
Keyboard Panel - - - - -	12	Toggle Switch - - - - -	16
Key Levers - - - - -	12	Transfer Contact - - - - -	10
Keytops - - - - -	21	Transfer Levers - - - - -	4
Line Feed Bail - - - - -	9	Transfer Locking Levers - - - - -	13
Line Meter - - - - -	16	Transmitter - - - - -	13
Magnet - Motor Control - - - - -	10	Tuning Fork Holder - - - - -	17
Magnet - Selector Unit - - - - -	4	Type Pallets - - - - -	21
Miscellaneous Equipment Mounted in Cover (Lower Section) - - - - -	16,17,18	Type Wheel - - - - -	2
Miscellaneous Function Levers - - - - -	7	Type-wheel Clutch - - - - -	2
Motor - - - - -	14	Type-wheel Drum Shaft - - - - -	2
		Type-wheel Lift and Function Pawls - - - - -	6

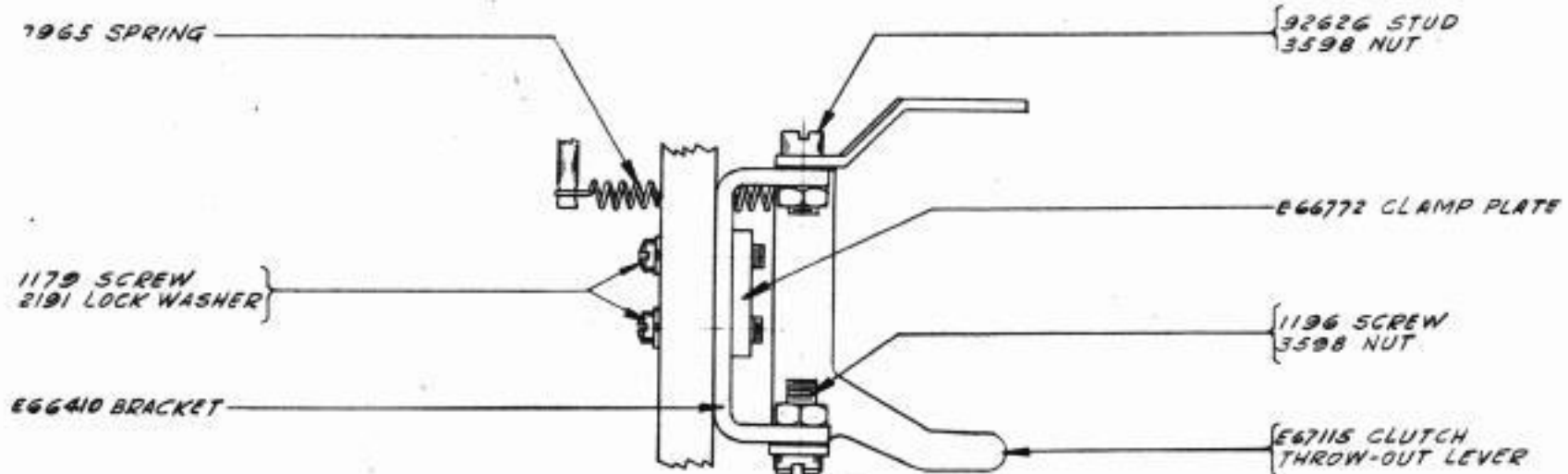


BASE TRAY & CASTING
(TOP VIEW)

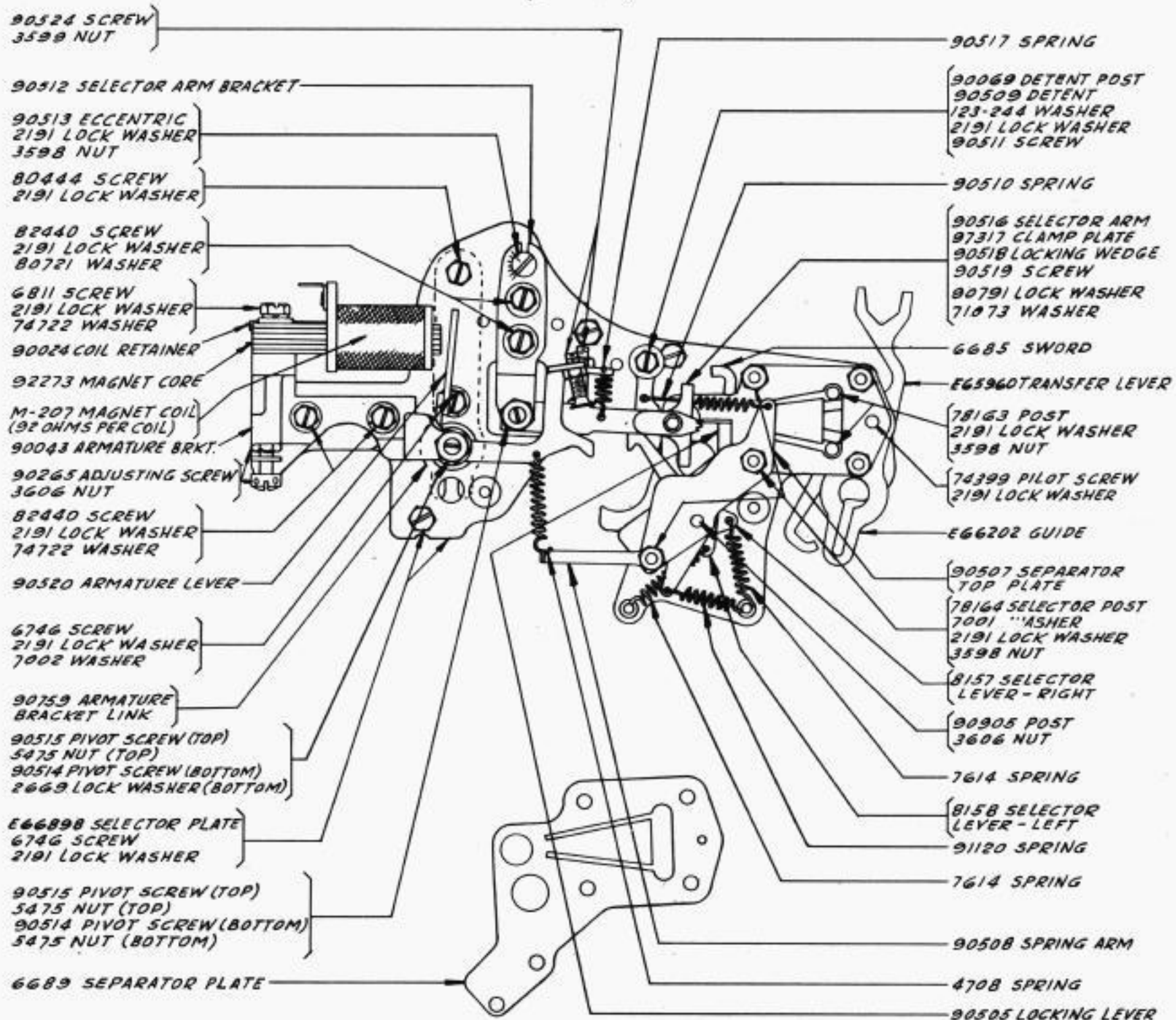




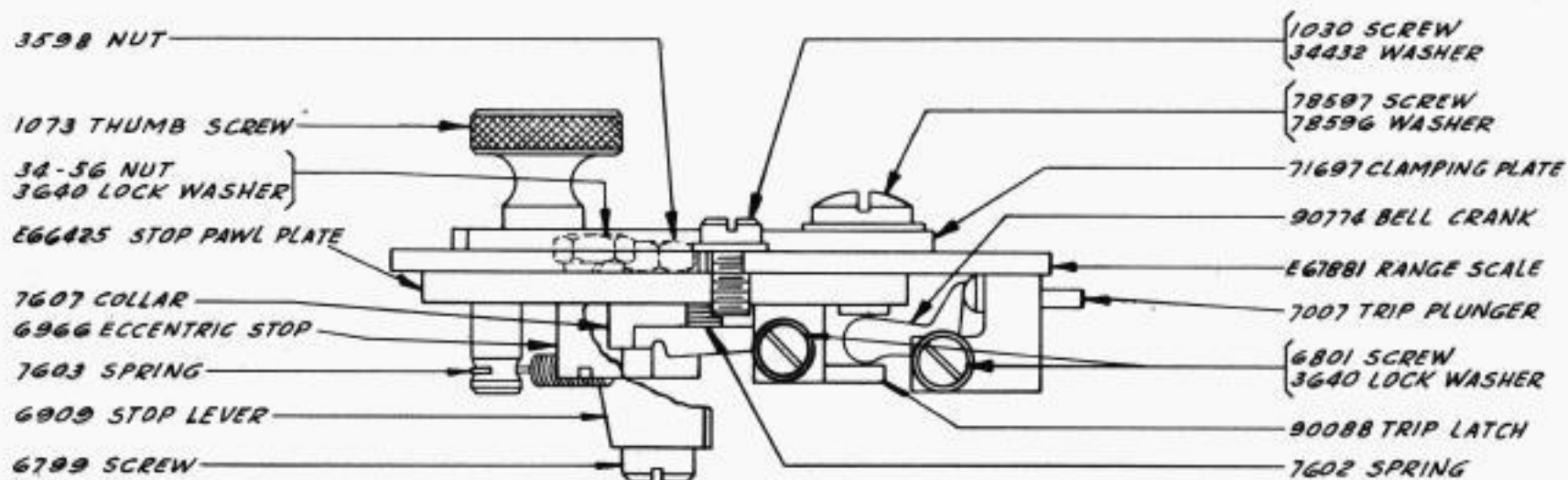
SELECTOR SHAFT (ASSEM.)



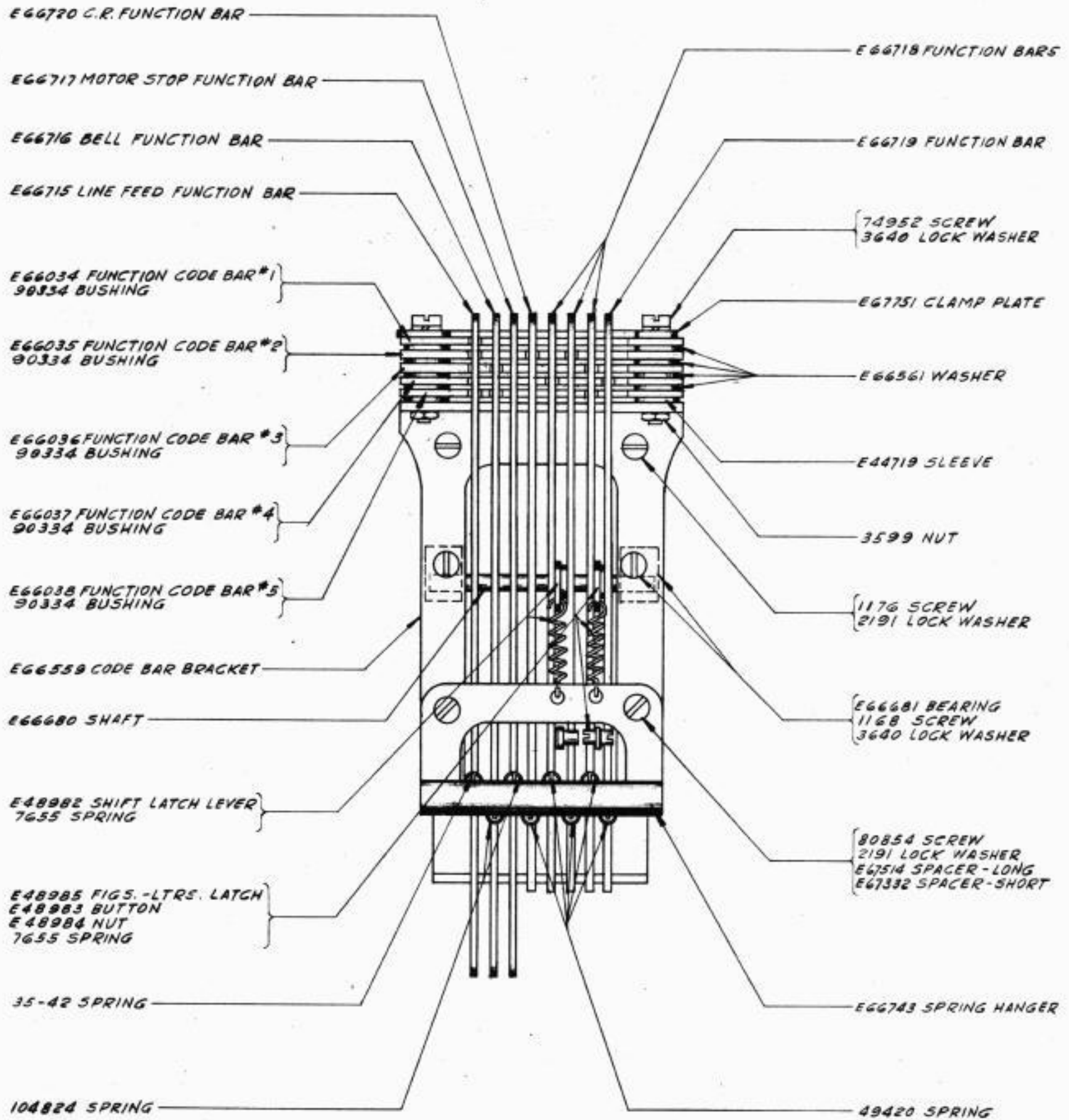
CLUTCH THROW-OUT LEVER



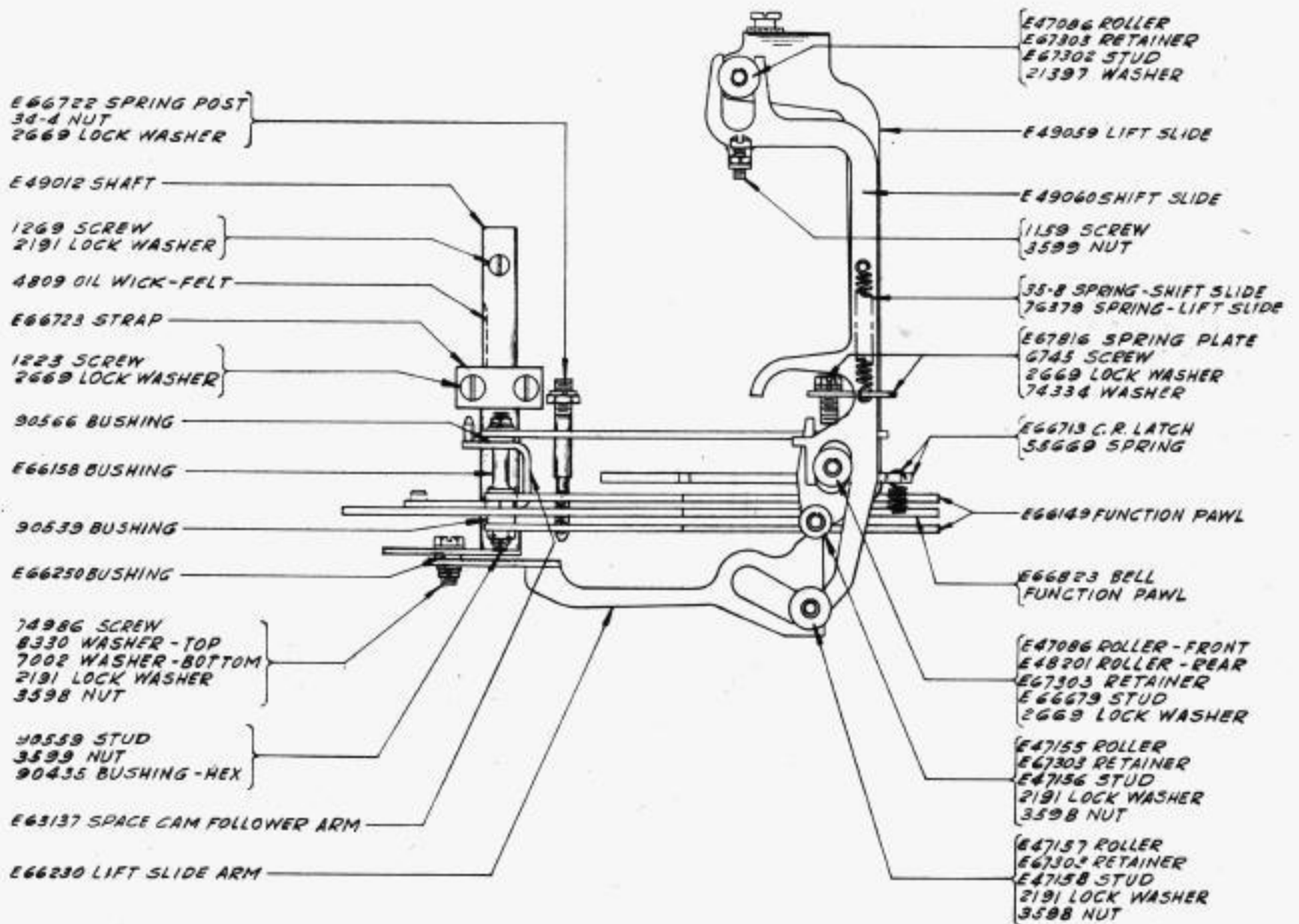
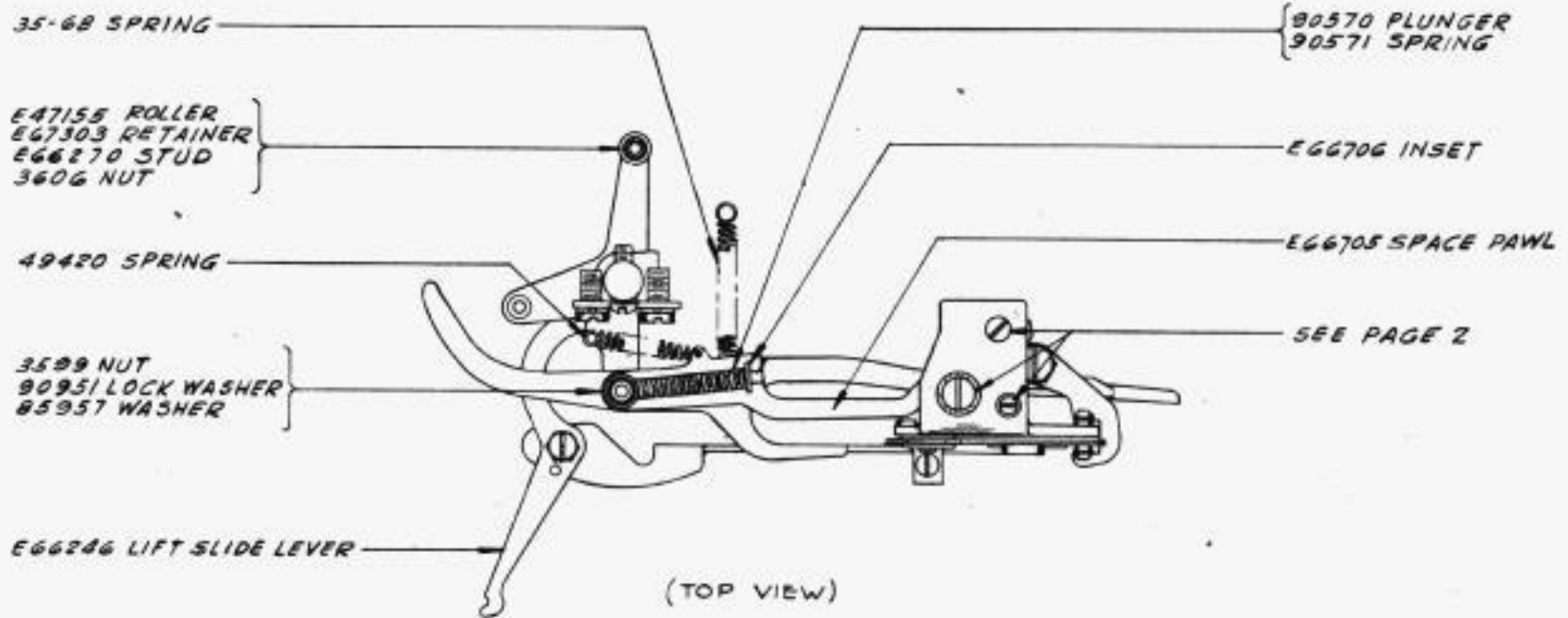
SELECTOR UNIT



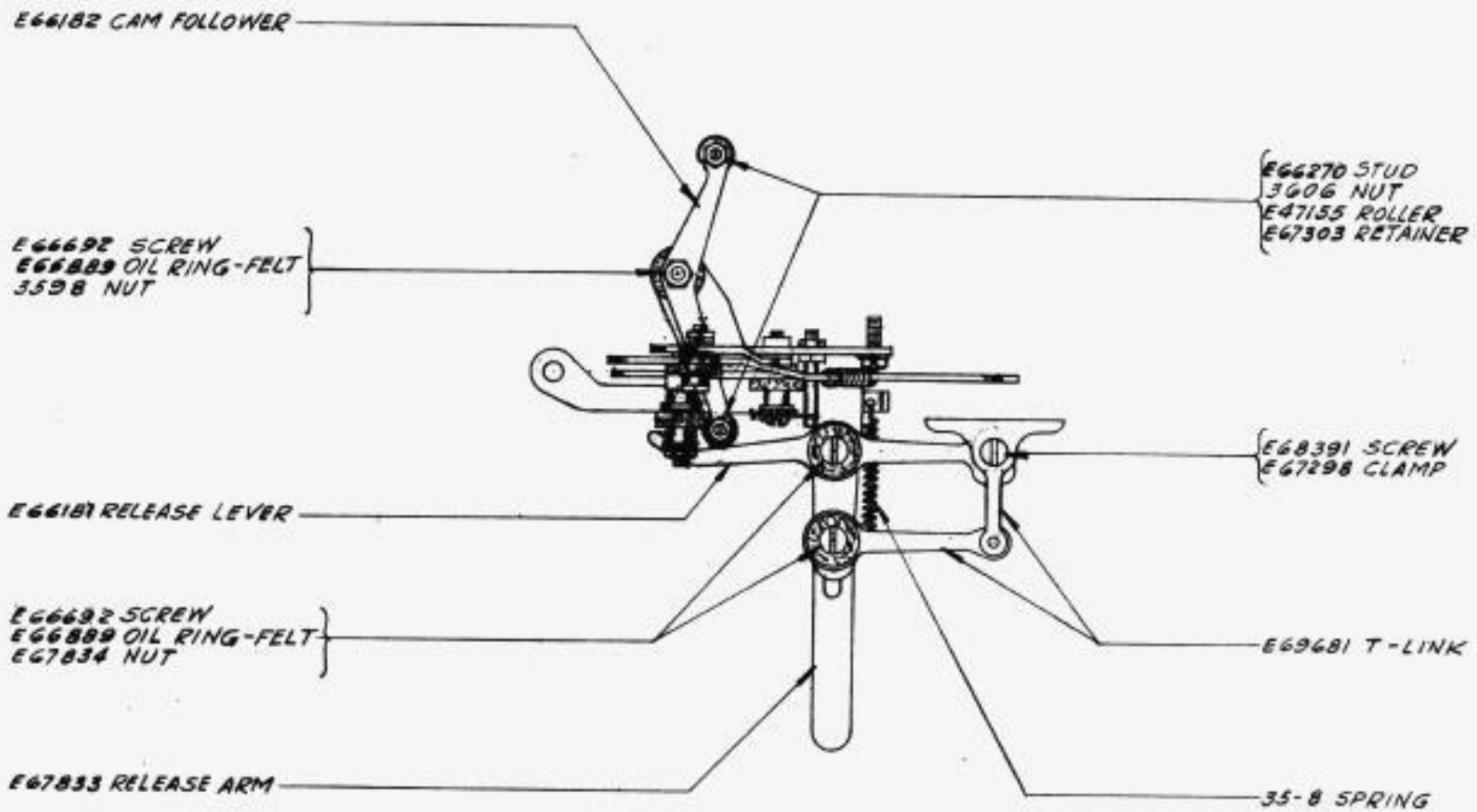
RANGE SCALE (ASSEM.)



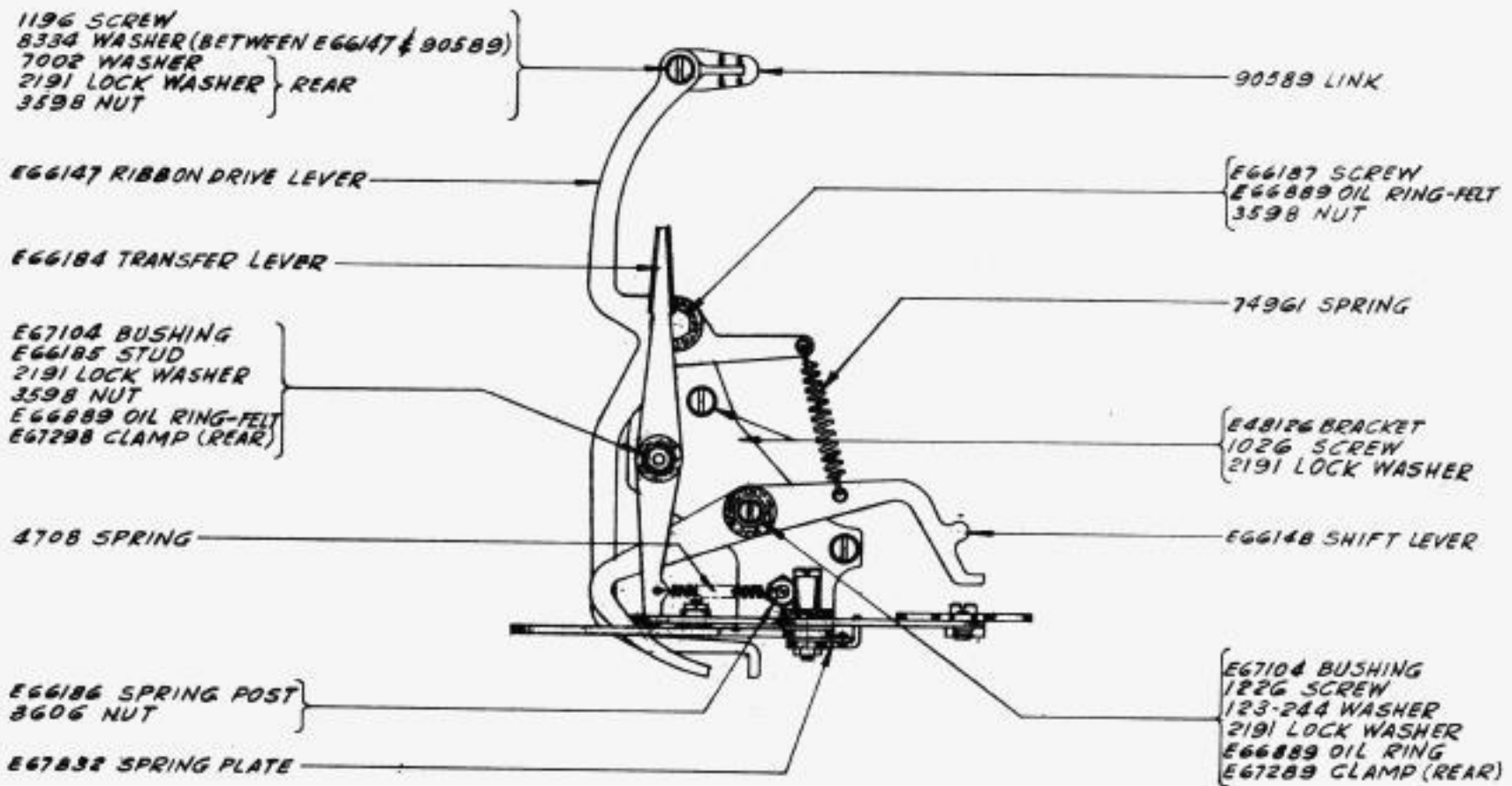
CODE & FUNCTION BAR UNIT



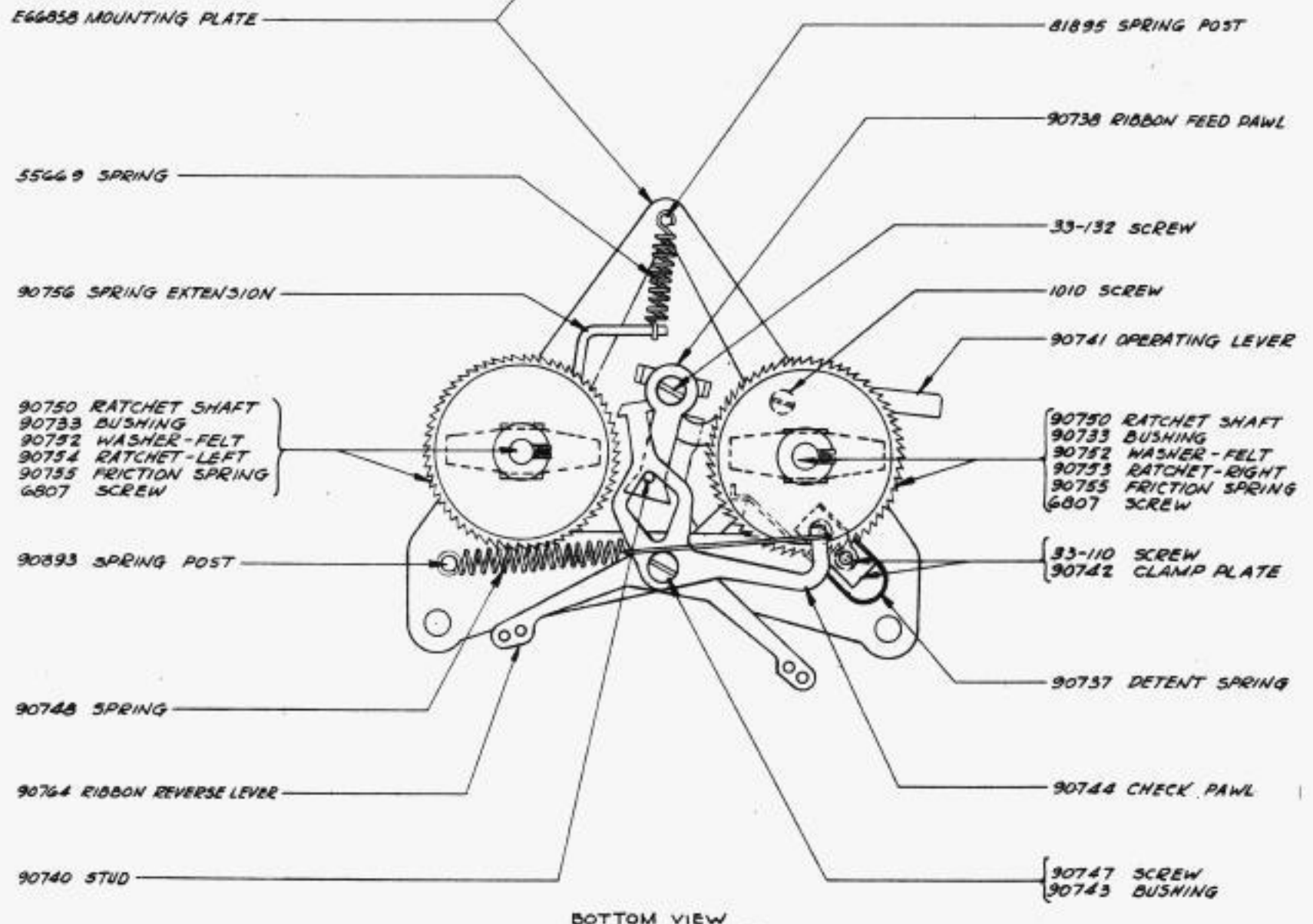
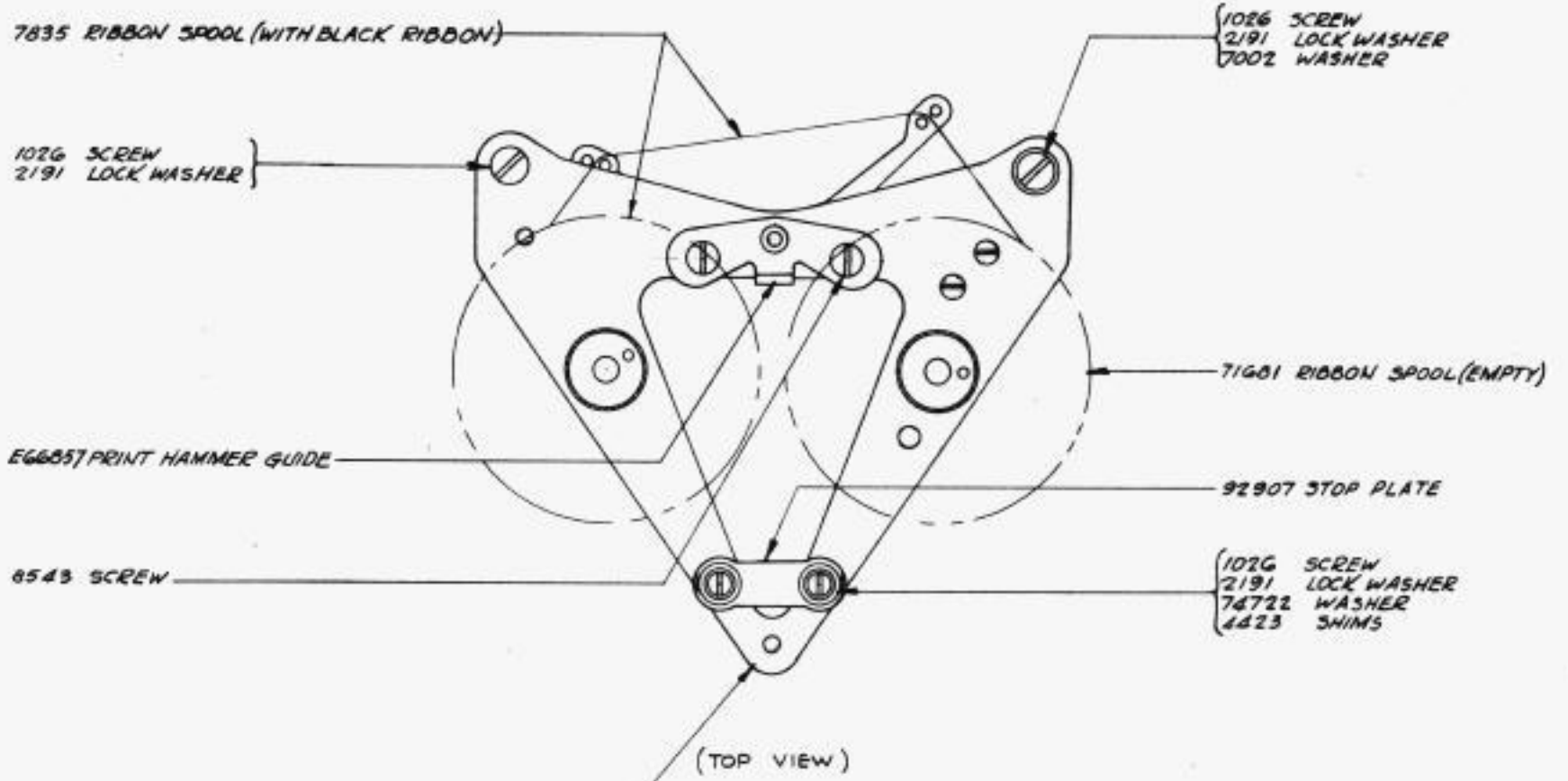
TYPE-WHEEL LIFT & FUNCTION PAWLS
(FRONT VIEW)



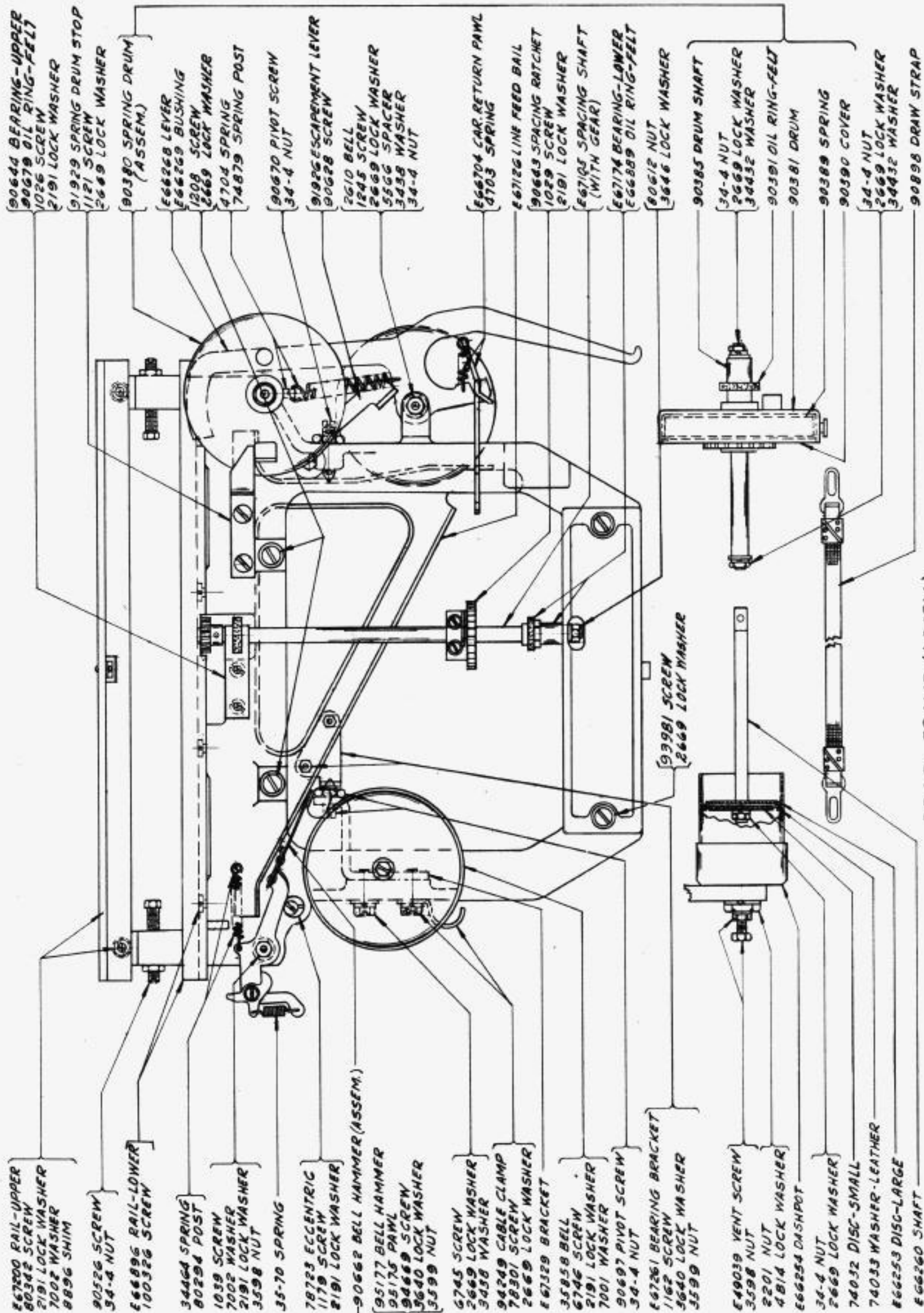
(TOP VIEW)



MISC. FUNCTION LEVERS
(FRONT VIEW)



RIBBON FEED MECHANISM



26700 RAIL-UPPER
80342 SCREW
2191 LOCK WASHER
7002 WASHER
8896 SHIM

90526 SCREW
34-4 NUT

66896 RAIL-LOWER
100326 SCREW

34464 SPRING
80294 POST

1039 SCREW
7002 WASHER
2191 LOCK WASHER
3598 NUT

35-70 SPRING

78723 ECCENTRIC
1179 SCREW
2191 LOCK WASHER

90662 BELL HAMMER (ASSEM.)
95177 BELL HAMMER
95178 PAWL
94669 SCREW
3640 LOCK WASHER
3599 NUT

6745 SCREW
2669 LOCK WASHER
3438 WASHER

94249 CABLE CLAMP
78301 SCREW
2669 LOCK WASHER

67329 BRACKET

35858 BELL
6746 SCREW
2191 LOCK WASHER
7001 WASHER

90697 PIVOT SCREW
34-4 NUT

67261 BEARING BRACKET
1162 SCREW
3640 LOCK WASHER
3599 NUT

649039 VENT SCREW
3598 NUT

2201 NUT
4814 LOCK WASHER

666254 DASHPOT

34-4 NUT
2669 LOCK WASHER

74032 DISC-SMALL
74033 WASHER-LEATHER
866253 DISC-LARGE

66260 SHAFT

90644 BEARING-UPPER
90679 OIL RING-FELT
1026 SCREW
2191 LOCK WASHER

91929 SPRING DRUM STOP
1121 SCREW
2669 LOCK WASHER

90380 SPRING DRUM (ASSEM.)

666268 LEVER
666269 BUSHING

1208 SCREW
2669 LOCK WASHER
4704 SPRING
74879 SPRING POST

90670 PIVOT SCREW
34-4 NUT

91926 ESCAPEMENT LEVER
90628 SCREW

2610 BELL
1245 SCREW
2669 LOCK WASHER
5566 SPACER
3438 WASHER
34-4 NUT

666704 CAR RETURN PAWL
4703 SPRING

67126 LINE FEED BAIL
90643 SPACING RATCHET
1029 SCREW
2191 LOCK WASHER

66705 SPACING SHAFT (WITH GEAR)

66716 BEARING-LOWER
66689 OIL RING-FELT

60612 NUT
3646 LOCK WASHER

90385 DRUM SHAFT

34-4 NUT
2669 LOCK WASHER
34432 WASHER

90391 OIL RING-FELT

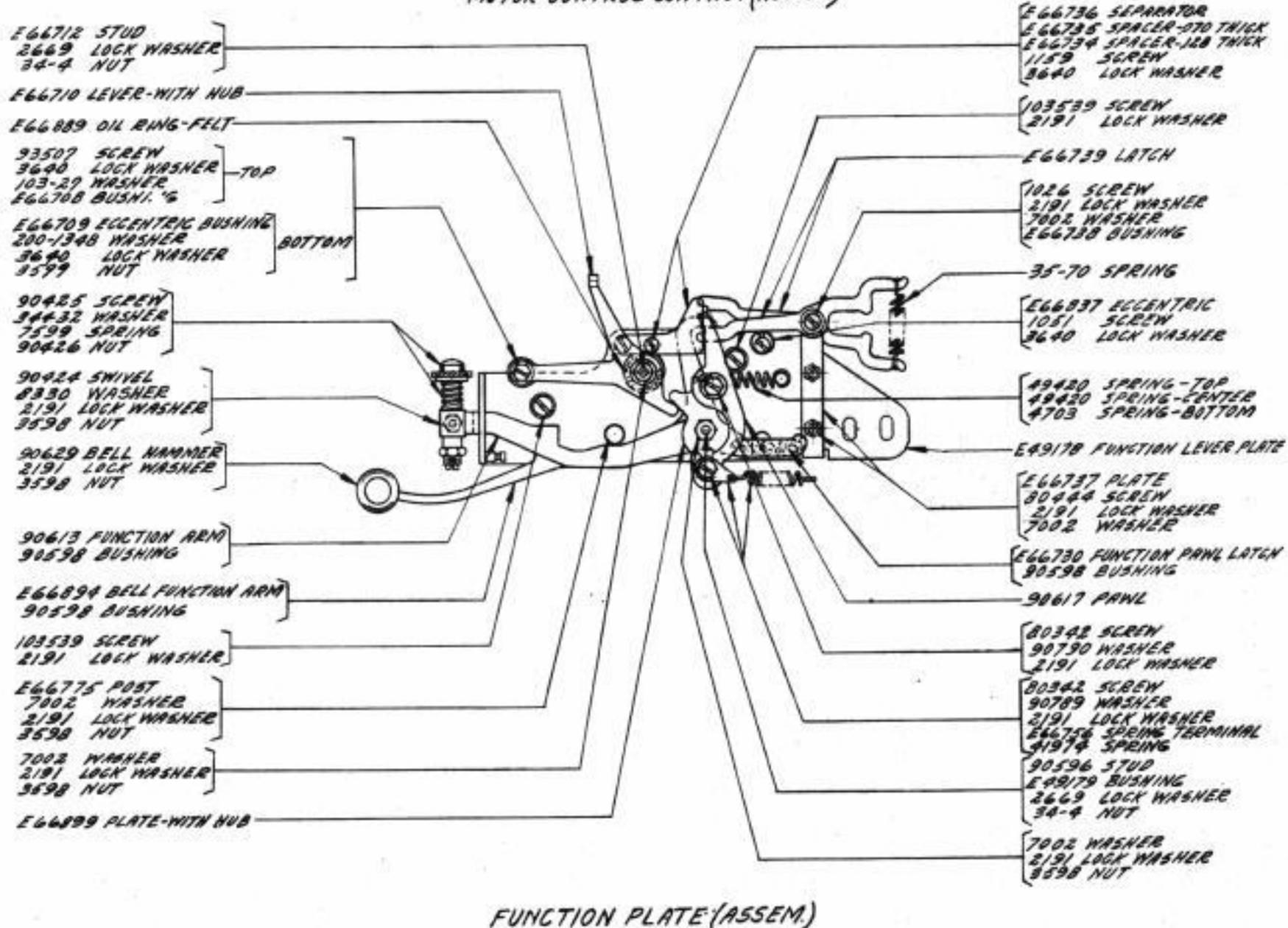
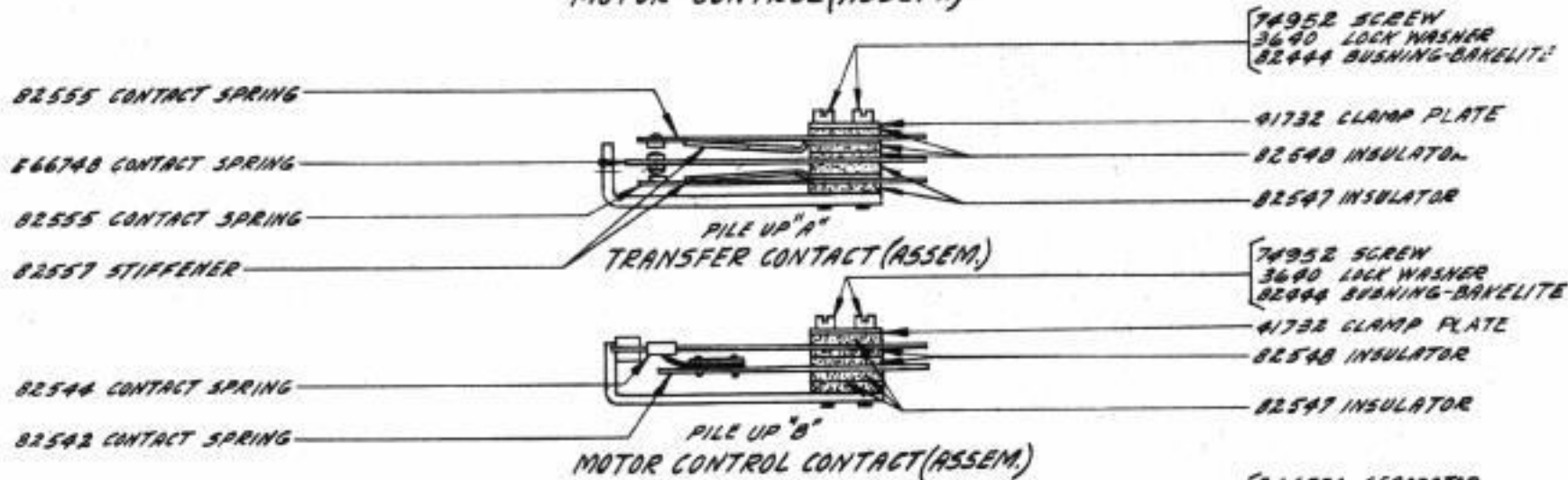
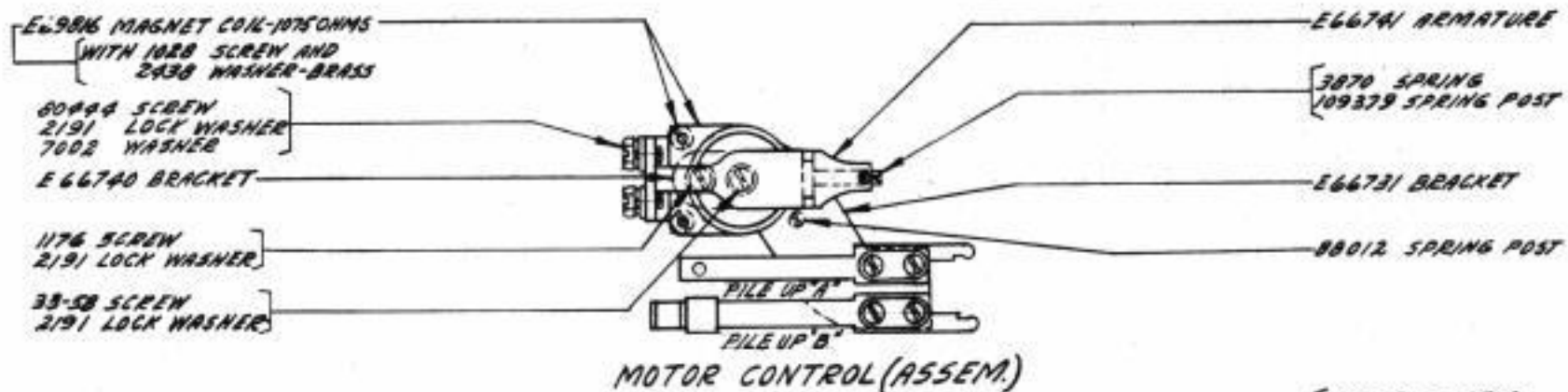
90381 DRUM

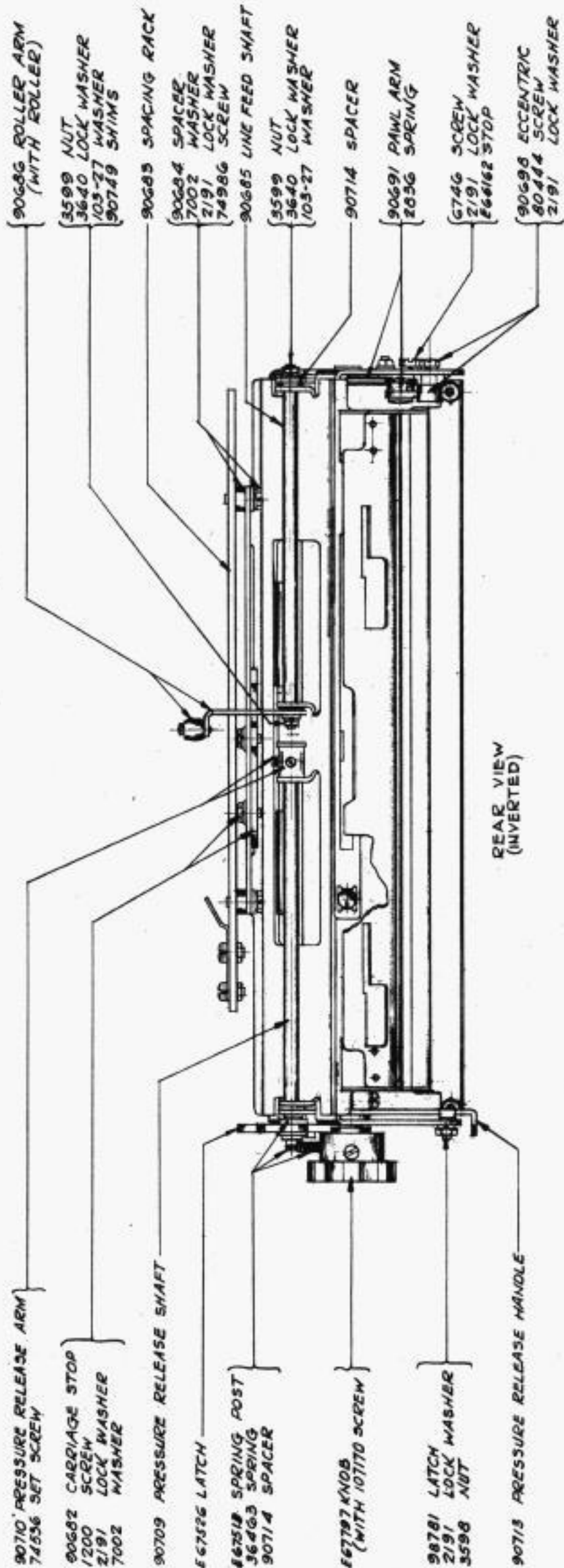
90389 SPRING
90390 COVER

34-4 NUT
2669 LOCK WASHER
34432 WASHER

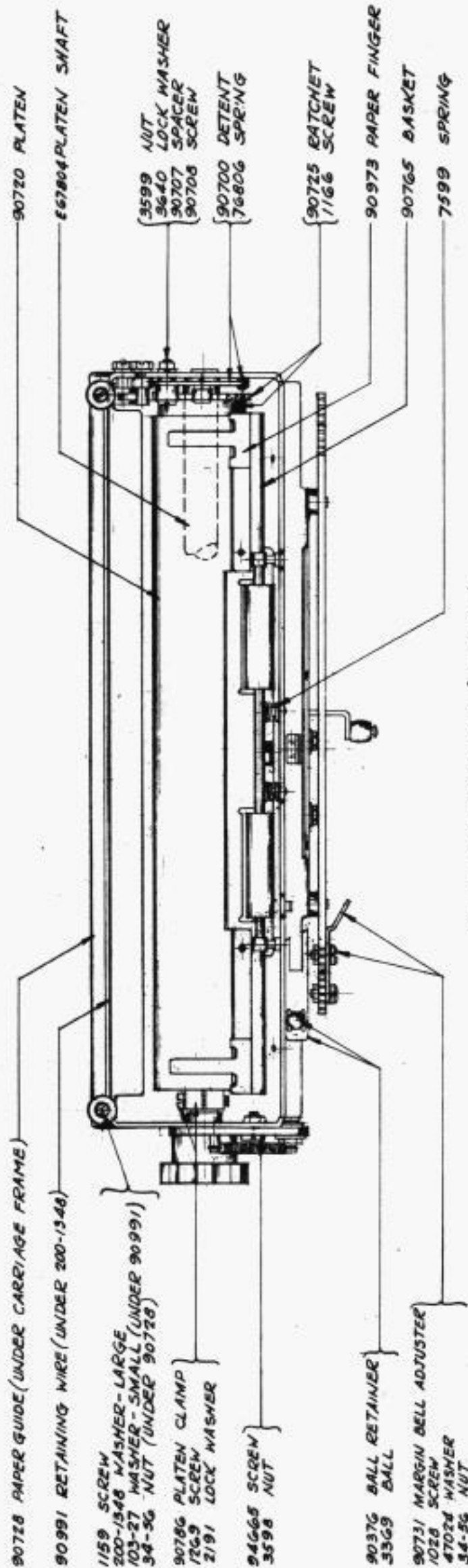
90896 DRAW STRAP

REAR FRAME (ASSEM.)

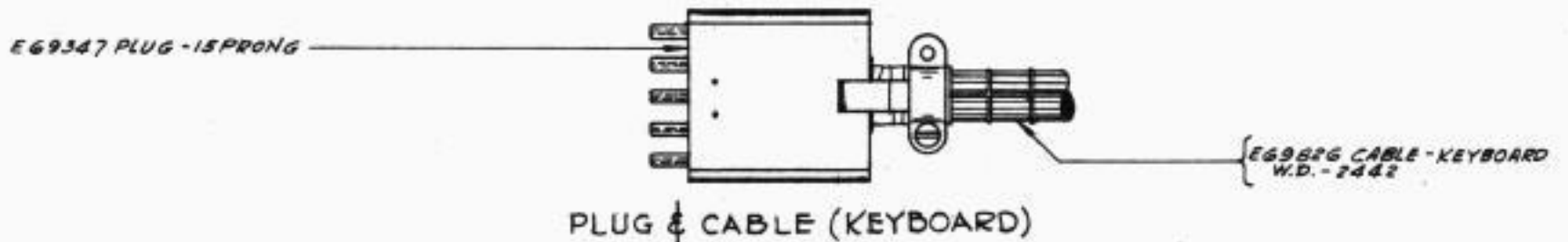
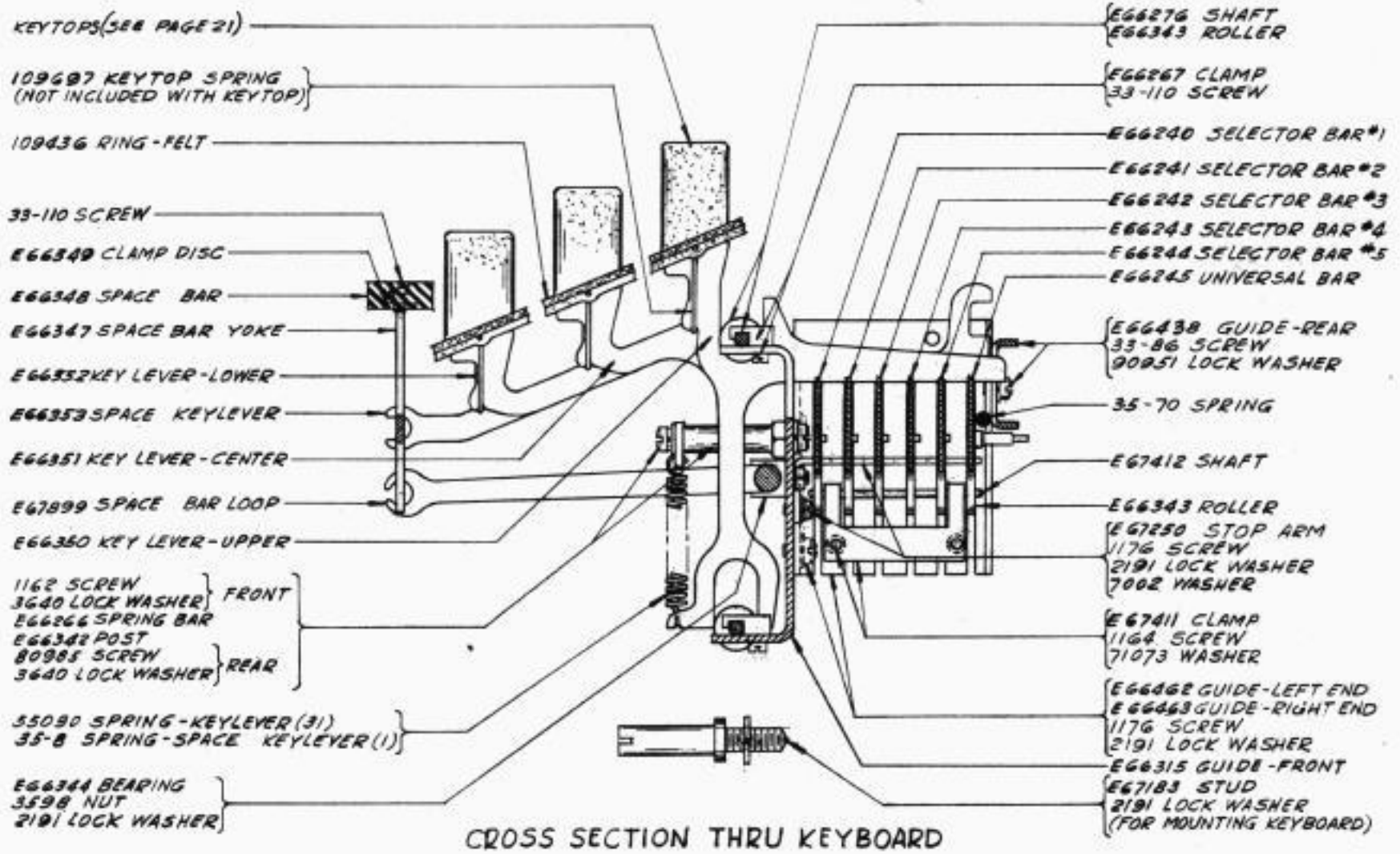
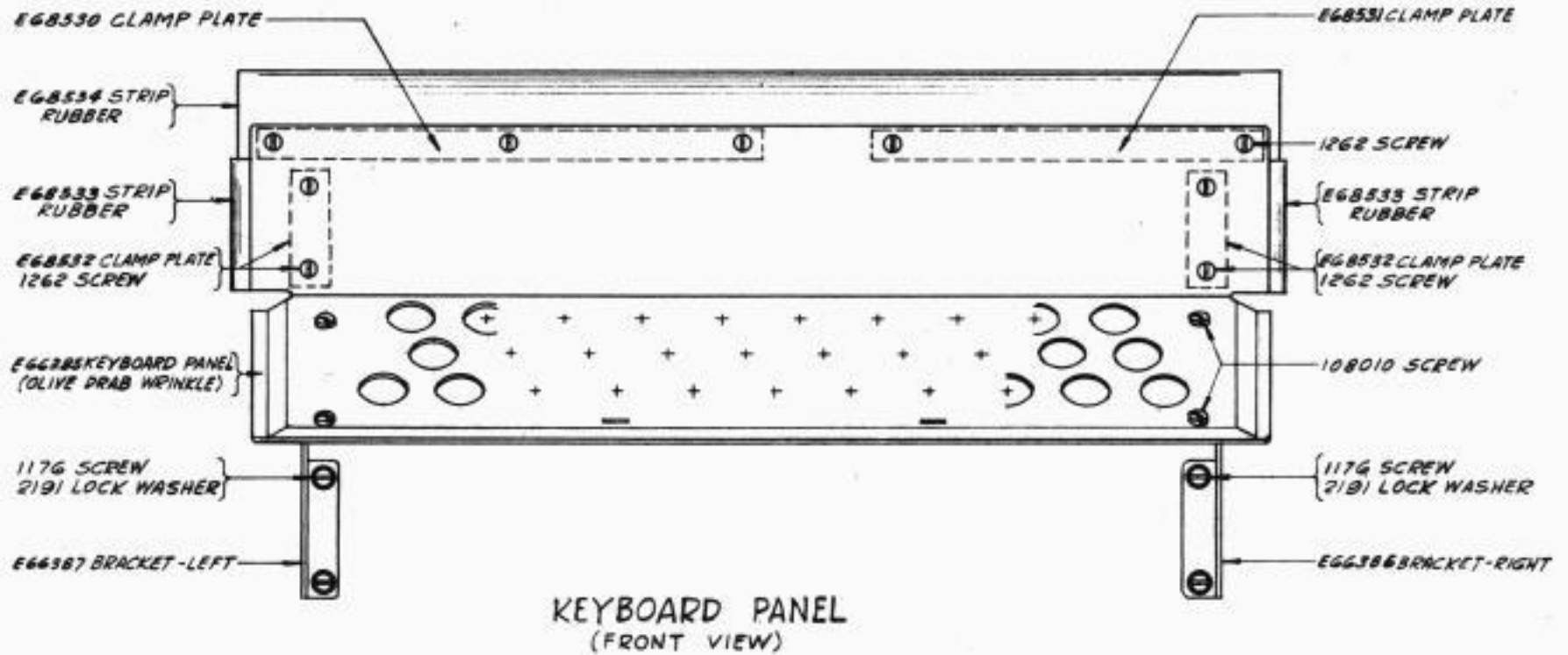


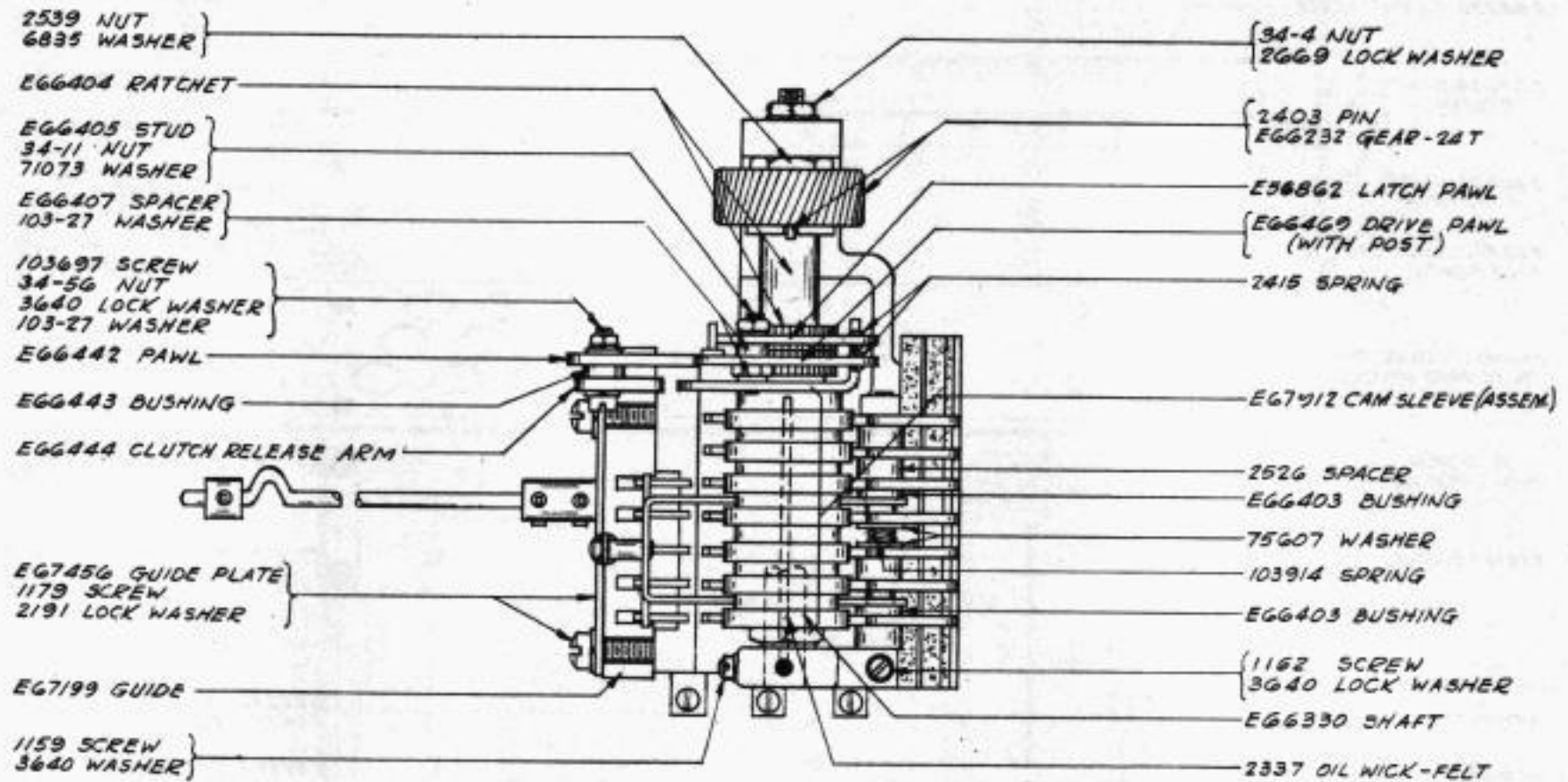


REAR VIEW
(INVERTED)

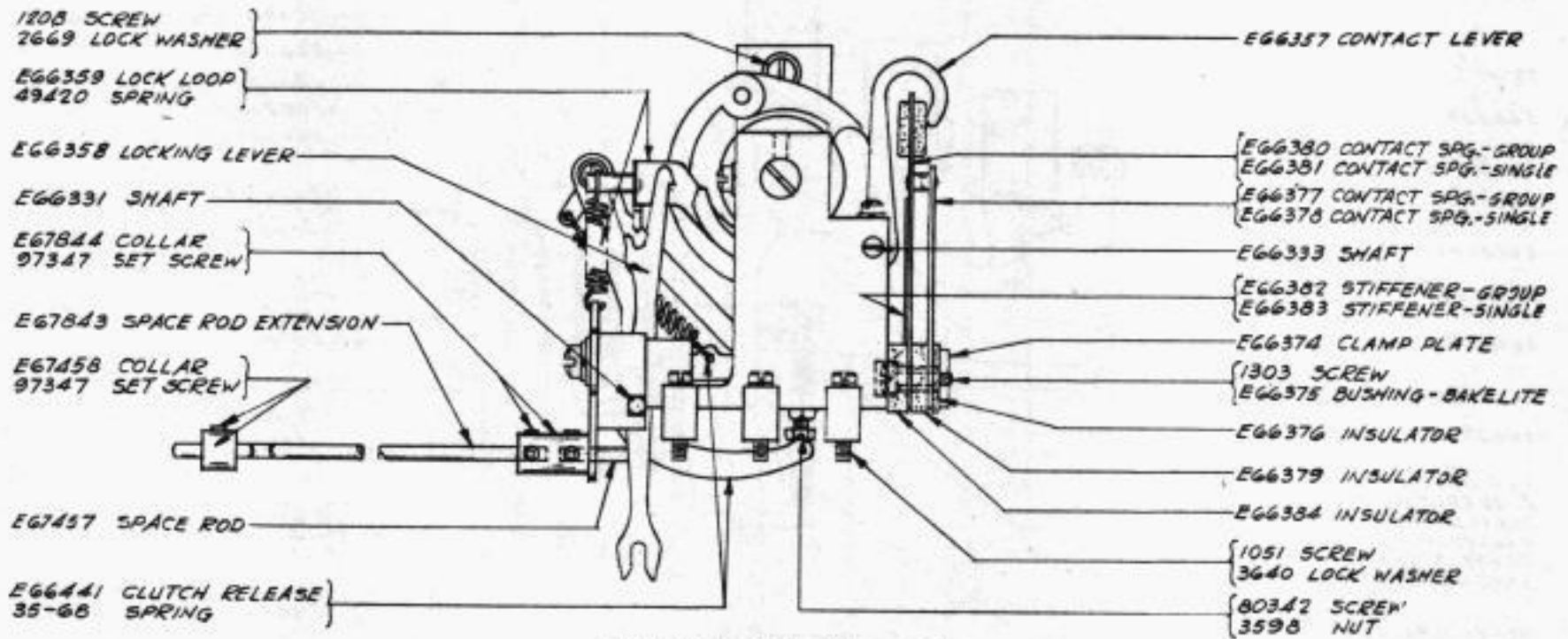


PLATEN CARRIAGE (ASSEM.)
(FRONT VIEW)

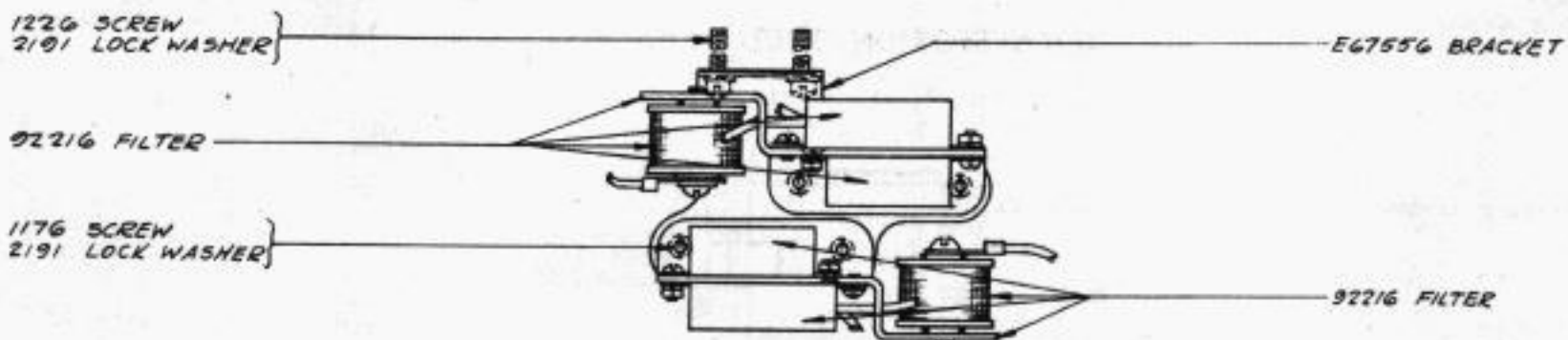




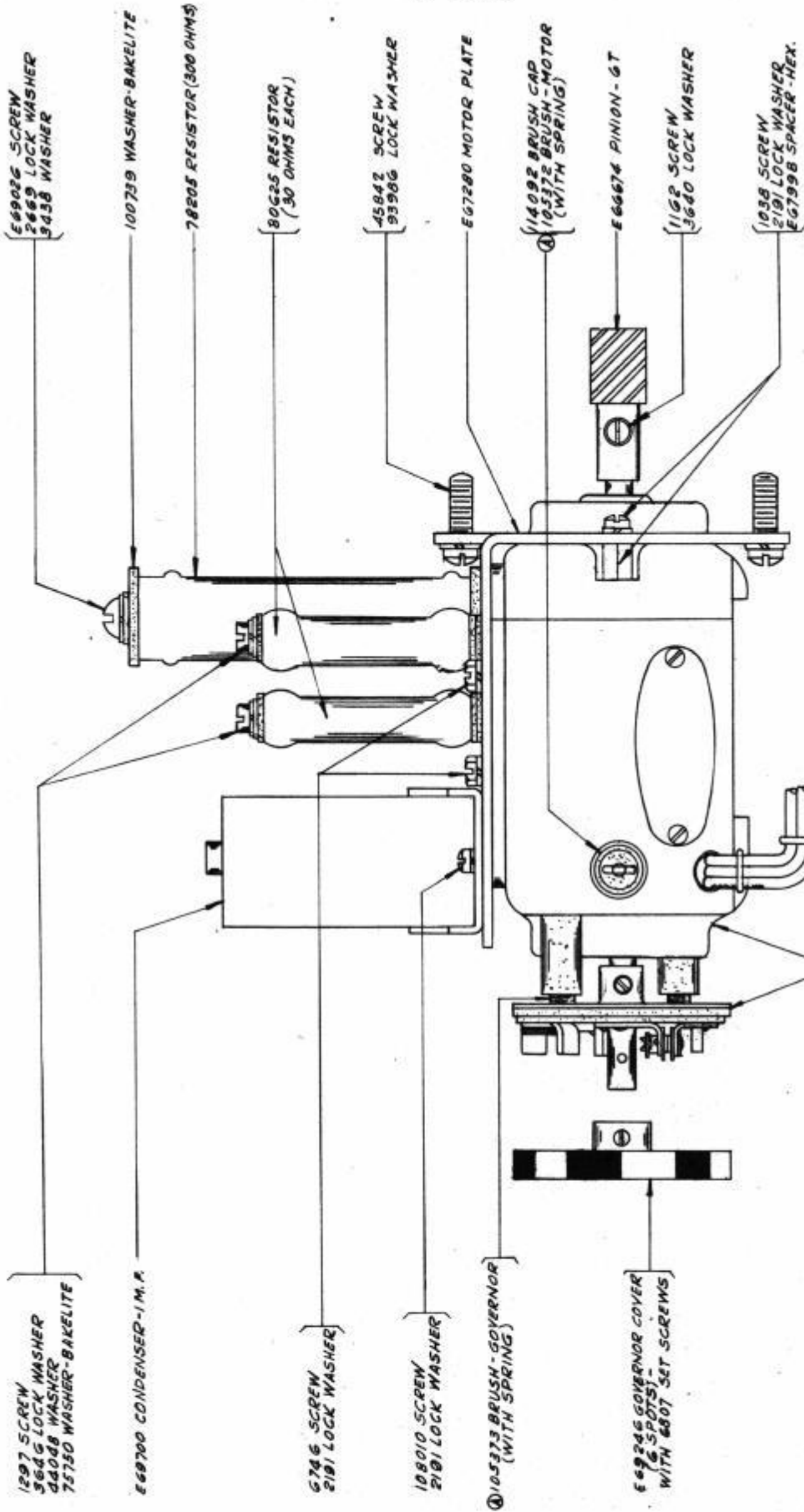
TOP VIEW



TRANSMITTER (ASSEM.)
FRONT VIEW



FILTER (ASSEM.)



1297 SCREW
3646 LOCK WASHER
4408 WASHER
75750 WASHER-BAKELITE

E69026 SCREW
2669 LOCK WASHER
3438 WASHER

E69700 CONDENSER-1 M.F.

100739 WASHER-BAKELITE

6746 SCREW
2191 LOCK WASHER

80625 RESISTOR
(30 OHMS EACH)

108010 SCREW
2191 LOCK WASHER

45842 SCREW
93986 LOCK WASHER

① 105373 BRUSH-GOVERNOR
(WITH SPRING)

E67280 MOTOR PLATE

E69246 GOVERNOR COVER
(6 SPOTS)
WITH 6807 SET SCREWS

① 14092 BRUSH CAP
105372 BRUSH-MOTOR
(WITH SPRING)

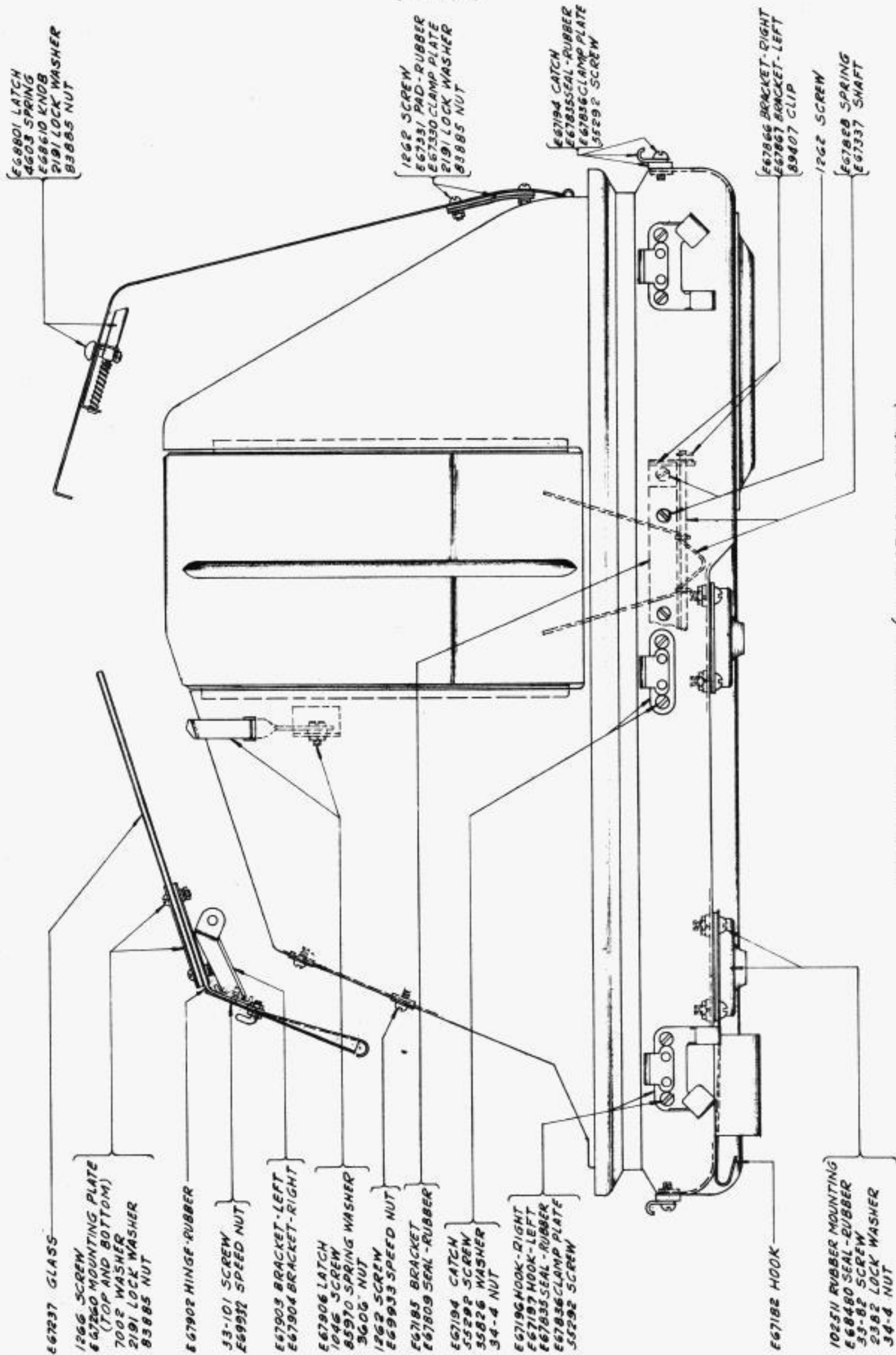
E66674 PINION-GT

1162 SCREW
3640 LOCK WASHER

1038 SCREW
2191 LOCK WASHER
E67998 SPACER-HEX.

105365 MOTOR, 1/60 H.P. 115V. 60 CYCLE
(G. E. MODEL 5B366A57)
INCLUDES 105371 GOVERNOR AND
PARTS MARKED ①

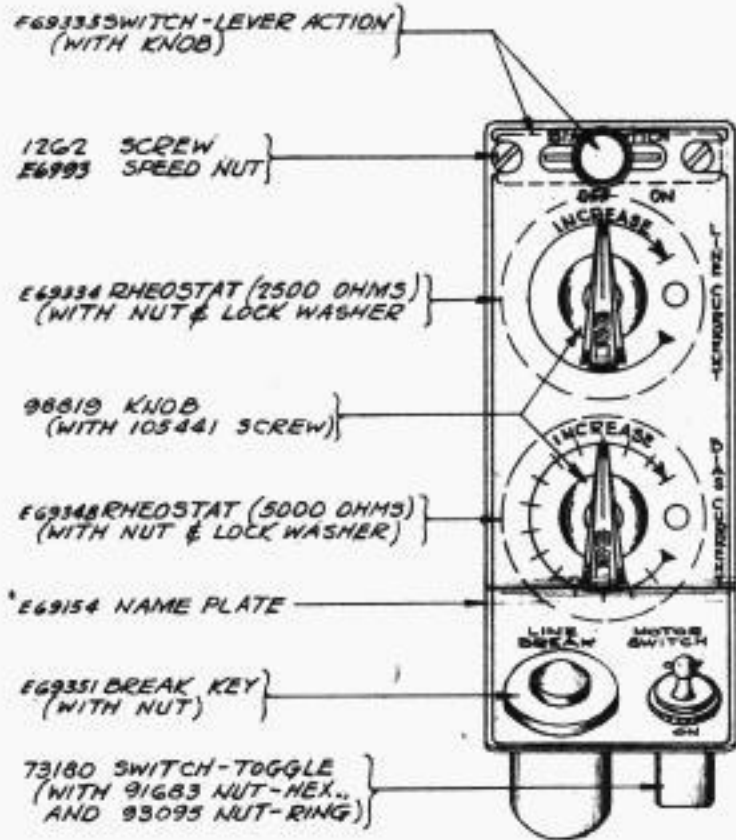
MOTOR (ASSEM.)



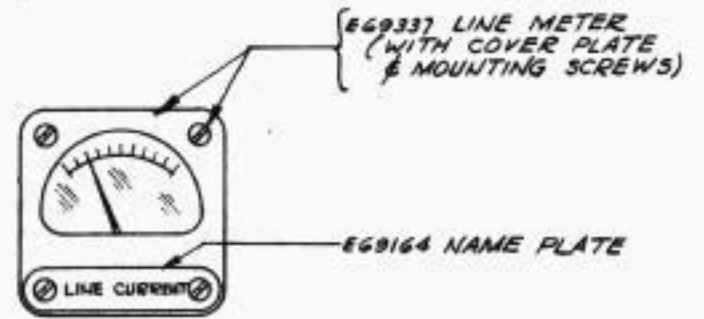
COVER - LOWER SECTION (OLIVE DRAB WRINKLE)
(RIGHT END VIEW)

SEE PAGES 16, 17 & 18 FOR MISC. PARTS MOUNTED INSIDE OF COVER.

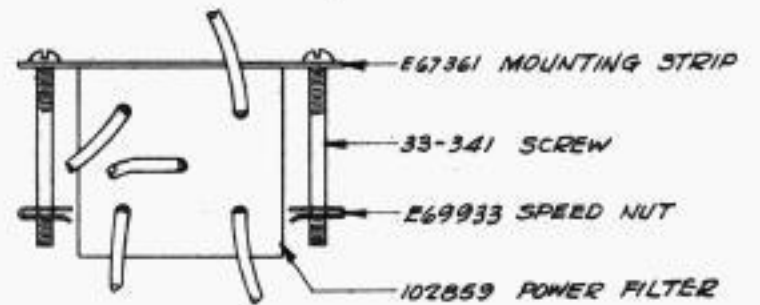
MISC. EQUIPMENT MOUNTED IN COVER-LOWER SECTION



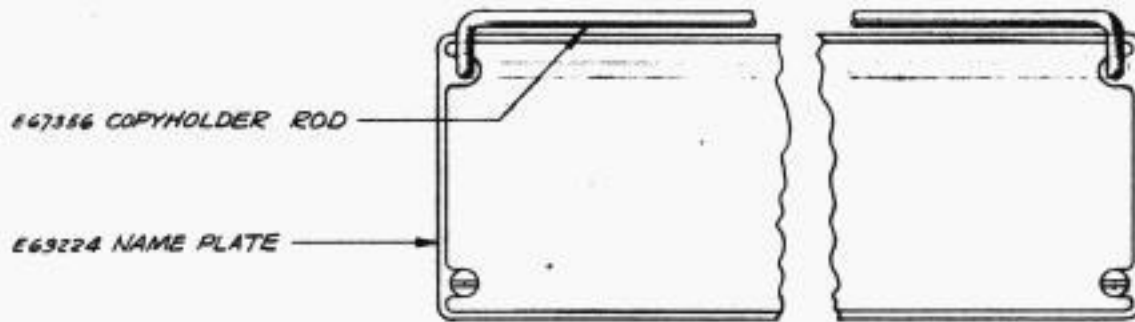
CONTROL PANEL



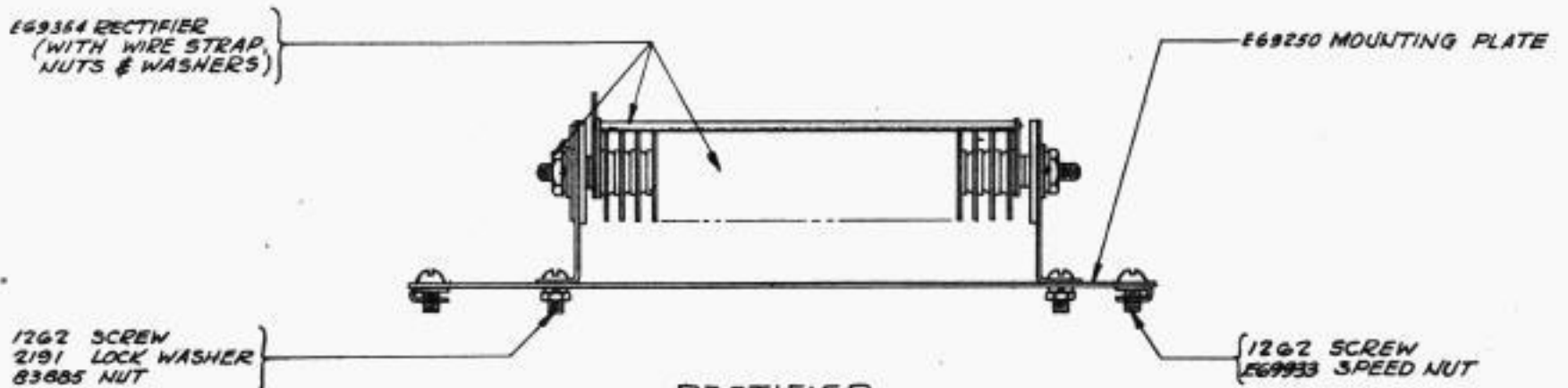
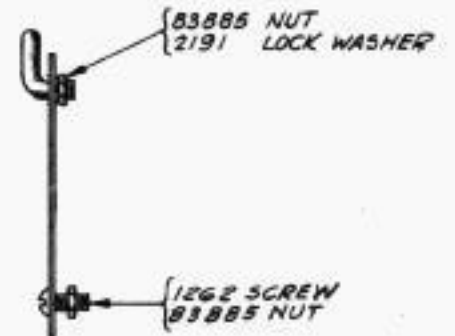
LINE METER



POWER FILTER

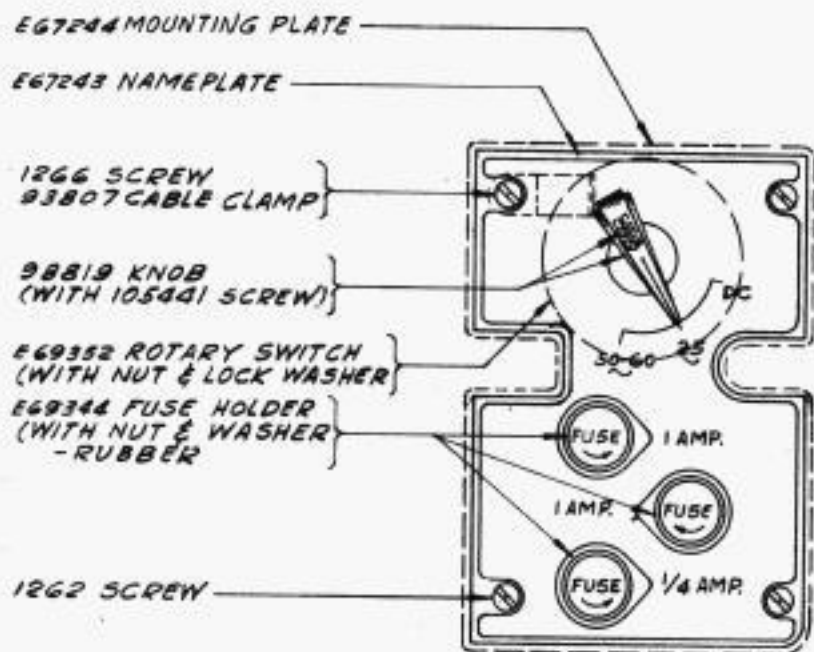


COPYHOLDER

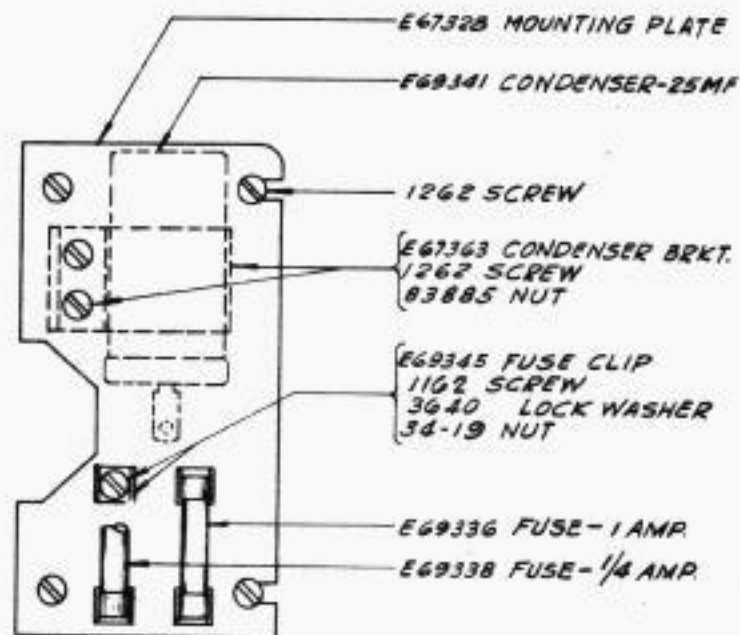


RECTIFIER

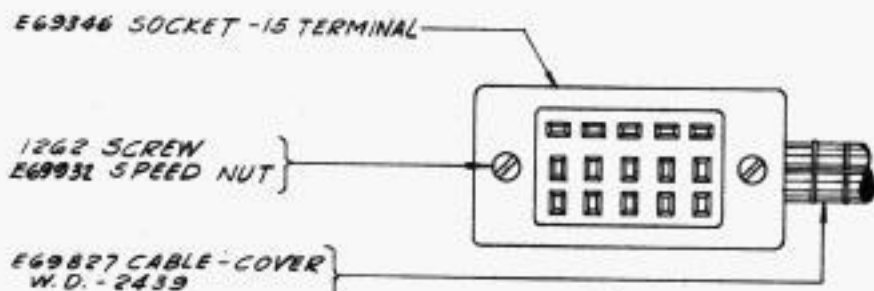
MISC. EQUIPMENT MOUNTED IN COVER-LOWER SECTION



POWER SUPPLY PANEL



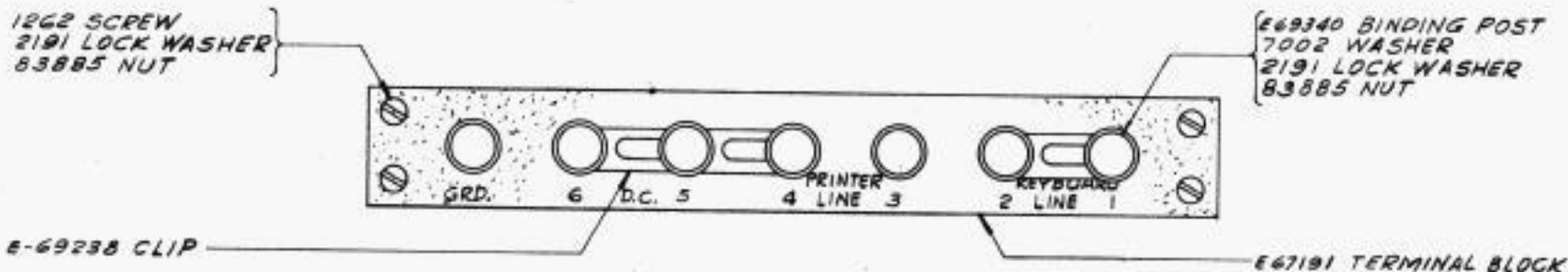
CONDENSER AND SPARE FUSE BRACKET



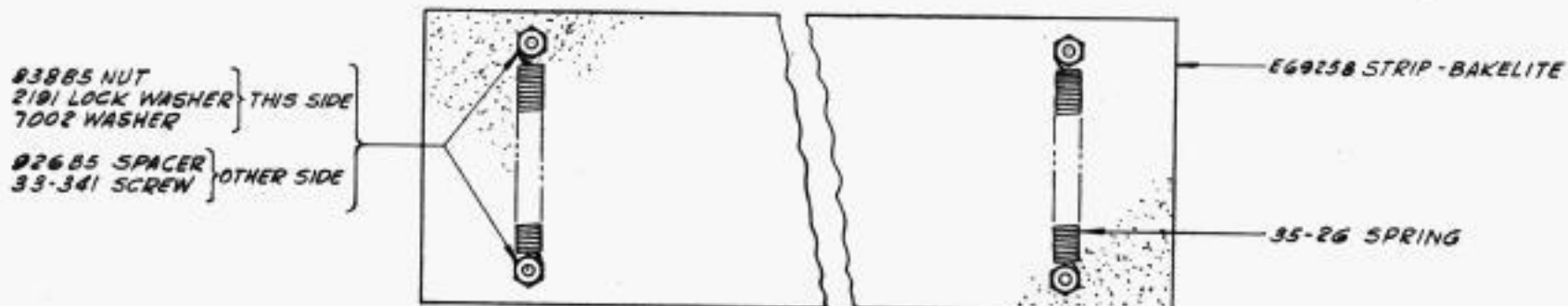
SOCKET & CABLE



RESISTOR

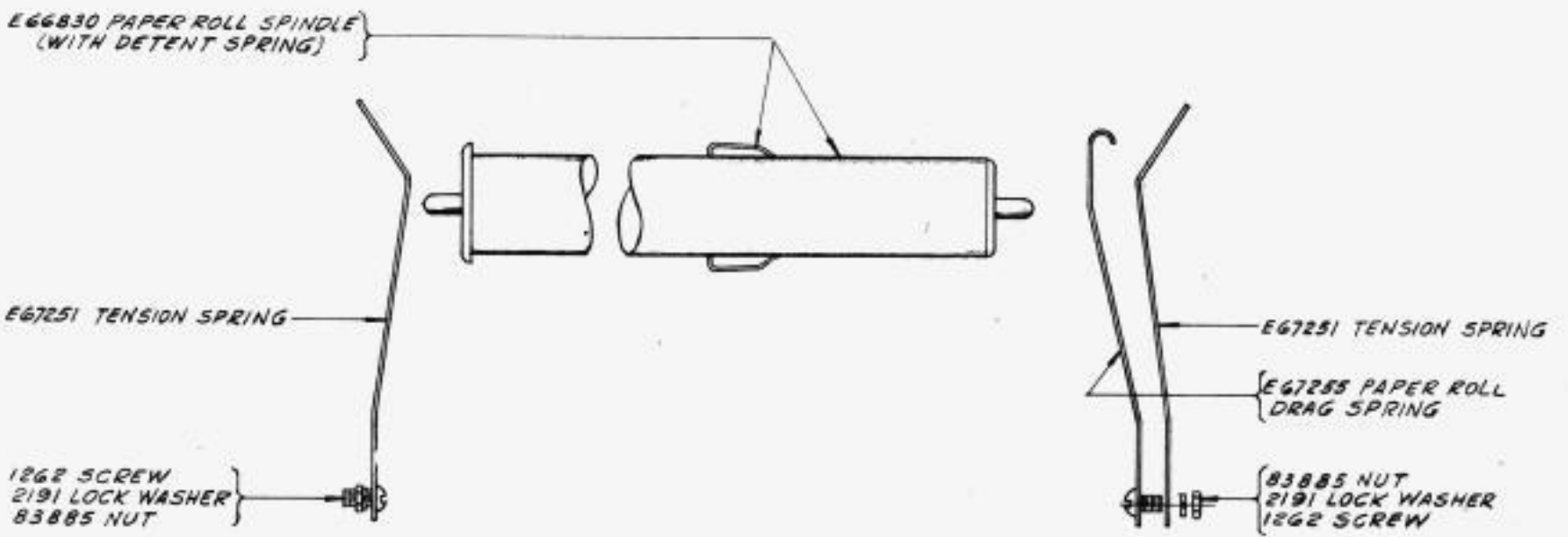
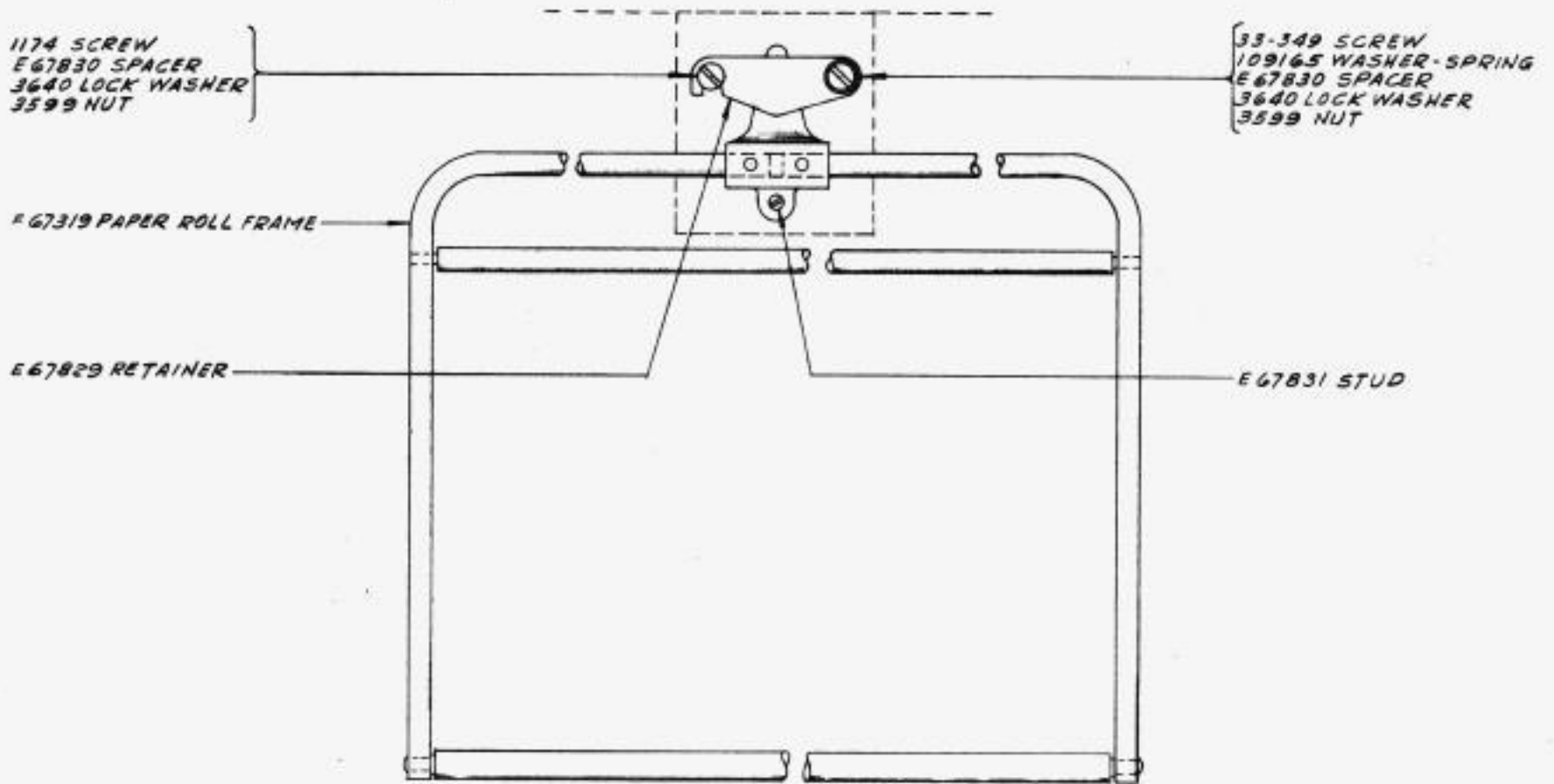


TERMINAL BLOCK

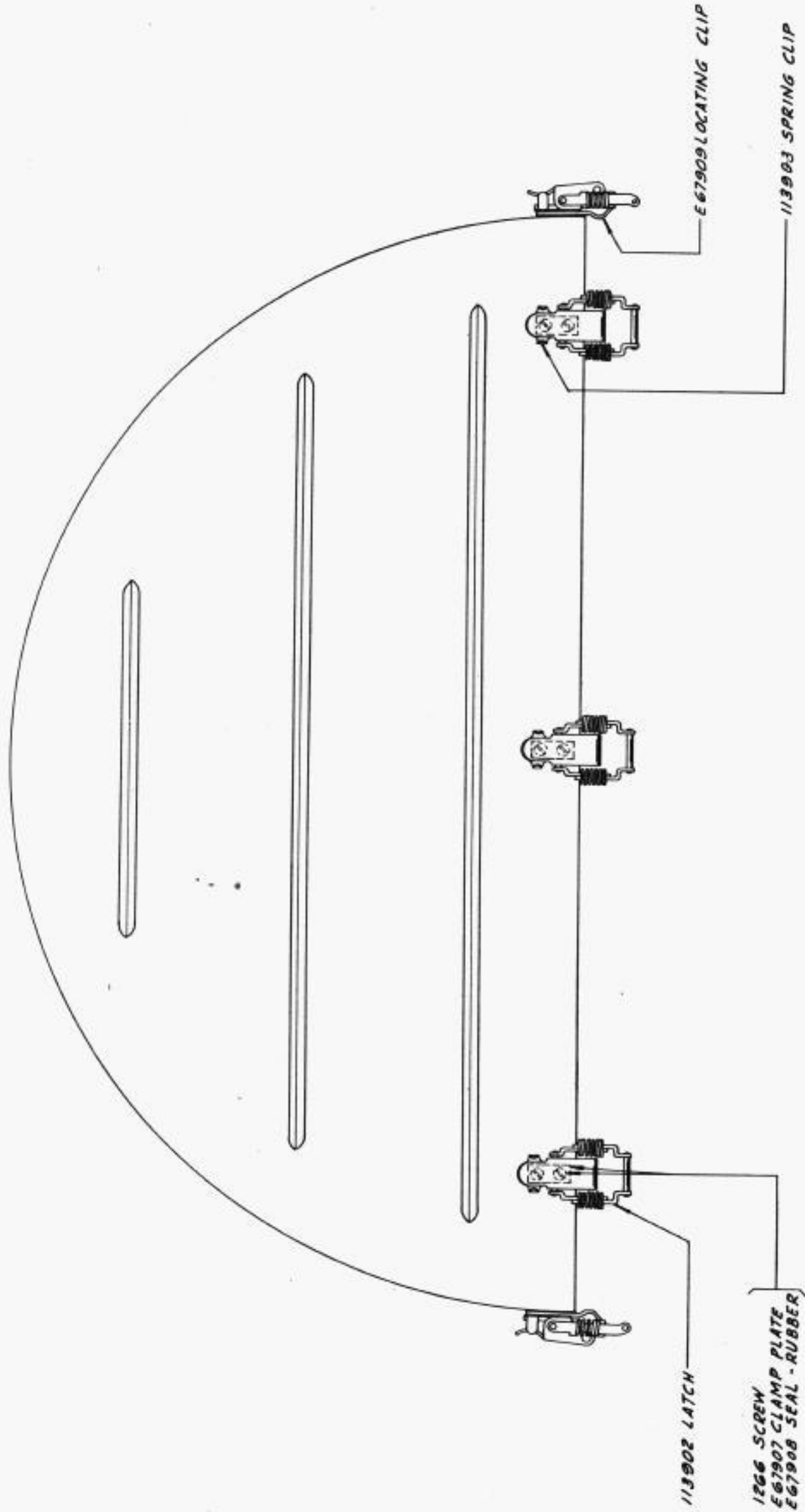


TUNING FORK HOLDER

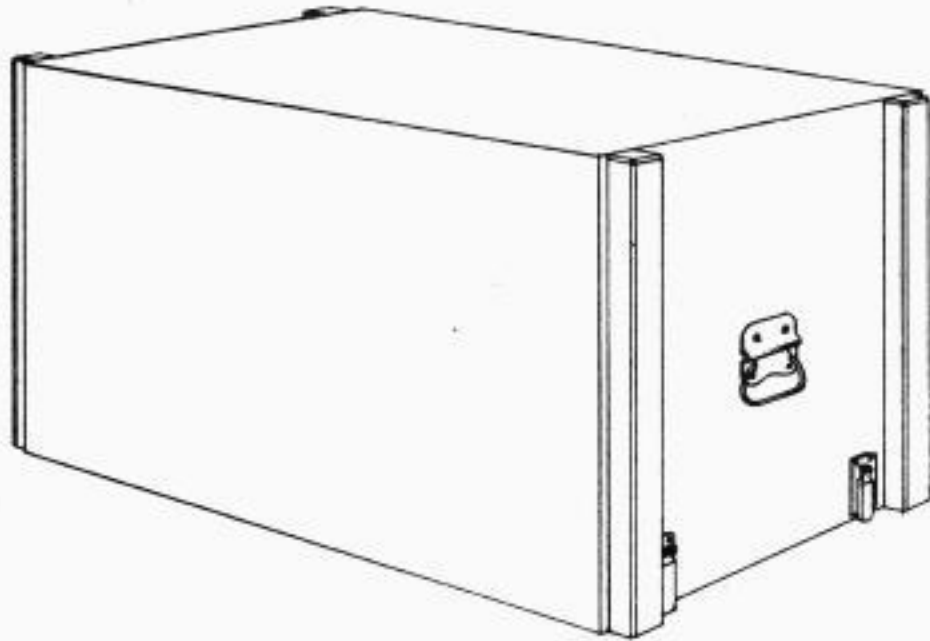
MISC. EQUIPMENT MOUNTED IN COVER-LOWER SECTION



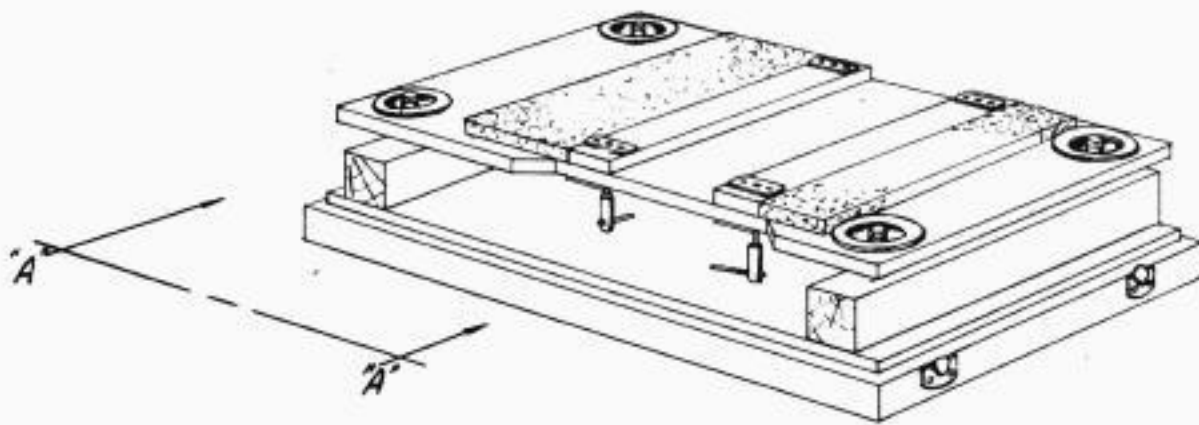
PAPER ROLL SPINDLE



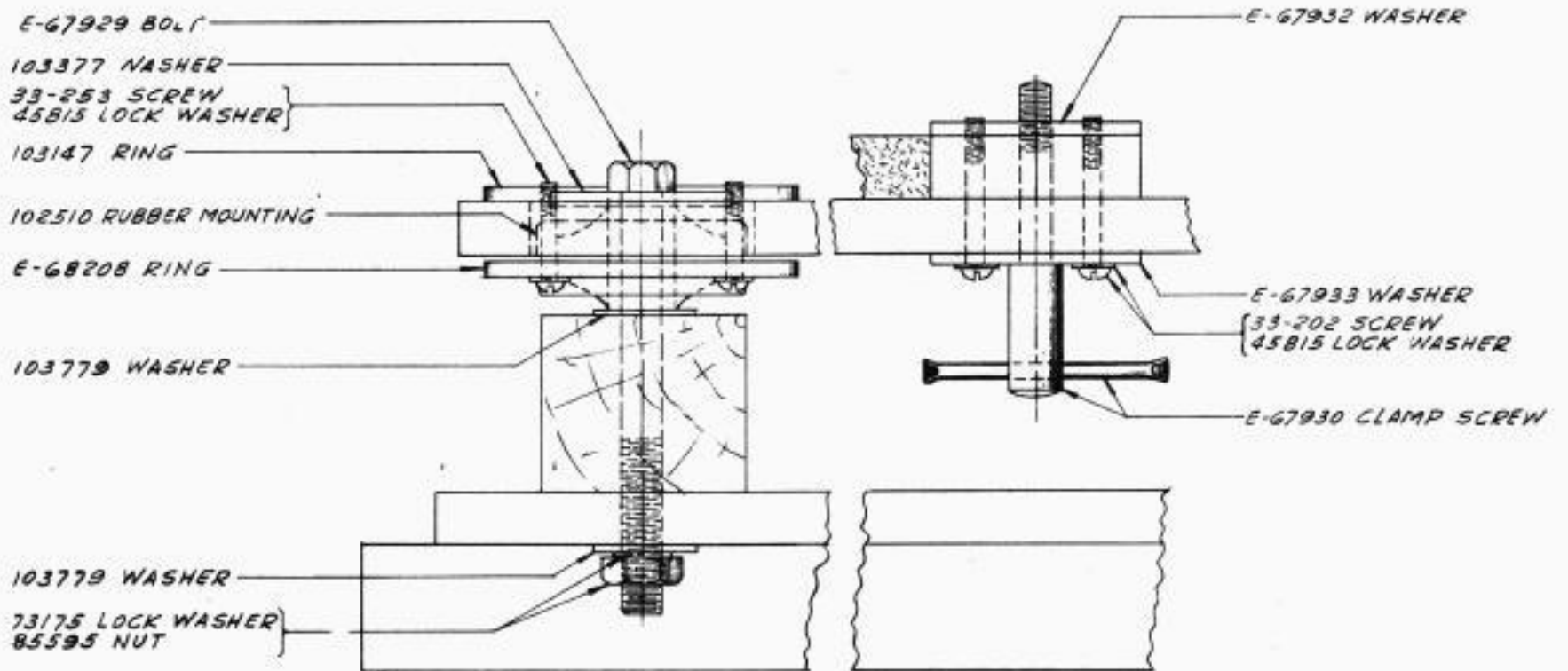
COVER - UPPER SECTION (OLIVE DRAB WRINKLE)
(RIGHT END VIEW)



COVER



BASE



ELEVATION "A-A" (ENLARGED)

E67934 CARRYING CASE (ASSEM.) - OLIVE DRAB

KEYTOPS & TYPE PALLETS					
KEYTOPS			TYPE PALLETS		
DESC.	PART NUMBERS	DESC.	PART NUMBERS	DESC.	PART NUMBERS
A -	E69782	A	90831	-	90883
B ?	E69797	B	90832	?	90878
C :	E69795	C	90833	:	90886
D \$	E69784	D	90834	\$	90875
E 3	E69774	E	90835	3	90861
F !	E69785	F	90836	!	90879
G &	E69786	G	90837	&	90877
H STOP	E69787	H	90838	BLANK	90858
I 8	E69779	I	90839	8	90866
J †	E69788	J	90840	†	90885
K (E69789	K	90841	(90880
L)	E69790	L	90842)	90881
M .	E69799	M	90843	.	90888
N ,	E69798	N	90844	,	90889
O 9	E69780	O	90845	9	90867
P ∅	E69781	P	90846	∅	E66363
Q 1	E69772	Q	90847	1	90859
R 4	E69775	R	90848	4	90862
S BELL	E69783	S	90849	BLANK	90858
T 5	E69776	T	90850	5	90863
U 7	E69778	U	90851	7	90865
V ;	E69796	V	90852	;	90887
W 2	E69773	W	90853	2	90860
X /	E69794	X	90854	/	90882
Y €	E69777	Y	90855	€	90864
Z "	E69793	Z	90856	"	90884
FIGS	E69792	—	—	—	—
LTRS	E69800	—	—	—	—
LINE FEED	E69801	—	—	—	—
CAR RET	E69791	—	—	—	—
BLANK	E69802	—	—	—	—

ONLY PARTS SHOWN HEREIN WITHOUT THE LETTER "E" PREFIX MAY BE ORDERED AS SERVICE ITEMS.
PART NUMBERS PREFIXED WITH LETTER "E" ARE SHOWN FOR REFERENCE PURPOSES ONLY.

NUMERICAL INDEX

M-207	Magnet Coil - 92 Ohms,4	3595	Nut (1/4-32 Hex.),3	71681	Ribbon Spool - Empty,8
33-58	Screw (6-32 x 7/16),10	3598	Nut (6-40 Hex.),1,2,3,4,6, 7,9,10,11,12,13	71697	Clamping Plate,4
33-82	Screw (10-32 x 1/2),15	3599	Nut (4-40 Hex.),2,4,5,6,9, 10,11,18	72513	Driving Disc,3
33-86	Screw (4-40 x 1/8),12	3603	Nut (1/4-32 Hex.),3	72514	Spring,3
33-101	Screw (6-32 Fl. Hd.),15	3606	Nut (6-40 Hex.),1,4,6,7,15	72515	Nut (5/16-32 Hex.),3
33-110	Screw (4-40 x 3/16),1,8,12	3640	Lock Washer,1,3,4,5,9,10, 11,12,13,14,17,18	72516	Retaining Disc,3
33-132	Screw (4-40 Shoulder),8	3646	Lock Washer,9,14	72517	Nut (5-16 x 32 Keyed - Hex.),3
33-202	Screw (10-32 x 1-1/4 Rd. Hd.),20	3870	Spring,10	72521	Oil Wick - Felt,2,3
33-253	Screw (10-32 x 7/8),20	4423	Shim,8	72563	Oil Ring - Felt,3
33-341	Screw (6-32 x 9/16),16,17	4603	Spring,15	73175	Washer,20
33-349	Screw (4-40 Shoulder),18	4703	Spring,9,10	73180	Switch - Toggle (with 91683 Nut - Hex., and 93095 Nut - Ring),16
34-4	Nut (10-32 Hex.),1,6,9,10, 13,15	4704	Spring,9	73894	Screw (6-40 Set),2
34-11	Nut (2-56 Hex.),1,13	4708	Spring,4,7	74032	Disc - Small,1,9
34-19	Nut (8-32 Hex.),17	4809	oil Wick - Felt,6	74033	Washer - Leather,1,9
34-56	Nut (4-40 Hex.),4,11,13	4814	Lock Washer,1,9	74334	Washer,6
35-8	Spring,6,7,12	5475	Nut (3/16-40 Hex.),4	74399	Screw (6-40 Pilot),4
35-26	Spring,17	5566	Spacer,9	74536	Screw (6-40 x 5/32 Set),11
35-42	Spring,5	6685	Sword,4	74547	Collar,2
35-68	Spring,6,13	6689	Separator Plate,4	74722	Washer,4,8
35-69	Spring,1	6745	Screw (10-32 x 1/2),2,6,9	74879	Spring Post,9
35-70	Spring,9,10,12	6746	Screw (6-40 x 5/16),2,4,9, 11,14	74952	Screw (4-40 x 5/8),5,10
103-27	Washer,1,2,3,10,11,13	6799	Screw (6-40 Shoulder),4	74961	Spring,7
123-244	Washer,4,7	6801	Screw (4-40 Pilot),4	74986	Screw (6-40 x 13/32),6,11
200-1348	Washer,10,11	6807	Screw (6-40 x 3/16 Set),8, 14	75607	Washer,13
1010	Screw (6-40 Shoulder),8	6811	Screw (6-40 x 5/8),4	75750	Washer - Bakelite,14
1026	Screw (6-40 x 3/8),2,7,8,9,10	6835	Washer,13	76011	Code Disc No. 1,2
1028	Screw (4-40 x 1/4),10,11	6861	Washer - Felt,3	76012	Code Disc No. 2,2
1029	Screw (6-40 x 27/64),9	6863	Cam Sleeve Disc,3	76013	Code Disc No. 3,2
1030	Screw (6-40 Shoulder),4	6909	Stop Lever,4	76014	Code Disc No. 4,2
1038	Screw (6-40 x 9/32),2,14	6966	Eccentric Stop,4	76015	Code Disc No. 5,2
1039	Screw (6-40 Shoulder),9	7001	Washer,2,4,9	76016	Bushing,2
1046	Screw (6-40 Shoulder),15	7002	Washer,1,2,4,6,7,8,9,10, 11,12,15,17	76084	Washer - Felt,2
1051	Screw (4-40 x 1/2),10,13	7007	Trip Plunger,4	76085	Friction Disc,2
1073	Screw (6-40 Thumb),4	7389	Clutch - Driving,3	76087	Friction Spring,2
1121	Screw (10-32 x 3/8),9	7391	Clutch - Driven,3	76303	Shim,2
1159	Screw (4-40 x 3/8),6,10,11,13	7407	Spacer,2	76379	Spring - Lift Slide,6
1160	Screw (6-40 x 5/16),3	7599	Spring,10,11	76806	Spring,11
1162	Screw (4-40 x 1/4),3,9,12,13, 14,17	7602	Spring,4	78163	Post,4
1164	Screw (2-56 x 3/16),1,12	7603	Spring,2,4	78164	Selector Post,4
1166	Screw (4-36 x 1/4),11	7607	Collar,4	78205	Resistor - 300 Ohms,14
1168	Screw (4-40 x 5/16),5	7612	Spring,1	78301	Screw (10-32 x 5/8),9
1174	Screw (4-40 Shoulder),18	7614	Spring,4	78596	Washer,4
1176	Screw (6-40 x 3/16),2,5,10, 12,13	7655	Spring,5	78597	Screw (10-32 Shoulder),4
1179	Screw (6-40 x 5/8),1,3,9,13	7835	Ribbon Spool (with Black Ribbon),8	78723	Eccentric,9
1181	Screw (6-40 x 11/16),2	7965	Spring,3	80294	Post,9
1196	Screw (6-40 Shoulder),7	8157	Selector Lever - Right,4	80342	Screw (6-40 x 23/64),9,10,13
1200	Screw (6-40 x 9/32),11	8330	Washer,6,10	80444	Screw (6-40 x 1/4),4,10,11
1208	Screw (10-32 x 5/8),2,9,13	8334	Washer,7	80612	Nut (8-32 Hex.),9
1223	Screw (10-32 x 1/2),6	8543	Screw (6-40 x 1/4),1,2,8	80625	Resistor - 30 Ohms,14
1226	Screw (6-40 x 3/4),1,7,13	8896	Shim,2,9	80721	Washer,4
1245	Screw (10-32 x 1),9	21397	Washer,6	80854	Screw (6-40 x 1-7/16),5
1262	Screw (6-32 x 5/16),13,15,16, 17,18	34432	Washer,4,9,10	80985	Screw (4-40 x 1/4),12
1266	Screw (6-32 x 7/16),15,17,19	34464	Spring,9	81895	Spring Post,8
1269	Screw (6-40 x 1/2),6,11	35826	Washer,15	82440	Screw (6-40 x 7/16),4
1297	Screw (6-40 x 2-7/16),14	35858	Bell,9	82444	Bushing - Bakelite,10
1303	Screw (6-40 x 13/32),2,13	36463	Spring,11	82542	Contact Spring,10
2191	Lock Washer,1,18	41732	Clamp Plate,10	82544	Contact Spring,10
2201	Nut (5/16-32 Hex.),1,9	41974	Spring,10	82547	Insulator,10
2337	Oil Wick - Felt,13	44048	Washer,14	82548	Insulator,10
2382	Lock Washer,15	45814	Screw (8-40 Shoulder),1	82555	Contact Spring,10
2403	Pin,13	45815	Lock Washer,20	82557	Stiffener,10
2415	Spring,13	45842	Screw (12-24 x 1/2),14	83330	Washer,2
2438	Washer,10	47024	Washer,11	83885	Nut (6-32 Hex.),15,16,17,18
2526	Spacer,13	49056	Screw (10-32 x 7/8),3	84990	Screw (6-40 x 1/4),2
2539	Nut (3/8-32 Hex.),13	49420	Spring,1,5,6,10,13	85595	Nut (3/8-16 Hex.),20
2610	Bell,9	55090	Spring - Key Lever,12	85957	Washer,6
2669	Lock Washer,1,2,3,4,6,9,10, 13,14	55292	Screw (10-32 x 7/16),15	85970	Spring Washer,15
2836	Spring,11	55669	Spring,6,8	86710	Oiler,3
3339	Nut (9/16-32 Hex.),2	70886	Washer,3	86742	Nut (4-40 Hex.),2
3369	Ball,11	71073	Washer,4,12,13	88012	Spring Post,10
3438	Washer,9,14			89407	Clip,15

ONLY PARTS SHOWN HEREIN WITHOUT THE LETTER "E" PREFIX MAY BE ORDERED AS SERVICE ITEMS.
PART NUMBERS PREFIXED WITH LETTER "E" ARE SHOWN FOR REFERENCE PURPOSES ONLY.

NUMERICAL INDEX

E44719	Sleeve, 5	E66348	Space Bar, 12	E66738	Bushing, 10
E47086	Roller, 6	E66349	Clamp Disc, 12	E66739	Latch, 10
E47155	Roller, 1, 6, 7	E66350	Key Lever - Upper, 12	E66740	Bracket, 10
E47156	Stud, 6	E66351	Key Lever - Center, 12	E66741	Armature, 10
E47157	Roller, 6	E66352	Key Lever - Lower, 12	E66743	Spring Hanger, 5
E47158	Stud, 6	E66353	Space Key Lever, 12	E66748	Contact Spring, 10
E48126	Bracket, 7	E66357	Contact Lever, 13	E66756	Spring Terminal, 10
E48201	Roller, 6	E66358	Locking Lever, 13	E66770	Adjusting Button, 3
E48982	Shift Latch Lever, 5	E66359	Lock Loop, 13	E66775	Post, 10
E48983	Button, 5	E66360	Screw (6-40 x 15/64 Eccentric), 2	E66823	Bell Function Pawl, 6
E48984	Nut (2-56 Special), 5		Type Pallet (Ø), 21	E66830	Paper Roll Spindle (with Detent Spring), 18
E48985	Figs. - Ltrs. Latch, 5	E66363	Clamp Plate, 13	E66837	Eccentric, 10
E49012	Shaft, 6	E66374	Bushing - Bakelite, 13	E66857	Print Hammer Guide, 8
E49039	Screw (6-40 x 11/16 Special), 1, 9	E66375	Insulator, 13	E66858	Mounting Plate, 8
E49055	Retaining Plate, 2	E66376	Contact Spring - Group, 13	E66867	Bracket - Left, 15
E49056	Type Wheel Hub, 2	E66377	Contact Spring - Single, 13	E66887	Screw (6-40 Shoulder), 2
E49058	Shelf, 2	E66378	Insulator, 13	E66889	Oil Ring - Felt, 1, 7, 9, 10
E49060	Shift Slide, 6	E66379	Contact Spring - Group, 13	E66894	Bell Function Arm, 10
E49061	Ribbon Shield, 2	E66380	Contact Spring - Single, 13	E66898	Selector Plate, 4
E49071	Clamp, 2	E66381	Stiffener - Group, 13	E66899	Plate - with Hub, 10
E49178	Function Lever Plate, 10	E66382	Stiffener - Single, 13	E66947	Guide, 1
E49179	Bushing, 10	E66383	Insulator, 13	E67104	Bushing, 1, 7
E49619	Guide Plate, 1	E66384	Keyboard Panel - Olive Drab Wrinkle), 12	E67105	Spacing Shaft (with Gear), 9
E56862	Latch Pawl, 13	E66385	Bracket - Right, 12	E67106	Clutch Drive Arm, 2
E63137	Space Cam Follower Arm, 6	E66386	Bracket - Left, 12	E67108	Latch Guide Arm, 2
E65960	Transfer Lever, 4	E66387	Bushing, 13	E67109	Latch, 2
E65961	Code Disc Lever, 2	E66403	Ratchet, 13	E67112	Screw (6-40 x 19/64), 1
E66023	Separator, 2	E66404	Stud, 13	E67113	Bushing, 1
E66024	Plate, 2	E66405	Spacer, 13	E67115	Clutch Throwout Lever, 3
E66034	Function Code Bar No. 1, 5	E66407	Bracket, 3	E67126	Line Feed Bail, 9
E66035	Function Code Bar No. 2, 5	E66410	Stop Pawl Plate, 4	E67140	Screw (10-32 x 11/32), 1
E66036	Function Code Bar No. 3, 5	E66425	Bushing, 3	E67174	Bearing - Lower, 9
E66037	Function Code Bar No. 4, 5	E66432	Guide - Rear, 12	E67182	Hook, 15
E66038	Function Code Bar No. 5, 5	E66438	Clutch Release, 13	E67183	Stud, 12
E66148	Shift Lever, 7	E66441	Pawl, 13	E67185	Bracket, 15
E66158	Bushing, 6	E66442	Bushing, 13	E67191	Terminal Block, 17
E66162	Stop, 11	E66443	Clutch Release Arm, 13	E67194	Catch, 15
E66179	Screw (4-40 Shoulder), 2	E66444	Guide - Left End, 12	E67196	Hook - Right, 15
E66181	Release Lever, 7	E66462	Guide - Right End, 12	E67197	Hook - Left, 15
E66182	Cam Follower, 7	E66463	Drive Pawl (with Post), 13	E67199	Guide, 13
E66184	Transfer Lever, 7	E66554	Stud, 1	E67200	Rail - Upper, 9
E66185	Stud, 7	E66559	Code Bar Bracket, 5	E67220	Index Pin, 2
E66186	Spring Post, 7	E66561	Washer, 5	E67237	Glass, 15
E66187	Screw (6-40 Shoulder), 7	E66562	Washer, 2	E67243	Name Plate, 17
E66202	Guide, 4	E66563	Spacer, 2	E67244	Mounting Plate, 17
E66221	Roller, 2	E66564	Screw (4-40 x 5/8), 2	E67250	Stop Arm, 12
E66229	Hub, 3	E66589	Shaft, 2	E67251	Tension Spring, 18
E66230	Lift Slide Arm, 6	E66593	Pawl, 2	E67255	Paper Roll Drag Spring, 18
E66231	Gear - 21T, 3	E66597	Clutch Sleeve, 2	E67260	Mounting Plate, 15
E66232	Gear - 24T, 13	E66674	Pinion - 6T, 14	E67261	Bearing Bracket, 9
E66240	Selector Bar No. 1, 12	E66676	Gear - 36T, 2	E67280	Motor Plate, 14
E66241	Selector Bar No. 2, 12	E66679	Stud, 6	E67289	Clamp, 7
E66242	Selector Bar No. 3, 12	E66680	Shaft, 5	E67298	Clamp, 7
E66243	Selector Bar No. 4, 12	E66681	Bearing, 5	E67302	Stud, 6
E66244	Selector Bar No. 5, 12	E66692	Screw (6-40 Shoulder), 7	E67303	Retainer, 1, 6, 7
E66245	Universal Bar, 12	E66697	Stud, 2	E67319	Paper Roll Frame, 18
E66246	Lift Slide Lever, 6	E66704	Carriage Return Pawl, 9	E67328	Mounting Plate, 17
E66250	Bushing, 6	E66705	Space Pawl, 6	E67329	Bracket, 9
E66253	Disc - Large, 1, 9	E66706	Inset, 6	E67330	Clamp Plate, 15
E66254	Dashpot, 1, 9	E66708	Bushing, 10	E67331	Pad - Rubber, 15
E66260	Shaft, 1, 9	E66709	Eccentric Bushing, 10	E67332	Spacer - Short, 5
E66266	Spring Bar, 12	E66710	Lever - with Hub, 10	E67337	Shaft, 15
E66267	Clamp, 12	E66712	Stud, 10	E67356	Copyholder Rod, 16
E66268	Lever, 9	E66713	Carriage Return Latch, 6	E67361	Mounting Strip, 16
E66269	Bushing, 9	E66715	Line Feed Function Bar, 5	E67363	Condenser Bracket, 17
E66270	Stud, 1, 6, 7	E66716	Bell Function Bar, 5	E67411	Clamp, 12
E66276	Shaft, 12	E66717	Motor Stop Function Bar, 5	E67412	Shaft, 12
E66287	Print Cam Follower, 1	E66718	Function Bar, 5	E67429	Screw (12-24 x 1/2), 1
E66291	Print Lever, 1	E66719	Function Bar, 5	E67456	Guide Plate, 13
E66298	Oil Wick - Felt, 2	E66720	C. R. Function Bar, 5	E67457	Space Rod, 13
E66302	Code Disc Sleeve, 2	E66722	Spring Post, 6	E67458	Collar, 13
E66303	Bracket, 2	E66723	Strap, 6	E67513	Spring Post, 11
E66315	Guide - Front, 12	E66730	Function Pawl Latch, 10	E67514	Spacer - Long, 5
E66330	Shaft, 13	E66731	Bracket, 10	E67526	Latch, 11
E66331	Shaft, 13	E66734	Spacer, 10	E67556	Bracket, 13
E66342	Post, 12	E66735	Spacer, 10	E67751	Clamp Plate, 5
E66343	Roller, 12	E66736	Separator, 10	E67797	Knob, 11
E66344	Bearing, 12	E66737	Plate, 10	E67804	Platen Shaft, 11
E66347	Space Bar Yoke, 12			E67809	Seal - Rubber, 15

ONLY PARTS SHOWN HEREIN WITHOUT THE LETTER "E" PREFIX MAY BE ORDERED AS SERVICE ITEMS.
PART NUMBERS PREFIXED WITH LETTER "E" ARE SHOWN FOR REFERENCE PURPOSES ONLY.

NUMERICAL INDEX

E67816	Spring Plate, 6	E68610	Knob, 15	E69772	Keypops
E67828	Spring, 15	E68616	Spacer, 2	E69773	(Q 1)
E67829	Retainer, 18	E68801	Latch, 15	E69774	(W 2)
E67830	Spacer, 18	E69026	Screw (10-24 x 3-7/8), 14	E69775	(X 3)
E67831	Stud, 18	E69154	Name Plate, 16	E69776	(R 4)
E67832	Spring Plate, 7	E69164	Name Plate, 16	E69777	(T 5)
E67833	Release Arm, 7	E69224	Name Plate, 16	E69778	(Y 6)
E67834	Nut (6-40 Special), 7	E69238	Clip, 17	E69779	(U 7)
E67835	Seal - Rubber, 15	E69246	Governor Cover (6 Spots) with 6807 Set Screws, 14	E69780	(I 8)
E67836	Clamp Plate, 15	E69250	Mounting Plate, 16	E69781	(O 9)
E67843	Space Rod Extension, 13	E69258	Strip - Bakelite, 17	E69782	(P 0)
E67844	Collar, 13	E69334	Rheostat (5000 Ohms) (with Nut and Lock Washer), 16	E69783	(A -)
E67866	Bracket - Right, 15	E69335	Switch - Lever Action (with Knob), 16	E69784	(S Bell)
E67881	Range Scale, 4	E69336	Fuse - 1 Amp., 17	E69785	(D \$)
E67899	Space Bar Loop, 12	E69337	Line Meter (with Cover Plate and Mounting Screws), 16	E69786	(F !)
E67902	Hinge - Rubber, 15	E69338	Fuse - 1/4 Amp., 17	E69787	(G &)
E67903	Bracket - Left, 15	E69340	Binding Post, 17	E69788	(H Stop)
E67904	Bracket - Right, 15	E69341	Condenser - 25 MF., 17	E69789	(J ')
E67906	Latch, 15	E69343	Resistor - 2500 Ohms, 17	E69790	(K (
E67907	Clamp Plate, 19	E69344	Fuse Holder (with Nut and Washer - Rubber), 17	E69791	(L))
E67908	Seal - Rubber, 19	E69345	Fuse Clip, 17	E69792	(Car. Ret.)
E67909	Locating Clip, 19	E69346	Socket - 15 Terminal, 17	E69793	(Figs.)
E67912	Cam Sleeve (Assem.), 13	E69347	Plug - 15 Prong, 12	E69794	(Z ")
E67929	Bolt (3/8-16 x 4), 20	E69348	Rheostat (5000 Ohms) (with Nut and Lock Washer), 16	E69795	(X /)
E67930	Screw (5/16-18 Special), 20	E69351	Break Key (with Nut), 16	E69796	(C :)
E67932	Washer, 20	E69352	Rotary Switch (with Nut and Lock Washer), 17	E69797	(V ;)
E67933	Washer, 20	E69354	Rectifier (with Wire Strap, Nuts and Washers), 16	E69798	(B ?)
E67997	Function Cam Sleeve (Assem.), 3	E69566	Screw (5/16-18 x 1/2), 1	E69799	(N ,)
E67998	Spacer - Hex., 14	E69681	"T" Link, 7	E69800	(M .)
E68208	Ring, 20	E60700	Condenser - 1 MF., 14	E69801	(Ltrs.)
E68270	Pin, 3			E69802	(Line Feed)
E68304	Shaft, 3			E69816	(Blank)
E68391	Screw (6-40 Shoulder), 7			E69827	Magnet Coil - 1075 Ohms, 10
E68480	Seal - Rubber, 15			E69932	Cable - Cover, 17
E68530	Clamp Plate, 12			E69933	Nut - Speed (6-32 Flat Type), 15, 16, 17
E68531	Clamp Plate, 12				Nut - Speed (6-32 "U" Type), 16
E68532	Clamp Plate, 12				
E68533	Strip - Rubber, 12				
E68534	Strip - Rubber, 12				