

Non Bell

2/6/64 - HWD

BULLETIN 1194B
PARTS
TELETYPE TAPE PRINTER SET
FOR
STOCK TICKER SERVICE

APPARATUS NOT USED BY
BELL SYSTEM



TELETYPE[®]
CORPORATION
5555 TOUHY AVENUE, SKOKIE, ILLINOIS

BULLETIN 1194B
PARTS
TELETYPE TAPE PRINTER SET
FOR
STOCK TICKER SERVICE

APPARATUS NOT USED BY
BELL SYSTEM



TELETYPE[®]
CORPORATION
5555 TOUHY AVENUE, SKOKIE, ILLINOIS

LIST OF EFFECTIVE PAGES

JANUARY, 1964

Page Number	Change In Effect
A and B	Original
1 to 33	Original

The above list indicates the effective pages as of issue date. Upon receipt of Change Pages, insert them numerically and discard any superseded pages.

Units Covered

Code	Description
LP112	Typing Unit
LB33	Base
LMU42	Motor Unit
LPC212	Cover

TABLE OF CONTENTS

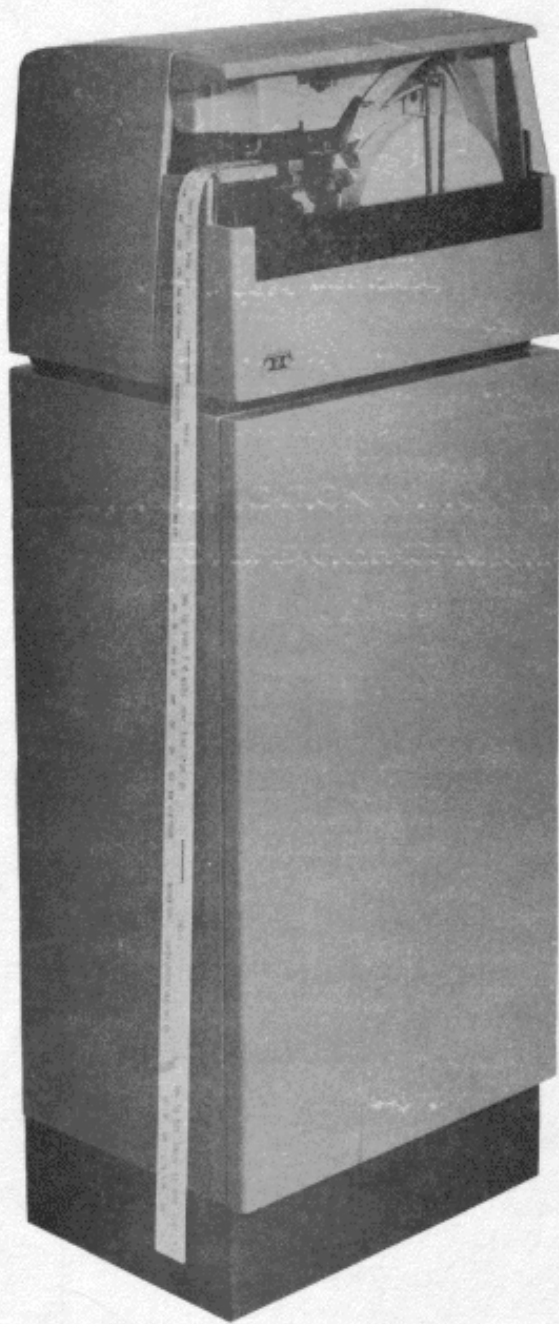
Figure Number		Page Number
1	Main Frames	2
2	Typebox Positioning Mechanism	3
3	Typebox Positioning MechanismContinued	4
4	Aggregate Motion Linkage	5
5	Typebox Clutches	6
6	Double Print Hammer Mechanism	7
7	Tape Feed Mechanism	8
8	Left Frame Mounting Parts	9
9	Right Frame Mounting Parts	10
10	Typebox and Carriage Mechanism	11
11	Rocker Shaft and Platen	12
12	Ribbon Feed Mechanism	13
13	Code Bar Selector Mechanism	14
14	Selector Mechanism	15
15	Selector Magnet Mechanism	16
16	Code Bar Mechanism	17
17	Main Shaft	18
18	Main Shaft Clutches	19
19	Base	20
20	Motor Unit	21
21	Cover	22
22	196870 Pedestal Assembly	23
23	196818 Cover Plate Assembly	24
24	196937 Tape Puller Assembly	25
25	196939 Motor Control Assembly	26
26	196938 Electrical Service Assembly	27
27	196832 Electrical Package	28
28	196826 Power Supply Assembly	29
	Numerical Index	30

NOTE:

For parts assemblies requiring a paint finish, the following colors are available:

<u>Smooth Vinyl Finish</u>	<u>Suffix</u>
Light Olive Gray	HF
Charcoal Gray	HA

Suffix to be applied following the part number. Other colors are available upon request.



ORIGINAL

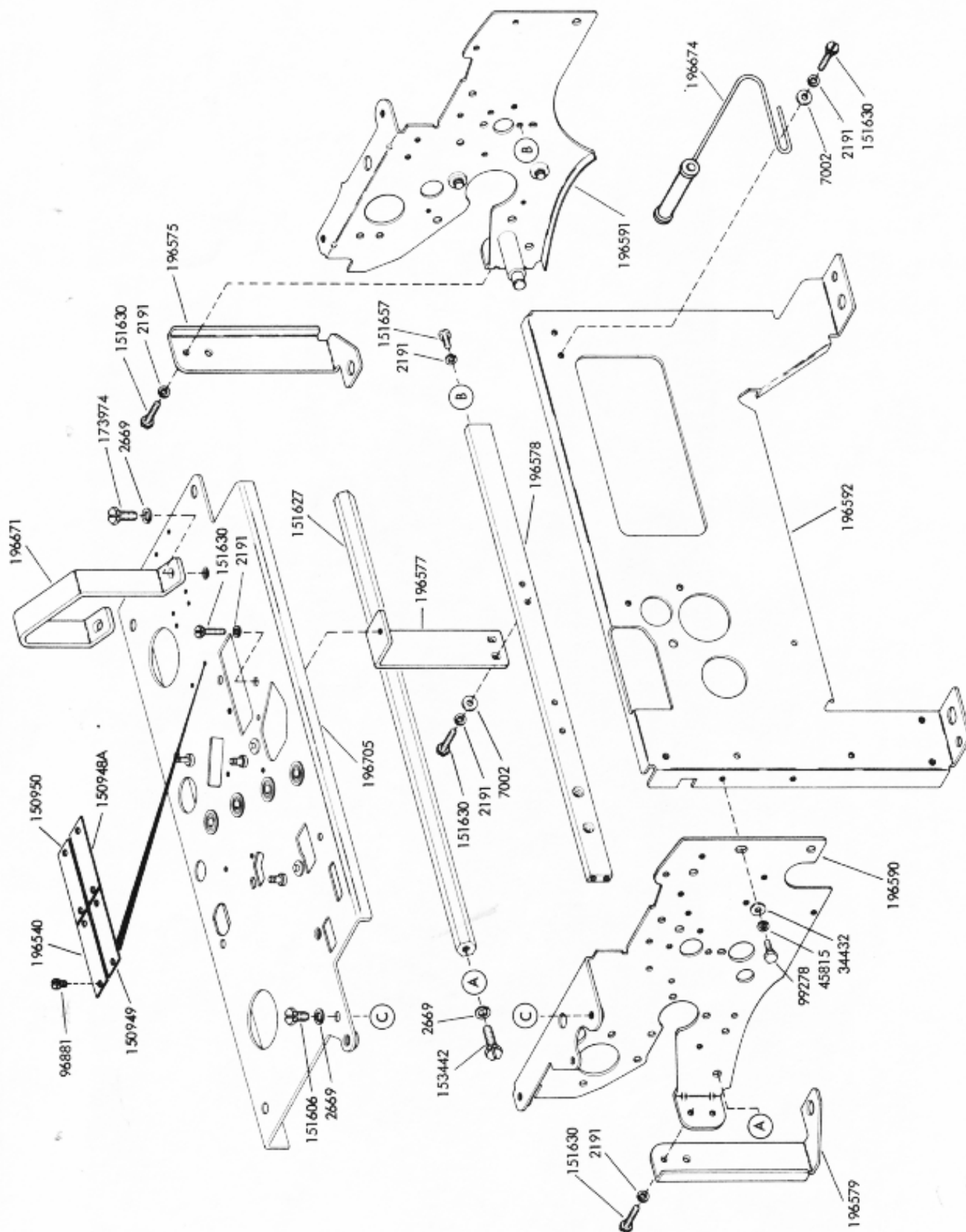


FIGURE 1. MAIN FRAMES

11948

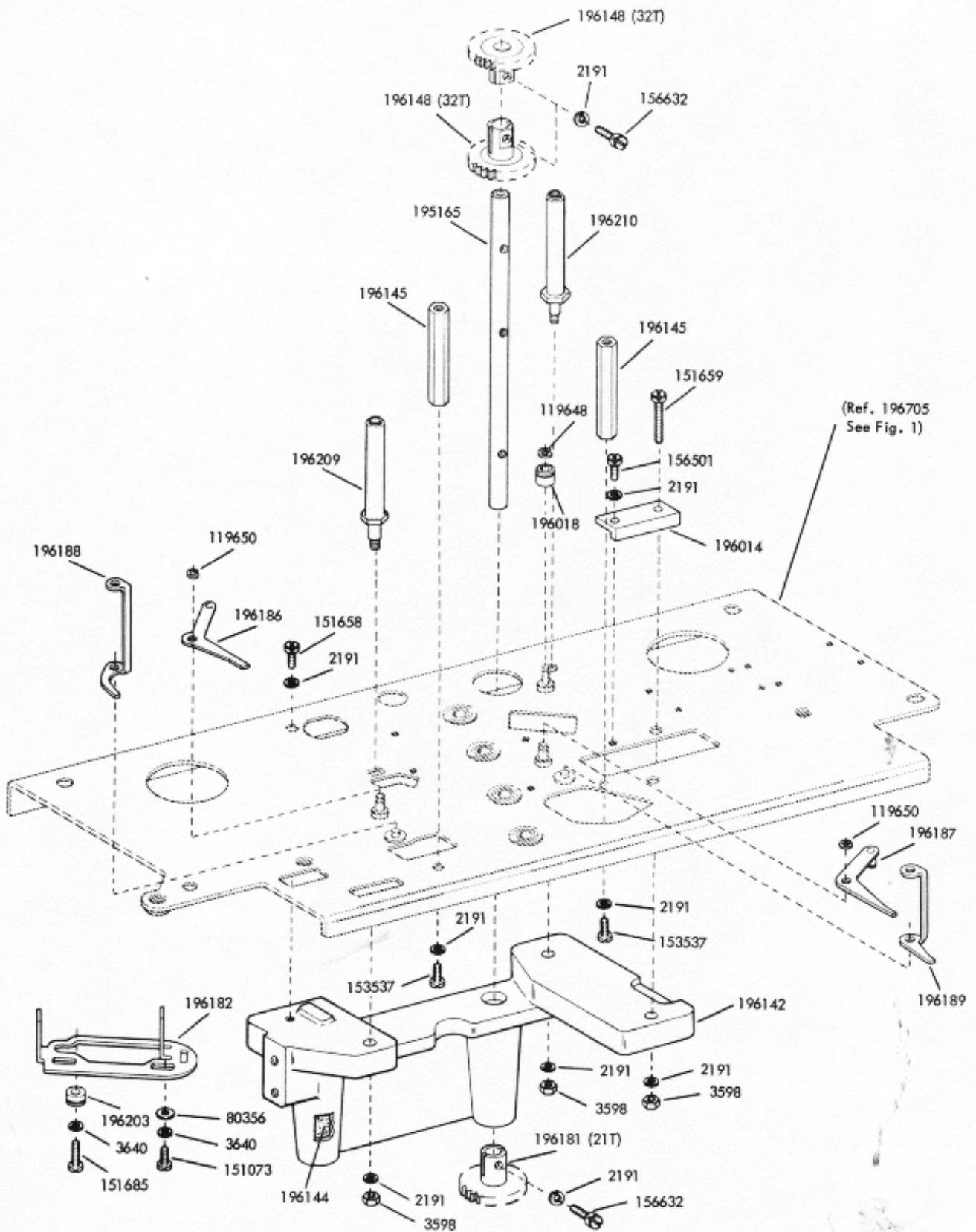


FIGURE 2. TYPEBOX POSITIONING MECHANISM

ORIGINAL

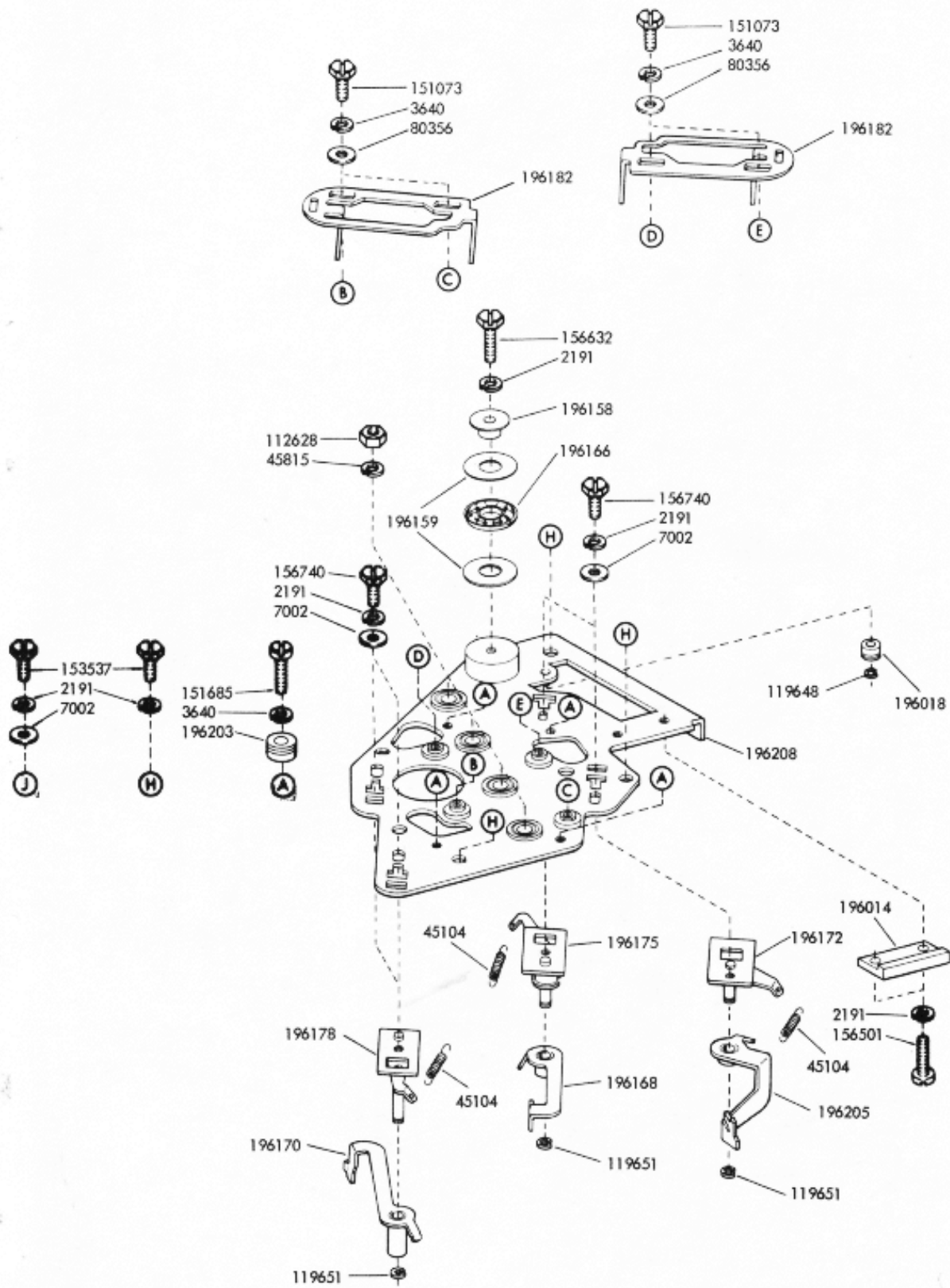


FIGURE 3. TYPEBOX POSITIONING MECHANISM Continued

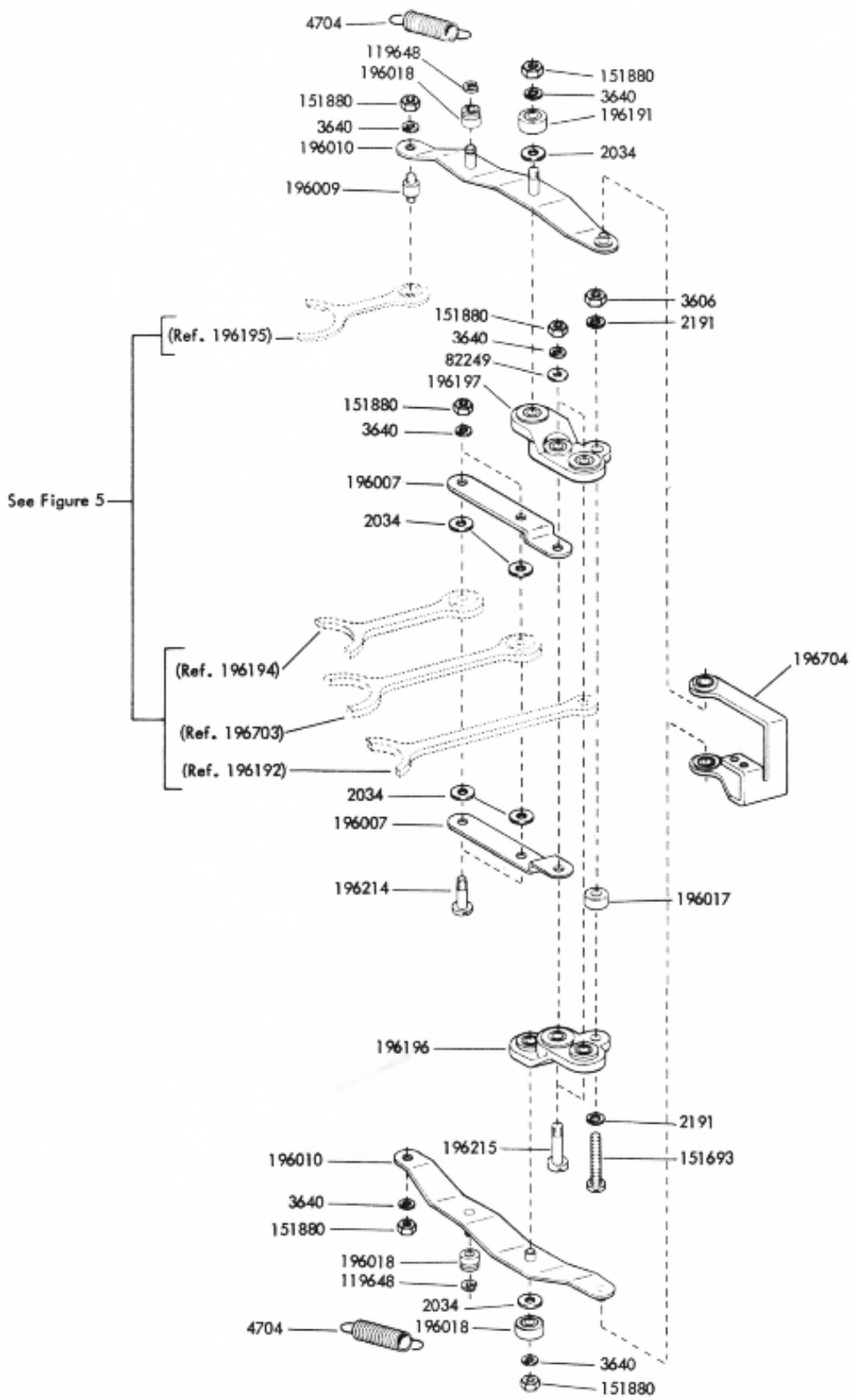


FIGURE 4. AGGREGATE MOTION LINKAGE

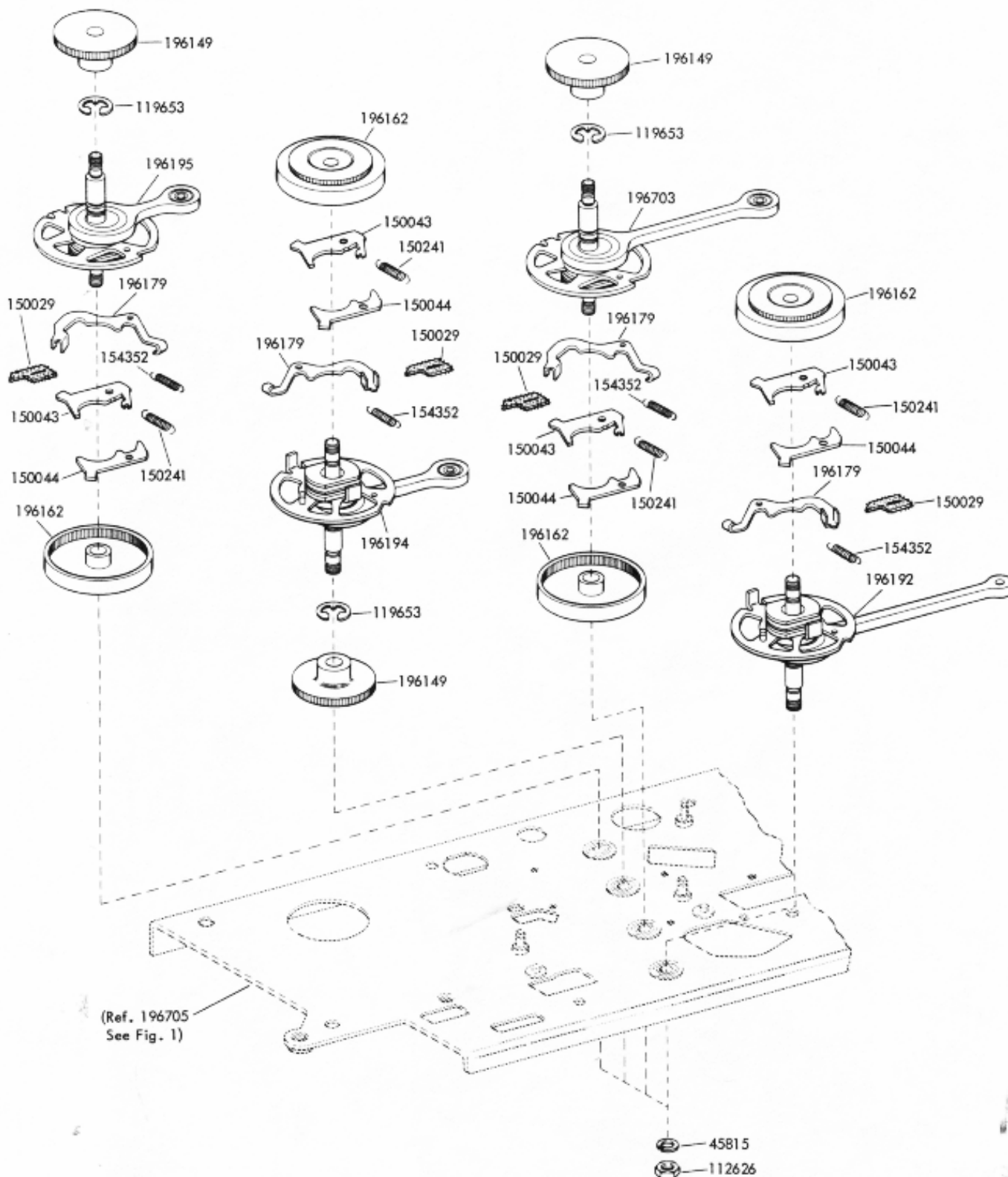


FIGURE 5. TYPEBOX CLUTCHES

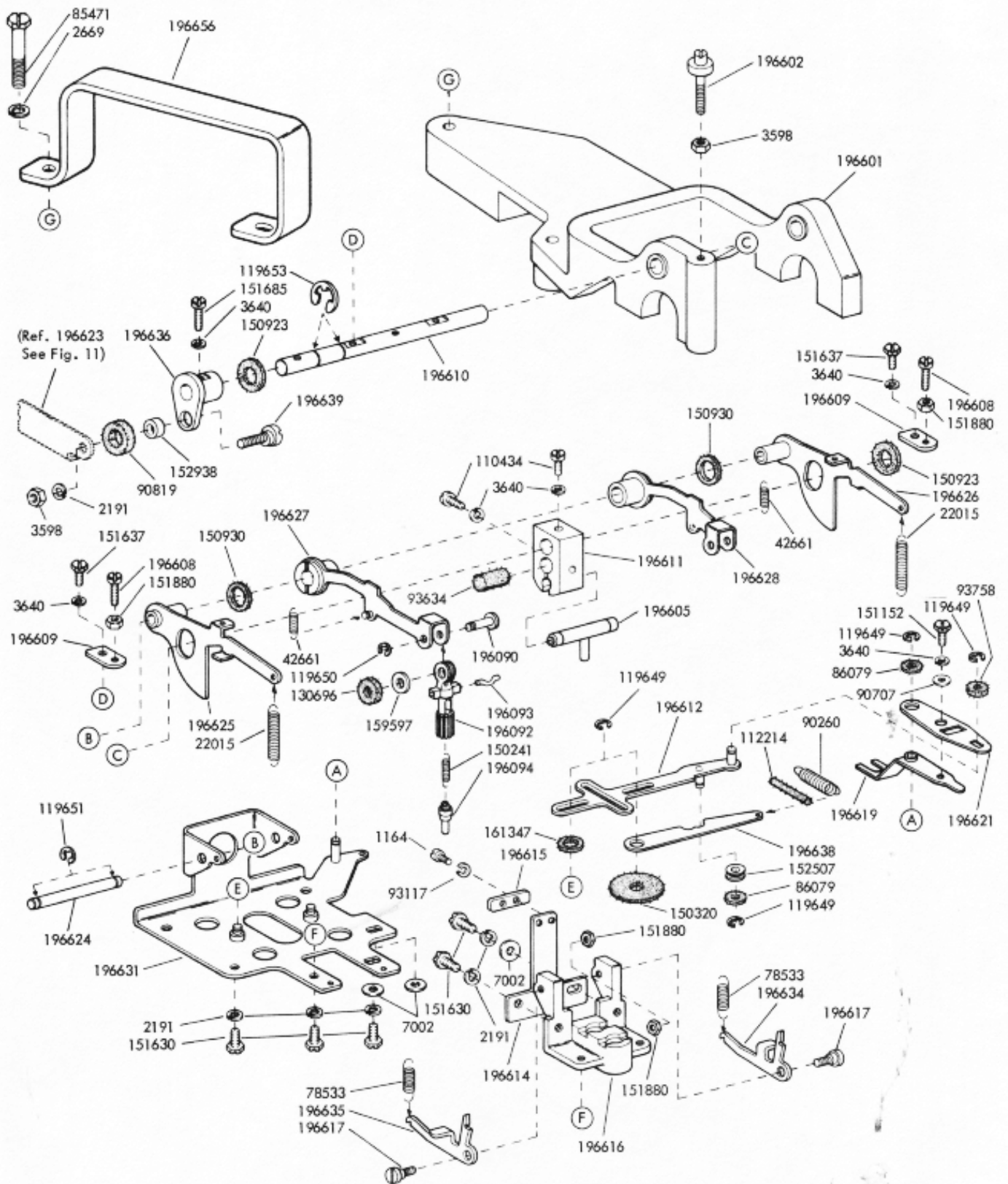


FIGURE 6. DOUBLE PRINT HAMMER MECHANISM

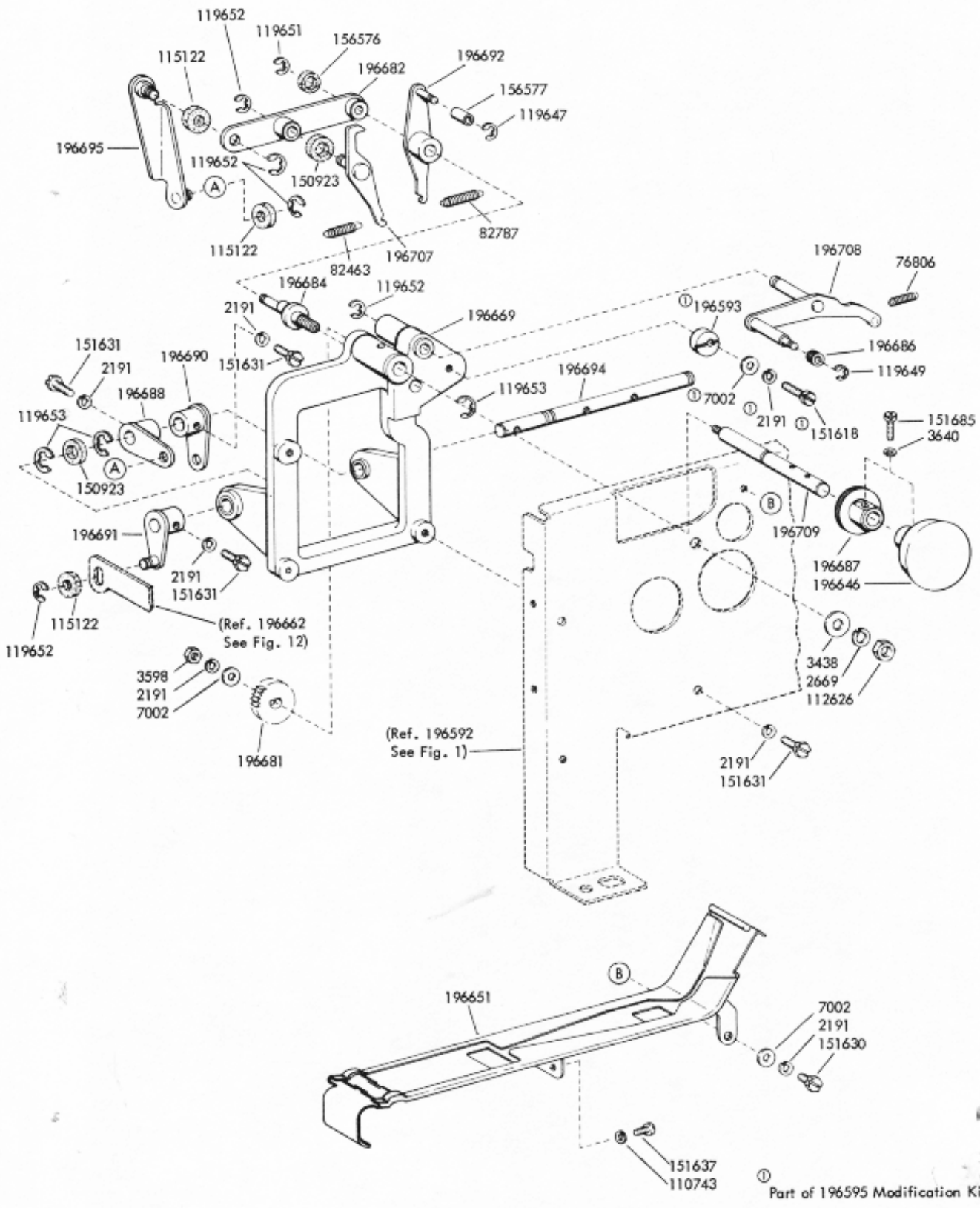


FIGURE 7. TAPE FEED MECHANISM

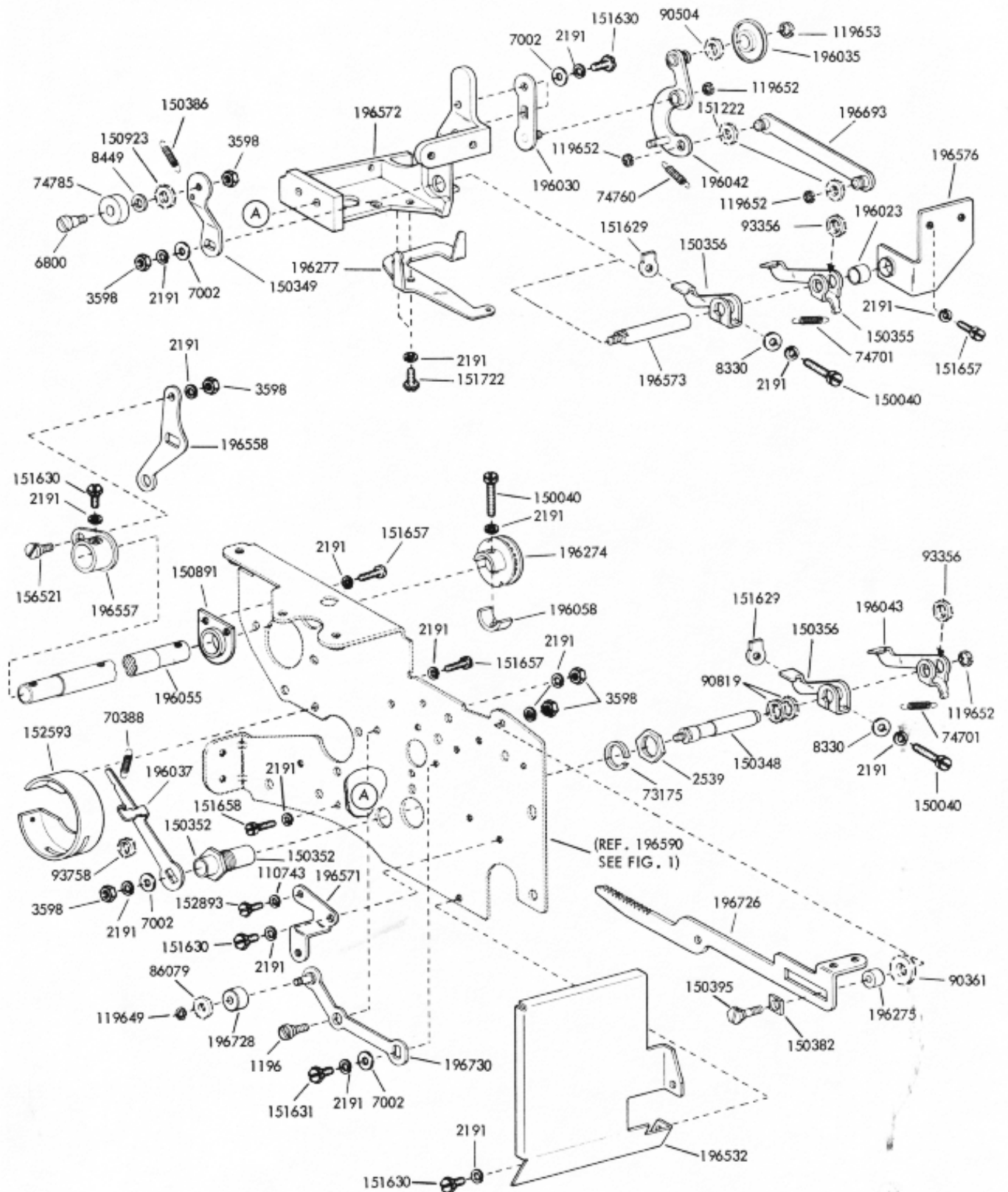


FIGURE 8. LEFT FRAME MOUNTING PARTS

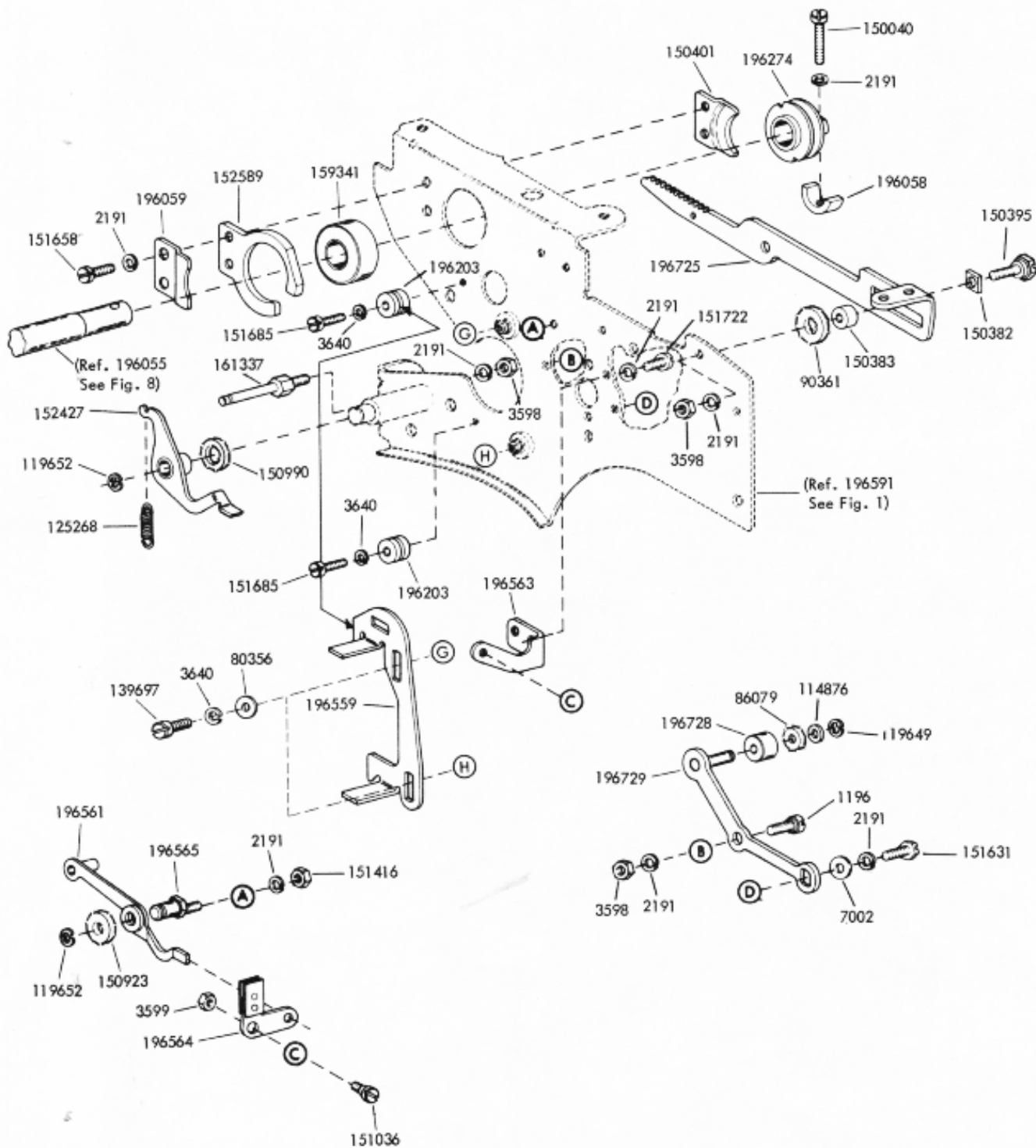


FIGURE 9. RIGHT FRAME MOUNTING PARTS

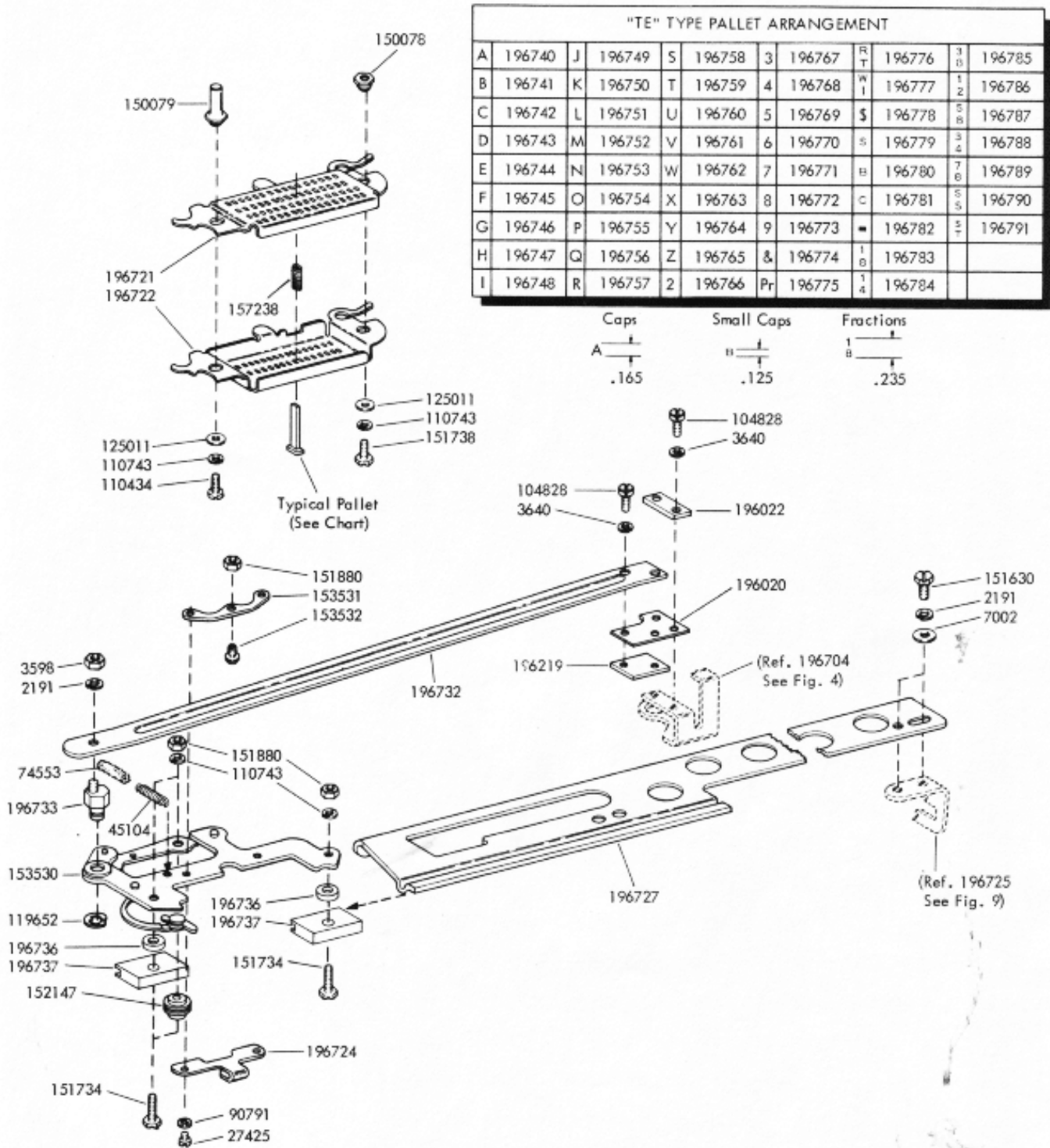


FIGURE 10. TYPEBOX AND CARRIAGE MECHANISM

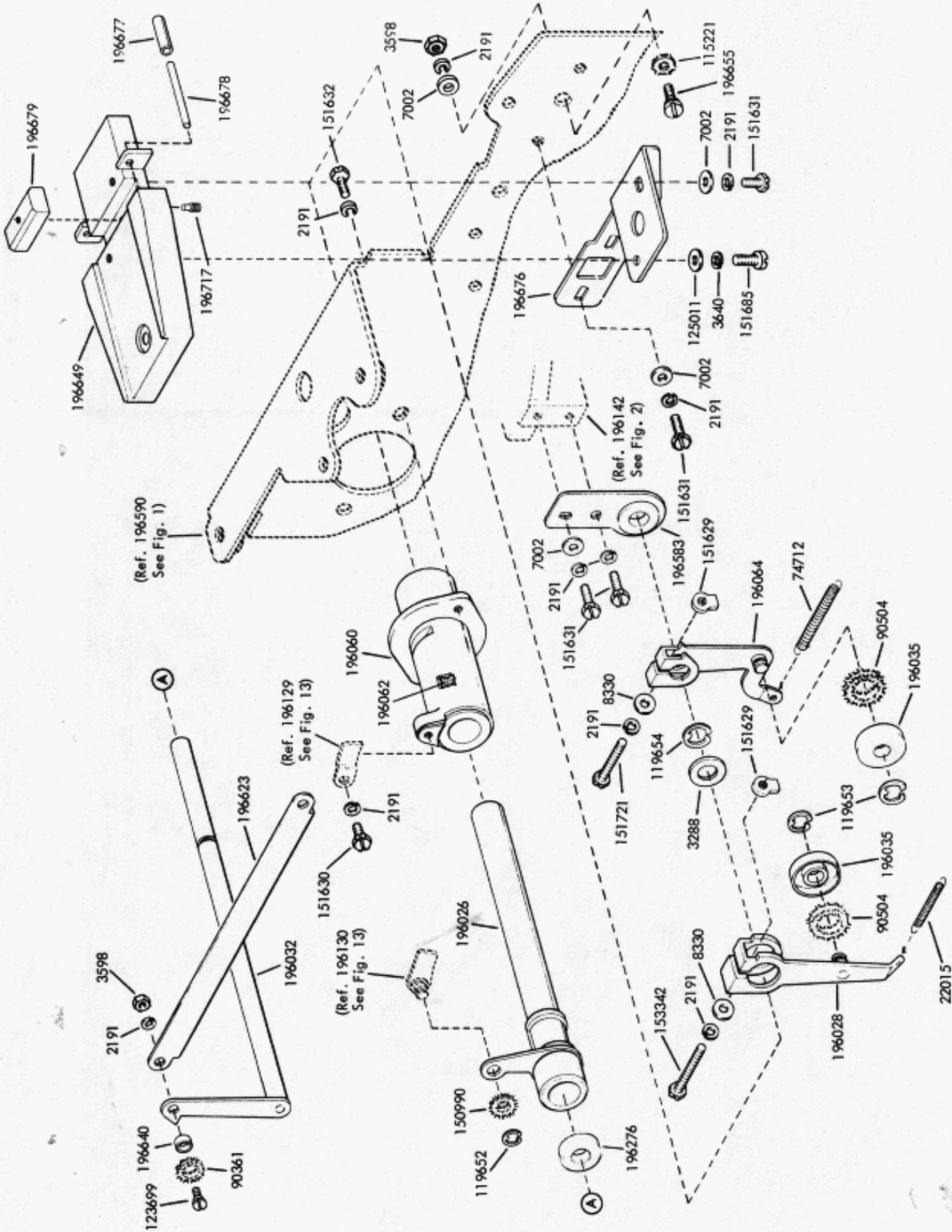


FIGURE 11. ROCKER SHAFT AND PLATEN

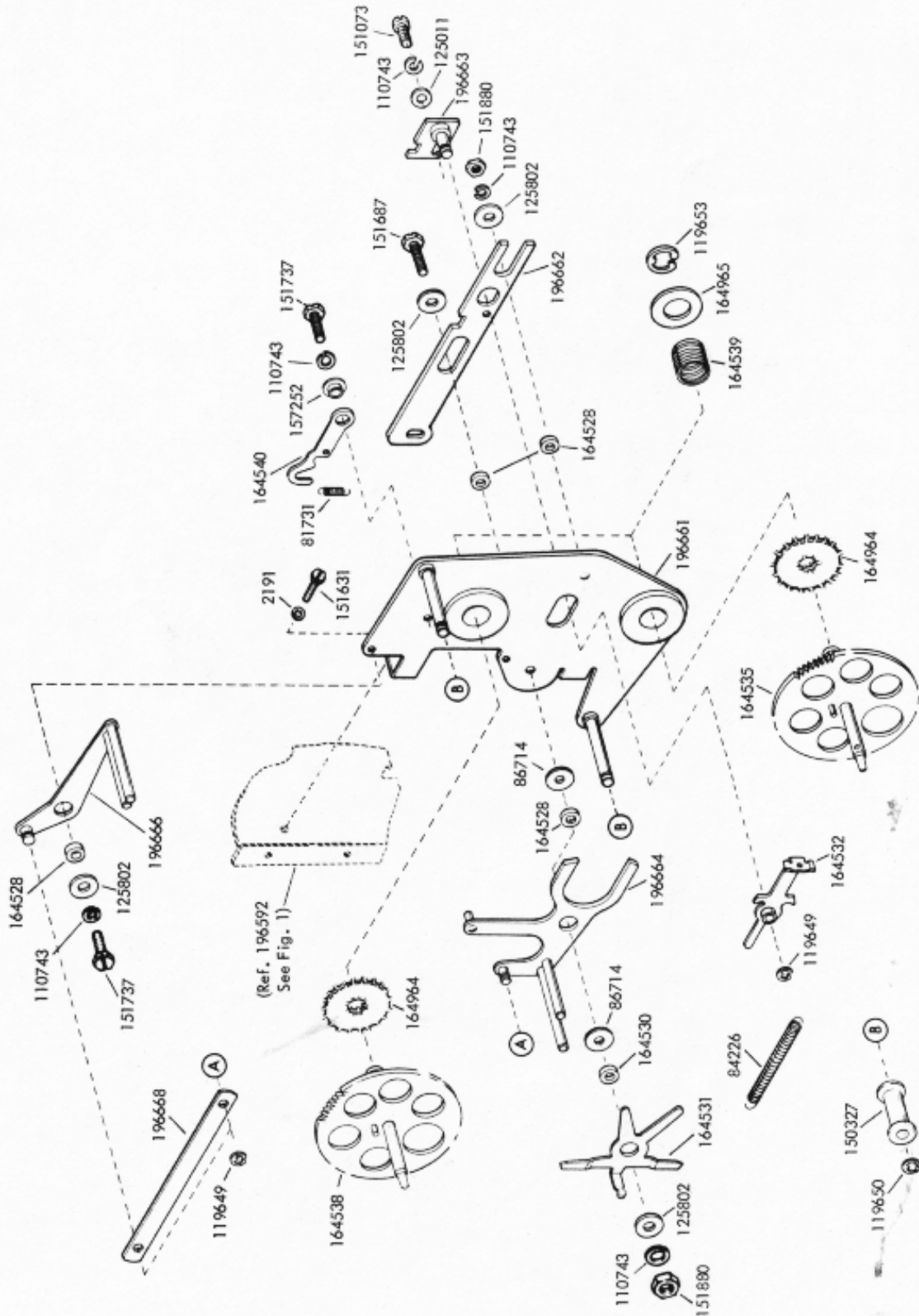


FIGURE 12. RIBBON FEED MECHANISM

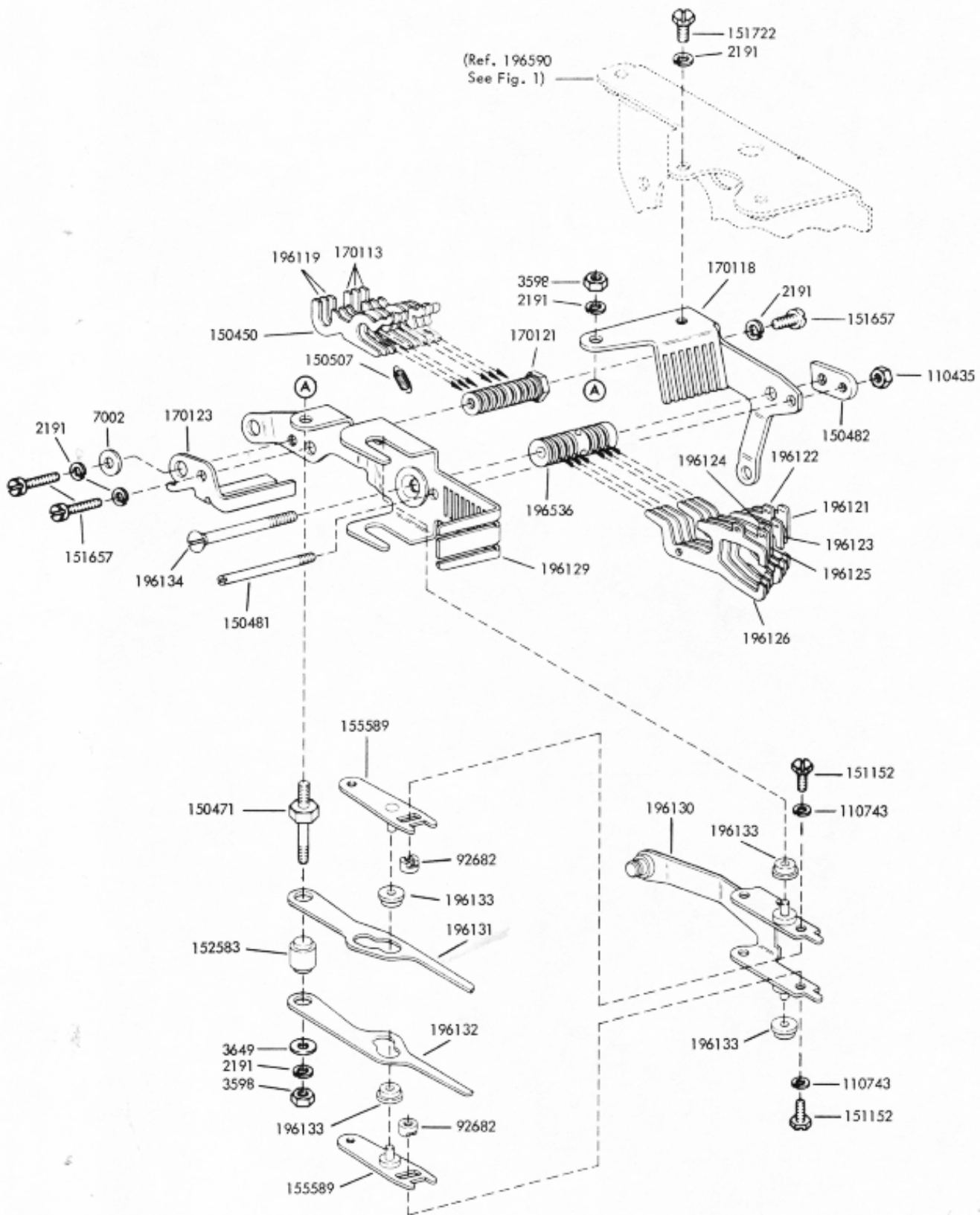


FIGURE 13. CODE BAR SELECTOR MECHANISM

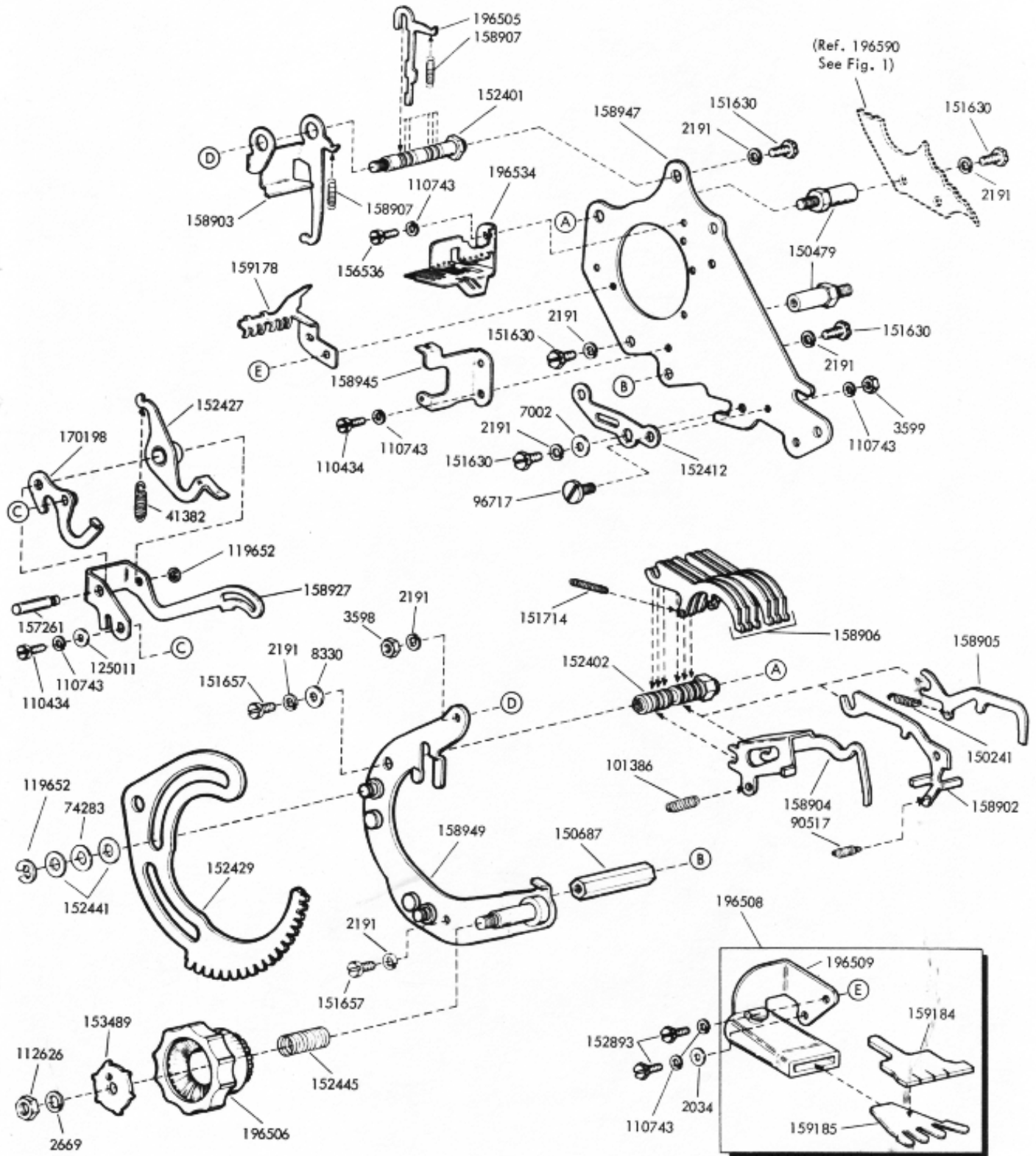


FIGURE 14. SELECTOR MECHANISM

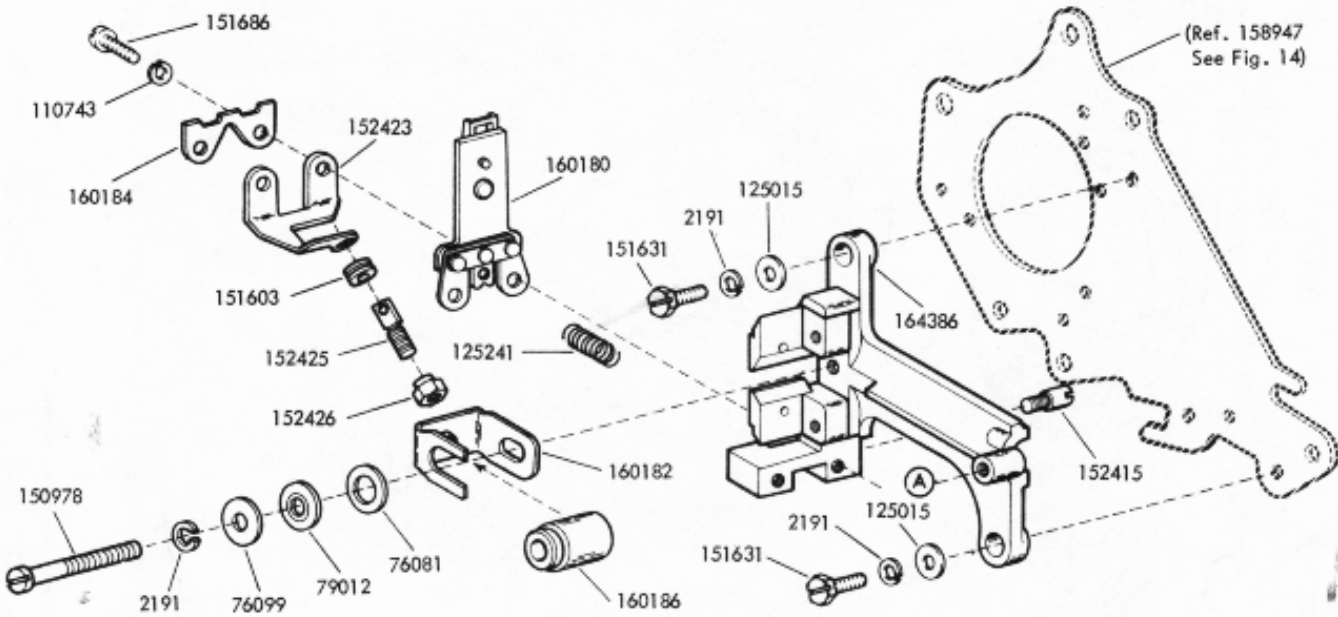
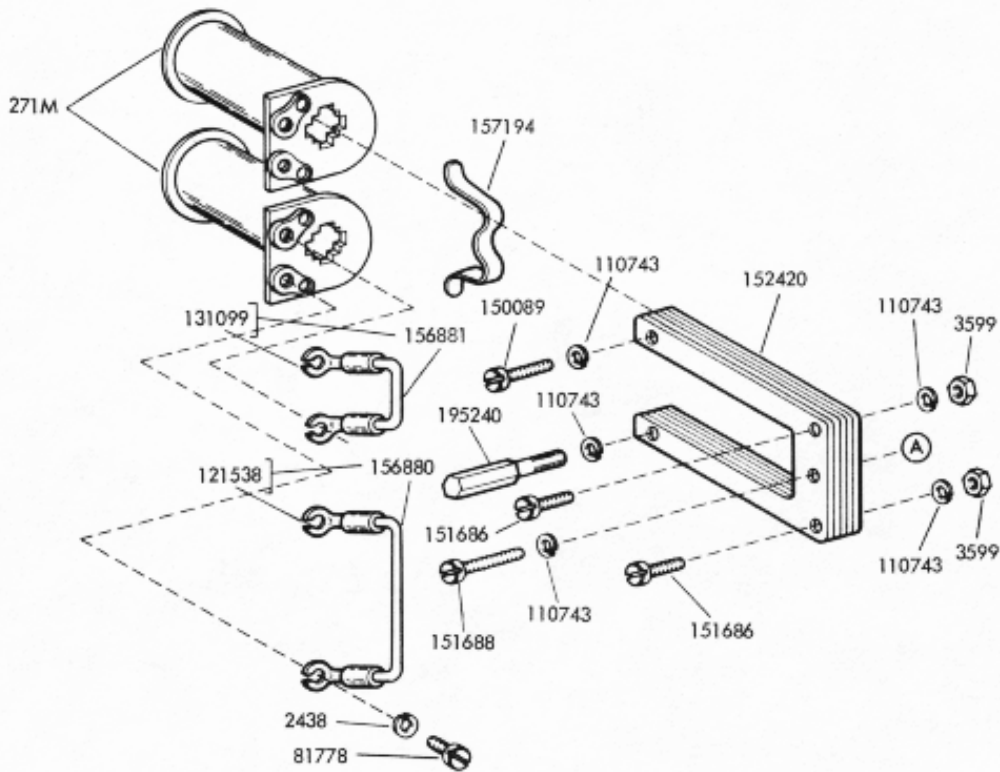


FIGURE 15. SELECTOR MAGNET MECHANISM

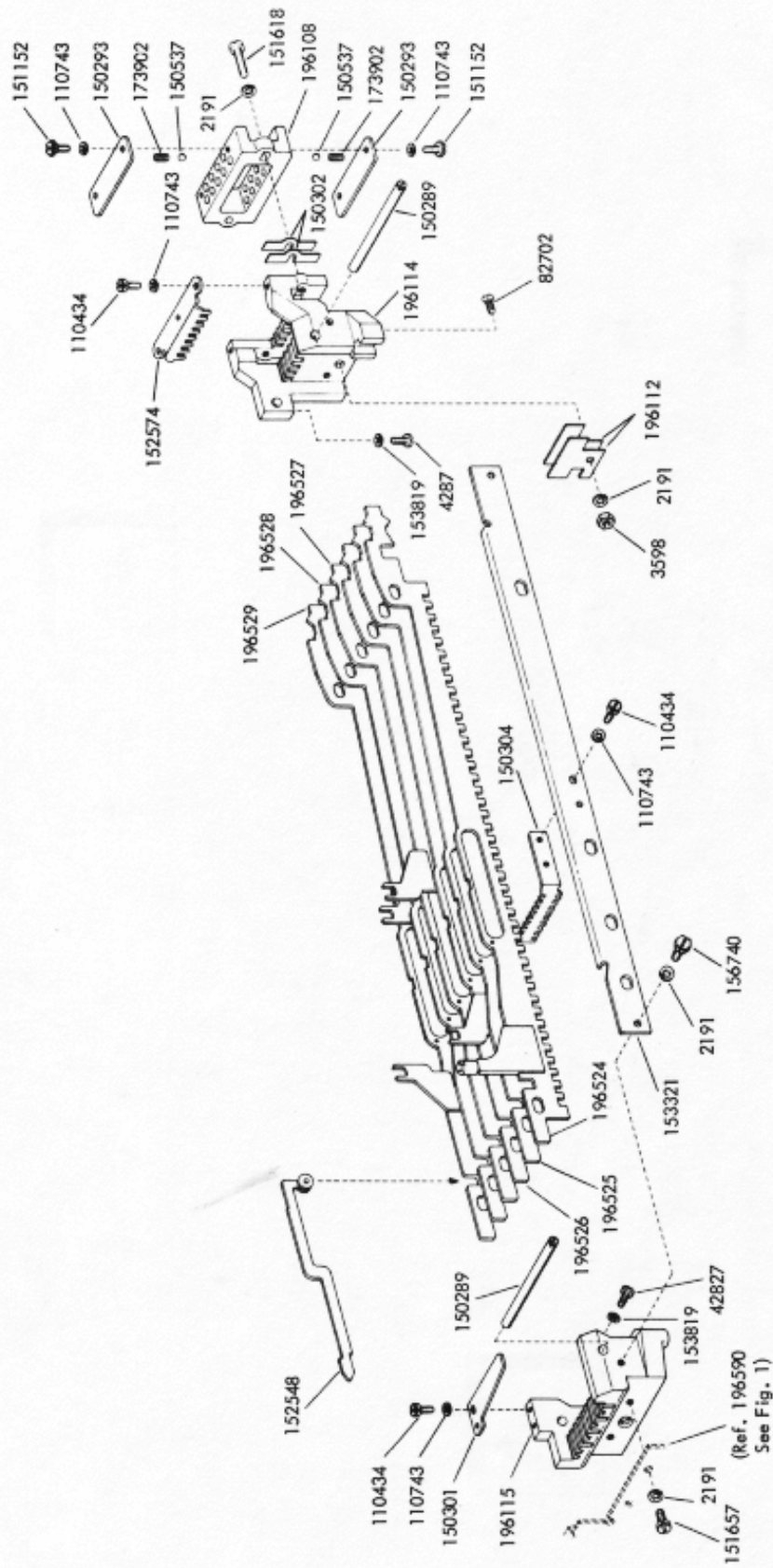


FIGURE 16. CODE BAR MECHANISM

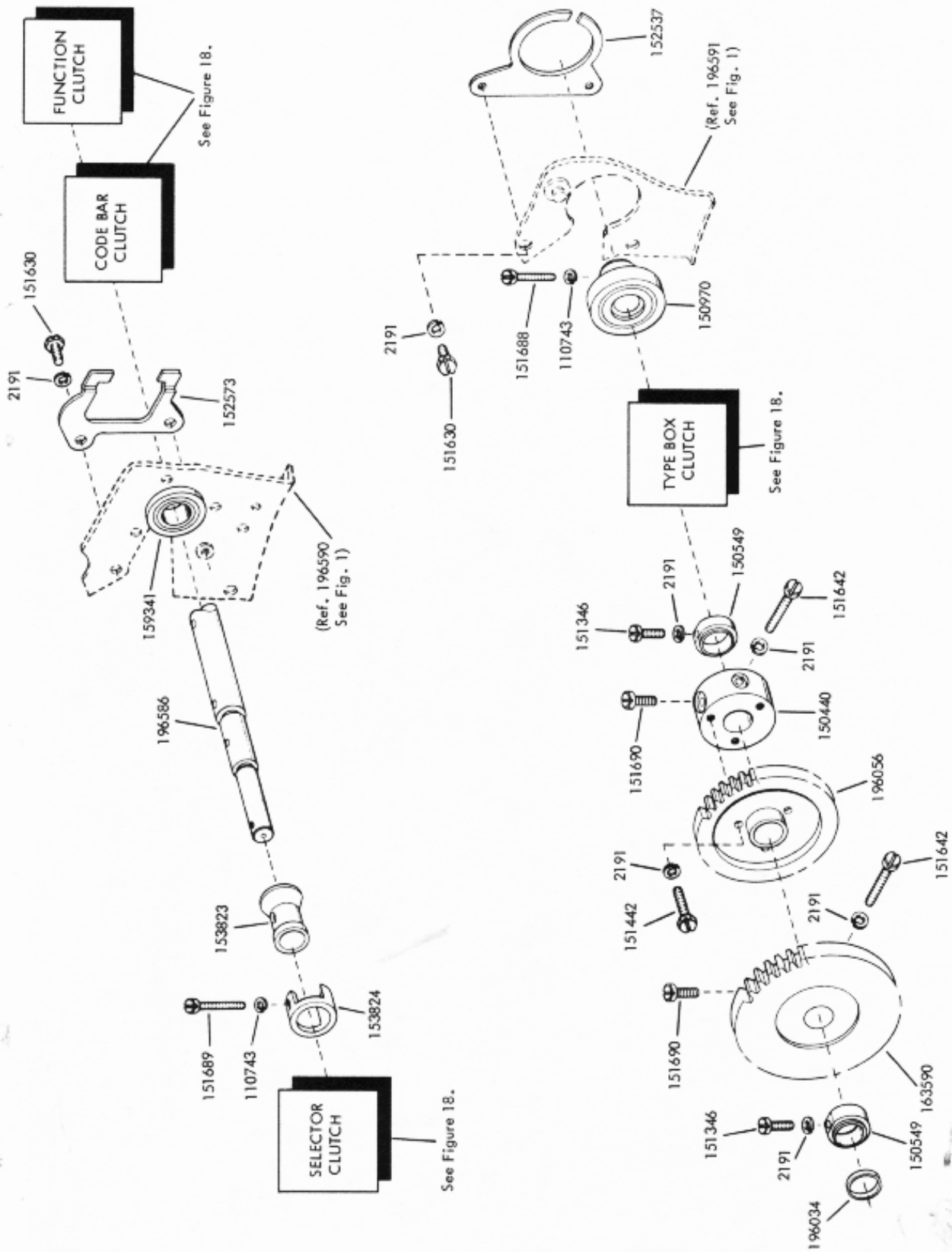


FIGURE 17. MAIN SHAFT

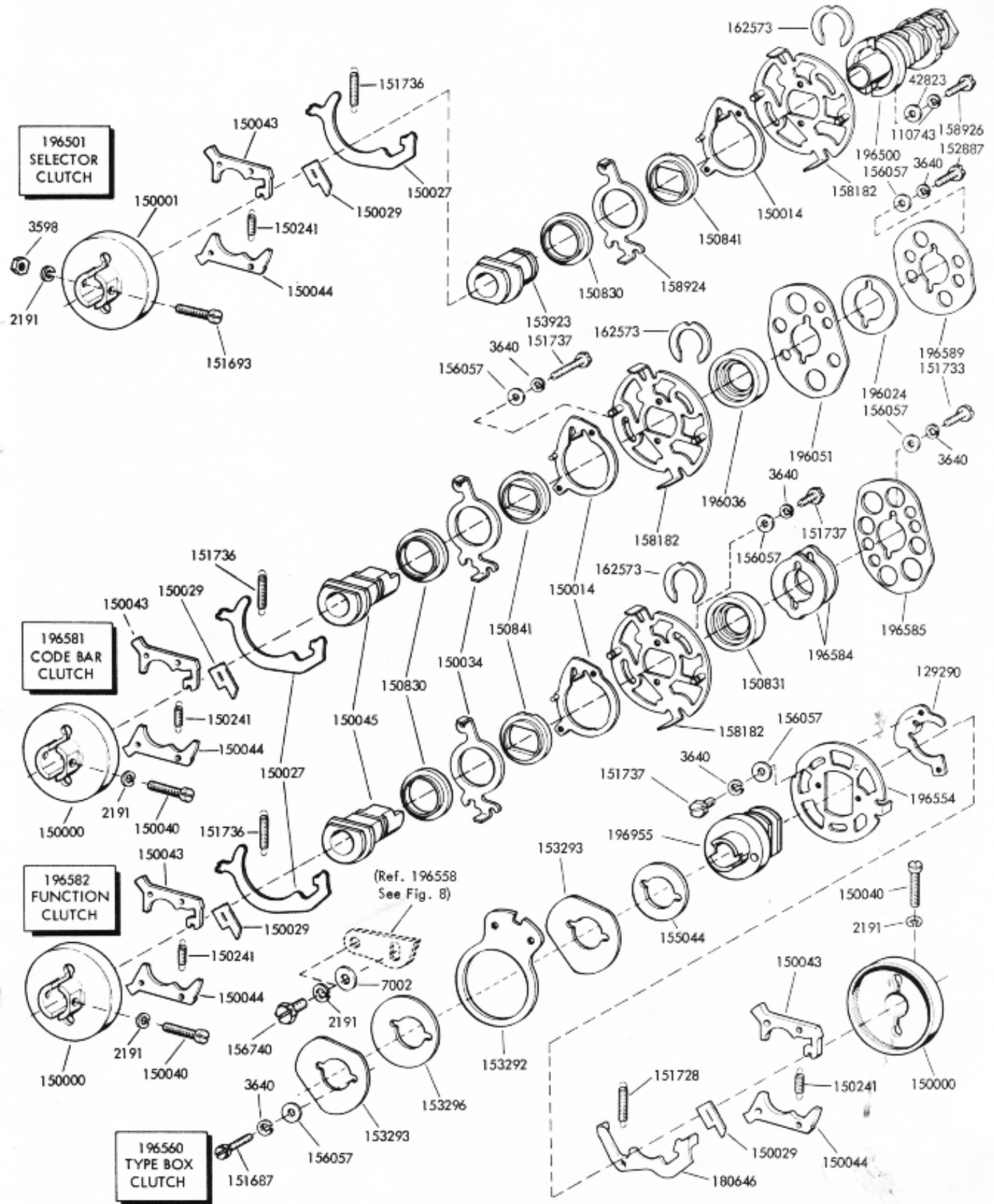
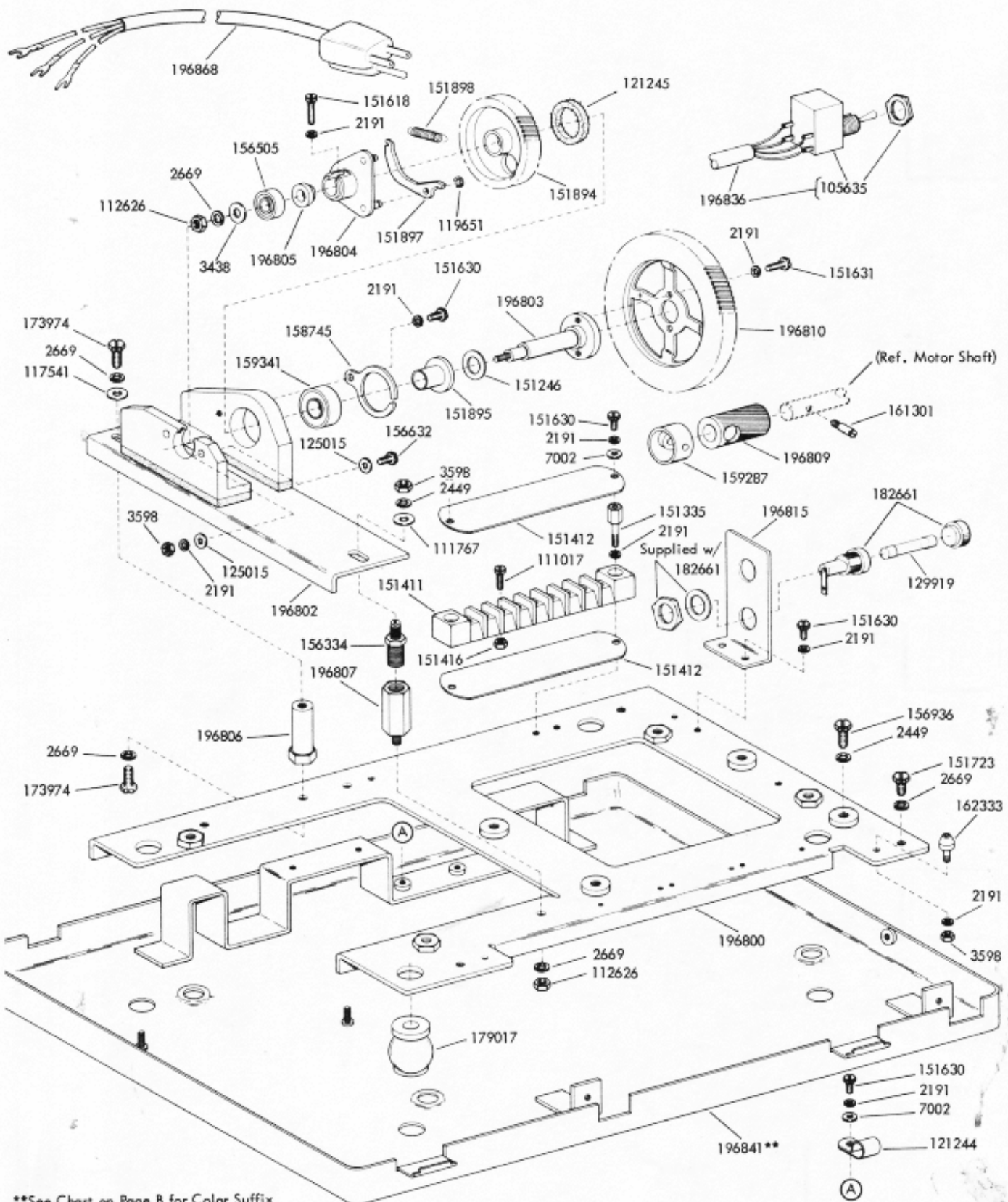
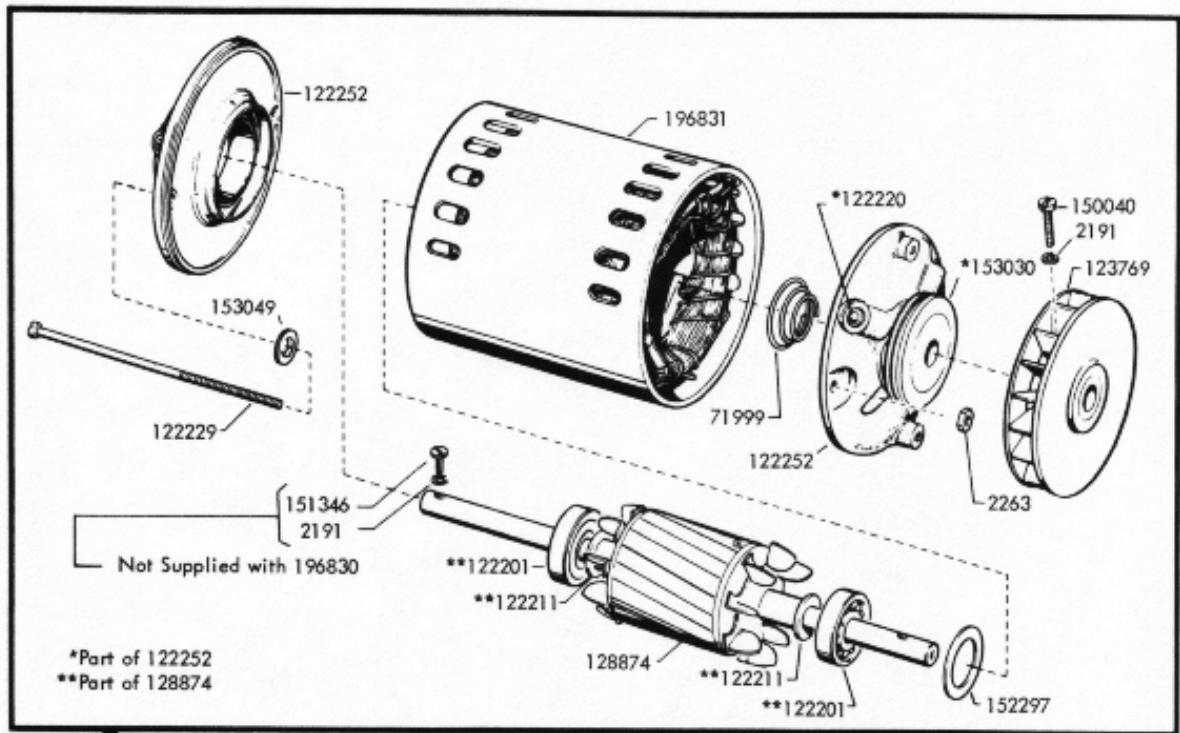


FIGURE 18. MAIN SHAFT CLUTCHES



**See Chart on Page B for Color Suffix

FIGURE 19. BASE



196830 AC Synchronous, 1/20 HP, 115V: 60 Cycle, 3600 RPM, GE Model 55C19LG17 (Clockwise Rotation)

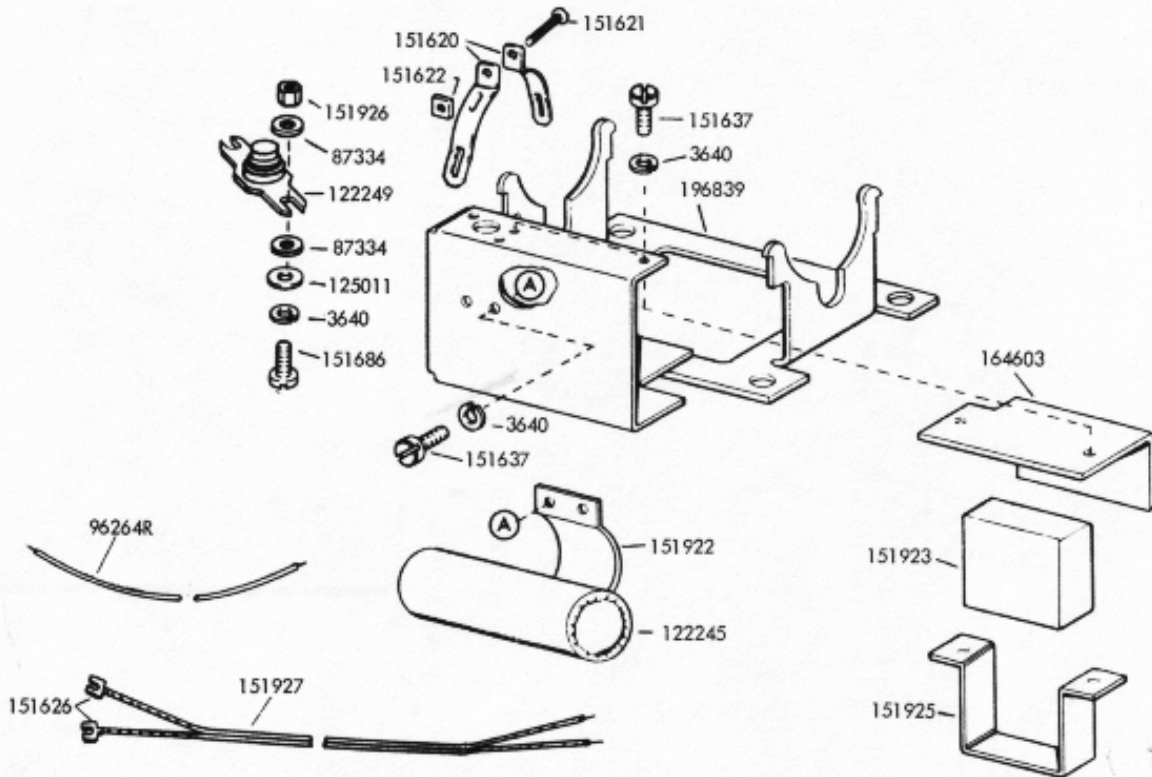
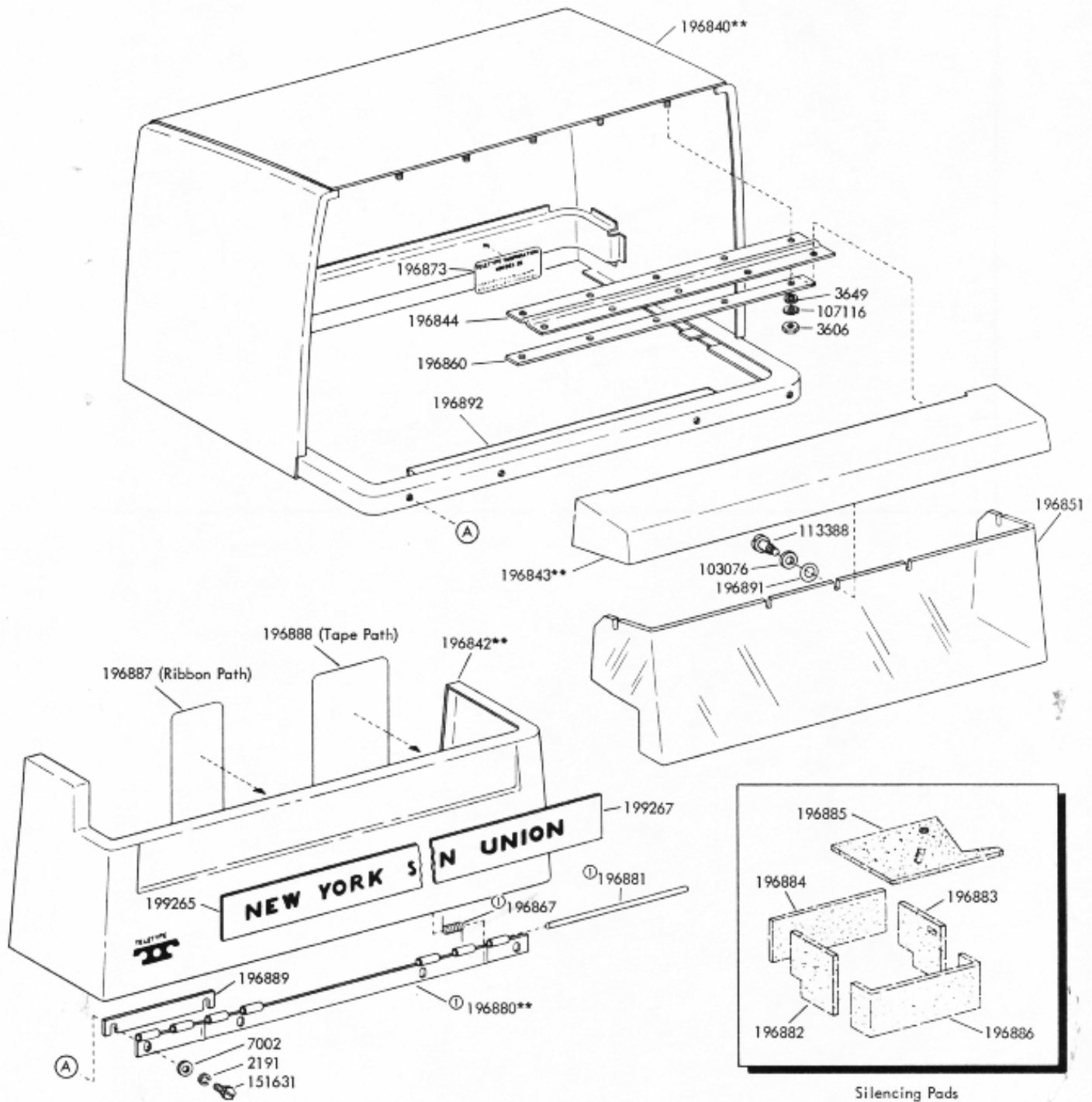
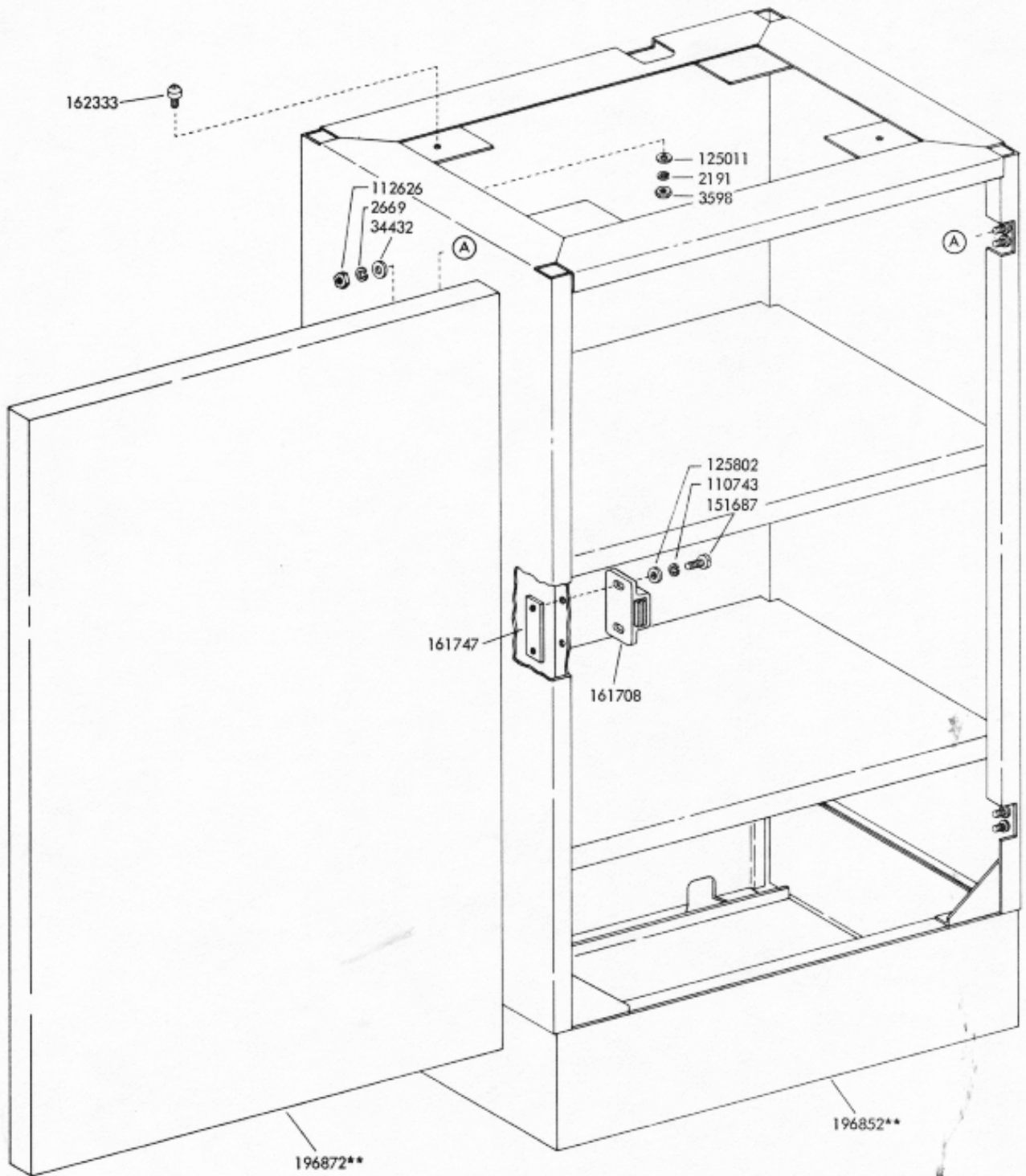


FIGURE 20. MOTOR UNIT



① Part of 196842**
 **See Chart on Page B for Color Suffix

FIGURE 21. COVER



**See Chart on Page B for Color Suffix

FIGURE 22. 196870 PEDESTAL ASSEMBLY

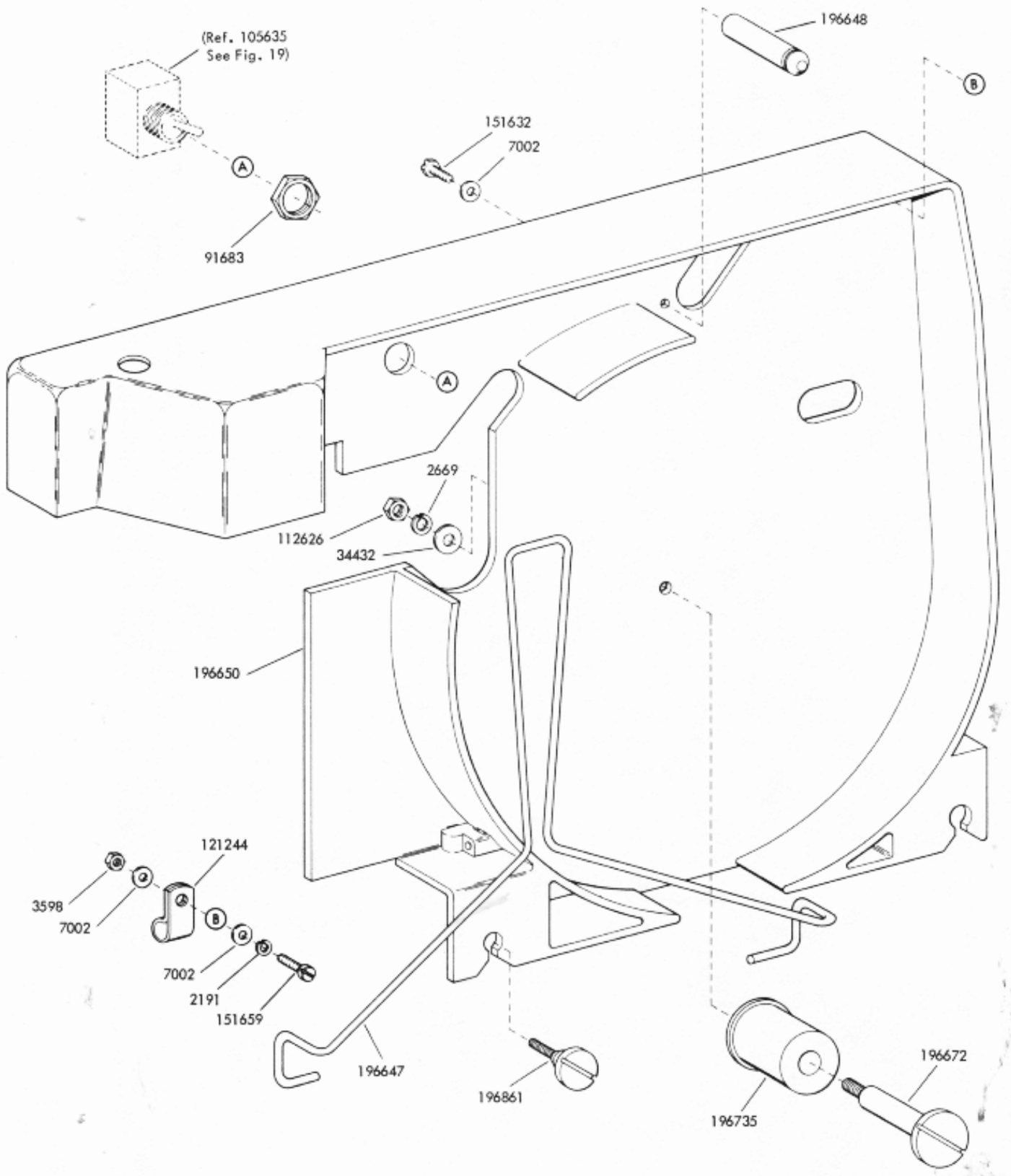


FIGURE 23. 196818 COVER PLATE ASSEMBLY

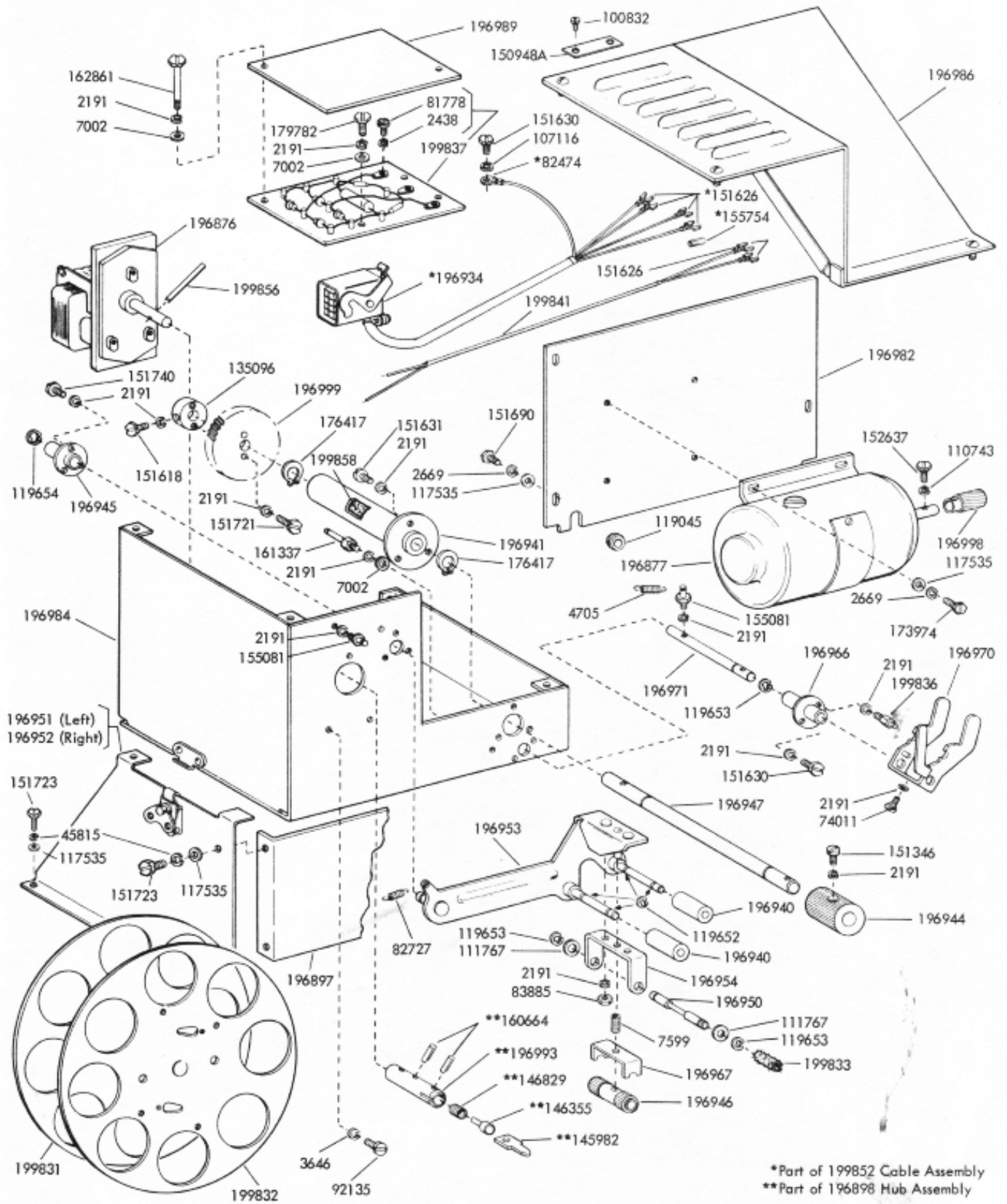
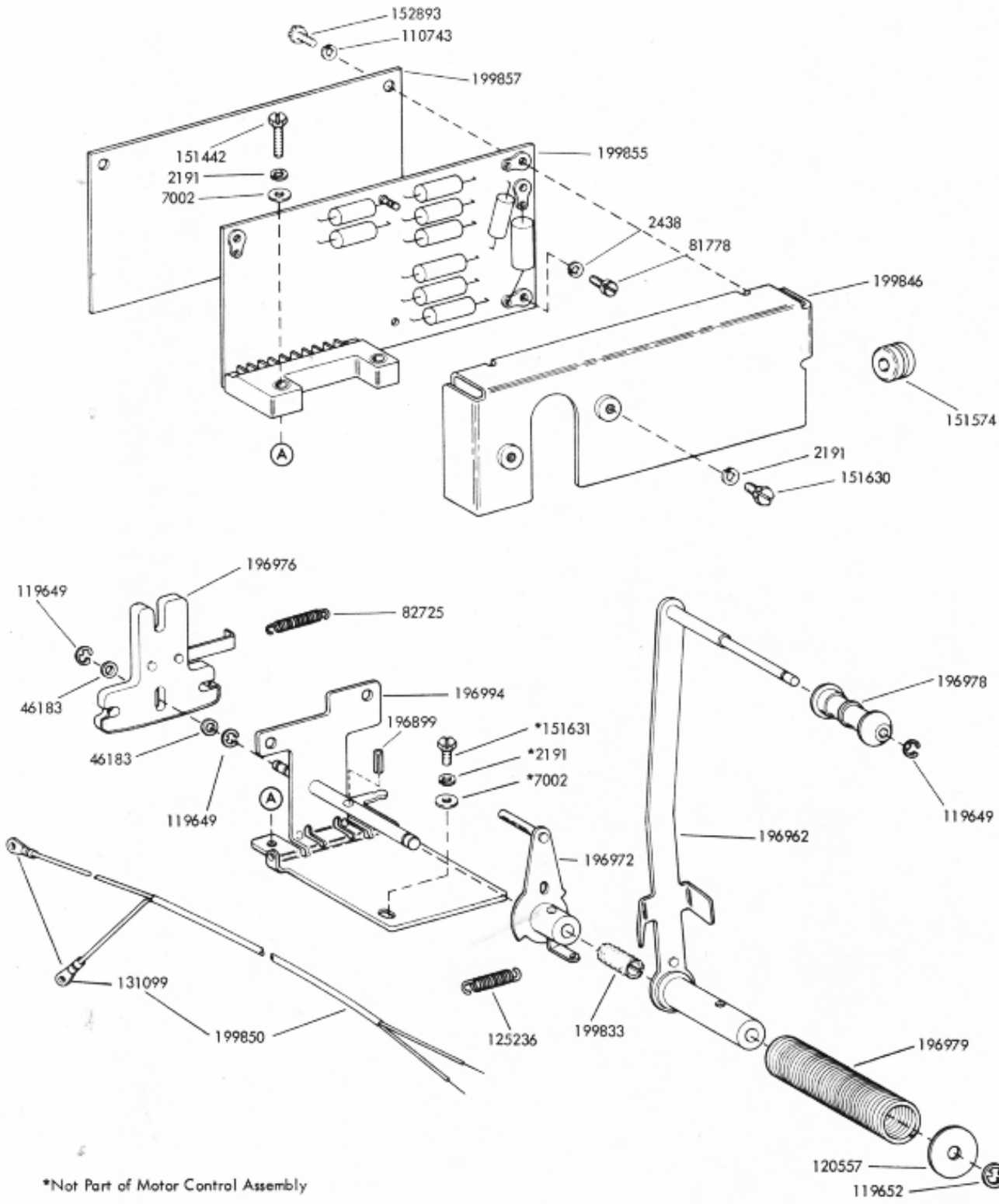


FIGURE 24. 196937 TAPE PULLER ASSEMBLY



*Not Part of Motor Control Assembly

FIGURE 25. 196939 MOTOR CONTROL ASSEMBLY

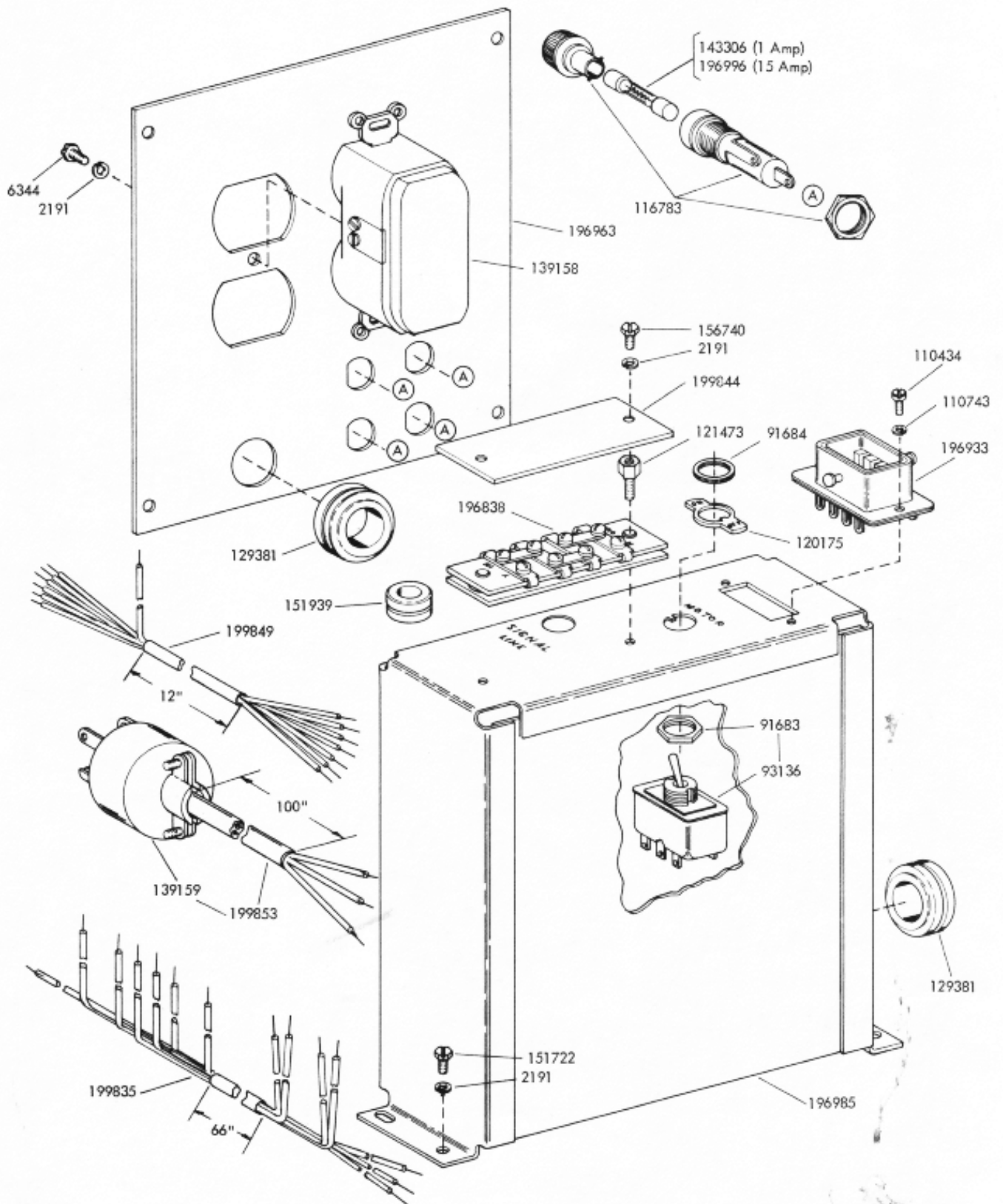
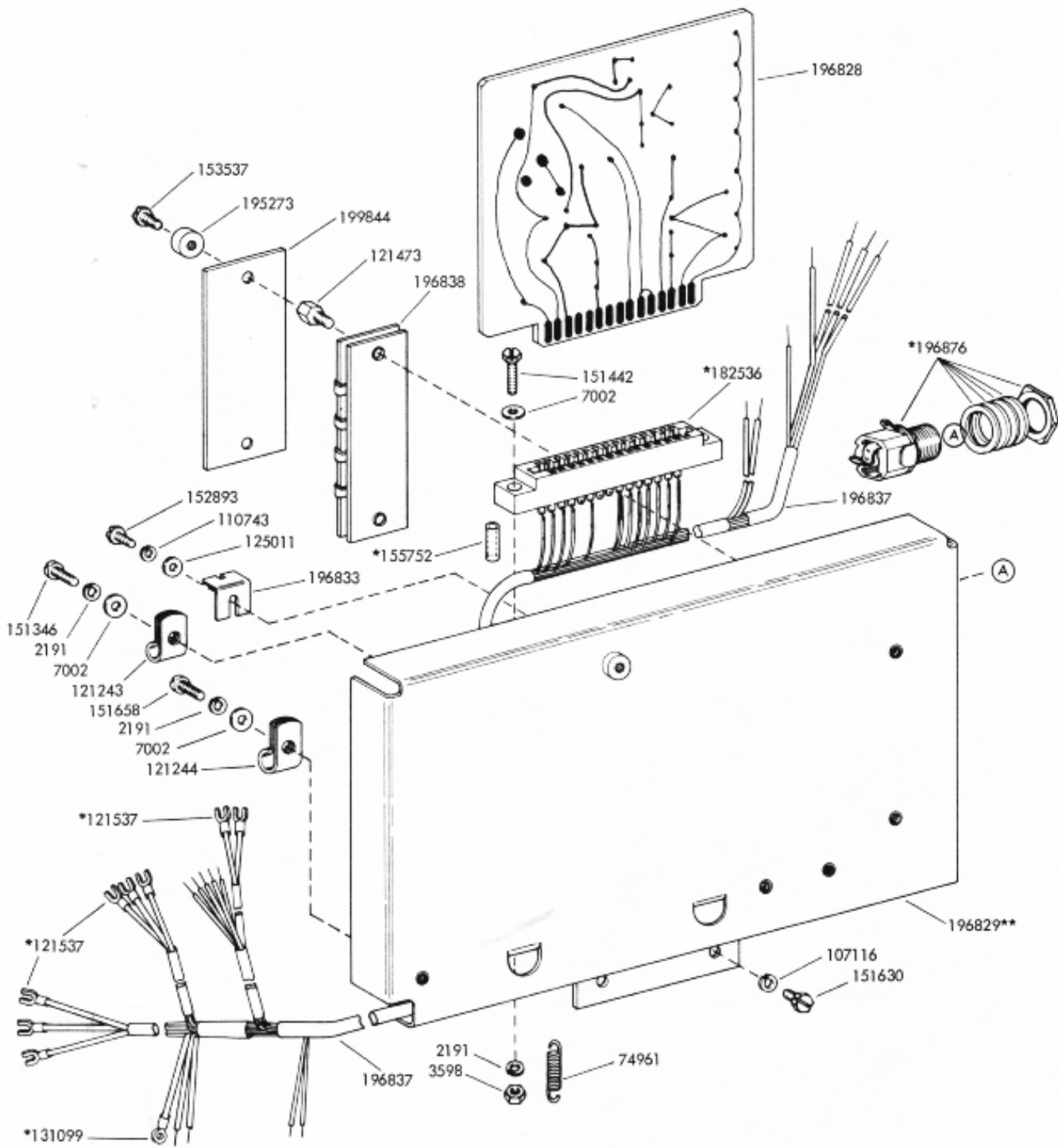


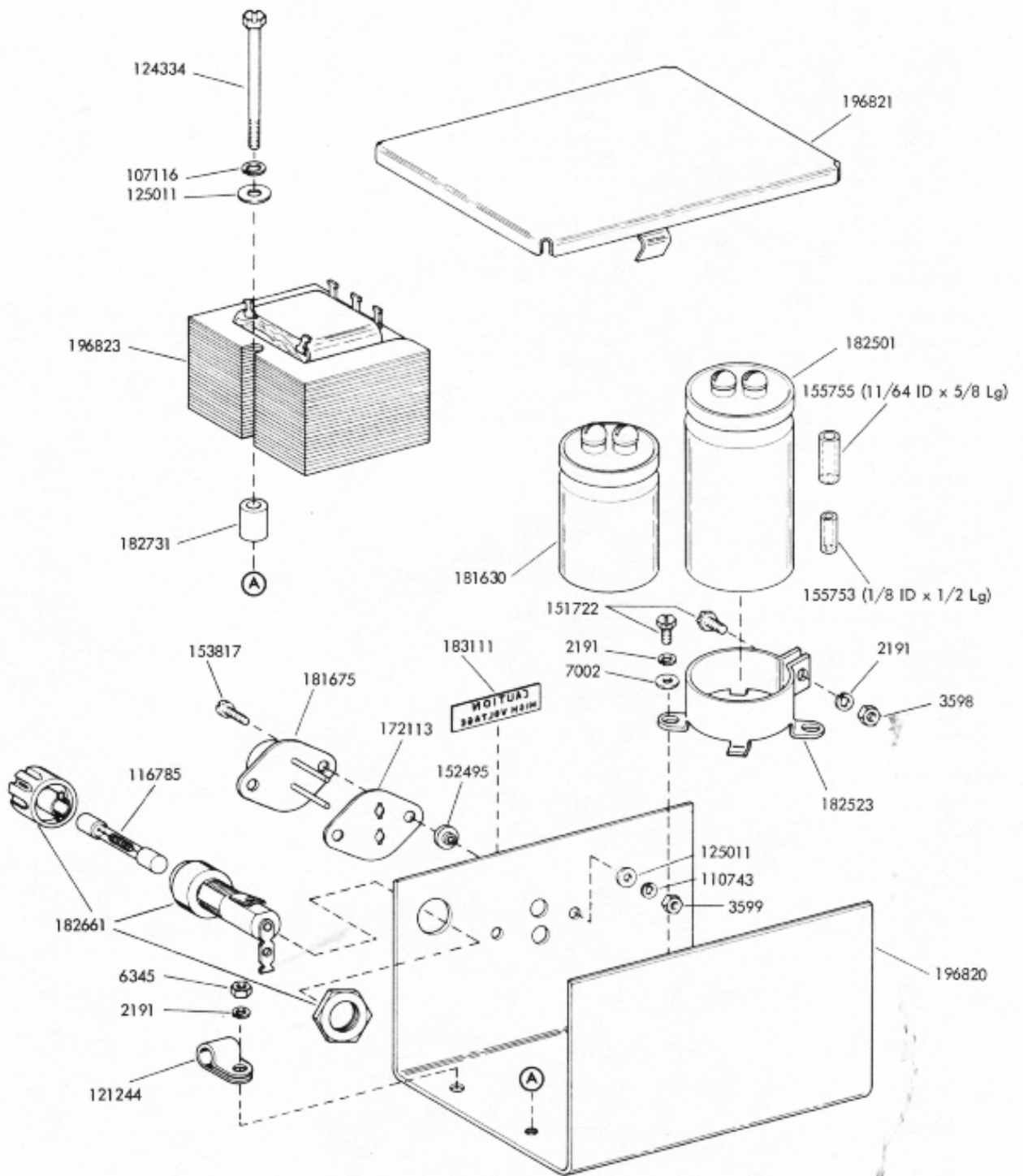
FIGURE 26. 196938 ELECTRICAL SERVICE ASSEMBLY



*Part of 196837 Cable Assembly

**See Chart on Page B for Color Suffix

FIGURE 27. 196832 ELECTRICAL PACKAGE



Note:
 Also included in the Power Supply Assembly
 is the 196837 Cable Assembly shown on Fig. 27.

FIGURE 28. 196826 POWER SUPPLY ASSEMBLY

NUMERICAL INDEX

Part Number	Description and Page Number	Part Number	Description and Page Number	Part Number	Description and Page Number
271M	Coil, Magnet 16	82727	Spring 25	121245	Clamp, Cable (5/16" ID) 20
1164	Screw (2-56 x 3/16 Fil) 7	82787	Spring 8	121473	Post (6-40) 27,28
1196	Screw, Shoulder (6-40) 9	83885	Nut (6-32 Hex) 25	121537	Terminal 28
2034	Washer, Flat 5,15	84226	Spring 13	121538	Terminal 16
2191	Washer, Lock 2 to 5, 7 to 29	85471	Screw (10-32 x 1 Hex) 7	122201	Bearing, Ball 21
2263	Nut (8-32 Hex) 21	86079	Washer, Felt 7,9,10	122211	Washer, Pull 21
2438	Washer, Flat 16,25,26	86714	Washer, Flat 13	122220	Oiler, Ball 21
2449	Washer, Lock 20	87334	Washer, Insulating 21	122229	Bolt (8-32) 21
2539	Nut (3/8-32 Hex) 9	90260	Spring 7	122245	Capacitor (43-48 mfd) 21
2669	Washer, Lock 2,7,8,15,20,23 to 25	90361	Washer, Felt 9,10,12	122252	Shield Assembly, End 21
3288	Washer, Flat 12	90504	Washer, Felt 9,12	123699	Screw, Shoulder (6-40) 12
3438	Washer, Flat 8,20	90517	Spring 15	123769	Fan 21
3598	Nut (6-40 Hex) 3,7 to 12,14, 17,19,20,23,24,28,29	90707	Washer, Flat 7	124334	Screw (6-40 x 1-27/32 Hex) 29
3599	Nut (4-40 Hex) 10,15,16,29	90791	Washer, Lock 11	125011	Washer, Flat 11 to 13,15,21, 23,28,29
3606	Nut (6-40 Hex) 5,22	90819	Washer, Felt 7,9	125015	Washer, Flat 16,20
3640	Washer, Lock 3 to 5,7,8,10 to 12,19,21	91683	Nut (15/32-32 Hex) 24,27	125236	Spring 26
3646	Washer, Lock 25	91684	Nut (15/32-32 Ring) 27	125241	Spring 16
3649	Washer, Flat 14,22	92135	Screw (8-32 x 3/8 Fil) 25	125268	Spring 10
4704	Spring 5	92682	Stud (4-40) 14	125802	Washer, Flat 13,23
4705	Spring 25	93117	Washer, Lock 7	128874	Rotor, Motor 21
6344	Screw (6-32 x 11/32 Hex) 27	93136	Switch, Toggle 27	129290	Disk, Adjusting 19
6345	Nut (6-32 Hex) 29	93356	Washer, Felt 9	129381	Grommet, Rubber 27
6800	Screw, Shoulder (6-40) 9	93634	Wick 7	129919	Fuse (4 Amp) 20
7002	Washer, Flat 2,4,7 to 12,14, 15,19,20,22,24 to 26,28,29	93758	Washer, Felt 7,9	130696	Washer, Felt 7
7599	Spring 25	96264R	Strap (5" Red) 21	131099	Terminal 12,26,28
8330	Washer, Flat 9,12	96717	Screw, Shoulder (4-40) 15	135096	Hub 25
8449	Spacer 9	96881	Screw (2-56 x 5/64 Fil) 2	139158	Connector, Receptacle (Duplex - 3 Pt) 27
22015	Spring 7,12	99278	Screw, Shoulder (6-40) 2	139159	Connector, Plug (3 Pt) 27
27425	Screw (2-56 x 5/32 Fil) 11	100832	Screw, Drive (#0-3/16) 25	139697	Screw (4-40 x 9/32 Fil) 10
34432	Washer, Flat 2,23,24	101386	Spring 15	143306	Fuse (1 Amp) 27
41382	Spring 15	103076	Washer, Flat 22	145982	Detent, Tape Reel 25
42661	Spring 7	104828	Screw (4-40 x 15/64 Fil) 11	146355	Plunger 25
42823	Washer, Flat 19	105635	Switch, Toggle 20	146829	Spring 25
42827	Screw (3-48 x 1/4 Fil) 17	107116	Washer, Lock 22,25,28,29	150000	Drum, Clutch 19
45104	Spring 4	110434	Screw (4-40 x 3/16 Fil) 7,11,15, 17,27	150001	Drum, Clutch 19
45815	Washer, Lock 2,4,6,25	110435	Nut (4-40 Hex) 14	150014	Disk, Adjusting 19
46183	Washer, Flat 26	110743	Washer, Lock 8,9,11,13 to 19,23, 25 to 29	150027	Lever, Shoe Release 19
70388	Spring 9	111017	Screw (6-40 x 5/16 Fil) 20	150029	Wick, Oil 6,19
71999	Spring, Motor Thrust 21	111767	Washer, Flat 20,25	150034	Disk (2 Stop) 19
73175	Washer, Lock 9	112214	Wick 7	150040	Screw (6-40 x 5/8 Fil) 9,10,19,21
74011	Screw, Shoulder (6-40) 25	112626	Nut (10-32 Hex) 6,8,15,20, 23,24	150043	Shoe, Secondary 6,19
74283	Washer, Spring 15	112628	Nut (3-48 Sq) 4	150044	Shoe, Primary 6,19
74553	Wick, Felt 11	113388	Screw, Shoulder (4-40) 22	150045	Bearing, Clutch Sleeve 19
74701	Spring 9	114876	Washer, Flat 10	150078	Nut, Shoulder (4-40) 11
74712	Spring 12	115122	Washer, Felt 8	150079	Stud (4-40) 11
74760	Spring 9	115221	Washer, Felt 12	150089	Screw (4-40 x 1/2 Fil) 16
74785	Roller 9	116783	Holder, Fuse 27	150241	Spring 6,7,15,19
74882	Spring 11	116785	Fuse (3 Amp) 29	150289	Stud (3-48) 17
74961	Spring 28	117535	Washer, Flat 25	150293	Plate, Retaining 17
76081	Washer, Flat 16	117541	Washer, Flat 20	150301	Plate, Retaining 17
76099	Washer, Flat 16	119045	Grommet, Rubber 25	150302	Shim (.006) 17
76806	Spring 8	119647	Ring, Retaining 8	150304	Bracket, Guide 17
78533	Spring 7	119648	Ring, Retaining 3,4,5,15	150320	Washer, Felt 7
79012	Insulator 16	119649	Ring, Retaining 7 to 10,13,26	150327	Roller, Ribbon 13
80356	Washer, Flat 3,4,10	119650	Ring, Retaining 3,7,13	150348	Shaft 9
81731	Spring 13	119651	Ring, Retaining 4,7,8,20	150349	Arm, Follower 9
81778	Screw (4-40 x 3/16 Fil) 16,25, 26	119652	Ring, Retaining 8 to 12,15,25,26	150352	Bushing 9
82249	Washer, Flat 5	119653	Ring, Retaining 7 to 10,12,13,25	150355	Lever, Latch 9
82463	Spring 8	119654	Ring, Retaining 12,25	150356	Lever, Trip 9
82474	Terminal 25	120175	Plate, Instruction (On-Off) 27	150382	Block, Guide 9,10
82702	Screw (6-40 x 9/32 Flat) 17	120557	Washer, Flat 26	150383	Spacer 10
82725	Spring 26	121243	Clamp, Cable (3/16" ID) 28	150386	Link, Ribbon Drive 9
		121244	Clamp, Cable (1/4" ID) 20,24, 28,29	150395	Screw, Shoulder (6-40) 9,10
				150401	Clamp 10
				150440	Hub 18

NUMERICAL INDEX (Continued)

Part Number	Description and Page Number	Part Number	Description and Page Number	Part Number	Description and Page Number
150450	Arm 14	151714	Spring 15	155081	Post, Spring 25
150471	Stud (6-40) 14	151721	Screw (6-40 x 3/4 Hex) 12,25	155589	Plate 14
150479	Stud (6-40) 15	151722	Screw (6-40 x 3/16 Hex) 9,10,14,27,29	155752	Sleeve, Insulating (5/64 ID x 1/2 Lg) 28
150481	Shaft 14	151723	Screw (10-32 x 3/8 Hex) 20,25	155753	Sleeve, Insulating (1/8 ID x 1/2 Lg) 29
150482	Plate 14	151728	Spring 19	155754	Sleeve, Insulating (1/16 ID x 1/2 Lg) 25
150507	Spring 14	151734	Screw (4-40 x 3/8 Hex) 11	155755	Sleeve, Insulating (11/64 ID x 5/8 Lg) 29
150537	Bearing, Ball 17	151736	Spring 19	156057	Washer, Flat 19
150549	Collar 18	151737	Screw (4-40 x 11/64 Hex) 13,19	156334	Stud 20
150687	Stud (6-40) 15	151738TE	Screw, Identification 11	156501	Screw (6-40 x 7/32 Fil) 3,4
150830	Bushing, Shoulder 19	151740	Screw (6-40 x 7/32 Hex) 25	156505	Bearing, Ball 20
150831	Ring, Retaining 19	151880	Nut (4-40 Hex) 5,7,11,13	156521	Screw, Shoulder Eccentric (6-40) 9
150841	Bearing 19	151894	Gear (48T) 20	156536	Screw (4-40 x 1/8 Fil) 15
150891	Block 9	151895	Bushing, Eccentric 20	156576	Washer, Felt 8
150923	Washer, Felt 7 to 10	151897	Lever 20	156577	Roller, Detent Lever 8
150930	Washer, Felt 7	151898	Spring 20	156632	Screw (6-40 x 13/32 Hex) 3,4,20
150948A	Plate, Identification (Teletype) 2,25	151922	Clamp 21	156740	Screw (6-40 x 7/32 Hex) 4,17,19,27
150949	Plate, Serial 2	151923	Relay, Motor Starting 21	156880	Jumper (2-3/8" Black) 16
150950	Plate, Code 2	151925	Clamp 21	156881	Jumper (1-1/2" Black) 16
150970	Bearing, Ball 18	151926	Nut (4-40 Hex) 21	156936	Screw (1/4-32 x 5/16 Hex) 20
150978	Screw (6-40 x 1-1/8 Fil) 16	151927	Cable, Motor 21	157194	Retainer, Spring 16
150990	Washer, Felt 10,12	151939	Grommet, Rubber 27	157238	Spring, Type Pallet 11
151036	Screw, Shoulder (4-40) 10	152147	Bearing, Ball 11	157252	Bushing 13
151073	Screw (4-40 x 5/32 Fil) 3,4,13	152297	Washer, Bearing 21	157261	Shaft 15
151152	Screw (4-40 x 3/16 Hex) 7,14,17	152401	Guide 15	158182	Disk (2 Stop) 19
151222	Washer, Felt 9	152402	Guide 15	158745	Clamp, Bearing 20
151246	Washer, Flat 20	152412	Link 15	158902	Lever, Marking Lock 15
151335	Stud (6-40) 20	152415	Stud, Adjusting (4-40) 16	158903	Bail, Stripper 15
151346	Screw (6-40 x 3/8 Fil) 18,21,25,28	152420	Lamination 16	158904	Lever, Start 15
151411	Block, Terminal 20	152423	Bracket, Mounting 16	158905	Lever, Spacing Lock 15
151412	Insulator 20	152425	Post, Spring 16	158906	Lever, Selecting 15
151416	Nut (6-40 Hex) 10,20	152426	Nut, Self-Locking (6-40) 16	158907	Spring 15
151442	Screw (6-40 x 1/2 Hex) 18,26,28	152427	Latch 10,15	158924	Disk 19
151574	Grommet, Rubber 26	152429	Rack, Selector 15	158945	Bracket 15
151603	Spacer 16	152441	Washer, Flat 15	158947	Plate 15
151606	Screw (10-32 x 1/4 Hex) 2	152445	Spring 15	158949	Plate 15
151618	Screw (6-40 x 7/16 Fil) 8,17,20,25	152495	Bushing 29	159178	Bracket 15
151620	Strap, Mounting 21	152507	Roller, Detent 7	159184	Wick, Lubricating 15
151621	Screw (6-32 x 3/4 Rd) 21	152537	Clamp 18	159185	Retainer, Wick 15
151622	Nut (6-32 Sq) 21	152548	Bar, Shift 17	159287	Retainer, Pinion 20
151626	Terminal 21,25	152573	Retainer 18	159341	Bearing, Ball 10,18,20
151627	Rod 2	152574	Plate 17	159597	Washer, Flat 7
151629	Nut (6-40 Spl) 9,12	152583	Bearing, Sleeve 14	160180	Armature 16
151630	Screw (6-40 x 1/4 Hex) 2,7 to 9,11,12,15,18,20,25,26,28	152589	Ratchet, Ribbon 10	160182	Bracket 16
151631	Screw (6-40 x 5/16 Hex) 8 to 10,12,13,16,20,22,25,26	152593	Housing, Bearing 9	160184	Plate, Stop 16
151632	Screw (6-40 x 3/8 Hex) 12,24	152637	Lever, Transfer 25	160186	Bushing, Shoulder 16
151637	Screw (4-40 x 1/4 Fil) 7,8,21	152893	Screw (4-40 x 1/4 Hex) 9,15,26,28	160664	Pin, Roll 25
151642	Screw (6-40 x 3/4 Fil) 18	152938	Spacer 7	161301	Post (6-40) 20
151657	Screw (6-40 x 1/4 Fil) 2,9,14,17	153030	Ring, Cushion 21	161337	Post, Stop (6-40) 10,25
151658	Screw (6-40 x 5/16 Fil) 3,9,10,28	153049	Washer, Fiber 21	161347	Washer, Felt 7
151659	Screw (6-40 x 1/2 Fil) 3,24	153292	Plate 19	161708	Latch, Magnetic 23
151685	Screw (4-40 x 5/16 Fil) 4,7,8,10,12	153293	Spacer, Clutch 19	161747	Plate, Nut 23
151686	Screw (4-40 x 3/8 Fil) 16,21	153296	Eccentric 19	162333	Stud, Locating (6-40) 20,23
151687	Screw (4-40 x 7/16 Fil) 13,19,23	153321	Bracket, Tie 17	162573	Retainer 19
151688	Screw (4-40 x 5/8 Fil) 16,18	153342	Screw (6-40 x 15/16 Hex) 12	162861	Screw (6-40 x 1-7/16 Fil) 25
151689	Screw (4-40 x 3/4 Fil) 18	153442	Screw (10-32 x 1/2 Hex) 2	163590	Gear (60T) 18
151690	Screw (10-32 x 5/16 Fil) 18,25	153489	Detent 15	164386	Bracket, Magnet 16
151693	Screw (6-40 x 9/16 Fil) 5,19	153530	Plate 11	164528	Bushing 13
		153531	Plate, Adjusting 11	164530	Bushing 13
		153532	Screw, Adjusting (4-40) 11	164531	Pawl, Check 13
		153537	Screw (6-40 x 9/32 Hex) 3,4,28	164532	Pawl, Feed 13
		153817	Screw (4-40 x 3/8 Hex) 29	164535	Shaft, Ribbon Ratchet (Right) 13
		153819	Washer, Lock 17		
		153823	Collar 18		
		153824	Clamp 18		
		154352	Spring 6		
		155044	Spacer 19		

NUMERICAL INDEX (Continued)

Part Number	Description and Page Number	Part Number	Description and Page Number	Part Number	Description and Page Number
164538	Shaft, Ribbon Ratchet (Left) 13	196121	Lever, Transfer (#1) 14	196554	Disk 19
164539	Spring, Ratchet 13	196122	Lever, Transfer (#2) 14	196557	Lever 9
164540	Detent 13	196123	Lever, Transfer (#3) 14	196558	Link 9
164603	Insulator 21	196124	Lever, Transfer (#4) 14	196559	Slide 10
164964	Washer, Felt 13	196125	Lever, Transfer (#5) 14	196560	Clutch Assembly, Type Box 19
164965	Washer, Flat 13	196126	Lever, Transfer (#6) 14	196561	Lever 10
170113	Arm 14	196129	Bracket 14	196563	Bracket 10
170118	Bracket 14	196130	Link 14	196564	Lever 10
170121	Shaft 14	196131	Lever, Front 14	196565	Post, Eccentric (6-40) 10
170123	Bracket, Retaining 14	196132	Lever, Rear 14	196571	Bracket 9
170198	Arm, Stop 15	196133	Roller 14	196572	Bracket 9
172113	Board Assembly, Terminal 29	196134	Screw (6-40 x 1-1/4 Flat) 14	196573	Shaft 9
173902	Spring, Compression 17	196142	Housing, Bearing 3	196575	Bracket 2
173974	Screw (10-32 x 5/16 Hex) 2, 20, 25	196144	Wick, Felt 3	196576	Bracket 9
176417	Ring, Retaining 25	196145	Post (6-40) 3	196577	Bracket 2
179017	Mount, Vibration 20	196148	Pinion (32T) 3	196578	Bar, Support 2
179782	Screw (6-40 x 7/8 Hex) 25	196149	Gear, Idler (40T) 6	196579	Bracket 2
180646	Lever, Shoe Release 19	196158	Bushing 4	196581	Clutch Assembly, Code Bar 19
181630	Capacitor (500 mfd) 29	196159	Washer, Thrust 4	196582	Clutch Assembly, Function 19
181675	Transistor, Power 29	196162	Drum w/Gear, Clutch (40T) 6	196583	Plate 12
182501	Capacitor (1500 mfd) 29	196166	Bearing, Thrust 4	196584	Spacer, Clutch 19
182523	Clamp, Mounting 29	196168	Latch 4	196585	Cam 19
182536	Connector, Card (15 Pt) 28	196170	Latch 4	196586	Shaft, Main 18
182661	Post, Fuse 20, 29	196172	Plate w/Arm 4	196589	Cam 19
182731	Post 29	196175	Plate w/Arm 4	196590	Frame, Left 2
183111	Label 29	196178	Plate w/Arm 4	196591	Frame, Right 2
195165	Shaft w/Bearings & Gear 3	196179	Lever, Shoe Release 6	196592	Plate, Front 2
195240	Post (4-40) 16	196181	Gear (21T) 3	196593	Bushing, Eccentric 8
195273	Bushing 28	196182	Slide 3, 4	196601	Casting 7
196007	Link 5	196186	Lever 3	196602	Post (6-40) 7
196009	Shaft 5	196187	Lever 3	196605	Shaft w/Rollers 7
196010	Link 5	196188	Bail 3	196608	Screw, Adjusting (4-40) 7
196014	Plate 3, 4	196189	Bail 3	196609	Block, Stop 7
196017	Spacer 5	196191	Bearing, Ball 5	196610	Shaft, Print Hammer 7
196018	Bushing 3, 4, 5	196192	Link Assembly (#4) 6	196611	Block, Selector Pin 7
196020	Spring, Flat 11	196194	Link Assembly (#2) 6	196612	Slide, Selecting 7
196022	Plate 11	196195	Link Assembly (#3) 6	196614	Plate, Mounting 7
196023	Spacer 9	196196	Link Assembly (Right) 5	196615	Retainer, Lever 7
196024	Spacer 19	196197	Link Assembly (Left) 5	196616	Guide, Plunger 7
196026	Shaft w/Arm & Bearing 12	196203	Guide 3, 4, 10	196617	Screw, Shoulder (4-40) 7
196028	Lever, Cam Follower 12	196205	Latch 4	196619	Arm, Connecting 7
196030	Plate 9	196208	Plate 4	196621	Plate, Adjusting 7
196032	Shaft w/Arm 12	196209	Post (6-40) 3	196623	Link, Print Hammer Shaft 12
196034	Spacer 18	196210	Post (6-40) 3	196624	Shaft 7
196035	Roller 9, 12	196214	Screw, Shoulder (4-40) 5	196625	Lever, Accelerating (L.H.) 7
196036	Ring, Retaining 19	196215	Screw, Shoulder (4-40) 5	196626	Lever, Accelerating (R.H.) 7
196037	Lever, Cam Follower 9	196219	Plate, Nut 11	196627	Lever, Print Hammer 7
196042	Link 9	196274	Gear (22T) 9, 10	196628	Lever, Print Hammer 7
196043	Lever, Latch 9	196275	Spacer 9	196631	Plate, Mounting 7
196051	Cam, Code Bar Positioning 19	196276	Spacer 12	196634	Lever, Latch (Right) 7
196055	Shaft 9	196277	Bracket, Spring 9	196635	Lever, Latch (Left) 7
196056	Gear (28T) 18	196500	Sleeve, Selector Cam 19	196636	Link 7
196058	Clamp 9, 10	196501	Clutch Assembly, Selector 19	196638	Lever, Detent 7
196059	Clamp 10	196505	Lever, Push 15	196639	Screw, Eccentric Shoulder (6-40) 7
196060	Housing, Bearing 12	196506	Knob 15	196640	Spacer 12
196062	Wick, Felt 12	196508	Lubricator Assembly 15	196646	Knob 8
196064	Lever, Cam Follower 12	196509	Lubricator 15	196647	Retainer, Tape 24
196090	Stud 7	196524	Bar, Code (#6) 17	196648	Post (6-40) 24
196092	Plunger 7	196525	Bar, Code (#5) 17	196649	Guide, Ribbon 12
196093	Pin 7	196526	Bar, Code (#4) 17	196650	Plate, Cover 24
196094	Head, Print Hammer 7	196527	Bar, Code (#3) 17	196651	Chute, Tape 8
196108	Bracket 17	196528	Bar, Code (#2) 17	196655	Screw, Eccentric Shoulder (6-40) 12
196112	Plate 17	196529	Bar, Code (#1) 17	196656	Handle 7
196114	Bracket 17	196532	Shield w/Insulator 9	196661	Plate 13
196115	Bracket 17	196534	Bracket, Guide 15	196662	Slide 13
196119	Arm 14	196536	Guide 14		
		196540	Plate, Patent 2		

NUMERICAL INDEX (Continued)

Part Number	Description and Page Number	Part Number	Description and Page Number	Part Number	Description and Page Number
196663	Plate, Adjusting 13	196810	Gear (84T) 20	196934	Connector, Plug (8 Pt) 25
196664	Lever w/Pins, Ribbon Reverse 13	196815	Bracket 20	196937	Puller Assembly, Tape 25
196666	Lever w/Pins 13	196818	Plate Assembly 24	196938	Service Assembly, Electrical 27
196668	Link 13	196820	Bracket 29	196939	Control Assembly, Motor 26
196669	Housing 8	196821	Clip 29	196940	Idler 25
196671	Handle 2	196823	Transformer w/Terminals 29	196941	Bearing Assembly 25
196672	Post (10-32) 24	196826	Supply Assembly, Power 29	196944	Roller, Tape 25
196674	Guide w/Roller, Tape 2	196828	Card, Circuit 28	196945	Hub 25
196676	Bracket 12	196829**	Container w/Hinge 28	196946	Roller, Tape Tension 25
196677	Roller 12	196830	Motor, Synchronous (1/20 HP, 115/1/60 Cycle, GE Model 55C19LG17) 21	196947	Shaft 25
196678	Shaft 12			196950	Shaft, Pressure Roller 25
196679	Plate w/Platen 12	196831	Stator, Motor 21	196951	Bracket, Left Support 25
196681	Ratchet (24T) 8	196832	Electrical Package 28	196952	Bracket, Right Support 25
196682	Lever 8	196833	Clip 28	196953	Bail 25
196684	Stud, Eccentric (10-32) 8	196836	Cable Assembly 20	196954	Bail 25
196686	Roller 8	196837	Cable Assembly 28	196962	Lever 26
196687	Roller 8	196838	Strip, Terminal 27,28	196963	Cover 27
196688	Link, Feed Pawl Drive 8	196839	Bracket 21	196966	Hub 25
196690	Link 8	196840**	Cover 22	196967	Bail, Pressure 25
196691	Link 8	196841**	Pan, Base 20	196970	Bail, Latch 25
196692	Lever, Detent 8	196842**	Cover, Lower Front 22	196971	Shaft 25
196693	Link 9	196843**	Lid, Upper 22	196972	Lever 26
196694	Shaft 8	196844	Hinge 22	196976	Rocker 26
196695	Link 8	196851	Window 22	196978	Roller 26
196703	Link Assembly (#1T) 6	196852**	Pedestal 23	196979	Spring 26
196704	Bail 5	196860	Plate 22	196982	Plate, Motor 25
196705	Plate, Top 2	196861	Screw, Shoulder (6-40) 24	196984	Frame w/Fasteners 25
196707	Pawl, Feed 8	196867	Spring, Torsion 22	196985	Box, Electrical Service Unit 27
196708	Lever 8	196868	Card w/Plug 20	196986	Cover 25
196709	Shaft 8	196870**	Pedestal Assembly 23	196989	Board w/Posts 25
196717	Screw, Set (6-40) 12	196872**	Door 23	196993	Hub 25
196721	Plate, Front Pallet Box 11	196873	Plate, Instruction 22	196994	Bracket 26
196722	Plate, Rear Pallet Box 11	196876	Motor, Shaded Pole (115 Volt - 60 Cycle AC, 20 RPM) 25,28	196996	Fuse (15 Amp) 27
196724	Clamp, Type Box 11	196877	Motor, DC Shunt (1/100 HP - 115 Volt DC, GE Model 5BN56HC34) 25	196998	Gear, Worm 25
196725	Rack (12T) 10			196999	Gear (50T) 25
196726	Rack (12T) 9			199265	Nameplate (New York Stock Exchange) 22
196727	Track, Type Box Carriage 11			199267	Nameplate (Western Union) 22
196728	Roller 9,10	196880**	Hinge 22	199831	Reel, Tape 25
196729	Guide 10	196881	Pin, Steel 22	199832	Reel, Tape 25
196730	Guide 9	196882	Pad, Left 22	199833	Wick, Felt 25,26
196732	Link 11	196883	Pad, Right 22	199835	Cable Assembly 27
196733	Post, Eccentric (6-40) 11	196884	Pad, Rear 22	199836	Post (6-40) 25
196735	Roller 24	196885	Pad, Top 22	199837	Rectifier Assembly 25
196740	thru Pallet, Type 11	196886	Pad, Front 22	199841	Cable Assembly 25
196791		196887	Plate, Instruction (Ribbon Path) 22	199844	Insulator 27,28
196800	Plate, Base 20	196888	Plate, Instruction (Tape Path) 22	199846	Shield w/Posts 26
196802	Plate 20	196889	Shim (.020) 22	199849	Cable Assembly 27
196803	Shaft 20	196891	Washer, Rubber 22	199850	Cable Assembly 26
196804	Plate 20	196892	Gasket 22	199852	Cable Assembly 25
196805	Spacer 20	196897	Brace 25	199853	Card w/Plug 27
196806	Post (10-32) 20	196898	Hub Assembly 25	199855	Card, Circuit 26
196807	Post 20	196899	Pin, Roll 26	199856	Pin, Roll 25
196809	Gear (15T) 20	196933	Connector, Receptacle (8 Pt) 27	199857	Shield 26
				199858	Wick, Felt 25