

(CANADIAN ?)
TICKER

136 PPM
15 WPM

CODE

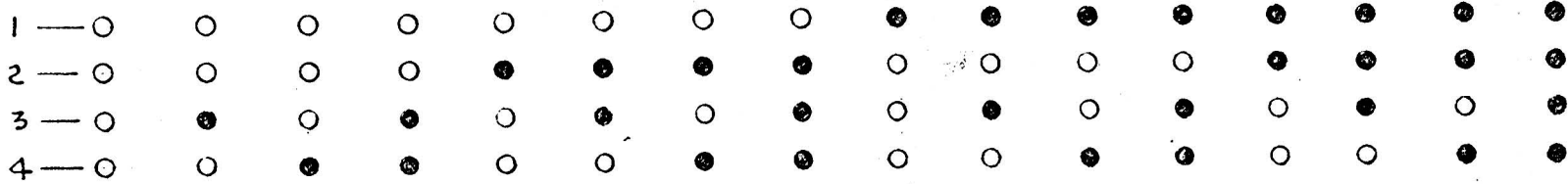
1	0	0	0	0	0	0	0	1	1	1	1	1	1	1	1	
2	0	0	0	1	1	1	1	0	0	0	0	0	0	0	0	
3	1	0	1	0	1	0	1	0	1	0	1	0	1	0	1	
4	0	1	1	0	0	1	1	0	0	1	1	0	0	1	1	
5	0															
6																
0 0		P	W	N	.	I	R	C	E	S	D	F	A	U	J	K
1 0	T	H	O	M	L	P	G	V	Z	Y	B	X	W	Q	&	R
0 1			O	SPACE	C	9	END	3	5	S	4	6	I	SPACE	END	SPACE
1 1		8	SPACE	\$	S	S	7	3	7	3	2	5	1	1	B	END
	8		FIG. 2					8	8	4		8	2	4		OUT

! - Mark
0 - Space

TYPEBOX ARRANGEMENT (VIEW FROM STEM END)
AND CODE CHART

CANADIAN
TICKER

NOTE: NUMBER ONE ECCENTRIC
IS IN HORIZONTAL POSITION
MECHANISM IS REVERSED
FROM THAT OF THE PAGE
MACHINE.



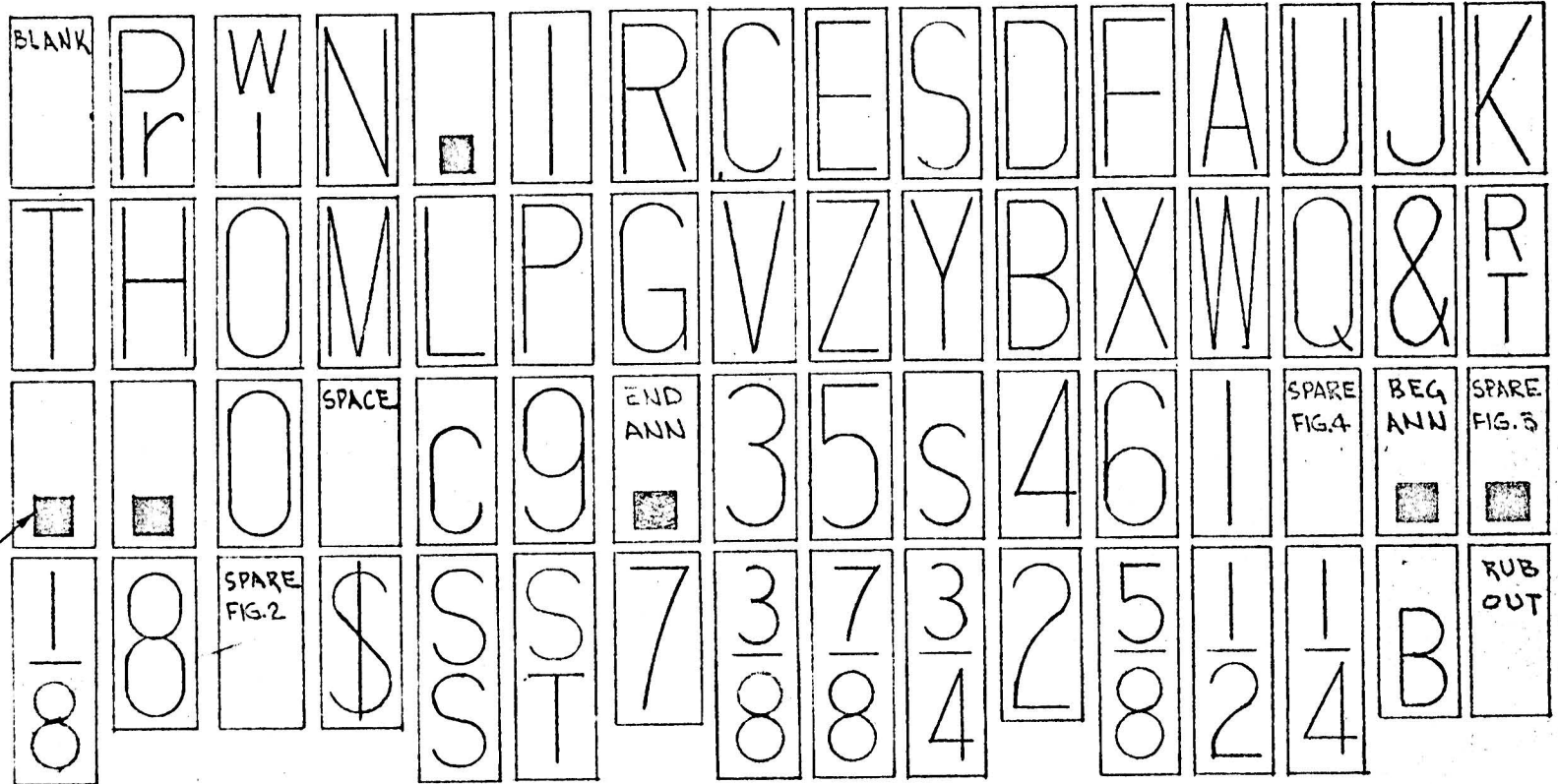
5 6
○ ○

● ○

○ ●

● ●

FEED OUT ONLY



TICKER TYPE BOX ARRANGEMENT

1-31-64

gac