

INSTRUCTIONS FOR INSTALLING THE 154174 MODIFICATION KIT  
ON A MODEL 28 KEYBOARD LK6 OR LAK TO PROVIDE REPEAT SPACE OPERATION

1. GENERAL

a. The 154174 Modification Kit when installed on a Model 28 Keyboard LK6 or LAK provides the repeat space function when the space bar is held depressed.

b. The 154174 Modification Kit consists of:

1	3599	Nut 4-40 Hex	*1	139754	Screw 6-40 Shoulder
1	3606	Nut 6-40 Hex	*1	154112	Lever
1	3640	Washer, Lock	1	154114	Post, Spring
1	110437	Spring	*1	161347	Washer, Felt

c. For part numbers referred to and for parts ordering information, see Teletype Model 28 Printer Parts Bulletin.

\*2. INSTALLATION (Figure 1)

a. Remove the nonrepeat lever, pawl and spring subassembly from the rear plate of the signal generator.

\*b. Place the 154112 Lever on the 139754 Shoulder Screw, then place the 161347 Felt Washer on the shoulder of the hub of the lever.

c. Lower this subassembly down between the #1 code bar and the rear plate of the signal generator so as to feed the threaded end of the 139754 Screw into the threaded hole provided. It may be necessary to spring the #1 code bar over against the #2 code bar to gain clearance for this stage of installation. The code bars are made of spring steel and will resume their normal position when released.

d. Thread on the 3606 Nut. Tighten it so as to jam lock the 109201 Screw already tightened into the generator rear plate.

e. Place the 154114 Spring Post in the clearance hole provided in the signal generator rear plate and fasten it by means of the 3640 Lock Washer and 3598 Nut.

f. Hook the 110437 Spring between the lug on the 154112 Lever and the 154114 Spring Post.

g. Replace the nonrepeat lever, pawl and spring subassembly and adjust the gap between the roller on the reset bail and the step in the nonrepeat lever to .010 to .020 inch in accordance with standard practice.

\*3. ADJUSTMENTS (Figure 2) AND LUBRICATION

For adjustment and lubrication procedure refer to standardized information. Check the following:

Repeat Space Lever Spring Tension

\*Indicates Change

\*

\*

\*

Printed in U.S.A.

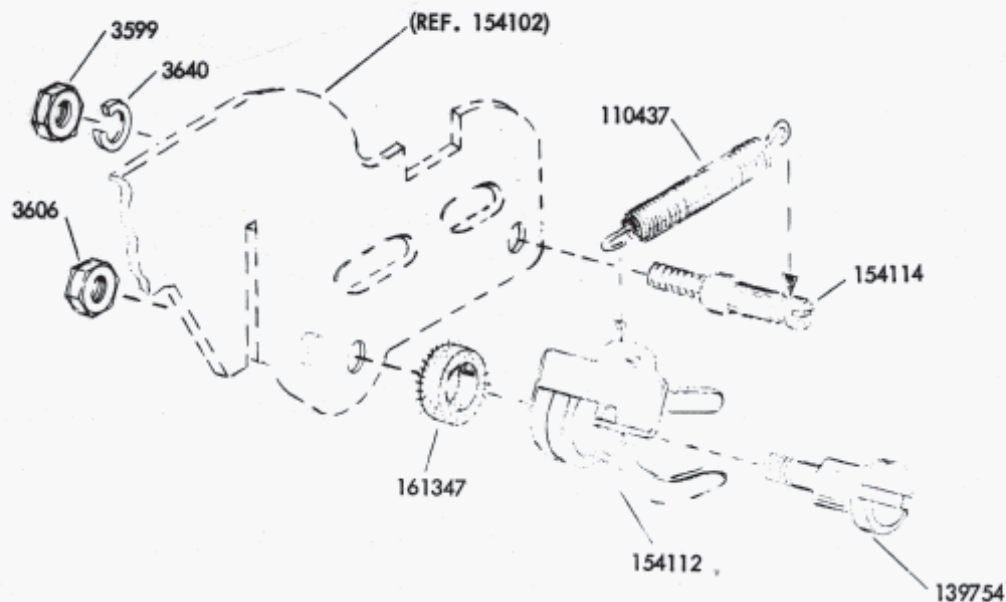
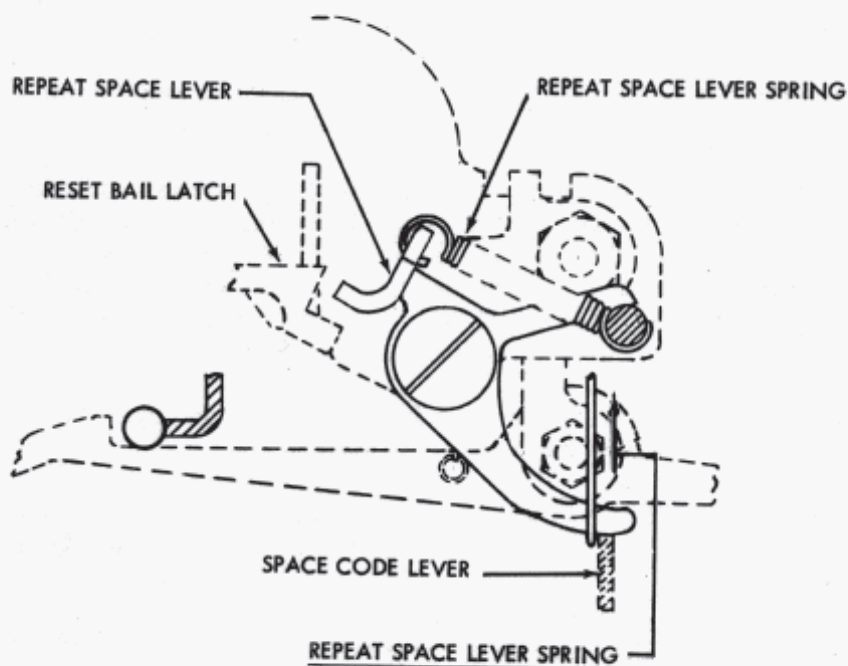


FIGURE 1

154174 MODIFICATION KIT TO PROVIDE REPEAT ON SPACE MECHANISM

REPEAT SPACE MECHANISM



REPEAT SPACE LEVER SPRING

- (1) REQUIREMENT  
 MIN. 1 OZ.  
 MAX. 1-1/2 OZ.  
 TO PULL REPEAT SPACE LEVER IN  
 ENGAGEMENT WITH RESET BAIL LATCH.
- (2) REQUIREMENT  
 WITH POWER APPLIED AND THE  
 SPACE BAR FULLY DEPRESSED,  
 THE SPACE CHARACTER SHOULD  
 BE REPEATED AS LONG AS THE  
 SPACE BAR IS HELD DEPRESSED.

FIGURE 2