

INSTRUCTIONS FOR INSTALLING THE 103514 RESISTOR
UNIT ON XRT-96 OR XRT-107 TABLES FOR OPERATION
OF THE 19 TYPE SET ON 110 VOLT 25 CYCLE CURRENT

In order to operate the 19 type set on 110 volt 25 cycle power supply, it is necessary to connect a 25 ohm resistor in series with each motor. The resistor assembly contains three resistors; two for use in the motor circuits of the printer and transmitter distributor and the other for use in the motor circuit of a 14 type reperforator which may be used in conjunction with the 19 type set.

The 103514 resistor unit consists of the following parts:

- 1 Resistor Unit (Comp.)
- 2 8185 Screws
- 2 3292 Nuts
- 2 2846 Washers
- 2 2449 Lock Washers

Installation

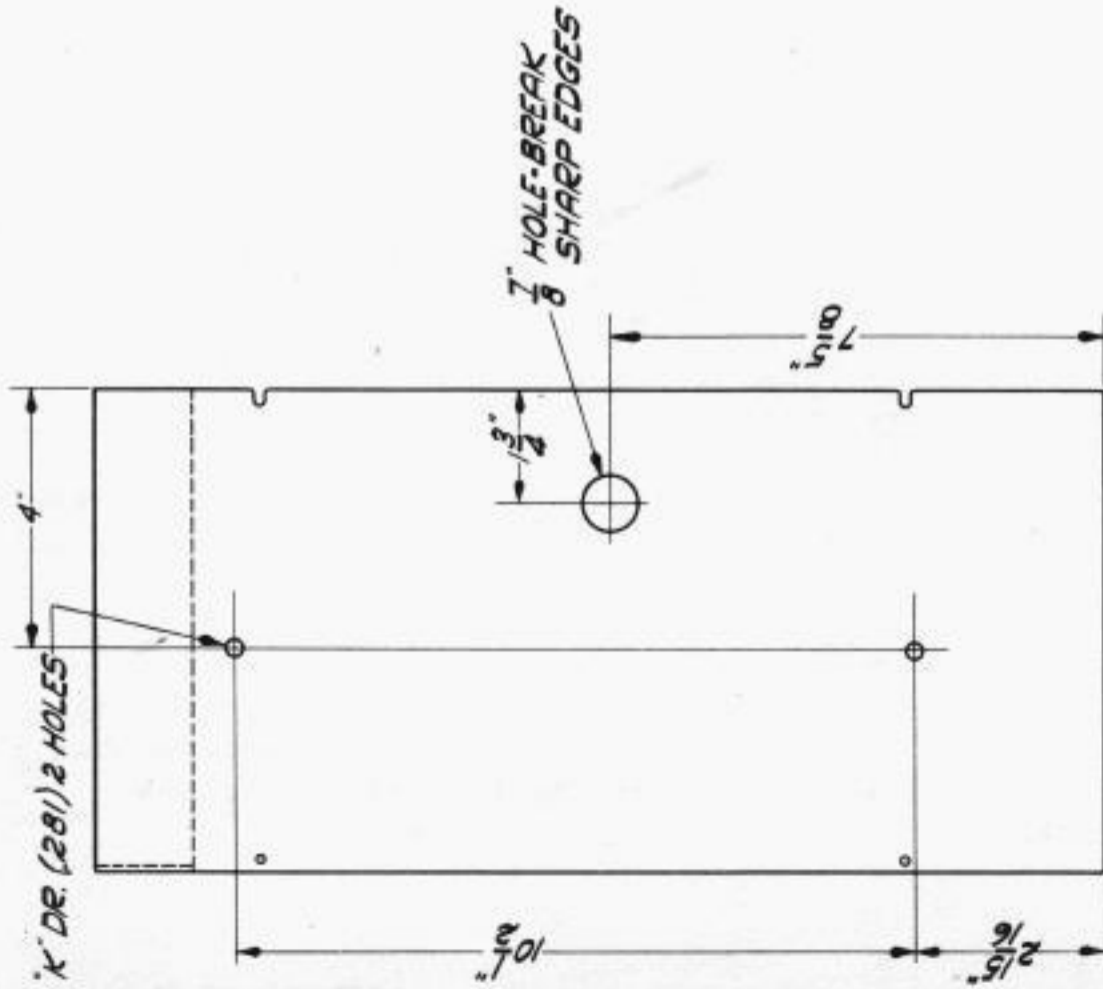
1. Remove the cover plate from the compartment above the three receptacles in the lower right corner of the cabinet. To do this, remove the two screws from the left edge of the cover plate, loosen the two screws in the right edge, and slide the plate to the left.
2. Remove the "knockout" from the cover plate.

NOTE: If there is no "knockout" in the cover plate, drill a 7/8" diameter hole as shown in Figure 1. It will also be necessary to drill two mounting holes also shown in Figure 1.

3. Mount the resistor unit to the cover plate as shown in Figure 2 using the screws, washers, lock washers, and nuts furnished.
4. From the right terminal block (A) remove the following terminal screws and the wire straps connecting them: 25 and 44; 40 and 30; 36 and 28. Discard the straps but retain the screws.
5. Place the unit on the floor beneath the terminal blocks and make connections as shown in Figure 3.

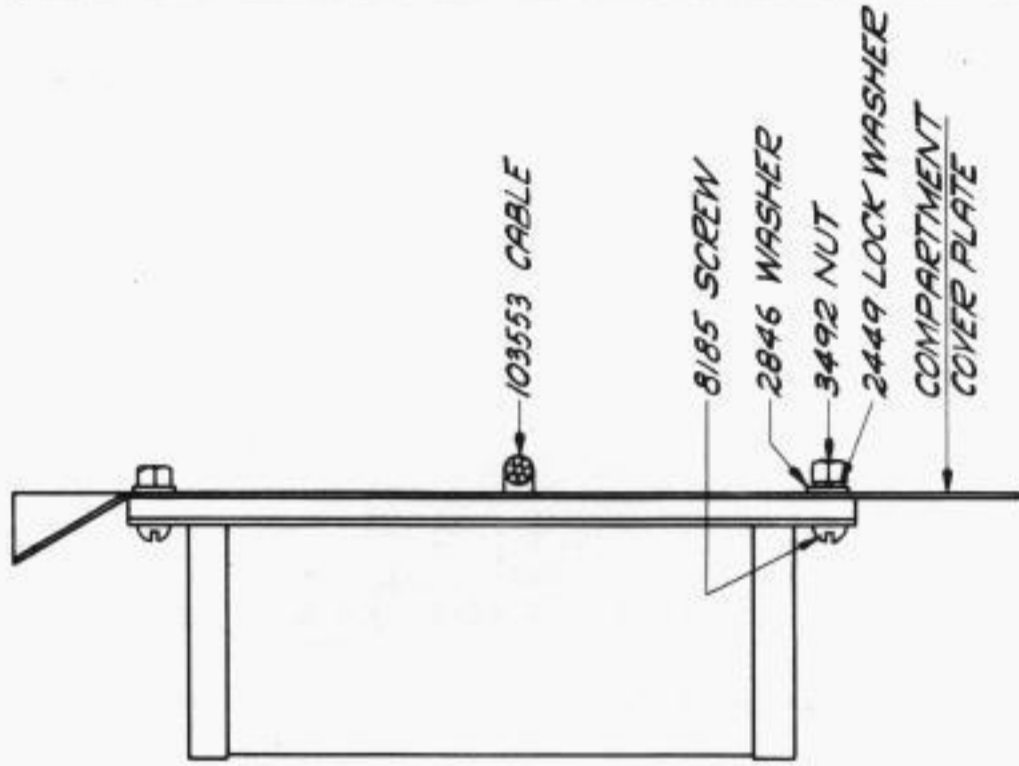
NOTE: Before replacing the compartment cover plate, make the power connections to terminals 21 and 22 of the right hand terminal block (A) if these connections are not already made.

6. Mount the compartment cover plate (with unit attached) by means of the screws previously removed. Take up the slack in the cable by pushing it to the right of the terminal blocks. Make certain that the slots in the right edge of the cover plate slide under the mounting screw heads.



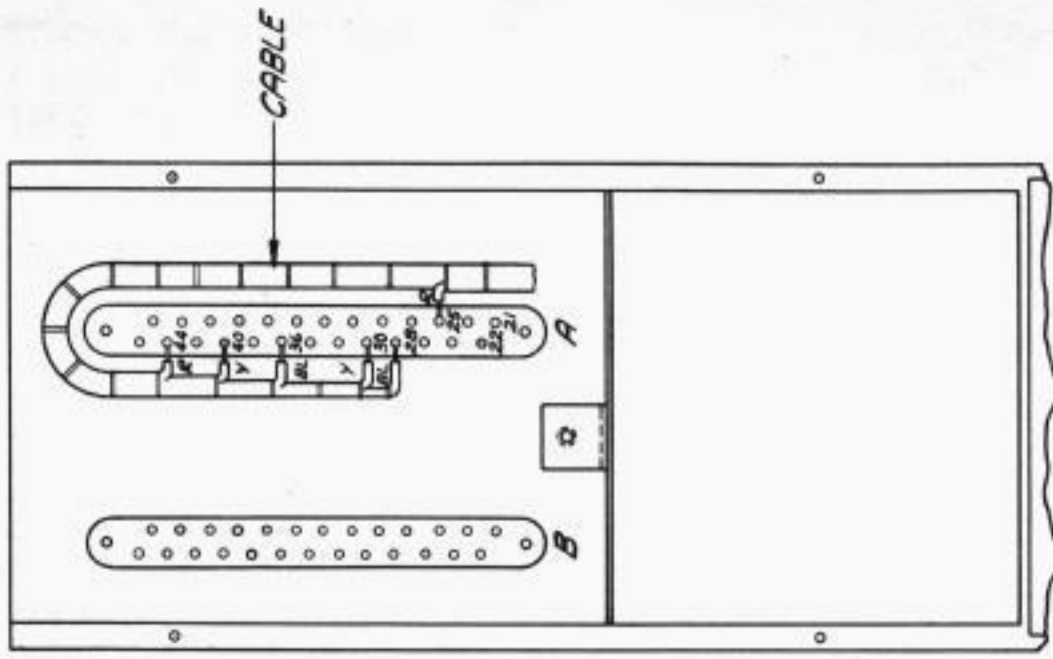
COMPARTMENT COVER PLATE

FIGURE 1



RESISTOR UNIT SHOWN MOUNTED ON COMPARTMENT COVER PLATE

FIGURE 2



TERMINAL COMPARTMENT SHOWING RESISTOR CABLE CONNECTED

FIGURE 3