

AN ANNUAL MEETING OF THE AMERICAN COLLEGE OF NURSING EDUCATION

RESOLUTIONS

RESOLUTIONS

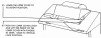
RESOLUTION	ADOPTED	RESOLUTION	ADOPTED
1. RESOLUTION	1	10. RESOLUTION	10
2. RESOLUTION	2	11. RESOLUTION	11
3. RESOLUTION	3	12. RESOLUTION	12
4. RESOLUTION	4	13. RESOLUTION	13
5. RESOLUTION	5	14. RESOLUTION	14
6. RESOLUTION	6	15. RESOLUTION	15
7. RESOLUTION	7	16. RESOLUTION	16
8. RESOLUTION	8	17. RESOLUTION	17
9. RESOLUTION	9	18. RESOLUTION	18
10. RESOLUTION	10	19. RESOLUTION	19
11. RESOLUTION	11	20. RESOLUTION	20
12. RESOLUTION	12	21. RESOLUTION	21
13. RESOLUTION	13	22. RESOLUTION	22
14. RESOLUTION	14	23. RESOLUTION	23
15. RESOLUTION	15	24. RESOLUTION	24
16. RESOLUTION	16	25. RESOLUTION	25
17. RESOLUTION	17	26. RESOLUTION	26
18. RESOLUTION	18	27. RESOLUTION	27
19. RESOLUTION	19	28. RESOLUTION	28
20. RESOLUTION	20	29. RESOLUTION	29
21. RESOLUTION	21	30. RESOLUTION	30
22. RESOLUTION	22	31. RESOLUTION	31
23. RESOLUTION	23	32. RESOLUTION	32
24. RESOLUTION	24	33. RESOLUTION	33
25. RESOLUTION	25	34. RESOLUTION	34
26. RESOLUTION	26	35. RESOLUTION	35
27. RESOLUTION	27	36. RESOLUTION	36
28. RESOLUTION	28	37. RESOLUTION	37
29. RESOLUTION	29	38. RESOLUTION	38
30. RESOLUTION	30	39. RESOLUTION	39
31. RESOLUTION	31	40. RESOLUTION	40
32. RESOLUTION	32	41. RESOLUTION	41
33. RESOLUTION	33	42. RESOLUTION	42
34. RESOLUTION	34	43. RESOLUTION	43
35. RESOLUTION	35	44. RESOLUTION	44
36. RESOLUTION	36	45. RESOLUTION	45
37. RESOLUTION	37	46. RESOLUTION	46
38. RESOLUTION	38	47. RESOLUTION	47
39. RESOLUTION	39	48. RESOLUTION	48
40. RESOLUTION	40	49. RESOLUTION	49
41. RESOLUTION	41	50. RESOLUTION	50
42. RESOLUTION	42	51. RESOLUTION	51
43. RESOLUTION	43	52. RESOLUTION	52
44. RESOLUTION	44	53. RESOLUTION	53
45. RESOLUTION	45	54. RESOLUTION	54
46. RESOLUTION	46	55. RESOLUTION	55
47. RESOLUTION	47	56. RESOLUTION	56
48. RESOLUTION	48	57. RESOLUTION	57
49. RESOLUTION	49	58. RESOLUTION	58
50. RESOLUTION	50	59. RESOLUTION	59
51. RESOLUTION	51	60. RESOLUTION	60
52. RESOLUTION	52	61. RESOLUTION	61
53. RESOLUTION	53	62. RESOLUTION	62
54. RESOLUTION	54	63. RESOLUTION	63
55. RESOLUTION	55	64. RESOLUTION	64
56. RESOLUTION	56	65. RESOLUTION	65
57. RESOLUTION	57	66. RESOLUTION	66
58. RESOLUTION	58	67. RESOLUTION	67
59. RESOLUTION	59	68. RESOLUTION	68
60. RESOLUTION	60	69. RESOLUTION	69
61. RESOLUTION	61	70. RESOLUTION	70
62. RESOLUTION	62	71. RESOLUTION	71
63. RESOLUTION	63	72. RESOLUTION	72
64. RESOLUTION	64	73. RESOLUTION	73
65. RESOLUTION	65	74. RESOLUTION	74
66. RESOLUTION	66	75. RESOLUTION	75
67. RESOLUTION	67	76. RESOLUTION	76
68. RESOLUTION	68	77. RESOLUTION	77
69. RESOLUTION	69	78. RESOLUTION	78
70. RESOLUTION	70	79. RESOLUTION	79
71. RESOLUTION	71	80. RESOLUTION	80
72. RESOLUTION	72	81. RESOLUTION	81
73. RESOLUTION	73	82. RESOLUTION	82
74. RESOLUTION	74	83. RESOLUTION	83
75. RESOLUTION	75	84. RESOLUTION	84
76. RESOLUTION	76	85. RESOLUTION	85
77. RESOLUTION	77	86. RESOLUTION	86
78. RESOLUTION	78	87. RESOLUTION	87
79. RESOLUTION	79	88. RESOLUTION	88
80. RESOLUTION	80	89. RESOLUTION	89
81. RESOLUTION	81	90. RESOLUTION	90
82. RESOLUTION	82	91. RESOLUTION	91
83. RESOLUTION	83	92. RESOLUTION	92
84. RESOLUTION	84	93. RESOLUTION	93
85. RESOLUTION	85	94. RESOLUTION	94
86. RESOLUTION	86	95. RESOLUTION	95
87. RESOLUTION	87	96. RESOLUTION	96
88. RESOLUTION	88	97. RESOLUTION	97
89. RESOLUTION	89	98. RESOLUTION	98
90. RESOLUTION	90	99. RESOLUTION	99
91. RESOLUTION	91	100. RESOLUTION	100

**1. Architecture**

1000 - Study architecture of chair



4. **ADJUSTABLE SEATING POSITIONING**



6. **ELDERLY PEOPLE AND CHILDREN**









124 Hydraulic and Fuel Test Equipment

124



**RESERVOIR:**  
 A container for the hydraulic fluid. It should be filled with the correct grade of oil.  
**PUMP:**  
 A device that creates the pressure in the hydraulic system.



**FUEL TEST RIG:**  
 A device used to measure the fuel consumption of an engine. It consists of a fuel tank, a fuel pump, a fuel filter, a fuel injector, and a fuel meter. The fuel meter measures the amount of fuel that is injected into the engine. The fuel test rig is used to measure the fuel consumption of an engine under various operating conditions.



HW 2, SECTION 17.001-10

14) **CONCRETE RETAINING WALL**

- 1. **RETAINING WALL**
- 2. **RETAINING WALL**
- 3. **RETAINING WALL**
- 4. **RETAINING WALL**
- 5. **RETAINING WALL**
- 6. **RETAINING WALL**
- 7. **RETAINING WALL**
- 8. **RETAINING WALL**
- 9. **RETAINING WALL**
- 10. **RETAINING WALL**
- 11. **RETAINING WALL**
- 12. **RETAINING WALL**
- 13. **RETAINING WALL**
- 14. **RETAINING WALL**
- 15. **RETAINING WALL**
- 16. **RETAINING WALL**
- 17. **RETAINING WALL**
- 18. **RETAINING WALL**
- 19. **RETAINING WALL**
- 20. **RETAINING WALL**



15) **CONCRETE RETAINING WALL**

- 1. **RETAINING WALL**
- 2. **RETAINING WALL**
- 3. **RETAINING WALL**
- 4. **RETAINING WALL**
- 5. **RETAINING WALL**
- 6. **RETAINING WALL**
- 7. **RETAINING WALL**
- 8. **RETAINING WALL**
- 9. **RETAINING WALL**
- 10. **RETAINING WALL**
- 11. **RETAINING WALL**
- 12. **RETAINING WALL**
- 13. **RETAINING WALL**
- 14. **RETAINING WALL**
- 15. **RETAINING WALL**
- 16. **RETAINING WALL**
- 17. **RETAINING WALL**
- 18. **RETAINING WALL**
- 19. **RETAINING WALL**
- 20. **RETAINING WALL**

- 1. **RETAINING WALL**
- 2. **RETAINING WALL**
- 3. **RETAINING WALL**
- 4. **RETAINING WALL**
- 5. **RETAINING WALL**
- 6. **RETAINING WALL**
- 7. **RETAINING WALL**
- 8. **RETAINING WALL**
- 9. **RETAINING WALL**
- 10. **RETAINING WALL**
- 11. **RETAINING WALL**
- 12. **RETAINING WALL**
- 13. **RETAINING WALL**
- 14. **RETAINING WALL**
- 15. **RETAINING WALL**
- 16. **RETAINING WALL**
- 17. **RETAINING WALL**
- 18. **RETAINING WALL**
- 19. **RETAINING WALL**
- 20. **RETAINING WALL**



1.27. Working drawings (cont.)

65. **CONSTRUCTION PROVISIONS**

- Notes:**  
 1. The structure shall be constructed in accordance with the provisions of IS: 456-1978.  
 2. The structure shall be constructed in accordance with the provisions of IS: 456-1978.  
 3. The structure shall be constructed in accordance with the provisions of IS: 456-1978.



66. **CONSTRUCTION PROVISIONS**

- Notes:**  
 1. The structure shall be constructed in accordance with the provisions of IS: 456-1978.  
 2. The structure shall be constructed in accordance with the provisions of IS: 456-1978.  
 3. The structure shall be constructed in accordance with the provisions of IS: 456-1978.



67. **CONSTRUCTION PROVISIONS**

- Notes:**  
 1. The structure shall be constructed in accordance with the provisions of IS: 456-1978.  
 2. The structure shall be constructed in accordance with the provisions of IS: 456-1978.  
 3. The structure shall be constructed in accordance with the provisions of IS: 456-1978.



68. **CONSTRUCTION PROVISIONS**

- Notes:**  
 1. The structure shall be constructed in accordance with the provisions of IS: 456-1978.  
 2. The structure shall be constructed in accordance with the provisions of IS: 456-1978.  
 3. The structure shall be constructed in accordance with the provisions of IS: 456-1978.



FIGURE 10.10: Plant and Animal Cells



**10.10.1: Plant Cell Structure**

Plant cells are eukaryotic cells that have a cell wall, a large central vacuole, and chloroplasts. They are typically rectangular in shape. The cell wall is made of cellulose and provides structural support. The central vacuole is a large, fluid-filled sac that helps maintain turgor pressure. Chloroplasts are organelles that perform photosynthesis.

Other organelles found in plant cells include the nucleus, mitochondria, and Golgi apparatus.

**10.10.2: Animal Cell Structure**

Animal cells are eukaryotic cells that lack a cell wall and a large central vacuole. They are typically rounded in shape. The cell membrane is the outer boundary of the cell. The nucleus is a large, spherical organelle that contains genetic material. Mitochondria are organelles that produce energy for the cell. The Golgi apparatus is a series of stacked, flattened sacs that process and transport proteins.

**2.21** **THE STRUCTURE**  
**INTERNAL STRUCTURE**



**ROOFING AND INSULATION**  
The roof is made of a concrete slab with a layer of insulation on top. The insulation is made of a material that does not conduct heat. This is to prevent the heat from the sun from entering the building. The roof is also made of a material that does not absorb heat. This is to prevent the roof from getting too hot. The roof is also made of a material that does not get damaged by the sun. This is to prevent the roof from getting old and needing to be replaced.



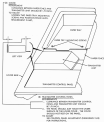
**CONCRETE SLAB**  
The concrete slab is made of concrete. Concrete is a material that is made of cement, sand, and gravel. Concrete is a material that is strong and durable. Concrete is a material that does not get damaged by the sun. Concrete is a material that does not absorb heat. Concrete is a material that does not conduct heat. Concrete is a material that does not get old and needing to be replaced.

**WALLS**  
The walls are made of a material that does not absorb heat. The walls are made of a material that does not conduct heat. The walls are made of a material that does not get damaged by the sun. The walls are made of a material that does not get old and needing to be replaced.

**FLOORING**  
The flooring is made of a material that does not absorb heat. The flooring is made of a material that does not conduct heat. The flooring is made of a material that does not get damaged by the sun. The flooring is made of a material that does not get old and needing to be replaced.

**FOUNDATION**  
The foundation is made of a material that does not absorb heat. The foundation is made of a material that does not conduct heat. The foundation is made of a material that does not get damaged by the sun. The foundation is made of a material that does not get old and needing to be replaced.

FIG. 1.2. **Structural Reinforcement Details (cont.)**









1.10. Green House (Cold Water Supply/Hot)

1.10.1. Green House (Cold Water Supply/Hot)

1. Cold Water Supply/Hot
2. Hot Water Supply/Hot
3. Cold Water Supply/Hot
4. Hot Water Supply/Hot

1.10.2. Green House (Cold Water Supply/Hot)

1. Cold Water Supply/Hot

2. Hot Water Supply/Hot

3. Cold Water Supply/Hot

4. Hot Water Supply/Hot

