

TELETYPE UNIT

# TELETYPE

## PRINTING TELEGRAPH SYSTEMS

TELETYPE UNIT

GENERAL DESCRIPTION

UNIT

TELETYPE UNIT

MODEL 1500-1000-1000-1000-1000

UNIT, 1960

TELETYPE

TELETYPE UNIT

TELETYPE UNIT

UNIT, 1960

TELETYPE UNIT

# TELETYPE

PRINTING TELEGRAPH SYSTEM

UNIT 100

TELETYPE UNIT  
UNIT 100

UNIT 100  
UNIT 100  
UNIT 100  
UNIT 100

TELETYPE

UNIT 100  
UNIT 100  
UNIT 100  
UNIT 100

## LIST OF RECEIPTS

1911, 1912

DATE RECEIVED	AMOUNT RECEIVED
1911	100.00
1912	100.00
1913	100.00
1914	100.00
1915	100.00
1916	100.00
1917	100.00
1918	100.00
1919	100.00
1920	100.00
1921	100.00
1922	100.00
1923	100.00
1924	100.00
1925	100.00
1926	100.00
1927	100.00
1928	100.00
1929	100.00
1930	100.00
1931	100.00
1932	100.00
1933	100.00
1934	100.00
1935	100.00
1936	100.00
1937	100.00
1938	100.00
1939	100.00
1940	100.00
1941	100.00
1942	100.00
1943	100.00
1944	100.00
1945	100.00
1946	100.00
1947	100.00
1948	100.00
1949	100.00
1950	100.00
1951	100.00
1952	100.00
1953	100.00
1954	100.00
1955	100.00
1956	100.00
1957	100.00
1958	100.00
1959	100.00
1960	100.00
1961	100.00
1962	100.00
1963	100.00
1964	100.00
1965	100.00
1966	100.00
1967	100.00
1968	100.00
1969	100.00
1970	100.00
1971	100.00
1972	100.00
1973	100.00
1974	100.00
1975	100.00
1976	100.00
1977	100.00
1978	100.00
1979	100.00
1980	100.00
1981	100.00
1982	100.00
1983	100.00
1984	100.00
1985	100.00
1986	100.00
1987	100.00
1988	100.00
1989	100.00
1990	100.00
1991	100.00
1992	100.00
1993	100.00
1994	100.00
1995	100.00
1996	100.00
1997	100.00
1998	100.00
1999	100.00
2000	100.00
2001	100.00
2002	100.00
2003	100.00
2004	100.00
2005	100.00
2006	100.00
2007	100.00
2008	100.00
2009	100.00
2010	100.00
2011	100.00
2012	100.00
2013	100.00
2014	100.00
2015	100.00
2016	100.00
2017	100.00
2018	100.00
2019	100.00
2020	100.00
2021	100.00
2022	100.00
2023	100.00
2024	100.00
2025	100.00
2026	100.00
2027	100.00
2028	100.00
2029	100.00
2030	100.00
2031	100.00
2032	100.00
2033	100.00
2034	100.00
2035	100.00
2036	100.00
2037	100.00
2038	100.00
2039	100.00
2040	100.00
2041	100.00
2042	100.00
2043	100.00
2044	100.00
2045	100.00
2046	100.00
2047	100.00
2048	100.00
2049	100.00
2050	100.00
2051	100.00
2052	100.00
2053	100.00
2054	100.00
2055	100.00
2056	100.00
2057	100.00
2058	100.00
2059	100.00
2060	100.00
2061	100.00
2062	100.00
2063	100.00
2064	100.00
2065	100.00
2066	100.00
2067	100.00
2068	100.00
2069	100.00
2070	100.00
2071	100.00
2072	100.00
2073	100.00
2074	100.00
2075	100.00
2076	100.00
2077	100.00
2078	100.00
2079	100.00
2080	100.00
2081	100.00
2082	100.00
2083	100.00
2084	100.00
2085	100.00
2086	100.00
2087	100.00
2088	100.00
2089	100.00
2090	100.00
2091	100.00
2092	100.00
2093	100.00
2094	100.00
2095	100.00
2096	100.00
2097	100.00
2098	100.00
2099	100.00
2100	100.00

The above receipts are the property of the  
 United States Government, and are  
 not to be used for any other purpose.

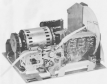


FIGURE 1. Mechanical assembly of the motor.

**TABLE OF CONTENTS**  
**CONTENTS - TABLE OF CONTENTS**

<b>CONTENTS</b>	<b>PAGE</b>
<b>I. INTRODUCTION</b> .....	<b>1-1</b>
a. Purpose	1-1
b. Scope	1-1
<b>II. DEFINITIONS</b> .....	<b>1-2</b>
a. Accounting	1-2
b. Financial Statements	1-2
c. Financial Statements	1-2

**CONTENTS - TABLE OF CONTENTS**

<b>I. INTRODUCTION</b> .....	<b>1-1</b>
<b>II. ACCOUNTING POLICY</b> .....	<b>1-2</b>
a. Basis of Accounting	1-2
b. Accounting Period	1-2
c. Accounting Method	1-2
d. Accounting Method	1-2
e. Accounting Method	1-2
f. Accounting Method	1-2
g. Accounting Method	1-2
<b>III. FINANCIAL STATEMENTS</b> .....	<b>1-3</b>
<b>IV. FINANCIAL STATEMENTS</b> .....	<b>1-3</b>

**CONTENTS - TABLE OF CONTENTS (CONT.)**











## REFERENCES

- BRIDGES, R. B. 1975. *Principles of Plant Ecology*. New York: Wiley.
- BRIDGES, R. B. 1982. *Ecology of Plants and Animals*. New York: Wiley.
- BRIDGES, R. B. 1983. *Ecology of Plants and Animals*. New York: Wiley.

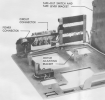


FIGURE 1. 8400

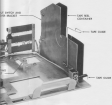


Figure 1. 100



FIGURE 4. RECONSTRUCTION AND

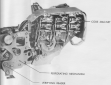


FIG. 2. REINFORCING CORE

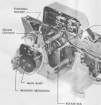
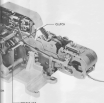


FIGURE 1. ROTATIONAL DRIVE ASSEMBLY



ANTENNAE

LATERAL ORNAMENT

FIGURE 1. *Pieris brassicae* (Pieris)



SEVEN MILLION  
COP-4000 SERIES



FOR MORE INFORMATION



FIGURE 1. MOTOR UNIT



FIGURE 1. *Quercus alba*



FIGURE 2. *Quercus alba*



FIGURE 11. ASSEMBLY

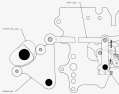


FIGURE 11. VALVE AND ACTUATOR

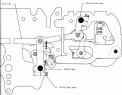


FIGURE 11.10. VALVE AND ACTUATOR



FIGURE 10. MECHANICAL LINKAGE SYSTEM

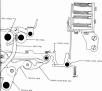


FIGURE 11. MECHANICAL ASSEMBLY



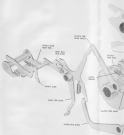


FIGURE 10. ANATOMY OF THE HAND AND FOREARM





