

CS 13 6/29/39

Bulletin No. 1015

Issue 2

July, 1939

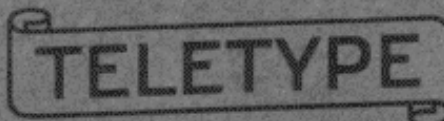
TELETYPE

PRINTING TELEGRAPH SYSTEMS

PARTS

KEYBOARD AND RECEIVER DISTRIBUTOR

(MODEL 12)



CORPORATION

SUBSIDIARY OF

Western Electric Company

CHICAGO, U.S.A.

TELETYPE

PRINTING TELEGRAPH SYSTEMS

PARTS
KEYBOARD AND RECEIVER DISTRIBUTOR
(MODEL 12)

BELL SYSTEM NOTE:

When ordering parts from this Bulletin, each number should be followed by the letter B without parentheses, in order to indicate the item as one to be secured from the Teletype Corporation.

TELETYPE

CORPORATION

SUBSIDIARY OF

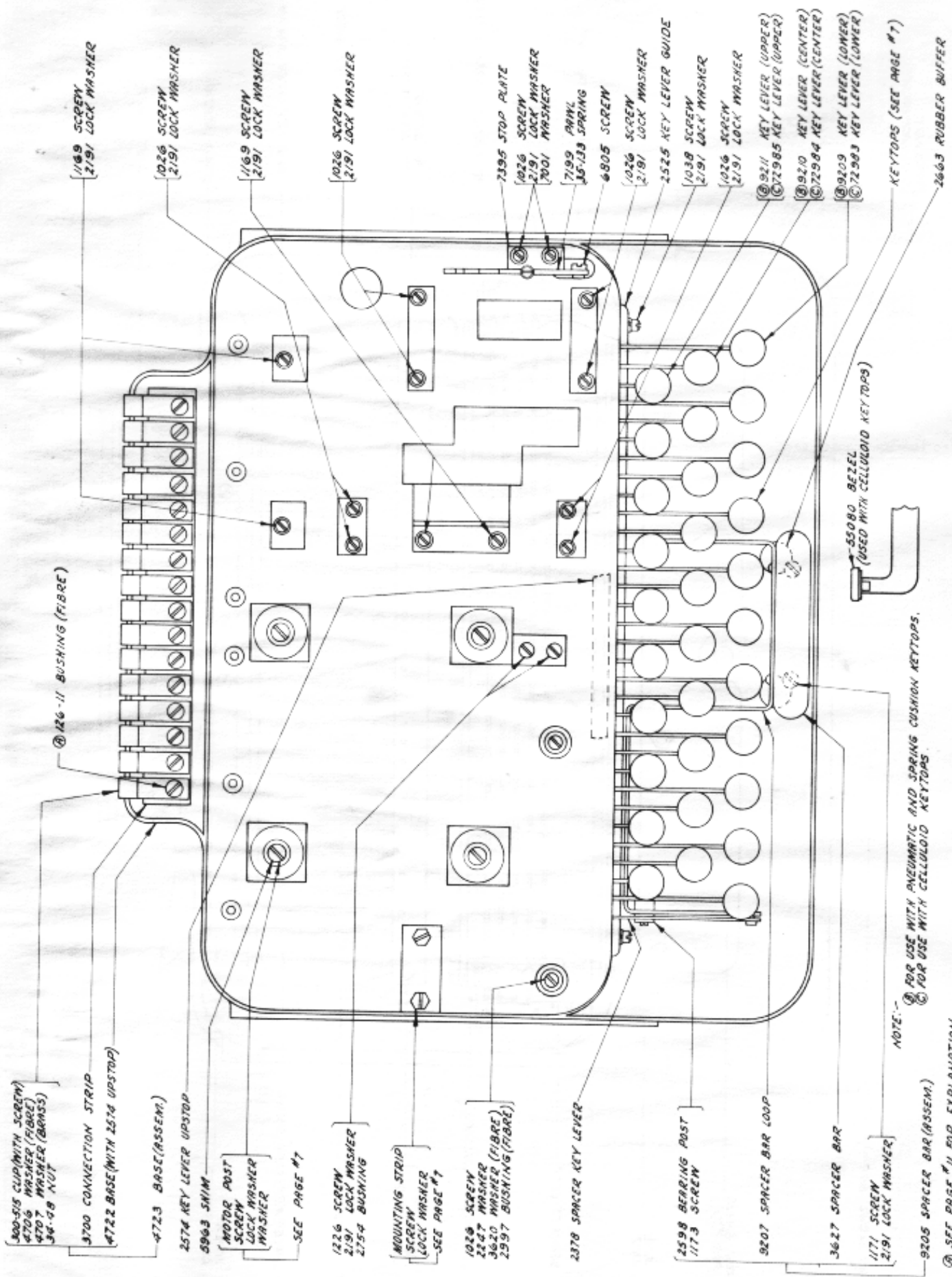
Western Electric Company

CHICAGO, U.S.A.

ALPHABETICAL INDEX

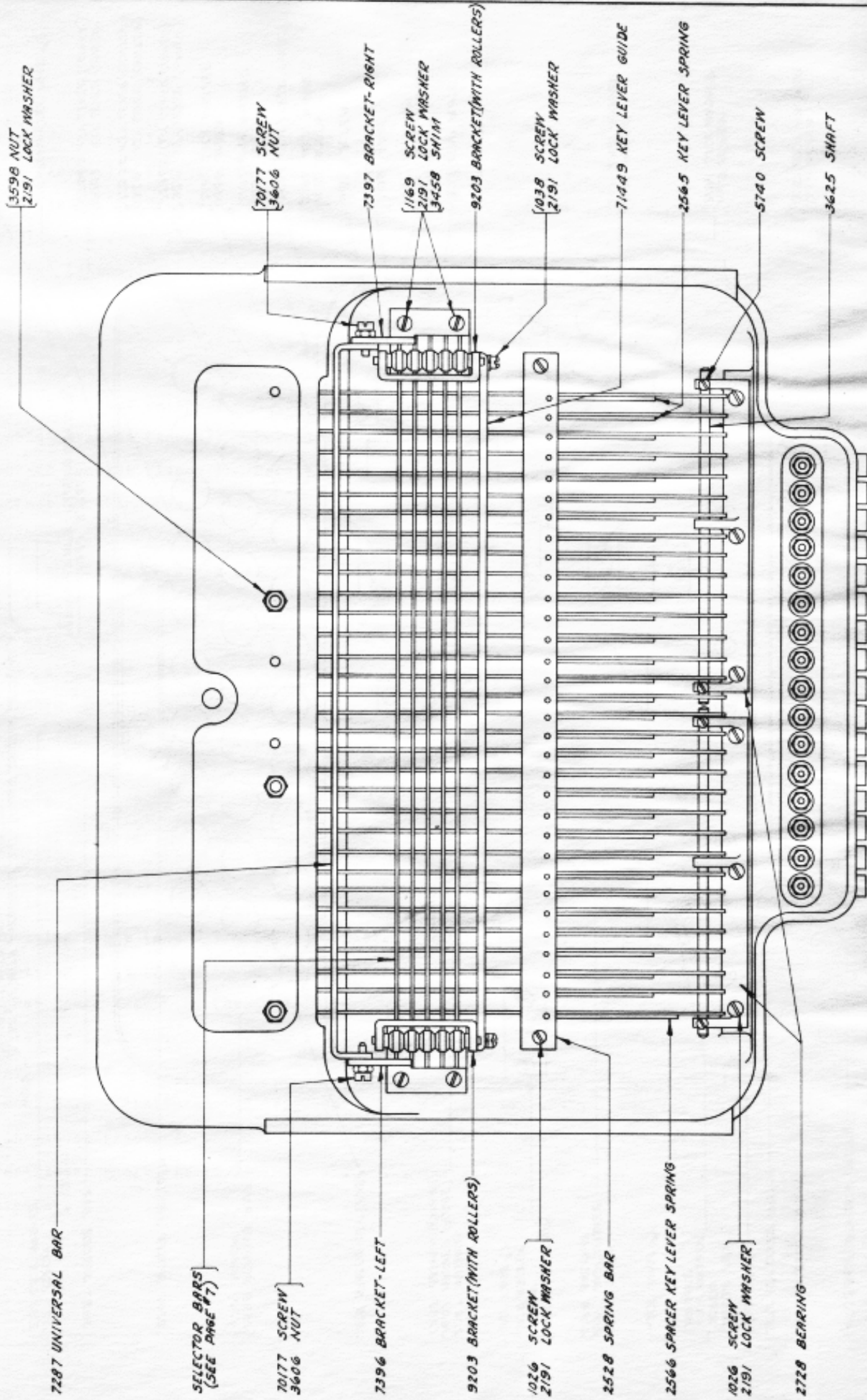
	Page
Base (Assem.) - Keyboard Distributor - Top View	1
Base (Assem.) - Keyboard Distributor - Bottom View	2
Base (Assem.) - Receiving Distributor	6
Bezel	1
Bracket (Assem.) - Rear	3
Brush - Governor	8
Brush Holder Bracket	8
Cables	2,6
Contact Bracket (Assem.) - Governor	9
Contact Bracket (Assem.) - Keyboard	3
Contact Bracket (Assem.) - Receiver	7
Contact Mounting (Assem.)	4
Governors (Comp.)	8,9
Governor Contact Bracket (Assem.)	9
Key Levers	1
Key Lever Springs	2
Keytops	7
Keyboard Base	1,2
Magnet (Assem.)	4
Motors	10
Motor Mounting Data	7
Notes of Explanation	11
Numerical Index	12
Receiver Base	6
Receiving Shaft (Assem.) - Keyboard Distributor	3
Receiving Shaft (Assem.) - Receiving Distributor	7
Repeat Space Mechanism (Assem.)	5
Resistors	5
Selector Bars	7
Spacer Bars - "Letters" and "Figures"	5
Transmitter (Assem.)	4
Transmitter Shaft (Assem.)	3
Targets	8

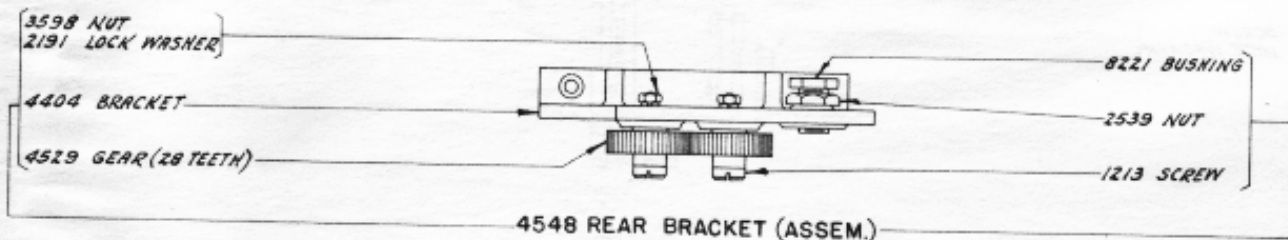
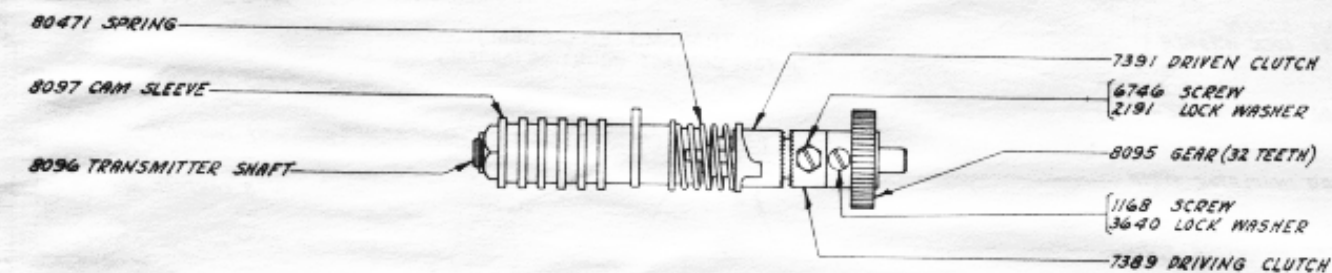
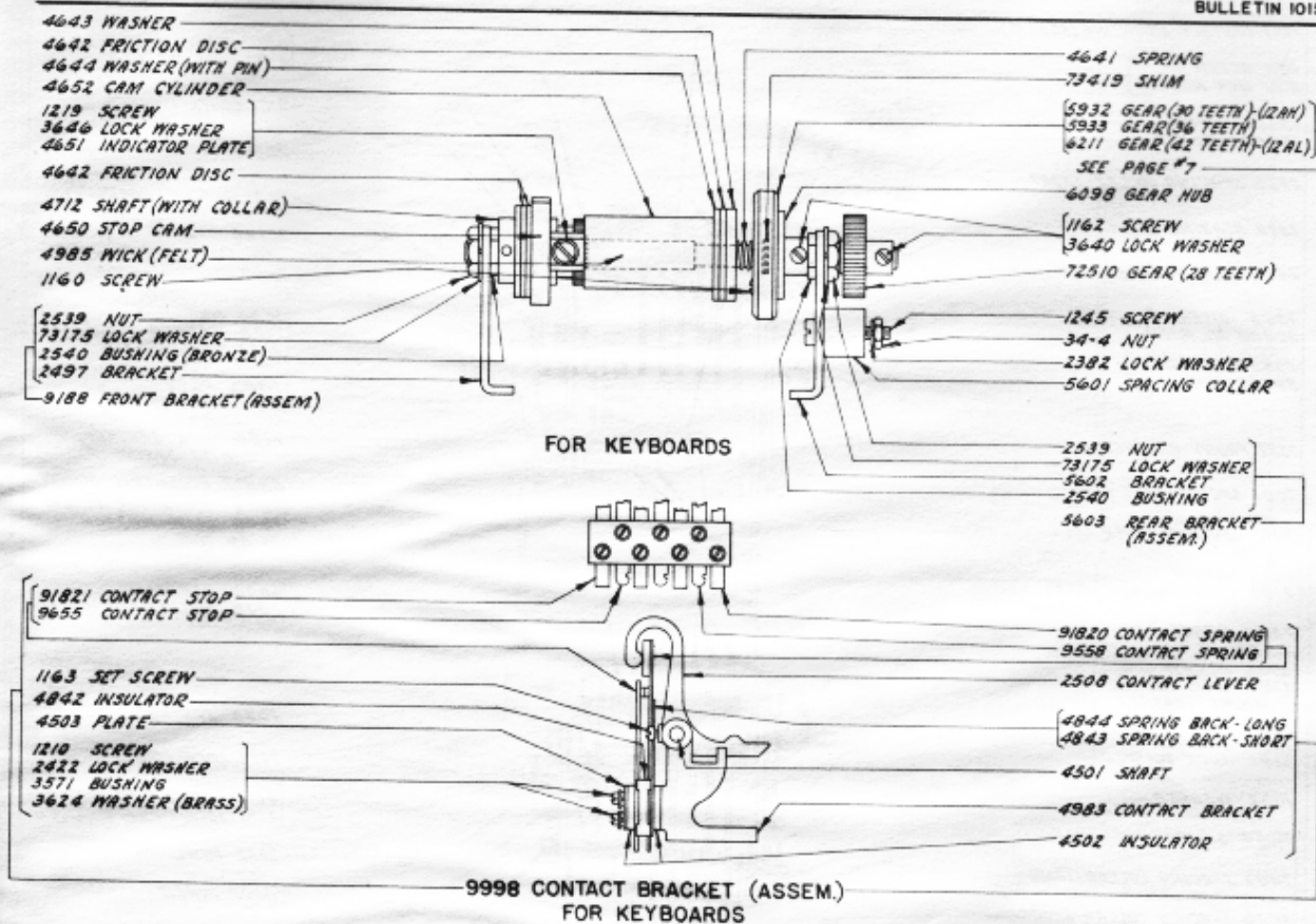
NOTE: This Bulletin is available from this Bulletin Board in order to be secured.



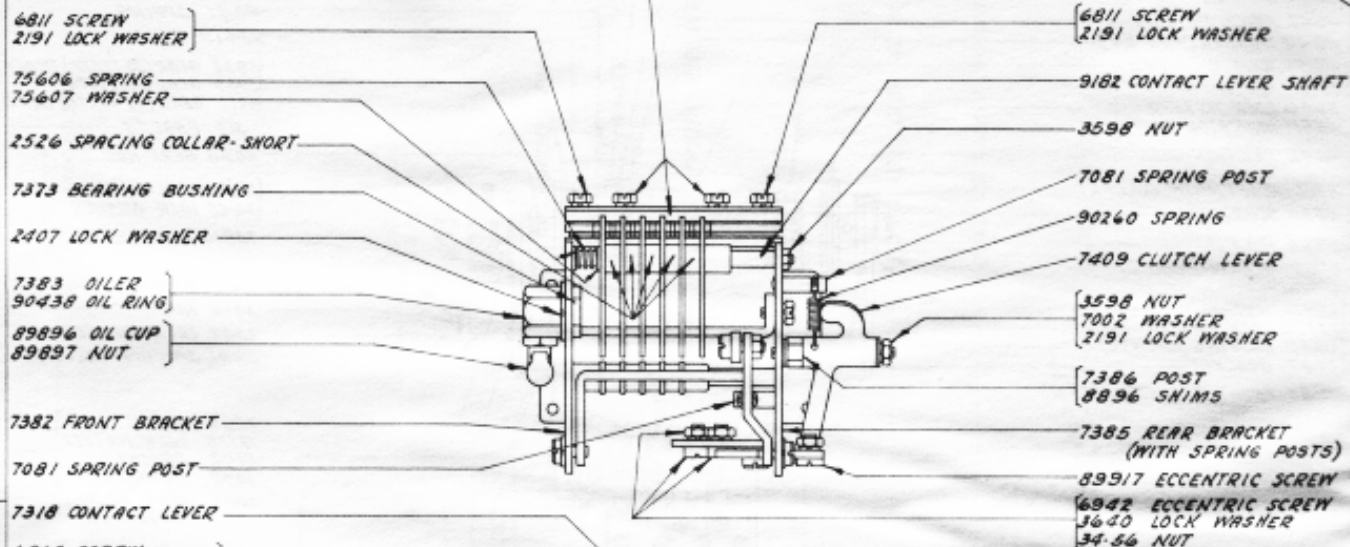
NOTE:—
 (A) FOR USE WITH PNEUMATIC AND SPRING CUSHION KEYTOPS.
 (B) FOR USE WITH CELLOID KEYTOPS.

(C) SEE PAGE #11 FOR EXPLANATION





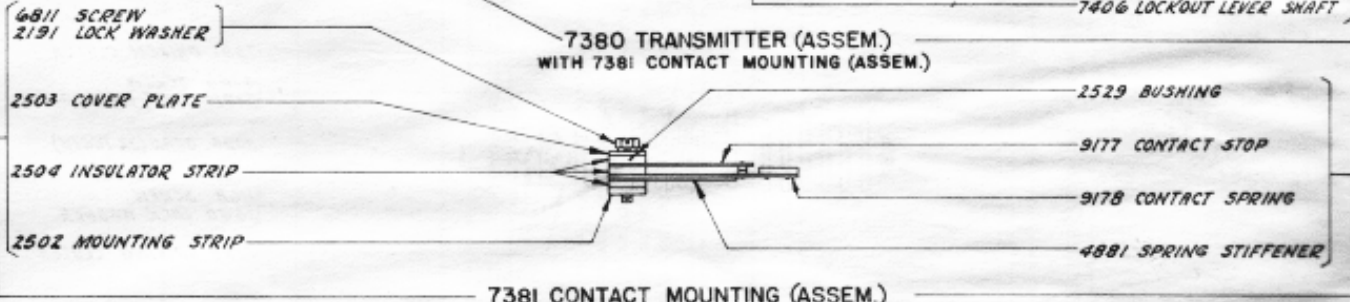
7381 CONTACT MOUNTING (ASSEM.)



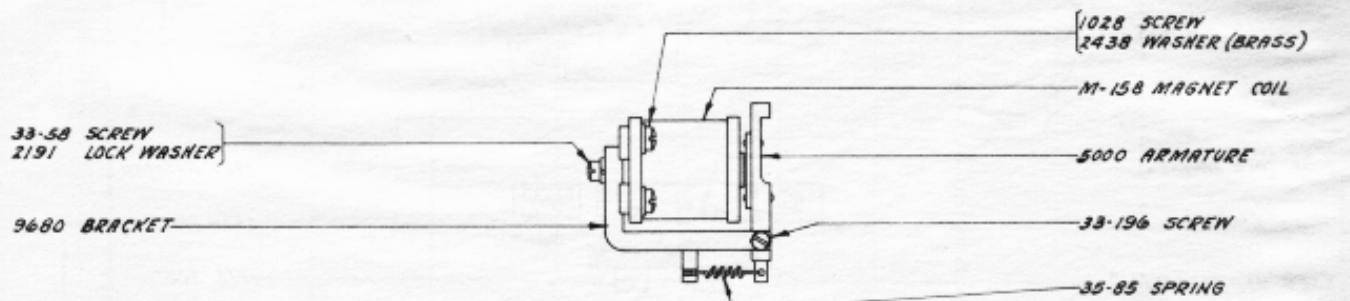
- 6811 SCREW
- 2191 LOCK WASHER
- 75606 SPRING
- 75607 WASHER
- 2526 SPACING COLLAR-SHORT
- 7373 BEARING BUSHING
- 2407 LOCK WASHER
- 7383 OILER
- 90438 OIL RING
- 89896 OIL CUP
- 89897 NUT
- 7382 FRONT BRACKET
- 7081 SPRING POST
- 7318 CONTACT LEVER
- 6814 SCREW
- 2191 LOCK WASHER
- 7387 BRACE
- 6746 SCREW
- 2191 LOCK WASHER
- 41663 WASHER
- 3598 NUT
- 7002 WASHER
- 2191 LOCK WASHER
- 7002 WASHER
- 7654 SHIM
- 7407 SPACING COLLAR-LONG
- 2526 SPACING COLLAR-SHORT
- 7404 LOCKOUT LEVER

- 6811 SCREW
- 2191 LOCK WASHER
- 9182 CONTACT LEVER SHAFT
- 3598 NUT
- 7081 SPRING POST
- 90260 SPRING
- 7409 CLUTCH LEVER
- 3598 NUT
- 7002 WASHER
- 2191 LOCK WASHER
- 7386 POST
- 8896 SHIMS
- 7385 REAR BRACKET (WITH SPRING POSTS)
- 89917 ECCENTRIC SCREW
- 6942 ECCENTRIC SCREW
- 3640 LOCK WASHER
- 34-56 NUT
- 6800 SCREW
- 7378 ROLLER
- 3598 NUT
- 2623 SPRING
- 7377 LOCK LOOP
- 6814 SCREW
- 2191 LOCK WASHER
- 7032 PAWL
- 6805 SCREW
- 3598 NUT
- 7002 WASHER
- 2191 LOCK WASHER
- 7002 WASHER
- 7406 LOCKOUT LEVER SHAFT

7380 TRANSMITTER (ASSEM.)
WITH 7381 CONTACT MOUNTING (ASSEM.)



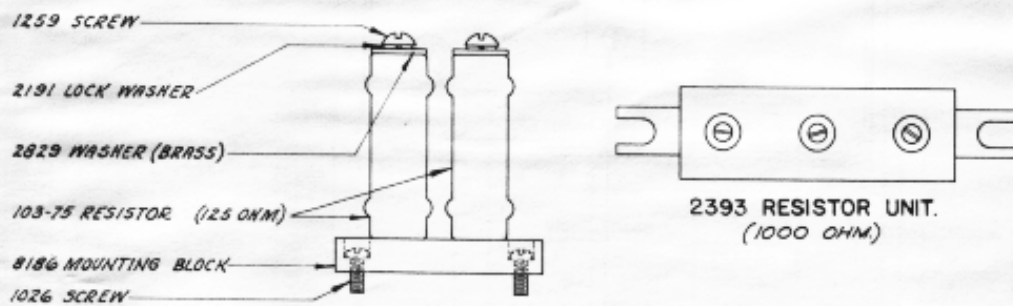
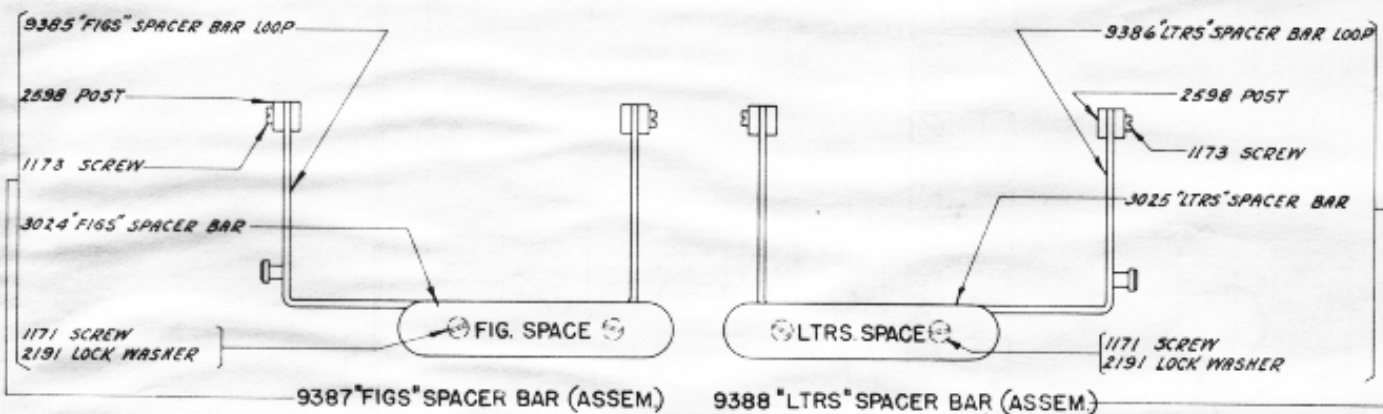
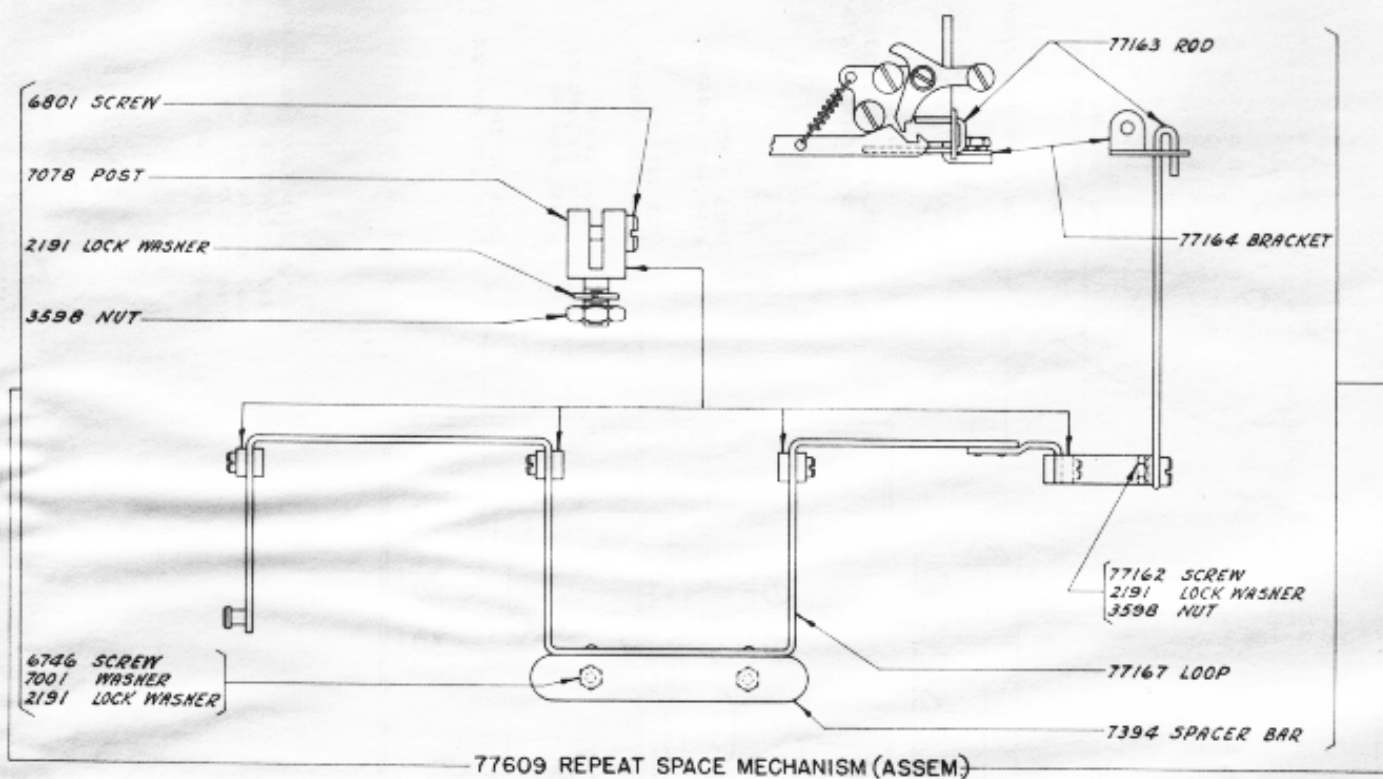
7381 CONTACT MOUNTING (ASSEM.)



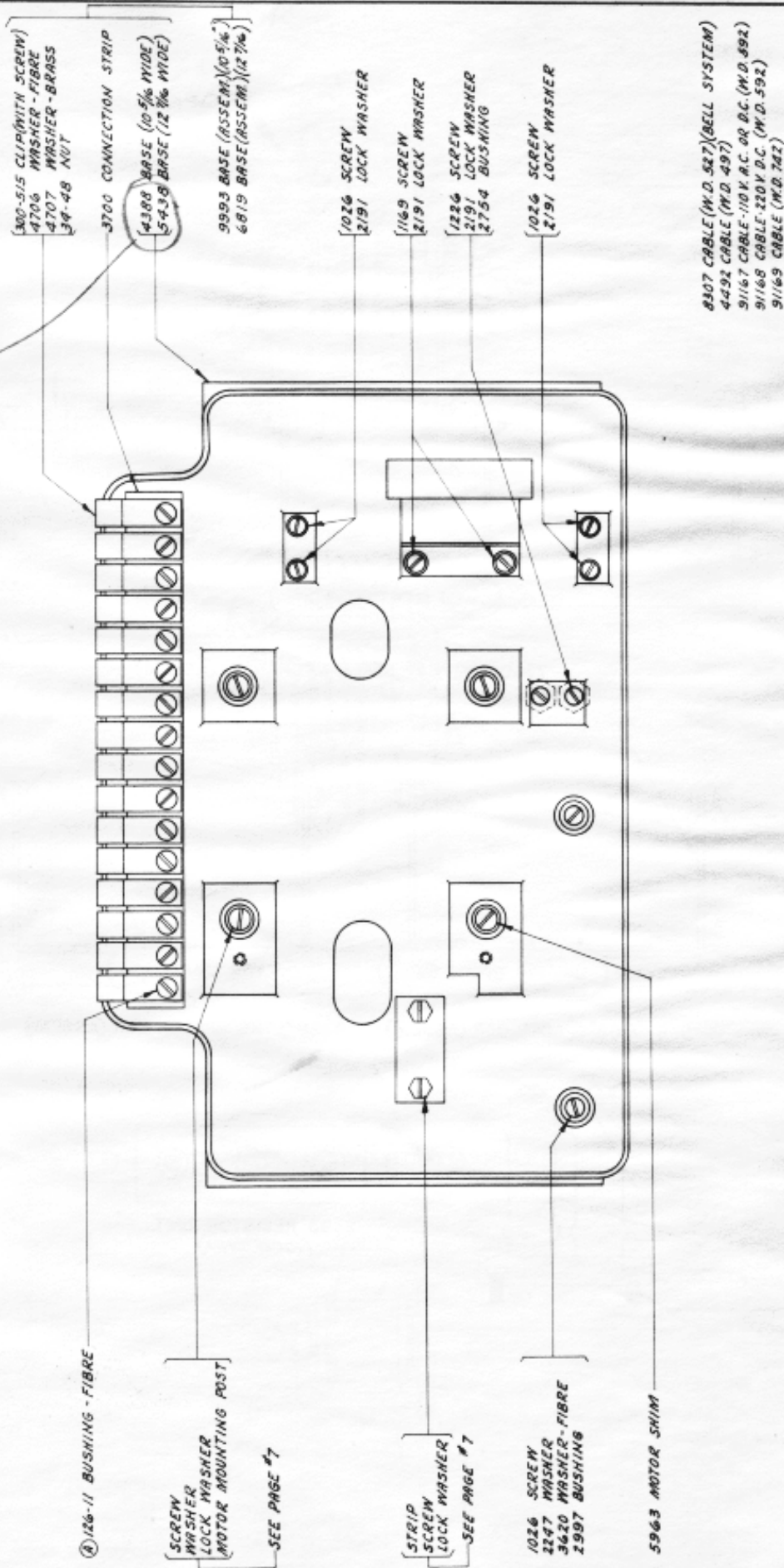
- 33-58 SCREW
- 2191 LOCK WASHER
- 9680 BRACKET

- 1028 SCREW
- 2438 WASHER (BRASS)
- M-158 MAGNET COIL
- 5000 ARMATURE
- 33-196 SCREW
- 35-85 SPRING

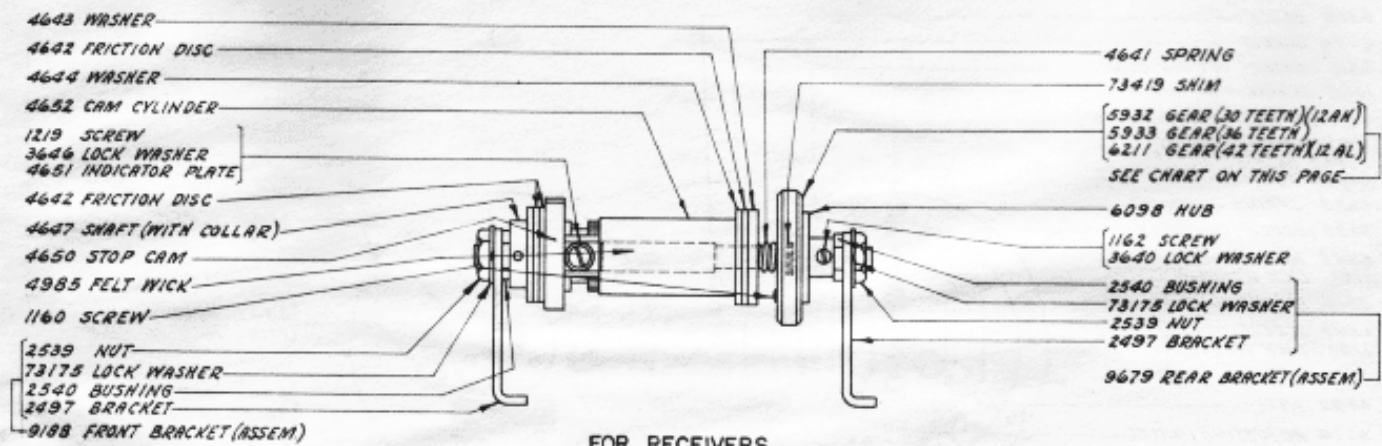
(A) (B) SEE PAGE #11 FOR NOTES OF EXPLANATION



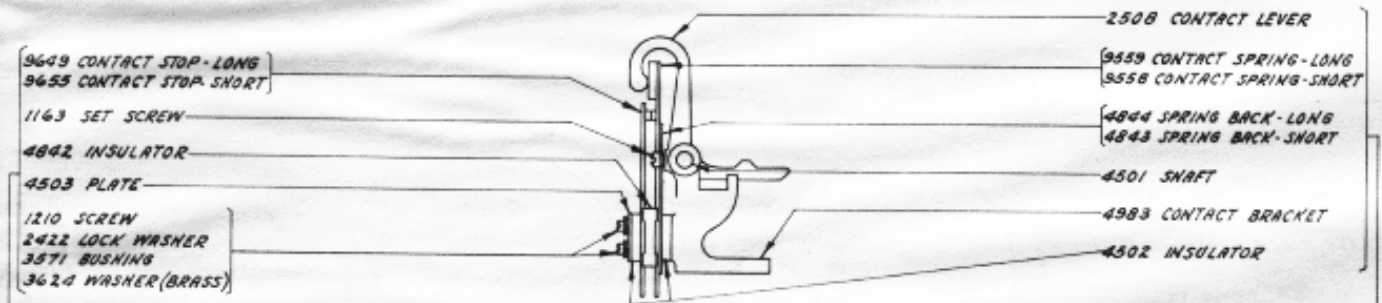
Disc scrapped & numbers cancelled - ASB 12-5-46



SEE PAGE #11 FOR EXPLANATION



FOR RECEIVERS



9995 CONTACT BRACKET (ASSEM.)
FOR RECEIVERS

MOTOR MOUNTING DATA

SELECTOR BARS	
NO. STAMPED ON BAR	CATALOG NUMBER
1E	3016
2E	3017
3E	3018
4E	3019
5E	3020

NO. OF TEETH IN GEAR	30 TEETH		36 TEETH		42 TEETH	
	NO. REQ.	NO. REQ.	NO. REQ.	NO. REQ.	NO. REQ.	NO. REQ.
MOTOR POST	—	—	5928	4	5928	8
MOTOR SCREW	33-344	4	1193	4	1245	4
MOTOR WASHER	3438	4	3438	4	3438	4
MOTOR LOCK WASHER	2669	4	2669	4	2669	4
BRUSH BRKT. MTG. STRIP	—	—	6212	1	6212	2
BRUSH BRKT. SCREW	1029	2	6811	2	6811	2
BRUSH BRKT. WASHER	2247	2	2247	2	2247	2
BRUSH BRKT. L.W.	2191	2	2191	2	2191	2

SELECTOR BARS	
NO. STAMPED ON BAR	CATALOG NUMBER
1	2431
2	2432
3	2433
4	2434
5	2435

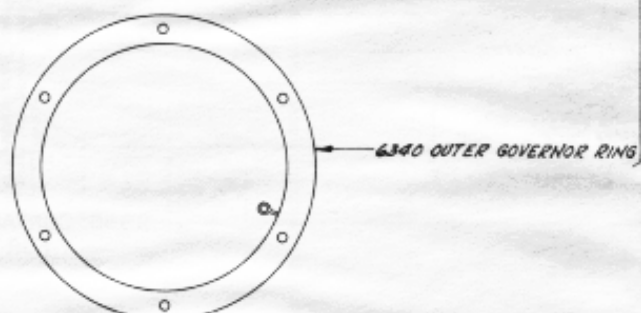
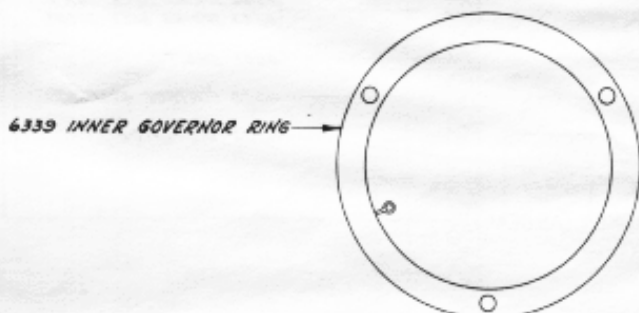
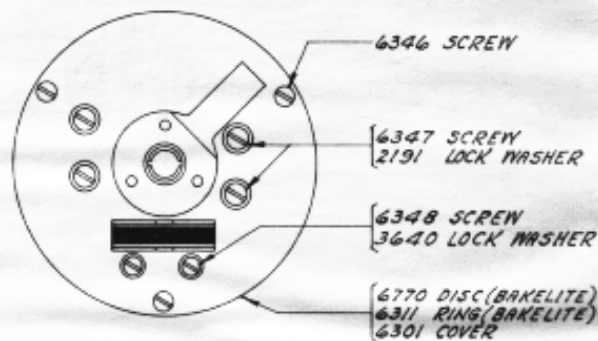
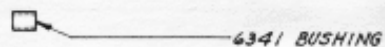
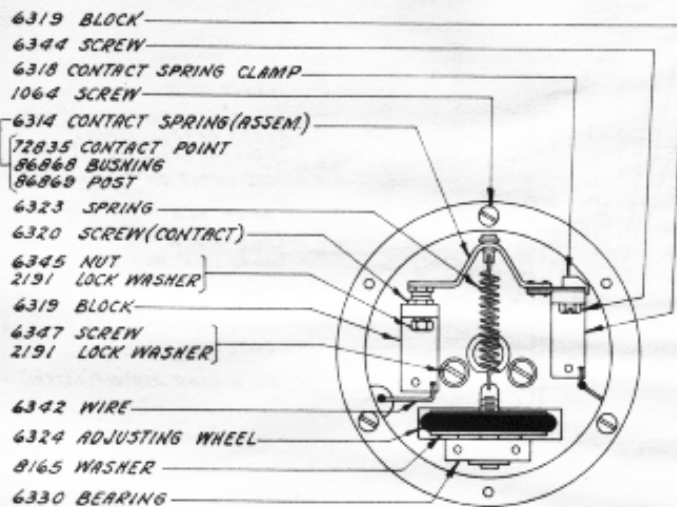
KEYTOPS

KEYTOP DESCRIPTION	PNEUMATIC	SPRING CUSHION	CELLULOID
	CATALOG NO.	CATALOG NO.	CATALOG NO.
A -	3054	78946	72031
B ?	3055	78947	72032
B 5/8	72705	78986	
C :	3056	78948	72033
C 1/8	71995	78984	
D \$	3057	78949	72034
E 3	3058	78950	72035
F	3059	78951	72826
F 1/4	71053	78982	
G 8	3080	78952	72037
H £	3061	78953	72038
H #	8255	78981	
H STOP	82274	82607	
I 8	3062	78954	72039

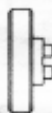
KEYTOP DESCRIPTION	PNEUMATIC	SPRING CUSHION	CELLULOID
	CATALOG NO.	CATALOG NO.	CATALOG NO.
J *	3063	78955	72827
J .	75691	78993	
J 5GL	7640		
K (3064	78956	72041
K 1/2	72707	78988	
L)	3065	78957	72042
L 3/4	71057	78983	
M .	3066	78958	72824
N .	3067	78959	72830
N 7/8	72706	78987	
O 9	3068	78960	72045
P 0	3069	78961	72046
Q	3070	78962	72047
R 4	3071	78963	72048

KEYTOP DESCRIPTION	PNEUMATIC	SPRING CUSHION	CELLULOID
	CATALOG NO.	CATALOG NO.	CATALOG NO.
S BELL	8177	78980	
S #	3072		72828
T 5	3073	78964	72050
U 7	3074	78965	72051
V ;	3075	78966	72052
V 3/8	72704	78985	
W 2	3076	78967	72053
X /	3077	78968	72054
Y 6	3078	78969	72055
Z "	3079	78970	72056
FIGS.	3081	78972	72057
BLANK	3080	78971	72061
LTRS.	3082	78973	72058
LINE FEED	3578	78978	73152
CAR. RET.	3573	78976	73151

NOTE: FOR NUMBERS OF SETS OF KEYTOPS REFER TO BULLETIN 1008, ISSUE 3.



THESE GOVERNOR RINGS ARE MADE OVER-SIZE AND CAN BE USED FOR REPLACEMENT ONLY AT POINTS WHERE FACILITIES ARE AVAILABLE FOR TURNING THEM DOWN AFTER RINGS HAVE BEEN ASSEMBLED IN GOVERNOR.

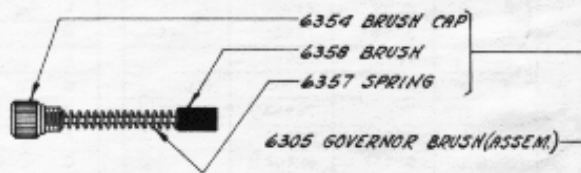
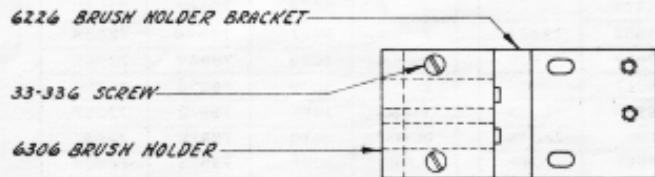


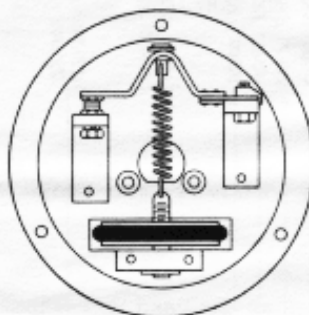
70227 HUB - NEW STYLE FOR 1/4 MOTOR SHAFT

6300 GOVERNOR COMPLETE (FOR 1/4 MOTOR SHAFT)

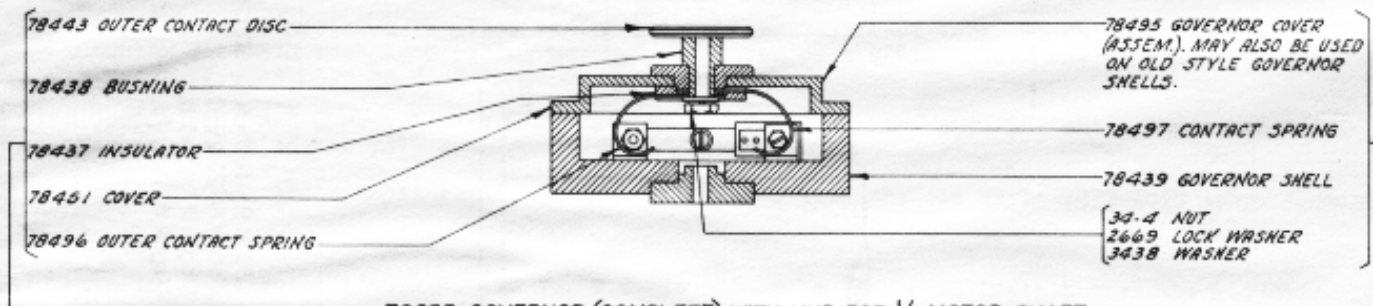
- SPEED TARGETS
7829 - BLANK
7376 - 5 SPOT
7105 - 10 SPOT
7106 - 11 SPOT

- 6032 GOVERNOR MTB. SCREW
6033 LOCK WASHER





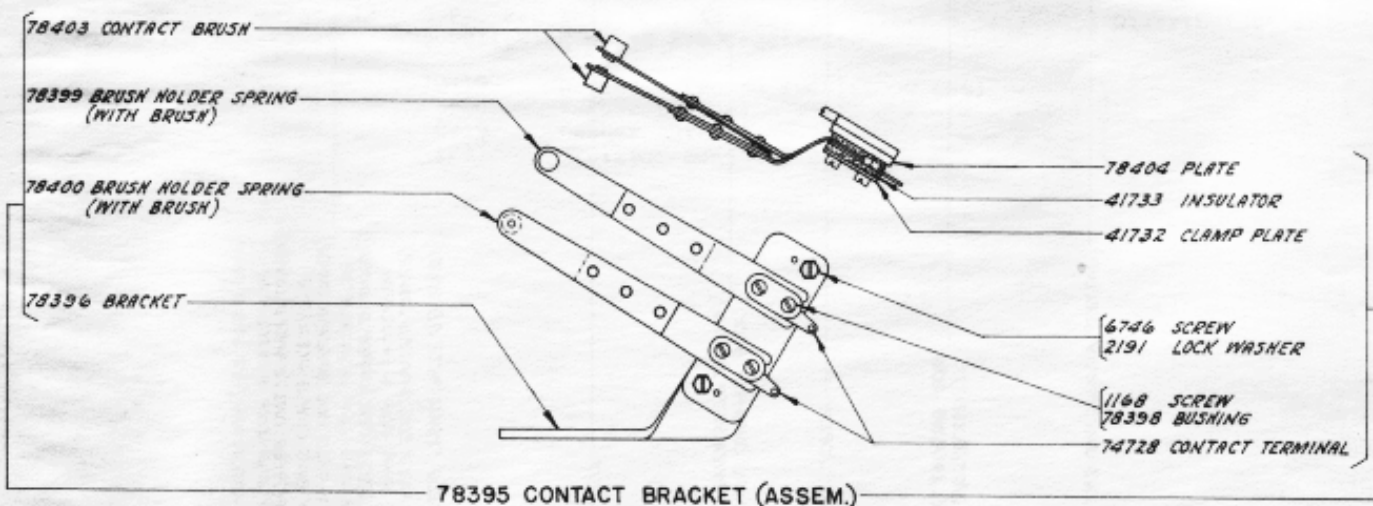
80291 GOVERNOR SHELL (ASSEM.)
(WITHOUT HUB)



- 78443 OUTER CONTACT DISC
- 78438 BUSHING
- 78437 INSULATOR
- 78451 COVER
- 78496 OUTER CONTACT SPRING

- 78495 GOVERNOR COVER (ASSEM.) MAY ALSO BE USED ON OLD STYLE GOVERNOR SHELLS.
- 78497 CONTACT SPRING
- 78439 GOVERNOR SHELL
- 30-4 NUT
- 2669 LOCK WASHER
- 3438 WASHER

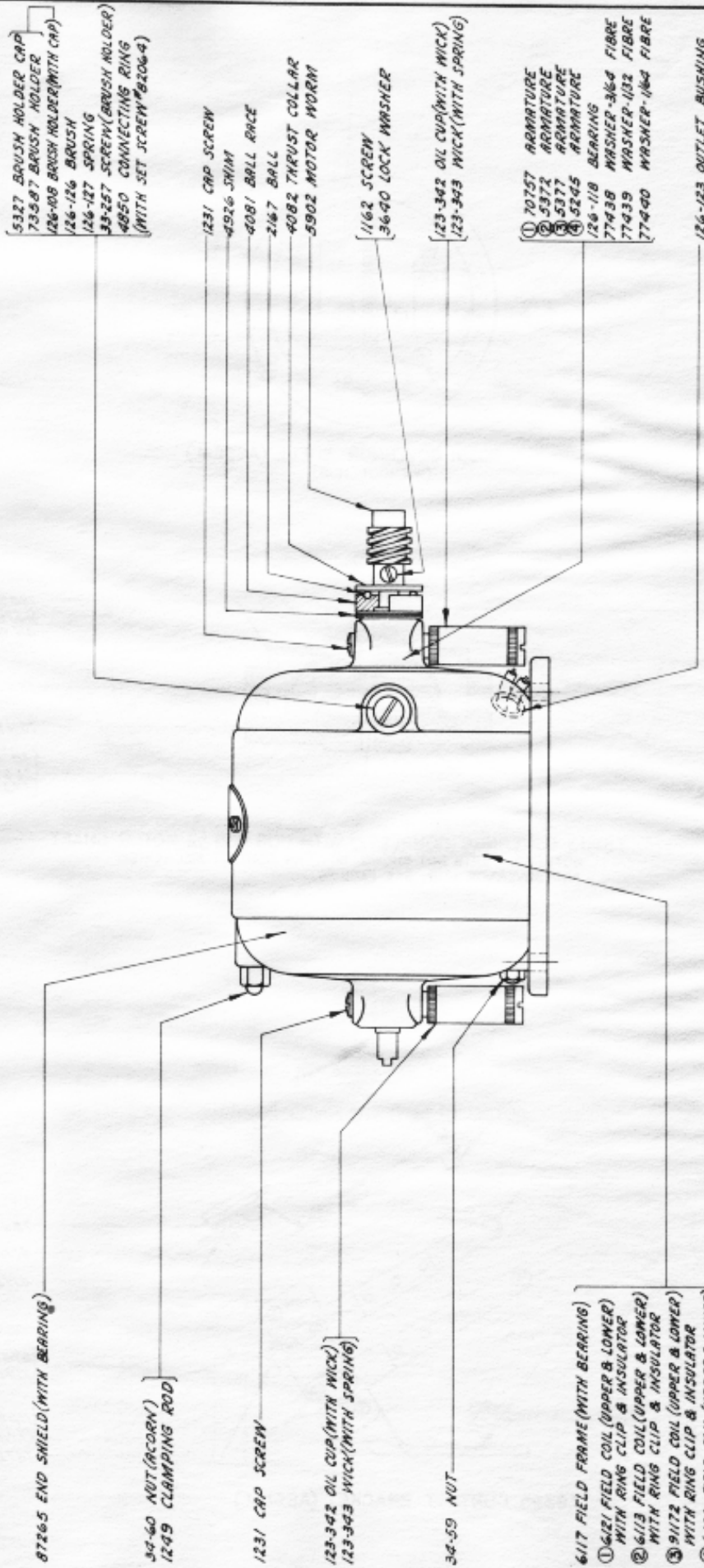
78633 GOVERNOR (COMPLETE) WITH HUB FOR 1/4 MOTOR SHAFT
NOTE: FOR PARTS NOT SHOWN, SUCH AS CONTACT MECHANISM AND GOVERNOR HUB, SEE PAGE #8.



- 78403 CONTACT BRUSH
- 78399 BRUSH HOLDER SPRING (WITH BRUSH)
- 78400 BRUSH HOLDER SPRING (WITH BRUSH)
- 78396 BRACKET

- 78404 PLATE
- 41733 INSULATOR
- 41732 CLAMP PLATE
- 6746 SCREW
- 2191 LOCK WASHER
- 1168 SCREW
- 78398 BUSHING
- 74728 CONTACT TERMINAL

78395 CONTACT BRACKET (ASSEM.)



5327 BRUSH HOLDER CAP
73587 BRUSH HOLDER
126-108 BRUSH HOLDER (WITH CAP)
126-126 BRUSH
126-127 SPRING
33-257 SCREW (BRUSH HOLDER)
4850 CONNECTING RING
(WITH SET SCREW #32064)

1231 CAP SCREW
4526 SHIM
4081 BALL RACE
2167 BALL
4082 THRUST COLLAR
5902 MOTOR WORM

1162 SCREW
36-90 LOCK WASHER

123-342 OIL CUP (WITH WICK)
123-343 WICK (WITH SPRING)

① 70757 ARMATURE
② 5372 ARMATURE
③ 5377 ARMATURE
④ 5245 ARMATURE
77438 WASHER-3/64 FIBRE
77439 WASHER-1/32 FIBRE
77440 WASHER-1/64 FIBRE

126-123 OUTLET BUSHING

87265 END SHIELD (WITH BEARING)

34-60 NUT (ACORN)
1289 CLAMPING ROD

1231 CAP SCREW

123-342 OIL CUP (WITH WICK)
123-343 WICK (WITH SPRING)

34-59 NUT

6117 FIELD FRAME (WITH BEARING)
① 6121 FIELD COIL (UPPER & LOWER)
WITH RING CLIP & INSULATOR
② 6113 FIELD COIL (UPPER & LOWER)
WITH RING CLIP & INSULATOR
③ 91172 FIELD COIL (UPPER & LOWER)
WITH RING CLIP & INSULATOR
④ 6106 FIELD COIL (UPPER & LOWER)
WITH RING CLIP & INSULATOR
6109 INSULATION (FOR FIELD COILS)

- ① 70756 MOTOR - 1/30 H.P. - 110V. - A.C. - 60 CYCLES.
- ② 5359 MOTOR - 1/40 H.P. - 220V. - D.C.
- ③ 4543 MOTOR - 1/40 H.P. - 110V. - D.C.
- ④ 4551 MOTOR - 1/40 H.P. - 110V. - A.C. - 60 CYCLES.

Ⓐ Ⓞ SEE PAGE 11 FOR EXPLANATION.

NOTES OF EXPLANATION

Pages 1 and 6

- (A) The 126-11 bushings are not used with the new style 3700 moulded connecting strip, which has the bushings moulded as a part thereof. They may, however, be ordered for use with the old style 3700 connecting strip.

Page 4

- (A) Two 41663 washers have been added under the head of each of the two 6746 screws which mount the 7387 brace to the 7382 front bracket.

Where it is desired to convert a nonrepeating keyboard to a repeating keyboard, these washers are removed and placed under the 7395 stop plate (shown on page 1), two at each mounting screw.

- (B) In order to improve the keyboard touch, it is necessary that the clearance between the lockout lever and the lock loop be made adjustable. To accomplish this, the following changes have been made:

A slot has been provided in place of the hole in the 7377 lock loop, which retains the same number. The 7378 lock loop roller has been replaced by a 92511 roller having a larger diameter in order to clear the head of the 6800 shoulder screw.

A 7002 washer and a 2191 lock washer have been added under the 3598 nut which mounts the 6800 shoulder screw to the 7377 lock loop.

Note: The new style 92511 roller should not be used with the old style 7377 lock loop.

Page 10

- (A) When the 4543 Motor 1/40 H.P. 110 V., D.C. is used on a "Keyboard Distributor" the following parts are required:

5427	Resistor (Flat Type) (1000 Ohm) - - -	1
6609	Insulator - - - - -	1
6610	Strap - - - - -	2

- (A) When the 4543 motor, 1/40 H.P., 110 volt D.C. is used on a "Receiving Distributor", the following parts are required:

1176	Screw - - - - -	4
7129	Strap - - - - -	2
5427	Resistor (Flat Type) (1000 Ohm) - - -	1
3094	Insulator - - - - -	2

- (B) When the 5359 motor, 1/40 H.P., 220 volt D.C. is used on either a "Keyboard Distributor" or a "Receiving Distributor" the following parts are required:

70410	Resistor (Round Type)(1000 Ohm) - - -	1
3620	Washer (Fibre) - - - - -	2
2719	Washer (Steel) - - - - -	1
1297	Resistor Mounting Screw - - - - -	1

NUMERICAL INDEX

33-58	Screw (6-32 x 7/16), 4	2754	Bushing (Steel), 1,6	4844	Spring Back - Long, 3,7
33-196	Screw (6-40 Pilot), 4	2829	Washer (Brass), 5	4850	Connecting Ring, 10
33-257	Screw (8-32 x 1/4), 10	2997	Bushing (Fibre), 1,6	4881	Spring Stiffener, 4
33-336	Screw (8-32 x 5/8), 8	3016	Selector Bar #1E, 7	4926	Shim, 10
33-344	Screw (10-32 x 3/4), 7	3017	Selector Bar #2E, 7	4983	Contact Bracket, 3,7
34-4	Nut (10-32 Hex.), 3,9	3018	Selector Bar #3E, 7	4985	Wick (Felt), 3,7
34-48	Nut (6-32 Hex.), 1,6	3019	Selector Bar #4E, 7	5000	Armature, 4
34-56	Nut (4-40 Hex.), 4	3020	Selector Bar #5E, 7	5245	Armature, 10
34-59	Nut (10-32 Hex.), 10	3024	"Figs." Spacer Bar, 5	5327	Brush Holder Cap, 10
34-60	Nut (6-32 Hex.), 10	3025	"Ltra." Spacer Bar, 5	5359	Motor 1/40 H.P., 220V D.C., 10
35-85	Spring, 4	3054	Pneumatic Keypop, A -, 7	5372	Armature, 10
35-133	Spring, 1	3055	" " B 7, 7	5377	Armature, 10
103-75	Resistance (125 Ohm), 5	3056	" " C 8, 7	5427	Resistance Unit (1000 Ohm), 11
123-342	Oil Cup (With Wick), 10	3057	" " D 8, 7	5438	Base (12-7/16 Wide), 6
123-343	Wick (With Spring), 10	3058	" " E 3, 7	5601	Spacing Collar, 3
126-11	Bushing (Fibre), 1,6,11	3059	" " F 1, 7	5602	Bracket, 3
126-108	Brush Holder (With Cap), 10	3060	" " G &, 7	5603	Rear Bracket (Assembly), 3
126-118	Bearing, 10	3061	" " H 2, 7	5740	Screw (2-56 x 1/4), 2
126-123	Outlet Bushing, 10	3062	" " I 8, 7	5902	Motor Worm, 10
126-126	Brush, 10	3063	" " J 7, 7	5928	Motor Post, 7
126-127	Spring, 10	3064	" " K (7, 7	5932	Worm Gear (30 Teeth) (12 AH), 3,7
M-158	Magnet Coil, 4	3065	" " L), 7	5933	Worm Gear (36 Teeth), 3,7
300-515	Clip (With Screw), 1,6	3066	" " M., 7	5963	Shim, 1,6
1026	Screw (6-40 x 3/8), 1,2, 5,6	3067	" " N., 7	6032	Screw (8-32 x 7/16), 8
1028	Screw (4-40 Special), 4	3068	" " O 9, 7	6033	Lock Washer, 8
1029	Screw (6-40 x 7/16), 7	3069	" " P 0, 7	6098	Gear Hub, 3,7
1038	Screw (6-40 x 9/32), 1,2	3070	" " Q 1, 7	6106	Field Coil (Upper & Lower), 10
1064	Screw (6-32 x 1/4), 8	3071	" " R 4, 7	6109	Insulation (For Field Coils), 10
1160	Screw (6-40 x 5/16), 3,7	3072	" " S 7, 7	6113	Field Coil (Upper & Lower), 10
1162	Screw (4-40 x 1/4), 3,7, 10	3073	" " T 5, 7	6117	Field Frame (With Bearing), 10
1163	Screw (4-40 x 3/16), 3,7	3074	" " U 7, 7	6121	Field Coil (Upper & Lower), 10
1168	Screw (4-40 x 5/16), 3,9	3075	" " V., 7	6211	Worm Gear (42 Teeth) (12 AL), 3,7
1169	Screw (6-40 x 7/16), 1,2, 6	3076	" " W 2, 7	6212	Brush Bracket Mounting Strip, 7
1171	Screw (6-32 x 3/16), 1,5	3077	" " X /., 7	6226	Brush Holder Bracket, 8
1173	Screw (3-48 Special), 1, 5	3078	" " Y b., 7	6300	Governor Complete, 8
1176	Screw (6-40 x 3/16), 6,11	3079	" " Z", 7	6301	Cover, 8
1193	Screw (10-32 x 7/8), 7	3080	" " Blank, 7	6305	Governor Brush (Assembly), 8
1210	Screw (2-56 x 5/8), 3,7	3081	" " Figs., 7	6306	Brush Holder, 8
1213	Screw (6-40 Shoulder), 3	3082	" " Ltra., 7	6311	Bakelite Ring, 8
1219	Screw (8-32 Special), 3, 7	3094	Insulator, 11	6314	Contact Spring (Assembly), 8
1226	Screw (6-40 x 3/4), 1,6	3438	Washer, 7,9	6318	Contact Spring Clamp, 8
1231	Screw (Special), 10	3458	Shim, 2	6319	Block, 8
1245	Screw (10-32 x 1), 3,7	3571	Bushing, 3,7	6320	Screw (Contact), 8
1249	Clamping Rod, 10	3573	Pneumatic Keypop Carriage Return, 7	6323	Spring, 8
1259	Screw (10-32 x 2-1/4), 5	3578	Pneumatic Keypop Line Feed, 7	6324	Adjusting Wheel, 8
1297	Screw (6-40 x 2-7/16), 11	3598	Nut (6-40 Hex.), 2,3,4,5,11	6330	Bearing, 8
2167	Ball, 10	3606	Nut (6-40 Hex.), 2	6339	Inner Governor Ring, 8
2191	Lock Washer, 1 to 9, 11	3620	Washer (Fibre), 1,6,11	6340	Outer Governor Ring, 8
2247	Washer, 1,6,7	3624	Washer (Brass), 3,7	6341	Bushing, 8
2378	Spacer Key Lever, 1	3625	Shaft, 2	6342	Wire, 8
2382	Lock Washer, 3	3627	Spacer Bar, 1	6344	Screw (6-32 x 11/32), 8
2393	Resistance Unit (1000 Ohm), 5	3640	Lock Washer, 3,4,7,8,10	6345	Nut (6-32 Hex.), 8
2407	Lock Washer, 4	3646	Lock Washer, 3,7	6346	Screw (6-32 x 3/4), 8
2422	Lock Washer, 3,7	3700	Connection Strip, 1,6,11	6347	Screw (6-32 x 3/8), 8
2431	Selector Bar #1, 7	4081	Ball Race, 10	6348	Screw (4-36 x 3/4), 8
2432	Selector Bar #2, 7	4082	Thrust Collar, 10	6354	Brush Cap, 8
2433	Selector Bar #3, 7	4388	Base (10-5/16 Wide), 6	6357	Spring, 8
2434	Selector Bar #4, 7	4404	Bracket, 3	6358	Brush, 8
2435	Selector Bar #5, 7	4492	Cable (W.D. 497), 6	6609	Resistance Insulator, 11
2438	Washer (Brass), 4	4501	Shaft, 3,7	6610	Insulator Strap, 11
2497	Bracket, 3,7	4502	Insulator, 3,7	6674	Cable (W.D. 525), 2
2502	Mounting Strip, 4	4503	Plate, 3,7	6746	Screw (6-40 x 5/16), 3,4,5, 9,11
2503	Cover Plate, 4	4529	Gear (28 Teeth), 3	6770	Bakelite Disc, 8
2504	Insulator Strip, 4	4543	Motor - 1/40 H.P., 110V D.C., 10, 11	6800	Screw (6-40 Shoulder), 4,11
2508	Contact Lever, 3,7	4548	Rear Bracket (Assembly), 3	6801	Screw (4-40 Pilot), 5
2525	Key Lever Guide, 1	4551	Motor - 1/40 H.P., 110V A.C., 10	6805	Screw (6-40 Shoulder), 1,4
2526	Spacing Collar - Short, 4	4641	Spring, 3,7	6811	Screw (6-40 x 5/8), 4,7
2528	Spring Bar, 2	4642	Friction Disc, 3,7	6814	Screw (6-40 Pilot), 4
2529	Bushing (Fibre), 4	4643	Washer, 3,7	6819	Base (Assembly) (12-7/16), 6
2539	Nut (3/8 x 32 Hex.), 3,7	4644	Washer (With Pin), 3,7	6942	Screw (Eccentric Shoulder), 4
2540	Bushing, 3,7	4647	Shaft (With Collar), 7	7001	Washer, 1,5
2565	Key Lever Spring, 2	4650	Stop Cam, 3,7	7002	Washer, 4,11
2566	Spacer Key Lever Spring, 2	4651	Indicator Plate, 3,7	7032	Pawl, 4
2574	Key Lever Upstop, 1	4652	Cam Cylinder, 3,7	7078	Post, 5
2598	Post, 1,5	4706	Washer (Fibre), 1,6	7081	Spring Post, 4
2623	Spring, 4	4707	Washer (Brass), 1,6	7105	Speed Target - 10 Spot, 8
2663	Rubber Buffer, 1	4712	Shaft (With Collar), 3	7106	Speed Target - 11 Spot, 8
2669	Lock Washer, 7,9	4722	Base (With 2574 Upstop), 1	7129	Strap, 11
2719	Washer, 11	4723	Base (Assembly), 1	7199	Pawl, 1
2728	Bearing, 2	4810	Wick (Felt), 4	7287	Universal Bar, 2
		4842	Insulator, 3,7	7318	Contact Lever, 4
		4843	Spring Back - Short, 3,7	7373	Bearing Bushing, 4
				7377	Lock Loop, 4, 11

7378 Roller, 4, 11
 7380 Transmitter (Assembly), 4
 7381 Contact Mounting (Assembly),
 4
 7382 Front Bracket, 4, 11
 7383 Oiler, 4
 7385 Rear Bracket (With Spring
 Posts), 4
 7386 Post, 4
 7387 Brace, 4, 11
 7389 Driving Clutch, 3
 7391 Driven Clutch, 3
 7394 Spacer Bar, 5
 7395 Stop Plate, 1, 11
 7396 Bracket - Left, 2
 7397 Bracket - Right, 2
 7404 Lockout Lever, 4
 7406 Lockout Lever Shaft, 4
 7407 Spacing Collar - Long, 4
 7409 Clutch Lever, 4
 7640 Pneumatic Keypop J SGL, 7
 7654 Shim, 4
 7829 Blank Target, 8
 8095 Gear - 32 Teeth - Steel, 3
 8096 Transmitter Shaft, 3
 8097 Cam Sleeve, 3
 8165 Washer, 8
 8177 Pneumatic Keypop S Bell, 7
 8186 Mounting Block, 5
 8221 Bushing, 3
 8254 Cable Clamp, 6
 8255 Pneumatic Keypop H #, 7
 8307 Cable (W.D. 527), 6
 8896 Shim, 4
 9177 Contact Stop, 4
 9178 Contact Spring, 4
 9182 Contact Lever Shaft, 4
 9188 Front Bracket (Assembly), 3,
 7
 9203 Bracket (With Rollers), 2
 9205 Spacer Bar (Assembly), 1
 9207 Spacer Bar Loop, 1
 9209 Key Lever (Lower), 1
 9210 Key Lever (Center), 1
 9211 Key Lever (Upper), 1
 9385 "Figs." Spacer Bar Loop, 5
 9386 "Ltrs." Spacer Bar Loop, 5
 9387 "Figs." Spacer Bar (Assembly),
 5
 9388 "Ltrs." Spacer Bar (Assembly),
 5
 9558 Contact Spring, 3, 7
 9559 Contact Spring - Long, 7
 9649 Contact Stop - Long, 7
 9655 Contact Stop, 3, 7
 9679 Rear Bracket (Assembly), 7
 9680 Bracket, 4
 9993 Base (Assembly), (10-5/16), 6
 9995 Contact Bracket (Assembly), 7
 9998 Contact Bracket (Assembly), 3
 41663 Washer, 4, 11
 41732 Clamp Plate, 9
 41733 Insulator, 9
 55080 Bezel, 1
 70177 Screw (6-40 Pilot), 2
 70227 Governor Hub, 8
 70410 Resistance (1000 Ohm), 11
 70750 Motor - 1/30 H.P., 110V
 A.C., 60 Cycles, 10
 Armature, 10
 70757
 71053 Pneumatic Keypop F 1/4, 7
 71057 " " L 3/4, 7
 71449 Key Lever Guide, 2
 71995 Pneumatic Keypop O 1/8, 7

CELLULOID KEYTOPS

72031
 72032
 72033
 72034
 72035
 72037
 72038
 72039
 72041
 72042
 72045

A - , 7
 B 1 , 7
 C : , 7
 D \$, 7
 E 3 , 7
 G & , 7
 H f , 7
 I 8 , 7
 K (, 7
 L) , 7
 O 9 , 7

72046
 72047
 72048
 72050
 72051
 72052
 72053
 72054
 72055
 72056
 72057
 72058
 72061
 72510
 72704
 72705
 72706
 72707
 72824
 72826
 72827
 72828
 72830
 72835
 72983
 72984
 72985
 73151
 73152
 73175
 73376
 73419
 73587
 74728
 75606
 75607
 75691
 77162
 77163
 77164
 77167
 77438
 77439
 77440
 77609
 78395
 78396
 78398
 78399
 78400
 78403
 78404
 78437
 78438
 78439
 78451
 78495
 78496
 78497
 78633

P O , 7
 Q 1 , 7
 R 4 , 7
 T 5 , 7
 U 7 , 7
 V : , 7
 W 2 , 7
 X / , 7
 Y 6 , 7
 Z " , 7
 Figs. , 7
 Ltrs. , 7
 Blank, 7
 Gear (28 teeth), 3
 Pneumatic Keypop V 3/8, 7
 " " B 5/8, 7
 " " N 7/8, 7
 " " K 1/2, 7
 Celluloid Keypop M . , 7
 " " F ! , 7
 " " J # , 7
 Celluloid Keypop S " , 7
 " " N , , 7
 Contact Point, 8
 Key Lever (Lower), 1
 Key Lever (Center), 1
 Key Lever (Upper), 1
 Celluloid Keypop Carriage
 Return, 7
 Celluloid Keypop Line
 Feed, 7
 Lock Washer, 3, 7
 Speed Target - 5 Spot, 8
 Shim, 3, 7
 Brush Holder, 10
 Contact Terminal, 9
 Spring, 4
 Washer, 4
 Pneumatic Keypop J , . 7
 Screw (6-40 Eccentric
 Shoulder), 5
 Rod, 5
 Bracket, 5
 Loop, 5
 Washer (Fibre) 3/64 Thick,
 10
 Washer (Fibre) 1/32 Thick,
 10
 Washer (Fibre) 1/64 Thick,
 10
 Repeat Space Mechanism
 (Assembly), 5
 Contact Bracket (Assembly), 9
 Bracket, 9
 Bushing, 9
 Brush Holder Spring
 (With Brush), 9
 Brush Holder Spring
 (With Brush), 9
 Contact Brush, 9
 Plate, 9
 Insulator, 9
 Bushing, 9
 Governor Shell, 9
 Outer Contact Disc, 9
 Cover, 9
 Governor Cover (Assembly), 9
 Outer Contact Spring, 9
 Contact Spring, 9
 Governor Complete, 9

SPRING CUSHION KEYTOPS

A - , 7
 B 1 , 7
 C : , 7
 D \$, 7
 E 3 , 7
 F ! , 7
 G & , 7
 H f , 7
 I 8 , 7
 J # , 7
 K (, 7
 L) , 7
 M . , 7
 N , , 7
 O 9 , 7

78961
 78962
 78963
 78964
 78965
 78966
 78967
 78968
 78969
 78970
 78971
 78972
 78973
 78976
 78978
 78980
 78981
 78982
 78983
 78984
 78985
 78986
 78987
 78988
 78993
 80291
 80471
 82064
 82274
 82607
 86868
 86869
 87265
 89896
 89897
 89917
 90260
 90438
 91167
 91168
 91169
 91172
 91820
 91821
 92511
 P O , 7
 Q 1 , 7
 R 4 , 7
 T 5 , 7
 U 7 , 7
 V : , 7
 W 2 , 7
 X / , 7
 Y 6 , 7
 Z " , 7
 Blank, 7
 Figs. , 7
 Ltrs. , 7
 Car. Ret., 7
 Line Feed, 7
 S Bell, 7
 H # , 7
 F 1/4 , 7
 L 3/4 , 7
 C 1/8 , 7
 V 3/8 , 7
 B 5/8 , 7
 N 7/8 , 7
 K 1/2 , 7
 J , 7
 Governor Shell (Assembly), 9
 Spring, 3
 Sorew (4-48 x 11/64), 10
 Pneumatic Keypop H Stop, 7
 Spring Cushion Keypop H Stop, 7
 Bushing, 8
 Post, 8
 End Shield (With Bearing), 10
 Oil Cup, 4
 Nut (10-32 Hex.), 4
 Screw (4-40 Eccentric), 4
 Spring, 4
 Oil Ring, 4
 Cable (W.D. 592), 6
 Cable (W.D. 592), 6
 Cable (W.D. 742), 6
 Field Coil (Upper & Lower), 10
 Contact Spring, 3
 Contact Stop, 3
 Roller, 11