

CHANGES AND ADDITIONS
TO THE FOLLOWING PARTS BULLETINS

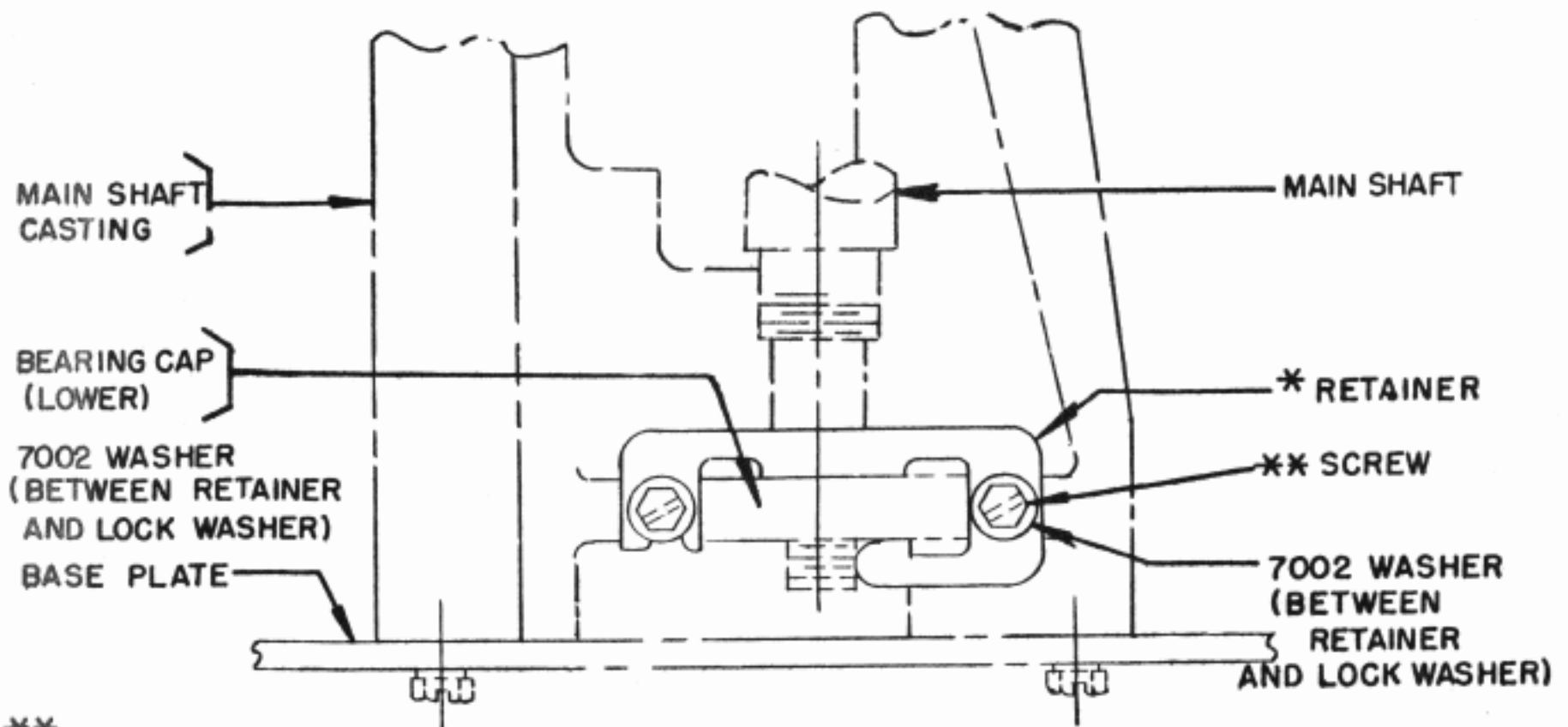
<u>Model 14 Printers</u>	<u>Model 14 Typing Reperforators</u>	<u>Model 14 Non-Typing Selectors</u>	<u>Model 14 Typing Reperforator Transmitter</u>	<u>Multiple Reperforator</u>
1028 Issue 2	1082 Issue 2	1083 Issue 1	1108 Issue 2	1130 Issue 1
1030 Issue 2	1088 Issue 2	1107 Issue 1	1126 Issue 1	
1031 Issue 3	1100 Issue 2	1116 Issue 1		
	1117 Issue 2			

On units operating at high speed or after prolonged use, the main shaft shown in the above bulletins may have a tendency to shift under the bearing caps.

In order to prevent this, two 7002 washers have been added on the upper bearing cap; two 7002 washers and a * retainer have been added on the lower bearing cap and should be mounted as shown below:

- * 120895 retainer (for Bulletin 1130 only)
- * 117387 retainer (for all other bulletins)

** Units with serial numbers lower than 70,000 require 105960 screws (6-40 x 11/16) in place of the 72508 (formerly 6811-6-40 x 5/8) screws (6-40 x 3/4). When the threads of the tapped holes in the 7610 main shaft bracket become damaged a 124613 steel insert may be ordered.



LOWER PORTION OF MAIN SHAFT CASTING