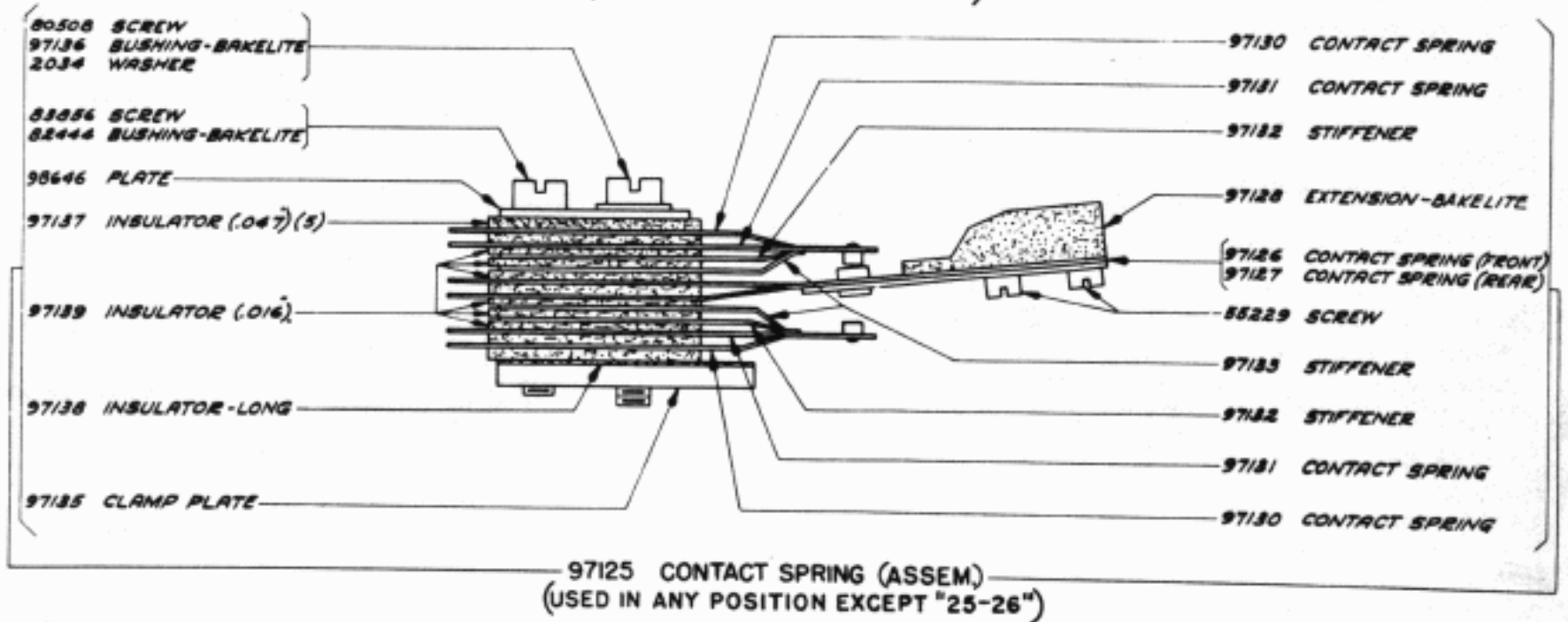
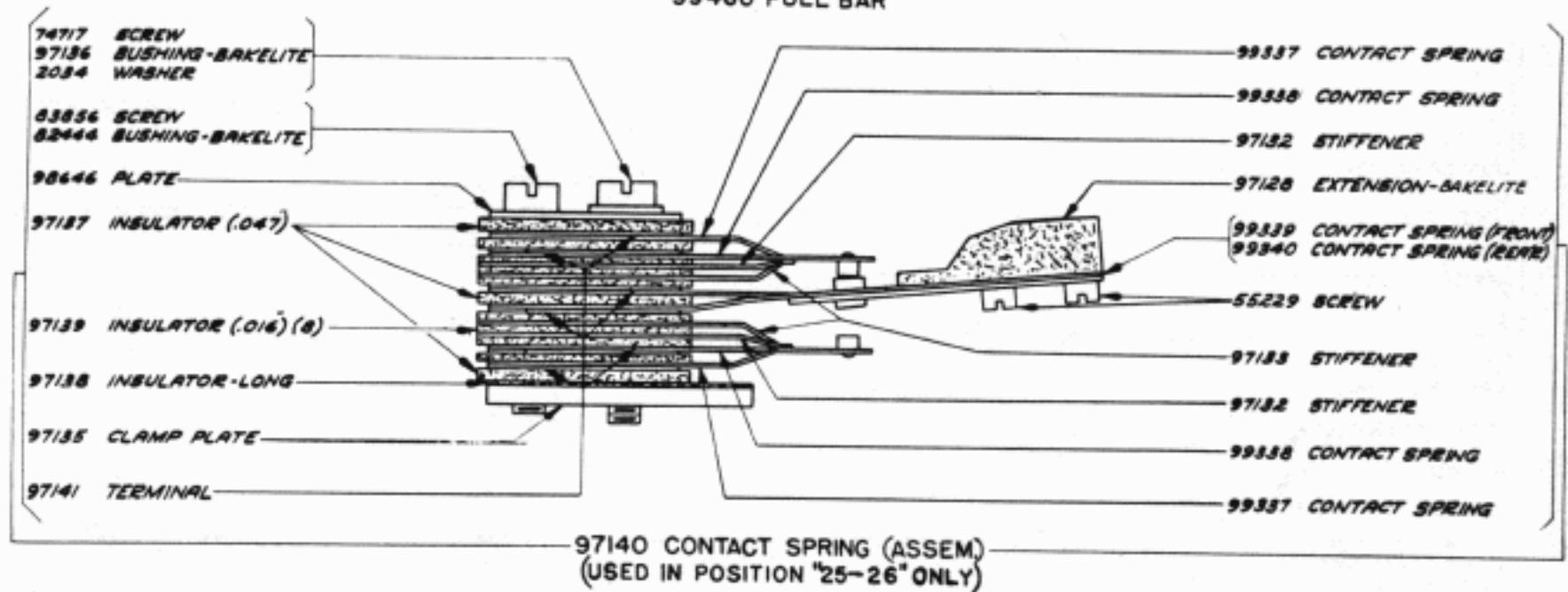
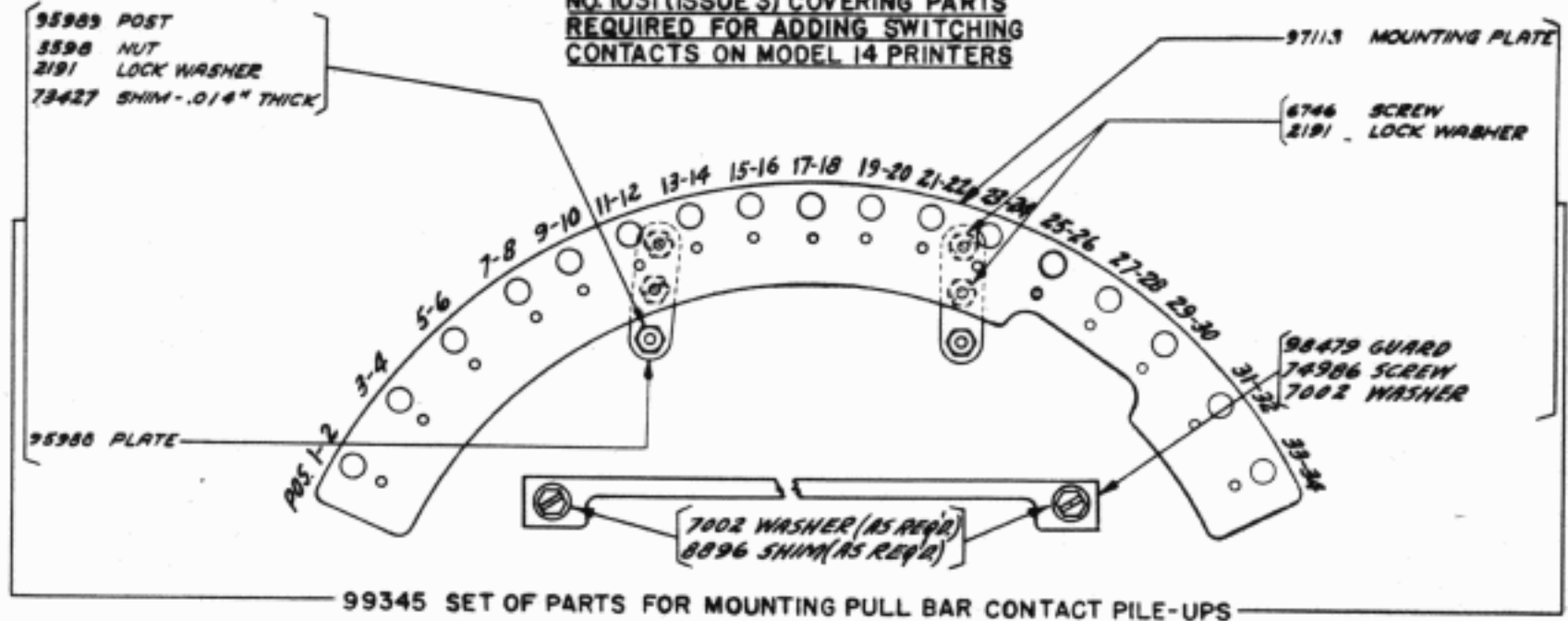
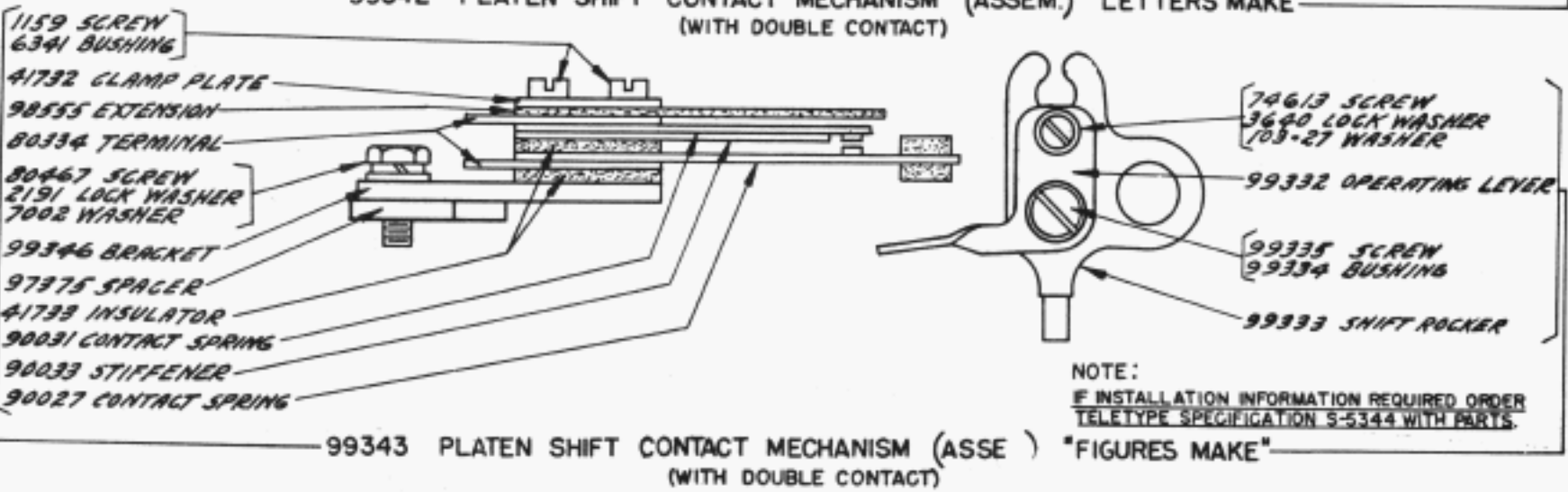
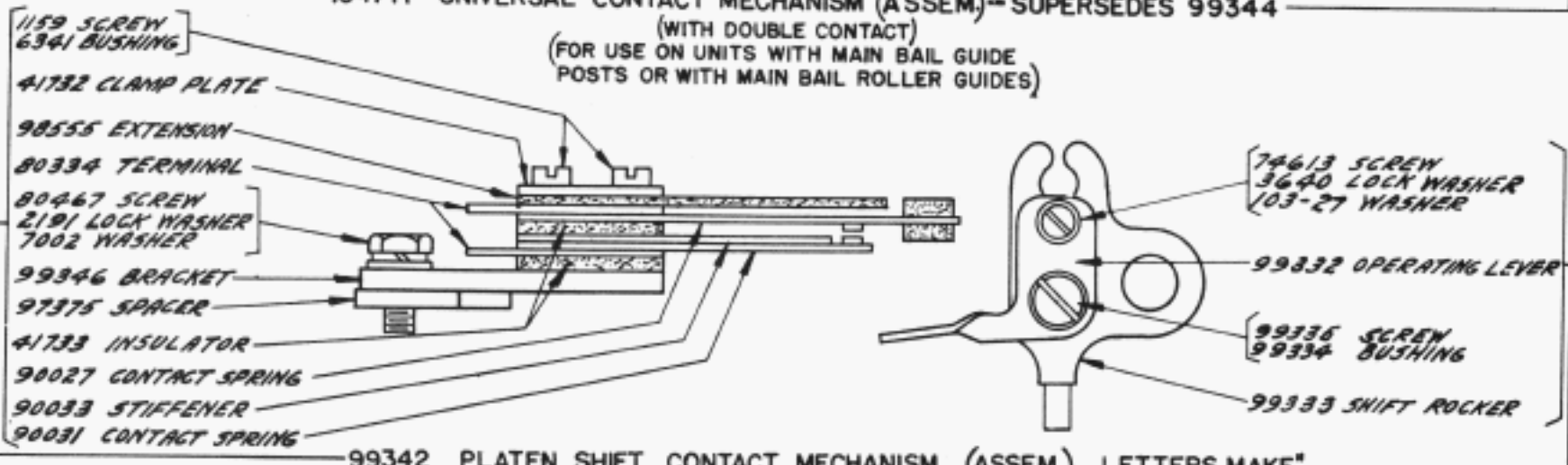
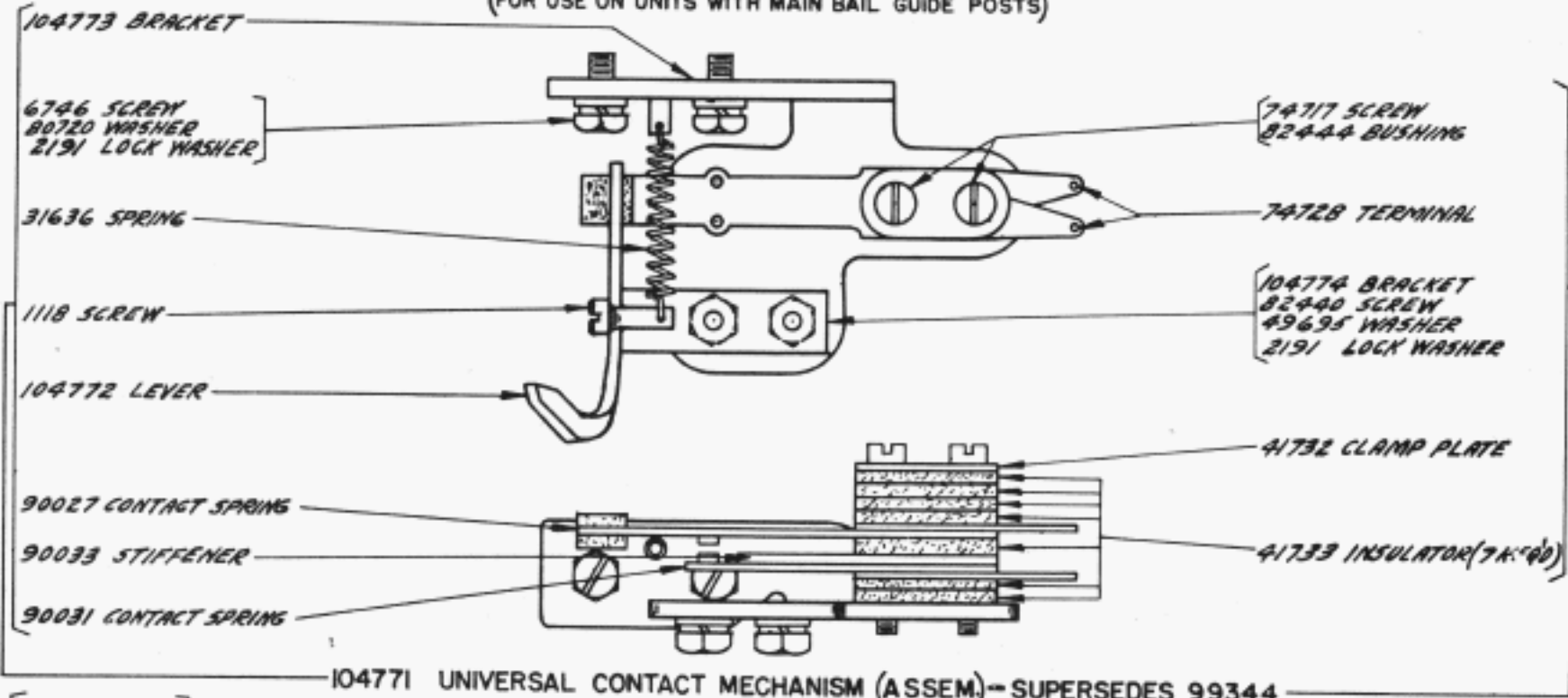
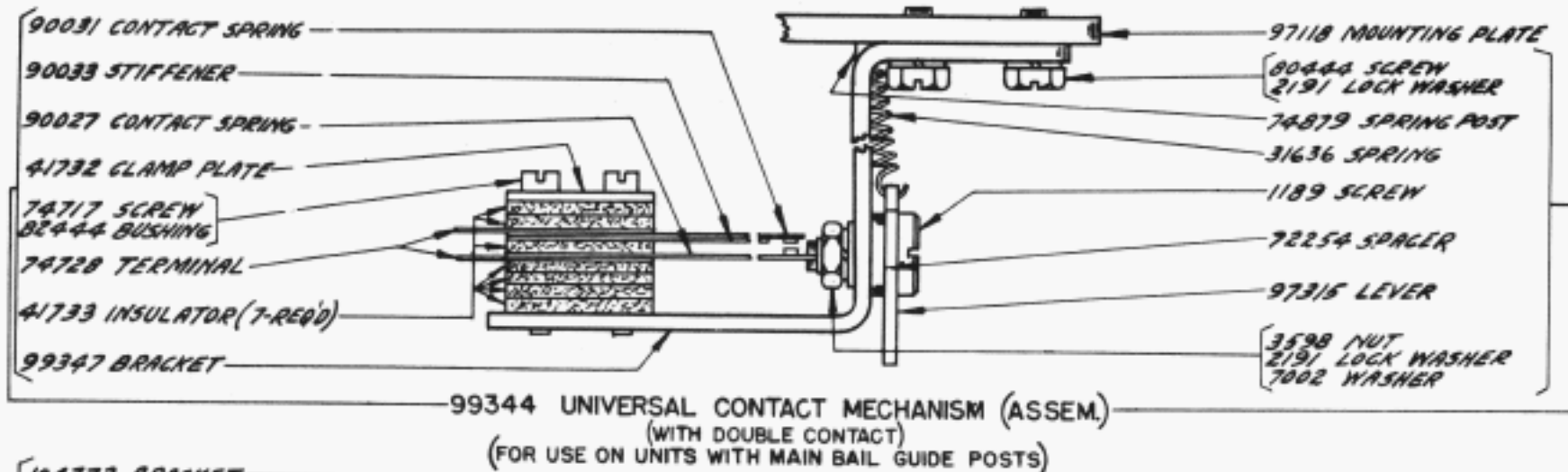


CHANGES AND ADDITIONS IN BULLETIN  
NO. 1031 (ISSUE 3) COVERING PARTS  
REQUIRED FOR ADDING SWITCHING  
CONTACTS ON MODEL 14 PRINTERS



NOTE:  
IF INSTALLATION INFORMATION  
REQUIRED ORDER TELETYPE  
SPECIFICATION S-5344 WITH PARTS.

NOTE:  
THE USE OF 97140 AND 97125 CONTACT SPRING  
ASSEMBLIES INVOLVES PATENT QUESTIONS AND THEY  
SHOULD BE USED IN ONLY SUCH SWITCHING CIRCUITS  
AND ARRANGEMENTS AS HAVE RECEIVED PATENT  
APPROVAL.



NOTE:  
IF INSTALLATION INFORMATION REQUIRED ORDER  
TELETYPE SPECIFICATION 9-5344 WITH PARTS.