

Bulletin No. 1086

Issue 2

April, 1943

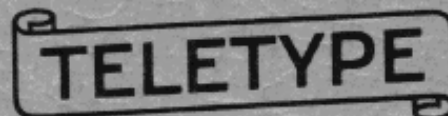
TELETYPE

PRINTING TELEGRAPH SYSTEMS

PARTS

TYPE BAR TAPE PRINTER

(MULTIPLEX 7 UNIT)



CORPORATION

SUBSIDIARY OF

Western Electric Company

CHICAGO, U.S.A.

Bulletin No. 1086
Issue 2
April, 1943

TELETYPE

PRINTING TELEGRAPH SYSTEMS

PARTS
TYPE BAR TAPE PRINTER
(MULTIPLEX 7 UNIT)

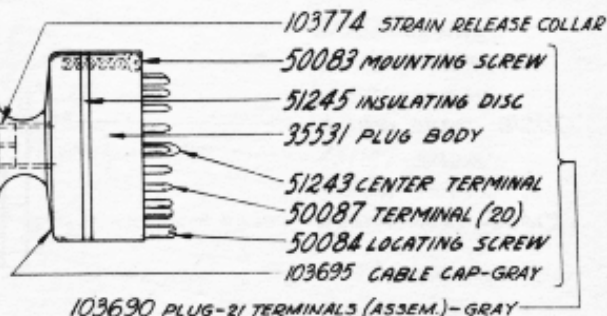
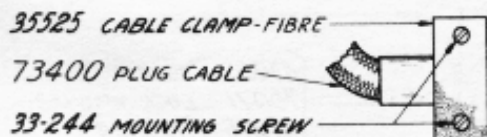
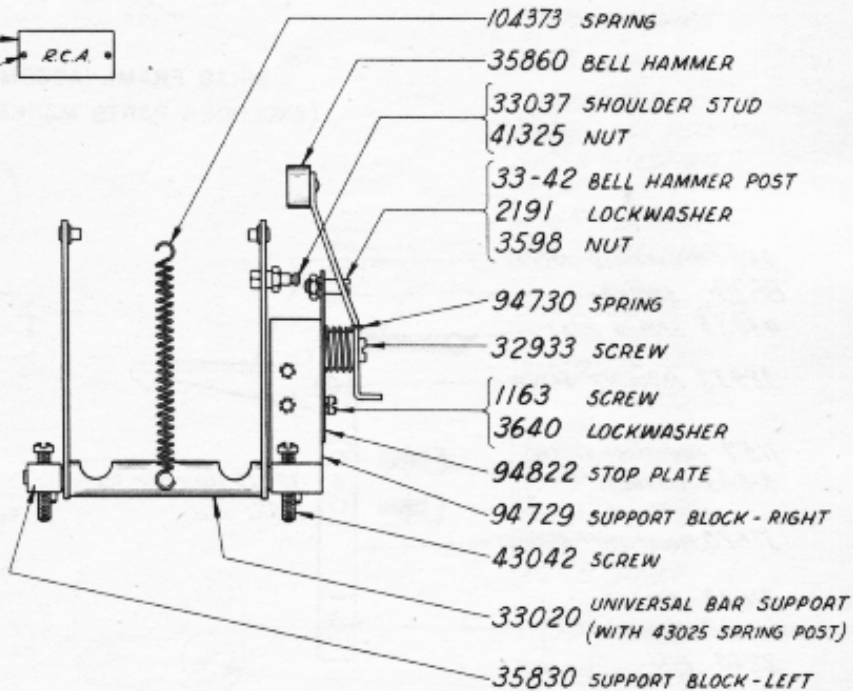
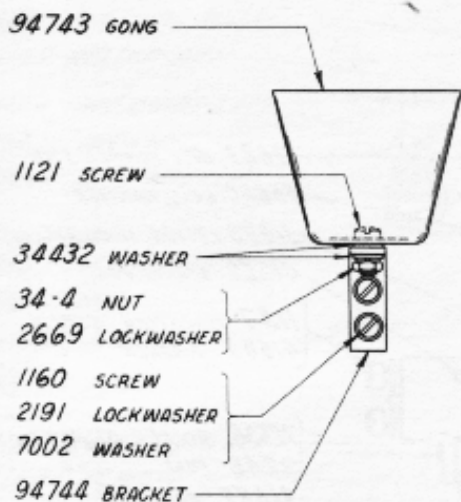
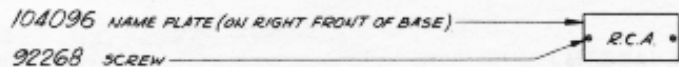
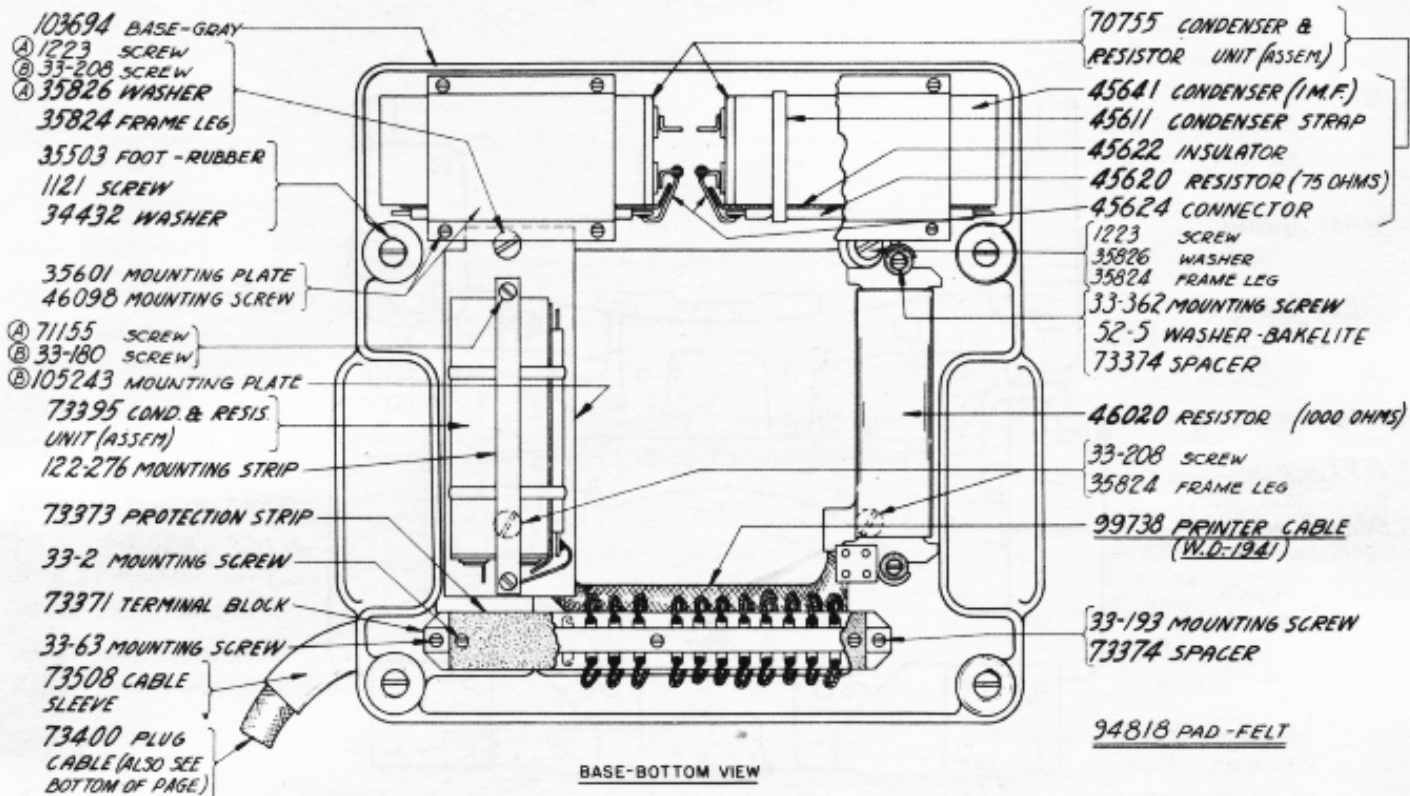


ALPHABETICAL INDEX

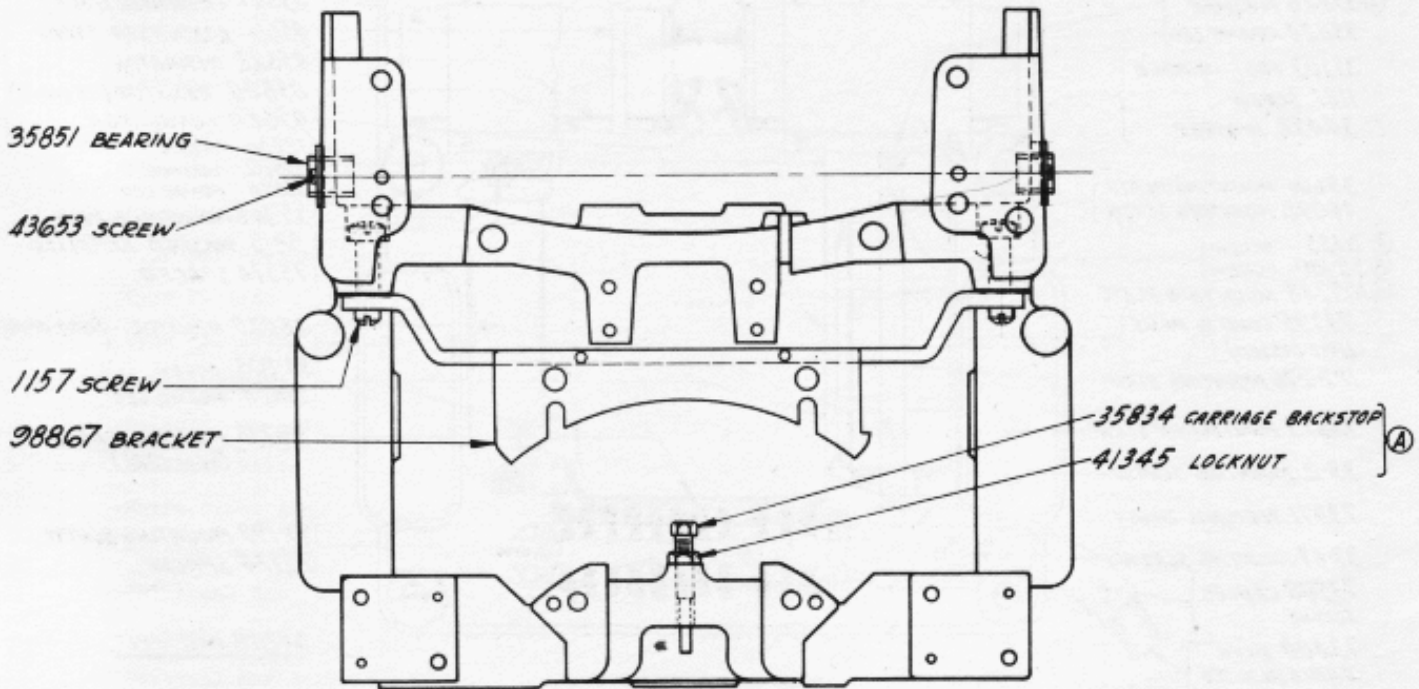
	<u>Page</u>
Base - Bottom View	1
Beam Reset Arm	5
Bell	5
Bell Hammer	1,2
Buzzer - Tape-Out	11
Cable - Plug	1
Cable - Printer	1
Carriage Parts	3
Condenser	1
Condenser and Resistor Unit (Assem.)	1
Cover (Assem.)	12
Eighth Pulse Cutout Contact (Assem.)	12
Eighth Pulse Cutout Shaft and Lever	7
Eighth Pulse Magnet Unit (Assem.)	9
Eighth Pulse Relay (Assem.)	9
Figure Shift Bracket	2
Frame	2
Gong	1
Lamp	11
Letter Shift Bracket	2
Magnets	8,9
Mis-selection Mechanism	6
Numerical Index	14
Pad - Felt	1,12
Platen	3
Platen Shaft	3
Plug - 21 Pin	1
Printing Contact Lock (Assem.)	8
Printing Contact Unit (Assem.)	12
Printing Relay (Assem.)	9
Printing Shaft Parts	10
Printing Solenoid Unit (Assem.)	8
Pull Bars	6
Resistor	1
Ribbon Carrier	5
Ribbon Feed Unit	4
Tape Chute	2
Tape Guides	3

II
(B-1086)

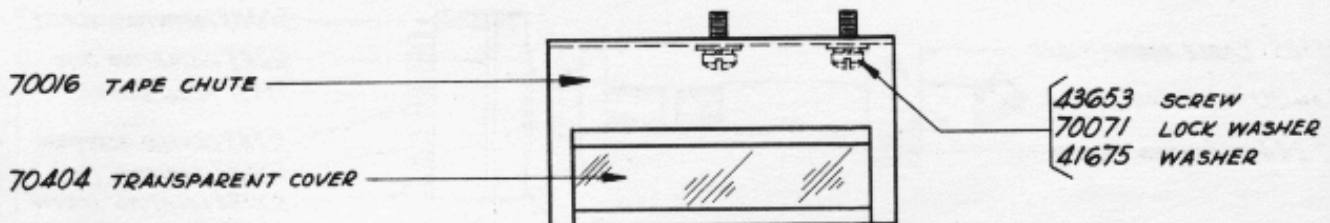
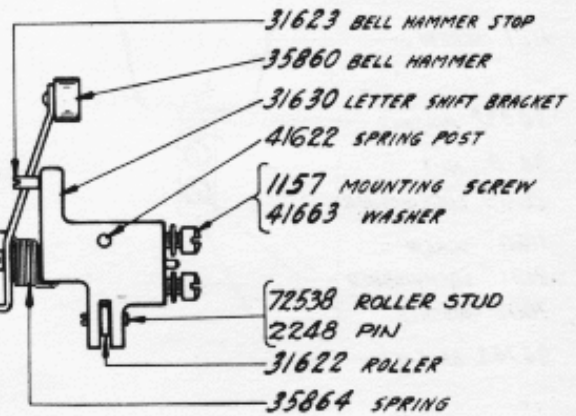
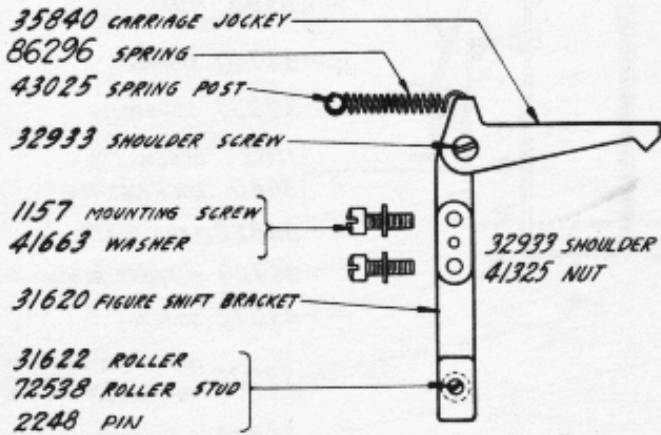
	<u>Page</u>
Tape Idler	5
Tape-Out Parts	11
Tape Reel Parts	11
Terminal Block	1
Type Bars	13
Type Bar Guide	5
Type Bar Pad	5
Type Bar Segment	5
Type Pallets	13
Type Soldering Fixture	10
Selector Bars	7
Selector Magnets	8
Selector Parts	7
Shift Cross Arm	3
Spacing Ratchet	3
Universal Bar	8
Vertical Bars	5,10
Vertical Bar Segment	5

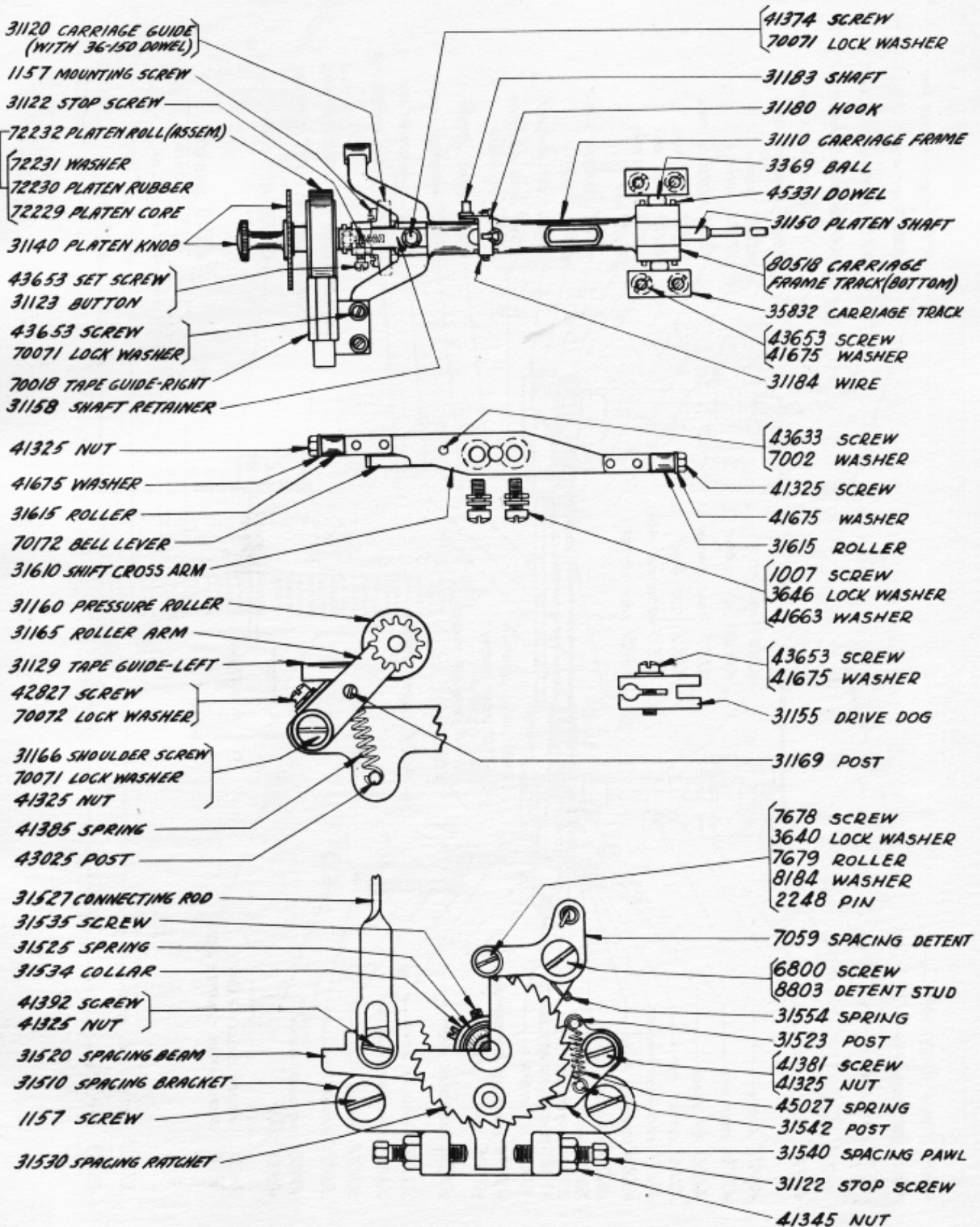


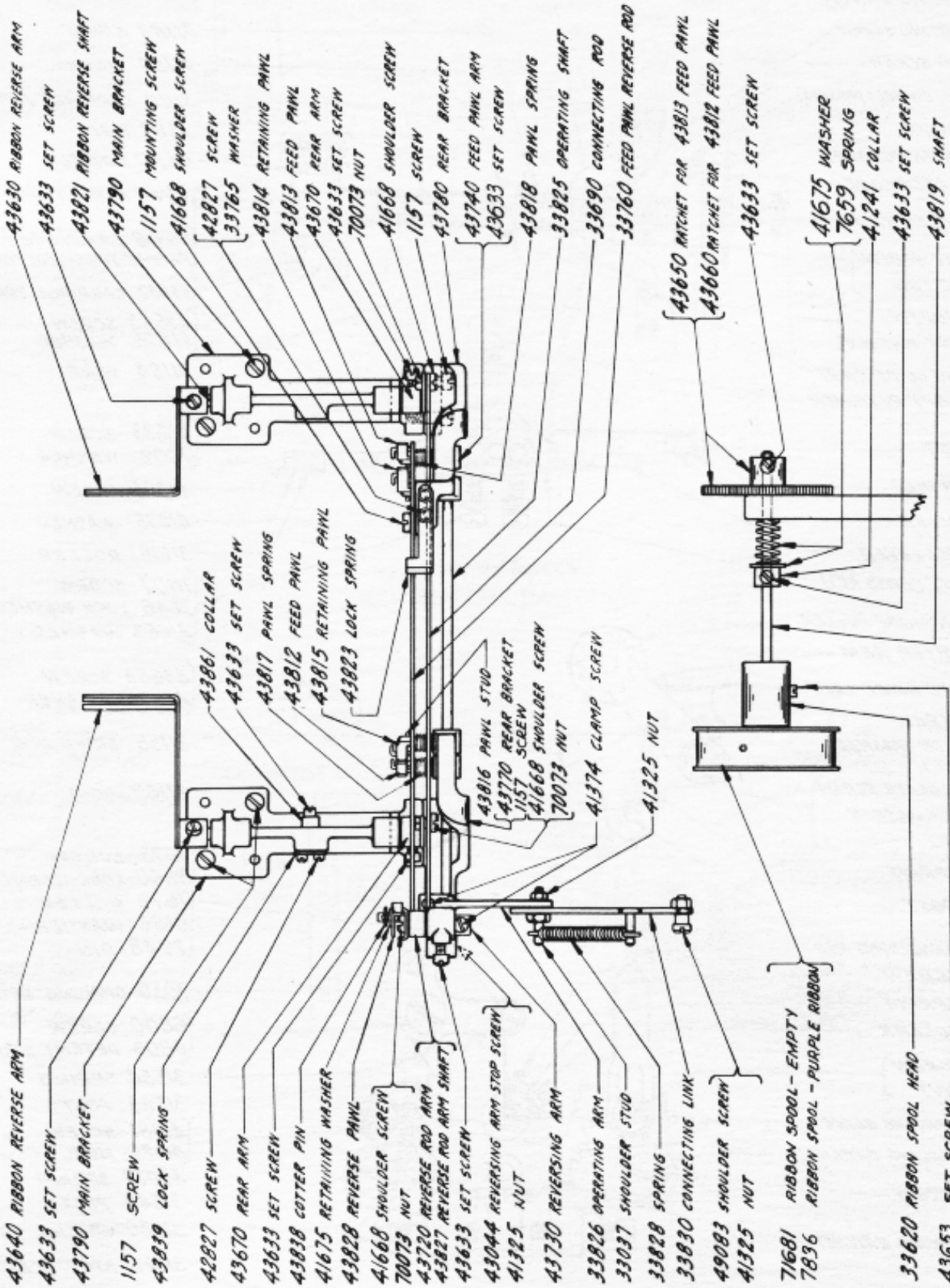
① OLD STYLE PARTS-USED WHEN 105243 MOUNTING PLATE IS NOT USED.
② NEW STYLE PARTS-USED WHEN 105243 MOUNTING PLATE IS USED.

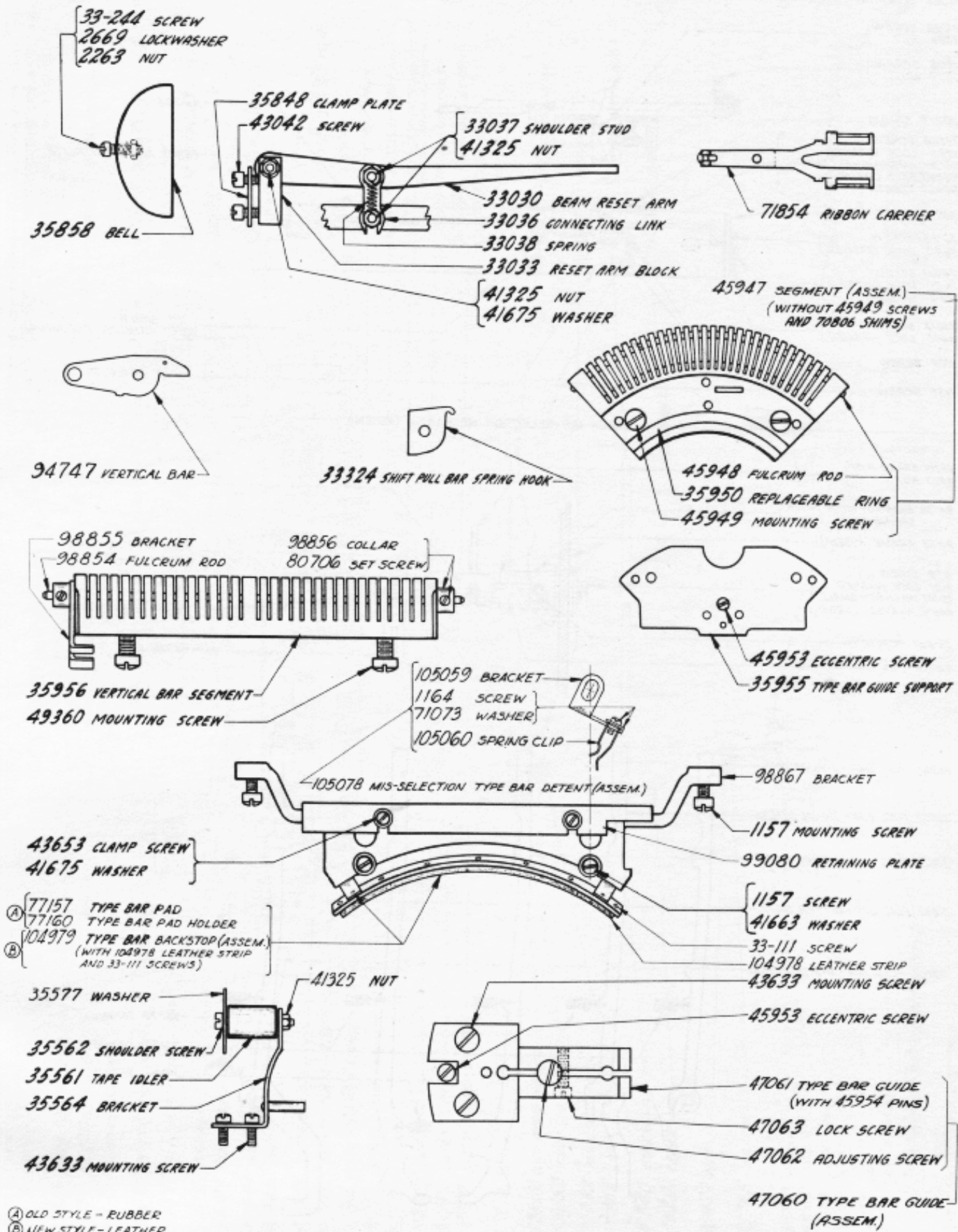


99138 FRAME (ASSEM.)
 (EXCLUDES PARTS MARKED (A))

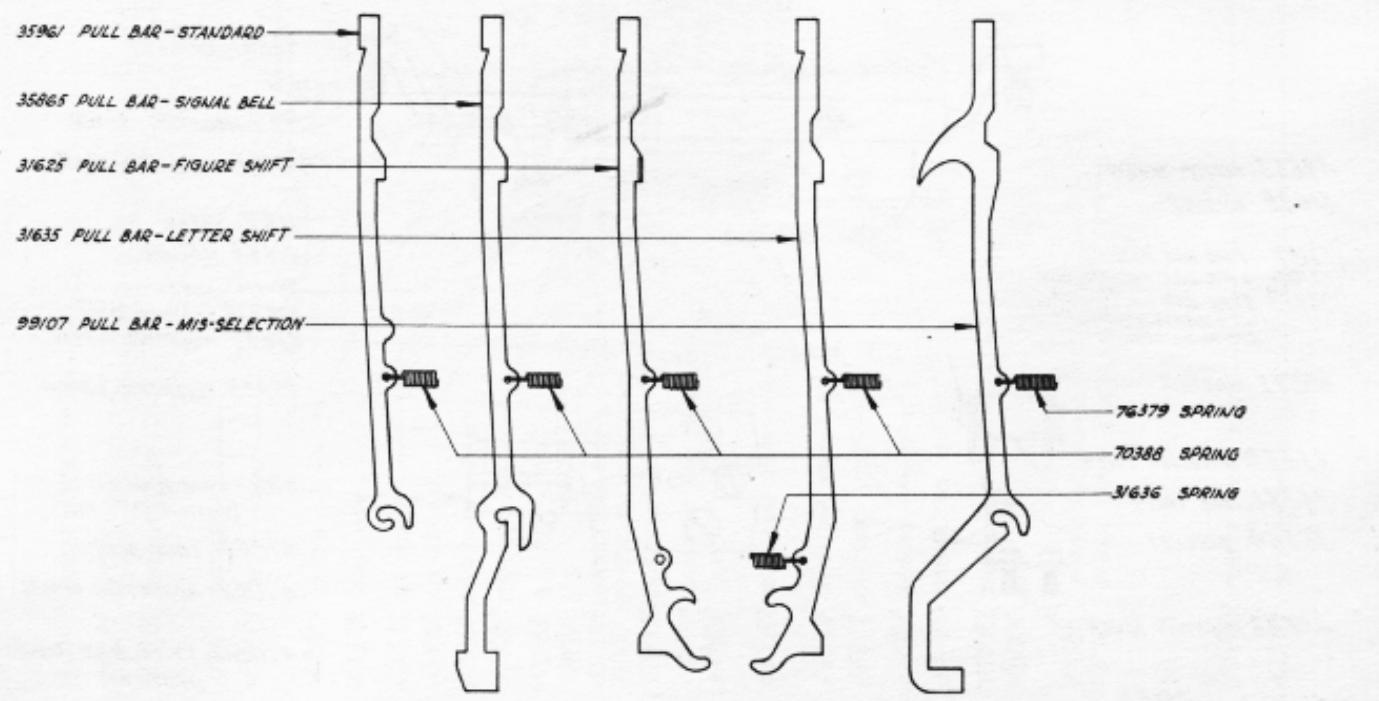
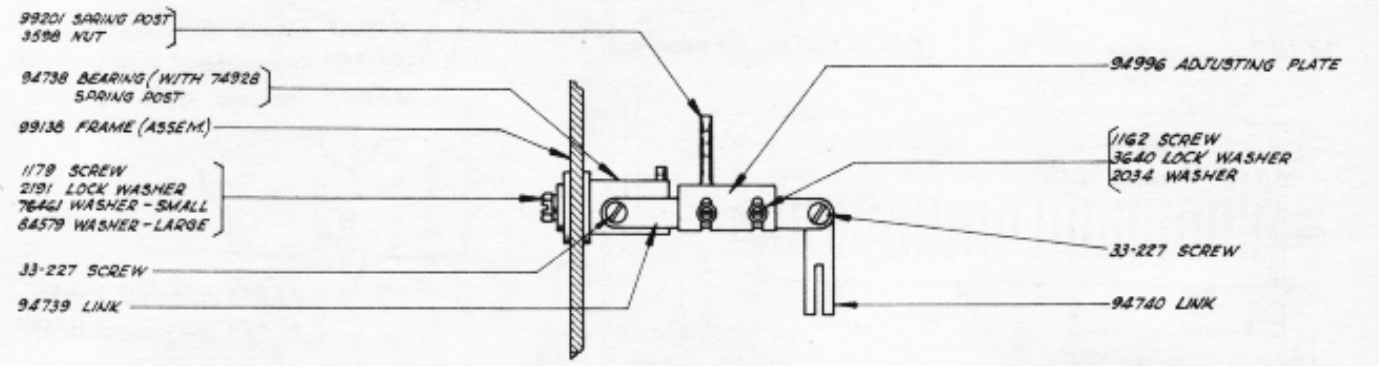
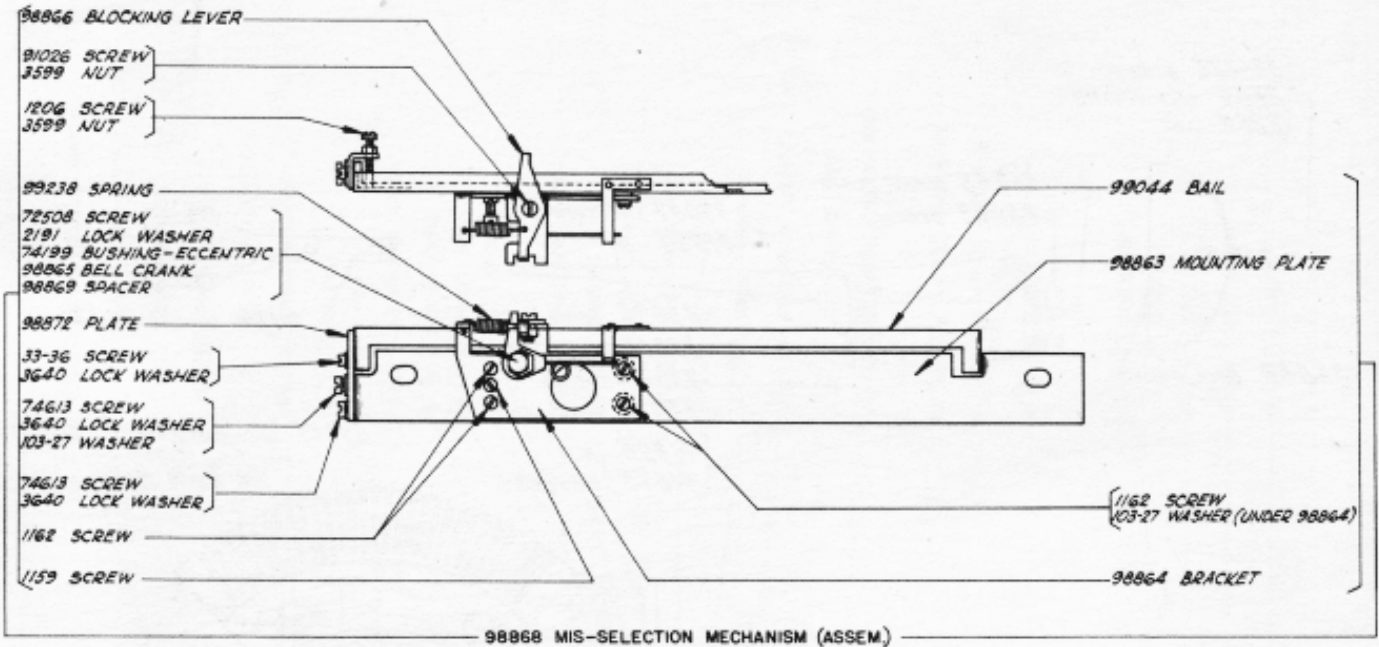


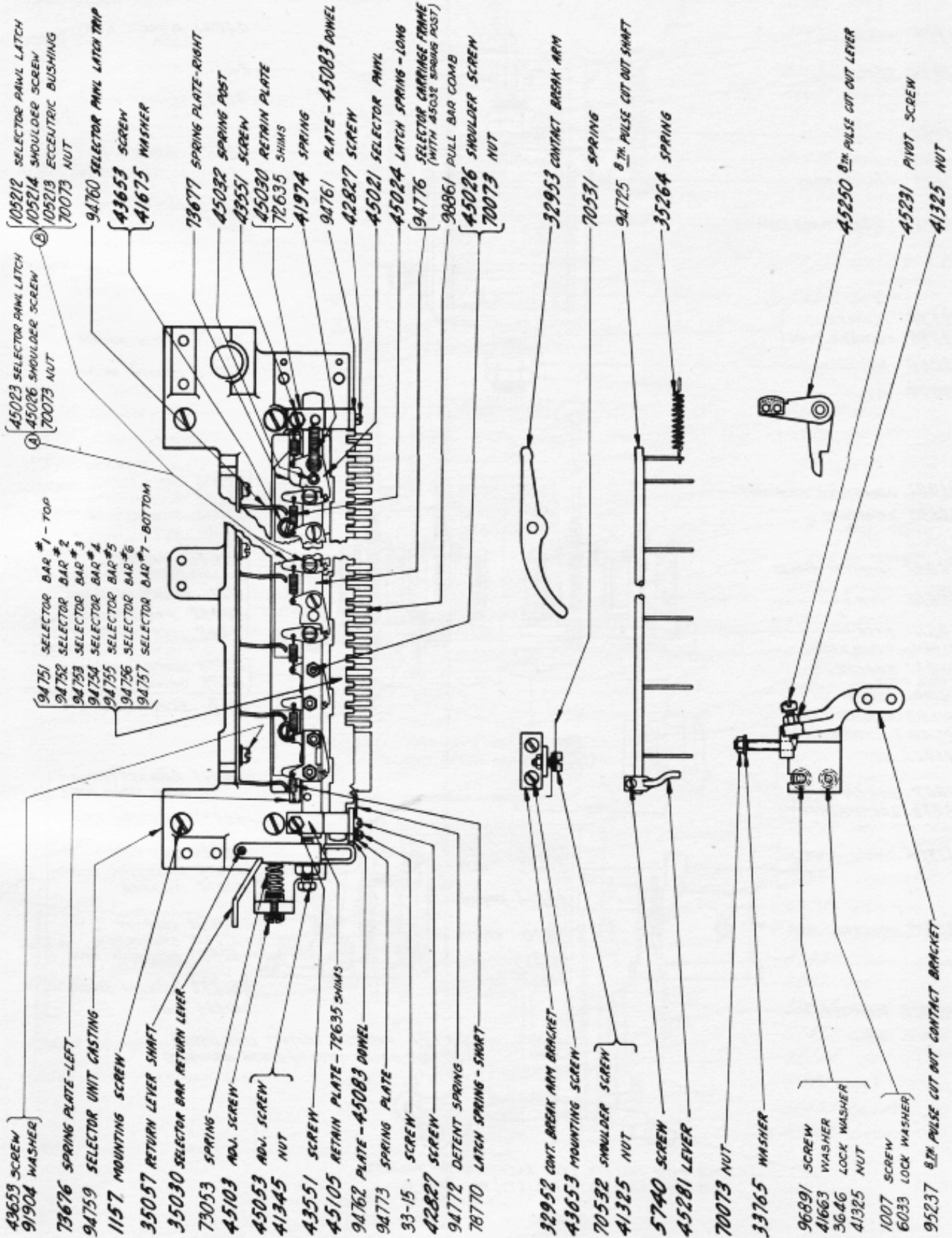




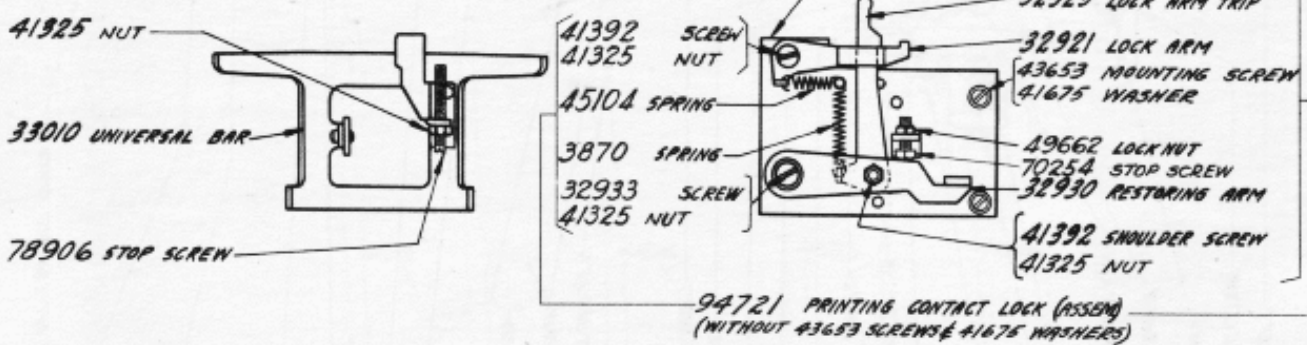
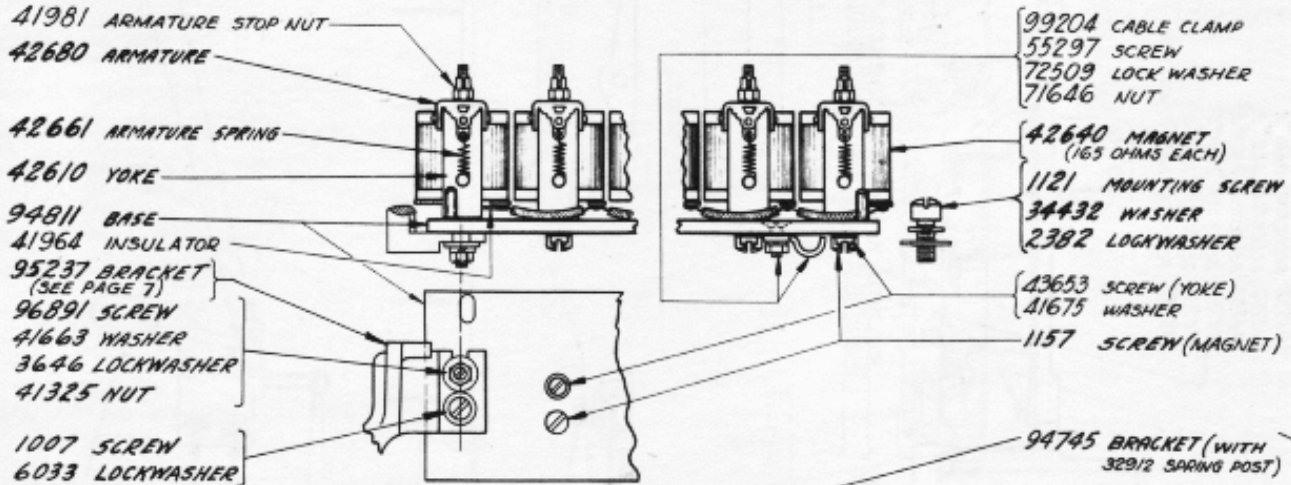
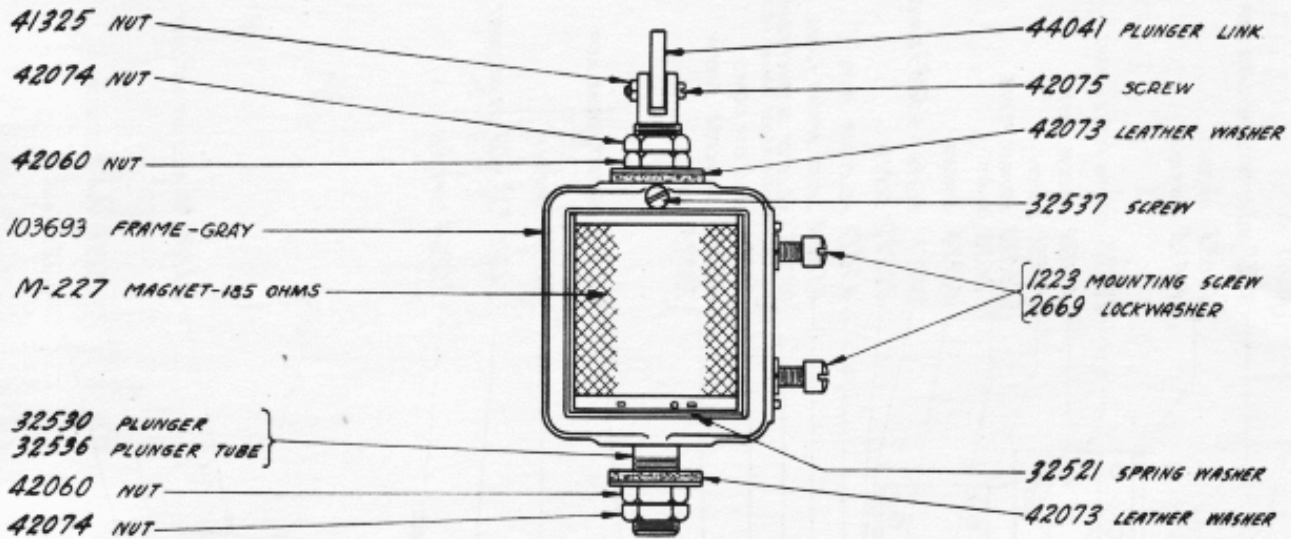


(A) OLD STYLE - RUBBER
(B) NEW STYLE - LEATHER

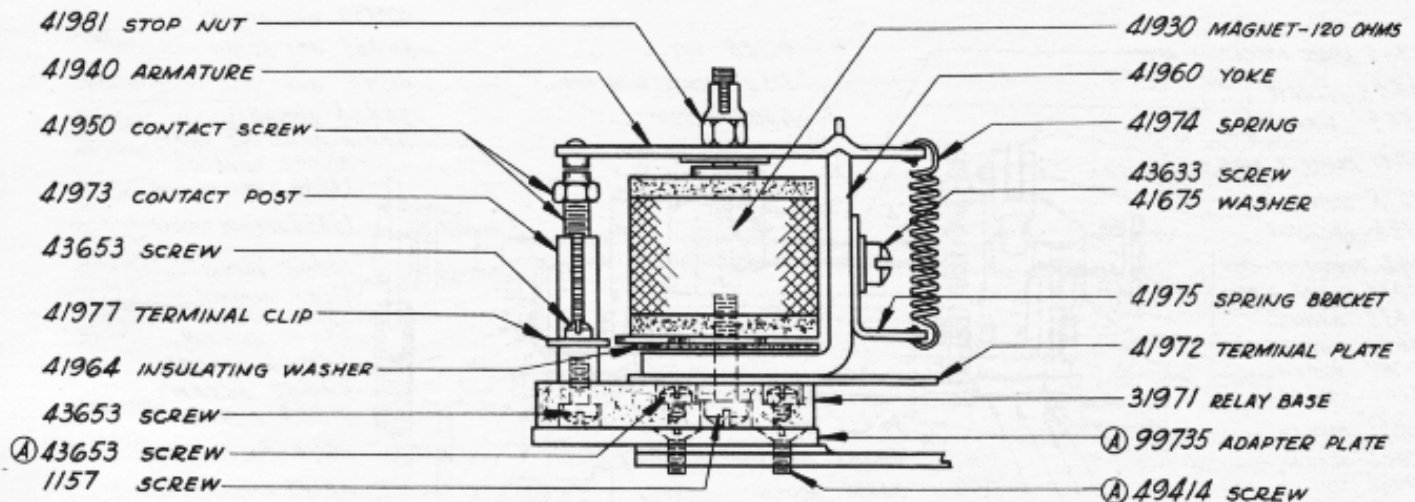




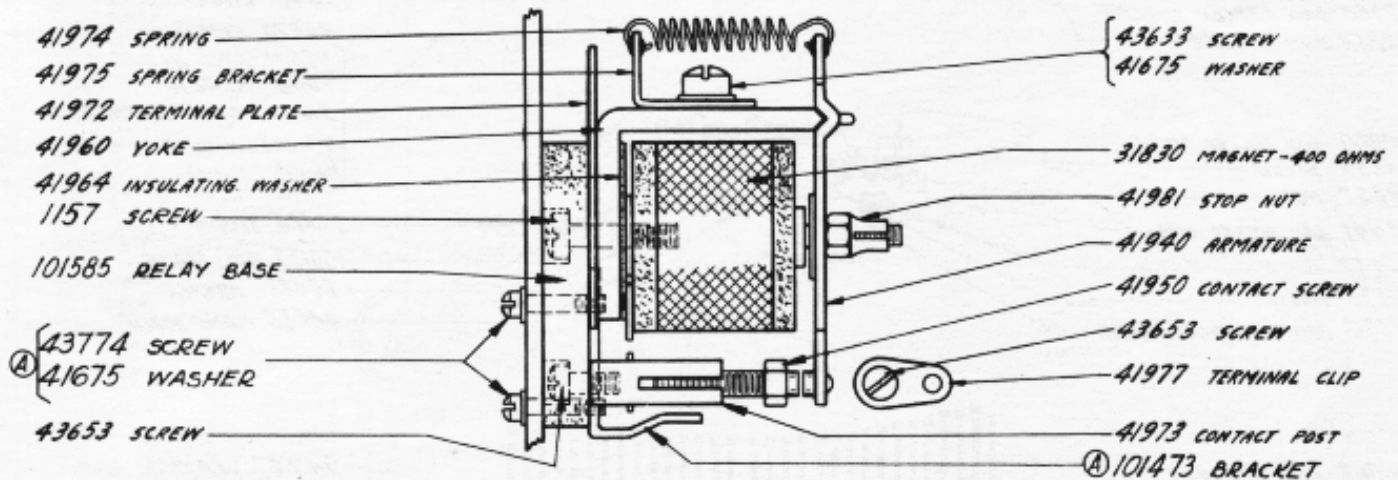
(A) OLD STYLE - NONADJUSTABLE
(B) NEW STYLE - ADJUSTABLE



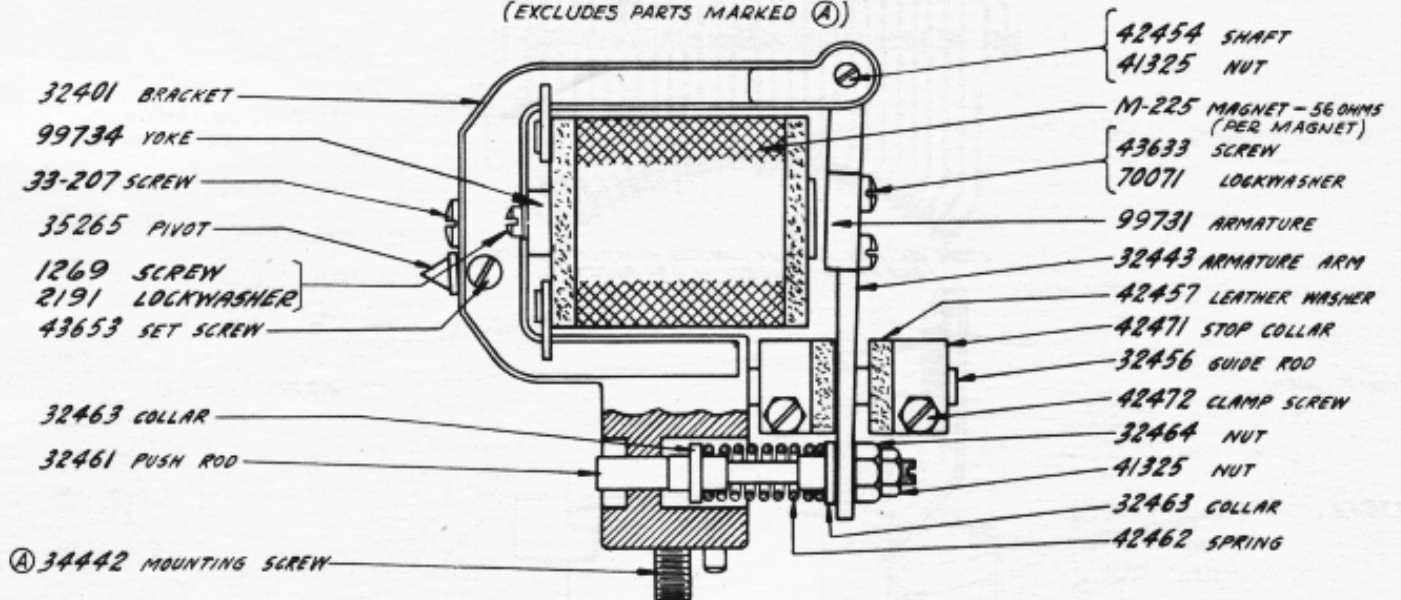
FOR TYPE PALLETS, TYPE BARS (WITHOUT PALLETS)
AND TYPE BARS (WITH PALLETS) SEE PAGE 13.



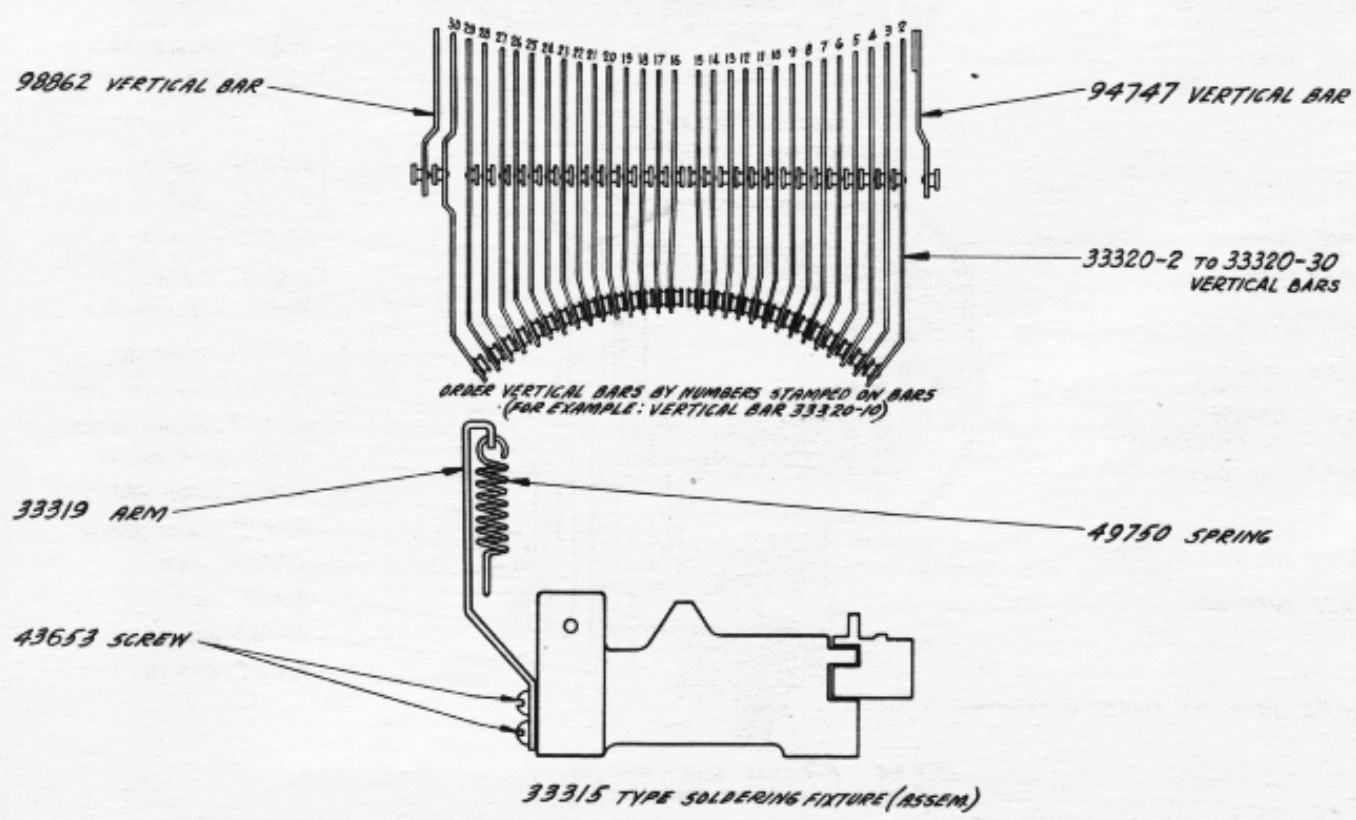
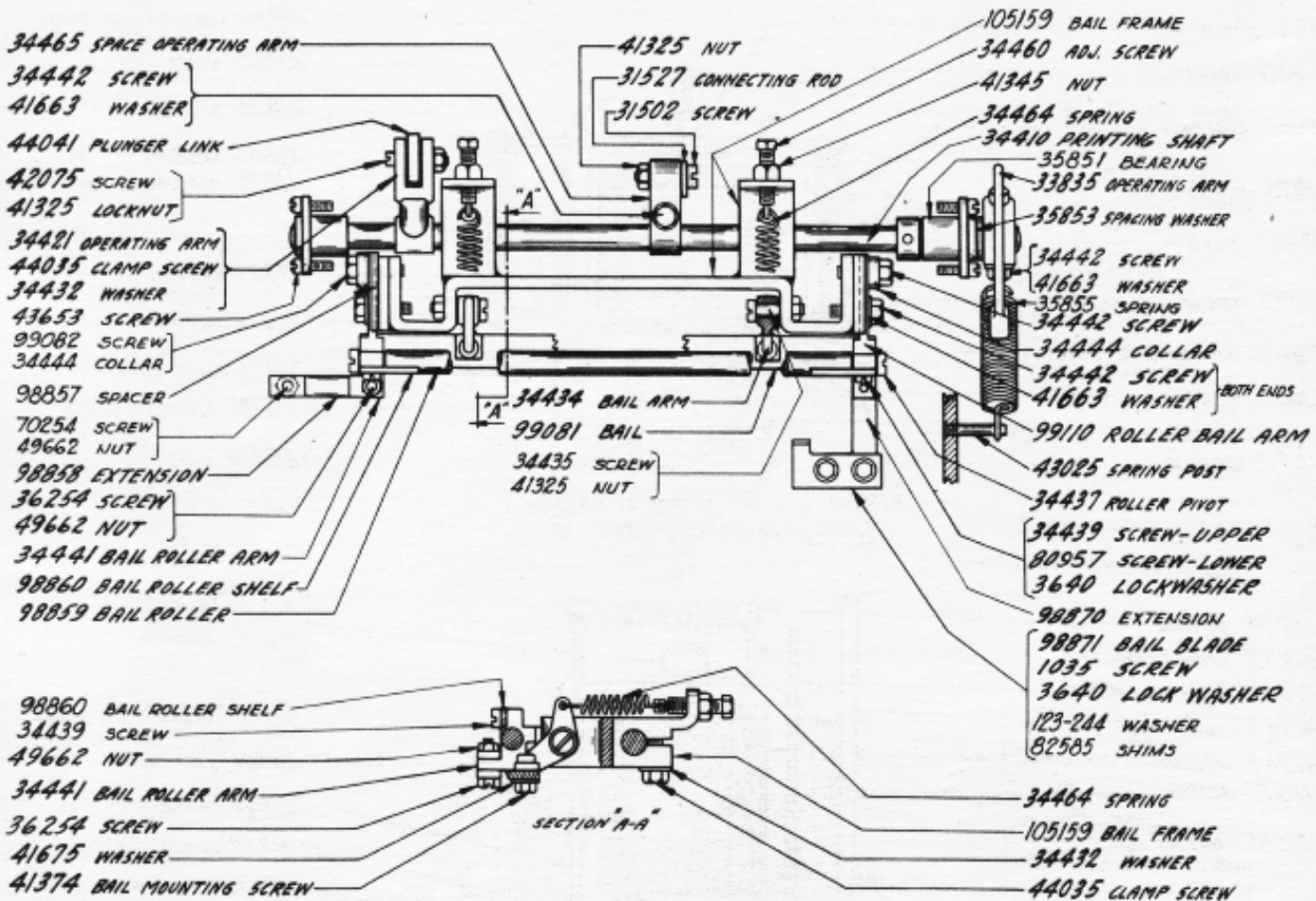
31900 8TH PULSE RELAY (ASSEM.)
(EXCLUDES PARTS MARKED (A))

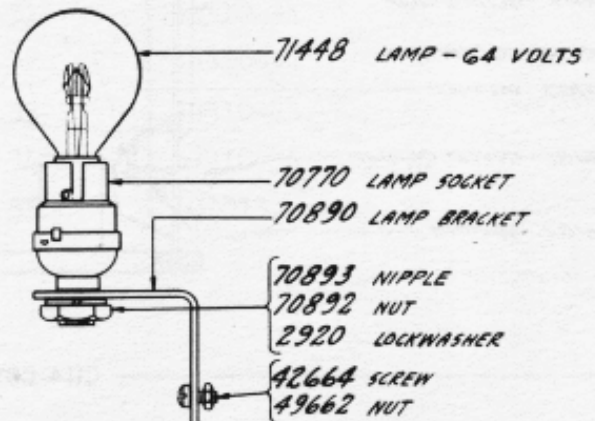
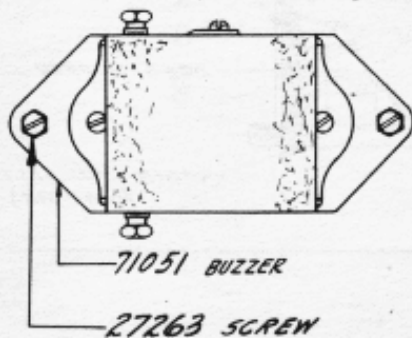
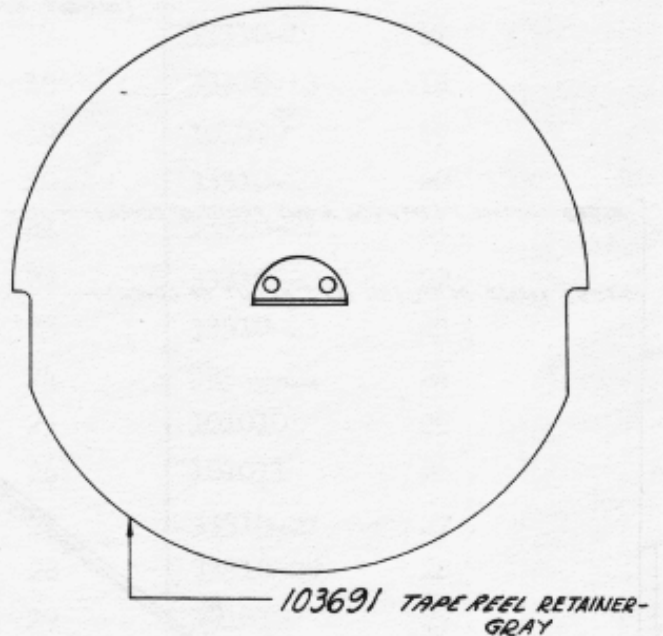
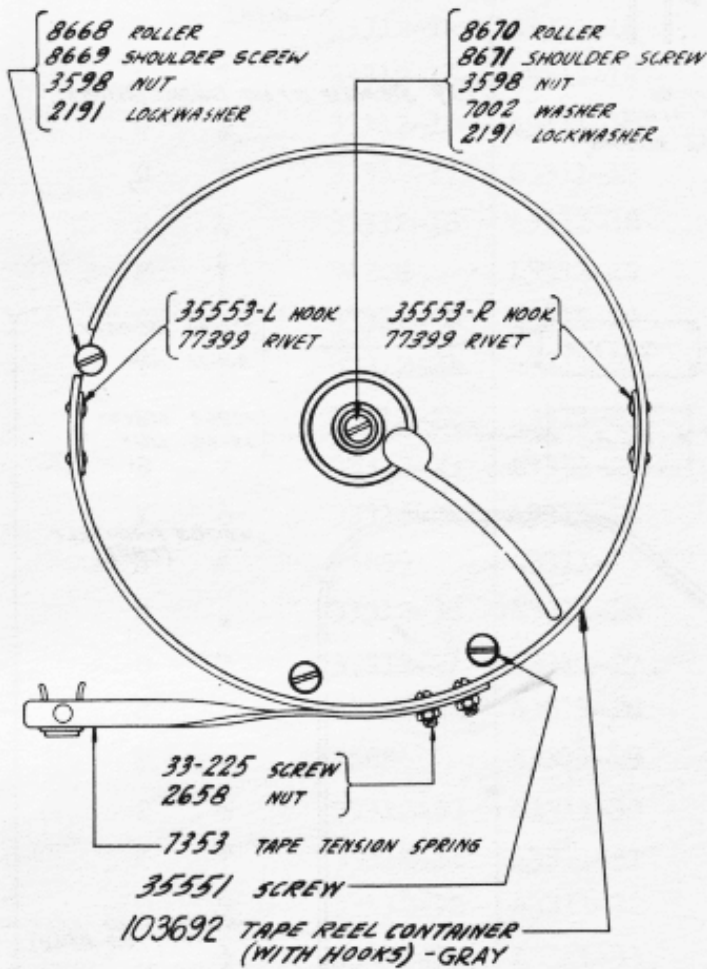
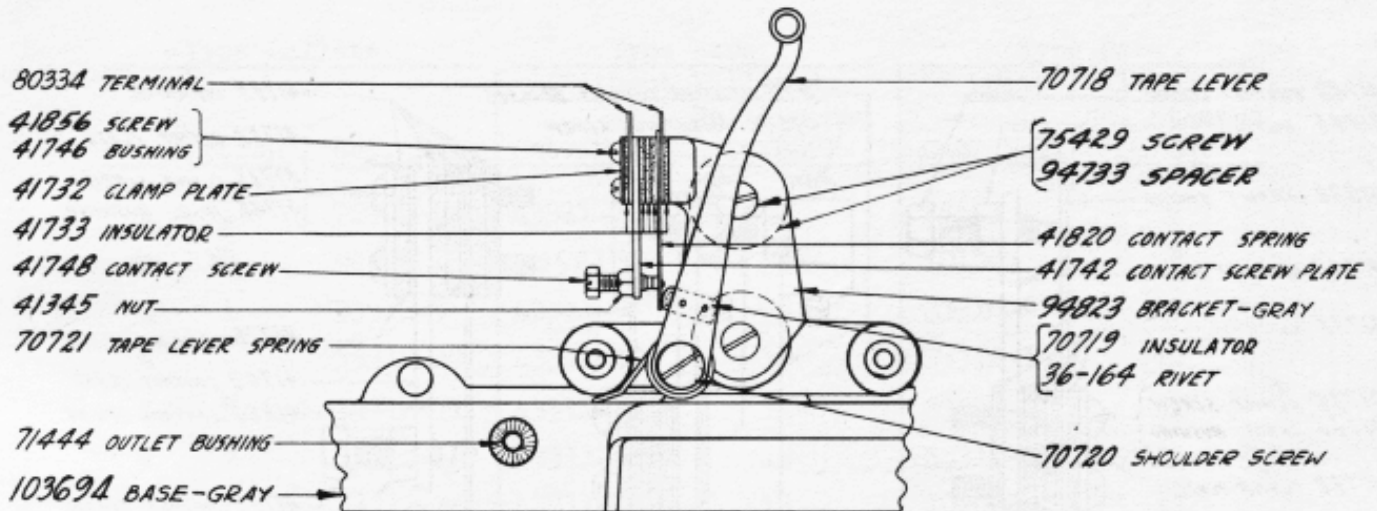


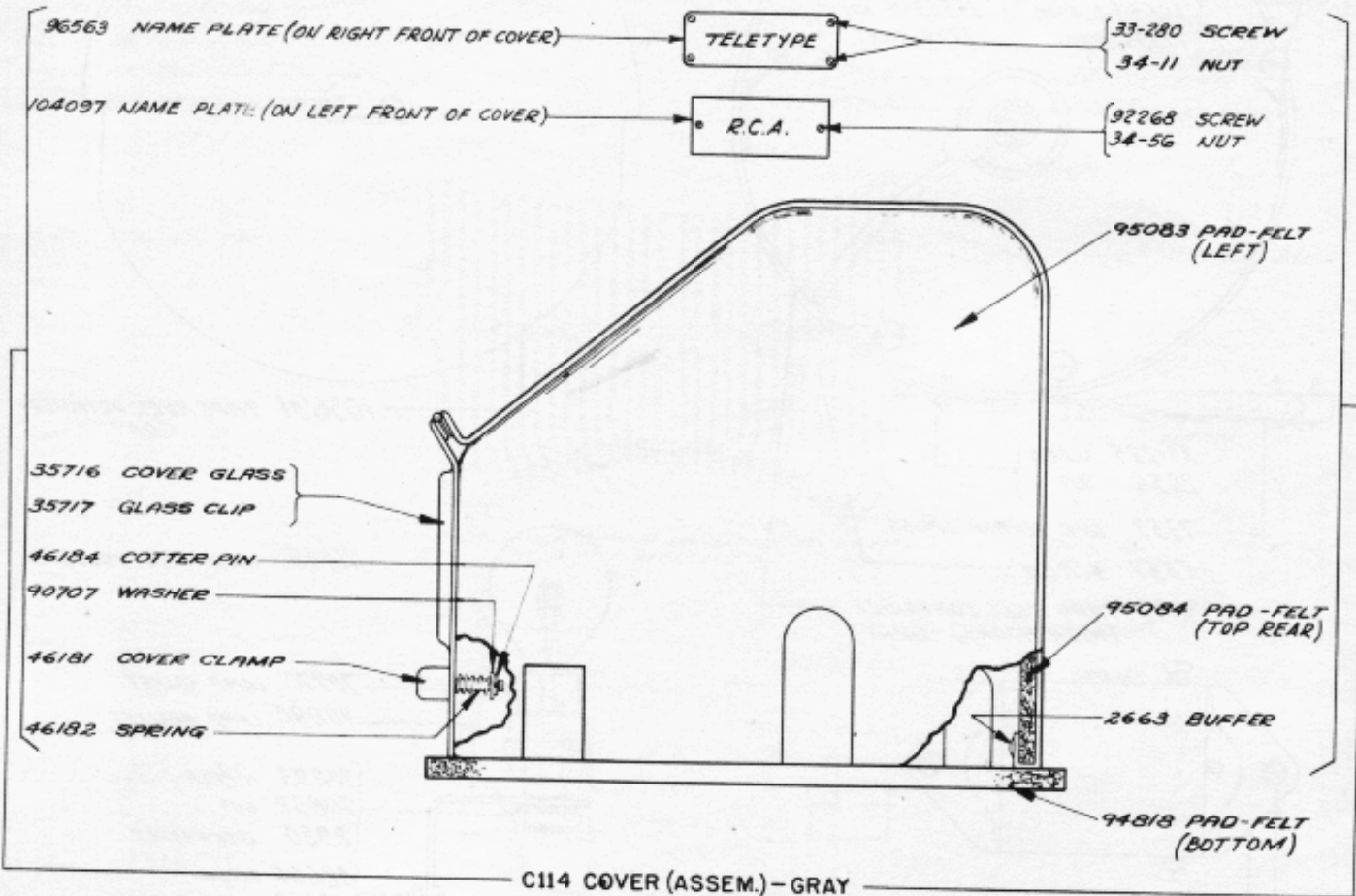
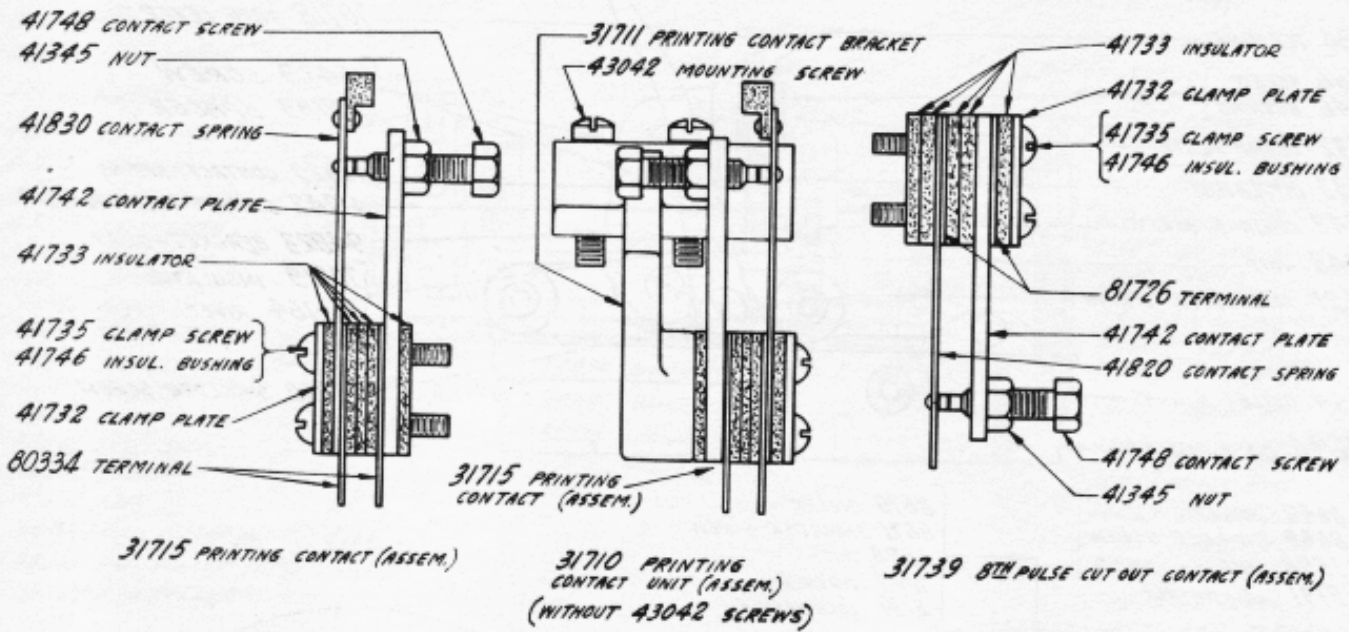
101390 PRINTING RELAY (ASSEM.)
(EXCLUDES PARTS MARKED (A))



101534 8TH PULSE MAGNET UNIT (ASSEM.)
(EXCLUDES PART MARKED (A))







Type Pallets		Type Bars (Without Pallets)		Type Bars (With Pallets)	
Description	Cat. No.	Cat. No.	No. Stamped On Bar	Cat. No.	No. Stamped On Bar
.	, 72990	43311-7	7	75643	7
✠	✠ 94825	105216	8	101007	8
Q	1 33312-9	43311-9	9	33310-9	9
A	- 33312-10	43311-10	10	33310-10	10
Z	W 33312-11	43311-11	11	33310-11	11
W	2 33312-12	43311-12	12	33310-12	12
S	7 33312-36	43311-13	13	101008	13
X	/ 33312-14	43311-14	14	33310-14	14
E	3 33312-15	43311-15	15	33310-15	15
D	\$ 33312-16	43311-16	16	33310-16	16
C	: 33312-17	43311-17	17	33310-17	17
R	4 33312-18	43311-18	18	33310-18	18
F	! 94828	43311-19	19	101009	19
V	; 33312-20	43311-20	20	33310-20	20
T	5 33312-21	43311-21	21	33310-21	21
G	& 33312-22	43311-22	22	33310-22	22
B	? 33312-23	43311-23	23	33310-23	23
Y	6 33312-24	43311-24	24	33310-24	24
H	# 75859	43311-25	25	101010	25
N	, 33312-38	43311-26	26	101011	26
U	7 33312-27	43311-27	27	33310-27	27
J	33312-28	43311-28	28	33310-28	28
M	. 75856	43311-29	29	101012	29
I	8 33312-30	43311-30	30	33310-30	30
K	(33312-31	43311-31	31	33310-31	31
O	9 33312-32	43311-32	32	33310-32	32
L) 33312-33	43311-33	33	33310-33	33
P	0 33312-34	43311-34	34	33310-34	34
=	§ 94824	43311-35	35	101013	35

90707 Washer, 12
91026 Screw (4-40 Shoulder), 6
91904 Washer, 7
92268 Screw (4-40 x 1/8), 1,12
94721 Printing Contact Lock
(Assem.), 8
94725 8th Pulse Cut Out Shaft, 7
94729 Support Block - Right, 1
94730 Spring, 1
94733 Spacer, 11
94738 Bearing (with 74928 Spring
Post), 6
94739 Link, 6
94740 Link, 6
94743 Gong, 1
94744 Bracket, 1
94745 Bracket, 8
94747 Vertical Bar, 5,10

Selector Bars
94751 #1, 7
94752 #2, 7
94753 #3, 7
94754 #4, 7
94755 #5, 7
94756 #6, 7
94757 #7, 7

94759 Selector Unit Casting, 7
94760 Selector Pawl Latch Trip, 7
94761 Plate, 7
94762 Plate, 7
94772 Detent Spring, 7
94773 Spring Plate, 7
94776 Selector Carriage Frame, 7
94811 Base, 8
94818 Pad - Felt, 1,12
94822 Stop Plate, 1
94823 Bracket, 11
94824 Type Pallet (# 2), 13
94825 Type Pallet (# 3), 13
94828 Type Pallet (F !), 13
94996 Adjusting Plate, 6
95083 Pad - Felt (Left), 12
95084 Pad - Felt (Top Rear), 12
95237 8th Pulse Cut Out Contact
Bracket, 7,8
96563 Name Plate, 12
96891 Screw (8-40 Special), 7,8
98854 Fulcrum Rod, 5
98855 Bracket, 5
98856 Collar, 5
98857 Spacer, 10
98858 Extension, 10
98859 Bail Roller, 10
98860 Bail Roller Shelf, 10
98861 Pull Bar Comb, 7
98862 Vertical Bar, 10
98863 Mounting Plate, 6
98864 Bracket, 6
98865 Bell Crank, 6
98866 Blocking Lever, 6
98867 Bracket, 2,5
98868 Mis-selection Mechanism
(Assem.), 6
98869 Spacer, 6
98870 Extension, 10
98871 Bail Blade, 10
98872 Plate, 6
99044 Bail, 6

99080 Retaining Plate, 5
99081 Bail, 10
99082 Screw (8-32 x 11/16), 10
99107 Pull Bar - Mis-selection, 6
99110 Roller Bail Arm, 10
99138 Frame (Assem.), 2,6
99201 Spring Post, 6
99204 Cable Clamp, 8
99238 Spring, 6
99731 Armature, 9
99734 Yoke, 9
99735 Adapter Plate, 9
99738 Printer Cable, 1

Type Bars - (With Pallets)

101007 #8 (S), 13
101008 #13 (S !), 13
101009 #19 (F !), 13
101010 #25 (H #), 13
101011 #26 (N), 13
101012 #29 (M), 13
101013 #35 (= 2), 13

101390 Printing Relay (Assem.), 9
101473 Bracket, 9
101534 8th Pulse Magnet Unit
(Assem.), 9
101585 Relay Base, 9
103690 Plug - 21 Terminals (Assem.),
Gray, 1
103691 Tape Reel Retainer - Gray, 11
103692 Tape Reel Container (with hooks)
Gray, 11
103693 Frame - Gray, 8
103694 Base - Gray, 1
103695 Cable Cap - Gray, 1
103774 Strain Release Collar, 1
104096 Name Plate, 1
104097 Name Plate, 12
104373 Spring, 1
104978 Leather Strip, 5
104979 Type Bar Backstop (Assem.), 5
105059 Bracket, 5
105060 Spring Clip, 5
105078 Mis-selection Type Bar Detent
(Assem.), 5
105159 Bail Frame, 10
105212 Selector Latch Pawl, 7
105213 Eccentric Bushing, 7
105214 Screw (3-48 x 21/64 Shoulder), 7
105216 Type Bar (without pallet) - #8,13
105243 Mounting Plate, 1