

TELETYPE

PRINTING TELEGRAPH SYSTEMS

Tom Bell

*PARTS
MULTIPLEX TAPE PRINTER*



TELETYPE CORPORATION

Formerly MORKRUM-KLEINSCHMIDT CORPORATION

CHICAGO, U. S. A.

TELETYPE

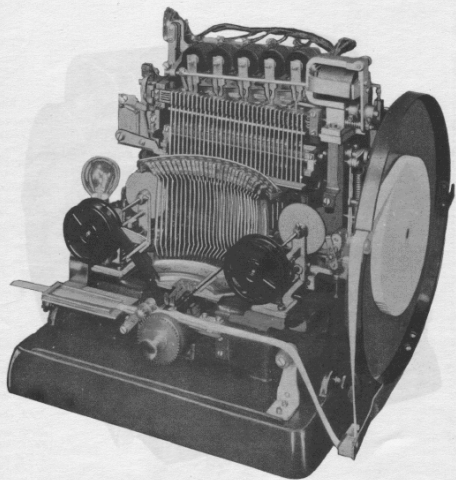
PRINTING TELEGRAPH SYSTEMS

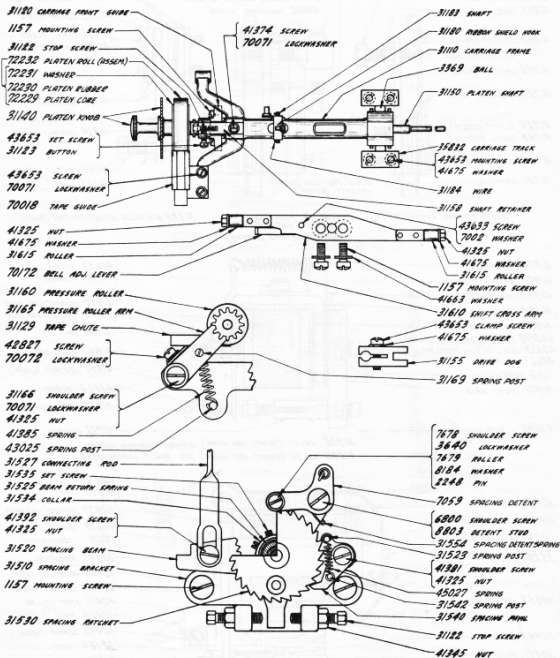
PARTS
MULTIPLEX TAPE PRINTER

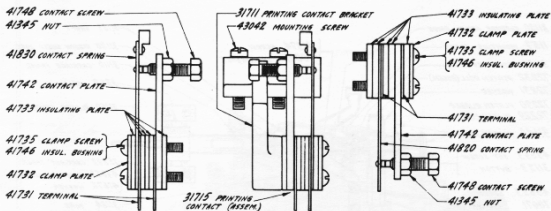


TELETYPE CORPORATION
Formerly MORKRUM-KLEINSCHMIDT CORPORATION
CHICAGO, U. S. A.





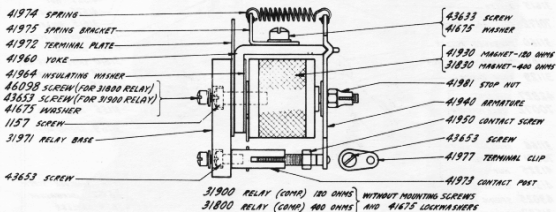




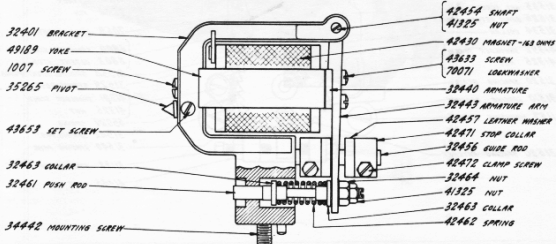
31715 PRINTING CONTACT (ASSEM.)

31710 PRINTING CONTACT UNIT (ASSEM.)
(WITHOUT 43042 SCREWS)

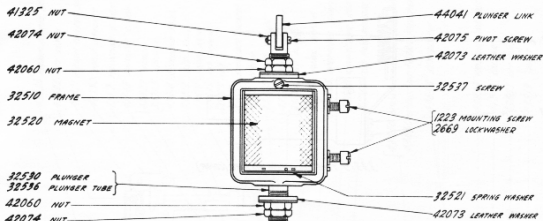
31739 62x PULSE CUT OUT CONTACT (ASSEM.)



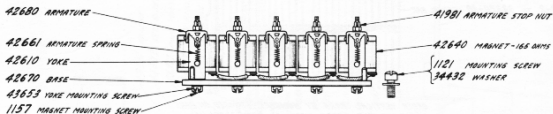
31900 RELAY (COMB) 120 OHMS } WITHOUT MOUNTING SCREWS
31800 RELAY (COMB) 400 OHMS } AND 41675 LOCKWASHERS



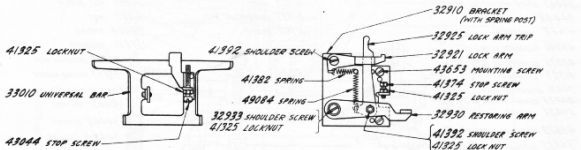
32400 62x PULSE MAGNET UNIT (COMB)
(WITHOUT 34442 SCREWS)



32500 PRINTING SOLENOID UNIT (COMP)
(WITHOUT 1223 SCREWS & 2669 LOCKWASHERS)

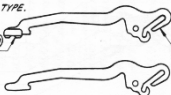


32600 SELECTING MAGNET UNIT (COMP)



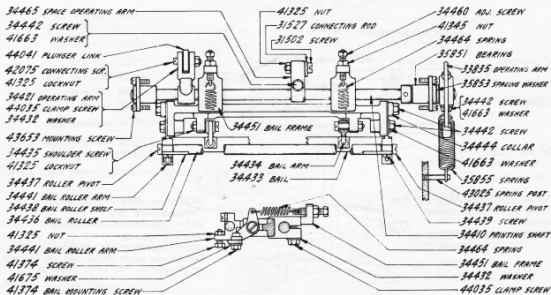
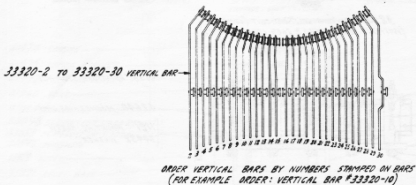
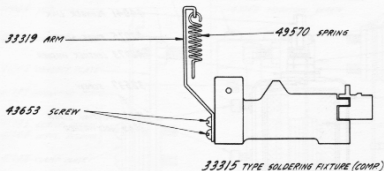
32900 PRINTING CONTACT LOCK (COMP) (WITHOUT 43653 SCREWS)

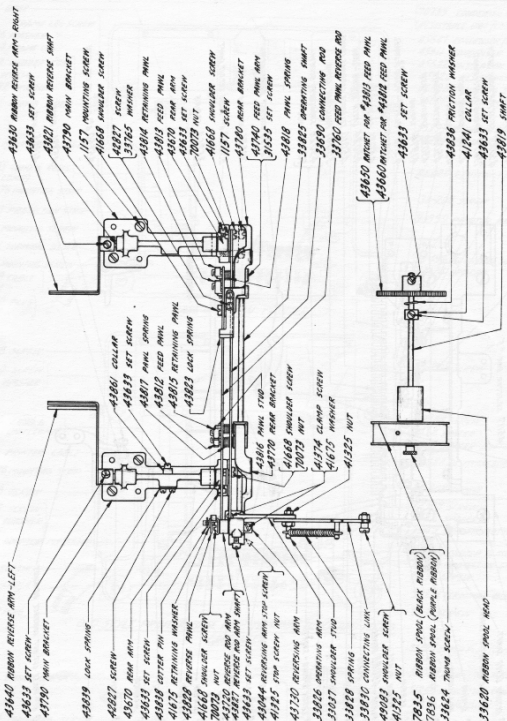
33312-7 AND 33312-9 TO 33312-35 TYPE.
ORDER TYPE BY NUMBERS STAMPED
ON TYPEBARS.
(FOR EXAMPLE ORDER TYPE #33312-20)

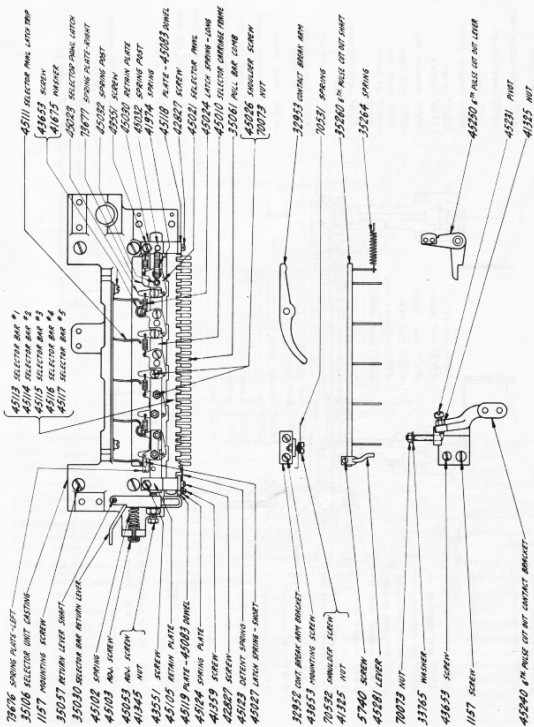


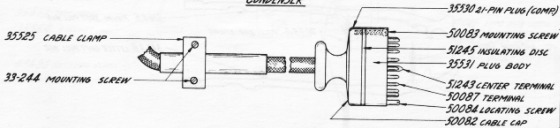
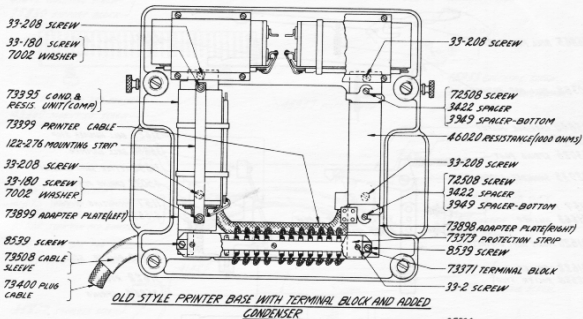
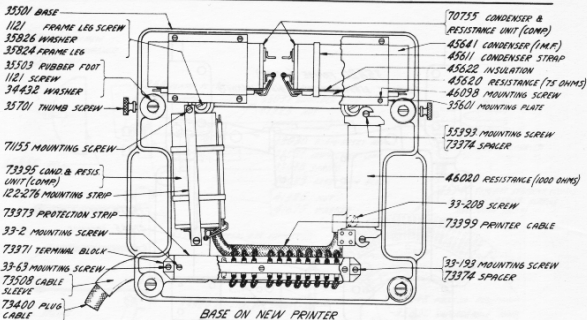
43313 TYPEBAR #8 FOR SPACE

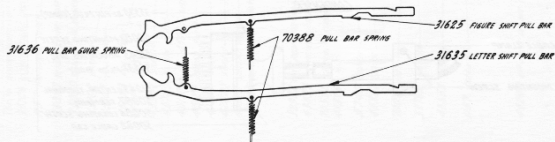
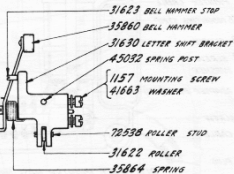
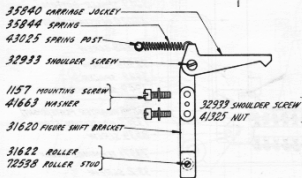
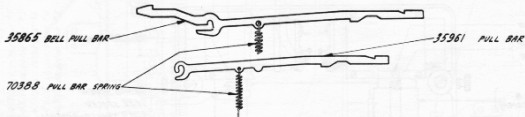
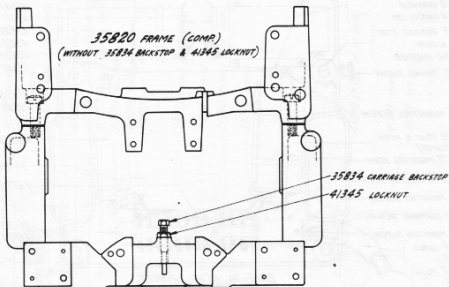
33310-7 AND 33310-9 TO 33310-35
TYPEBARS (WITH TYPE)
43311-7 AND 43311-9 TO 43311-35
TYPEBARS (WITHOUT TYPE)
ORDER TYPEBARS BY NUMBERS STAMPED ON BARS.
(FOR EXAMPLE ORDER TYPEBAR (WITH TYPE) #33310-20
OR TYPEBAR (WITHOUT TYPE) #43311-20)

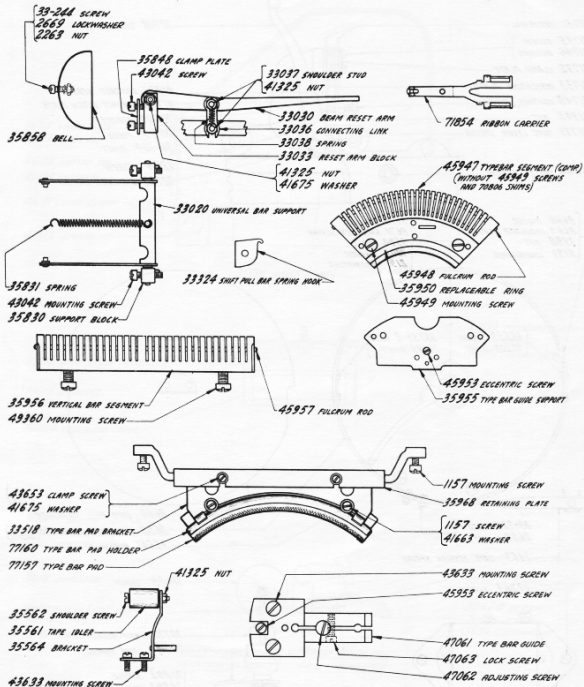


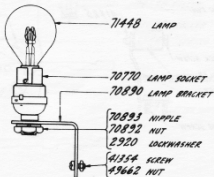
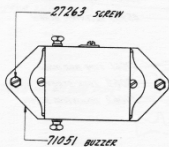
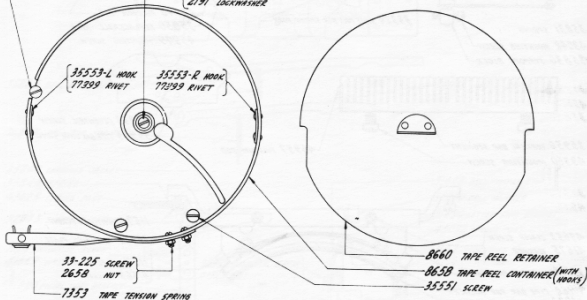
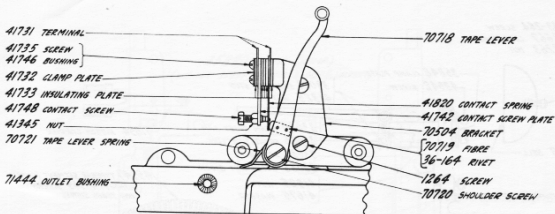


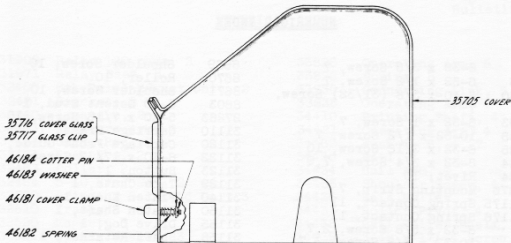












35716 COVER GLASS
35717 GLASS CLIP

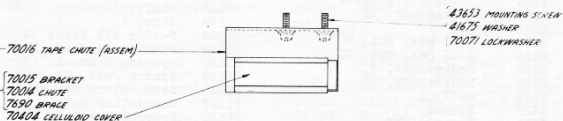
46184 COTTER PIN
46183 WASHER

46181 COVER CLAMP

46182 SPRING

35705 COVER

35700 COVER (COMP)



70016 TAPE CHUTE (ASSEM)

70015 BRACKET
70014 CHUTE
7690 BRACE
70404 CELLULOID COVER

43653 MOUNTING SCREW
41675 WASHER
70071 LOCKWASHER

1178 SCREW
3624 WASHER
3571 BUSHING

3618 INSULATOR

78526 SUPPORT PLATE
(WITH LEVER)
3647 INSULATOR

200-1175 SPRING CONTACT
200-1176 SPRING CONTACT

42664 SCREW
7002 WASHER
3639 LOCKWASHER

78525 SIGNAL CONTACT ASSEMBLY (WITH OUT
MOUNTING SCREW, WASHER & LOCKWASHER)

NUMERICAL INDEX

33-2	6-32 x 3/8 Screw, 7	8669	Shoulder Screw, 10
33-63	6-32 x 1/2 Screw, 7	8670	Roller, 10
33-180	6-40 x 3/8 (31/32) Screw, 7	8671	Shoulder Screw, 10
33-193	6-32 x 1 Screw, 7	8803	8-40 Detent Stud, 1
33-208	10-32 x 1/2 Screw, 7	27263	5-40 x 7/16 Screw, 10
33-225	6-32 x 3/16 Screw, 10	31110	Carriage Frame, 1
33-244	8-32 x 3/4 Screw, 7,9	31120	Carriage Front Guide, 1
36-164	Rivet, 10	31122	8-40 x 17/32 Screw, 1
122-276	Mounting Strip, 7	31123	Button, 1
200-1175	Spring Contact, 11	31129	Tape Chute, 1
200-1176	Spring Contact, 11	31140	Platen Knob, 1
1007	8-32 x 5/8 Screw, 2,7	31150	Platen Shaft, 1
1121	10-32 x 3/8 Screw, 3,7	31155	Drive Dog, 1
1157	8-32 x 1/2 Screw, 1,2,3,5 6,8,9	31158	Shaft Retainer, 1
1178	2-54 x 7/16 Screw, 11	31160	Pressure Roller, 1
1223	10-32 x 1/2 Screw, 3	31165	Pressure Roller Arm, 1
1264	10-32 x 1/2 Screw, 10	31166	Shoulder Screw, 1
2191	Lockwasher, 10	31169	Spring Post, 1
2248	Pin, 1	31180	Ribbon Shield Hook, 1
2263	8-32 Hex. Nut, 9	31183	Shaft, 1
2658	6-32 Hex. Nut, 10	31184	Wire, 1
2629	Lockwasher, 3,9	31502	5-40 x 1/2 Screw, 4
2920	Lockwasher, 10	31510	Spacing Bracket, 1
3369	Ball, 1	31520	Spacing Beam, 1
3422	Spacer, 7	31523	Spring Post, 1
3571	Bushing, 11	31525	Beam Return Spring, 1
3598	6-40 Hex. Nut, 10	31527	Connecting Rod, 1,4
3618	Insulator, 11	31530	Spacing Ratchet, 1
3624	Washer, 11	31534	Collar, 1
3639	Lockwasher, 11	31535	Set Screw, 1,5
3640	Lockwasher, 1	31540	Spacing Pawl, 1
3647	Insulator, 11	31542	Spring Post, 1
3949	Spacer-Bottom, 7	31554	Spacing Detent Spring, 1
5740	2-56 x 1/4 Screw, 6	31610	Shift Cross Arm, 1
8000	Shoulder Screw, 1	31615	Roller, 1
7002	Washer, 1,7,10,11	31620	Figure Shift Bracket, 8
7059	Spacing Detent, 1	31622	Roller, 8
7353	Tape Tension Spring, 10	31623	5-40 Stud, 8
7678	Shoulder Screw, 1	31625	Figure Shift Pull Bar, 8
7679	Roller, 1	31630	Letter Shift Bracket, 8
7690	Brace, 11	31635	Letter Shift Pull Bar, 8
7835	Ribbon Spool (Black), 5	31636	Pull Bar Guide Spring, 8
7836	Ribbon Spool (Purple), 5	31710	Printing Contact Unit, 2
8184	Washer, 1	31711	Printing Contact Bracket, 2
8539	6-40 x 1/2 Screw, 7	31715	Printing Contact(Assem.), 2
8658	Tape Reel Container (With Hooks), 10	31739	6th Pulse Cutout Contact (Assem.), 2
8660	Tape Reel Retainer, 10	31800	Relay 400 ohms, 2
8668	Roller, 10	31830	Magnet 400 ohms, 2

NUMERICAL INDEX

31900	Relay 120 ohms, 2	33826	Operating Arm, 5
31971	Relay Base, 2	33828	Spring, 5
32400	6th Pulse Magnet Unit, 2	33830	Connecting Link, 5
32401	Bracket, 2	33835	Operating Arm, 4
32440	Armature, 2	34410	Printing Shaft, 4
32443	Armature Arm, 2	34421	Operating Arm, 4
32456	Guide Rod, 2	34432	Washer, 3, 4, 7
32461	Push Rod, 2	34433	Bell, 4
32463	Collar, 2	34434	Bell Arm, 4
32464	5-40 Hex. Nut, 2	34435	Shoulder Screw, 4
32500	Printing Solenoid Unit, 3	34436	Bell Roller, 4
32510	Frame, 3	34437	Roller Pivot, 4
32520	Magnet, 3	34438	Bell Roller Shelf, 4
32521	Spring Washer, 3	34439	3-48 x 17/64 Screw, 4
32530	Plunger, 3	34441	Bell Roller Arm, 4
32536	Plunger Tube, 3	34442	8-32 x 1/2 Screw, 2, 4
32537	8-40 x .244 Screw, 3	34444	Collar, 4
32600	Selecting Magnet Unit, 3	34451	Bell Frame, 4
32900	Printing Contact Lock, 3	34460	Adjusting Screw, 4
32910	Bracket (With Spring Post), 3	34464	Spring, 4
32921	Lock Arm, 3	34465	Space Operating Arm, 4
32925	Lock Arm Trip, 3	35030	Selector Bar Return Lever, 6
32930	Restoring Arm, 3	35057	Return Lever Shaft, 6
32933	Shoulder Screw, 3, 8	35061	Pull Bar Comb, 6
32952	Contact Break Arm Bracket, 6	35106	Selector Unit Casting, 6
32953	Contact Break Arm, 6	35260	6th Pulse Cutout Shaft, 6
33010	Universal Bar, 3	35264	Spring, 6
33020	Universal Bar Support, 9	35265	Pivot, 2
33030	Beam Reset Arm, 9	35501	Base, 7
33033	Reset Arm Block, 9	35503	Rubber Foot, 7
33036	Connecting Link, 9	35525	Cable Clamp, 7
33037	5-40 Shoulder Stud, 5, 9	35530	21-Pin Plug (Comp.), 7
33038	Spring, 9	35531	Plug Body, 7
33310	(See Page 17), 3	35551	10-32 x 3/8 Screw, 10
33312	(See Page 17), 3	35553	Hook - L. and R., 10
33315	Type Soldering Fixture, 4	35561	Tape Idler, 9
33319	Arm, 4	35562	Shoulder Screw, 9
33320-2	to 33320-30 Vertical Bar, 4	35564	Bracket, 9
33324	Shift Pull Bar Spring Hook, 9	35601	Mounting Plate, 7
33518	Type Bar Pad Bracket, 9	35700	Cover, (Comp.), 11
33620	Ribbon Spool Head, 5	35701	Thumb Screw, 7, 11
33624	Thumb Screw, 5	35705	Cover, 11
33690	Connecting Rod, 5	35716	Cover Glass, 11
33760	Feed Pawl Reverse Rod, 5	35717	Glass Clip, 11
33765	Washer, 5, 6	35820	Frame (Comp.), 8
33825	Operating Shaft, 5	35824	Frame Leg, 7
		35826	Washer, 7
		35830	Support Block, 9
		35831	Spring, 9

NUMERICAL INDEX

35832	Carriage Track, 1	41981	3-48 Nut, 2,3
35834	8-40 Carriage Backstop, 8	42060	1/2-27 Hex. Nut, 3
35840	Carriage Jockey, 8	42073	Leather Washer, 3
35844	Spring, 8	42074	1/2-27 Hex. Nut, 3
35848	Clamp Plate, 9	42075	5-40 x 1/4 Screw, 3,4
35851	Bearing, 4	42430	Magnet 163 ohms, 2
35853	Spacing Washer, 4	42454	Shaft, 2
35855	Spring, 4	42457	Leather Washer, 2
35858	Bell, 9	42462	Spring, 2
35860	Bell Hammer, 8	42471	Stop Collar, 2
35864	Spring, 8	42472	4-48 x 5/16 Screw, 2
35865	Bell Pull Bar, 8	42610	Yoke, 3
35950	Replaceable Ring, 9	42640	Magnet 165 ohms, 3
35955	Typebar Guide Support, 9	42661	Armature Spring, 3
35956	Vertical Bar Segment, 9	42664	5-40 x 1/4 Screw, 11
35961	Pull Bar, 8	42670	Base, 3
35968	Retaining Plate, 9	42680	Armature, 3
41241	Collar, 5	42827	3-48 x 1/4 Screw, 1,5,6
41325	5-40 Hex. Nut, 1,2,3,4,5, 6,8,9	43025	6-40 Spring Post, 1,4,8
41345	8-40 Hex. Nut, 1,2,4,6,8 10	43042	5-40 x 3/4 Screw, 2,9
41354	5-40 x 1/4 Screw, 10	43044	5-40 x 13/16 Screw, 3,5
41359	2-56 x 1/8 Screw, 6	43311	(See Page 17), 3
41374	5-40 x 5/16 Screw, 1,3,4,5	43313	Type Bar For Space, 3
41381	Shoulder Screw, 1	43551	5-40 x 5/16 Screw, 6
41382	Spring, 3	43630	Ribbon Reverse Arm - Right, 5
41385	Spring, 1	43633	5-40 x 3/16 Screw, 1,2,5,9
41392	Shoulder Screw, 1, 3	43640	Ribbon Reverse Arm - Left, 5
41663	Washer, 1, 4, 8, 9	43650	Ratchet, 5
41668	Shoulder Screw, 5	43653	5-40 x 5/16 Screw, 1,2,3,4, 6,9,11
41675	Washer, 1,2,4,5,6,9,11	43660	Ratchet, 5
41731	Terminal, 2, 10	43670	Rear Arm, 5
41732	Clamp Plate, 2, 10	43720	Reverse Rod Arm, 5
41733	Insulating Plate, 2, 10	43730	Reversing Arm, 5
41735	4-36 x 5/8 Screw, 2, 10	43740	Feed Pawl Arm, 5
41742	Contact Screw Plate, 2, 10	43770	Rear Bracket, 5
41746	Insulating Bushing, 2, 10	43780	Rear Bracket, 5
41748	Contact Screw, 2, 10	43790	Main Bracket, 5
41820	Contact Spring, 2, 10	43812	Feed Pawl, 5
41830	Contact Spring, 2	43813	Feed Pawl, 5
41930	Magnet 120 ohms, 2	43814	Retaining Pawl, 5
41940	Armature, 2	43815	Retaining Pawl, 5
41950	Contact Screw, 2	43816	2-56 Pawl Stud, 5
41960	Yoke, 2	43817	Pawl Spring, 5
41964	Insulating Washer, 2	43818	Pawl Spring, 5
41972	Terminal Plate, 2	43819	Shaft, 5
41973	Contact Post, 2	43821	Ribbon Reverse Shaft, 5
41974	Spring, 2, 6	43823	Lock Spring, 5
41975	Spring Bracket, 2		
41977	Terminal Clip, 2		

NUMERICAL INDEX

43827	Reverse Rod Arm Shaft, 5	48184	Cotter Pin, 11
43828	Reverse Pawl, 5	47081	Typebar Guide, 9
43836	Friction Washer, 5	47082	Adjusting Screw, 9
43838	Cotter Pin, 5	47083	Lock Screw, 9
43839	Lock Spring, 5	49083	Shoulder Screw, 5
43861	Collar, 5	49084	Spring, 3
44035	10-32 x 9/16 Screw, 4	49189	Yoke, 2
44041	Plunger Link, 3,4	49380	14-24 x 7/8 Screw, 9
45010	Selector Carriage Frame,6	49570	Spring, 4
45021	Selector Pawl, 6	49662	5-40 Hex. Nut, 10
45023	Selector Pawl Latch, 6	50082	Cable Cap, 7
45024	Latch Spring - Long,6	50083	6-32 x 1 1/16 Screw, 7
45026	Shoulder Screw, 6	50084	Locating Screw, 7
45027	Spring, 1, 6	50087	Terminal, 7
45030	Retaining Plate, 6	51243	Center Terminal, 7
45032	Spring Post, 6,8	51245	Insulating Disc, 7
45053	8-40 x 1/2 Screw, 6	55393	6-32 x 7/8 Screw, 7
45083	Dowel, 6	70014	Chute, 11
45102	Spring, 6	70015	Bracket, 11
45103	Adjusting Screw, 6	70016	Tape Chute (Assem.), 11
45105	Retaining Plate, 6	70018	Tape Guide, 1
45111	Selector Pawl Latch Trip, 6	70071	Lockwasher, 1, 2, 11
45113	Selector Bar #1, 6	70072	Lockwasher, 1
45114	Selector Bar #2, 6	70073	3-48 Hex. Nut, 5,6
45115	Selector Bar #3, 6	70172	Bell Adjustment Lever, 1
45116	Selector Bar #4, 6	70388	Pull Bar Spring, 8
45117	Selector Bar #5, 6	70404	Celluloid Cover, 11
45118	Plate, 6	70504	Bracket, 10
45119	Plate, 6	70531	Spring, 6
45123	Detent Spring, 6	70532	Shoulder Screw, 6
45124	Spring Plate, 6	70718	Tape Lever, 10
45231	5-40 Pivot, 6	70719	Fibre, 10
45240	Bracket, 6	70720	Shoulder Screw, 10
45250	6th Pulse Cutout Lever,6	70721	Tape Lever Spring, 10
45281	Lever, 6	70755	Condenser and Resistance Unit (Assem.), 7
45611	Condenser Strap, 7	70770	Lamp Socket, 10
45620	Resistance (75 ohms), 7	70808	Shim, 9
45622	Insulation, 7	70890	Lamp Bracket, 10
45641	Condenser 1 M.F., 7	70892	1/8-27 Hex. Nut, 10
45947	Typebar Segment, 9	70893	Nipple, 10
45948	Fulcrum Rod, 9	71051	Buzzer, 10
45949	8-32 x 25/64 Screw, 9	71155	6-32 x 1 1/4 Screw, 7
45953	Eccentric Screw, 9	71444	Outlet Bushing, 10
45957	Fulcrum Rod, 9	71448	Lamp, 10
46020	Resistance (1000 ohms),7	71854	Ribbon Carrier, 9
46098	5-40 x 1/2 Screw,3,7	72229	Platen Core, 1
46181	Cover Clamp, 11	72230	Platen Rubber, 1
46182	Spring, 11	72231	Washer, 1
46183	Washer, 11		

NUMERICAL INDEX

72232	Platen Roll (Assem.), 1	73677	Spring Plate - Right, 6
72508	6-40 x 3/4 Screw, 7	73898	Adapter Plate - Right, 6
72538	Roller Stud, 8	73899	Adapter Plate - Left, 7
72990	See Page 17	75640	See Page 17
72991	See Page 17	75641	See Page 17
73371	Terminal Block, 7	75642	See Page 17
73373	Protection Strip, 7	75643	See Page 17
73374	Spacer, 7	77157	Type Bar Pad, 9
73395	Condenser and Resistance Unit (Comp.), 7	77160	Type Bar Pad Holder, 9
73399	Printer Cable, 7	77399	Rivet, 10
73400	Plug Cable, 7	78525	Signal Contacts (Assem.), 11
73508	Cable Sleeve, 7	78526	Support Plate (With Lever), 11
73676	Spring Plate - Left, 6		

<u>TYPEBAR WITH TYPE</u>	<u>TYPEBAR</u>	<u>TYPE</u>	<u>NO. ON TYPEBAR</u>	<u>LOWER CASE</u>	<u>UPPER CASE</u>
33310-7	43311-7	33312-7	#7	,	#
75643-7	43311-7	72990-7	#7	.	,
	43313		#8		
33310-9	43311-9	33312-9	#9	Q	1
33310-10	43311-10	33312-10	#10	A	-
33310-11	43311-11	33312-11	#11	Z	"
33310-12	43311-12	33312-12	#12	W	2
33310-13	43311-13	33312-13	#13	S	
75641-13	43311-13	75640-13	#13	S	9
33310-14	43311-14	33312-14	#14	X	/
33310-15	43311-15	33312-15	#15	E	3
33310-16	43311-16	33312-16	#16	D	\$
33310-17	43311-17	33312-17	#17	C	:
33310-18	43311-18	33312-18	#18	R	4
33310-19	43311-19	33312-19	#19	F	
33310-20	43311-20	33312-20	#20	V	;
33310-21	43311-21	33312-21	#21	T	5
33310-22	43311-22	33312-22	#22	G	&
33310-23	43311-23	33312-23	#23	B	?
33310-24	43311-24	33312-24	#24	Y	6
33310-25	43311-25	33312-25	#25	H	L
33310-26	43311-26	33312-26	#26	N	'
33310-27	43311-27	33312-27	#27	U	7
33310-28	43311-28	33312-28	#28	J	
33310-29	43311-29	33312-29	#29	M	%
33310-30	43311-30	33312-30	#30	I	8
33310-31	43311-31	33312-31	#31	K	(
33310-32	43311-32	33312-32	#32	O	9
33310-33	43311-33	33312-33	#33	L)
33310-34	43311-34	33312-34	#34	P	0
33310-35	43311-35	33312-35	#35	.	.
75642-35	43311-35	72991-35	#35	=	#