

Bulletin No. 1090  
Issue 2  
February, 1942

#5

# TELETYPE

PRINTING TELEGRAPH SYSTEMS

PARTS  
PERFORATOR TRANSMITTER  
(MODEL 15)

**TELETYPE**

CORPORATION

SUBSIDIARY OF

*Western Electric Company*

CHICAGO, U.S.A.

# TELETYPE

PRINTING TELEGRAPH SYSTEMS

PARTS  
PERFORATOR TRANSMITTER  
(MODEL 15)

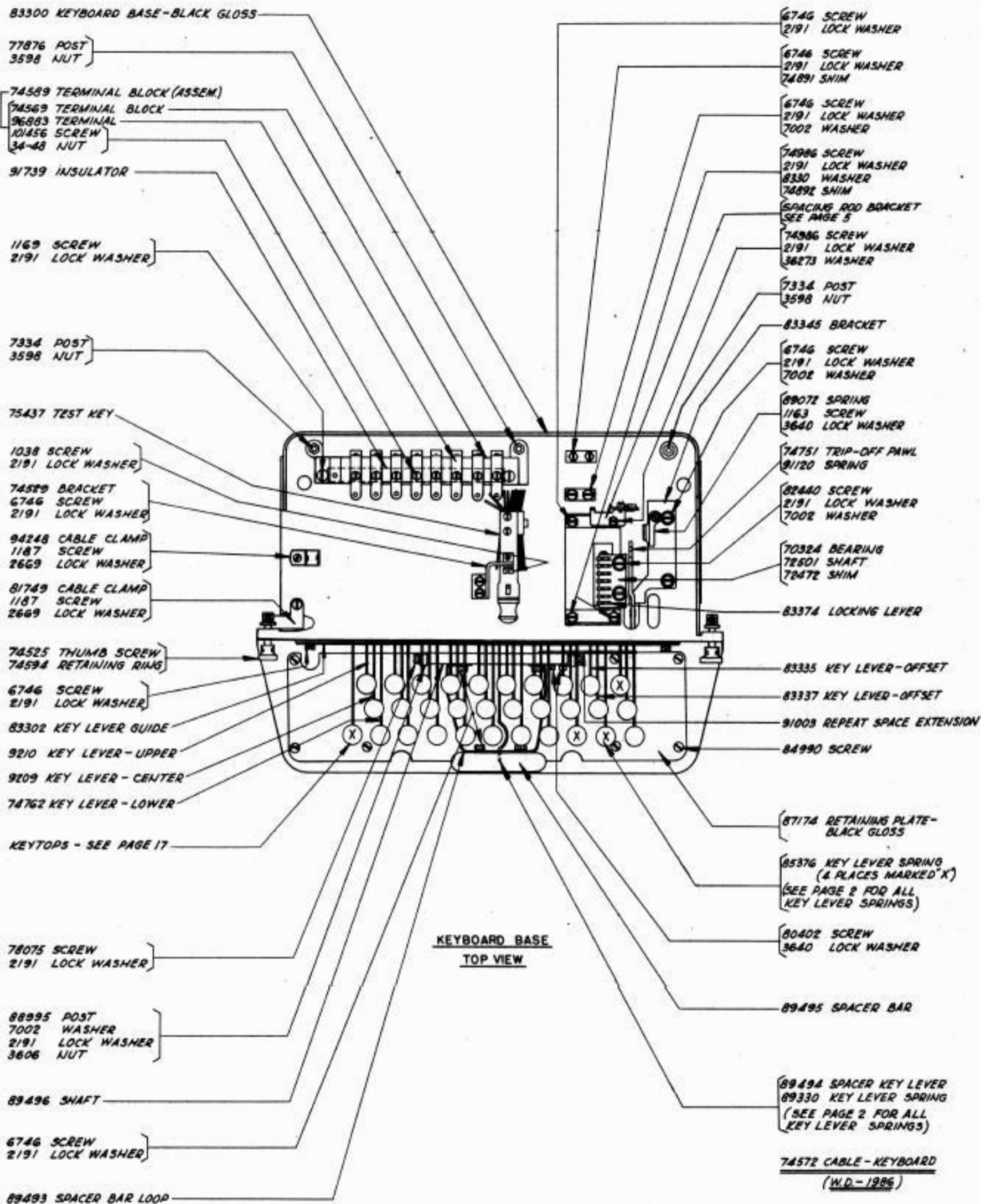


CORPORATION

SUBSIDIARY OF

*Western Electric Company*

CHICAGO, U.S.A.



83300 KEYBOARD BASE - BLACK GLOSS

1038 SCREW  
2191 LOCK WASHER  
7002 WASHER

74986 SCREW  
2191 LOCK WASHER  
7002 WASHER  
91565 SHIM

81433 SHIM

74986 SCREW  
2191 LOCK WASHER  
7002 WASHER

94248 CABLE CLAMP (.156" RAD.)  
OR  
94249 CABLE CLAMP (.218" RAD.)  
1187 SCREW  
2669 LOCK WASHER

89354 STRAP  
1268 SCREW

70319 UPSTOP - LEATHER

85376 KEY LEVER SPRING  
(4 USED - SEE PAGE 1)

2565 KEY LEVER SPRING  
(27 USED)

89330 KEY LEVER SPRING  
(1 USED) - SEE PAGE 1

77698 BOLT  
83355 WASHER - FIBRE  
2669 LOCK WASHER  
2922 NUT

6746 SCREW  
2191 LOCK WASHER  
70314 WASHER

83356 BRACKET

83353 CONDENSER COVER

1038 SCREW  
2191 LOCK WASHER  
7002 WASHER

78011 CONDENSER - 1MF  
EACH

74986 SCREW  
2191 LOCK WASHER  
7002 WASHER  
91565 SHIM

83854 INSULATING CLOTH

81433 SHIM

74986 SCREW  
2191 LOCK WASHER  
7002 WASHER

1248 SCREW

83335 KEY LEVER - OFFSET

83337 KEY LEVER - OFFSET

8539 SCREW  
2191 LOCK WASHER  
7002 WASHER

6746 SCREW  
2191 LOCK WASHER

83303 SPRING PLATE

3598 NUT  
2191 LOCK WASHER

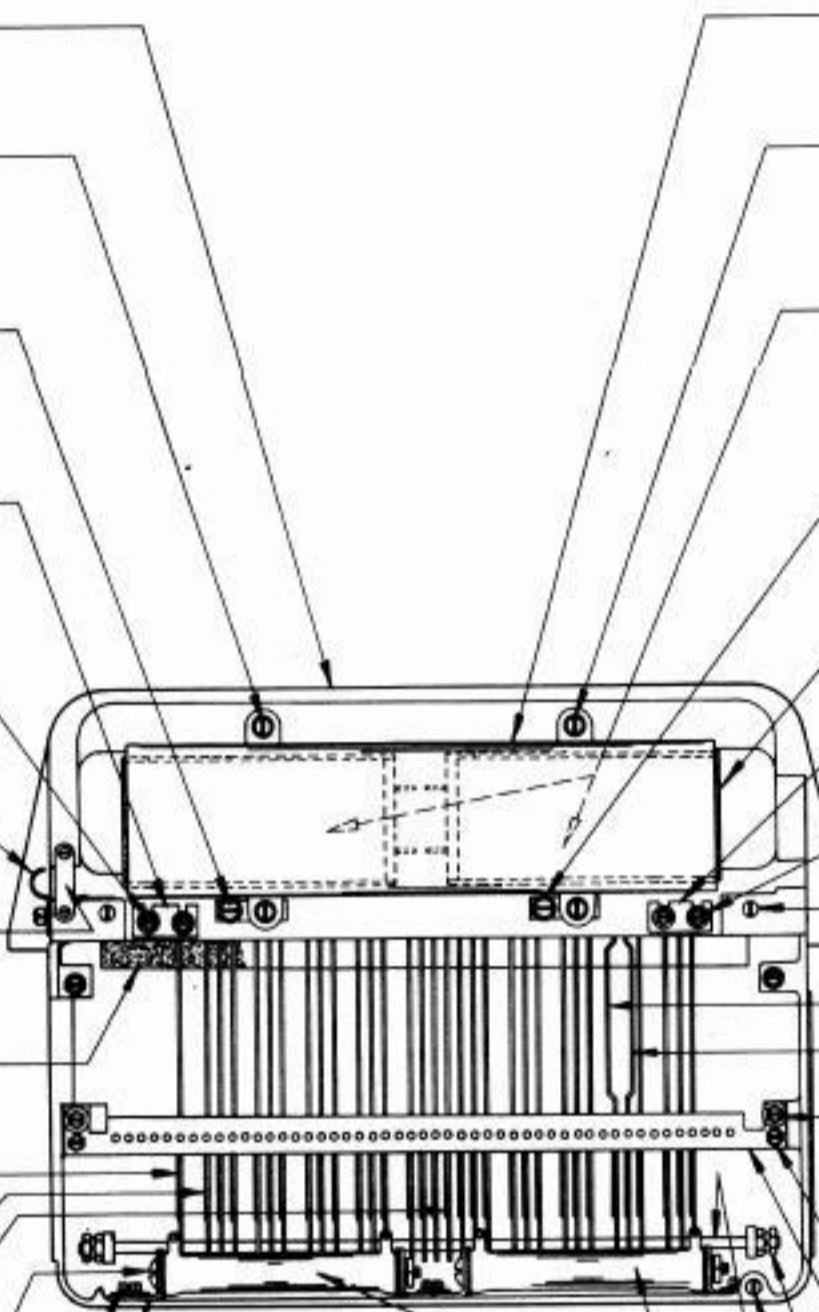
1248 SCREW

83338 SHAFT

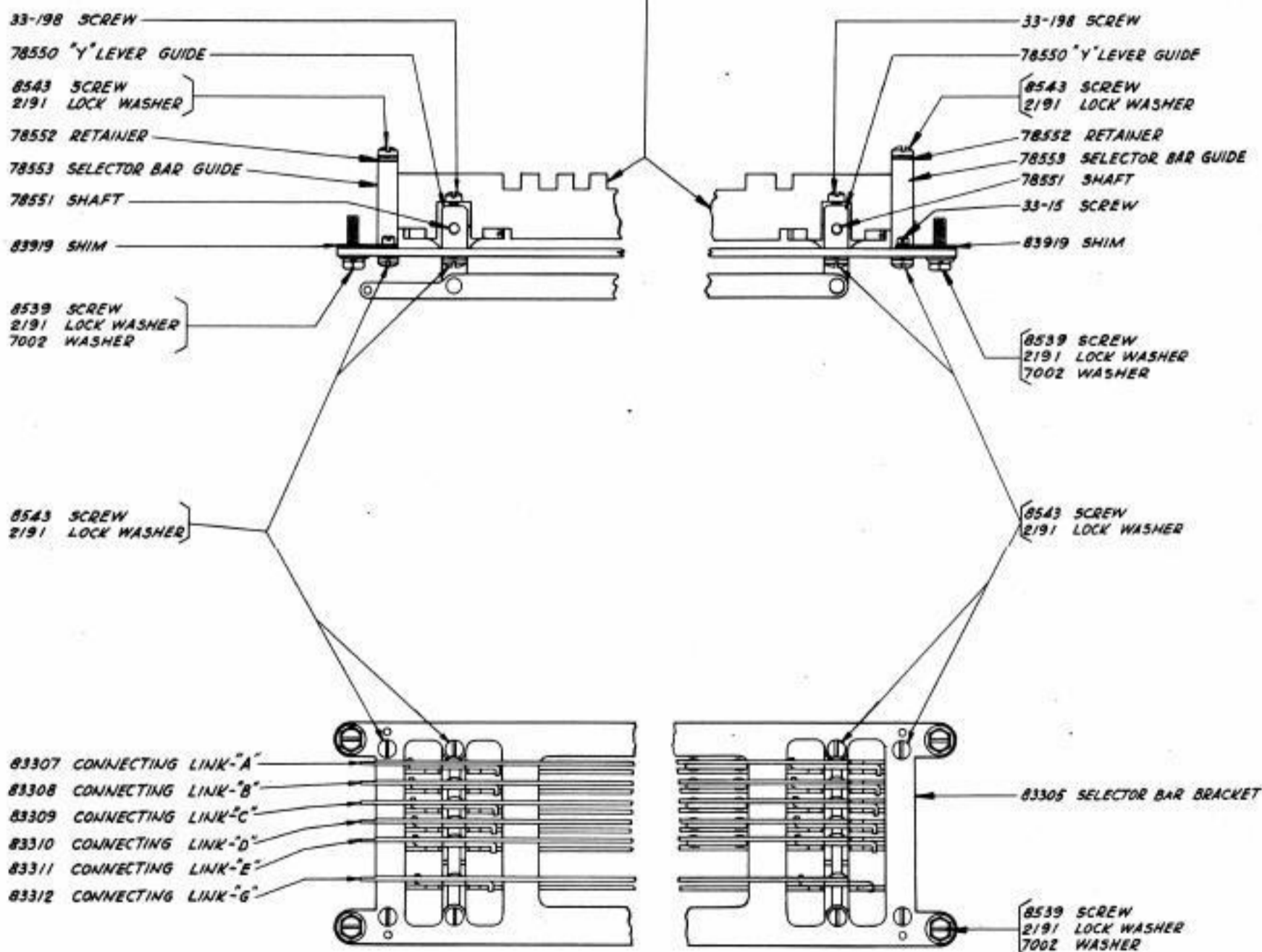
81755 RESISTOR - 200  
OHMS EACH

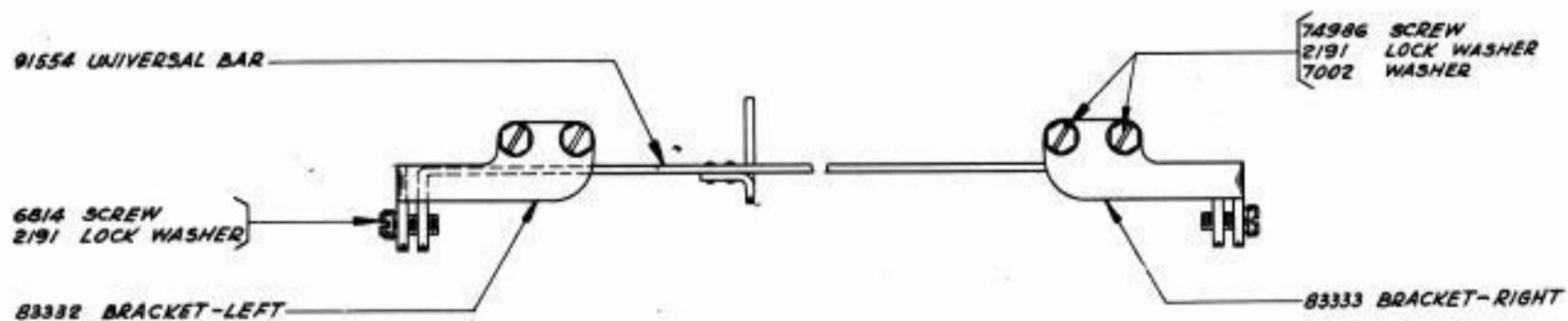
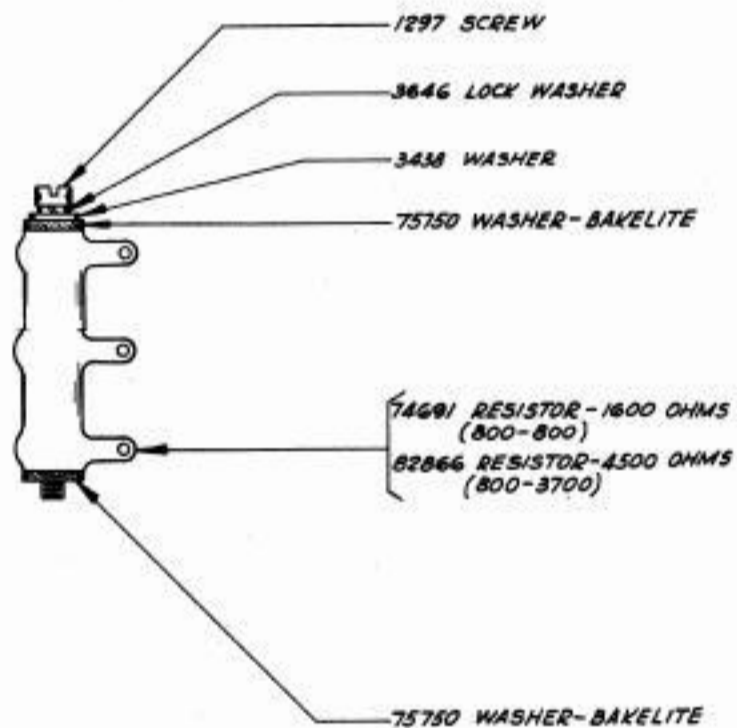
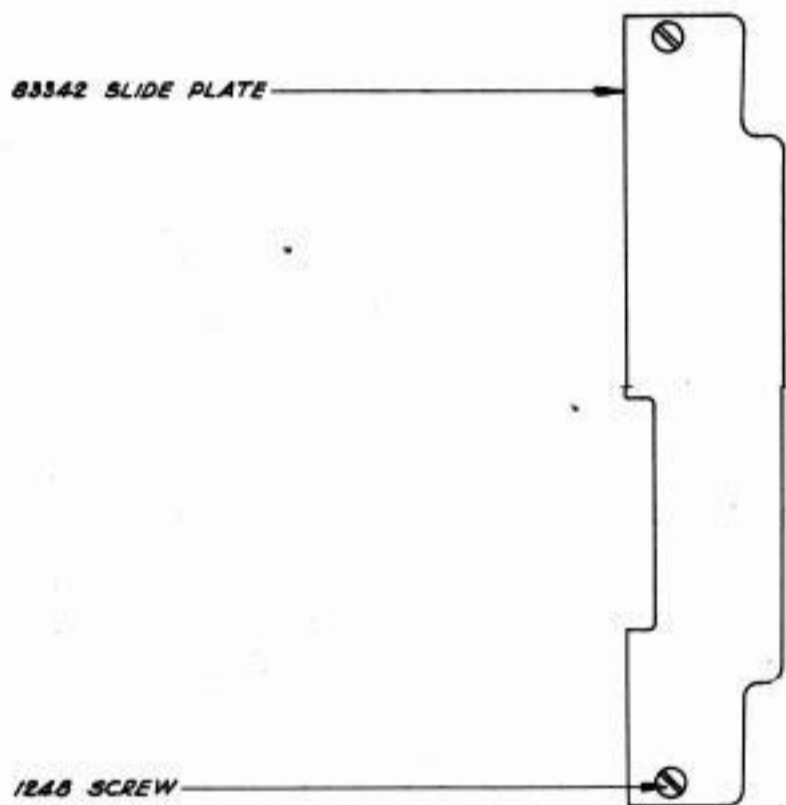
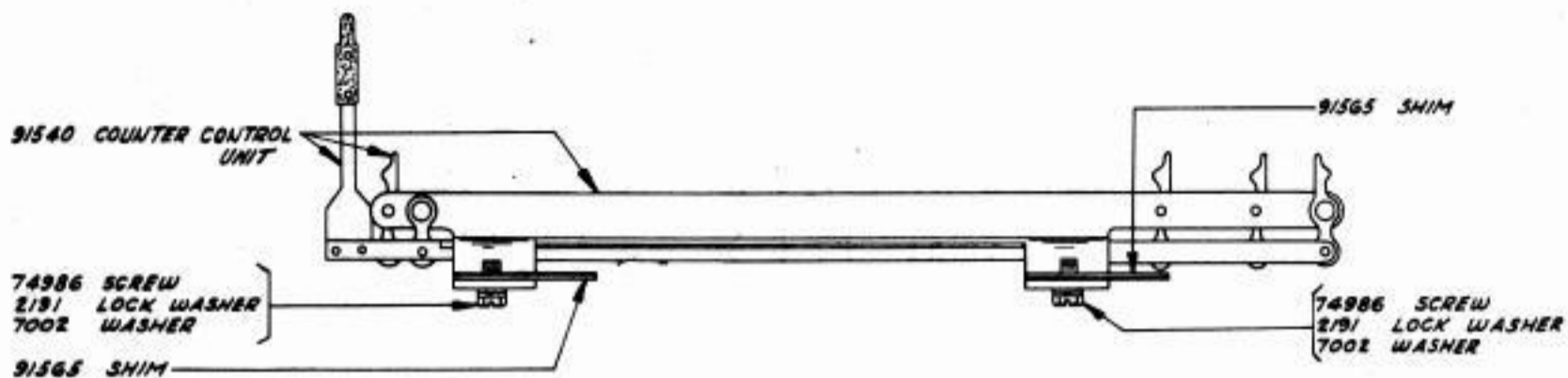
83895 CABLE - RESISTOR  
(W.D. - 1986)

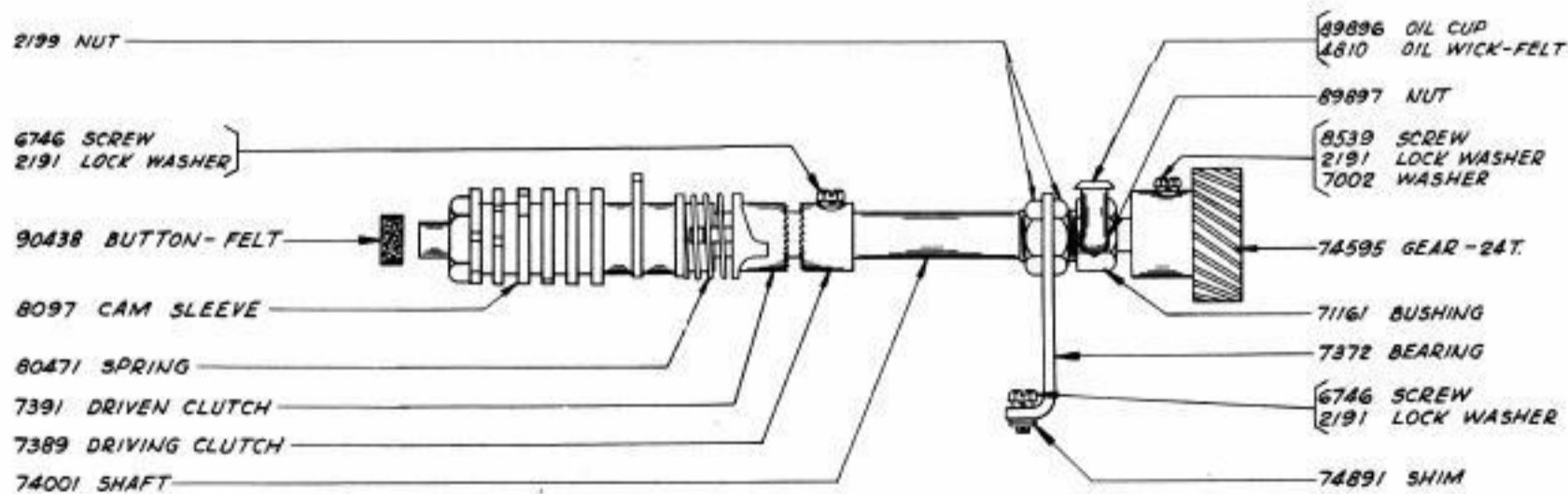
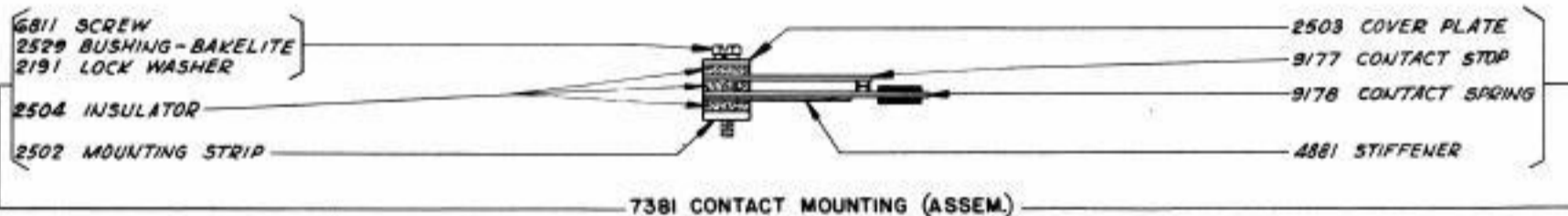
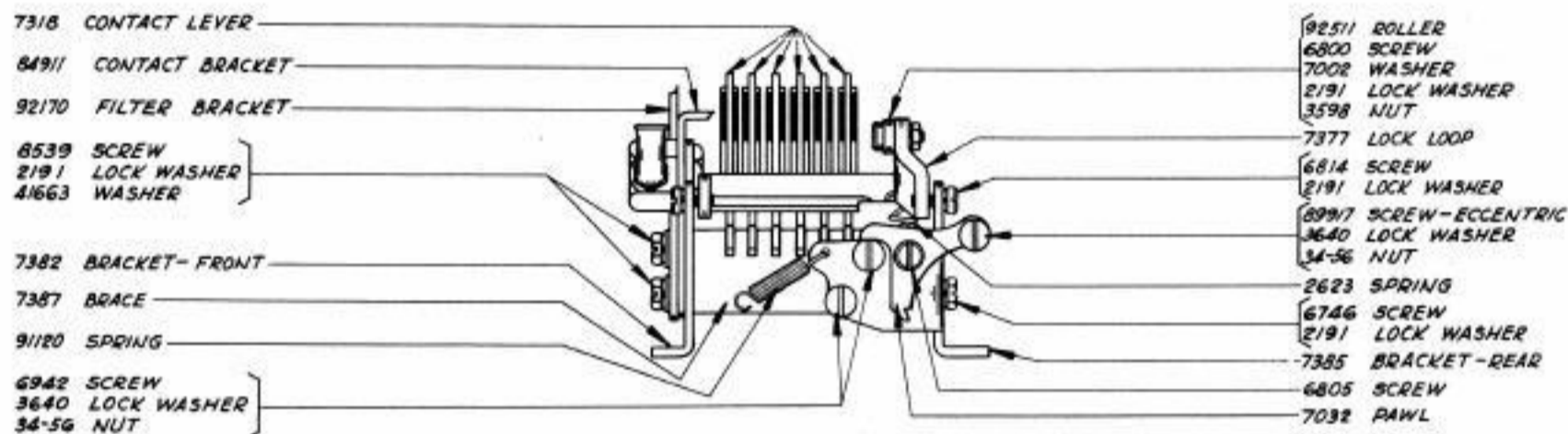
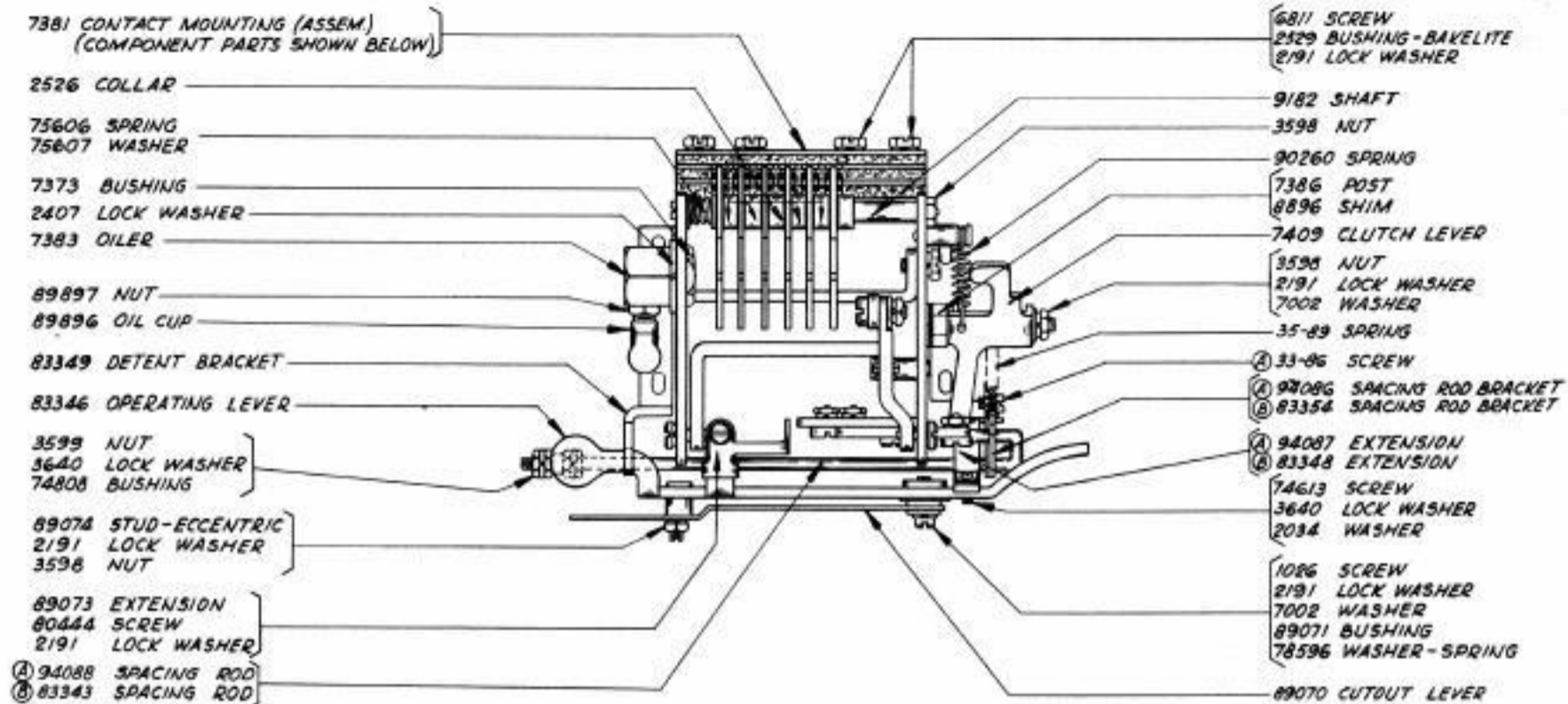
KEYBOARD BASE  
BOTTOM VIEW



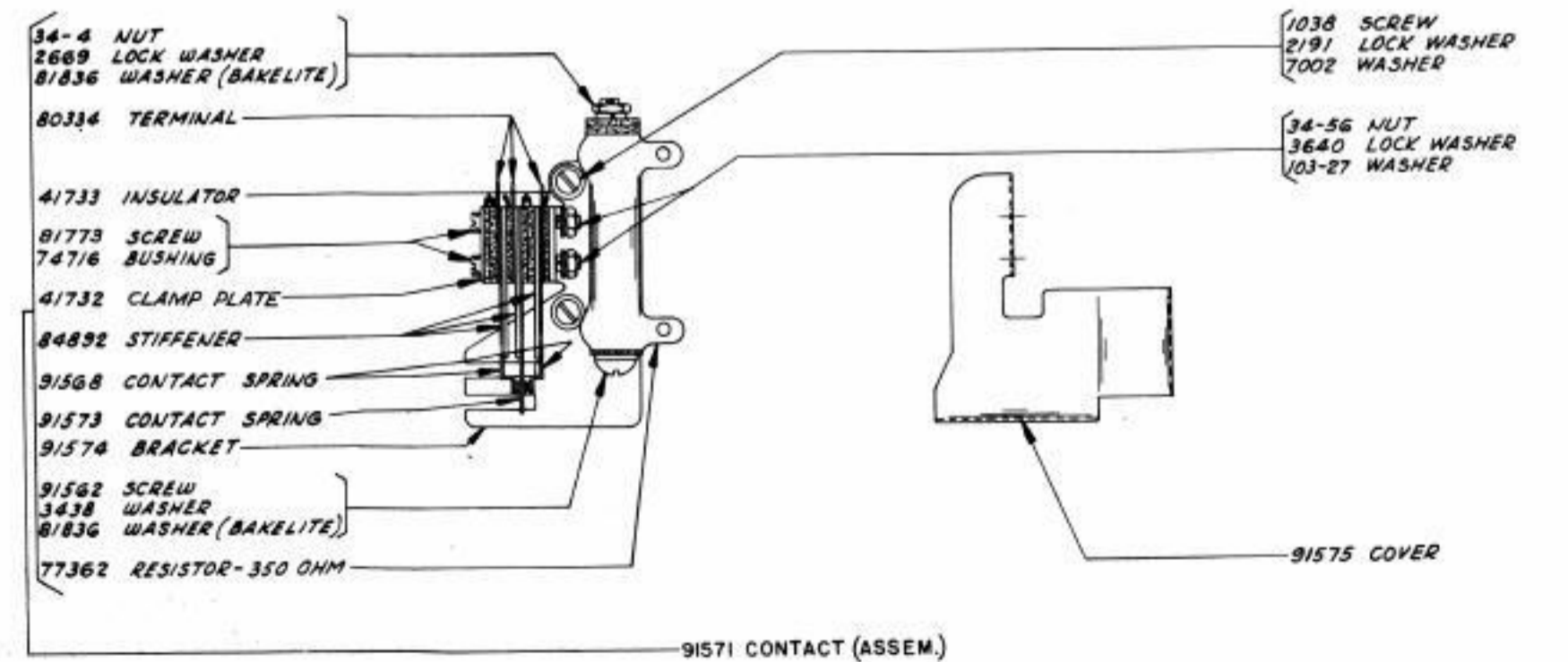
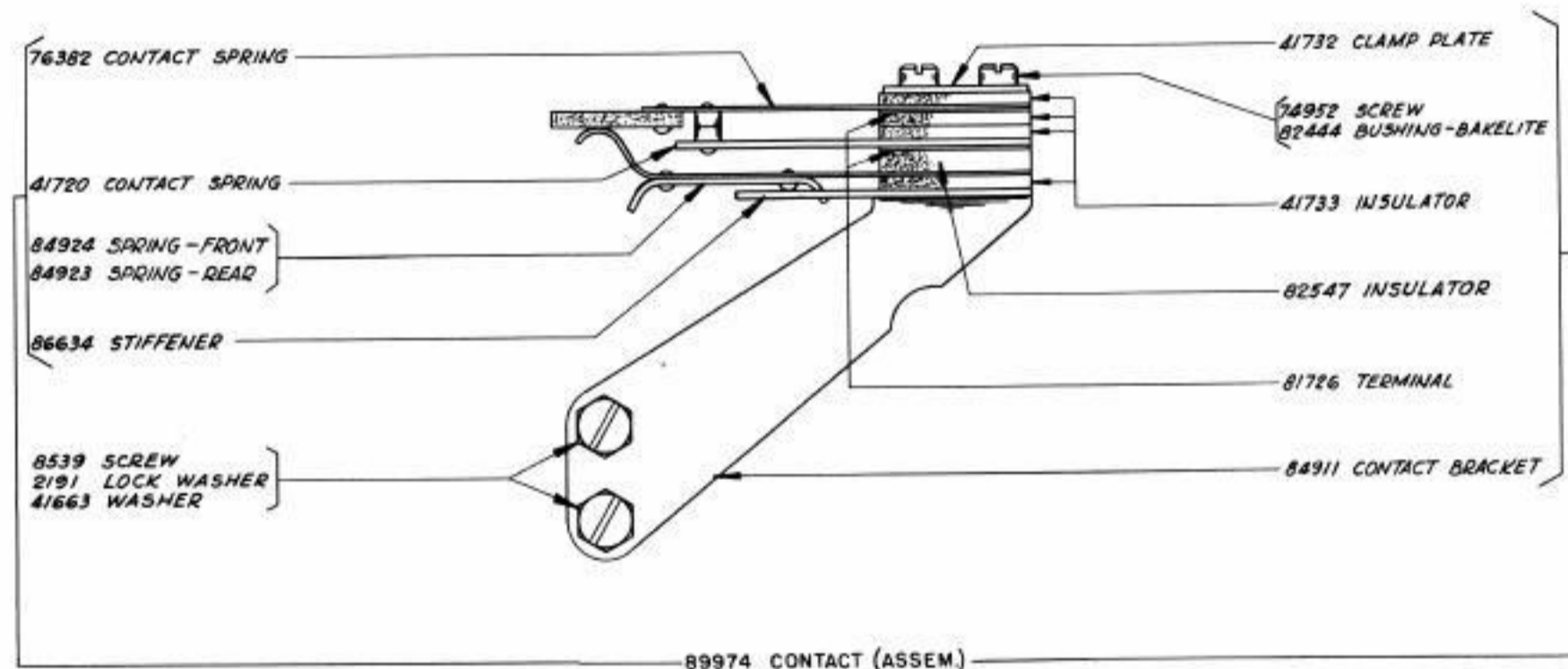
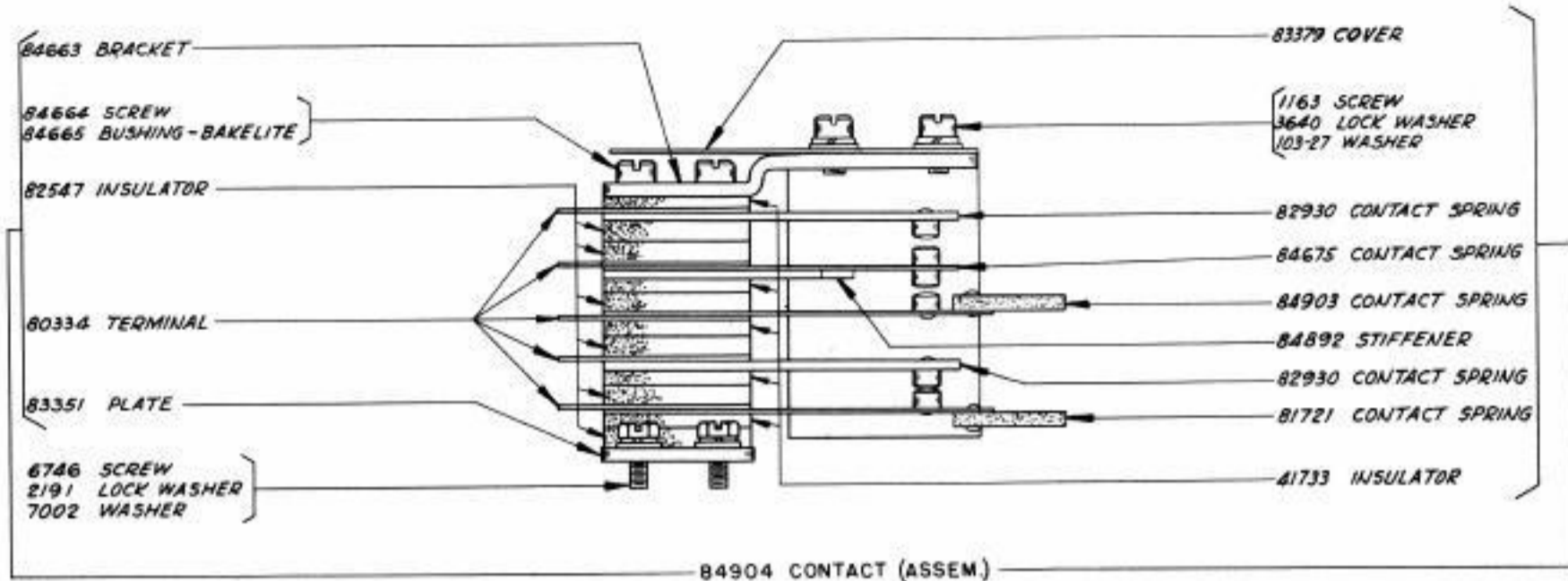
SELECTOR BARS	
BAR STAMPED	CATALOG NUMBER
A-1	83314
A-2	83315
B-1	83316
B-2	83317
C-1	83318
C-2	83319
D-1	83320
D-2	83321
E-1	83322
E-2	83323
G-2	83324



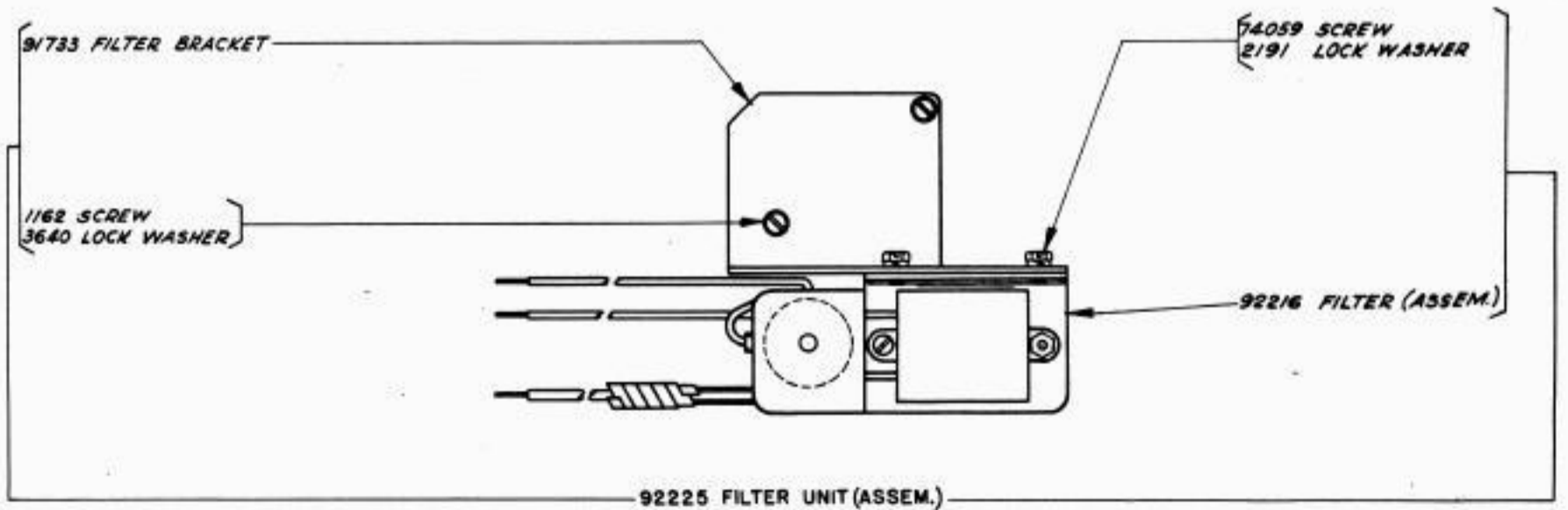
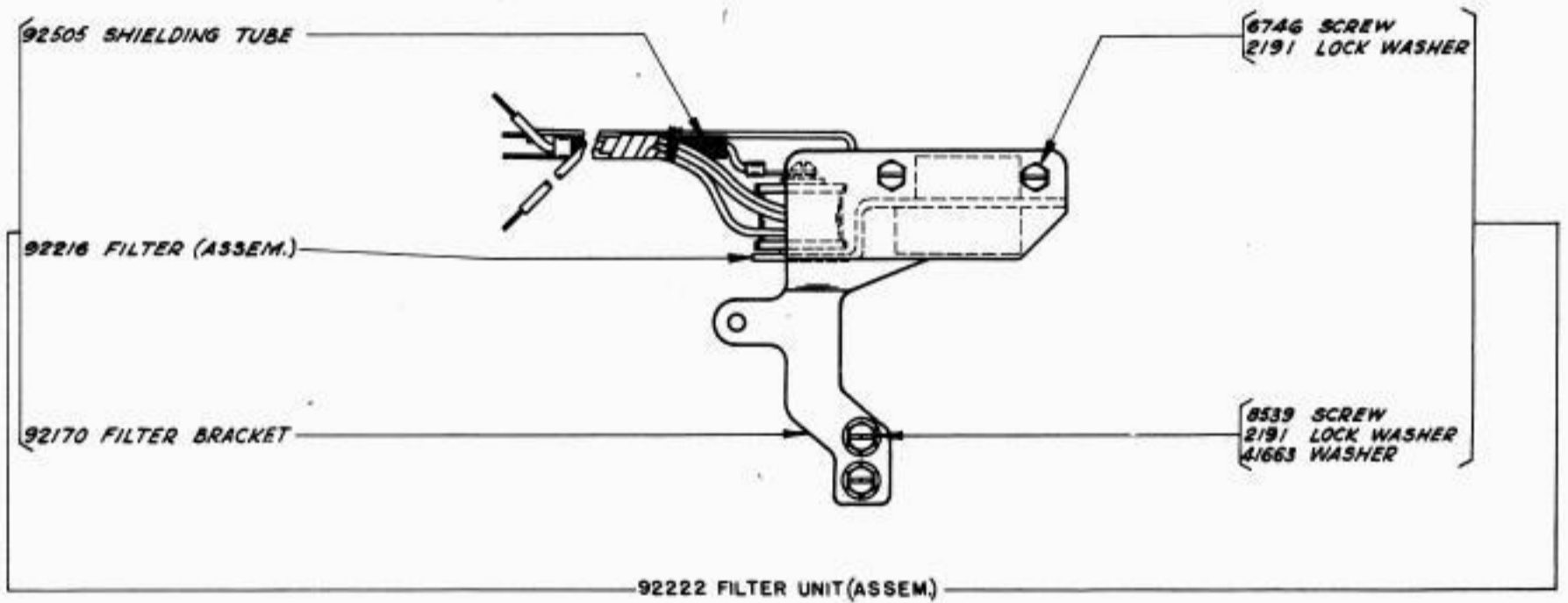
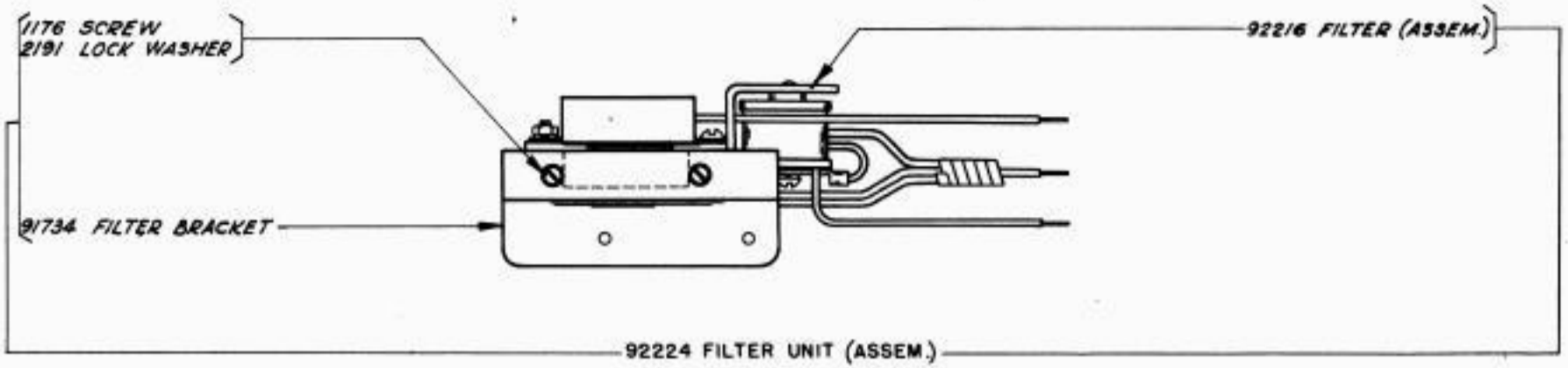


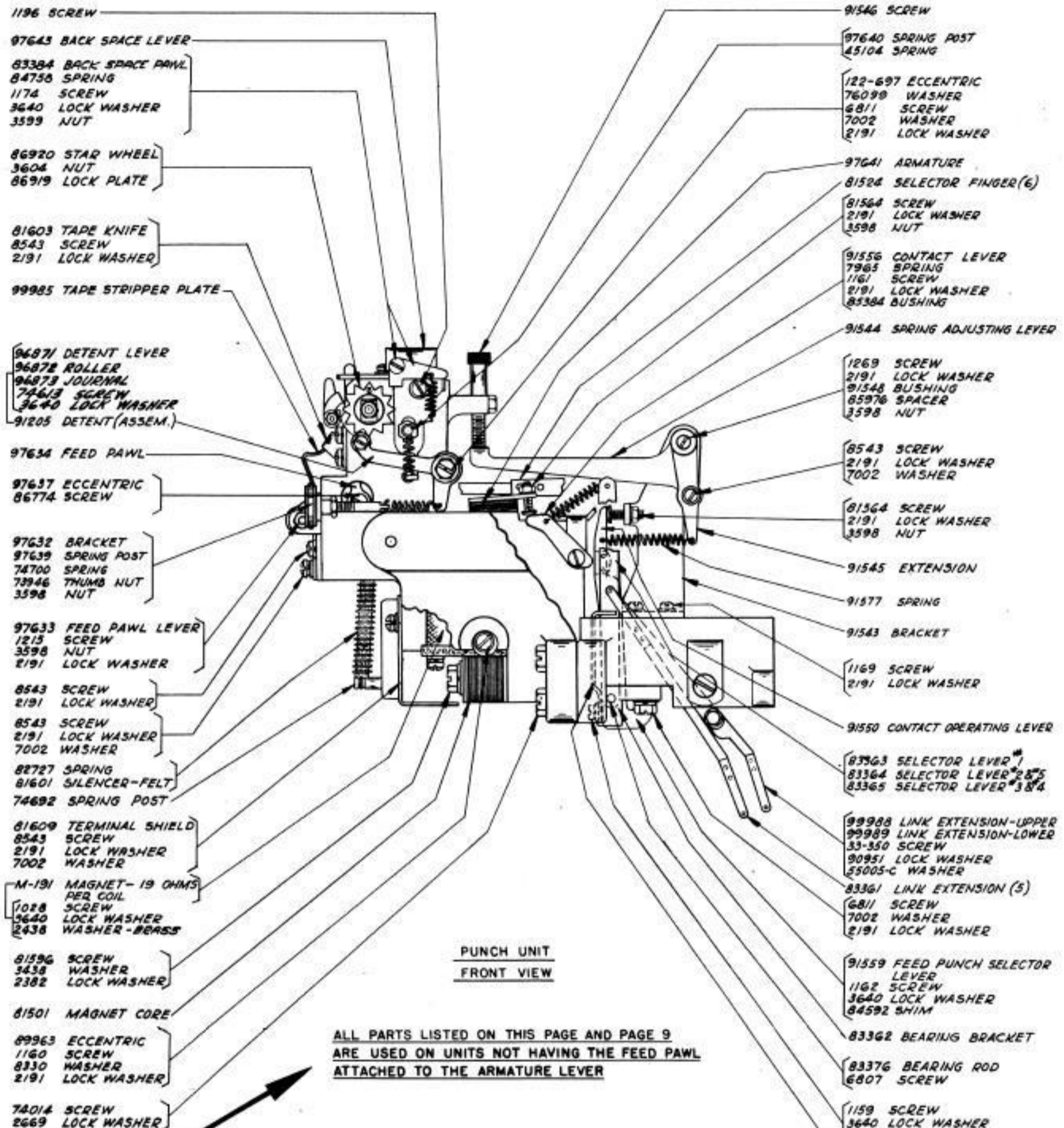


A USED ON UNITS NOT HAVING THE FEED PAWL ATTACHED TO THE ARMATURE LEVER (SEE PAGES 8 AND 9)  
B USED ON UNITS HAVING THE FEED PAWL ATTACHED TO THE ARMATURE LEVER (SEE PAGES 10 AND 11)









- 1196 SCREW
- 97643 BACK SPACE LEVER
- 83384 BACK SPACE PAWL
- 84758 SPRING
- 1174 SCREW
- 3640 LOCK WASHER
- 3599 NUT
- 86920 STAR WHEEL
- 3604 NUT
- 86919 LOCK PLATE
- 81603 TAPE KNIFE
- 8543 SCREW
- 2191 LOCK WASHER
- 99985 TAPE STRIPPER PLATE
- 96871 DETENT LEVER
- 96872 ROLLER
- 96873 JOURNAL
- 74613 SCREW
- 3640 LOCK WASHER
- 91205 DETENT (ASSEM.)
- 97634 FEED PAWL
- 97637 ECCENTRIC
- 86774 SCREW
- 97632 BRACKET
- 97639 SPRING POST
- 74700 SPRING
- 73946 THUMB NUT
- 3598 NUT
- 97633 FEED PAWL LEVER
- 1215 SCREW
- 3598 NUT
- 2191 LOCK WASHER
- 8543 SCREW
- 2191 LOCK WASHER
- 8543 SCREW
- 2191 LOCK WASHER
- 7002 WASHER
- 82727 SPRING
- 81601 SILENCER-FELT
- 74692 SPRING POST
- 81609 TERMINAL SHIELD
- 8543 SCREW
- 2191 LOCK WASHER
- 7002 WASHER
- M-191 MAGNET- 19 OHMS PER COIL
- 1028 SCREW
- 3640 LOCK WASHER
- 2438 WASHER-BRASS
- 81596 SCREW
- 3438 WASHER
- 2382 LOCK WASHER
- 81501 MAGNET CORE
- 89963 ECCENTRIC
- 1160 SCREW
- 8330 WASHER
- 2191 LOCK WASHER
- 74014 SCREW
- 2669 LOCK WASHER

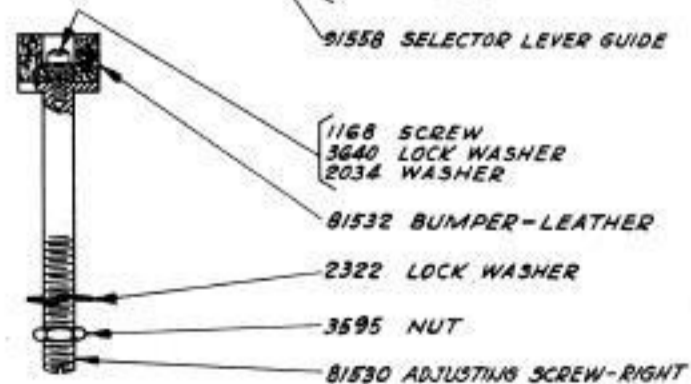
- 91546 SCREW
- 97640 SPRING POST
- 45104 SPRING
- 122-697 ECCENTRIC
- 76098 WASHER
- 6811 SCREW
- 7002 WASHER
- 2191 LOCK WASHER
- 97641 ARMATURE
- 81524 SELECTOR FINGER(6)
- 81564 SCREW
- 2191 LOCK WASHER
- 3598 NUT
- 91556 CONTACT LEVER
- 7965 SPRING
- 1161 SCREW
- 2191 LOCK WASHER
- 85384 BUSHING
- 91544 SPRING ADJUSTING LEVER
- 1269 SCREW
- 2191 LOCK WASHER
- 91548 BUSHING
- 85976 SPACER
- 3598 NUT
- 8543 SCREW
- 2191 LOCK WASHER
- 7002 WASHER
- 81564 SCREW
- 2191 LOCK WASHER
- 3598 NUT
- 91545 EXTENSION
- 91577 SPRING
- 91543 BRACKET
- 1169 SCREW
- 2191 LOCK WASHER
- 91550 CONTACT OPERATING LEVER
- 83363 SELECTOR LEVER 1
- 83364 SELECTOR LEVER 2,3,5
- 83365 SELECTOR LEVER 3,4
- 99988 LINK EXTENSION-UPPER
- 99989 LINK EXTENSION-LOWER
- 33-350 SCREW
- 90951 LOCK WASHER
- 55005-C WASHER
- 83361 LINK EXTENSION (3)
- 6811 SCREW
- 7002 WASHER
- 2191 LOCK WASHER
- 91559 FEED PUNCH SELECTOR LEVER
- 1162 SCREW
- 3640 LOCK WASHER
- 84592 SHIM
- 83362 BEARING BRACKET
- 83376 BEARING ROD
- 6807 SCREW
- 1159 SCREW
- 3640 LOCK WASHER
- 103-27 WASHER
- 91558 SELECTOR LEVER GUIDE
- 1168 SCREW
- 3640 LOCK WASHER
- 2034 WASHER
- 81532 BUMPER-LEATHER
- 2322 LOCK WASHER
- 3595 NUT
- 81530 ADJUSTING SCREW-RIGHT

PUNCH UNIT  
FRONT VIEW

ALL PARTS LISTED ON THIS PAGE AND PAGE 9  
ARE USED ON UNITS NOT HAVING THE FEED PAWL  
ATTACHED TO THE ARMATURE LEVER

NOTE

- 1028 SCREW
- 90951 LOCK WASHER
- 97642 BUMPER-LEATHER
- 2322 LOCK WASHER
- 3595 NUT
- 81531 ADJUSTING SCREW-LEFT
- FOR COUNTER AND PERFORATOR  
CABLE SEE PAGE 13



- 1168 SCREW
- 3640 LOCK WASHER
- 2034 WASHER
- 81532 BUMPER-LEATHER
- 2322 LOCK WASHER
- 3595 NUT
- 81530 ADJUSTING SCREW-RIGHT

91733 FILTER BRACKET  
1162 SCREW  
3640 LOCK WASHER

91547 BRACKET  
1169 SCREW  
3598 NUT

86865 CHAD CHUTE

81593 ARMATURE SHAFT  
1026 SCREW

98841 BRACKET

1161 SCREW  
2191 LOCK WASHER

8539 SCREW  
2191 LOCK WASHER

73482 STUD  
81638 COLLAR  
2191 LOCK WASHER  
3598 NUT  
82392 SHIM

81597 BRACKET  
81657 SHIM

89504 PUNCH BLOCK (ASSEM.)  
(COMPONENT PARTS  
SHOWN BELOW)  
1269 SCREW  
2191 LOCK WASHER

84023 SPRING

103-27 WASHER  
3640 LOCK WASHER  
3598 NUT

73481 TAPE TENSION LEVER

97631 ADJUSTING BRACKET

1179 SCREW  
2191 LOCK WASHER  
7001 WASHER (UNDER 97631)

1206 SCREW  
3598 NUT  
3640 LOCK WASHER

122-577 FEED ROLL  
81596 BUSHING

97638 GUIDE  
8543 SCREW  
2191 LOCK WASHER  
7002 WASHER

2410 TAPE GUIDE SPRING  
1164 SCREW  
2422 LOCK WASHER

97641 ARMATURE  
84082 SCREW  
2191 LOCK WASHER

74014 SCREW  
2669 LOCK WASHER

1026 SCREW  
2191 LOCK WASHER  
7002 WASHER

91555 CONTACT BRACKET

41733 INSULATOR (6 USED)

41732 CLAMP PLATE

1206 SCREW  
74965 BUSHING-BAKELITE

94288 CABLE CLAMP  
1187 SCREW  
2669 LOCK WASHER

74805 SCREW (2)  
2669 LOCK WASHER  
81726 TERMINAL

1169 SCREW  
2191 LOCK WASHER  
7002 WASHER

84767 CONTACT SPRING

84698 CONTACT SPRING

83370 EXTENSION

33-344 SCREW (1)  
2669 LOCK WASHER

91559 FEED PUNCH  
SELECTOR LEVER

94288 CABLE CLAMP  
1187 SCREW  
2669 LOCK WASHER

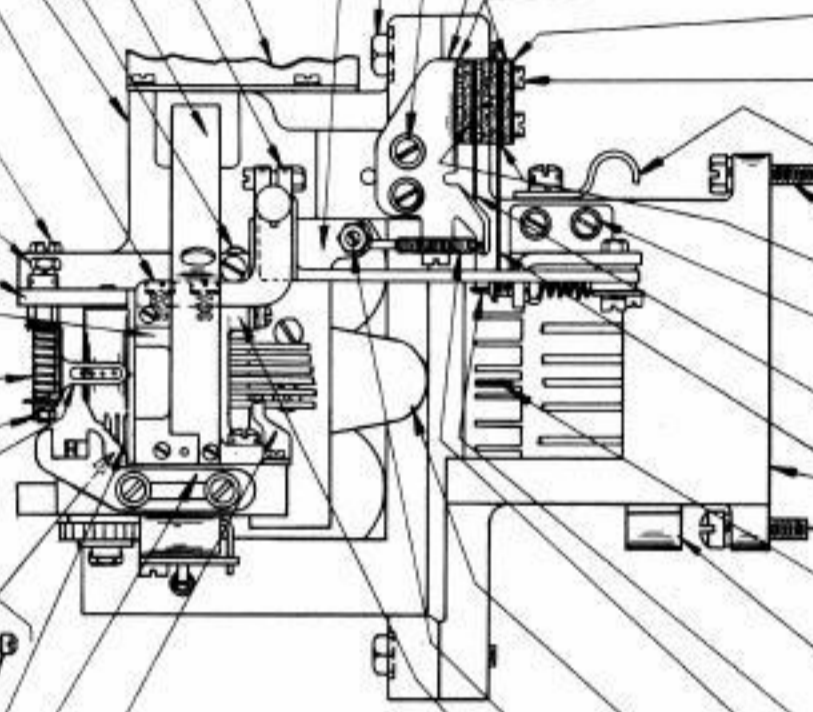
91550 CONTACT OPERATING  
LEVER

7965 SPRING

97635 ARMATURE LEVER  
89499 SELECTOR FINGER GUIDE  
8543 SCREW  
2191 LOCK WASHER

81564 SCREW  
3598 NUT  
2191 LOCK WASHER

99987 RETAINING BRACKET  
1159 SCREW  
3640 LOCK WASHER  
103-27 WASHER



PUNCH UNIT  
TOP VIEW

ALL PARTS LISTED ON THIS PAGE AND PAGE 8  
ARE USED ON UNITS NOT HAVING THE FEED PAWL  
ATTACHED TO THE ARMATURE LEVER

NOTE

81793 GUIDE AND DIE PLATES  
(FITTED TOGETHER)

5740 SCREW

81515 PUNCH HOLDER

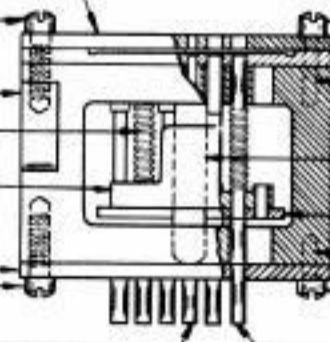
35-116 SPRING

75121 SHEDDER

77984 GUIDE PLATE

5740 SCREW

89500 FEED PUNCH-SMALL



5740 SCREW

122-86 DOWEL

122-80 SHEDDER GUIDE

77986 WEARING STRIP

122-84 DOWEL

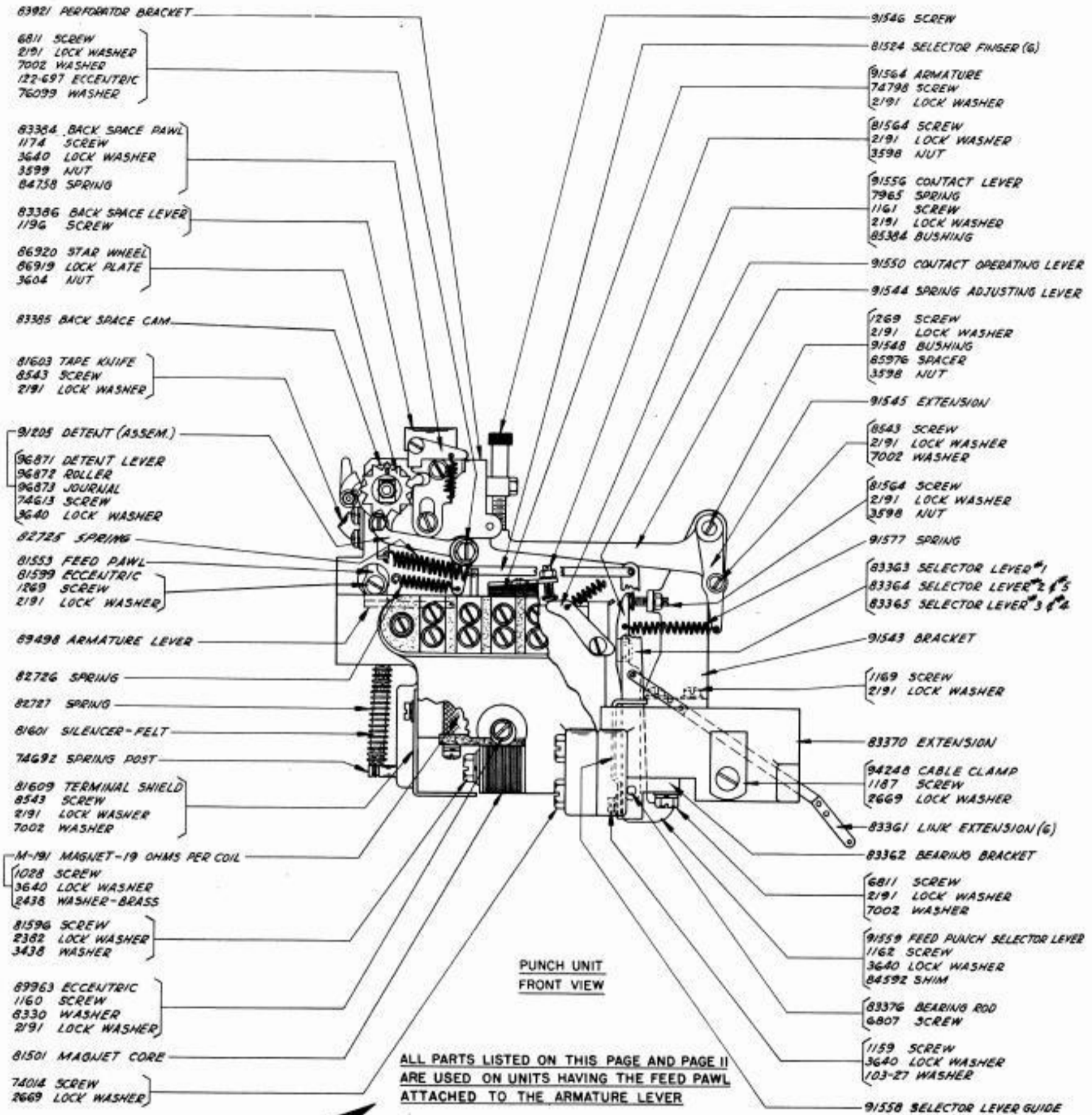
5740 SCREW

122-365 CODE PUNCH-LARGE

89504 PUNCH BLOCK (ASSEM.) 5 UNIT-STRAIGHT FEED HOLE

ALPHABETICAL INDEX

	<u>Page</u>
Cables . . . . .	1,2,13
Cam Sleeve . . . . .	5
Condensers . . . . .	2
Connecting Links . . . . .	3
Contact (Assem.) . . . . .	6
Copyholder - 6" (Assem.) with Accessories . . . . .	15
Cover - Electrical Impulse Counter (Assem.) . . . . .	13
Cover - Perforator Unit . . . . .	15
Cover - Perforator and Counter Unit . . . . .	15
Cover - Printer. . . . .	14
Counter Control Unit . . . . .	4
Electrical Impulse Counter (Assem.) . . . . .	12
Filter Units (Assem.) . . . . .	7
Keyboard Base - Top View . . . . .	1
Keyboard Base - Bottom View . . . . .	2
Key Levers . . . . .	1
Keytops. . . . .	17
Numerical Index. . . . .	18
Punch Block (Assem.) . . . . .	9,11
Punch Unit - Front View. . . . .	8,10
Punch Unit - Top View. . . . .	9,11
Resistors. . . . .	2,4,6
Selector Bars. . . . .	3
Spacer Bar Parts . . . . .	1
Tape Reel Container (Assem.) . . . . .	16
Tape Reel Container Bracket. . . . .	14
Test Key . . . . .	1
Terminal Block (Assem.) . . . . .	1
Transmitter. . . . .	5
Transmitter Shaft. . . . .	5
Universal Bar. . . . .	4



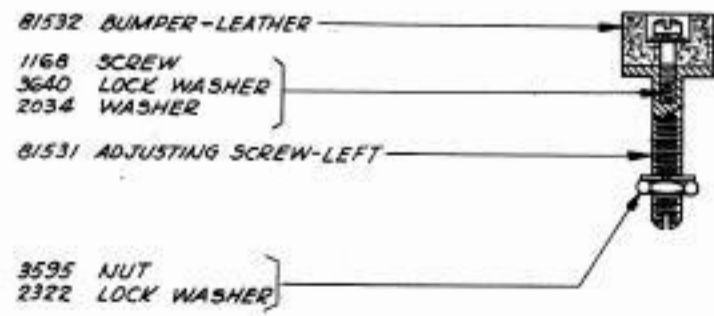
- 83921 PERFORATOR BRACKET
- 6811 SCREW
- 2191 LOCK WASHER
- 7002 WASHER
- 122-697 ECCENTRIC
- 76099 WASHER
- 83364 BACK SPACE PAWL
- 1174 SCREW
- 3640 LOCK WASHER
- 3599 NUT
- 84758 SPRING
- 83386 BACK SPACE LEVER
- 1196 SCREW
- 86920 STAR WHEEL
- 86919 LOCK PLATE
- 3604 NUT
- 83385 BACK SPACE CAM
- 81603 TAPE KNIFE
- 8543 SCREW
- 2191 LOCK WASHER
- 91205 DETENT (ASSEM.)
- 96871 DETENT LEVER
- 96872 ROLLER
- 96873 JOURNAL
- 74613 SCREW
- 3640 LOCK WASHER
- 82725 SPRING
- 81553 FEED PAWL
- 81599 ECCENTRIC
- 1269 SCREW
- 2191 LOCK WASHER
- 89498 ARMATURE LEVER
- 82726 SPRING
- 82727 SPRING
- 81601 SILENCER-FELT
- 74692 SPRING POST
- 81609 TERMINAL SHIELD
- 8543 SCREW
- 2191 LOCK WASHER
- 7002 WASHER
- M-191 MAGNET-19 OHMS PER COIL
- 1028 SCREW
- 3640 LOCK WASHER
- 2438 WASHER-BRASS
- 81596 SCREW
- 2382 LOCK WASHER
- 3438 WASHER
- 89963 ECCENTRIC
- 1160 SCREW
- 8330 WASHER
- 2191 LOCK WASHER
- 81501 MAGNET CORE
- 74014 SCREW
- 2669 LOCK WASHER

- 91546 SCREW
- 81524 SELECTOR FINGER (6)
- 91564 ARMATURE
- 74798 SCREW
- 2191 LOCK WASHER
- 81564 SCREW
- 2191 LOCK WASHER
- 3598 NUT
- 91556 CONTACT LEVER
- 7965 SPRING
- 1161 SCREW
- 2191 LOCK WASHER
- 85384 BUSHING
- 91550 CONTACT OPERATING LEVER
- 91544 SPRING ADJUSTING LEVER
- 1269 SCREW
- 2191 LOCK WASHER
- 91548 BUSHING
- 85976 SPACER
- 3598 NUT
- 91545 EXTENSION
- 8543 SCREW
- 2191 LOCK WASHER
- 7002 WASHER
- 81564 SCREW
- 2191 LOCK WASHER
- 3598 NUT
- 91577 SPRING
- 83363 SELECTOR LEVER #1
- 83364 SELECTOR LEVER #2 & 5
- 83365 SELECTOR LEVER #3 & 4
- 91543 BRACKET
- 1169 SCREW
- 2191 LOCK WASHER
- 83370 EXTENSION
- 94248 CABLE CLAMP
- 1187 SCREW
- 2669 LOCK WASHER
- 83361 LINK EXTENSION (6)
- 83362 BEARING BRACKET
- 6811 SCREW
- 2191 LOCK WASHER
- 7002 WASHER
- 91559 FEED PUNCH SELECTOR LEVER
- 1162 SCREW
- 3640 LOCK WASHER
- 84592 SHIM
- 83376 BEARING ROD
- 6807 SCREW
- 1159 SCREW
- 3640 LOCK WASHER
- 103-27 WASHER
- 91558 SELECTOR LEVER GUIDE

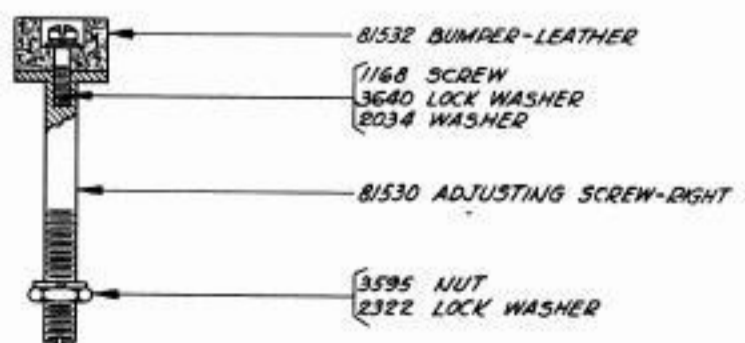
PUNCH UNIT  
FRONT VIEW

ALL PARTS LISTED ON THIS PAGE AND PAGE II  
ARE USED ON UNITS HAVING THE FEED PAWL  
ATTACHED TO THE ARMATURE LEVER

NOTE

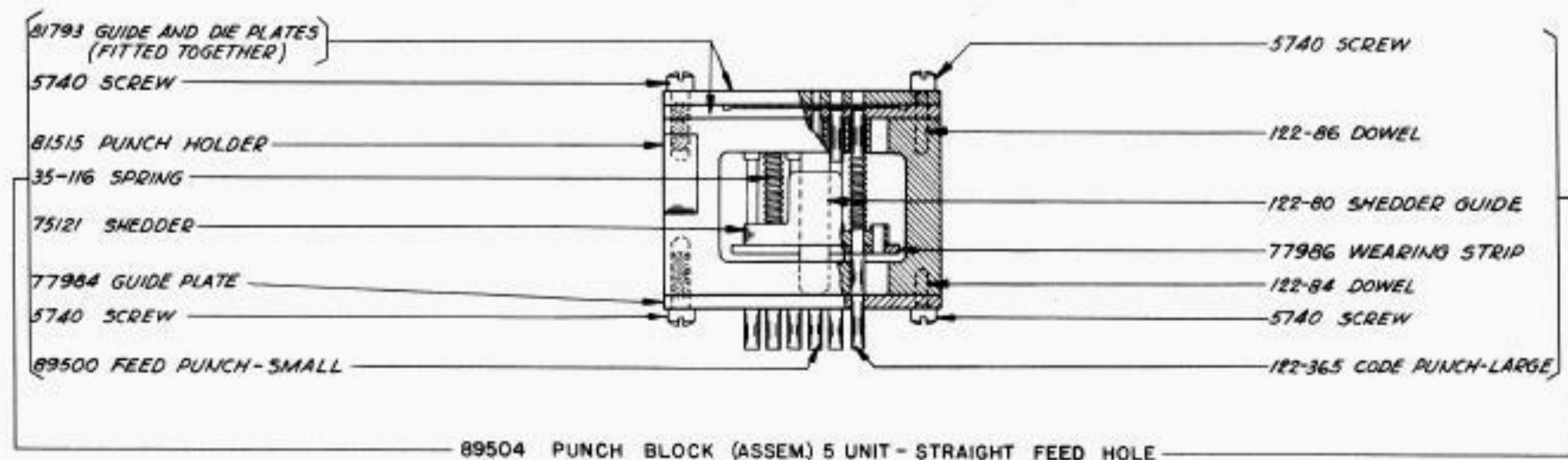
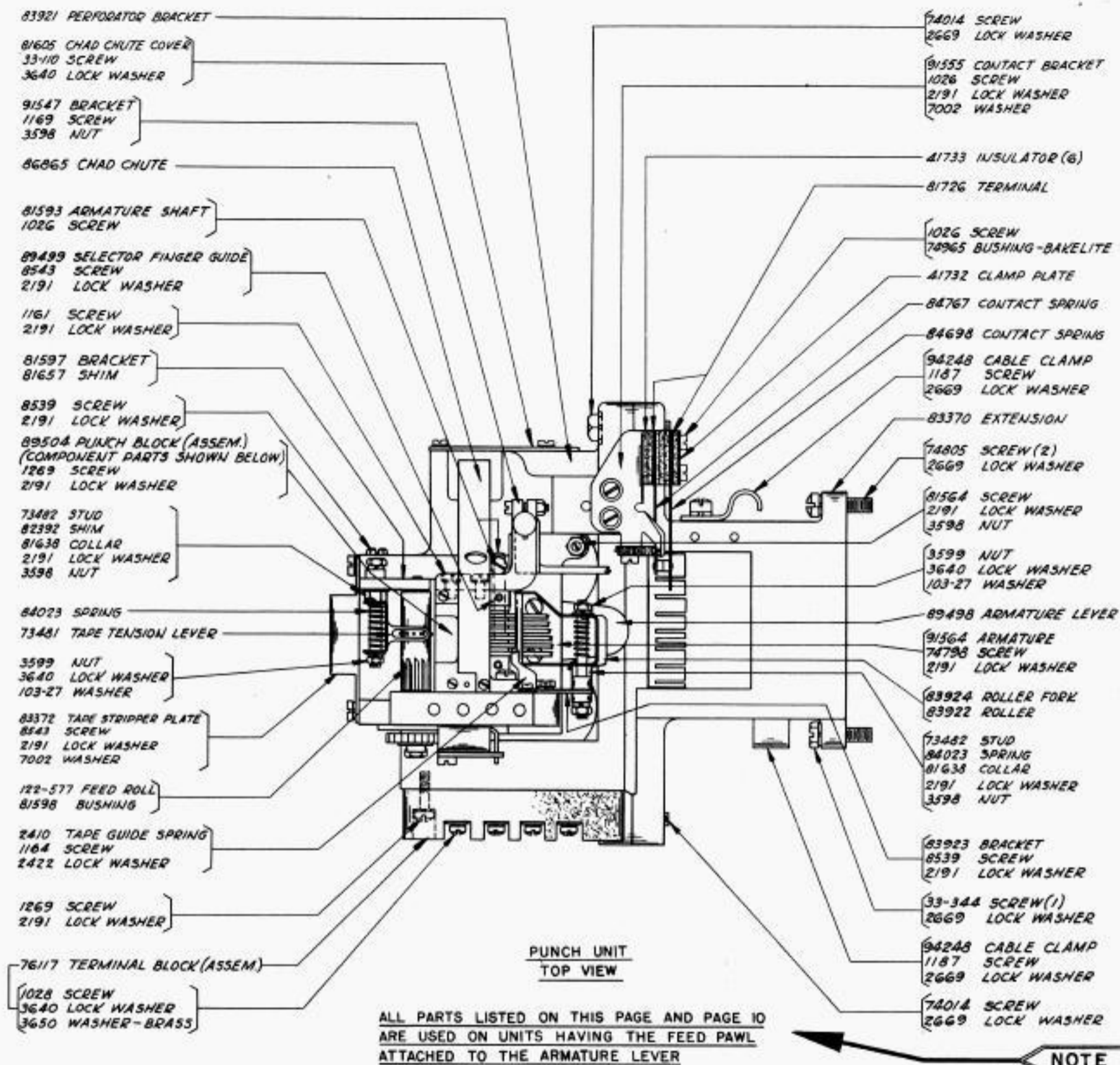


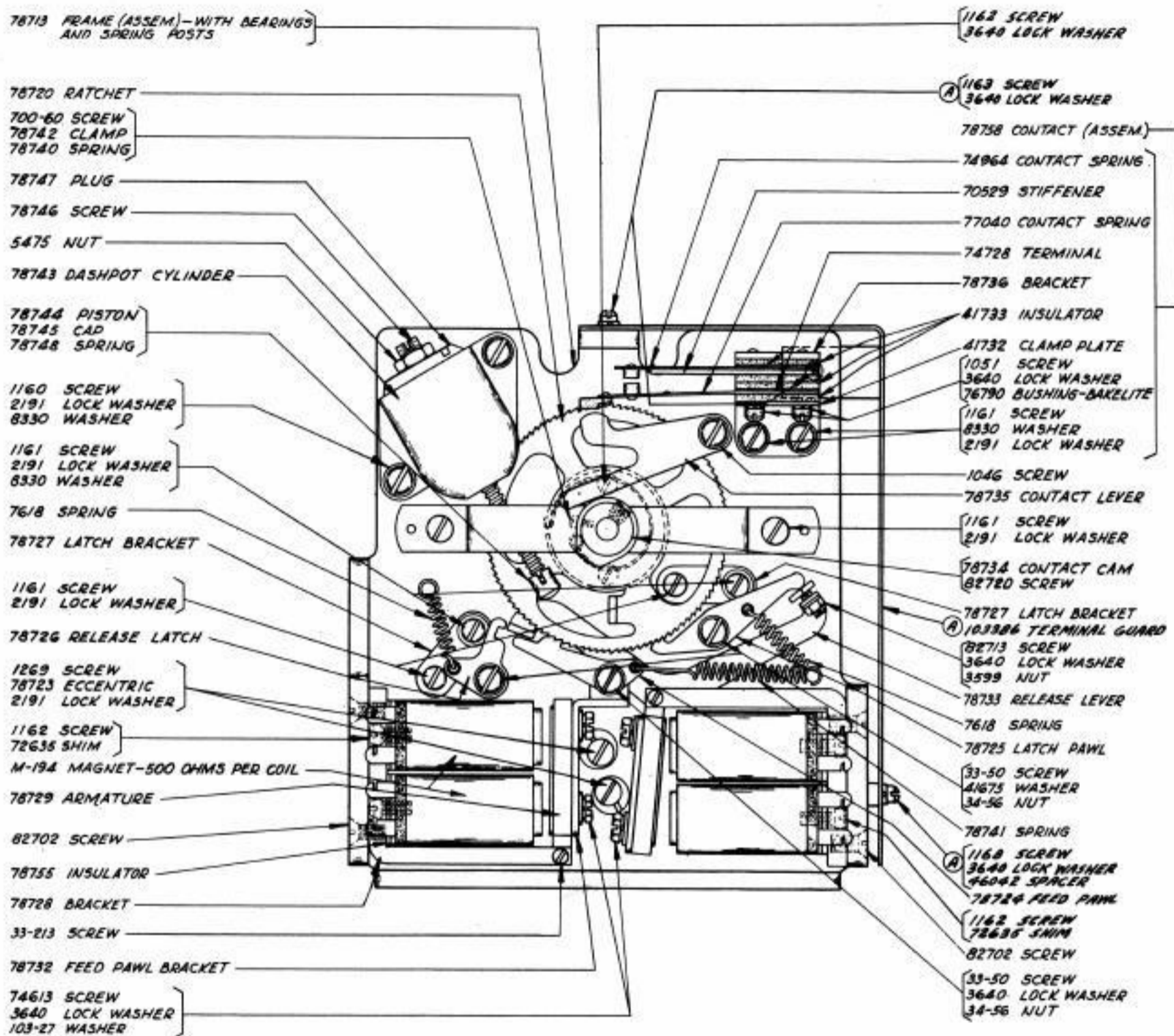
- 81532 BUMPER-LEATHER
- 1168 SCREW
- 3640 LOCK WASHER
- 2034 WASHER
- 81531 ADJUSTING SCREW-LEFT
- 3595 NUT
- 2322 LOCK WASHER



- 81532 BUMPER-LEATHER
- 1168 SCREW
- 3640 LOCK WASHER
- 2034 WASHER
- 81530 ADJUSTING SCREW-RIGHT
- 3595 NUT
- 2322 LOCK WASHER

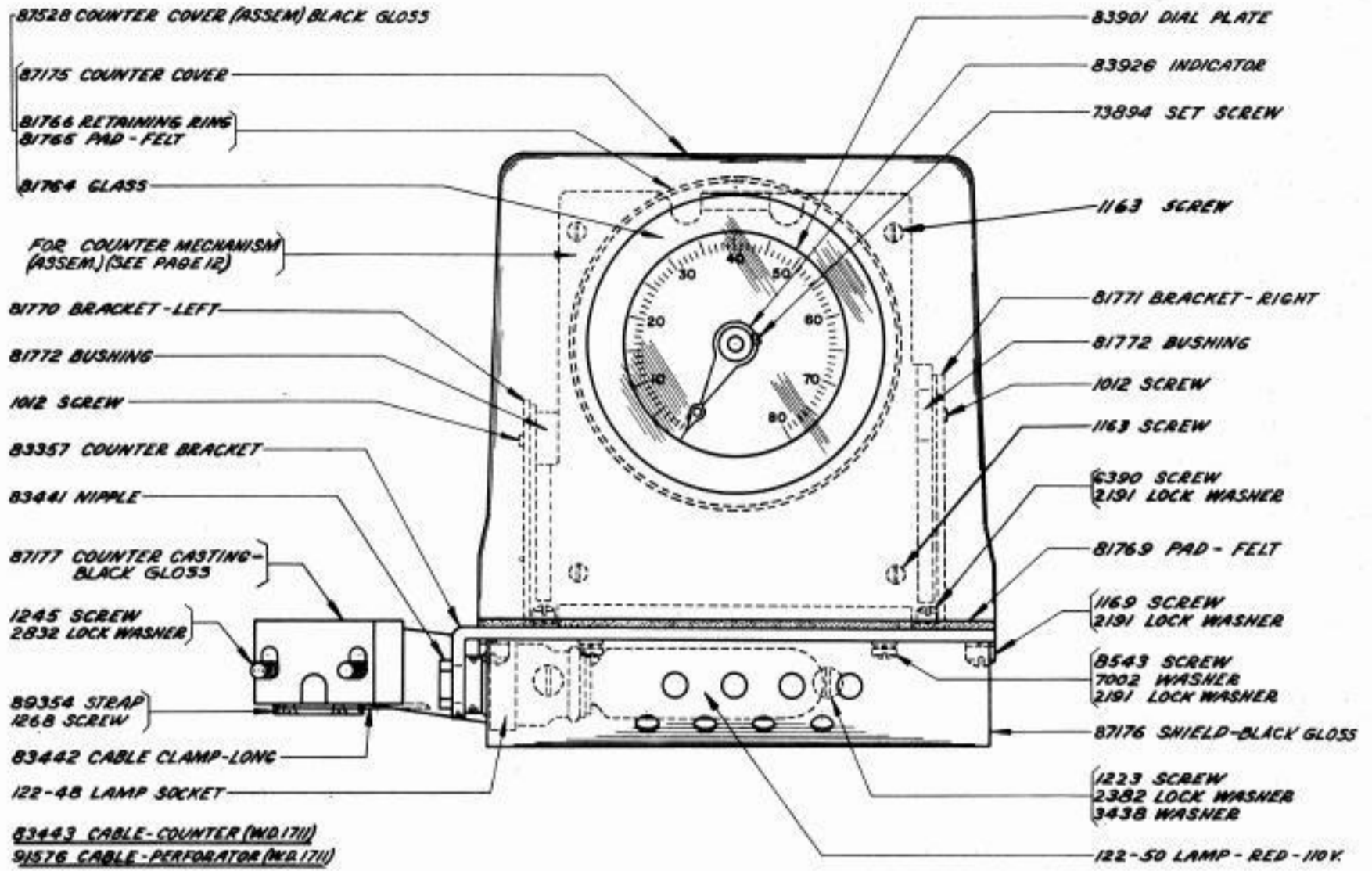
FOR PERFORATOR CABLE SEE PAGE 13





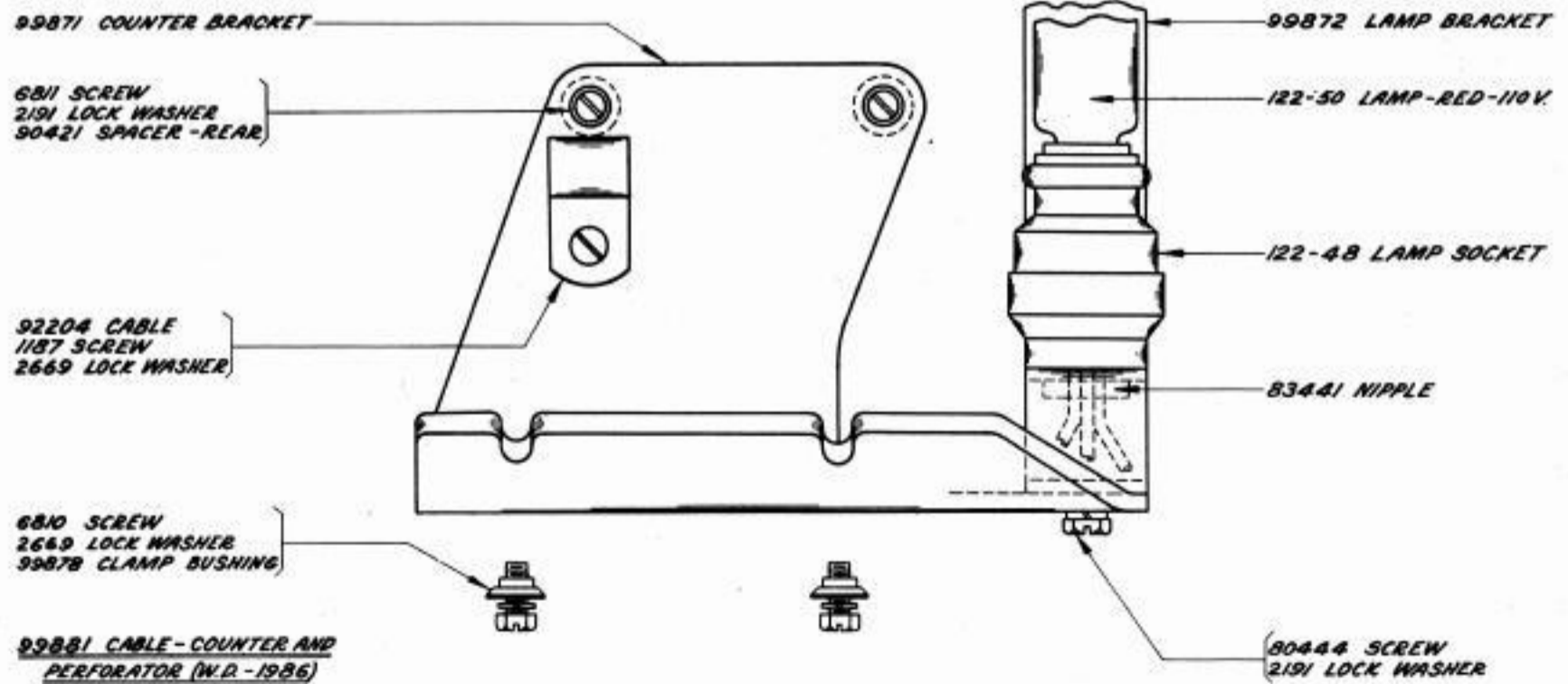
83437 COUNTER MECHANISM (ASSEM.)  
(EXCLUDES PARTS MARKED (A))

(A) PARTS ARE USED ONLY WHEN COUNTER UNIT IS MOUNTED ON THE LEFT HAND SIDE.



USED ONLY WHEN COUNTER UNIT IS MOUNTED ON THE RIGHT HAND SIDE

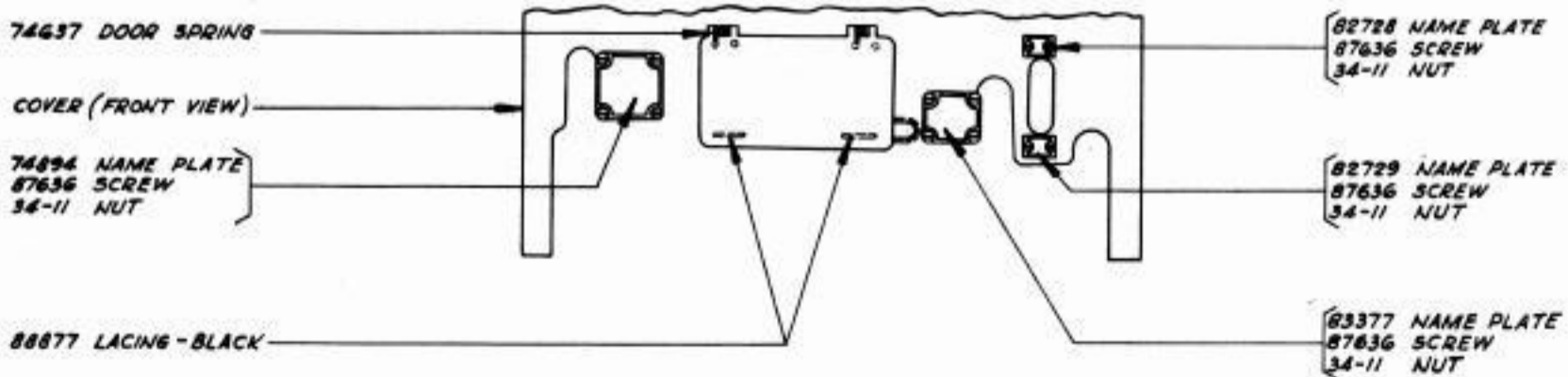
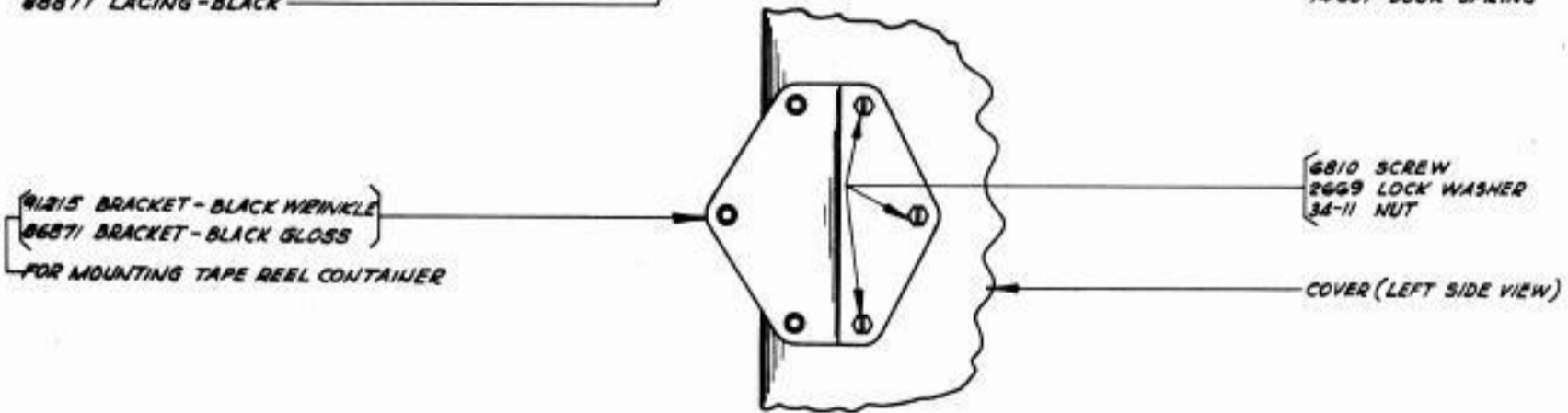
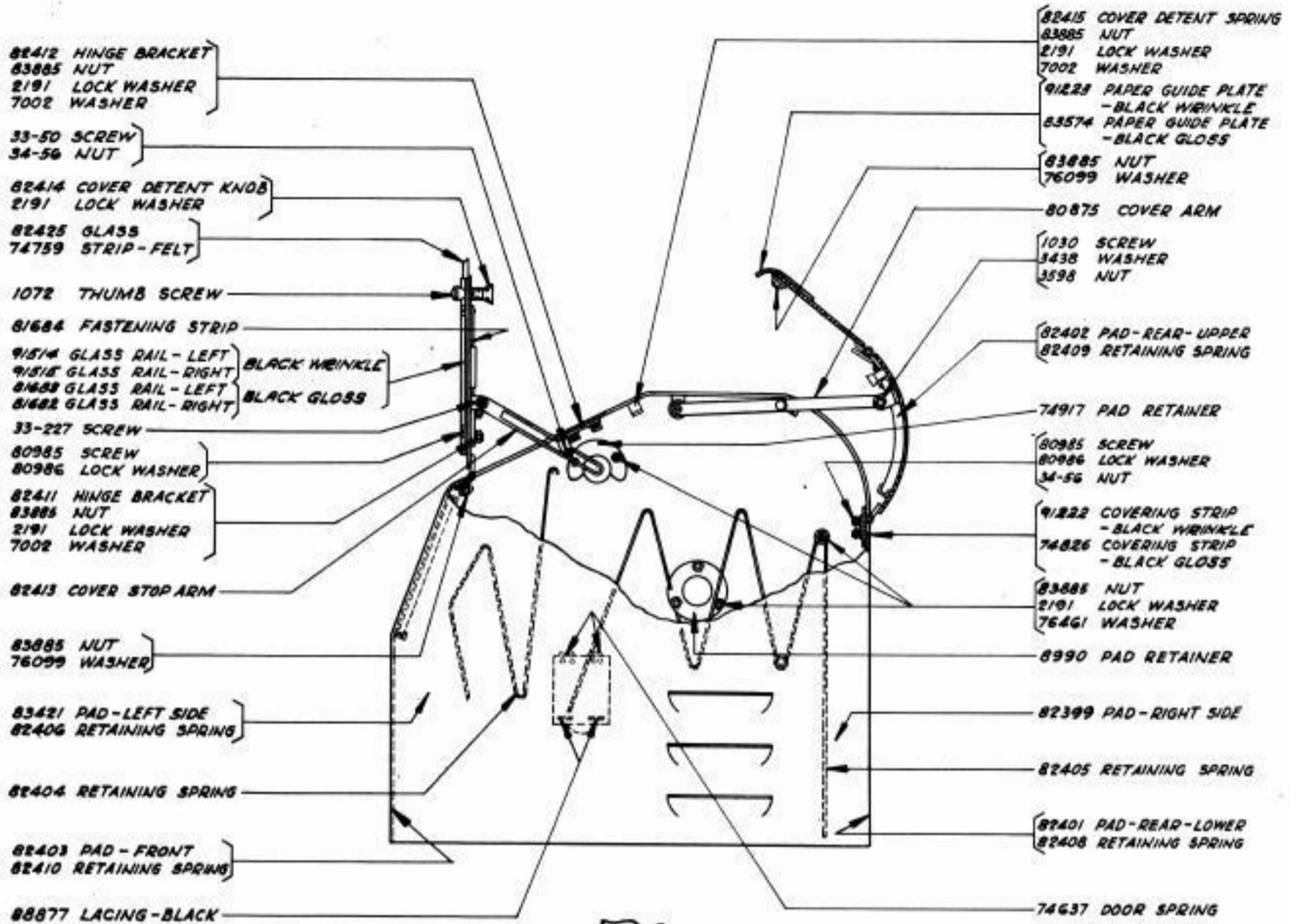
NOTE

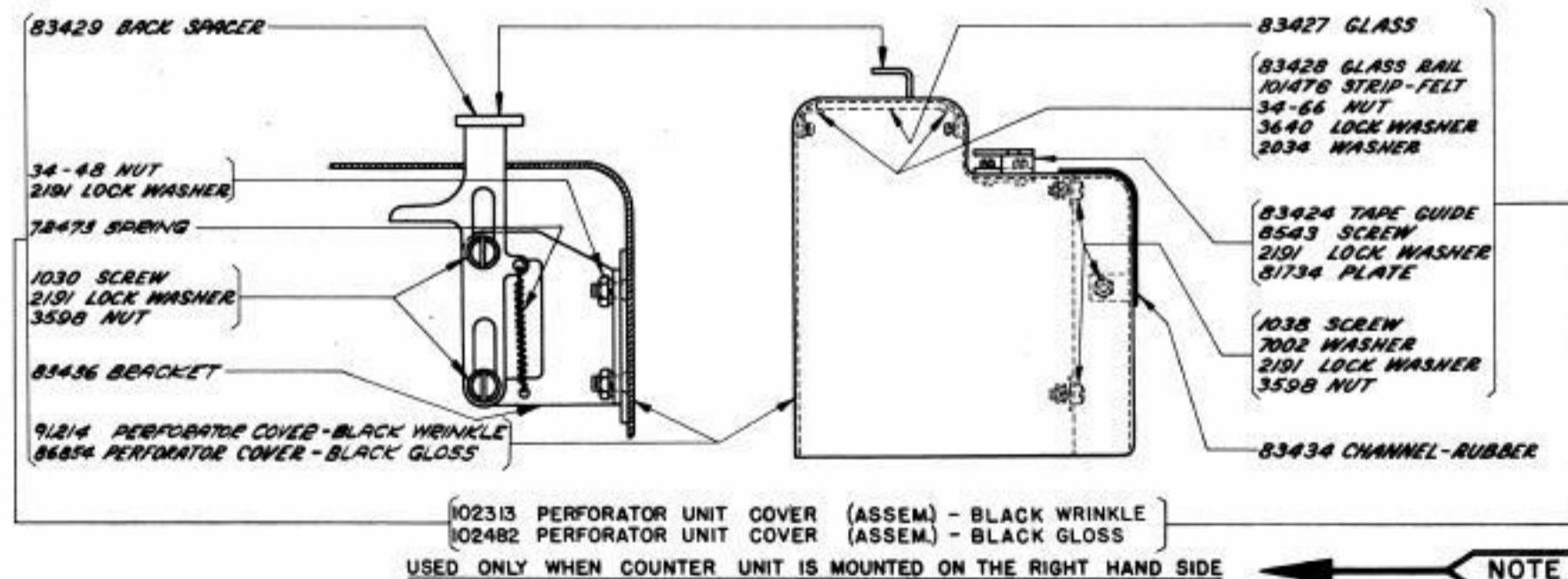
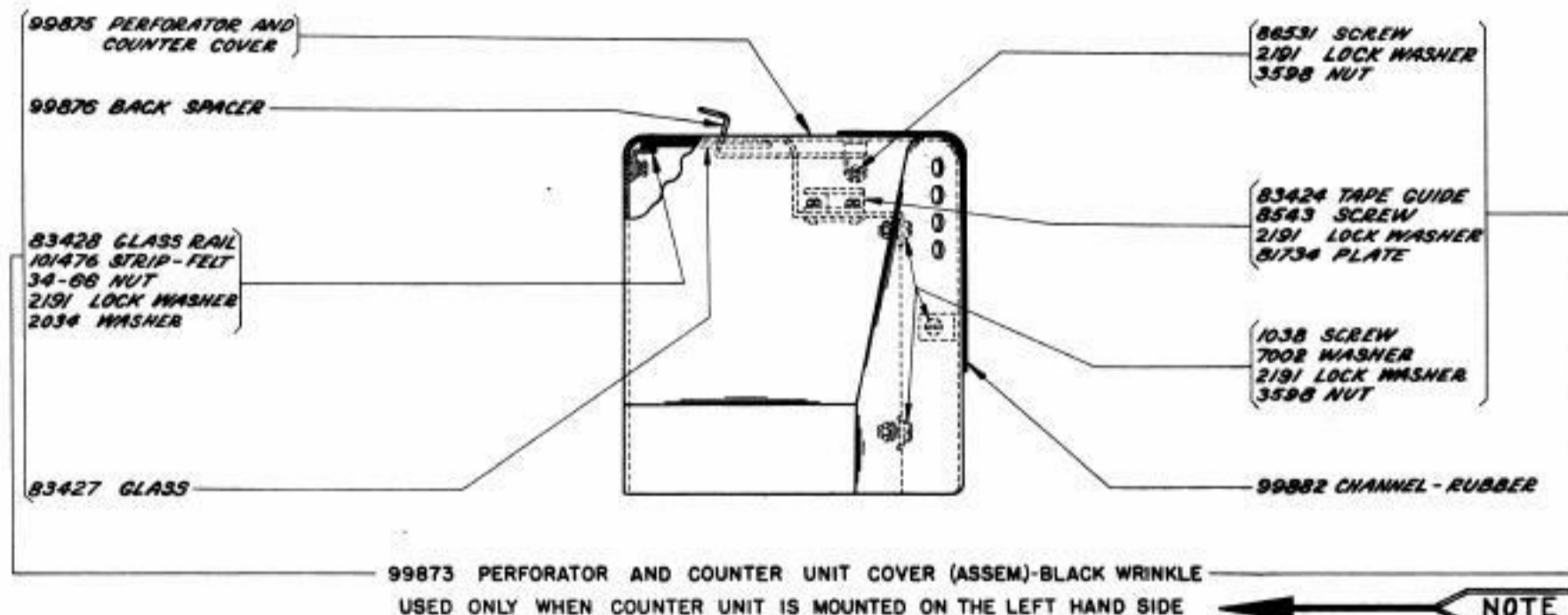
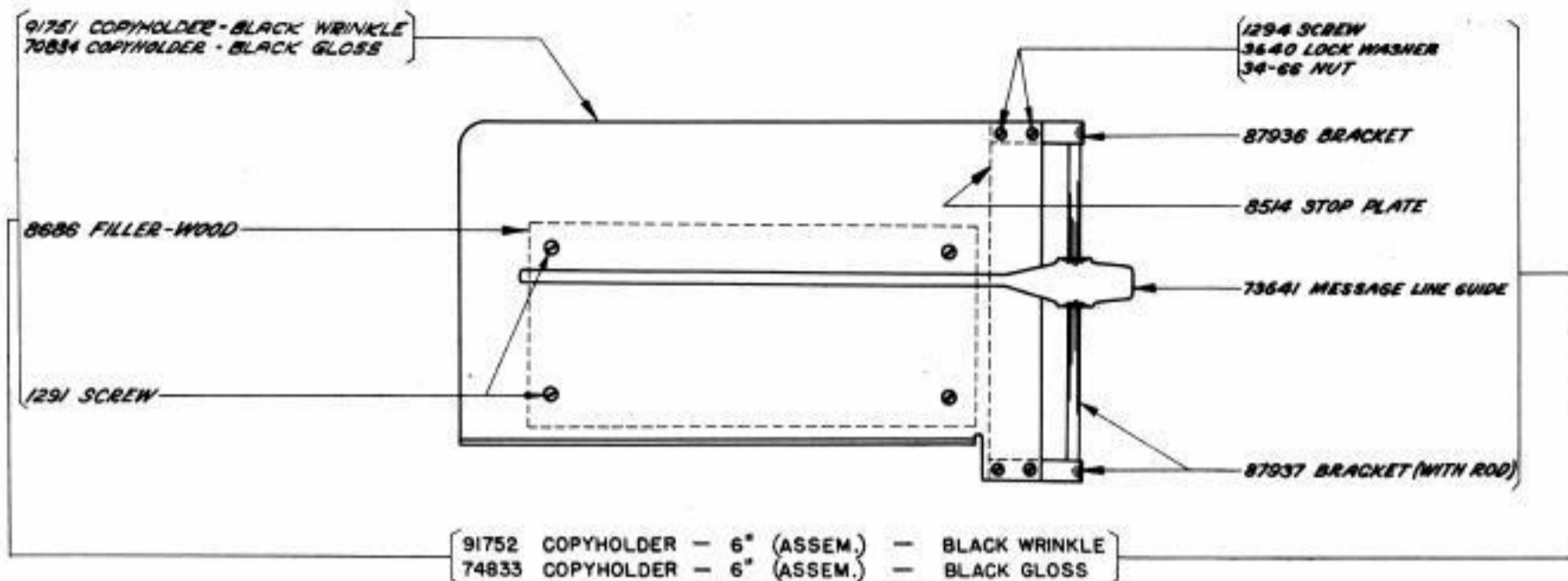


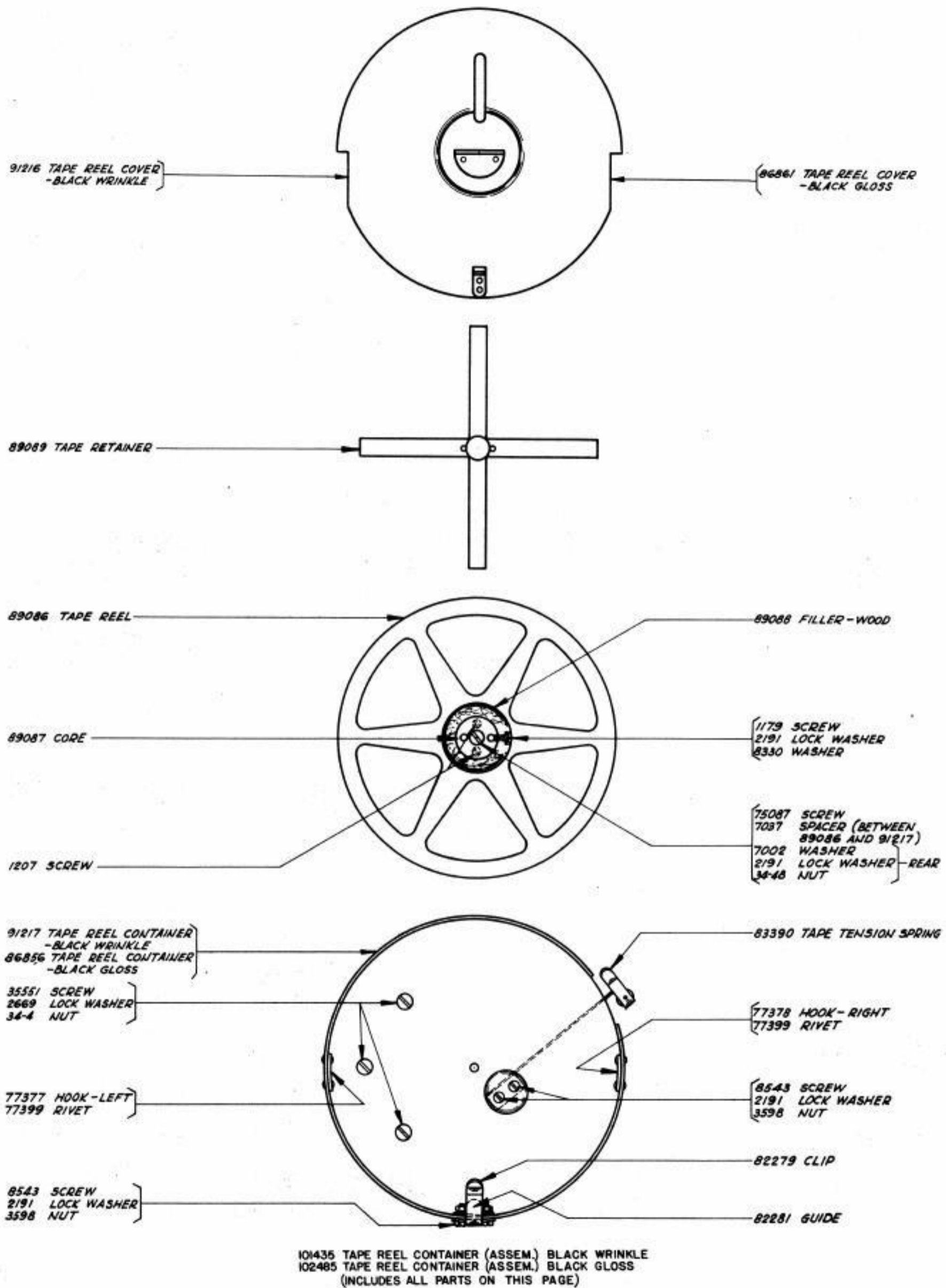
USED ONLY WHEN COUNTER UNIT IS MOUNTED ON THE LEFT HAND SIDE

NOTE









Sets of Spring Cushion Keytops

Keytop Description	89410 (Weather)	78932 (Communication)	91743 (Communication with "H" Stop)
A ↑	89414		
A -		78946	78946
B ⊕	89425		
B ?		78947	78947
C ○	89423		
C :		78948	78948
D ↗	89415		
D \$		78949	78949
E 3	78950	78950	78950
F →	89416		
F !		78951	78951
G ↘	89417		
G &		78952	78952
H ↓	89418		
H £		78953	
H Stop			82607
I 8	78954	78954	78954
J ↗	89419		
J !		78955	78955
K ←	89420		
K (		78956	78956
L ↘	89421		
L )		78957	78957
M .	78958	78958	78958
N ⊕	89426		
N ,		78959	78959
O 9	78960	78960	78960
P 0	78961	78961	78961
Q 1	78962	78962	78962
R 4	78963	78963	78963
S Bell	78980	78980	78980
T 5	78964	78964	78964
U 7	78965	78965	78965
V ⊕	89424		
V :		78966	78966
W 2	78967	78967	78967
X /	78968	78968	78968
Y 6	78969	78969	78969
Z +	89422		
Z v		78970	78970
-	89413		
Figs.	78972	78972	78972
Ltrs.	78973	78973	78973
Car. Ret.	78976	78976	78976
Line Feed	78978	78978	78978
Blank		78971	78971

NUMERICAL INDEX

M-191	Magnet - 19 Ohms, 8,10	2504	Insulator, 5	70314	Washer, 2
M-194	Magnet - 500 Ohms, 12	2526	Collar, 5	70319	Upatop - Leather, 2
33-15	Screw (2-56 x 1/8), 3	2529	Bushing - Bakelite, 5	70324	Bearing, 1
33-50	Screw (4-40 Shoulder), 12, 14	2565	Key Lever Spring, 2	70529	Stiffener, 12
33-86	Screw (4-40 x 1/8), 5	2623	Spring, 5	70834	Copyholder - Black Gloss, 15
33-110	Screw (4-40 x 3/16), 11	2669	Lock Washer, 1,2,6,8,9,10, 11,13,14,16	71161	Bushing, 5
33-198	Screw (6-40 x 1/4), 3	2832	Lock Washer, 13	72472	Shim, 1
33-213	Screw (3-56 Pilot), 12	2922	Nut (3/16-24 Square), 2	72473	Spring, 15
33-227	Screw (4-40 Shoulder), 14	3438	Washer, 4,6,8,10,13,14	72501	Shaft, 1
33-344	Screw (10-32 x 3/4), 9,11	3595	Nut (1/4-32 Hex.), 8,10	72635	Shim, 12
33-350	Screw (4-40 x 3/16), 8	3598	Nut (6-40 Hex.), 1,2,5,8, 9,10,11,14,15,16	73481	Tape Tension Lever, 9, 11
34-4	Nut (10-32 Hex.), 6,16		Nut (4-40 Hex.), 5,8,9,10, 11,12	73482	Stud, 9,11
34-11	Nut (2-56 Hex.), 14	3599	Nut (5/32-40 Hex.), 8,10	73641	Message Line Guide, 15
34-48	Nut (6-32 Hex.), 1,15,16		Nut (6-40 Hex.), 1	73894	Screw (6-40 x 1/8 Set), 13
34-56	Nut (4-40 Hex.), 5,6,12,14	3604	Lock Washer, 1,5 to 12,15	73946	Nut (6-40 Thumb), 8
34-66	Nut (4-36 Hex.), 15	3606	Lock Washer, 4	74001	Shaft, 5
35-89	Spring, 5	3640	Washer - Brass, 11	74014	Screw (10-32 x 3/4), 8, 9,10,11
35-116	Spring, 9,11	3646	Oil Wick - Felt, 5		Screw (6-40 x 7/32), 7
103-27	Washer, 6,8,9,10,11,12	3650	Stiffener, 5	74059	Screw (1/4-32 Thumb), 1
122-48	Lamp Socket, 13	4810	Nut (3/16-40 Hex.), 12	74525	Bracket, 1
122-50	Lamp - Red - 110 V., 13	4881	Screw (2-56 x 1/4), 9,11	74529	Terminal Block, 1
122-80	Shedder Guide, 9,11	5475	Screw (6-40 x 3/16), 13	74569	Cable - Keyboard, 1
122-84	Dowel, 9,11	5740	Screw (6-40 x 5/16), 1,2, 5,6,7	74572	Terminal Block (Assem.), 1
122-86	Dowel, 9,11	6390	Screw (6-40 Shoulder), 5	74589	Retaining Ring, 1
122-365	Code Punch - Large, 9,11	6746	Screw (6-40 Shoulder), 5	74594	Gear - 24T, 5
122-577	Feed Roll, 9,11	6800	Screw (6-40 x 3/16 Set), 8,10	74595	Screw (4-40 x 1/4), 5, 8,10,12
122-697	Eccentric, 8,10	6805	Screw (10-32 x 3/8), 13,14	74613	Door Spring, 14
700-60	Screw (0-80 x 1/8), 12	6807	Screw (6-40 x 5/8), 5,8,10, 13	74637	Resistor - 1600 Ohms (800-800), 4
1012	Screw (6-40 Shoulder), 13	6810	Screw (6-40 Pilot), 4,5	74691	Spring Post, 8,10
1026	Screw (6-40 x 3/8), 5,9,11	6811	Screw (4-40 x 9/32 Eccentric), 5	74692	Spring, 8
1028	Screw (4-40 x 1/4), 8,10,11	6814	Washer, 9	74700	Bushing, 6
1030	Screw (6-40 Shoulder), 14, 15	6942	Washer, 1 to 6, 8 to 11, 13 to 16	74728	Terminal, 12
1038	Screw (6-40 x 9/32), 1,2, 6,15	7001	Pawl, 5	74751	Trip-off Pawl, 1
1046	Screw (6-40 Shoulder), 12	7002	Spacer, 16	74759	Strip - Felt, 14
1051	Screw (4-40 x 1/2), 12	7032	Contact Lever, 5	74762	Key Lever - Lower, 1
1072	Screw (6-40 Thumb), 14	7037	Post, 1	74798	Screw (6-40 x 31/64), 10,11
1159	Screw (4-40 x 3/8), 8,9,10	7318	Bearing, 5	74805	Screw (10-32 x 3/4), 9,11
1160	Screw (6-40 x 5/16), 8,10, 12	7334	Bushing, 5	74808	Bushing, 5
1161	Screw (6-40 x 1/4), 8,9,10, 11,12	7372	Lock Loop, 5	74826	Covering Strip - Black Gloss, 14
1162	Screw (4-40 x 1/4), 7,8,9, 10,12	7373	Contact Mounting (Assem.), 5	74833	Copyholder - 6" (Assem.) Black Gloss, 15
1163	Screw (4-40 x 3/16), 1,6, 12,13	7377	Bracket - Front, 5	74891	Shim, 1,5
1164	Screw (2-56 x 3/16), 9,11	7381	Oiler, 5	74892	Shim, 1
1168	Screw (4-40 x 5/16), 8,10, 12	7382	Bracket - Rear, 5	74894	Name Plate, 14
1169	Screw (6-40 x 7/16), 1,8,9, 10,11,13	7383	Post, 5	74917	Pad Retainer, 14
1174	Screw (4-40 Shoulder), 8,10	7385	Brace, 5	74952	Screw (4-40 x 5/8), 6
1176	Screw (6-40 x 3/16), 7	7386	Driving Clutch, 5	74964	Contact Spring, 12
1179	Screw (6-40 x 5/8), 9,16	7387	Driven Clutch, 5	74965	Bushing - Bakelite, 9, 11
1187	Screw (10-32 x 1/4), 1,2,9, 10,11,13	7389	Clutch Lever, 5	74986	Screw (6-40 x 13/32), 1,2,4
1196	Screw (6-40 Shoulder), 8,10	7391	Spring, 12	75087	Screw (6-32 Shoulder), 16
1206	Screw (4-40 x 9/16), 9	7409	Spring, 8,9,10	75121	Shedder, 9,11
1207	Screw (4-36 x 5/16 Flat Head), 16	7618	Cam Sleeve, 5	75437	Test Key, 1
1215	Screw (6-40 Shoulder), 8	7965	Washer, 1,8,10,12,16	75606	Spring, 5
1223	Screw (10-32 x 1/2), 13	8097	Stop Plate, 15	75607	Washer, 5
1245	Screw (10-32 x 1), 13	8330	Screw (6-40 x 1/2), 2,3,5,6, 7,9,11	75750	Washer - Bakelite, 4
1248	Screw (6-40 x 1/2), 2,4	8514	Screw (6-40 x 1/4), 3,8,9,10, 11,13,15,16	76099	Washer, 8,10,14
1268	Screw (.138-40 x 5/16), 2,13	8539	Filler - Wood, 15	76117	Terminal Block (Assem.), 11
1269	Screw (6-40 x 1/2), 8,9,10, 11,12	8543	Shim, 5	76382	Contact Spring, 6
1291	Screw (6-32 x 3/4), 15	8686	Pad Retainer, 14	76461	Washer, 14
1294	Screw (4-36 x 1/2), 15	8896	Contact Stop, 5	76790	Bushing - Bakelite, 12
1297	Screw (6-40 x 2-7/16), 4	8990	Contact Spring, 5	77040	Contact Spring, 12
2034	Washer, 5,8,10,15	9177	Shaft, 5	77362	Resistor - 350 Ohms, 6
2191	Lock Washer, 1 to 16	9178	Key Lever - Center, 1	77377	Hook - Left, 16
2199	Nut (7/16-32 Hex.), 5	9182	Key Lever - Upper, 1	77378	Hook - Right, 16
2322	Lock Washer, 8,10	9209	Screw (10-32 x 3/8), 16	77399	Rivet, 16
2382	Lock Washer, 8,10,13	9210	Washer, 1	77698	Bolt, 2
2407	Lock Washer, 5	35551	Washer, 5,6,7	77876	Post, 1
2410	Tape Guide Spring, 9,11	36273	Washer, 12	77984	Guide Plate, 9,11
2422	Lock Washer, 9,11	41663	Contact Spring, 6	77986	Wearing Strip, 9,11
2438	Washer - Brass, 8,10	41675	Clamp Plate, 6,9,11,12	78011	Condenser - 1 M.F., 2
2502	Mounting Strip, 5	41720	Insulator, 6,9,11,12		
2503	Cover Plate, 5	41732	Spring, 8		
		41733	Spacer, 12		
		45104	Washer, 8		
		46042			
		55005-0			

78075	Screw (6-40 Shoulder), 1	81593	Armature Shaft, 9,11	83320	Selector Bar "D-1", 3
78550	"Y" Lever Guide, 3	81596	Screw (10-32 x 1-3/8), 8,10	83321	Selector Bar "D-2", 3
78551	Shaft, 3			83322	Selector Bar "E-1", 3
78552	Retainer, 3	81597	Bracket, 9,11	83323	Selector Bar "E-2", 3
78553	Selector Bar Guide, 3	81598	Bushing, 9,11	83324	Selector Bar "G-2", 3
78596	Washer - Spring, 5	81599	Eccentric, 10	83332	Bracket - Left, 4
78713	Frame, 12	81601	Silencer - Felt, 8,10	83333	Bracket - Right, 4
78720	Ratchet, 12	81603	Tape Knife, 8,10	83335	Key Lever - Offset, 1,2
78723	Eccentric, 12	81605	Ohad Chute Cover, 11	83337	Key Lever - Offset, 1,2
78724	Feed Pawl, 12	81609	Terminal Shield, 8,10	83338	Shaft, 2
78725	Latch Pawl, 12	81638	Collar, 9,11	83342	Slide Plate, 4
78726	Release Latch, 12	81657	Shim, 9,11	83343	Spacing Rod, 5
78727	Latch Bracket, 12	81682	Glass Rail - Right - Black Gloss, 14	83345	Bracket, 1
78728	Bracket, 12			83346	Operating Lever, 5
78729	Armature, 12	81683	Glass Rail - Left - Black Gloss, 14	83348	Extension, 5
78732	Feed Pawl Bracket, 12			83349	Detent Bracket, 5
78733	Release Lever, 12	81684	Fastening Strip, 14	83351	Plate, 6
78734	Contact Cam, 12	81721	Contact Spring, 6	83353	Condenser Cover, 2
78735	Contact Lever, 12	81726	Terminal, 6,9,11	83354	Spacing Rod Bracket, 5
78736	Bracket, 12	81734	Plate, 15	83355	Washer - Fibre, 2
78740	Spring, 12	81749	Cable Clamp, 1	83356	Bracket, 2
78741	Spring, 12	81755	Resistor - 200 Ohms, 2	83357	Counter Bracket, 13
78742	Clamp, 12	81764	Glass, 13	83361	Link Extension, 8,10
78743	Dashpot Cylinder, 12	81765	Pad - Felt, 13	83362	Bearing Bracket, 8,10
78744	Piston, 12	81766	Retaining Ring, 13	83363	Selector Lever #1, 8,10
78745	Cap, 12	81769	Pad - Felt, 13	83364	Selector Lever #2 and #5, 8,10
78746	Screw (3/16-40 x 3/8 Special), 12	81770	Bracket - Left, 13		
		81771	Bracket - Right, 13	83365	Selector Lever #3 and #4, 8,10
78747	Plug, 12	81772	Bushing, 13		
78748	Spring, 12	81773	Screw (4-40 x 29/32), 6	83370	Extension, 9,10,11
78755	Insulator, 12	81793	Guide and Die Plates (Fitted Together), 9,11	83372	Tape Stripper Plate, 11
78758	Contact (Assem.), 12			83374	Locking Lever, 1
78932	Set of Spring Cushion Keytops, 17	81836	Washer - Bakelite, 6	83376	Bearing Rod, 8,10
		82279	Clip, 16	83377	Name Plate, 14
		82281	Guide, 16	83379	Cover, 6
		82392	Shim, 9,11	83384	Back Space Pawl, 8,10
		82399	Pad - Right Side, 14	83385	Back Space Cam, 10
		82401	Pad - Rear - Lower, 14	83390	Tape Tension Spring, 16
		82402	Pad - Rear - Upper, 14	83421	Pad - Left Side, 14
		82403	Pad - Front, 14	83424	Tape Guide, 15
		82404	Retaining Spring, 14	83427	Glass, 15
		82405	Retaining Spring, 14	83428	Glass Rail, 15
		82406	Retaining Spring, 14	83429	Back Spacer, 15
		82408	Retaining Spring, 14	83434	Channel - Rubber, 15
		82409	Retaining Spring, 14	83436	Bracket, 15
		82410	Retaining Spring, 14	83437	Counter Mechanism (Assem.), 12
		82411	Hinge Bracket, 14		
		82412	Hinge Bracket, 14	83441	Nipple, 13
		82413	Cover Stop Arm, 14	83442	Cable Clamp - long, 13
		82414	Cover Detent Knob, 14	83443	Cable - Counter, 13
		82415	Cover Detent Spring, 14	83574	Paper Guide Plate - Black Gloss, 14
		82425	Glass, 14		
		82440	Screw (6-40 x 7/16), 1	83854	Insulating Cloth, 2
		82444	Bushing - Bakelite, 6	83885	Nut (6-32 Hex.), 14
		82547	Insulator, 6	83895	Cable - Resistor, 2
		82607	Spring Cushion Keytop (H Stop), 17	83901	Dial Plate, 13
				83919	Shim, 3
		82702	Screw (6-40 x 9/32), 12	83921	Perforator Bracket, 10,11
		82713	Screw (4-40 x 9/32 Special), 12	83922	Roller, 11
				83923	Bracket, 11
		82720	Screw (6-40 x 1/4 Set), 12	83924	Roller Fork, 11
		82725	Spring, 10	83926	Indicator, 13
		82726	Spring, 10	84023	Spring, 9,11
		82727	Spring, 8,10	84082	Screw (6-40 x 13/32), 9
		82728	Name Plate, 14	84592	Shim, 8,10
		82729	Name Plate, 14	84663	Bracket, 6
		82866	Resistor - 4500 Ohms (800-3700) 4	84664	Screw (4-40 x 1-9/32), 6
				84665	Bushing - Bakelite, 6
		82930	Contact Spring, 6	84675	Contact Spring, 6
		83300	Keyboard Base - Black Gloss, 1,2	84698	Contact Spring, 9,11
				84758	Spring, 8,10
		83302	Key Lever Guide, 1	84767	Contact Spring, 9,11
		83303	Spring Plate, 2	84892	Stiffener, 6
		83305	Selector Bar Bracket, 3	84903	Contact Spring, 6
		83307	Connecting Link - "A", 3	84904	Contact (Assem.), 6
		83308	Connecting Link - "B", 3	84911	Contact Bracket, 5,6
		83309	Connecting Link - "C", 3	84923	Spring - Rear, 6
		83310	Connecting Link - "D", 3	84924	Spring - Front, 6
		83311	Connecting Link - "E", 3	84990	Screw (.138-40 x 1/4), 1
		83312	Connecting Link - "G", 3	85376	Key Lever Spring, 1,2
		83314	Selector Bar "A-1", 3	85384	Bushing, 8,10
		83315	Selector Bar "A-2", 3	85976	Spacer, 8,10
		83316	Selector Bar "B-1", 3	86531	Screw (6-40 Shoulder), 15
		83317	Selector Bar "B-2", 3	86634	Stiffener, 6
		83318	Selector Bar "C-1", 3	86774	Screw (6-40 Shoulder), 8
		83319	Selector Bar "C-2", 3	86854	Perforator Cover - Black Gloss, 15

Spring Cushion Keypops

78946	A - , 17
78947	B ? , 17
78948	C : , 17
78949	D # , 17
78950	E 3 , 17
78951	F ! , 17
78952	G & , 17
78953	H # , 17
78954	I 8 , 17
78955	J ' , 17
78956	K ( , 17
78957	L ) , 17
78958	M . , 17
78959	N , , 17
78960	O 9 , 17
78961	P 0 , 17
78962	Q 1 , 17
78963	R 4 , 17
78964	T 5 , 17
78965	U 7 , 17
78966	V ; , 17
78967	W 2 , 17
78968	X / , 17
78969	Y 6 , 17
78970	Z * , 17
78971	(Blank) , 17
78972	(Figs. ) , 17
78973	(Ltrs. ) , 17
78976	(Car. Ret. ) , 17
78978	(Line Feed) , 17
78980	(S Bell) , 17
80334	Terminal, 6
80402	Screw (4-40 x 15/32), 1
80444	Screw (6-40 x 1/4), 5,13
80471	Spring, 5
80875	Cover Arm, 14
80985	Screw (4-40 x 1/4), 14
80986	Lock Washer, 14
81433	Shim, 2
81501	Magnet Core, 8,10
81515	Punch Holder, 9,11
81524	Selector Finger, 8,10
81530	Adjusting Screw - Right, 8,10
81531	Adjusting Screw - Left, 8,10
81532	Bumper - Leather, 8,10
81553	Feed Pawl, 10
81564	Screw (6-40 x 3/8 Special), 8,9,10,11

86856 Tape Reel Container - Black Gloss, 16  
 86861 Tape Reel Cover - Black Gloss, 16  
 86865 Chad Chute, 9,11  
 86871 Bracket - Black Gloss, 14  
 86919 Lock Plate, 8,10  
 86920 Star Wheel, 8,10  
 87174 Retaining Plate - Black Gloss, 1  
 87175 Counter Cover, 13  
 87176 Shield - Black Gloss, 13  
 87177 Counter Casting - Black Gloss, 13  
 87528 Counter Cover (Assem.) - Black Gloss, 13  
 87636 Screw (2-56 x 3/16), 14  
 87936 Bracket, 15  
 87937 Bracket (with Rod), 15  
 88877 Lacing - Black, 14  
 88995 Post, 1  
 89070 Cutout Lever, 5  
 89071 Bushing, 5  
 89072 Spring, 1  
 89073 Extension, 5  
 89074 Stud - Eccentric, 5  
 89086 Tape Reel, 16  
 89087 Core, 16  
 89088 Filler - Wood, 16  
 89089 Tape Retainer, 16  
 89330 Key Lever Spring, 1,2  
 89354 Strap, 2,13  
 89410 Set of Spring Cushion Keytops, 17

Spring Cushion Keytops

89413 - , 17  
 89414 A ↑ , 17  
 89415 D ↘ , 17  
 89416 F → , 17  
 89417 G ↘ , 17  
 89418 H ↓ , 17  
 89419 J ↗ , 17  
 89420 K ← , 17  
 89421 L ↘ , 17  
 89422 Z + , 17  
 89423 O ○ , 17  
 89424 V ⊙ , 17  
 89425 B ⊕ , 17  
 89426 N ⊙ , 17  
 89493 Spacer Bar Loop, 1  
 89494 Spacer Key Lever, 1  
 89495 Spacer Bar, 1  
 89496 Shaft, 1  
 89498 Armature Lever, 10,11  
 89499 Selector Finger Guide, 9,11  
 89500 Feed Punch - Small, 9,11  
 89504 Punch Block (Assem.) 5 Unit - Straight Feed Hole, 9,11  
 89896 Oil Cup, 5  
 89897 Nut (10-32 Hex.), 5  
 89917 Screw (4-40 Eccentric), 5  
 89963 Eccentric, 8,10

89974 Contact (Assem.), 6  
 90260 Spring, 5  
 90421 Spacer - Rear, 13  
 90438 Button - Felt, 5  
 90951 Lock Washer, 8  
 91003 Repeat Space Extension, 1  
 91120 Spring, 1,5  
 91205 Detent (Assem.), 8,10  
 91214 Perforator Cover - Black Wrinkle, 15  
 91215 Bracket - Black Wrinkle, 14  
 91216 Tape Reel Cover - Black Wrinkle, 16  
 91217 Tape Reel Container - Black Wrinkle, 16  
 91222 Covering Strip - Black Wrinkle, 14  
 91223 Paper Guide Plate - Black Wrinkle, 14  
 91514 Glass Rail - Left - Black Wrinkle, 14  
 91515 Glass Rail - Right - Black Wrinkle, 14  
 91540 Counter Control Unit, 4  
 91543 Bracket, 8,10  
 91544 Spring Adjusting Lever, 8,10  
 91545 Extension, 8,10  
 91546 Screw (10-32 Shoulder), 8,10  
 91547 Bracket, 9,11  
 91548 Bushing, 8,10  
 91550 Contact Operating Lever, 8,9, 10  
 91554 Universal Bar, 4  
 91555 Contact Bracket, 9,11  
 91556 Contact Lever, 8,10  
 91558 Selector Lever Guide, 8,10  
 91559 Feed Punch Selector Lever, 8, 9,10  
 91562 Screw (10-32 x 2-1/2), 6  
 91564 Armature, 10,11  
 91565 Shim, 2,4  
 91568 Contact Spring, 6  
 91571 Contact (Assem.), 6  
 91573 Contact Spring, 6  
 91574 Bracket, 6  
 91575 Cover, 6  
 91576 Cable - Perforator, 13  
 91577 Spring, 8,10  
 91733 Filter Bracket, 7,9  
 91734 Filter Bracket, 7  
 91739 Insulator, 1  
 91743 Set of Spring Cushion Keytops, 17  
 91751 Copyholder - Black Wrinkle, 15  
 91752 Copyholder - 6" (Assem.) - Black Wrinkle, 15  
 92170 Filter Bracket, 5,7  
 92204 Cable, 13  
 92216 Filter (Assem.), 7  
 92222 Filter Unit (Assem.), 7  
 92224 Filter Unit (Assem.), 7  
 92225 Filter Unit (Assem.), 7

92505 Shielding Tube, 7  
 92511 Roller, 5  
 94086 Spacing Rod Bracket, 5  
 94087 Extension, 5  
 94088 Spacing Rod, 5  
 94248 Cable Clamp, 1,2,9,10,11  
 94249 Cable Clamp, 2  
 96871 Detent Lever, 8,10  
 96872 Roller, 8,10  
 96873 Journal, 8,10  
 96883 Terminal, 1  
 97631 Adjusting Bracket, 9  
 97632 Bracket, 8  
 97633 Feed Pawl Lever, 8  
 97634 Feed Pawl, 8  
 97635 Armature Lever, 9  
 97637 Eccentric, 8  
 97638 Guide, 9  
 97639 Spring Post, 8  
 97640 Spring Post, 8  
 97641 Armature, 8,9  
 97642 Bumper - Leather, 8  
 97643 Back Space Lever, 8  
 98841 Bracket, 9  
 99871 Counter Bracket, 13  
 99872 Lamp Bracket, 13  
 99873 Perforator and counter Unit Cover (Assem.) - Black Wrinkle, 15  
 99875 Perforator and counter Cover, 15  
 99876 Back Spacer, 15  
 99878 Clamp Bushing, 13  
 99881 Cable - Counter and Perforator, 13  
 99882 Channel - Rubber, 15  
 99885 Tape Stripper Plate, 8  
 99887 Retaining Bracket, 9  
 99888 Link Extension - Upper, 8  
 99989 Link Extension - Lower, 8  
 101435 Tape Reel Container (Assem.) - Black Wrinkle, 16  
 101456 Screw (6-32 x 9/32), 1  
 101476 Strip - Felt, 15  
 102313 Perforator Unit Cover (Assem.) - Black Wrinkle, 15  
 102482 Perforator Unit Cover (Assem.) - Black Gloss, 15  
 102485 Tape Reel Container (Assem.) - Black Gloss, 16  
 103386 Terminal Guard, 12  
 103453 Counter Mechanism (Assem.), 12