

FIG. 1

Dist. Class. 600AC

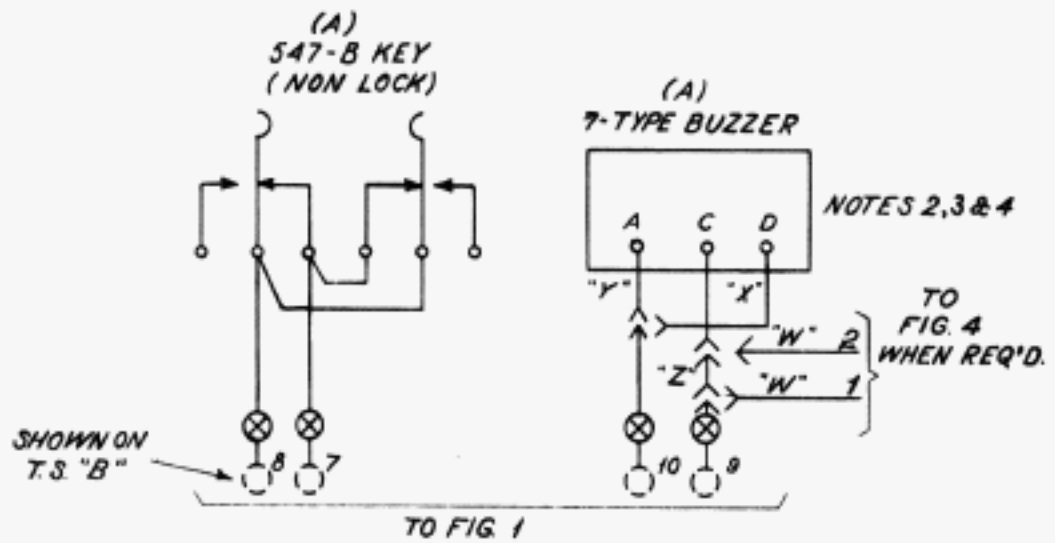
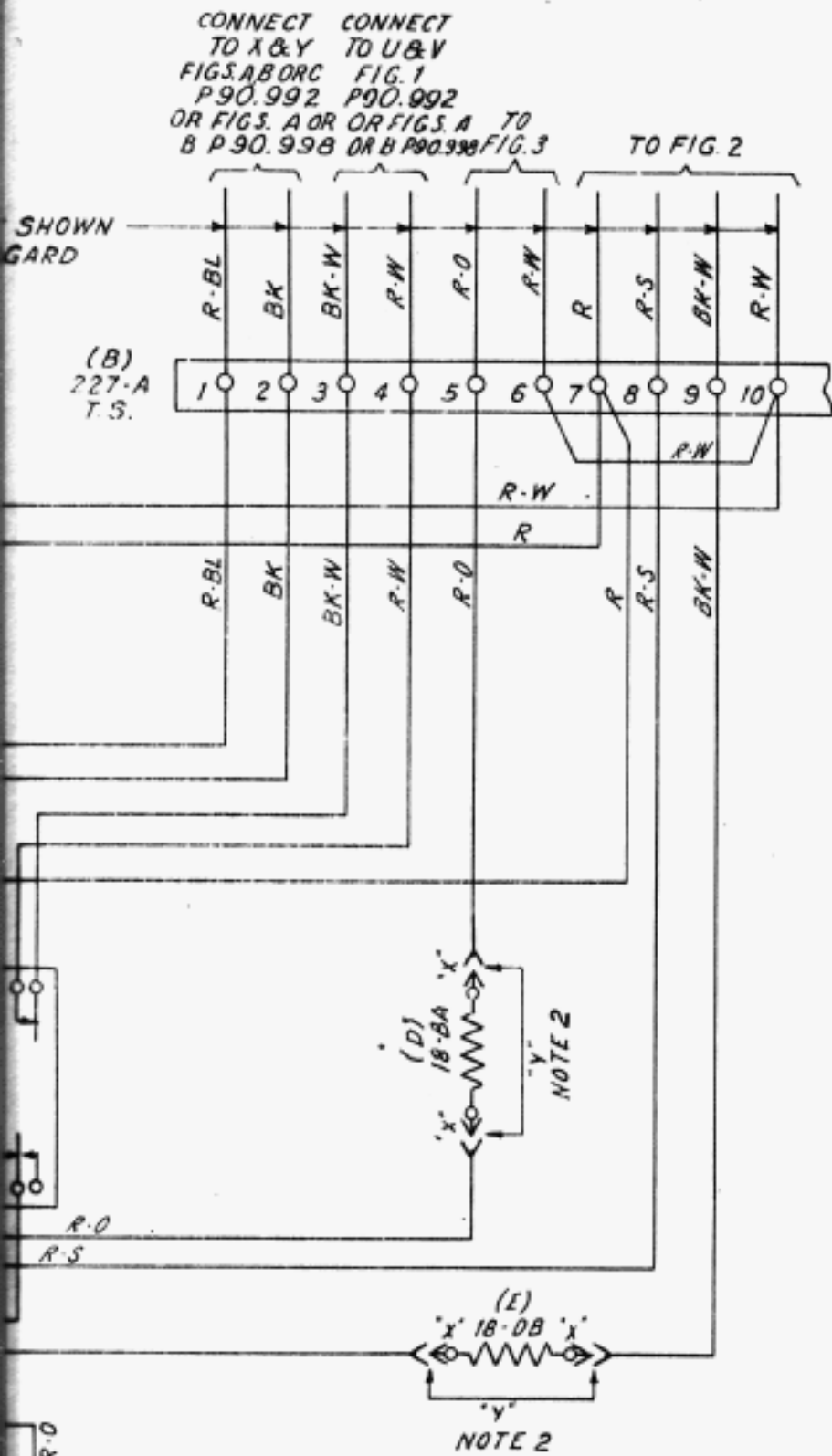


FIG. 2

NOTES

- ① REPRODUCED FROM DWG. 20824-T-131
- ② USE "X" WIRING AND APPARATUS FOR D.C. POWER OPERATION AND "Y" WIRING FOR A.C. POWER OPERATION.
- ③ USE 7-E BUZZER FOR 60<sup>v</sup>A.C., 7-A FOR 25<sup>v</sup> A.C., AND 7-F FOR D.C.
- ⊗ H.B. JONES NO. 10-141 TERM. STRIP OR EQUIVALENT ON TTY. TABLE.
- ④ USE "W" WIRING IF (B) KEY IS REQUIRED. OTHERWISE USE "Z" WIRING.
5. WIRING NOT OTHERWISE SPECIFIED TO BE 22 C.

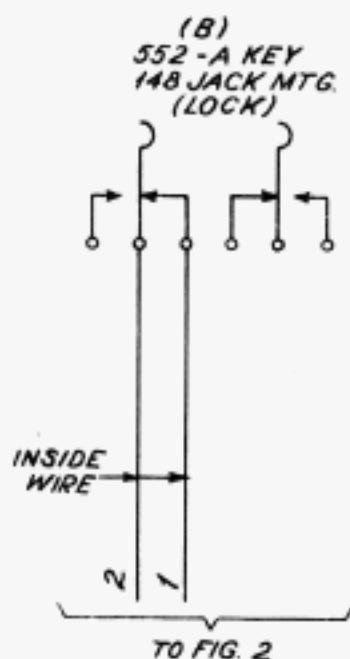


FIG. 4  
(NOTE 4)

- ⑥ USE 59D (115<sup>w</sup>) RESISTANCES FOR FIG. 7 OF B.S.P. P. 90.983. WHEN THAT FIGURE IS USED.
- ⑦ SCHEMATIC SHOWN ON P. 90.990. EQUIPMENT SHOWN ON 20824-ED-131.

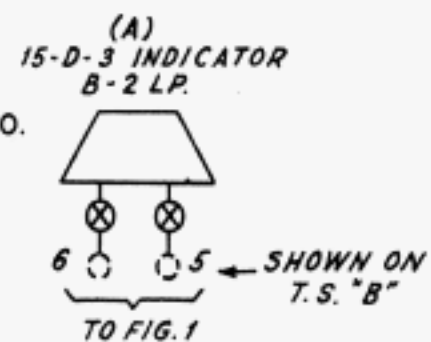


FIG. 3

64-C-1 SELECTOR SYSTEM

APPLIQUE CIRCUIT TO PERMIT DISCONNECTION AND CONNECTION OF TTY TO BE USED WITH P90.983 WIRING