

**NOTE**

SOME ITEMS ILLUSTRATED MAY NOT BE REQUIRED FOR ALL SETS AT A GIVEN LOCATION. LOCATE INDIVIDUAL ITEMS IN POSITIONS SHOWN EVEN THOUGH ALL ARE NOT PROVIDED AT A GIVEN INSTALLATION.

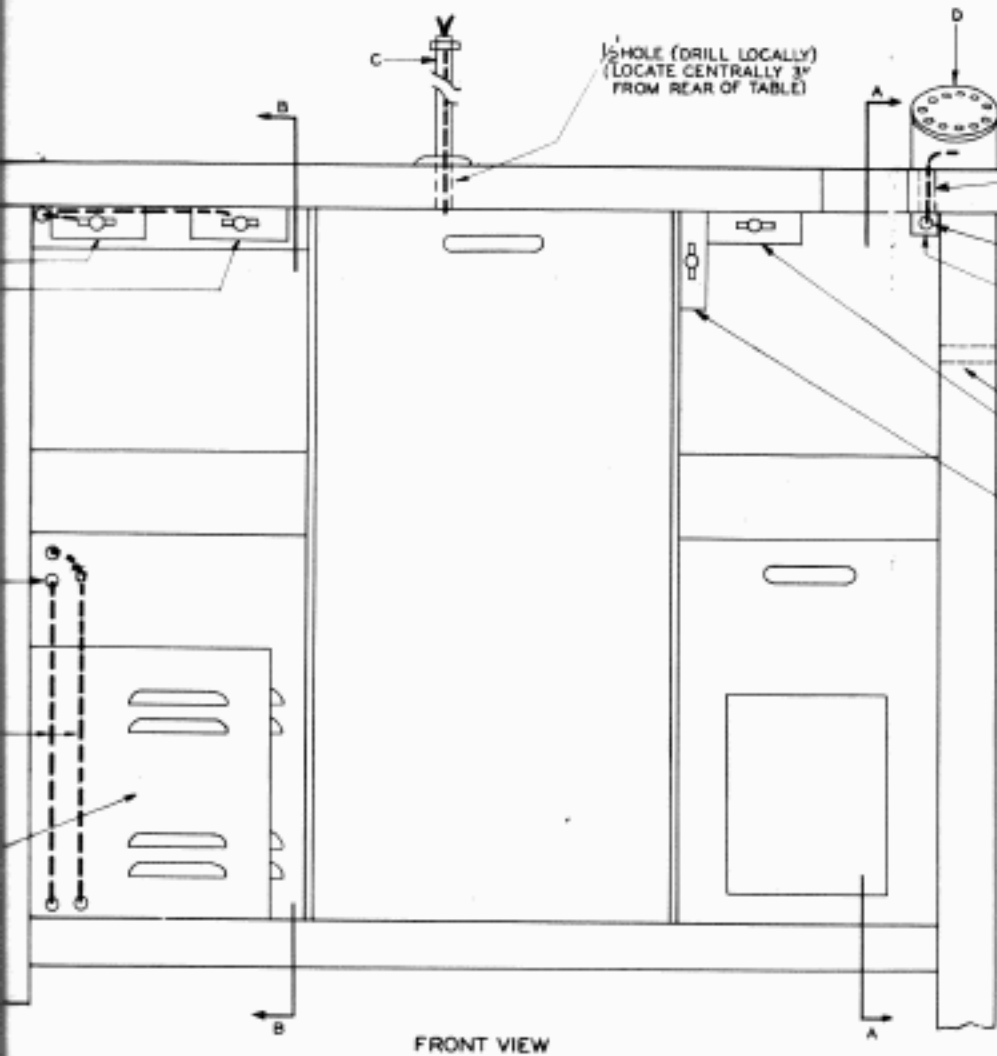
① - PROVIDE THESE DRILLINGS AND WIRING ONLY WHEN 60 TYPE CALLING DIAL AND PULSE DIVIDER CIRCUIT ARE REQUIRED.

② - PROVIDE IF 122 OR 126 TYPE SUB SET IS EMPLOYED.

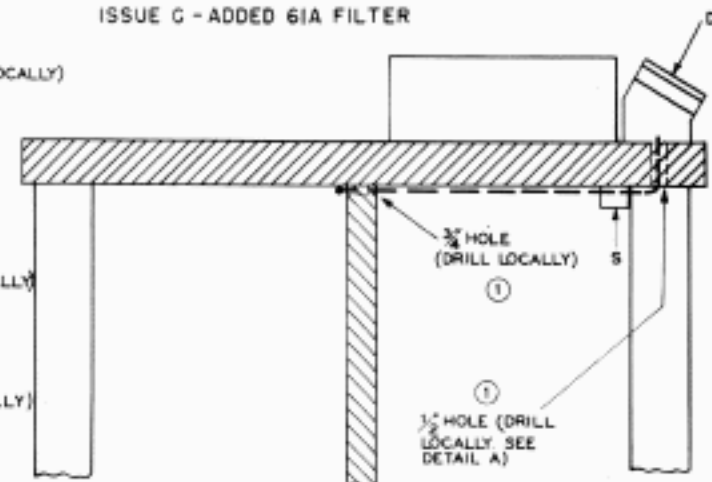
③ - PROVIDE BX CA POWER PANEL.

REPRODUCED F

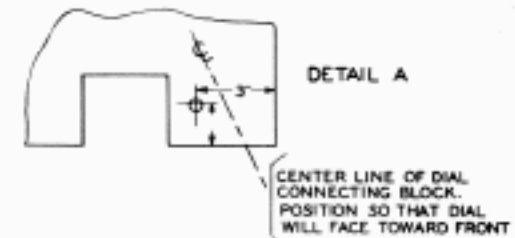
REASON FOR CHANGE:  
ISSUE C - ADDED 61A FILTER



FRONT VIEW  
(102 A TABLE)

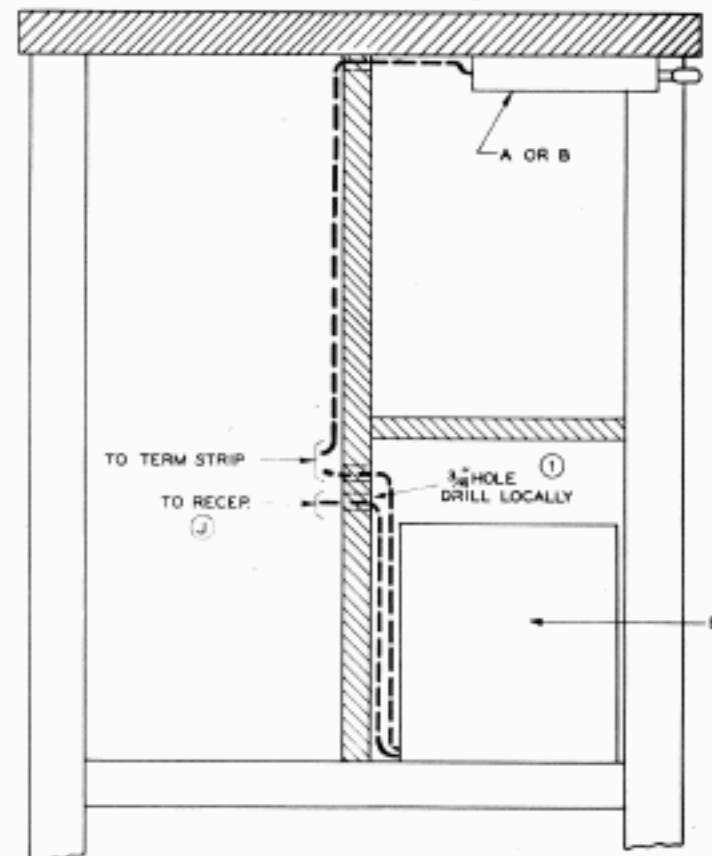


SECTION A-A

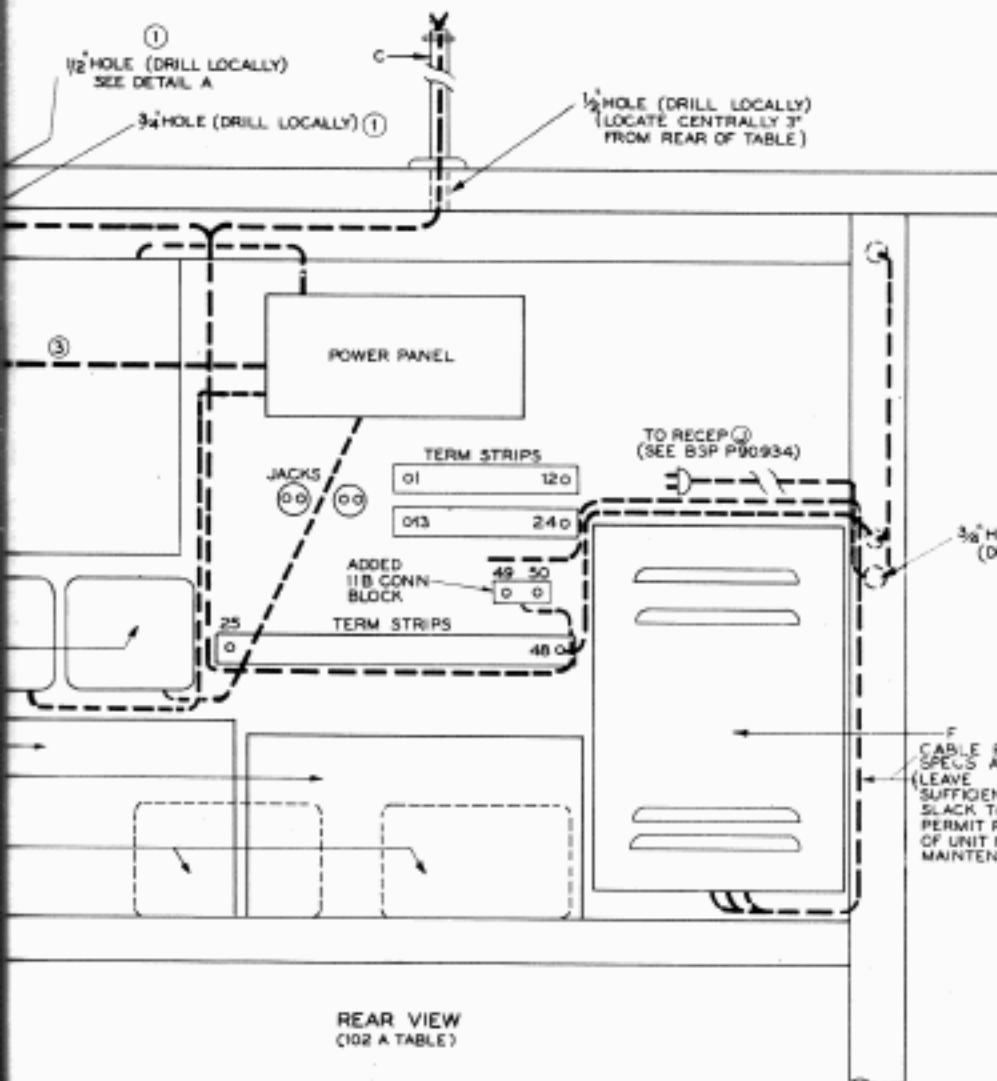


DETAIL A

CENTER LINE OF DIAL  
CONNECTING BLOCK.  
POSITION SO THAT DIAL  
WILL FACE TOWARD FRONT



SECTION B-B



REAR VIEW  
(102 A TABLE)

LEGEND

- A-1 2G KEY UNIT IN 6017 KEY BOX FOR MANUAL OPERATION OF BREAK-TRANSFER CIRCUIT.
- 2 6017B KEY FOR MANUAL TRANSFER OF TRANS-DIST. AND TYR REPERF.
- 3 6017B KEY FOR STARTING AND STOPPING TRANS-DIST. ON ROOM REPERF.
- B-1 6017B KEY FOR SINGLE OR DUPLEX OPERATION OF DUAL SERVICE SETS.
- 2 6017S KEY FOR SINGLE OR DUPLEX OPERATION OF SPARE SETS.
- C-4G LAMP STANDARD WITH NO.12 MAZDA LAMP OR WITH 15 TYPE INDICATORS (SEE BSP P90-986 AND P86-901 APR45 SUB SECTION 2 FOR DETAILS) OR WITH 21 TYPE INDICATORS FOR 60 TYPE SELECTOR (RECEIVING CIRCUIT)
- D-60 TYPE SELECTOR CALLING CIRCUIT DIAL.
- E-60 TYPE SELECTOR PULSE DIVIDING CIRCUIT.
- F-BREAK-TRANSFER CIRCUIT PER L.L.DWG. 20954-ED-119.
- G-POWER FACTOR CORRECTORS (SEE DWG-20975-131)
- H-122 A POWER LEADS FILTERS (ONE FOR AC LEADS + ONE FOR DC LEADS WHEN REQUIRED)
- K-2HY KEY UNIT IN 6017 KEY BOX FOR 60 TYPE SELECTOR CALLING CIRCUIT DIAL.
- L-547B BUZZER RESTORE KEY IN 148 JACK MTG. FOR 60 TYPE SELECTOR (RECEIVING CIRCUIT)
- M-KS 5579 RECTIFIER
- N-JB6205J
- P-151-A-1 TELETYPEWRITER RESISTANCE UNITS.
- R-122 OR 126 TYPE SUBSCRIBER SET OR 7 TYPE BUZZER FOR 60 TYPE SELECTOR (RECEIVING CIRCUIT)
- S-61-A FLTR IF OTHER THAN 34-D DIAL MTG. IS EMPLOYED. (FASTEN WITH #6 X 1/2 RHW SCREW - P-160775)

F  
CABLE PER  
SPEC AT-6783  
(LEAVE  
SUFFICIENT  
SLACK TO  
PERMIT REMOVAL  
OF UNIT FOR  
MAINTENANCE)

③ - PROVIDE BX CABLE OF SUFFICIENT LENGTH TO REACH  
POWER PANEL.

REPRODUCED FROM DWG. 20979-124

TELETYPEWRITER SYSTEMS

102 A TABLE  
SUGGESTED ARRANGEMENT OF EQUIPMENT  
ON BASIS OF PROVIDING BREAK-TRANSFER  
CIRCUIT AND 60 TYPE SELECTOR

NOTE

SOME ITEMS ILLUSTRATED MAY NOT BE REQUIRED FOR ALL SETS AT A  
GIVEN LOCATION. LOCATE INDIVIDUAL ITEMS IN POSITIONS SHOWN  
EVEN THOUGH ALL ARE NOT PROVIDED AT A GIVEN INSTALLATION.

- ① - PROVIDE THESE DRILLINGS AND WIRING ONLY WHEN  
60 TYPE CALLING DIAL AND PULSE DIVIDER CIRCUIT  
ARE REQUIRED.
- ② - PROVIDE IF 122 OR 126 TYPE SUB SET IS EMPLOYED.