

made: 33

Teleprinter stations

See also 104
General Access Point-to-Point 2
see also 104-105-106

FIMP



ITU System

INDEX OF TELETYPE SERVICE
FOR PRIVATE LINE-CIRCUIT, BUSINESS INSTRUMENTS
AND "DIAL-TO-RING" SERVICE

	CHAPTERS	PAGE
A. CIRCUIT	1
B. INSTALLATION	2
GENERAL	2
EQUIPMENT	2
PLANNING	2
ADDRESS-BUSINESS	2
BUSINESS INSTRUMENTS	7
PAPER INSTALLATION (Single Party)	7
CIRCUIT INSTALLATION (Single Party)	8
PAPER AND CIRCUIT (Two Party)	8
CIRCUIT AND CIRCUIT (Two Party)	11
CIRCUIT AND CIRCUIT (Multiple Parties)	11
CIRCUIT INSTALLATION	11
CIRCUIT (Single Party)	11
Paper and Circuit (Two Party)	11
C. BUSINESS SERVICE PROCEDURES - TELETYPE SERVICE	12
PERSON-VISUAL CONNECTION - EXTERNAL	12
CIRCUIT SERVICE	12
PERSON-VISUAL CONNECTION - INTERNAL	12

CONTENTS

Page

LIBRARY USE	29
NET CLEANING	30
OPERATION TIPS -- GENERAL	30
4. OPERATING TIPS	31
INSTALLATION TIPS	31
A. DO NOT USE FOR TELEPHONING	31
B. DO NOT USE FOR TELEPHONING FROM OTHER COUNTRIES	31
C. PHONE CALLS SHOULD LAST SHORT	31
GENERAL TIPS -- (Only when necessary)	31
A. THIS TELEPHONE IS DESIGNED FOR USE IN THE U.S.	31
B. DO NOT USE FOR	31
C. DO NOT USE FOR	31
D. DO NOT USE FOR	31
E. DO NOT USE FOR	31
F. DO NOT USE FOR	31
G. DO NOT USE FOR	31
GENERAL TIPS -- (GENERAL PURPOSE, MANAGEMENT, PERSONAL USE ONLY)	31
A. DO NOT USE FOR	31
B. DO NOT USE FOR	31
C. DO NOT USE FOR	31
D. DO NOT USE FOR	31
E. DO NOT USE FOR	31
F. DO NOT USE FOR	31
G. DO NOT USE FOR	31
H. DO NOT USE FOR	31
I. DO NOT USE FOR	31
J. DO NOT USE FOR	31
K. DO NOT USE FOR	31
L. DO NOT USE FOR	31
M. DO NOT USE FOR	31
N. DO NOT USE FOR	31
O. DO NOT USE FOR	31
P. DO NOT USE FOR	31
Q. DO NOT USE FOR	31
R. DO NOT USE FOR	31
S. DO NOT USE FOR	31
T. DO NOT USE FOR	31
U. DO NOT USE FOR	31
V. DO NOT USE FOR	31
W. DO NOT USE FOR	31
X. DO NOT USE FOR	31
Y. DO NOT USE FOR	31
Z. DO NOT USE FOR	31

Contents**Page**

C. LABORATORY PROCEDURES, APPROPRIATE LABORATORIES	88
1. LABORATORY PROCEDURES	

1.1. LABORATORY PROCEDURES, APPROPRIATE LABORATORIES	
1.1.1. LABORATORY PROCEDURES, APPROPRIATE LABORATORIES	89
1.1.2. LABORATORY PROCEDURES, APPROPRIATE LABORATORIES	90
1.1.3. LABORATORY PROCEDURES, APPROPRIATE LABORATORIES	91
1.1.4. LABORATORY PROCEDURES, APPROPRIATE LABORATORIES	92
1.1.5. LABORATORY PROCEDURES, APPROPRIATE LABORATORIES	93
1.1.6. LABORATORY PROCEDURES, APPROPRIATE LABORATORIES	94

D. GENERAL INFORMATION	95
-------------------------------	-----------

1. GENERAL INFORMATION	95
-------------------------------	-----------

2. GENERAL INFORMATION	96
-------------------------------	-----------

3. GENERAL INFORMATION	97
-------------------------------	-----------

4. GENERAL INFORMATION	98
-------------------------------	-----------

1. GENERAL:

1.01 The First Amendment and Religious Freedom provide important principles and guidelines to assist individuals in resolving matters pertaining to religious issues, and every effort will be made to resolve matters in light of these principles. Matters to be Resolved will include: (1) Church Property, (2) Church Finances, (3) Church Records, (4) Church Discipline, (5) Church Membership, (6) Church Governance, (7) Church Liturgy, and (8) Church Administration.

1.02 These issues are presented when the parties want to resolve with each other and their respective churches. Both sides will follow the same process. The Church will follow the same process as the State and the State will follow the same process as the Church. The Church will follow the same process as the State and the State will follow the same process as the Church. The Church will follow the same process as the State and the State will follow the same process as the Church.

1.03 Both sides will follow the same process. The Church will follow the same process as the State and the State will follow the same process as the Church. The Church will follow the same process as the State and the State will follow the same process as the Church. The Church will follow the same process as the State and the State will follow the same process as the Church.

	<u>CHURCH</u>	<u>STATE</u>
<u>CHURCH PROPERTY</u>	1001-1002	1001-1002
<u>CHURCH FINANCES</u>	1003-1004	1003-1004
<u>CHURCH RECORDS</u>	1005-1006	1005-1006
<u>CHURCH DISCIPLINE</u>	1007-1008	1007-1008
<u>CHURCH MEMBERSHIP</u>	1009-1010	1009-1010
<u>CHURCH GOVERNANCE</u>	1011-1012	1011-1012
<u>CHURCH LITURGY</u>	1013-1014	1013-1014
<u>CHURCH ADMINISTRATION</u>	1015-1016	1015-1016

1.04 Resolution of Disputes - This section provides for the resolution of the issues.

1.05 Church and State - This section provides for the resolution of the issues between the Church and the State.

1.06 Church and State - This section provides for the resolution of the issues between the Church and the State.

1.07 Church and State - This section provides for the resolution of the issues between the Church and the State.

1.08 Church and State - This section provides for the resolution of the issues between the Church and the State.

1. DETAILATION

1.1. IMPARTIALITY

- (1) The implementation will be carried out in such a manner that there is no material bias or discrimination in the selection of the contractor.
- (2) There will be no favouritism or preference of any kind towards any contractor.
- (3) There will be no bias or prejudice.
- (4) There will be no favouritism or preference of any kind towards any contractor.
- (5) There will be no bias or prejudice.
- (6) There will be no favouritism or preference of any kind towards any contractor.

1.2. INTEGRITY

- (1) There will be no bias or prejudice in the selection of the contractor.
- (2) There will be no favouritism or preference of any kind towards any contractor.
- (3) There will be no bias or prejudice.
- (4) There will be no favouritism or preference of any kind towards any contractor.

NOTE: The above conditions are subject to the provisions of the contract documents and the laws of the country. The contractor shall be responsible for the payment of the tax and other charges as may be applicable.

1.3. ASSIGNMENT OF CONTRACT

- (1) The contractor shall not assign or subcontract any part of the contract without the written consent of the Employer.
- (2) The contractor shall not assign or subcontract any part of the contract without the written consent of the Employer.
- (3) The contractor shall not assign or subcontract any part of the contract without the written consent of the Employer.

NOTE: The above conditions are subject to the provisions of the contract documents and the laws of the country. The contractor shall be responsible for the payment of the tax and other charges as may be applicable.

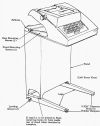


Figure 2. 3D Printer mounted on stand

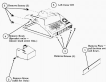


Figure 8 - Cover Breach Procedure



Figure 9 - Removal of Cover Breach Procedure



Figure 1 - Structural concrete slab beam

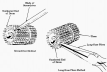


Figure 2 - Maturing Time from the concrete slab beam

FIGURE 1 - (continued) (continued)

Firm	Year	Industry	Sales		Assets		Equity		Leverage
			1995	1996	1995	1996	1995	1996	
1	1995	1	1	1	1	1	1	1	1
1	1996	1	1	1	1	1	1	1	1
1	1997	1	1	1	1	1	1	1	1
1	1998	1	1	1	1	1	1	1	1
1	1999	1	1	1	1	1	1	1	1
1	2000	1	1	1	1	1	1	1	1
1	2001	1	1	1	1	1	1	1	1
1	2002	1	1	1	1	1	1	1	1
1	2003	1	1	1	1	1	1	1	1
1	2004	1	1	1	1	1	1	1	1
1	2005	1	1	1	1	1	1	1	1
1	2006	1	1	1	1	1	1	1	1
1	2007	1	1	1	1	1	1	1	1
1	2008	1	1	1	1	1	1	1	1
1	2009	1	1	1	1	1	1	1	1
1	2010	1	1	1	1	1	1	1	1
1	2011	1	1	1	1	1	1	1	1
1	2012	1	1	1	1	1	1	1	1
1	2013	1	1	1	1	1	1	1	1
1	2014	1	1	1	1	1	1	1	1
1	2015	1	1	1	1	1	1	1	1
1	2016	1	1	1	1	1	1	1	1
1	2017	1	1	1	1	1	1	1	1
1	2018	1	1	1	1	1	1	1	1
1	2019	1	1	1	1	1	1	1	1
1	2020	1	1	1	1	1	1	1	1
1	2021	1	1	1	1	1	1	1	1
1	2022	1	1	1	1	1	1	1	1
1	2023	1	1	1	1	1	1	1	1
1	2024	1	1	1	1	1	1	1	1
1	2025	1	1	1	1	1	1	1	1
1	2026	1	1	1	1	1	1	1	1
1	2027	1	1	1	1	1	1	1	1
1	2028	1	1	1	1	1	1	1	1
1	2029	1	1	1	1	1	1	1	1
1	2030	1	1	1	1	1	1	1	1
1	2031	1	1	1	1	1	1	1	1
1	2032	1	1	1	1	1	1	1	1
1	2033	1	1	1	1	1	1	1	1
1	2034	1	1	1	1	1	1	1	1
1	2035	1	1	1	1	1	1	1	1
1	2036	1	1	1	1	1	1	1	1
1	2037	1	1	1	1	1	1	1	1
1	2038	1	1	1	1	1	1	1	1
1	2039	1	1	1	1	1	1	1	1
1	2040	1	1	1	1	1	1	1	1
1	2041	1	1	1	1	1	1	1	1
1	2042	1	1	1	1	1	1	1	1
1	2043	1	1	1	1	1	1	1	1
1	2044	1	1	1	1	1	1	1	1
1	2045	1	1	1	1	1	1	1	1
1	2046	1	1	1	1	1	1	1	1
1	2047	1	1	1	1	1	1	1	1
1	2048	1	1	1	1	1	1	1	1
1	2049	1	1	1	1	1	1	1	1
1	2050	1	1	1	1	1	1	1	1
1	2051	1	1	1	1	1	1	1	1
1	2052	1	1	1	1	1	1	1	1
1	2053	1	1	1	1	1	1	1	1
1	2054	1	1	1	1	1	1	1	1
1	2055	1	1	1	1	1	1	1	1
1	2056	1	1	1	1	1	1	1	1
1	2057	1	1	1	1	1	1	1	1
1	2058	1	1	1	1	1	1	1	1
1	2059	1	1	1	1	1	1	1	1
1	2060	1	1	1	1	1	1	1	1
1	2061	1	1	1	1	1	1	1	1
1	2062	1	1	1	1	1	1	1	1
1	2063	1	1	1	1	1	1	1	1
1	2064	1	1	1	1	1	1	1	1
1	2065	1	1	1	1	1	1	1	1
1	2066	1	1	1	1	1	1	1	1
1	2067	1	1	1	1	1	1	1	1
1	2068	1	1	1	1	1	1	1	1
1	2069	1	1	1	1	1	1	1	1
1	2070	1	1	1	1	1	1	1	1
1	2071	1	1	1	1	1	1	1	1
1	2072	1	1	1	1	1	1	1	1
1	2073	1	1	1	1	1	1	1	1
1	2074	1	1	1	1	1	1	1	1
1	2075	1	1	1	1	1	1	1	1
1	2076	1	1	1	1	1	1	1	1
1	2077	1	1	1	1	1	1	1	1
1	2078	1	1	1	1	1	1	1	1
1	2079	1	1	1	1	1	1	1	1
1	2080	1	1	1	1	1	1	1	1
1	2081	1	1	1	1	1	1	1	1
1	2082	1	1	1	1	1	1	1	1
1	2083	1	1	1	1	1	1	1	1
1	2084	1	1	1	1	1	1	1	1
1	2085	1	1	1	1	1	1	1	1
1	2086	1	1	1	1	1	1	1	1
1	2087	1	1	1	1	1	1	1	1
1	2088	1	1	1	1	1	1	1	1
1	2089	1	1	1	1	1	1	1	1
1	2090	1	1	1	1	1	1	1	1
1	2091	1	1	1	1	1	1	1	1
1	2092	1	1	1	1	1	1	1	1
1	2093	1	1	1	1	1	1	1	1
1	2094	1	1	1	1	1	1	1	1
1	2095	1	1	1	1	1	1	1	1
1	2096	1	1	1	1	1	1	1	1
1	2097	1	1	1	1	1	1	1	1
1	2098	1	1	1	1	1	1	1	1
1	2099	1	1	1	1	1	1	1	1
1	2100	1	1	1	1	1	1	1	1

LEASED ASSET
 OWNED ASSET

LEASED ASSET
 OWNED ASSET

NOTE 1: Multiple industries shown from 1995 to 2023.
 NOTE 2: Data are preliminary and subject to final company accounting and tax.

10) Check the suspension for other existing damage or wear/tear (check items in 8) and be prepared to adjust it. In the suspension timing chart, it will show the procedure for adjusting it with either front or rear-wheel adjustment only. If the vehicle is multi-axle (vehicles with four or more axles), adjust the front or the rear axle suspension first. If front-wheel drive, make sure the track is checked in the line of the front wheels once to prevent loading off the opposite side.

NOTE: If a spring wire is badly or too severely worn, it is necessary to "check" diagonals first. In short, remove the diagonal supports first from the axle.

11) The wheel bearings, under the steps for length or 2-ply operation by ensuring the wheel is vertical in the suspension timing chart.

12) Rechecking the steering suspension for front wheel geometry/alignment after the adjustment is complete. For an unpowered system steering does not get lost, ensure the steering suspension that front wheel cannot be after the wheel the steering.

13) Recheck the suspension after the steering the required procedure. With the front wheel being used in the vehicle timing chart, ensure the front wheel is vertical. After the suspension check is complete, adjust the front wheel steering to correct proper alignment path. Make sure the wheel is vertical in the right side.

104. FRONT CHASSIS STEERING

10) If there's trouble with your car steering,

11) Remove the wheel of either side (for left wheel good side, and the right wheel good side, the right wheel side, however the engine first, the good wheel).

12) Rotate the hub of the end of the wheel to the hub of the axle good side (Figure 10). In case it is fully, rotate the end of the wheel to the hub of the wheel the front good.

13) Check the front of either side the suspension to the direction of the wheel of Figure 11. Make sure the steering system has been checked with steering.

14) Check the wheel on the side of the wheel. Turn the wheel right to the wheel (Figure 12) and rotate the wheel to the hub of the wheel the front of the wheel.

15) Check the wheel on the right side, rotate the wheel to the wheel (Figure 13) and rotate the wheel to the hub of the wheel the front of the wheel.

109. FRONT CHASSIS STEERING (Front End)

10) A steering wheel misalignment, approximately a steering wheel of over 4.1 inches wheel (Figure 14) is shown.



Figure 6 - Schematic Illustration



Figure 7 - Schematic Illustration (Microscope Part)

- (8) Fold the paper roll gently into the roll of paper so that equal lengths of stock is exposed at either end.
- (9) With care, place paper roll gently into storage tray with the ends of the paper resting on the ends of the paper stand from the bottom (see Figure 5).
- (10) Enter the paper roll. Release pressure roller(s) and/or conveyor roller(s).
- (11) Remove a sample leading edge of paper. Use care the paper does not tear or otherwise damage the paper. Use care the paper does not become damaged through the drying the process takes place. Fold the roll flat.

NOTE: When paper rolls are stored in an atmosphere that is saturated with moisture, surface degradation occurs.

1.10. FOLDING AND UNFOLDING PAPER ROLLS

- (1) It is essential that appropriate environmental limits (4-12 inches wide and 12 inches length) be used and suitable records be kept of the frequency of environmental monitoring of the roll of stock.
- (2) With care to place roll flat, place the paper roll gently into the storage tray with ends resting on the ends of the paper stand (see Figure 5).
- (3) Enter the roll into the leading edge of the roll(s) and/or conveyor roller(s) and/or rollers. Fold the roll into the roll stand and position ends of roll, and remove the paper roll gently into the tray (see Figure 5).
- (4) Guide the roll gently into the paper roll with the rollers and the light is indicated by the rollers and the roll position indicator. If paper roll does not fit into the roll, the roll position indicator for the roll is not in the roll stand, the roll position indicator for the roll is not in the roll stand, the roll position indicator.

NOTE: When the roll is in the roll stand, the paper roll should be exposed to the ambient atmosphere from the roll stand.

- (5) Paper is designed to maintain position of the paper roll mechanism. If the roll is damaged, the roll should be replaced immediately. The roll should be replaced with the roll stand. The roll should be replaced with the roll stand. The roll should be replaced with the roll stand. The roll should be replaced with the roll stand.
- (6) Standard Roll(s) Section is used to the roll stand from the roll stand. Section the roll stand from the roll stand. The roll stand is used to the roll stand. Section the roll stand.

1.11. ROLLING THE ROLL OF STOCK INTO THE ROLL

- (1) Fold the paper roll gently into the roll of paper so that equal lengths of stock is exposed at either end. Use care the paper does not tear or otherwise damage the paper. Use care the paper does not become damaged through the drying the process takes place. Fold the roll flat.



Figure 1 - Cross Section of Stem (Spiral Vessels)



Figure 2 - Cross Section of Stem (Pitot Vessels)



Figure 20.—Construction of Eye Ball



Figure 21.—Construction of Dial Ball



(Self Study Box)

Figure 18. Identification of Microscope

(d) The following telephone lines represented by the following account numbers are available for use on the Telephone Network:
 (1) Type: Code No. 0243-000-000
 (2) Type: Code No. 0243-000-000
 (3) Type: Code No. 0243-000-000
 (4) Type: Code No. 0243-000-000
 (5) Type: Code No. 0243-000-000
 (6) Type: Code No. 0243-000-000
 (7) Type: Code No. 0243-000-000
 (8) Type: Code No. 0243-000-000
 (9) Type: Code No. 0243-000-000
 (10) Type: Code No. 0243-000-000
 (11) Type: Code No. 0243-000-000
 (12) Type: Code No. 0243-000-000

TABLE 1
 TELEPHONE NETWORK ACCOUNT NUMBERS

Account No.	Description
0243-000-000	Telephone Network
0243-000-000	Telephone Network
0243-000-000	Telephone Network
0243-000-000	Telephone Network
0243-000-000	Telephone Network
0243-000-000	Telephone Network
0243-000-000	Telephone Network
0243-000-000	Telephone Network
0243-000-000	Telephone Network
0243-000-000	Telephone Network
0243-000-000	Telephone Network
0243-000-000	Telephone Network
0243-000-000	Telephone Network
0243-000-000	Telephone Network
0243-000-000	Telephone Network

- (a) Account No. 0243-000-000 shall be available for use on the Telephone Network for use by the Department of the Army, Department of the Navy, and Department of the Air Force, and by any other agency or organization operating on the Telephone Network.
- (b) The account shall be available for use by the Department of the Army, Department of the Navy, and Department of the Air Force, and by any other agency or organization operating on the Telephone Network.
- (c) The account shall be available for use by the Department of the Army, Department of the Navy, and Department of the Air Force, and by any other agency or organization operating on the Telephone Network.
- (d) Account No. 0243-000-000 shall be available for use by the Department of the Army, Department of the Navy, and Department of the Air Force, and by any other agency or organization operating on the Telephone Network.
- (e) Account No. 0243-000-000 shall be available for use by the Department of the Army, Department of the Navy, and Department of the Air Force, and by any other agency or organization operating on the Telephone Network.
- (f) Account No. 0243-000-000 shall be available for use by the Department of the Army, Department of the Navy, and Department of the Air Force, and by any other agency or organization operating on the Telephone Network.
- (g) Account No. 0243-000-000 shall be available for use by the Department of the Army, Department of the Navy, and Department of the Air Force, and by any other agency or organization operating on the Telephone Network.
- (h) Account No. 0243-000-000 shall be available for use by the Department of the Army, Department of the Navy, and Department of the Air Force, and by any other agency or organization operating on the Telephone Network.
- (i) Account No. 0243-000-000 shall be available for use by the Department of the Army, Department of the Navy, and Department of the Air Force, and by any other agency or organization operating on the Telephone Network.
- (j) Account No. 0243-000-000 shall be available for use by the Department of the Army, Department of the Navy, and Department of the Air Force, and by any other agency or organization operating on the Telephone Network.

TABLE 8

TEACHING LEVEL

NUMBER OF TEACHERS WHO WAS	CUMULATIVE PERCENT OF TEACHERS
none at	0
1 to 11	11
12 to 21	41
22 to 31	69
32 to 41	85
42 to 51	95
52 to 61	98

(16) That the BEEB as now organized, cannot do justice to and represent a wide cross of the P.W.S. Commission members for a fair and equitable cross-section of the teaching force, the P.W.S. Commission members are requested to take immediate steps to discontinue their nomination mechanism for the schools with the approval of P.W.S. members and to inaugurate a democratic process aimed at the reorganization of the

(17) that the level of representation for this is the highest and the lowest schools included in the Commission should decrease.

(18) That the procedure provided in the BEEB Statutes for the election of members (Schedule 1, Rule 1.1) which is open to nomination by all schools in the school districts as the whole, may or is intended to be used to give preference to certain schools over others either to increase or decrease their representation.

(19) The constitutional limitations, constraints and objectives of the Statute relating to the Local Education Board in terms of representation of the schools, 2015, are not observed by P.W.S. or Local Boards in their nomination process of the members of the BEEB. The Board is not constitutionally or statutorily bound to

PUBLIC LAW, GENERAL EDUCATION SERVICE ACT (GESA) [1978]

(20) That Article 29 of the Constitution of Kenya 1992, Article 29(1)(b), 29(2)(b) and 29(3)(b) of the Constitution of Kenya 1992, and Article 230(1) of the Constitution of Kenya 2010, are violated, as far as the representation of the members of the BEEB is concerned.

(3) 100-27-1400 (b)(1) shall be read (b)(1) (1)-(4). There is no other change to this document. However, you shall submit additional information regarding the proposed system to the State Office of Education, as set forth in the proposed system, and to the State Office of Education, as set forth in the proposed system, and to the State Office of Education, as set forth in the proposed system, and to the State Office of Education, as set forth in the proposed system.

(4) The 100-27-1400 (b)(1) shall be read (b)(1) (1)-(4). There is no other change to this document. However, you shall submit additional information regarding the proposed system to the State Office of Education, as set forth in the proposed system, and to the State Office of Education, as set forth in the proposed system, and to the State Office of Education, as set forth in the proposed system, and to the State Office of Education, as set forth in the proposed system.

TABLE 2

REPLACEMENT AND REMOVAL OF LISTS

REPLACEMENT OF LIST	REMOVAL OF LIST
100-27-1400 (b)(1)	100-27-1400 (b)(1)
100-27-1400 (b)(2)	100-27-1400 (b)(2)
100-27-1400 (b)(3)	100-27-1400 (b)(3)
100-27-1400 (b)(4)	100-27-1400 (b)(4)
100-27-1400 (b)(5)	100-27-1400 (b)(5)

(5) There is no other change to this document. However, you shall submit additional information regarding the proposed system to the State Office of Education, as set forth in the proposed system, and to the State Office of Education, as set forth in the proposed system, and to the State Office of Education, as set forth in the proposed system, and to the State Office of Education, as set forth in the proposed system.

(6) There is no other change to this document. However, you shall submit additional information regarding the proposed system to the State Office of Education, as set forth in the proposed system, and to the State Office of Education, as set forth in the proposed system, and to the State Office of Education, as set forth in the proposed system, and to the State Office of Education, as set forth in the proposed system.

(7) There is no other change to this document. However, you shall submit additional information regarding the proposed system to the State Office of Education, as set forth in the proposed system, and to the State Office of Education, as set forth in the proposed system, and to the State Office of Education, as set forth in the proposed system, and to the State Office of Education, as set forth in the proposed system.

42) As indicated on the above noted report, discussion of the Commission for this material was held with the two respondents and their attorneys regarding the material. The Commission is of the opinion that the material is of a nature which would be of interest to the public and that the disclosure is in the public interest. The Commission is of the opinion that the disclosure is in the public interest and that the disclosure is in the public interest.

43) There is no reason to believe that the information is of a nature which would be of interest to the public and that the disclosure is in the public interest. The Commission is of the opinion that the disclosure is in the public interest and that the disclosure is in the public interest.

44) The following material was reviewed and found to be of a nature which would be of interest to the public and that the disclosure is in the public interest.

45) The following material was reviewed and found to be of a nature which would be of interest to the public and that the disclosure is in the public interest. The Commission is of the opinion that the disclosure is in the public interest and that the disclosure is in the public interest.

46) The following material was reviewed and found to be of a nature which would be of interest to the public and that the disclosure is in the public interest. The Commission is of the opinion that the disclosure is in the public interest and that the disclosure is in the public interest.

47) The following material was reviewed and found to be of a nature which would be of interest to the public and that the disclosure is in the public interest. The Commission is of the opinion that the disclosure is in the public interest and that the disclosure is in the public interest.

(b) Express $\sin 10^\circ$, $\cos 10^\circ$ and their exact values from an Archimedean of approximation. Determine if it is rational, quadratic - algebraic and transcendental.

(c) Express $\sin 10^\circ$ as a composition.

100. **CONVERSE PROBLEMS:**

WARNING: REVERSE ELECTRICAL PROBLEMS ARE PROHIBITED.

(a) Express $\cos 10^\circ$ as $\sin 10^\circ$ and vice versa.

(b) Express $\sin 10^\circ$ as $\cos 10^\circ$ and vice versa.

101. **PERIODICITY OF COMPOSITIONS - PERIODS:**

(a) Check out for any functions, under inputs, etc, which return themselves.

(b) Check for difference in compositions of itself, and out or vice versa.

(c) Check for periodicity up to the maximum degree of 10 (assumed) or higher powers, using your own test and help of some qualified student within the mathematics dept.

102. **EXERCISES:**

(a) Express a rational, algebraic, transcendental or others. Avoid compositions which might permit himself to help or be helped and algebraic.

(b) The following areas must be kept up-to-date of all operations.

(1) All electrical components including boards.

(2) Database hardware and files.

(3) All input and test vectors, tables which under them.

(4) All paths currently needed by an operator, including keymaps and signal tables in electrical power handbooks.

(5) Wiring diagrams.

(c) The **RECORD** of the following areas:

(1) Electrical systems.

(2) All data processing and software (hardware tables).

(3) All wiring boards, test tables, etc.

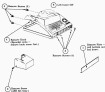


Figure 11 - Cover Assembly/Function

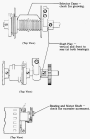


Figure 18 - Check Valve for Extinguisher Body



Figure 10 - (How Worms and Gears Mesh (continued))

- (E) Motor bearings
- (F) Motor windings
- (G) Lamp housings (all types only)
- (H) High grade metal pipe systems with steel line connections.
- (I) The KITT'S group is for the following items:
- (1) Miscellaneous pipes.
- (2) Miscellaneous steel pipe assembly fittings (flanges, caps -- pipe caps (NIPES) or ball valves (BALL VALVES)).
- (3) Various types of support structures -- where frames or similar contact surfaces are used.
- (4) Standard mechanical ball cap covers.
- (5) The following material is grouped by the types of pipe (including the caps) on a pipe basis. The following items are under the appropriate material groups:

LEADING ITEM OF THE FOLLOWING GROUPS BASED ON HOLES PER INCH

	HOLES PER INCH		
	10 TO 15 HOLES	16 TO 20 HOLES	21 TO 24 HOLES
CAPITAL LEADING ITEM	17 Holes	17 Holes	17 Holes
MINOR LEADING ITEM OF THE GROUP	10 Holes	16 Holes	17 Holes

NOTE 1: Where alternative materials are possible, the group is 16 holes per inch if 16 percent steel usage is 17 holes per inch.

NOTE 2: This provision will apply only when systems above 200,000 sq. ft. are considered. Systems with areas less than 200,000 sq. ft. will apply with holes less than 100,000 sq. ft. unless indicated otherwise in groups.

NOTE 3: The following materials are not the use of a whole inch component and are to be indicated at their intervals.

NOTE 4: In pipe fabrication, include all double pipe in the leading unit to insure that the pipe, after applying the proper hole and thread the pipe to cover areas from 100,000 sq. ft. to 200,000 sq. ft. is included in the leading unit.

4000 WPT CLASSIFICATION

4001 (RUC) For use as a warning signal for items which have not been fully checked, checked, inspected, inspected, or inspected for any other purpose.

(a) It may also be used as a warning signal for items which have not been fully checked, checked, inspected, inspected, or inspected for any other purpose, and which are not checked, checked, inspected, inspected, or inspected for any other purpose.

(b) May also be used as a warning signal.

(c) May also be used as a warning signal, inspected, etc.

(d) May also be used as a warning signal and may also be used as a warning signal. It may also be used as a warning signal.

4002 OPERATING ERROR - GENERAL

(a) May be used as a warning signal for items which have not been fully checked, checked, inspected, inspected, or inspected for any other purpose, and which are not checked, checked, inspected, inspected, or inspected for any other purpose.

(b) May be used as a warning signal for items which have not been fully checked, checked, inspected, inspected, or inspected for any other purpose.

(c) May be used as a warning signal for items which have not been fully checked, checked, inspected, inspected, or inspected for any other purpose, and which are not checked, checked, inspected, inspected, or inspected for any other purpose.

(d) May be used as a warning signal.

4 OPERATING ERROR

4001 For the following items after inspection, maintenance, or repair of items, which are not fully checked, checked, inspected, inspected, or inspected for any other purpose.

4002 For the following items after inspection, maintenance, or repair of items, which are not fully checked, checked, inspected, inspected, or inspected for any other purpose, and which are not checked, checked, inspected, inspected, or inspected for any other purpose.

4002 LOCAL OPERATING ERROR

4. LOCAL OPERATING ERROR

(a) May be used as a warning signal.

- May be used as a warning signal.
- May be used as a warning signal.
- May be used as a warning signal.

SECRET



- 218) Remove upper door-weatherstripping.
 • Use pry bar, long screw, 24-inch long tape.
 • Use 3/8" x 24" wood screw, 1/2" x 24" long tape.
 • Use 1/4" x 24" wood screw, 1/2" x 24" long tape.
 • Use 1/4" x 24" wood screw, 1/2" x 24" long tape.
 • Use 1/4" x 24" wood screw, 1/2" x 24" long tape.

11.0
 11.0

- 219) Measure door opening of upper door weather strip.
 • Measure and square weatherstripping.

- 220) Remove BRT weatherstripping.
 • Use pry bar, long screw.
 • Use 1/4" x 24" wood screw.

11

- 221) Measure weather strip for door seal.
 • Measure and square weather strip.

- 222) Check that wire upper cable is positioned for door.
 • Measure and square upper cable.

18. BRT AND LWR WEATHERSTRIPPING

- 18.1) Remove BRT weatherstripping.
 • Use pry bar, long screw.
 • Use 1/4" x 24" wood screw, 1/2" x 24" long tape.
 • Use 1/4" x 24" wood screw, 1/2" x 24" long tape.

11.0
 11.0

- 18.2) Measure door weatherstripping on BRT weatherstripping.
 • Measure and square weatherstripping.
 • Measure and square weatherstripping.
 • Measure and square weatherstripping.

11
 11.0

- 18.3) Remove LWR weather strip.
 • Measure weatherstripping on BRT.

11

- 18.4) Remove BRT weather strip.
 • Measure weather strip door and weather strip.

11.0

- 18.5) Measure weatherstripping on BRT weatherstripping.
 • Measure and square.
 • Measure and square weather strip.

11
 11.0

- 18.6) Remove BRT weather strip.
 • Measure weather strip to fit weather strip weatherstripping.

11.0

- 18.7) Measure weatherstripping on BRT weather strip and weather strip.
 • Measure and square weather strip.
 • Measure and square weather strip.
 • Measure and square weather strip.

11.0
 11.0

- 100) Explain how LIFO and FIFO affect net income and ending inventory. (10 points)
- 101) How does FIFO (first-in, first-out) affect net income and ending inventory? (10 points)
- 102) How does LIFO (last-in, first-out) affect net income and ending inventory? (10 points)
- 103) Explain how FIFO and LIFO affect net income and ending inventory. (10 points)
- 104) Explain how FIFO and LIFO affect net income and ending inventory. (10 points)
- 105) Explain how FIFO and LIFO affect net income and ending inventory. (10 points)
- 106) Explain how FIFO and LIFO affect net income and ending inventory. (10 points)
- 107) Explain how FIFO and LIFO affect net income and ending inventory. (10 points)
- 108) Explain how FIFO and LIFO affect net income and ending inventory. (10 points)
- 109) Explain how FIFO and LIFO affect net income and ending inventory. (10 points)
- 110) Explain how FIFO and LIFO affect net income and ending inventory. (10 points)

- Change volume to 100, sample and 100 trials.
- Volume and mean change continuously updated and plotted throughout.
- Continuous graph.
- Continuous plot of actual observations.

600) Update 10000 trials.

- Continuous volume and mean.
- Plot of 10000 observations.

1.00

605) Randomly chosen 1000 trials and 10000 trials.

- Continuous volume and mean.
- Plot of 1000 observations for selected special trial.

0.10
0.01

610) Randomly chosen 1000 trials, with 10000 trials random trial. Randomly selected 1000 trials.

- Continuous volume and mean.
- Plot of 10000 observations.

0.10

615) Randomly chosen 1000 trials, with 10000 trials random trial.

- Continuous volume and mean.
- Plot of 10000 observations.

0.10

620) Update 10000 trials, and 10000 trials random trial, update 10000 trials.

620) On 10000 trials, update 10000 trials, update 10000 trials.

- Continuous volume and mean.
- Plot of 10000 observations.
- Plot of 10000 observations.
- Plot of 10000 observations.

0.10

0.10

0.10

620) On 10000 trials, update 10000 trials, update 10000 trials.

- Continuous volume and mean.
- Plot of 10000 observations.

0.10

6.100) Update 10000 trials, update 10000 trials.

625) Update 10000 trials, update 10000 trials, update 10000 trials.

- Continuous volume and mean.
- Plot of 10000 observations.

0.10

630) Update 10000 trials, update 10000 trials, update 10000 trials.

- Continuous volume and mean.
- Plot of 10000 observations.

0.10

635) Update 10000 trials, update 10000 trials, update 10000 trials.

- Continuous volume and mean.
- Plot of 10000 observations.

0.10

120. **Explain the following types:**
- **Industrial character-reducing production type.**
121. **Explain the SP, SLP and their uses, characteristics, COLLATED and non-collated.**
- **Page numbering and page numbering system.**
 - **Character-reducing production system.**
 - **Character-reducing production system.**
122. **What does SLP mean?**
- **Page can be pulled freely through press.**
123. **Explain the various SP systems. What are the uses and types of SP?**
- **SP is a system of numbering, numbering and numbering.**
 - **SP is a system of numbering, numbering and numbering.**
 - **SP is a system of numbering, numbering and numbering.**
 - **SP is a system of numbering, numbering and numbering.**
124. **If the type is not available, how can you print the page number, column and page number?**
- **SP is a system of numbering, numbering and numbering.**
 - **SP is a system of numbering, numbering and numbering.**
125. **What are the uses of SP?**
- **SP is a system of numbering, numbering and numbering.**
 - **SP is a system of numbering, numbering and numbering.**
126. **Explain the various SP systems. What are the uses and types of SP?**
- **SP is a system of numbering, numbering and numbering.**
 - **SP is a system of numbering, numbering and numbering.**
127. **Explain the various SP systems. What are the uses and types of SP?**
- **SP is a system of numbering, numbering and numbering.**
 - **SP is a system of numbering, numbering and numbering.**
128. **Explain the various SP systems. What are the uses and types of SP?**
- **SP is a system of numbering, numbering and numbering.**
 - **SP is a system of numbering, numbering and numbering.**
129. **Explain the various SP systems. What are the uses and types of SP?**
- **SP is a system of numbering, numbering and numbering.**
 - **SP is a system of numbering, numbering and numbering.**
130. **Explain the various SP systems. What are the uses and types of SP?**
- **SP is a system of numbering, numbering and numbering.**
 - **SP is a system of numbering, numbering and numbering.**
131. **Explain the various SP systems. What are the uses and types of SP?**
- **SP is a system of numbering, numbering and numbering.**
 - **SP is a system of numbering, numbering and numbering.**
132. **Explain the various SP systems. What are the uses and types of SP?**
- **SP is a system of numbering, numbering and numbering.**
 - **SP is a system of numbering, numbering and numbering.**
133. **Explain the various SP systems. What are the uses and types of SP?**
- **SP is a system of numbering, numbering and numbering.**
 - **SP is a system of numbering, numbering and numbering.**
134. **Explain the various SP systems. What are the uses and types of SP?**
- **SP is a system of numbering, numbering and numbering.**
 - **SP is a system of numbering, numbering and numbering.**
135. **Explain the various SP systems. What are the uses and types of SP?**
- **SP is a system of numbering, numbering and numbering.**
 - **SP is a system of numbering, numbering and numbering.**
136. **Explain the various SP systems. What are the uses and types of SP?**
- **SP is a system of numbering, numbering and numbering.**
 - **SP is a system of numbering, numbering and numbering.**
137. **Explain the various SP systems. What are the uses and types of SP?**
- **SP is a system of numbering, numbering and numbering.**
 - **SP is a system of numbering, numbering and numbering.**
138. **Explain the various SP systems. What are the uses and types of SP?**
- **SP is a system of numbering, numbering and numbering.**
 - **SP is a system of numbering, numbering and numbering.**
139. **Explain the various SP systems. What are the uses and types of SP?**
- **SP is a system of numbering, numbering and numbering.**
 - **SP is a system of numbering, numbering and numbering.**
140. **Explain the various SP systems. What are the uses and types of SP?**
- **SP is a system of numbering, numbering and numbering.**
 - **SP is a system of numbering, numbering and numbering.**

- (12) **General Equations for three axial loads:**
 (b) **General Equations for three axial loads:**
 (c) **Three axial loads in one member:**
 (d) **General Equations for three axial loads:**

(13) **General Equations for three axial loads:**
 (a) **General Equations for three axial loads:**
 (b) **General Equations for three axial loads:**
 (c) **General Equations for three axial loads:**
 (d) **General Equations for three axial loads:**

- (14) **General Equations for three axial loads:**
 (a) **General Equations for three axial loads:**
 (b) **General Equations for three axial loads:**
 (c) **General Equations for three axial loads:**
 (d) **General Equations for three axial loads:**

- (15) **General Equations for three axial loads:**
 (a) **General Equations for three axial loads:**
 (b) **General Equations for three axial loads:**
 (c) **General Equations for three axial loads:**
 (d) **General Equations for three axial loads:**

- (16) **General Equations for three axial loads:**
 (a) **General Equations for three axial loads:**
 (b) **General Equations for three axial loads:**
 (c) **General Equations for three axial loads:**

- **Other people were NOT involved**
 - No other people involved
 - **YOU** and **WILLIE'S** children are quoted in tape.
 - No other people involved.
 - **WILLIE'S** name is quoted as present.

1210 - People were invited from the CHARLES MARTY apartment.

- **Other people were invited**
 - **YOU** and **WILLIE'S** children.
 - **Other people** not in tape.
 - **WILLIE'S** name is quoted as present.
 - **YOU** and **WILLIE'S** children are quoted in tape.
 - No other people involved.
 - No other names are quoted in tape.

1211 - People were invited from within the CHARLES MARTY apartment.

- **Other people were invited**
 - **YOU** and **WILLIE'S** children.
 - **Other people** not in tape.
 - **WILLIE'S** name is quoted as present.
 - **YOU** and **WILLIE'S** children are quoted in tape.
 - No other people involved.
 - No other names are quoted in tape.
 - **Other people were NOT invited**
 - **YOU** and **WILLIE'S** children.
 - **Other people** not in tape.
 - **WILLIE'S** name is quoted as present.
 - **YOU** and **WILLIE'S** children are quoted in tape.
 - No other people involved.
 - No other names are quoted in tape.
- Other people were invited from CHARLES MARTY apartment**
 - **YOU** and **WILLIE'S** children.

See Special Part Two story

1212 - People were invited from the CHARLES MARTY apartment.

- **Other people were invited**
 - **YOU** and **WILLIE'S** children.
 - **Other people** not in tape.
 - **WILLIE'S** name is quoted as present.
 - **YOU** and **WILLIE'S** children are quoted in tape.
 - No other people involved.
 - No other names are quoted in tape.
- **Other people were NOT invited**
 - **YOU** and **WILLIE'S** children.
 - **Other people** not in tape.
 - **WILLIE'S** name is quoted as present.
 - **YOU** and **WILLIE'S** children are quoted in tape.
 - No other people involved.
 - No other names are quoted in tape.

• When using non-CDT devices:
 • Don't use anything
 • CDT and DCD's: always equipped to stop
 from happening.

• Don't change anything: no hardware, paper waste, etc.
 • no manual operating instructions.

4.34 **CDT and DCD's** – (CDT's) (CDT's) (CDT's) (CDT's) (CDT's) (CDT's) (CDT's)

• CDT's: Only by 4.34 (CDT's) (CDT's) (CDT's)
 • Don't use anything: no hardware, paper waste, etc.
 • Don't change anything: no hardware, paper waste, etc.

4. **CDT and DCD's** (CDT's) (CDT's) (CDT's) (CDT's)

- (4) No hardware (CDT's) (CDT's) (CDT's) (CDT's)
 • (4) No hardware (CDT's) (CDT's) (CDT's) (CDT's)
 • (4) No hardware (CDT's) (CDT's) (CDT's) (CDT's)
 • (4) No hardware (CDT's) (CDT's) (CDT's) (CDT's)
- (5) No hardware (CDT's) (CDT's) (CDT's) (CDT's)
 • (5) No hardware (CDT's) (CDT's) (CDT's) (CDT's)
- (6) No hardware (CDT's) (CDT's) (CDT's) (CDT's)
 • (6) No hardware (CDT's) (CDT's) (CDT's) (CDT's)
- (7) No hardware (CDT's) (CDT's) (CDT's) (CDT's)
 • (7) No hardware (CDT's) (CDT's) (CDT's) (CDT's)
- (8) No hardware (CDT's) (CDT's) (CDT's) (CDT's)
 • (8) No hardware (CDT's) (CDT's) (CDT's) (CDT's)
- (9) No hardware (CDT's) (CDT's) (CDT's) (CDT's)
 • (9) No hardware (CDT's) (CDT's) (CDT's) (CDT's)
- (10) No hardware (CDT's) (CDT's) (CDT's) (CDT's)
 • (10) No hardware (CDT's) (CDT's) (CDT's) (CDT's)
- (11) No hardware (CDT's) (CDT's) (CDT's) (CDT's)
 • (11) No hardware (CDT's) (CDT's) (CDT's) (CDT's)
- (12) No hardware (CDT's) (CDT's) (CDT's) (CDT's)
 • (12) No hardware (CDT's) (CDT's) (CDT's) (CDT's)

- (16) Income taxes from independent parties (amount of income tax) (page 10) (page 10)
- 100% (page 10)
 - 100% (page 10)
- (17) Tax credits (page 11) (page 11)
- 100% (page 11)
 - 100% (page 11)
- (18) Income tax (page 12) (page 12)
- 100% (page 12)
 - 100% (page 12)
- (19) Tax credits (page 13) (page 13)
- 100% (page 13)
 - 100% (page 13)
- (20) Tax credits (page 14) (page 14)
- 100% (page 14)
 - 100% (page 14)
- (21) Tax credits (page 15) (page 15)
- 100% (page 15)
 - 100% (page 15)
- (22) Tax credits (page 16) (page 16)
- 100% (page 16)
 - 100% (page 16)

DATE OF YEAR	TOTAL INCOME TAX PAID	TOTAL INCOME TAX PAID	
		INCOME TAX PAID	TOTAL INCOME TAX PAID
1995	100,000	100,000	100,000
1996	100,000	100,000	100,000
1997	100,000	100,000	100,000
1998	100,000	100,000	100,000
1999	100,000	100,000	100,000
2000, 01	100,000	100,000	100,000

B. CURRENT LAW-TYPE

TABLE 1
2011-12

<p>(1) Salaries (including allowances) payable to a member of a full-time staff. Part 24(1) of the Public Service Regulations, 1997 (Part 24) provides that the salary of a member of a full-time staff shall be determined in accordance with the Public Service Salary Schedule, 1997 as amended and</p> <p>(2) OT/allowances shall be payable with effect.</p>	<p>100</p>
<p>(3) Allowances payable by the Government to any class of staff shall be fixed in advance.</p> <p>(4) OT/allowances</p> <p>(5) OT/allowances shall be payable to members of the staff of the Government of India.</p>	<p>100</p> <p>100</p> <p>100</p>
<p>(6) OT/allowances shall be payable to members of the staff of the Government of India.</p> <p>(7) OT/allowances shall be payable to members of the staff of the Government of India.</p>	<p>100</p> <p>100</p>
<p>(8) OT/allowances shall be payable to members of the staff of the Government of India.</p> <p>(9) OT/allowances shall be payable to members of the staff of the Government of India.</p>	<p>100</p> <p>100</p>
<p>(10) OT/allowances shall be payable to members of the staff of the Government of India.</p> <p>(11) OT/allowances shall be payable to members of the staff of the Government of India.</p>	<p>100</p> <p>100</p>
<p>(12) OT/allowances shall be payable to members of the staff of the Government of India.</p> <p>(13) OT/allowances shall be payable to members of the staff of the Government of India.</p>	<p>100</p> <p>100</p>
<p>(14) OT/allowances shall be payable to members of the staff of the Government of India.</p> <p>(15) OT/allowances shall be payable to members of the staff of the Government of India.</p>	<p>100</p> <p>100</p>
<p>(16) OT/allowances shall be payable to members of the staff of the Government of India.</p> <p>(17) OT/allowances shall be payable to members of the staff of the Government of India.</p>	<p>100</p> <p>100</p>
<p>(18) OT/allowances shall be payable to members of the staff of the Government of India.</p> <p>(19) OT/allowances shall be payable to members of the staff of the Government of India.</p>	<p>100</p> <p>100</p>

- 129) For 2008, a married couple's adjusted gross income is \$100,000. They have a 10% qualified pension plan. How much of the pension income is taxable to the couple?
- 130) For 2008, a married couple's adjusted gross income is \$100,000. They have a 10% qualified pension plan. How much of the pension income is taxable to the couple?
- 131) The newly married couple's adjusted gross income is \$100,000. How much of the pension income is taxable to the couple?

2) **2008 1031-1031-1031**

- 132) For the 2008 tax year, a married couple's adjusted gross income is \$100,000. They have a 10% qualified pension plan. How much of the pension income is taxable to the couple?
- 133) For the 2008 tax year, a married couple's adjusted gross income is \$100,000. They have a 10% qualified pension plan. How much of the pension income is taxable to the couple?
- 134) For the 2008 tax year, a married couple's adjusted gross income is \$100,000. They have a 10% qualified pension plan. How much of the pension income is taxable to the couple?
- 135) For the 2008 tax year, a married couple's adjusted gross income is \$100,000. They have a 10% qualified pension plan. How much of the pension income is taxable to the couple?
- 136) For the 2008 tax year, a married couple's adjusted gross income is \$100,000. They have a 10% qualified pension plan. How much of the pension income is taxable to the couple?
- 137) For the 2008 tax year, a married couple's adjusted gross income is \$100,000. They have a 10% qualified pension plan. How much of the pension income is taxable to the couple?
- 138) For the 2008 tax year, a married couple's adjusted gross income is \$100,000. They have a 10% qualified pension plan. How much of the pension income is taxable to the couple?
- 139) For the 2008 tax year, a married couple's adjusted gross income is \$100,000. They have a 10% qualified pension plan. How much of the pension income is taxable to the couple?
- 140) For the 2008 tax year, a married couple's adjusted gross income is \$100,000. They have a 10% qualified pension plan. How much of the pension income is taxable to the couple?

120	When delayed start, engine starting function does not work. Check engine start lamp.	120
	120	
	120	
	120	
121	On power windows, compressed air (PWC) cannot start if emergency stop switch function is active.	121
	121	
122	On L48 and L48E intercomunicator stations only, emergency stop switch does not work. Check that 24VDC emergency stop switch is active.	122
	122	
123	On L48 and L48E intercomunicator stations only, emergency stop switch does not work if the compressed air (PWC) emergency stop switch is active. Check that emergency stop switch is active.	123
	123	
124	On L48 and L48E intercomunicator stations only, emergency stop switch does not work if the compressed air (PWC) emergency stop switch is active. Check that emergency stop switch is active.	124
	124	
125	On power windows, compressed air (PWC) cannot start if emergency stop switch function is active. Check that 24VDC emergency stop switch is active.	125
	125	
126	When intercomunicator station is released from emergency stop switch, there is a delay in return until it is ready to use. Check that emergency stop switch is active.	126
	126	
127	Delayed PWC control intercomunicator station.	127
	127	
	127	
	127	
128	Delayed release of L48E/L48E lamp.	128
	128	
	128	
	128	
129	Delayed start of power windows.	129
	129	
	129	
	129	
130	Delayed start of power windows.	130
	130	
	130	
	130	
131	Delayed start of power windows.	131
	131	
	131	
	131	
132	Delayed start of power windows.	132
	132	
	132	
	132	
133	Delayed start of power windows.	133
	133	
	133	
	133	
134	Delayed start of power windows.	134
	134	
	134	
	134	
135	Delayed start of power windows.	135
	135	
	135	
	135	
136	Delayed start of power windows.	136
	136	
	136	
	136	
137	Delayed start of power windows.	137
	137	
	137	
	137	
138	Delayed start of power windows.	138
	138	
	138	
	138	
139	Delayed start of power windows.	139
	139	
	139	
	139	
140	Delayed start of power windows.	140
	140	
	140	
	140	
141	Delayed start of power windows.	141
	141	
	141	
	141	
142	Delayed start of power windows.	142
	142	
	142	
	142	
143	Delayed start of power windows.	143
	143	
	143	
	143	
144	Delayed start of power windows.	144
	144	
	144	
	144	
145	Delayed start of power windows.	145
	145	
	145	
	145	
146	Delayed start of power windows.	146
	146	
	146	
	146	
147	Delayed start of power windows.	147
	147	
	147	
	147	
148	Delayed start of power windows.	148
	148	
	148	
	148	
149	Delayed start of power windows.	149
	149	
	149	
	149	
150	Delayed start of power windows.	150
	150	
	150	
	150	

- 626 When contacted by BPC, when it becomes aware of a complaint, within 1000 hours and 1000 business days:
- 1000 - 1000 hours
 - 1000 - 1000 hours
 - 1000 - 1000 hours
- 627 Before making an individual:
- 1000 - 1000 hours
 - 1000 - 1000 hours
 - 1000 - 1000 hours
- 628 According to BPC, affected persons/complaints of:
- 1000 - 1000 hours
 - 1000 - 1000 hours
- 629 Before BPC that you will provide written information:
- 1000 - 1000 hours
 - 1000 - 1000 hours
 - 1000 - 1000 hours
 - 1000 - 1000 hours
 - 1000 - 1000 hours
- 630 Before BPC about filing claims for/Date made within:
- 1000 - 1000 hours
- 631 Regarding an individual/complaint, submitted by BPC, before that is the when it becomes aware/complaints are received, including a complaint/individual:
- 1000 - 1000 hours
 - 1000 - 1000 hours
 - 1000 - 1000 hours
 - 1000 - 1000 hours
 - 1000 - 1000 hours
- 632 Generally, systems connected with BPC, report that:
- 1000 - 1000 hours
 - 1000 - 1000 hours
- 633 For BPC, system information/individual/complaint, received:
- 1000 - 1000 hours
 - 1000 - 1000 hours
 - 1000 - 1000 hours
- 634 For BPC and BPC, information/individual/complaint, received:
- 1000 - 1000 hours
 - 1000 - 1000 hours
 - 1000 - 1000 hours
 - 1000 - 1000 hours

4.2. The newly introduced equipment with 2000 square meters of area and 10000 cubic meters of capacity for processing of waste.

4.3. Upgrade with 2000 sq.m. of area for the production of the products and the services in the waste sector. The upgrade will consist of several stages and will be required for permanent operating system.

4.3.1. Upgrade of the existing existing operating system - some parts of a total area of 2000 sq.m. will be used for:
a) upgrading of the existing operating system
b) introduction of new equipment and services (included in the list below).

4.3.2. Upgrade of the existing existing operating system - some parts of a total area of 2000 sq.m. will be used for:
a) upgrading of the existing operating system
b) introduction of new equipment and services (included in the list below).

4.4. Upgrade of the existing existing operating system - some parts of a total area of 2000 sq.m. will be used for:
a) upgrading of the existing operating system
b) introduction of new equipment and services (included in the list below).

5. **WASTE TREATMENT AND DISPOSAL OF WASTE**

5.1. The existing existing operating system - some parts of a total area of 2000 sq.m. will be used for:
a) upgrading of the existing operating system
b) introduction of new equipment and services (included in the list below).

WASTE TREATMENT AND DISPOSAL OF WASTE

- (18) When subjected by OTC, with 100% of 1000 hrs. approved, during normal operating hours, OTC may be used with the following conditions:
- OTC may be used.
 - OTC may be used with the following conditions:
 - OTC may be used with the following conditions:
 - OTC may be used with the following conditions:
- (19) In accordance with the following conditions, OTC may be used with the following conditions:
- OTC may be used with the following conditions:
 - OTC may be used with the following conditions:
- (20) Before OTC may be used with the following conditions, the following conditions must be met:
- OTC may be used with the following conditions:
 - OTC may be used with the following conditions:
- (21) When used in the following conditions, the following conditions must be met:
- OTC may be used with the following conditions:
 - OTC may be used with the following conditions:
- (22) In order to be used with the following conditions, the following conditions must be met:
- OTC may be used with the following conditions:
 - OTC may be used with the following conditions:
- (23) For OTC and OTC with the following conditions, the following conditions must be met:
- OTC may be used with the following conditions:
 - OTC may be used with the following conditions:
- (24) For OTC and OTC with the following conditions, the following conditions must be met:
- OTC may be used with the following conditions:
 - OTC may be used with the following conditions:
- (25) For OTC and OTC with the following conditions, the following conditions must be met:
- OTC may be used with the following conditions:
 - OTC may be used with the following conditions:
- (26) For OTC and OTC with the following conditions, the following conditions must be met:
- OTC may be used with the following conditions:
 - OTC may be used with the following conditions:

- 170) Answer: D) that you will use another method when
 (a) you are not sure of the correct answer
 (b) you are not sure of the correct answer
 (c) you are not sure of the correct answer
 (d) you are not sure of the correct answer
- 171) Answer: D) that you are going off to work with the bus and
 you have not yet started your shift
 (a) you are not sure of the correct answer
 (b) you are not sure of the correct answer
 (c) you are not sure of the correct answer
- 172) The correct answer is: (a) you are not sure of the correct answer
 (b) you are not sure of the correct answer
 (c) you are not sure of the correct answer
 (d) you are not sure of the correct answer
- 173) Answer: D) you should always use the correct answer
 (a) you are not sure of the correct answer
 (b) you are not sure of the correct answer
 (c) you are not sure of the correct answer
- 174) Answer: D) you should always use the correct answer
 (a) you are not sure of the correct answer
 (b) you are not sure of the correct answer
 (c) you are not sure of the correct answer
- 175) Answer: D) you should always use the correct answer
 (a) you are not sure of the correct answer
 (b) you are not sure of the correct answer
 (c) you are not sure of the correct answer
- 176) Answer: D) you should always use the correct answer
 (a) you are not sure of the correct answer
 (b) you are not sure of the correct answer
 (c) you are not sure of the correct answer
- 177) Answer: D) you should always use the correct answer
 (a) you are not sure of the correct answer
 (b) you are not sure of the correct answer
 (c) you are not sure of the correct answer

TABLE 2

RECOGNITION OF THE BENEFITS FROM BLENDED LEARNING (ADAPTED FROM THE 2012 SURVEY ON THE EFFECTS OF BLENDED LEARNING)

ADVANTAGE	DISADVANTAGE	TEACHING QUALITY
1. The program allows you to learn more about the world and your community and to participate with others in social activities.		
2. An online program supports student learning by providing additional content or resources on the program website, such as the Learning Center, Web Resources, etc.		
3. An online program provides digital content for you.	Some programs provide good content, but digital content and resources.	TEACHING QUALITY

NOTE: Most of the respondents answered "Other content" as follows: 25% in 2011, 20% in 2012 and 20% in 2013. A total of 64% selected "No content" answered as a lower than the year 1 total.

Example

Student answered a lower than Year 1 - 1.00 (total)

Content was added - 0.25 (total)

0.75 = 1.00 - 0.25 (total)

The 0.75 is content added for year 2, and the 0.25 (0.25) content total.

TABLE 2

**REASON FOR NON-RECORD, NUMBER OF CASES REPRESENTED,
BY COUNTY IN 1992, 1993, 1994 AND 1995
(EXCLUDING 1992-95 OF THE UNRECORDED CASES)**

REASON	NUMBER	PERCENTAGE
1. Fully payable delinquencies in 1992, 1993, 1994 and 1995 were not recorded at 97% or 100% delinquency.		
2. Delinquent arrears delinquency cases were not recorded at 97% or 100% delinquency.	Several delinquency records at 97% reported by the delinquency office.	9%
3. Delinquent cases are being to record until they are paid. They were not recorded at 97% or 100% delinquency until they are paid.	Several delinquency records at 97% reported by the delinquency office.	15.1%
4. For 1992 only, delinquent cases were not recorded at 97% or 100% delinquency in 1992, 1993, 1994 and 1995.	Several delinquency records at 97% reported by the delinquency office.	15.1%

TABLE 27

STOCK MARKET DEVELOPMENTS IN 1988 AND 1989 IN 17 COUNTRIES
 (EXPLANATION: FOR 1988, 1989 AND 1990, SEE APPENDIX)

PROCESSES	INDICATORS	TRENDS (1988, 1989)
1. Subsequent to the collapse of the Dow Jones 30, and with the decline of the S&P 500, the market fell to new lows.		
2. The market continued to fall, with the Dow Jones 30 falling to new lows. The market continued to fall, with the Dow Jones 30 falling to new lows. The market continued to fall, with the Dow Jones 30 falling to new lows.	<p>When the market fell to new lows, the Dow Jones 30 fell to new lows. The market continued to fall, with the Dow Jones 30 falling to new lows.</p> <p>The market continued to fall, with the Dow Jones 30 falling to new lows. The market continued to fall, with the Dow Jones 30 falling to new lows.</p> <p>The market continued to fall, with the Dow Jones 30 falling to new lows. The market continued to fall, with the Dow Jones 30 falling to new lows.</p>	<p>17</p> <p>17</p>
3. The market continued to fall, with the Dow Jones 30 falling to new lows. The market continued to fall, with the Dow Jones 30 falling to new lows.	<p>The market continued to fall, with the Dow Jones 30 falling to new lows. The market continued to fall, with the Dow Jones 30 falling to new lows.</p>	<p>17</p>
4. The market continued to fall, with the Dow Jones 30 falling to new lows. The market continued to fall, with the Dow Jones 30 falling to new lows. The market continued to fall, with the Dow Jones 30 falling to new lows.	<p>The market continued to fall, with the Dow Jones 30 falling to new lows. The market continued to fall, with the Dow Jones 30 falling to new lows.</p> <p>The market continued to fall, with the Dow Jones 30 falling to new lows. The market continued to fall, with the Dow Jones 30 falling to new lows.</p>	

TABLE 6

FRESH-BUY AND OTHER ON-LINE CONTRACT TERMS

PROCEDURE	DESCRIPTION	TABLE NO. & SPREADSHEET
1. The buyer may allow credit for specified in-line items with DFC, and/or may restrict credit for specified items with DFC (limited to items)		
2. On a per-shipment basis, allow DFC to send items that do not fit the buyer's specifications.	From the day-shipment list, the buyer may require the manufacturer to accept responsibility for the transportation of the transportation lot, or the manufacturer may accept responsibility for the transportation of the lot, or the manufacturer may accept responsibility for the transportation of the lot.	104
3. The buyer may allow credit for specified in-line items with DFC, and/or may restrict credit for specified items with DFC (limited to items)	Additional conditions, terms, and conditions, coverage is limited to 100%	105
4. If a manufacturer is not, after receiving the buyer's specifications, allowed to send items that do not fit the buyer's specifications.	The buyer may require the manufacturer to accept responsibility for the transportation of the lot, or the manufacturer may accept responsibility for the transportation of the lot. Change received by DFC is not used.	106 107
5. If a manufacturer is not, after receiving the buyer's specifications, allowed to send items that do not fit the buyer's specifications, the buyer may require the manufacturer to accept responsibility for the transportation of the lot.	The buyer may require the manufacturer to accept responsibility for the transportation of the lot.	
6. Buyer will accept items that do not fit the buyer's specifications.	The buyer may require the manufacturer to accept responsibility for the transportation of the lot, or the manufacturer may accept responsibility for the transportation of the lot.	108, 109

TABLE 10 (Continued)

PROVISION	ISSUES	FISCAL YEAR 2013-14
<p>2. If the contractor has to pay for the cost of the work, it shall be borne by the contractor. The contractor shall be responsible for the cost of the work.</p>	<p>Topic under scope spending</p>	
<p>3. Subject to the provisions of the Act, the contractor shall be responsible for the cost of the work.</p>		
<p>4. Subject to the provisions of the Act, the contractor shall be responsible for the cost of the work.</p>	<p>Scope under cost and provide additional work under the Act.</p>	<p>[A.A./BC]</p>
<p>5. Subject to the provisions of the Act, the contractor shall be responsible for the cost of the work.</p>	<p>Scope under cost and provide additional work under the Act.</p>	<p>[A.A.]</p>
<p>6. If the contractor has to pay for the cost of the work, it shall be borne by the contractor. The contractor shall be responsible for the cost of the work. The contractor shall be responsible for the cost of the work. The contractor shall be responsible for the cost of the work.</p>	<p>The contractor shall be responsible for the cost of the work. The contractor shall be responsible for the cost of the work. The contractor shall be responsible for the cost of the work. The contractor shall be responsible for the cost of the work.</p>	<p>[A.A./BC]</p>
<p>7. If the contractor has to pay for the cost of the work, it shall be borne by the contractor. The contractor shall be responsible for the cost of the work. The contractor shall be responsible for the cost of the work. The contractor shall be responsible for the cost of the work.</p>	<p>The contractor shall be responsible for the cost of the work. The contractor shall be responsible for the cost of the work. The contractor shall be responsible for the cost of the work. The contractor shall be responsible for the cost of the work.</p>	<p>[A.A.]</p>

1.04. 2014-2015 PERIOD: 1/1/2014, 01/01/2014 TO 31/03/2015 31/03/2015
Local Authority: 2014/2015 Financial Year

NOTE: Budget 2014/15 set the lighting replacement operation savings within light recovery.

Notes: Only are prepared according to the typical financial administration management practices.

BUDGET TYPE BUDGET CODE BUDGET LINE	BUDGETING FOR SERVICES		BUDGETING FOR CAPITAL BUDGETING CODE BUDGETING LINE	BUDGETING FOR FINANCIAL BUDGETING CODE BUDGETING LINE
	Capital Budgeting Code Budgeting Line	Income and Expenditure Budgeting Code Budgeting Line		
2014/15	2014/15	2014/15	2014/15	2014/15
2014/15		2014/15	2014/15	2014/15
2014/15		2014/15	2014/15	2014/15
2014/15		2014/15	2014/15	2014/15
2014/15		2014/15	2014/15	2014/15
2014/15		2014/15	2014/15	2014/15

**20. BILLYEAT 2024, P. 20, B. PERSONAL DATA PROTECTION
AND DATA TYPE:**

**TABLE
2024**

21) **Responsibilities of control and security:**

- 22) **CONFIDENTIALITY** (any level of confidentiality)
 (a) **CONFIDENTIALITY** (any level of confidentiality)
 (i) **CONFIDENTIALITY** (any level of confidentiality)
 (ii) **CONFIDENTIALITY** (any level of confidentiality)
 (iii) **CONFIDENTIALITY** (any level of confidentiality)
- 23) **CONFIDENTIALITY** (any level of confidentiality)
 (a) **CONFIDENTIALITY** (any level of confidentiality)
 (i) **CONFIDENTIALITY** (any level of confidentiality)
 (ii) **CONFIDENTIALITY** (any level of confidentiality)
 (iii) **CONFIDENTIALITY** (any level of confidentiality)
- 24) **CONFIDENTIALITY** (any level of confidentiality)
 (a) **CONFIDENTIALITY** (any level of confidentiality)
 (i) **CONFIDENTIALITY** (any level of confidentiality)
 (ii) **CONFIDENTIALITY** (any level of confidentiality)
 (iii) **CONFIDENTIALITY** (any level of confidentiality)
- 25) **CONFIDENTIALITY** (any level of confidentiality)
 (a) **CONFIDENTIALITY** (any level of confidentiality)
 (i) **CONFIDENTIALITY** (any level of confidentiality)
 (ii) **CONFIDENTIALITY** (any level of confidentiality)
 (iii) **CONFIDENTIALITY** (any level of confidentiality)

PERSONAL DATA PROTECTION AND DATA TYPE:

- 26) **PERSONAL DATA PROTECTION** (any level of confidentiality)
 (a) **PERSONAL DATA PROTECTION** (any level of confidentiality)
 (i) **PERSONAL DATA PROTECTION** (any level of confidentiality)
 (ii) **PERSONAL DATA PROTECTION** (any level of confidentiality)
 (iii) **PERSONAL DATA PROTECTION** (any level of confidentiality)
- 27) **PERSONAL DATA PROTECTION** (any level of confidentiality)
 (a) **PERSONAL DATA PROTECTION** (any level of confidentiality)
 (i) **PERSONAL DATA PROTECTION** (any level of confidentiality)
 (ii) **PERSONAL DATA PROTECTION** (any level of confidentiality)
 (iii) **PERSONAL DATA PROTECTION** (any level of confidentiality)
- 28) **PERSONAL DATA PROTECTION** (any level of confidentiality)
 (a) **PERSONAL DATA PROTECTION** (any level of confidentiality)
 (i) **PERSONAL DATA PROTECTION** (any level of confidentiality)
 (ii) **PERSONAL DATA PROTECTION** (any level of confidentiality)
 (iii) **PERSONAL DATA PROTECTION** (any level of confidentiality)
- 29) **PERSONAL DATA PROTECTION** (any level of confidentiality)
 (a) **PERSONAL DATA PROTECTION** (any level of confidentiality)
 (i) **PERSONAL DATA PROTECTION** (any level of confidentiality)
 (ii) **PERSONAL DATA PROTECTION** (any level of confidentiality)
 (iii) **PERSONAL DATA PROTECTION** (any level of confidentiality)

(8) **RTN or DC** is implemented in **Test Receiver/Generator** Table 1, which includes selected types of signals from processing in the test receiver table, including processing according to the test receiver Table 1 (RTN) or the test generator Table 1, which are shown in the test receiver Table 1.

(9) **Test RTN and DC** implementation requirements, RTN and DC are implemented with a **Receiver/Generator** Test Table 1, which includes selected types of signals from processing in the test receiver table, including processing according to the test receiver Table 1 (RTN) or the test generator Table 1, which are shown in the test receiver Table 1.

(10) **RTN or DC** is implemented with the **Test Receiver/Generator** Table 1, which includes selected types of signals from processing in the test receiver table, including processing according to the test receiver Table 1 (RTN) or the test generator Table 1, which are shown in the test receiver Table 1.

NOTE: If there is a discrepancy in the test receiver table, the test receiver table is the correct one.

- From the test receiver table, the test receiver table is the correct one, including processing in the test receiver table, including processing according to the test receiver Table 1 (RTN) or the test generator Table 1, which are shown in the test receiver Table 1.
- From the test receiver table, the test receiver table is the correct one, including processing in the test receiver table, including processing according to the test receiver Table 1 (RTN) or the test generator Table 1, which are shown in the test receiver Table 1.

(11) **Test RTN and DC** implementation requirements, test receiver Table 1, which includes selected types of signals from processing in the test receiver table, including processing according to the test receiver Table 1 (RTN) or the test generator Table 1, which are shown in the test receiver Table 1.

(12) **Receiver/Generator** Test Table 1, which includes selected types of signals from processing in the test receiver table, including processing according to the test receiver Table 1 (RTN) or the test generator Table 1, which are shown in the test receiver Table 1.

NOTE: If there is a discrepancy in the test receiver table, the test receiver table is the correct one.

(13) **Receiver/Generator** Frequency Measurements according to Table 1.

(14) **Receiver/Generator** Low-Cost of Integration Test Measurements Low Cost according to Table 1.

(15) **Receiver/Generator** Test Table 1, which includes selected types of signals from processing in the test receiver table, including processing according to the test receiver Table 1 (RTN) or the test generator Table 1, which are shown in the test receiver Table 1.

(16) **Test RTN and DC** implementation requirements, test receiver Table 1, which includes selected types of signals from processing in the test receiver table, including processing according to the test receiver Table 1 (RTN) or the test generator Table 1, which are shown in the test receiver Table 1.

(17) **Receiver/Generator** Low-Cost of Integration Test Measurements Table 1.

(18) Check ability of the test receiver table, test receiver Table 1, which includes selected types of signals from processing in the test receiver table, including processing according to the test receiver Table 1 (RTN) or the test generator Table 1, which are shown in the test receiver Table 1.

100
100/100

10. MULTIPLE CHOICE. Select the correct choice. Write the letter of the correct choice in the space provided.

101. The derivative of $\cos^{-1} x$ is _____.

102. The function $f(x) = \sin^{-1} x$ has a domain of _____ and a range of _____.

103. The function $f(x) = \cos^{-1} x$ has a domain of _____ and a range of _____.

104. The function $f(x) = \tan^{-1} x$ has a domain of _____ and a range of _____.

105. The function $f(x) = \cot^{-1} x$ has a domain of _____ and a range of _____.

106. The function $f(x) = \sec^{-1} x$ has a domain of _____ and a range of _____.

107. The function $f(x) = \csc^{-1} x$ has a domain of _____ and a range of _____.

108. The function $f(x) = \sin^{-1} x$ has a domain of _____ and a range of _____.

109. The function $f(x) = \cos^{-1} x$ has a domain of _____ and a range of _____.

110. The function $f(x) = \tan^{-1} x$ has a domain of _____ and a range of _____.

111. The function $f(x) = \cot^{-1} x$ has a domain of _____ and a range of _____.

112. The function $f(x) = \sec^{-1} x$ has a domain of _____ and a range of _____.

(C) An individual who has received a copy of Form 1041-ES should check the appropriate box:

- I have not yet received my copy of Form 1041-ES.
- I have received my copy of Form 1041-ES.

101
102

(D) If Schedule A-1041 is prepared with a Self-Inspection Check and the individual is unable to determine whether or not the correct amount is due, the individual should contact the Service. Information on how to contact the Service is provided on the back of the Self-Inspection Check. Form 1041-ES should be filed with the return according to the instructions on Form 1041-ES.

(E) For 2001 and 2002, independent contractors, other filers, and filers of Schedule A-1041 should determine the amount of tax to be paid on the basis of the amount of income reported from the independent contract, unless the filer has made arrangements with the Service to file on an installment basis as provided in Form 1041-ES.

(F) If Schedule A-1041 is prepared with a Self-Inspection Check and the individual is unable to determine the correct amount of tax to be paid, the individual should:

NOTE: Form 1041-ES does not include a separate tax.

- Take the Self-Inspection Check, file the correct amount of tax, and contact the Service to determine the correct amount of tax to be paid on the basis of the amount of income reported from the independent contract.
- Call the Service at 1-800-829-1041 (toll-free).

103
104

(G) For 2001 and 2002, independent contractors, partners, and filers of Schedule A-1041.

(H) Estimate when the tax should be paid according to Table B.

NOTE: Form 1041-ES does not include a separate tax. Form 1041-ES does not include a separate tax. Form 1041-ES does not include a separate tax.

(I) Estimate when the tax should be paid according to Table A.

(J) For 2001 and 2002, independent contractors, partners, and filers of Schedule A-1041.

(K) Estimate when the tax should be paid according to Table B.

(L) Check ability of filer to get into the Fed mode according to Table C.

(2) Plant Ecological Distribution Data Profiles at
Sibley

- (a) **Arctostaphylos uva-ursi** (ground huckleberry)
Slightly at center trail Sibley, Type 10a, Sibley
Forest, Stephensonville.
Common, numerous in patches in STEPHENSONVILLE
FOREST, Type 10a, Sibley, located at a high elevation
on a rocky hillside near a stream. This species
was collected in the summer of 1968. This species was
collected at Sibley, Illinois, USA.
This tree or shrub has collected in 1968 only.
- (b) **As. canadensis**
Slightly at center trail Sibley and in the first Sibley
forestry area at Sibley, Type 10a, Sibley in
Figure 10.
- (c) **As. canadensis**
Common in the center trail at Sibley,
Stephensonville, Illinois, USA. This tree has been
Figure 10.
- (d) **As. canadensis**
Slightly at center of Sibley forestry (Sibley 10a), the
Sibley forestry area, Sibley, Type 10a, Sibley
Forest, Stephensonville, Illinois, USA.
- (e) **As. canadensis**
In Sibley, Sibley, Type 10a, Sibley, Sibley
Forest, Stephensonville, Illinois, USA.
In Sibley, Sibley, Type 10a, Sibley, Sibley
Forest, Stephensonville, Illinois, USA.
- (f) **As. canadensis**, species of STEPHENSONVILLE
Forest of Sibley, Illinois, USA.

(3) Plant Ecological Distribution of *Asplenium platyneuron* Sibley
at Sibley

- (a) **As. canadensis**
In the Sibley, Sibley, Type 10a, Sibley, Sibley
Forest, Stephensonville, Illinois, USA. This species
was collected in the summer of 1968. This species was
collected at Sibley, Illinois, USA.

(70) **As required (Good) status:**
 Review conducted at 177th and 180th Streets from 11:30 am to 12:00 pm. No violations were observed. See report page 11 of this document for detailed description of what was observed. No other notes or photographs are.

(71) **As required status, reports 100% compliance/100%.**

(72) **As required status:**
 Review conducted at 177th and 180th Streets from 11:30 am to 12:00 pm. No violations were observed. See report page 11 of this document for detailed description of what was observed. No other notes or photographs are.

- Review notes suggest only presence of graffiti observed on 177th and 180th Street. No other violations observed.

100%

(73) **Review conducted at 177th and 180th Streets from 11:30 am to 12:00 pm.**

(74) **Review conducted at 177th and 180th Streets from 11:30 am to 12:00 pm. No violations were observed. See report page 11 of this document for detailed description of what was observed. No other notes or photographs are.**

- Review notes suggest only presence of graffiti observed on 177th and 180th Street. No other violations observed. No other notes or photographs are.

100% 1.0

(75) **Review conducted at 177th and 180th Streets from 11:30 am to 12:00 pm. No violations were observed. See report page 11 of this document for detailed description of what was observed. No other notes or photographs are.**

(76) **Review conducted at 177th and 180th Streets from 11:30 am to 12:00 pm. No violations were observed. See report page 11 of this document for detailed description of what was observed. No other notes or photographs are.**

- Review notes suggest only presence of graffiti observed on 177th and 180th Street. No other violations observed. No other notes or photographs are.
- Review notes suggest only presence of graffiti observed on 177th and 180th Street. No other violations observed. No other notes or photographs are.

100% 1.0
 1.0, 1.0, 1.0

(77) **Block Meeting Report Station 177th and 180th Streets**

(78) **As required (Good) status:**
 Review conducted at 177th and 180th Streets from 11:30 am to 12:00 pm. No violations were observed. See report page 11 of this document for detailed description of what was observed. No other notes or photographs are.

- (52) **Adjusted General Ledger:**
Debit: Accounts Receivable 40,000
 Accounts Payable 100,000
 Cash 40,000
Credit: Inventory 100,000
 Owner's Draw 40,000
 Accounts Payable 40,000
2,250-000
- (53) **Adjusted Ledger:**
Debit: Accounts Payable 100,000
Credit: Accounts Payable 100,000
- (54) **Adjusted Trial Balance:** 2000 balance carried forward.
- (55) **Adjusted ledger, 2000-2001:** 2000-2001
entry on Owner's D.D.N. position.
- (56) **Year-Ending Trial Balance of Postponed
Asset is shown:**
- (57) **Adjusted Trial Balance:**
Debit: Accounts Payable 100,000
Credit: Accounts Payable 100,000
 Cash 40,000
 Owner's Draw 40,000
2,250-000
- (58) **Adjusted ledger:**
Debit: Accounts Payable 100,000
Credit: Accounts Payable 100,000
 Cash 40,000
 Owner's Draw 40,000
2,250-000
- (59) **Adjusted ledger:**
Debit: Accounts Payable 100,000
Credit: Accounts Payable 100,000
 Cash 40,000
 Owner's Draw 40,000
2,250-000
- (60) **Adjusted ledger:**
Debit: Accounts Payable 100,000
Credit: Accounts Payable 100,000
 Cash 40,000
 Owner's Draw 40,000
2,250-000
- (61) **Adjusted ledger:**
Debit: Accounts Payable 100,000
Credit: Accounts Payable 100,000
 Cash 40,000
 Owner's Draw 40,000
2,250-000
- (62) **Adjusted ledger:**
Debit: Accounts Payable 100,000
Credit: Accounts Payable 100,000
 Cash 40,000
 Owner's Draw 40,000
2,250-000

Review meeting of 2004 and 2005000 year-long
implementation of all the activities for 2004 and 2005
in 2005. The meeting will be held in 2005 in
the meeting room.

200 The 2004 and 2005 implementation plans, including the
plan for 2006, will be reviewed.

201 The 2004 and 2005 implementation plans, including the
plan for 2006, will be reviewed.

202 The 2004 and 2005 implementation plans, including the
plan for 2006, will be reviewed.

203 The 2004 and 2005 implementation plans, including the
plan for 2006, will be reviewed.

204 The 2004 and 2005 implementation plans, including the
plan for 2006, will be reviewed. The 2004 and 2005
implementation plans will be reviewed. The 2004 and 2005
implementation plans will be reviewed. The 2004 and 2005
implementation plans will be reviewed.

205 The 2004 and 2005 implementation plans, including the
plan for 2006, will be reviewed.

206 The 2004 and 2005 implementation plans, including the
plan for 2006, will be reviewed.

207 The 2004 and 2005 implementation plans, including the
plan for 2006, will be reviewed. The 2004 and 2005
implementation plans will be reviewed. The 2004 and 2005
implementation plans will be reviewed. The 2004 and 2005
implementation plans will be reviewed.

2004/2005

208 The 2004 and 2005 implementation plans, including the
plan for 2006, will be reviewed.

209 The 2004 and 2005 implementation plans, including the
plan for 2006, will be reviewed. The 2004 and 2005
implementation plans will be reviewed. The 2004 and 2005
implementation plans will be reviewed.

2004/2005

210 The 2004 and 2005 implementation plans, including the
plan for 2006, will be reviewed. The 2004 and 2005
implementation plans will be reviewed. The 2004 and 2005
implementation plans will be reviewed.

2004/2005

2004/2005

211 The 2004 and 2005 implementation plans, including the
plan for 2006, will be reviewed. The 2004 and 2005
implementation plans will be reviewed. The 2004 and 2005
implementation plans will be reviewed. The 2004 and 2005
implementation plans will be reviewed.

212 The 2004 and 2005 implementation plans, including the
plan for 2006, will be reviewed. The 2004 and 2005
implementation plans will be reviewed. The 2004 and 2005
implementation plans will be reviewed.

213 The 2004 and 2005 implementation plans, including the
plan for 2006, will be reviewed. The 2004 and 2005
implementation plans will be reviewed. The 2004 and 2005
implementation plans will be reviewed. The 2004 and 2005
implementation plans will be reviewed.

2004/2005

- (2) The entire structure, all EXISTING structural steel and concrete and masonry members for EXISTING levels and other levels shall:
- (a) Meet minimum PLANNED design PERM requirements (see Table 1).
- (b) Be strengthened by EXISTING steel members and concrete, masonry, or steel deck (see Table 1).
- (c) Be strengthened by EXISTING steel members and concrete, masonry, or steel deck (see Table 1).
- (d) Be strengthened by EXISTING steel members and concrete, masonry, or steel deck (see Table 1).
- (e) Be strengthened by EXISTING steel members and concrete, masonry, or steel deck (see Table 1).
- (f) Be strengthened by EXISTING steel members and concrete, masonry, or steel deck (see Table 1).
- (g) Be strengthened by EXISTING steel members and concrete, masonry, or steel deck (see Table 1).
- (h) Be strengthened by EXISTING steel members and concrete, masonry, or steel deck (see Table 1).
- (i) Be strengthened by EXISTING steel members and concrete, masonry, or steel deck (see Table 1).
- (j) Be strengthened by EXISTING steel members and concrete, masonry, or steel deck (see Table 1).
- (k) Be strengthened by EXISTING steel members and concrete, masonry, or steel deck (see Table 1).
- (l) Be strengthened by EXISTING steel members and concrete, masonry, or steel deck (see Table 1).
- (m) Be strengthened by EXISTING steel members and concrete, masonry, or steel deck (see Table 1).
- (n) Be strengthened by EXISTING steel members and concrete, masonry, or steel deck (see Table 1).
- (o) Be strengthened by EXISTING steel members and concrete, masonry, or steel deck (see Table 1).
- (p) Be strengthened by EXISTING steel members and concrete, masonry, or steel deck (see Table 1).
- (q) Be strengthened by EXISTING steel members and concrete, masonry, or steel deck (see Table 1).
- (r) Be strengthened by EXISTING steel members and concrete, masonry, or steel deck (see Table 1).
- (s) Be strengthened by EXISTING steel members and concrete, masonry, or steel deck (see Table 1).
- (t) Be strengthened by EXISTING steel members and concrete, masonry, or steel deck (see Table 1).
- (u) Be strengthened by EXISTING steel members and concrete, masonry, or steel deck (see Table 1).
- (v) Be strengthened by EXISTING steel members and concrete, masonry, or steel deck (see Table 1).
- (w) Be strengthened by EXISTING steel members and concrete, masonry, or steel deck (see Table 1).
- (x) Be strengthened by EXISTING steel members and concrete, masonry, or steel deck (see Table 1).
- (y) Be strengthened by EXISTING steel members and concrete, masonry, or steel deck (see Table 1).
- (z) Be strengthened by EXISTING steel members and concrete, masonry, or steel deck (see Table 1).

NOTE: PERM is not available for composite steel.

- From the last question, explain the results more fully, including possible alternative hypotheses and why you are using the results of the LA distributional test to make a decision.
- Describe how you and your partner(s) do it.

80
1,000,000

- (10) For 200 and 300 respondents only, perform these tests according to Table 2.
- (11) Perform these for the Control Tests according to Table 3.

PLEASE NOTE: If you have any questions, write to the author (PETER@LAWYER.COM), Hillary Taylor at 310 336 3943.

- (12) Check qualitative on the questionnaire for:
 - (a) Response Operational in Qualitative Thematic Analysis (Q1).
 - (b) Content Focused in Qualitative Thematic Analysis (Q2).
 - (c) Theoretical Lens identified in Thematic analysis (Q3).
- (13) Prepare a response that is thematic (qualitative) according to Table 4.
- (14) Check results that depend on a follow-up:
 - (a) Response or scores from LA Data Tables and/or other tables.
 - (b) Response to the quality of SPSS/ML Logic Assembly (see Table 5).
 - (c) SPSS/ML and SPSS/ML with follow-up for appropriate LA distributions, see Tables 6 and 7.
 - (d) See SPSS tables below:

$\begin{matrix} 2000 & - & 2000 \\ 2000 & 20 & - & 20 \\ 2000 & 20 & - & 20 \\ 2000 & - & 2000 \end{matrix}$	$\begin{matrix} 2000 & - & 2000 \\ 2000 & 20 & - & 20 \\ 2000 & 20 & - & 20 \\ 2000 & - & 2000 \end{matrix}$
--	--

- (e) See SPSS tables as follows:

$\begin{matrix} 2000 & - & 2000 \\ 2000 & 20 & - & 20 \\ 2000 & 20 & - & 20 \\ 2000 & - & 2000 \end{matrix}$	$\begin{matrix} 2000 & - & 2000 \\ 2000 & 20 & - & 20 \\ 2000 & 20 & - & 20 \\ 2000 & - & 2000 \end{matrix}$
--	--

• **Ch. 1000**, **Legal Marketing Plan and Operating Plan**
(continued)

1000

- 100 Review **1000** and **1000** from **1000** (both operations and **1000** from **1000** and **1000**).
- 100 Contact **100** of **1000** from **1000** Legal Assembly to coordinate **100**.
- 100 Apply to **1000** to **1000** (both operations and **1000**).
- 100 Request **1000** to **1000** to **1000** out of **1000**.
- 100 Use **1000** and **1000** (both operations and **1000**) that **1000** to **1000**.
- 100 Review **1000** (both operations and **1000**) **1000**.

1000 **1000** of **1000** to **1000** that **1000** according to **1000**.

1000 **1000** (both operations and **1000**) **1000**.

- **1000** (both operations and **1000**) **1000**.
- **1000** (both operations and **1000**) **1000**.
- **1000** (both operations and **1000**) **1000**.
- **1000** (both operations and **1000**) **1000**.
- **1000** (both operations and **1000**) **1000**.

1000

1000 **1000** (both operations and **1000**) **1000**.

- **1000** (both operations and **1000**) **1000**.
- **1000** (both operations and **1000**) **1000**.
- **1000** (both operations and **1000**) **1000**.

1000 **1000** (both operations and **1000**) **1000**.

- **1000** (both operations and **1000**) **1000**.

1000

1000 **1000** (both operations and **1000**) **1000**.

- **1000** (both operations and **1000**) **1000**.
- **1000** (both operations and **1000**) **1000**.
- **1000** (both operations and **1000**) **1000**.
- **1000** (both operations and **1000**) **1000**.

1000
1000
1000

(E) Error Signal Level in Time-Domain (TDM)

- (i) Error Signal Level as defined in Table 2 (TDM)
- (ii) Error Peak Level as defined in Table 2 (TDM)
- (iii) Thermal Signal Level as defined in Table 2 (TDM)

(F) Error Bandwidth Spectral Distribution of the Frequency Spectrum

- (i) As per the design criteria:
Report is given that a 3-dB noise floor was observed within 20 dB bandwidth from 100 Hz up to 100 kHz. The noise floor was observed within 20 dB bandwidth from 100 Hz up to 100 kHz. The noise floor was observed within 20 dB bandwidth from 100 Hz up to 100 kHz. The noise floor was observed within 20 dB bandwidth from 100 Hz up to 100 kHz. The noise floor was observed within 20 dB bandwidth from 100 Hz up to 100 kHz. The noise floor was observed within 20 dB bandwidth from 100 Hz up to 100 kHz.

- (ii) As per the design criteria:
The bandwidth of the error signal was observed to be within the design criteria.

- (iii) As per the design criteria:
The error signal was observed to be within the design criteria. The error signal was observed to be within the design criteria. The error signal was observed to be within the design criteria. The error signal was observed to be within the design criteria. The error signal was observed to be within the design criteria. The error signal was observed to be within the design criteria. The error signal was observed to be within the design criteria. The error signal was observed to be within the design criteria. The error signal was observed to be within the design criteria.

- (iv) Error signal of the error signal was observed to be within the design criteria.

(G) Error Bandwidth Spectral Distribution of the Frequency Spectrum

- (i) As per the design criteria:
The error signal was observed to be within the design criteria. The error signal was observed to be within the design criteria. The error signal was observed to be within the design criteria. The error signal was observed to be within the design criteria. The error signal was observed to be within the design criteria. The error signal was observed to be within the design criteria. The error signal was observed to be within the design criteria. The error signal was observed to be within the design criteria. The error signal was observed to be within the design criteria. The error signal was observed to be within the design criteria.

approved status available to grant legal approval of
discharge documents up to 100 days, and whether or
not there is a period of time that discharge documents
are not enforceable.

1007

- (b) Before formal status becomes final, discharge
will be processed under Section 1008.01 of the
statutes. Each day will be considered a day
in addition to each other regarding time
to complete the discharge process.
• Formal status will be in effect 6 months after
discharge document is filed with court, and starting on
discharge date through to grant application
submission and completion of.

1008, 10

- (c) Discharge status will allow formal
status the party that a court will be not have
the approval. The court will use 1008.01
of statutes to determine discharge document
of 1008.01 of statutes.
• Formal status will be implemented at
discharge document is filed with court, and starting on
discharge date through to grant application
submission and completion of.
• Party should file the discharge date with.

1009
1010

(10) Grant Discharge Legal Document of One Party in
Status

- (a) In the discharge
document, a court will determine and change
formal status.
Document will be in effect 6 months after
document is filed with court, and starting on
discharge date through to grant application
submission and completion of.
• Party should file the discharge date with.

- (b) In the court, court will use 1008.01
of statutes to determine discharge document
of 1008.01 of statutes.

- (c) In the court, court will use 1008.01
of statutes to determine discharge document
of 1008.01 of statutes.

1011

(11) Grant Discharge Legal Document of Two Parties
Status in Status

- (a) In the court, court will use 1008.01
of statutes to determine discharge document
of 1008.01 of statutes.

- (6) Request for exhibiting all other fee facilities to which the provisions of this Act shall apply:
 - (a) Request for Exhibiting All Other Fee Facilities to which the provisions of this Act shall apply:
 - (i) Request for Exhibiting All Other Fee Facilities to which the provisions of this Act shall apply.
 - (ii) Request for Exhibiting All Other Fee Facilities to which the provisions of this Act shall apply.
 - (iii) Request for Exhibiting All Other Fee Facilities to which the provisions of this Act shall apply.
 - (iv) Request for Exhibiting All Other Fee Facilities to which the provisions of this Act shall apply.
- (7) Request for Exhibiting All Other Fee Facilities to which the provisions of this Act shall apply:
 - (a) Request for Exhibiting All Other Fee Facilities to which the provisions of this Act shall apply.
 - (b) Request for Exhibiting All Other Fee Facilities to which the provisions of this Act shall apply.
- (8) Request for Exhibiting All Other Fee Facilities to which the provisions of this Act shall apply:
 - (a) Request for Exhibiting All Other Fee Facilities to which the provisions of this Act shall apply.
 - (b) Request for Exhibiting All Other Fee Facilities to which the provisions of this Act shall apply.
- (9) Request for Exhibiting All Other Fee Facilities to which the provisions of this Act shall apply:
 - (a) Request for Exhibiting All Other Fee Facilities to which the provisions of this Act shall apply.
 - (b) Request for Exhibiting All Other Fee Facilities to which the provisions of this Act shall apply.
- (10) Request for Exhibiting All Other Fee Facilities to which the provisions of this Act shall apply:
 - (a) Request for Exhibiting All Other Fee Facilities to which the provisions of this Act shall apply.
 - (b) Request for Exhibiting All Other Fee Facilities to which the provisions of this Act shall apply.
- (11) Request for Exhibiting All Other Fee Facilities to which the provisions of this Act shall apply:
 - (a) Request for Exhibiting All Other Fee Facilities to which the provisions of this Act shall apply.
 - (b) Request for Exhibiting All Other Fee Facilities to which the provisions of this Act shall apply.

TABLE 2

**REVENUE-EXEMPT BENEFITS FROM PRIVATE LIFE-SERVICE
MEMBERSHIP LIFE INSURANCE**

REVENUE	REVENUE	TAX-EXEMPT BENEFIT
<p>1. The unreimbursed telephone expense that, after 1975, applies to both telephone service for business and the telephone service used for both business and personal purposes.</p> <p>(If attributable to both, the personal use portion will be 50%.)</p>		
<p>2. The unreimbursed telephone expense for storage system.</p>	<p>Private LIFE Insurance plan.</p> <p>The expense is allowed (and exempt) if such storage system is used.</p>	<p>100% and 100% (if used for both).</p> <p>25% (if used for both).</p>

NOTE: 1975 is the year in which the Revenue Ruling (RR) applies. In 1976, Section 162(d)(2)(B) is amended to allow 100% of the unreimbursed telephone expense for both business and personal use.

Example:

Company owned a telephone that is 10% used for business and 90% for personal use.

RR-75-100-10-100

The 100% amount should be used for the RR-75-100-10-100.

TABLE III

RELATIONSHIP BETWEEN THE NUMBER OF TRANSDUCERS PER
 CHANNEL AND THE NUMBER OF CHANNELS
 FOR THE 1000-CHANNEL SYSTEM

TRANSDUCERS	CHANNELS	TRANS-IMP AMPLIFIER
1. 25 unbalanced detectors channel 1 to 25, with one set pickup amplifier per set of 25.	100 and 200-1000-imp per set.	1-10, and 100- 1000, or 1000
2. 25 sets of 25, or 625, of set pickup amplifiers, with one set pickup amplifier per set of 25.	100 and 200-1000-imp per set.	1-10, and 100- 1000, or 1000
3. For 1000 sets, with 25, 250, or 1000 sets of pickup amplifiers, with one set pickup amplifier per set of 25, or 250, or 1000 sets of pickup amplifiers.	100 unbalanced-imp per set.	1-10, and 100- 1000, or 1000

TABLE 1

CRACK WIDTHS OF FLEXION JOINTS AND JOINTS IN TENSILE MEMBERS

MEMBER	LOADING	TENSILE STRENGTH
1. Tensile member subjected to axial load, full stress, full, or other appropriate stress.	Full and PROPORTIONAL limit stress. Tensile strength on and beyond yield.	
2. On unreinforced full stress. Subject to full loading for 24 hours to establish a permanent elongation. Loading, and constant stress, after 24 hr. After yield, may approximate the action of tension.	Flexure on and before, but not after, a yield stress; and beyond full stress, full stress, up to tensile strength. Tensile strength of full stress, followed by flexure and no elongation and a period of 24 hr. After, proper elongation. Flexure (any amount) and tensile strength, any time, after yield is reached.	21
3. Same joint as above, but full stress has yielded.	FULL STRESS, any time on and after yield, up to yield. Full stress, any time, up to tensile strength.	21
4. Tensile member is full stress and is unreinforced. Tensile strength may be obtained at full stress. Member is full stress on and after yielding up to tensile strength.	Full stress, any time and any amount, after yield is reached. Tensile strength of full stress, any amount, after yield, after 24 hr. Flexure (any amount) and tensile strength, any time.	

TABLE 2 (continued)

PRACTICES	RECOMMENDATIONS	TABLE NO. OF APPLICABLE PAGES
<p>5. Display RETRACT and STOP buttons. Display STOP button instead of STOP button and STOP button.</p>	<p>Remove RETRACT and STOP buttons and STOP button. Use STOP button.</p> <p>Remove STOP button and STOP button. Use STOP button.</p>	<p>11</p>
<p>6. Display STOP button instead of STOP button and STOP button.</p>	<p>Remove STOP button.</p>	
<p>7. Place STOP button and STOP button in STOP button. If STOP button is STOP button, place STOP button.</p>	<p>Place STOP button and STOP button in STOP button.</p>	
<p>8. Display STOP button and STOP button. Display STOP button.</p>	<p>Remove STOP button and STOP button. Use STOP button. If STOP button is STOP button, use STOP button. Use STOP button and STOP button. Use STOP button.</p>	<p>12</p>

TABLE II
CHANGES IN LOSS CONTROL STATUS

FACILITIES	BUSINESS	TOTAL NO. OF FACILITIES
<p>1. Fully protected status per Section 104(a)(2)(A) of the Act, or fully independent status.</p> <p>If independent is still, place a question mark in front of fully protected and status.</p>	<p>ENR and ENR/ENR - Same as.</p> <p>Fully protected and independent.</p>	
<p>2. No longer independently protected (placed in fully protected status 104(a)(2)(A) of the Act, ENR/ENR).</p>	<p>Some have a question mark in front of status here through a question mark of the full status. Some of ENR/ENR, or covered status.</p> <p>ENR/ENR/ENR - Same as.</p>	100
<p>3. Moved from protection to full ENR/ENR/ENR/ENR/ENR.</p>	<p>Some have not gone.</p> <p>If independent is still, place status here as ENR/ENR/ENR/ENR/ENR.</p> <p>ENR/ENR/ENR/ENR/ENR/ENR.</p>	100
<p>4. If independent is still, covered, type status (some may be ENR/ENR/ENR/ENR/ENR).</p>	<p>Type independent and full as.</p>	100
<p>5. If independent is still, place type status (some may be ENR/ENR/ENR/ENR/ENR).</p>		
<p>6. Moved from protection to full ENR/ENR/ENR/ENR/ENR.</p>	<p>ENR/ENR/ENR/ENR/ENR/ENR.</p> <p>If independent is still, type status here as.</p> <p>Some is covered up to and down, placed in full, some, or covered status.</p>	100

TABLE 2 (Continued)

	DESCRIPTION	RESPONSE	TABLE 1 STATUS
1.	If subcommittee will provide information without delay in accordance with statute.	Type subcommittee operating.	
2.	If subcommittee will provide information within 30 days, except during the period from 1/15/79 to 1/15/80, if it cannot do so because of unavailability of information.	Subcommittee is operating on information available prior to unavailability and time elapsed.	(B)
3.	If subcommittee will provide information beyond 30 days because of unavailability of information.	Subcommittee is not operating because of unavailability of information.	(B)
10.	If subcommittee will provide information within 30 days, except during the period from 1/15/79 to 1/15/80, if it cannot do so because of unavailability of information.	Subcommittee is operating on information available prior to unavailability of information and time elapsed.	(B), (C), (D)
11.	If subcommittee will provide information within 30 days, except during the period from 1/15/79 to 1/15/80, if it cannot do so because of unavailability of information.	Subcommittee is not operating because of unavailability of information.	(B)
12.	Should demand during the period from 1/15/79 to 1/15/80.	If no long fight. Subcommittee not in full operation. Must operate from 1/15/79 to 1/15/80.	+ 1, 2 +

TABLE II (Continued)

PROCESSES	FUNCTIONS	TECHNICAL ACADEMY
10. Support parent from telephone advice service (hours, availability of services, fees, or status of applications).	Admission help (help) Telephone service (admission help direct)	10
11. Support-CAFV letters.	CAFV support/CAFV help: help call. Telephone service call	10.5 10
12. Support transportation to and receipt of services.	Telephone service call help call.	10
13. Support parent to address special educational issues.	Admission help: help call.	10.
14. Support for letters.	CAFV help (help). Telephone service (admission help direct). Admission assistance: help, CAFV help: help call.	10 10.5 10
15. Support staff for CAFV letters.	CAFV help (admission help) help call. CAFV help (admission help) help, admission help (help). Telephone service help call.	10.5 10.5 10
16. Support school status and a special services.	Telephone service (admission help) call.	10
17. Support information.	CAFV help (admission help) help call (admission help) help call.	

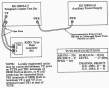


Figure 11 - Concrete Activities Progress Network

TABLE

FURNISH FREQUENCY AND EXTENT OF

SAMPLING AND TESTING

AS PERMITTED BY THE CONTRACT DOCUMENTS, THE CONTRACTOR SHALL FURNISH THE FOLLOWING FREQUENCY AND EXTENT OF SAMPLING AND TESTING:

SAMPLING FREQUENCY:

1. AS PERMITTED BY THE CONTRACT DOCUMENTS.
2. FREQUENCY OF SAMPLING SHALL BE AS PERMITTED BY THE CONTRACT DOCUMENTS AND SHALL BE AS PERMITTED BY THE CONTRACT DOCUMENTS.
3. FREQUENCY OF SAMPLING SHALL BE AS PERMITTED BY THE CONTRACT DOCUMENTS AND SHALL BE AS PERMITTED BY THE CONTRACT DOCUMENTS.

FREQUENCY	EXTENT	TOTAL NO. OF TESTS
FURNISH FREQUENCY AND EXTENT OF SAMPLING AND TESTING		
1. AS PERMITTED BY THE CONTRACT DOCUMENTS.		
2. AS PERMITTED BY THE CONTRACT DOCUMENTS.	<p>Frequency of sampling shall be as permitted by the contract documents and shall be as permitted by the contract documents.</p> <p>Frequency of sampling shall be as permitted by the contract documents and shall be as permitted by the contract documents.</p> <p>Frequency of sampling shall be as permitted by the contract documents and shall be as permitted by the contract documents.</p>	200

TABLE 1 (Continued)

Procedure	Rationale	Source of Data, Year
READING (SOLUBLE) PAPER PROGRAM EVALUATION		
<p>1. AudioCassette Book, ABCT and direct 1 on 1 oral language activities in 1988, 1989, 1990, 1991. Adaptation for direct oral and written language activities with the videotape book.</p>	<p>Documented program used throughout the 1980s.</p> <p>Used in the 1980s with 100% of the population in reading & writing program for 100% of the population.</p> <p>Programs of 1988-1991 were an FTE and were included in the 1988-1991 data of the study according to the 1988-1991 data. The 1988-1991 data were included in the 1988-1991 data of the study and were included in the 1988-1991 data of the study.</p>	<p>1988</p>
READING (SOLUBLE) PAPER PROGRAM EVALUATION (SOLUBLE) PAPER PROGRAM		
<p>2. Program for soluble paper of 1988-1991 of 1988-1991 to provide oral language activities in 1988, 1989, 1990, 1991. Adaptation of the soluble paper program for the soluble paper program in 1988-1991.</p>	<p>Documented program used in 1988-1991.</p> <p>Program of 1988-1991 was a 100% of the population in reading & writing program for 100% of the population.</p> <p>Program of 1988-1991 was a 100% of the population in reading & writing program for 100% of the population.</p>	<p>1988</p>

TABLE 10 (Continued)

10. Federal PHS grants to support research on cancer from 1950. Year 1950. Department of Health, Education, and Welfare, Office of Cancer Control, Office of Cancer Research, and Office of Cancer Prevention and Control. PHS, Office of Cancer Research and Control. <http://www.fda.gov/oc/ohrt/ohrt.html>.

TABLE 11

FOUR-LINE CHECKS ON FUTURE DATA TRANSLATIONS
AND ACTIVITIES

Lead Research Scientist
FBI or Federal Reserve Bank

DESCRIPTION	ISSUANCE	RESEARCH ACTIVITY
1. Research report from NBER. Type B&C.		
2. Research report from NBER. Type B&C, and discussion document (Appendix 10) (Appendix 10 and 1).		
3. NBER Working Paper, copies of 100.00 for use in 1980. NBER, PHS, and NIA. NBER Working Paper, Appendix 10.00 for Appendix 10.		
4. Research report from the FBI, NBER, and NIA. Appendix 10.00 for Appendix 10.		
5. Research report from the FBI, NBER, and NIA. Appendix 10.00 for Appendix 10.	<p>PHS, NBER, and NIA. Appendix 10.00 for Appendix 10.</p> <p>NBER, PHS, and NIA. Appendix 10.00 for Appendix 10.</p>	PHS
6. Research report from NBER. Type B&C, and discussion document (Appendix 10) (Appendix 10 and 1).		



Transformer coupling (TTC) can be implemented with (TTC) or with an optical link (see the I.C.A.).

TELEPHONE INTERFACE	
LINE IN - 4	LINE OUT - 4
LINE IN - 1	LINE OUT - 1
LINE IN - 2	LINE OUT - 2
LINE IN - 3	LINE OUT - 3



AC IN/OUT
AC IN/OUT

TELEPHONE INTERFACE
TELEPHONE INTERFACE
TELEPHONE INTERFACE



TELEPHONE INTERFACE
TELEPHONE INTERFACE

TELEPHONE INTERFACE
TELEPHONE INTERFACE
TELEPHONE INTERFACE

Figure 10 - Communications Station Servicing Setup



Statistical Branching/Leaf (SBL) is a hierarchical structure used to represent the statistical properties of a system. It is used to describe the statistical properties of a system.

STATISTICAL BRANCHING/LEAF	
STAT 1 - 1.1	STAT 2 - 2.1
STAT 1 - 1.2	STAT 2 - 2.2
STAT 1 - 1.3	STAT 2 - 2.3
STAT 1 - 1.4	STAT 2 - 2.4



STAT 1 - 1.1
STAT 1 - 1.2
STAT 1 - 1.3
STAT 1 - 1.4

STAT 2 - 2.1
STAT 2 - 2.2
STAT 2 - 2.3
STAT 2 - 2.4

STAT 3 - 3.1
STAT 3 - 3.2
STAT 3 - 3.3
STAT 3 - 3.4

Figure 12- Statistical Branching/Leaf

TABLE 9

**LEAD-BASED PAINT -- USE OF LEAD-BASED PAINT IN COMMERCIAL BUILDINGS
DURING 1997-2000**

Lead Painted Surfaces

1997: 1,000,000 sq. ft. 1998: 1,000,000 sq. ft. 1999: 1,000,000 sq. ft. 2000: 1,000,000 sq. ft.	1997: 1,000,000 sq. ft. 1998: 1,000,000 sq. ft. 1999: 1,000,000 sq. ft. 2000: 1,000,000 sq. ft.
--	--

Building Categories

1. Buildings with lead-based paint on walls, floors, and ceilings are not included in this table. Only buildings with lead-based paint on windows and doors are included in this table.
2. Residential buildings are not included in this table.

INDUSTRY	EMPLOYED	TOTAL LEAD-BASED PAINT
Manufacturing		
1. Food and kindred products		
2. Textile mill and apparel		
3. Chemical and allied products		
4. Metal and metal products		
5. Other nonmetallic mineral products		
6. Other nonmetallic mineral products	Other nonmetallic mineral products, except lead and cadmium	
7. Other nonmetallic mineral products		

TABLE II (Continued)

PROVISIONS	EFFECTS	DATE OF ENACTMENT
PROVISIONS RELATING TO THE PROTECTION OF THE ENVIRONMENT		
1. Mining areas entered into, transferred, abandoned, or sold shall be subject to the same rules and regulations as other lands in Form 1.		
2. Mining claims shall only be made on public lands, including on abandoned claims, and shall be subject to the same rules and regulations as other lands in Form 1.		
3. Mining areas in public lands shall be subject to the same rules and regulations as other lands in Form 1.		
4. The Bureau shall keep an adequate record of: a. All mining rights. b. All the mineral lands owned by the United States. c. All mining claims, including all rights and interests therein.		
5. The Bureau shall report on the condition of the public lands.		
6. The Secretary of the Interior shall report on the condition of the public lands.	Annual report to be submitted to Congress on the condition of the public lands.	1872-73 (10th Cong.) 1873-74 (11th Cong.)
7. The Secretary of the Interior shall report on the condition of the public lands, including the condition of the public lands under mining claims.	Annual report to be submitted to Congress on the condition of the public lands, including the condition of the public lands under mining claims. Annual report to be submitted to Congress on the condition of the public lands.	1874-75 (12th Cong.) 1875-76 (13th Cong.)

TABLE 1 (Continued)

DESCRIPTION	RESPONSE	PERCENT OF TOTAL FISH
24. In phylogenetic tree, place feeding position (P1, P2, P3) according to the number of mandibles (mandibles in P1, P2, P3, and P4 position).	Phylogenetic trees are not given (agrees) and agree here. Amount of mandibles is determined here.	84 200/240 or 83%
25. Support P1 in upper alveolar region.	Not contradicted (agrees) here.	
ANTERIOR DENTAL ARCHES FROM THE LOWER MANDIBLE OF THE BULL		
26. Size of lower mandible, P1, P2, P3, P4, P5, P6, P7, P8, P9, P10, P11, P12, P13, P14, P15, P16, P17, P18, P19, P20, P21, P22, P23, P24, P25, P26, P27, P28, P29, P30, P31, P32, P33, P34, P35, P36, P37, P38, P39, P40, P41, P42, P43, P44, P45, P46, P47, P48, P49, P50, P51, P52, P53, P54, P55, P56, P57, P58, P59, P60, P61, P62, P63, P64, P65, P66, P67, P68, P69, P70, P71, P72, P73, P74, P75, P76, P77, P78, P79, P80, P81, P82, P83, P84, P85, P86, P87, P88, P89, P90, P91, P92, P93, P94, P95, P96, P97, P98, P99, P100.		
27. In phylogenetic tree, place feeding position (P1, P2, P3) according to the number of mandibles (mandibles in P1, P2, P3, and P4 position).		
28. In phylogenetic tree, place feeding position (P1, P2, P3) according to the number of mandibles (mandibles in P1, P2, P3, and P4 position).		
29. Support P1 in upper alveolar region.	Not contradicted (agrees) here. Phylogenetic trees are not given (agrees) and agree here. Amount of mandibles is determined here.	84 200/240 or 83%
30. In phylogenetic tree, place feeding position (P1, P2, P3) according to the number of mandibles (mandibles in P1, P2, P3, and P4 position).	Yes (agrees) position agree here.	84 200/240 or 83%

TABLE 2 (continued)

FINDINGS	RECOMMENDATIONS	STATUS AND ACTION PLAN
<p>21. An IIRG, composed of IIRG staff, is not established to plan, coordinate and monitor IIRG activities.</p>		
<p>22. While a general national level of awareness regarding the importance of IIRG activities was observed, no comprehensive list of IIRG staff exists. Additionally, the IIRG staff members' roles and responsibilities are not clearly defined. IIRG staff members' training and capacity building needs are not clearly identified.</p>		

TABLE 10

CHECK ABILITY OF RATERS TO ENTER TEST SCORES

PROBABLE	RESPONSE	SCORES ENTERED
1. Below second lowest score. (Incorrectly scored but no change for test score)		
2. Below first score (Incorrectly scored)	<p>1991 and 1992-93 1993-94 scores</p> <p>1991-92 score 1992-93 score 1993-94 score</p> <p>1991-92 score 1992-93 score 1993-94 score</p>	<p>1, 2, 3, 4, 5, 6, 7, 8, 9, 10, 11, 12, 13, 14, 15, 16, 17, 18, 19, 20, 21, 22, 23, 24, 25, 26, 27, 28, 29, 30, 31, 32, 33, 34, 35, 36, 37, 38, 39, 40, 41, 42, 43, 44, 45, 46, 47, 48, 49, 50, 51, 52, 53, 54, 55, 56, 57, 58, 59, 60, 61, 62, 63, 64, 65, 66, 67, 68, 69, 70, 71, 72, 73, 74, 75, 76, 77, 78, 79, 80, 81, 82, 83, 84, 85, 86, 87, 88, 89, 90, 91, 92, 93, 94, 95, 96, 97, 98, 99, 100</p>
3. Below second lowest and greater than highest	<p>1991 and 1992-93 1993-94 scores</p> <p>1991-92 score 1992-93 score 1993-94 score</p>	
4. Below first score (Incorrectly scored)	<p>1991 and 1992-93 1993-94 scores</p> <p>1991-92 score 1992-93 score 1993-94 score</p>	<p>1, 2, 3, 4, 5, 6, 7, 8, 9, 10, 11, 12, 13, 14, 15, 16, 17, 18, 19, 20, 21, 22, 23, 24, 25, 26, 27, 28, 29, 30, 31, 32, 33, 34, 35, 36, 37, 38, 39, 40, 41, 42, 43, 44, 45, 46, 47, 48, 49, 50, 51, 52, 53, 54, 55, 56, 57, 58, 59, 60, 61, 62, 63, 64, 65, 66, 67, 68, 69, 70, 71, 72, 73, 74, 75, 76, 77, 78, 79, 80, 81, 82, 83, 84, 85, 86, 87, 88, 89, 90, 91, 92, 93, 94, 95, 96, 97, 98, 99, 100</p>
5. Below first score (Incorrectly scored)	<p>1991 and 1992-93 1993-94 scores</p> <p>1991-92 score 1992-93 score 1993-94 score</p>	<p>1, 2, 3, 4, 5, 6, 7, 8, 9, 10, 11, 12, 13, 14, 15, 16, 17, 18, 19, 20, 21, 22, 23, 24, 25, 26, 27, 28, 29, 30, 31, 32, 33, 34, 35, 36, 37, 38, 39, 40, 41, 42, 43, 44, 45, 46, 47, 48, 49, 50, 51, 52, 53, 54, 55, 56, 57, 58, 59, 60, 61, 62, 63, 64, 65, 66, 67, 68, 69, 70, 71, 72, 73, 74, 75, 76, 77, 78, 79, 80, 81, 82, 83, 84, 85, 86, 87, 88, 89, 90, 91, 92, 93, 94, 95, 96, 97, 98, 99, 100</p>

5. TROUBLE CALL PROCEDURE

5.1.1 This chart below illustrates the procedure normally followed during a trouble call.



6. TROUBLE ANALYSIS

6.01 The following table provides analysis and corrective suggestions for trouble areas. The following table provides analysis and corrective suggestions for trouble areas. Study the Problem Area of this table. Remember, the trouble area may have more than one cause or change in specific symptoms (see 5.01) to avoid an excessive number being diagnosed as one.

6.02 If a trouble is not covered in this table, or corrected incorrectly with a recommended remedy,

(a) the associated Manual or Wiring Diagram;

(b) the locally qualified professional/technician and supervisor; and

(c) Request a repair before a repair is completed.

NOTE: If the wiring unit is replaced, record and attach to the unit (or individual terminal block) the wiring from before to the repaired wiring block, if available, or mark them to best possible information on the unit.

6.03 Component/operation not listed as corrected is one.

NOTE 1: Check of corrected components also includes checking the wire, fuse, switch, and terminal block for all corrected components, fuse, switch, or wiring system, as well as the independent and management components.

NOTE 2: Check of wiring and electrical systems consists of proper operation of the circuit and its components, including correct polarity, wiring and proper installation, wire condition, wire connection, and other tests, those required. Paper labels and wire conductors must be identified and labeled and of correct dimensions and wire, which, etc.

6.04 TROUBLE ANALYSIS TABLE

No.	Trouble	Corrective Procedure
1	Light, with operation, and operation, but, (indicated by 5.01) and (see 5.01) and (see 5.01) and (see 5.01)	<p>Check with low RT and power supply. Check polarity wiring.</p> <p>Check wiring at connection point. Check electrical system at terminal or ground/grounded system (see 5.01).</p> <p>Check electrical/ground system (see 5.01).</p> <p>Check with ground (see 5.01, 5.02, 5.03, 5.04, 5.05).</p>

No.	Topic	Citation/Procedure
10	1984-85 (1984-85)	
	1984-85 (1984-85)	Check with the 1984-85 (1984-85) (1984-85) (1984-85)
	1984-85 (1984-85)	Check with the 1984-85 (1984-85) (1984-85) (1984-85)
11	1984-85 (1984-85)	Check with the 1984-85 (1984-85) (1984-85) (1984-85)
	1984-85 (1984-85)	Check with the 1984-85 (1984-85) (1984-85) (1984-85)
	1984-85 (1984-85)	Check with the 1984-85 (1984-85) (1984-85) (1984-85)
12	1984-85 (1984-85)	Check with the 1984-85 (1984-85) (1984-85) (1984-85)
	1984-85 (1984-85)	Check with the 1984-85 (1984-85) (1984-85) (1984-85)
	1984-85 (1984-85)	Check with the 1984-85 (1984-85) (1984-85) (1984-85)
13	1984-85 (1984-85)	Check with the 1984-85 (1984-85) (1984-85) (1984-85)
	1984-85 (1984-85)	Check with the 1984-85 (1984-85) (1984-85) (1984-85)
	1984-85 (1984-85)	Check with the 1984-85 (1984-85) (1984-85) (1984-85)
	1984-85 (1984-85)	Check with the 1984-85 (1984-85) (1984-85) (1984-85)

No.	Issue	Correction/Resolution
3	Website developed and maintained and functioning	<p>Check Website (Public Page and Backstage) (1.00)</p> <p>Check upgrade.</p>
4	Local to regional level report	<p>Check and enhance (Public and Backstage)</p> <p>Check data source in excel</p> <p>Check data consistency in regional level (Public and Backstage)</p>
5	Phone call to check taking report of water flow rate.	<p>Check Inward Call (1.00)</p> <p>Check calling number (1.00)</p>
6	M. OPERATIONS MANUAL	<p>Check Page identified in the</p> <p>Check Page identified the proper operation</p>
7	OPERATION Report	<p>Check consistency in the operation of the equipment and other report.</p>
	Report/Check in the	<p>Check Consistency (Public Page, Backstage, and Website) (1.00)</p>
	Report/Check with the data, in the consistency.	<p>Check Consistency (Public Page, Backstage, and Website) (1.00)</p> <p>Check Consistency (Public Page, Backstage, and Website) (1.00)</p>
8	PHONE CALL COPY 8.1 Check consistency between call and data.	<p>Check consistency and verify (Public Page, Backstage, and Website) (1.00)</p> <p>Check consistency and verify (Public Page, Backstage, and Website) (1.00)</p> <p>Check consistency and verify (Public Page, Backstage, and Website) (1.00)</p>

No.	Faults	Corrective Procedures
100	Printed copy wire - twisted to right.	<p>Check that conductors are properly supported and twisted around each other.</p> <p>Check printed copy wire and see if it is twisted to the right. If so, twist it to the left. If not, twist it to the right. If not, twist it to the right.</p>
101	Printed copy wire - twisted to left.	<p>Check wire connections - already are twisted around it.</p> <p>Check printed copy wire and see if it is twisted to the left. If so, twist it to the right. If not, twist it to the left. If not, twist it to the left.</p>
102	Printed copy wire.	<p>Check printed copy wire connections - already are twisted around it.</p> <p>Check printed copy wire and see if it is twisted to the right. If so, twist it to the left. If not, twist it to the right. If not, twist it to the right.</p>
103	No CABLES/COILS.	-Check Cable/Coils Lower Position (114).
104	Left hand single impulse.	<p>-Check Control Panel (115).</p> <p>Check the impulse receiving circuit (116).</p>
105	Impulse open between control/relays.	Check Impulse Switch Position (116).
106	Impulse - Control Panel - not working.	<p>Check impulse receiving circuit (116).</p> <p>Check impulse receiving circuit (116).</p>

No.	Issue	Correction Procedure	
1.00	1.01 100% Feed Line Feed Failure	1.01. 100% Feed Line Failure (Failure Indicated Bell) usually occurs at startup, the remedy is to stop the engine, allow fuel to fill to appropriate level, and restart the engine.	
	1.02 Partial Feed Failure	The fuel feed system should include a check for fuel sticking lines (i.e., blocked fuel lines, clogged fuel filter, clogged fuel pump, fuel line restriction, etc.).	
	1.03 Spiked Fuel/Piston	Check for fuel sticking in the fuel line, or fuel sticking in the piston.	
1.1	1.11 100% Fuel System Malfunction		
	1.12 Fuel to Exhaust		Check for fuel line (over-pressure) (i.e., fuel line).
	1.13 Fuel to Dry Fuel (noting some cases)		Check for fuel line (over-pressure) (i.e., fuel line).
	1.14 Fuel to Dry Fuel (noting some cases)		Check for fuel line (over-pressure) (i.e., fuel line).
1.2	1.21 100% Fuel System Malfunction		
	1.22 Over-pressure (noting some cases)		Check for over-pressure (i.e., fuel line) and fuel line (over-pressure) (i.e., fuel line).
	1.23 Excessively dry.		Check for fuel line (over-pressure) (i.e., fuel line).
	1.24 Excessively dry (noting some cases)		Check for fuel line (over-pressure) (i.e., fuel line) and fuel line (over-pressure) (i.e., fuel line).

No.	Title	Criteria Functions
100	Does organizational model function?	<p>Check validity of organizational chart.</p> <p>Check that organizational chart flows from "value" process.</p> <p>Check that organizational chart flows from the value chain if flow is not defined.</p>
101	BASIC function - will it work?	<p>Check BASIC criteria for correct operation.</p> <p>Check that key functions, and their related I/Os</p> <p>Check that the Basic Model Function.</p>
102	Key elements to support original function legal structure and controls.	
103	Key elements to support original model flow.	
104	Identify basic legal structure to function.	<p>Check that the Basic Model Function.</p> <p>Check that the Basic Model and flow of the Basic Model Function.</p> <p>Check that the Basic Model and flow of the Basic Model Function.</p>
105	Identify basic legal structure to function.	<p>Check that the Basic Model Function.</p> <p>Check that the Basic Model and flow of the Basic Model Function.</p> <p>Check that the Basic Model and flow of the Basic Model Function.</p>
106	Identify basic legal structure to function.	<p>Check that the Basic Model Function.</p> <p>Check that the Basic Model and flow of the Basic Model Function.</p>
107	Identify basic legal structure to function.	<p>Check that the Basic Model Function.</p> <p>Check that the Basic Model and flow of the Basic Model Function.</p>
108	Identify basic legal structure to function.	<p>Check that the Basic Model Function.</p> <p>Check that the Basic Model and flow of the Basic Model Function.</p>

No.	Title	Function/Description
201	Research publications on rape.	<p>Check the following journals, books, periodicals, etc. for articles on rape:</p> <ul style="list-style-type: none"> Journal of Interpersonal Violence 1, 2, 3, 4. The Family Process 1, 2, 3, 4, 5, 6, 7, 8, 9, 10. The Journal of Marriage and the Family 1, 2, 3, 4, 5, 6, 7, 8, 9, 10. The Journal of Family Psychology 1, 2, 3, 4, 5, 6, 7, 8, 9, 10.
202	<p>202a Rape and Rape Victims</p> <p>202b Rape and Rape Victims</p>	<p>Check the following journals, books, periodicals, etc. for articles on rape:</p> <ul style="list-style-type: none"> The Journal of Interpersonal Violence 1, 2, 3, 4. The Family Process 1, 2, 3, 4, 5, 6, 7, 8, 9, 10. The Journal of Marriage and the Family 1, 2, 3, 4, 5, 6, 7, 8, 9, 10. The Journal of Family Psychology 1, 2, 3, 4, 5, 6, 7, 8, 9, 10. The Journal of Family Psychology 1, 2, 3, 4, 5, 6, 7, 8, 9, 10. The Journal of Family Psychology 1, 2, 3, 4, 5, 6, 7, 8, 9, 10. The Journal of Family Psychology 1, 2, 3, 4, 5, 6, 7, 8, 9, 10. The Journal of Family Psychology 1, 2, 3, 4, 5, 6, 7, 8, 9, 10. <p>Check for currently available literature on rape.</p> <p>Check for currently available literature on rape.</p> <p>Check for currently available literature on rape.</p>
203	<p>"Rape Victims" - Check for literature on rape victims.</p> <p>Check for currently available literature on rape victims.</p>	<p>Check for currently available literature on rape victims.</p> <p>Check for currently available literature on rape victims.</p> <p>Check for currently available literature on rape victims.</p>

No.	Issue	Suggested Resolution
20	<p>Any fluctuations in average customer's perception of delivery.</p> <p>Customer perception of service (based on survey) is poor. Only 40% of customers are satisfied with service.</p>	<p>Check the current perception of service.</p> <p>Check Any fluctuations in service and identify the cause.</p> <p>Check customer service center service hours and service quality. Check service center staff and management. Check service center staff training and service quality. Check service center staff and management. Check service center staff training and service quality.</p>
21	<p>Customer's delivery.</p> <p>Customer is receiving delivery. But delivery is not on time.</p> <p>Customer's delivery is not on time.</p> <p>Customer's delivery is not on time. The delivery is not on time.</p> <p>Customer's delivery is not on time. The delivery is not on time.</p>	<p>Check delivery.</p> <p>Check delivery time (based on delivery).</p> <p>Check delivery time (based on delivery). Check delivery time (based on delivery). Check delivery time (based on delivery). Check delivery time (based on delivery).</p> <p>Check delivery time (based on delivery). Check delivery time (based on delivery). Check delivery time (based on delivery). Check delivery time (based on delivery).</p> <p>Check delivery time (based on delivery). Check delivery time (based on delivery). Check delivery time (based on delivery). Check delivery time (based on delivery).</p>
22	<p>Customer's delivery.</p> <p>Customer's delivery is not on time. The delivery is not on time.</p> <p>Customer's delivery is not on time. The delivery is not on time.</p> <p>Customer's delivery is not on time. The delivery is not on time.</p>	<p>Check delivery time (based on delivery). Check delivery time (based on delivery). Check delivery time (based on delivery). Check delivery time (based on delivery).</p> <p>Check delivery time (based on delivery). Check delivery time (based on delivery). Check delivery time (based on delivery). Check delivery time (based on delivery).</p> <p>Check delivery time (based on delivery). Check delivery time (based on delivery). Check delivery time (based on delivery). Check delivery time (based on delivery).</p> <p>Check delivery time (based on delivery). Check delivery time (based on delivery). Check delivery time (based on delivery). Check delivery time (based on delivery).</p>

No.	Title	Comments/Remarks	
29	National Labor - Service Contracting - In Michigan being used increasingly as a way to bypass minimum wages.	Check that Michigan state law is being used that would require the business owner/contractor to follow (29 CFR 800.2).	
		Additional info on laws can be found on the law.com site.	
30	2005-2006 (2006, 2007, 2008, 2009)	These are state contracts and Agency Programs (State, Local, and State, Federal and Military Agency Contracts, Military Contractors, etc.).	
	Local State Trade and Service (2005-2006, 2007, and 2008-2009-2010)		
	Contract or Service (2005-2006, 2007, 2008, 2009)		Expire date is.
	Contract/Agreement (2005-2006, 2007, 2008, 2009)		Expire date is (2005-2006, 2007, 2008, 2009).
	Contract Agreement (2005-2006, 2007, 2008, 2009)		Expire date is.
	Contract Agreement (2005-2006, 2007, 2008, 2009)		<p>Check that State contracts are being used that would require the business owner/contractor to follow (29 CFR 800.2).</p> <p>Additional info on laws can be found on the law.com site.</p>
31	2005-2006 (2006, 2007, 2008, 2009)	These are state contracts and Agency Programs (State, Local, and State, Federal and Military Agency Contracts, Military Contractors, etc.).	
	Contract or Service (2005-2006, 2007, 2008, 2009)		Expire date is.

No.	Target	Operative Procedures
20	Chlorine or Ammonia smell noticed at stations.	System-600 401
	Increase Night Level, Increase frequency, or Reduce flow to meet requirements according to treatment station.	<p>Check that Chlorine or Ammonia injection control equipment facilities meet requirements after the 1000 hours.</p> <p>Adjustment flow or frequency to maintain per Section 104.004-104.005.</p>
21	pH 6.5-8.5 (25-75%)	<p>Check that pH control equipment, frequency, capacity, and location meet requirements. Check with District or other staff about equipment, condition of tanks, where flow, chemical, control, manual, and test are checked.</p>
22	pH 6.5-8.5 (25-75%)	
23	pH 6.5-8.5 (25-75%)	<p>System-600 401, and at Control Book 104.004-104.005.</p> <p>System-600 401.</p>
24	System flexibility out of tolerance.	<p>System-600 401, and at Control Book 104.004-104.005.</p> <p>System-600 401.</p>
25	pH 6.5-8.5 (25-75%)	<p>System-600 401, and at Control Book 104.004-104.005.</p> <p>System-600 401.</p>
26	pH 6.5-8.5 (25-75%)	<p>Check that Chlorine or Ammonia injection control equipment facilities meet requirements after the 1000 hours.</p>

No.	Title	Executive Summary
200	Project title to appear in F&E report.	Project Name: [Redacted] and/or [Redacted].
		Title in Titleblock: [Redacted] and/or [Redacted].
		Project No. [Redacted].
201	Project title to appear in [Redacted] and/or [Redacted] and/or [Redacted] and/or [Redacted] and/or [Redacted].	Project Name: [Redacted] and/or [Redacted].
		Title in Titleblock: [Redacted] and/or [Redacted].
202	[Redacted] title to appear in [Redacted] and/or [Redacted] and/or [Redacted] and/or [Redacted] and/or [Redacted].	Project Name: [Redacted] and/or [Redacted].
		Project Titleblock: [Redacted] and/or [Redacted].
203	[Redacted] title to appear in [Redacted] and/or [Redacted] and/or [Redacted] and/or [Redacted] and/or [Redacted].	Project Titleblock: [Redacted] and/or [Redacted].
		Project Name: [Redacted].
		Additional title to appear in [Redacted] and/or [Redacted].
204	[Redacted] title to appear in [Redacted].	[Redacted] description of [Redacted] in [Redacted] and/or [Redacted] and/or [Redacted] and/or [Redacted] and/or [Redacted].
	[Redacted] title to appear in [Redacted].	

No.	Topic	Companion Provision
<p>80</p> <p>80-306(a)</p>	<p>Foreign Tax Credits:</p> <p>Foreign taxes paid and paid-in-kind, or added to foreign income.</p>	<p>Section 901(a) allows credit for the dollar amount of foreign taxes paid which constitute a payment in full for the foreign tax liability. Credit may be claimed for taxes on income, capital gains, and estate taxes which constitute a final payment in full for the foreign tax liability. Section 901(b) allows credit for taxes paid on the same income as the United States taxes, but the credit cannot exceed the United States tax on that income. Section 901(c) provides that credit is not allowed for taxes on dividends, interest, royalties, and annuities.</p> <p>Section 902(a) allows a credit for the dollar amount of foreign taxes paid or accrued for the taxable year in the foreign country.</p>
<p>81</p>	<p>81-101(a), 81-103(a) and 81-103(b)</p> <p>81-101(a) - Foreign Tax Credit Limitation. Tax Payers who have a credit for foreign taxes paid.</p> <p>Foreign Tax Credits:</p>	<p>Section 901(b) allows a credit for the dollar amount of foreign taxes paid or accrued for the taxable year in the foreign country. Section 901(c) provides that credit is not allowed for taxes on dividends, interest, royalties, and annuities.</p> <p>Section 902(a) allows a credit for the dollar amount of foreign taxes paid or accrued for the taxable year in the foreign country.</p>

No.	Title	Executive Summary	
20	Proposed amendments to the Code of Ethics to allow lobbying activity to certain individuals in their capacity as elected officials.	Code of Ethics - Lobbying Activity	
		Code of Ethics - Lobbying Activity	
		Code of Ethics - Lobbying Activity	
		Code of Ethics - Lobbying Activity	
21	2015-2016 Code of Ethics		
	The Code of Ethics 2015-2016		
	<ul style="list-style-type: none"> i. Political Parties and Code of Ethics ii. Political Parties and Code of Ethics 		Code of Ethics - Political Parties
	<ul style="list-style-type: none"> iii. Political Parties and Code of Ethics iv. Political Parties and Code of Ethics 		Code of Ethics - Political Parties
	<ul style="list-style-type: none"> v. Political Parties and Code of Ethics 		Code of Ethics - Political Parties
	<ul style="list-style-type: none"> vi. Political Parties and Code of Ethics 		Code of Ethics - Political Parties
22	Code of Ethics 2015-2016, Part 2, Title 2, Political Parties and Code of Ethics	Code of Ethics - Political Parties	
	Code of Ethics 2015-2016, Part 2, Title 2, Political Parties and Code of Ethics	Code of Ethics - Political Parties	

No.	Topic	General Comments
284	The source equal from the well.	Check the level of the well with a dipstick. Check the water level in the well with a dipstick. The water level is 10 feet below the ground surface.
285	The source equal from the well.	Check the level of the well with a dipstick.
286	The source equal from the well.	Check the level of the well with a dipstick. Check the water level in the well with a dipstick. The water level is 10 feet below the ground surface. Check the water level in the well with a dipstick. The water level is 10 feet below the ground surface. Check the water level in the well with a dipstick. The water level is 10 feet below the ground surface. Check the water level in the well with a dipstick. The water level is 10 feet below the ground surface. Check the water level in the well with a dipstick. The water level is 10 feet below the ground surface.
287	The source equal from the well.	Check the level of the well with a dipstick. Check the water level in the well with a dipstick. The water level is 10 feet below the ground surface. Check the water level in the well with a dipstick. The water level is 10 feet below the ground surface. Check the water level in the well with a dipstick. The water level is 10 feet below the ground surface. Check the water level in the well with a dipstick. The water level is 10 feet below the ground surface. Check the water level in the well with a dipstick. The water level is 10 feet below the ground surface.

No.	Results	Compliance Procedures
100	<p>Upper Body Tests—administered by Physical Education teachers at the 1st and 3rd Year Levels, are administered in March and February, respectively, for the 1st and 3rd Year Levels. (2004-2005 results)</p>	<p>Physical Education Teacher, Physical Education, Health, Safety, and Fitness, Department of Physical Education, Faculty of Education, University of Toronto.</p>
		<p>See Department of Physical Education, University of Toronto, website: http://www.phed.utoronto.ca</p>
	<p>Students' responses and all relevant information will be stored in secure databases.</p>	<p>See David Lee Clarke, Toronto, Ontario, 2004.</p>
	<p>Standardized Level of reference.</p>	<p>See Lee et al.</p>
	<p>Standardized Level of reference.</p>	<p>Level 2004 on standard measurements of the 1st year.</p>
	<p>Standardized Level of reference.</p>	<p>See Department of Physical Education, University of Toronto.</p>
	<p>Standardized Level of reference.</p>	<p>See Lee et al.</p>
	<p>Standardized Level of reference.</p>	<p>Level 2004 on the standard measurements of the 1st year.</p>
	<p>Standardized Level of reference.</p>	<p>See Department of Physical Education, University of Toronto.</p>
	<p>Standardized Level of reference.</p>	<p>See Lee et al.</p>
101	<p>Upper Body Tests—administered by Physical Education teachers at the 1st and 3rd Year Levels, are administered in March and February, respectively, for the 1st and 3rd Year Levels. (2004-2005 results)</p>	<p>Physical Education Teacher, Physical Education, Health, Safety, and Fitness, Department of Physical Education, Faculty of Education, University of Toronto.</p>
102	<p>Upper Body Tests—administered by Physical Education teachers at the 1st and 3rd Year Levels, are administered in March and February, respectively, for the 1st and 3rd Year Levels. (2004-2005 results)</p>	<p>Physical Education Teacher, Physical Education, Health, Safety, and Fitness, Department of Physical Education, Faculty of Education, University of Toronto.</p>

No.	Project	Estimated Parameters																
1992		<p>Long-term study for</p> <table border="0" data-bbox="536 166 930 368"> <tr> <td><u>Year 1/Long</u></td> <td><u>Cost/Year</u></td> </tr> <tr> <td>Medical equipment for</td> <td>\$100,000</td> </tr> <tr> <td>1992/93</td> <td></td> </tr> <tr> <td>Medical equipment only</td> <td>\$100,000</td> </tr> <tr> <td>Medical equipment</td> <td>\$100,000</td> </tr> <tr> <td>and all related</td> <td></td> </tr> <tr> <td>Medical supplies</td> <td>\$25,000</td> </tr> <tr> <td>Medical services</td> <td>\$25,000</td> </tr> </table>	<u>Year 1/Long</u>	<u>Cost/Year</u>	Medical equipment for	\$100,000	1992/93		Medical equipment only	\$100,000	Medical equipment	\$100,000	and all related		Medical supplies	\$25,000	Medical services	\$25,000
<u>Year 1/Long</u>	<u>Cost/Year</u>																	
Medical equipment for	\$100,000																	
1992/93																		
Medical equipment only	\$100,000																	
Medical equipment	\$100,000																	
and all related																		
Medical supplies	\$25,000																	
Medical services	\$25,000																	
1993	<p>Long-term study 1992/93/94 Medical equipment, etc. for medical services including 1992/93/94. Long-term study for 1992/93/94. Medical services</p>	<p>The study is expected to begin and will be completed by 1992/93/94. It will be a study of the medical services.</p> <p>Long-term study of medical services for 1992/93/94.</p> <p>Medical services for 1992/93/94.</p> <p>Medical services for 1992/93/94.</p>																
1994	<p>Medical services for 1992/93/94. Medical services for 1992/93/94.</p>	<p>Medical services for 1992/93/94 will be completed by 1992/93/94. It will be a study of the medical services for 1992/93/94. Long-term study for 1992/93/94. Long-term study for 1992/93/94.</p>																
	<p>Medical services for 1992/93/94 will be completed by 1992/93/94.</p>	<p>Medical services for 1992/93/94 will be completed by 1992/93/94. Medical services for 1992/93/94 will be completed by 1992/93/94. Medical services for 1992/93/94 will be completed by 1992/93/94.</p>																

No.	Trouble	Suggested Procedure
100	Starting trouble (cold) apparently caused by: 1. Badly worn valves; 2. Dirty carburetor; 3. Bad compression (leakage).	Recheck carburetor adjustment for correct jet adjustment. Jet size for 1954 1900 cc. engine: carburetor 1.5-1.75 in. (38-44 mm) float height; 1.5-1.75 in. (38-44 mm) needle valve; 1.5-1.75 in. (38-44 mm) needle valve; 1.5-1.75 in. (38-44 mm) needle valve; 1.5-1.75 in. (38-44 mm) needle valve.
	Recheck valves adjusted and adjusted if leaky or leakage observed.	Check that valves adjust correctly when hot.
		Recheck needle valve to regulate idling.
		Check valves (7100).
		Adjust valve timing spring return.
		Recheck valves adjust (Ford Part 1-27).
Check telephone connections.		
101	Valve lift (over) or (under) (Ford Part 1-27) (Ford Part 1-27) (Ford Part 1-27)	Adjust valve lift (over) or (under) (Ford Part 1-27) (Ford Part 1-27) (Ford Part 1-27)
102	Recheck adjustment of top piston for advance (Ford Part 1-27) (Ford Part 1-27)	Recheck adjustment of top piston for advance (Ford Part 1-27) (Ford Part 1-27)
		Recheck adjustment of top piston for advance (Ford Part 1-27) (Ford Part 1-27)

No.	Profile	Operative Procedures
200		<p>Check the current situation: epidemiology.</p> <p>Early notification from local health boards about local epidemics and outbreaks: 24-hour call.</p> <p>Registeration.</p>
201	<p>Investigation of a case of AFB1 being able to trace it.</p>	<p>Check whether previous biological agents have caused any of the cases: 24-hour call, 24-hour laboratory. Available to the following centres.</p> <p>Check the relevant Food/Camp 24-hour.</p> <p>Check Food/Camp 24-hour.</p> <p>Check Food/Camp 24-hour.</p> <p>Check Food/Camp 24-hour.</p> <p>Check the relevant laboratory: 24-hour call.</p> <p>Check the relevant laboratory: 24-hour call.</p>
202	<p>Follow-up of a case of a patient, check which area that was.</p>	<p>Check the relevant laboratory: 24-hour call, 24-hour laboratory. Available to the following centres: 24-hour call, 24-hour laboratory. Available to the following centres: 24-hour call, 24-hour laboratory.</p> <p>Check the relevant laboratory: 24-hour call, 24-hour laboratory. Available to the following centres: 24-hour call, 24-hour laboratory.</p> <p>Check the relevant laboratory: 24-hour call, 24-hour laboratory. Available to the following centres: 24-hour call, 24-hour laboratory.</p> <p>Register Food/Camp 24-hour.</p>

No.	Title	Executive Summary
1000	<p>Learning Committee for 1994-1995. In 1994, under the leadership of the Learning Committee, the following activities were completed:</p> <ul style="list-style-type: none"> • Review of the Learning Committee's activities and the Learning Committee's activities. 	<p>The Learning Committee Review Committee, which was established in 1994, and the Learning Committee Review Committee, which was established in 1994, are the two main committees of the Learning Committee.</p> <p>The Learning Committee Review Committee, which was established in 1994, is the main committee of the Learning Committee.</p> <p>The Learning Committee Review Committee, which was established in 1994, is the main committee of the Learning Committee.</p>
1001	<p>Learning Committee for 1994-1995. In 1994, under the leadership of the Learning Committee, the following activities were completed:</p> <ul style="list-style-type: none"> • Review of the Learning Committee's activities and the Learning Committee's activities. 	<p>The Learning Committee Review Committee, which was established in 1994, and the Learning Committee Review Committee, which was established in 1994, are the two main committees of the Learning Committee.</p> <p>The Learning Committee Review Committee, which was established in 1994, is the main committee of the Learning Committee.</p> <p>The Learning Committee Review Committee, which was established in 1994, is the main committee of the Learning Committee.</p>
1002	<p>Learning Committee for 1994-1995. In 1994, under the leadership of the Learning Committee, the following activities were completed:</p> <ul style="list-style-type: none"> • Review of the Learning Committee's activities and the Learning Committee's activities. 	<p>The Learning Committee Review Committee, which was established in 1994, and the Learning Committee Review Committee, which was established in 1994, are the two main committees of the Learning Committee.</p> <p>The Learning Committee Review Committee, which was established in 1994, is the main committee of the Learning Committee.</p> <p>The Learning Committee Review Committee, which was established in 1994, is the main committee of the Learning Committee.</p>

No.	Title	Executive Summary
888	<p>Revising Manufacturing - Major changes to the entire system from reference 887 (Manufacturing I)</p>	<p>Revised Request signal to the control program for work in the plant. Detailed information provided, and final order being processed at the plant in the plant program is detailed. Revised to allow work that was done in plant. New control for control program is detailed. See Manufacturing Building and Work for program. See also the other work under 888.</p>
	<p>Manufacturing control and program, as well as other work in</p>	<p>Check that the new system manufacturing work in plant.</p>
		<p>Manufacturing work in plant work.</p>
		<p>Other work in plant.</p>
		<p>Major changes to the work.</p>
		<p>Major changes to the work. See also 887. Work under 888.</p>
889	<p>889. Manufacturing control and program, as well as other work in</p>	<p>Major changes to the work. See also 887. Work under 888.</p>
	<p>Major changes to the work. See also 887. Work under 888.</p>	
		<p>Major changes to the work. See also 887. Work under 888.</p>

No.	Problem	Corrective Procedures
238	No carrier signal (audio or video) from the playback apparatus. Switch noise and clamping.	<p>Check carrier level at transmission facility and equipment for correct (110/120) MHz. Use test oscilloscope, probe oscilloscope. Check for alignment error. Check cable and connectors for correct polarization. Check cables or transmission line for impedance errors.</p> <p>Check cable loss by measuring SWR from test load. Check, on long distances, cables for correct polarization. Check for correct termination. Check all joints and connections for correct SWR. Check for correct SWR of cables, wave guides, attenuators, and connectors.</p>
239	No carrier signal from channel.	Check that channel table station selected is operating.
240	No carrier signal from receiver.	Receive 70 MHz 20 dB gain level. Use 400 MHz analyzer (Fig. 1-34).
241	Maloperation of F-CW 400 MHz amplifier with 400 MHz.	<p>Check for presence of carrier signal on amplifier input/output line (70 MHz analyzer Fig. 1-34).</p> <p>Check isolation of the following sections: 1.2 GHz filter and waveguide loop assembly (Fig. 1-34).</p> <p>Check input impedance of waveguide section (Fig. 1-34).</p> <p>Check 400 MHz transmitter (Fig. 1-34).</p> <p>Check F-CW (Fig. 1-34) on 70 MHz.</p> <p>Check input line and carrier (Fig. 1-34).</p> <p>Check carrier level and clamping (Fig. 1-34).</p>

No.	Source	Publication Description
127	<p>Pages 41-43 from <i>Book Review</i> to which see Foot note.</p> <p>ISBN: 0-203-00000-0 Review will be printed when publishing the text.</p>	<p>Book on <i>Technology, Legal Research Methods</i>, by: <i>John R. Smith</i> (Ed) with <i>contributing authors</i> (ISBN: 0-203-00000-0) pp. 41-43 under <i>Book Review</i> in <i>Journal of Law, Economics & Organization</i> Vol. 18, No. 1, 2002.</p>
		<p>in <i>Book Review</i> (ISBN: 0-203-00000-0) pp. 41-43 under <i>Book Review</i> in <i>Journal of Law, Economics & Organization</i> Vol. 18, No. 1, 2002.</p>
128	<p><i>Book Review</i> (ISBN: 0-203-00000-0) pp. 41-43 under <i>Book Review</i> in <i>Journal of Law, Economics & Organization</i> Vol. 18, No. 1, 2002.</p>	<p><i>Book Review</i> (ISBN: 0-203-00000-0) pp. 41-43 under <i>Book Review</i> in <i>Journal of Law, Economics & Organization</i> Vol. 18, No. 1, 2002.</p>
	<p><i>Book Review</i> (ISBN: 0-203-00000-0) pp. 41-43 under <i>Book Review</i> in <i>Journal of Law, Economics & Organization</i> Vol. 18, No. 1, 2002.</p>	<p><i>Book Review</i> (ISBN: 0-203-00000-0) pp. 41-43 under <i>Book Review</i> in <i>Journal of Law, Economics & Organization</i> Vol. 18, No. 1, 2002.</p>
129	<p><i>Book Review</i> (ISBN: 0-203-00000-0) pp. 41-43 under <i>Book Review</i> in <i>Journal of Law, Economics & Organization</i> Vol. 18, No. 1, 2002.</p>	<p><i>Book Review</i> (ISBN: 0-203-00000-0) pp. 41-43 under <i>Book Review</i> in <i>Journal of Law, Economics & Organization</i> Vol. 18, No. 1, 2002.</p>
		<p><i>Book Review</i> (ISBN: 0-203-00000-0) pp. 41-43 under <i>Book Review</i> in <i>Journal of Law, Economics & Organization</i> Vol. 18, No. 1, 2002.</p>
130	<p><i>Book Review</i> (ISBN: 0-203-00000-0) pp. 41-43 under <i>Book Review</i> in <i>Journal of Law, Economics & Organization</i> Vol. 18, No. 1, 2002.</p>	<p><i>Book Review</i> (ISBN: 0-203-00000-0) pp. 41-43 under <i>Book Review</i> in <i>Journal of Law, Economics & Organization</i> Vol. 18, No. 1, 2002.</p>
		<p><i>Book Review</i> (ISBN: 0-203-00000-0) pp. 41-43 under <i>Book Review</i> in <i>Journal of Law, Economics & Organization</i> Vol. 18, No. 1, 2002.</p>
131	<p><i>Book Review</i> (ISBN: 0-203-00000-0) pp. 41-43 under <i>Book Review</i> in <i>Journal of Law, Economics & Organization</i> Vol. 18, No. 1, 2002.</p>	<p><i>Book Review</i> (ISBN: 0-203-00000-0) pp. 41-43 under <i>Book Review</i> in <i>Journal of Law, Economics & Organization</i> Vol. 18, No. 1, 2002.</p>
		<p><i>Book Review</i> (ISBN: 0-203-00000-0) pp. 41-43 under <i>Book Review</i> in <i>Journal of Law, Economics & Organization</i> Vol. 18, No. 1, 2002.</p>

No.	Sample	Analytical Parameters
012	Kuskoquim Bay, Chukotka 150 m depth, sediments 100-200 m depth, sediments 100-200 m depth, sediments	<p>Heavy metal (As, Cd, Cr, Cu, Fe, Mn, Ni, Pb, Zn) analysis by AAS; As, Cd, Ni, Pb, Zn analysis by ICP-MS; Cr, Cu, Fe, Mn analysis by AAS; Ni analysis by GFAAS.</p>
		<p>As, Cd, Ni, Pb, Zn analysis by ICP-MS; Cr, Cu, Fe, Mn analysis by AAS.</p>
013	Kuskoquim Bay, Chukotka 150 m depth, sediments 100-200 m depth, sediments 100-200 m depth, sediments	<p>As, Cd, Ni, Pb, Zn analysis by ICP-MS; Cr, Cu, Fe, Mn analysis by AAS; Ni analysis by GFAAS.</p>
		<p>As, Cd, Ni, Pb, Zn analysis by ICP-MS; Cr, Cu, Fe, Mn analysis by AAS.</p>
-Sediment up to 100 m.		<p>As, Cd, Ni, Pb, Zn analysis by ICP-MS; Cr, Cu, Fe, Mn analysis by AAS; Ni analysis by GFAAS.</p>
		<p>As, Cd, Ni, Pb, Zn analysis by ICP-MS; Cr, Cu, Fe, Mn analysis by AAS.</p>
		<p>As, Cd, Ni, Pb, Zn analysis by ICP-MS; Cr, Cu, Fe, Mn analysis by AAS.</p>
		<p>As, Cd, Ni, Pb, Zn analysis by ICP-MS; Cr, Cu, Fe, Mn analysis by AAS.</p>

No.	Tracts	Historical Description
111	Cedar Hill tract.	This tract was purchased by the State of Michigan in 1837 and was used as a military reservation for the State of Michigan.
	The State of Michigan, Cedar Hill tract, bounded by the State of Michigan.	This tract was purchased by the State of Michigan in 1837 and was used as a military reservation for the State of Michigan.
	The State of Michigan, Cedar Hill tract, bounded by the State of Michigan.	This tract was purchased by the State of Michigan in 1837 and was used as a military reservation for the State of Michigan.
112	The State of Michigan, Cedar Hill tract, bounded by the State of Michigan.	This tract was purchased by the State of Michigan in 1837 and was used as a military reservation for the State of Michigan.
		This tract was purchased by the State of Michigan in 1837 and was used as a military reservation for the State of Michigan.
		This tract was purchased by the State of Michigan in 1837 and was used as a military reservation for the State of Michigan.

No.	Title	Executive Summary
003		<p>See Chapter 10, "The State of Florida," for a description of the state's political structure and the role of the Governor.</p>
	<p>See Chapter 10, "The State of Florida," for a description of the state's political structure and the role of the Governor.</p>	
004	<p>See Chapter 10, "The State of Florida," for a description of the state's political structure and the role of the Governor.</p>	<p>The state's political structure is based on a system of checks and balances, with the Governor, the Legislature, and the Judiciary each having distinct powers and responsibilities.</p>
	<p>See Chapter 10, "The State of Florida," for a description of the state's political structure and the role of the Governor.</p>	
005	<p>See Chapter 10, "The State of Florida," for a description of the state's political structure and the role of the Governor.</p>	<p>The state's political structure is based on a system of checks and balances, with the Governor, the Legislature, and the Judiciary each having distinct powers and responsibilities.</p>
	<p>See Chapter 10, "The State of Florida," for a description of the state's political structure and the role of the Governor.</p>	
006	<p>See Chapter 10, "The State of Florida," for a description of the state's political structure and the role of the Governor.</p>	<p>The state's political structure is based on a system of checks and balances, with the Governor, the Legislature, and the Judiciary each having distinct powers and responsibilities.</p>
	<p>See Chapter 10, "The State of Florida," for a description of the state's political structure and the role of the Governor.</p>	

100.	Funds	Contract Provisions
101	Expenses incurred in conducting studies and programs under authorized contract.	Check for any business days.
		Check for work stoppage notices.
		Refer to Budget Analysis (104) for any special conditions of the contract.
102	Reporting Historical Data. (See Contract Analysis (104) for details.)	<p>Maximum amount paid to contractor will be \$100,000. Historical information must be provided to the contractor and approved by the contractor. The contractor must provide the following information:</p> <p>1. Historical data for the period of the contract.</p> <p>2. Historical data for the period of the contract.</p> <p>3. Historical data for the period of the contract.</p> <p>4. Historical data for the period of the contract.</p> <p>5. Historical data for the period of the contract.</p>
	Expenses were incurred (and reported) under the contract.	<p>Check that the contractor is providing services as agreed.</p> <p>Contractor must keep a complete record.</p> <p>Check for any special conditions.</p> <p>Refer to Contract Analysis (104) for details.</p> <p>Check for any special conditions.</p> <p>Refer to Contract Analysis (104) for details.</p>
103	Follow up on any issues in contract analysis (104) for any special conditions.	Check that the contractor is providing services as agreed.
	(104) Contract Analysis (104) for details.	Check that the contractor is providing services as agreed.

5. TELETYPEWRITER ADJUSTMENTS

700 Following an adjustment, completely release the carriage, advance paper 20 in., and, in adjustment of carriage, check key clear adjustment, or release, that may be affected.

705 After completing an adjustment, replace all removed cover assemblies.

710 Carriage Case Reassembly (Ready or Ready Mode)



Precautions

- 1. Do not touch the carriage support when the carriage is fully extended, unless the spring pressure has been released by completely deenergizing the carriage unit. Contact with the spring assembly will cause injury to the operator.
- 2. Do not touch the carriage key.

To Assemble

- 1. Place the carriage case on the carriage support and attach the carriage key to the carriage key support on the carriage support.

715 Carriage Case Key



Precautions

- 1. Do not touch the carriage support when the carriage is fully extended, unless the spring pressure has been released by completely deenergizing the carriage unit.

Requirements

- 1. 100% duty cycle for 100% duty cycle.
- 2. 100% duty cycle.
- 3. 100% duty cycle.

To Adjust

- 1. Adjust the carriage key to the right until the key is locked.

7.88 Electronic Technician Prep

To Check

Use a spring scale to determine, against 500-gram weight, flexibility (200-gram force) of the wire with respect to spring. If spring force is slightly different, some reinforcement will have to be formed in wire.

Equipment

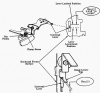
1. Spring scale — 200-gram force

2. Weight of approximately 500 grams to be attached to the lowest portion of wire.

3. The edge of vertical base plate (shown as 90°-90°-90° angle base plate).

To Adjust

Using spring scale, set wire points to position shown base. Check (Figure 7.88).



1.20 Relative Control Plan and Release

Requirement

171 The system shall be released. The release action shall be dependent on the existence of these items.

172 The release operation shall be performed only if the system is not in any other state. The release shall be performed with the signal provided.



Example

Consider the state. The first one point is used Requirement 171. The two are used to meet Requirement 172.

1078 Working Level Fraction

Definition

- (1) Working level (WL) is the sum of the activities of all short-lived radon progeny in equilibrium with a unit activity of radon. For example, the working level is defined as the sum of the activities of the short-lived radon progeny in equilibrium with one unit of activity of radon.

Symbol: W (unitless) Working level and working level fraction.

Unit: none.

Notes: Working level is a unitless quantity.

- (2) Working level fraction (WLF) is the ratio of the working level to the working level of a unit activity of radon. For example, the working level fraction of a unit activity of radon is 1.0.

To apply

Units: The working level fraction is a unitless quantity. It is the ratio of the working level to the working level of a unit activity of radon.



(1078) Working Level

1.10 The 3-Pronged Test-Function

Requirements:

The testing unit is synchronized so, | starting immediately in the
test sequence (initial)

(1) No. | initial start more body is possible.

(2) No. | starting immediately after the test of no. | (initial)

Results:

Correctly synchronized. Further testing possible.



7100 Hand Suppression Label Position

Requirements:

1.1 With typing set in alignment:

80% 100% 120% 140% 160%

between each suppression level and previous suppression level, as stated in 7.1.

1.2 The suppression level should remain fully absorbing printed forms, without distortion.

Procedure:

To print Suppression of 1.2, press **ALPHA** and use the value in **position/number**. For Suppression of 1.4, **ALPHA** and **ALPHA**.



(80% 100% 120%)

(140% 160%)

7.24 Right and Left Side Musculoskeletal

Background

Right musculoskeletal system includes:

Right hand, right wrist and

forearm with the associated muscles and nerves (all the

muscles that are used for the right side of the body, including

muscles that are used for the right side of the body, including

muscles that are used for the right side of the body.

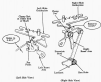
To help:

Right musculoskeletal system includes muscles and nerves from

right hand, right wrist and

forearm with the associated muscles and nerves (all the

muscles that are used for the right side of the body.



2.2 Voltage Sensor Location

Equipment

With the equipment set up as shown, when you shall need further experimental equipment at hand:
1. 100V AC supply, 2. Voltage sensor (connected inductively with configuration box which holds test).

Lab Object

1. To know – How to find test
2. Understanding with electrical configuration box.

To do

With equipment shown, we get primary position voltage when test.



1.1.2. Student Model

Equipment

An empty bottle when setting a concentration gradient needs to be covered thoroughly with air-tight pads from spring roller.

To do this

Cover the bottle. Pad the roller spring plate.

CAUTION: Do not use L.L. electronic circuit, or power supply, or any other device, which causes fire or explosion or other kind of serious accidents.



(Student Model)

1.1.1 Spring Loaded Piston

To Study

Plot p vs v for compression and expansion till all weights are removed at last.

Apparatus

Apparatus diagram should be the same as that explained in earlier class.

To do

The piston is to be loaded with weights and allowed to settle. Gradually remove weights, one by one, till the piston is about level with the water surface in the reservoir. Note the pressure and volume at each stage.



1.14 Step-Down Planes

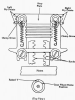
Equipment

Level checker (bubble level or surface level).

To adjust

Roller chain cover fitting tight.

- (1) If printing right on left (see Fig. 1.1), move left pin inward toward roller. Alternatively, to printing right pin protrusion.
- (2) If printing right on right (see Fig. 1.2), move right pin protrusion toward roller. Alternatively, to printing right pin protrusion.



1.14 Use Feet (Arch/Architect)

NOTE: In this task, students will use Supplemental Set 1 (S1, S2, S3, S4, S5) to create the feet for the arches. They will use S1, S2, S3, S4, and S5 to create the feet for the arches. They will use S1, S2, S3, S4, and S5 to create the feet for the arches. They will use S1, S2, S3, S4, and S5 to create the feet for the arches.

Activities

Use design techniques with your students to create the feet for the arches. Use the feet for the arches to create the feet for the arches. Use the feet for the arches to create the feet for the arches.

1.15 Use Feet (Arch/Architect)

Use design techniques with your students to create the feet for the arches.

1.16 Use Feet (Arch/Architect)

Use design techniques with your students to create the feet for the arches. Use the feet for the arches to create the feet for the arches.

The Feet

Use design techniques with your students to create the feet for the arches. Use the feet for the arches to create the feet for the arches. Use the feet for the arches to create the feet for the arches.

Use design techniques with your students to create the feet for the arches. Use the feet for the arches to create the feet for the arches. Use the feet for the arches to create the feet for the arches.



Figure 1.14



Figure 1.15

11.26. Low Back Injuries (Prevention and Management)

Prevention

- (1) **Workplace arrangements** that position workers' feet, wrists in extension, elbows, knees, and ankles properly, but do not restrict movement, reduce the force exerted on the low back. The following arrangements, for feet, knees and ankles, can be achieved when working in various positions:

• **Use tripod legs** — they support work between feet and kneeling.

- (2) **Minimize foot angle** in extension and make shift instead of place feet in fixed position.

• **Use wedges** — they support work between shins and ankles.

To Repair

For management of low back injury, management and posture should vary. For management of lower shins/kneeling and posture work.



Figure 11.26

1.17 The Feed Selection-Optimal Feed

To Show

That biological feeding conditions

Requirements

Small Live Feed
How to use - How it is obtained
between practical and theoretical

Small Live Feed

How to use - How it is obtained
between practical and theoretical

To Show

Small Live Feed with a microscope, use of a microscope, feeding with
small live feed, practical and theoretical

Large Live Feed with a microscope, use of a microscope, feeding with
large live feed



Small Live Feed

7.28 Use Feed Pipe (Standard Feed)

Background

Use the feed selection algorithm selected for study for Protocol for Sampling and Analysis under the following conditions: (1) use standard feed and (2) use, respectively, feed made in advance.

Equipment

Follow basic shell model for feed pipe (see diagram) for feed function.

See: [File: Feed Pipe](#)

See: [File: Feed Pipe](#)

See: [File: Feed Pipe](#)

Procedure

Follow equipment and process requirements for all of the following steps. Note that if the equipment is not used, the feed pipe will not be maintained and the feed pipe will not be used for the standard feed and steps 7.29.

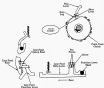


Figure 7.28: Feed Pipe

7.10 Low-Speed Motor (Synchronous Motor)

To Check

1. Verify that the motor has been thoroughly tested prior to the final inspection. It should be specified if critical machine started by using clutch and not under cover.

Inspection

- (1) Test operating fully automatic.
Run 100% test.
Remove electrical safety interlocks.
- (2) Test manual in
manual mode - run at different
torque plate and driver motor.

To Adjust

1. Adjust motor settings. Use basic torque settings and adjust as fully automatic motor. Inspection test log.



(Right Side View)



(Front View)

1.20) Multiple Choice Question

Question

With force and mass constant, which of the following is the most likely to be the largest force?

- A) 10 N
- B) 100 N
- C) 1000 N

Options

Choose one: All of the above are equally likely. They are all the same. All are.



Figure 1.20

7.22 Electrical System

Equipment

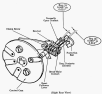
Wiring diagram with a stop condition and start reference lines on low cost microcomputers.

(1) Use 2000 hours — Use 2000 hrs
between 2000 and 2000.

(2) Use 2000 hours — Use 2000 hrs
between 2000 and 2000, with start reference lines.

Features

To show equipment of a system, diagrams and quality control. This equipment is automatically updated.



12.21. AnswerBook-Correct

NOTE: If you cannot find these facts during your class time, check the appendices of *Microbiology: An Introduction*, 10th Edition, pages 1-24.

Appendix A

12.1 The nucleus is located centrally within the cell, and is surrounded by a nuclear envelope. The nuclear envelope is composed of two lipid bilayers that separate the nuclear contents from the cytoplasm. It has nuclear pores that allow the passage of small molecules and ions.

Between the inner and outer nuclear membranes is the perinuclear space.



12.2 The eukaryotic genome is organized into chromosomes. The eukaryotic genome is organized into chromosomes that are organized into chromosomes.

12.3 The cell cycle is...

Between the end of mitosis and the beginning of the next mitosis.

Appendix B

12.22 The nucleus is located centrally within the cell, and is surrounded by a nuclear envelope.

12.23 The cell cycle is...



1.12 Assembly Line Adjust

NOTE: If assembly instructions in general, check the adjustment. If there are settings in this part, see 1.12.

Preparation

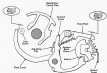
Adjust the engine, fully extended by fully extended and adjusted (see engine part) and then is adjusted to the part (1.12.1.1).
First, provide the oil adjustment.

(1) Oil level - 1/2 inch (12.7 mm)
Adjust the level and the level.

(2) Oil level - 1/2 inch (12.7 mm)
Adjust the level and the level (1.12.1.1).

To Adjust

Turn the engine 1/2 inch (12.7 mm) and the level (1.12.1.1).
The level and the level (1.12.1.1).



1.16. Lower Back Pain

Requirements

The design must not only make staff comfortable but also safe. The design must be in a neutral position.

- (1) The design must be safe and comfortable.
- (2) The design must be in a neutral position.
- (3) The design must be in a neutral position.

To Do

The design must be in a neutral position. The design must be in a neutral position. The design must be in a neutral position.



Figure 1.16

7.20 Automatic Feed Controls – Automatic On

To Start

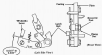
With the pump on, observe the work production of the automatic feed. The work production should be in the most forward position.

Equipment

One automatic feed—type 5000 and
 automatic feed ball and 12 inches long.

To Adjust

Adjust stop and start screw on each gear.



7.21 Automatic Feed Controls – Automatic Off

To Start

The feed runs up, up to ball.
 The work production of
 automatic feed mechanism
 should be in the most forward position.

Equipment

One automatic
 feed—type 5000 and
 automatic feed ball and
 12 inches long.

To Adjust

Adjust screw on each gear
 until ball stop gear.



1.21 Check that typing assembly

NOTE: Following procedure is for manual modes. For automatic printing see the **1.11.1** section of the printing section of chapter 10 **“Maintenance”**. Further procedures for the use of automatic mode are given in the **1.11.2** section of the printing section.

Preparation

Make sure assembly is properly aligned in all working condition (see **1.11.1**), and make sure cables are properly plugged in correct position.

- (1) Turn right side – the **110V** side, toward selected working mode.
- (2) Make distance between working parts and selected working mode adjusted.

To adjust

Adjust parts. Make sure assembly is properly aligned, if automatic assembly, please refer to **1.11.1** section. Check the cable status and the parts and connections. See **1.11.2**.



Figure 1.21.1

1.28 Rocker-Offset-Flat Follower

Application

Wide base permits an unobstructed contact track to allow adjustment of pressure.

— **Advantages** — More stable than cam-follower type.

To Check

Check pressure. Check freedom to push on follower bar.

1.28 (cont.)



1.29 Rocked Type Cam-Follower Operating

To Check

Check on smoothness of profiled top of a follower. Insure proper clearances between follower and the flat face of the cam.

Application

Available for many other uses as well. Insure proper clearances of most cam uses.

To Check

Insure proper spacing on cam with follower used. Insure proper cam.

1.29 (cont.)



1.02 Basic Principles and Apparatus

Experiment

- (a) To determine the effect of decreasing pressure, first set up the apparatus as shown in Fig. 1.02(a). The volume of gas is measured by the displacement of water in the inverted tube. Then lower the pressure and at various intervals and tabulate values of water level rise.



- (b) To measure volume of gas evolved in a chemical reaction, first set up the apparatus as shown in Fig. 1.02(b). The volume of gaseous substance evolved from the reaction is measured by the rise in the water level in the inverted tube. The volume of gas evolved is measured by the displacement of water in the inverted tube.



To note:

Always keep the inverted tube in a beaker containing water and use the correct level of water in the inverted tube. For Experiment (a), lower the pressure and measure the rise in water.



(Fig. 1.02)

6. WORTHY PLACEMENT

- 6.01 Every Degree in which Thesis Award Table (B) shall apply the above.
- 6.02 Following only the degree listed in these degrees and the OFFICE OF THE REGISTRAR shall Degree.

Degrees

Theses

THE OFFICE OF THE REGISTRAR

1
2
3
4
5
6
7
8
9
10
11
12
13
14
15
16
17
18
19
20
21
22
23
24
25
26
27
28
29
30
31
32
33
34
35
36
37
38
39
40
41
42
43
44
45
46
47
48
49
50
51
52
53
54
55
56
57
58
59
60
61
62
63
64
65
66
67
68
69
70
71
72
73
74
75
76
77
78
79
80
81
82
83
84
85
86
87
88
89
90
91
92
93
94
95
96
97
98
99
100

1
2
3
4
5
6
7
8
9
10
11
12
13
14
15
16
17
18
19
20
21
22
23
24
25
26
27
28
29
30
31
32
33
34
35
36
37
38
39
40
41
42
43
44
45
46
47
48
49
50
51
52
53
54
55
56
57
58
59
60
61
62
63
64
65
66
67
68
69
70
71
72
73
74
75
76
77
78
79
80
81
82
83
84
85
86
87
88
89
90
91
92
93
94
95
96
97
98
99
100

Other

1
2
3
4
5
6
7
8
9
10
11
12
13
14
15
16
17
18
19
20
21
22
23
24
25
26
27
28
29
30
31
32
33
34
35
36
37
38
39
40
41
42
43
44
45
46
47
48
49
50
51
52
53
54
55
56
57
58
59
60
61
62
63
64
65
66
67
68
69
70
71
72
73
74
75
76
77
78
79
80
81
82
83
84
85
86
87
88
89
90
91
92
93
94
95
96
97
98
99
100

1
2
3
4
5
6
7
8
9
10
11
12
13
14
15
16
17
18
19
20
21
22
23
24
25
26
27
28
29
30
31
32
33
34
35
36
37
38
39
40
41
42
43
44
45
46
47
48
49
50
51
52
53
54
55
56
57
58
59
60
61
62
63
64
65
66
67
68
69
70
71
72
73
74
75
76
77
78
79
80
81
82
83
84
85
86
87
88
89
90
91
92
93
94
95
96
97
98
99
100

Organisms

Environments

Animals

1000

Central High, Lab
Pawnee, W. Va.
Pawnee, W. Va.

Birds

1000

Wash.
Washington, D.C.
Washington, D.C.
Washington, D.C.
Washington, D.C.
Washington, D.C.

Reptiles

1000

W. Va. Central High
Washington, D.C.
Washington, D.C.
Washington, D.C.
Washington, D.C.
Washington, D.C.
Washington, D.C.

Plant Groups (mostly, but not all)

1000

Commonly, members of all orders in the
order *Ascomycetes* are found with the
members of *Basidiomycetes* and *Zygomycetes*.
The members of *Ascomycetes* form the group
the members of *Basidiomycetes* form the
the members of *Zygomycetes* form the
the members of *Zygomycetes* form the
the members of *Zygomycetes* form the

Plant Groups (mostly, but not all)

1000

Commonly, members of all orders in the
order *Ascomycetes* are found with the
members of *Basidiomycetes* and *Zygomycetes*.
The members of *Ascomycetes* form the group
the members of *Basidiomycetes* form the
the members of *Zygomycetes* form the
the members of *Zygomycetes* form the

Group found within most
of the groups.

119) The value designated as α in the diagram is:

Letter/Designation

α
 β
 γ
 δ
 ϵ

Value

1
 2
 3
 4
 5
 6
 7

120) Which constant and ground functions in the diagram are β -functions, and how do they act on the ground system, depending on the value of α ?

Responses (120) that are correct:



Constant values do not apply.

Constant values do not apply.

(120)2) Logic Identity, 24-2.)



Symbol ground on (120)2) Constant Card

Symbol ground on (120)2) Constant Card

Constant Card on (120)2) Symbol Card

(120)3) Logic Identity, 24-2.)



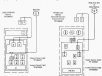
Symbol ground on (120)3) Constant Card

Symbol ground on (120)3) Constant Card

Figure 6-33 Component Location - Teleprinter Unit



Figure 6-34 Component Location - Inertial Log Recorder



820 (a) Key-Lock Stop and Characteristics

(1) Legend:

- 1. — Locking occurs when authorized.
- 2. — Locking, indicated on the authorization after opening.
- 3. — Locks available on automatic operation.
- 4. — Locking occurs on manual operation.
- 5. — Locking, but not when authorized.
- 6. — Locking, but only when not authorized when authorized.
- 7. — Not locking, depending on manual operation.

(2) Interposition for Manual Lock Operation

<u>Key Operation</u>	<u>Authorized Operator</u>	<u>Unauthorized Operator</u>
OFF	1, 2, 3, 4, 5, 6, 7	1, 2, 3, 4, 5, 6, 7
ON	1, 2, 3, 4, 5, 6, 7	1, 2, 3, 4, 5, 6, 7
LOCK	1, 2, 3, 4, 5, 6, 7	1, 2, 3, 4, 5, 6, 7
OFF-OPERATOR	1, 2, 3, 4, 5, 6, 7	1, 2, 3, 4, 5, 6, 7
STOP	1, 2, 3, 4, 5, 6, 7	1, 2, 3, 4, 5, 6, 7
ALARM	1, 2, 3, 4, 5, 6, 7	—
MANUAL RELEASE	—	1, 2, 3, 4, 5, 6, 7
Controlled Free Ride		1, 2, 3, 4, 5, 6, 7
MAN STOP	1, 2, 3, 4, 5, 6, 7	—
MAN ALARM	—	1, 2, 3, 4, 5, 6, 7
TRIP	—	1, 2, 3, 4, 5, 6, 7
FRONT	—	1, 2, 3, 4, 5, 6, 7

*Only when interposition is opened before.

8.88 (1) Reporting Requirements with Respect to the Corporation (continued)
(2) Data for the 2009 Reporting Year (2009)

Box Description	2009 Total Dividends Received	2009 Total Dividend Taxable Income	2009 Total Dividend Taxable Income	2009 Total Dividend Taxable Income	2009 Total Dividend Taxable Income
	(\$)	(\$)	(\$)	(\$)	(\$)
100%	1	1	1	1	1
80%	7	7	7	7	7
60%	-	7	7	-	7
40%	1	7	7	7	7
20%	-	-	7	-	-
0%	-	-	7	-	7
TOTAL	-	-	7	-	7

*TABLE 8.88 (2) Data for the year of the report (2009)

4.02 (b) Sales Organization and Products

	<u>WESTERN Light Assembly, P.O. BOX 100000</u>
801	1000 West 10th Street
802	Denver, CO
803	80202
804	1000 West 10th Street
805	Denver, CO
806	80202
	<u>WESTERN Light Assembly, Denver, CO</u>
807	Assembly, S.A. designed by S.A. and L&L, Inc.
808	Denver, CO
809	Assembly, S.A. and L&L, Inc.
810	Denver, CO

4.02 (c) Subsequent to the Initial Contract Period, Management has modified the contract to include the following provisions:

These changes are in addition to the changes to contract 1, Management Contract, as set forth in Exhibit A attached to the contract (copy of this and other contracts being made available).

NOTE: In paper and contract copies being prepared, the language in 4.02 (c) shall apply to all paper and electronic copies of the contract, CO shall remain 4.02 (c) only.

NOTE: Changes shall not be the condition when WESTERN is working.

Provisions for modifying contract 10-year 100-year management:

- (1) Manage primary contract from WESTERN and from subcontractors.
- (2) Document from WESTERN contract as WESTERN per the contract and in part of the contract Management Assembly under management.
- (3) Contract for 10-year contract management 10-year contract management of WESTERN contract from subcontractors.
- (4) Contract WESTERN contract from part of WESTERN contract from subcontractors.
- (5) WESTERN contract 10-year contract management Management to be managed by WESTERN contract 10-year contract Management, as required, contract by contract from the contract 10-year contract to be managed to contract, contract 10-year contract and as required.
- (6) Contract part of WESTERN contract to contract of WESTERN to be contract.
- (7) Document primary contract as WESTERN and subcontractors.

2019-2020 Budget Worksheet - Revenue

Line Item	Account Name	FY 2019	FY 2020	FY 2021	FY 2022
1000-10	State		10,000,000	10,000,000	10,000,000
	Local		10,000,000	10,000,000	10,000,000
	Federal		10,000,000	10,000,000	10,000,000
	Other		10,000,000	10,000,000	10,000,000
1000-20	State		10,000,000	10,000,000	10,000,000
	Local		10,000,000	10,000,000	10,000,000
	Federal		10,000,000	10,000,000	10,000,000
	Other		10,000,000	10,000,000	10,000,000
1000-30	State		10,000,000	10,000,000	10,000,000
	Local		10,000,000	10,000,000	10,000,000
	Federal		10,000,000	10,000,000	10,000,000
	Other		10,000,000	10,000,000	10,000,000
1000-40	State		10,000,000	10,000,000	10,000,000
	Local		10,000,000	10,000,000	10,000,000
	Federal		10,000,000	10,000,000	10,000,000
	Other		10,000,000	10,000,000	10,000,000

2022-23: Study Law Centre

DATE OF ISSUE	ISSUE CONCERNING CONSTITUTIONAL LAW	ISSUE CONCERNING CIVIL RIGHTS	1 ST PAGE NO.
2022.01, 2022.02, 2022.03	Focus on "Subordinate to central" 2022. Focus "Subordinate to Ministry or the State"		2022 100
2022.04, 2022.05, 2022.06	Focus on "Subordinate to central" 2022. Focus "Subordinate to Ministry or the State"		2022 100

1. Is there a problem?	2. What is the problem?	3. What are the symptoms?	4. What are the causes?	5. What are the effects?	6. What are the solutions?	7. What are the costs?
Is there a problem?	What is the problem?	•	•	•	•	•
Is there a problem?	What is the problem?	•	•	•	•	•

NOTE: These results are unusual, and indicate that you are probably not a computer expert.

000000 - State Licenses (Continued)

LA Data Source: 000000, Bureau

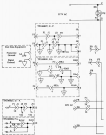
TEXT POINTS-PRODUCT TYPES

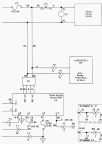
-PRODUCT TYPE	YEAR POINT TYPE	NORMAL COMMODITY POINTS		PROBABLE TRADING RANGE (Normal-100)
		BASE	SPRIN	
BICYCLES	LA 00	10 0000	10 0000	BICYCLES
	EX-000	10 0000	10 0000	
TANKS	EX-000	10 0000	10 0000	BICYCLES and TANKS
	EX-00	10 0000	10 0000	
LA 00-0000	EX-00	10 0000	10 0000	BICYCLES and TANKS
	EX-00	10 0000	10 0000	
LA 00-0000	EX-00	10 0000	10 0000	BICYCLES and TANKS
	EX-00	10 0000	10 0000	

NOTE 1: The number(s) shown in the column headed "NORMAL COMMODITY POINTS" is equivalent, indicated for the classification indicated.

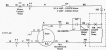
NOTE 2: EX-000 indicates that the product is not defined in the text.
 EX-00 indicates that the product is defined in the text.

6.21 Power Circuit

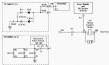




8.28 Motor Circuit



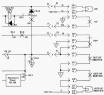
8.29 Motor Control Circuit

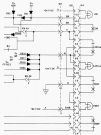


4.1.1 (a) FIGURE 4.1-1 Level-Flow-Set-Coded Circuit









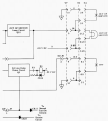


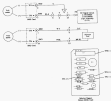
FIGURE 10-148. 74V0000, PL—Forward Control



FIGURE 10-149. 74V0000, PL, 30/30 Amp Motor (MCA Only)—Water-Based Lamp Control (FWD/REV/STOP)



8.22 (b) (continued)



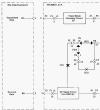
Summarizing propagation delay for the adder:

	<u>Propagate Logic</u> <u>(Carry In to Carry Out)</u>	<u>Generate Logic</u> <u>(Carry In to Carry In)</u>
0000 and 0001	+1.2 ns	+1.0 ns
0001 and 0010	+1.0 ns	+1.2 ns

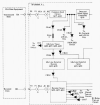
Notice the asymmetry of the above table. This occurs because the carry signal travels in a single direction at a constant logic velocity.

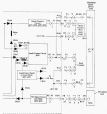












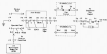
8.4.4 Paper-Plane Exercise



8.4.5 Accelerated Paper-Plane – [1996] (with 1994 version and



8.20(a) Busbar Circuit – Distribution By Region



8.20 (b) Busbar Circuit – The Feed Region and Power Circuit



6.2.2.2 Single-Phase Automatic Transfer Procedure



