

10. **UNCLASSIFIED INFORMATION CONTAINED**

HEREIN

FORM NO.	CLASSIFICATION	DATE	FORM NO.	CLASSIFICATION	DATE
1	SECRET - (When Filled In)	10/1/59	11	SECRET - (When Filled In)	10/1/59
2	SECRET - (When Filled In)	10/1/59	12	SECRET - (When Filled In)	10/1/59
3	SECRET - (When Filled In)	10/1/59	13	SECRET - (When Filled In)	10/1/59
4	SECRET - (When Filled In)	10/1/59	14	SECRET - (When Filled In)	10/1/59
5	SECRET - (When Filled In)	10/1/59	15	SECRET - (When Filled In)	10/1/59
6	SECRET - (When Filled In)	10/1/59	16	SECRET - (When Filled In)	10/1/59
7	SECRET - (When Filled In)	10/1/59	17	SECRET - (When Filled In)	10/1/59
8	SECRET - (When Filled In)	10/1/59	18	SECRET - (When Filled In)	10/1/59
9	SECRET - (When Filled In)	10/1/59	19	SECRET - (When Filled In)	10/1/59
10	SECRET - (When Filled In)	10/1/59	20	SECRET - (When Filled In)	10/1/59
11	SECRET - (When Filled In)	10/1/59	21	SECRET - (When Filled In)	10/1/59
12	SECRET - (When Filled In)	10/1/59	22	SECRET - (When Filled In)	10/1/59
13	SECRET - (When Filled In)	10/1/59	23	SECRET - (When Filled In)	10/1/59
14	SECRET - (When Filled In)	10/1/59	24	SECRET - (When Filled In)	10/1/59
15	SECRET - (When Filled In)	10/1/59	25	SECRET - (When Filled In)	10/1/59
16	SECRET - (When Filled In)	10/1/59	26	SECRET - (When Filled In)	10/1/59
17	SECRET - (When Filled In)	10/1/59	27	SECRET - (When Filled In)	10/1/59
18	SECRET - (When Filled In)	10/1/59	28	SECRET - (When Filled In)	10/1/59
19	SECRET - (When Filled In)	10/1/59	29	SECRET - (When Filled In)	10/1/59
20	SECRET - (When Filled In)	10/1/59	30	SECRET - (When Filled In)	10/1/59



FIGURE 2. 1000+ CASES OF DENGUE FEVER 2002

FIGURE 2. 1000+ CASES OF DENGUE FEVER 2002



FIGURE 1.10. WORLD BANK MAPS (2000)

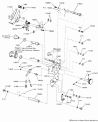


NO.	QTY.	UNIT	REMARKS
1	1	PC	ASSEMBLY OF 1

TABLE 1. THIS DRAWING



FIGURE 4-10 CRANKSHAFT AND CONNECTING ROD



POWER PLANT SYSTEM SCHEMATIC

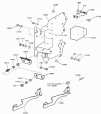


FIGURE 2. PISTON AND CONNECTING ROD ASSEMBLY

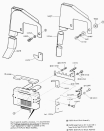


FIGURE 1. MULTI-BLADED VERTICAL TURBINE

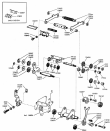


FIGURE 4. Genetic tree relationships.



Figure 10. Spinal cord injury models.



FIGURE 101-20000-0001
 101-20000-0001

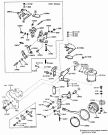


FIGURE 10. FRONT WHEEL ASSEMBLY AND DRIVETRAIN EXPLODED VIEW

1000mm



FIGURE 10

FIGURE 10. (continued) PIPING CONNECTIONS TO THE MAIN SYSTEMS



FIGURE 11

FIGURE 11. PIPING CONNECTIONS TO THE MAIN SYSTEMS

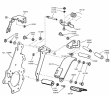


Figure 1. Study area and infrastructure



FIGURE 1. THE MICROSCOPE ASSEMBLY (FROM [1])



FIGURE 1. THE WORLD BIODIVERSITY

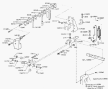


FIGURE 2. THE WORLD BIODIVERSITY DISTRIBUTION BY BIOME

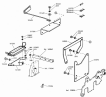


FIGURE 1

FIGURE 1. IDENTIFICATION OF EACH COMPONENT PART

RESEARCH REPORT

Year	Project	Year	Project	Year	Project
1951	Project A	1952	Project B	1953	Project C
1954	Project D	1955	Project E	1956	Project F
1957	Project G	1958	Project H	1959	Project I
1960	Project J	1961	Project K	1962	Project L
1963	Project M	1964	Project N	1965	Project O
1966	Project P	1967	Project Q	1968	Project R
1969	Project S	1970	Project T	1971	Project U
1972	Project V	1973	Project W	1974	Project X
1975	Project Y	1976	Project Z	1977	Project AA
1978	Project AB	1979	Project AC	1980	Project AD
1981	Project AE	1982	Project AF	1983	Project AG
1984	Project AH	1985	Project AI	1986	Project AJ
1987	Project AK	1988	Project AL	1989	Project AM
1990	Project AN	1991	Project AO	1992	Project AP
1993	Project AQ	1994	Project AR	1995	Project AS
1996	Project AT	1997	Project AU	1998	Project AV
1999	Project AW	2000	Project AX	2001	Project AY
2002	Project AZ	2003	Project BA	2004	Project BB
2005	Project BC	2006	Project BD	2007	Project BE
2008	Project BF	2009	Project BG	2010	Project BH
2011	Project BI	2012	Project BJ	2013	Project BK
2014	Project BL	2015	Project BM	2016	Project BN
2017	Project BO	2018	Project BP	2019	Project BQ
2020	Project BR	2021	Project BS	2022	Project BT

Section 1: Introduction

The first section of the document discusses the importance of maintaining accurate records. It highlights the need for consistency and the potential consequences of errors. The text emphasizes that proper record-keeping is essential for the integrity of the data and the reliability of the results. It also mentions the role of the responsible parties in ensuring that all information is correctly documented and stored.

Section 2: Methodology

The methodology section describes the procedures used in the study. It details the selection of participants, the design of the experiments, and the specific techniques employed for data collection and analysis. The authors explain how the chosen methods were intended to address the research objectives and ensure the validity of the findings. This section provides a clear and concise overview of the experimental process.

Section 3: Results

The results section presents the findings of the study. It includes a detailed description of the data collected, the statistical analysis performed, and the interpretation of the results. The authors discuss the significance of the findings and how they relate to the research questions. This section is crucial for understanding the outcomes of the study and the implications for the field.

TECHNICAL EDUCATION

Code	Program	Code	Program	Code	Program
1100	Accounting	1100	Accounting	1100	Accounting
1101	Administrative Management	1101	Administrative Management	1101	Administrative Management
1102	Business Administration	1102	Business Administration	1102	Business Administration
1103	Business Law	1103	Business Law	1103	Business Law
1104	Business Mathematics	1104	Business Mathematics	1104	Business Mathematics
1105	Business Statistics	1105	Business Statistics	1105	Business Statistics
1106	Computer Applications	1106	Computer Applications	1106	Computer Applications
1107	Computer Programming	1107	Computer Programming	1107	Computer Programming
1108	Construction Management	1108	Construction Management	1108	Construction Management
1109	Construction Technology	1109	Construction Technology	1109	Construction Technology
1110	Electronics Technology	1110	Electronics Technology	1110	Electronics Technology
1111	Engineering Technology	1111	Engineering Technology	1111	Engineering Technology
1112	Food Service Management	1112	Food Service Management	1112	Food Service Management
1113	Food Service Technology	1113	Food Service Technology	1113	Food Service Technology
1114	Graphic Arts	1114	Graphic Arts	1114	Graphic Arts
1115	Industrial Design	1115	Industrial Design	1115	Industrial Design
1116	Industrial Management	1116	Industrial Management	1116	Industrial Management
1117	Industrial Technology	1117	Industrial Technology	1117	Industrial Technology
1118	Information Systems	1118	Information Systems	1118	Information Systems
1119	Marketing	1119	Marketing	1119	Marketing
1120	Marketing Management	1120	Marketing Management	1120	Marketing Management
1121	Marketing Research	1121	Marketing Research	1121	Marketing Research
1122	Personnel Management	1122	Personnel Management	1122	Personnel Management
1123	Production Management	1123	Production Management	1123	Production Management
1124	Production Technology	1124	Production Technology	1124	Production Technology
1125	Quality Management	1125	Quality Management	1125	Quality Management
1126	Quality Technology	1126	Quality Technology	1126	Quality Technology
1127	Shipping and Warehousing	1127	Shipping and Warehousing	1127	Shipping and Warehousing
1128	Supply Chain Management	1128	Supply Chain Management	1128	Supply Chain Management
1129	Supply Chain Technology	1129	Supply Chain Technology	1129	Supply Chain Technology
1130	Transportation Management	1130	Transportation Management	1130	Transportation Management
1131	Transportation Technology	1131	Transportation Technology	1131	Transportation Technology