

32 TAPE READER

ADJUSTMENTS

CONTENTS	PAGE
1. GENERAL	1
2. BASIC UNIT	5
Clutch Trip Area	
Armature extension (RRA-2)	7
Contact gap (RRA-4)	8
Feed magnet contact spring	9
Magnet core	5
Reader trip lever spring	9
Reader — clutch trip lever (RRA-3)	7
Trip magnet	5
Trip lever overtravel (RRA-1)	6
Trip magnet armature spring	6
Tape Reader Area	
Armature spring	20
Blocking pawl (RRA-7)	14
Blocking pawl spring	13
Contact wires* spring	16
Control (or tape-out) contact wires* (RRA-9/RRA-13)	16
Control detent spring	19
Detent lever (RRA-5)	10
Detent lever spring	10
Feed pawl (RRA-6)	11,12
Latch spring	21
Reader mounting bracket (RRA-11)	22,23
Sensing contact wire spring	19
Sensing pin (RRA-8)	15
Sensing pin spring	15
Start contact wires (RRA-12)	17
Tape lid latch handle (RRA-10)	18
Tape lid spring	18
Tape-out pin spring	20
Tight-tape lever spring	19
Upstop spring	18
3. VARIATIONS TO THE BASIC UNIT	24
Reset and busy switch timing (RRA-14)	24

1. GENERAL

1.01 This section provides adjustment and maintenance information for the Model 32 Tape Reader. It is reissued to include engineering changes. Because this is a general revision, marginal arrows normally used to indicate changes are omitted.

1.02 Location of clearances, position of parts, and point and angle of scale applications are illustrated by line drawings. Tools required to perform adjustments are listed in Section 570-005-800TC.

1.03 The sequence in which the adjustments appear should be followed when a complete readjustment of the tape reader is undertaken. No adjustment should be made without completely understanding the procedure. Read a procedure all the way through before making an adjustment.

Note 1: Check all related adjustments (1.07).

Note 2: Disconnect all power.

1.04 References to left, right, front, rear, etc consider the tape reader to be viewed where the feed wheel faces up and the lid latch is to the viewer's right. References to the clutch trip area consider the armature extension to be facing up with the contact bracket pry points located to the viewer's right.

1.05 When a procedure calls for using pry points or slots to make an adjustment, place a screwdriver between the points or in the slots and pry parts in the proper direction.

1.06 If parts are removed from the tape reader to facilitate making an adjustment, be sure that they are replaced.

Note: Recheck any adjustment that may have been affected by the removal of parts.

1.07 Related adjustments are listed with some of the adjustment text and are primarily intended to aid in troubleshooting the

equipment. As an example, suppose that in searching for a trouble it is discovered that the BLOCKING PAWL (RRA-7) adjustment does not meet its requirement. Under "Related Adjustment," it is indicated that this adjustment is affected by the DETENT LEVER (RRA-5) and FEED PAWL (RRA-6) adjustments. Check these to see if either is the cause of the trouble. Also, note that certain adjustments affect other adjustments. For example, see the DETENT LEVER (RRA-5) adjustment. Note that this adjustment affects the FEED PAWL (RRA-6) and BLOCKING PAWL (RRA-7) adjustments. If the former adjustment is changed, check the latter adjustments.

1.08 The spring tensions specified are indications, not exact values. Therefore, to obtain reliable readings, measure spring tensions with scales placed in the positions shown on line drawings. Springs that do not meet their requirements should be replaced by new ones. Only those springs that directly affect the operation of the tape reader are measured, however, others may be measured indirectly in the process. If this is the case and the requirement is not met, replace the springs one at a time, starting with the indicated spring, until the requirement is satisfied.

Note: Spring tensions may be checked in any sequence.

1.09 Certain adjustments specify that an armature is to be in its attracted position prior to checking a requirement. This refers to an armature's position when it is magnetically attracted to its magnet core. If a separate power supply is not available, the armature can be held attracted by utilizing power normally supplied by the ASR set. This is accomplished with the motor power turned off and the reader trip magnet armature manually energized.

CAUTION: THE TAPE READER FEED MAGNET OPERATES UNDER HIGH VOLTAGE. THIS HIGH VOLTAGE REMAINS FOR ABOUT 10 SECONDS AFTER POWER IS DISCONNECTED.

1.10 When inserting a tape that has originated from the tape punch, into a tape reader, allow some slack in the tape between the punch and the reader. This is done to close the reader tape lid.

Note: Do not place the control lever directly into the FREE position while the tape reader is operating under power. Place the control lever into the STOP position and wait until after the tape reader has stopped before moving it beyond the STOP position and into the FREE position. The FREE

TAPE READER AREA

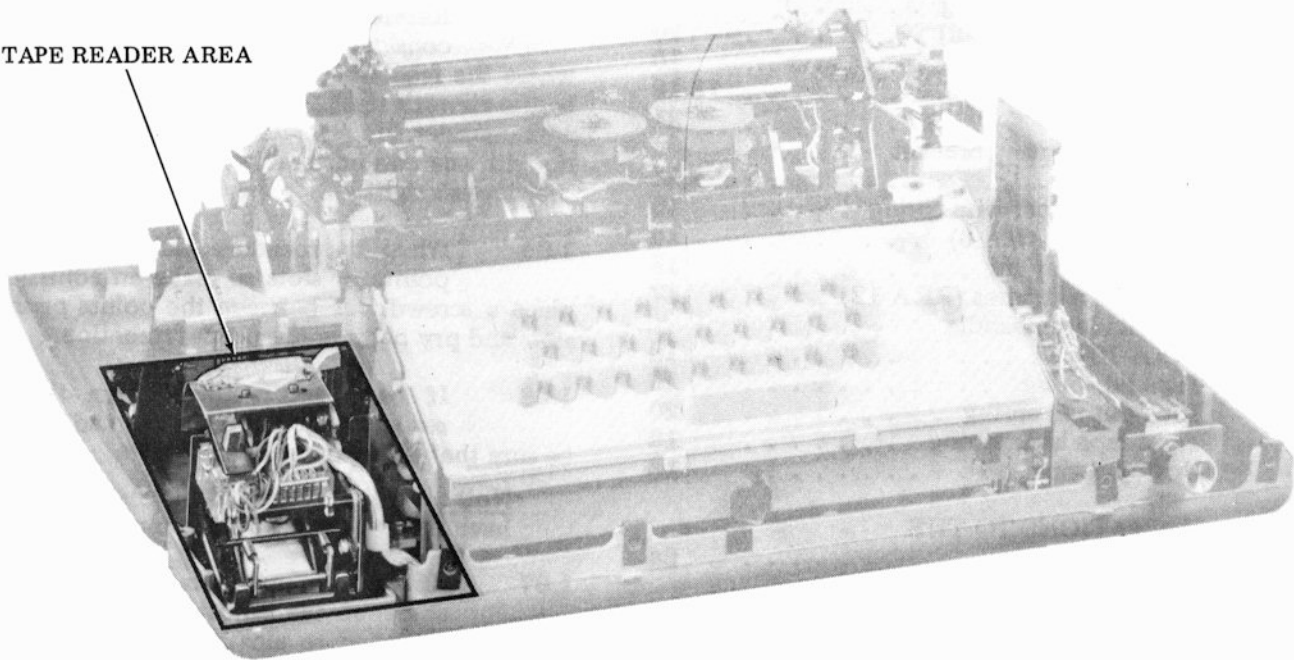


Figure 1 - Tape Reader Area

position of the control lever is used to facilitate the insertion and/or removal of paper tape from the tape reader.

1.11 All adjustments in the "Clutch Trip Area" should be started with the typing unit in the stop condition. It is in the stop condition when the selector armature is in its attracted (frontward) position and all clutches are disengaged.

1.12 To place the typing unit in the stop condition, hold the selector armature in its attracted (frontward) position. Rotate the main shaft clockwise (as viewed from the left) until all clutches are fully disengaged as instructed in 1.13 below.

1.13 When disengaged, a clutch is latched so that a shoe lever is held in its stop position by a trip lever while a corresponding latchlever is seated in a notch of the clutch disc. This allows the clutch shoes to release their tensions on the clutch drum. With all clutches disengaged, the main shaft will turn freely without any clutch shoes dragging.

Note 1: The clutch stop position is that position where a shoe lever contacts a trip lever.

Note 2: If the shaft is turned by hand, a clutch will not fully disengage upon reaching

a stop position. Where an adjustment procedure requires disengagement, rotate the clutch to a stop position, apply a screwdriver to the associated stop-lug, and push the clutch disc in the normal direction of main shaft rotation until the corresponding latch-lever seats in its clutch disc notch.

Note 3: The distributor clutch will not disengage unless the answer-back drum is in its home position, which is the position where the control lever is fully detented into the indent on the answer-back drum.

1.14 There are two areas in which tape reader adjustments and spring tensions are found. As aids in locating the areas, Figures 1 and 2 are provided. They indicate the areas as follows:

<u>Area</u>	<u>Figure</u>
Clutch trip	2
Tape reader	1

1.15 To provide a universal method of adjustment identification, alpha-numeric code combinations (RRA-no.) are used to supplement the adjustment titles.

Note: The alpha-numeric codes are not used for spring adjustments.

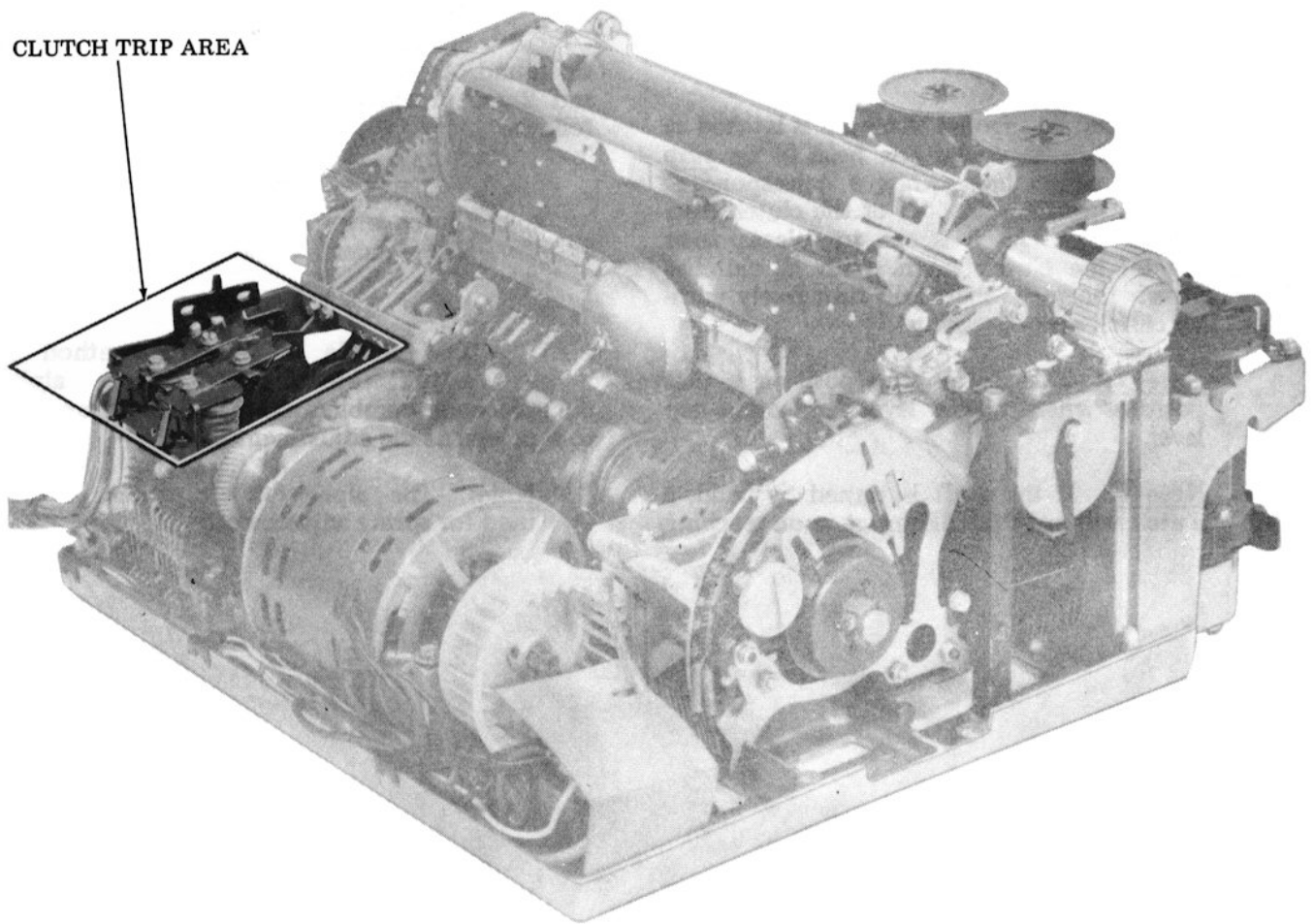


Figure 2 - Clutch Trip Area (Without Reader Feed Magnet Contact Assembly)

2. BASIC UNIT

2.01 Clutch Trip Area

Note: The following positioning of the trip magnet must be correct before proceeding with the adjustments in the reader.

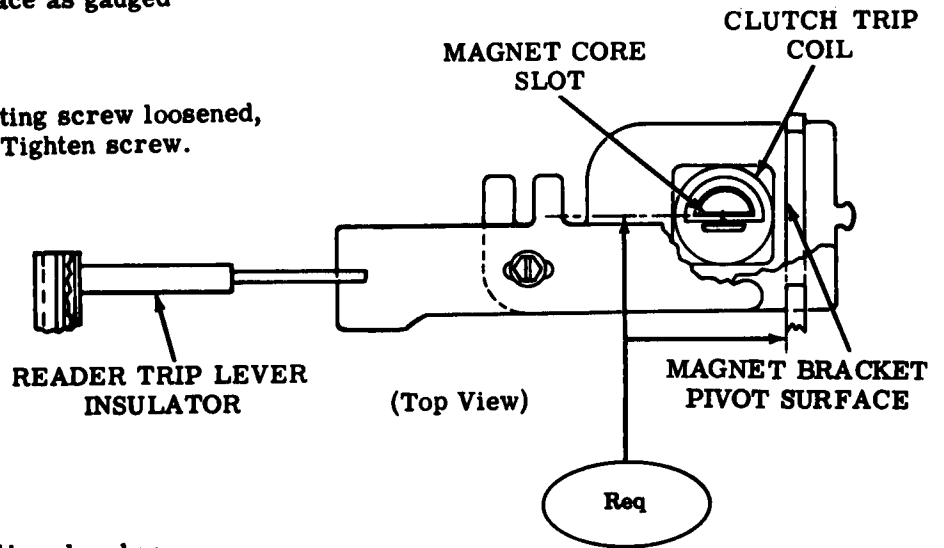
MAGNET CORE

Requirement

Magnet core slot to be perpendicular to magnet bracket pivot surface as gauged by eye.

To Adjust

With clutch trip coil mounting screw loosened, position clutch trip coil. Tighten screw.



TRIP MAGNET

Requirement

Magnet bracket to be positioned on base casting post as far forward and to the left as possible.

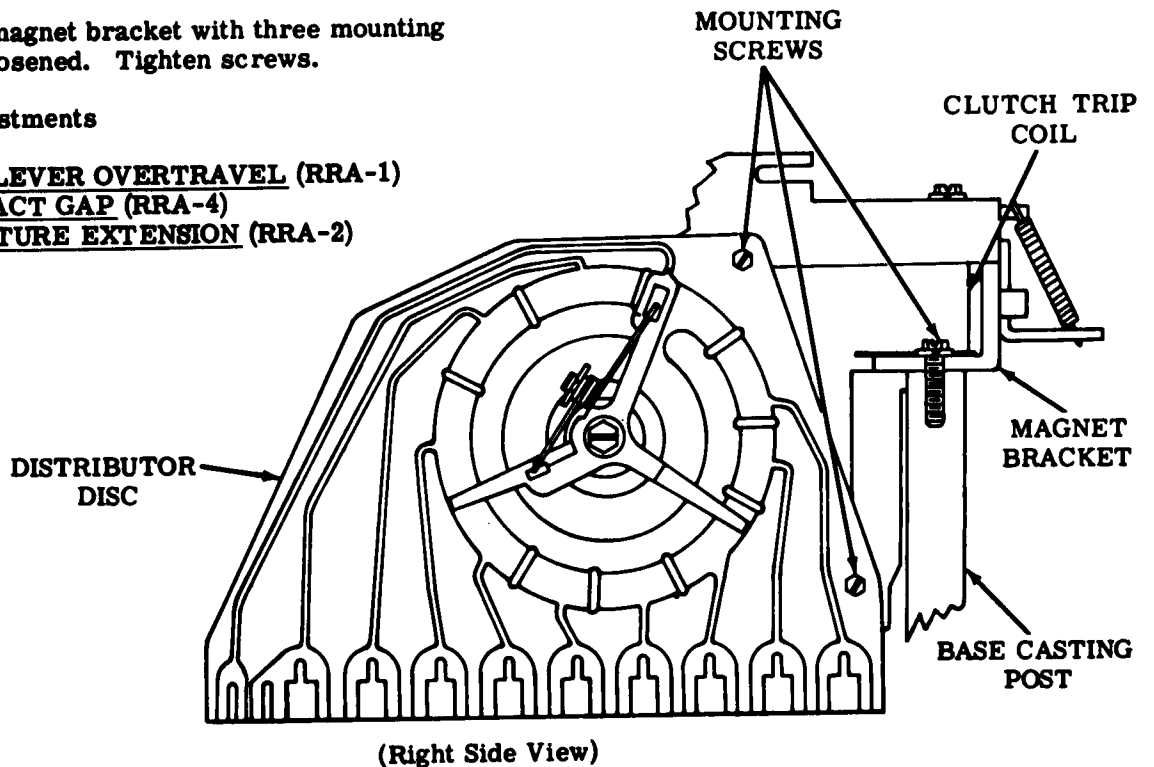
To Adjust

Position magnet bracket with three mounting screws loosened. Tighten screws.

Related Adjustments

Affects

- TRIP LEVER OVERTRAVEL (RRA-1)
- CONTACT GAP (RRA-4)
- ARMATURE EXTENSION (RRA-2)



2.02 Clutch Trip Area (continued)

TRIP LEVER OVERTRAVEL (RRA-1)

To Check

Trip distributor clutch by momentarily holding armature in its attracted position. Rotate main shaft until cam roller is on high part of reader trip lever cam. Take up play in the armature toward the rear and release. If armature does not have guide ears to center the trip lever, position the reader trip lever to the center of the armature extension.

Requirement

Min 0.010 inch --- Max 0.030 inch between the end of armature extension and latching surface of reader trip lever.

To Adjust

With armature extension mounting screw loosened friction tight, position armature extension using pry point. Tighten screw.

Related Adjustment

Affects

CONTACT GAP (RRA-4)

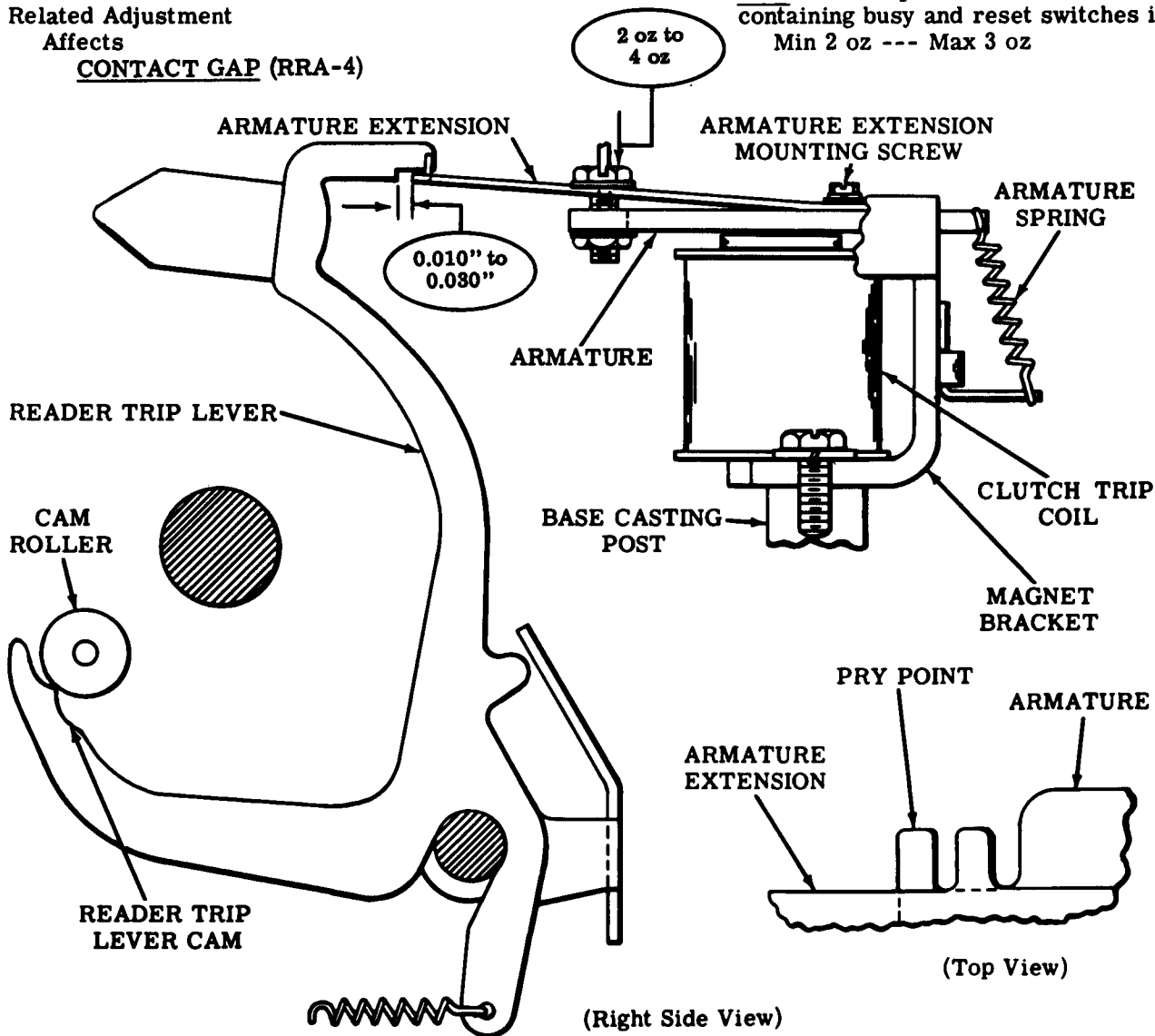
TRIP MAGNET ARMATURE SPRING

Requirement

With armature in its unattracted position and cam roller on high part of reader trip lever cam

Min 2 oz --- Max 4 oz to start armature moving.

Note: The requirement for readers containing busy and reset switches is Min 2 oz --- Max 3 oz



2.03 Clutch Trip Area (continued)

ARMATURE EXTENSION (RRA-2)

To Check

Place typing unit in stop condition. Hold armature in attracted position and rotate main shaft until a clearance of

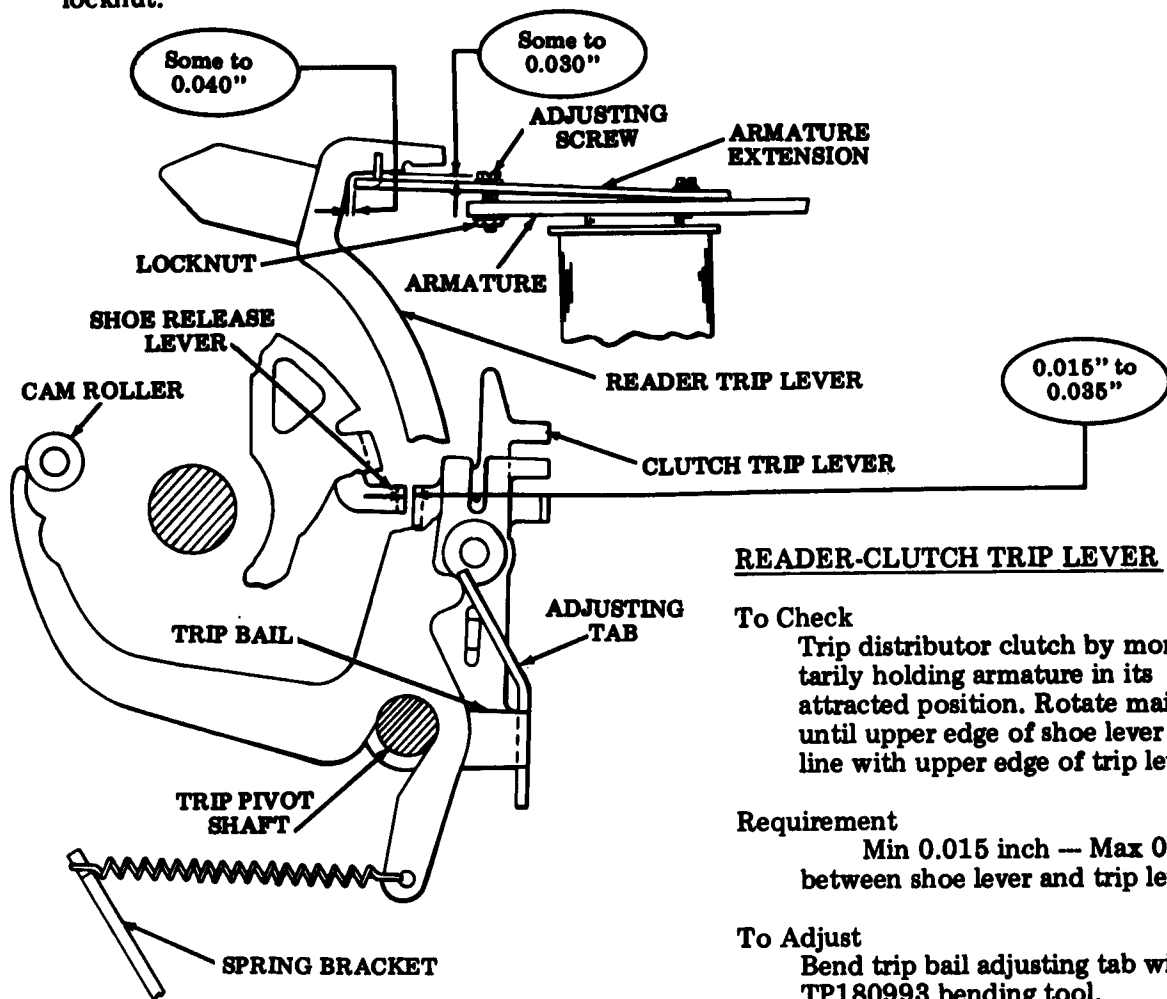
Min Some — Max 0.040 inch exists between end of armature extension and reader trip lever.

Requirement

Min Some — Max 0.030 inch between the armature extension and reader trip lever at its closest point.

To Adjust

Loosen adjusting screw and locknut. Position armature extension. Tighten adjusting screw and locknut.



(Right Side View)

READER-CLUTCH TRIP LEVER (RRA-3)

To Check

Trip distributor clutch by momentarily holding armature in its attracted position. Rotate main shaft until upper edge of shoe lever is in line with upper edge of trip lever.

Requirement

Min 0.015 inch — Max 0.035 inch between shoe lever and trip lever.

To Adjust

Bend trip bail adjusting tab with TP180993 bending tool.

Note: Keep plane of adjusting tab parallel to axis of trip pivot shaft.

Related Adjustment

Affects

TRIP LEVER ENGAGEMENT (KBA-8) in Section 574-172-700TC.

2.04 Clutch Trip Area (continued)

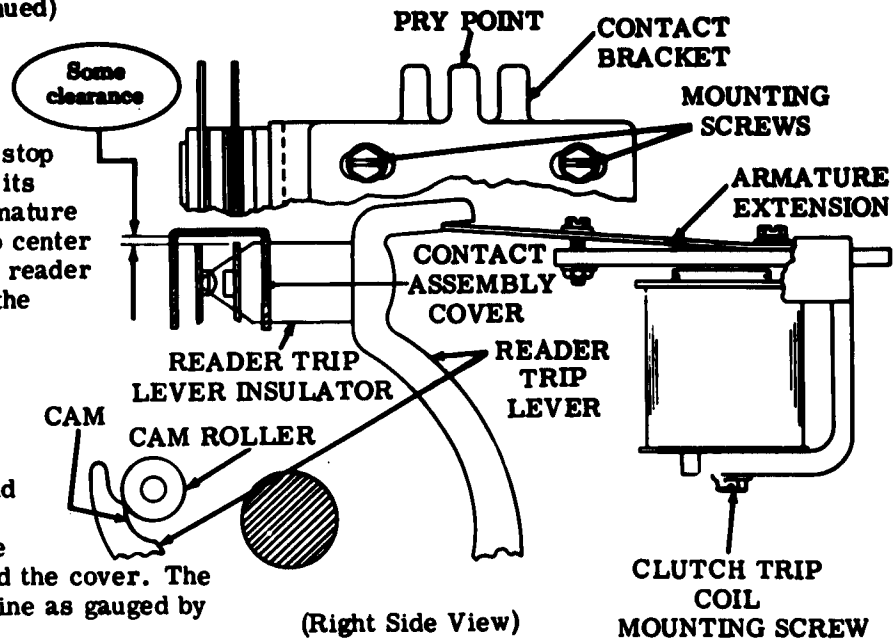
CONTACT GAP (RRA-4)

To Check

Place distributor clutch in stop condition with armature in its unattracted position. If armature does not have guide ears to center the trip lever, position the reader trip lever to the center of the armature extension.

(1) Requirement

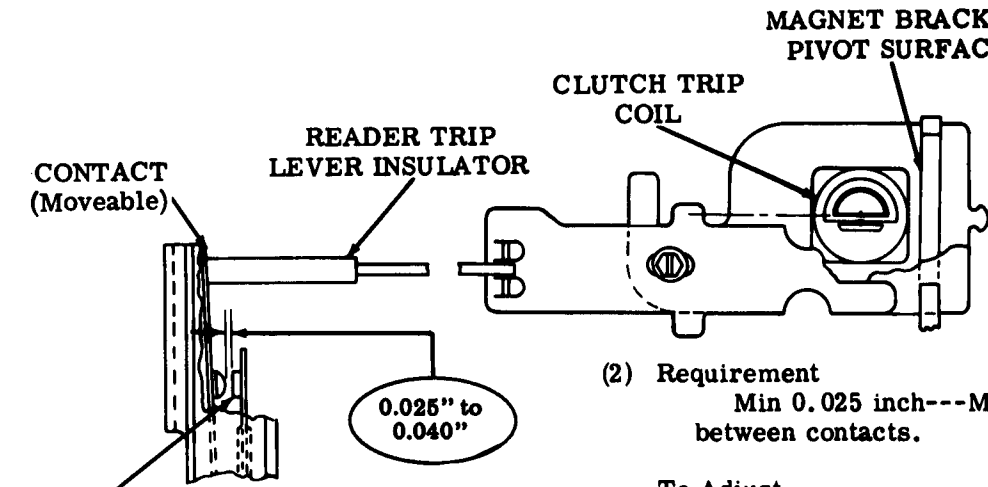
There should be some clearance between the contact leaf springs and the contact assembly cover, and between the trip lever insulator and the cover. The contacts should be in line as gauged by eye.



(Right Side View)

To Adjust

Loosen cover mounting screw. Position cover to meet requirement. Tighten mounting screw.



(2) Requirement

Min 0.025 inch---Max 0.040 inch between contacts.

To Adjust

With contact bracket mounting screws loosened friction tight, position contact bracket using pry points. Tighten screws.

Related Adjustment

Affected By
TRIP LEVER OVERTRAVEL
(RRA-1)



(Top View)

2.05 Clutch Trip Area (continued)

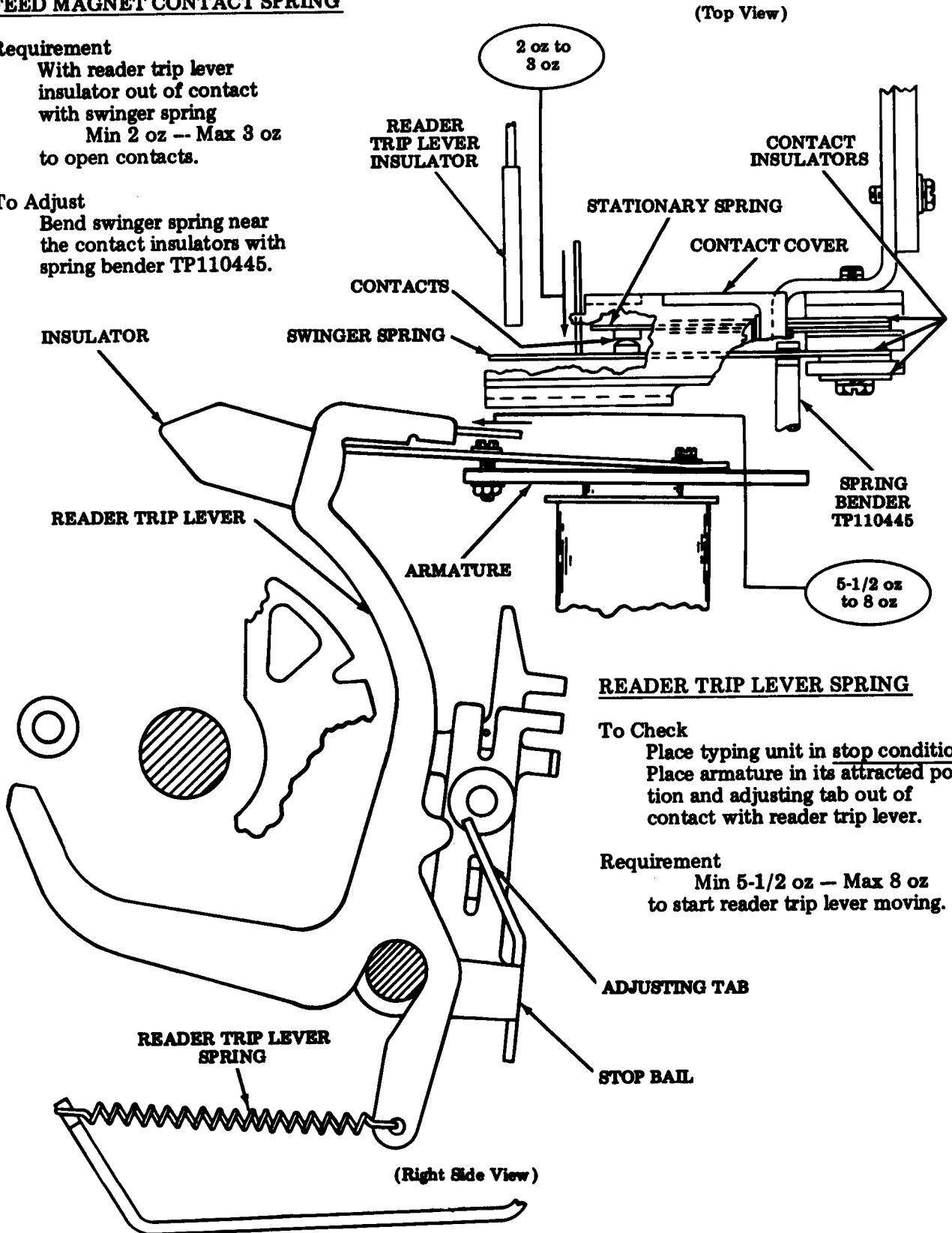
FEED MAGNET CONTACT SPRING

Requirement

With reader trip lever insulator out of contact with swinger spring
 Min 2 oz -- Max 3 oz to open contacts.

To Adjust

Bend swinger spring near the contact insulators with spring bender TP110445.



READER TRIP LEVER SPRING

To Check

Place typing unit in stop condition. Place armature in its attracted position and adjusting tab out of contact with reader trip lever.

Requirement

Min 5-1/2 oz -- Max 8 oz to start reader trip lever moving.

2.06 Tape Reader Area

DETENT LEVER (RRA-5)

Requirement

Place control lever in FREE position. Rotate feed wheel in direction of tape travel to a point where the feed wheel pins are at their maximum advance position with respect to the sensing pins. Tips of sensing pins must be centrally located in the code holes of an all marking code.

Note: If the tape reader is operating under power, do not push the control lever beyond the STOP position until the tape reader has stopped.

To Adjust

With detent bracket mounting screw friction tight, position detent bracket by means of pry points. Tighten screw.

Related Adjustments

Affects

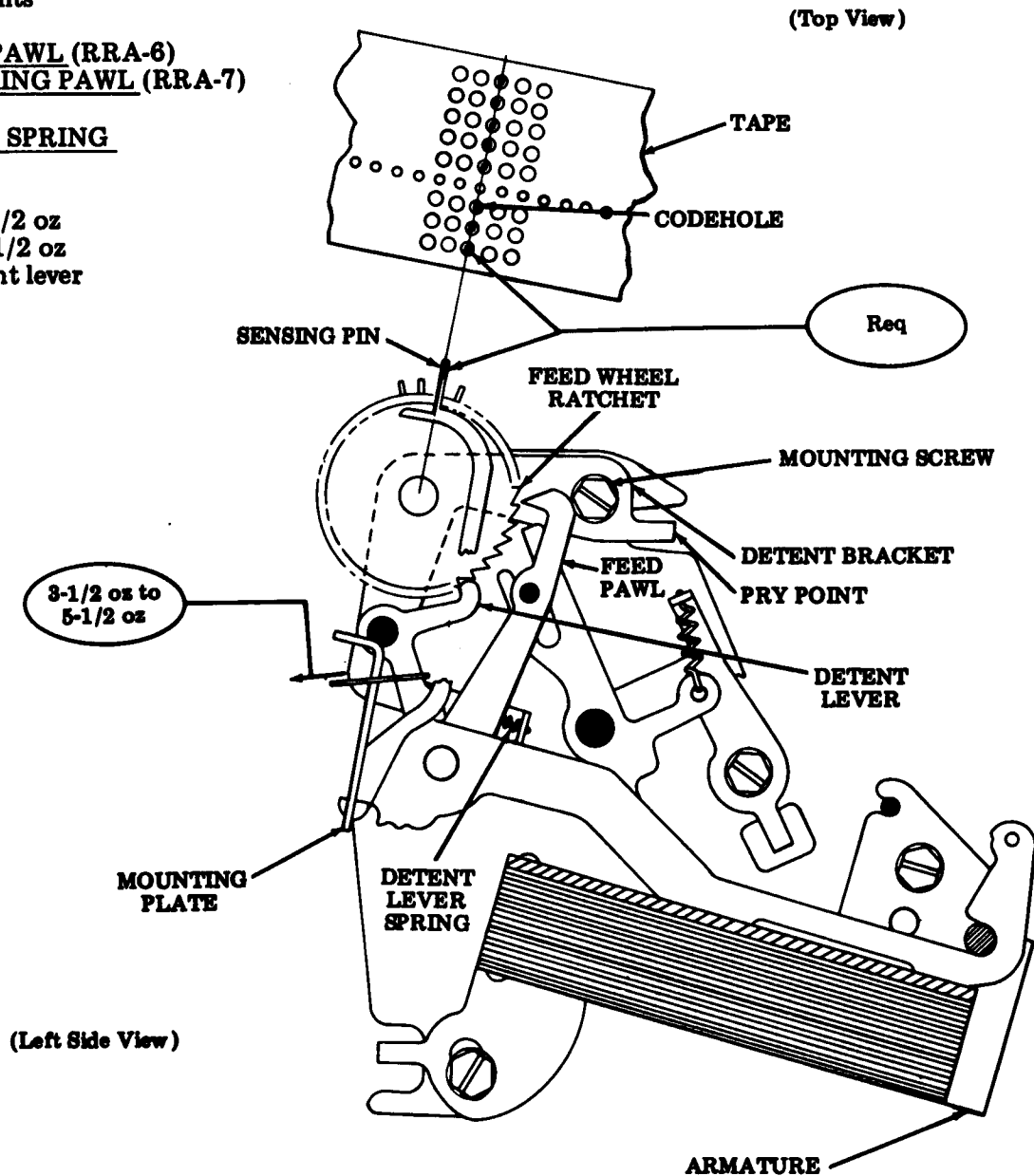
FEED PAWL (RRA-6)

BLOCKING PAWL (RRA-7)

DETENT LEVER SPRING

Requirement

Min 3-1/2 oz
Max 5-1/2 oz
to start detent lever moving.



2.07 Tape Reader Area (continued)

FEED PAWL (RRA-6)

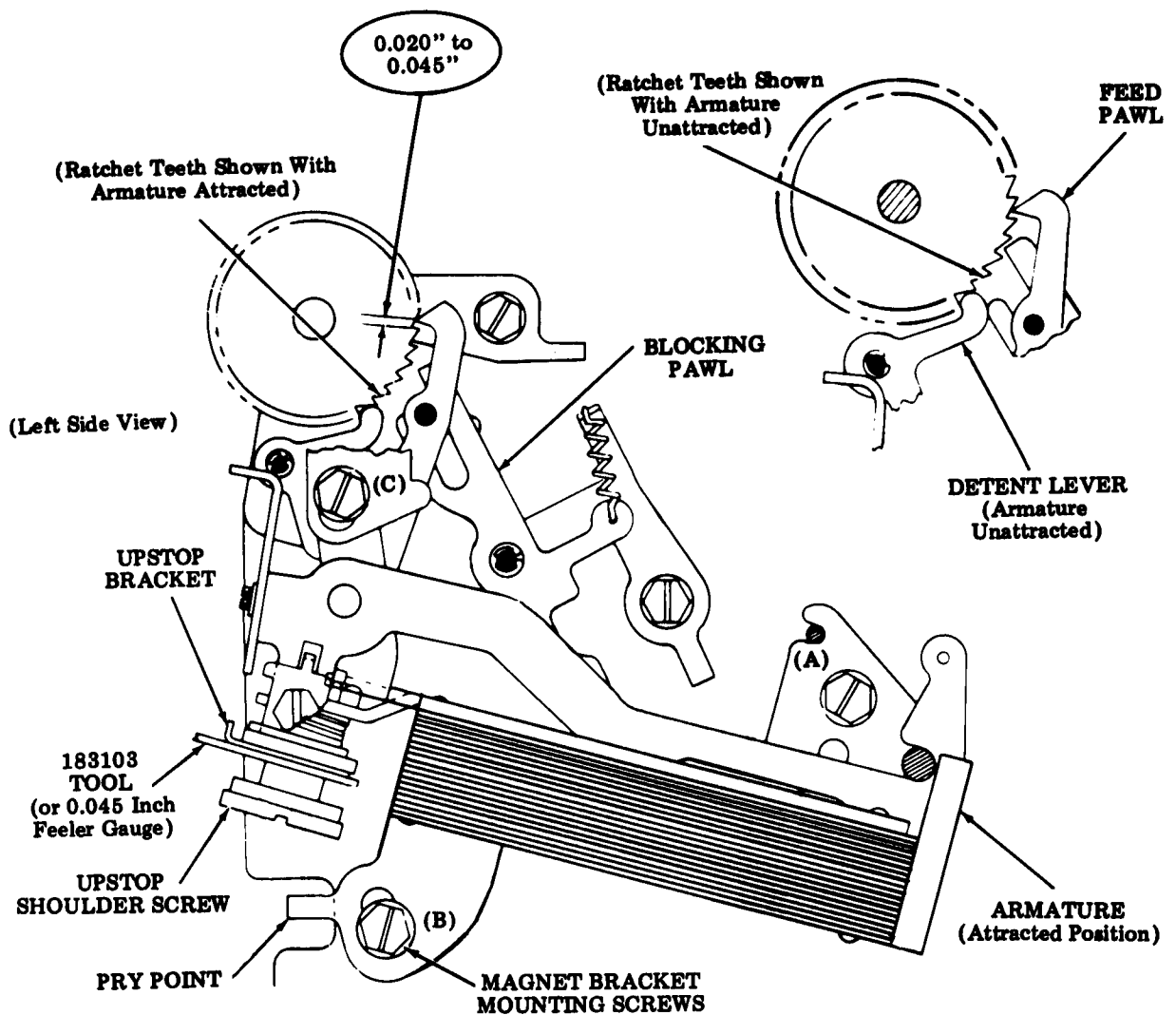
(1) To Check
Place armature in attracted position.

(1) Requirement
Min 0.020 inch --- Max 0.045 inch
between feed pawl and ratchet tooth
and a total of 5 ratchet teeth between
detent and feed pawl.

To Adjust
Place armature in attracted position
magnet bracket centered within
adjusting slot.
Loosen 2 bracket mounting screws so
that upstop bracket is free to move.

Loosen sensing pin guide so it is free
to move.
Insert 183103 tool (or a 0.045 inch
feeler gauge) between upstop bracket
and shoulder of upstop shoulder screw.
Position upstop bracket flat on tool
(within 0.003 inch). Tighten
mounting screws. Remove tool.

Note: Tighten magnet bracket mounting
screws A and B first. Then rotate
vibration damper until the upper
finger presses firmly on contact block
extension. Tighten magnet bracket
mounting screw C.



2.08 Tape Reader Area (continued)

FEED PAWL (RRA-6) (continued)

(2) To Check

Place armature in unattracted position. Check for some clearance between the blocking pawl and ratchet tooth. If some clearance is not present, provide some clearance with the **BLOCKING PAWL (RRA-7)** adjustment. Rotate ratchet to a position that provides least clearance between feed pawl and ratchet tooth.

(2) Requirement

Min some --- Max 0.008 inch between feed pawl and ratchet tooth at closest tooth and a total of 5 ratchet teeth between detent and feed pawl.

To Adjust

Place armature in unattracted position. Loosen three bracket mounting screws. Insert screwdriver between pry points and position the magnet bracket to meet requirement. Tighten mounting screw.

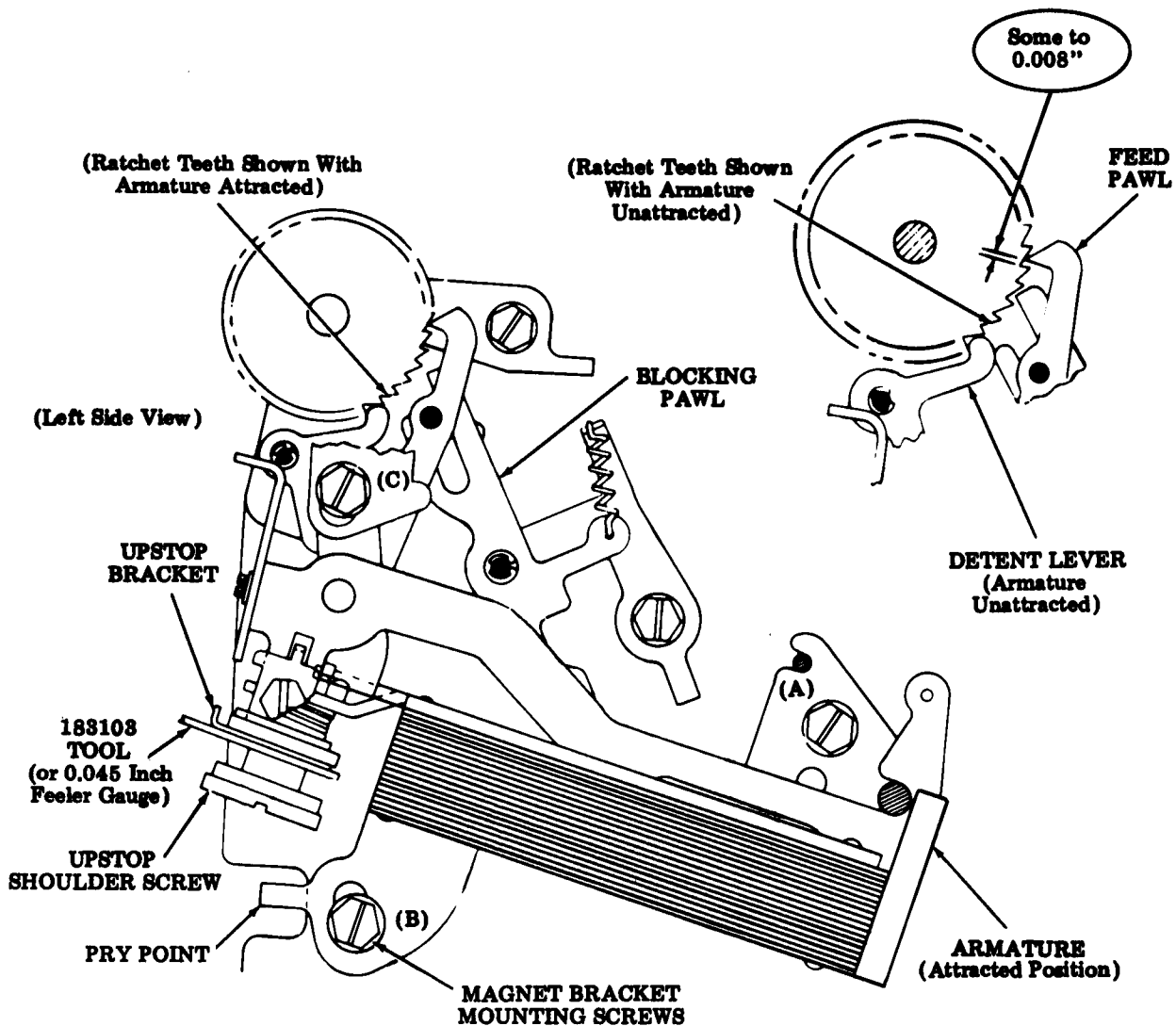
Related Adjustments

Affects

BLOCKING PAWL (RRA-7)
SENSING PIN (RRA-8)

Affected By

TRIPLEVER OVERTRAVEL (RRA-1)



2.09 Tape Reader Area (continued)

UPSTOP SPRING

Requirement

With armature spring post removed from its slot in magnet bracket

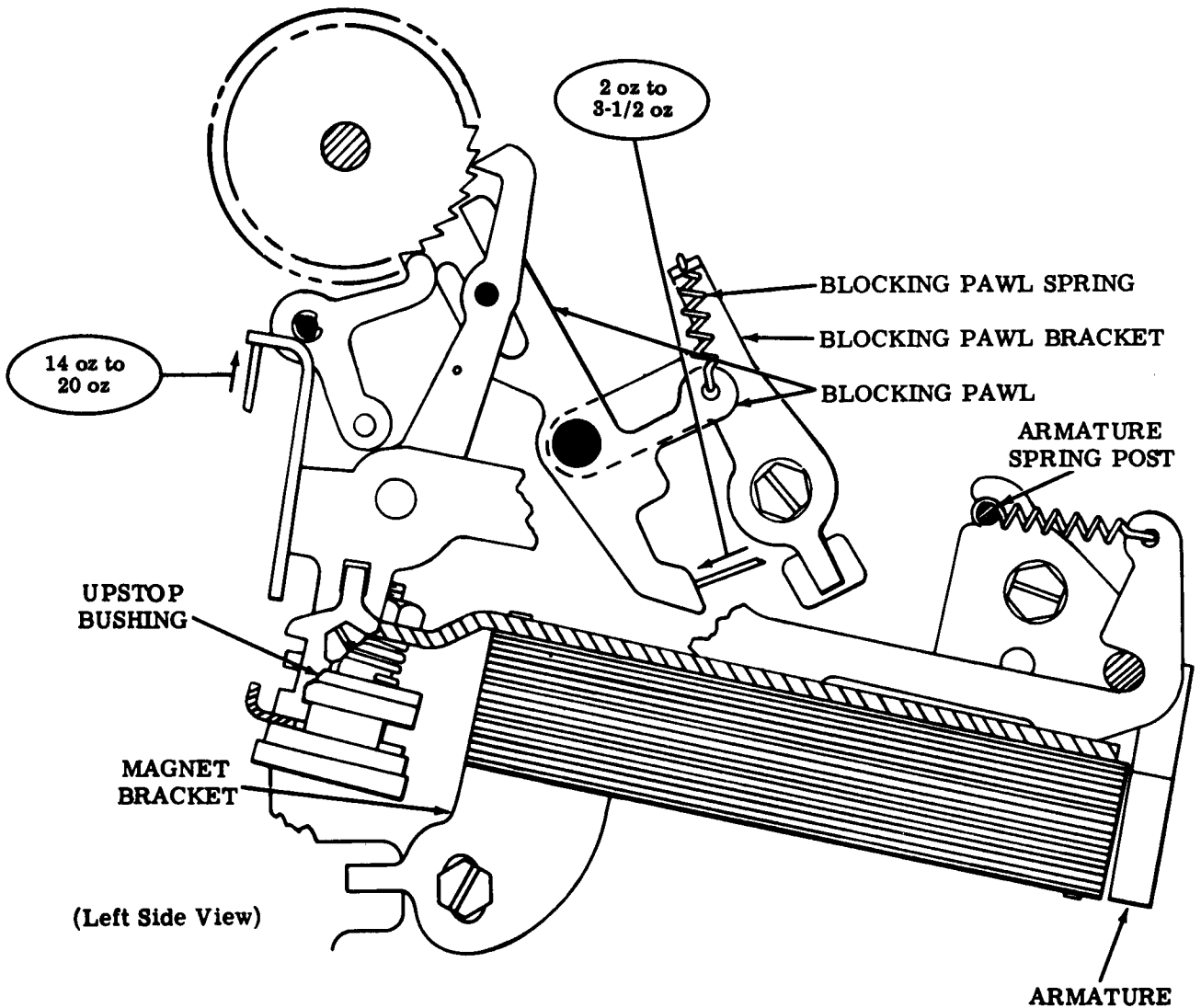
Min 14 oz --- Max 20 oz to start upstop bushing moving.

BLOCKING PAWL SPRING

Requirement

With the armature in its unattracted position and control lever in START position

Min 2 oz --- Max 3-1/2 oz to start blocking pawl moving.



2.10 Tape Reader Area (continued)

BLOCKING PAWL (RRA-7)

To Check

Place armature in unattracted position. Check to see that there is some clearance between feed pawl and ratchet tooth. If not, provide clearance. See FEED PAWL (RRA-6).

Requirement

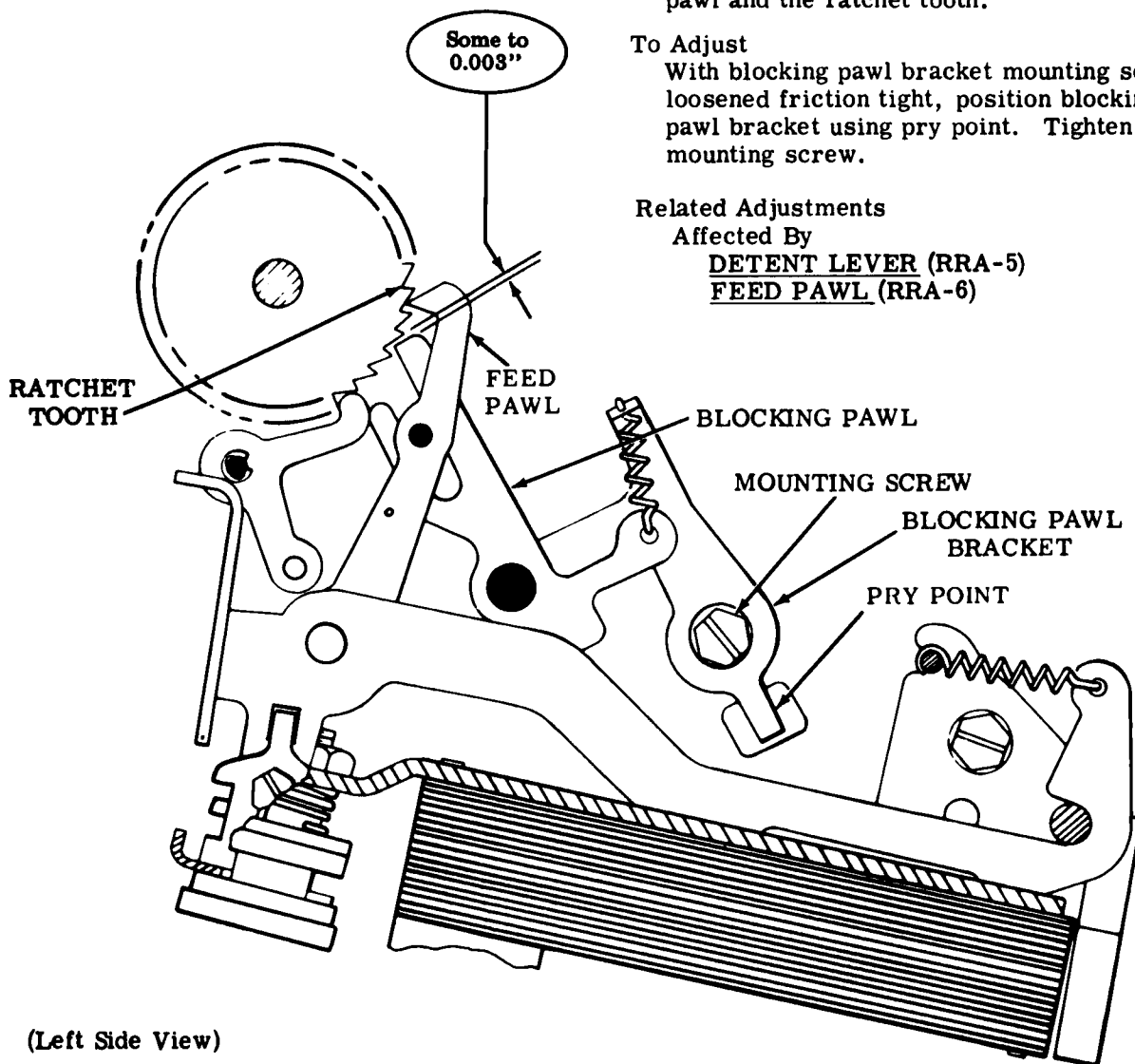
Rotate ratchet for least clearance between end of blocking pawl and a ratchet tooth
Min Some---Max 0.003 inch
at closest point between end of blocking pawl and the ratchet tooth.

To Adjust

With blocking pawl bracket mounting screw loosened friction tight, position blocking pawl bracket using pry point. Tighten mounting screw.

Related Adjustments

Affected By
DETENT LEVER (RRA-5)
FEED PAWL (RRA-6)



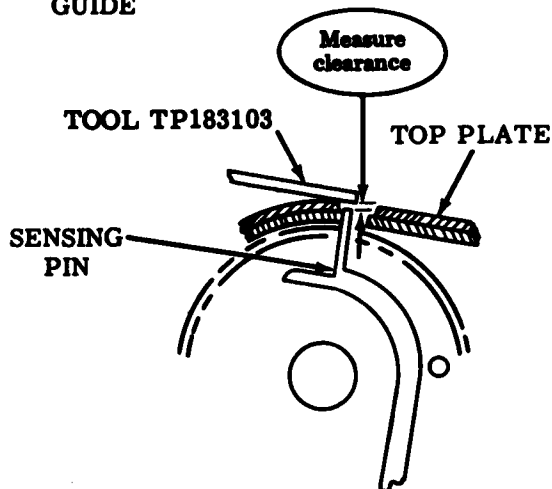
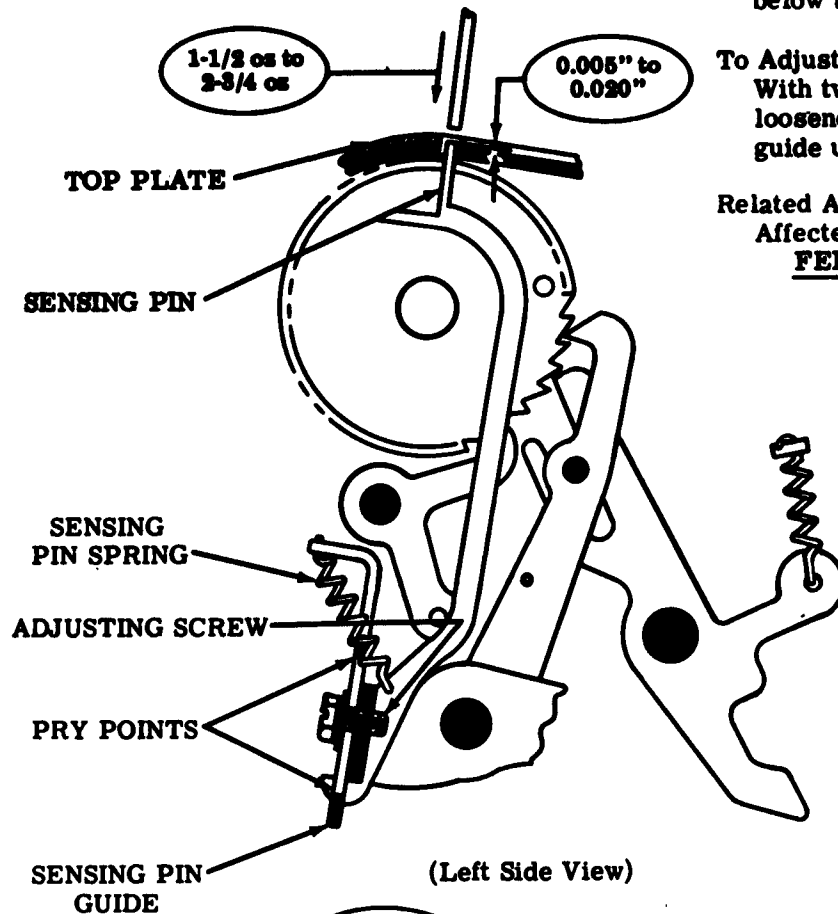
(Left Side View)

2.11 Tape Reader Area (continued)

SENSING PIN SPRING

Requirement

With armature in its attracted position
 Min 1-1/2 oz --- Max 2-3/4 oz
 to position sensing pin flush with top plate.



(Left Side View)

SENSING PIN (RRA-8)

Requirement

With armature in unattracted position, the tip of all sensing pins shall be
 Min 0.005 --- Max 0.020 inch
 below top surface of top plate.

To Adjust

With two sensing pin guide adjusting screws loosened friction tight, position sensing pin guide using pry points. Tighten screws.

Related Adjustment

Affected By
FEED PAWL (RRA-6)

Note: This adjustment may be made by using the thin-slotted end of tool TP183103. To check the above requirement (0.015 inch), hold the tool directly above the sensing pins and measure the clearance. Adjust, if necessary, as indicated above.

2.12 Tape Reader Area (continued)

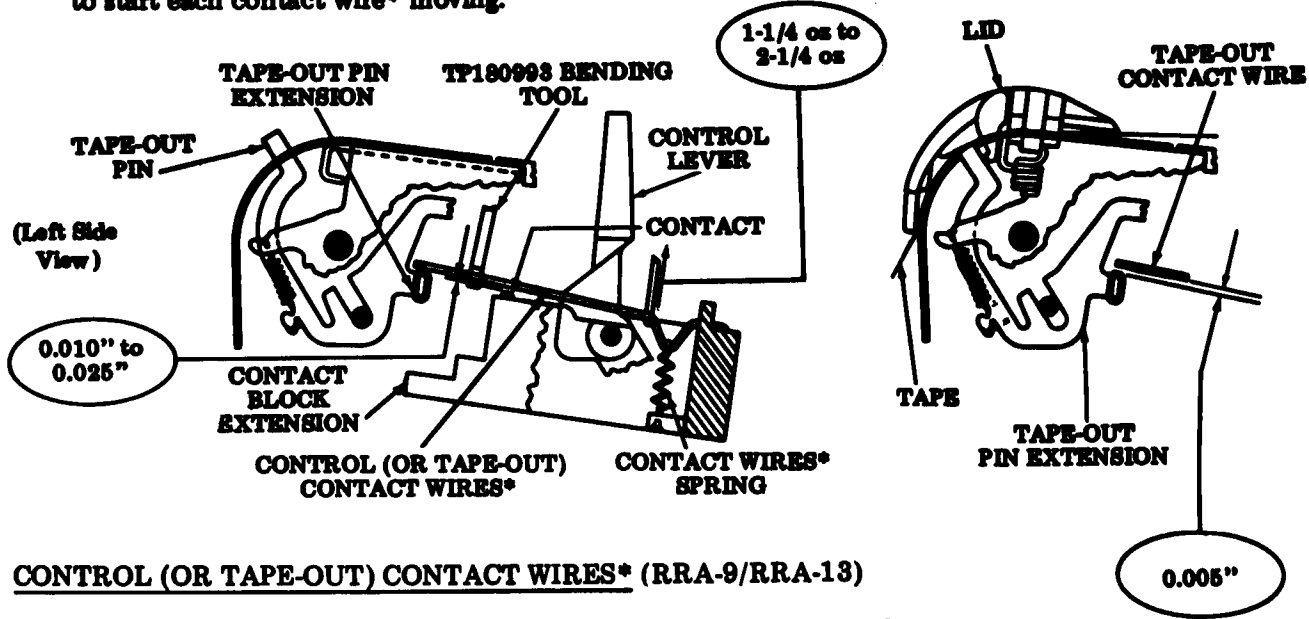
CONTACT WIRES* SPRING

To Check

Place control lever in START position and fully depress tape-out pin.

Requirement

Min 1-1/4 oz — Max 2-1/4 oz
to start each contact wire* moving.



CONTROL (OR TAPE-OUT) CONTACT WIRES* (RRA-9/RRA-13)

Note 1: Readers without automatic reader control, place control lever in START position; with automatic control, NEUTRAL position.

(1) Requirement

With tape-out pin in its fully up position,
Min 0.010 inch — Max 0.025 inch
between control (or tape-out) contact wires* and contact.

(2) Requirement

With tape in reader and reader lid closed,
Min 0.005 inch
clearance between the tape-out pin extension and tape-out contact wire.

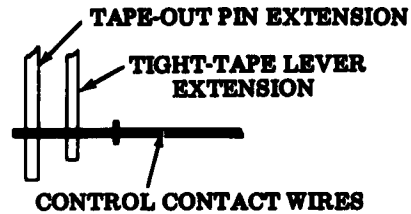
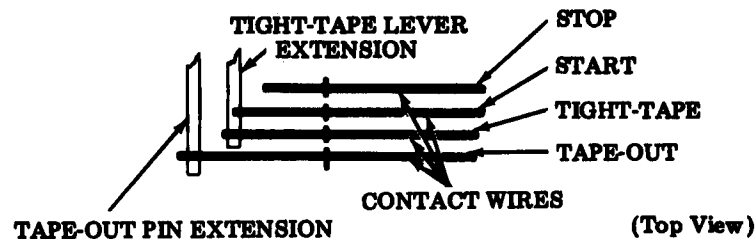
To Adjust

Bend control (or tape-out) contact wires* between the contact and the tape-out pin extension with bending tool TP180993.

***Note 2:** The location of the contact wires is shown below:

TAPE READERS WITH AUTOMATIC READER CONTROL

TAPE READERS WITHOUT AUTOMATIC READER CONTROL



2.13 Tape Reader Area (continued)

Note: The following adjustment applies only to tape readers with automatic reader control.

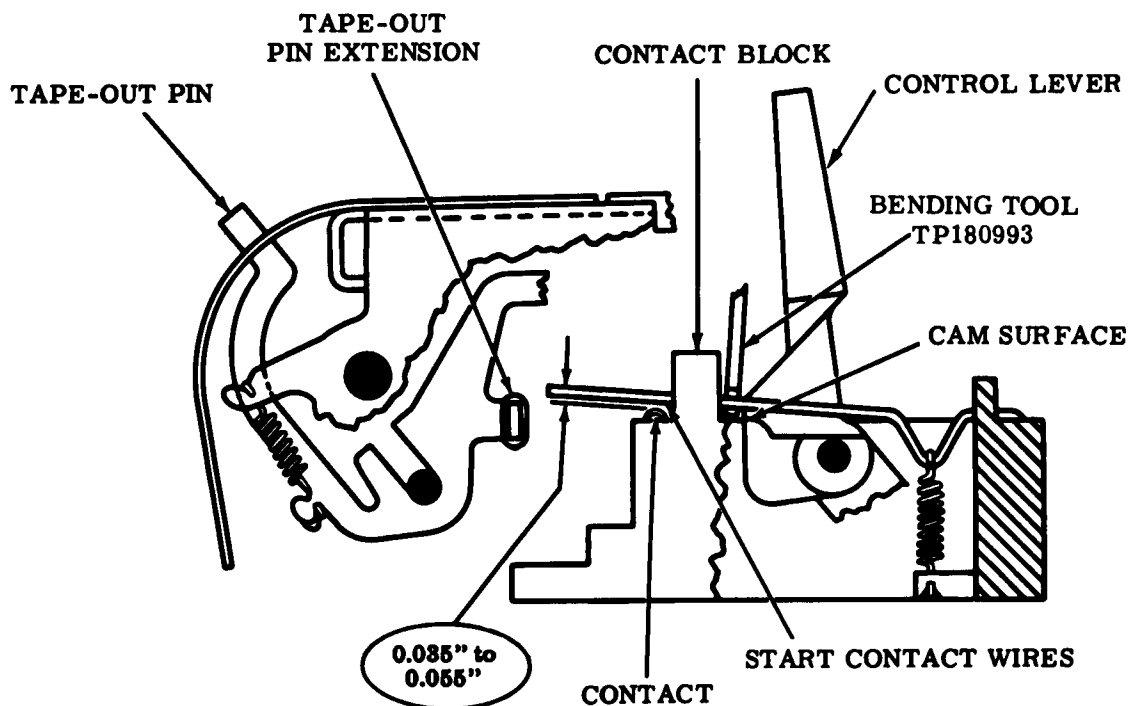
START CONTACT WIRES (RRA-12)**Requirement**

With the control lever in the neutral position (resting in a position midway between START and STOP positions)

Min 0.035 inch --- Max 0.055 inch
between the start contact wires and their contact.

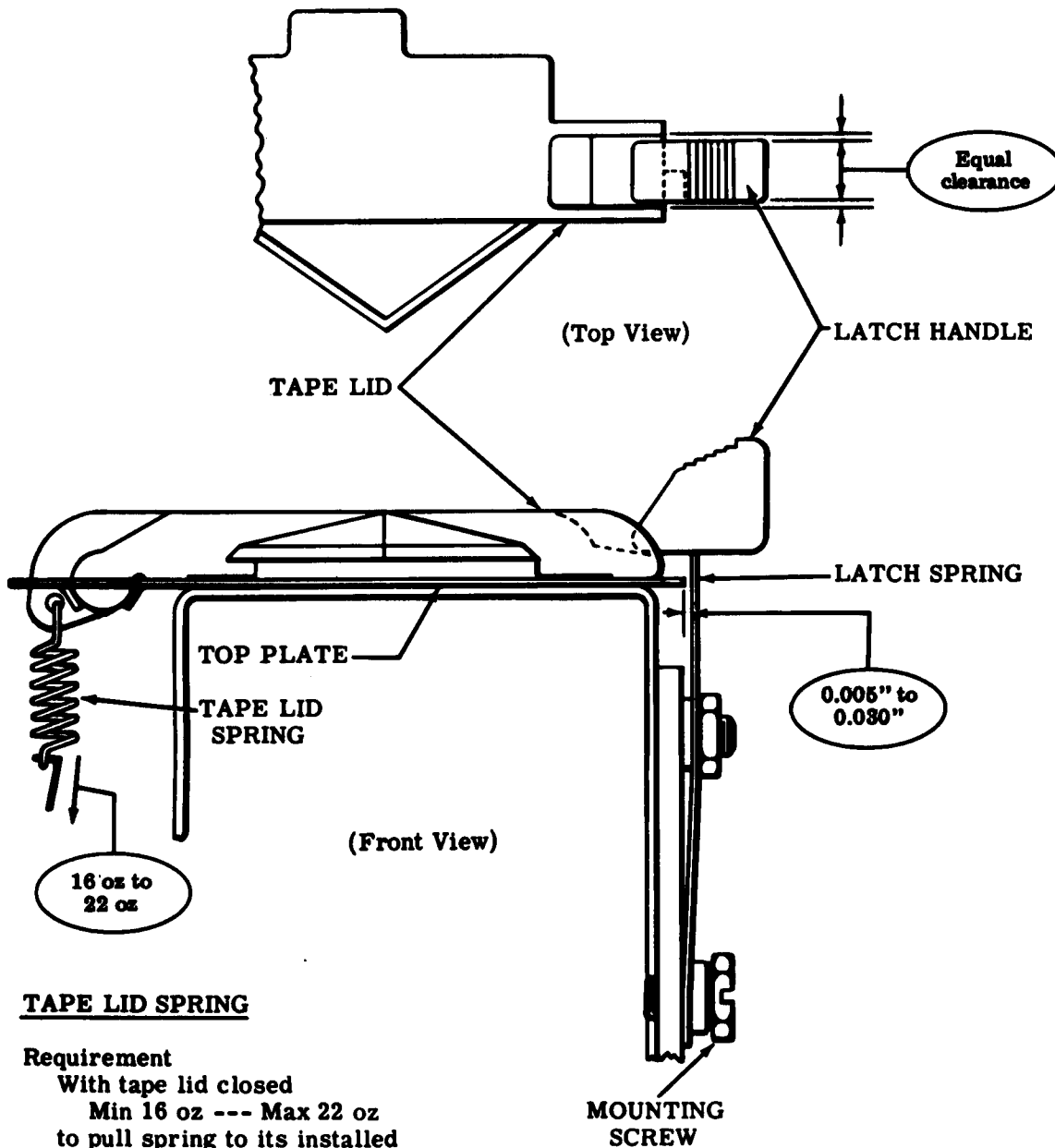
To Adjust

With the control lever in the FREE position, bend start contact wires between contact block and control lever cam surface with bending tool TP180993.



(Left Side View)

2.14 Tape Reader Area (continued)



TAPE LID SPRING

Requirement
 With tape lid closed
 Min 16 oz --- Max 22 oz
 to pull spring to its installed
 length.

TAPE LID LATCH HANDLE (RRA-10)

Requirement
 (1) With tape lid closed
 Min 0.005 inch --- Max 0.030 inch
 between top plate and latch spring.
 (2) Equal clearance between latch and tape lid.

To Adjust
 With mounting screw friction tight, position
 latch handle vertically. Tighten screw.

2.15 Tape Reader Area (continued)

TIGHT-TAPE LEVER SPRING

Requirement

With the tape lid closed
 Min 1 oz --- Max 2-1/4 oz
 to start tight-tape lever moving.

CONTROL DETENT SPRING

Requirement

Place control lever in STOP position,

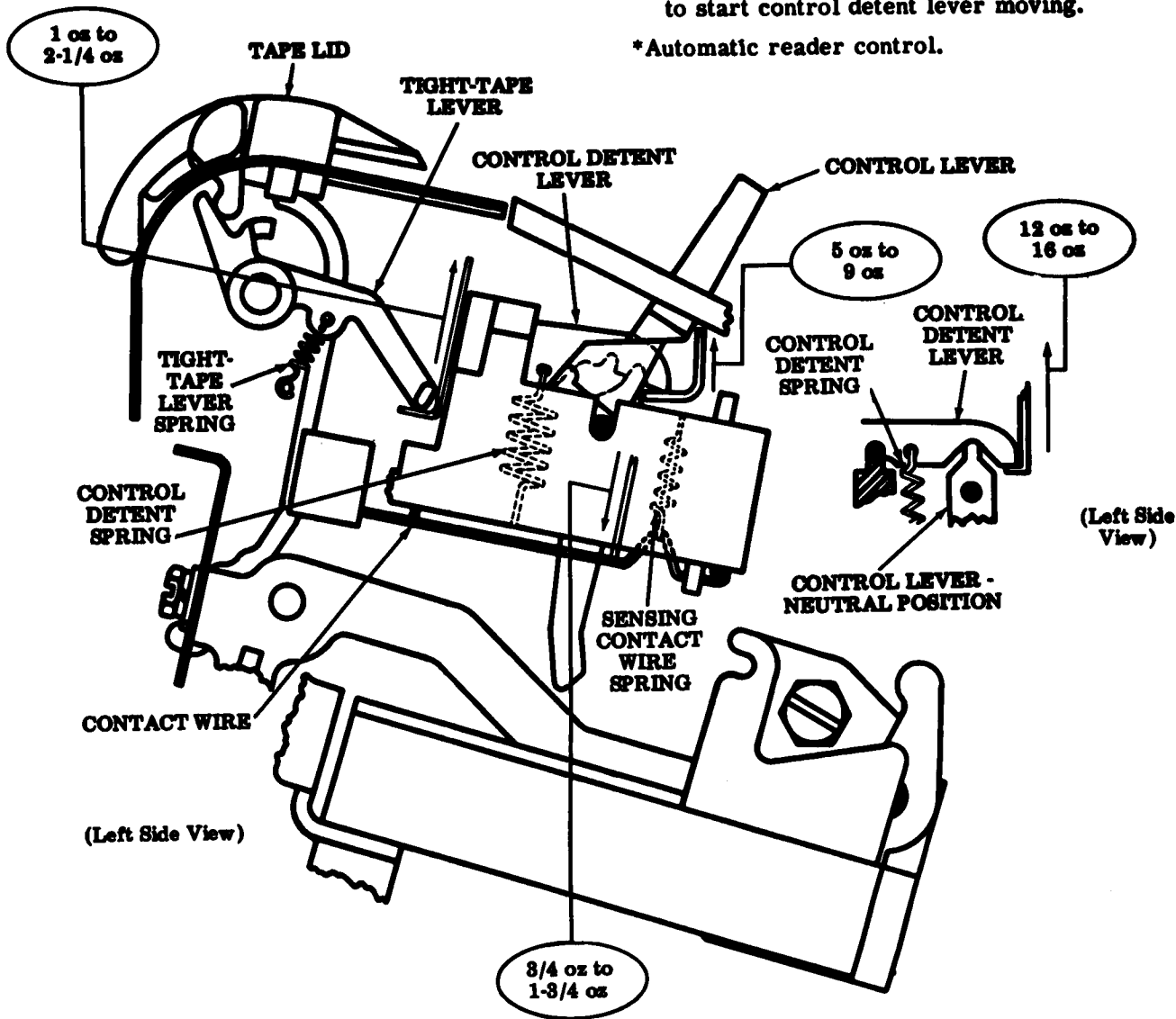
Note: For tape readers with automatic reader control, place the control lever in the neutral position.

Without* Min 5 oz --- Max 9 oz

With* Min 12 oz --- Max 16 oz

to start control detent lever moving.

*Automatic reader control.



SENSING CONTACT WIRE SPRING

Requirement

With armature in its attracted position
 Min 3/4 oz --- Max 1-3/4 oz
 to start contact wire moving.

2.16 Tape Reader Area (continued)

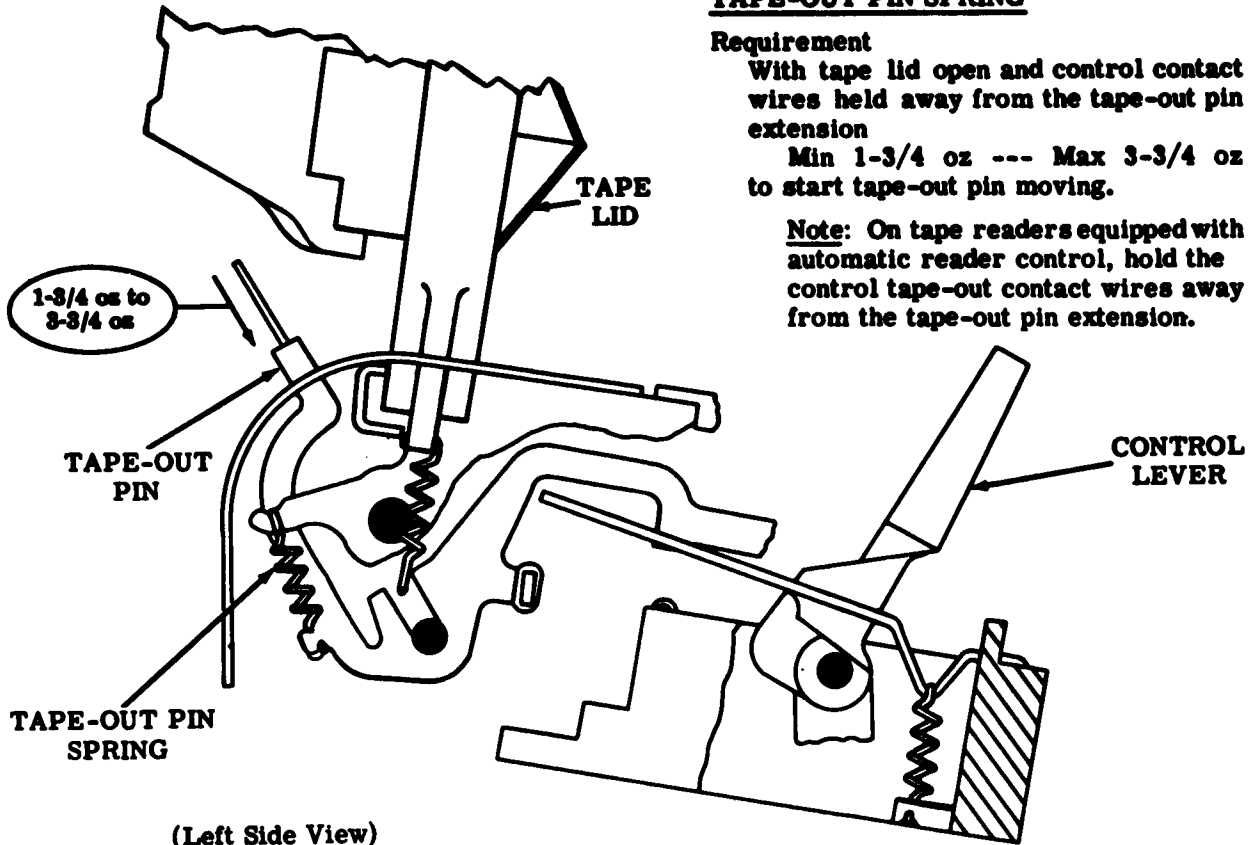
TAPE-OUT PIN SPRING

Requirement

With tape lid open and control contact wires held away from the tape-out pin extension

Min 1-3/4 oz --- Max 3-3/4 oz to start tape-out pin moving.

Note: On tape readers equipped with automatic reader control, hold the control tape-out contact wires away from the tape-out pin extension.

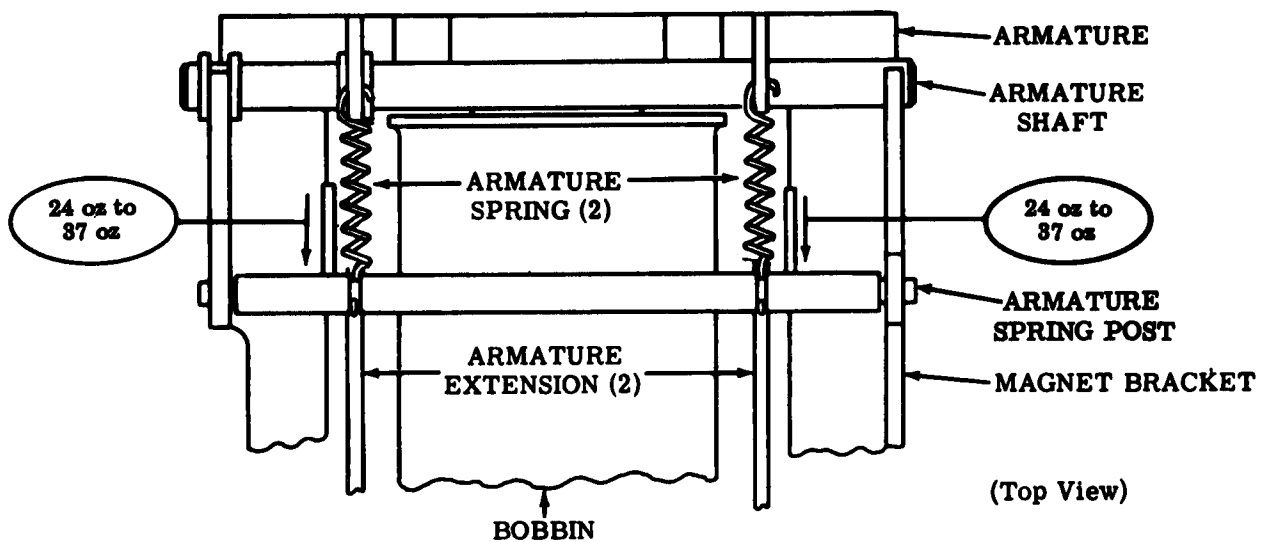


ARMATURE SPRING

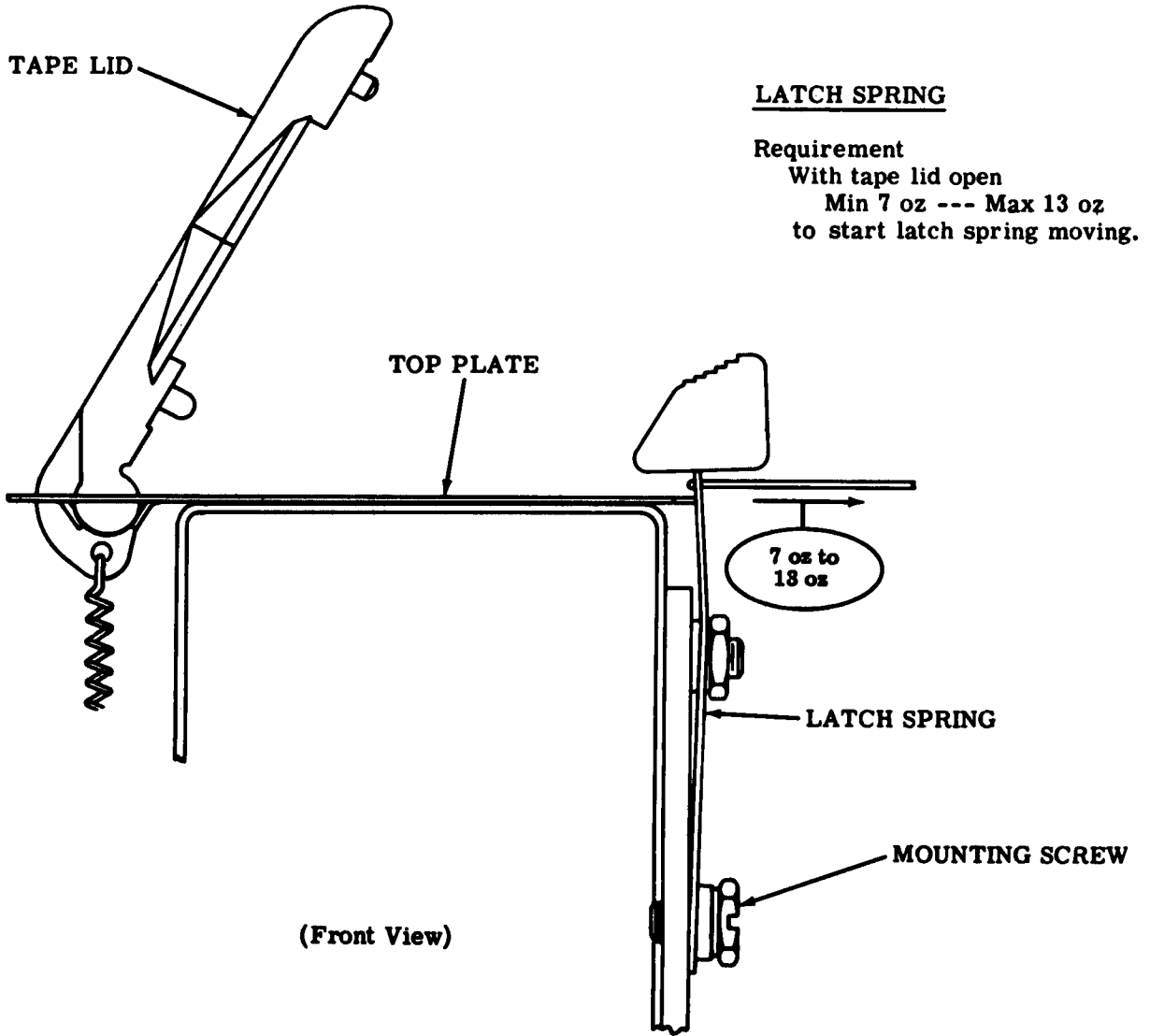
Requirement:

With armature in its unattracted position

Min 24 oz --- Max 37 oz to start spring post moving. Measure each end individually.



2.17 Tape Reader Area (continued)



2.18 Tape Reader Area (continued)

Note: The following adjustment applies to tape readers with early design bases.

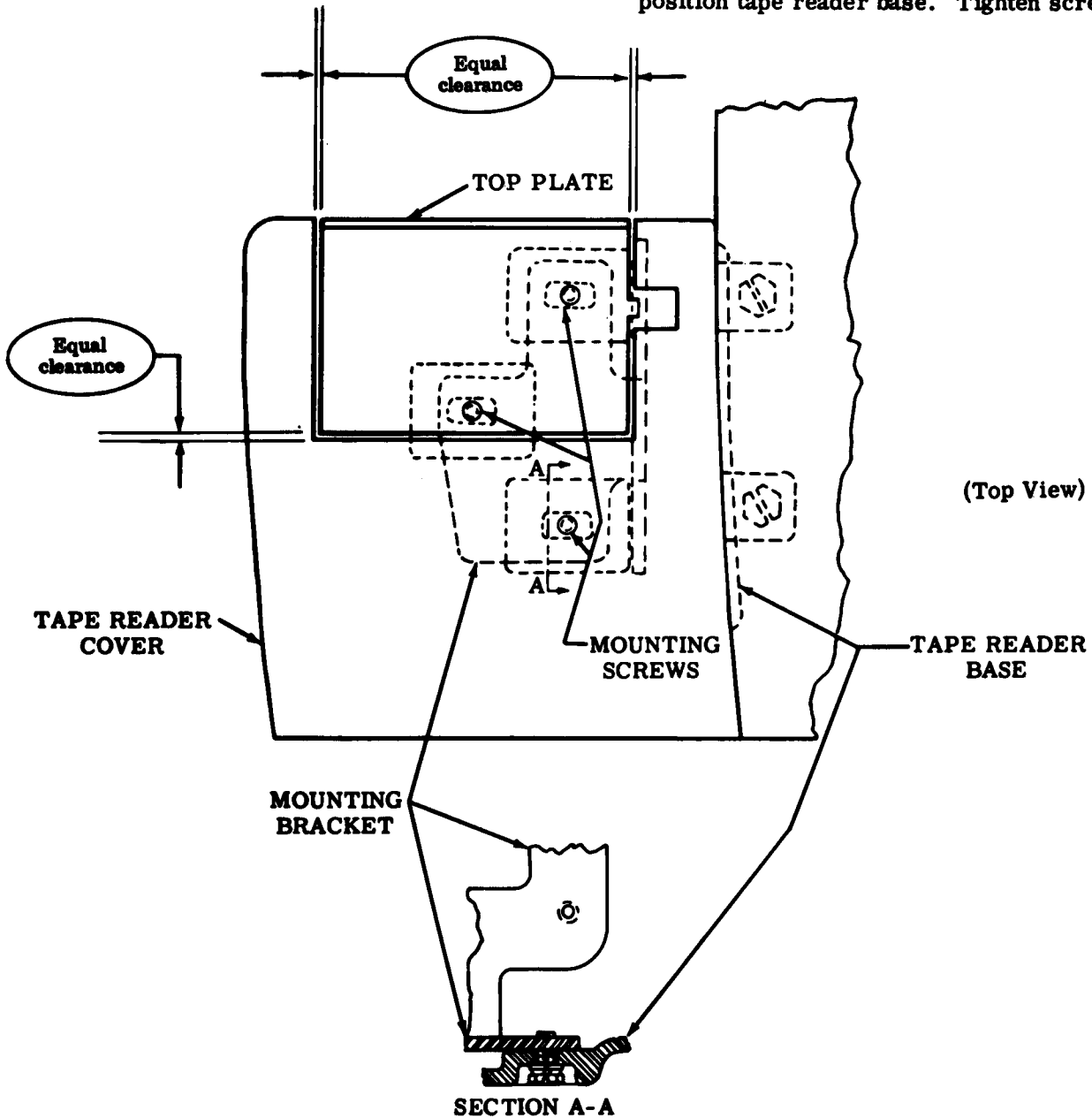
READER MOUNTING BRACKET (RRA-11)

Requirement

There should be equal clearance on three sides between top plate and tape reader cover.

To Adjust

With three mounting screws friction tight, position tape reader base. Tighten screws.



2.19 Tape Reader Area (continued)

Note: The following adjustment applies to tape readers with late design bases.

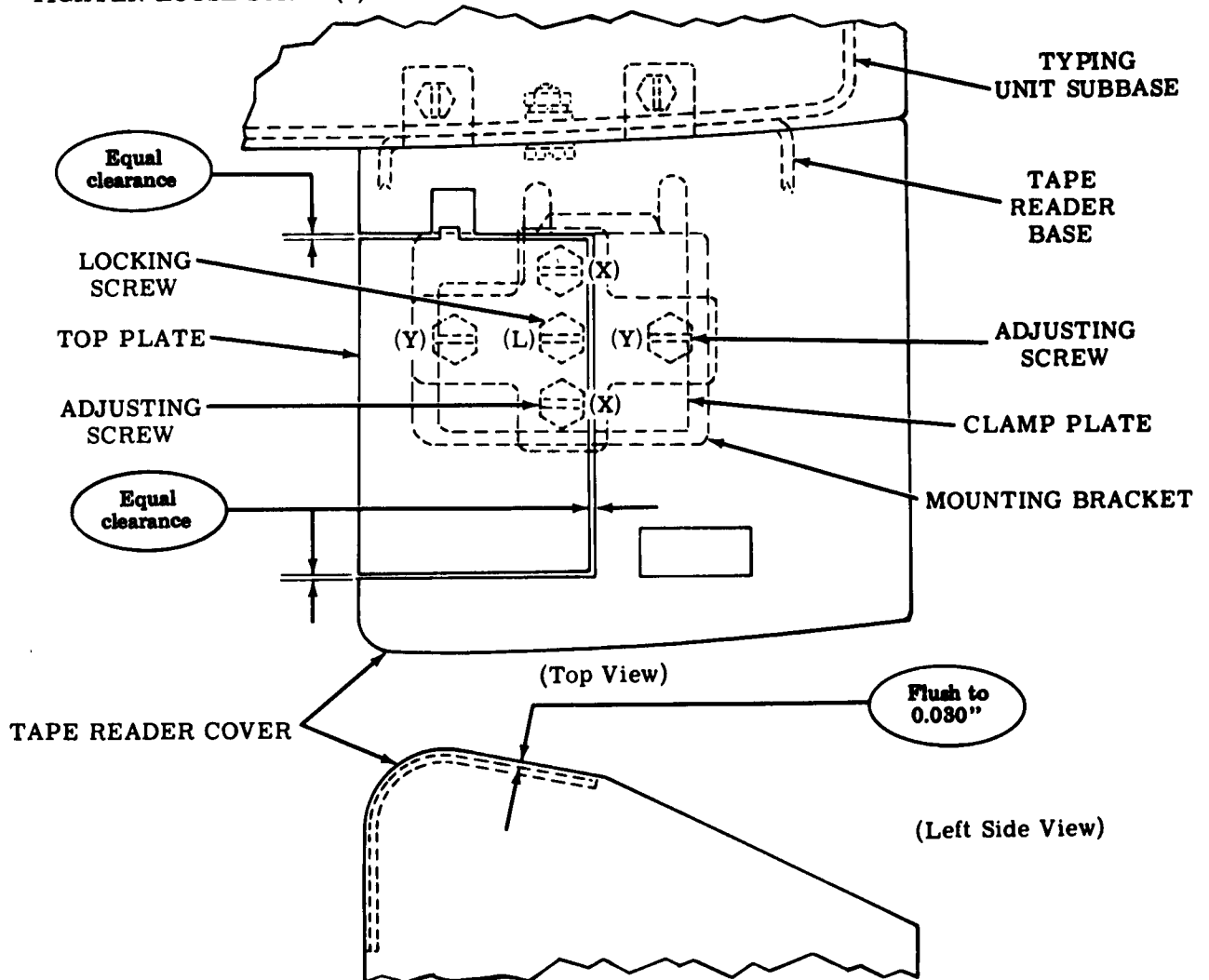
READER MOUNTING BRACKET (RRA-11) (Continued)

- (1) Requirement
Top plate to be
Min Flush --- Max 0.030 inch
below cover.
- (2) Requirement
Equal clearance between top plate and tape reader cover on three sides.

To Adjust

With four adjusting screws and locking screw (L) loosened and mounting bracket lying flat on tape reader base, position tape reader. Run two adjusting screws (X) up until requirement is approximately met. Tighten locking screw friction tight. Run two adjusting screws (Y) up until requirement is approximately met. Refine all four adjusting screws. Tighten locking screw (L).

CAUTION: (1) TO PREVENT STRIPPING OF THREADS IN READER BASE WHEN ADJUSTING OR REFINING (X) OR (Y) SCREWS, BACK OFF SLIGHTLY ON CENTER LOCKING SCREW WHEN RESISTANCE IS FELT. (2) AFTER COMPLETING THE ADJUSTMENT PROCEDURE, CHECK THAT ALL FOUR ADJUSTING SCREWS ARE AT LEAST FRICTION TIGHT. IF NOT, TIGHTEN LOOSE SCREW(S) FRICTION TIGHT.



SECTION 574-174-700TC

3. VARIATIONS TO THE BASIC UNIT

3.01 Tape Reader Area

Note: The following adjustment applies to readers equipped with timing contacts.

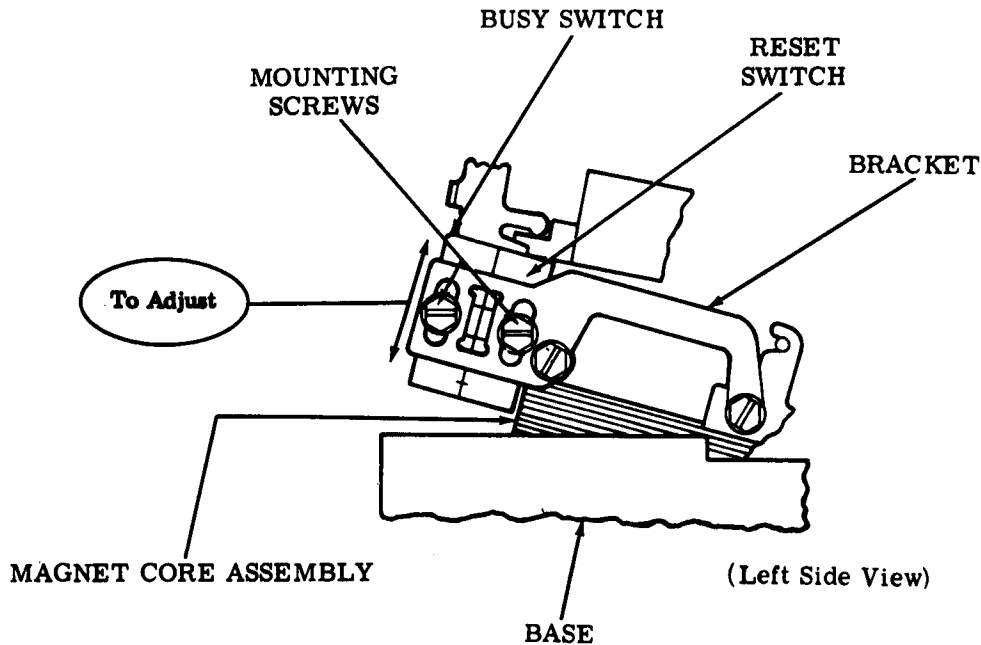
RESET AND BUSY SWITCH TIMING (RRA-14)

(1) Requirement (Preliminary)

The busy and reset switches should be centered in their bracket slots.

(2) Requirement (Final)

With the sensing pins fully down, the reset switch should be closed and the busy switch should be open. With the sensing pins fully up (energized position), the reset switch should be open and the busy switch should be closed.



To Adjust

With switch mounting screws friction tight, position switches up or down. Tighten screws.