

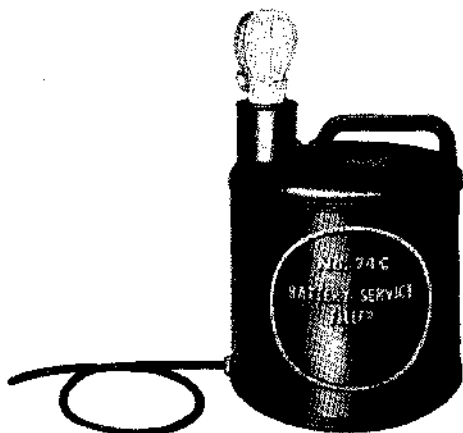
TOOLS

FILLERS - DESCRIPTION

1. GENERAL

- 1.01 This section covers noncoded Bell System filler tools.
- 1.02 When this section is reissued, the reason for reissue will be listed in this paragraph.
- 1.03 The information contained in this section supersedes the corresponding information in Section 074-620-101.
- 1.04 For similar tools, see Cans, Section 074-208-105.

FILLER, BATTERY, E. EDELMANN & COMPANY, 74C

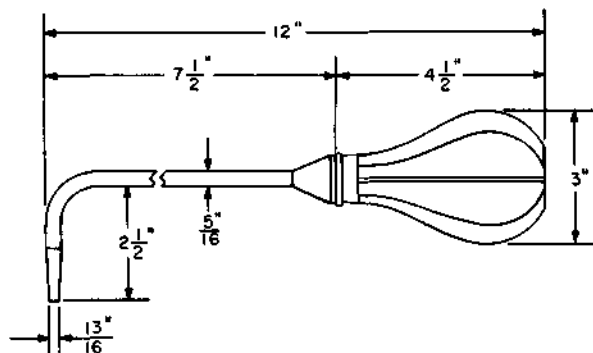


Capacity: one gallon. Replacement part: 771 hose. For transporting water to, and filling, small central office batteries.

FILLER, CELL, SYRINGE TYPE, KS-5499 L1400

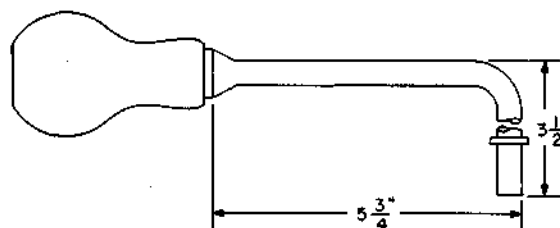
Replaced by the KS-5499 L1401 filler.

FILLER, CELL, SYRINGE TYPE, KS-5499 L1401



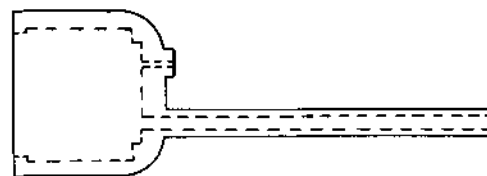
For use on KS-5361 L100, L110, L111, L112, L113, L114, and L115 batteries.

FILLER, CELL, SYRINGE TYPE, WILLARD STORAGE BATTERY COMPANY, 90H



For use on CTR-125 batteries.

FILLER, CELL, COMMERCIAL (Obtain locally)



Consists of a rubber stopper having a spout and air hole. To be mounted on a bottle of about 1 quart capacity. For use in adding distilled water to storage battery cells.

NOTICE

Not for use or disclosure outside the Bell System except under written agreement