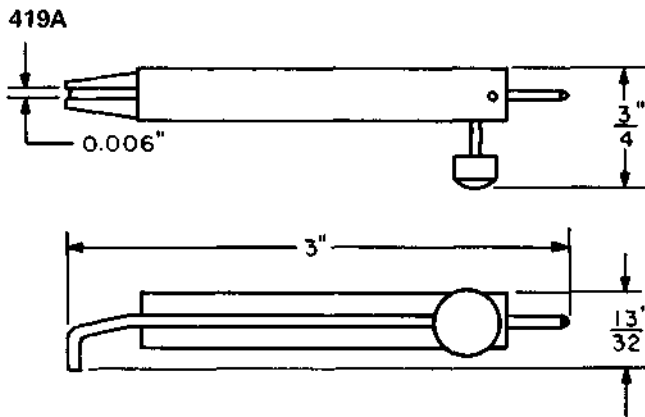


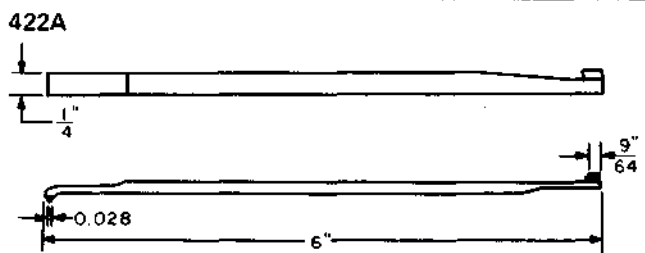
CODED TOOLS  
419A TO 432B  
DESCRIPTION



419A  
Test connector.

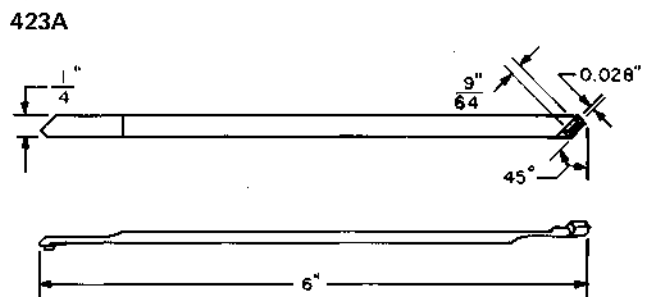
Replaces the No. 252 tool.

For use in making test connections to A- and B-type sequence switches, 157-type interrupters and relays.



422A  
90° offset screwdriver.

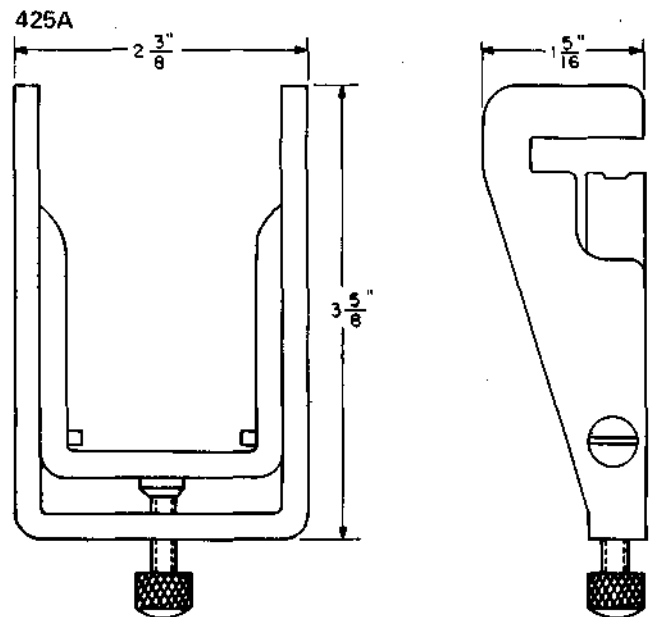
For use on relays, 51-type dial testers, call announcer machines and the Stromberg time stamp.



423A  
45° offset screwdriver.

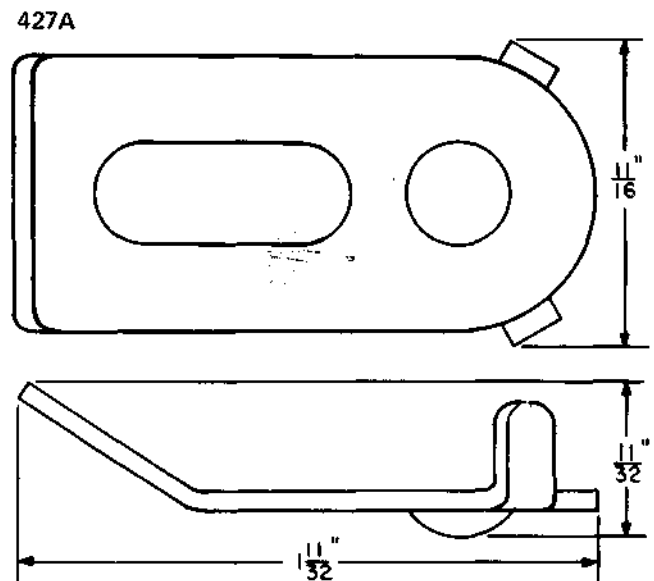
For use on relays, 51-type testers, call announcer machines and the Stromberg time stamp.

424A "Mfr Disc."



425A  
Selector holder.

For use on 200- and 206-type selectors which are nonrigidly mounted.



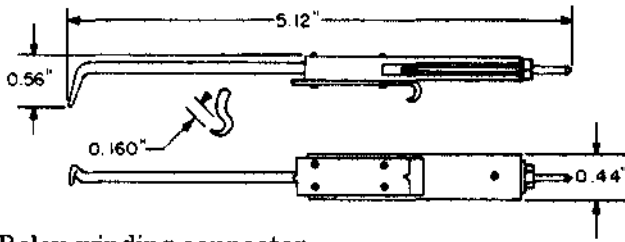
427A  
Shaft supporting tool.

For use on vertical drive shafts.

428A "Mfr Disc."

Replaced by the No. 428B tool.

428B



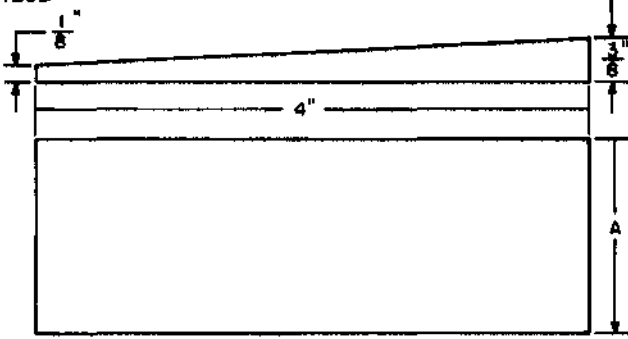
Relay winding connector.

Replaces the No. 428A tool.

For use in making test connections from the front of the relay on 89-, 101-, 105-, 108-, 111-, 121-, 122-, 149-, 162-, 172-, 178-, 179-, 190-, and 196-type relays.

429A

429B



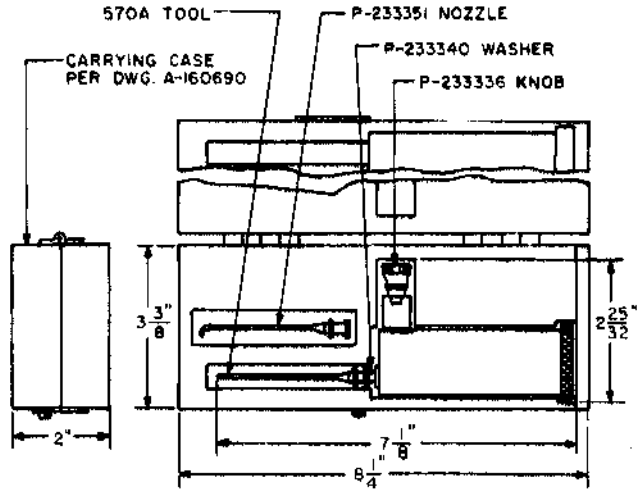
Key supports.

Tool No.	Dim. "A"
429A	1-1/2"
420B	2-1/4"

These tools replace key support R-9190.

For use in supporting universal-type keys while adjusting.

431A



Oil gun. Designed to discharge oil in definite limited quantities. Furnished with a wooden carrying case and two nozzles, one straight and one curved.

Replaces the No. 297, 362A and 362B tools.

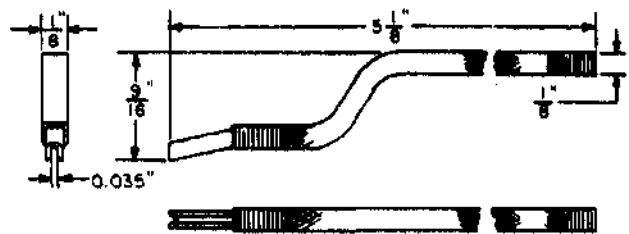
For general use.

432A

"Mfr Disc."

Replaced by the No. 432B tool.

432B



Multiple band terminal adjuster.

Replaces the No. 432A tool.

For use on panel multiple banks.