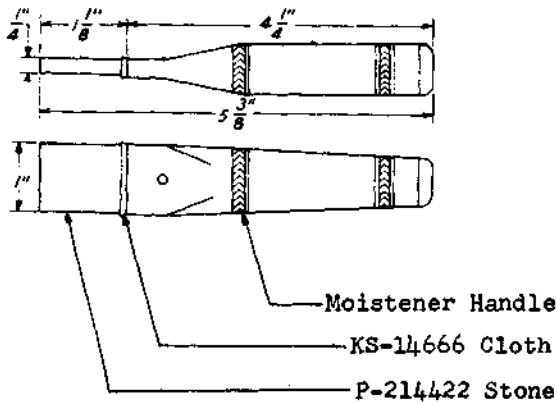


CODED TOOLS
378A TO 386B
DESCRIPTION

→ TOOL, 378A

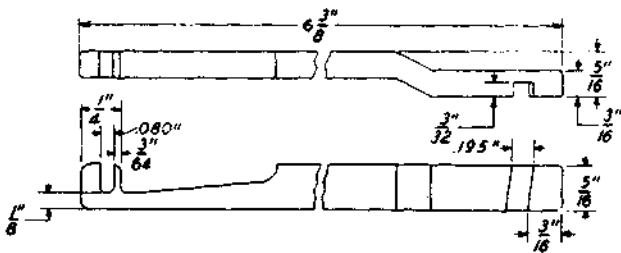


Friction surface restorer.

Replaces friction surface restorer R-2130.

For use on drives of power driven rotary selectors and A and B-type sequence switches.

TOOL, 379A

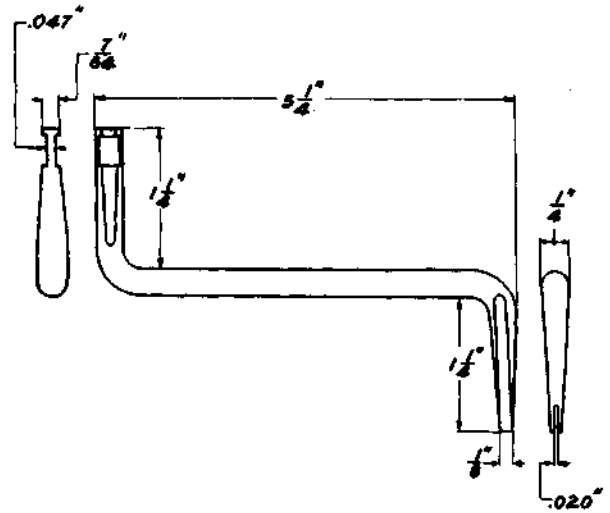


Adjuster

Replaces the 233 and 301 tools and adjuster R-63773.

For use on helical spring type clutches and 200- and 206-type selectors.

TOOL, 380A

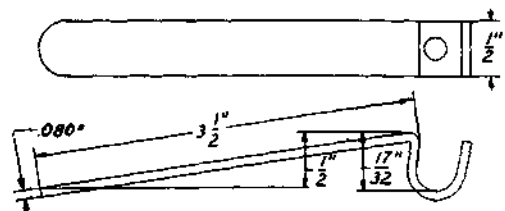


Spring adjuster.

Replaces spring adjuster R-55760.

For use on panel multiple brushes.

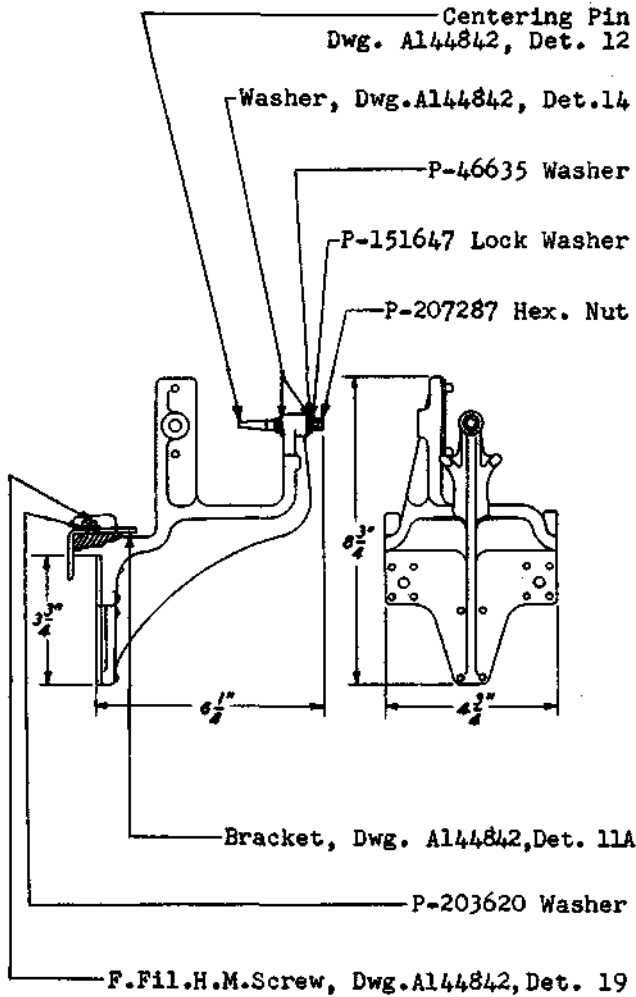
TOOL, 382A



Trip rod holder.

For use on 4 and 14-type trip rods.

→ TOOL, 384A

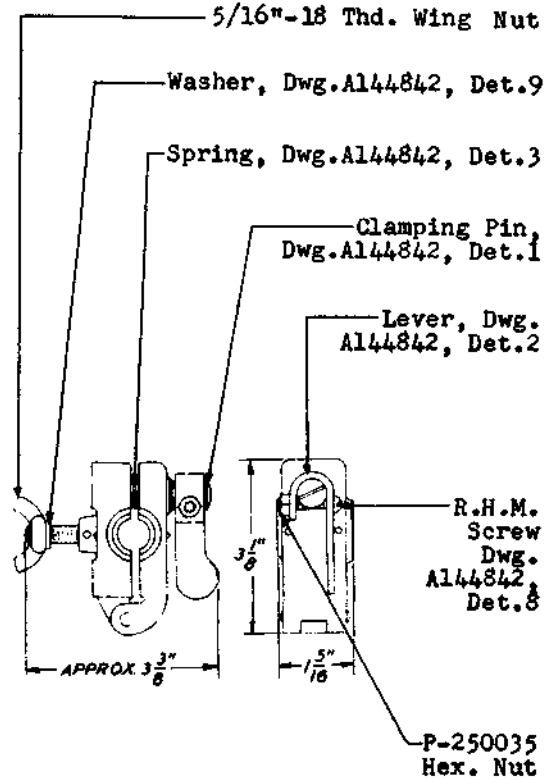


Portable plug cleaner.

Consists of a bracket with an insulated tapered pin for holding a cleaning cord and centering the plugs; a P-243641 hank (48 feet) of 4 solid braid white cotton cord and two wood cord adjusting balls.

For use in conjunction with the 385A, 385B and 385C tools, in cleaning plugs.

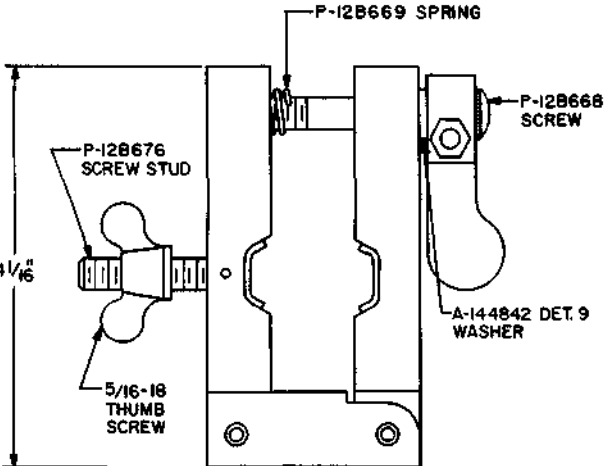
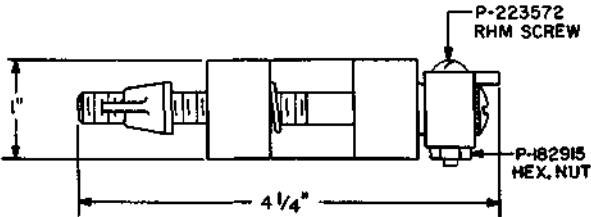
→ TOOL, 385A
TOOL, 385B
TOOL, 385C



Plug chucks.

These tools are for use in conjunction with the 384A tool for holding plugs while cleaning. The 385A tool is for holding 47-type plugs, the 385B tool is for holding 137-, 152- and 289-type plugs and the 385C tool is for holding 309- and 310-type plugs.

TOOL, 385D



Plug chucks.

Consists of two jaws hinged at one end and fastened by means of a screw with a handle at the other end.

For use in conjunction with the 384A tool for holding 396A plugs while cleaning.

TOOL, 386A Manufacture discontinued.

TOOL, 386B Manufacture discontinued.