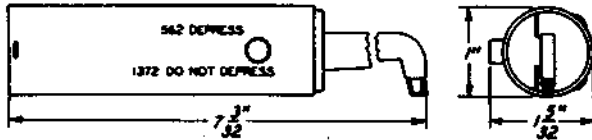


CODED TOOLS  
NO. 369 TO 377A  
DESCRIPTION

TOOL, 369 Manufacture Discontinued.  
Replaced by the No. 369B tool.

TOOL, 369B

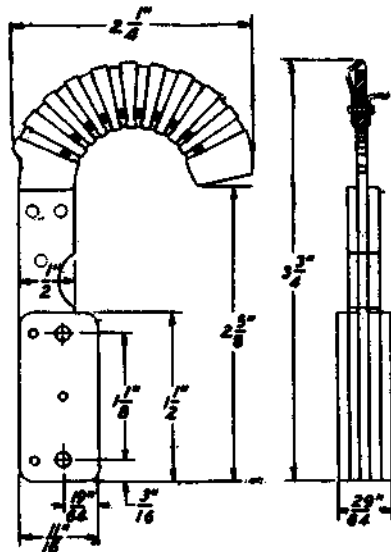


Test tool. 562 ohms and 1372 ohms.

Replaces the Nos. 343 and 369 tools.

For use on plunger-type primary line switches.

TOOL, 370A  
TOOL, 370B



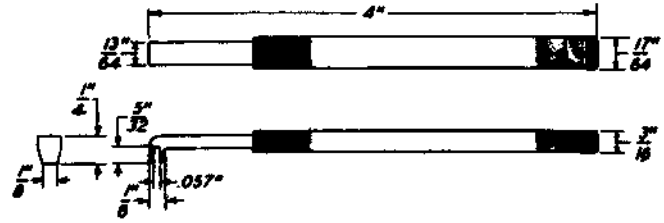
Bank busyng tools.

Replaces the AECO No. H-23366 busyng tool.

The No. 370A tool is for use with a W10A cord and a No. 240D plug for test purposes on 100-point step-by-step banks.

The No. 370B tool is for use with a W10A cord and a No. 240D plug for test purposes on 200-point step-by-step banks.

TOOL, 371

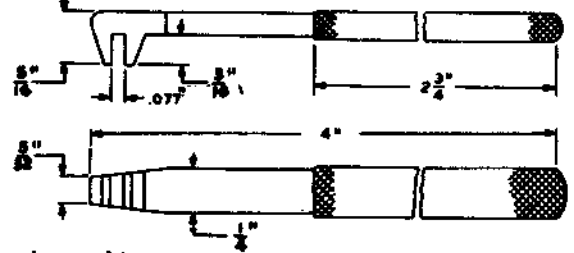


Spring adjuster.

Replaces the No. 98 tool and the R-69710 spring adjuster.

For general use.

TOOL, 371B

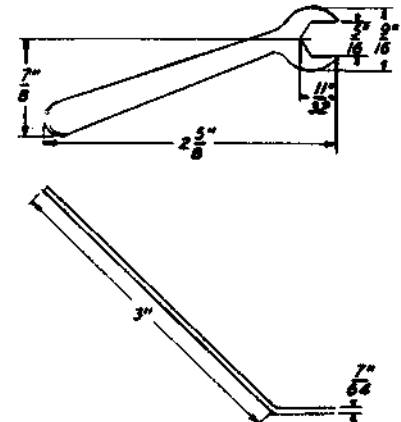


Spring adjuster.

Replaces the D-178349 tool.

For use in adjusting the retractile springs of KS-13835 readers.

TOOL, 372



5/16" Hex. open, single-end, offset wrench.

For use on panel elevator apparatus and 177- and 203-type relays.

SECTION 074-113-101

TOOL, 373      Manufacture Discontinued.  
Replaced by the No. 373B tool.

TOOL, 373B      Manufacture Discontinued.  
Replaced by the No. 373C tool.

TOOL, 373C      Manufacture Discontinued.  
Replaced by the No. 373D tool.

TOOL, 373D

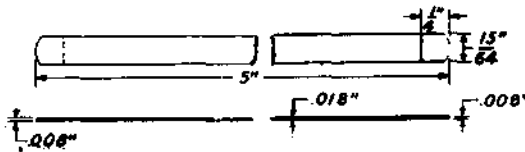


Contact burnisher holder. Consists of a tube made of insulating material having a chuck on one end and equipped with a cap at the other end. The tube provides space for storing 374-type tools, a wire-core bristle brush for cleaning sequence switches and crossbar select fingers used for replacement purposes. These articles are not furnished with this tool.

Replaces the Nos. 373, 373B and 373C tools.

For general use in burnishing contacts, cleaning sequence switch cams, and replacing selecting fingers on 300- and similar type switches.

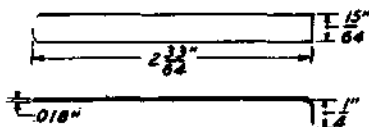
TOOL, 374A



Contact burnisher blade.

For use with the No. 373D tool when burnishing contacts.

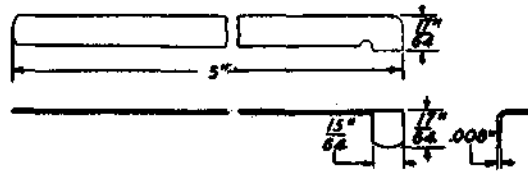
TOOL, 374B



Contact burnisher blade.

For use with the No. 373D tool when burnishing contacts.

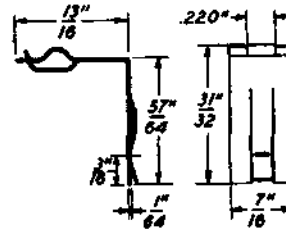
TOOL, 374C



Contact burnisher blade.

For use with the No. 373D tool when burnishing contacts.

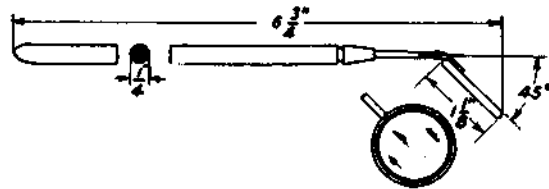
TOOL, 375A



Make busy plug and trouble ticket holder.

For use on 197- and 198-type switches.

TOOL, 376A

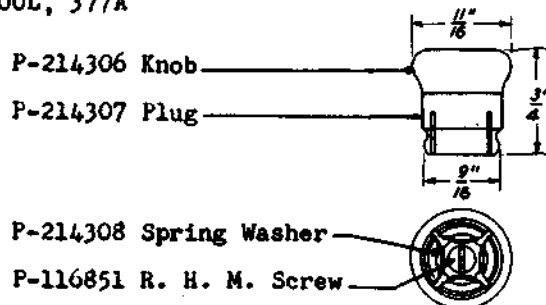


A magnifying dental mirror with the metal surfaces insulated.

Replaces dental mirror, R-1623.

For use on elevator apparatus, relays, 200- and 206-type selectors and 197- and 198-type switches.

TOOL, 377A



P-214306 Knob

P-214307 Plug

P-214308 Spring Washer

P-116851 R. H. M. Screw

Dialing knob

For use on 2-, 4- and 5-type dials for test purposes.