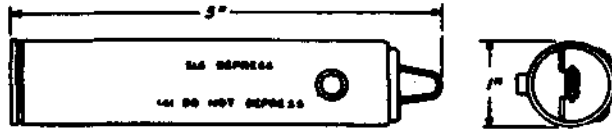


**CODED TOOLS**  
**NO. 341 TO 353C**  
**DESCRIPTION**

**TOOL, 341**      **Manufacture Discontinued**  
**Replaced by the No.341B tool**

**TOOL, 341B**

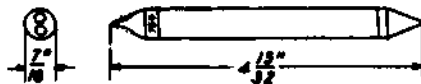


Line switch test tool. 51.6 ohms and 141 ohms.

Replaces the No. 341 tool.

For use on plunger type secondary line switches and out-trunk switches.

**TOOL, 342**

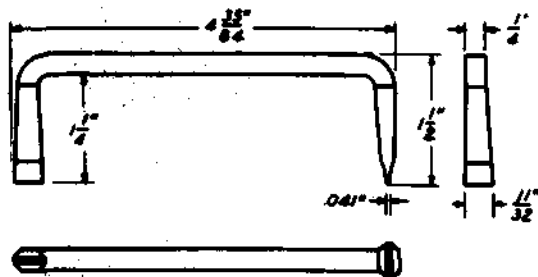


Line switch test tool. 0 ohms and 750 ohms.

For use on plunger type primary line switches.

**TOOL, 343**      **Manufacture Discontinued**  
**Replaced by the No. 369 tool**

**TOOL, 344**

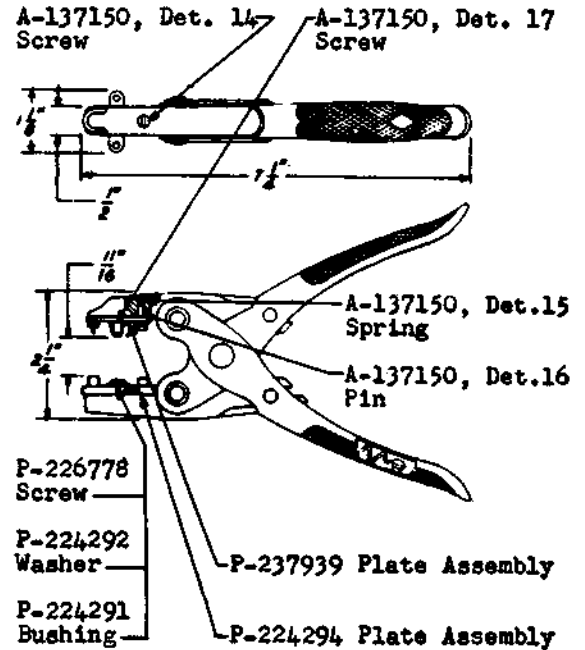


Offset screwdriver.

Replaces the No. 394 tool.

For general use.

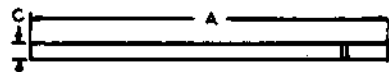
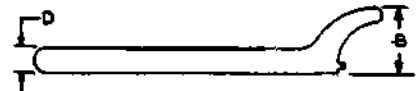
**TOOL, 345**



Jack sleeve remover and replacer

For use on 92- and 292-type jacks

**TOOL, 346**  
**TOOL, 346B**



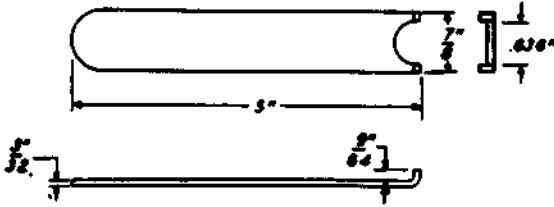
Tool No.	Dimensions			
	"A"	"B"	"C"	"D"
346	5"	1"	1/4"	3/8"
346B	5-5/8"	1-1/8"	1/8"	5/8"

Spanner wrenches

No. 346 tool is for use with the No. 347 tool on earlier 10-type bearings and 16-type drives on vertical drive shafts.

No. 346B tool is for use in adjusting input and output motor drives of the AMA system.

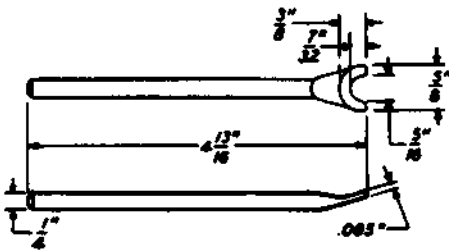
TOOL, 347



Spanner wrench.

For use in conjunction with the No. 346 tool on earlier 10-type bearings and 16-type drives on vertical drive shafts.

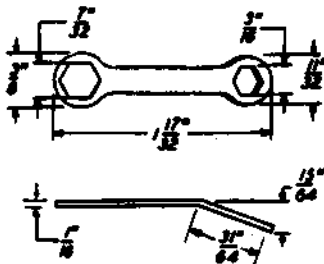
TOOL, 348



Bearing remover.

For use on A- and B-type sequence switches and power driven rotary selectors.

TOOL, 349

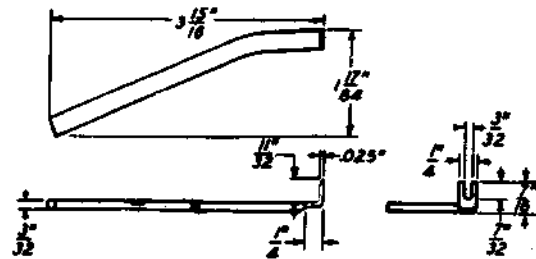


3/16" and 7/32" Hex. closed, double-end offset wrench.

Replaces the Nos. 208 and 231 tools.

For use on 50-type dial testers, 22-type drops and relays.

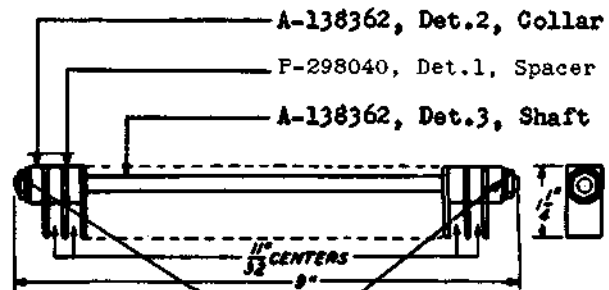
TOOL 350



Spring adjuster.

For use on gravity type relays.

TOOL, 352



A-138362, Det.2, Collar

F-298040, Det.1, Spacer

A-138362, Det.3, Shaft

P-125061 Hex.Nut

P-284157 Washer

Spring separator.

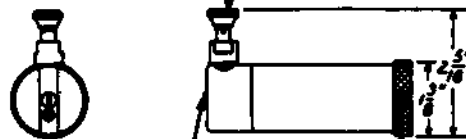
For use on A- and B-type sequence switches.

TOOL, 353 Manufacture Discontinued  
Replaced by the No. 353B tool

TOOL, 353B Manufacture Discontinued  
Replaced by the No. 1003A tool kit

TOOL, 353C

A-146018, Det.6, Nut



A-146018, Det.10,  
F.Fil.H.M. Screw

A-146018,  
Det.5, Cap

Grease gun designed to discharge grease in definite limited quantities.

The No. 570A straight nozzle or the No. 571A curved nozzle is required for this tool.

This tool makes up part of the No. 1003A tool kit.

For general use.