

43 TELEPRINTER 5-LEVEL PAPER TAPE READER ASSEMBLY

PARTS

1. GENERAL

1.01 Information on maintenance spare parts is provided in this section for the 43 Teleprinter 5-Level Paper Tape Reader Assembly.

1.02 Whenever this section is reissued the reason for reissue will be listed in this paragraph.

1.03 Part numbers are listed in the index in numerical order and indicate the page on which the parts appear. Asterisked numbers, stocked as "List 1", indicate a maintenance spare stocking ratio of one spare for the first 20 stations

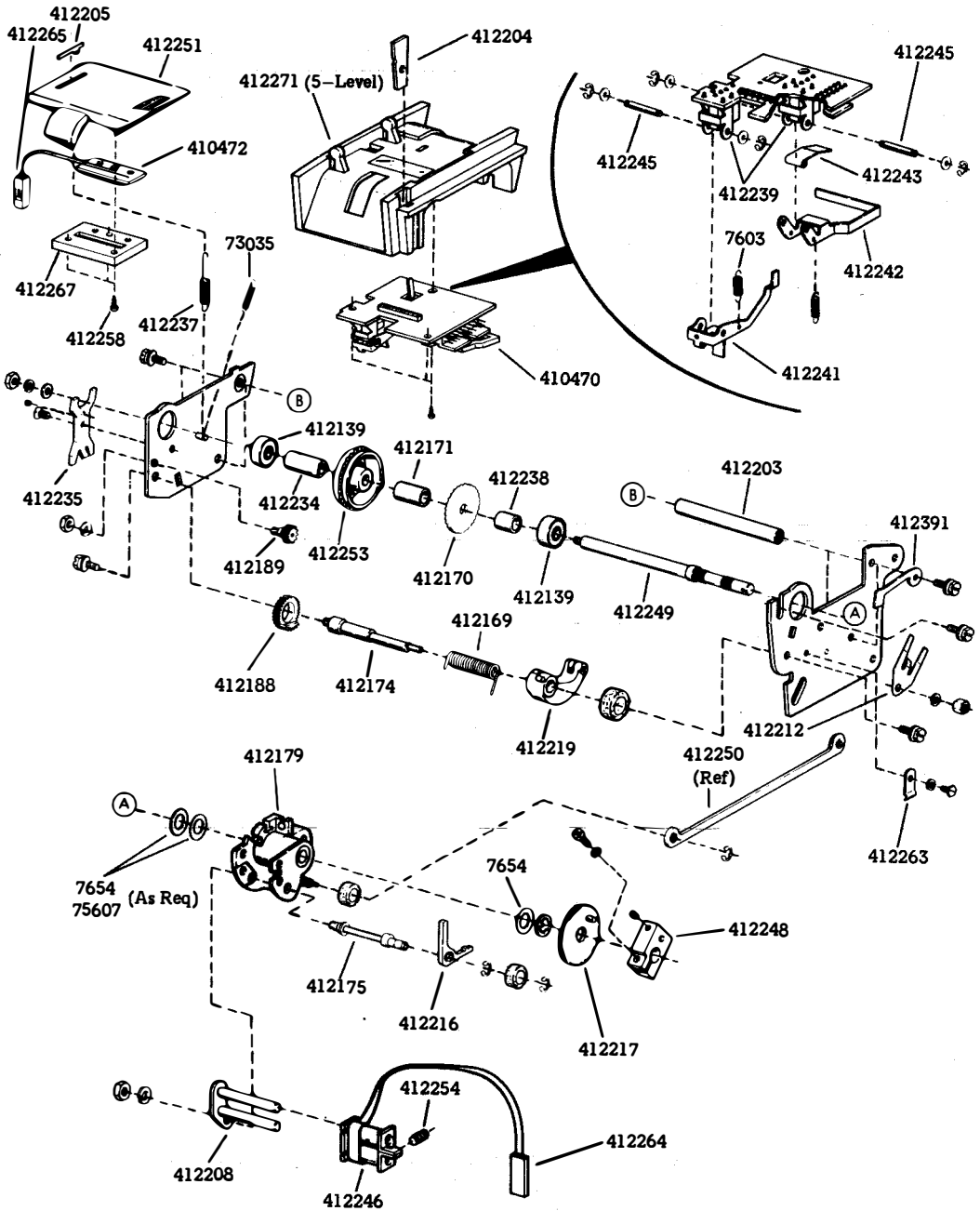
and an additional spare for each additional 30 stations in a maintenance area. Part numbers without asterisks are not maintenance spares but may be ordered separately for local repair of the PTU.

1.04 When ordering replaceable parts, unless otherwise specified prefix each part number with the letters "TP" (ie, TP430047).

1.05 The troubleshooting and disassembly/reassembly information for these parts is provided in Sections 574-506-300 and 574-506-720 respectively.

2. PARTS

READER ASSEMBLY — 412280 5-level



3. NUMERICAL INDEX

3.01 Parts listed without asterisks are not maintenance spares but may be ordered as needed for local repair of major components or terminals.

Part Number	Description and Page Number	Part Number	Description and Page Number	Part Number	Description and Page Number
7603	Spring 2	412204	Plate, Nut 2	412245	Shaft 2
7654	Shim, .004 In Thk 2	412205	Plate, Spring 2	412246	Coil, Transport 2
73035	Spring, 2	412208	Core Assembly, Magnet 2	412248	Clamp 2
75607	Washer, Flat 2			412249	Shaft, Transport 2
410470	Card, Circuit 2	412212	Clamp, Bearing 2	412250	Link 2
410472	Card, Circuit 2	412216	Pawl 2	412251	Lid, Reader 2
412139	Bearing 2	412217	Wheel, Ratchet 2	412253	Wheel, Feed 2
412169	Spring 2	412219	Detent Assembly 2	412254	Spring, Pawl 2
412170	Starwheel 2	412234	Spacer 2	412258	Screw, 2-32 Spl 2
412171	Spacer 2	412235	Plate, Adjustment 2	412263	Clamp, Cable 2
412174	Shaft, Eccentric	412237	Spring, Tape Lid 2	412264	Cable 2
	Detent 2	412238	Spacer 2	412265	Cable 2
412175	Shaft, Pawl 2	412239	Switch 2	412267	Insert w/Cover 2
412179	Housing 2	412241	Bail, Tape-Out 2	412271	Housing (5-level) 2
412188	Pinion 2	412242	Bail, Tight-Tape 2	* 412280	Reader Assembly 2
412189	Pinion 2	412243	Spring, Yield 2	412391	Clamp 2
412203	Post 2				

*A maintenance spare stocking ratio of one spare for the first 20 stations and one additional spare for each additional 30 stations in a maintenance area.