

35 MULTIPLE WIRE DISTRIBUTOR (LD)
PARTS

FIGURE	CONTENTS	PAGE
1	Frame Mechanism (For RO & KSR Sets)	2
2	Frame Mechanism (For ASR Set)	3
3	Frame Mechanism (Self-Contained & ASR)	4
4	Frame Mechanism (Rack Mounted)	5
5	Function Clutch Mechanism	6
6	Clutch Trip Mechanism	7
7	Distributor Block	8
8	159394 and 173358 Modification Kits to Add Terminal Board Assembly to Apparatus Cabinet	9
	Numerical Index	10

Application	Teletype Code	Bell System Code
ASR	LD8	28J-1
KSR & RO	LD9	28J
Self-Contained	LD10	28J-2
Self-Contained	LD15	28K
KSR & RO	LD16	28L
Self-Contained	LD19	28L-1
Self-Contained	LD802	35A

NOTE:

When ordering parts from this section,
prefix each number with the letters TP.

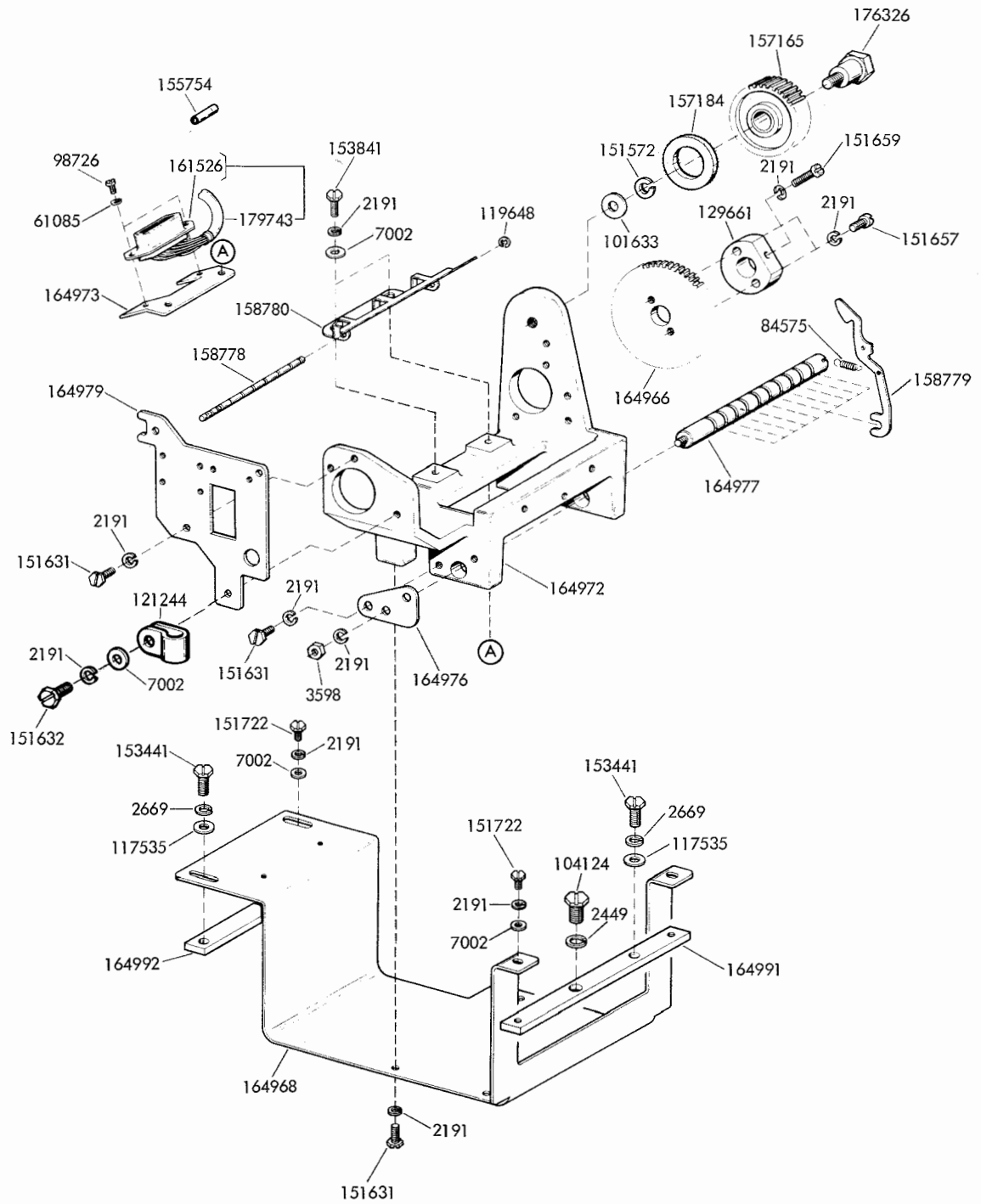


FIGURE 2. FRAME MECHANISM (FOR ASR SET)

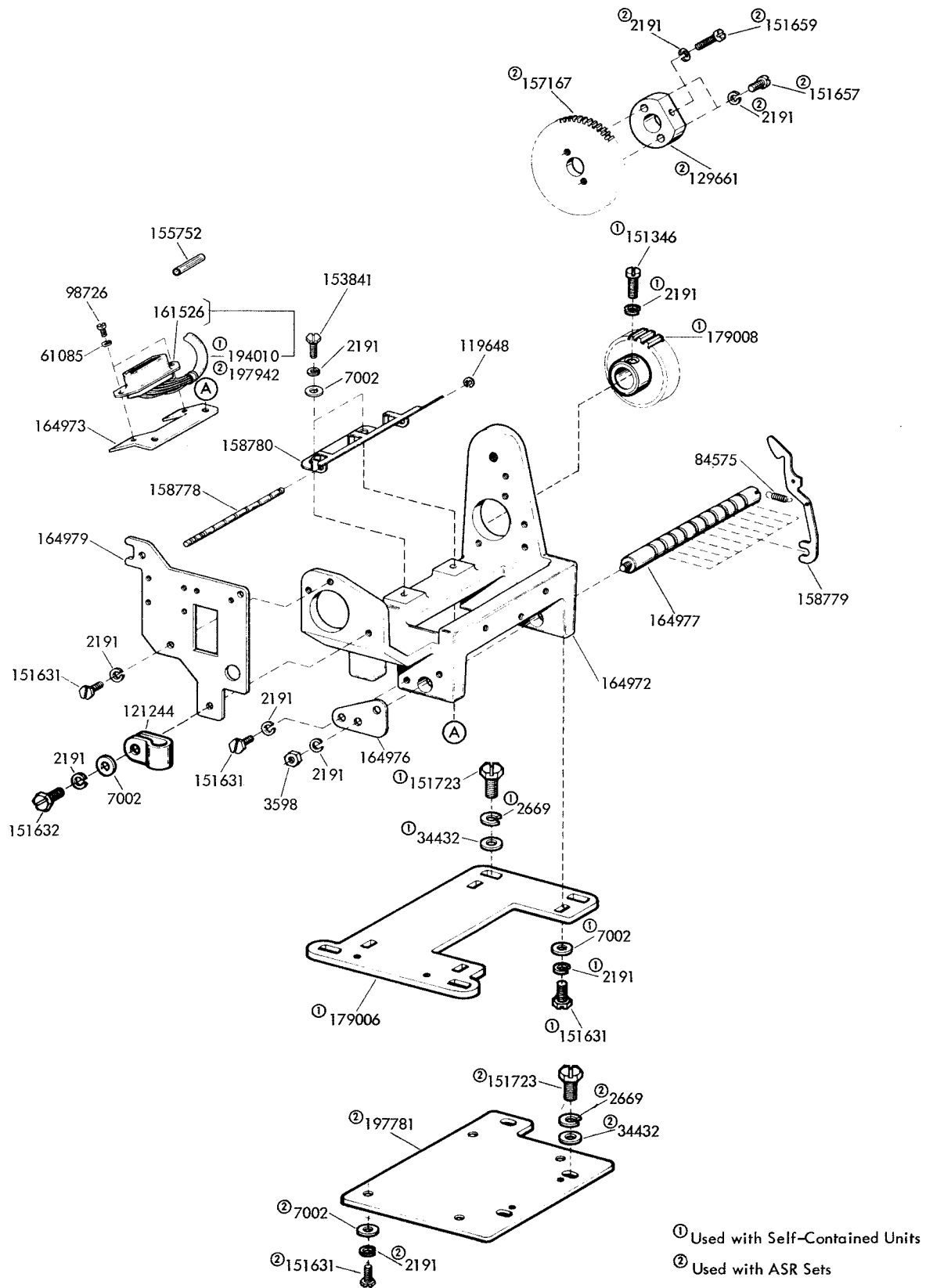


FIGURE 3. FRAME MECHANISM (SELF-CONTAINED & ASR)

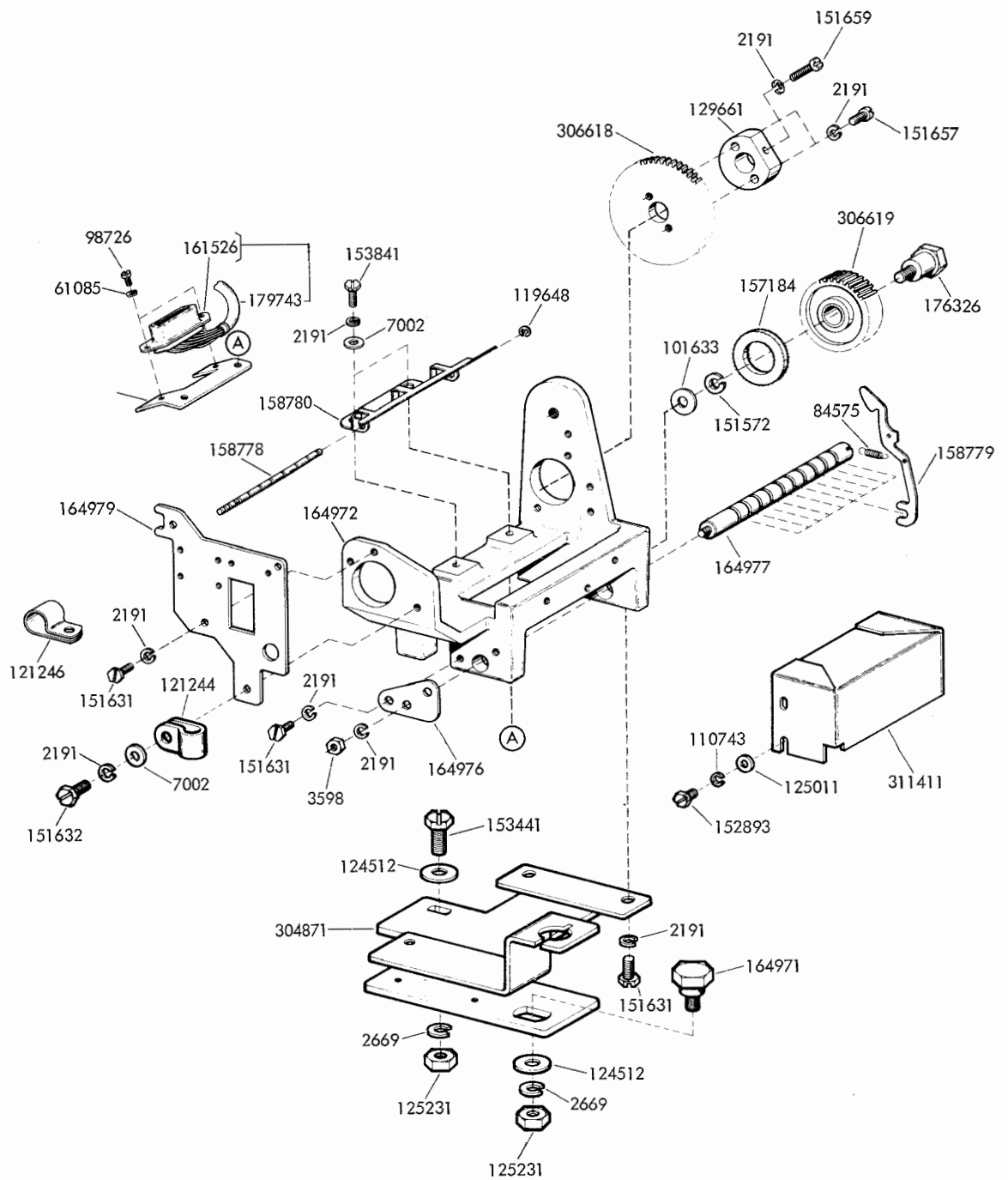


FIGURE 4. FRAME MECHANISM (RACK MOUNTED)

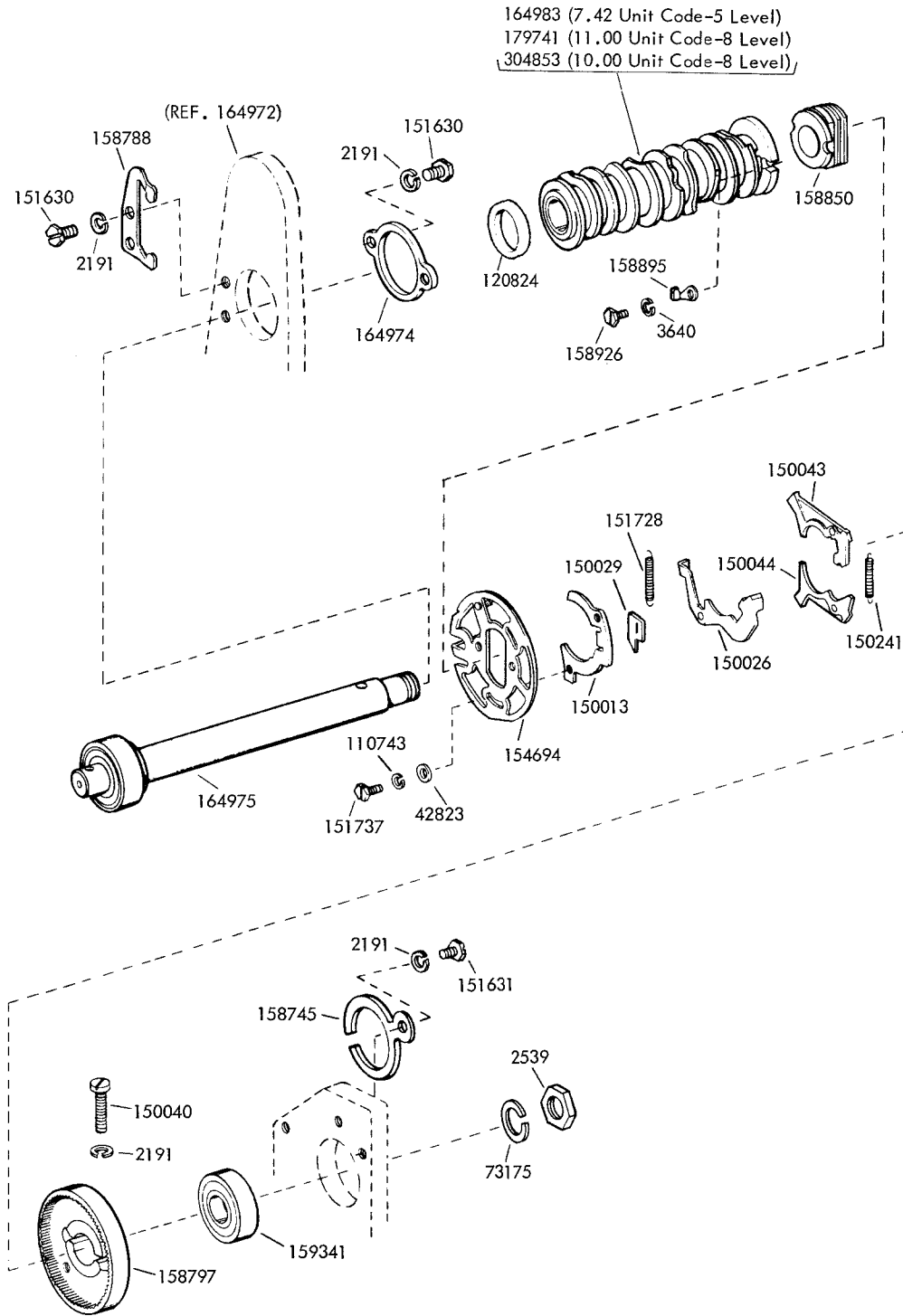


FIGURE 5. FUNCTION CLUTCH MECHANISM

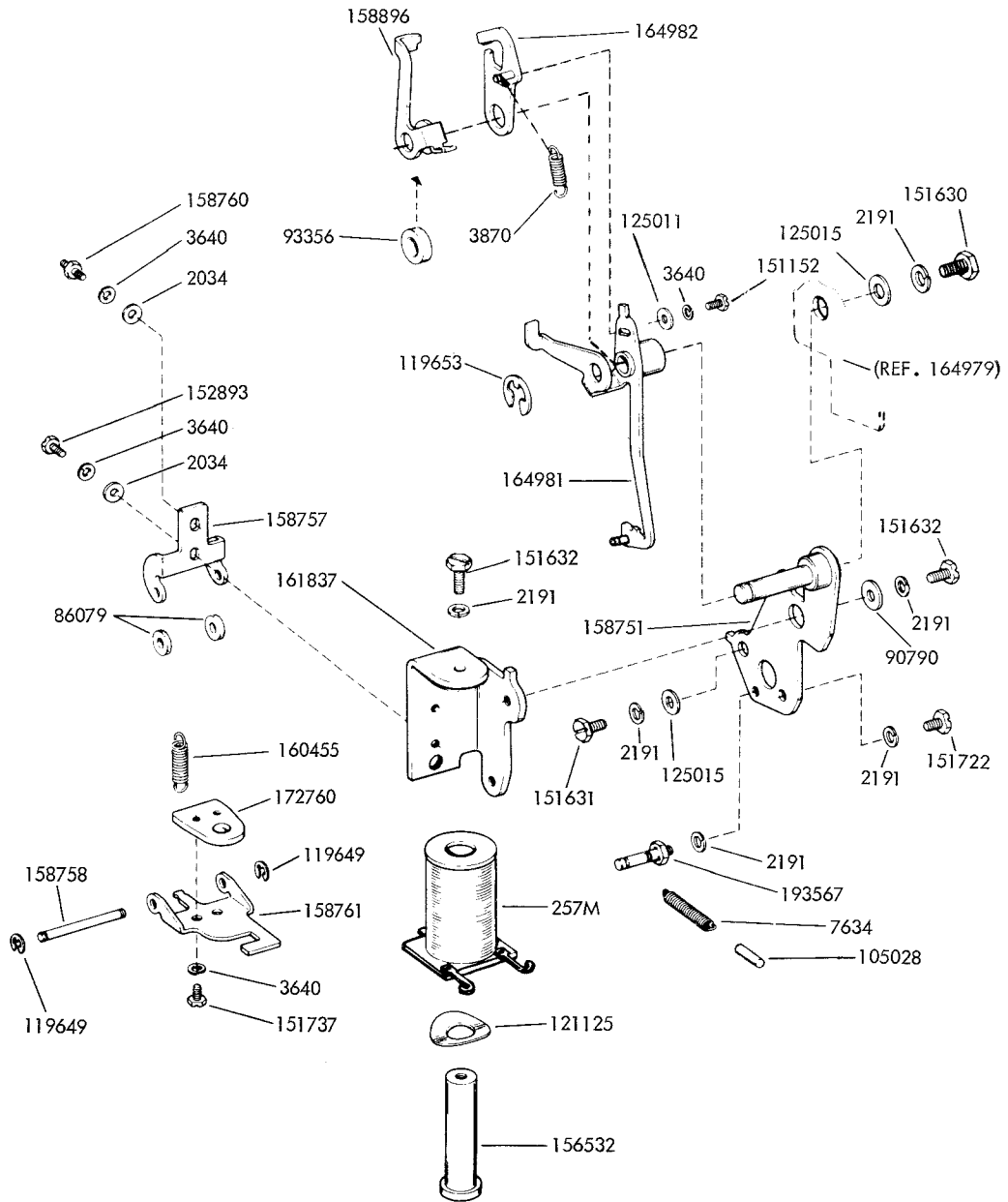


FIGURE 6. CLUTCH TRIP MECHANISM

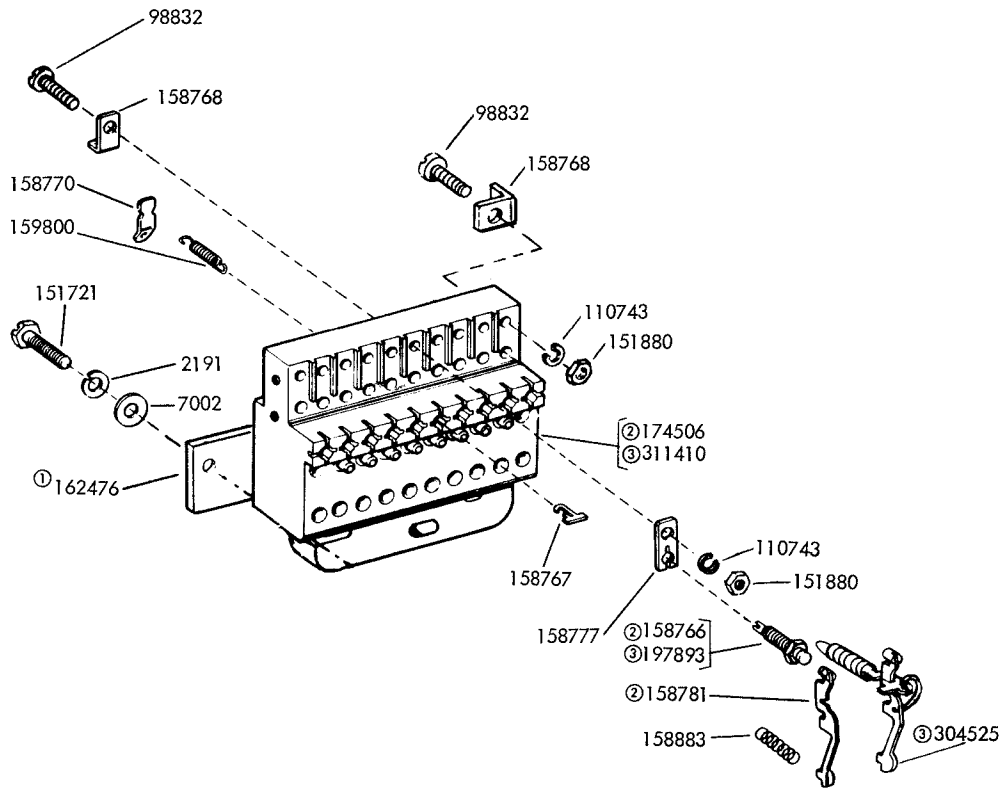


FIGURE 7. DISTRIBUTOR BLOCK

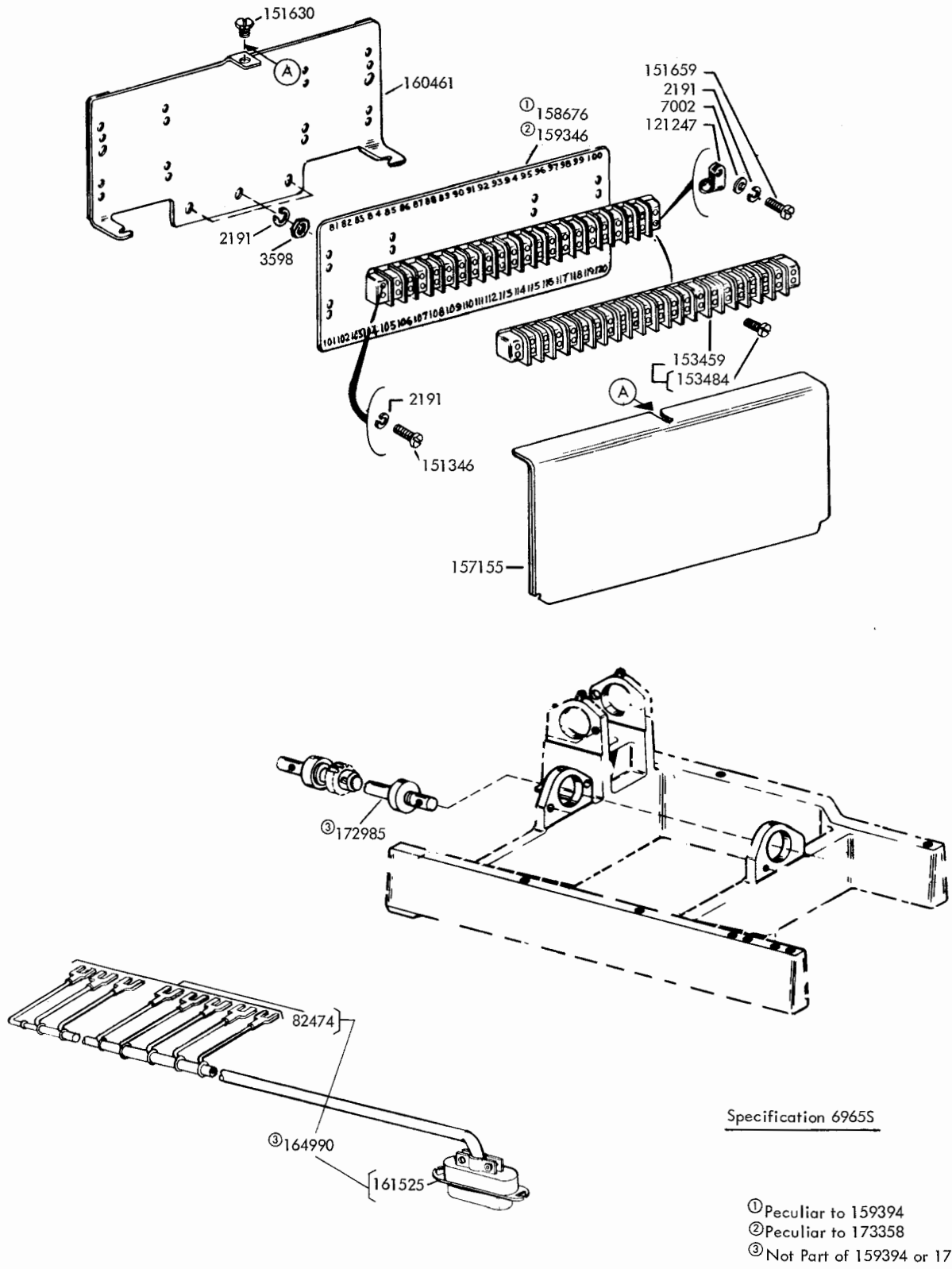


FIGURE 8. 159394 AND 173358 MODIFICATION KITS TO ADD TERMINAL BOARD ASSEMBLY TO APPARATUS CABINET

NUMERICAL INDEX

Part Number	Description and Page Number	Part Number	Description and Page Number	Part Number	Description and Page Number
257M	Coil, Magnet 7	151630	Screw (6-40 x 1/4 Hex) 6, 7, 9	158896	Lever, Latch 7
2034	Washer, Flat 7	151631	Screw (6-40 x 5/16 Hex) 2, 3, 4, 5, 6, 7	158926	Screw (4-40 x 7/32 Hex) 6
2191	Washer, Lock 2, 3, 4, 5, 6, 7, 8, 9	151632	Screw (6-40 x 3/8 Hex) 2, 3, 4, 5, 7	159341	Bearing, Ball 6
2449	Washer, Lock 3	151657	Screw (6-40 x 1/4 Fil) 2, 3, 5	159346	Insulator (81-120) 9
2539	Nut (3/8-32 Hex) 6	151659	Screw (6-40 x 1/2 Fil) 2, 3, 4, 5, 9	159394	Modification Kit 9
2669	Washer, Lock 2, 3, 4, 5	151693	Screw (6-40 x 9/16 Fil) 2	159800	Spring 8
3598	Nut (6-40 Hex) 2, 3, 4, 5, 9	151722	Screw (6-40 x 3/16 Hex) 3, 4, 6, 7, 8	160455	Spring 7
3640	Washer, Lock 6, 7	151737	Screw (4-40 x 11/64 Hex) 6, 7	160461	Bracket 9
3870	Spring 7	151880	Nut (4-40 Hex) 8	161525	Connector, Plug (14 Pt) 9
7002	Washer, Flat 2, 3, 4, 5, 8, 9	152893	Screw (4-40 x 1/4 Hex) 5, 7	161526	Connector, Receptacle (14 Pt) 2, 3, 4, 5
34432	Washer, Flat 4	153441	Screw (10-32 x 7/16 Hex) 2, 3, 5	161837	Bracket 7
42823	Washer, Flat 6	153459	Block, Terminal 9	162476	Plate 8
61085	Washer, Lock 2, 3, 4, 5	153484	Screw (6-32 Spl) 9	164966	Gear (42T) 3
73175	Washer, Lock 6	153841	Screw (6-40 x 9/16 Hex) 2, 4, 5	164968	Bracket, Mounting 3
82474	Terminal 9	154694	Disk, Clutch Cam 6	164971	Screw, Shoulder (10-32) 2, 5
84575	Spring 2, 3, 4, 5	155752	Sleeve, Insulating (5/64 ID x 1/2" Lg) 4	164972	Casting 2, 3, 4, 5
86079	Washer, Felt 7	155754	Sleeve, Insulating (1/16 ID x 1/2" Lg) 2, 3	164973	Bracket, Connector 2, 3, 4
90790	Washer, Flat 7	156532	Core 7	164974	Plate 6
92265	Screw (2-56 x 1/8 Rd) 2	157155	Cover 9	164975	Shaft W/Bearing 6
93356	Washer, Felt 7	157165	Gear (35T) 2, 3	164976	Plate 2, 3, 4, 5
98726	Screw (3-48 x 1/4 Fil) 2, 3, 4, 5	157166	Gear (42T) 2	164977	Shaft, Lever 2, 3, 4, 5
98832	Screw (4-40 x 11/16 Fil) 8	157167	Gear (60T) 2, 4	164979	Plate, Mounting 2, 3, 4, 5, 7
101633	Washer, Flat 2, 3, 5	157171	Shaft, Intermediate 2	164981	Lever, Trip 7
104124	Screw (1/4-32 x 11/32 Hex) 3	157184	Washer, Felt 2, 3, 5	164982	Lever, Trip 7
110743	Washer, Lock 5, 6, 8	157288	Plate, Adapter 2	164985	Plate, Mounting 2
117535	Washer, Flat 3	158745	Clamp, Bearing 6	164990	Cable Assembly 9
119648	Ring, Retaining 2, 3, 4, 5	158751	Plate, Clutch Trip 7	164991	Plate, Right Adapter 3
119649	Ring, Retaining 7	158757	Hinge, Mounting 7	164992	Plate, Left Adapter 3
119653	Ring, Retaining 7	158758	Shaft 7	172760	Armature 7
120824	Washer, Felt 6	158760	Post, Spring 7	172985	Shaft w/Bearings & Gear 9
121125	Washer, Spring 7	158761	Bail, Armature 7	173358	Modification Kit 9
121244	Clamp, Cable (1/4" ID) 2, 3, 4, 5	158766	Screw, Contact (6-40) 8	174057	Insulator, Contact 2
121246	Clamp, Cable (3/8" ID) 2, 5	158767	Guide, Lever 8, 9	174506	Block, Distributor 8
121247	Clamp, Cable (7/16" ID) 9	158768	Terminal 8	174506	Screw, Shoulder (10-32) 2, 3, 5
124512	Washer, Flat 2, 5	158770	Terminal, Spring Holder 8	176326	Screw, Shoulder (10-32) 2, 3, 5
125011	Washer, Flat 5, 7	158777	Holder, Screw 8	179006	Plate, Mounting 4
125015	Washer, Flat 7	158778	Post, Spring 2, 3, 5	179008	Gear (40T) 4
125231	Nut (10-32 Hex) 2, 5	158779	Lever, Cam Follower 2, 3, 4, 5	179743	Cable Assembly 2, 3, 5
129661	Hub 2, 3, 4, 5	158780	Guide 2, 3, 4, 5	179745	Bracket, Terminal Block 2
150013	Disk, Adjusting 6	158781	Rocker, Contact 8	193567	Post, Spring 7
150026	Lever, Shoe Release 6	158788	Clamp, Bearing 6	194010	Cable Assembly 4
150029	Wick, Felt 6	158797	Drum, Clutch 6	197781	Plate, Mounting 4
150040	Screw (6-40 x 5/8 Fil) 6	158850	Bearing, Sleeve 6	197893	Screw, Contact (6-40) 8
150043	Shoe, Secondary Clutch 6	158883	Spring, Compression 8	197942	Cable Assembly 4
150044	Shoe, Primary Clutch 6	158895	Clip 6	304525	Rocker 8
150241	Spring 6			304871	Plate, Mounting 5
151126	Spacer (.250") 2			305136	Block, Distributor 8
151152	Screw (4-40 x 3/16 Hex) 7			306618	Gear (60T) 5
151346	Screw (6-40 x 3/8 Fil) 2, 4, 9			306619	Gear (32T) 5
151442	Screw (6-40 x 1/2 Hex) 2			311410	Block, Distributor 8
151572	Washer, Lock 2, 3, 5			311411	Cover 5